



# drafts and designs

*a guide for 5 to 12 harness weaves*

Volume 11, Number 1, September, 1968

## RIBS AND SHADOWS

This is an interesting 8 harness shadow weave, that makes an excellent material for women's coats, etc.

## WARP

Two wool tweeds, made of New Zealand wool in a 1-1/4 run size, with 2,000 yards per lb. were used in the warp.

- X -- light grey blue wool tweed
- O -- medium blue wool tweed

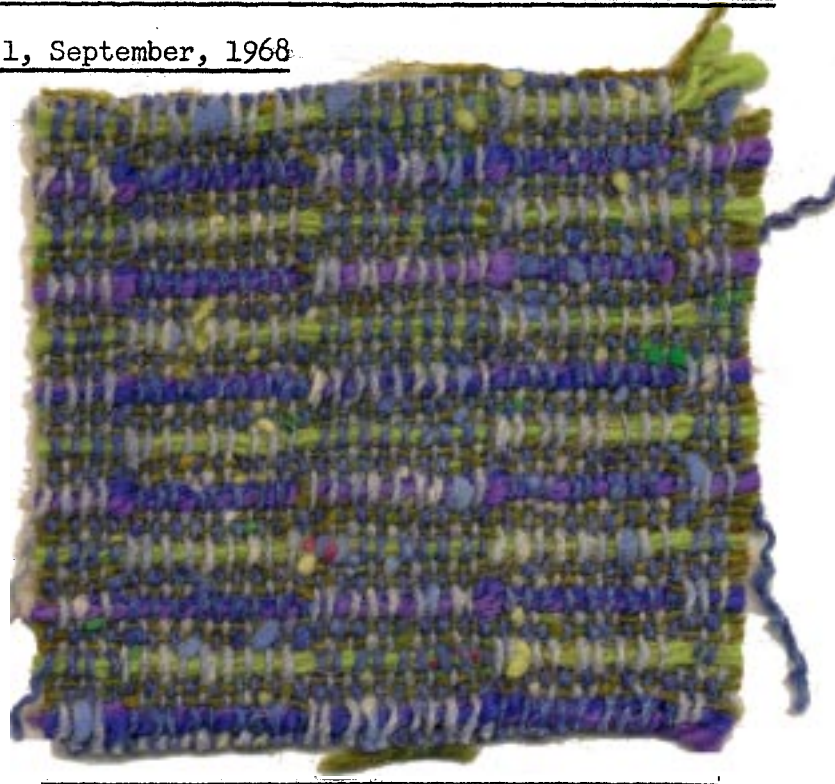
## WEFT

There are four different threads used in the weft. For one of the ribs in this weave, we used a bright kelly green wool tweed with flecks of passionate pink and fushia. For the 2nd rib, we used two colors of the beautiful English rug wool, wound together on one bobbin to make the 2nd rib. The colors are #F 131, bright royal blue, and F126 lilac lavender.

The last thread used in the weft is an Irish Wool Tweed that we are importing from Ireland. It is a sort of Olive wool tweed with flecks of kelly light olive and a yellow green. This is the equivalent of a 1-1/8 run wool tweed as measured here in this country, although it is measured differently in Ireland.

## REED USED:

A 9 dent reed was used, and it was double sleyed, 2 ends per dent, or 18 threads per inch.



## TIE-UP DRAFT

8	0	0			0	
7			0	0		0
6		0	0		0	
5	0			0		0
4			0	0	0	
3	0	0				0
2	0			0	0	
1		0	0			0
	1	2	3	4	5	6
					A	B

NOTE: A & B or 5 & 6 are Tabby Treadles  
1,2,3,4 are pattern treadles

### DRAFTS AND DESIGNS

Published monthly (except July and August) by Robin & Russ Handweavers, 533 N. Adams St., McMinnville, Oregon.

SUBSCRIPTIONS: \$5.00 per year. Back issues or single copies, 50¢ each. Yearly subscriptions start with the September issue. If you subscribe after September, back issues from then on will be mailed to you, unless you specify that you want your subscription to start with the next September issue.

VOLUME 11, Number 1 - September, 1968

### THREADING DRAFT:

8											X	X	X
7											0	0	0
6	X	X	X								X	X	X
5	0	0	0								0	0	0
4				X	X	X					X	X	X
3				0	0	0					0	0	0
2											X	X	X
1											0	0	0

### KEY TO THREADS IN THE WARP:

- X - 1½ run wool tweed from New Zealand in light grey with flecks of blue and green wool.
- 0 - 1½ run wool tweed in medium blue with flecks of light blue and royal blue wool. This is also made of wool from New Zealand.

### TREADLING SEQUENCE:

Treadle #6 - Olive Irish Tweed  
 Treadle #5 - Olive Irish Tweed  
 Treadle #6 - Olive Irish Tweed  
 Treadle #4 - Kelly Green Tweed, 3 ends wound together on one bobbin  
 Treadle #6 - Olive Irish Tweed  
 Treadle #5 - Olive Irish Tweed  
 Treadle #6 - Olive Irish Tweed  
 Treadle #2 - 2 colors of English Rug wool, #131 and 126 wound together on one bobbin to act as one thread.

END OF ONE COMPLETE PATTERN REPEAT.

Repeat over and over as desired.

### MORE ABOUT THIS FABRIC:

This fabric was quite a challenge and the rewards were very pleasing when it was finished. First of all, we have about 100 lbs. of the medium blue tweed, and it had not sold well for about a year. As a result, I was determined to weave a fabric using this medium blue wool tweed, to show what could be done with it, and here are the results in this sample. So, I mixed it

with the light grey-blue wool tweed, as alternate threads in the warp, decided to try a shadow weave, and then began experimenting after we had the loom set up a full 42" wide. We had a 9 yard warp on the loom, and I must admit that we used about a yard of it just making samples before we finally found a treadling sequence that we liked and a combination of colors that we liked. My first thought was to try and make a diamond in the shadow weave, but it turned out to be so indistinct, that I finally settled on the rib weave, we have here. We had a

42" wide warp, 9 yards long, and we used one yard for experimenting. This left 8 yards of warp, and from this we were able to weave 6-2/3 yards of fabric as per our sample. Then we washed it in luke-warm water, extracted the water, and dried it in the automatic drier, and then steam pressed it, and it seems to be a very pleasing fabric.

### COST OF THREADS USED:

- The two tweed threads in the warp and the kelly green in the weft are \$3.20 per lb.
- The beautiful english 2 ply rug yarn is \$4.80 per lb. - comes in 3½ oz. skeins.
- The Irish Olive Green Tweed is \$4.80 per lb. on about 1 lb. cones.

### COST OF THE FABRIC:

In 9 yards of 42" wide warp, it took 1-3/4 lbs. of each of the two warp threads. Thus the total warp cost was \$11.20 or the cost of the warp per yard was \$1.25.

In the weft, we used 12 oz. of the Kelly Green tweed tripled, 1 lb. 5 oz. of the Irish Tweed, and 8 oz. each of the #131 and #126 English Rug yarns. Thus the total weft cost came to \$13.50 for 6-2/3 yards of fabric or \$2.03 per yard of weft.

WARP COST PER YARD.....\$1.25  
 WEFT COST PER YARD..... 2.03  
 TOTAL FABRIC COST PER YARD.....\$3.28



# drafts and designs

*a guide for 5 to 12 harness weaves*

Volume 11, Number 2, October, 1968

LIME-LIGHT:

A beautiful fabric made of fine sewing thread for possible use in our modern mode of dress.

WARP:

The warp is the thread, Fine-Weave, in a size 50/3 cotton in two different colors.

- X - Temple Gold, 50/3 Cotton
- O - Chartreuse, 50/3 Cotton

WEFT:

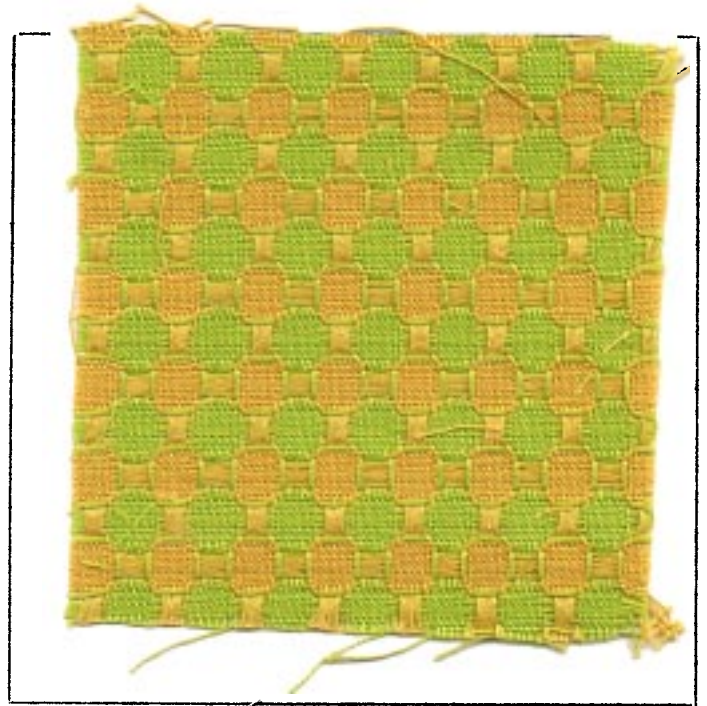
The weft threads are the same two colors Chartreuse and Temple Gold in the 50/3 sewing thread, as are used in the Warp.

REED USED:

A 12 dent reed was used, and it was sleyed 4 ends per dent, or 48 threads per inch.

THREADING DRAFT:

8		O		O		O		O												
7			O		O		O		O											
6	O									O										
5		O									O									
4								X		X		X		X						
3									X		X		X		X					
2							X									X				
1								X									X			



DRAFTS AND DESIGNS

Published monthly (except July and August) by Robin & Russ Handweavers, 533 N. Adams St., McMinnville, Oregon.

SUBSCRIPTIONS: \$5.00 per year. Back issues or single copies, 50¢ each. Yearly subscriptions start with the September issue. If you subscribe after September, back issues from then on will be mailed to you, unless you specify that you want your subscription to start with the next September issue.

VOLUME 11, Number 2, October, 1968

TIE-UP DRAFT:

8		0		0			0	0
7	0		0				0	0
6		0		0	0	0		
5	0		0		0	0		
4	0	0				0		0
3	0	0			0		0	
2			0	0		0		0
1			0	0	0		0	
	1	2	3	4	5	6	7	8

TREADLING SEQUENCE:

- # 1. Treadle #8 - Temple Gold
- # 2. Treadle #7 - Temple Gold
- # 3. Treadle #6 - Temple Gold
- # 4. Treadle #5 - Temple Gold
- # 5. Treadle #6 - Temple Gold
- # 6. Treadle #5 - Temple Gold
- # 7. Treadle #6 - Temple Gold
- # 8. Treadle #5 - Temple Gold
- # 9. Treadle #6 - Temple Gold
- #10. Treadle #5 - Temple Gold
- #11. Treadle #8 - Temple Gold
- #12. Treadle #7 - Temple Gold
- #13. Treadle #4 - Chartreuse
- #14. Treadle #3 - Chartreuse
- #15. Treadle #2 - Chartreuse
- #16. Treadle #1 - Chartreuse
- #17. Treadle #2 - Chartreuse
- #18. Treadle #1 - Chartreuse
- #19. Treadle #2 - Chartreuse
- #20. Treadle #1 - Chartreuse
- #21. Treadle #2 - Chartreuse
- #22. Treadle #1 - Chartreuse
- #23. Treadle #4 - Chartreuse
- #24. Treadle #3 - Chartreuse

End of one complete pattern repeat. There are 24 threads in one repeat. Repeat over and over as desired.

COST OF THE THREADS USED, AND MORE:

This fine-weave, 50/3 cotton sewing thread comes in 6,000 yard tubes, and it is \$2.30 per 6,000 yard tube in the colors and \$1.95 in the white. There are 35 colors available plus white.

COST OF THE FABRIC:

In a 9 yard warp, 40" wide, it took just a little less than 3 tubes of the 50/3 cotton for warp. Thus the warp cost we will say is the full cost of the 3 tubes of 50/3 or \$6.90 for 9 yards or 77¢ per yard.

In the weft, there was about 8 yards of the finished fabric, and it seems to figure out to the same amount used in the weft as in the warp, except for the loom waste, so the weft cost was \$6.50 for 8 yards or 81¢ per yard.

WARP COST PER YARD - 40"..... \$ .77  
 WEFT COST PER YARD..... .81  
 FABRIC COST PER YARD..... \$1.58

MORE ABOUT THE FABRIC:

We are indebted to Mrs. Geraldine Wood, of Tulsa, Oklahoma for showing us how beautiful this fine weave thread is when woven into some interesting novelty weaves. At the midwest conference in Tulsa this past summer, she showed all of us (by giving us swatches) how beautiful this fine-weave works up.

I talked to her, and got her to agree to weave one sample for our drafts and designs publication, and this is the one that she so kindly did for us. This is the chance to say a thousand thanks to Mrs. Wood for her idea, help, interest and weaving.

She told us that this pattern is one of the patterns that appeared in a folio from the Shuttle Craft Guild entitled Ten Textiles from far and wide. This one she told us was a weave from India. I think it is scrumptious and hope that you enjoy it also.

The colors in this fine weave thread are both unusual and beautiful, and we must tell you that this is a 50/3 sewing thread that this sample is made of. You should try it some time, and see how nice it does work out. I have an 8 harness bronson flower pattern that would be just beautiful in this fine-weave cotton.

One thing that I must mention is the treadling sequence. I am very much used to reading a threading draft from right to left, but for some reason, I always read the tie-up draft from right to left. If I had reversed the numbering of the treadles and had them 8,7,6,5,4,3,2,1 from left to right, the treadling then would sound much easier to follow. The treadling would then be 1,2,3,4,3,4,3,4,3,4,1,2, and 5,6,7,8,7,8,7,8,7,8,5,6. Also please note that then the treadling would read exactly as the threading draft.





# drafts and designs

*a guide for 5 to 12 harness weaves*

VOLUME 11, NUMBER 3, NOVEMBER, 1968

## CREAMY GOLD

This is a most interesting upholstery fabric which is woven on a straight 8 harness twill.

## THREADING DRAFT

8	X					X			
7		X					X		
6			X					X	
5				X					X
4					X				X
3				X				X	
2					X				X
1						X			X

## WARP:

The warp is a 20/2 mercerized and gassed 20/2 Egyptian cotton in a color called Old Gold.

## WEFT:

In the weft we have 3 colors of the RYAGARN, imported English Rug Wool, and we also used as a tabby thread, a 20/2 Mercerized and Gassed Egyptian cotton in a color called Princeton Orange.

The 3 colors of the rug wool used are as follows:

- A - color #100, Cream
- B - color #108, Corn Yellow
- C - color #102, Film Gray

## REED USED:

A 15 dent reed was used, and it was double sleyed, 2 ends per dent, or 30 threads per inch.



## TIE-UP DRAFT:

8					X			X		X
7				X			X		X	
6			X			X				X
5		X			X				X	
4	X			X						X
3			X					X	X	
2		X					X			X
1	X					X			X	
	1	2	3	4	5	6	7	8	9	10

DRAFTS AND DESIGNS

Published monthly (except July and August) by Robin & Russ Handweavers, 533 N. Adams St., McMinnville, Oregon.

SUBSCRIPTIONS: \$5.00 per year. Back issues or single copies, 50¢ each. Yearly subscriptions start with the September issue. If you subscribe after September, back issues from then on will be mailed to you, unless you specify that you want your subscription to start with the next September issue.

VOLUME 11, Number 3, NOVEMBER, 1968

TREADLING SEQUENCE

I will give the treadling in the easier way of telling it here. There are 24 pattern shots using the Ryagarn for weft, and there are 48 tabby shots in each complete repeat. The treadling sequence is to treadle 1 to 8, three complete times, alternating the Cream, Corn Yellow and Film Grey. Then, in between each row of these 3 colors, you have 2 tabby shots, the A & B tabbies alternately, between each row of wool yarn.

In other words, you treadle 1 in cream wool, two tabby; treadle 2 in Corn Yellow wool, two tabby; treadle 3 in Film Gray wool, two tabby; treadle 4 in Cream wool, 2 tabby; 5 in Corn Yellow wool, 2 tabby, etc., until you have treadled 1 to 8 three times with the wool threads.

MORE ABOUT THE FABRIC

In this fabric, you want to use a firm, even, double beat. Beat, change to the next shed, and beat again before you throw the shuttle. I feel it is important to use this firm, even, double beat.

This fabric was designed as upholstery material, but we were intrigued when one of our customers purchased the same yarns to use in a coat material for herself.

So, while I do think it is primarily an upholstery material, you can see that different individuals look at a fabric and find different uses for it than was anticipated.

This month, we tried to give you a sort of backed material for an upholstery fabric, and so if you will turn this fabric over, you will see that the back has an entirely different appearance than does the front.

This fabric is easy to weave, but you shouldn't talk to anyone when doing it. Because of the fact that there are two tabby shots after each pattern thread, and three different colors in the pattern threads, one complete pattern repeat is fairly long. When you start with all 4 shuttles on the right side, you will find when you have finished one complete pattern repeat, that all 4 shuttles are on the right side again. This is one way to help keep track of where you are. Another is to keep track of each group of 8 pattern threads as you finish them.

COST OF THE THREADS USED:

The warp threads are 20/2 Egyptian cotton, as are the tabby threads. These come on 1/2 lb. tubes, and it is \$5.50 per lb. or \$2.75 per 1/2 lb. tube.

The English rug wool used for the pattern shots is \$4.80 per lb., and comes in skeins of about 3 1/2 oz. each. It has about 550 yards per lb. This, we purchase in Kilogram packages, as it is made for use primarily in Scandinavia. There are supposed to be 2.2 lbs. per kilogram, and we find it comes to about 2 lbs. and 2 oz. per 10 skeins of yarn.

COST OF THE FABRIC:

We had a 9 1/2 yard warp, 42" wide, and set at 30 threads per inch. It took 1 lb. 15 oz. of thread for the warp, or the total warp cost was \$10.65. Thus, the cost per yard was \$1.12 for the 42" wide warp.

In the weft, we used 12 1/2 oz. of the Princeton Orange 20/2 Egyptian Cotton. We also used 1 lb. 8 oz. of each of the 3 colors of the Ryagarn, rug yarn in Cream, Corn Yellow and Film Gray. We had 7-2/3 yards of finished fabric when through from the 9 1/2 yard warp. Thus, the weft cost was \$25.73 or the cost per yard was \$3.36.

WARP COST PER YARD.....	\$ 1.12
WEFT COST PER YARD.....	3.36
FABRIC COST PER YARD.....	\$ 4.48

WEAVING IS FOR ANYONE, by Jean Wilson is back in print again. This outstanding book, with many, many different types of weaving explained is available at the same price of \$8.50 plus 18¢ postage. ROBIN & RUSS, 533 North Adams St., McMinnville, Oregon 97128



# drafts and designs

*a guide for 5 to 12 harness weaves*

---

VOLUME 11, Number 4 - DECEMBER 1968

---

## FALL FOLIAGE COLORS, GREEN & GOLD

While our double weave sample is not shaped like leaves, we have tried to show in this sample, some of the colors of the fall foliage in Oregon this year.

## KEY TO THREADS IN THE WARP

- X - Old Gold, 20/2 Egyptian Cotton
- O - Princeton Orange, 20/2 Egy. Cotton

## WARP

Two colors of Egyptian Cotton, size 20/2 were used in the warp. This cotton has 8400 yards per lb., and comes on 1/2 lb. tubes. Colors in warp were:

- O - Princeton Orange Cotton
- X - Old Gold Cotton

## WEFT

There were two colors of the Egyptian Cotton used in the weft. One of these was the 20/2 Old Gold Color, and the other was a 20/2 Parakeet Green color.

## REED USED

In our sample, a 16 dent reed was used, and it was triple sleyed 3 ends per dent, or 48 threads per inch. However, it would work just as well if you used a 12 dent reed and had 4 ends per dent for 48 threads per inch.

## IDEA FOR THIS SAMPLE

The idea for this sample is from "FABRICS AROUND THE WORLD."



## COST OF THE FABRIC

Our warp was 40" wide, and set at 48 per inch, or we had 1920 warp ends. We had an 8 yard warp and it took 15 oz. of each of the Princeton Orange and the Old Gold Egyptian Cotton. Thus the total warp cost was \$10.32, or the cost per yard was \$1.29.

We had 7 yards of finished fabric from our 8 yards of warp. It took 13½ oz. of the Old Gold Egyptian Cotton and it took 14 oz. of the Parakeet Green Egyptian Cotton. Thus the total weft cost for 7 yards was \$9.45 or the cost per yard was \$1.35 per yard.

WARP COST PER YARD.....	\$ 1.29
WEFT COST PER YARD.....	1.35
FABRIC COST PER YARD.....	<u>\$ 2.64</u>

## DRAFTS AND DESIGNS

Published monthly (except July and August) by Robin & Russ Handweavers, 533 North Adams St., McMinnville, Oregon.

SUBSCRIPTIONS: \$5.00 per year. Back issues or single copies, 50¢ each. Yearly subscriptions start with the September issue. If you subscribe after September, back issues from then on will be mailed to you, unless you specify that you want your subscription to start with the next September issue.

VOLUME 11, NUMBER 4 - DECEMBER, 1968

### THREADING DRAFT:

8		X	X	X	X	X	X	X	X	X	X
7		0	0	0	0	0	0	0	0	0	0
6		X	X	X	X	X	X	X	X	X	X
5		0	0	0	0	0	0	0	0	0	0
4	X	X	X	X							
3	0	0	0	0							
2	X	X	X	X							
1	0	0	0	0							

### TREADLING SEQUENCE:

There are 56 threads in one treadling repeat, just as there are 56 threads in the threading draft. Treadle as follows:

1. Treadle #1, Parakeet Green
2. Treadle #2, Old Gold
3. Treadle #3, Parakeet Green
4. Treadle #4, Old Gold

REPEAT THESE FIRST FOUR THREADS A TOTAL OF TEN (10) TIMES. Do this until you have 40 threads, 20 of Parakeet Green and 20 of Old Gold. Then proceed on to the following:

5. Treadle #5, Parakeet Green
6. Treadle #6, Old Gold
7. Treadle #7, Parakeet Green
8. Treadle #8, Old Gold

REPEAT THESE FOUR TREADLES A TOTAL OF FOUR (4) TIMES. You will have 8 threads of Parakeet Green and 8 threads of Old Gold.  
END OF ONE PATTERN REPEAT: Repeat over and over as desired.

### COST OF THE THREADS USED:

The 20/2 Egyptian Cotton that was used in the warp and weft is Mercerized and Gassed. It has 8400 yards per pound, and it comes on 1/2 lb. tubes of 4200 yards each. This is priced at \$5.50 per lb., or \$2.75 per 1/2 lb. tube. There are about 100 different colors available.

## MORE ABOUT THIS FABRIC:

You will find this month's sample surprisingly easy to weave, and with no major problems. However, you do want to use a firm, even double beat with the weft threads, so that it will pack in tightly enough to be a usable fabric.

Our sample this month was washed and pressed. We washed it in luke-warm water in the shortest cycle of our automatic washer. Then we used an extractor to remove most of the water. Then it was steam pressed.

After it was washed and pressed, we

### TIE-UP DRAFT:

8	0	0		0	0						
7		0			0	0	0				
6		0	0	0				0			
5					0	0			0	0	
4	0					0	0			0	
3	0	0	0					0			
2				0					0	0	0
1	0			0	0						0
	1	2	3	4	5	6	7	8			

measured it again and found that it had shrunk 6" in length, and the squares are not quite square. This depends upon the individual beat, and you might have to have 4 more threads in the large block, or four less threads, according to the beat and strength of the weaver. I would not change the small block at all, but just the large block to fit so that it is square. From the 7 yards of fabric, we found that it shrank to 6 yards, 30 inches.

There are all kinds of possibilities with this weave. You could make baby blankets, dress yardage, suit material, skirt material. You could use it for a decorative purpose, such as covering a lamp shade or a waste-basket, and the best thing of all, is that you are not limited to two smooth threads as we used, but all kinds of textures and color combinations could be used.

MERRY CHRISTMAS TO ALL, AND THE BEST CHRISTMAS HOLIDAY SEASON EVER. These are the wishes to you from Janice, Debbie, Susan, Robin and Russ.





# drafts and designs

*a guide for 5 to 12 harness weaves*

---

Volume 11, Number 5 - January 1969

NATURAL AND NATURAL GRAY:

A 7 harness linen weave in a Summer and Winter pattern for use in upholstery, table linens, mats and related uses.

WARP:

The warp used is a 50/3 bleached Irish Linen, which has 5,000 yards per lb.

WEFT:

Two imported Danish Linens were used in the weft. One was a 25/1 bleached linen which was used as the tabby thread.

For a pattern thread, we used a 25/1 Danish linen in Natural Grey. We doubled this on the bobbin, so it would almost be the same as a 25/2 linen as the pattern thread.

REED USED:

A 10 dent reed was used and it was sleyed 4 ends per dent, or 40 threads per inch.

COST OF THREADS USED:

We are fortunate to have on hand a quantity of all the threads used in the warp and weft, which is selling for about 1/2 price of what it usually does. The 50/3 linen comes on 1 lb. tubes and is made of Irish linen from Barbour Linen Company. The 25/1 linen in bleached also comes on 1/2 lb. tubes and it is \$1.60 per tube, or \$3.20



per lb. The 25/1 in the natural grey also comes on 1 1/2 lb. tubes and it is \$3.20 per lb. We will wind it off for you onto 1/2 lb. tubes at \$1.60 per 8 oz. tube.

COST OF THE FABRIC:

We had an 8 yard warp, 42" wide, and set at 40 per inch. It took 2 and 3/4 lbs. of the 50/3 linen for warp. The total warp cost was \$8.80 for the 8 yards or \$1.10 per yard.

DRAFTS AND DESIGNS

Published monthly (except July and August) by Robin & Russ Handweavers, 533 N. Adams St., McMinnville, Oregon.

SUBSCRIPTIONS: \$5.00 per year. Back issues or single copies, 50¢ each. Yearly subscriptions start with the September issue. If you subscribe after September, back issues from then on will be mailed to you, unless you specify that you want your subscription to start with the next September issue.

VOLUME 11, Number 5 - January, 1969

TIE-UP DRAFT:

7								X											
6	X	X						X											
5			X	X				X											
4					X	X		X											
3							X	X	X										
2		X	X	X	X	X	X	X	X	X	X	X	X	X	X	X	X	X	X
1	X	X	X	X	X	X	X	X	X	X	X	X	X	X	X	X	X	X	X
	1	2	3	4	5	6	7	8	A	B	X	Y							

THREADING DRAFT:

7																				
6																		X	X	
5	X	X																X	X	
4			X	X								X	X							
3					X	X	X	X	X											
2	X	X	X	X	X	X	X	X	X	X	X	X	X	X	X	X	X	X	X	X
1		X	X	X	X	X	X	X	X	X	X	X	X	X	X	X	X	X	X	X

In the weft, we used 1 lb. 8 oz. of the 25/1 natural grey, doubled on the bobbin as the pattern thread. As the tabby thread, it took just 4 1/2 oz. of the 25/1 bleached linen. This is \$3.20 per lb. for both threads, so the total weft cost was \$5.70 for seven yards of finished fabric from the 8 yard warp. Thus the cost per yard for the weft was 82¢ per yard.

WARP COST PER YARD, 42" WIDE....\$ 1.10  
 WEFT COST PER YARD..... .82  
 FABRIC COST PER YARD.....\$ 1.92

TREADLING SEQUENCE:

- Treadle B...one time
- X...one time
- A...one time
- Y...one time

These 4 treadles are the border treadling, so treadle over and over as desired. Then proceed as follows:

- 1. Treadle B..1 time
  - 2. Treadle 1..1 time
  - 3. Treadle A..1 time
  - 4. Treadle 2..1 time
  - 5. Treadle B..1 time
  - 6. Treadle 1..1 time
  - 7. Treadle A..1 time
  - 8. Treadle 2..1 time
  - 9. Treadle B..1 time
  - 10. Treadle 3..1 time
  - 11. Treadle A..1 time
  - 12. Treadle 4..1 time
  - 13. Treadle B..1 time
  - 14. Treadle 5..1 time
  - 15. Treadle A..1 time
  - 16. Treadle 6..1 time
  - 17. Treadle B..1 time
  - 18. Treadle 7..1 time
  - 19. Treadle A..1 time
  - 20. Treadle 8..1 time
  - 21. Treadle B..1 time
  - 22. Treadle 5..1 time
  - 23. Treadle A..1 time
  - 24. Treadle 6..1 time
  - 25. Treadle B..1 time
  - 26. Treadle 3..1 time
  - 27. Treadle A..1 time
  - 28. Treadle 4..1 time
- End of one complete pattern.

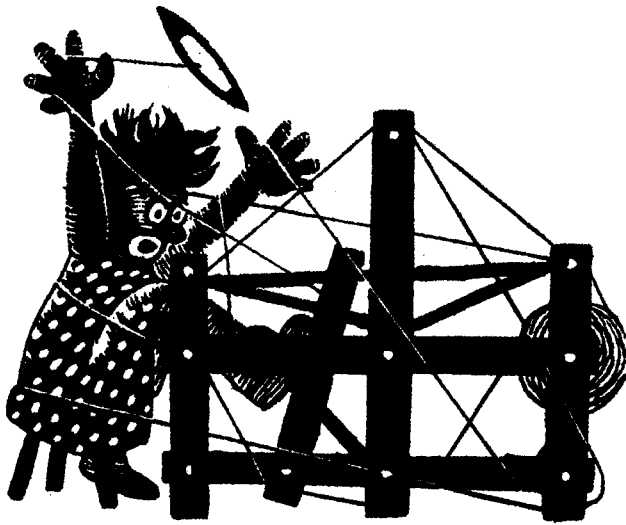
X	X	X	X	7
				6
				5
				4
				3
X			X	2
	X		X	1

MORE ABOUT THIS FABRIC:

One problem in the weaving of this is that the 25/1 linen in the bleached white, and in the natural gray color, are fairly stiff and wiry threads, and as a result, are a little hard to use in a shuttle without backlash problems. In order to eliminate this, here is how it was handled.

We had a saucer which was half full of water. In this, we had 2 soaked sponges. We ran the linen 25/1 in natural gray and white through the sponges and then onto the bobbin. This gave more elasticity to the thread, made it much easier to handle, and as a result, we had many less problems than anticipated in the weaving of this sample.

This dampened the linen thread when we were ready to use it, and also, we found that this linen thread dried very quickly, and it was dry before it could come up over the breast beam or front beam. Still another is that we have listed the border separately on the threading draft. This is actually a 6 harness pattern, but if you want a plain weave border all around the outside, then it is a 7 harness pattern.



# drafts and designs

## *a guide for 5 to 12 harness weaves*

Volume 11, Number 6, February, 1969

### TUFTED TUSSAH

An interesting textured fabric for dress material is this 8 harness extended twill sample. It should also work well in upholstery, in drapery and other materials, with the proper threads.

### WARP

Our warp thread is a 20/2 mercerized, bleached white cotton.

### WEFT

Our weft thread is a combination of Tussah Silk and Viscose Rayon, both spun together in one thread.

### TREADLING SEQUENCE

1. Treadle #1 -- 1 time
2. Treadle #2 -- 1 time
3. Treadle #3 -- 1 time
4. Treadle #4 -- 1 time
5. Treadle #3 -- 1 time
6. Treadle #2 -- 1 time

End of one pattern repeat. Repeat over and over as desired.

### THREADING DRAFT

8				X			X			X	
7				X	X		X	X		X	X
6				X		X	X		X	X	X
5				X			X		X		X
4	X		X		X		X		X		X
3	X		X	X		X	X		X		X
2	X	X		X	X		X	X		X	X
1	X			X			X			X	



## DRAFTS AND DESIGNS

Published monthly (except July and August) by Robin & Russ Handweavers, 533 N. Adams St., McMinnville, Oregon.

SUBSCRIPTIONS: \$5.00 per year. Back issues or single copies, 50¢ each. Yearly subscriptions start with the September issue. If you subscribe after September, back issues from then on will be mailed to you, unless you specify that you want your subscription to start with the next September issue.

VOLUME 11, Number 6 - February, 1969

### REED USED:

A 12 dent reed was used, and it was sleyed 3 ends per dent, or 36 threads per inch.

### MORE ABOUT THIS SAMPLE:

I've been greatly intrigued with the thread that was used in the weft in this fabric. It is a viscose rayon in a glossy white, spun with a natural colored Tussah Silk, and the two make a nice mixture. The thing about this thread is that I felt it was quite appealing, but it sat in the shop for such a long time, without any being sold. So, after selling this yarn to one customer, Mrs. Esther Te Selle, of Stockton, California, I was inspired by her use of the thread, and this is the result.

I might mention that this fabric was washed in luke-warm water, dried in an automatic dryer in the shortest cycle, and then steam pressed by Robin. It has a beautiful hand or feel when it has been processed this way, and it is one fabric that I hate to cut up. It would make a beautiful tailored dress, and would make beautiful drapes, and have many other uses.

We have this same type of combination thread in one about twice as heavy as this Tussah and Viscose combination, and I think it would work beautifully in coat material, and other such fabrics.

This pattern is an interesting one that we used once before in a Drafts & Designs sample, and I would like to try it one more time in a very fine cotton, say like the 50/3 fine weave, or a 40/2 mercerized cotton, and have both of these used in the warp and weft. Should make beautiful light weight dress material.

### COST OF THE THREAD USED:

The 20/2 mercerized white cotton used for warp has 8400 yards per lb. It comes on 1

lb. cones, and is \$3.35 per lb.

The fine Tussah Silk slub with spun viscose has 2800 yards per lb., comes on about 2 to 3 lb. cones. We will wind off 1/2 lb. tubes for anyone interested. It is \$4.80 per lb., and thus the 1/2 lb tubes of 1400 yards would be \$2.40 each.

### COST OF THE FABRIC:

We had an 8-1/4 yard warp, 40" wide, and it took 1 pound and 10 ounces of the 20/2 mercerized cotton for warp. Thus the total warp cost was \$5.45, and the cost per yard was 67¢ per yard for a 40" wide warp at 36 per inch.

In the weft, we had 6 yards and 30 inches of finished fabric from our 8-1/4 yard warp. This took 2 lbs. and 15 ounces of the silk and viscose combination thread. Thus the total weft cost is \$14.10 and the cost per yard for the weft is \$2.07 per yard.

WARP COST PER YARD.....	\$ .67
WEFT COST PER YARD.....	2.07
FABRIC COST PER YARD.....	<u>\$2.74</u>

### SOME NEW INTERESTING BOOKS AVAILABLE

One of the exciting books just available is Peter Collingwood's "Techniques of Rug Weaving." Of course the price is a fancy one too, but the book is jammed full of ideas for rugs. Price \$17.50 plus 30¢ postage.

### SPIN YOUR OWN WOOL AND DYE AND WEAVE IT

This is another excellent book for the handspinner, and it has just come in from New Zealand. Have an idea for an attachment to put on your sewing machine to do spinning. Price is reasonable at \$2.95 plus 18¢ postage for this hard-bound book.

Another unusual weaving technique is taught in the book from New Zealand, which is entitled "THE ART OF TAANIKO WEAVING". It tells of the weaving of the Maori's, a native tribe of New Zealand, and is very, very interesting reading. Price is reasonable at \$3.95 plus 18¢ postage.

TAPESTRIES FROM EGYPT, Woven by the Children of Harrania, is once again in print with the beautiful color photographs of the children's weaving. Price is \$5.95 plus 18¢ postage for these new book arrivals.





# drafts and designs

*a guide for 5 to 12 harness weaves*

Volume 11, Number 7, March, 1969

## SHADES OF PUMPKINS

This upholstery fabric was designed with the shades of different pumpkins and squash in mind. It is another 8 harness twill variation which would be very, very durable for upholstery.

### THREADING DRAFT

8	X			X			
7		X			X		
6			X			X	
5			X			X	
4				X			X
3			X			X	
2				X			X
1			X				X

**WARP:** The warp is a 20/2 mercerized and gassed 20/2 Egyptian cotton in a color called Old Gold.

**WEFT:** In the weft we have 3 colors of the RYAGARN, imported English Rug Wool, and we also used as a tabby thread, a 20/2 Mercerized and Gassed Egyptian cotton in a color called Princeton Orange. The 3 colors of the rug wool used are as follows:

- A - color #110, Bright Orange
- B - color #172, Yellow Gold
- C - color #174, Burnt Orange

**REED USED:** A 15 dent reed was used, and it was double sleyed, 2 ends per dent, or 30 threads per inch.



### TIE-UP DRAFT:

8					X			X		X
7				X			X		X	
6			X			X				X
5		X			X				X	
4	X			X						X
3			X					X	X	
2		X					X			X
1	X					X			X	
	1	2	3	4	5	6	7	8	9	10

## DRAFTS AND DESIGNS

Published monthly (except July and August) by Robin & Russ Handweavers, 533 N. Adams St., McMinnville, Oregon.

SUBSCRIPTIONS: \$5.00 per year. Back issues or single copies, 50¢ each. Yearly subscriptions start with the September issue. If you subscribe after September, back issues from then on will be mailed to you, unless you specify that you want your subscription to start with the next September issue.

VOLUME 11, Number 7, March, 1969

## TREADLING SEQUENCE

I will give the treadling in the easier way of telling it here. There are 24 pattern shots using the Ryagarn for weft, and there are 48 tabby shots in each complete pattern repeat. The treadling sequence is to treadle 1 to 8, three complete times, alternating the Bright Orange, Burnt Orange, and the Yellow Gold. Then, in between each row of these 3 colors, you have two tabby shots, the A & B tabbies alternately, between each row of wool yarn.

In other words, you treadle 1 in Bright Orange, then two tabby; treadle 2 in Burnt Orange, then two tabby; treadle 3 in Yellow Gold, then two tabby; treadle 4 in Bright Orange, then two tabby; treadle 5 in Burnt Orange, then two tabby; treadle 6 in Yellow Gold, then two tabby; treadle 7 in Bright Orange; then two tabby; treadle 8 in Burnt Orange, two tabby; treadle 1 in Yellow Gold, then two tabby; etc. You continue alternating these 3 colors for 24 shots until you have one complete pattern sequence, and then you will be starting on #1 treadle again in the Bright Orange.

## MORE ABOUT THE FABRIC

In this fabric, you want to use a firm, even, double beat. Beat, change to the next shed, and beat again before you throw the shuttle. I feel it is important to use this firm, even, double beat.

This fabric was designed as upholstery material, but we were intrigued when one of our customers purchased the same yarns to use in a coat material for herself.

So, while I do think it is primarily an upholstery material, you can see that different individuals look at a fabric and find different uses for it than was anticipated.

This month, we tried to give you a sort of backed material for an upholstery fabric and so if you will turn this fabric over, you will see that the back has an entirely different appearance than does the front.

This fabric is easy to weave, but you shouldn't talk to anyone when doing it. Because of the fact that there are two tabby shots after each pattern thread, and three different colors in the pattern threads, one complete pattern repeat is fairly long. When you start with all 4 shuttles on the right side, you will find when you have finished one complete pattern repeat, that all 4 shuttles are on the right side again. This is one way to help keep track of where you are. Another is to keep track of each group of 8 pattern threads as you finish them.

## COST OF THE THREADS USED:

The warp threads are 20/2 Egyptian cotton, as are the tabby threads. These come on 1/2 lb. tubes, and it is \$5.50 per lb. or \$2.75 per 1/2 lb. tube.

The English rug wool used for the pattern shots is \$4.80 per lb., and comes in skeins of about 3 1/2 oz. each. It has about 550 yards per lb. This, we purchase in Kilogram packages, as it is made for use primarily in Scandinavia. There are supposed to be 2.2 lbs. per kilogram, and we find it comes to about 2 lbs. and 2 oz. per 10 skeins of yarn.

## COST OF THE FABRIC:

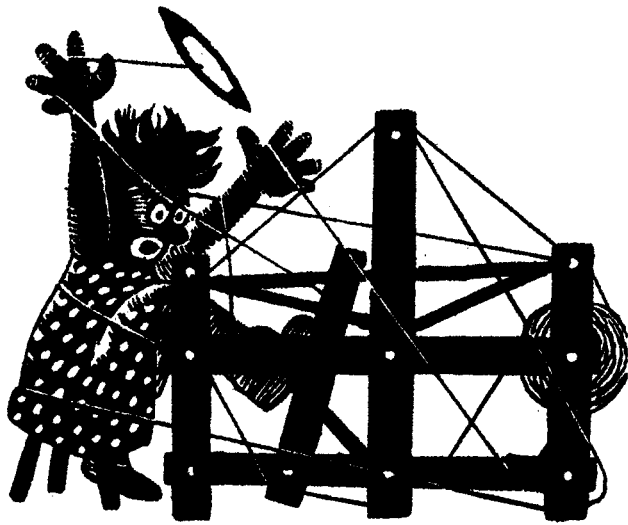
We had a 9 1/2 yard warp, 42" wide, and set at 30 threads per inch. It took 1 lb. 15 oz. of thread for the warp, or the total warp cost was \$10.65. Thus, the cost per yard was \$1.12 for the 42" wide warp.

In the weft, we used 12 1/2 oz. of the Princeton Orange 20/2 Egyptian Cotton. We also used 1 lb. 8 oz. of each of the 3 colors of the Ryagarn, rug yarn in Bright Orange, Burnt Orange and Yellow Gold.

We had 7-2/3 yards of finished fabric when through from the 9 1/2 yard warp. Thus, the weft cost was \$25.73 or the cost per yard was \$3.36.

WARP COST PER YARD.....	\$1.12
WEFT COST PER YARD.....	3.36
FABRIC COST PER YARD.....	<u>\$4.48</u>

\* \* \* \* \*



# drafts and designs

*a guide for 5 to 12 harness weaves*

---

Volume 11, Number 8, April, 1969

## BEIGE, BROWN AND BANANA

An interesting 8 harness lace variation done in a huck weave, which would be excellent for table linens and for drapery.

### WARP:

We used two mercerized ramie threads in the warp in size 20/2.

- X - 20/2 Golden Brown Mercerized Ramie
- O - 20/2 Honey Dew Maize Merc. Ramie

### WEFT:

In the weft, we used the same two threads as were used in the warp.

### REED USED:

An 8 dent reed was used and it was sleyed 3 ends per dent, or 24 threads per inch.

If you do not have an 8 dent, you can use a 12 dent, 2 ends per dent.

### TREADLING SEQUENCE:

1. Treadle #1 - 20/2 Golden Brown
2. Treadle #2 - 20/2 Golden Brown
3. Treadle #1 - 20/2 Golden Brown
4. Treadle #3 - 20/2 Golden Brown
5. Treadle #4 - 20/2 Golden Brown
6. Treadle #3 - 20/2 Golden Brown
7. Treadle #1 - 20/2 Golden Brown
8. Treadle #2 - 20/2 Golden Brown
9. Treadle #1 - 20/2 Golden Brown
10. Treadle #5 - 20/2 Honey Dew Maize
11. Treadle #6 - 20/2 Honey Dew Maize
12. Treadle #5 - 20/2 Honey Dew Maize



13. Treadle #7 - 20/2 Honey Dew Maize
14. Treadle #8 - 20/2 Honey Dew Maize
15. Treadle #7 - 20/2 Honey Dew Maize
16. Treadle #5 - 20/2 Honey Dew Maize
17. Treadle #6 - 20/2 Honey Dew Maize
18. Treadle #5 - 20/2 Honey Dew Maize

END OF COMPLETE PATTERN REPEAT.

Repeat over and over as desired. To balance a place-mat or table cloth so it is the same at both ends, you would repeat the 1st 9 threads at the end so it would be exactly the same as when you began.

DRAFTS AND DESIGNS

Published monthly (except July and August) by Robin & Russ Handweavers, 533 N. Adams St., McMinnville, Oregon.

SUBSCRIPTIONS: \$5.00 per year. Back issues or single copies, 50¢ each. Yearly subscriptions start with the September issue. If you subscribe after September, back issues from then on will be mailed to you, unless you specify that you want your subscription to start with the next September issue.

VOLUME 11, Number 8, April, 1969

THREADING DRAFT:

8			0						
7			0		0				
6		0				0			
5	0	0			0	0			
4								X	
3						X		X	
2					X				X
1			X	X			X	X	

TIE-UP DRAFT:

8	0			0				0	0
7		0	0					0	0
6		0	0		0	0			
5	0			0	0	0			
4			0	0	0				0
3			0	0		0	0		
2	0	0				0	0		
1	0	0			0				0
	1	2	3	4	5	6	7	8	

COST OF THE THREADS USED:

The 20/2, mercerized ramie in the two colors used comes on 1 lb. cones with 3,000 yards per lb. It is \$5.40 per lb., and will probably go up to \$5.60 per lb. in 2 months as we have a new shipment enroute to us. This same thread was used for both warp and weft.

MORE ABOUT THIS FABRIC:

This is an easy pattern to weave, and makes a good, firm, durable material.

You want to use a firm, even, double beat; beating with the shed open, and then changing to the next shed and then beating again.

Also, I feel that if you can weave with a not too tight a tension, that your weft threads will pack in better than if you use an extremely tight tension.

In this warp, I don't think that there was even one broken thread, so that is one of the reasons why it was fairly easy to weave.

COST OF THE FABRIC

We had an 8 yard warp, 42" wide on the loom, and it took 1 lb. 6 oz. of both of the colors for the warp. At \$5.40 per pound, we used 2 lbs. 12 oz. of thread in the warp. Thus the total warp cost was \$9.45 and the cost per yard was \$1.38 per yard.

In the weft, we used 1 lb. 1 oz. of each of the 2 colors, 2 lbs. and 2 oz. at \$5.40 per lb. This was enough to weave 6 yards and 32" of weft. Thus, the total weft cost was \$11.48 or the cost per yard was \$1.70.

WARP COST PER YARD, 42" wide.....\$ 1.38  
WEFT COST PER YARD..... 1.70  
FABRIC COST PER YARD.....\$ 3.08

FORGOTTEN TIE-UP FOR FEBRUARY, 1969

Please excuse our error in not giving the tie-up for the February sample. I do not know how or why I forgot it, but I did. Here it is.

8			0	0	0
7		0		0	0
6		0	0		0
5		0	0	0	
4					0
3				0	
2			0		
1		0			
	1	2	3	4	

6 NEW COLORS IN FINE LOOP MOHAIR

This mohair has 2,250 yards per lb., and comes on 1 lb. cones. The colors are Bright Fuchsia, Blue Turquoise, Flamme Orange, Golden Tan, Aqua Green and Light Avocado. Price is \$4.00 per lb. Robin & Russ Handweavers, 533 North Adams St., McMinnville, Oregon 97128

8 COLORS IN 50% SILK 50% LINEN

Just dyed to order for us, this thread has about 5,000 yards per lb. The colors are Spring Green, Orange Gray, Creamy Tan, Lake Blue, Lichen Yellow, Foam Green, Happy Blue and Heather Green. Price is \$3.20 per lb. Excellent for weft in dress yardage, blouse material, etc. Robin & Russ Handweavers, 533 North Adams St., McMinnville, Oregon 97128

\*\*\*\*\*





# drafts and designs

*a guide for 5 to 12 harness weaves*

Volume 11, Number 9, May, 1969

## GREENSLEEVES

An interesting 8 harness twill variation made for use in skirts, dresses and tailored suits.

### WARP:

The warp thread is our new 2/18's Fabri-type worsted yarn, imported from England, in two colors.

- X - 2/18's worsted, Dark Avocado
- O - 2/18's worsted, Light Avocado

### THREADING DRAFT:

8	0						X		
7		0						X	
6			0						X
5				0					X
4					0				X
3						0			X
2							0		X
1								0	X

### TIE-UP DRAFT:

8				0		0	0	0		0
7			0		0		0	0	0	
6		0			0	0		0		0
5	0				0	0	0		0	
4		0	0	0				0		0
3	0		0	0			0		0	
2	0	0		0		0				0
1	0	0	0		0					0
	1	2	3	4	5	6	7	8	9	10
									A	B



### WEFT:

The weft thread is the 2/18's Fabri-type worsted yarn in a light turquoise color.

### REED USED:

A 12 dent reed was used, and it was double sleyed, 2 ends per dent, or 24 threads per inch.

DRAFTS AND DESIGNS

Published monthly (except July and August) by Robin & Russ Handweavers, 533 N. Adams St., McMinnville, Oregon.

SUBSCRIPTIONS: \$5.00 per year. Back issues or single copies, 50¢ each. Yearly subscriptions start with the September issue. If you subscribe after September, back issues from then on will be mailed to you, unless you specify that you want your subscription to start with the next September issue.

VOLUME 11, Number 9, May, 1969

TREADLING SEQUENCE:

- Treadle #5, Light Turquoise 2/18's
- Treadle #8, Light Turquoise 2/18's
- Treadle #7, Light Turquoise 2/18's
- Treadle #6, Light Turquoise 2/18's
- Treadle #5, Light Turquoise 2/18's
- Treadle #6, Light Turquoise 2/18's
- Treadle #7, Light Turquoise 2/18's
- Treadle #8, Light Turquoise 2/18's
- Treadle #4, Light Turquoise 2/18's
- Treadle #1, Light Turquoise 2/18's
- Treadle #2, Light Turquoise 2/18's
- Treadle #3, Light Turquoise 2/18's
- Treadle #4, Light Turquoise 2/18's
- Treadle #3, Light Turquoise 2/18's
- Treadle #2, Light Turquoise 2/18's
- Treadle #1, Light Turquoise 2/18's

END OF ONE COMPLETE PATTERN REPEAT.

There are 16 shots in each complete pattern repeat. Repeat over and over as desired.

COST OF THE THREADS USED:

The fabri-type yarn 2/18's worsted, comes on 1/2 lb. cones (actually, they vary from 7 to 9 ounces), and so we weigh each one and check it before shipping. It has about 4,850 to 4,900 yards per pound, and is priced at \$6.80 per lb. If we find a 1/2 lb. cone, it is \$3.40. This is the same price as the fabric used to be before its last price increase. Believe it went up to \$7.60 if I remember correctly.

COST OF THE FABRIC:

In the warp for 11 yards, 40" wide, it took 1 pound and 1/2 oz. of both the light and dark avocado. Thus, the warp cost was \$14.03 for the 11 yards, or the cost per yard is \$1.28 per yard.

In the weft, we used 1 lb. 13 oz. of the Light Turquoise fabri-type worsted, and this cost was \$1.28 per yard for the 9-2/3rds yards of finished fabric.

WARP COST PER YARD.....	\$ 1.28
WEFT COST PER YARD.....	1.28
FABRIC COST PER YARD.....	\$ 2.56

\* \* \* \* \*

MORE ABOUT THE FABRIC:

This is our first use of the new 2/18's worsted, Fabri-type yarns which we had made to order, and spun and dyed for us in England.

We were pleased with the results, but feel that we could have improved upon this fabric a little by beating a little tighter than we did on our sample. The pattern will stand out a little more than it does now, and yet, this is very soft, and pleasing to the touch now.

We tried to duplicate or have duplicated the Fabri formerly manufactured by Bernat's.

This yarn is quite close to the 2/18's we had before from Bernat's, but I do feel that it looks slightly finer. It seems to be stronger, has a good elasticity, and does not fuzz or cling. It might have been a better sample this month if we had made this at 30 threads per inch instead of 24. This yarn was moth-proofed for us, and it does come in 19 interesting colors. We will eventually have another 16 colors dyed, until we have a full color line of 35 colors.

We have had several customers use this at 30 per inch in other twill variations and they have been very pleased with it.

IF YOU WOULD LIKE A FREE SAMPLE SHEET OF THESE 19 COLORS IN 2/18'S WORSTED, DROP US A LINE, AND ASK FOR THE FABRI-TYPE SAMPLES.

In a 11 yard warp, 42" wide, we had no broken threads in this warp, and even on the selvage edge there were no broken threads, and nothing else was added to give strength on the selvage edge.

From an 11 yard warp, 40 inches wide, we were able to get 9 and 2/3rds yards of finished fabric after it was off the loom. It was measured after it was off the loom and not on the loom under tension.

I should also mention that in the weaving of this fabric, after the first yard, we used a temple or stretcher, and it made the fabric about 1" wider, and made a much nicer selvage from then on.

This sample has been washed in warm water, extracted in the drier, and then steam pressed. Feel how nice and soft it is now.

Remember, one suggestion for improvement of this sample. Beat a little tighter than we did, or if you do not want to do this, set it at 30 per inch instead of 24. Do either one of these, and you will like it even better than our sample.



# drafts and designs

## a guide for 5 to 12 harness weaves

Volume 11, Number 10, June, 1969

### BOISTEROUS OLIVES AND BROWN

This interesting 8 harness fabric was designed for sport coats, for tailored skirts and suits, etc.

#### WARP:

The warp thread is our new 2/18's Fabri-type worsted yarn, which we are having spun to order, dyed, and importing from England. Two colors were used in the warp.

- X - 2/18's, Light Avocado
- O - 2/18's, Dark Avocado

#### THREADING DRAFT:

8	O						X		
7		O					X		
6			O				X		
5				O			X		
4					O		X		
3						O	X		
2							O	X	
1								O	X

#### TIE-UP DRAFT:

8				O		O	O	O		O
7			O		O		O	O	O	
6		O			O	O		O		O
5	O				O	O	O		O	
4		O	O	O				O		O
3	O		O	O			O		O	
2	O	O		O		O				O
1	O	O	O		O				O	
	1	2	3	4	5	6	7	8	9	10
									A	B



#### WEFT:

Two colors of the new 2/18's worsted were used in the weft. One of these is the Cocoa Brown, and the other is the dark avocado.

#### REED USED:

A 15 dent reed was used on this project and it was double sleyed, 2 ends per dent or 30 threads per inch.

## DRAFTS AND DESIGNS

Published monthly (except July and August)  
by Robin & Russ Handweavers, 533 N. Adams  
St., McMinnville, Oregon.

SUBSCRIPTIONS: \$5.00 per year. Back issues  
or single copies, 50¢ each. Yearly subscrip-  
tions start with the September issue. If  
you subscribe after September, back issues  
from then on will be mailed to you, unless  
you specify that you want your subscription  
to start with the next September issue.

Volume 11, Number 10 - - June, 1969

### TREADLING SEQUENCE:

Treadle #5, Light Turquoise 2/18's  
Treadle #8, Light Turquoise 2/18's  
Treadle #7, Light Turquoise 2/18's  
Treadle #6, Light Turquoise 2/18's  
Treadle #5, Light Turquoise 2/18's  
Treadle #6, Light Turquoise 2/18's  
Treadle #7, Light Turquoise 2/18's  
Treadle #8, Light Turquoise 2/18's  
Treadle #4, Light Turquoise 2/18's  
Treadle #1, Light Turquoise 2/18's  
Treadle #2, Light Turquoise 2/18's  
Treadle #3, Light Turquoise 2/18's  
Treadle #4, Light Turquoise 2/18's  
Treadle #3, Light Turquoise 2/18's  
Treadle #2, Light Turquoise 2/18's  
Treadle #1, Light Turquoise 2/18's

END OF ONE COMPLETE PATTERN REPEAT.

There are 16 shots in each complete pattern  
repeat. Repeat over and over as desired.

### COST OF THE THREADS USED:

The fabri-type yarn 2/18's worsted, comes  
on 1/2 lb. cones (actually, they vary from  
7 to 9 ounces), and so we weigh each one and  
check it before shipping. It has about 4,850  
to 4,900 yards per pound, and is priced at  
\$6.80 per lb. If we find a 1/2 lb. cone, it  
is \$3.40. This is the same price as the  
fabric used to be before its last price in-  
crease. Believe it went up to \$7.60 if I  
remember correctly.

### COST OF THE FABRIC:

We had a 9 yard warp, 42" wide, set at  
30 threads per inch. It took 2 lbs. 5 oz.  
of warp in all, in the 2 colors, so the warp  
cost was \$15.75. We received 8 yards and 4  
inches of fabric from this 9 yard warp, so  
the warp cost per yard for the finished  
fabric (including loom waste) was \$1.97 per  
yard. In other words, we are including the  
loom waste in this cost per yard, so the  
actual warp of the finished fabric was \$1.97  
per yard.

In the weft, because of the firm beat  
we used, it took almost exactly the same  
amount of thread for weft as was used for  
warp, so the weft cost was \$1.97.

Thus the total cost of the fabric in-  
cluding loom waste, was \$3.95 per yard,  
or \$31.96 for 8 yards and 4 inches.

### MORE ABOUT THIS FABRIC

I would like you to notice the differ-  
ence between the sample this month, and  
the sample we had in May. The same warp  
thread was used in both of them, but  
notice what a difference the use of dif-  
ferent colored weft threads makes. Also,  
this fabric was planned with the thought  
in mind of using it for sport coats, and  
was set closer at 30 per inch, instead  
of 24 per inch, as was the sample last  
month. We did not wash this sample, but  
it would be somewhat softer when it is  
washed, and yet, it would have the ideal  
body and weight for a sport coat.

In this entire project, there were  
only a few knots, three if I remember cor-  
rectly, so we're very pleased with the  
quality of this yarn that we have had spun  
to duplicate Bernat's FABRI, as closely  
as we possibly could.

We also used a temple or stretcher, and  
there were no supplementary threads used  
on the selvages to add strength, and there  
were no frayed or broken selvage threads  
on this piece.

This yarn has approximately 5,000 yards  
per lb., and we have 19 colors available  
on approximately 1/2 lb. cones.

Also, we have just ordered another 16  
colors, so that we will have a total of  
35 colors in all. We must say, however,  
that it will take about 4 to 6 months for  
us to get the new colors, as the yarn has  
to be spun, and then dyed, and coned, and  
then shipped from England.

### EXCUSE THE DELAY

We were away in May from the 7th to the  
29th, and had a wonderful trip to Switzer-  
land. Found some wonderful silk, and also  
ordered about 800 lbs. of smooth spun silk  
in colors for the shop. We also ordered  
some ramie in new colors, and found some  
linens in the most beautiful colors that  
we do hope eventually to have some of that  
in stock also. Because of this trip, both  
Drafts and Designs, and Warp and Weft are  
later than usual.

\* \* \* \*