

drafts and designs

a guide for 5 to 12 harness weaves

Volume 13, Number 1 - September, 1970

HEIMATVERKSCHULE - A SWISS PATTERN

While in Switzerland in 1969, I came across this pattern at the Swiss, HEIMATVERKSCHULE, a school of handcrafts, and with their permission, I have used it, and present it herewith.

WARP THREADS USED:

Our warp was the 2/18's worsted, we import from England in a color called Golden Brown.

WEFT THREAD USED:

Our weft was the 2/18's worsted in another new color called "Vicuna Tan." This too, is the English worsted, made to resemble fabri as closely as possible.

REED USED:

A 15 dent reed was used, and it was double sleyed, 2 ends per dent, or 30 threads per inch.

WIDTH ON LOOM

Our fabric was set up 40" wide on the loom.

WIDTH OF FABRIC AFTER WEAVING:

Our fabric was about 37" wide after it was woven, even though we started with a 40" wide warp. We found that this type of weave seems to draw in the weft more than normal, and I think that this is characteristic of this type of weave.



MORE ABOUT THE FABRIC:

This was a very easy fabric to weave, and it was easy because of several reasons. One is the quality of the yarn that was used. In 8 yards of warp, 40" wide, we had no broken warp threads. However, we did use a selvage on both edges of 16 threads of a fine rayon. We did this to try and keep the fabric from weaving in narrower than it ended up.

Also, this is a case where a stretcher

DRAFTS AND DESIGNS

Published monthly (except July and August) by Robin & Russ Handweavers, 533 N. Adams St., McMinnville, Oregon.

SUBSCRIPTIONS: \$5.00 per year. Back issues or single copies, 50¢ each. Yearly subscriptions start with the September issue. If you subscribe after September, back issues from then on will be mailed to you, unless you specify that you want your subscription to start with the next September issue.

VOLUME 13, Number 1 - September, 1970

THREADING DRAFT:

8	X	X	X		X	X	X	X		
7		X	X	X		X	X		X	
6	X			X	X		X	X		
5	X	X			X	X			X	
4		X	X			X	X	X		
3	X		X	X				X		X
2	X	X		X	X				X	
1		X	X		X	X				X

TIE-UP DRAFT:

8			X	X		X	X		X	
7				X	X		X	X		X
6	X				X	X		X	X	
5	X	X				X	X			X
4		X	X				X	X	X	
3	X		X	X				X		X
2	X	X		X	X				X	
1		X	X		X	X				X

1 2 3 4 5 6 7 8 9 10
A B

or temple does come in handy, and this will save you about two to three inches in width if you use a stretcher or temple, as well as eliminating the worrisome problem of freyed selvage threads and broken selvage threads.

SOURCE OF THIS PATTERN:

This pattern is from the Swiss Home Handcraft School that I visited in 1969 in Switzerland. They were doing it in a fine yarn like our sample, and I was intrigued with it. However, I can see many, many other uses for this pattern in cottons, silks, linens, etc., and so that was one of the reasons why I wanted to feature this pattern.

I might mention that I wrote a two page article in Warp and Weft last fall about this particular school, and also the fact that you can go and take weaving instruction there, as well as many other places.

TREADLING SEQUENCE:

The treadling sequence for this pattern is exactly as it is threaded in the threading draft.

I will repeat it here for your convenience, but you can also copy it from the threading draft.

Treadle 1,2,3,2,3,4,3,4,5,4,5,6,5,6,7,6,7,8,7,6,7,6,5,6,5,4,5,4,3,4,3,2,3,2,1,2,1,8,1,8,7,8,7,6,7,6,5,6,7,6,7,8,7,8,1,8,1,2,1,2,3,2,3,4,3,4,5,4,5,6,5,6,7,6,7,8,7,8,1,8,1,2. End of one complete pattern. Repeat over and over as desired.

Please note that there are 82 threads in one complete pattern repeat.

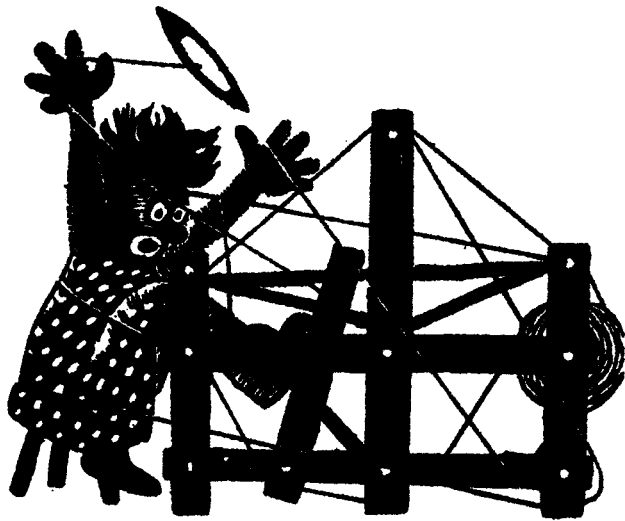
COST OF THE YARNS USED:

The 2/18's, English, Fabri-type worsted, is \$6.80 per lb., and comes on approximately 8 to 11 oz. cones. We asked for it to be on 1/2 lb. cones, but it came on slightly larger ones in some cases. When we order again, we will insist that it come on 1/2 lb. cones, but meanwhile we have to sell it as it is, by the cone.

COST OF THE FABRIC:

From our 8 yard warp, we received six yards and 30" of fabric, so that you can see that there is a good deal of take up in the length of the warp, as well as in the width of the fabric. In the warp, we used 1 lb. 15 oz. of the Golden Brown, and in the weft, we used 1 lbs. 12 oz. of the Vicuna Tan. Both of these are \$6.80 per lb. Thus, our warp cost was \$13.17 for 8 yards of warp on the loom or 6-5/6 yards of finished weft off the loom. Thus, the actual original warp cost was \$1.65 per yard. If you break the cost down to cost per yard of warp in the finished fabric, and including loom waste, then our warp cost was approximately \$2.00 per yard. In our weft, it took the 1 lb. 12 oz. for 6-5/6 yards, so the weft cost per yard was \$1.89 per yard.

WARP COST PER YARD.....	\$ 2.00
WEFT COST PER YARD.....	1.90
FABRIC COST PER YARD....	\$ 3.90



drafts and designs

a guide for 5 to 12 harness weaves

Volume 13, No. 2 - October, 1970

TEEN-AGE DELIGHT

This fabric was planned for use by the teen-agers of today, as a poncho, or a vest such as you see many young girls wearing today.

WARP: Our warp thread was a 2/18's, fabri-type worsted, in a color called Rose-Brick.

WEFT: Four ends of 2/18's worsted, 2 ends each of two colors, were used as the weft thread. The colors were Burgandy Red, and Rose-Pink, and 2 ends of each color, or all 4 ends were all wound upon one bobbin.

REED USED:

A 10 dent reed was used, and it was sleyed 4 ends per dent, or 40 threads per inch. Yes, that is right, 40 threads per inch.

TIE-UP DRAFT:

8	0	0	0						0	
7	0	0			0		0		0	
6	0			0			0	0		
5			0				0		0	
4	0	0	0				0	0	0	
3	0	0	0			0	0	0		0
2	0	0	0		0	0	0	0	0	
1	0	0	0	0	0	0	0			0
	1	2	3	4	5	6	7	8	9	10
					A	B				



COST OF THE THREADS USED:

The 2/18's worsted comes in 39 colors and we do have them all in stock by the time you will receive this issue. It comes on approximately 1/2 lb. cones, and is \$6.80 per pound. We have sample sheets of the last 20 colors made up, and will shortly make up more of the first 19 colors. It has 4800 yards per pound, or 2400 yards per 1/2 pound cone.

DRAFTS AND DESIGNS

Published monthly (except July and August) by Robin & Russ Handweavers, 533 N. Adams St., McMinnville, Oregon.

SUBSCRIPTIONS: \$5.00 per year. Back issues or single copies, 50¢ each. Yearly subscriptions start with the September issue. If you subscribe after September, back issues from then on will be mailed to you, unless you specify that you want your subscription to start with the next September issue.

Volume 13, No. 2 - October, 1970

THREADING DRAFT:

8	X X									X X
7		X X								X X
6			X X							X X
5				X X						X X
4					X X					X X
3						X X				X X
2							X X	X X	X X	X X
1	X X							X X	X X	X X

TREADLING SEQUENCE:

There are 15 shots in each complete repeat of the pattern, and please remember that there are 4 threads wound together on one bobbin, and this is used for each "shot" of the shuttle.

- Treadle #1 - one time
- Treadle #2 - one time
- Treadle #3 - one time
- Treadle #4 - one time
- Treadle #5 - one time
- Treadle #6 - one time
- Treadle #7 - one time
- Treadle #8 - one time
- Treadle #7 - one time
- Treadle #6 - one time
- Treadle #5 - one time
- Treadle #4 - one time
- Treadle #3 - one time
- Treadle #2 - one time

End of one complete pattern repeat.

Repeat over and over as desired.

SOURCE OF THE PATTERN:

This is a pattern that I found in Switzerland, and there it was being used for upholstery. However, there they were using a cotton or linen warp, and a very heavy bulky wool yarn even heavier than 4 ply knitting worsted as the weft yarn.

I thought it might be fun to devise another use for this pattern, so the idea of a vest or poncho seemed appeal-

ing, and so we planned it for this purpose. I also think that in the proper materials, it would be exciting for decorative purposes, such as covering a lamp shade or covering a waste-basket, or for making interesting pillows.

MORE ABOUT THIS FABRIC:

This was another fabric that was very easy to weave, and actually was a pleasure to weave. There were almost no problems in the weaving.

We did set up the fabric 41" wide on the loom, plus on both selvage edges, we added 10 threads of 10/3 cotton. This helped to keep the fabric from pulling in

Also, while the threading draft has 2 threads on each harness together, we used a separate heddle for each thread, and did sley the reed 4 ends per dent.

Also, because of the heavier weft thread, there is a tremendous amount of take-up in this fabric, and we came out with about 8 yards of fabric, on the 10 yard warp.

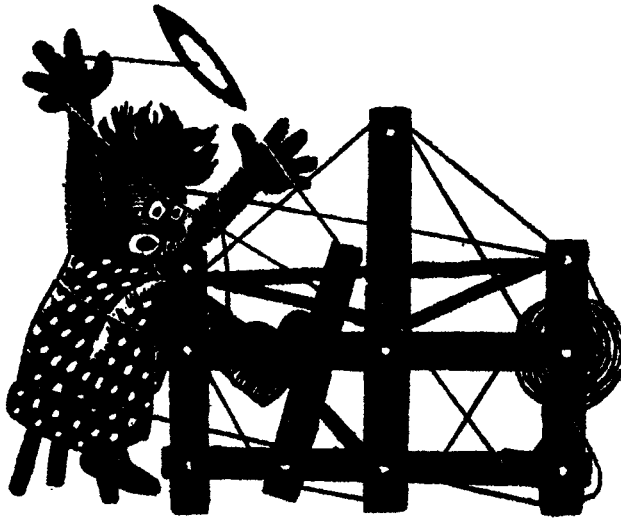
COST OF THE FABRIC:

It took 3 lbs. of the 2/18's worsted in Rose Brick for the warp, 41" wide and 10 yards long. Thus the warp cost came to \$20.40, or the cost per yard comes to \$2.02 per yard.

In the weft, we used 3 lbs. 12 oz. of each of the rose brick and the burgundy red worsted yarn. This does make this sample an expensive fabric as the weft came to 7½ lbs. at \$6.80 per lb. or \$51.00 for 8 yards of weft. Thus the weft cost per yard was \$6.38.

WARP COST PER YARD, 41" WIDE..\$2.02
 WEFT COST PER YARD..... 6.38
 FABRIC COST PER YARD.....\$8.40

This seems sort of unbelievable, but we did keep close track of the thread used, and this was the actual cost.



drafts and designs

a guide for 5 to 12 harness weaves

Volume 13, Number 3 - - November, 1970

CREPE SUZETTES

This interesting 12 harness weave with a crepe weave background, has an interesting overlay of threads to create an attractive pattern.

WARP: 18/2 worsted yarn, our own import from England, made to resemble Fabri, in two colors. Color #32, Antique Gold, and color #35, Creme Green.

WEFT: The same two 18/2 worsted yarns as were used in the warp, are also used in the weft.

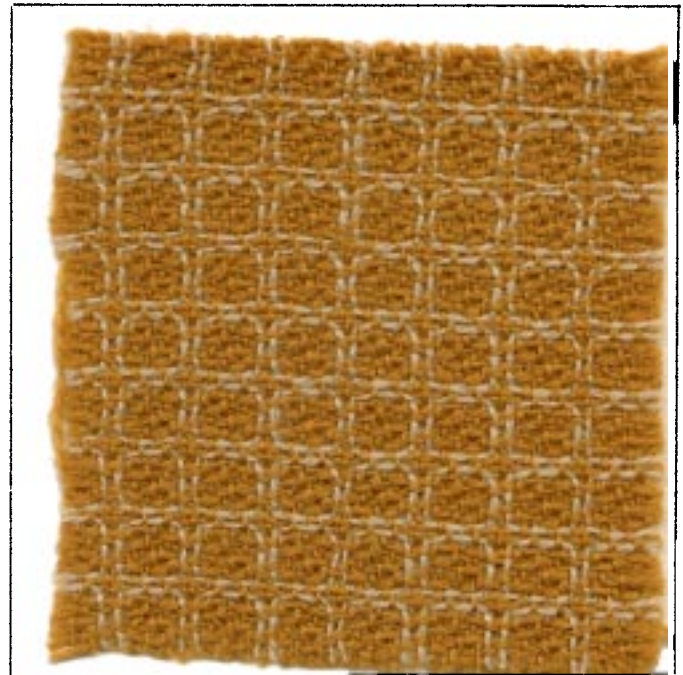
REED USED: A 15 dent reed was used, and it was double-sleyed, 2 ends per dent, or 30 threads per inch.

THREADING DRAFT:

12											X
11											X
10										X	
9									X		
8								X			
7							X				
6					X						
5				X							
4			O								
3		X									
2	X										
1	O										

KEY TO THREADS IN THE WARP:

X - 18/2 Worsted #32, Antique Gold
O - 18/2 Worsted #35, Creme Green



MORE ABOUT THE FABRIC:

We did find that a stretcher was a great help in the weaving of this fabric. We did not use any cotton selvage threads, but just the wool itself, and the stretcher allowed it to weave about two inches wider than it would have without the stretcher.

There were almost no broken threads in the warp, except for one area in the warp, where when the thread was spun, there were a couple of slubs. We cut this out and replaced it with another thread and then there were no other problems whatsoever.

DRAFTS AND DESIGNS

Published monthly (except July and August) by Robin & Russ Handweavers, 533 N. Adams St., McMinnville, Oregon.

SUBSCRIPTIONS: \$5.00 per year. Back issues or single copies, 50¢ each. Yearly subscriptions start with the September issue. If you subscribe after September, back issues from then on will be mailed to you, unless you specify that you want your subscription to start with the next September issue.

VOLUME 13, Number 3 - NOVEMBER, 1970

TIE-UP DRAFT:

12	0				0	0		0	0	0		0
11	0	0	0	0	0				0			
10	0			0			0	0				0
9				0		0	0		0		0	0
8		0	0		0				0	0		0
7	0	0			0	0		0	0			
6				0	0		0	0				0
5	0		0	0				0	0		0	0
4		0				0			0	0	0	
3	0	0	0		0	0	0				0	
2		0	0	0		0	0	0				0
1			0				0			0	0	0
	1	2	3	4	5	6	7	8	9	10	11	12

TREADLING SEQUENCE:

1. Treadle #1 - Antique Gold 2/18's
2. Treadle #2 - Antique Gold 2/18's
3. Treadle #3 - Antique Gold 2/18's
4. Treadle #4 - Antique Gold 2/18's
5. Treadle #5 - Antique Gold 2/18's
6. Treadle #6 - Antique Gold 2/18's
7. Treadle #7 - Antique Gold 2/18's
8. Treadle #8 - Antique Gold 2/18's
9. Treadle #9 - Creme Green 2/18's
10. Treadle #10 - Antique Gold 2/18's
11. Treadle #11 - Antique Gold 2/18's
12. Treadle #12 - Creme Green 2/18's

End of one complete pattern repeat. Repeat over and over as desired.

We did use a light double beat on this fabric, beating with the shed open, and then changing to the next shed, and beating again with the shed open.

We find that if you weave in this manner, there is very little chance for any warp threads to cling together, and as a result, it makes for much easier weaving.

And the treadling is a very easy and simple one, as it is a walking treadling, treadling from one to twelve, with just the two shots of different color.

A simple and easy fabric to weave, and a very pleasing one.

We would suggest that when you do finish your fabric, that you rinse it out and perhaps use lux or ivory snow in the washing, and rinse it thoroughly. After you allow it to drip dry, then you should steam press it, and it will then be all ready to use.

COST OF THE THREADS USED:

The 2/18's worsted yarn, comes in 39 colors which we had dyed to order for us. It comes on approximately 1/2 lb. cones and it has about 4800 yards per lb. It is priced at \$6.80 per pound, or \$3.40 per 1/2 pound tube. When you do receive this issue of drafts and designs, we should have all 39 colors once again in stock.

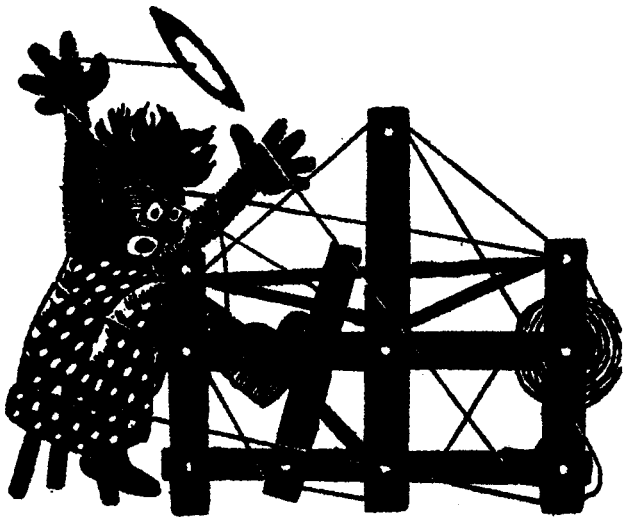
COST OF THE FABRIC:

In the warp, 8 yards, 42" wide, it took 1 lb. and 12 ounces of the #32, Antique Gold and it took 6 ounces of the #35, Creme Green. Thus, the total warp cost was \$14.45 for the 8 yards of warp, or \$1.45 per yard.

In the weft, we had 7 yards of the finished fabric. It took 1 lb. and 2 ounces of the Antique Gold, and 5 ounces of the Creme Green. Thus, our total weft cost for 7 yards was \$9.78 or \$1.40 per yard.

WARP COST PER YARD, 42" Wide...\$1.45
 WEFT COST PER YARD..... 1.40
 FABRIC COST PER YARD.....\$2.85

THE PACIFIC NORTHWEST WEAVING CONFERENCE WILL BE HELD AT THE HILTON HOTEL IN PORTLAND, OREGON April 30 and May 1 and 2, 1971. If you will possibly be in the area, the Portland Handweavers Guild would like to invite you to visit our conference. There will be three outstanding speakers, a banquet and fashion show, and many open houses where you can visit weaving shops, or studios, or see special displays just on exhibition for this conference. For further information, write to: Mrs. Mildred Marshall, 3425 N. E. Ainsworth, Portland, Oregon 97211



drafts and designs

a guide for 5 to 12 harness weaves

Volume 13, Number 4, December 1970

A POLYCHROME IN THREE COLORS

Our sample this month is an 8 harness polychrome weave, which we thought would make a beautiful coat, be good for bedspreads, and have many, many other uses. It is a double weave.

WARP

Three colors of our 2/18's worsted yarns which we import from England were used in the warp. They are:

- U - 2/18's Worsted, Creme Green
- X - 2/18's Worsted, Antique Gold
- O - 2/18's Worsted, Yellow Green

WEFT USED

The same three colors were used in the weft that were used in the warp.

REED USED

A 10 dent reed was used, and it was sleyed 4 ends per dent, or 40 threads per inch. It was sleyed this close because it is a double weave.

THREADING DRAFT

8		U		U		U		O		O		X		X		X			
7		X		U		O		U		O		X		O		X		U	
6			U		U		U		O		O		O		X		X		X
5			X		U		O		U		O		X		O		X		U
4	U			U		U		O		O		O		X		X		X	
3	X			U		O		U		O		X		O		X		U	
2		U			U		U		O		O		O		X		X		X
1	X			U		O		U		O		X		O		X		U	
		3X		3X		3X		3X		3X		3X		3X		3X		3X	

Sample on next page



DRAFTS AND DESIGNS

Published monthly (except July and August) by Robin & Russ Handweavers, 533 N. Adams St., McMinnville, Oregon.

SUBSCRIPTIONS: \$5.00 per year. Back issues or single copies, 50¢ each. Yearly subscriptions start with the September issue. If you subscribe after September, back issues from then on will be mailed to you, unless you specify that you want your subscription to start with the next September issue.

VOLUME 13, Number 4, December, 1970

SOURCE OF IDEA FOR THIS PROJECT

We are indebted for the idea for this sample to the Indiana Weavers' Guild. They had a sample in different colors in one of their bulletins, and it inspired us to try it in other colors and thus our sample.

Also, while I'm writing this, I want to give credit for another sample we did to the proper source. The April, 1970 sample was called Orange Flame, and the idea for the warped face pattern was a result of a similar sample in the bulletin of the Pineellas Weavers' Guild of Florida.

TREADLING SEQUENCE:

We will write the treadling in a different method this time, reading across the treadling sequence below, from left to right. There are 9 units of treadling 1,2,3,4-3 times and 5,6,7,8-3 times, so there are 216 threads in one repeat of both the pattern and the treadling.

- | | | |
|----|--------------|--------------|
| | 1 2 3 4 | 5 6 7 8 |
| 1. | X,U,X,U,-3 x | X,U,X,U,-3 x |
| 2. | U,U,U,U,-3 x | U,U,U,U,-3 x |
| 3. | X,0,X,0,-3 x | X,0,X,0,-3 x |
| 4. | 0,X,0,X,-3 x | 0,X,0,X,-3 x |
| 5. | 0,0,0,0,-3 x | 0,0,0,0,-3 x |
| 6. | 0,U,0,U,-3 x | 0,U,0,U,-3 x |
| 7. | U,0,U,0,-3 x | U,0,U,0,-3 x |
| 8. | U,U,U,U,-3 x | U,U,U,U,-3 x |
| 9. | U,X,U,X,-3 x | U,X,U,X,-3 x |

End of one complete pattern repeat. This is 216 threads. Remember, read from left to right 1,2,3,4 and repeat 3 times and then 5,6,7,8 and repeat 3 times in one color sequence and then repeat the same treadling in the next color sequence.

MORE ABOUT THE FABRIC:

First of all, your sample might not

(Cont.)

TIE-UP DRAFT:

8	0	0		0	0			
7		0			0	0	0	
6		0	0	0			0	
5				0	0		0	0
4	0				0	0		0
3	0	0	0			0		
2			0			0	0	0
1	0		0	0				0
	1	2	3	4	5	6	7	8

show a complete repeat. Each pattern repeat is 5 1/2" wide, and we have cut to the best advantage from the 10 yards of finished fabric, to cut out some 500 samples.

COST OF THE THREADS USED:

The 2/18's worsted comes in 39 colors, was made to resemble the original Bernat Fabri, as closely as possible, and it has approximately 4800 yards per lb. It comes on 1/2 lb. cones (approximately) and is \$6.80 per lb.

COST OF THE FABRIC:

In the warp, it took approximately 1 lb. 5 oz. of each of the 3 colors. This is very close to 4 lbs., so we will say that it was 4 lbs. total warp, or \$27.20 for the warp. The warp cost was \$2.27 per yard.

In the weft, we used approximately 1 lb. of each of the three colors, so the weft cost was \$20.40, or \$2.04 per yard, for this fabric.

WARP COST PER YARD.....	\$2.26
WEFT COST PER YARD.....	2.04
FABRIC COST PER YARD.....	<u>\$4.30</u>

MORE ABOUT THE FABRIC, CONTINUED.

One thing that we will tell you is that it is hard to keep a good selvage on this project. And, we will suggest that you use a temple or stretcher at all times on this fabric. It will be a great help.

You should use a firm, double beat, not the tightest beat in the world, but a good firm, double beat, beating first on one shed, and then while the beater is still up against the web of the fabric, you change sheds and beat again. We found more trouble in the shed clearing when going from treadle 4 to treadle 5 and from treadle 8 to treadle 1. Be sure the shed is clear on these two changes before you throw the shuttle.



drafts and designs

a guide for 5 to 12 harness weaves

Volume 13, Number 5 - January, 1971

CHECKMATE:

Our sample this month is an interesting 8 harness twill weave that we suggest you use for coat material, for afghans, and lap robes or couch throws.

WARP THREADS USED:

We used the 2 ply English Rug Yarn that we import, and which is made basically by the company in England for use in the Scandinavian countries. We now have it in stock in some 47 different colors. In the warp we used these 4 colors.

- X - Light Avocado, #160
- A - Blue Turquoise, #170
- B - Frost Grey, #102
- O - Light Maize, #108

KEY TO COLORS IN THE WARP:

- X - Light Avocado Ryagarn
- A - Blue Turquoise Ryagarn
- B - Frost Grey Ryagarn
- O - Light Maize Ryagarn



THREADING DRAFT:

8	X		A		B		O
7		X		A		B	O
6			X		A		B
5				X		A	B
4					X		A
3						X	A
2							X
1							

DRAFTS AND DESIGNS

Published monthly (except July and August) by Robin & Russ Handweavers, 533 N. Adams St., McMinnville, Oregon.

SUBSCRIPTIONS: \$5.00 per year. Back issues or single copies, 50¢ each. Yearly subscriptions start with the September issue. If you subscribe after September, back issues from then on will be mailed to you, unless you specify that you want your subscription to start with the next September issue.

Volume 13, Number 5 - January, 1971

TIE-UP DRAFT:

8	0	0	0	0				
7	0	0	0		0			
6	0	0		0		0		
5	0		0		0		0	
4		0		0		0		0
3			0		0		0	0
2				0		0	0	0
1					0	0	0	0
	1	2	3	4	5	6	7	8

WEFT THREADS USED:

We used the same yarn in the weft, only we did change two of the colors in the weft, and used in all 4 colors. Two of these were the same as was used in the warp, and two of these were the new colors in this yarn. The colors we used were:

- X - Light Avocado, #160
- C - Dark Grey, #104
- D - Teal Turquoise, #146
- E - Light Maize, #108

REED USED:

A 10 dent reed was used, and it was sleyed one end per dent, or 10 threads per inch.

LENGTH OF WARP:

We did a warp, a few inches short of 9 yards long, and it was 42" wide. We did this length of warp, as we find that the skeins in this yarn are from 35½ to 37 yards in length. By doing it this length, we found that there was no waste, and no piece of any of the skeins left, over 18" in length.

TREADLING SEQUENCE:

- A. Treadle 1,2,3,4,5,6,7,8 - Lt Maize
 - B. Treadle 1,2,3,4,5,6,7,8 - Drk Gray
 - C. Treadle 1,2,3,4,5,6,7,8 - Teal Turq
 - D. Treadle 1,2,3,4,5,6,7,8 - Lt Avocado
- There are 32 shots in one complete pattern repeat. And then, you repeat over and over as desired.

COST OF THE THREADS USED:

This beautiful English worsted yarn comes in about 3½ oz. skeins, and it is \$5.40 per lb., or \$1.20 per skein, if less than 1 lb. is purchased. We find that it has about 550 yards per pound, and that 5 skeins will make about 1 lb. and 1 oz. in weight.

COST OF THE FABRIC:

In our 9 yard warp, 42" wide, we used 1 lb. 6 oz. of the Light Maize and Frost Grey, and we used 1 lb. 4 oz. of each of the Blue Turquoise and Light Avocado. So, we used 5 lbs. 4 oz. of yarn in the 9 yard warp. So our total warp cost was \$28.35, or the cost per yard was \$3.15.

In the weft, we used 1 lb. 5 oz. of 2 of the colors, and 1 lb. 7 oz. of the other two colors. Thus, in the weft, we used 5 lbs. 8 oz., in 8 yards of fabric. The total weft cost was \$29.70 and the cost per yard was \$3.72.

WARP COST PER YARD, 42" WIDE...\$ 3.15
 WEFT COST PER YARD..... 3.72
 FABRIC COST PER YARD.....\$ 6.87

SOURCE OF IDEA FOR THE SAMPLE

We have been seeing more and more of women's coats made in this heavier type of fabric lately, and thus our sample.

FINISHING FOR THE FABRIC:

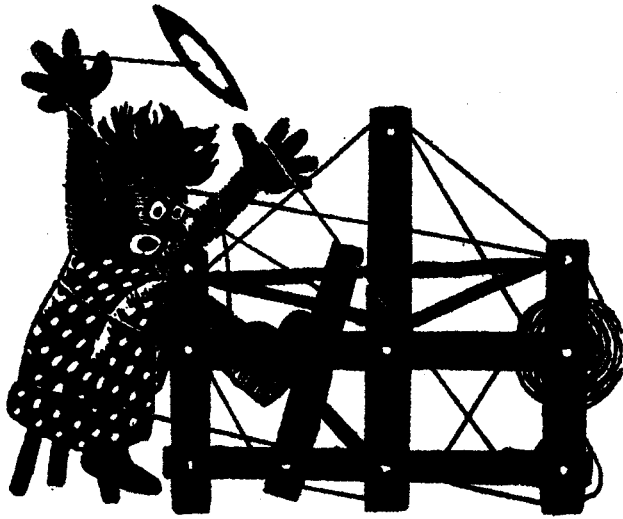
I feel that we beat this fabric a little too tightly. And also, it should be washed, allowed to drip dry, and then steam pressed. Then the pattern will show out to greater advantage when this is done. OUR SAMPLE THIS MONTH HAS NOT BEEN PROCESSED AT ALL.

MORE ABOUT THE FABRIC:

We had only one problem with the weaving of this fabric, and that was in the selvage. We tried a 1,8,2,5 selvage but found that this still did not work perfectly, so suggest that you do bring the shuttle over or under the outside thread whichever the case may be, and then throw it through the shed, and this will eliminate most selvage problems. It does slow down the weaving somewhat, but it depends upon how close to the selvage edge you will cut as to how careful you will be with the selvage.

This fabric would also be better I feel set at perhaps 9 threads per inch instead of 10 per inch as we have it.

Use a light even beat in this fabric.



drafts and designs

a guide for 5 to 12 harness weaves

Volume 13, Number 6, February, 1971

SPRING BLUE

An interesting 6 harness, warp face pattern in a light weight fabric. Can be used for dresses, blouses, or if you wish, it can be used for mattress ticking.

KEY TO COLORS USED IN THE WARP

- X - 20/2 Natural Egy. Cotton
- A - 20/2 Azure Blue Cotton
- B - 20/2 Black Egy. Cotton
- C - 20/2 Canton Green Cotton

WARP: The warp thread was a 20/2 Egyptian cotton in four different colors.

- X - 20/2 Natural Egyptian Cotton
- A - 20/2 Azure Blue Egyptian Cotton
- B - 20/2 Black Egyptian Cotton
- C - 20/2 Canton Green Egyptian Cotton

WEFT: Just one thread was used in the weft, and it was the 20/2 natural in the Egyptian Cotton.

WIDTH ON THE LOOM

Our warp was set-up 40" wide on the loom and when woven, it was about 38" wide when it came off the loom.

THREADING DRAFT:

6		C C				A A
5		C C				A A
4		C C				A A
3		C C C				A A A
2	X A A A X X X X X B		B X X X X X C C C X X X X X B			B X X X X X X
1	A A A A X X X X X B		B X X X X X C C C C X X X X X B			B X X X X X X



LENGTH OF WARP AND FABRIC OBTAINED

Our warp length was 8 yards long, and from this length of warp, we received 6-2/3 yards of finished fabric.

DRAFTS AND DESIGNS

Published monthly (except July and August) by Robin & Russ Handweavers, 533 N. Adams St., McMinnville, Oregon.

SUBSCRIPTIONS: \$5.00 per year. Back issues or single copies, 50¢ each. Yearly subscriptions start with the September issue. If you subscribe after September, back issues from then on will be mailed to you, unless you specify that you want your subscription to start with the next September issue.

VOLUME 13, Number 6, February, 1971

TIE-UP DRAFT

6		0	0		0	
5			0	0		0
4	0			0	0	
3	0	0				0
2	0		0		0	
1		0		0		0
	1	2	3	4	A	B
				5	6	

REED USED:

An 18 dent reed was used, and it was double sleyed, 2 ends per dent, or 36 threads per inch. Also, you could use a 12 dent reed, and sley it with 3 ends per dent if you wished. This might result in a slight ribbed effect, but it should press out after washed and then pressed.

TREADLING SEQUENCE:

There are 8 threads in each complete pattern repeat, as you repeat it over and over. Actually, when you repeat the pattern over and over, you start with #1, which is needed to balance the pattern, so there are 9 threads in one complete pattern. However, when you give the treadling, you eliminate one of these, or you would have two of the #1's, together.

Treadle: 1,2,3,4,1,4,3,2 and repeat over and over as desired.

COST OF THE THREADS USED:

The 20/2 Egyptian cotton costs \$6.50 per pound now, or \$3.25 per 1/2 lb tube. It has 8,400 yards per pound, and one lb. using it set at 36 threads per inch, 40" wide, is enough for a 5 1/2 yard warp. The natural, white and colors are all the same price. This thread is both mercerized and gassed, and as a result is an extremely nice quality thread.

COST OF THE FABRIC:

In the warp, we used 11 oz. of the natural, 2 ounces of the black, and 4 1/2 oz. of each of the Azure Blue and the Canton Green. Thus, we used 22 ounces or 1 pound and 6 ounces of thread in our 8 yard warp. The total cost of this was \$8.96 or the cost per yard was \$1.12.

In the weft, we used 14 ounces of the natural in the 6-2/3 yards of weft. Thus our total weft cost was \$5.68 or the cost per yard was 90¢ per yard.

WARP COST PER YARD, 40" WIDE..... \$1.12
WEFT COST PER YARD,..... .90
FABRIC COST PER YARD.....\$2.02

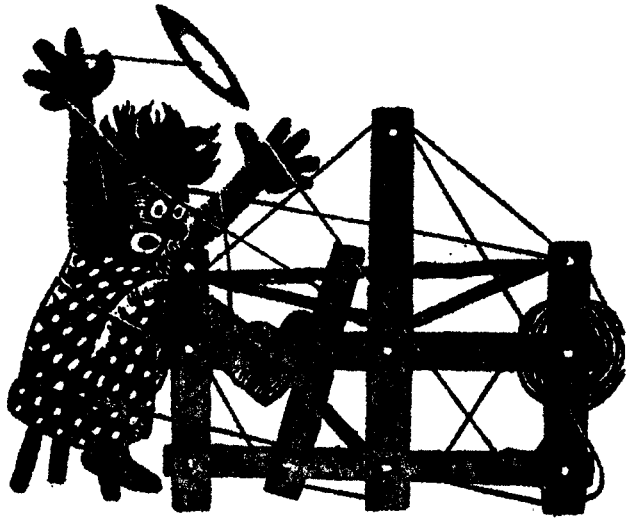
MORE ABOUT THE FABRIC:

One major problem results in the weaving of this fabric. It is the Azure Blue and the Canton Green in the pattern which is threaded on harnesses 3,4,5 and 6. This thread gradually does loosen as you weave, so the solution is to raise harnesses 3,4,5 and 6 by hand, and put a stick in the warp, back of the harnesses and pick up only these raised threads. Then, pull the stick back over the back beam, and down to the warp beam, and then put a weight on each end. This then tightens the slack threads, and makes for much, much easier weaving. In the 8 yard warp, or the 6-2/3 yards of finished fabric, we had from 5 1/2 to 6" of slack in these threads on harnesses 3,4,5 and 6, so you can see that it is essential that you do put such a stick in, in order to weave the fabric properly.

You note that we had an 8 yard warp, and received 6-2/3 yards of finished fabric. It was because of the slack in these warp threads on 3,4,5 and 6 that we did not receive more fabric from the 8 yard warp.

There are no other problems, and this is a relatively simple and easy fabric to weave.

Use a firm, even, double beat, beating before you change the treadle and then after you change to the next treadle. And, my suggestion is that you wash the fabric in luke-warm water, allow it to drip dry and then steam press, before you make up any of it into garments.



drafts and designs

a guide for 5 to 12 harness weaves

VOLUME 13, Number 7. March, 1971.

GREEN FIRE:

This is an interesting combination of yarns in an 8 harness M's and O's.

WARP:

We have used two different threads in the warp in this sample:

X--20/2 Sage Egyptian Cotton

O--5/2 Aqua Green Swiss Viscose

WEFT:

There is one thread used in the weft, and it is size 20/2 Egyptian Cotton in a color called Parakeet.

REED USED:

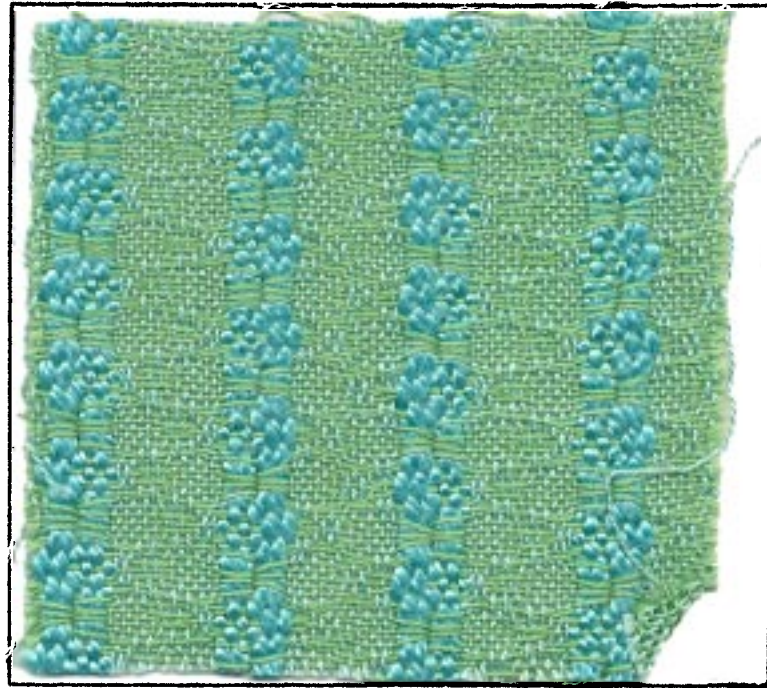
A 12 dent reed was used, and it was double sleyed, 2 ends per dent, or 24 threads per inch.

WIDTH IN REED:

Our warp was set up 40" wide on the loom, and when it was woven and came off the loom it was 37½" wide. It is because of the combination of fine and heavy threads, that this fabric weaves a little narrower than usual.

THREADING DRAFT:

8	X X	O O	X X
7	X X	O O	X X
6	X X	O O	X X
5	X X	O O	X X
4		X X	O O X X
3		X X	O O X X
2		X X	O O X X
1		X X	O O X X



TIE-UP DRAFT:

8			X	X		X		X
7		X	X		X		X	
6	X	X				X		X
5	X			X	X		X	
4		X		X	X			X
3	X		X				X	X
2		X		X		X	X	
1	X		X		X	X		

DRAFTS AND DESIGNS

Published monthly (except July and August) by Robin & Russ Handweavers, 533 N. Adams St., McMinnville, Oregon.

SUBSCRIPTIONS: \$5.00 per year. Back issues or single copies, 50¢ each. Yearly subscriptions start with the September issue. If you subscribe after September, back issues from then on will be mailed to you, unless you specify that you want your subscription to start with the next September issue.

VOLUME 13, Number 7. March, 1971

TREADLING SEQUENCE:

There are 14 threads on each pattern sequence, and the sequence is as follows:

1. Treadle #1, 20/2 Parakeet
2. Treadle #2, 20/2 Parakeet
3. Treadle #3, 20/2 Parakeet
4. Treadle #4, 20/2 Parakeet
5. Treadle #3, 20/2 Parakeet
6. Treadle #2, 20/2 Parakeet
7. Treadle #1, 20/2 Parakeet
8. Treadle #8, 20/2 Parakeet
9. Treadle #7, 20/2 Parakeet
10. Treadle #6, 20/2 Parakeet
11. Treadle #5, 20/2 Parakeet.
12. Treadle #6, 20/2 Parakeet
13. Treadle #7, 20/2 Parakeet
14. Treadle #8, 20/2 Parakeet

End of one complete pattern repeat.
Repeat over and over as desired.

COST OF THREADS USED:

The 20/2 Egyptian Cotton in size 20/2 was a Sage color that was used in the warp and a Parakeet color that was used in the weft. It has 8400 yards per pound, comes on 1/2 pound cones. It is \$6.50 per pound, or \$3.25 per 1/2 lb. cone of 4200 yards.

The other thread used was one of the new spun viscose threads we are now importing from Switzerland. It has about 1240 yards per pound, and it comes on approximately 1 pound tubes. The price is \$3.50 per lb.

COST OF THE FABRIC:

We had an 8 yard warp, 40" wide, set at 24 threads per inch. In the 8½ yard warp, we used 10½ ounces of the 20/2 Sage Egyptian Cotton. We also used 2 lbs. 7 oz. of the spun viscose, Wild Sage, in the warp. Thus, our warp cost for 8 yards was \$12.74, or the cost per yard was \$1.60 per

yard. In the weft, it took one pound of 20/2 Parakeet to weave the seven yards of finished fabric. It took exactly one pound in the 7 yards, so the weft cost per yard was \$6.50 or the cost per yard was 93¢ per yard.

WARP COST PER YARD, 40" WIDE -	\$ 1.60
WEFT COST PER YARD-----	.93
FABRIC COST PER YARD-----	\$ 2.53

MORE ABOUT THIS FABRIC:

This fabric was quite easy to weave, and presented no problems in the weaving.

I had been thinking that the difference in the weight of the two threads used in the warp might create a problem of tension. However, such was not the case, and we had both threads have the same take-up. However, you should use a light, even, firm, double beat; beating once with the shed open, changing to the next shed, and beating again, before you throw the shuttle.

We thought that the fabric might be more interesting, if we used an 8 dent reed, and had 3 ends per dent, but we found that this made more of a rib in the weft than we anticipated, so thus, we changed to the 12 dent reed.

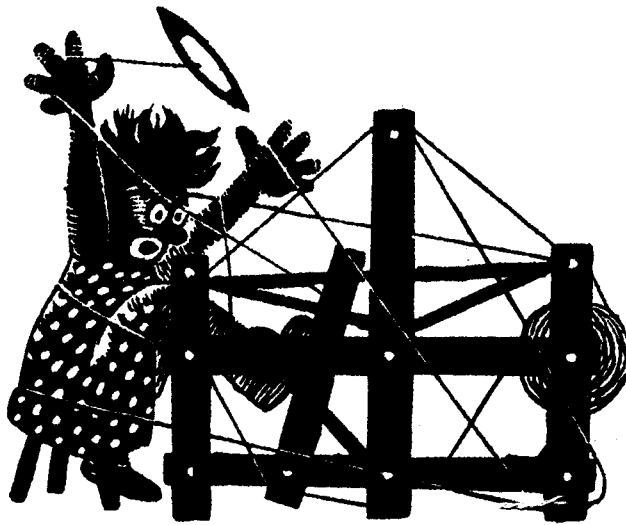
You should wash and press this fabric before you use it, and we felt that it had very nice draping quality, and would be excellent for drapes or curtains where you want the light to come in, but where you did not want persons outside to be able to see through this fabric.

BOOKS BOOKS BOOKS BOOKS

Here is a partial list of some of the new and interesting books now in stock and available for immediate shipment.

1. THE ART OF WEAVING, Regensteiner \$13.50
2. CREATIVE COLOR, Faber Birren \$15.00
3. HANDSPINNING, Art & Technique \$12.50
4. STEP BY STEP MACRAME, Phillips \$2.50
5. THE NEW AMERICAN TAPESTRY \$13.50
6. CARDWEAVING, by R. Groff \$3.50
7. VEGETABLE DYEING, Lesch \$7.95
8. MACRAME, CREATIVE DESIGN IN KNOTTING \$7.95
9. MACRAME, CREATIVE KNOTTING \$2.95
10. WEAVES AND PATTERN DRAFTING \$7.95

Postage and insurance is extra. Add 30¢ postage and insurance for the first book, and 15¢ each additional book.



drafts and designs

a guide for 5 to 12 harness weaves

VOLUME 13, Number 8 - APRIL, 1971

MARIGOLD NUGGETS:

This is a pleasing 8 harness fabric that is soft and pleasing to the touch, and which reminds one of a bed of Marigolds.

WARP:

We used three different threads in the warp, and two of them were our 2/18's worsted made for us in England. The third thread was a natural, smooth, 2 ply mohair yarn, which is fairly heavy and has about 1200 yards per lb.

- X--Sunkist Orange 2/18's Worsted
- O--Princeton Orange 2/18's Worsted
- A--Natural, 2 ply, smooth mohair

WEFT:

Two most interesting yarns were used in the weft. One is a new yarn, which is a 2 ply yarn and is a combination yarn of Lambs wool, Angora and Nylon and it is in a Marigold Orange color.

The other weft thread was one of the variegated orange, brushed mohair yarns which we have imported from Holland, and which has 1,000 yards per lb.



KEY TO THREADS IN THE WARP:

- X--Sunkist Orange 2/18's Worsted
- O--Princeton Orange 2/18's Worsted
- A--Natural 2 ply, smooth mohair

THREADING DRAFT:

8		0	0		0		0
7		0			0		0
6				X		0	0
5				X	X		0
4	A			X		X	
3	A			X		X	
2		0		0			
1		0		0			

DRAFTS AND DESIGNS

Published monthly (except July and August) by Robin & Russ Handweavers, 533 N. Adams St., McMinnville, Oregon.

SUBSCRIPTIONS: \$5.00 per year. Back issues or single copies, 50¢ each. Yearly subscriptions start with the September issue. If you subscribe after September, back issues from then on will be mailed to you, unless you specify that you want your subscription to start with the next September issue.

VOLUME 13, NUMBER 8 - APRIL, 1971

REED USED:

A 15 dent reed was used, and it was double sleyed, 2 ends per dent, or 30 threads per inch.

WIDTH IN REED:

The fabric was set-up, 40" wide in the reed, and wove down to about 38" in width when finished, and taken off the loom.

TREADLING SEQUENCE:

There are 30 shots in each treadling sequence, and the first 28 are the soft Marigold Orange, Angora and Nylon. Then the last 2 shots, on treadles # 3 and # 4 are the brushed mohair in the variegated orange color. I will give you the short method of writing the treadling in this instance, as there is just one shot on each of the treadles in the sequence given here.

Treadle: 1,2,3,4,3,2,1,8,7,6,5,6,7,8,3,4,5,6,5,4,3,2,1,8,7,8,1,2,3,4. End of one complete pattern repeat. Repeat over and over as desired. Note the last two treadles given are under-lined, and these 2 are the ones that are the brushed mohair in the variegated Orange.

TIE-UP DRAFT:

8			0		0	0	0	0
7				0	0	0	0	
6			0	0	0	0		
5	0	0	0	0	0		0	
4	0	0	0	0	0			
3	0	0	0					0
2	0	0					0	0
1	0					0	0	0
	1	2	3	4	5	6	7	8

MORE ABOUT THE FABRIC:

I must tell you that we had one large major problem in the weaving of this fabric, and it was the 2 threads of the

natural, smooth, 2 ply mohair in the warp. As most mohair yarns tend to do, this one fuzzed quite a bit in the warp, and as a result, fuzz balls formed on these two threads quite often. To help avoid this as much as possible, one must beat with the shed open, change to the next sleyed, and beat lightly again. Never, and I repeat never beat with the shed closed on this particular fabric.

I had considered using the brushed mohair in place of the natural, 2 ply, smooth mohair, but I am so glad that we did not try it because, we would never have had an open shed. However, I do feel that the fabric might have been enhanced if we had used perhaps a 2/18's worsted doubled instead of the natural mohair and had it in a rusty brown or other color that would have blended in with the other colors.

It took hours and hours more time to weave this because we did use the natural 2 ply mohair in the warp.

One more thing that I must mention is that our sample has not been washed and pressed. I think it would have been much nicer if it had been pressed and also washed. I would suggest washing it in luke-warm water, allowing it to drip dry, and then steam press it, and a certain amount of the waviness will then have been taken out of the fabric.

COST OF THE FABRIC:

We had an 8 yard warp, 40" wide, and it took 15 oz. of each of the two colors in 2/18's worsted, and it took 9 oz. of the natural brushed mohair. Thus, the total weft cost for 8 yards was \$15.00, or the cost per yard for the warp was \$1.88.

In the weft, we had used about 1 lb. and 14 oz. of the Lambs Wool, Angora, and Nylon combination, and 7 oz. of the brushed mohair from Holland. Thus, our total weft cost for 7 yards of fabric was \$10.48. However, because of the nature of the threads used, and the characteristics of this weave, the fabric tends to come together giving a sort of seer-sucker effect, so really, you should not plan on more than 6½ yards of fabric from an 8 yard warp after it is off the loom. So, we will break the weft cost down to 6½ yards.

Thus, the cost per yard for the weft was \$1.62 per yard.

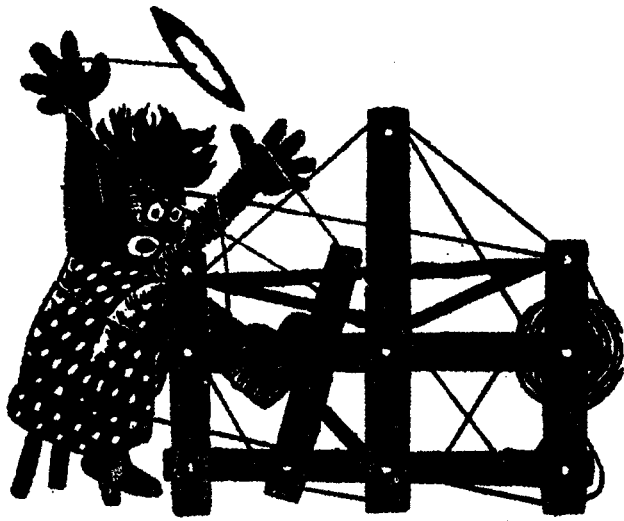
WARP COST PER YARD-----	\$ 1.88
WEFT COST PER YARD-----	1.62
<u>FABRIC COST PER YARD-----</u>	<u>\$ 3.50</u>

ERROR---ERROR---ERROR---ERROR

We have just discovered that the wrong tie-up was given in the April, 1971 issue, with the sample entitled Marigold Nuggetts. Here is the correct tie-up, and between our shop and the mimeographers, we managed to make this error.

CORRECT TIE-UP DRAFT FOR APRIL, 1971.

8					0	0	0	0
7				0	0	0	0	
6		0	0	0	0	0		
5	0		0	0	0			
4		0	0	0	0			
3	0	0	0					0
2	0	0					0	0
1	0					0	0	0
	1	2	3	4	5	6	7	8



drafts and designs

a guide for 5 to 12 harness weaves

VOLUME 13, Number 9, May, 1971.

TANGLED TRAILS:

An interesting 8 harness weave that could be used for suiting, coat material, and other clothing fabrics.

THREADING DRAFT:

8	X		X	
7		X		X
6		B		O
5			B	
4				O
3			B	
2			X	X
1			X	X

KEY TO THREADS IN THE WARP:

- X--natural homespun type wool
- O--heather peach and pumpkin tweed
- B--yellow gold lambs wool, angora & nylon

WARP:

There are three different threads used in the warp. They are as follows:

- X--a natural homespun type wool yarn in a single ply.
- O--a heather peach and pumpkin tweed yarn which is creslan and wool.
- B--a beautiful soft yarn, which is a combination of lambs wool, angora, and nylon.

WEFT:

The same three threads that were used in the warp were also used in the weft.

REED USED:

A 10 dent reed was used, and it was double sleyed, 2 ends per dent, or 20 threads per inch.



WIDTH IN LOOM:

Our fabric was set up 42" wide in the loom and even with the weaving, came down to only about 40" width.

FINISHING OF FABRIC:

Our fabric was washed in the shortest cycle of our automatic washing machine, and then the water was extracted. Then, it was steamed pressed and this fabric is the result.

DRAFTS AND DESIGNS

Published monthly (except July and August) by Robin & Russ Handweavers, 533 N. Adams St., McMinnville, Oregon.

SUBSCRIPTIONS: \$4.00 per year. Back issues or single copies, 50¢ each. Yearly subscriptions start with the September issue. If you subscribe after September, back issues from then on will be mailed to you, unless you specify that you want your subscription to start with the next September issue.

VOLUME 13, Number 9. May, 1971

TREADLING SEQUENCE:

1. Treadle # 1, Natural homespun
2. Treadle # 2, Natural homespun
3. Treadle # 3, Pink & Pumpkin
4. Treadle # 4, Pink & Pumpkin
5. Treadle # 5, Pink & Pumpkin
6. Treadle # 6, Pink & Pumpkin
7. Treadle # 7, Natural homespun
8. Treadle # 8, Natural homespun
9. Treadle # 1, Natural homespun
10. Treadle # 2, Natural homespun
11. Treadle # 3, Lambs wool, yellow gold
12. Treadle # 4, Lambs wool, yellow gold
13. Treadle # 5, Lambs wool, yellow gold
14. Treadle # 6, Lambs wool, yellow gold
15. Treadle # 7, Natural homespun
16. Treadle # 8, Natural homespun

END OF ONE COMPLETE PATTERN REPEAT.

Repeat over and over as desired.

COST OF THE THREADS USED:

The natural homespun type wool yarn is one which we purchased 50 lbs. of and found that it was good for either warp or weft. It has about 1800 yards per lb., and is \$4.00 per lb. It does come in skeins of about 1 lb. each.

The heather grey with pink and pumpkin is a creslan and wool combination. It has about 1800 yards per lb. also, and is \$3.20 per lb. We do not have much of this one left.

The yellow gold yarn is a combination of lambs wool, angora, and nylon. It is wonderfully soft, and should work well for many clothing fabrics. I think it could be knitted as well as used in weaving. It has 3600 yds. per lb., and comes on about 2 to 3 lb. tubes. We can wind off 1/2 lb. tubes for you and it is \$4.00 per lb., a 1/2 lb. tube would be \$2.00.

COST OF THE FABRIC:

We had an 8 yard warp, 42" wide, and in this warp, it took 1 lb. 10 oz. of the natural homespun type yarn, 11 oz. of the heather pink and pumpkin yarn, and 8 oz. of the yellow gold lambs wool, nylon and angora yarn. Thus, our total warp cost was \$10.70 for the 8 yards of warp, or the ~~cost~~ per yd. was \$1.34.

From this 8 yard warp, we had 7 yards of finished fabric. In this 7 yards, it took 1 lb. 7 oz. of the natural homespun type yarn, 10 oz. of the pink and pumpkin creslan and wool, and 6 1/2 oz. of the lambs wool, angora and nylon in yellow gold. Thus, our total weft cost for 7 yards of fabric was \$1.34 per yard. Thus, the fabric cost per yard was \$2.68.

WARP COST PER YARD, 42" wide-----\$1.34

WEFT COST PER YARD ----- 1.34

FABRIC COST PER YARD ----- \$2.68

TIE-UP DRAFT:

8			0	0		0		0
7	0		0				0	0
6		0		0	0	0		
5	0	0			0		0	
4		0		0			0	0
3			0	0	0		0	
2	0	0				0		0
1	0		0		0	0		
	1	2	3	4	5	6	7	8

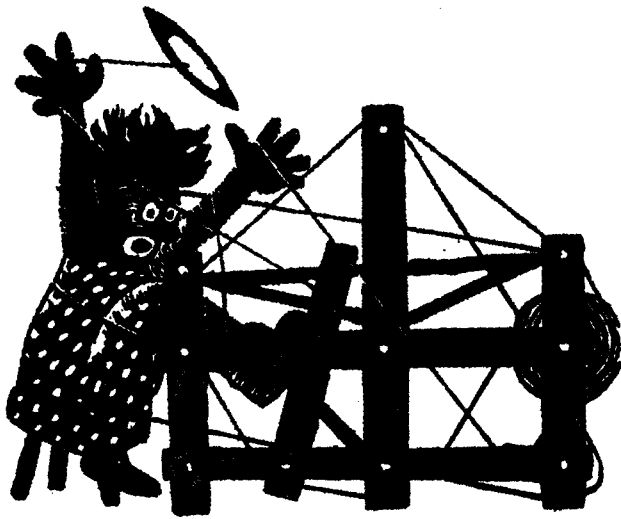
MORE ABOUT THIS FABRIC:

We had only one minor problem in the weaving of this fabric. The yarns are a little fragile as they are single ply in the natural homespun and also the yellow gold lambs wool, angora and nylon broke a couple of times. We had a few broken threads, but not many, and it really wasn't a major problem.

You want to use a light, even beat on this fabric, and you can use a light even, double beat if you wish, beating first with the shed open, changing to the next shed, and beating again. This will help to prevent any clinging together of threads, and thus, make it easier to weave.

Other than this, it is easy to weave, and easy to thread, so it should present no problems.

After it is woven, it feels a little harsh and this I'm sure is from the homespun type yarn. However, the washing and pressing did eliminate a lot of this. And, if you did wish to do so, after you have washed and pressed this fabric, if you wanted to have it have more nap, I'm sure that you could brush it with a hair brush, and get it to nap a little more. You can see from the sample, if you examine it closely, that it already has a slight nap after being washed and pressed, which I feel, is quite appealing.



drafts and designs

a guide for 5 to 12 harness weaves

VOLUME 13, Number 10. June, 1971.

CONTEMPORARY MAGIC

This interesting 6 harness contemporary pattern has been modernized by the use of interesting contemporary colors, and we hope that you will enjoy it.

WARP:

Our warp was 20/2 Egyptian Cotton, in a color called of all things "Green."

WEFT:

In the weft, we used 4 threads. Three of them are the 2/18's worsteds we import from England. These 3 were all doubled on the bobbin, 2 ends on a bobbin to act as one thread. The colors were Light Yellow, Khaki Drab, and Dark Avocado in the 2/18's worsted.

And for a tabby thread, we used a 20/2 egyptian cotton in a color called -- "Avocado."

REED USED:

A 16 dent reed was used, and it was double sleyed, 2 ends per dent, or 32 threads per inch.

WIDTH IN REED:

Our fabric in the reed was 40" wide, with a total of 1280 warp ends.

TIE-UP DRAFT:

6		0			0		0		0	
5		0				0	0		0	
4		0				0		0	0	
3		0				0		0		0
2	0			0						
1	0		0							
	1	2	3	4	5	6	7	8	9	10

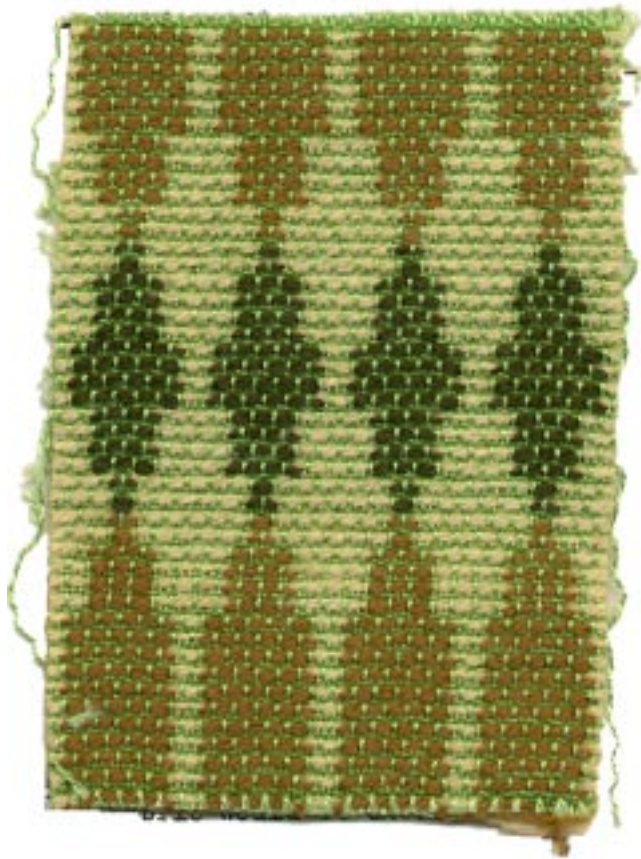
Sample on next page

MORE ABOUT THIS FABRIC:

This fabric would be excellent for bed-spreads, upholstery, and drapery. The float is short and tied together very well, so it is practical for such uses.

Use a firm, even, double beat.

We have tied this up, so the tabby and the tie-down treadles are with the left foot, and the pattern treadles are done with the right foot. If you start all your shuttles on the right, then tie-down # 4 would be used. And, when your shuttles are on the left, you would use tie-down # 3. This is for the pattern



DRAFTS AND DESIGNS

Published monthly (except July and August) by Robin & Russ Handweavers, 533 N. Adams St., McMinnville, Oregon.

SUBSCRIPTIONS: \$4.00 per year. Back issues or single copies, 50¢ each. Yearly subscriptions start with the September issue. If you subscribe after September, back issues from then on will be mailed to you, unless you specify that you want your subscription to start with the next September issue.

VOLUME 13, Number 10. June 1971

THREADING DRAFT:

6				X	X	X							X	X	X
5	X	X			X	X		X	X				X	X	
4		X	X		X	X			X	X		X	X		
3			X	X						X	X				
2	X	X	X	X	X	X	X	X	X	X	X	X	X	X	X
1	X	X	X	X	X	X	X	X	X	X	X	X	X	X	X

shuttles only.

Your most likely mistake in the weaving will be stepping on the wrong tie-down. We know, because we did it.

COST OF THREADS USED:

The 20/2 green and avocado egyptian cotton is \$6.50 per lb., and comes on 1/2 lb. tubes. It has 8400 yards per lb.

The 2/18's worsted in the Dark Avocado, Light Yellow, and Khaki Drab comes on about 1/2 lb. cones. It has 4800 yards per pound, and is \$6.80 per lb.

YARDAGE COMPLETED:

We had a 9 yard warp, 40" wide, and from this, we had about 7 1/2 yards of finished fabric.

COST OF FABRIC:

In the warp, we used 1 lb. 14 1/2 oz. of green, 20/2 Egy. Cotton at \$6.50 per lb. so 9 yard warp cost was \$12.40 or the cost per yard was \$1.38.

In the weft, we used 1 lb. 2 1/2 oz. Light Yellow, 10 1/2 oz. Khaki Drab, and 7 oz. of Dark Avocado Worsted. Total 2 lbs. 4 oz. in all in 7 1/2 yards of finished fabric. We also used 12 oz. Avocado 20/2 Egyptian Cotton, so the total weft cost was \$20.17, or the cost per yard was \$2.68 per yard.

WARP COST PER YARD, 40" Wide-----\$1.38
WEFT COST PER YARD ----- 2.68

FABRIC COST PER YARD-----\$4.06

TREADLING SEQUENCE:

Please note that the pattern is not as difficult as the treadling sequence makes it look. The main reason for the long treadling sequence is because of the change of colors. If we used say just 2 colors, then the treadling sequence would be much shorter. Also, please note that you have to step on 2 treadles at one time in some cases in the treadling sequence.

PLEASE NOTE IN THE TREADLING THAT THERE ARE 3 Major Units of Treadling. However, there is a change of color in these units so please follow the sequence we have given.

1st Unit

1. Treadle 4 & 10, Lt. Yellow Worsted
 2. Treadle 4 & 9, Dk. Avocado Worsted
 3. Treadle 2---- Avocado 20/2 Cotton
 4. Treadle 1---- Avocado 20/2 Cotton
 5. Treadle 3 & 10, Lt. Yellow Worsted
 6. Treadle 3 & 9, Dk. Avocado Worsted
 7. Treadle 2---- Avocado 20/2 Cotton
 8. Treadle 1---- Avocado 20/2 Cotton
 9. Treadle 4 & 10, Lt. Yellow Worsted
 10. Treadle 4 & 9, Khaki Drab Worsted
 11. Treadle 2---- Avocado 20/2 Cotton
 12. Treadle 1---- Avocado 20/2 Cotton
 13. Treadle 3 & 10, Lt. Yellow Worsted
 14. Treadle 3 & 9, Khaki Drab Worsted
 15. Treadle 2---- Avocado 20/2 Cotton
 16. Treadle 1---- Avocado 20/2 Cotton
- End of 1st Unit--Do just once, 16 thds.

2nd Unit

1. Treadle 4 & 8, Lt. Yellow Worsted
 2. Treadle 4 & 7, Khaki Drab Worsted
 3. Treadle 2---- Avocado 20/2 Cotton
 4. Treadle 1---- Avocado 20/2 Cotton
 5. Treadle 3 & 8, Lt. Yellow Worsted
 6. Treadle 3 & 7, Khaki Drab Worsted
 7. Treadle 2---- Avocado 20/2 Cotton
 8. Treadle 1---- Avocado 20/2 Cotton
- End of 2nd Unit---Repeat two times, or 16 threads in all.

JUNE THREADING DRAFT

6						X X X						X X X
5	X X			X X			X X					X X
4		X X		X X				X X			X X	
3			X X						X X			
2	X	X	X	X	X	X	X	X	X	X	X	X
1	X	X	X	X	X	X	X	X	X	X	X	X

In the June issue of drafts & designs, the threading draft was printed incorrectly. The above draft is correct and should be clipped to your copy for future reference. Our apologies and we hope this has not inconvenienced you.

3rd Unit

1. Treadle 4 & 6, Lt. Yellow Worsted
2. Treadle 4 & 5, Khaki Drab Worsted
3. Treadle 2---- Avocado 20/2 Cotton
4. Treadle 1---- Avocado 20/2 Cotton
5. Treadle 3 & 6, Lt. Yellow Worsted
6. Treadle 3 & 5, Khaki Drab Worsted
7. Treadle 2---- Avocado 20/2 Cotton
8. Treadle 1---- Avocado 20/2 Cotton

End of 3rd Unit---Repeat eight times, or 64 threads in all.

2nd Unit

Repeat 2nd unit two times, or 16 threads, using same colors as previously.

1st Unit---However--COLORS ARE REVERSED

1. Treadle 4 & 10, Lt. Yellow Worsted
2. Treadle 4 & 9, Khaki Drab Worsted
3. Treadle 2---- Avocado 20/2 Cotton
4. Treadle 1---- Avocado 20/2 Cotton
5. Treadle 3 & 10, Lt. Yellow Worsted
6. Treadle 3 & 9, Khaki Drab Worsted
7. Treadle 2---- 20/2 Avocado Cotton
8. Treadle 1---- 20/2 Avocado Cotton
9. Treadle 4 & 10, Lt. Yellow Worsted
10. Treadle 4 & 9, Dk. Avocado Worsted
11. Treadle 2---- 20/2 Avocado Cotton
12. Treadle 1---- 20/2 Avocado Cotton
13. Treadle 3 & 10, Lt. Yellow Worsted
14. Treadle 3 & 9, Dk. Avocado Worsted
15. Treadle 2---- 20/2 Avocado Cotton
16. Treadle 1---- 20/2 Avocado Cotton

End of First Unit--Do just once.

2nd Unit--with change of colors

1. Treadle 4 & 8, Lt. Yellow Worsted
2. Treadle 4 & 7, Dk. Avocado Worsted
3. Treadle 2---- 20/2 Avocado Cotton
4. Treadle 1---- 20/2 Avocado Cotton
5. Treadle 3 & 8, Lt. Yellow Worsted
6. Treadle 3 & 7, Dk. Avocado Worsted
7. Treadle 2---- 20/2 Avocado Cotton
8. Treadle 1---- 20/2 Avocado Cotton

End of 2nd Unit---Repeat 2 times or 16 thds.

3rd Unit--with change of colors

1. Treadle 4 & 6, Lt. Yellow Worsted
2. Treadle 4 & 5, Dk. Avocado Worsted
3. Treadle 2---- 20/2 Avocado Cotton
4. Treadle 1---- 20/2 Avocado Cotton
5. Treadle 3 & 6, Lt. Yellow Worsted
6. Treadle 3 & 5, Dk. Avocado Worsted
7. Treadle 2---- 20/2 Avocado Cotton
8. Treadle 1---- 20/2 Avocado Cotton

End of 3rd Unit--Repeat 2 times or 16 thds.

2nd Unit--do 2 times with Dark Avocado and for a total of 16 threads.

End of one complete repeat. Start over at beginning again.

NOTE:

There are 176 threads in one complete pattern repeat.

NOTE:

You do this sequence of the 1,2,3, units.

- Unit # 1. 16 threads
- Unit # 2. 16 threads
- Unit # 3. 64 threads
- Unit # 2. 16 threads
- Unit # 1. 16 threads
- Unit # 2. 16 threads
- Unit # 3. 16 threads
- Unit # 2. 16 threads

END OF ONE COMPLETE REPEAT. REPEAT OVER AND OVER AS DESIRED.

ERROR---ERROR---ERROR---ERROR

We have just discovered that the wrong tie-up was given in the April, 1971 issue, with the sample entitled Marigold Nuggets. Here is the correct tie-up, and between our shop and the mimeographers, we managed to make this error.

CORRECT TIE-UP DRAFT FOR APRIL, 1971.

8					0	0	0	0
7				0	0	0	0	
6		0	0	0	0	0		
5	0		0	0	0			
4		0	0	0	0			
3	0	0	0					0
2	0	0					0	0
1	0					0	0	0
	1	2	3	4	5	6	7	8