



# drafts and designs

*a guide for 5 to 12 harness weaves*

VOLUME 14, Number 1, September, 1971

## THE GREEK KEY

This interesting 8 harness summer and winter weave was a project started about two years ago, and finally worked out and completed this summer. Hope you like it.

### WARP:

Our warp is a 20/2 Egyptian Cotton in a color called Old Gold.

### WEFT:

There are two threads used in the weft. One is a tabby thread, and in this we used another egyptian cotton, color is called Spring Green.

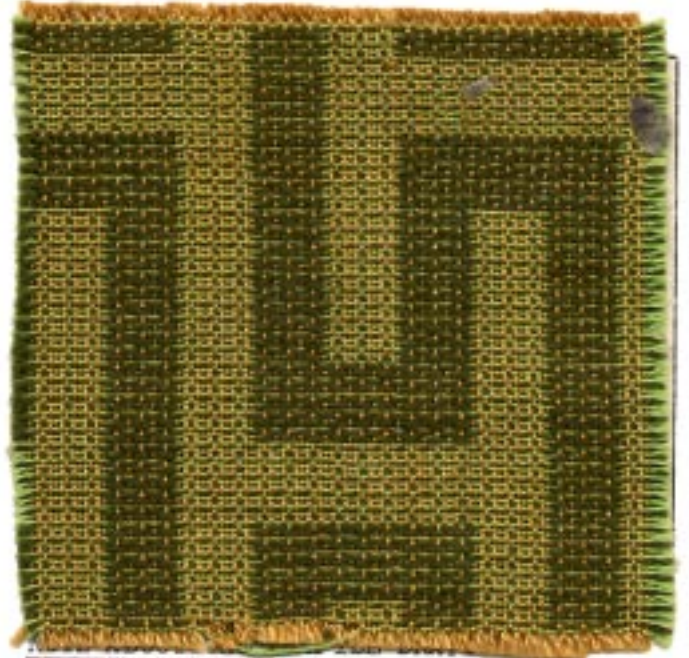
The pattern thread is our English 2/18's worsted in our color #2, Dark Avocado.

### REED USED:

A 15 dent reed was used, and it was double sleyed, 2 ends per dent, or 30 threads per inch.

## SUMMER AND WINTER PROFILE DRAFT

8				0	0	0
7	0	0	0			
6		0	0	0		
5			0	0	0	
4				0	0	0
3					0	0
2						
1						



### NOTE ABOUT THE PROFILE DRAFT

Please note that the profile draft is a short method of writing a longer draft. In this draft above, each 0 represents 4 threads.

On row # 3, it represents 1,3,2,3

On row # 4, it represents 1,4,2,4

On row # 5, it represents 1,5,2,5

On row # 6, it represents 1,6,2,6

On row # 7, it represents 1,7,2,7

On row # 8, it represents 1,8,2,8

From this you will see that the total number of threads in the draft is 18 x 4 or 72 threads in one complete repeat.

DRAFTS AND DESIGNS

Published monthly (except July and August) by Robin & Russ Handweavers, 533 N. Adams St., McMinnville, Oregon.

SUBSCRIPTIONS: \$4.00 per year. Back issues or single copies, 50¢ each. Yearly subscriptions start with the September issue. If you subscribe after September, back issues from then on will be mailed to you, unless you specify that you want your subscription to start with the next September issue.

VOLUME 14, Number 1, September, 1971

TREADLING SEQUENCE:

If your loom has 12 treadles, you can work out an easy treadling, using only one treadle at a time. But if it has only 12 treadles, then you must use 2 feet and 2 treadles at a time in every other shot, such as using the Y & 1 treadle, the X & 3 treadles, etc., as is indicated in treadling below.

# 1 Treadling, using 9 treadles, and using tie-up # 1.

- Treadle B--spring green cotton
- Treadle X & 1--Dark Avocado Wool
- Treadle A--spring green cotton
- Treadle Y & 1--Dark Avocado Wool

Repeat the above 4, 5 times for 20 thds.

- Treadle B--spring green cotton
- Treadle X & 2--Dark Avocado Wool
- Treadle A--spring green cotton
- Treadle Y & 2--Dark Avocado Wool

Repeat above 4, 10 times or 40 thds.

- Treadle B--spring green cotton
- Treadle X & 3--Dark Avocado wool
- Treadle A--spring green cotton
- Treadle Y & 3--Dark Avocado wool

Repeat above 4, 5 times or 20 thds.

- Treadle B--spring green cotton
- Treadle X & 4--Dark Avocado wool
- Treadle A--spring green cotton
- Treadle Y & 4--Dark Avocado wool

Repeat above 4, 5 times or 20 thds.

- Treadle B--spring green cotton
- Treadle X & 3--Dark Avocado wool
- Treadle A--spring green cotton
- Treadle Y & 3--Dark Avocado wool

Repeat above 4, 5 times or 20 thds.

- Treadle B--spring green cotton
- Treadle X & 2--Dark Avocado wool
- Treadle A--spring green cotton
- Treadle Y & 2--Dark Avocado wool

Repeat above 4, 10 times or 40 thds.

Treadle B--spring green cotton  
Treadle X & 1--Dark Avocado wool  
Treadle A--spring green cotton  
Treadle Y & 1--Dark Avocado wool  
Repeat above 4, 5 times or 20 thds.

Treadle B--spring green cotton  
Treadle X & 5--Dark Avocado wool  
Treadle A--spring green cotton  
Treadle Y & 5--Dark Avocado wool  
Repeat above 4, 5 times or 20 thds.

END OF ONE COMPLETE PATTERN REPEAT.  
REPEAT OVER AND OVER AS DESIRED.

TIE-UP # 1.

8	0			0	0	0	0	0	
7	0							0	
6	0			0	0			0	0
5	0							0	0
4	0			0	0	0	0		
3	0								0
2	0		0						
1	0	0							
	A	B	X	Y	1	2	3	4	5

TIE-UP # 2.

8		0	0	0	0	0	0	0	0	0	0	0
7	0			L				0	0			
6		0	0	0	0	0		0	0	0	0	0
5	0							0	0	0	0	0
4	0			0	0	0	0	0	0	0	0	0
3	0									0	0	
2	0			0		0		0		0		0
1	0	0		0		0		0		0		
	A	B	1	2	3	4	5	6	7	8	9	10

COST OF THREADS USED:

The egyptian cotton comes in 90 colors in size 20/2, on 1/2 lb. cones. Price \$6.50 lb.

The 2/13's worsted comes in 39 colors in 1/2 lb. cones. Price \$6.80 per lb.

COST OF FABRIC:

It took 1 lb. 4 oz. of old gold egyptian cotton for warp at \$6.50 lb. Our warp cost for 8 yards, 42" wide was \$8.12, or the cost per yard was \$1.02.

It took 14 1/2 oz. of Spring Green 20/2 Egyptian Cotton for tabby in 7 yards. It took 1 lb. 4 oz. of 2/18's Dark Avocado at \$6.80 lb. or \$8.50 was wool cost.

Total weft cost was \$14.40 or cost per yard of weft was \$2.06.

WARP COST PER YARD	---42" wide---	\$1.02
WEFT COST PER YARD	-----	\$2.06
FABRIC COST PER YARD	-----	\$3.08

TREADLING, USING TIE-UP # 2.

1. Treadle B-spring green cotton  
Treadle 1-Dark Avocado Wool  
Treadle A-spring green cotton  
Treadle 2-Dark Avocado Wool  
REPEAT THESE 4, 5 times--20 thds.
2. Treadle B--spring green cotton  
Treadle 3-Dark Avocado Wool  
Treadle A-spring green cotton  
Treadle 4-Dark Avocado Wool  
REPEAT THESE 4, 10 times--40 thds.
3. Treadle B-spring green cotton  
Treadle 5-Dark Avocado Wool  
Treadle A-spring green cotton  
Treadle 6-Dark Avocado Wool  
REPEAT THESE 4, 5 times--20 thds.
4. Treadle B-spring green cotton  
Treadle 7-Dark Avocado Wool  
Treadle A-spring green cotton  
Treadle 8-Dark Avocado Wool  
REPEAT THESE 4, 5 times--20 thds.
5. Treadle B-spring green cotton  
Treadle 5-Dark Avocado Wool  
Treadle A-spring green cotton  
Treadle 6-Dark Avocado Wool  
REPEAT THESE 4, 5 times--20 thds.
6. Treadle B-spring green cotton  
Treadle 3-Dark Avocado Wool  
Treadle A-spring green cotton  
Treadle 4-Dark Avocado Wool  
REPEAT THESE 4, 10 times--40 thds.
7. Treadle B-spring green cotton  
Treadle 1-Dark Avocado Wool  
Treadle A-spring green cotton  
Treadle 2-Dark Avocado Wool  
REPEAT THESE 4, 5 times--20 thds.
8. Treadle B-spring green cotton  
Treadle 9-Dark Avocado Wool  
Treadle A-spring green cotton  
Treadle 10-Dark Avocado Wool  
REPEAT THESE 4, 5 times--20 thds.

REPEAT OVER AND OVER FROM BEGINNING AS  
DESIRED.



# drafts and designs

## *a guide for 5 to 12 harness weaves*

VOLUME 14, Number 2.

October, 1971

### RAW WHITE AND NATURAL BLACK

This 8 harness shadow weave was planned for a car robe or travel blanket as it is called in England. It is woven with two natural colored wools. One is the natural white 2/18's worsted from England which is called Raw White, and the other is a Natural Black heavy sweater yarn from Wales.

### WARP USED:

Two threads were used in the warp and they were as follows:

- X--Heavy, Natural Black Welsh Wool
- O--2/18's Raw White or Natural White wool.

### WEFT USED:

The same two threads that were used in the warp were also used in the weft.

### REED USED:

An 8 dent reed was used, and it was double sleyed, 2 ends per dent. There was 1 end of the heavy natural black and one end of the fine 2/18's worsted in raw white in each dent of the reed.

### THREADING DRAFT:

8		X	O		X	X	X	X	O	X		
7		X	O		X	X		X	X	O	X	
6		X	O		X	X	X	X	X	O	X	
5		X	O		X		X	X		X	O	X
4		X	O		X	O	O		O	O	X	O
3		O		X	O	O	O	O	O	X		O
2		O		X	O	O	O	O	O	X		O
1		O		X	O	O	O	O	O	X		O



### KEY TO THREADS IN THE WARP:

- X--Heavy, Natural Black Welsh wool
- O--2/18's Worsted, Raw White or Natural

## DRAFTS AND DESIGNS

Published monthly (except July and August) by Robin & Russ Handweavers, 533 N. Adams St., McMinnville, Oregon.

SUBSCRIPTIONS: \$5.00 per year. Back issues or single copies, 50¢ each. Yearly subscriptions start with the September issue. If you subscribe after September, back issues from then on will be mailed to you, unless you specify that you want your subscription to start with the next September issue.

VOLUME 14, Number 2. October, 1971

### TIE-UP DRAFT:

8					0	0	0	0	
7				0	0	0	0		
6			0	0	0	0			
5		0	0	0	0				
4	0	0	0	0					
3	0	0	0						0
2	0	0						0	0
1	0					0	0	0	
	1	2	3	4	5	6	7	8	

### SOURCE OF THE IDEA FOR THIS SAMPLE:

I saw an afghan or robe of this woven by Elisabeth Tenney of Webster Groves, Missouri. She kindly sent me the draft and a sample of her afghan, and said that this is an adaptation of a weave in the Recipe Book, by Mary Atwater.

### COST OF THE THREADS USED:

The Welsh Natural Black wool is also available in a dark grey, medium grey, and natural white as well as this natural black. It is \$5.60 per lb., and comes in 1/2 lb. skeins. The 2/18's raw white or natural white also comes in 38 other colors. It has 4800 yards per lb., and comes on 1/2 lb. cones, and is \$6.80 per lb.

### COST OF THE FABRIC:

Because of the difference in size of the threads, there is more take-up of the fine thread crossing over the heavier natural black, so we have to have a longer warp of the fine weight. This means you should have two warp beams. We had 8 yards of the natural black heavy warp, and  $9\frac{3}{4}$  yards of the fine 2/18's raw white. The 8 yards of warp took 4 lbs. 11 oz. of the heavy natural black, and the  $9\frac{3}{4}$  yards took 10 oz. of the 2/18's raw white. Thus, the total warp cost was \$30.50 or \$3.82 per yard.

In the weft, we received slightly less than  $6\frac{1}{2}$  yards of fabric from our 8 yard warp. It took 3 lbs. 10 oz. of the heavy natural black and 8 oz. of the 2/18's

raw white in this  $6\frac{1}{2}$  yards. Thus, the total weft cost was \$23.70, or the cost per yard was \$3.65 per yard.

WARP COST PER YARD, 40" WIDE---- \$3.82  
WEFT COST PER YARD----- 3.65

=====

FABRIC COST PER YARD----- \$7.47

### TREADLING SEQUENCE:

There are 61 shots in one complete repeat of the pattern. We will give the first 31 shots here, and then you reverse and come back up to the top, making sure you do not repeat the last thread given here (the 31st) two times, as it is the center thread, and you only do it once.

1. Treadle # 8-- Dark Natural Black
2. Treadle # 4-- 2/18's Raw White
3. Treadle # 7-- Dark Natural Black
4. Treadle # 3-- 2/18's Raw White
5. Treadle # 6-- Dark Natural Black
6. Treadle # 2-- 2/18's Raw White
7. Treadle # 5-- Dark Natural Black
8. Treadle # 1-- 2/18's Raw White
9. Treadle # 4-- Dark Natural Black
10. Treadle # 8-- 2/18's Raw White
11. Treadle # 3-- Dark Natural Black
12. Treadle # 7-- 2/18's Raw White
13. Treadle # 2-- Dark Natural Black
14. Treadle # 6-- 2/18's Raw White
15. Treadle # 1-- Dark Natural Black
16. Treadle # 5-- 2/18's Raw White
17. Treadle # 8-- Dark Natural Black
18. Treadle # 4-- 2/18's Raw White
19. Treadle # 7-- Dark Natural Black
20. Treadle # 3-- 2/18's Raw White
21. Treadle # 6-- Dark Natural Black
22. Treadle # 2-- 2/18's Raw White
23. Treadle # 5-- Dark Natural Black
24. Treadle # 1-- 2/18's Raw White
25. Treadle # 5-- Dark Natural Black
26. Treadle # 2-- 2/18's Raw White
27. Treadle # 6-- Dark Natural Black
28. Treadle # 3-- 2/18's Raw White
29. Treadle # 7-- Dark Natural Black
30. Treadle # 4-- 2/18's Raw White
31. Treadle # 8-- Dark Natural Black

Note-- # 31 is center of pattern repeat. After # 31, treadle 30, 29, 28, 27, etc. back to # 1 for one complete pattern repeat.

### MORE ABOUT THIS FABRIC:

Elizabeh Tenney's sample was all done in the same weight 4 ply knitting worsted. I thought it might create more interest to use a contrast in size of threads used, so we did it, not realizing the problems.

First of all, you need two warp beams for a fabric such as this, with the contrasting sizes of thread. You need a



longer warp of your finer thread to allow for the take-up in crossing over the heavier thread. For 8 yards of the heavier thread, we needed  $9\frac{1}{2}$  yards of the finer thread.

NOTE: If you use the same size thread in two different colors, then you can do it on only one warp beam.

In other words, this sample was a HUNDINGER TO WEAVE. It was hard to separate the shed because of the contrast in sizes of thread, so we fastened iron rods weighing a total of about 12 lbs. for the 8 harnesses, to the top of each harness. Then, because of the added weight, the shed separated satisfactorily. If you do it with the same weight thread in two colors, then I do not think that this will be a problem. Even after weighing the harnesses with about  $1\frac{1}{2}$  lbs. of iron rod on each, we had to use a tight warp on the heavy natural black wool, and a loose warp on the raw white. The fine thread tends to stick to the heavier thread, so you should use a double beat, beating with the shed open, changing to the next shed, and beating again before you throw the shuttle.

And, you have to keep the warp fairly tight, or it tends to move forward with the beating of the reed.

So, you can see there are some problems with this, and if you persevere, and don't swear too much, and continue to work, then you have a sample like ours.

And ONE MORE IMPORTANT THING. Because of the weight and size of the thread used, it is impossible to show you a complete repeat of the pattern in the sample swatch. However, it is an attractive fabric when woven.

Mrs. Tenney also suggested that if you let a 5" loop hang on each edge of each weft shot, this makes a nice fringe, and thus, you can have a fringe the entire outside of the lap robe.

#### A D V E R T I S I N G

Because we need the extra column to give you all the details, we have this extra column and the back of this 2nd page. Our printer suggested that we put some advertising on this column and on the back, as there would be no additional cost to having it printed, so we will give you herewith a sort of Classified Column whenever this happens, and perhaps put a book review or related information on the back. This will happen only when I cannot get all the copy on the normal single page of Drafts and Designs.

#### CLASSIFIED ADVERTISING:

AN EYE FOR COLOR, by Bernat Klein is a fascinating book on color by Scotland's leading designer of mohair fabrics. His hobby is painting, and he relates painting and weaving and some of the color plates show his interpretation of painting, and then weaving a fabric from that painting. His color theories are interesting and quite helpful. The book is \$9.95, and we also have a few of his color guides which are a guide to the color of clothing and fabrics you should wear and have near you. The color guides are \$1.50. Postage is extra on both.

#### SWISS WOOD BELT BUCKLES AND BEADS:

We have an assortment of swiss belt buckles which range from 75¢ to \$1.25 each, and an assortment of about 35 different kinds of handmade swiss beads, at 25¢ each. The beads are of beautiful wood, and we sell them for Macrame necklaces and bags. The jet black wooden beads are very popular when used in some of the handbags.

WE ARE REPUBLISHING THE MAIDMONT BOOK, A COMPLETE GUIDE TO HANDMADE BOBBIN LACE. It will sell at \$12.50 a copy plus postage and insurance. Our 500 copies are on the way to us now from England. Besides this one, we also have published another book, THE ROMANCE OF THE LACE PILLOW, by Thomas Wright. This book is not an instruction book but more of a history of lace in England, and you will enjoy the many illustrations. It is \$11.50 plus shipping & insurance.

#### 13" LONG REED HOOKS WITH V TYPE OPENING

These longer hooks are excellent when you want to use them on a 6 or 8 or 12 harness loom, or when you want to bring your warp threads through both the heddle and reed at the same time. \$1.75 each, plus shipping. V cut opening is good for the heavier threads and novelties of all kinds.

#### CERAMIC SPINNING WHEEL BROOCHES.

These are beautiful lapel pins which we have imported from the Channel Islands, off the coast of England. They sell for \$3.95 each, postage prepaid. They are trimmed all around the edge in gold, and are available in 4 colors. In a tan or lighter tan, and in a light or medium green. Spinning wheel is reproduced on the face of the brooch.

5 POUND BALLS OF NATURAL JUTE AND ALSO WHITE SISAL. The natural jute is 5 ply and the white sisal is 3 ply, and we have been selling quite a bit of this for Macrame. Price is \$4.00 per ball, plus shipping.

INDIAN BLANKETS AND THEIR MAKERS:

Just reprinted after being out of print for 35 years, this outstanding book would be excellent for those interested in navaho rugs of all kinds. Their techniques are illustrated, the explanations of their designs, and other related information is given in this outstanding book. Price is \$20.00, plus 48¢ postage & insurance.

6/1 Natural & 6/1 White LINEN SPECIAL

This is the last of the linen spun in Oregon we have been able to find. It is on 1/2 lb. tubes, and is on sale at \$1.30 per tube. A good price, and a nice quality linen. About 25 lbs. of each left.

10/3 NATURAL UNMERCERIZED COTTON SPECIAL

We have about 50 lbs. of 10/3 natural unmercerized cotton. On slightly over 1 lb. tubes, we are selling them at \$2.00 per tube. A good, good buy. Postage is extra.

CASTLE TYPE SPINNING WHEELS. These are the beautiful small 4 legged castle type wheels from Norway. So many people say they are excellent to learn to spin on. We have 3 more on hand, and 12 more that are lost somewhere because of the dock strike, which we hope will be in here sometime soon. They sell for \$95.00 plus shipping. We have sold about 100 of these in the past 4 years, and they are always well received. Had 12 of them on hand 2 months ago, and these 3 are the last of these 12.

6" and 7" diameter BAMBOO CIRCLES. So popular for bags of all kinds, these 2 sizes in Bamboo circles sell for \$1.75 per pair, or \$1.00 each, if you just are interested in one. Postage extra on all orders. Also, many other bamboo bag handles not in our catalogue have just come in from Switzerland. Prices range from \$2.50 per pair to \$4.00 per pair. Different sizes available from about 7" width to 10" width with removeable bars, so you can use different bags on the same bag handles.

CORN DOLLS FROM CZECHOSLOVAKIA

These beautifully made dolls, made of corn husks, and with linen for hair are so striking. They are about 6" tall, and make nice gifts. We have about 6 of them that we hang on the Christmas tree. They are \$3.50 and \$3.95 each. The ones for \$3.95 are double dolls, with a mother and daughter doll together. Postage is extra on all orders.

14 COLORS IN WOOL TWEED FROM ENGLAND

Enroute to us now are 14 colors in wool tweed, which will be a standard stock item in our shop. This tweed has 1800 yards per lb., and we will make up sample sheets of the colors, as soon as it comes in.

THE TECHNIQUE OF WOVEN TAPESTRY, by Tadek Beutlich, is out of print in this country, and we purchased about 50 copies in England this summer. It is still \$10.95, and is one of the detailed books that is an outstanding instruction book for tapestry. It is done by one of England's most famous tapestry weavers. \$10.95 plus 48¢ p.p. & insurance. About 25 copies left.

TAPESTRY HANGERS FOR MACRAME TAPESTRY

We have specially made wooden hangers of varying lengths for Macrame Hangings and Woven Tapestry. Besides these wooden ones, we also have about 6 different metal tops and bottoms for hangings. The little narrow ones of about 3", 4" and 5" have a bell on the bottom of these hangers, and are \$3.50 plus postage.

BOBBIN LACE PILLOWS IN STOCK. These small compact bobbin lace pillows are imported from Switzerland from Sweden, and are \$17.50 each, plus shipping. Nicely made, with rollers, and drawer for storage, we've sold many of them during the past 10 years.

9 COLORS IN FINE NUB-LOOP WOOL. This is a very nice wool yarn with a black core, and comes on cones of about 1 lb 2 oz. each. Price is \$4.80 per lb., and the colors are rich and scrumptuous. About 2400 yards per lb.

45/3 BLEACHED WHITE LINEN: on 1 lb. tubes, at \$3.20 per lb. Have sold many pounds of this for bobbin lace, and it is excellent warp for linen table cloths, mats, drapes, etc. It has 4500 yards per lb., and at \$3.20 per lb., it is now at about 1/3 of what it would normally sell for. We have about 100 lbs. left on hand.



# drafts and designs

*a guide for 5 to 12 harness weaves*

VOLUME 14, Number 3, November, 1971

VOLUME 14, Number 3, November, 1971

RIBBED YELLOW DIAMOND

This 7 harness fabric would make an excellent upholstery fabric, and it is both decorative and different.

WARP:

Two threads were used in the warp. One was our 2/18's worsted, color # 25, Olive Green. This is english worsted, available on approx. 1/2 lb. cones.

WEFT:

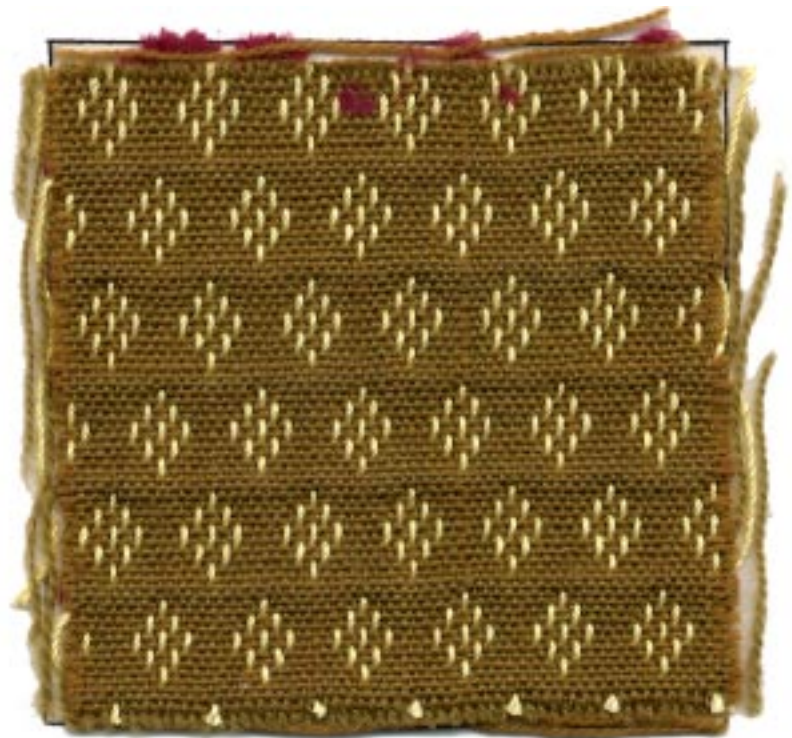
Two threads were used in the weft. One was our 2/18's worsted, color # 22, Khaki Drab. The other thread used to make the rib was a 4 ply soft twist cotton in a wine color.

REED USED:

A 15 dent reed was used, and it was triple sleyed, 3 ends per dent, or 45 threads per inch. In each dent of the reed, there are 2 ends of 2/18's worsted, and one end of size 10/3 lemon tint cotton.

THREADING DRAFT:

7					0				0	
6								0		
5			0							
4		0			0					
3	0					0				
2	X	X	X	X	X	X	X	X	X	X
1	X	X	X	X	X	X	X	X	X	X



KEY TO THREADS IN THE THREADING DRAFT:  
 X--2/18's Worsted, # 25 Olive Green  
 0--10/3 Cotton, Lemon Tint



## DRAFTS AND DESIGNS

Published monthly (except July and August) by Robin & Russ Handweavers, 533 N. Adams St., McMinnville, Oregon.

SUBSCRIPTIONS: \$5.00 per year. Back issues or single copies, 50¢ each. Yearly subscriptions start with the September issue. If you subscribe after September, back issues from then on will be mailed to you, unless you specify that you want your subscription to start with the next September issue.

VOLUME 14, Number 3, November, 1971

### TIE-UP DRAFT:

7					0				
6				0		0			
5		0		0					
4			0						
3				0			0		
2	0							0	
1	0								0
	1	2	3	4	5	6	7	8	9

### TREADLING SEQUENCE:

In this treadling sequence, we have to use two treadles at one time for most of the pattern shots for the diamond, and then use only one treadle for the tabby shots in between the diamonds.

1. Treadle 5 & 8--- Khaki drab 2/18's
2. Treadle 5 & 9--- Khaki drab 2/18's
3. Treadle 6 & 8--- Khaki drab 2/18's
4. Treadle 6 & 9--- Khaki drab 2/18's
5. Treadle 7 & 8--- Khaki drab 2/18's
6. Treadle 7 & 9--- Khaki drab 2/18's
7. Treadle 6 & 8--- Khaki drab 2/18's
8. Treadle 6 & 9--- Khaki drab 2/18's
9. Treadle 5 & 8--- Khaki drab 2/18's
10. Treadle 5 & 9--- Khaki drab 2/18's
11. Treadle # 8----- Khaki drab 2/18's
12. Treadle # 9----- Khaki drab 2/18's
13. Treadle # 1----- Wine Cotton Padding  
This is the end of the first diamond.
14. Treadle 2 & 8--- Khaki drab 2/18's
15. Treadle 2 & 9--- Khaki drab 2/18's
16. Treadle 3 & 8--- Khaki drab 2/18's
17. Treadle 3 & 9--- Khaki drab 2/18's
18. Treadle 4 & 8--- Khaki drab 2/18's
19. Treadle 4 & 9--- Khaki drab 2/18's
20. Treadle 3 & 8--- Khaki drab 2/18's
21. Treadle 3 & 9--- Khaki drab 2/18's
22. Treadle 2 & 8--- Khaki drab 2/18's
23. Treadle 2 & 9--- Khaki drab 2/18's
24. Treadle # 8----- Khaki drab 2/18's
25. Treadle # 9----- Khaki drab 2/18's
26. Treadle # 1----- WINE Cotton Padding  
End of one complete pattern repeat. You treadle over and over as desired.

### COST OF THREADS USED:

The 2/18's worsted comes on 1/2 lb. cones, has 2400 yards per lb., and is \$6.80 lb. The 10/3 cotton comes on 1 lb. cones, 24 colors, \$3.85 per lb.

The wine, 4 strand cotton is regularly 39¢ skein, and is on sale at 15¢ a skein.

### COST OF THE FABRIC:

In our 8 yard warp, 40" wide, it took 1 lb. 15 oz. of the # 25, Olive Green worsted, and it took 1 lb. 11 oz. of the lemon tint, 10/3 cotton. Thus, our total warp cost for 8 yards was \$15.82, or the cost per yard was \$1.98.

In the weft, we received 6-2/3 yards of a fabric from our 8 yard warp. It took 1 lb. 3 oz. of Khaki drab 2/18's worsted and it took slightly less than 6 skeins of the wine 4 strand cotton filler. Thus, our weft cost was \$8.98, or the cost per yard came to \$1.35 per yard.

WARP COST PER YARD----- \$ 1.98  
WEFT COST PER YARD----- 1.35  
FABRIC COST PER YARD----- \$ 3.33

### SOURCE OF IDEA FOR THIS SAMPLE

We were inspired to do this sample by seeing a sample woven by Vashti Fromen, a member of Contemporary Handweavers of Texas.

### MORE ABOUT THIS SAMPLE:

First of all, let me tell you that you might have a little trouble getting a good clear shed in weaving this fabric, as it is threaded 45 per inch. However, if you are careful, and beat with the shed open, change to the next shed, and beat again, and then throw your shuttle, you should have not too many problems with the shed opening.

And, if you have all of your warp on the same warp beam, you will probably have to take a lease stick, and pass it under all of the cotton threads in lemon tint, and slide this lease stick over the back beam, and down to the warp beam, and then put a weight on each end and the middle. You will find that from an 8 yard warp, that when you have woven as far as you can, that because of the elasticity of the wool, and character of the weave, that you have about 35" more of cotton warp left, than you have of worsted warp. As you see when you look at the back of the sample, the lemon tint thread is woven in at intervals, and thus, slack develops. And you have to keep it at a tight tension like the 2/18's worsted.

USE A TEMPLE OR STRETCHER. It helps in weaving this fabric.



# drafts and designs

*a guide for 5 to 12 harness weaves*

VOLUME 14, Number 4. December, 1971

SUMMERTIME:

This month, we feature an 8 harness, lace weave, using a pleasing combination of colors for a summer tablecloth.

WARP:

Our warp was a 16/2 Ramie thread imported from Switzerland. The color used was Columbian Gold.

WEFT:

Our weft thread was the 16/2 Swiss Ramie in a color called "Summer Orange." Just one color was used in the weft.

REED USED:

A 10 dent reed was used, and it was double sleyed, 2 ends per dent, or 20 threads per inch.

WARP WIDTH AND LENGTH:

Our warp was set up on the loom 43 inches wide, and we had an 8 yard warp length.

NOTE ABOUT READING THREADING AND TIE-UP

DRAFTS. I have always written the threading drafts so that you read them from the right to the left, but the tie-up drafts,



I always read them from the left to the right. This has always been my procedure and I don't know whether it is correct or not, but it is the way I have always done it.

THREADING DRAFT:

8												X
7										X		X
6	X									X		
5		X							X			
4			X				X					
3				X								
2		X	X		X	X		X	X		X	X
1	X		X	X		X	X		X	X		X

## DRAFTS AND DESIGNS

Published monthly (except July and August) by Robin & Russ Handweavers, 533 N. Adams St., McMinnville, Oregon.

SUBSCRIPTIONS: \$5.00 per year. Back issues or single copies, 50¢ each. Yearly subscriptions start with the September issue. If you subscribe after September, back issues from then on will be mailed to you, unless you specify that you want your subscription to start with the next September issue.

VOLUME 14, Number 4. December, 1971

### TIE-UP DRAFT:

8		0	0		0		0	
7	0			0		0		0
6	0		0			0	0	
5		0			0			0
4	0			0		0	0	
3		0	0		0			0
2	0		0		0		0	
1		0		0		0		0
	1	2	3	4	5	6	7	8

### TREADLING SEQUENCE:

There are 30 shots in one complete pattern repeat. Rather than list it as 1 to 30, I will just list the numerical sequence of the treadles as you use them.

Treadle 7, 2, 7, 8, 1, 8, 7, 2, 7, 8, 3, 8, 7, 4, 7, 8, 5, 8, 7, 6, 7, 8, 5, 8, 7, 4, 7, 8, 3, 8. End of one complete repeat. Repeat over and over as desired.

In this treadling sequence, it is easier to remember the treadling if you divide your treadling into groups of 3 threads, as I will show you here. It helps you to keep track of your treadling sequence.

Treadle 7,2,7 then 8,1,8, then 7,2,7, then 8,3,8, then 7,4,7, then 8,5,8, then 7,6,7, then 8,5,8, then 7,4,7, then 8,3,8. End

Notice how much easier the treadling sequence is if you think of it as groups of three threads.

### MORE ABOUT THE PATTERN AND FABRIC:

If you want a plain weave border on the right and left side of your table cloth, then you can thread it just 1,2,1,2 for the width of plain weave desired. Then to balance on the left side of the table cloth, you will thread your plain weave 2,1,2,1 for the desired width. Also, you will have to balance your pattern so that the right and left sides are both the same, and to do this, after you have threaded from right to left, on your last repeat, you will have to add the first 11 threads of the threading draft to balance. Let me give you an example. On a table cloth 45" wide, you will have 901 warp ends to make your table cloth completely balanced.

1. Right Border 1,2-- 20 times = 40 thds.
  2. Pattern, repeat 27 times = 810 thds.
  3. To balance pattern, 11 thds. 11 thds.
  4. Left Border 2,1-- 20 times = 40 thds.
- Tablecloth balanced both sides= 901 thds.

### MORE ABOUT THIS FABRIC:

This is an easy to weave fabric. You do want to use a firm, even, double beat, to beat the fabric tightly together. Then, after weaving, take it off the loom, and hem the ends, and then wash. Or you can wash and then hem. The washing and the steam pressing afterwards allows the open lace areas to take shape better and make for a much more interesting fabric.

There were no problems in the weaving of this fabric, I'm pleased to say.

### COST OF THE THREADS USED:

The ramie comes on approximately 1 lb. tubes at \$5.60 per lb. You can also purchase it in 4 oz. tubes at \$1.50 each. It has 2400 yards per lb., or 600 yards per 4 oz. tube. It is available at present in 21 different colors, and the colors are washfast and sunfast.

### COST OF THE FABRIC:

It took 2 lbs. 14 oz. for a 43" wide warp, 8 yards long. The total warp cost was \$16.10, and the cost per yard was \$2.02.

In the weft, we received 7 yards of fabric. It took slightly less thread in the weft, and for the 7 yards, it took 2 lbs. 8 oz., and the total cost of this was \$14.00 or the cost per yard was \$2.00 per yard.

WARP COST PER YARD--43" Wide--\$ 2.02

WEFT COST PER YARD----- 2.00

FABRIC COST PER YARD-----\$ 4.02

If you decide to do a 45" x 72" tablecloth, it will take 900 yards of thread for the warp in the table-cloth, and with about 18 picks per inch in the weft, you would use another 1625 yards of weft. Thus, a tablecloth would take 3425 yards of the 16/2 ramie, or slightly less than 1½ lbs. of ramie thread. At \$5.60 per pound, one table-cloth 45" x 72" in size would cost you \$8.40. Of course, this does not allow for any loom waste, but just for the actual threads in the table-cloth.

### USE THIS FABRIC FOR DRAPERIES

This pattern and fabric should make you an excellent drapery. Because of the lace patterns, it allows the light to come through in an interesting manner, and so with it's properties of sun-fast, and wash-fast colors, it should be ideal for such a use.



# drafts and designs

*a guide for 5 to 12 harness weaves*

VOLUME 14, Number 5, January, 1972

CREPE SUZETTES:

Our sample this month is an 8 harness crepe weave that I think you will enjoy. It is woven of spun silk for warp and for weft.

WARP:

The warp is some of our 8 ply Swiss spun silk in an Olive Drab color.

WEFT:

The weft is a different color of the 8 ply spun silk called Sea Foam Grey.

REED USED:

A 15 dent reed was used, and it was double sleyed, 2 ends per dent, or 30 threads per inch.

WIDTH OF FABRIC ON LOOM, AND OTHER DETAILS

The loom was set-up 40" wide, and it wove down to about 39 inches when it came off the loom. A 7 yard warp was used, and from this, there was 6 yards and 3 inches of finished fabric.

THREADING DRAFT:

8		8		8
7			7	7
6	6		6	
5	5			5
4		4		4
3	3		3	
2	2			2
1		1		1



NOTE ABOUT THREADING DRAFT

I used a number on each harness to represent a warp thread, rather than an X. I did this, so I could better illustrate the way your warp is threaded. I'm sure that if I had an X only, that some would question the sequence of the threads in the draft, but they are in the correct sequence above.

SOURCE OF IDEA FOR THIS SAMPLE:

Two persons inspired this sample. Miss Lucille Hartman of Manhattan, Kansas shared some of her samples of crepe weaves with us, and also Mr. Phil Wilson, of



## DRAFTS AND DESIGNS

Published monthly (except July and August) by Robin & Russ Handweavers, 533 N. Adams St., McMinnville, Oregon.

SUBSCRIPTIONS: \$5.00 per year. Back issues or single copies, 50¢ each. Yearly subscriptions start with the September issue. If you subscribe after September, back issues from then on will be mailed to you, unless you specify that you want your subscription to start with the next September issue.

VOLUME 14, Number 5, January, 1972

Spokane, Washington had woven some samples of crepe weaves for us, and from these two, and from weaving a crepe weave while in England this summer; from these come the inspiration for this sample.

### MORE ABOUT THIS FABRIC:

First of all, this sample was woven out of silk, as I sometimes feel that it has a "crepe" feeling to begin with. Also, the silk seems so rich and luxurious, and to me, is the most pleasing of all fibers to weave with. The finished fabric always seems richer than one anticipates.

This fabric was washed in luke warm water, and then steam pressed with the heat that you use for perma press fabrics. It is so much softer and richer now, than it was before it was washed and pressed.

I also wanted to mention that with the tie-up we have used in this sample, the pattern that is face-up on this issue, will weave face down. So, if you want to weave it face up, just reverse your tie-up complete from the one I have given, and then the fabric will weave face up. Here is an example. On the first treadle, we have harnesses 1,2,4,5 all tied to the first treadle in the tie-up I've given. The exact opposite of this would be 3,6,7,8. Maybe I should give both tie-ups, so you can better understand what I mean.

You want to use a firm, even, double beat. Not too hard a beat, but not too soft. Just a medium, firm, even beat. Develop a rhythm, or weave to the beat of music, and this will help you develop a more even beat. You will find that you like your weaving much better if you do have an even beat.

This 8 ply swiss spun silk, is part of the 1,000 pounds we purchased two years ago in Switzerland. It was an odd lot that we purchased, and there are about 100 colors with anywhere from 1/2 a lb. to 2 1/2 or 3 lbs. of a color. It is impossible for us to make up sample sheets

showing all the colors available in this, as there is so little of some colors. However, if you are interested in a specific color, we will make up a sample sheet for you and ask that you return it after you have seen it, and perhaps made a choice of colors. This is an exceptionally good buy in silk at \$8.00 per lb. One of our competitors back east has almost the identical same kind of silk at \$24.00 per lb. Our price of \$8.00 is because I was able to purchase this odd lot of silk, and then have it 8 plied to make it a better weight for weaving.

The two colors used in this sample were all used in this particular sample, but we do have many closely related shades.

### TIE-UP DRAFT---PATTERN WEAVES FACE DOWN

8			X	X		X	X	
7		X	X			X	X	
6			X	X		X	X	
5	X		X	X			X	
4	X				X	X	X	
3		X	X		X	X		
2	X	X				X	X	
1	X	X		X	X			
	1	2	3	4	5	6	7	8

### TIE\*UP DRAFT---Pattern Weaves Face Up

8	X	X	X			X		
7	X			X	X	X		
6	X	X			X		X	
5		X			X	X	X	
4		X	X	X			X	
3	X			X			X	X
2			X	X	X			X
1			X			X	X	X
	1	2	3	4	5	6	7	8

### COST OF THE THREADS USED:

This 8 ply Swiss spun silk comes on cones of anywhere from 3 to 6 oz. in weight. It has about 5,200 yards per lb., and is \$8.00 per lb. There are limited amounts of about 100 colors available, from 1/2 to about 2 1/2 or 3 lbs. of a color.

### COST OF THE FABRIC:

In our 7 yard warp, it took 1 lb. and 12 oz. of the Olive Drab color. At \$8.00 per lb., our warp cost was \$14.00, or the cost per yard was \$2.00 per yard.

In our 6 yards and 3 inches of finished weft, it took 1 lb. 11 oz. of the Sea Foam Grey color. Thus the total weft cost was \$13.50 for 6 yards or the weft cost per yard came to \$2.25 per yard.

WARP COST PER YARD----- \$ 2.00  
WEFT COST PER YARD----- 2.25  
FABRIC COST PER YARD----- \$ 4.25





# drafts and designs

*a guide for 5 to 12 harness weaves*

VOLUME 14, Number 6 February, 1972.

KAREN'S PATTERN: - - -

This interesting 8 harness draft was inspired by a sample woven by Mrs. Karen Gartner, of Anaheim, Calif., and should make a beautiful coat or suit material.

WARP THREADS USED:

There were 3 threads used in the warp. Two of them were the English 2/18's worsted, and the third was one of the beautiful loop mohairs from Ireland in a Blue and Green combination.

- M--Mohair loop, blue & green
- G--2/18's worsted, Chantilly Green # 13
- B--2/18's worsted, Monday Blue # 27.

WEFT THREADS USED:

There were three threads used in the weft also. Two of them were the 2/18's English worsted in the same colors as in the warp. # 27, Monday Blue; and # 13, Chantilly Green. The third thread in the weft is the one that makes the fabric outstanding. It is the thread we import from Ireland called Brookside, a combination of blues and greens in a Brushed Nub wool and Mohair combination.



KEY TO THREADS IN THE THREADING DRAFT:

- B--- 2/18's worsted # 27, Monday Blue
- G--- 2/18's worsted # 13, Chantilly Green
- M--- Loop mohair, large loop, blue and green combination with black core.

THREADING DRAFT:

	17			28			17			28		
8	M	M	M				M	M	M			
7	G	G		G			B	B		B		
6	B	B		G			G	G		B		
5	G	G		G			B	B		B		
4	B	B		G			G	G		B		
3	G	G		G			B	B		B		
2	B	B		G			G	G		B		
1	G	G		G			B	B		B		
	1 X			4 X			1 X			4 X		

## DRAFTS AND DESIGNS

Published monthly (except July and August) by Robin & Russ Handweavers, 533 N. Adams St., McMinnville, Oregon.

SUBSCRIPTIONS: \$5.00 per year. Back issues or single copies, 50¢ each. Yearly subscriptions start with the September issue. If you subscribe after September, back issues from then on will be mailed to you, unless you specify that you want your subscription to start with the next September issue.

VOLUME 14, Number 6 February, 1972.

### REED USED:

A 12 dent reed was used, and it was sleyed with a different sleying than usual. The 2/18's worsted were sleyed 2 ends per dent when they came together, and when there was one left before you came to a loop mohair, it was sleyed one end per dent. And, the large loop Irish mohair was sleyed one end per dent.

### TIE-UP DRAFT:

8									0		
7	0	0				0		0			
6	0				0		0	0			
5				0		0	0	0			
4			0		0	0	0			0	
3	0		0	0	0						
2	0		0	0	0						
1	0	0	0					0			
	1	2	3	4	5	6	7	8	9	10	

### TREADLING SEQUENCE:

1. Treadles 1 & 9 together--blue monday
  2. Treadles 2 & 9 together--blue monday
  3. Treadles 3 & 9 together--blue monday
  4. Treadle # 4 alone-----blue monday
  5. Treadles 5 & 9 together--blue monday
  6. Treadles 6 & 9 together--blue monday
  7. Treadles 7 & 9 together--blue monday
  8. Treadle # 8 alone-----blue monday
- REPEAT THESE 8 SHOTS, 3 times---24 threads.
25. Treadle # 10 alone, Brookside--wool nub
  26. Treadles 1 & 9 together--blue monday
  27. Treadles 2 & 9 together--chantilly
  28. Treadles 3 & 9 together--blue monday
  29. Treadles # 4 alone-----chantilly
  30. Treadle # 10 alone--Brookside--wool nub
  31. Treadles 1 & 9 together--chantilly
  32. Treadles 2 & 9 together--chantilly
  33. Treadles 3 & 9 together--chantilly
  34. Treadles # 4 alone-----chantilly
  35. Treadles 5 & 9 together--chantilly
  36. Treadles 6 & 9 together--chantilly
  37. Treadles 7 & 9 together--chantilly
  38. Treadle # 8 alone-----chantilly
- Repeat 31 to 38, 8 shots, 3 times for 24 threads.

55. Treadle # 10 alone, Brookside--wool nub
  56. Treadles 1 & 9 together--blue monday
  57. Treadles 2 & 9 together--chantilly
  58. Treadles 3 & 9 together--blue monday
  59. Treadles # 4 alone-----chantilly
  60. Treadle # 10 alone--Brookside--wool nub.
- END OF ONE COMPLETE PATTERN REPEAT. Repeat over and over as desired.

Please NOTE THAT IN THE TREADLING, YOU STEP ON TWO TREADLES TOGETHER FOR MANY OF THE SHOTS IN THE TREADLING DRAFT. Just follow the directions as given above.

### MORE ABOUT THE FABRIC:

There is one problem in the weaving of this fabric. That is the fact that the large loop mohair gradually loses some of its tension, and you have to compensate for this accordingly. The easiest way, on one warp beam, is to take a lease stick, and behind the harnesses pick up all the loop mohair threads, pass the lease stick over the 2/18's worsted, and under the loop mohair threads. Then slide it back over the back beam of the loom and down to the warp beam. Put a weight on the center and each end of the lease stick, and as you do progress in the weaving, the weights on the lease stick will keep the tension on the loop mohair threads about the same tension as the 2/18's worsted. The tension on this loop mohair did not give any trouble until after about 2 yards were woven. Then the lease stick was inserted and used as described above. When the 11 yard warp was finished, it was found that there was about 20" of slack in the loop mohair which was controlled by the lease stick and weights.

It also seemed much easier to weave if you wove with a fairly tight tension on the warp, and this prevented the mohair from sagging.

AND MOST IMPORTANT. PLEASE NOTE THAT IN THE WEFT, THE TWO COLORS OF 2/18'S WERE DOUBLED ON THE BOBBIN AND USED AS ONE THREAD.

We normally more or less beat to square, but we do not worry about this too much.

We had an 11 yard warp on the loom, and after the fabric was taken off the loom, it was measured, and found that we had 9-2/3 yards of fabric from the 11 yard warp.

### COST OF THE THREADS USED:

The 2/18's worsted comes on approximately 1/2 lb. cones, has 4800 yards per pound, and sells at \$6.80 per lb. There are 39 different colors in stock.

And the loop mohair used in the warp is on sale at \$4.00 per lb., instead of the usual \$6.80 per lb. price that it normally is. We found an odd lot of this last summer in England, and purchased it as a large lot at a reduced price, and so we can pass the savings on to you. We have 6 different colors of this on hand at present.

Also, we have still a 4th thread which was used in the weft. It is the one called Brookside, which is a blue and green brushed mohair and wool nub yarn. This is currently \$6.80 per lb. while our current stock lasts, but we do have it on order in 5 colors, with delivery to be in April, and we understand that it has gone up in price about \$1.00 per lb. in Ireland where it comes from, so when our current stock is sold out, it will be \$7.60 per lb. when it comes in, in April.

#### MORE ABOUT THE PATTERN DRAFT:

Please note that there are 90 threads in one complete pattern draft. The threading draft was divided into 4 parts and the first part had 28 threads; the 2nd part had 17 threads; the third part had 28 threads, and the 4th part had the 17 threads--making a total of 90 threads in one complete pattern draft.

One thing more about the fabric. The heavy Brookside, brushed nub and wool yarn is a sort of an overlay thread, being tied down only by the threads on harness # 4. Because of this it is an interesting fabric. If you will note on the underside, that practically nothing of this thread shows on that side of the fabric.

And one more note about the treading. I think you will find it easier to treadle, if you do not drop the # 9 treadle with the mohair, until after you pick up the # 4 treadle or the # 8 treadle in the sequence given. This stops the loop mohair from possibly sticking and coming up with the # 4 or # 8 treadle, when you use them.

#### COST OF THE FABRIC:

In the 11 yard warp, 40" wide, it took slightly less than 1 lb. of each of the two colors of 2/18's worsted, and 14 oz. of the blue green large loop mohair. Thus, the total warp cost came to a total cost of \$17.10 for all three threads, or the cost per yard was \$ 1.56 per yard.

In the weft, in the 9 yards of fabric, plus the 27", it took 1 lb. 12 oz. of

each of the 2/18's worsted, and 2 lbs. 4 oz. of the brushed nub Brookside yarn. Thus the total weft cost was \$39.10 for the 9-2/3 yards, or the weft cost per yard was \$4.05.

WARP COST PER YARD-----	\$ 1.56
WEFT COST PER YARD*-----	4.05
FABRIC COST PER YARD-----	\$ 5.61

Please note that if you went out to purchase a fabric of similiar quality, you would probably find it only in an exclusive fabric shop at about \$30.00 to \$40.00 per yard, if you could get it, as possibly \$5.61 per yard if you weave it yourself.

#### NOTE:

##### TREADLING FOR JANUARY, 1972 SAMPLE.

For the January sample entitled Crepe Susettes, I gave everything but the treading sequence. Some have figured it out I am sure, but the treading is 1,2, 3,4,5,6,7,8, repeated over and over

7/2 AND 10/2 BLEACHED THIRSTY LINEN. Yes, it is once again available. On approximately 1 lb. cones, it is \$4.00 per lb. The 7/2 has about 1050 yards per pound, and the 10/2 has about 1500 yards per lb. For especially nice absorbent towels, for both dish and face towels, and for the large linen bath towel. Imported from Scotland. Robin & Russ, 533 North Adams St., McMinnville, Oregon 97128.

ALPACA, WOOL AND ORLON. This is a beautiful 2 ply yarn which is 15% Alpaca, 65% Shetland wool, and 20% Orlon. It has about 2100 yards per lb., and is \$4.00 per lb. Available in two heather shades, heather blue, and heather green. Excellent for coats, suits, and other such materials. Good for ponchos and quesquemets. Robin & Russ, 533 N. Adams St., McMinnville, Oregon 97128.

CORN DOLLS. This is an apt name for these beautiful hand-made dolls, made out of corn husks in Czechoslovakia. We have 8 different models on hand, some with double dolls, and some single dolls. Beautiful of course when on the Christmas tree, or for accent in a special place. A must for the doll collector. \$3.50 for the single, and \$3.95 for the double doll. Sell many other places at \$5.50 or more. Robin & Russ, 533 N. Adams St., McMinnville, Oregon. 97128.

NEW ROBIN AND RUSS CATALOGUE is at the printers now, and will be available in about 3 weeks. If you'd like to have one, please send us a card or letter telling us so. As they cost us almost 20¢ each to have printed, we do not like to pass them out unless you are interested in our many yarns, books, accessories, looms or other equipment. Send card to: ROBIN & RUSS, 533 N. Adams St., McMinnville, Oregon.

SPINNING WHEEL BROOCHES: These attractive brooches or pins feature a spinning wheel on the front of the brooch. Available in light or dark beige with gold trim, or in light or dark green with gold trim, this brooch comes from one of the Channel Islands, off the coast of England. Price is \$3.95 plus postage. Robin & Russ, 533 N. Adams St., McMinnville, Oregon 97128.

15 COLORS IN CARDED WOOL TOPS: Imported from Switzerland, these carded wool tops are dyed pretty shades of golds, beiges, blues, reds, and greens, as well as the natural. Excellent for either spinning or for weaving the unspun wool rugs, or for accent in wall hangings and the like. Price is \$4.00 per lb., in approximately 1 lb. bags. Robin & Russ, 533 North Adams St., McMinnville, Oregon, 97128.

SLIP-N-SNIP SCISSORS. These exciting new pocket scissors are safe to carry in purse or pocket because of the way the blades fold up and slide into the handles. Excellent for Fisherman, Hunter, Hobbyist. Made of surgical steel here in Oregon, these are becoming more and more popular all over the country. Just \$3.50 per pair, plus postage. ROBIN & RUSS, 533 North Adams St., McMinnville, Oregon 97128.

HEAVY. 4, 5, and 6 PLY NATURAL JUTE IN 10 POUND BALLS OR TUBES. Has been selling to the Macrame enthusiast, this is \$1.00 per lb. for this extremely nice quality natural jute. Not as fuzzy or hairy as many jute threads are, you'll like this. Postage is extra. Sizes are 45/3, 48/6 and 45/5. Robin & Russ, 533 North Adams St., McMinnville, Oregon 97128.

1 1/2 LEA BOILED LINEN. It has 450 yards per lb., and comes on about 2 lb. tubes. An excellent buy at \$1.60 per lb. while it lasts. Just 90 tubes left. When we import this next year after this is sold out, it will probably then sell for about \$3.20 per lb. Robin & Russ, 533 N. Adams McMinnville, Oregon 97128

8". 4 HARNESS. STRUCTO ARTCRAFT LOOMS. These 8", 4 harness looms can be had with either a plain warp beam or a warp beam for structo ready warped spools. Price is \$37.00 plus shipping via parcel post. Delivery within one month of date of your order. Robin & Russ, 533 North Adams St., McMinnville, Oregon.

MINIATURE MODELS OF SPINNING WHEELS. Just 8 of these miniature models of spinning wheels left in two sizes. One is about 7" in height and the other is about 10" in height. Copies of Swiss spinning wheels. Price is \$5.95 for small and \$6.95 for the larger of the two. Also, still on hand are 3 of these miniature spinning wheels which are mounted on music boxes. Price is \$19.95 for these 3. All imported from Switzerland. Robin & Russ, 533 N. Adams St., McMinnville, Oregon 97128.

DISH TOWELS. BEAUTIFULLY DESIGNED, FROM SWITZERLAND. These are about a 10 harness or 12 harness weave. Cotton warp, and a linen weft. In 3 color combinations. One is 2 shades of red, one is orange and gold, and one is turquoise and blue. Generous, extra large size, you'll love these towels from Switzerland. Price is just \$2.50 plus shipping. Extra rich looking you'll say. Robin & Russ, 533 N. Adams St., McMinnville, Oregon 97128.

2 HAND SPINDLES: One is lighter weight, natural, unfinished which we import from England at \$1.50 each, and the other is one made here for us in the U.S.A, which is slightly heavier and finished, and sells for \$2.00. Postage is extra. Robin & Russ, 533 N. Adams St., McMinnville, Oregon. 97128.

FINE, 2 ply jute, in 200 yard tubes. This, we also import from England. Wine red, orange, royal blue, and dark green. Only colors available. We sell a lot of this for Macrame, at \$1.00 per 200 yard tube. Robin & Russ, 533 N. Adams St., McMinnville, Oregon 97128.

DOUBLE QUICK COTTON in 18 COLORS. Excellent for Macrame, for card-weaving and inkle weaving, we keep these 18 colors in stock all the time. Has 115 yards per skein, and is 55¢ per skein. Our best card-weaving thread. Much of it is sold for macrame. You can get small amounts for not too much cost. Free sample sheet send to you upon receipt of your stamped-self-addressed envelope. Robin & Russ, 533 N. Adams Street, McMinnville, Oregon, 97128.



# drafts and designs



*a guide for 5 to 12 harness weaves*

VOLUME 14, Number 7

March, 1972

**SHIMMERING SHEEN:**

An interesting combination of textures used in both warp and weft, to create an unusual drapery fabric, in a 6 harness weave.

**TIE-UP DRAFT:**

6		0		0		0		0
5	0		0		0		0	
4		0		0				0
3	0		0				0	
2			0	0		0		0
1			0	0	0		0	
	1	2	3	4	5	6	7	8
							A	B

**KEY TO COLORS IN THE WARP:**

X--- Aqua Blue Spun viscose yarn

O--- Sage Green Spun viscose yarn

**WARP:**

A spun viscose, with 1250 yards per pound, in two different colors was used in the warp.

X--- Aqua Blue Spun Viscose

O--- Sage Green Spun Viscose



**WEFT:**

Two yarns were used in the weft. One was an 8 cut rayon chenille in a gold-green color. The other was a 50% rayon 50% nylon slub yarn in a green.

**THREADING DRAFT:**

6								X	X	X	X		
5								X	X	X	X		
4			X	X	X	X				X	X	X	X
3			X	X	X	X				X	X	X	X
2	0	0		0	0		0	0		0	0		0
1		0	0		0	0		0	0		0	0	



## DRAFTS AND DESIGNS

Published monthly (except July and August) by Robin & Russ Handweavers, 533 N. Adams St., McMinnville, Oregon.

SUBSCRIPTIONS: \$5.00 per year. Back issues or single copies, 50¢ each. Yearly subscriptions start with the September issue. If you subscribe after September, back issues from then on will be mailed to you, unless you specify that you want your subscription to start with the next September issue.

VOLUME 14, Number 7      March, 1972

### REED USED:

A 10 dent reed was used, and it was sleyed just one end per dent, or 10 threads per inch.

### TREADLING SEQUENCE:

Please note that there are 32 shots in one complete pattern repeat.

Treadle # 3--- gold-green chenille  
Treadle # 4--- gold-green chenille  
Treadle # 3--- gold-green chenille  
Treadle # 4--- gold-green chenille  
Treadle # 3--- gold-green chenille  
Treadle # 4--- gold-green chenille  
Treadle # 3--- gold-green chenille  
Treadle # 4--- gold-green chenille  
Treadle # 1--- gold-green chenille  
Treadle # 2--- gold-green chenille  
Treadle # 1--- gold-green chenille  
Treadle # 2--- gold-green chenille  
Treadle # 1--- gold-green chenille  
Treadle # 2--- gold-green chenille  
Treadle # 1--- gold-green chenille  
Treadle # 2--- gold-green chenille  
Treadle # 3--- gold-green chenille  
Treadle # 4--- gold-green chenille  
Treadle # 3--- gold-green chenille  
Treadle # 4--- gold-green chenille  
Treadle # 3--- gold-green chenille  
Treadle # 4--- gold-green chenille  
Treadle # 5--- Nile-green nylon & rayon  
Treadle # 6--- Nile-green nylon & rayon  
Treadle # 5--- Nile-green nylon & rayon  
Treadle # 6--- Nile-green nylon & rayon  
Treadle # 5--- Nile-green nylon & rayon  
Treadle # 6--- Nile-green nylon & rayon  
Treadle # 5--- Nile-green nylon & rayon  
Treadle # 6--- Nile-green nylon & rayon

END OF ONE COMPLETE PATTERN REPEAT.

Repeat over and over as desired.

### COST OF THE FABRIC:

Warp, 10 yards, 40" wide, 10 per inch used  
2 lbs. 8 oz. aqua---1 lb. 12 oz. sage green.  
Total warp cost, 10 yards, 40"--- \$ 1.49.

Weft, used 3 lbs. of gold-green chenille,  
2 lbs. 8 oz. Nile nylon & rayon. Total  
weft cost for 9 yards was \$20.75

WARP COST PER YARD--40" wide--- \$ 1.49  
WEFT COST PER YARD----- 2.31  
FABRIC COST PER YARD----- \$ 3.80

### COST OF THE THREADS USED IN THIS SAMPLE:

1. 2 colors spun viscose, \$3.50 per lb.
2. 8 cut gold-green chenille \$4.00 lb.
3. Nile green-nylon-rayon \$3.50 per lb.

### MORE ABOUT THIS FABRIC:

First of all, I think it wise if you use a temple or stretcher on this fabric. Because it is 10 threads per inch, is fairly sheet, as compared to many fabrics, it wove down from 40" on the loom to 36" when off the loom, and that was even with the use of a stretcher or temple.

And one more thing I might mention is that I do feel that this would have been a better fabric if it had been sett at 12 per inch instead of 10 per inch.

And on this fabric, I should mention that a different beat was used on different sections of the weaving. On the two blocks or on the blocks controlled by harnesses 3 and 4, and 1 and 2, a light even beat was used. On the 5,6 treadles, a firm double beat was used. With such a open or wide sett of the warp, and the extra smooth warp threads, it was hard to keep the weft from slipping, and packing in spots. I really do think that if the slubbier nylon and rayon combination had been used in the warp, and the spun viscose in the weft, that this would not have been a problem. Anyhow, you do learn from doing, so I hope that these hints are an aid to you.

There is no need to use two warp beams on this project, even though you have two slippery threads in the warp. They both weave up approximately the same.

This type of a fabric is a fun fabric to weave, and as you decide and work on one set-up, I'm sure that you will be able to think out and see your problems in terms of threads and weaves used, and how you can improve it, the next time you weave something similar.

### IDEA FOR THIS SAMPLE:

In March, 1970, we used a somewhat similar draft, with different threads, and this inspired one of our subscribers, Florence Drucker, of Los Angeles, California to weave a sample in shades of natural and beiges. She sent a sample of her drapery to us, and in turn, I began to think of the possibilities with some of the colored threads in stock here, and this is what came out of her inspiration to us.



# drafts and designs

*a guide for 5 to 12 harness weaves*

VOLUME 14. Number 8. April, 1972.

SUMMER AND WINTER FUN:

This 10 harness Summer and Winter weave is a most interesting one, and makes an excellent upholstery fabric. And it is exciting the way one of the rayon tweed yarns works in this.

WARP:

Our warp was a color in the size 20/2 Egyptian Cotton, called Aztec.

WEFT:

- Two threads were used in the weft.
- A. Tabby--20/2 Egy. Cotton, Old Gold
- B. Slubby rayon tweed yarn, pink shades

REED USED:

A 15 dent reed was used, and it was double sleyed, 2 ends per dent, or 30 threads per inch.

SOURCE OF IDEA FOR THIS PATTERN. To show you how long I hoard ideas and samples, this pattern was given to us in 1960 by Margaret Kimberly Smith of Doylestown, Pennsylvania. Hope that you will like the sample as much as I do.



THREADING DRAFT:

10	X X X X
9	X X X X
8	X X X X
7	X X X X
6	X X X X
5	X X X X
4	X X X X
3	X X X X
2	X X X X X X X X X X X X X X X X
1	X X X X X X X X X X X X X X X X

PROFILE DRAFT:

10	XX
9	XX
8	XX
7	XX
6	XX
5	XX
4	XX
3	XX
2	
1	

## DRAFTS AND DESIGNS

Published monthly (except July and August) by Robin & Russ Handweavers, 533 N. Adams St., McMinnville, Oregon.

SUBSCRIPTIONS: \$5.00 per year. Back issues or single copies, 50¢ each. Yearly subscriptions start with the September issue. If you subscribe after September, back issues from then on will be mailed to you, unless you specify that you want your subscription to start with the next September issue.

VOLUME 14, Number 8, April, 1972

### TIE-UP DRAFT

10		X	X							X		
9			X			X				X		
8					X		X			X		
7	X			X						X		
6				X			X			X		
5			X		X					X		
4		X				X				X		
3	X						X			X		
2								X			X	
1								X	X			
	1	2	3	4	5	6	7	8	A	X	B	Y

### MORE ABOUT THE FABRIC:

First of all, you want to use a firm, tight, even double beat. Particularly you use a firm even double beat when the pattern thread, the slub rayon tweed is thicker than usual, you should use a firm even double beat all the time.

When weaving this piece with this tie-up, the pattern appears on the underside, and the float threads all appear on top. It is done this way because you have much less weight to lift in your treadling. On most of the treadles, you have to lift only 2 harnesses, instead of 6 or 8 as you would have to do, if the tie-up were made so that pattern weaves on the top.

This piece is easier to weave than one would think to look at the sample. The tie-down treadles have been rearranged to make for easier treadling, so you use them AXBY sequence, and it is easier to keep track of the pattern.

Also, please note that on every other shot, you use two treadles instead of one. If you can remember this, it will make for much easier weaving on your part. If you have 10 harnesses, try this one, and I'm sure that you will like it.

### COST OF THREADS USED:

- 20/2 egyptian cotton, on 1/2 lb. cones, 8400 yds. / lb. \$7.00 lb.
- Variegated pink rayon slub, is \$3.50 per lb.

COST OF THE FABRIC: A 9 yard warp, 40" wide takes 1 lb. 4 oz. of 20/2 Aztec Egy. Cotton. Thus, our 9 yards of warp would cost \$8.75, or the cost per yard is 98¢ per yard.

In the weft, of 7-1/3 yards, you use 4 lbs. of pattern thread, and 9 oz. of 20/2 Old Gold, Egyptian cotton. Total weft cost is \$14.44, or the cost per yard was approximately \$2.00 per yard.

WARP COST PER YARD, 40" width---- .98

WEFT COST PER YARD, 39" width---- 2.06

FABRIC COST PER YARD----- \$ 3.04

### TREADLING SEQUENCE:

For this summer and winter weave, you treadle in a block sequence, 4 shots to each block, and you have 2 repeats of every block, so you have 8 shots in one block before you move on to the next. And you notice that we have 8 pattern treadles, and each one of them is a portion of each block.

Here is the treadling for the 1st and 2nd blocks, and then you continue on in the block sequence listed below.

- Treadle # A--- tabby, 20/2 old gold
  - Treadle #1 plus X, pink novelty
  - Treadle # B--- tabby, 20/2 old gold
  - Treadle #1 plus Y, pink novelty
- REPEAT THESE 4 THREADS 2 TIMES FOR THE FIRST BLOCK,

- Treadle # A--- tabby, 20/2 old gold
  - Treadle # 2 plus X, pink novelty
  - Treadle # B--- tabby, 20/2 old gold
  - Treadle # 2 plus Y, pink novelty
- REPEAT # 9 through 12, two times, so that the 2nd block has been repeated twice. The third block will be A, 3 plus X, B, 3 plus Y, repeated 2 times. Continue until you have used all the pattern treadles in the block sequence as listed below.
- BLOCK SEQUENCE 1, 2, 3, 4, 5, 6, 7, 4, 3, 8. Each block is repeated twice for 8 thds. THUS YOU WILL HAVE 80 SHOTS, 40 of tabby and 40 of pattern in each complete pattern repeat.

- 1st block-- A, 1 & X, B, 1 & Y.
- 2nd block-- A, 2 & X, B, 2 & Y.
- 3rd block-- A, 3 & X, B, 3 & Y.
- 4th block-- A, 4 & X, B, 4 & Y.
- 5th block-- A, 5 & X, B, 5 & Y.
- 6th block-- A, 6 & X, B, 6 & Y.
- 7th block-- A, 7 & X, B, 7 & Y.
- 8th block-- A, 8 & X, B, 8 & Y.



# drafts and designs

*a guide for 5 to 12 harness weaves*

VOLUME 14, Number 9.

May, 1972

## A FANCY TWILL IN 12 HARNESSES

Made of camel hair, and 2/18's worsted, I hope that you'll like this month's sample as much as I do.

### WARP:

Two threads are used in the warp. One is the fine camel's hair yarn which I have imported from England. And the other thread is color # 16, Dark Brown 2/18's worsted, which is imported from England.

### WEFT:

The same two threads that were used in the warp are also used as the weft in this fabric.

### REED USED:

A 15 dent reed was used, and it was double sleyed, 2 ends per dent, or 30 threads per inch.



### THREADING DRAFT:

12	0											
11		0										
10			0									
9				0								
8					0							
7						0						
6							X					
5								X				
4									X			
3										X		
2											X	
1												X

### TIE-UP DRAFT:

12		0		0		0		0	0	0	0	0	0
11	0		0		0				0	0	0		
10		0		0		0				0			
9	0		0		0				0				
8		0		0		0		0	0	0			
7	0		0		0		0	0	0	0	0		
6		0	0	0	0	0		0		0		0	
5			0	0	0		0		0		0		
4				0			0		0		0		
3			0				0		0		0		
2		0	0	0				0		0		0	
1	0	0	0	0	0			0	0		0		

1 2 3 4 5 6 7 8 9 10 11 12



## DRAFTS AND DESIGNS

Published monthly (except July and August) by Robin & Russ Handweavers, 533 N. Adams St., McMinnville, Oregon.

SUBSCRIPTIONS: \$5.00 per year. Back issues or single copies, 50¢ each. Yearly subscriptions start with the September issue. If you subscribe after September, back issues from then on will be mailed to you, unless you specify that you want your subscription to start with the next September issue.

VOLUME 14, Number 9. May, 1972

### KEY TO COLORS IN THE WARP:

O--- fine, natural color, camel hair  
X--- color # 16, Dk. Brown 2/18's

### WIDTH AND LENGTH OF WARP:

The warp was 40-2/3" wide, and it was 9 yards in length. From this 9 yards, there was 7½ yards of fabric before it was washed and pressed.

### TREADLING SEQUENCE

There are 12 shots in the weft, in one complete repeat of the pattern. Here is the sequence.

Treadle # 1 -- natural Camel hair  
Treadle # 2 -- natural Camel hair  
Treadle # 3 -- natural Camel hair  
Treadle # 4 -- natural Camel hair  
Treadle # 5 -- natural Camel hair  
Treadle # 6 -- natural Camel hair  
Treadle # 7 -- 2/18's, Dark Brown  
Treadle # 8 -- 2/18's, Dark Brown  
Treadle # 9 -- 2/18's, Dark Brown  
Treadle # 10 -- 2/18's, Dark Brown  
Treadle # 11 -- 2/18's, Dark Brown  
Treadle # 12 -- 2/18's, Dark Brown

End of one complete pattern repeat. You repeat over and over as desired.

### MORE ABOUT THE FABRIC:

One thing that is very helpful in the weaving of this fabric is the use of a temple or stretcher. Because it is a 12 harness straight twill, there is a tendency to pull in more on the edges than on some 12 harness fabrics, and the temple or stretcher is of help, in stopping the edge threads from fuzzing, fraying, and then breaking. Almost a must, to my way of thinking.

And, while the camel's hair seems quite strong on the cone, it actually isn't that strong, and several times in the weaving of this piece, it would actually slip apart. So, you do have to be careful in the weaving of this fabric.

And, while it seems like I say it all the time, the method of beating is quite important. Open the shed, beat lightly, and change to the next shed, and beat

lightly again. This method of beating gives less strain and wear and tear on troublesome warp threads than any other method of beating or weaving.

This pattern is shown in a rich fabric in a large fabric store, and from a sample, it was drawn down, and then woven. But, if you check carefully in the book, THE HANDBOOK OF WEAVES, by Oesner and Dale, you will find this pattern on page # 372. However, this was not found, until after the fabric had been analyzed, drawn down, and then woven.

I might also mention that there was a good bit of shrinkage in this fabric when it was washed and pressed, but I'm sorry to say, I did not think to measure how much shrinkage in width and length there was, or I would be reporting it here.

Anyhow, if you do a similar fabric, be sure to allow enough for loss in both width and length in shrinkage.

FEEL THE FABRIC. Feel how soft and how pleasing to the touch it is. This is the camel's hair yarn that makes it so pleasing. We are selling this yarn (Camel's Hair) at about 1/2 of what the regular market price is. The reason is that it is a small odd lot that I was able to locate last summer in England.

### COST OF THE THREADS USED:

We have a limited amount of the Camel's Hair yarn. About 40 lbs. left. It has come to us on about 1-1/4 to 1-1/2 lb. cones, and it is \$6.00 per lb. The yardage on this single ply thread is approximately 3600 yards per lb.

The 2/18's worsted in dark brown has 4800 yards per lb., comes to us from England on approximately 1/2 lb. cones, and is \$6.80 per lb. It is available in 39 colors.

### COST OF THE FABRIC:

In our 9 yard warp, 40-2/3" wide, it took 1 lb. 6 oz. of the Camel's Hair Yarn, and it took 1 lb. 1 oz. of the 2/18's worsted yarn. Thus, the total warp cost was \$15.48, or the cost per yard for the warp was \$1.72.

There was 7½ yards of finished fabric left, after it was taken off the loom, and allowed to sit a few days before measuring. In the weft, there was used in this 7-1/2 yards of fabric, 13 oz. of Camel's Hair Yarn, and 11 oz. of 2/18's worsted in the dark brown. Thus, the total weft cost for 7½ yards was \$9.58 or the cost per yard was \$1.28 per yard.

WARP COST PER YARD, 40-2/3" WIDE	\$1.72
WEFT COST PER YARD-----	1.28
<u>COST PER YARD, FINISHED FABRIC---</u>	<u>\$3.00</u>





# drafts and designs

*a guide for 5 to 12 harness weaves*

VOLUME 14, Number 10, June, 1972

HOT DAYS OF AUGUST:

This month, we feature an eight harness M's and O's pattern, which should work well in tailored skirts and suits, and it would be practical for light weight suit or coat material.

TIE-UP DRAFT:

8		X		X		X
7	X		X		X	
6	X		X			X
5		X		X	X	
4	X			X	X	
3		X	X			X
2		X	X		X	
1	X			X		X
	1	2	3	4	5	6

WARP:

Our warp was 2/18's worsted, in color # 2, Dark Avocado.

WEFT:

Our weft was 2/18's worsted, in color # 5, Forest Green.

THREADING DRAFT:

8			X	X		X	X		X	X		X	X
7	X	X			X	X		X	X		X	X	
6												X	X
5									X	X			
4			X	X				X	X				
3	X	X						X	X				
2					X	X							
1			X	X									



REED USED:

A 15 dent reed was used, and it was double sleyed, 2 ends per dent, or 30 threads per inch.

## DRAFTS AND DESIGNS

Published monthly (except July and August) by Robin & Russ Handweavers, 533 N. Adams St., McMinnville, Oregon.

SUBSCRIPTIONS: \$5.00 per year. Back issues or single copies, 50¢ each. Yearly subscriptions start with the September issue. If you subscribe after September, back issues from then on will be mailed to you, unless you specify that you want your subscription to start with the next September issue.

VOLUME 14, Number 10, June, 1972

## WARP WIDTH AND LENGTH

Our warp was 42" wide in the reed, plus 4 threads of dark green fine nylon for selvage on each edge. It was a 9 yard warp, and from the 9 yards, there was 8 yards of finished fabric.

## TREADLING SEQUENCE:

Only one color of 2/18's worsted, Forest Green was used in the weft, so it was fairly fast treadling and weaving. Here is the treadling sequence for the 3 blocks of M's and O's that we have in our sample.

1. Treadle # 1, one shot
2. Treadle # 2, one shot
3. Treadle # 1, one shot
4. Treadle # 2, one shot
5. Treadle # 1, one shot
6. Treadle # 2, one shot
7. Treadle # 3, one shot
8. Treadle # 4, one shot
9. Treadle # 3, one shot
10. Treadle # 4, one shot
11. Treadle # 3, one shot
12. Treadle # 4, one shot
13. Treadle # 5, one shot
14. Treadle # 6, one shot
15. Treadle # 5, one shot
16. Treadle # 6, one shot
17. Treadle # 5, one shot
18. Treadle # 6, one shot
19. Treadle # 3, one shot
20. Treadle # 4, one shot
21. Treadle # 3, one shot
22. Treadle # 4, one shot
23. Treadle # 3, one shot
24. Treadle # 4, one shot

REPEAT OVER AND OVER FROM THE BEGINNING.

On the last repeat of your weaving, you will treadle 1,2,1,2,1,2 to balance your pattern and make a complete diamond.

## MORE ABOUT THIS FABRIC:

First of all, we used some 18/3 nylon stitching twine for selvage, and this helps keep the wool from weaving narrower.

Secondly, a temple or stretcher was

used for the entire fabric, and it was stuck in the 2 nylon selvages each time it was moved, and thus, there was no undue strain on the english worsted yarn.

The nylon is very strong, and seems to be quite elastic, and if you have it on either a separate beam or on a spool or two and hanging over the back beam without being wound on the warp beam, it seems to weave in and stretch and give along with the wool, and it creates no problems in the weaving.

Also, when set-up full width on the loom, we found that 6 shots of each of the three units in the treadling, instead of 8 shots in the treadling of each unit, made for a more uniform and even diamond. So, we cut the treadling of each unit down from 8 to 6 threads, and found it quite pleasing.

In reality, this is a linen weave that is best woven in singles linen, but we do find that these sometimes work very well in fine wool and cotton. We find this to be especially true with a close sett of the warp, rather than a coarse, open sett. We did an original sample in the 10/1 white linen, and then in the wool, and decided that the wool made a much more usable and also distinctive fabric.

There were no major problems with the weaving of this fabric, with no warp breakage. I can truthfully say that I did not choose the most outstanding color combination to show the beauty of this weave, and probably the sample would have been more inspiring if we had washed and pressed it, as we normally would.

## COST OF THE FABRIC:

In the 9 yard warp, 42" wide, there was used 2 lbs. 4 oz. of the dark avocado. At \$6.80 per lb., the warp cost thus comes to \$15.30 or the cost per yard was \$1.70.

In the 8 yards of finished fabric, it took 1 lb. 6 oz. of the 2/18's worsted in the forest green color. Thus the weft cost for 8 yards was \$9.35, or the cost per yard was \$1.17 per yard.

WARP COST PER YARD-----	\$ 1.70
WEFT COST PER YARD-----	\$ 1.17
FABRIC COST PER YARD-----	\$ 2.87

Of course this is a close cost, but not exact, because of the one yard loss in the warp. I could divide the 9 yard total warp cost by 8 instead of 9, and thus get an exact cost, but some might not understand this. However, the figures are quite close, so I don't think any problems would result.