

drafts and designs

a guide for 5 to 12 harness weaves

Volume 16, Number 1. September 1973

OCTOBERFEST

There is a harvest festival in a town near here with lots of food and lots of Polka music. It is a gay party, the Octoberfest. This fabric is a festival of fall colors in an eight harness twill.

WARP:

Five colors are used. Four of them are 2/18s worsted. The fifth yarn is golden-orange and a very soft 2 ply of lamb's wool, angora and nylon.

- X -- Light Yellow 2/18s worsted
- O -- Orange-gold lamb's wool, etc.
- A -- Light Avocado 2/18s worsted
- B -- Laquer Red 2/18s worsted
- C -- Dark Avocado 2/18s worsted

WEFT:

The same five yarns are used for the weft.

REED USED:

A 15 dent reed was used. It was double sleyed, two ends per dent or 30 threads per inch.

TIE-UP DRAFT:

8		0		0		0		
7	0		0		0			
6		0		0				0
5	0		0				0	
4		0				0		0
3	0			0		0		
2			0		0		0	
1			0		0		0	
	1	2	3	4	5	6	7	8



TREADLING SEQUENCE:

The sequence is a plain twill for 8 treadles. Each color has four consecutive shots, then the color is changed. There are 40 shots to make a complete repeat.

DRAFTS AND DESIGNS

Published monthly (except July and August) by Robin & Russ Handweavers, 533 N. Adams St., McMinnville, Oregon.

SUBSCRIPTIONS: \$5.00 per year. Back issues or single copies, 50¢ each. Yearly subscriptions start with the September issue. If you subscribe after September, back issues from then on will be mailed to you, unless you specify that you want your subscription to start with the next September issue.

Volume 16, Number 1. September 1973.

1. Treadle #1 Dark Avocado 2/18s worsted
 2. Treadle #2 Dark Avocado 2/18s worsted
 3. Treadle #3 Dark Avocado 2/18s worsted
 4. Treadle #4 Dark Avocado 2/18s worsted
 5. Treadle #5 Laquer Red 2/18s worsted
 6. Treadle #6 Laquer Red 2/18s worsted
 7. Treadle #7 Laquer Red 2/18s worsted
 8. Treadle #8 Laquer Red 2/18s worsted
 9. Treadle #1 Light Avocado 2/18s worsted
 10. Treadle #2 Light Avocado 2/18s worsted
 11. Treadle #3 Light Avocado 2/18s worsted
 12. Treadle #4 Light Avocado 2/18s worsted
 13. Treadle #5 Golden Orange lamb's wool etc.
 14. Treadle #6 Golden Orange lamb's wool etc.
 15. Treadle #7 Golden Orange lamb's wool etc.
 16. Treadle #8 Golden Orange lamb's wool etc.
 17. Treadle #1 Light Yellow 2/18s worsted
 18. Treadle #2 Light Yellow 2/18s worsted
 19. Treadle #3 Light Yellow 2/18s worsted
 20. Treadle #4 Light Yellow 2/18s worsted
 21. Treadle #5 Dark Avocado 2/18s worsted
 22. Treadle #6 Dark Avocado 2/18s worsted
 23. Treadle #7 Dark Avocado 2/18s worsted
 24. Treadle #8 Dark Avocado 2/18s worsted
 25. Treadle #1 Laquer Red 2/18s worsted
 26. Treadle #2 Laquer Red 2/18s worsted
 27. Treadle #3 Laquer Red 2/18s worsted
 28. Treadle #4 Laquer Red 2/18s worsted
 29. Treadle #5 Light Avocado 2/18s worsted
 30. Treadle #6 Light Avocado 2/18s worsted
 31. Treadle #7 Light Avocado 2/18s worsted
 32. Treadle #8 Light Avocado 2/18s worsted
 33. Treadle #1 Golden Orange lamb's wool etc.
 34. Treadle #2 Golden Orange lamb's wool etc.
 35. Treadle #3 Golden Orange lamb's wool etc.
 36. Treadle #4 Golden Orange lamb's wool etc.
 37. Treadle #5 Light Yellow 2/18s worsted
 38. Treadle #6 Light Yellow 2/18s worsted
 39. Treadle #7 Light Yellow 2/18s worsted
 40. Treadle #8 Light Yellow 2/18s worsted
- END OF COMPLETE PATTERN REPEAT.
Repeat over and over as desired.

THREADING DRAFT:

8	X	A	C	O	B	
7	X	A	C	O	B	
6	X	A	C	O	B	
5	X	A	C	O	B	
4		O	B	X	A	C
3		O	B	X	A	C
2		O	B	X	A	C
1		O	B	X	A	C

MORE ABOUT THIS FABRIC:

This fabric was easy to weave except for the five shuttles. If you plan your shuttle position and never change, you will automatically pick up the right one in sequence without looking after awhile.

We used harnesses #9 and #10 to make a plain weave selvage using 10/2 cotton, eight threads for each selvage. This will make a stronger selvage and avoid pulling by some threads due to the twill. The cotton selvage also makes a better anchor for a temple which was used while weaving this fabric.

We put 40 ends of warp (one complete pattern) in each 1" section, and we skipped every third section. Thus we warped sections with 40 threads in each section.

COST OF THE FABRIC:

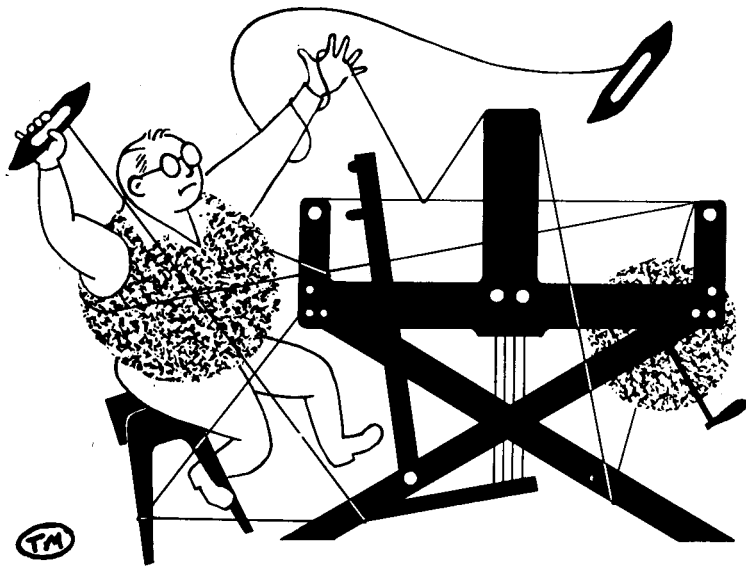
We wove from a 12 yard warp 40" wide less the 16 cotton threads for the selvage.

We used 9 oz. of each of the colors of 2/18s worsted for a total of 2 lb. 4 oz. in the warp. It now sells for \$9.60 per pound for \$21.60 in the warp. There are 4800 yards per pound in 2/18s worsted. The lamb's wool, angora and nylon has 3600 yards per pound and sells for \$4.00 per pound. We used 12 oz. in the warp for a cost of \$3.00. The total cost of the warp is \$24.60.

In the weft we used 5½ oz. of each of the 2/18s worsted colors totalling 1 lb. 5 oz. and \$12.60. We used 7½ oz. of the lamb's wool, angora and nylon which cost \$1.88. The cost of the weft was \$14.48.

WARP COST PER YARD, 40" wide -- \$2.05
WEFT COST PER YARD, 10 yd 20" -- \$1.31
FABRIC COST PER YARD ----- \$3.35

CORRECTION IN June 1973 Drafts and Design Treadling should be: 1,2,3,4,5,6 in light gray alpaca and then treadle #7,8,9,10, 11,12 in dark gray alpaca.



drafts and designs

a guide for 5 to 12 harness weaves

Volume 16, Number 2, October 1973

AZTEC AMBLINGS

This fabric has repeated the clear, geometric shapes of Aztec pyramids in South America. This is a 6 harness fabric that would make a beautiful spring coat. It would also be excellent as a bed spread or decorative fabric such as for pillows.

WARP:

Two yarns were used for this fabric:
2 ply natural Tussah silk with wool flecks
2 ply English tapestry worsted in white

WEFT:

The same two yarns were used for weft.

REED USED:

A 6 dent reed was used and it was double and triple sleyed. Two silk threads were sleyed in the first dent, then two silk threads and one wool yarn were sleyed together in the next dent. Then this method is repeated over and over.

An 8 dent reed was tried at first, but the fabric was too stiff and hard.

TIE-UP DRAFT:

6		0		0		0
5	0		0		0	
4			0	0		0
3	0	0				0
2			0	0	0	
1	0	0				0
	1	2	3	4	5	6



Threading Draft:

6		A		A		A		A		A
5	A			A				A		
4	X X			X X				X X		X X
3		X X			X X				X X	
2			X X			X X			X X	X X
1				X X			X X			X X

All threads (A) on # 5 and 6 are wool pattern threads. Silk background threads (X) are on harnesses 1, 2, 3, 4.

DRAFTS AND DESIGNS

Published monthly (except July and August) by Robin & Russ Handweavers, 533 N. Adams St., McMinnville, Oregon.

SUBSCRIPTIONS: \$5.00 per year. Back issues or single copies, 50¢ each. Yearly subscriptions start with the September issue. If you subscribe after September, back issues from then on will be mailed to you, unless you specify that you want your subscription to start with the next September issue.

Volume 16, Number 2, October 1973

Denting:

Sley the reed so that you have 2 threads in the first dent, then 3 threads in the second dent and repeat 2, 3, 2, 3, across the reed. The white wool pattern is every fifth thread. For instance the silk threads from harness 1 and 2 go together in the first dent. The silk threads from the next harness 1 and 2 plus the white wool thread from harness 5 are sleyed in the second dent. This is repeated.

Treadling Sequence:

Every 5th shot is white wool pattern yarn. There are 30 shots per pattern repeat.

1. Treadle #1 -- Tussah silk
2. Treadle #3 -- Tussah silk
3. Treadle #1 -- Tussah silk
4. Treadle #3 -- Tussah silk
5. Treadle #5 -- white tapestry wool
6. Treadle #2 -- Tussah silk
7. Treadle #4 -- Tussah silk
8. Treadle #2 -- Tussah silk
9. Treadle #4 -- Tussah silk
10. Treadle #6 -- white tapestry wool
11. Treadle #1 -- Tussah silk
12. Treadle #3 -- Tussah silk
13. Treadle #1 -- Tussah silk
14. Treadle #3 -- Tussah silk
15. Treadle #6 -- white tapestry wool
16. Treadle #2 -- Tussah silk
17. Treadle #4 -- Tussah silk
18. Treadle #2 -- Tussah silk
19. Treadle #4 -- Tussah silk
20. Treadle #5 -- white tapestry wool
21. Treadle #1 -- Tussah silk
22. Treadle #3 -- Tussah silk
23. Treadle #1 -- Tussah silk
24. Treadle #3 -- Tussah silk
25. Treadle #6 -- white tapestry wool
26. Treadle #2 -- Tussah silk
27. Treadle #4 -- Tussah silk
28. Treadle #2 -- Tussah silk
29. Treadle #4 -- Tussah silk

30. Treadle #6 -- white tapestry wool
END OF ONE COMPLETE PATTERN REPEAT
Repeat over and over as desired.

MORE ABOUT THE THREADS USED:

The main warp thread and also background thread is a 2 ply tussah silk with a black fleck. This is the natural silk, and the black fleck is actually a black wool nub spun with the silk. It has about 1600 yards per lb., is imported from England, and is \$6.00 per lb. It comes on cones of about 12 to 16 oz.

The white pattern thread is a 2 ply worsted yarn, also imported from England. It is sometimes called a tapestry yarn, and sometimes called a rug yarn. It comes on approximately 4 oz. tubes, with approximately 175 yards per tube. We have this in 42 colors, and it sells for \$1.75 per tube.

COST OF THE FABRIC:

We had a 12 yard warp, 40" wide, and it took 3 lbs. 5 oz. of the tussah silk, and 7½ tubes of the 2 ply white worsted. The total warp cost was \$33.00 or the cost per yard was \$2.75. In the weft, we had 9½ yards of fabric, and it took \$26.25 in the weft. Thus the weft cost per yard was \$2.77 per yard.

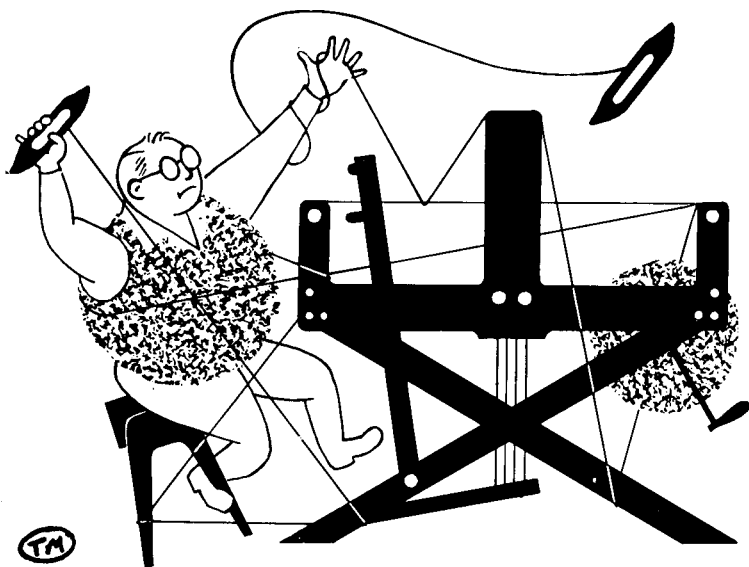
WARP COST PER YARD-----	\$ 2.75
<u>WEFT COST PER YARD-----</u>	<u>2.77</u>
Fabric cost per yard-----	\$ 5.52

MORE ABOUT THE FABRIC:

It would be easier to weave this if you have two warp beams, one for the silk, and the other for the wool. However, if you do not have two warp beams, you can take a heavy lease stick, slide it under the heavier wool threads right behind the harnesses, and then slide this stick back and down, until it is at the bottom of the warp beam. Then put a weight at each end and the middle of this stick, and then as you weave, it will keep a tight tension on the wool, as well as the silk. When finished with the 9½ yards of weft, we found that the wool was 17" longer than the silk that was left.

Use a medium, double beat, beating first with the shed open, changing to the next shed, and then beating again before throwing the shuttle.

There were no problems in weaving this, no breakage of warp, and so, it is a quite easy fabric to weave.



drafts and designs

a guide for 5 to 12 harness weaves

Volume 16, Number 3, November 1973

TUSSAH, TUSSAH, TUSSAH

This eight harness twill fabric is made of tussah silk in a natural color, and a creamy white silk and rayon combination.

THREADING DRAFT:

8			0	0	0
7			0	0	0
6			0	0	0
5			0	0	0
4	X	X	X		
3	X	X	X		
2	X	X	X		
1	X	X	X		

TIE-UP DRAFT:

8		0			0	
7				0	0	
6			0		0	
5	0				0	
4			0	0	0	
3		0	0		0	
2	0	0			0	
1	0			0	0	
	1	2	3	4	5	6

WARP THREAD USED:

There are two threads used in the warp. One of these is a natural, 2 ply, tussah silk with black flecks used for 12 ends. The other is the same tussah silk with black fleck mixed with a shiny, creamy, smooth silk and rayon combination thread.

X--natural tussah silk with white twist of silk and rayon.

O--natural tussah silk with black fleck.



WEFT THREADS USED:

The same two threads that are used in the warp, are also used in the weft.

REED USED:

An 8 dent reed was used, and it was double sleyed, or two ends per dent. The silk tussah with the white twisted around it was counted as just one thread. So actually our warp was 16 ends per inch.

TREADLING SEQUENCE:

There are 24 shots in one complete pattern repeat. 12 shots are with the tussah silk by itself, and then there are 12 shots

DRAFTS AND DESIGNS

Published monthly (except July and August) by Robin & Russ Handweavers, 533 N. Adams St., McMinnville, Oregon.

SUBSCRIPTIONS: \$5.00 per year. Back issues or single copies, 50¢ each. Yearly subscriptions start with the September issue. If you subscribe after September, back issues from then on will be mailed to you, unless you specify that you want your subscription to start with the next September issue.

Volume 16, Number 3, November 1973

with the tussah silk twisted with the white silk and rayon.

1. Treadle # 1, Tussah silk with black fleck
2. Treadle # 2, Tussah silk with black fleck
3. Treadle # 3, Tussah silk with black fleck
4. Treadle # 4, Tussah silk with black fleck
5. Treadle # 1, Tussah silk with black fleck
6. Treadle # 2, Tussah silk with black fleck
7. Treadle # 3, Tussah silk with black fleck
8. Treadle # 4, Tussah silk with black fleck
9. Treadle # 1, Tussah silk with black fleck
10. Treadle # 2, Tussah silk with black fleck
11. Treadle # 3, Tussah silk with black fleck
12. Treadle # 4, Tussah silk with black fleck
13. Treadle # 5, Tussah silk with white twist
14. Treadle # 6, Tussah silk with white twist
15. Treadle # 5, Tussah silk with white twist
16. Treadle # 6, Tussah silk with white twist
17. Treadle # 5, Tussah silk with white twist
18. Treadle # 6, Tussah silk with white twist
19. Treadle # 5, Tussah silk with white twist
20. Treadle # 6, Tussah silk with white twist
21. Treadle # 5, Tussah silk with white twist
22. Treadle # 6, Tussah silk with white twist
23. Treadle # 5, Tussah silk with white twist
24. Treadle # 6, Tussah silk with white twist

END OF ONE COMPLETE PATTERN REPEAT. Repeat over and over as desired.

COST OF THE THREADS USED:

The fine, white, smooth, silk and rayon combination in creamy white has 10,400 yards per lb. It comes on about 1 lb. and 12 oz. cones, and is \$8.00 per lb. We can also wind off 4 oz. tubes of this for you if you wish, at \$2.50 per 4 oz. tube.

The heavy 2 ply tussah silk with the black fleck is the natural colored tussah silk. It has 1600 yards per lb., and is \$6.00 per lb., and comes on approximately 1 lb. cones.

COST OF THE FABRIC:

We did a 13 yard warp, 40" wide, and it took 4 lbs. 11 oz. of the Tussah silk with black fleck, and it took 7 oz. of the fine, white, smooth, silk and rayon.

Thus, the total warp cost for 13 yards was \$31.63, or the cost per yard, for 40" wide material for warp was \$2.44

In the weft, we finished up with 11½ yards of finished fabric from the 13 yard warp. In the weft, we used 2 lbs. 10 oz. of the tussah silk with black fleck, and 4 oz. of the fine, smooth, white, silk and rayon combination. Thus, the total weft cost for 11½ yards was \$17.75, or the cost per yard was \$1.55 per yard.

WARP COST PER YARD:----- \$ 2.44
WEFT COST PER YARD:----- \$ 1.55

FABRIC COST PER YARD-----\$ 3.99

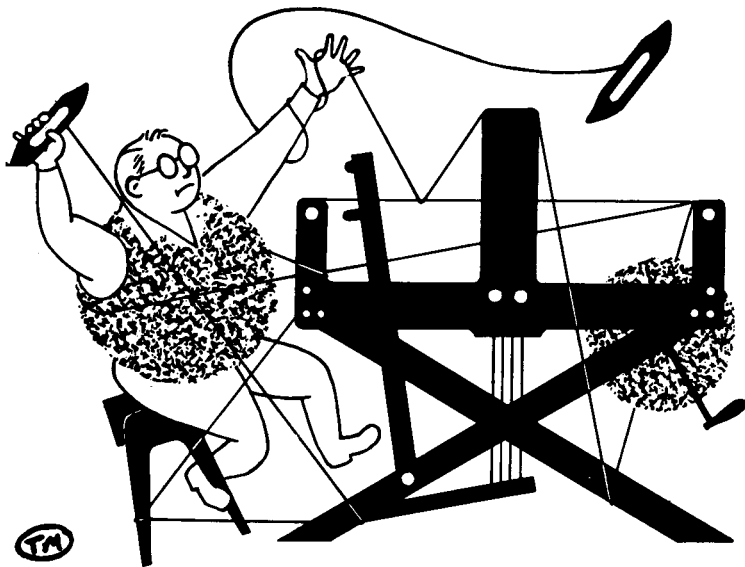
MORE ABOUT THE FABRIC:

We thought that we would have some trouble with the fine silk and rayon and the heavy tussah silk being twisted together, but to our surprise, we had no problem with it. We used a twisting stand, and twisted the fine white silk and rayon thread around the heavier tussah silk thread. If you do not have a twisting stand, you can easily make one out of an apple crate, as we did. You set the box on end, and drill a hole right in the center of one end of the box. Set a cone of the heavy tussah silk with black fleck in the cone, and set a cone of the fine, glossy silk and rayon right over the hole on the top when the box is up on end. Bring the heavy tussah silk through the hole, and up through the inside of the cone the fine silk and rayon is wound upon, and take both ends together as one thread, and wind on your bobbin or spool.

One IMPORTANT THING WE MUST REPORT IS that this sample has been washed and then pressed. It was washed in luke-warm water in the shortest cycle in our automatic washing machine. The water was partly extracted then we steam pressed it on one side, and your sample is the result. We found that from 11 yards and 18 inches of finished fabric off the loom, that when it was washed and pressed, we had 10 yards and 28" of fabric. Thus, in the washing, we lost 26" of fabric in the washing, so you must plan on this accordingly. It does not look very nice until it is washed and pressed as you will see.

REMEMBER, WASH AND PRESS, AND ALLOW FOR SHRINKAGE IN THE WASHING.

In weaving the 13 yard warp, we had no broken ends in either the warp or weft.



drafts and designs

a guide for 5 to 12 harness weaves

Volume 16, Number 4, December, 1973

HOP, SKIP, AND JUMP:

This interesting 8 harness sample is woven of two weights of worsted, our new 2/12's worsted, and also with the regular stock of 2/18's. The contrast in sizes does not show up too much, but it is quite an interesting fabric.



WARP:

Two colors were used in the warp, and they were as follows:

- X--18/2 Chantilly Green Worsted
- O--12/2 Grenadier Blue Worsted

WEFT:

Two colors and two sizes of thread were also used in the weft. They were as follows:

- A--2/12's Monday Blue Worsted
- B--2/18's Dark Navy Worsted

THREADING DRAFT:

8			X	X	X						
7				X	X	X					
6	X	X	X				X	X	X		
5		X	X	X			X	X	X		
4							0	0		0	0
3							0	0		0	0
2								0	0		
1									0	0	

TIE-UP DRAFT:

8			0	0	0	0				
7			0	0	0	0				
6	0	0					0	0		
5	0	0					0	0		
4		0	0	0	0					
3	0		0	0	0					
2		0		0				0	0	
1	0		0						0	0

1 2 3 4 5 6 7 8

DRAFTS AND DESIGNS

Published monthly (except July and August) by Robin & Russ Handweavers, 533 N. Adams St., McMinnville, Oregon.

SUBSCRIPTIONS: \$5.00 per year. Back issues or single copies, 50¢ each. Yearly subscriptions start with the September issue. If you subscribe after September, back issues from then on will be mailed to you, unless you specify that you want your subscription to start with the next September issue.

Volume 16, Number 4 December, 1973

REED USED:

A 12 dent reed was used, as is indicated below.

X--18/2 Chantilly was threaded 2 per dent.

O--12/2 Grenadier Blue Worsted was threaded 3,2,3,2,3,2,3 or 18 threads in 7 dents.

Thus, you will find that we had about 27½ threads per inch in this sample.

TREADLING:

There are 30 shots in one complete treadling sequence as given below.

1. Treadle 3 -- 2/12's MONDY BLUE
2. Treadle 4 -- 2/12's MONDY BLUE
3. Treadle 3 -- 2/12's MONDY BLUE
4. Treadle 4 -- 2/12's MONDY BLUE
5. Treadle 1 -- 2/12's MONDY BLUE
6. Treadle 2 -- 2/12's MONDY BLUE
7. Treadle 1 -- 2/12's MONDY BLUE
8. Treadle 2 -- 2/12's MONDY BLUE
9. Treadle 3 -- 2/12's MONDY BLUE
10. Treadle 4 -- 2/12's MONDY BLUE
11. Treadle 3 -- 2/12's MONDY BLUE
12. Treadle 4 -- 2/12's MONDY BLUE
13. Treadle 5 -- 2/18's DARK NAVY
14. Treadle 6 -- 2/18's DARK NAVY
15. Treadle 5 -- 2/18's DARK NAVY
16. Treadle 6 -- 2/18's DARK NAVY
17. Treadle 5 -- 2/18's DARK NAVY
18. Treadle 6 -- 2/18's DARK NAVY
19. Treadle 7 -- 2/18's DARK NAVY
20. Treadle 8 -- 2/18's DARK NAVY
21. Treadle 7 -- 2/18's DARK NAVY
22. Treadle 8 -- 2/18's DARK NAVY
23. Treadle 7 -- 2/18's DARK NAVY
24. Treadle 8 -- 2/18's DARK NAVY
25. Treadle 5 -- 2/18's DARK NAVY
26. Treadle 6 -- 2/18's DARK NAVY
27. Treadle 5 -- 2/18's DARK NAVY
28. Treadle 6 -- 2/18's DARK NAVY
29. Treadle 5 -- 2/18's DARK NAVY
30. Treadle 6 -- 2/18's DARK NAVY

End of one complete pattern repeat.
Treadle over and over as desired.

MORE ABOUT THE THREADS USED:

We used two weights of thread in both the warp and weft. Our new 2/12's worsted comes in natural, white, and 8 colors so far. We might possibly have all 39 colors that we have in the 2/18's worsted also in the 2/12's, but it depends upon the wool prices and if they stay as high as they are. It is \$9.60 per lb. for both sizes, and they both come on approximately 1/2 lb. cones.

COST OF THE FABRIC:

We had a 12 yard warp, 40" wide on the loom, and from this, we received 10-¾ yards of finished fabric.

In the 12 yard warp, we used 2 lbs. 2 oz. of the Grenadier Blue 2/12's and we used 14 oz. of the Chantilly Green in the 2/18's Worsted. Thus, our warp cost was \$28.40 for 12 yards, 40" wide, or \$2.37 per yard for the warp. And in the weft, we used 1 lb. 3 oz. of both the colors and both weights of Monday Blue 2/12's and Dark Navy 2/18's.

WARP COST PER YARD, 40" WIDE---- \$ 2.37

WEFT COST PER YARD, ----- 2.12

Fabric cost per yard, 38" finished \$4.49

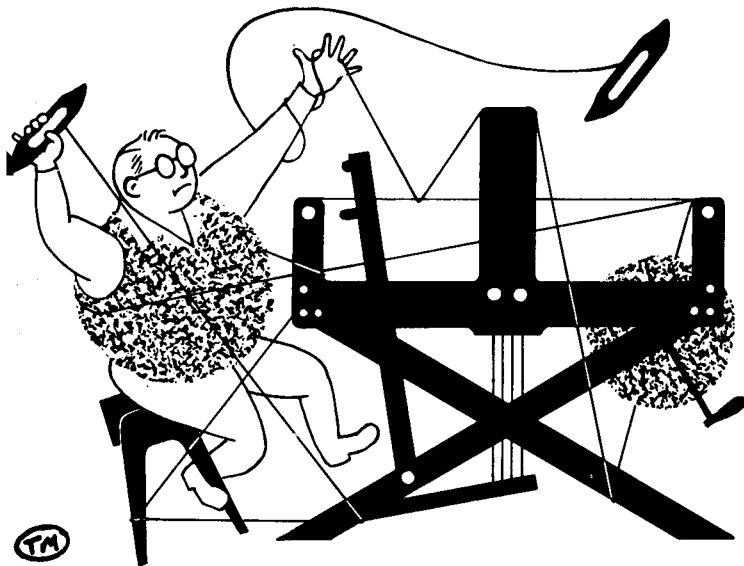
MORE ABOUT THE FABRIC:

One of the first things I want to mention is that we did use a temple or stretcher. I think you will always find the weaving easier in this weight thread if you do use a temple or stretcher.

Another thing about this pattern that I want to mention is that it is just about impossible to get a good selvage on this weave. So, we finally decided that if we had had more width in the reed, we would have put some selvage threads on harnesses 9 and 10 if you have them as we do. Because you cannot get a good selvage on this weave, we feel it is doubly important to use a temple or stretcher.

Our sample is not washed and pressed, and I think it would be more attractive if it was washed and pressed. Wash in luke-warm water, with ivory or lux and allow to drip dry. Then steam press, and you will like the feel of the resulting fabric.

There is no problem in the weaving of this fabric. So---happy weaving.



drafts and designs

a guide for 5 to 12 harness weaves

VOLUME 16, Number 5, January, 1974

BEDFORD CORD

This ribbed corduroy pattern is one that I came across in England about seven years ago, when I saw a display of weaving, by the well known English Weaver, Hilda Breed. It is a very interesting 8 harness weave.

THREADING DRAFT:

8			X	X	X
7			X	X	X
6	X	X	X		
5	X	X	X		
4			0	0	
3		0	0		
2	X			X	
1	X			X	

KEY TO THREADS IN THREADING DRAFT:

- 0-- heavy white, 2 ply nylon
- X-- 14/2 Mercerized Cotton, Venetian Red and this is a durene cotton.

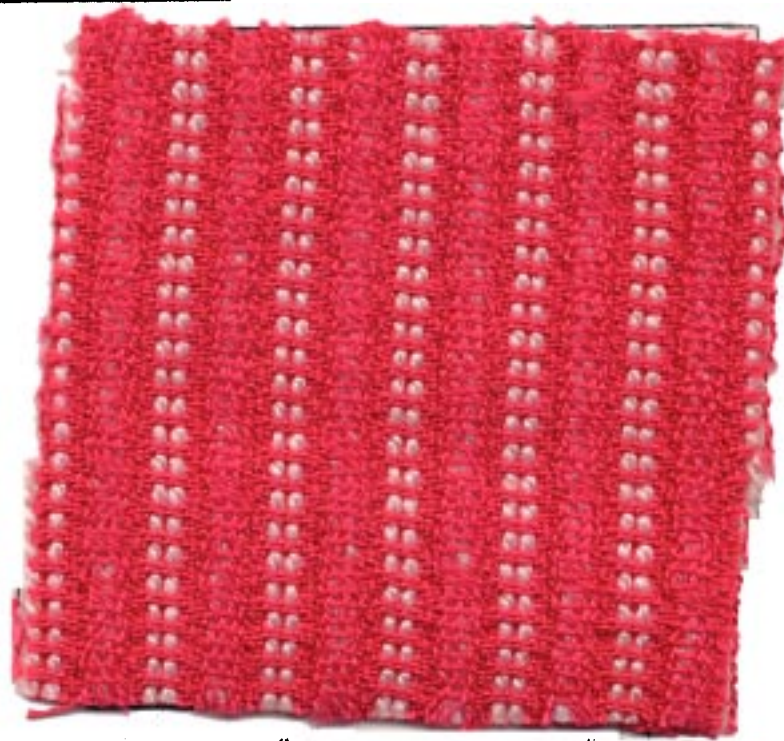
WARP:

Two threads are used in the warp. One is a size 14/2 durene, mercerized cotton in a color called Venetian Red, and it is the X thread in the threading draft.

And the other is a white, 2 ply, fairly heavy, nylon, which comes on about 1/2 lb. tubes.

WEFT:

Just one thread is used in the weft, and it was the 14/2 durene mercerized cotton in Venetian Red.



TIE-up Draft # 2

8	0	0			
7			0	0	
6		0			
5			0		
4	0			0	
3		0	0		
2			0	0	0
1	0	0	0		

1 2 3 4 5 6

TIE-UP DRAFT # 1

8		0	0	0	0
7	0	0	0	0	
6	0		0	0	0
5	0	0	0	0	0
4		0	0	0	0
3	0		0	0	0
2	0	0	0		
1				0	0

1 2 3 4 5 6

REED USED:

A 15 dent reed was used, and it was double sleyed, 2 ends per dent, or 30 threads per inch.

DRAFTS AND DESIGNS

Published monthly (except July and August) by Robin & Russ Handweavers, 533 N. Adams St., McMinnville, Oregon.

SUBSCRIPTIONS: \$5.00 per year. Back issues or single copies, 50¢ each. Yearly subscriptions start with the September issue. If you subscribe after September, back issues from then on will be mailed to you, unless you specify that you want your subscription to start with the next September issue.

VOLUME 16, Number 5, January, 1974

TREADLING SEQUENCE:

There are 6 shots in one complete pattern repeat. Here is the sequence, and please note that there are just 6 treadles used, even though it is an 8 harness weave.

1. Treadle # 3--2/14's Venetian Red
2. Treadle # 4--2/14's Venetian Red
3. Treadle # 2--2/14's Venetian Red
4. Treadle # 5--2/14's Venetian Red
5. Treadle # 1--2/14's Venetian Red
6. Treadle # 6--2/14's Venetian Red

End of one complete Pattern Repeat.

Repeat over and over as desired. Note the 2/14's Venetian Red is the durene mercerized cotton.

COST OF THE THREADS USED:

We have a limited amount of both of the threads used, and while they last, the 14/2 Venetian Red cotton is \$3.20 per lb. on about 1 lb. to 1 lb. 4 oz. cones. It has 5880 yards per lb. We also have in size 20/2 at \$3.20 per lb. a color of sunshine yellow, and still another one called ice pink, all durene cotton.

The natural white nylon comes on approximately 1/2 lb. tubes of 600 yards each, and it is \$2.40 per lb.

COST OF THE FABRIC:

We had a 13 yard warp, 40" wide, and it took 2 lbs. 3 oz. of 2/14 Venetian Red durene cotton, and 2 lbs. 4 oz. of the white nylon. Thus, our total warp cost was \$12.40 for the cotton and nylon or the cost per yard was 95¢ per yard.

In the weft, we had 10 yards and 18" of finished fabric, and it took 2 lbs. and 10 oz. of Venetian Red 2/14's. Our total weft cost was \$8.40 and the cost per yard was 80¢ per yard for the weft.

WARP COST PER YARD, 40" wide----- .95

WEFT COST PER YARD, 38" finished .80

Fabric cost per yard----- \$ 1.75

MORE ABOUT THE FABRIC:

First of all, you want to use a firm, even, double beat on this fabric, and this is important, as you want to try and cover 2 of the 4 nylon threads in each pattern repeat with the red cotton.

We found that it did not cover entirely as we had hoped, but when washed, then the washing shrank the cotton and pulled it over the nylon better. We washed it in an automatic washing machine, using the shortest cycle available. Then allow to drip dry, and press with a steam iron.

Also, in this fabric, we tried a special selvage, and had trouble beating the fabric. We eliminated the special selvage, and it did beat better. But, we felt that if we had used a slightly finer thread for the rib that is created, that we would like it better. And, it could possibly have been sett a little closer to cover the rib threads, possibly at 32 per inch. I think that at 36 per inch would have been too close.

We might suggest if you have them to use two warp beams, and if not, if you have any trouble with the tension of one of the two warp threads, to use a lease stick in the back, weighted down with weights to pull on the loose threads and keep them tight. This seemed to make it a much better fabric.

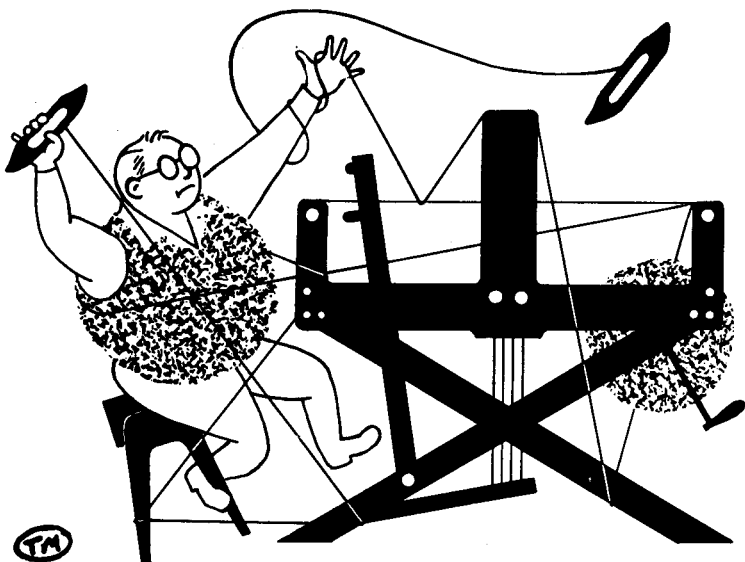
Also, because of the lack of a good selvage, we did use a temple or stretcher, and found this was a great help.

We tried it without the temple or stretcher, and had quite a few broken threads. And even with the stretcher, we had some broken threads, but not as many as without the stretcher. The reason for this problem is that there is no true selvage in this threading draft, and when we did put them on, they stopped the rest of the weft from beating in as tightly as we wanted it to.

Also, this is a low cost fabric, that we have created here, but mainly because we were able to use some odd lots of thread that we purchased at reduced prices.

NOTE ABOUT THE TIE-UP:

We have given you two different tie-ups. Tie-up # 1 weaves with the rib on the top when weaving, and then, we used tie-up # 2, as it is less lifting, and then the back side of the fabric faced us when weaving.



drafts and designs

a guide for 5 to 12 harness weaves

VOLUME 16, Number 6, February, 1974

YARROW AND SAGE

This 8 harness sample is a blend of two of the Scottish Heather yarns that are often used in weaving the Scottish District Checks.

WARP:

The warp is the single ply Scottish Heather yarn, which we have in about 20 colors. This is yarrow yellow.

WEFT:

The weft is another of the single ply Scottish heather yarns which is called Golden Blue (why I know not).

REED USED:

A 10 dent reed was used, and it was double sleyed, 2 ends per dent, or 20 threads per inch.

THREADING DRAFT:

8	X		X								
7		X		X							
6				X		X					
5				X		X					
4						X		X			
3						X		X			
2								X		X	
1									X		X



MORE ABOUT THE FABRIC:

This fabric is quite easy to weave, and as our loom has 12 harnesses, we used a 8 thread cotton selvage on harnesses 9 and 10. This made the sample much easier

to weave, and because it is a single ply wool, we did use a temple or stretcher.

With this 8 threads of cotton selvage, we were able to put the teeth in the

DRAFTS AND DESIGNS

Published monthly (except July and August)
by Robin & Russ Handweavers, 533 N. Adams
St., McMinnville, Oregon.

SUBSCRIPTIONS: \$5.00 per year. Back issues
or single copies, 50¢ each. Yearly subscrip-
tions start with the September issue. If
you subscribe after September, back issues
from then on will be mailed to you, unless
you specify that you want your subscription
to start with the next September issue.

VOLUME 16, Number 6, February, 1974

temple or stretcher into the cotton sel-
vage threads, so it does not show at all
in the finished fabric.

This yarn clings together a little, and
so you will find it best to use a medium
beat, change to the next shed, and beat
lightly again, before you throw the shuttle
again in the next shed. This eliminates
any tendency to cling together, and makes
for a firmer and more even fabric.

Also, this scottish heather yarn is spun
in oil, and after washing and steam pressing,
the oil is gone. However, if you do not
wash and press it after weaving, you will
be able to feel the oil in the yarn.

This washing and pressing also brings
the yarns together slightly, and makes a
more desirable and firm fabric.

Actually, I've wondered if I might not
have liked this better if I had sett it
in a 12 dent reed, 2 ends per dent, or
24 per inch. This would have cut down
on the width of the float threads, and
would not have taken quite as much weft
thread as this did.

MORE ABOUT THE THREADS USED:

While in Scotland, I was able to find
this lot of 20 colors we have being dis-
continued by the manufacturers, and as a
result, we have paid the shipping, the
15% duty, and the 30¢ a pound surcharge
on the wool, and are still able to sell
this yarn at \$4.00 per lb.

I might also mention that there are
about 3 sizes available, and in this
sample, our warp thread of yarrow yellow
had about 3300 yards per lb., and the
weft thread of golden blue had about
2750 yards per lb.

We also have since ordered about 1,000
lbs. of assorted small lots of various
colors of this yarn, and it will be shipped
to us about March 1, 1974, and that means
that in April, we should have about 40
assorted colors on hand. However, we will

not be able to duplicate these yarns again
at the price we are selling them for now.

We would probably have to get \$6.00 to
\$8.00 per lb., if we were to order any of
these yarns again, spun to order for us,
so this is indeed a good buy, and is one
of the benefits of my Annual trip to Eur-
ope to look for threads. This yarn does
come on cones varying in size from 1 to
1½ lbs. in size, and we prefer to sell
it only by the cone, instead of trying
to rewind it.

TIE-UP DRAFT

8		0		0			0	0	
7	0		0				0	0	
6		0		0	0	0			
5	0		0		0	0			
4			0	0		0	0		0
3			0	0	0		0		
2	0	0					0	0	
1	0	0			0		0		
	1	2	3	4	5	6	7	8	

TREADLING SEQUENCE:

1. Treadle # 1, golden blue heather
2. Treadle # 2, golden blue heather
3. Treadle # 1, golden blue heather
4. Treadle # 2, golden blue heather
5. Treadle # 3, golden blue heather
6. Treadle # 4, golden blue heather
7. Treadle # 3, golden blue heather
8. Treadle # 4, golden blue heather
9. Treadle # 5, golden blue heather
10. Treadle # 6, golden blue heather
11. Treadle # 5, golden blue heather
12. Treadle # 6, golden blue heather
13. Treadle # 7, golden blue heather
14. Treadle # 8, golden blue heather
15. Treadle # 7, golden blue heather
16. Treadle # 8, golden blue heather

END OF ONE COMPLETE PATTERN REPEAT.

Repeat over and over as desired.

COST OF THE FABRIC:

We had a 12 yard warp, 40" wide on the
loom. It took 2 lbs. 14 oz. of the
yarrow yellow color for the warp, so the
total warp cost was \$11.50, or the cost
per yard was 96¢ per yard.

In the weft, we received 10 yards and
18 inches of fabric from our 12 yard
warp. In this 10½ yards of fabric, we
used 4 lbs. of weft yarn in the golden
blue heather blend yarn. Thus, the weft
cost for 10½ yards was \$16.00, or the
cost per yard was \$1.53 per yard.

WARP COST PER YARD, 40" Wide --- .96¢
WEFT COST PER YARD, ----- 1.53

FABRIC COST PER YARD ----- \$2.49

DRAFTS AND DESIGNS

Published monthly (except July and August) by Robin & Russ Handweavers, 533 N. Adams St., McMinnville, Oregon.

SUBSCRIPTIONS: \$5.00 per year. Back issues or single copies, 50¢ each. Yearly subscriptions start with the September issue. If you subscribe after September, back issues from then on will be mailed to you, unless you specify that you want your subscription to start with the next September issue.

VOLUME 16, Number 7, March, 1974

KEY TO THREADS IN THE WARP:

X--- 20/2 Sunshine Yellow Merc. Cotton
O--- 14/2 Cotton, Venetian Red, doubled or 2 ends in one heddle.

TREADLING SEQUENCE:

As one complete pattern repeat is 99 threads (counting each doubled Venetian Red thread as one thread), it is a rather long treadling sequence. Instead of writing out the complete sequence shot by shot, we will say repeat 2 & 3 or 4 & 3 or 6 & 3 or 4 & 3, a total of 8 times until you have 16 threads.

1. Treadle # 1, 1 time, 14/2 Red, doubled
 2. Treadle # 2, 1 time, 20/2 Yellow
 3. Treadle # 3, 1 time, 20/2 Yellow
 4. through 17. Repeat treadles 2 & 3 for seven more times or a total of 16 shots of yellow 20/2 cotton.
 18. Treadle # 1, 1 time, 14/2 Red, doubled
 19. Treadle # 4, 1 time, 20/2 Yellow
 20. Treadle # 3, 1 time, 20/2 Yellow
 21. through 34. Repeat treadles 4 & 3 for seven more times or a total of 16 shots of yellow 20/2 cotton.
 35. Treadle # 5, 1 time, 14/2 Red, doubled
 36. Treadle # 6, 1 time, 20/2 Yellow
 37. Treadle # 3, 1 time, 20/2 Yellow
 38. through 51. Repeat treadles 6 & 3 for seven more times or a total of 16 shots of 20/2 yellow cotton.
 52. Treadle # 5, 1 time, 14/2 Red, doubled
 53. Treadle # 4, 1 time, 20/2 Yellow
 54. Treadle # 3, 1 time, 20/2 Yellow
 55. through 68. Repeat treadles 4 & 3 for seven more times or a total of 16 shots of yellow 20/2 cotton.
- END OF ONE COMPLETE PATTERN REPEAT. Repeat over and over as desired.

MORE ABOUT THE PATTERN:

There are two important things about this pattern that you should know, and here are the details.

First, I feel that a temple or stretcher is very helpful in weaving this fine cotton, helping keep it outwide, and stopping any selvage threads from fraying

or breaking.

Secondly, it is important that the doubled 14/2 Red cotton threads be sleyed in with 2 ends of the 20/2 Yellow. If you sley them separately in a dent of the reed they will tend to go to the underside of the fabric, and will not make as definite lines. Thus, the squares, oblongs, and rectangles will not stand out as clearly as one wishes them to. Of course, sometimes you might wish this effect, and then of course, you have to remember to sley them separately in one dent of the reed, away from the other threads.

And, I feel that it is important that you use a firm, even, double beat, as this is quite a fine warp, and you want the weft to adequately fill the warp.

And, there can be a third major problem. This would be the float threads of red becoming looser and looser in the warp. If you have two warp beams, you can use both of them, one for the red warp, and one for the yellow warp. However, many looms do not have two beams, so you take a lease stick, go behind the harnesses, and pick up every doubled red thread and put the lease stick in between the red and yellow warp threads. Then slide it back over the back beam, and down to the warp beam, and then put a weight on each end, and perhaps in the middle also to keep the doubled 14/2 red threads taut.

When we were finished weaving this fabric from a 13 yard warp, we found that the red warp had 29 inches left when weaving was completed with the yellow.

So, you have to be ingenious, and devise a method of keeping the red warp threads tight.

TIE-UP DRAFT

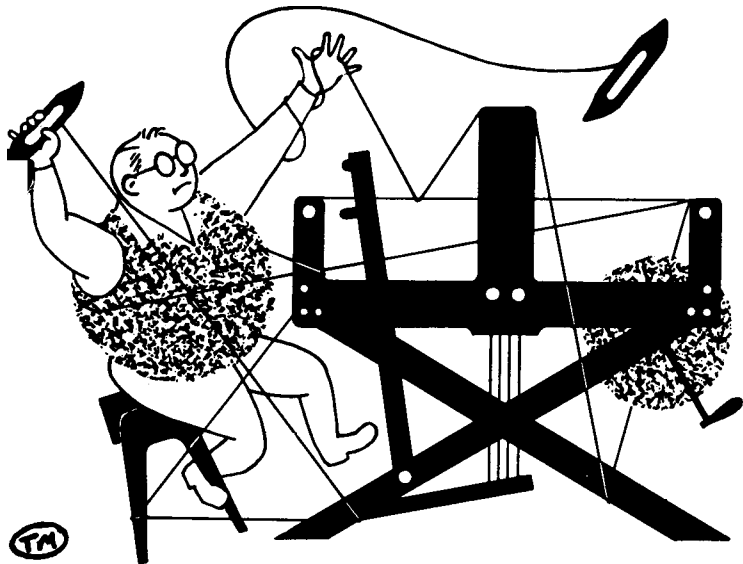
8		0		0		0
7				0		
6		0				
5						0
4	0	0		0		0
3		0		0		0
2		0		0	0	0
1	0		0		0	
	1	2	3	4	5	6

COST OF THE THREADS USED:

First of all, we had both of these two threads on sale at \$3.20 per lb.

COST OF THE FABRIC:

Warp cost per yard, 40-3/4"---- .56
Weft cost per yard----- .45
Fabric cost per yard-----\$1.01



drafts and designs

a guide for 5 to 12 harness weaves

VOLUME 16, Number 8, April, 1974

PARQUET AND FLAGSTONES

This month's sample is a 9 harness weave, an idea from a sample woven in Italy.

TIE-UP DRAFT:

9			0	0				0	0					0			
8			0					0	0	0				0	0		
7		0						0		0			0	0	0		
6	0	0	0	0		0	0					0			0		
5					0		0		0		0	0	0	0	0		
4	0	0	0			0	0			0	0						
3				0			0	0	0	0	0	0			0		
2		0		0		0		0		0		0		0	0		
1	0		0		0		0		0		0		0		0		
		1	2	3	4	5	6	7	8	9	10	11	12	13	14	15	16



KEY TO COLORS IN THE WARP:

- O---2/18's Worsted, Color # 9 Black
- X---2/18's Worsted, Color # 16 Dk. Brown
- B---2/18's Worsted, Color # 6 Grenadier Blue
- #---2/18's Worsted, Color # 20, Burgundy Red
- W---2/18's Worsted, Color # 11, White

WARP THREADS USED:

Our imported English 2/18's worsted in 5 colors was used in the warp. You see the color names above in the Key to colors used in the warp.

THREADING DRAFT:

9										#							
8										B							
7										W							
6		#		#						B		B					
5										W							
4										X		X		#			
3										X		X			#		#
2	W		W		W		W		W		W		W		W		W
1		W		W		W		O				W		W		W	O

DRAFTS AND DESIGNS

Published monthly (except July and August) by Robin & Russ Handweavers, 533 N. Adams St., McMinnville, Oregon.

SUBSCRIPTIONS: \$5.00 per year. Back issues or single copies, 50¢ each. Yearly subscriptions start with the September issue. If you subscribe after September, back issues from then on will be mailed to you, unless you specify that you want your subscription to start with the next September issue.

VOLUME 16, Number 8, April, 1974

WEFT USED:

There are two threads used in the weft and they alternate, one after the other in the entire fabric. One is our 2/18's worsted in color # 11, White, and the other is a 2 ply natural tan Douppioni Silk. The silk is about 4 times heavier than the 2/18's worsted.

REED USED:

A 16 dent reed was used, and it was double sleyed, 2 ends per dent, or 32 threads per inch.

MORE ABOUT THE THREADS USED:

The English 2/18's worsteds we have used before, and it has 4800 yards per pound, comes on approximately 1/2 lb. cones, and it is \$9.60 per lb.

The 2 ply natural tan Tussah Silk is a new silk thread in from England. It has about 1900 yards per lb., and comes on tubes of about 1 lb. each, and is priced at \$8.00 per lb. This is limited to about 50 lbs. which we found in England, and were able to purchase.

TREADLING SEQUENCE:

There are 16 shots in each complete pattern repeat, and you alternate the white 2/18's worsted and the natural tan Tussah Silk.

1. Treadle # 16 - 2/18's worsted white
 2. Treadle # 15 - Tussah Silk
 3. Treadle # 14 - 2/18's worsted white
 4. Treadle # 13 - Tussah Silk
 5. Treadle # 12 - 2/18's worsted white
 6. Treadle # 11 - Tussah Silk
 7. Treadle # 10 - 2/18's worsted white
 8. Treadle # 9 - Tussah Silk
 9. Treadle # 8 - 2/18's worsted white
 10. Treadle # 7 - Tussah Silk
 11. Treadle # 6 - 2/18's worsted white
 12. Treadle # 5 - Tussah Silk
 13. Treadle # 4 - 2/18's worsted white
 14. Treadle # 3 - Tussah Silk
 15. Treadle # 2 - 2/18's worsted white
 16. Treadle # 1 - 2/18's worsted white
- END OF ONE COMPLETE PATTERN REPEAT. Then, repeat over and over as desired.

AMOUNT OF WARP USED:

In our 14 yard warp, which was 40" wide, we used the following amounts of 2/18's worsted in the 14 yard warp.

- # 9, Black--- 4 ounces
- # 16, Dark Brown --- 6 ounces
- # 20, Burgundy Red -- 12 ounces
- # 6, Grenadier Blue --- 5 ounces
- # 11, White --- 1 lb. 12 ounces.

In the warp we used 55 oz. of warp or 3 lbs. and 7 oz. At \$9.60 per lb., the total warp cost for 14 yards was \$33.00 or the cost per yard was \$2.36 per yard.

AMOUNT OF WEFT USED:

We had 12 yards and 12 inches of finished fabric from our 14 yard warp, and it took 2 lbs. 8 oz. of the tussah silk, and 1 lb. 1 oz. of the 2/18's worsted white. Our total weft cost was \$30.20, or the cost per yard was \$2.46 per yard.

WARP COST PER YARD, 40" wide	-	\$ 2.36
WEFT COST PER YARD-----		2.46

FABRIC COST PER YARD----- \$\$ 4.82

MORE ABOUT THE FABRIC:

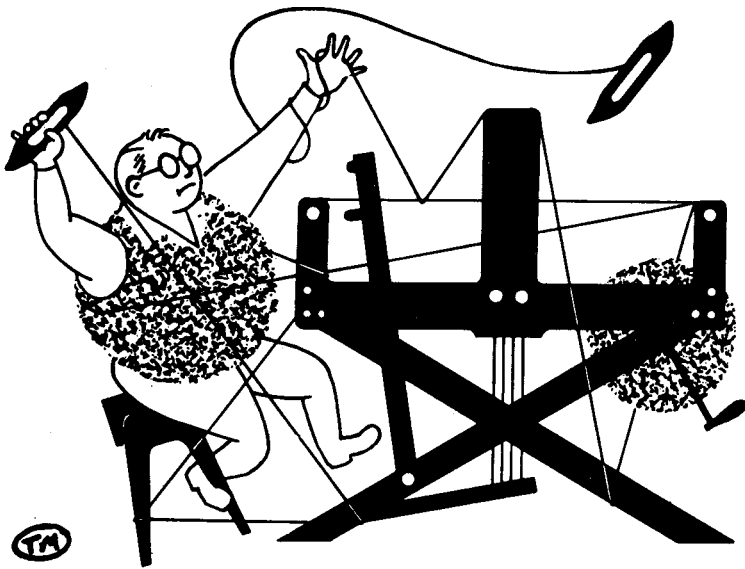
The hardest part of weaving this fabric is the warping, because of the five colors used in the warp.

The weaving was easy. We did use a stretcher or temple, and am not sure that it was entirely required, as the silk which is heavier kept the fabric out to a wider width than if the same weight had been used for both weft threads. I do think though that it stops many of the selvage threads from fraying and breaking, and do recommend it's use.

And, I suggest a medium, double beat, beating only with the shed open. You should open your shed, throw one shot of the shuttle, and with your foot still on the treadle, you beat once. Then, you change to the next treadle, open the shed, and beat again, slightly lighter than the first time. This helps clear the shed.

DRAFTS AND DESIGNS TO INCREASE IN PRICE:

Because of increases in mailing cost, and increases in thread cost, and in envelope costs, and salary increases, and slight increase in printing cost, we will be forced to increase the yearly subscription price of Drafts and Designs to \$6.00 per year, starting with the September issue. You might not realize it, but \$1.00 of this \$6.00 is used for mailing only. The mailing envelopes are not quite 5¢ each, the stencils for our mailing list have increased from \$30.00 per 1,000 to almost \$60.00 per 1,000. Hope that you all understand why we are forced to do this.



drafts and designs

a guide for 5 to 12 harness weaves

VOLUME 16, Number 9, May, 1974.

ORANGE CRUSH

Not a soft drink, but a blend of Orange and Yellow, in a heavy fabric that we'd like to suggest for a Patio Table-cloth, or for Patio Mats. An interesting 8 harness weave.

WARP:

Two colors of our Scottish 10/2, dry spun linen are used in the warp.

X--10/2 Parakeet Yellow Linen

O--10/2 Orange Orange Linen

WEFT:

Just one thread was used in the weft, and it was a $2\frac{1}{2}$ lea, slubby linen that comes in the same colors as the 10/2, only in this heavier slubby weight which has just 750 yards per lb. This was also in the color which is called Orange - Orange.

REED USED:

A 6 dent reed was used, and it was double sleyed, 2 ends per dent, or 12 threads per inch.

THREADING DRAFT:

8								X	X
7								X	X
6				0	0				
5				0	0				
4			X	X					
3		X	X						
2	0	0							
1	0	0							



TREADINGLING SEQUENCE:

The treadingling sequence is a very simple one called a walking treadingling. It is simply one shot of the $2\frac{1}{2}$ lea slub linen, orange, on each of the eight treadles, starting with # 1, and then treadingling to eight. Or, treadle 1, 2, 3, 4, 5, 6, 7, 8, over and over.

1. Treadle # 1--one time
2. Treadle # 2--one time
3. Treadle # 3--one time
4. Treadle # 4--one time
5. Treadle # 5--one time
6. Treadle # 6--one time
7. Treadle # 7--one time
8. Treadle # 8--one time

DRAFTS AND DESIGNS

Published monthly (except July and August) by Robin & Russ Handweavers, 533 N. Adams St., McMinnville, Oregon.

SUBSCRIPTIONS: \$5.00 per year. Back issues or single copies, 50¢ each. Yearly subscriptions start with the September issue. If you subscribe after September, back issues from then on will be mailed to you, unless you specify that you want your subscription to start with the next September issue.

VOLUME 16, Number 9, May, 1974.

MORE ABOUT THIS FABRIC:

Surprisingly enough, this was quite an easy fabric to weave, with very few problems.

A couple of times, we did have a heavier slub than usual, and we either pulled off part of the slub or cut it out.

And while the dry spun 10/2 linen thread is usually a little more fuzzier than the wet spun linen, there was no clinging together of the warp threads.

There could be a problem with your selvages, as on certain shots, your linen weft will not catch until in the shed about 4 or 5 threads. So, you can bring your shuttle up and over the two outside threads, or down and under the two outside threads, whichever the case might be.

Or, if you have a loom with more than 8 harnesses, you could also thread a selvage on harnesses 9 and 10, and change your tie-up so that # 9 harness is controlled by treadles 1,3,5,7, and 9, and the # 10 harness is controlled by treadles 2, 4, 6, 8, and 10.

Oh yes, there were a few big knots in the 10/2 linen warp, not many, but you do have to take care of them and not try and weave with them, as they catch on the reed, and stretch that one linen thread considerably. When this happens, I take a piece of the warp thread, wind it on a weighted spool and hang it over the back beam, and put it in in place of the thread with the knot. I put it through the correct heddle and dent of the reed, and then pin it to your weft, and weave until your thread which had the knot is long enough to put back in. This is the usual procedure with most weavers I believe. And, there is still another easier way, which I like to do. If there is a knot, I untie it or cut it so I have a little length, and then, I use the spee-dee cement and glue the two ends together, and in one minute, you are ready to weave, without any knot.

TIE-UP DRAFT:

8		0	0	0	0		
7	0		0	0	0		
6		0			0	0	0
5	0				0		0
4	0	0		0			0
3	0	0	0				0
2				0	0	0	0
1			0		0	0	0

1 2 3 4 5 6 7 8

COST OF THE THREADS USED:

We have been selling both our size 10/2 linen and the 2½ lea linen both for \$5.60 per lb. while it lasts, but we must warn you that we are getting very low in this, and that we have been notified by the linen company in Scotland that we cannot expect new stock for at least another year to a year and a half. Also, they said that at that time, it will probably be up in cost about \$2.00 to \$3.00 more per pound than it is now. So, let us tell you that we do have 10 colors out of 11 left in the size 10/2 linen (out of straw-gold) and we do have all 11 colors yet in the 2½ lea slub linen. The 10/2 linen has 1500 yards per lb., and the 2½ lea linen has 750 yards per pound. Both come on about 1 lb. tubes.

COST OF THE FABRIC:

We had a 14 yard warp, 40" wide, and it took 2 lbs. 8 oz. of each of the two colors of thread in the warp. Thus, with 5 lbs. of warp, the total warp cost was \$28.00 or the warp cost per yard was \$2.00 per yard.

In the weft, we used 9 lbs. 3 oz. of the 2½ lea, slub linen in the Orange color. We had 13 yards of finished fabric, so the weft cost per yard comes to \$3.94 per yard.

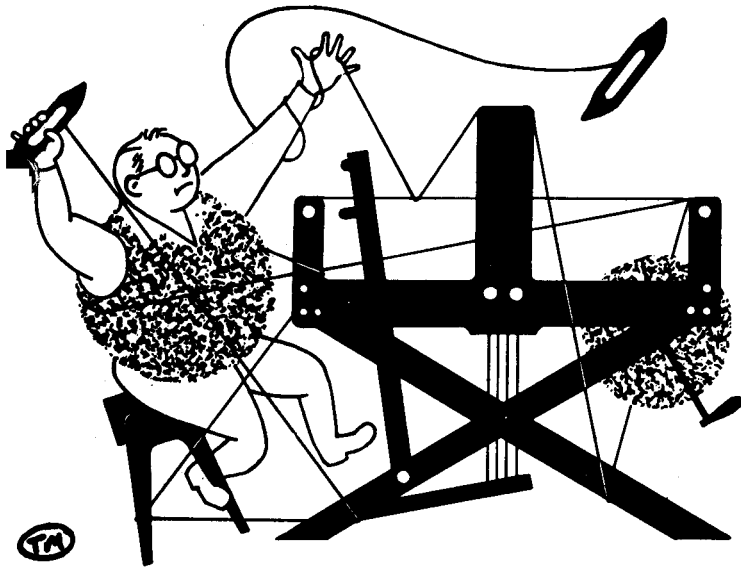
WARP COST PER YARD--40" wide-- \$ 2.00

WEFT COST PER YARD----- 3.94

FABRIC COST PER YARD----- \$ 5.94

A NOTE ABOUT LINEN THREADS:

One of the linen companies from Ireland has written us that the world demand for linen is now about 3 times greater than the actual supply. This is one reason for the long time of delivery, and it is why so few companies now have a stock of different sizes and colors of linen, and you will find it becoming more and more of a luxury item. If you like to weave with linen, and you do come across any good buys in linen thread, my suggestion is for you not to pass up an opportunity and to take it while and when you can. I'm not saying this to try and sell linens either, but to tell you what the actual situation is.



drafts and designs

a guide for 5 to 12 harness weaves

Volume 16, Number 10, June, 1974

CAMPFIRE AT DUSK

The girls in the shop here say that this most unusual 12 harness pattern reminds them of the coals in a fire when you have a campfire at dusk. We wove it and planned it as a luxury fabric for an exotic coat or suit.

TIE-UP DRAFT:

12	0	0	0	0	0								
11	0	0	0	0		0							
10	0	0	0			0	0						
9	0	0				0	0	0					
8	0					0	0	0	0				
7						0	0	0	0	0			
6		0	0	0	0	0							
5			0	0	0	0							0
4				0	0	0						0	0
3					0	0				0	0	0	
2						0			0	0	0	0	
1							0	0	0	0	0	0	
	1	2	3	4	5	6	7	8	9	10	11	12	



THREADING DRAFT:

12				D				O				L			Y
11				D				O				L			Y
10				D				O				L			Y
9				D				O				L			Y
8				D				O				L			Y
7				D				O				L			Y
6				D				O				L			Y
5				D				O				L			Y
4				D				O				L			Y
3				D				O				L			Y
2				D				O				L			Y
1				D				O				L			Y

KEY TO THREADS IN THE WARP:

- D--dark heather grey 6 ply alpaca
- O--orange 6 ply alpaca
- L--light heather grey 6 ply alpaca
- Y--light yellow 6 ply alpaca

DRAFTS AND DESIGNS

Published monthly (except July and August) by Robin & Russ Handweavers, 533 N. Adams St., McMinnville, Oregon.

SUBSCRIPTIONS: \$6.00 per year. Back issues or single copies, 65¢ each. Yearly subscriptions start with the September issue. If you subscribe after September, back issues from then on will be mailed to you, unless you specify that you want your subscription to start with the next September issue.

Volume 16, Number 10, June, 1974

WARP:

Our warp thread is a luxury alpaca thread which is quite beautiful, and which we probably will not be able to get again. We have used four colors in the warp, which are as follows:

- D--dark heather grey 6 ply alpaca
- O--orange 6 ply alpaca
- L--light heather grey 6 ply alpaca
- Y--light yellow 6 ply alpaca

WEFT:

The same four colors that were used in the warp, were also used in the weft.

REED USED:

An 8 dent reed was used, and it was double sleyed 2 ends per dent, or 16 threads per inch.

MORE ABOUT THE FABRIC:

First of all, please note the beautiful soft hand of this fabric. This is one of the most beautiful alpaca threads we have seen, and is a very outstanding quality yarn. It is just too bad that we cannot obtain this quality all the time.

Secondly, I felt that I would have liked this fabric much more, if we had put in the warp in a 9 dent reed, 2 ends per dent. We tried 10, and I thought it was a little too firm, and that is why we switched to the 8 dent reed, or 16 ends per inch.

Notice, that there is a fairly long float thread, so if you are going to use material such as this for a coat or some other such use, I would suggest that you have it bonded. This is the glueing of another piece of a fabric to the back of the woven piece here. This would help very much, if you pulled a thread, or if you caught a thread on something. It would give more support and stability to the fabric.

Also, you do not want to beat this too hard, or you tend to lose a portion

of the beauty of the design. It tends to pack in fairly firm as it is.

And you will find in the weaving, that it is best to use a light, even, double beat, to help clear the shed. Beat with the shed open all the time.

The warp thread is 6 ply, and once in a while, the 6 ply thread would have one of the plies break. So you have to be careful and watch out for this a little when you are weaving.

Also, the alpaca is a smooth and slippery thread, and with much stress, does seem to fray apart. So, my suggestion is that you put on a cotton selvage on the two edges to eliminate many of these problems. We are doing that in the weaving, and we find that this is a great help and the weaving does go easier.

What you want to do is to wind about 6 cotton threads each on 2 weighted spools, and hang 12 threads on each warp beam. Do not wind them on the warp beam, as there is more elasticity in the Alpaca, and if the cotton was on the beam with the Alpaca, it would snap and break as you weave. But, if you let it hang down over the back beam, by the warp beam, then you should be able to weave it without much trouble and without see any broken ends.

COST OF THE THREADS USED:

This 6 ply Alpaca is available in the 4 colors that were used in this sample. It comes on about 12 to 14 oz. tubes, and is \$6.80 per lb. There is just a limited amount of this available.

NOTE ABOUT THE COST OF THE FABRIC:

We have a 14 yard warp on the loom, and about 9 to 10 yards are woven. As it will take about another week to finish weaving it, I will take this to the printer without the cost of the finished fabric given this time.

TREADLING SEQUENCE:

The treadling sequence on this is a very simple and easy one.

You treadle as follows:

1. Treadle 1, 2, 3, 4, 5, and 6 using the dark heather grey.
2. Treadle 7, 8, 9, 10, 11, and 12 using the orange alpaca.
3. Treadle 1, 2, 3, 4, 5, and 6 and use the light heather grey alpaca
4. Treadle 7, 8, 9, 10, 11, and 12, using the light yellow alpaca.

This is the end of one complete pattern repeat. Repeat over and over as desired.