

drafts and designs

a guide for 5 to 12 harness weaves

VOLUME 17, Number One, September, 1974

WEDDING BELLES

This 8 harness weave is a beautiful fabric for a wedding dress, and usually it is a "Belle" that wears the dress, so thus our name for the fabric this month.

PLAN FOR 40" WIDE WARP, 1200 ENDS:

1. Right Selvage, 2,1,2,1, ets-- 14 thds.
 2. Thread pattern, 39 times--- 1170 thds.
 3. Thread 2,3,2, to bal. last complete pattern repeat---- 03 thds.
 4. Left selvage, 13 threads , threaded 1,2,1,2, etc,----- 13 thds.
- Warp 40" wide x 30 per inch = 1400 ends.

WARP:

Our warp is a fine silk and rayon combination thread. I do not know the percentage of silk and rayon, but I would think about 50% silk, 50% rayon. It is quite strong, and we never had one broken thread in our warp except when I dropped one shuttle and broke one thread. It came to us on 1½ to 2 lb. cones, and it is \$8.00 per lb. We have a limited amount of about 50 lbs. left.

THREADING DRAFT:

	D.		C.												B.	A			
8																			
7										X									
6										X					X				
5										X					X				
4										X					X				
3										X					X				
2	X	X	X	X		X	X		X	X		X	X		X	X		X	X
1	X	X			X	X		X	X		X	X		X	X		X	X	
	Selv		bal		30 threads in one complete pattern repeat													Selv	



WEFT:

Our weft is the same thread that was used in the warp with one difference. In the weft, we doubled it or wound 2 ends together of the silk and rayon combination thread.

DRAFTS AND DESIGNS

Published monthly (except July and August) by Robin & Russ Handweavers, 533 N. Adams St., McMinnville, Oregon.

SUBSCRIPTIONS: \$6.00 per year. Back issues or single copies, 65¢ each. Yearly subscriptions start with the September issue. If you subscribe after September, back issues from then on will be mailed to you, unless you specify that you want your subscription to start with the next September issue.

VOLUME 17. NUMBER One. September, 1974

REED USED:

A 15 dent reed was used, and it was double sleyed, 2 ends per dent, or 30 threads per inch.

TIE-UP DRAFT:

8	0				0	0		
7		0	0	0				0
6	0		0	0	0			0
5		0		0	0	0		
4	0		0		0	0		
3		0		0		0		
2	0		0		0			0
1		0		0		0		

1 2 3 4 5 6 7

A B

TREADLING SEQUENCE:

There are 28 shots in one complete pattern repeat. Here is the sequence.

1. Treadle # 2---doubled silk & rayon
2. Treadle # 3---doubled silk & rayon
3. Treadle # 2---doubled silk & rayon
4. Treadle # 1---doubled silk & rayon
5. Treadle # 4---doubled silk & rayon
6. Treadle # 1---doubled silk & rayon
7. Treadle # 2---doubled silk & rayon
8. Treadle # 5---doubled silk & rayon
9. Treadle # 2---doubled silk & rayon
10. Treadle # 1---doubled silk & rayon
11. Treadle # 6---doubled silk & rayon
12. Treadle # 1---doubled silk & rayon
13. Treadle # 2---doubled silk & rayon
14. Treadle # 7---doubled silk & rayon
15. Treadle # 2---doubled silk & rayon
16. Treadle # 1---doubled silk & rayon
17. Treadle # 6---doubled silk & rayon
18. Treadle # 1---doubled silk & rayon
19. Treadle # 2---doubled silk & rayon
20. Treadle # 5---doubled silk & rayon
21. Treadle # 2---doubled silk & rayon
22. Treadle # 1---doubled silk & rayon
23. Treadle # 4---doubled silk & rayon
24. Treadle # 1---doubled silk & rayon
25. Treadle # 2---doubled silk & rayon
26. Treadle # 3---doubled silk & rayon

27. Treadle # 2---doubled silk & rayon
 28. Treadle # 1---doubled silk & rayon
- END OF ONE COMPLETE PATTERN REPEAT. Do repeat over & over as desired.

SOURCE OF IDEA FOR THIS SAMPLE:

One of our customers, Lois Jacobsen, of Indiana wove this pattern for a wedding dress fabric, and the remains were used as samples in the bulletin of the Indiana Weavers Guild, and it was here that we saw and admired her work so much, that we felt you might enjoy seeing it also.

MORE ABOUT THIS FABRIC:

One of the first things I want to mention about this sample is that it is usually called Huckaback, or single huck.

It was a fairly easy fabric to weave. While the treadling sequence is a fairly long one, if you are systematic in your weaving, and develop a definite rhythm in your weaving, you will find it will go much faster than anticipated.

I would like to give you the suggestions of Lois Jacobsen for the finishing of this fabric. She washed it on a gentle cycle in her washing machine, and then allowed to dry in the open air on the clothes line. Then, she steam pressed it. She also mentions that when the material was made up, she used an organza type of backing, which gave it good draping qualities.

COST OF THE FABRIC:

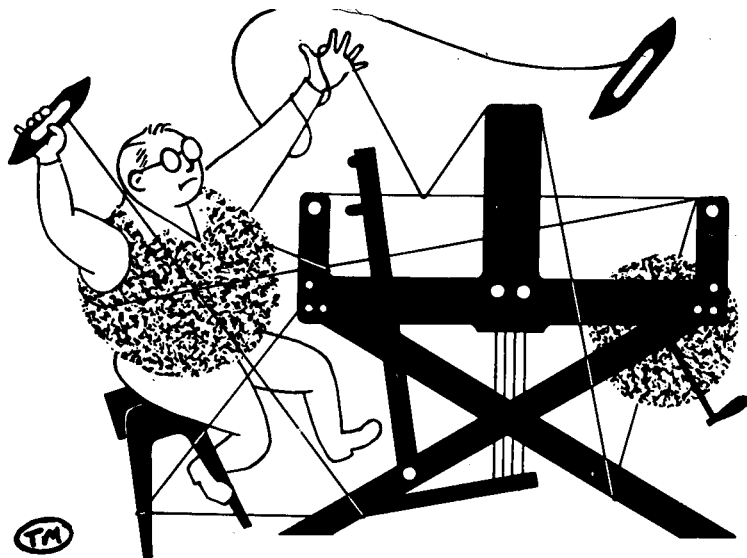
We had a 14 yard warp, 40" wide on the loom. It took 16,800 yards of warp thread or 1 and 3/5 pounds of this silk and rayon combination thread at \$8.00 per lb. So, our total warp cost was \$12.80 or the cost per yard was 92¢ per yard.

In the weft, we doubled our warp thread and used it as weft. We found it took 3 1/2 oz. per yard to weave this fabric or a total of 45 1/2 oz. or slightly less than 3 lbs. for 13 yards of finished fabric. Our total weft cost for 13 yards was \$22.75 or the cost per yard was \$1.75 per yard.

WARP COST PER YARD, 40" wide--- .92
WEFT COST PER YARD----- 1.75
FABRIC COST PER YARD-----\$2.68

BINDERS FOR DRAFTS AND DESIGNS

Imprinted on the back-bone and the front of the binder, these will hold about 3 years. Also, page protectors are available at 12¢ each. Binders are \$3.50 plus pp.



drafts and designs

a guide for 5 to 12 harness weaves

VOLUME 17, Number 2. October, 1974

HIGHLAND FLING

This is just an 8 harness twill weave but it is an interesting pattern. Be sure to look at the back of this sample, and see how the direction of the weave changes by the color effect on the two faces of the fabric.

THREADING DRAFT:

8	M						
7		D					
6			L				
5				L			
4					M		
3						D	
2							L
1							

TIE-UP DRAFT:

8		0			0	0	0		
7	0	0		0	0				
6	0			0				0	0
5		0	0					0	0
4	0	0				0			
3	0				0	0		0	
2			0	0	0				0
1			0	0		0	0		
	1	2	3	4	5	6	7	8	

KEY TO COLORS IN THE WARP:

- M--Lavender Grey Scottish Heather
- D--dark navy charcoal scottish heather
- L--pink beige scottish heather

WARP THREADS USED:

About a year ago, we purchased some Scottish heather homespun type yarns,



which was being discontinued by a mill in Scotland. These three yarns used in this sample are some of the heather homespun yarns and are a single ply yarn, and sometimes they have a little fleck of color spun in with the basic color of the yarn. Most of these yarns from Scotland seem to be a heather blend of colors before they are twisted and spun for warp and weft. While this is almost always a single ply yarn, it is constantly used for both warp and weft in the British Isles. For many years, I hesitated to use the single ply for warp and weft, but in the past five years, we have been able to use it with many satisfying results, as you

DRAFTS AND DESIGNS

Published monthly (except July and August) by Robin & Russ Handweavers, 533 N. Adams St., McMinnville, Oregon.

SUBSCRIPTIONS: \$6.00 per year. Back issues or single copies, 65¢ each. Yearly subscriptions start with the September issue. If you subscribe after September, back issues from then on will be mailed to you, unless you specify that you want your subscription to start with the next September issue.

VOLUME 17, Number 2, October, 1974

see from this sample.

M---medium shade - Lavender Gray
D---dark shade --- Navy Charcoal
L---light shade -- Pink Beige

WEFT THREADS USED:

The same three colors of this heather homespun yarn is used in the weft, as well as in the warp.

REED USED:

A 12 dent reed was used, and it was double sleyed, 2 per dent or 24 per inch.

LENGTH OF WARP AND LOSS IN WEAVING AND WASHING.

Our warp was 14 yards long, 40" wide. From this length, we received 12-1/2 yards of finished fabric. As this yarn is spun in oil, I decided that this should be washed and pressed before putting in the bulletin for samples. It was 38 1/2" wide when taken off the loom, and after washing, it lost about 1" in width to 37-1/2". And, in the total length, we lost 12" of length in the washing, so we had 12 yards and 6" of finished fabric.

TREADLING SEQUENCE:

There are just 8 shots in each pattern repeat, but you must be sure to get the right color on the right treadle to make this interesting pattern.

1. Treadle # 1--Light--Pink Beige
2. Treadle # 2--Light--Pink Beige
3. Treadle # 3--Dark---Navy Charcoal
4. Treadle # 4--Medium-Lavender Gray
5. Treadle # 5--Light--Pink Beige
6. Treadle # 6--Light--Pink Beige
7. Treadle # 7--Dark---Navy Charcoal
8. Treadle # 8--Medium-Lavender Gray

End of one complete pattern repeat. Repeat over and over as desired.

COST OF THE THREADS USED:

I purchased all that was left of two discontinued lines of heather homespun, and as a result, we are able to sell this yarn for a good price at \$4.00 per lb. while it lasts. We do have about

20 colors on hand. These yarns have from 2800 to 3200 yards per lb., and we do sell them by the tube only. The tubes vary depending on color from 1 to 1 1/2 lb in weight.

COST OF THE FABRIC:

In our 14 yard warp, 40" wide, we used 2 lbs. 1 oz. of the Pink Beige; 1 lb. 3 oz. of the Lavender Gray, and 1 lb. of the Navy Charcoal. So, it took 4 lbs. 4 oz. for our 14 yard warp. Our total warp cost was \$17.00 or the cost per yard was \$1.22 per yard.

In the weft, we used 1 lb. 15 oz. of the Pink Beige, 1 lb. 3 oz. of the Lavender Gray, and 15 oz. of the Navy Charcoal in 12 1/2 yards of finished fabric. So, we used 4 lbs. 1 oz., so the total weft cost was \$16.25 or the cost per yard was \$1.30 per yard.

WARP COST PER YARD--40" wide--\$ 1.22

WEFT COST PER YARD----- 1.30

FABRIC COST PER YARD-----\$ 2.52

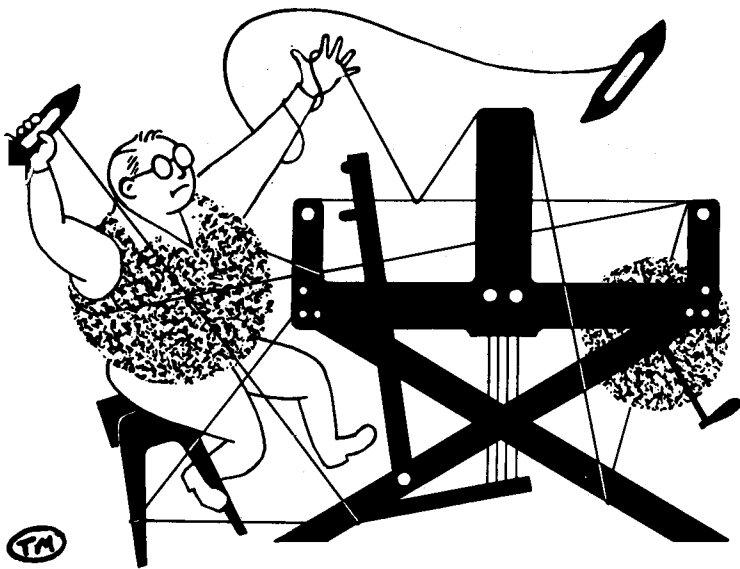
MORE ABOUT THE FABRIC:

We had one problem with the weaving of this fabric, and we must tell you about it. As this is a single ply, heather homespun, sometimes you will come across a portion where the twist is not as tight. Thus, sometimes a warp thread will tend to pull apart. We used spee-dee cement, and glued it together and proceeded with our weaving. I might mention that tie-ing a knot and proceeding with the weaving is not the solution to this problem, as it will just pull apart again, if you are not careful, and the knot hitting on the edge of the reed will help do this. This is why I recommend as the most convenient way to handle this.

And the other thing is that we did use a temple or stretcher to keep it out as wide as possible. This will eliminate about 50% of any breakage problems of selvage or edge threads if you do use a temple or stretcher.

BINDERS FOR DRAFTS AND DESIGNS:

We had some binders made for us with the same name on the front of the binder and also on the backbone. It is marked "Drafts and Designs" in large gold letters on the front and backbone. Each binder will probably hold about three years issues without any problems. Also, we still have some of the clear plastic page protectores, which protect the complete page, and insure that you do not lose any of the samples of they come loose from the page. The binders sell for \$3.50, and the page protectors are 12¢ each.



drafts and designs

a guide for 5 to 12 harness weaves

VOLUME 17, Number 3. November, 1974

DECORATOR'S DELIGHT:

This 8 harness twill variation has been planned for upholstery for the cushions or seats on dining room chairs in some period furniture.

THREADING DRAFT:

8				X			
7				X	X		
6			X			X	
5			X			X	
4		X				X	
3	X					X	
2	X					X	
1							X

TIE-UP DRAFT:

8			0	0	0
7			0	0	0
6		0	0		0
5		0	0		0
4	0	0			0
3	0	0			0
2	0			0	0
1	0			0	0

1 2 3 4 A B

WARP USED:

Our warp was a 20/2 mercerized and gassed Egyptian cotton in color called "Red."

WEFT USED:

Two types of threads were used in the weft. One was the 20/2 egyptian cotton and this tabby thread was in the color a little different than the warp, and it has the name "BRIGHT RED."



And for the pattern thread, we used 3 colors of our English tapestry or rug wool. This yarn comes in 46 colors, and we have them all in stock except one or two, and we do have a new 25 lb. stock of all of the colors at the docks in Portland, to be picked up in a week.

The colors of the pattern threads used were Light Purple, Magenta, and Dark Red.

REED USED:

A 15 dent reed was used, and it was double sleyed, 2 ends per dent, or 30 threads per inch.

DRAFTS AND DESIGNS

Published monthly (except July and August)
by Robin & Russ Handweavers, 533 N. Adams
St., McMinnville, Oregon.

SUBSCRIPTIONS: \$5.00 per year. Back issues
or single copies, 50¢ each. Yearly subscrip-
tions start with the September issue. If
you subscribe after September, back issues
from then on will be mailed to you, unless
you specify that you want your subscription
to start with the next September issue.

VOLUME 17, Number 3. November, 1974

WIDTH AND LENGTH OF WARP AND AMOUNT OF FINISHED FABRIC FROM THE WARP:

Our warp was set-up on the loom, and we had a 12 yard warp, 40" wide. This wove down in width to 38½" or actually a little less than 39" width. On the loom, when the weaving was finished, we had measured 11 yards and 4" of finished fabric, still under tension. However, when the tension was released and we took this fabric off the loom and measured it, we found that there was 10-1/2 yards of finished fabric.

TREADLING SEQUENCE:

Please note that the heavy pattern threads of the wool were used in the same sequence of colors over and over. This sequence was Magenta, Dark Red, and Purple over and over.

And, also, please do note that we had and in the same sequence all the time, an A and a B tabby thread, between each of the pattern threads, and this was done in the bright red, 20/2 mercerized and gassed, egyptian cotton.

1. Treadle # 1---Magenta, 2 ply wool
2. Treadle # a---20/2 bright red cotton
3. Treadle # b---20/2 bright red cotton
4. Treadle # 2---dark red, 2 ply wool
5. Treadle # a--- 20/2 bright red cotton
6. Treadle # b---20/2 bright red cotton
7. Treadle # 3---lt. purple, 2 ply wool
8. Treadle # a---20/2 bright red cotton
9. Treadle # b---20/2 bright red cotton
10. Treadle # 4---Magenta, 2 ply wool
11. Treadle # a---20/2 bright red cotton
12. Treadle # b---20/2 bright red cotton
13. Treadle # 3---dark red, 2 ply wool
14. Treadle # a---20/2 bright red cotton
15. Treadle # b---20/2 bright red cotton
16. Treadle # 2---lt. purple, 2 ply wool
17. Treadle # a---20/2 bright red cotton
18. Treadle # b---20/2 bright red cotton

End of one complete pattern repeat. Repeat over and over as desired. And on your last and final repeat, repeat the first 3 threads of your pattern to balance the pattern completely.

COST OF THE THREADS USED:

The 20/2 egyptian cotton comes in 90 plus

colors, on 1/2 lb. cones, and it is \$4.25 per 1/2 lb. cone, or \$8.50 per lb.

The 2 ply english tapestry wool, or rug wool comes on 4 oz. tubes, and it is \$2.00 per 4 oz. tube, or \$8.00 per lb.

MORE ABOUT THE FABRIC:

First of all, our sample is not washed and pressed, or it would be firmer, closer and lay flat, and would have a much softer hand or feel. So do wash in luke-warm or warm water, extract, allow to drip dry and then steam press your finished fabric.

Secondly, a firm, even, double, beat is important. Do beat the 2nd time with your shed open on the next shot before you throw your shuttle.

This one is quite easy to weave. No problems that we can tell you about. Once you get used to the color sequence, you will find it fast and easy to weave, and a good weaver should be able to weave a yard in between 1 to 2 hours. You will be surprised. It will weave much faster than you think.

I might add that I intended weaving a small diamond pattern, which we do have here. However, it is not very distinct, as the color does distract from the pattern. And, our diamond pattern was woven on the sequence of 1,2,3,4,3,2,1. However, the more I think about it, the more I think I would have liked it if I had woven 1,2,3,4,1,4,3,2,1.

Another thing that I wonder about is if it wouldn't have been better to weave from light to dark for beginning to center of the pattern, and dark to light from the center to the beginning. I think that in this way, with the alternate treadling that I gave above, the diamond would be much more distinctive in the pattern.

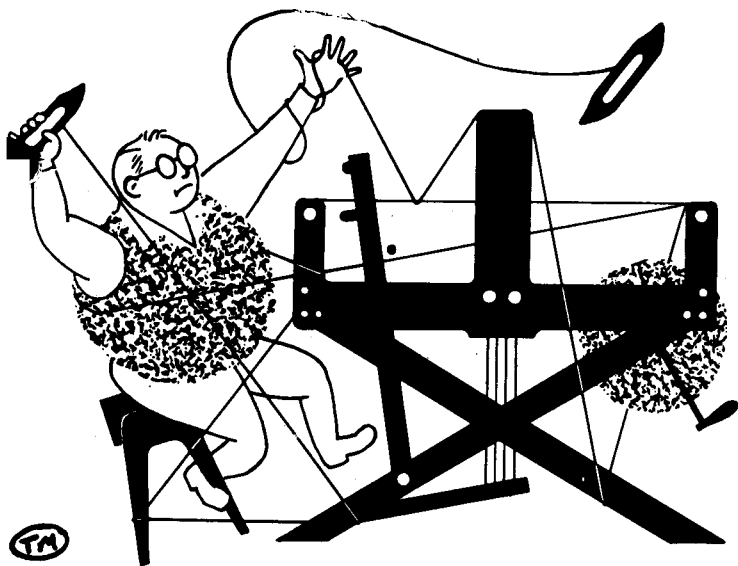
We have done one or two other samples somewhat similiar in years past, but I wanted again to demonstrate how versitile a point twill draft is, and also how important the use of color is in these upholstery fabrics.

COST OF THE FABRIC:

In the warp, we used 1 lb. 12 oz. of the 20/2 red. Total warp cost for 12 yards was \$14.37, or the cost per yard, 40" wide, was \$1.24 per yard.

In the weft, we used 1 lb. 10 oz. of the bright red cotton tabby, and 5 lbs. 10 oz. of the 2 ply English tapestry or rug wool. Total weft cost for 10½ yards was \$58.80, or the cost per yard was \$5.60 per yard.

WARP COST PER YARD, 40" wide----	\$ 1.24
WEFT COST PER YARD, 39" wide----	5.60
<hr/>	
FABRIC COST PER YARD-----	\$ 6.84



drafts and designs

a guide for 5 to 12 harness weaves

Volume 17, Number 4. December, 1974

NIGHT OF STARS:

This 8 harness windmill weave has been planned for an afghan or blanket. It could also be used as pillow covers. The pinwheeling stars of the design inspired the name.

THREADING DRAFT:

8			0				A
7			0				A
6			0				A
5			X				B
4			X				B
3		0					A
2	0						A
1	0						A

WARP:

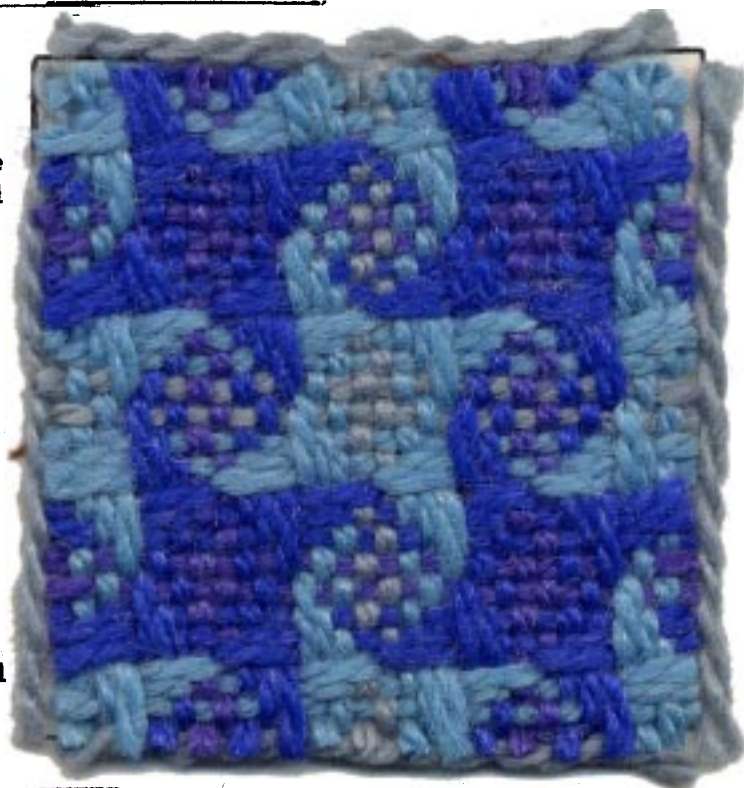
Four colors were used in the warp; all of them were 2 ply wool yarns.

- O--Bright Dark Blue
- X--Dark Purple
- A--Light Blue
- B--Light Blue-gray

TIE-UP DRAFT:

8				0	0	0	0
7				0	0	0	0
6		0		0	0	0	0
5	0	0		0	0		
4	0	0		0	0		
3	0	0		0	0		
2	0	0	0	0			
1	0	0	0	0			

1 2 3 4 5 6 7 8



WEFT:

The same four colors of the 2 ply wool yarns were used in the weft.

REED USED:

We recommend that you use an 8 dent reed. It is sleyed 1 end per dent. We used a 10 dent reed in our small design sample and decided larger dents were needed. We wove the fabric you see here using a 9 dent reed. Still the yarns were tight enough in the reed that it had to be pushed with an equal amount of pressure both forward and back again. Most of you probably already own an 8 dent reed, which is another good reason for using it.

DRAFTS AND DESIGNS

Published monthly (except July and August)

by Robin & Russ Handweavers

533 North Adams Street

McMinnville, Oregon 97128

SUBSCRIPTIONS: \$6.00 per year. Back issues or single copies, 65¢ each. Yearly subscriptions start with the September issue. If you subscribe after September, back issues from then on will be mailed to you, unless you specify that you want your subscription to start with the next September issue.

VOLUME 17, Number 4. December, 1974

TREADLING SEQUENCE:

There are 16 shots in one complete pattern repeat. We used four shuttles. Here is the sequence:

1. Treadle # 1 -- Bright Dark Blue wool
2. Treadle # 2 -- Bright Dark Blue wool
3. Treadle # 3 -- Bright Dark Blue wool
4. Treadle # 4 -- Dark Purple wool
5. Treadle # 5 -- Dark Purple wool
6. Treadle # 6 -- Bright Dark Blue wool
7. Treadle # 7 -- Bright Dark Blue wool
8. Treadle # 8 -- Bright Dark Blue wool
9. Treadle # 1 -- Light Blue wool
10. Treadle # 2 -- Light Blue wool
11. Treadle # 3 -- Light Blue wool
12. Treadle # 4 -- Light Grayed Blue wool
13. Treadle # 5 -- Light Grayed Blue wool
14. Treadle # 6 -- Light Blue wool
15. Treadle # 7 -- Light Blue wool
16. Treadle # 8 -- Light Blue wool

END OF ONE COMPLETE PATTERN REPEAT.

Repeat over and over as desired. As you can see, this fabric is treadled as a twill.

SOURCE OF IDEA FOR THIS SAMPLE:

A two color version of this windmill pattern is included in Else Regensteiner's book, *The Art of Weaving*. We liked the design and thought it would be fun to mix more colors. To do this and keep clear outlines of the star shapes, each pair of colors must be quite similar in shade and still create great contrast between the two pairs. To do this, we teamed two light blues and the two darks, blue and purple. We like the effect of the four color checkerboard of the swirls between the stars.

MORE ABOUT THE FABRIC:

Since this yarn is nice and fluffy, soft, it will pile up quickly on the loom's back beam. You may want to plan to use your usual tricks, paper or lease sticks as the warp is wound on. Or if you plan to weave a series of blankets, just put part of them on the loom at a time.

In weaving this fabric, we had knots in the warp now and then. They were cut and glued with Speedee cement so that they were invisible in the finished afghan.

This pattern was also used with a fine wool in our May 1964 Drafts and Designs. It was also shown in *Handweaver and Craftsman*. It is interesting to see how it changes with different colors and yarns. It obviously appeals to a lot of us.

Since it is treadled as a twill, it is really quite an easy pattern to weave. The sequence of shuttles is simple to learn.

COST OF THE FABRIC:

In the warp we used 3 pounds 14 oz. Light blue 2 ply wool, 1 pound 5 oz. Light blue-gray 2 ply wool, 3 pounds 5½ oz. of Bright Dark blue 2 ply wool, and 1 pound 6 oz. Dark purple 2 ply wool. This gives us a total of 9 pounds and 14½ oz. for the 14 yard warp. Our fabric was 40" wide. At \$5.60 per pound for the yarn, the total cost of the warp was \$55.50. This averages out to be \$3.96 per yard of warp.

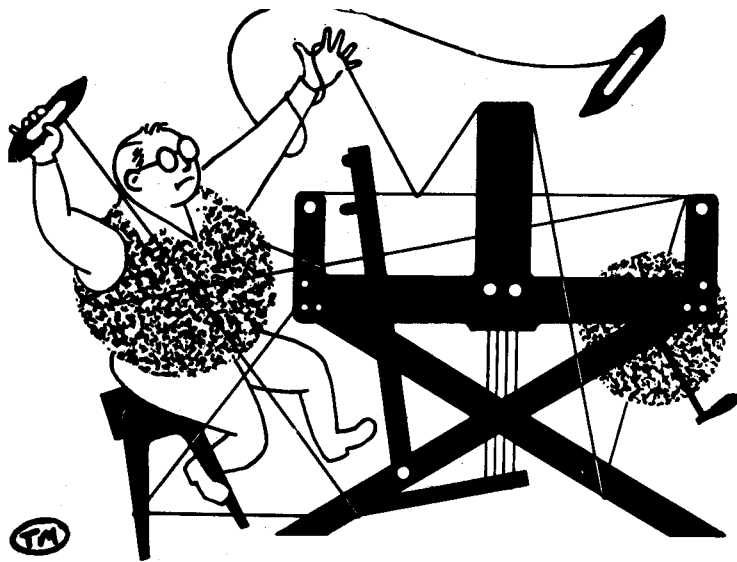
In the weft we used 3 pounds 4 oz. Light blue 2 ply wool, 1 pound 4½ oz. Light gray-blue, 2 pounds 13½ oz. of Bright Dark Blue, and 1 pound 1 oz. of Dark purple. This means the total amount of 2 ply wool yarn used in the warp was 8 pounds and 7 ounces. There were 13 yards of finished fabric. At \$5.60 per pound, the total weft cost is \$47.25. The weft cost per yard then is \$3.94. The cost per yard of the finished fabric is \$7.90.

WARP COST PER YARD, 40" wide	-----	\$3.96
WEFT COST PER YARD,	-----	\$3.94
FABRIC COST PER YARD	-----	\$7.90

MORE ABOUT THE YARNS USED:

We get this soft twist 2 ply wool yarn from England. We thought it was 100% wool, but there is a slight bit of clear synthetic filament added to give it touches of sparkle. The yarn comes in approximately 4 oz. skeins and sells for \$5.60 per pound. There are a total of 44 different colors to choose from. So you can design your own variation in this same yarn if you like.

We also have in stock a 3 ply yarn with the same yardage per pound, in 35 colors, just in from England. It is put-up in 4 oz. skeins. We also have the same 35 colors in a heavier 6 ply in the same type of yarn. Both of these are 100% wool, and the price is \$1.70 per 4 oz. skein.



drafts and designs

a guide for 5 to 12 harness weaves

VOLUME 17, Number 5. January, 1975

DOUBLE ELLIPSE:

This most interesting 8 harness twill variation has two have circles which are opposite one another, and which make it most interesting. Woven of the new, beautiful quality, 2/32's worsted from England, this is a striking fabric.

WARP:

Our warp is a beautiful new, 2/32's worsted yarn, which we have imported from England in 33 different colors. We used four colors in the warp as listed in Key to Colors in the warp.

WEFT:

Our weft was just one color of the 2/32's worsted, color # S-71, Dark Puppy Brown.

REED USED:

A 12 dent reed was used, and it was sleyed 4 ends per dent, or 48 threads per inch.

THREADING DRAFT:

8	S	X	X	S	O	B	
7	S	X	X	S	O	B	
6	S	X	X	O	B	B	
5	S	X	X	O	B	B	
4	O	X	X	O	B	B	
3	O	X	X	O	B	B	
2	X	X	O	S	B	O	
1	X	X	O	S	B	O	

KEY TO COLORS IN THE WARP:

1. S-- color # S-71 Dk Puppy Brown
2. O-- color # P.O. Melting Snow
3. X-- color # S-69 Wheat Fields
4. B-- color # S-70 Gold on Gold



TIE-UP DRAFT:

8				0	0	0	0	
7				0	0	0	0	
6		0	0	0	0			
5		0	0	0	0			
4	0	0	0	0				
3	0	0	0				0	
2	0	0				0	0	
1	0				0	0	0	
	1	2	3	4	5	6	7	8

DRAFTS AND DESIGNS

Published monthly (except July and August) by Robin & Russ Handweavers, 533 N. Adams St., McMinnville, Oregon.

SUBSCRIPTIONS: \$6.00 per year. Back issues or single copies, 65¢ each. Yearly subscriptions start with the September issue. If you subscribe after September, back issues from then on will be mailed to you, unless you specify that you want your subscription to start with the next September issue.

VOLUME 17, Number 5. January, 1975

COST OF THE FABRIC:

In our 12 yard warp, 40" wide, we used 2½ lbs. total of warp thread, in 4 different colors. Thus, our total warp cost was \$30.00 for 12 yards or \$2.50 per yard.

In the weft for 11 yards plus of fabric, we used 2 lbs. and 4 oz. of thread for weft. Thus, the total weft cost at \$12.00 per lb. comes to \$27.00 for 11 yards of the finished fabric. This of course, does not count loss in width and loss in length from washing.

WARP COST PER YARD-----	\$ 2.50
WEFT COST PER YARD-----	2.45
FABRIC COST PER YARD-----	\$ 4.95

TREADLING SEQUENCE:

The treadling is a little unusual in the sequence, and we feel that in order to keep track of the sequence, we feel that it would be important that you start throwing your shuttle from the left, and end in groups as we tell you below. On the end of each row of treadling below, we will mark where your shuttle will end on the left side by an "L" and on the right side by an "R".. There are 31 shots in each complete treadling sequence, and we have divided it into 6 rows in order to keep the sequence straight.

1. Treadle 1-2-3-4-5-6 -"L"
2. Treadle 5-4-5-6 -"L"
3. Treadle 5-4-3-2-1 -"R"
4. Treadle 5-4-3-2-1-8 -"R"
5. Treadle 1-2-1-8 -"R"
6. Treadle 1-2-3-4-5-6 -"L".

End of one complete treadling unit.
Repeat over and over as desired.

COST OF THE THREADS USED:

The 2/32's worsted comes in 33 colors, has 8900 yards per lb., and comes on tubes of approximately 1 lb. each. The price is \$12.00 per lb.

WARP WIDTH AND LENGTH:

Our warp was set up 40" wide, and we had a 12 yard warp. In the weaving, it

was set up at 40" wide, and came down to about 37" when the weaving was in process. However, when we finished weaving, we had 11 yards and 1½" of fabric from the 12 yard warp. We washed it, and it came down 3 more inches in the width to 34" wide, and it came down in length from 11 yards 1½ inches to 10 yards and 16 inches. So, when planning, you must allow for this accordingly.

MORE ABOUT THIS FABRIC:

Even though this is such a fine thread, it does have a nice twist, and it is a botany quality yarn, so we had very little problems with it in the warping. We did find that the natural had a little more tendency to twist than did the colors, and so this means that the twist was set in the dyeing, and not set in the natural as it was not dyed.

This "Botany" quality worsted is one of the most beautiful yarns you will ever find. It is used in England for suitings of all kinds, and also for accents or stripes in many, many different kinds of suitings.

The weaving was no problem. We did try to maintain an even beat, and we feel that we averaged out to about 54 shots of weft thread per inch, slightly more than the number of threads per inch in the warp. This, is about right, as you know that in twills, the weft usually does pack in a little more than the warp.

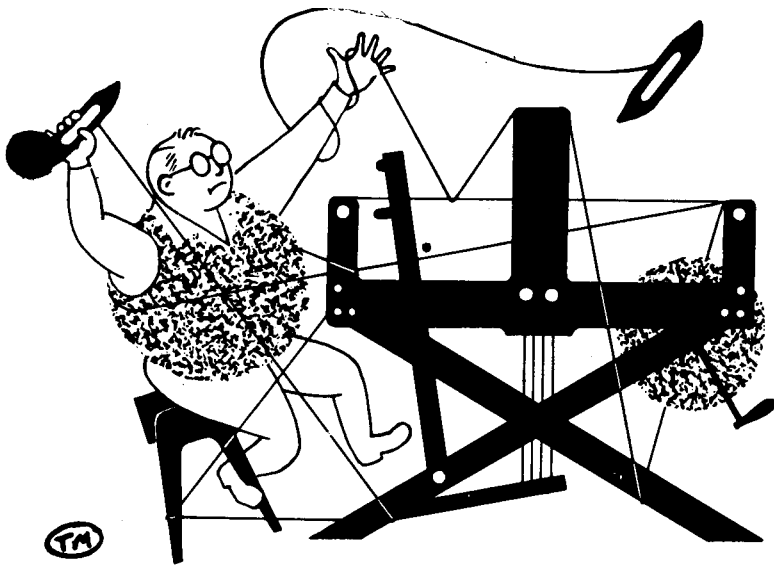
Actually, we thought that this would work very well at 54 ends per inch, and so would like to recommend setts of this thread for anywhere from 40 to 54 per inch, depending upon what size weft thread and pattern being used.

This yarn should be beautiful yarn for tie materials.

The company in England also has this in stock in the same colors in a 2/45's worsted, finer than this one. We can special order any of the colors in this finer weight in a minimum lot of 5 lbs. of a color. We have made up sample sheets of the 2/32's worsted, and they are available free of charge upon request.

We have just stocked 5 lbs. each of the 33 colors, so if we do run out, we can order more and have it in about two months time, or perhaps sooner if via air-mail.

We machine washed this, and allowed it to drip dry, and then steam-pressed it. The feeling of this finished fabric is one of the most pleasant ones you will ever find in a wool yarn. As many of you know, botany quality, means that it is one of the finest quality yarns available on the market.



drafts and designs

a guide for 5 to 12 harness weaves

Volume 17, Number 6

February, 1975

CHECKER STAIRS

This pattern was inspired by a coverlet in the great book, *Keep Me Warm One Night*. The design is reminiscent of stairs. Call the color log cabin brown and it's a fine Early American coverlet combination. This fabric could be used as a soft, friendly, traditional coverlet, or it could make a great and durable fabric for a pants suit or skirt suit.

TIE-UP DRAFT

3		0		0	0	0		0
7		0	0		0	0	0	
6		0	0	0		0	0	0
5		0	0	0	0		0	0
4		0	0	0		0		0
3		0	0		0		0	
2	0			0		0		0
1	0		0		0		0	
	A	B	1	2	3	4	5	6

WARP

Our warp was all 20/2 mercerized Egyptian cotton in Chocolate Brown, Color #1253. There are 8400 yards per pound in this finest quality cotton. It comes on $\frac{1}{2}$ pound cones which have 4200 yards each. It is gassed cotton for strength and gloss. There are 85 colors in this 20/2 weight.

REED USED

The fabric was woven with a 16 dent reed sleyed 2 ends per dent or 32 ends per inch. The fabric was 40" wide in the reed so had 1280 ends in the warp.



WEFT

The tabby weave in the weft is the same 20/2 cotton yarn used as warp, but in a different brown color, Brown, Color #1263.

The pattern weft thread is an excellent quality wool yarn, 2/18's worsted in Color #38, Vicuna Tan. This worsted yarn is from England and comes on approximately $\frac{1}{2}$ pound cones. There are a total of 39 colors of this yarn. It also has 4800 yards per pound.

DRAFTS AND DESIGNS

Published monthly (except July and August) by Robin and Russ Handweavers, 533 N. Adams St. McMinnville, Oregon.

SUBSCRIPTIONS: \$6.00 per year. Back issues or single copies, 65¢ each. Yearly subscriptions start with the September issue. If you subscribe after September, back issues from Sept. on will be mailed to you, unless you specify that you want your subscription to start with the next September issue.

COST OF THE THREADS USED

The 20/2 Egyptian cotton that was used in both the warp and weft is \$8.00 per pound and comes on $\frac{1}{2}$ pound cones, with 4200 yards per cone.

The 2/18's worsted that was used as the pattern weft thread is \$9.60 per pound and has 4800 yards per pound. The cones are around $\frac{1}{2}$ pound each but vary a little.

VOLUME 17, NUMBER 6 February, 1975

THREADING DRAFT

8						X	X												
7				X	X					X	X								
6			X	X								X	X						
5		X	X										X	X					
4	X	X													X	X			
3																	X	X	
2	X	X		X	X			X	X			X	X			X	X		
1		X	X		X	X		X	X			X	X		X	X		X	X

ABOUT THE THREADING DRAFT

There are 40 threads in one complete threading sequence. The loom heddles were threaded singly, one thread per heddle.

TREADLING SEQUENCE

Always treadle one tabby shot between each pattern shot as in any overshot pattern Treadle Number 1 four times with tabby between each shot. Use Treadle Number 2 four times with a tabby shot between each shot. Use each treadle 4 times with a tabby shot between each shot. The pattern treadle sequence is: 1, 2, 3, 4, 5, 6, 5, 4, 3, 2. This is the end of one treadling sequence. Repeat over and over as desired. There are 80 shots in one complete sequence.

The treadling of this fabric is not complicated, but it is very lengthy. Instead of writing out each treadle of the entire sequence, we will detail the first part of the pattern and then summarize the rest in a chart for you.

1. Treadle A -- Brown 20/2 Egyptian Cotton
2. Treadle 1 -- Vicuna Tan 2/18's Worsted
3. Treadle B -- Brown 20/2 Egyptian Cotton
4. Treadle 1 -- Vicuna Tan 2/18's Worsted
5. Treadle A -- Brown 20/2 Egyptian Cotton
6. Treadle 1 -- Vicuna Tan 2/18's Worsted
7. Treadle B -- Brown 20/2 Egyptian Cotton
8. Treadle 1 -- Vicuna Tan 2/18's Worsted

THIS IS ONLY A SMALL PART OF THE SEQUENCE.

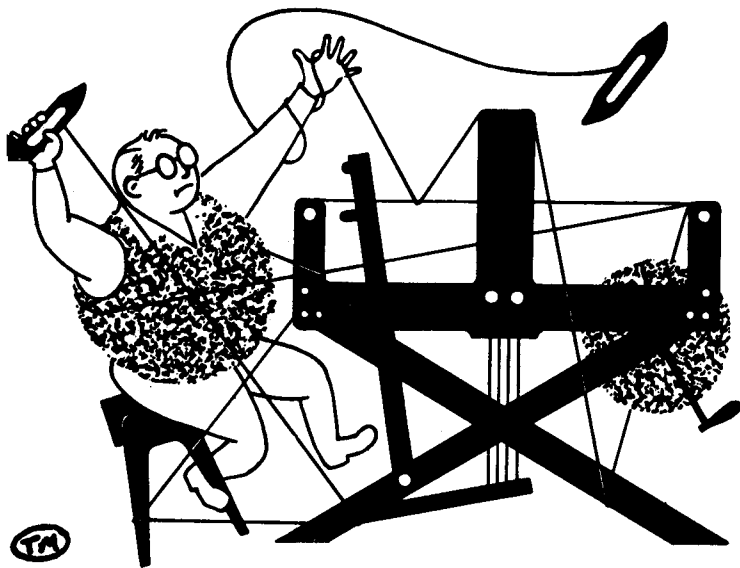
TREADLING SEQUENCE CHART:

X								Tabby
	X							Tabby
		0						Four Times
			0					Four Times
				0				Four Times
					0			Four Times
						0		Four Times
							0	Four Times
					0			Four Times
			0					Four Times
								Four Times
A	B	1	2	3	4	5	6	

COST OF THE FABRIC

There were 13 yards of warp. We used 2 pounds of Egyptian Cotton at \$8.00 per pound or a warp cost of \$16.00.

In the weft we used 1 pound 6 ounces of Egyptian Cotton for the tabby which cost \$11.00. We used 2 pounds 3 ounces of 2/18's worsted for the pattern in the weft. At \$9.60 per pound the worsted cost \$21.00. The two weft threads together came to \$32.00. We had 11 yards and 13 inches of finished fabric. This means that the weft cost \$2.71 per yard. The warp comes to \$1.23 per yard. The total cost per yard of this fabric is \$3.94.



drafts and designs

a guide for 5 to 12 harness weaves

VOLUME 17, Number 7

March, 1975

FIREFLIES

I recall the fireflies playing, flying around in circles in upstate New York and Pennsylvania. The night blinks bits of gold. This is an 8 harness weave for an upholstery fabric.

TIE-UP DRAFT:

8	0		0	0	0	
7		0	0	0		0
6	0				0	
5		0				0
4	0		0	0	0	
3		0	0	0		0
2			0		0	0
1				0	0	0
	1	2	3	4	5	6



THREADING DRAFT:

8	0	0					0	0		
7		0	0			0			0	0
6					0					0
5					0					0
4			0	0		0		0	0	
3			0			0		0		0
2				#			#		X	
1				#			#		X	

KEY TO THREADS IN THE WARP:

O--Dark Brown 2/18's worsted
#--Sunkiss Gold 2/18's worsted
X--Daffodil Yellow 2/18's worsted

REED USED:

A 16 dent reed was used for this fabric, and it was double sleyed, 2 ends per dent.

DRAFTS AND DESIGNS:

Published monthly (except July and August, by Robin & Russ Handweavers, 533 North Adams Street, McMinnville, Oregon 97128. SUBSCRIPTIONS: \$6.00 per year, Back issues or single copies 65¢ each, plus 10¢ postage. Yearly subscriptions start with the September issue. If you subscribe after September, back issues from then on will be mailed to you, unless you specify that you want your subscription to start with the next September issue.

VOLUME 17, Number 7. March, 1975

WARP:

The warp yarn is the beautiful and versatile 2/18's worsted from England. We keep this thread in stock as a standard item in 39 colors. It has about 4800 yards per pound and comes on approximately 1/2 lb. cones. This sample fabric used the following colors.

1. O is Color # 16, Dark Brown 2/18's.
2. # is Sunkiss Gold 2/18's Color # 17.
3. X is color # 7, Daffodil Yellow 2/18's.

WEFT:

The same three colors that were used in the warp were also used in the weft.

MORE ABOUT THE FABRIC:

This fabric has long floats on the back that make an interesting Tic-Tac-Toe design. It would be fun to use the float side as the "right" side in a use where snagging would not be a problem. The true right side of the fabric is very strong and would be well used for something that gets a great deal of wear.

The pattern is easy to weave. Be sure to use a temple to protect the selvages. None broke in weaving this sample.

The brown thread will take up faster than the yellow and orange in the warp because of the floats. You will want to keep proper tension on the lighter colored warp threads. You may just slip weighted lease sticks on the threads below the warp beam or use a length of 40" pipe. The weight from the pipe is just about right to keep the tension correct.

SOURCE OF IDEA FOR THIS SAMPLE:

In one of our Italian folios of samples, we found this one we liked. Phil Wilson, of Spokane, Washington drew it down, and from this came our sample for the month.

TREADLING SEQUENCE:

There are 32 shots in one complete pattern sequence:

1. Treadle # 1 - Dark Brown 2/18's
 2. Treadle # 2 - Dark Brown 2/18's
 3. Treadle # 1 - Dark Brown 2/18's
 4. Treadle # 2 - Dark Brown 2/18's
 5. Treadle # 1 - Dark Brown 2/18's
 6. Treadle # 2 - Dark Brown 2/18's
 7. Treadle # 3 - Daffodil 2/18's
 8. Treadle # 4 - Daffodil 2/18's
 9. Treadle # 1 - Dark Brown 2/18's
 10. Treadle # 2 - Dark Brown 2/18's
 11. Treadle # 5 - Dark Brown 2/18's
 12. Treadle # 6 - Dark Brown 2/18's
 13. Treadle # 1 - Dark Brown 2/18's
 14. Treadle # 2 - Dark Brown 2/18's
 15. Treadle # 4 - Daffodil 2/18's
 16. Treadle # 3 - Daffodil 2/18's
 17. Treadle # 1 - Dark Brown 2/18's
 18. Treadle # 2 - Dark Brown 2/18's
 19. Treadle # 1 - Dark Brown 2/18's
 20. Treadle # 2 - Dark Brown 2/18's
 21. Treadle # 1 - Dark Brown 2/18's
 22. Treadle # 2 - Dark Brown 2/18's
 23. Treadle # 3 - Sunkiss Gold 2/18's
 24. Treadle # 4 - Sunkiss Gold 2/18's
 25. Treadle # 1 - Dark Brown 2/18's
 26. Treadle # 2 - Dark Brown 2/18's
 27. Treadle # 5 - Dark Brown 2/18's
 28. Treadle # 6 - Dark Brown 2/18's
 29. Treadle # 1 - Dark Brown 2/18's
 30. Treadle # 2 - Dark Brown 2/18's
 31. Treadle # 4 - Sunkiss Gold 2/18's
 32. Treadle # 3 - Sunkiss Gold 2/18's
- END OF ONE COMPLETE PATTERN REPEAT.

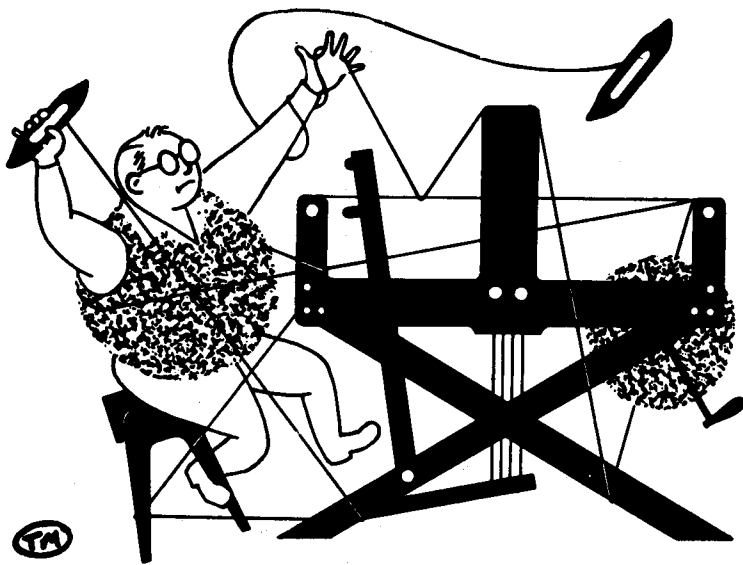
Repeat over and over as desired.

COST OF THE FABRIC:

We had a 12 yard warp that was 40" wide. Using a 16 dent reed sleyed double, this comes to 1280 warp ends in a 40" reed. We used 6 oz. each of Sunkiss Gold and Daffodil in the warp and 1 lb. 15 oz. of Dark Brown, or a total of 2 lbs. and 11 oz. This comes to \$25.80 or \$2.15 per yard.

In the weft, we used 4 oz. each of Daffodil and Sunkiss Gold and 1 lb. 10 oz. of Dark Brown in 11 yards and 21" of finished fabric, so the weft cost was \$1.71 per yard.

WARP COST PER YARD, 40" wide-----	\$ 2.15
WEFT COST PER YARD, -----	1.71
FABRIC COST PER YARD-----	3.86



drafts and designs

a guide for 5 to 12 harness weaves

VOLUME 17, Number 8.

April, 1975

A HARLEQUIN'S MASK

This geometry of black and white silk is created with six harnesses. Hold it up to the light and see the exciting increase in geometric patterns of the weave. This fabric would be appropriate for drapes, lampshades, any situation where light could travel through it. Or it would be beautiful in any color combinations as dress or hostess skirt fabric.

THREADING DRAFT:

6		X	X				X	X
5	X	X					X	X
4				X		X		
3			X		X			
2					0			
1					0			

KEY TO YARNS IN THE WARP:

X -- 4 ply black spun silk
0 -- 3 ply natural spun silk

TIE-UP DRAFT:

6		X		X			X	X
5	X		X				X	X
4			X	X		X		X
3			X	X	X		X	
2	X	X				X		X
1	X	X			X		X	
	1	2	3	4	5	6	7	8



WARP THREADS USED:

Two silks are used in the warp. The glossy black, finer silk is 4 ply. The heavier natural silk thread is a nice, thick 3 ply. This fabric would be beautiful also woven in blends of colored yarns.

WEFT THREADS USED:

The same two silk threads are used in both warp and weft.

REED USED:

A 15 dent reed was used and it was sleyed with two or three ends of silk per dent. See below for details of correct sleying of this fabric.

DRAFTS AND DESIGNS

Published monthly (except July and August) by Robin and Russ Handweavers, 533 N. Adams St., McMinnville, Oregon.

SUBSCRIPTIONS: \$6.00 per year. Back issues or single copies, 65¢ each. Yearly subscriptions start with the September issue. If you subscribe after September, back issues from then on will be mailed to you, unless you specify that you want your subscription to start with the next September issue.

VOLUME 17, Number 8. April 1975

SLEYING THE REED:

Sley 3 or 4 threads of the heavier 3 ply natural silk first and last for reinforced selvages if you wish. To do this pattern, sley the reed as follows:

- First dent: Two ends black silk
- Second dent: Two ends black silk
- Third dent: Two ends black silk and one end of natural silk together (3)
- Fourth dent: One end of natural silk and two ends of black silk together (3)
- Fifth dent: Two ends black silk
- Sixth dent: Two ends black silk

This ends one repeat of the slewing pattern. Continue repeating this series over and over across the entire reed.

Sley selvage threads one end per dent.

TREADLING SEQUENCE:

There are 24 shots in each complete pattern repeat. There are 6 shots of the heavier natural 3 ply silk together and then 18 shots of the finer 4 ply black spun silk.

1. Treadle #4 - black silk
2. Treadle #3 - black silk
3. Treadle #2 - black silk
4. Treadle #1 - black silk
5. Treadle #4 - black silk
6. Treadle #3 - black silk
7. Treadle #5 - natural silk
8. Treadle #6 - natural silk
9. Treadle #7 - natural silk
10. Treadle #8 - natural silk
11. Treadle #5 - natural silk
12. Treadle #6 - natural silk
13. Treadle #4 - black silk
14. Treadle #3 - black silk
15. Treadle #2 - black silk
16. Treadle #1 - black silk
17. Treadle #4 - black silk
18. Treadle #3 - black silk
19. Treadle #4 - black silk
20. Treadle #3 - black silk
21. Treadle #2 - black silk
22. Treadle #1 - black silk
23. Treadle #4 - black silk
24. Treadle #3 - black silk

END OF ONE COMPLETE TREADLING UNIT.

Repeat over and over as desired.

COST OF THE FABRIC:

We made a 14 yard warp that was 40" wide. We used 1 pound 6 ounces of the 3 ply natural silk. At \$9.60 per pound that cost \$13.20. There was 1 pound 2 ounces of the 4 ply black silk at \$12.00 per pound. The black silk warp cost \$13.50. The total cost of the warp is \$26.70 or \$1.98 per yard.

In the weft we used 2 pounds 4 ounces of the three ply natural silk and at \$9.60 per pound this comes to \$21.85. The finer, black silk weft weighed 1 pound 4 ounces. Since this silk costs \$12.00 per pound that comes to \$15.00. The total cost of the weft was \$36.85. We had 10 $\frac{3}{4}$ yards of finished fabric. The cost of the weft was \$3.43 per yard.

WARP COST PER YARD	-----	\$1.98
WEFT COST PER YARD	-----	\$3.43
FABRIC COST PER YARD	-----	\$5.41

MORE ABOUT THE YARNS:

The softly lustrous, natural white silk we used in both warp and weft is actually a 24 ply yarn. Each of the 3 strands that are plied together have 8 very fine threads of silk twisted together. This silk is finest quality and very strong. It is excellent for warp and for weft and can even be used for elegant macrame'. It also will dye beautifully. This beautiful, natural silk has 1600 yards per pound and comes on cones with $\frac{1}{2}$ pound to 2 pounds weight. They really vary in size. The cost is \$9.60 per pound.

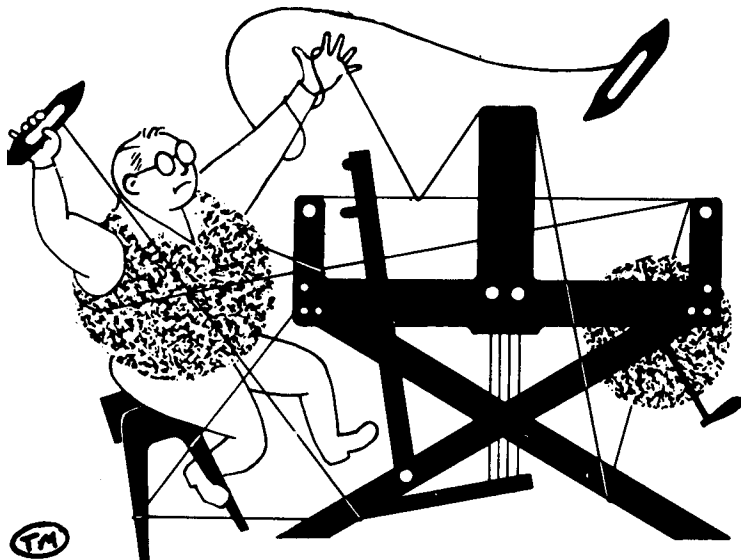
We are pleased to have located this black silk. It is richly glossy and has that scrunchy texture that you feel in silk that has really long fibers. This yarn too is excellent for both warp and weft. It is a superb quality of silk and costs \$12.00 per pound.

MORE ABOUT THE FABRIC:

Where but in handweaving and very expensive commercial fabrics can you find excellent quality silk fabrics now days? Isn't it wonderful that we can have these luxurious cloths and experience the joys of creativity both. AND they don't even cost very much!

We recommend that in weaving this fabric you use a firm, even, double beat. Lease sticks were used during the weaving in back of the harnesses to keep threads even and straighten out any crossed threads. During the heddle threading process a sheet was placed over the warp beam so that the individual black silk threads could be more easily seen against the light background.

If you put in three or four threads at each side for selvages, thread them alternating on harnesses 7 and 8. Then tie up harness 7 to every other treadle and harness 8 to every other treadle.



drafts and designs

a guide for 5 to 12 harness weaves

Volume 17, Number 9 May, 1975

JANICE SUSAN'S DOUBLEWEAVE TARTAN

This 8 harness doubleweave twill would be beautiful as a car robe. It is tartan on one side and warm brown twill on the other. Robin and Russ's daughter, Janice, designed this fabric for a jacket. It will team with the tartan that stars in Warp and Weft issue, November 1974. The 4 harness fabric is the same twill plaid and will be used for a skirt. This doubleweave tartan is a line-it-as-you-weave-it fabric.

TIE-UP DRAFT:

8					0	0	0
7	0		0	0	0	0	0
6			0	0	0		
5	0	0	0	0	0		0
4	0	0	0				
3	0	0	0	0		0	0
2	0	0					0
1	0	0		0		0	0
	1	2	3	4	5	6	7

THE WARP:

Our warp is all 12/2 worsted, finest quality Fabri-type yarn. There are 3,300 yards per pound. In this fabric we used Hot Mustard, Natural Scoured White, and lots of Cocoa Brown.

THE WEFT:

The same yarns were used in the weft.

THE REED:

We used a 12 dent reed sleyed 4 ends per dent for 48 ends per inch. This makes a really thick and interesting warp.



MORE ABOUT WEAVING THIS FABRIC:

We put on a 44½" warp 14 yards long. We like to use sectional warping for fabrics of this length. We used two spool racks since there are 96 threads in a 2" section. There was some breakage of the warp threads as they entered the tension box from the spool racks because of the angle of the threads. This could probably be eliminated by hanging a section of reed between the spool rack and the tension box. Sley this reed two ends per dent and the threads would be drawn toward the tension box in two stages with less stress.

DRAFTS AND DESIGNS

Published monthly (except July and August) by Robin & Russ Handweavers, 533 N. Adams St., McMinnville, Oregon.

Subscriptions: \$6.00 per year. Back issues or single copies, 65¢ each. Yearly subscriptions start with the September issue. If you subscribe after September, back issues from then on will be mailed to you, unless you specify that you want your subscription to start with the next September issue.

VOLUME 17, NUMBER 9 MAY 1975

COST OF THE FABRIC:

The warp used 1 lb. 3 oz. natural, 1 lb. 6 oz. gold, & 5 lb. 6 oz. brown. That makes 7 lb. 15 oz. at \$9.60 per pound. The weft used 2 lb. 4 oz. natural, 1 lb. 1 oz. gold & 3 lb. 4 oz. brown to total 6 lb. 9 oz. Our 14 yd. warp wove up to 11 yd. 13 in. finished fabric. Quite a take up!
 WARP COST PER YARD - - - - - \$6.70
 WEFT COST PER YARD - - - - - \$5.56
 FABRIC COST PER YARD - - - - - \$12.26

THREADING DRAFT:

8	B	B	B	B	B	B	B	B	B	B	B	B
7	B	B	G	G	W	W	W	W	G	G	B	B
6	B	B	B	B	B	B	B	B	B	B	B	B
5	B	B	G	G	W	W	W	W	G	G	B	B
4	B	B	B	B	B	B	B	B	B	B	B	B
3	B	B	G	G	W	W	W	G	G	G	B	W
2	B	B	B	B	B	B	B	B	B	B	B	B
1	B	G	G	G	W	W	W	G	G	B	B	W

KEY FOR THREADING DRAFT:

W = Natural Scoured 12/2 Worsted
 B = Cocoa Brown 12/2 Worsted
 G = Hot Mustard 12/2 Worsted

The threading draft is simpler than it looks. It is a plaid threaded for a twill weave with a brown thread between each plaid threads.

TREADLING SEQUENCE:

Treadle for a simple twill on 8 harnesses, 1, 2, 3, 4, 5, 6, 7, 8 over and over for the length of your fabric.

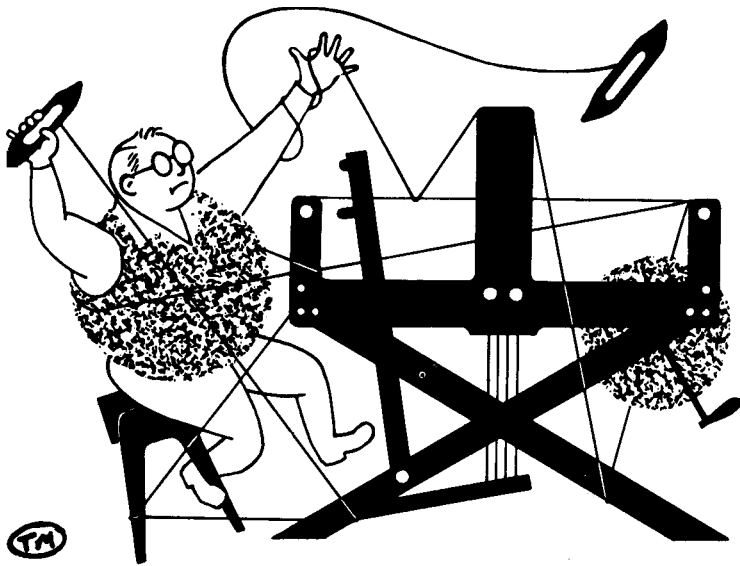
We came up with different systems for remembering the color sequence in an easy form. Think of the plaid and just throw a brown shuttle between each plaid shot. Treadles # 1, 3, 5 & 7 will always be plaid colors. Treadles # 2, 4, 6 & 8 will always be brown.

Read the treadling sequence chart below as you would treadle the twill weave: 1., 2., 3., 4., etc.

<u>Treadle #</u>	<u>Color</u>	<u>Treadle #</u>	<u>Color</u>
1. T # 1	Nat. White	2. T # 2	Brown
3. T # 3	Nat. White	4. T # 4	Brown
5. T # 5	Brown	6. T # 6	Brown
7. T # 7	Brown	8. T # 8	Brown
9. T # 1	Brown	10. T # 2	Brown
11. T # 3	Brown	12. T # 4	Brown
13. T # 5	Brown	14. T # 6	Brown
15. T # 7	Brown	16. T # 8	Brown
17. T # 1	Brown	18. T # 2	Brown
19. T # 3	Mustard	20. T # 4	Brown
21. T # 5	Mustard	22. T # 6	Brown
23. T # 7	Mustard	24. T # 8	Brown
25. T # 1	Mustard	26. T # 2	Brown
27. T # 3	Mustard	28. T # 4	Brown
29. T # 5	Mustard	30. T # 6	Brown

31. T # 7	Mustard	32. T # 8	Brown
33. T # 1	Mustard	34. T # 2	Brown
35. T # 3	Mustard	36. T # 4	Brown
37. T # 5	Nat. White	38. T # 6	Brown
39. T # 7	Nat. White	40. T # 8	Brown
41. T # 1	Nat. White	42. T # 2	Brown
43. T # 3	Nat. White	44. T # 4	Brown
45. T # 5	Nat. White	46. T # 6	Brown
47. T # 7	Nat. White	48. T # 8	Brown
49. T # 1	Nat. White	50. T # 2	Brown
51. T # 3	Nat. White	52. T # 4	Brown
53. T # 5	Nat. White	54. T # 6	Brown
55. T # 7	Nat. White	56. T # 8	Brown
57. T # 1	Nat. White	58. T # 2	Brown
59. T # 3	Nat. White	60. T # 4	Brown
61. T # 5	Nat. White	62. T # 6	Brown
63. T # 7	Nat. White	64. T # 8	Brown
65. T # 1	Mustard	66. T # 2	Brown
67. T # 3	Mustard	68. T # 4	Brown
69. T # 5	Mustard	70. T # 6	Brown
71. T # 7	Mustard	72. T # 8	Brown
73. T # 1	Mustard	74. T # 2	Brown
75. T # 3	Mustard	76. T # 4	Brown
77. T # 5	Mustard	78. T # 6	Brown
79. T # 7	Mustard	80. T # 8	Brown
81. T # 1	Mustard	82. T # 2	Brown
83. T # 3	Brown	84. T # 4	Brown
85. T # 5	Brown	86. T # 6	Brown
87. T # 7	Brown	88. T # 8	Brown
89. T # 1	Brown	90. T # 2	Brown
91. T # 3	Brown	92. T # 4	Brown
93. T # 5	Brown	94. T # 6	Brown
95. T # 7	Brown	96. T # 8	Brown

END OF ONE COMPLETE PATTERN REPEAT.
 Repeat over and over as desired.



drafts and designs

a guide for 5 to 12 harness weaves

THE WARM BLUES

VOLUME 17, Number 10, June, 1975

This beautiful suiting fabric or upholstery fabric is very simple to weave. It becomes a very rich, lively fabric as the deep blue mixes with the flecks of cool red. The threads used are excellent quality worsted and cotton and would remain fresh looking for years of wear.

THREADING DRAFT:

5				X
4	X			X
3	0	0	0	0
2	0	0	0	0
1				X

KEY TO THREADING DRAFT:

0 -- 20/2 Chicory cotton
X -- 12/2 Dark Navy worsted

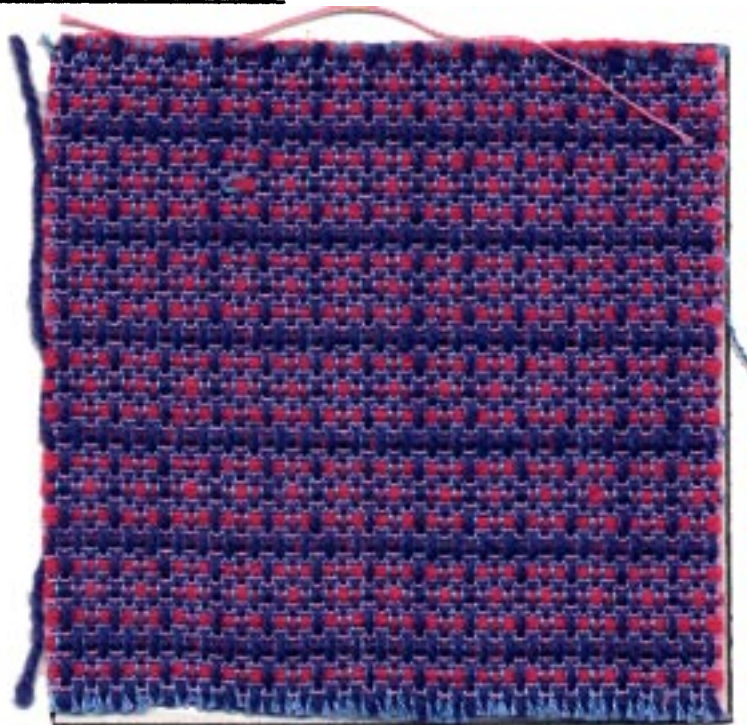
TIE-UP DRAFT:

5	0	0	0		
4		0	0	0	
3	0		0		
2	0	0	0		
1	0				
	1	2	3	4	5

THE WARP:

In the warp we used two threads. The fine thread is 20/2 Egyptian cotton, mercerized and gassed to create a strong, glossy thread. The Egyptian cotton color is Chicory, color number 1291.

The thicker warp thread is 12/2 worsted, a beautiful quality, tightly spun all wool yarn. The color is Dark Navy, color #3.



THE WEFT:

In the weft we used two different colors of the same type of threads as were used in the warp.

French Rose, color # 1232, was chosen for the 20/2 mercerized Egyptian cotton in the weft. The second weft yarn is again 12/2 worsted and this time Dark Pink, color #39. The Dark Pink worsted yarn was wound double on the shuttle spool to create those nice ridges of texture in the fabric.

Both of these yarns are available in many colors if you wish to create your own color combination to this fabric.

DRAFTS AND DESIGNS

Published monthly (except July and August) by Robin and Russ Handweavers, 533 N. Adams St., McMinnville, Oregon.

SUBSCRIPTIONS: \$6.00 per year. Back issues or single copies, 65¢ each. Yearly subscriptions start with the September issue. If you subscribe after September, back issues from then on will be mailed to you, unless you specify that you want your subscription to start with the next September issue.

VOLUME 17, Number Ten, June, 1975

REED USED:

For this project we used a 15 dent reed. It was sleyed with three ends per dent. Each dent holds 2 threads of 20/2 Egyptian cotton and one thread of 12/2 worsted.

TREADLING SEQUENCE:

The pattern of the use of the weft yarns as you treadle is first two shots of 20/2 Egyptian cotton and then one shot of 12/2 worsted wound double on the spool. This 2 cotton, 1 worsted rhythm is continued through out the fabric as the treadling changes.

You will always throw your shuttle of cotton while treadling #1 and #3. You will always throw a shuttle of doubled worsted on treadles #4, #5 and #2.

Use the following treadling sequence:

1. Treadle #1 -- French Rose 20/2 cotton
2. Treadle #3 -- French Rose 20/2 cotton
3. Treadle #4 -- Dark Pink 12/2 worsted, doubled on the spool
4. Treadle #3 -- French Rose 20/2 cotton
5. Treadle #1 -- French Rose 20/2 cotton
6. Treadle #5 -- Dark Pink 12/2 worsted, doubled on the spool
7. Treadle #1 -- French Rose 20/2 cotton
8. Treadle #3 -- French Rose 20/2 cotton
9. Treadle #4 -- Dark Pink 12/2 worsted, doubled on the spool
10. Treadle #3 -- French Rose 20/2 cotton
11. Treadle #1 -- French Rose 20/2 cotton
12. Treadle #2 -- Dark Pink 12/2 worsted, doubled on the spool

THIS IS THE END OF ONE COMPLETE SEQUENCE.

Repeat over and over for the length of your warp.

ABOUT THE DESIGN:

The excitement of this design comes from a combination of beautifully contrasting colors and shadows created by the rhythms of thick then thin yarns. The texture, visible in a zillion tiny shadows across the fabric, is amplified by the contrast of light blue and light pink cotton played against the darker blue and pink of the worsted.

It would be fun to try reversing the colors

so that the cotton, which is usually the deep yarn, is darker. Then if the worsted is noticeably lighter the textural effect may even be increased by the pseudoshadows of the contrasting colors. Another way to play with the texture of this fabric would be to increase the contrast in size of the yarns used. The sample fabric of this design used a 1/19 acrylic thread, half the size of the cottons we used in this final fabric. A 2/40 cotton might be used also. The next obvious variation would be to experiment with using thicker worsted yarns.

It has been said that the same design in the hands of 10 different weavers will produce 10 different fabrics. That is the fun of designing. If you like the fabric in this issue of Drafts and Designs, and choose to make your own version with changes in color, yarns, treadling or tie-up please send us a bit of your final fabric. We'd love to see the variations. It's chain creativity, with each person building on and adding her own touch.

MORE ABOUT THE THREADS:

The 20/2 mercerized, gassed Egyptian cotton is an old stand by with us. It is an excellent warp or weft. The soft luster and 88 colors make it easy to use in designing all kinds of really beautiful fabrics. It is strong and beautiful. There are 8400 yard per pound and this yarn comes on 1/2 pound cones at \$8.50 per pound or \$4.25 per cone.

The 12/2 worsted is a new weight of an old standard yarn. This is the big brother to the 2/18's worsted that many of you are familiar with. This yarn comes on 1/2 pound cones. There are 3360 yards per pound and the cost is \$9.60 per pound.

COST OF THE FABRIC:

We made a 14 yard warp 40" wide with 45 ends per inch in a 15 dent reed. The warp took 2 pounds 2 ounces 20/2 Egyptian cotton. At \$8.50 per pound that is \$18.06 for the cotton. We used 2 pounds 8 ounces of 12/2 worsted. It is \$9.60 per pound which comes to \$14.00. The warp cost \$32.06 for 14 yards or \$2.29 per yd.

The length of the woven fabric was 12 yards. In it we used 14 oz. 20/2 Egyptian cotton and 2 pounds 1/2 ounce 12/2 worsted. The cotton used for weft cost \$7.44 and the worsted cost \$19.50. For the finished 12 yards, the weft cost \$26.64 or \$2.22 per yard.

WARP COST PER YARD, 40" wide ---- \$2.29

WEFT COST PER YARD, 39 1/2" wide --- \$2.22

FABRIC COST PER YARD ----- \$4.51

The only weaving problem that might occur is a little looping of the cotton because the threads are so close. Keep the weft thread a little tighter than usual to lessen this problem.