

drafts and designs

a guide for 5 to 12 harness weaves

VOLUME 18, Number 1, September, 1975

EFFERVESCENT FIZZ:

An exciting 10 harness weave that we liked so well, we thought you might enjoy it in a bed-spread, or in drapes, and other such uses.

WARP:

Our warp is a 20/2 Egyptian Cotton which we have imported from England. We do have this cotton in about 85 to 90 colors in our 20/2 size.

WEFT:

There are two threads used in the weft. One is the same Orange Egyptian Cotton as was used in the warp, and this was used for the tabby thread.

And, for the other thread, we used a champagne fizz color in the 8 cut rayon chenille. This was the pattern thread.

REED USED:

A 15 dent reed was used, and it was double sleyed, 2 ends per dent, or 30 threads per inch.

THREADING DRAFT

10						X X X	X X X		
9						X X X	X X X		
8	X X X					X X X			
7	X X X					X X X			
6		X X X				X X X			
5		X X X				X X X			
4			X X X	X X X					
3			X X X	X X X					
2	X	X	X	X	X	X	X	X	X
1	X	X	X	X	X	X	X	X	X



DRAFTS AND DESIGNS:

Published monthly (except July and August, by Robin & Russ Handweavers, 533 North Adams Street, McMinnville, Oregon 97128. SUBSCRIPTIONS: \$6.00 per year, Back issues or single copies 65¢ each, plus 10¢ postage. Yearly subscriptions start with the September issue. If you subscribe after September, back issues from then on will be mailed to you, unless you specify that you want your subscription to start with the next September issue.

VOLUME 18, Number 1, September, 1975

TIE-UP DRAFT:

10										0
9									0	
8	0	0	0	0						0
7	0	0	0	0					0	
6			0	0	0	0				0
5			0	0	0	0			0	
4					0	0	0	0		0
3					0	0	0	0	0	
2		0		0		0		0		0
1	0		0		0		0		0	
	1	2	3	4	5	6	7	8	9	10
									A	B

19. Treadle # B, 20/2 Orange
20. Treadle # 4, 8 cut chenille
Repeat 17 to 20--2 times, 8 shots
21. Treadle # A, 20/2 Orange
22. Treadle # 5, 8 cut chenille
23. Treadle # B, 20/2 Orange
24. Treadle # 6, 8 cut chenille
Repeat 21 to 24--2 times--8 shots
25. Treadle # A, 20/2 Orange
26. Treadle # 7, 8 cut chenille
27. Treadle # B, 20/2 Orange
28. Treadle # 8, 8 cut chenille
Repeat 25 to 28--2 times--8 shots
29. Treadle # A, 20/2 Orange
30. Treadle # 1, 8 cut chenille
31. Treadle # B, 20/2 Orange
32. Treadle # 2, 8 cut chenille

END OF ONE COMPLETE PATTERN REPEAT, Do repeat over and over from # 1 again.

COST OF THE THREADS USED:

The 20/2 Egyptian Cotton comes in 85 colors, on 1/2 lb. cones. It has 8400 yards per lb., and is \$8.50 per lb. The 8 cut rayon chenille has approximately 1,000 yards per lb. There are about 20 colors of this weight on hand. It comes on about 1/2 lb. tubes, and it is \$4.00 per pound, or \$2.00 per 8 oz. tube.

COST OF THE FABRIC:

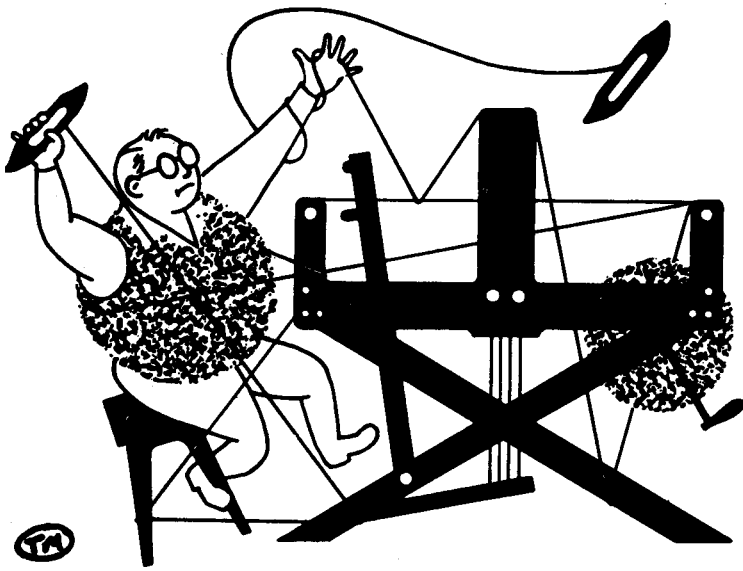
In our 14 yard warp, 40" wide, we used 2 lbs. and 6 oz. of 20/2 Orange Egyptian Cotton. The total warp cost for this was \$18.59, or the cost per yard was \$1.33. In the weft, we used 1 lb. 4 oz. of 20/2 Orange Egyptian Cotton, and we used 8 pounds and 9 oz. of rayon chenille in the 12 yards of finished fabric. The total weft cost was \$44.87, or the cost per yard was \$3.74 for the weft.

WARP COST PER YARD, 40" Wide--	\$ 1.33
WEFT COST PER YARD-----	3.74
FABRIC COST PER YARD-----	\$ 5.07

WIDTH AND LENGTH OF WARP

We had a 14 yard warp, 40" wide with 1200 warp ends. From this, we had approximately 12 yards of finished fabric.

- TREADLING SEQUENCE:
- There are 88 shots in one complete pattern repeat. Of these 88, 44 of them are tabby shots which are alternated on the A and B or the # 9 and #10 treadles. The other 44 shots are pattern threads which you will find are spread out through the treadles 1 to 8.
1. Treadle # A, 20/2 Orange
 2. Treadle # 7, 8 cut chenille
 3. Treadle # B, 20/2 Orange
 4. Treadle # 8, 8 cut chenille
Repeat 1 to 4, 2 times--8 shots
 5. Treadle # A, 20/2 Orange
 6. Treadle # 5, 8 cut chenille
 7. Treadle # B, 20/2 Orange
 8. Treadle # 6, 8 cut chenille
Repeat 5 to 8, 2 times--8 shots
 9. Treadle # A, 20/2 Orange
 10. Treadle # 3, 8 cut chenille
 11. Treadle # B, 20/2 Orange
 12. Treadle # 4, 8 cut chenille
Repeat 9 to 12, 2 times--8 shots
 13. Treadle # A, 20/2 Orange
 14. Treadle # 1, 8 cut chenille
 15. Treadle # B, 20/2 Orange
 16. Treadle # 2, 8 cut chenille
Repeat 13 to 16--8 times--32 shots.
 17. Treadle # A, 20/2 Orange
 18. Treadle # 3, 8 cut chenille



drafts and designs

a guide for 5 to 12 harness weaves

VOLUME 18, Number 2, October, 1975.

ELEGANCE

This six (6) harness weave is an outstanding luxury fabric, quite similar to many of the fabrics found in the expensive "Elegance" magazine. Should be outstanding in coat material.

THREADING:

6		X		W
5		X		W
4		X		W
3		X	B	
2		X	B	
1	X		B	

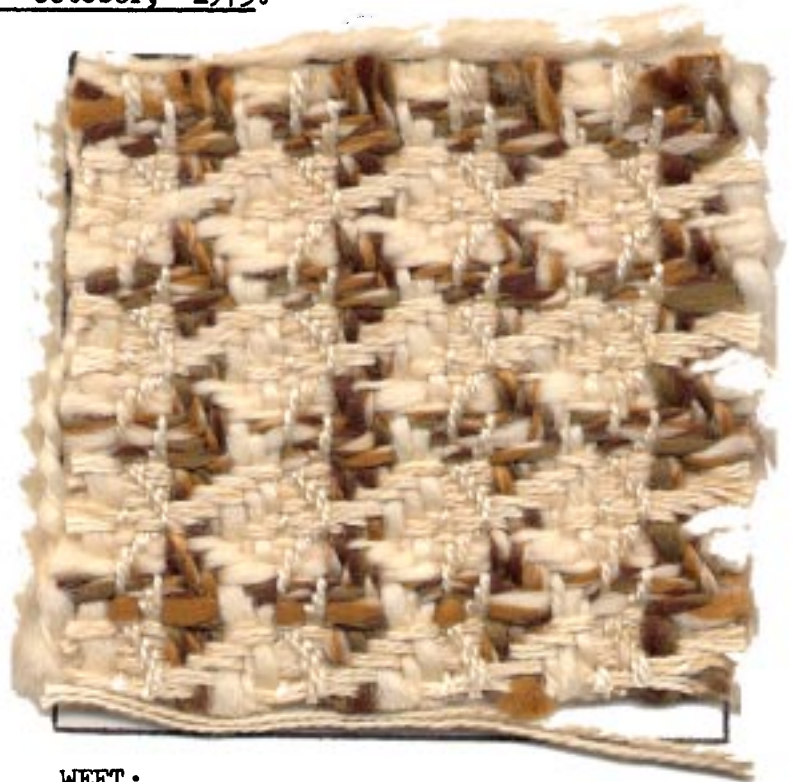
KEY TO THREADS IN THE WARP:

- X--Tussah Silk & Viscose, 2 ply.
- B--Brown, Camel & Natural, 2 ply Flake Wool Yarn
- W--White, 2 ply flake wool yarn

WARP:

There are 3 different threads used in the Warp.

- X--A 2 ply Tussah Silk and Viscose rayon yarn with about 1500 yards per pound.
- B--Brown, Camel and Natural in a 2 ply Flake Wool Yarn, with 475 yards per lb.
- W--A White, 2 ply flake wool yarn, also with 475 yards per lb.



WEFT:

The same three threads that are used in the warp are also used in the weft. However, one thread, the 2 ply Tussah Silk and Viscose thread has been doubled, 2 ends wound together as one thread on your bobbin.

REED USED:

A 10 dent reed was used, with a special sleying of the reed. The 2 different wool yarns in the warp are single sleyed, one end per dent, and the tussah silk and viscose is sleyed 2 ends per dent. With this special sleying of the reed, it comes to about 13 to 14 threads per inch.

DRAFTS AND DESIGNS:

Published monthly (except July and August, by Robin & Russ Handweavers, 533 North Adams Street, McMinnville, Oregon 97128. SUBSCRIPTIONS: \$6.00 per year, Back issues or single copies 65¢ each, plus 10¢ postage. Yearly subscriptions start with the September issue. If you subscribe after September, back issues from then on will be mailed to you, unless you specify that you want your subscription to start with the next September issue.

VOLUME 18, Number 2, October, 1975.

WARP WIDTH AND LENGTH:

Our warp was set up 39-1/2" wide on the loom, with a 14 yard warp. It wove down to about 36" wide on the loom. And, there is quite a bit of take up in the woven length, and it was just a couple of yards less than the warp length. We were just two inches shy of 12 yards of finished fabric.

TIE-UP DRAFT:

6	0	0	0					0	
5			0	0	0			0	
4				0	0	0			0
3					0	0	0	0	
2	0					0	0		0
1	0	0					0	0	
	1	2	3	4	5	6	A	B	
							7	8	

TREADLING SEQUENCE:

If you have 12 treadles on your loom, I would suggest a walking treadling, treadling 1,2,3,4,5,6 with the doubled tussah silk & viscose, 7, 8, 9, with the brown, camel and natural 2 ply flake wool, and 10, 11, and 12 with the 2 ply white flake yarn. However, many of your looms might have only 8 or 10 treadles, so I will give you the conventional treadling.

- 1.. Treadle # 1, tussah silk & viscose, doubled on bobbin
- 2.. Treadle # 2, tussah silk & viscose, doubled on bobbin
- 3.. Treadle # 3, tussah silk & viscose, doubled on bobbin
- 4.. Treadle # 4, tussah silk & viscose, doubled on bobbin
- 5.. Treadle # 5, tussah silk & viscose, doubled on bobbin
- 6.. Treadle # 6, tussah silk & viscose, doubled on bobbin
- 7.. Treadle # 3, brown, camel & natural
- 8.. Treadle # 2, brown, camel & natural
- 9.. Treadle # 1, brown, camel & natural

- 10... Treadle # 6, white, wool flake
 - 11... Treadle # 5, white, wool flake
 - 12... Treadle # 4, white, wool flake
- END OF ONE COMPLETE PATTERN REPEAT.
Repeat over and over as desired.

COST OF THE THREADS USED:

The two (2) wool threads, each a 2 ply flake wool have approximately 475 yards per lb., and are \$6.80 per lb. These are both beautiful Phoenix yarns from Ireland.

The two ply natural tussah silk & viscose combination is a thread we found in a single ply in England, and which we had sent out and two plied, so it could be used for warp and weft. It has 1500 yards per lb., and is \$6.00 lb.

COST OF THE FABRIC:

We used in the warp, 2 lbs. 8 oz. of the tussah silk & viscose; 3 lbs. 12 oz. of the white wool flake; and 3 lbs. 14 oz. of the brown, camel & natural wool. The warp cost for 14 yards was \$66.85, or \$4.78 per yard.

In the weft, we used in each yard of fabric, about 6 oz. of tussah silk & viscose, and slightly less than 4 oz. of each of the two flake wool yarns. Thus, our weft cost per yard was \$5.12.

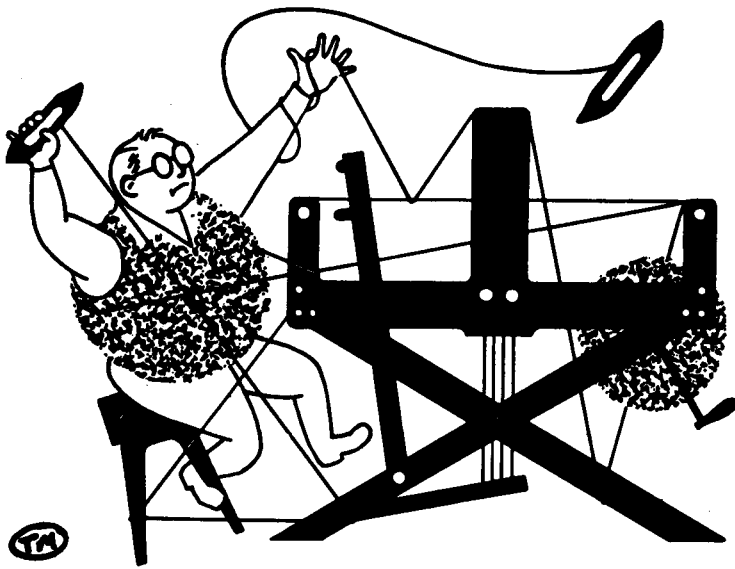
WARP COST PER YARD----- \$ 4.78
 WEFT COST PER YARD----- 5.12
 Fabric cost per yard----- \$ 9.90

SOURCE OF IDEA FOR THIS SAMPLE:

We had a workshop this summer with Hiliary Chetwynd, and we had about one half of our projects in multiple harness weaves. This is one of her drafts which we did not set-up and weave in the workshop, but your editor experimented with the rest of the drafts suggested after the workshop was over. We have two or three other samples that we want to share with you in future issues. And some of these little drafts are found in her book, SIMPLE WEAVING, which has some most interesting patterns in it, and which sells for \$3.50 per copy. I honestly felt that this workshop, with the Leno Weaves, and with the multiple harness drafts was one of the most inspirational I've ever had a chance to participate in.

SPECIAL NOTICE ABOUT TREADLING:

Be sure to always beat with the shed open. Open your shed, beat, and with the beater still forward, change to the next treadle and beat again.



drafts and designs

a guide for 5 to 12 harness weaves

VOLUME 18, Number 3, November, 1975.

PINK PUFF 'N STUFF

This double diamond design uses some of the warp threads to create puffs of the pink plain woven shapes. The three dimensional addition to the design is really interesting. It has long floats on one side and would be exciting as a room divider. Use it lined for elegant dresses and hostess skirts.

TIE-UP DRAFT:

10	X	X	X	X	X	X	X	X		
9	X	X	X	X	X	X				
8	X	X	X	X	X					
7	X	X	X	X						
6	X	X	X							
5	X	X								
4	X									
3										
2									X	
1								X		
	1	2	3	4	5	6	7	8	9	10



THREADING DRAFT:

10						0	0	0	0	0										
9							0										0			
8								0										0		
7									0										0	
6										0										
5											0									
4																				0
3			0	0	0															0
2			X	X	X	X	X	X	X	X	X	X	X	X	X	X	X	X	X	X
1			X	X	X	X	X	X	X	X	X	X	X	X	X	X	X	X	X	X

KEY TO THREADS IN THE WARP:

X -- Natural Biege Camel Hair and Wool Yarn
 0 -- Natural White 3 Ply Smooth Spun Silk

REED USED:

An 8 dent reed was used sleyed with 3 ends per dent, 2 threads of camel & wool yarn and one silk thread per dent.

DRAFTS AND DESIGNS

Published monthly (except July and August) by Robin and Russ Handweavers, 533 N. Adams St. McMinnville, Oregon.

SUBSCRIPTIONS: \$6.00 per year. Back issues or single copies, 65¢ each. Yearly subscriptions start with the September issue. If you subscribe after September, back issues from Sept. on will be mailed to you, unless you specify that you want your subscription to start with the next September issue.

VOLUME 18, Number 3, November, 1975.

WARP:

The warp contains two very different yarns. The biege yarn is a natural color created by mixing 50% camel and 50% wool. This is an 8 strand thread made with two fine two-ply yarns twisted together, then two of those yarns twisted together. There are about 2700 yards per pound on approximately one pound cones.

A beautiful smooth-spun silk thread is used as the other weft yarn. It is a three ply and is natural colored. It looks almost white in the fabric, but is actually quite creamy. There are 1600 yards per pound and the cones are 1½ to 2 pounds each.

WEFT:

The weft is two silk threads used as one. They are wound onto the bobbin together. These silks are only different in color. They are smooth 4 ply spun silk with 12,800 yards per pound. The cones vary wildly from 8 oz. to 2 lbs. in weight and small 4 oz. tubes are available. The colors used as weft are Baby Blush Pink and Peppermint Pink.

COST OF FABRIC:

We put a 14 yard warp on the loom 40" wide. For this warp we used 3 pounds 5½ ounces of the camel & wool yarn. It costs \$9.60 per pound, so we used \$32.10 of camel & wool yarn. The warp took 3 pounds of the heavy, natural spun silk. At \$9.60 per pound this comes to \$28.80. The 14 yards of warp cost \$60.90 or \$4.35 per yard of warp.

In the weft we used 13 ounces of each of the two colors of 4 ply spun silk. That is a total of 26 ounces of silk in the weft. At \$16.00 per pound that means our weft cost \$26.00.

From the 14 yards of warp, we could weave 12 yards and 24 inches of finished fabric. The weft, then, cost \$2.05 per yard. The finished fabric comes to \$6.40 per yard.
WARP COST PER YARD, 40" wide . . . \$4.35
WEFT COST PER YARD 2.05
FABRIC COST PER YARD \$6.40

TREADLING SEQUENCE:

This design used double treadling. Step on two treadles together to create one shed. You just alternate treadle 9 and 10 for plain weave and the other foot treadles the pattern. The rhythm is in sets of four.

This is a one shuttle fabric with two ends of silk wound together onto the bobbin.

Here is the treadling sequence:

- | | |
|-----------------------|-----------------------|
| 1. Treadles #1 & #9 | 33. Treadles #7 & #9 |
| 2. Treadles #1 & #10 | 34. Treadles #7 & #10 |
| 3. Treadles #1 & #9 | 35. Treadles #7 & #9 |
| 4. Treadle #10 | 36. Treadle #10 |
| 5. Treadles #2 & #9 | 37. Treadles #6 & #9 |
| 6. Treadles #2 & #10 | 38. Treadles #6 & #10 |
| 7. Treadles #2 & #9 | 39. Treadles #6 & #9 |
| 8. Treadle #10 | 40. Treadle #10 |
| 9. Treadles #3 & #9 | 41. Treadle #5 & #9 |
| 10. Treadles #3 & #10 | 42. Treadle #5 & #10 |
| 11. Treadles #3 & #9 | 43. Treadle #5 & #9 |
| 12. Treadle #10 | 44. Treadle #10 |
| 13. Treadles #4 & #9 | 45. Treadles #4 & #9 |
| 14. Treadles #4 & #10 | 46. Treadles #4 & #10 |
| 15. Treadles #4 & #9 | 47. Treadles #4 & #9 |
| 16. Treadle #10 | 48. Treadle #10 |
| 17. Treadles #5 & #9 | 49. Treadles #3 & #9 |
| 18. Treadles #5 & #10 | 50. Treadles #3 & #10 |
| 19. Treadles #5 & #9 | 51. Treadles #3 & #9 |
| 20. Treadle #10 | 52. Treadle #10 |
| 21. Treadles #6 & #9 | 53. Treadles #2 & #9 |
| 22. Treadles #6 & #10 | 54. Treadles #2 & #10 |
| 23. Treadles #6 & #9 | 55. Treadles #2 & #9 |
| 24. Treadle #10 | 56. Treadle #10 |
| 25. Treadles #7 & #9 | 57. Treadles #1 & #9 |
| 26. Treadles #7 & #10 | 58. Treadles #1 & #10 |
| 27. Treadles #7 & #9 | 59. Treadles #1 & #9 |
| 28. Treadle #10 | 60. Treadle #10 |
| 29. Treadles #8 & #9 | 61. Treadles #8 & #9 |
| 30. Treadles #8 & #10 | 62. Treadles #8 & #10 |
| 31. Treadles #8 & #9 | 63. Treadles #8 & #9 |
| 32. Treadle #10 | 64. Treadle #10 |

END OF ONE COMPLETE PATTERN REPEAT.

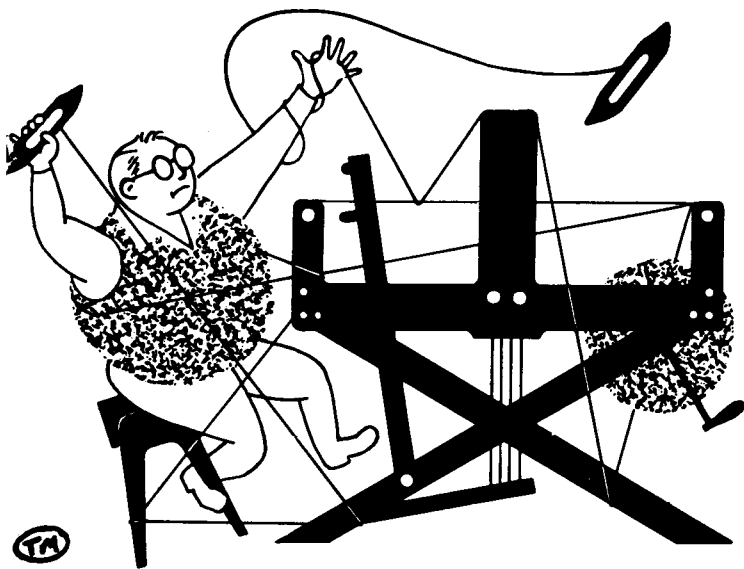
Repeat over and over as desired.

WEAVING THE FABRIC:

This fabric is surprisingly easy to weave. Accept the puffing as part of the design and don't fight it. You can use a temple if you wish. The treadling rhythm is simple and becomes natural quickly.

For a change in the design, cut the floats and use them and their clipped thread ends as pattern.

If you have a double back beam use it for the two different warp threads. Their differences in elasticity makes a difference in how fast they unwind. Or use a weighted lease stick in the sagging warp threads.



drafts and designs

a guide for 5 to 12 harness weaves

VOLUME 18, Number 4 December 1975

OCTOBER COLORS

This six (6) harness weave is a broken twill and a surprise development from our October design. Only the yarns are different to create this very different fabric. The great contrast in color between the natural silk and viscose yarn and the golden-orange range of the wool yarns really brings out the shooting star shape created by the twill weave.

This fabric could be great as a coat, upholstery fabric, pillows or an afghan.

THREADING:

6		X		T
5		X		T
4		X		T
3	X		O	
2	X		O	
1	X		O	

KEY TO THREADS IN THE WARP:

- X--Tussah Silk & Viscose, 2 ply.
- O--#24 Light Orange tapestry tones
- T--#29 Topaz tapestry tones

WARP:

There are three different threads used in the warp.

- X--2 ply Tussah Silk and Viscose rayon with about 1500 yards per pound.
- O--2 ply wool tapestry tones yarn in color #24 Light Orange, 440 yards per pound.
- T--The same 2 ply wool tapestry tones yarn, but in color #29, Topaz.



WEFT:

Two of the same threads from the warp are also used in the weft. The same 2 ply Tussah silk and viscose thread is used as weft, however it is doubled; that is two ends are wound together onto the bobbin and woven as one. The Light Orange 2 ply wool Tapestry Tones yarn, color #24 is the second weft thread. The third weft yarn is color #32, Golden Straw, another Tapestry Tones 2 ply wool yarn.

DRAFTS AND DESIGNS:

Published monthly (except July and August, by Robin & Russ Handweavers, 533 North Adams Street, McMinnville, Oregon 97128. SUBSCRIPTIONS: \$6.00 per year, Back issues or single copies 65¢ each, plus 10¢ postage. Yearly subscriptions start with the September issue. If you subscribe after September, back issues from then on will be mailed to you, unless you specify that you want your subscription to start with the next September issue.

VOLUME 18, Number 4 December 1975

REED USED:

A 10 dent reed was used with a special sleying of the reed. The two different colored wool yarns are sleyed singly, one end per dent. The Tussah silk and viscose thread is sleyed 2 ends per dent. With this special sleying of the reed, it comes to about 13 to 14 threads per inch.

TREADLING SEQUENCE:

If you have 12 treadles on your loom, I would suggest a walking treadling, treadling 1,2,3,4,5,6 with the doubled tussah silk & viscose, 7,8,9 with the Light Orange wool, and 10,11,12 with the Golden Straw wool. Many of you may have looms with only 8 or 10 treadles, so I will give you the conventional treadling.

1. Treadle #1 - tussah silk & viscose, doubled on the bobbin.
2. Treadle #2 - tussah silk & viscose, doubled on the bobbin.
3. Treadle #3 - tussah silk & viscose, doubled on the bobbin.
4. Treadle #4 - tussah silk & viscose, doubled on the bobbin.
5. Treadle #5 - tussah silk & viscose, doubled on the bobbin.
6. Treadle #6 - tussah silk & viscose, doubled on the bobbin.
7. Treadle #3 - wool Color #24, Lt Orange.
8. Treadle #2 - wool Color #24, Lt Orange.
9. Treadle #1 - wool Color #24, Lt Orange.
10. Treadle #6 - wool Color #32, G Straw.
11. Treadle #5 - wool Color #32, G Straw.
12. Treadle #4 - wool Color #32, G Straw.

END OF ONE COMPLETE PATTERN REPEAT.

Repeat over and over as desired.

Be sure to always beat with the shed open. Open your shed, beat, and with the beater still forward, change to the next treadle and beat again.

TIE-UP DRAFT:

6	0	0	0				0
5		0	0	0			0
4			0	0	0		0
3				0	0	0	0
2	0				0	0	0
1	0	0				0	0

1 2 3 4 5 6 7 8

A B

COST OF THE THREADS USED:

The two wool yarns, each a 2 ply tapestry yarn with 175 yards per 4 oz. tube at \$2.00 per tube. These yarns are excellent quality wool and are used for rya and flossa rugs, tapestries, upholstery and other uses. There are 45 colors of this line of English yarns.

The two ply natural tussah silk & viscose combination is a thread we found in a single ply in England. We had it two plied so it could be used for warp or weft. It has 1500 yards per pound, and is \$6.00 per pound.

COST OF THE FABRIC:

We put on 12 yards of warp and used 2 pounds 7 ounces of Tussah silk & Viscose, and 10 spools of each of the two colors of wool tapestry tones. The Tussah silk & Viscose costs \$6.00 per pound for \$12.75. Tapestry Tones is \$2.00 per 4 oz. spool. The 20 spools used for the warp costs \$40. The 12 yard warp came to \$52.75 or \$4.39 per yard of warp.

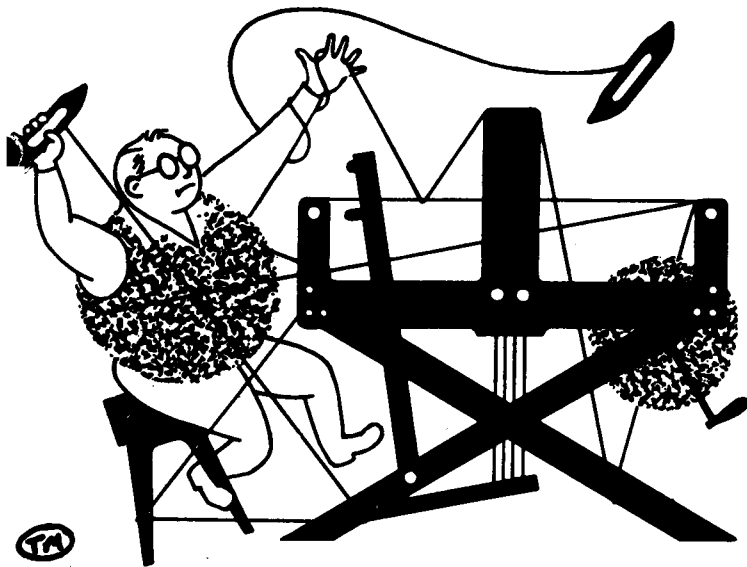
In the weft we used 4 pounds 14 ounces of 2 ply Tussah silk & Viscose. At \$6.00 per pound that is \$29.25. Again we used 10 spools of each color of Tapestry Tones in the weft, \$40.00. The finished fabric was 10 yards 26 inches long. The weft cost about \$6.50 per yard. The finished fabric costs \$10.89 per yard.

WARP COST PER YARD	\$4.39
WEFT COST PER YARD	\$6.50
FABRIC COST PER YARD	\$10.89

SOURCE OF IDEA FOR THIS SAMPLE:

Hiliary Chetwynd gave a workshop here at Robin and Russ Handweavers last summer. This outstanding class was for leno and multiple harness weaves. This design was developed from one of the warps that she suggested. Russ developed it into the two very different looking fabrics we used for this issue and the October issue of Drafts and Designs.

Many of Hiliary Chetwynd's fine ideas are enclosed in her little book, SIMPLE WEAVING, which sells for \$3.50 per copy.



drafts and designs

a guide for 5 to 12 harness weaves

VOLUME 18, Number 5

January, 1976

CHOCOLATE CREME

This month, we feature a 12 harness pattern, contrary to our normal 5 to 8 harness weaves, because there seems to be more and more interest in the multiple harness patterns.

THREADING DRAFT:

12											X
11						X	X				
10				X			X				
9				X				X			
8				X					X		
7				X						X	
6				X							X
5				X							X
4			X								X
3		X								X	
2	X										X
1											X

TIE-UP DRAFT

12	0				0	0					0	0
11				0	0					0	0	0
10			0	0					0	0	0	
9		0	0				0	0	0			
8	0	0				0	0	0				
7		0				0	0	0				0
6	0				0	0	0				0	
5				0	0	0				0		0
4			0	0	0				0		0	
3		0	0	0				0		0		
2	0	0	0				0	0				
1	0	0				0	0					0
	1	2	3	4	5	6	7	8	9	10	11	12



WARP: Our warp was a smooth 4 ply spun silk called "DARK CADBURY CHOCOLATE." It is an excellent warp thread, and has 12,800 yards per pound. This is a silk that we found in Scotland.

WEFT: Our weft is the same smooth 4 ply spun silk in a color which is called "BISQUIT BEIGE." This spun silk has 12,800 yards per lb., and is available on 4 oz. tubes of 3200 yards per tube.

DRAFTS AND DESIGNS:

Published monthly (except July and August, by Robin & Russ Handweavers, 533 North Adams Street, McMinnville, Oregon 97128.

SUBSCRIPTIONS: \$6.00 per year, Back issues or single copies 65¢ each, plus 10¢ postage. Yearly subscriptions start with the September issue. If you subscribe after September, back issues from then on will be mailed to you, unless you specify that you want your subscription to start with the next September issue.

VOLUME 18, Number 5 January, 1976

REED USED: We used a 12 dent reed, and sleyed it 4 ends per dent, or 48 threads per inch.

TREADLING SEQUENCE: The treadling sequence is a straight point twill treadling, exactly the same as the threading draft. Here is the treadling sequence written out, and each number represents one shot of weft thread. 1,2,3,4,5,6,7,8,9,10, 11,12,11,10,9,8,7,6,5,4,3,2, and repeat over and over.

COST OF THE THREADS USED:

Our 4 ply smooth, spun silk warp and weft has 12,800 yards per lb. It is \$16.00 per pound, or \$1.00 per ounce. It is available in 10 different colors, and is available in 4 ounce spools of 3200 yards per spool.

COST OF THE FABRIC:

We did a 12 yard warp, 40" wide, at 48 threads per inch. It took 1 lb. 13 oz. for the warp, so the warp cost was \$29.00 for the 12 yards or \$2.42 per yard.

In the weft we used 1 lb. and 10 oz of the Bisquit Beige, and finished up with 10 yards and 18" or 1-2 or actually 10-1/2 yards of fabric. And we had about 19 to 20" of warp left that we could not weave. Our weft cost was \$26.00 or the cost per yard was \$2.47 per yard.

WARP COST PER YARD, 40" wide--- \$ 2.42

WEFT COST PER YARD, ----- 2.47

FABRIC COST PER YARD----- \$ 4.89

MORE ABOUT THIS FABRIC:

There were some interesting things to tell you about this fabric.

For a while, we couldn't stop it from streaking, and finally with a tighter tension, we eliminated most of this. So,

we found we had to handle this like a linen, with quite a tight tension, and so felt we should tell you about it.

And, you should use a firm, even, double beat, always beating with the shed open, changing to the next shed, and beating again before you throw the next shot of weft.

Also, we found that you should weave with the weft thread in the shed as close to the finished web as possible, as when you let it lie at more of an angle, there was enough slack that it would tend to create a loop in the weft.

Otherwise, except for knots in the silk occasionally, there were no other problems in the weaving.

Most weavers seldom use as many threads per inch as we have, but we felt the results were worth it, so hope that you try it some time.

SOURCE OF THE DESIGN OR PATTERN

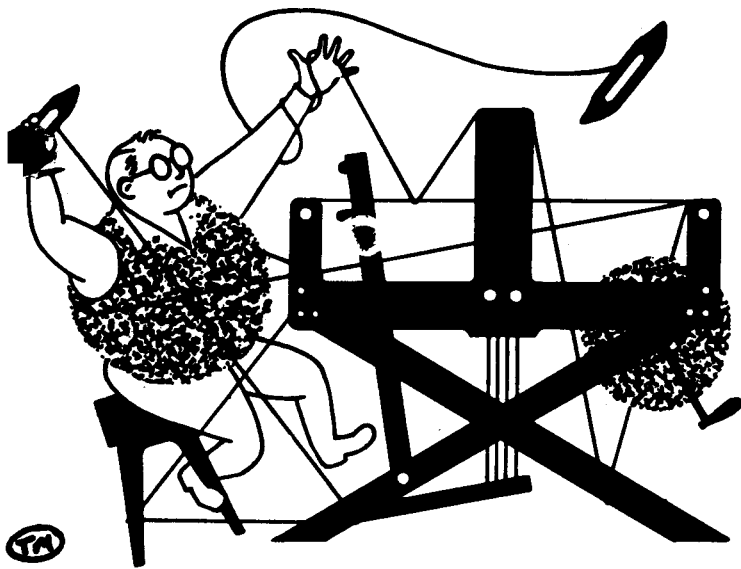
We have a book which has been out of print for many years (10 or more) which is entitled "A GERMAN HANDWEAVERS PATTERN BOOK." This is one of the samples from his book. We also wove a sample of this same weave at 12 threads per inch, as well as using this fine silk, and it is very handsome in the very coarse threads also.

MORE ABOUT THE SPUN SILK WARP AND WEFT

This spun silk is available in 10 colors, and if you would like samples of these colors, we will be glad to send you a sample sheet.

This is a very smooth quality, spun silk, and as it is 4 ply, it is exceptionally strong for warp and weft.

I don't know whether you've ever read it or not, but I've seen it in print that if you have a fine sliver of steel and a fine sliver of silk, that the silk is much stronger than the steel is. I know that when you wind it on your electric bobbin winder, on a bobbin, it builds up static electricity, and when you touch the bobbin, it will shock you. So, to eliminate this, when winding the bobbins, I keep a reed hook besides the bobbin winder, and when I finish winding it, and before I touch the bobbin, I pick up the reed hook by the wooden handle, and touch the metal part of the hook to the silk. This grounds the electricity, and then you do not get the shock from the back emf.



drafts and designs

a guide for 5 to 12 harness weaves

VOLUME 18, Number 6 February, 1976

OLE !! A MEXICAN FIESTA :

This most unusual interlacement of threads and colors reminds us of a fiesta and fire-crackers and dances, and exuberance. It is a 10 harness weave, with many possibilities.

WARP THREADS USED:

Our warp thread is the imported RAMIE, which we import from Switzerland. It is both wash-fast, and sun-fast, so would be ideal for drapes, curtains, pillows, and many, many, other uses. We used two colors in the warp. The grey is color # 52, and is called Fog Grey. The other color is one of our latest new colors we had dyed to order, and it is color # 73, Rio Rose.

WEFT THREADS USED:

The same two colors that were used in the warp were also used in the weft, Fog Grey and Rio Rose.



THREADING DRAFT:

10								0	0	
9								0	0	
8						X	X		X	X
7						X	X		X	X
6					X	X	X	X		
5					X	X	X	X		
4			0	0						
3			0	0						
2	X	X			X	X				
1	X	X			X	X				

TIE-UP DRAFT:

10	0			
9		0		
8			0	
7				0
6	0		0	
5		0		
4	0		0	0
3		0	0	0
2	0	0	0	
1	0	0		0

KEY TO COLORS IN THE WARP: X---Fog Grey 0---Rio Rose

1 2 3 4

DRAFTS AND DESIGNS:

Published monthly (except July and August, by Robin & Russ Handweavers, 533 North Adams Street, McMinnville, Oregon 97128.

SUBSCRIPTIONS: \$6.00 per year, Back issues or single copies 65¢ each, plus 10¢ postage. Yearly subscriptions start with the September issue. If you subscribe after September, back issues from then on will be mailed to you, unless you specify that you want your subscription to start with the next September issue.

VOLUME 18, Number 5 January, 1976

REED USED:

A 12 dent reed was used, and it was double sleyed, 2 ends per dent, or 24 threads per inch.

SOURCE OF IDEA FOR THIS SAMPLE

This is one of the weaves featured in Else Regensteiner's book, "THE ART OF WEAVING," and we were intrigued with it. Phil Wilson, one of the two men who does some weaving for us, first wove a sample in black and white 2/18's worsted, which was quite striking, but I felt we should have something besides black and white, so we experimented with our ramie, and this is the result.

MORE ABOUT THE THREADS USED:

Our 16/2 Ramie has been a standard item with us for about 15 to 20 years, but we have gradually added new colors from the original 15 until we now have 24 colors. We hope to add another 3 colors later this year, so if you have any suggestions for new colors, do let us hear from you.

The colors are sold to us as both sun-fast and wash-fast, and this fiber is in the "bast" family of fibers, the same as is linen. It has all of the same physical and chemical characteristics as linen, only usually it surpasses the linen in all characteristics but one. It is stronger than linen, stronger when wet than dry, is very absorbent, resists rot and mildew, won't stretch and won't shrink after the original washing.

At present, it is \$8.00 per lb., and has 2400 yards per pound. It comes to us on 2-1/2 to 3 lb. cones, but we wind it off onto 4 oz. tubes of 600 yards each. These sell for \$2.00 each.

COST OF THE FABRIC:

In the warp, we used 3 lbs. of the color # 52, Fog Grey and 1 lb. 2 oz. of the # 73, Rio Rose. So, in a 12 yard warp, 40" wide, we used 4 lbs. 2 oz. of warp at \$8.00 per lb. This makes the warp cost \$33.00, or the cost per yard was \$2.75 per yard.

From our 12 yard warp, we have 10-1/2 yards of finished fabric. As weft, we used 1 lb. 9 oz. Fog Grey, and 1 lb. 8 oz. of Rio Rose. Total weft used was 3 lbs. 1 oz. or the total weft cost was \$24.50. Thus the weft cost per yard was \$2.33 per yard.

WARP COST PER YARD----- \$ 2.75

WEFT COST PER YARD----- 2.33

FABRIC COST PER YARD----- \$ 5.08

MORE ABOUT THE FABRIC:

We were pleasantly surprised when we found practically no problems with this sample. The only thing we did find was that if you left your weft thread too slack in the weaving, that it sometimes tends to make a loop in the fabric in the weft. You can eliminate this very quickly, as you become conscious of it as you weave.

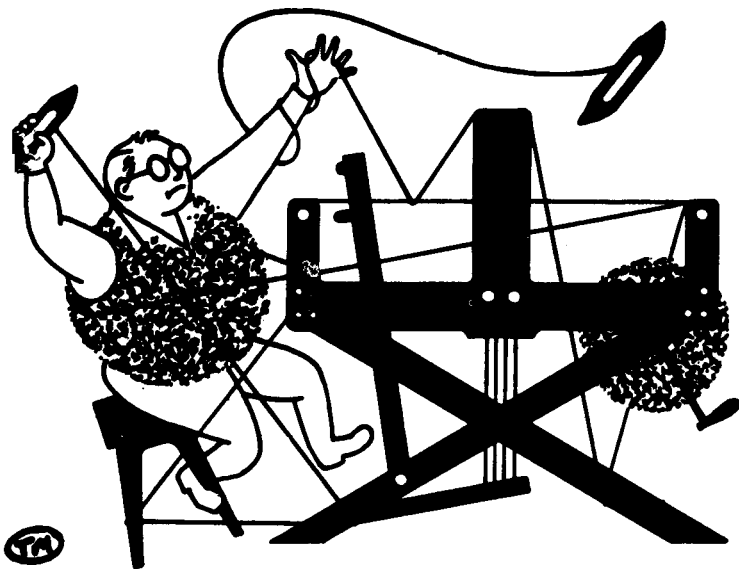
And, once again, even though I sound repetitious, we found that we like the double beat, where you throw the shuttle and before you close the shed, beat. Then open to the next shed and beat again before you throw the shuttle again.

NOTE ABOUT SUBSCRIPTION INCREASE IN PRICE

Because of the increase in cost in Postage, in envelopes, in threads, and printing, we will officially change the price of Drafts and Designs at the end of the current subscription year from \$6.00 to \$8.00 per year. This will take effect after the June, 1976 issue is mailed out or with the first issue of the new volume, which will be in September, 1976.

REPORT ON THE SHADOW WEAVE BOOK

The book, 1000 PATTERNS IN 4, 6, and 8 harness shadow weaves is in progress. It is about 1/3 printed now, and will be finished in about two weeks, and then a week at the binders, and it will be ready for distribution. Actually, there are 1250 pattern variations and photographs of all of these are included. It will have about 270 pages. The persons who ordered before publication will get these at the pre-publication price, but we may have to raise it slightly after we get the final bills from the printer. The pre-publication price was \$6.50



drafts and designs

a guide for 5 to 12 harness weaves

VOLUME 18, Number 7 March, 1976

A CONSTELLATION OF STARS

This beautiful sample is a 10 harness weave that is woven on a point twill threading. You can do something similar to this in an 8 harness, but it is not quite as distinctive as this sample.

THREADING DRAFT:

10									X
9	X								X
8		X						X	
7			X					X	
6				X				X	
5					X			X	
4				X				X	
3					X			X	
2						X	X		
1							X		

TIE-UP DRAFT:

10				0	0	0	0	0		
9			0	0	0		0			0
8		0	0	0		0		0		
7	0	0	0		0	0				0
6				0	0	0		0		
5				0	0					0
4				0				0		
3										0
2								0		
1										0
	1	2	3	4	5	6	7	8	9	
								A	B	

WARP:

Our warp was a 20/2 egyptian cotton, mercerized and gassed in a color called Yale Blue.



WEFT:

There are two threads in the weft. One was the tabby thread which was also the same as the warp. Yale Blue egyptian cotton.

The second thread used in the weft was our 12/2 worsted in our color called Porcelain Blue. This was the pattern thread.

REED USED:

We used a 15 dent reed, and double-sleyed it, 2 ends per dent or 30 per inch.

DRAFTS AND DESIGNS:

Published monthly (except July and August, by Robin & Russ Handweavers, 533 North Adams Street, McMinnville, Oregon 97128. SUBSCRIPTIONS: \$6.00 per year, Back issues or single copies 65¢ each, plus 10¢ postage. Yearly subscriptions start with the September issue. If you subscribe after September, back issues from then on will be mailed to you, unless you specify that you want your subscription to start with the next September issue.

VOLUME 18, Number 7 March, 1976

WIDTH AND LENGTH OF WARP:

Our warp as usual, was 40" wide, and was 12 yards long. From this, we received 10-2/3 yards of finished fabric.

TREADLING SEQUENCE:

There are 29 shots in one complete pattern repeat. Also, please note, that treadles # 8 and # 9 are the tabby treadles.

1. Treadle # 9, 20/2 Yale Blue
2. Treadle # 1, 12/2 Porcelain Blue
3. Treadle # 8, 20/2 Yale Blue
4. Treadle # 2, 12/2 Porcelain Blue
5. Treadle # 9, 20/2 Yale Blue
6. Treadle # 3, 12/2 Porcelain Blue
7. Treadle # 8, 20/2 Yale Blue
8. Treadle # 4, 12/2 Porcelain Blue
9. Treadle # 9, 20/2 Yale Blue
10. Treadle # 5, 12/2 Porcelain Blue
11. Treadle # 8, 20/2 Yale Blue
12. Treadle # 6, 12/2 Porcelain Blue
13. Treadle # 9, 20/2 Yale Blue
14. Treadle # 7, 12/2 Porcelain Blue
15. Treadle # 8, 20/2 Yale Blue
16. Treadle # 6, 12/2 Porcelain Blue
17. Treadle # 9, 20/2 Yale Blue
18. Treadle # 5, 12/2 Porcelain Blue
19. Treadle # 8, 20/2 Yale Blue
20. Treadle # 4, 12/2 Porcelain Blue
21. Treadle # 9, 20/2 Yale Blue
22. Treadle # 3, 12/2 Porcelain Blue
23. Treadle # 8, 20/2 Yale Blue
24. Treadle # 2, 12/2 Porcelain Blue
25. Treadle # 9, 20/2 Yale Blue
26. Treadle # 1, 12/2 Porcelain Blue
27. Treadle # 8, 20/2 Yale Blue
28. Treadle # 9, 20/2 Yale Blue
29. Treadle # 8, 20/2 Yale Blue

End of one pattern repeat. Repeat over and over as desired.

MORE ABOUT THE THREADS USED:

The 20/2 egyptian cotton as used in the warp and tabby thread is available in about 90 plus colors. It is mercerized and gassed and is a cotton from the Sak valley in Egypt. It comes on 1/2 lb. cones, and the price is \$8.50 per lb., or \$4.25 per 1/2 lb. cone. I might also mention that gassing the thread is passing the thread through a gass flame to both sear and burn off any nubs, etc. This adds more strength to the thread, as well as making it a smoother and finer quality thread.

Also, the 12/2 worsted is a top quality yarn, which we have spun and dyed to order in England. We have 22 colors in stock and it is \$9.60 per lb., and comes on about 1/2 lb. cones. It has 3360 yards per pound.

COST OF THE FABRIC:

In the warp, we used 1 lb. 12 ounces of the 20/2 Yale Blue Egyptian Cotton. Thus the total warp cost for 12 yards of 40" wide warp, or the cost per yard was \$1.24 per yard.

In the weft of 10 and 2/3 yards of finished fabric, we used 1 lb. 4 oz. of 20/2 egyptian cotton, and 2 lbs. 5 oz. of 12/2 Porcelain Blue Worsted. The total weft cost was \$32.83 or the cost per yard was \$3.08.

WARP COST PER YARD-----	\$ 1.24
WEFT COST PER YARD-----	3.08
<u>FABRIC COST PER YARD-----</u>	<u>\$ 4.32</u>

MORE ABOUT THIS FABRIC:

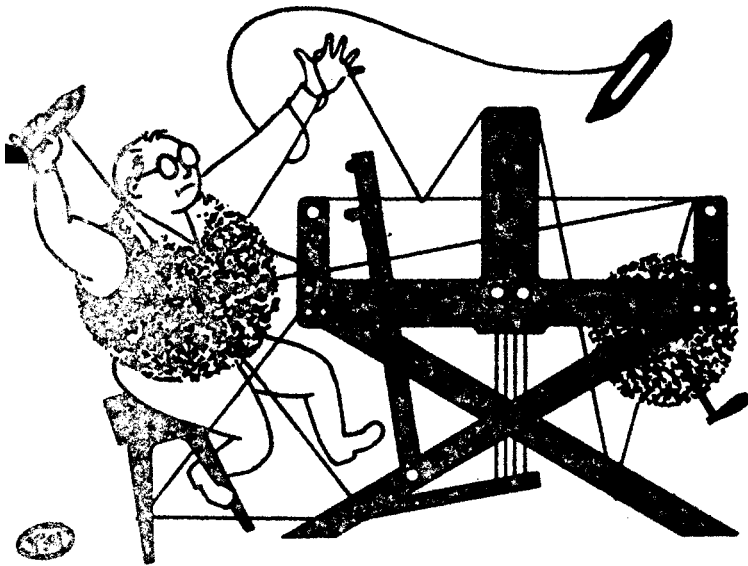
One thing that we should mention is that the proper pattern side will weave on the underside with this tie-up.

You could change the tie-up, so that the pattern would appear on the top when you are weaving, but it would be much more lifting of harnesses, and much more tiring to weave.

If you did decide to change the tie-up, it would be just the opposite of what we have tied up here.

There are really no problems in the weaving of this fabric. No problems in either the warp or the weft.

Hope you'll enjoy weaving this fabric.



drafts and designs

a guide for 5 to 12 harness weaves

VOLUME 18, Number 8 April, 1976

POCKET MAGIC:

This most interesting 8 harness weave is one that was fun to do, and it is actually a double weave that forms pockets on the surface of your fabric.

WARP THREADS USED:

There are two threads used in the warp. One is a 20/2 Egyptian Cotton, in a color called Indian Orange. It is the primary warp thread. For the float thread, we used a heavy, Natural, Three Ply, Spun Silk thread. It is actually a 24 ply, as we find that each of the three plies is composed of 8 ends twisted together and then 3 of these are twisted to make the heavier thread.

WEFT THREADS USED:

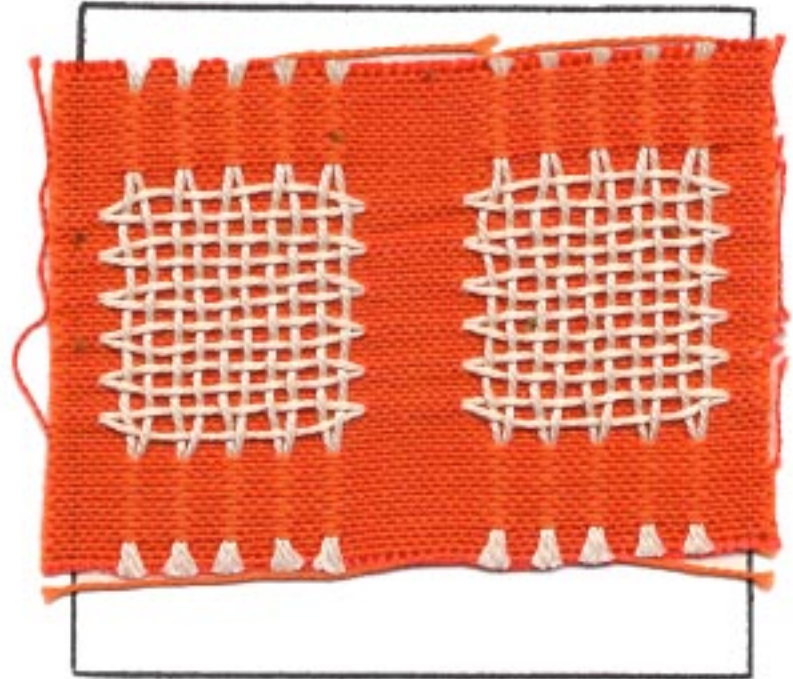
There are also two threads used in the weft, and one is the same heavy, Three Ply Spun Silk as the float or pocket thread. The other main weft thread is a size 10/2 C.P. Cotton in a color which is called Toboggan.

THREADING DRAFT:

8				X	X	X	X	X	X	X	X	
7				X	X	X	X	X	X	X	X	
6	0		0			0		0			0	
5	0		0			0		0			0	
4	X	X	X	X	X	X	X	X	X			X
3	X	X	X	X	X	X	X	X	X			X
2	X	X	X	X	X	X	X	X	X			X
1	X	X	X	X	X	X	X	X	X			X

KEY TO THREADS IN THE THREADING DRAFT:

X--20/2 Egyptian Cotton, Indian Orange
O--Three Ply Natural Spun Silk



TIE-UP DRAFT:

8	0	0	0	0	
7	0	0	0	0	
6	0		C	C	
5	0		0	0	
4			0	0	
3			0	C	
2			C	0	
1			0	0	
	1	2	3	4	5

DRAFTS AND DESIGNS:

Published monthly (except July and August, by Robin & Russ Handweavers, 533 North Adams Street, McMinnville, Oregon 97128.

SUBSCRIPTIONS: \$6.00 per year, Back issues or single copies 65¢ each, plus 10¢ postage. Yearly subscriptions start with the September issue. If you subscribe after September, back issues from then on will be mailed to you, unless you specify that you want your subscription to start with the next September issue.

VOLUME 18, Number 8 April, 1976

REED USED:

A 15 dent reed was used, and it was double-sleyed, 2 ends per dent or 30 threads per inch. This was true of both the fine 20/2 cotton and the heavier silk.

MORE ABOUT THE FABRIC:

One thing we should tell you about above all others is that the heavy, 3 ply spun silk does not weave in as much as the 20/2 and 10/2 cotton, but floats and as a result, becomes slack after a while. So, you must compensate for this and keep this silk tighter. So, what you do is take a long lease stick, go behind the harnesses, and pick up all of the silk threads and put the lease stick between the silk and cotton warp. Slide the lease stick over the back beam and down to the warp beam, still separating the silk and cotton. Then, put a weight on each end of the lease stick, and perhaps also in the middle, so the slack in the silk that accumulates as you weave is held taught by the lease stick and the weights. This is the main problem in weaving this fabric, and it really is not a problem if you do as directed.

One more thing about this fabric. We threaded the loom from right to left, and on the last repeat of the pattern, you end up with 1,2,3,4 in Egyptian Cotton. You should add say 8 selvage threads on the left side only, and thread it 5,6,7,8,5,6,7,8. This way, you get that last float block of threads to weave, without the weft distorting that floating block. You will see what I'm writing about when you try the actual weaving.

Use a firm, even, double beat.

Experiment with the warp tension until you are pleased with the way the fabric is weaving. I think that a medium tension will suffice, but some persons may find they like a tighter tension better, and others a looser tension. It is up to the weaver.

COST OF THE FABRIC:

We had a 12 yard warp, 40" wide, and in it, we used 1 lb. 8 oz. of the heavy 3 ply spun silk, and 1 lb. 9 oz. of the Indian Orange Egyptian Cotton. Our total warp cost was \$27.68 or the cost per yard came to \$2.31 per yard.

We wove 9 yards and 5" of material, and ran out of the 10/2 cotton, with about a yard of warp left. In this 9 yards, 5" of material we used 1 lb. 8 oz. of the 3 ply spun silk, and 2 lbs. 8 oz. of 10/2 C.P. cotton in Toboggan color. So, our total weft cost for this was \$34.40 or the cost per yard was \$3.83 per yard.

WARP COST PER YARD, 40" wide	\$ 2.31
WEFT COST PER YARD-----	3.83
FABRIC COST PER YARD-----	\$ 6.14

TREADLING SEQUENCE:

There are 88 shots in one complete pattern repeat, so I will divide the treadling into 5 groups for ease in your understanding the treadling, and for ease in writing it.

1. Treadle # 3 once and # 4 once and repeat until you have 12 shots.
2. Treadle # 5 once and # 6 once and repeat until you have 8 shots.
3. Treadle # 3 once and # 4 once, and repeat until you have 12 shots
4. Treadle # 5 once and # 6 once and repeat until you have 8 shots.

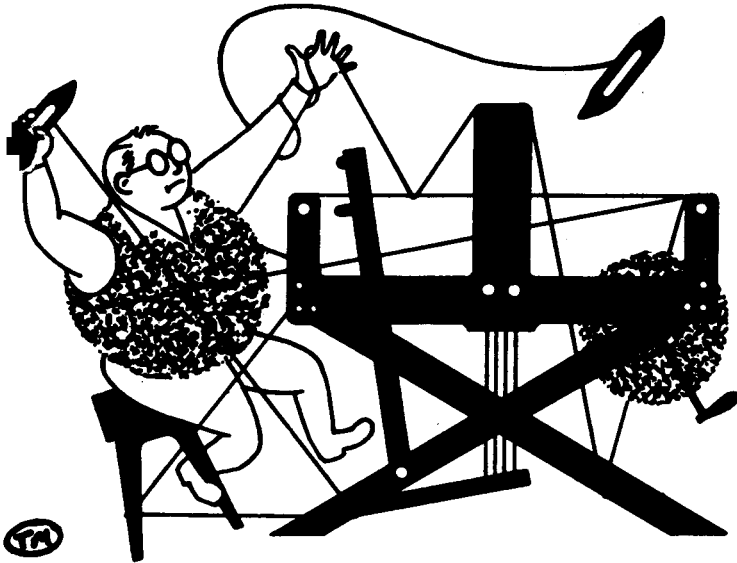
NOTE: This is 40 shots in all, and all is done with 10/2 Toboggan Cotton.

5. This unit you will repeat 6 times and as it has 8 shots per unit, you will have 48 shots. Treadle # 1 and then # 2 with the 3 ply natural spun silk. Then treadle 5,6,5,6,5,6 with 10/2 Toboggan Cotton. Note that in this 5th unit, you have 2 shots of spun silk, and 6 shots of 10/2 cotton. And you repeat these 8 threads a total of 6 times, until you have 48 threads in unit 5. Then you start over with # 1 unit and go through the whole sequence again.

MORE ABOUT THREADS USED & COST OF SAME.

In the warp, our main thread was a high quality, size 20/2 Egyptian Cotton in the color called Indian Orange. It comes on 1/2 lb. cones, has 8400 yards per pound, and is priced at \$8.50 lb. We do have about 90 colors available in this outstanding thread.

Also, in the warp and weft, we used a 3 ply heavy spun silk in natural with a yardage of 1600 yards per lb. It is \$9.60 per lb., comes on about 1 lb. 4 oz. cones, and we have just a limited amount.



drafts and designs

a guide for 5 to 12 harness weaves

VOLUME 18, Number 9 May, 1976

A MONOCHROMATIC SUMMER AND WINTER

This is classed as a 6 harness Summer and Winter weave. You can actually use the 7th harness to make a better selvage, but it is not absolutely necessary in this weave.

WARP:

Our warp thread was the size 20/2 mercerized and gassed egyptian cotton in a Golden Brown color.

WEFT:

There are two threads used in the weft. The pattern thread is the size 16/2 Ramie in the color # 54, Rust Brown.

And the tabby thread was the same 20/2 mercerized and gassed egyptian cotton in the Golden Brown Color.

REED USED:

A 15 Dent reed was used, and it was double sleyed, 2 ends per dent, or 30 threads per inch.



THREADING DRAFT:

7	X	X																X	X
6			X	X										X	X				
5					X	X							X	X					
4							X	X					X	X					
3									X	X	X	X							X
2		X		X	X	X	X	X	X	X	X	X	X	X	X	X	X		
1	X		X		X		X		X		X		X		X		X		X
	Left Selvage																	Right Selvage	

DRAFTS AND DESIGNS:

Published monthly (except July and August, by Robin & Russ Handweavers, 533 North Adams Street, McMinnville, Oregon 97128. SUBSCRIPTIONS: \$6.00 per year, Back issues or single copies 65¢ each, plus 10¢ postage. Yearly subscriptions start with the September issue. If you subscribe after September, back issues from then on will be mailed to you, unless you specify that you want your subscription to start with the next September issue.

VOLUME 18, Number 9 May, 1976

TIE-UP DRAFT:

7						X	
6	X						X
5		X					X
4			X				X
3				X			X
2						X	X
1					X		X

1 2 3 4 X Y A B

NOTE ABOUT THREADING DRAFT:

While this draft is given as a seven harness weave, all the 7th harness does is weave a border at the right and left selvages. If you do not have 7 harnesses, it can be woven on 6 harnesses without the selvage border.

COST OF THE THREADS USED:

The 20/2 Egyptian Cotton comes on 1/2 lb. cones of 4200 yards each, and it is \$8.50 per lb. or \$4.25 per 1/2 lb. tube.

The 16/2 Rust Brown Ramie comes on 600 yard tubes of 4 oz. each. It has 2400 yards per lb., and is \$8.00 per pound.

COST OF THE FABRIC:

We had a 13 yard warp, 40" wide, and 30 threads per inch. It took 1 lb. 15 oz. of 20/2 Egyptian Cotton, Golden Brown, and so the total warp cost was \$16.47, or the cost per yard was \$1.27 per yard.

In the weft, we used 3 lbs. 2 oz. of the 16/2 ramie, and 1 lb. 1 oz. of the 20/2 Egyptian cotton in Golden Brown. So, our total weft cost \$33.97 for both tabby and pattern thread or \$2.87 per yard.

WARP COST PER YARD, 40" Wide --- \$ 1.27
WEFT COST PER YARD----- 2.87

Fabric Cost per Yard----- \$ 4.14

MORE ABOUT THE FABRIC:

There were no problems, and no broken threads in the weaving of this sample. Use a firm, even, double beat in the weaving. Happy weaving.

TREADLING SEQUENCE:

There are 32 shots in each pattern repeat and 16 are of Ramie and 16 are of cotton. Also, please note that in this tie-up, you step on 2 treadles for every pattern shot with the Rust Brown Ramie, and you step on one treadle each time for the tabby or binder thread.

- 1.. Treadles 1 & X ---16/2 Rust Ramie
- 2.. Treadle # A ---20/2 Golden Brown
- 3.. Treadle 1 & Y ---16/2 Rust Ramie
- 4.. Treadle # B ---20/2 Golden Brown
- 5.. Treadles 1 & X ---16/2 Rust Ramie
- 6.. Treadle # A ---20/2 Golden Brown
- 7.. Treadles 1 & Y ---16/2 Rust Ramie
- 8.. Treadle # B ---20/2 Golden Brown
- 9.. Treadles 2 & X ---16/2 Rust Ramie
- 10.. Treadle # A ---20/2 Golden Brown
- 11.. Treadles 2 & Y ---16/2 Rust Ramie
- 12.. Treadle # B ---20/2 Golden Brown
- 13.. Treadle # 3 & X ---16/2 Rust Ramie
- 14.. Treadle # A ---20/2 Golden Brown
- 15.. Treadle # 3 & Y ---16/2 Rust Ramie
- 16.. Treadle # B ---20/2 Golden Brown
- 17.. Treadle # 4 & X ---16/2 Rust Ramie
- 18.. Treadle # A ---20/2 Golden Brown
- 19.. Treadle # 4 & Y ---16/2 Rust Ramie
- 20.. Treadle # B ---20/2 Golden Brown
- 21.. Treadle # 4 & X ---16/2 Rust Ramie
- 22.. Treadle # A ---20/2 Golden Brown
- 23.. Treadle # 4 & Y ---16/2 Rust Ramie
- 24.. Treadle # B ---20/2 Golden Brown
- 25.. Treadle # 3 & X ---16/2 Rust Ramie
- 26.. Treadle # A --- 20/2 Golden Brown
- 27.. Treadle # 3 & Y ---16/2 Rust Ramie
- 28.. Treadle # B ---20/2 Golden Brown
- 29.. Treadle # 2 & X ---16/2 Rust Ramie
- 30.. Treadle # A ---20/2 Golden Brown
- 31.. Treadle # 2 & Y ---16/2 Rust Ramie
- 32.. Treadle # B ---20/2 Golden Brown

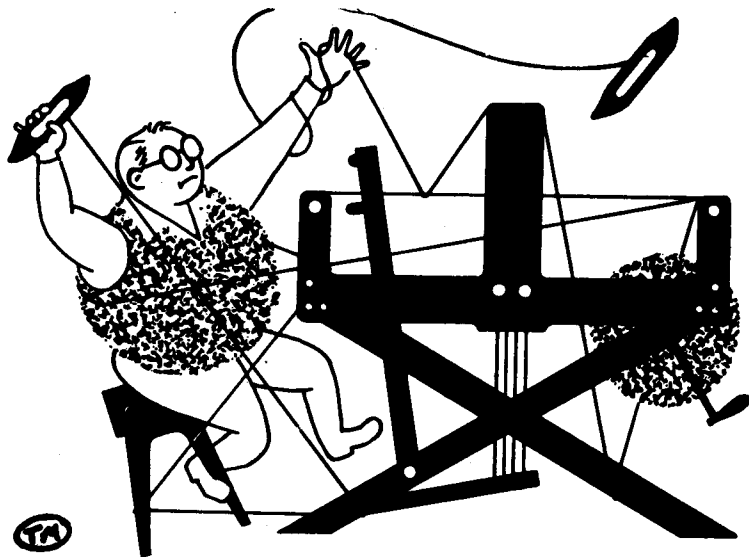
End of one complete pattern repeat. Repeat over & over as desired.

Also, note that on your last pattern repeat when you want to balance patterns, you have to end with 25 to 32 to balance the pattern.

OOPS: MISSING TREADLING FOR THE FEBRUARY 1976 Drafts and Designs Issue. Here it is, and yes, we just plain forgot it.

1. Treadle # 1, Fog Grey Ramie
2. Treadle # 2, Fog Grey Ramie
3. Treadle # 1, Fog Grey Ramie
4. Treadle # 2, Fog Grey Ramie
5. Treadle # 3, Rio Rose Ramie
6. Treadle # 4, Rio Rose Ramie
7. Treadle # 3, Rio Rose Ramie
8. Treadle # 4, Rio Rose Ramie

End of one complete pattern repeat. Repeat over and over as desired.



drafts and designs

a guide for 5 to 12 harness weaves

VOLUME 18, Number 10 June, 1976

MEADOW MAZE:

This intricate pattern looks like a very complex pattern that would take many harnesses, but actually, it is an 8 harness shadow weave.

WARP:

Our warp thread is a 2/12's worsted yarn, and we used two colors. The colors are:

X---the light color---color # 13,
Chantilly Green

O---the dark color----color # 33,
Ranger Green

WEFT:

The same 2 colors in the 2/12's worsted used in the warp, are also used in the weft.

REED USED:

A 12 dent reed was used, and it was double-sleyed, 2 ends per dent, or 24 threads per inch.



THREADING DRAFT:

8		0		0		0				X X X
7		X X		X X		X X				0 0
6		0 0		0 0		0 0			X X X	X X X
5		X	X	X	X	X	X		0 0 0	0 0 0
4		0	0	0	0	0	0		X X X	X X X
3		X		X X	X	X	X		0 0 0	0 0 0
2		0		0 0		0 0		0 X X X		X X X
1		X		X		X		X 0 0 0		0 0 0

KEY TO COLORS IN THE WARP:

X--light--color # 13, Chantilly Green

O--dark--color # 33, Ranger Green

DRAFTS AND DESIGNS

Published monthly (except July and August) by Robin & Russ Handweavers, 533 N. Adams St., McMinnville, Oregon.

SUBSCRIPTIONS: \$6.00 per year. Back issues or single copies, 65¢ each. Yearly subscriptions start with the September issue. If you subscribe after September, back issues from then on will be mailed to you, unless you specify that you want your subscription to start with the next September issue.

VOLUME 18, Number 10 June, 1976

SOURCE OF IDEA FOR THIS SAMPLE:

This is one of the patterns from our new publication, "1000 plus PATTERNS IN 4, 6, and 8 HARNESSSES." This is pattern # 30, treading # 1 on that particular pattern in the 8 harness pattern section. Actually, in this book, there are 1246 patterns given, about 650 of them in the 4 harness patterns, about 300 in 6 harness patterns, and about 300 in the 8 harness patterns. It is \$7.95 plus postage.

TREADING SEQUENCE:

The treading sequence for each pattern repeat is 84 threads, exactly the same as the number of threads in the warp. And, you use the same colors as in the warp. The X represents the light colored thread and the 0 represents the darker colored thread. Rather than taking 84 spaces to write it out, I will write it out in the shorter form, by numbers, giving the number of the treadle you should use. And, when I underline a number, that means it is a light colored thread, and with no underlining, it is a dark colored thread.

1. 2, 1, 2, 1, 2, 1.
2. 4, 3, 4, 3, 4, 3.
3. 6, 5, 6, 5, 6, 5.
4. 8, 7, 8, 7, 8.
5. 5, 6, 5, 6, 5, 6.
6. 3, 4, 3, 4, 3, 4.
7. 1, 2, 1, 2, 1, 2.

This is the end of the first half
This is the end of the first half of the pattern. Then, you proceed on to the 2nd half, which is an 8 harness point twill treading, repeated 3 times.

8. 1,2,3,4,5,6,7,8,7,6,5,4,3,2,
9. 1,2,3,4,5,6,7,8,7,6,5,4,3,2,
10. 1,2,3,4,5,6,7,8,7,6,5,4,3,2,1.

End of one complete pattern repeat. Do repeat over and over.. Remember, the underlined thread is light, and with no underlining, it is dark.

TIE-UP DRAFT:

8		0		0		0		0
7	0		0		0		0	
6		0		0		0	0	
5	0		0		0			0
4		0		0	0			0
3	0		0			0		0
2		0	0		0		0	
1	0			0		0		0
	1	2	3	4	5	6	7	8

COST OF THE THREADS USED:

The 2/12's worsted comes in 22 colors and is \$9.60 per lb. It has 3360 yards per pound, comes on approximately 1/2 lb. cones. It is spun and dyed to order for us in England.

COST OF THE FABRIC:

In our 14 yard warp, 42" wide, we used 4 lbs. 4 oz. of the 2/12's worsted. At \$9.60 per pound, our total warp cost was \$40.80 or the cost per yard was \$2.90 per yard.

It took the same amount of weft as used in the warp, less a little for loom waste, so the weft cost per yard was \$2.70 per yard.

WARP COST PER YARD----- \$ 2.90
WEFT COST PER YARD----- 2.70

FABRIC COST PER YARD----- \$ 5.60

MORE ABOUT THE FABRIC:

We did this on our loom and warped it by doing sectional warping. And you see in the pattern, that the color sequence changes twice, so it might be a problem if you put warp on every section. So, we warped it with a complete pattern repeat, squeezed into each 2 inch section, and we warped only 12 sections of our warp beam, with a complete pattern repeat in each section. This came out to 42" wide on the loom. Normally, you would warp 21 of the 2" sections for a 42" wide warp. But we warped a 2" section, then skipped a 2" section, warped the 3rd, and spread out the 12 sections we warped, so it was 42" wide on the warp beam. We have had no problems, even though we squeezed 84 threads into each of the 12 sections that we warped.

Also, it is important that you use the proper dark or light thread at the right time. If you change one thread and get it in the wrong place in the weft, the pattern will look entirely different.