

DRAFFT'S AND DESIGNS

A guide for 5 to 12
harness weaves

Volume 2, No. 1 September 1959

THREADING DRAFT:

6				A	A	A	A	A	A	A	A	A	A	A	
5				B	C	B	C	B	C	B	C	B	C		
4			A			A									
3			D			D									
2		A				A									
1		D				D									

WOODLAND GLEN

An all wool fabric that can be used for suiting materials, tailored skirts, sport coats, etc. This 6 harness spot weave has many other possibilities in other kinds of materials.

TIE-UP DRAFT

6	X		X		X	
5		X		X		X
4	X		X	X	X	
3			X			X
2	X	X	X		X	
1	X					X
	1	2	3	4	5	6

WARP USED:

The warp used is a 2/17's worsted yarn with about 4600 yards per lb. It comes on 1/2 lb. spools or cones, and is \$6.80 per lb.

WEFT USED:

The weft used is exactly the same yarn as was used in the warp.

REED USED:

A 12 dent reed was used, and it was double-sleyed, 2 ends per dent, making a total of 24 threads per inch.



KEY TO COLORS USED IN THE WARP AND WEFT

- A. Charcoal Heather 2/17's
- B. Spring Green 2/17's
- C. Jade 2/17's
- D. Oatmeal Heather 2/17's

DRAFTS AND DESIGNS

Published monthly (except July and August) by Robin & Russ Handweavers
632 Santa Barbara Street, Santa
Barbara, California.

SUBSCRIPTION: \$4.00 per year
Back issues—single copies 50¢ each

VOLUME 2, Number 1, September 1959

CORRECTION PLEASE:

We wanted to call your attention to the fact that there was a mistake in the threading draft in the June issue of Drafts and Designs. It was an error on the person typing the stencil, as just one thread was left out of the threading draft. On the June sample of DANCING DIAMONDS, reading on the threading draft from right to left, after the 38th thread, which is on harness #6, you should add one more thread which would be the 39th in the warp, and it would be on harness #3. Please excuse this mistake, and I hope that it didn't cause any trouble for anyone.

TREADLING:

Please note that on the tie-up, the treadles #5 and #6 are the plain weave or tabby treadles.

1. Treadle #6 and #5 for 18 picks of the Charcoal Heather
2. Treadle #4—Charcoal
3. Treadle #3—Spring Green
4. Treadle #2—Charcoal
5. Treadle #1—Spring Green
6. Treadle #4—Charcoal
7. Treadle #3—Spring Green
8. Treadle #2—Charcoal
9. Treadle #1—Spring Green

END OF ONE PATTERN REPEAT. Repeat over and over.

SOURCE OF THE PATTERN

This pattern is one of the many in the Swedish Book which has been translated into English, Malin Selander's WEAVING PATTERNS, which has many color photographs and details of every fabric illustrated. I might mention that Malin Selander has another new weaving text out—and it has or is being translated into English now—and is due in from the printers either this month or next month. If anyone would like to order it, we will be glad to accept advance orders. It is expected that it will be

the same price as the first book, Weaving Patterns, or \$6.95.

MORE ABOUT THE FABRIC:

The 2/17's heathers are a favorite of mine, and thus it was extra pleasing to weave this month's sample. I would like you to notice how nice this worsted is after it has been washed and then steam pressed. We washed it by hand and then steam-pressed it. We wanted to do this also to check the amount of shrinkage when this worsted is washed, and we were amazed at the small amount of shrinkage. We had 10 yards and 24 inches before washing, and we had 10 yards and 16 inches after washing and steam pressing. As for the width, the fabric was 38" before washing, and it was about 37" wide after washing and steam pressing.

There is a slight tendency for this worsted to cling together in the warp, as is true with many worsteds, but this can be handled very easily by beating with the shed open, change to the next treadle, and beating lightly again.

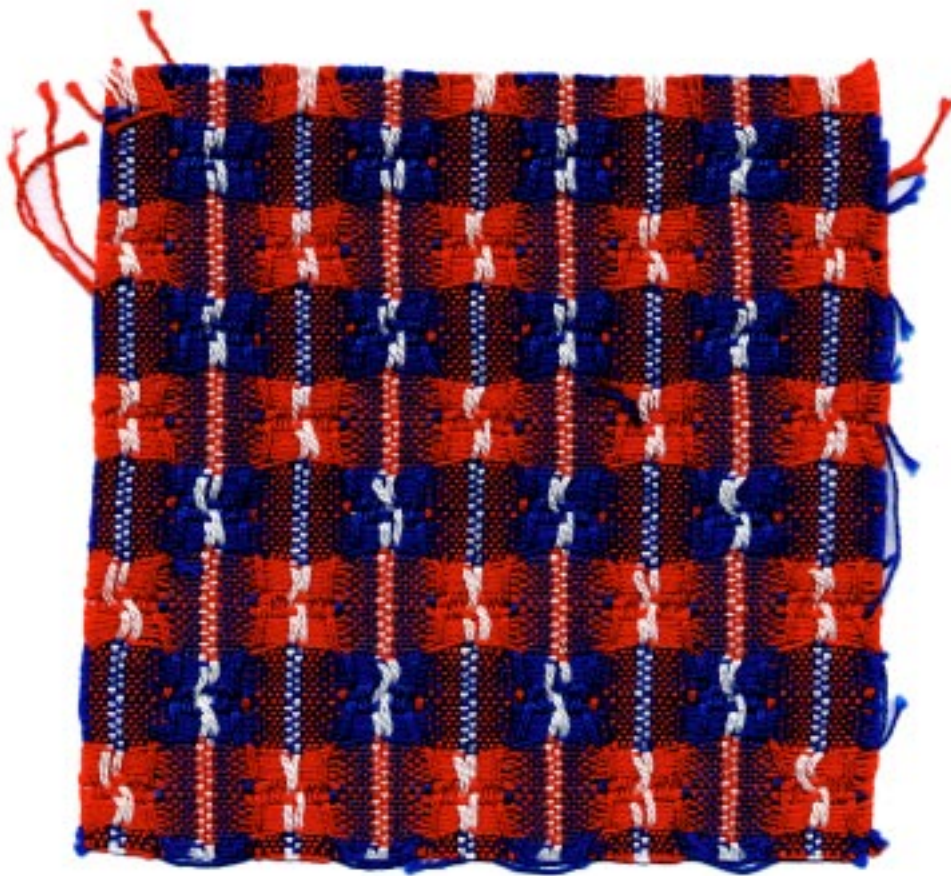
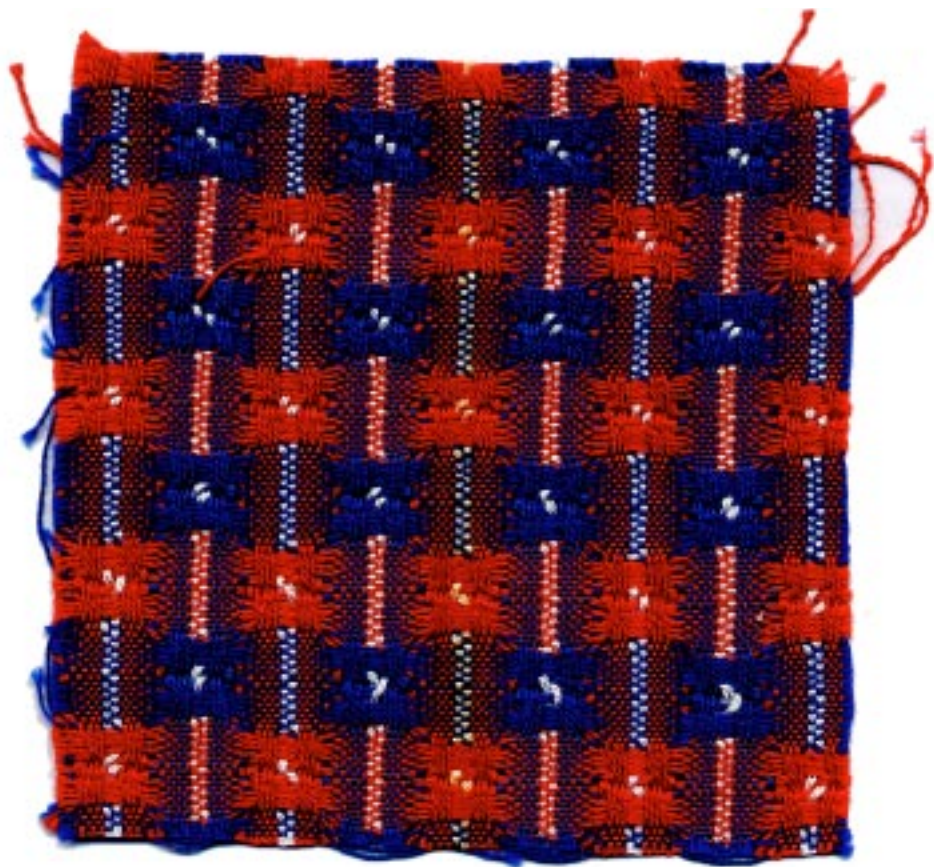
Also, notice that on one side of the fabric the spot is green, and then if you turn over the sample, you will notice that on the other side, the spot is in heather grey. Of course, most of you understand that the spot is caused by the warp threads on harnesses 4,3,2, 1, and the background or plain weave is the warp that is on harnesses 5 and 6.

There are 28 threads per one pattern repeat, and if you want the fabric to balance on your loom, having just plain weave on the outside of each edge of the fabric, on your last repeat on your set-up of the loom, you will just eliminate the 8 threads on harnesses 4,3,2, 1.

We were particularly pleased with the colors in this sample, and thought that the jade in the warp gave so much more life to the fabric than all dark and all light heather. We hope that you like it too but, of course, we all have our own color preferences.

Next month's sample will be an unique 8 harness pattern that we have seen in some of the Finnish Texts and that we have seen also in some of the folk-dance costumes from Czechoslovakia and Poland.

--Russell E. Groff, Editor



DRAFTS AND DESIGNS

Published monthly (except July and August by Robin & Russ Handweavers, 632 Santa Barbara St., Santa Barbara, California.

SUBSCRIPTION:

\$4.00 per year. Back issues or single copies are 50¢ each.

VOLUME 2, Number 2, October 1959

REED USED:

A 10 dent reed was used, and the 20/2 cotton was sleyed 4 ends per dent, this making a total of 40 threads per inch in the warp.

KEY TO COLORS USED IN THE WARP:

X--20/2 Egyptian Cotton, Royal Blue
A--20/2 Egyptian Cotton, White
O--20/2 Egyptian Cotton, Red

TREADLING:

I will give the treadling in a numerical sequence, first for the red, 20/2 Egyptian cotton, and then for the Royal Blue 20/2. Also, please note that I repeated in the treadling #11 twice, and then #10 twice, and #5 twice and #4 twice. On the treadling for the red, where #11 and 10 are repeated twice, we found it more convenient to have one shuttle wound with 2 ends of weft, and use this on #11 and #10, instead of having to use the same shuttle twice on these two treadles. The same applies to the Royal Blue on treadles numbered 5 and 4.

12,9,8,9,8,9,8,9,8,11,11,10,10,9,8,
9,8, 9,8,9,8--all with 20/2 red--

then on to:

7,6,3,2,3,2,3,2,3,2,5,5,4,4,3,2,3,2

3,2,3,2,1--in the blue, and then back to the red again. Where the double thread is on harnesses 10 and 11, and 4 and 5, you can use a 20/2 white cotton doubled for this if desired, but we did not like it as well as when we used the all red or the all blue.

MORE ABOUT THE FABRIC:

The sample that we wove of this, we set up at 48 per inch, and I do believe it would have been better if this sample had been set-up at 48 per inch, or in other words, use a 12 dent reed, 4 ends per dent. This would have made a firmer fabric than our sample is.

When we did have it set-up at 48 per inch, we used an all natural warp, and

an all white weft, and several different treadlings, and this type of pattern would make outstanding draperies, in different combinations. We used the Egyptian cotton for warp, and a slubby silk in the weft in one sample, a smooth silk in still another sample, and we used in other samples the smooth 20/2 bleached Ramie, the fine 40/2 bleached Ramie, and a 30/2 bleached Egyptian cotton as weft in still another sample.

To my way of thinking, all of the white and natural and white combinations were much more striking than our colors as we have used them in this sample, but we were bound and determined to give you the sample for the folk dance aprons that we saw, so we forgot about the naturals and whites.

ONCE AGAIN, WE ARE PUTTING THE WRONG SIDE OF THE FABRIC UP FOR YOU TO SEE, AS WE LIKE IT THE BEST. However, the underside, or right side, does not give as much of a spot effect, as the aprons that we saw, and thus our choice of turning the fabric over.

This fabric has been rinsed only and then pressed, and we will have one or two of these folk dance aprons made of this pattern and on display in the shop. If any of you do get this way, please be sure to stop and look at them.

You will find a variation of this pattern in the Finnish text, KOTIEN JA KOULUJEN KANGASPUIHIN, BY Pyysalo and Merisalo, although we have a slightly different variation than in this text.

--Russell E. Groff--Editor

ADVERTISING:

20/2 bleached white linen, on 1 lb.

ADVERTISING:

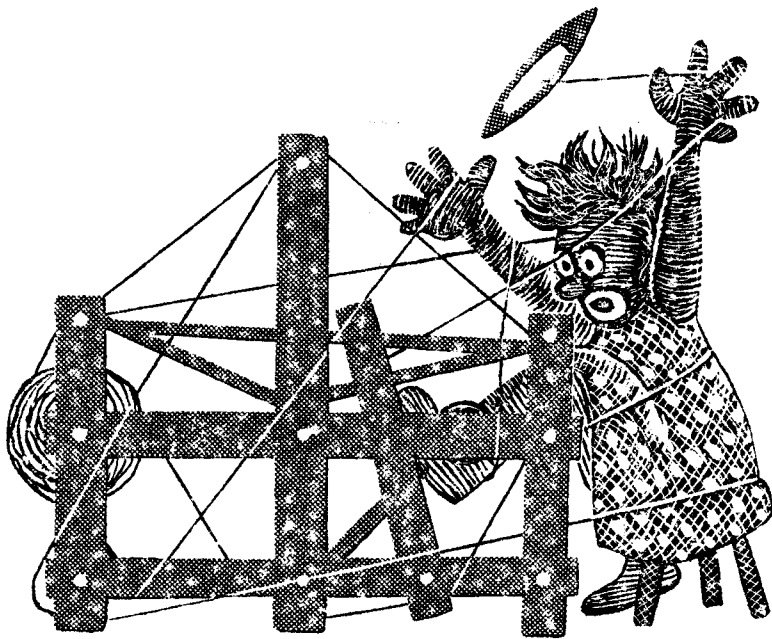
1. 20/2 bleached white linen, on 1 lb. tubes, 3000 yards per lb. \$3.60 lb.

2. SUPPORTED METALLIC, IN GOLD, SILVER AND COPPER. \$3.50 per lb. while it lasts on 3/4 to 1-1/4 cones.

3. Natural Loop Mohair, 2200 yards per lb., 88% mohair, 12% nylon. On cones. \$3.20 per lb.

4. SILK BOUCLE, in silk noil, from Switzerland, on 1/2 lb. cones. About 2000 yards per lb. \$4.50. per lb. while it lasts.

ALL ABOVE ARE ODD LOT SPECIALS, LIMITED TO ABOUT 50 LBS. OF EACH YARN.



DRAFTS AND DESIGNS

A GUIDE FOR 5 TO 12
HARNES WEAVES

Volume 2, No. 3

November 1959

SPRING JADE

A beautiful 8 harness fabric for use in making tailored skirts, tailored suits, or spring coats for women.

THREADING DRAFT:

8							X	
7							OO	
6							OO	
5							X	
4							X	
3							OO	
2							OO	
1	X							

TIE-UP DRAFT:

8		X		X			X	X
7		X		X	X	X		
6	X		X				X	X
5	X		X		X	X		
4			X	X		X		X
3	X	X				X		X
2			X	X	X		X	
1	X	X			X		X	

1. 2. 3. 4. 5. 6. 7. 8.

KEY TO COLORS IN THE WARP:

X--2/17's worsted, S-Blue

OO--2/17's worsted, Spring Green, and it represents 2 threads in just one heddle.

REED USED:

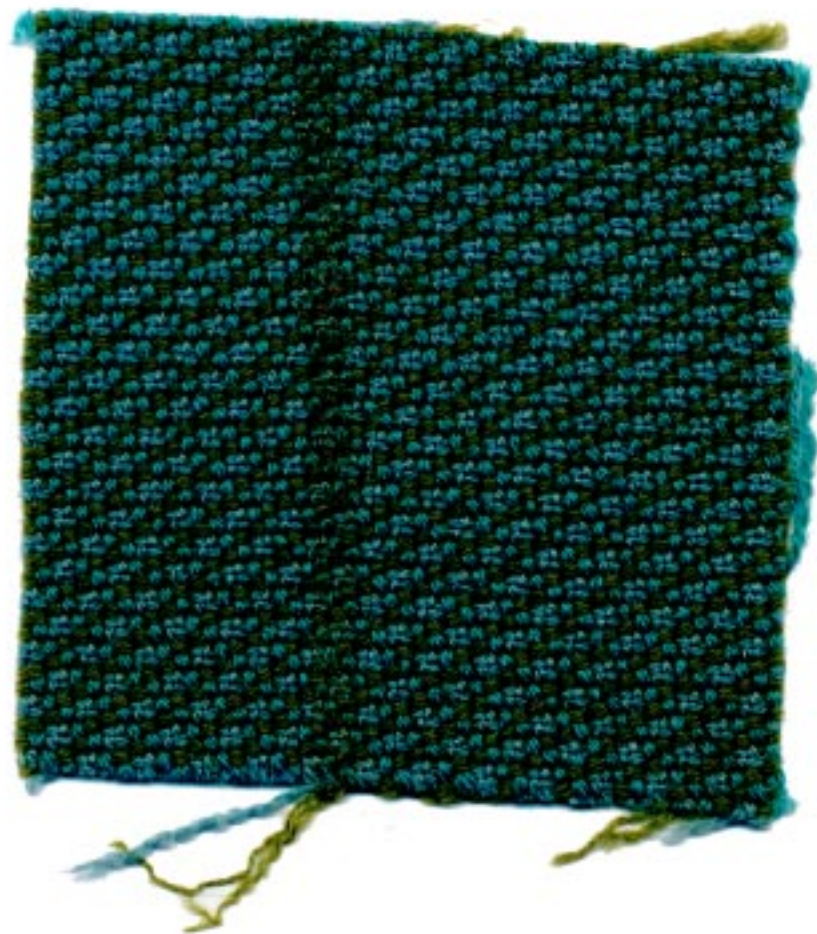
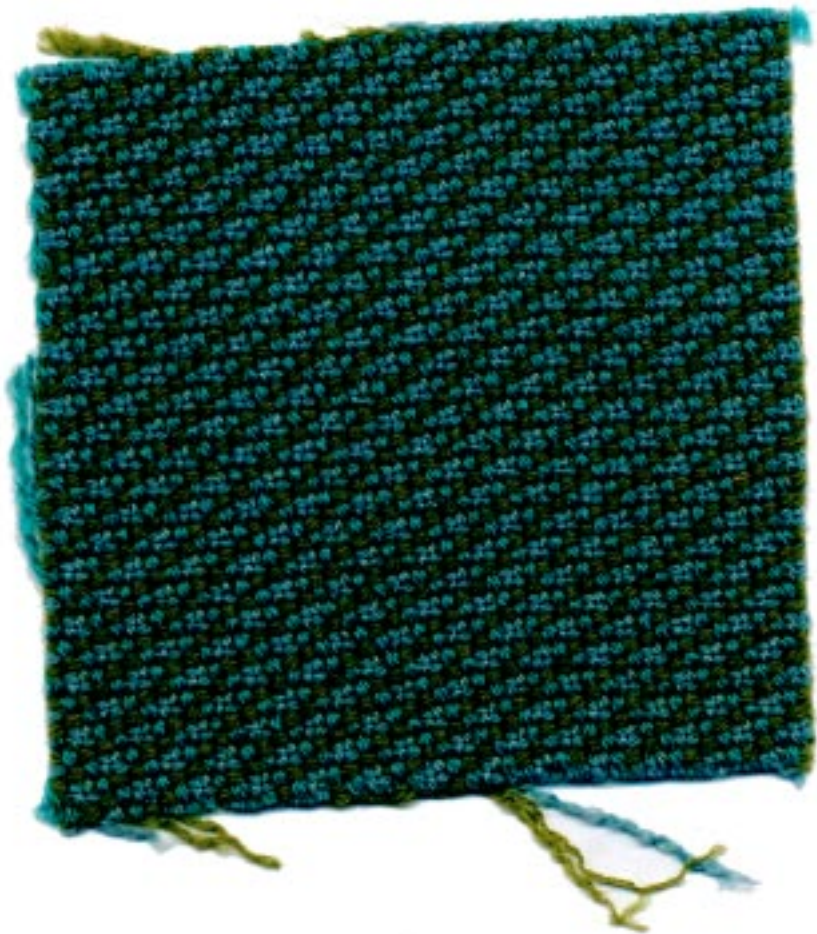
A 12 dent reed was used, and there were three threads per dent, making a total of 36 threads per inch.

TREADLING SEQUENCE:

- #8, 1 time, S-Blue--one thread
- #7, 1 time, Jade-2 threads wound as one
- #6, 1 time, Jade-2 threads wound as one
- #5, 1 time, S-Blue--one thread
- #4, 1 time, S-Blue--one thread
- #3, 1 time, Jade-2 threads wound as one
- #2, 1 time, Jade-2 threads wound as one
- #1, 1 time, S-Blue--one thread

SAMPLE

Sample on next page



DRAFTS AND DESIGNS

Published monthly (except July and August by Robin & Russ Handweavers, 632 Santa Barbara St., Santa Barbara, California.

SUBSCRIPTION:

\$4.00 per year. Back issues or single copies are 50¢ each.

VOLUME 2, Number 3, November 1959

MORE ABOUT THIS FABRIC:

This fabric is a result of a good bit of color experimenting. First of all we set up a sample of S-Blue and Rose Heather and tried the treadling that we gave you in just one color, and the resulting fabric looked to us like a waste of time.

Then we tried a 9" wide warp, and one of the three sections of 3" each was warped with the S-Blue, and a Bright Yellow. The 2nd 3" strip was of S-Blue and Spring Green. The third three inch strip was of S-Blue and Jade. All of the thread in warp and in weft is 2/17's worsted.

Then began a series of treadling sequences. First we used just one thread, then two colors in the weft, and finally, we doubled one thread, and then we doubled the other thread in the weft, using various colors in the weft. We began to like the effect of this very much, but then we thought that the small off-set diamonds (two of them--one small and one large) would show up more if we doubled one of the warp threads.

We were so pleased with the results then, that we had a hard time deciding which of the 6 resulting samples we liked the best. I wish that we could have showed you all 6, but it would be impossible, so we let Robin decide which she liked the best, and that is what the sample is.

I might mention that the resulting fabric is fairly heavy, and that it should be washed and pressed, and that it makes a beautiful heavy tailored skirt, and would work just as well in a suit or a top coat.

We would rather experiment like this, and come up with something a little different than do anything else in the shop.

We did have two skirts made of this material, one for Robin, and the other for display in the shop. So, if you ever do get to stop by our shop, please be sure and look at this skirt.

COST OF THIS FABRIC:

We set up on the loom a 12 yard warp, 40" wide, and used the same weight yarn for weft, and the same amount in the weft as was used in the warp. It took in all, some 7 lbs. 4 oz. for the 12 yards of material, so that you can see that it is a fairly heavy fabric. It took about 9 and 2/3 oz. of yarn per yard of fabric, 38" wide, and 36" long. Thus, breaking the cost down, it came to \$3.85 per yard.

This is quite an interesting twill weave as you can see from the sample, and yet, when you look at it, you certainly wouldn't think that it was woven on a twill threading and treadling.

WARP AND WEFT THREADS:

The warp and weft threads were both 2/17's worsted yarns. In the Warp we used S-Blue one thread of it, and the Spring Green was wound 2 ends together and threaded through just one heddle.

In the weft, we used the S-Blue as a single thread, and we used the Jade thread doubled with 2 ends on one bobbin and it was used as a single thread.

These 2/17's come on 1/2 lb. cones, have approximately 4700 yards to the pound, and are \$6.80 per lb. They are available from Robin & Russ Handweavers. Postage is extra.

A D V E R T I S I N G

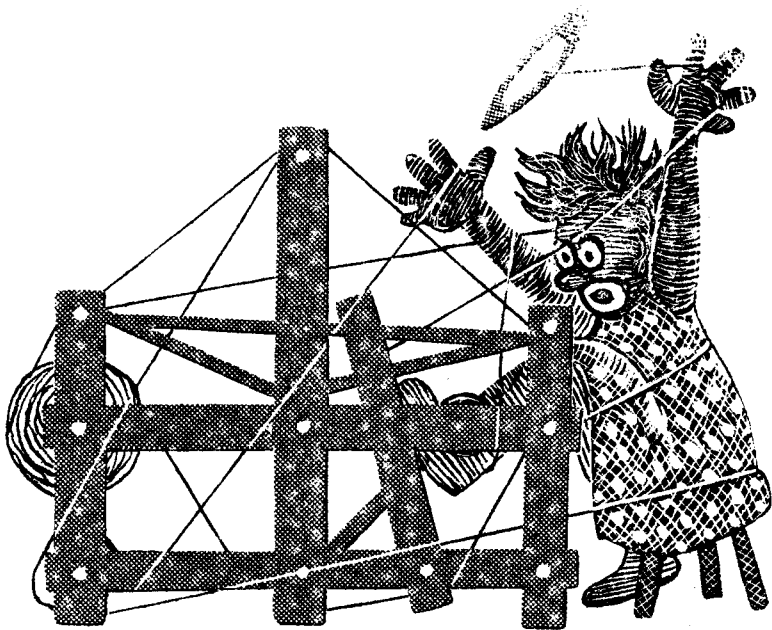
FINE SPUN SILK WARP, size 36/2/2, with 15000 yards per lb., on cones of 3/4 to 1 lb. each. Natural white in color. Price is \$7.00 per lb.

LINEN NUB WITH VISCOSE. A nice combination yarn, 2400 yards per lb., cones of about 1 1/2 lbs. each, in Natural viscose with white linen nub. Regularly \$3.50 per lb., --close-out this lot of 75 lbs. only at \$2.40 per lb.

COLOR WHEELS. A nicely made color wheel for help in proper color selection. \$1.00 each, plus 10¢ postage.

50% LINEN, 50% SILK COMBINATION. size 10/1 with 8400 yards per lb., in natural. Excellent for weft in dress materials, or in drapes, particularly casement sheers. On cones of about 1 lb. each, \$3.50 per lb.

ALL OF ABOVE ITEMS ARE AVAILABLE FROM ROBIN & RUSS, 632 Santa Barbara Street, Santa Barbara, Calif.



DRAFTS AND DESIGNS

A guide for 5 to 12
harness weaves

Volume 2, No 4, December 1959

I HOPE, I HOPE DIAMOND:

A material for sport shirts, for dress yardages, blouse material, etc., made of a cotton and silk combination.

THREADING DRAFT:

8	X				
7		X			X
6			X		X
5			X		X
4			X		X
3			X		X
2			X	X	
1			X		

WARP: 12/3 Spun Silk, Natural.

WEFT: 20/2 Egyptian cotton, color Forrest Green.

REED USED: A 12 dent reed was used, and it was sleyed 4 ends per dent, or 48 threads per inch.

ABOUT THE SAMPLE:

The sample this month is another of the many extended point twill variations. We have given you both the treadling for this sample, and also two other alternate treadlings that you can use on this same set-up.

We used the 12/3 spun silk, at 48 threads per inch, but I actually think it would have been better if we had used this at 40 per inch. I think that if you do this, it would have beat in a little closer, and the two diamonds in the

SAMPLE

Sample on next page

sample would be a little smaller and closer together, and make a more interesting fabric than this sample.

We used this same silk warp, and a size 20/2 cotton, color Popcorn, for weft, and it made a much prettier material than when you use such a contrast in colors as we did in the sample.

We had this made up into a short sleeve sport shirt, and I know that I certainly do enjoy it. We also wove on the same warp, a pale beige, and a grey green in the 20/2 Egyptian cotton weft, and all of these made up into exceptionally nice sport shirts.



DRAFTS & DESIGNS

Published monthly (except July and August) by Robin & Russ Handweavers, 632 Santa Barbara Street, Santa Barbara, California.

SUBSCRIPTIONS: \$4.00 per year. Back issues or single copies, 50¢ ea. Yearly subscriptions start with the September issue. If you subscribe after September, back issues from September on will be mailed to you, unless you specify that you want your subscription to start with the next September issue.

VOLUME 2, Number 4, December, 1959

We used slightly different treadling variations on each of the sport shirts, and they certainly made a very nice Christmas gift for my father and brother.

TREADLING SEQUENCE FOR SAMPLE:

A no tabby weave, you have just one repeat of each treadle in this particular sample. Here is the treadling.

1,2,3,4,5,6,7,8,7,6,5,4,3,2,1,8,7,6,5,4,3,2,1,2,3,4,5,6,7,8, and repeat.

An alternate treadling that will work out satisfactorily on this set-up is as follows:

1,2,3,4,3,2,1,8,7,6,5,6,7,8,1,2,3,4,5,6,7,8,7,6,5,4,3,2, and repeat.

Still another alternate treadling that we found worked satisfactorily is:

1,2,3,4,5,6,7,8,7,6,7,8,7,6,5,4,3,2,1,2,3,2, and repeat.

Of course, if you want a ribbed herringbone effect, you would treadle as follows:

1,2,3,4,5,6,7,8,7,6,5,4,3,2, over and over.

COST OF MATERIALS:

The 12/3 spun silk comes on approximately 1/2 lb. cones, and is \$8.00 per lb.

The 20/2 Egyptian cotton comes on 1/2 pound cones, and is \$5.00 per lb. It is available in about 90 colors.

COST OF THE FABRIC:

The warp, sett at 48 per inch, as we did it comes to \$1.60 per yard. One pound of the 12/3 spun silk will do a 5 yard warp, 40" wide, when it is sett at

48 per inch. If you use it at 40 per inch as I suggest, it will then come to \$1.35 per yard, and one pound will do a 6 yard warp.

The weft of 20/2 cotton, as we used it, one pound, is enough for from 6 to 7 yards of material, depending upon the weaver and how tightly he beats the weft. I found that I could get 6½ to 7 yards from one pound, and thus the weft came to approximately 75¢ per yard. The total fabric cost if the warp is sett at 48 per inch would be \$2.35 per yard, and if sett at 40 per inch, it comes to \$2.10 per yard.

TIE-UP DRAFT

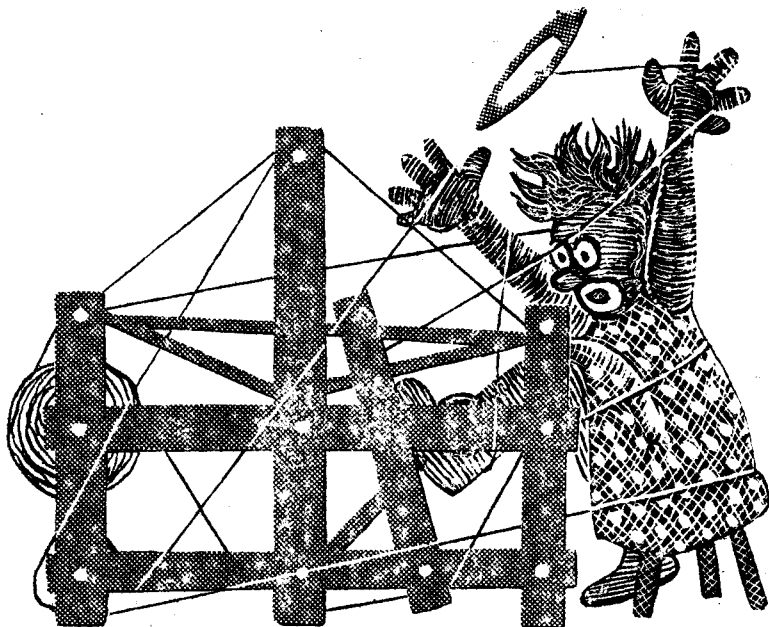
8								
8			X		X	X	X	
7		X		X	X	X		
6		X	X	X	X			
5	X		X	X	X			
4		X	X	X				X
3	X	X	X				X	
2	X	X				X		X
1	X				X		X	X
	1	2	3	4	5	6	7	8

ADVERTISING:

New items, just arrived in stock.

1. SILK BOUCLE, with a high sheen, in a beautiful spun silk. It has about 3500 yards per lb., and is extremely light and soft to the touch. \$5.50 per lb. while it lasts. Just 40 lbs. available.
2. 36/2/2 SPUN SILK WARP. A beautiful white spun silk, 4 ply, warp thread with 15,000 yards per lb. It works well as warp at 50 to 60 per inch, and one of our customers said that it worked beautifully at 54 per inch. \$7.00 per lb., on cones of about 3/4 to 1 pound each.
3. LINEN & VISCOSE COMBINATION, on cones varying in size from 3/4 lb. to 1½ lbs. each. 2,500 yards per lb. The three new colors available are combinations.
 1. Natural Grey with white nub
 2. Natural grey with pale yellow nub
 3. Natural grey with pale blue nubThis is \$3.50 per lb. Postage is extra on all items.

--Russell E. Groff, Editor.



DRAFTS AND DESIGNS

A guide for 5 to 12
harness weaves

Volume 2, #5, January, 1960

RAMIE TWILL:

An unusual 12 harness twill threading that will make excellent place-mats, table linens, and which, if used properly, can be used for many other fabrics.

THREADING DRAFT

12											X
11											X
10											X
9											X
8											X
7											X
6											X
5											X
4											X
3											X
2											X
1											X

WARP USED:

The warp used in this fabric is a 40/2 bleached white Ramie.

WEFT USED:

The weft used on this sample is a 20/2 natural Ramie, used tripled on the bobbin. That is, three ends were wound together on one bobbin, making a heavy weft thread.

THREADS PER INCH IN WARP:

The 40/2 bleached white Ramie has been threaded 4 threads to each heddle, or a total of 48 threads per inch.

SAMPLE:

Sample on next page

REED USED:

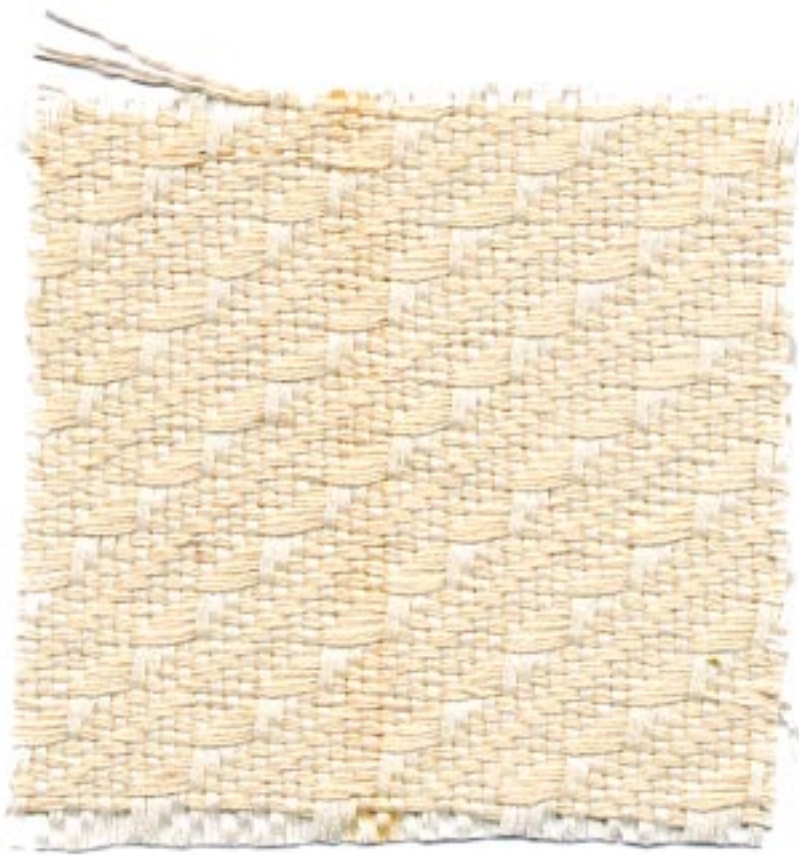
A 12 dent reed was used, and there are 4 threads in each dent, making 48 per inch.

TREADLING FOR THIS SAMPLE:

The treadling for this sample was a straight progression of 1, 2, 3, 4, 5, 6, 7, 8, 9, 10, 11, 12, and repeat over and over.

ALTERNATE TREADLING:

You might try this alternate treadling. It also gives an unusual effect. Repeat this as follows: 4, 3, 2, 1, 2, 3, 4, 8, 7, 6, 5, 6, 7, 8, 12, 11, 10, 9, 10, 11, 12, and repeat over and over.



DRAFTS AND DESIGNS

Published monthly (except July and August) by Robin & Russ Handweavers, 632 Santa Barbara St., Santa Barbara, California.

SUBSCRIPTIONS: \$4.00 per year.
Back issues or single copies, 50¢ ea.
Yearly subscriptions start with the September issue. If you subscribe after September, back issues from September on will be mailed to you, unless you specify that you want your subscription to start with the next September issue.
VOLUME 2, Number 5, January, 1960.

TIE-UP DRAFT:

12				X		X			X		X	
11			X		X			X		X	X	
10		X		X			X		X	X	X	
9	X		X			X		X	X	X	X	
8	X		X			X		X				
7	X			X		X	X				X	
6	X			X		X	X	X			X	
5		X		X	X	X	X		X		X	
4		X		X					X		X	
3	X		X	X				X		X		
2		X	X	X			X		X		X	
1	X	X	X	X		X		X			X	
	1	2	3	4	5	6	7	8	9	10	11	12

MORE ABOUT THIS FABRIC:

I want to mention first that this is one of the patterns that I learned about while attending the weaving classes at the Banff School of Fine Arts several years ago, and it was there that I was able to take the fabric, draw it down on paper, and figure out the threading and treadling. And as I didn't have the set-up on paper, that is exactly what I did this time before we set-up the loom. I took the mat that I had made at Banff, and from it, figured out the set-up, etc. We did change it quite a bit though, using a fine thread in the warp, and putting 4 threads in one heddle for a heavier weight, and also tripling the weft thread.

We are going to use the extra material that we wove of this for a table cloth and place-mats. On one of the extra pieces we wove for a table cloth, we took three different colors of the 16/2 sunfast and washfast Ramie and wound it all together, and used it as weft in the

typical Swedish manner, and it is quite a striking piece. We still have about three yards on the loom, and so we will do some experimenting with it even yet, using other treadlings, and other weft threads.

I should also mention that we tried a 6 strand cotton floss for weft, and after finding it not quite heavy enough, we doubled it, and found that this worked out beautifully also. We experimented with both the egg-shell and the bleached white floss, and we all liked the egg-shell color best. I imagine that perle 3 cotton and other threads about the same in weight would work out just as satisfactorily on this sample as did the Ramie and the 6 strand cotton floss.

When you use the alternate treadling that I have given, you will find that it makes a figure somewhat like 1/2 of a diamond. Thus, if you would use instead of a straight twill threading draft as in this sample, a point twill, that is, 1 to 12 and then back to 1, and use the same tie-up, that it also would make an almost perfect diamond, in a heavy accent thread or float thread with the background in plain ribs and plain weave. You would of course use the same tie-up on the point twill as you would use on the plaintwill threading draft.

COST OF THE FABRIC:

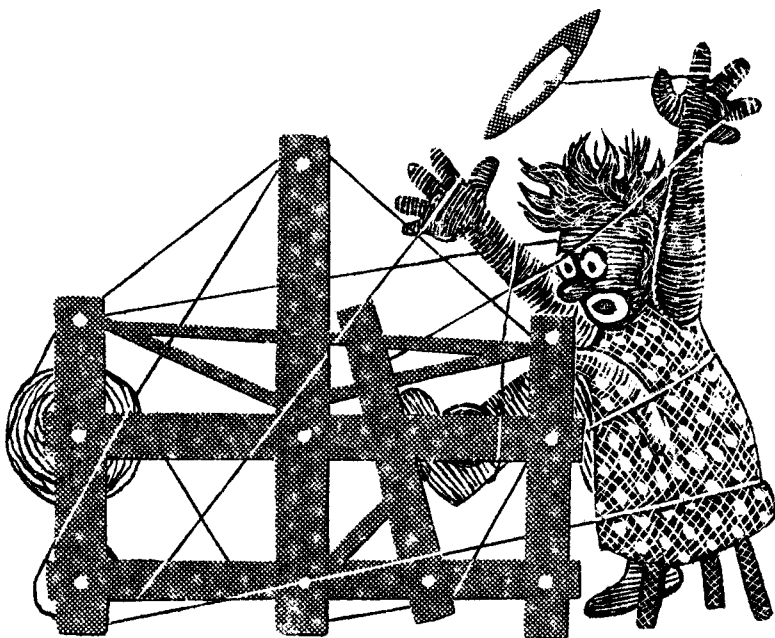
A. The 40/2 bleached white Ramie comes on one pound cones, and it is \$4.50 per lb., with 6,000 yards per pound.

B. The 20/2 natural Ramie comes on one pound cones, and it is \$3.20 per lb., and it has 3,000 yards per lb.

C. Our warp was set-up on the loom, 40 inches wide, 48 threads, per inch, and so the actual cost of the warp per yard length, 40" width came to \$1.45 per yard. You can get a three yard warp from one pound of the 40/2 bleached white.

D. The weft used was the 20/2 natural Ramie, and as we tripled it, we used three one pound cones, and from this three pounds, we found that we were able to weave 5½ yards of material. Thus, the weft per yard came to \$1.75 per yard.

WARP COST PER YARD.	\$1.45
WEFT COST PER YARD.	\$1.75
<u>FABRIC COST PER YARD.</u>	<u>\$3.20</u>



DRAFTS AND DESIGNS

A guide for 5 to 12
harness weaves

VOLUME 2, No. 6, February, 1960

A RAMIE TABLECLOTH

An unusual 8 harness weave which is mistakenly called a Barleycorn weave in the new book, "Swedish Hand Weaving" by Malin Selander.

WARP USED:

We used 16/2 Ramie from Switzerland in an Eggshell white color for the warp. It was set at 30 threads per inch, 2 per cent in a 15 dent reed.

WEFT USED:

We used 16/2 Ramie from Switzerland in a Mist Grey color in the weft.

THREADING PLAN FOR TABLECLOTH

Note that we set up the loom for these tablecloths, 40 and 2/3" wide, using a total of 1219 threads in all. Here is the set-up as we did it.

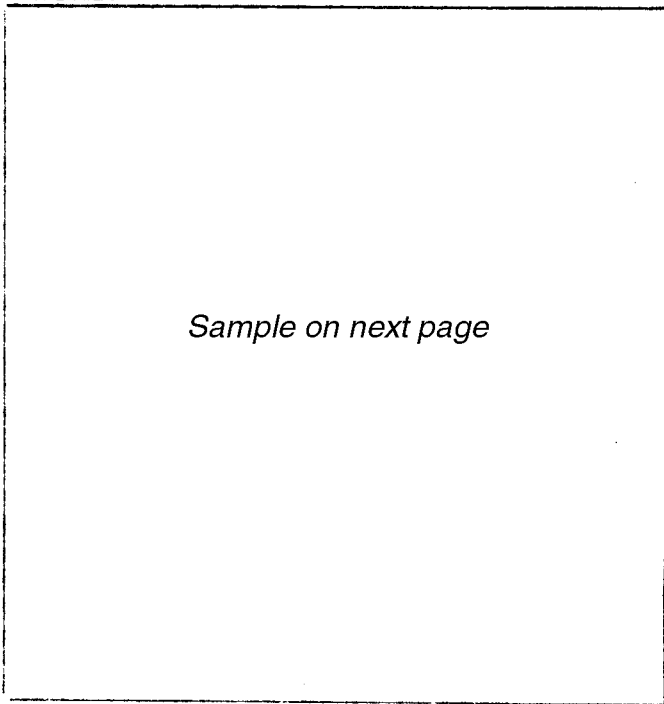
Right Border-2 times----68 threads
A & B-repeated 9 times--1026 threads
A--to balance-----57 threads
Left Border-2 times----68 threads
TOTAL NO. OF WARP ENDS 1219 threads

TREADLING:

The treadling is quite simple and easy, and this is just a one shuttle weave, so you will find that it weaves much faster than you would normally expect it to.

THE TREADLING IS EXACTLY THE SAME AS THE THREADING DRAFT. If you repeat the borders twice in your threading draft repeat the border twice in the treadling, and then go on to the A and B unit of the pattern. Be sure to end up with the A unit before you repeat the other border.

SAMPLE:

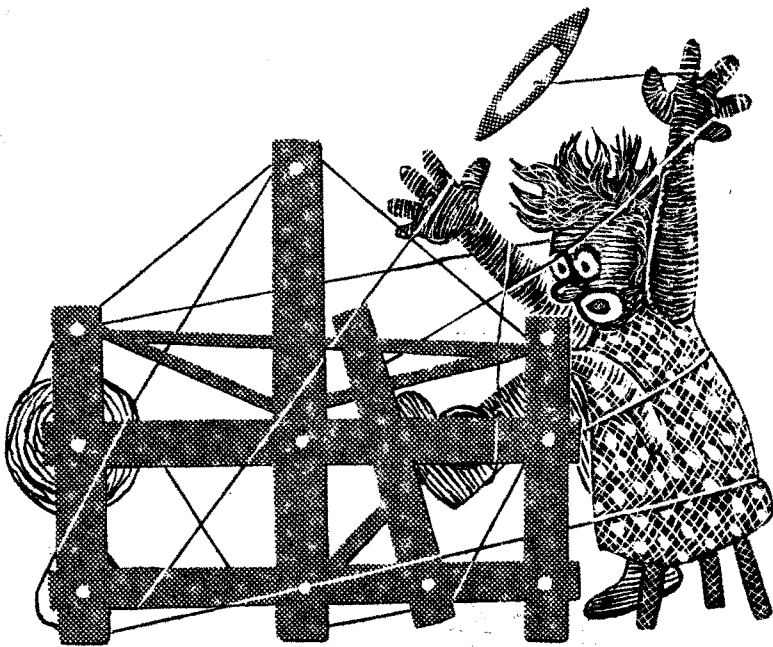


Sample on next page

TIE-UP DRAFT:

8	X				X	X	X		
7		X			X	X		X	
6			X		X		X	X	
5				X		X	X	X	
4	X	X	X		X				
3	X	X		X		X			
2	X		X	X			X		
1		X	X	X				X	
	1	2	3	4	5	6	7	8	





DRAFTS AND DESIGNS

A guide for 5 to 12
harness weaves

Volume 2, No. 7, March, 1960

THREADING DRAFT AND PLAN FOR PLACE-MAT--Draft is given in the profile manner.

B	X X XXX	XXX X X	X X XXX	XXX X X	
A	X X XX	XXXXXX	XX X XXXXXXXXXX	X XX XXXXXX	XX X X
	1111 2 3 6	3 2 111	14	111 2 3 6	3 2 1111

PLACE-MATS IN A 2 BLOCK DAMASK

An interesting 10 harness Damask weave, that makes nice place-mats, and which can be used for tablecloths and other items.

WARP USED:

A 20/2 natural linen, exceptionally nice quality, is the warp thread in this particular set-up. \$4.40 per lb.

WEFT USED:

The 20/2 Bleached White Ramie was used for weft. It is a nice quality, comes on 1 lb. cones, and is \$3.20 per lb.

REED USED:

A 12 dent reed was used, and it was sleyed 2 ends per dent, or 24 threads per inch.

WIDTH OF WARP:

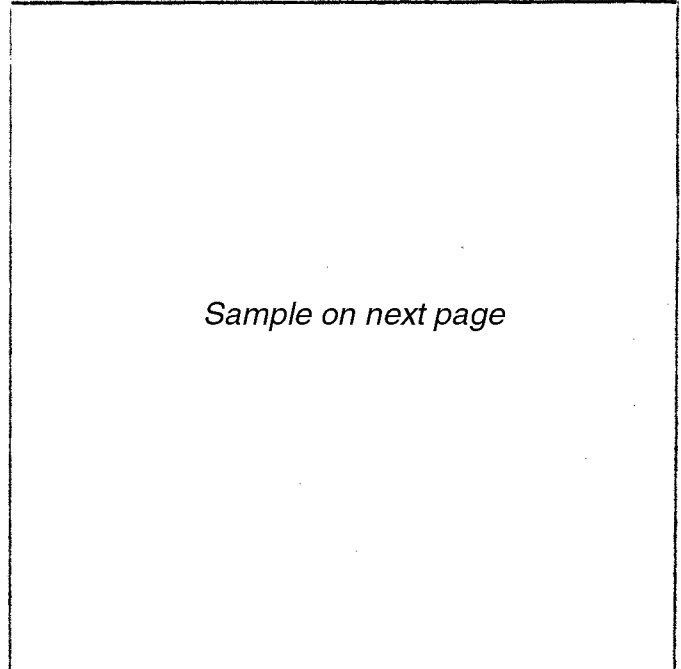
The warp was set up 24 per inch, and it was 300 ends wide, or 12½" wide.

MORE ABOUT THE PROFILE DRAFT:

There are two main units or blocks in the above profile draft. The first block or the A block is 5 threads in a damask, threaded 1,2,3,4,5. The second block or B block is threaded 6,7,8,9,10. The blocks of a damask are always at least 5 threads. In order to have a 3 block damask weave, you would need 15 harnesses. One to 5 would be for the A block, 6 to 10 for the B block, and 11 to 15 for the C block.

You will note under the profile draft a series of numbers. This tells you how

SAMPLE



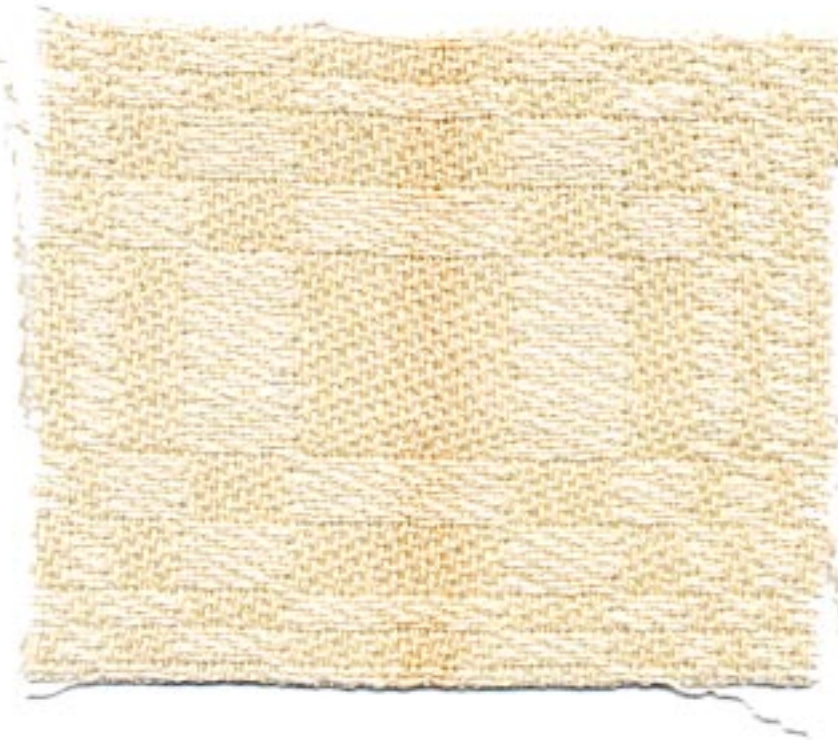
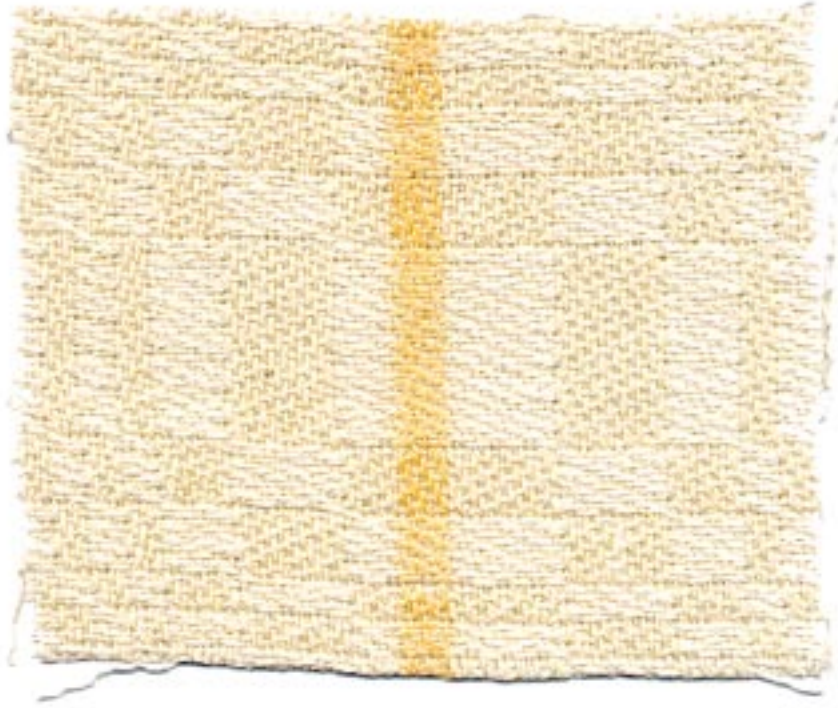
Sample on next page

many times you repeat each of the various blocks in your set-up.

If we had given the threading draft here in the regular manner, it would have taken up most of either the front or back page. Thus, you can see one of the great advantages of writing the profile type of draft.

MORE ABOUT THIS MONTH'S SAMPLE:

The sample this month was planned and woven by a weaving friend, Mrs. Norma E. Korn of Saco, Maine. We want to take this



DRAFTS AND DESIGNS

Published monthly (except July and August) by Robin & Russ Handweavers, 632 Santa Barbara St., Santa Barbara, California.

SUBSCRIPTIONS: \$4.00 per year.

Back issues or single copies, 50¢ ea. Yearly subscriptions start with the September issue. If you subscribe after September, back issues from September on will be mailed to you, unless you specify that you want your subscription to start with the next September issue.

Volume 2, Number 7, March, 1960

space to thank her for planning and weaving the samples for us.

TREADLING:

The treadling is exactly the same as the threading draft, except for one minor change. In the center unit, if you are making mats, you will repeat the A unit over and over until you have the desired length for the mat that you want. I will give the treadling here as we normally see it, but you can also use a profile treadling draft if you so desire.

- A, treadles 1 to 5---one time
 - B, treadles 6 to 10---one time
 - A, treadles 1 to 5---one time
 - B, treadles 6 to 10---one time
 - A, treadles 1 to 5---two times
 - B, treadles 6 to 10---three times
 - A, treadles 1 to 5---six times
 - B, treadles 6 to 10---three times
 - A, treadles 1 to 5---two times
 - B, treadles 6 to 10---one time
 - A, treadles 1 to 5---one time
 - B, treadles 6 to 10---one time
 - A, treadles 1 to 5---for center of mat, and to be repeated as often as desired.
 - B, treadles 6 to 10---one time
 - A, treadles 1 to 5---one time
 - B, treadles 6 to 10---one time
 - A, treadles 1 to 5---two times
 - B, treadles 6 to 10---three times
 - A, treadles 1 to 5---six times
 - B, treadles 6 to 10---three times
 - A, treadles 1 to 5---two times
 - B, treadles 6 to 10---one time
 - A, treadles 1 to 5---one time
 - B, treadles 6 to 10---one time
 - A, treadles 1 to 5---one time
- End of one mat.

TIE-UP DRAFT:

10	X	X	X		X						
9		X	X	X	X					X	
8	X	X		X	X			X			
7	X	X	X	X			X				
6	X		X	X	X				X		
5		X					X	X	X	X	
4				X			X	X	X	X	
3			X				X	X		X	
2	X						X	X	X	X	
1				X			X		X	X	
	1	2	3	4	5		6	7	8	9	10
	Block A						Block B				

COST OF MATERIALS USED:

From one pound of the 20/2 linen, making mats 12½" wide on the loom, and allowing approximately 24 inches for each one, which includes hem, etc., you can easily get 12 mats and 2 good sized runners. The warp cost on this would be 44¢ per yard, as this nice quality linen is \$4.40 per lb., and one lb. is enough for a 10 yard warp.

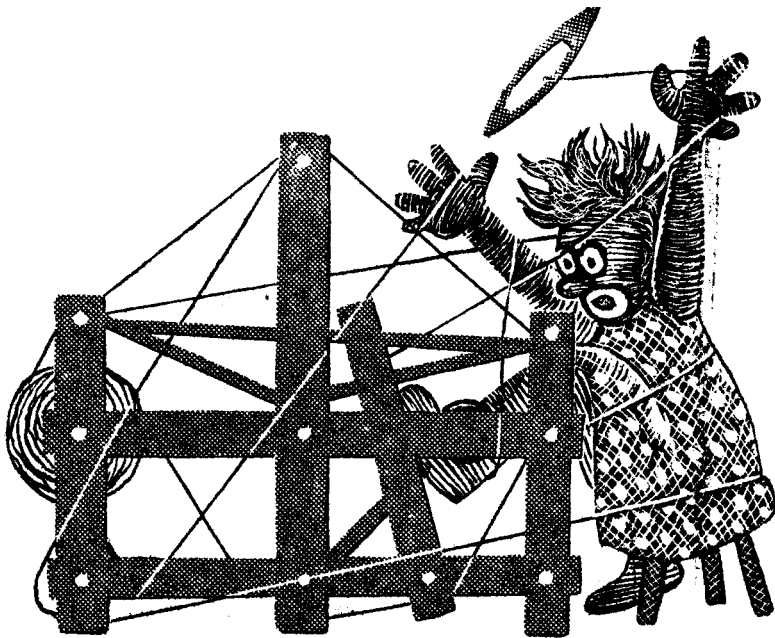
For weft, you would use the Ramie, and for the entire 10 yard warp, one pound would be sufficient, and this would come to \$3.20 or 32¢ per yard in the weft.

Warp cost per yard---- 44¢
Weft cost per yard---- 32¢
Fabric cost per yard-- 76¢

From this, if you allow 20" per mat, you can see that each mat would cost about 40 to 45¢. Of course, many of you would probably want a little wider mat of perhaps 14 or 15 inches in width, and it would cost a little more accordingly.

MORE TREADLING SUGGESTIONS:

The size of blocks may be varied to make any block combination desired. Or a simple treadling of 1 to 10 and repeated over and over gives an interesting wandering vine pattern. Or the A block repeated twice, the B block repeated twice, and this whole unit repeated over and over gives another interesting pattern. Within the limitations of two blocks---threaded 1 to 5 and 6 to 10 and treadled the same, the sky's the limit on designing damask for 10 harnesses.



DRAFTS AND DESIGNS

A guide for 5 to 12

harness weaves

Volume 2, No. 8, April 1960

THREADING DRAFT:

8	A A A	A A A	
7	A A A	A A A	
6	W W W W W W		
5	W W W W W W		
4		W W W W W W	
3		W W W W W W	
2		G G G	G G G
1		G G G	G G G

TIE-UP DRAFT:

8		X			X	X	X	
7	X			X		X	X	
6	X	X		X			X	
5	X	X	X				X	
4				X	X	X		X
3			X		X	X	X	
2		X	X	X		X		
1	X		X	X	X			
	1	2	3	4	5	6	7	8

DOUBLE FLUFF

A fabric woven in a type of double weave, for use as a crib cover, or a couch throw.

WARP:

The warp used in the project here was 2/18's Fabri, with 4800 yards per lb.

WEFT:

The weft used in this project was the same as the warp, 2/18's Fabri, and the same three colors were used.

TREADLING SEQUENCE:

The treadling sequence is as follows, and to use less space, I will give it in blocks of color.

Treadle 1-2-1-2-1-2 with Grey Fabri.

Treadle 3-4 alternately for 12 shots using White Fabri.

Treadle 1-2-1-2-1-2 with Grey Fabri.

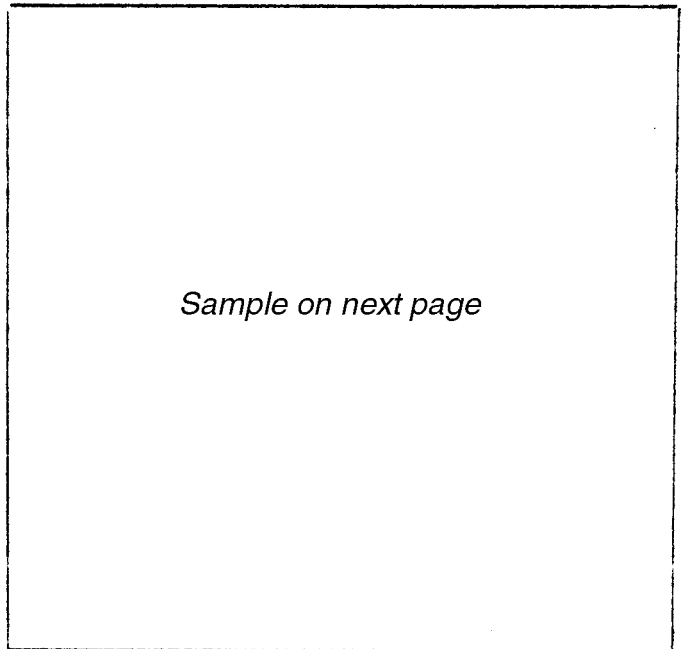
Treadle 5-6-5-6-5-6 with Sea Moss Green Fabri.

Treadle 7-8 alternately for 12 shots using White Fabri.

Treadle 5-6-5-6-5-6 with Sea Moss Green Fabri.

Repeat over and over.

SAMPLE:



Sample on next page

KEY TO COLORS USED IN THE WARP:

A--Sea Moss Green

W--White

G--Grey

REED USED:

A 15 dent reed was used, and it was sleyed two per dent, or 30 threads per inch.



DRAFTS AND DESIGNS

Published monthly (except July and August) by Robin & Russ Handweavers, 632 Santa Barbara St., Santa Barbara, California.

SUBSCRIPTIONS: \$4.00 per year.
Back issues or single copies, 50¢ ea.
Yearly subscriptions start with the September issue. If you subscribe after September, back issues from September on will be mailed to you, unless you specify that you want your subscription to start with the next September issue.
VOLUME 2, Number 8, April, 1960

MORE ABOUT THE PATTERN:

There are many possibilities with this pattern. I wish that I had the time to sett it at 60 per inch, and I think that it would make unusual material for a coat, and would be close enough that the floats would be O.K. This is a woman's coat that I am referring to.

Our first thought in weaving this was to suggest the use of it in a Crib Blanket or Crib Cover. However, I also think that it would work very well as a lap robe or a couch throw, and of course you could use any color combination that you desire.

Our first sample of this was done with an aqua, grey, and white, and I think that the color combination was a very pleasing one, but the one with the dark "Sea Moss Green" is the more striking of the two.

We were first introduced to this pattern by Mrs. Bryant R. Smith of the Sonoma County Weavers Guild. Then checking further, we found that it is in the Recipe Book, by Mary Atwater.

This, you know, was reprinted a few years ago, and is still available at \$8.00 plus postage. You will find that it is an excellent source of not only 4 harness patterns, but multiple harness patterns. It is available from our shop if any are interested.

The sample in this month's issue has been washed and pressed, to see how much firmer and how much less the float would be after it was washed and pressed.

COST OF THE FABRIC:

A 12 yard warp of the fabri, 40" wide 30 per inch, would cost \$20.40 if in one color. Thus the warp would cost \$1.70

per yard, and the weft would cost the same. However, using three colors in the warp and weft, would make it cost a little more.

Warp cost per yard. \$1.70 to \$1.85.

Weft cost per yard. \$1.70 to \$1.85.

FABRIC COST PER YARD \$3.40 to \$3.70

The fabri of yarns used in the warp and weft are \$6.80 per lb., or in less than 1 lb. of a color is \$1.00 per 2 oz. skein.

--Russell E. Groff, Editor

ADVERTISING

Warp and Weft
Back Issue Sale

Complete sets of 1954, 1955, 1956, 1957 and 1958 issues are reduced to make more storage room. Complete yearly issues are \$3.00. They are now on sale at \$1.75 per each complete year's set.

As a special offer, if anyone purchases a set of 3 or more years, we will include **FREE OF CHARGE** ten of the mimeographed issues which were put out before we took over the publication.

Postage on one year's back issues is 12c. If 3 or more years back issues are ordered, postage will be prepaid.

Robin & Russ
632 Santa Barbara Street
Santa Barbara, California

OUT OF PRINT BOOK SALE

"How to Weave Linens", by Edward Worst, and "Footpower Loom Weaving", by Edward Worst, are now officially out of print.

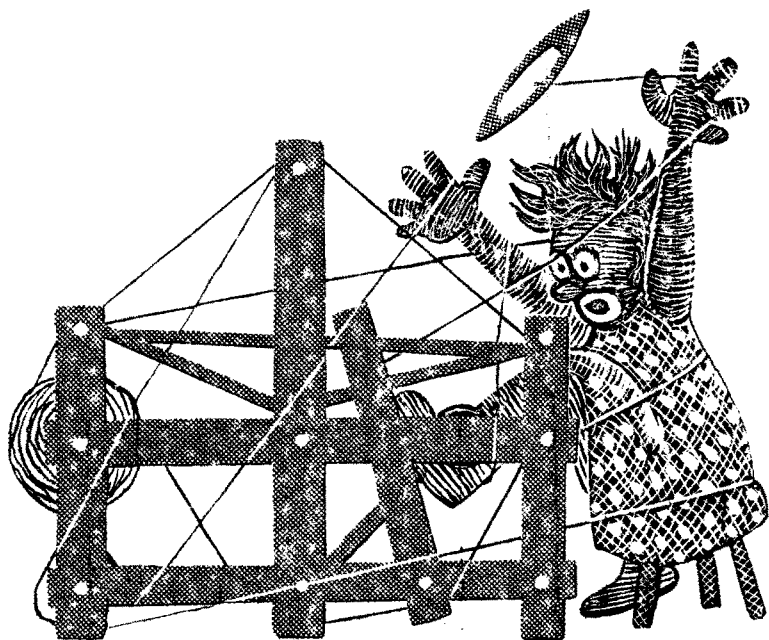
A few copies of each are available at reduced prices, while they last.

HOW TO WEAVE LINENS--regularly \$5.50
ON SPECIAL AT \$4.50 each.

FOOT POWER LOOM WEAVING--regularly \$7.50
ON SPECIAL AT \$6.25 each

Parcel post charges 14c per book

Robin & Russ Handweavers
632 Santa Barbara Street
Santa Barbara, California



DRAFTS AND DESIGNS

A guide for 5 to 12
harness weaves

VOLUME 2, Number 9, May 1960

SCALLOPS, TREES, AND ARROWS:

An interesting 6 harness overshot weave, featuring borders which can be used in aprons, skirts, pillows, etc.

THREADING DRAFT:

Instead of taking up all the room usually necessary to write out the draft, as this is a 6 harness point twill, we will repeat the threading here, and go on to other information.

THREADING:

1, 2, 3, 4, 5, 6, 5, 4, 3, 2, and repeat over and over.

WARP:

The warp used was a 20/2 avocado green Egyptian cotton, with 8400 yards per lb., cost \$5.00 per lb.

WEFT:

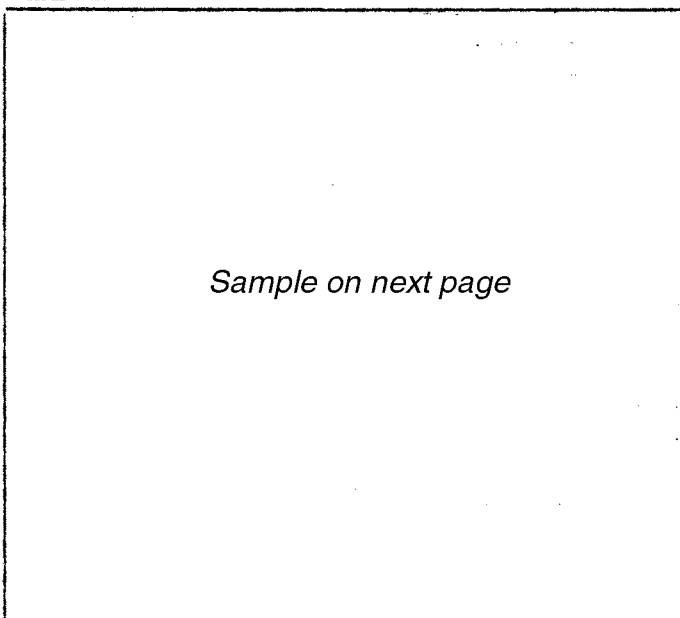
The tabby thread in some of the samples was the 20/2 avocado Egyptian cotton in some of the samples, and in others, we used a 20/2 spun rayon in the same avocado color.

The pattern thread in wool was in red, and black, and it was a 3 ply sport yarn. It is \$1.80 per 4 oz. skein, or \$6.80 per lb. It comes in about 40 different colors in all.

REED USED:

A 15 dent reed was used, and it was sett 2 per dent, or 30 per inch.

SAMPLE:



Sample on next page

TREADING SEQUENCE FOR SAMPLE:

Note: Tabby is understood between each pattern treadle, unless specified differently.

Sequence:

- A. 1,2,3,4,5 black wool
- B. 8 tabby shots, 20/2 cotton
- C. 5,4,3,2,1 black wool
2,3,4,5 in red wool
- B. 8 tabby shots, 20/2 avocado
- D. 5,4,3,2,1 black wool
- B. 4 tabby shots
- D. 1,2,3,4,5 black wool
- B. 8 tabby shots
- C. 5,4,3,2 in red wool
1,2,3,4,5 in black wool
- B. 8 tabby shots in 20/2 avocado
- A. 5,4,3,2,1 in black wool



DRAFTS AND DESIGNS

Published monthly (except July and August) by Robin & Russ Handweavers, 632 Santa Barbara St., Santa Barbara, California.

SUBSCRIPTIONS: \$4.00 per year.
Back issues or single copies, 50¢ ea.
Yearly subscriptions start with the September issue. If you subscribe after September, back issues from September on will be mailed to you, unless you specify that you want your subscription to start with the next September issue.
VOLUME 2, Number 9, May 1960

TIE-UP DRAFT

6							X	
5				X	X			
4			X	X			X	
3			X	X	X	X		
2		X	X	X	X			X
1	X	X	X	X	X	X		
	1	2	3	4	5	6	7	

MORE ABOUT THIS PATTERN:

This is a particular interesting and exciting pattern to weave. There were several other things to tell you about this pattern.

First, I think that if you sett it 24 per inch, you would have a little wider border or pattern.

Secondly, you could on an 8 harness loom use this pattern so that the pattern could be separated from the next pattern repeat by an area of plain weave. You could have for instance, an area of 3 or 5 diamonds, one or two inches of plain weave, and then another area of diamonds. I am not referring to weaving lengthwise, but width-wise in the border. In fact, I think that we will set this up again on the loom for some experiments in shirts, etc., doing just this, and putting the plain weave areas between borders and harnesses 7 and 8.

There are several other very interesting border effects that you can achieve. You can make trees, you can make an interesting arrow, you can make elongated diamonds, etc. Here are a few of the different treadlings that we experimented with.

TREE TREADLING:

- A. 4,5,5,5,5,5 in dark brown
- B. 1,2,3,4,5 in medium or kelly green

ARROW TREADLING:

- A. 4,5 in bright red.
- B. 5,5,5,5,5,5,5 in black
- C. 1,2,3,4,5 in black or white

ELONGATED DIAMOND:

5,4,3,2,1,1,1,1,1,1,2,3,4,5

HOUSE WITH TV ANTENNA:

1,1,1,1,1,1,2,3,4,5,5,5,5,5,5,1,5,5

SCALLOPS:

Either 1,2,3,4,5 or 5,4,3,2,1

NOTE ABOUT PATTERN THREAD:

For a pattern thread, we used a fairly heavy 3 ply wool sport yarn for border. However, if you do not want to combine wool and cotton, you can use a perle 3 cotton or a perle 5 cotton for border, or perhaps even a fairly uniform cotton or rayon boucle.

--Russell E. Groff, Editor

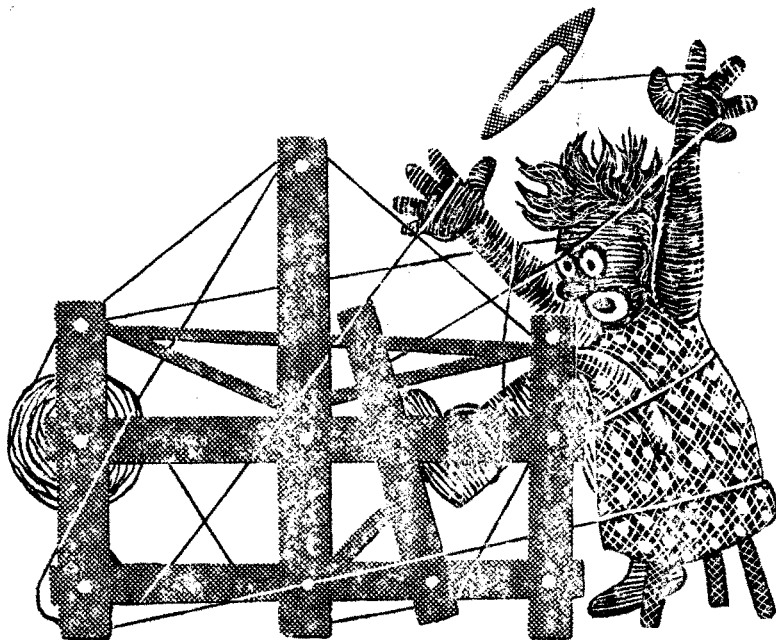
Yarn Specials Good until July 1.

YARN SPECIALS (WHILE THEY LAST)

1. 20/2 Durene Cotton, natural on 2 to 3 lb. cones \$1.80 per lb. Minimum 1 cone.
2. 3/16" and 1/4" Wide Gold Metallic on original metal spools, \$1.50 each, no spool deposit.
3. 1/64 Supported Copper and Silver Metallic on Original Lurex Spools. 50 spools of each, regularly \$3.50 plus deposit. Reduced to clear at \$2.00 each, no spool deposit.
4. NATURAL, 3/4 CARPET WARP, on 2 lb. cones. \$2.00 per 2 lb. cone.
5. 12 cut, RAYON CHENILLE, normally \$4.40 per lb. On cones of 1½ to 2 lbs. each. \$2.40 per lb. Natural color only.

POSTAGE EXTRA ON ALL ORDERS

Robin & Russ, 632 Santa Barbara Street, Santa Barbara, Calif.



DRAFTS AND DESIGNS

A guide for 5 to 12

harness weaves

VOLUME 2, Number 10, June 1960

JUNE BRIDE:

A fabric woven of silk and cotton for a wedding dress for a June Bride. This is an 8 harness overshot, and actually is one of the members of the extended point twill family.

THREADING DRAFT:

8			X	X		
7			X	X	X	X
6			X	X	X	
5			X			X
4			X			X
3		X				X
2	X	X			X	X
1	X	X			X	

TIE-UP DRAFT:

8			X			X
7			X	X	X	
6				X		X
5				X	X	
4	X					X
3	X				X	
2	X	X				X
1	X				X	
	1	2	3	4	5	6

WARP:

The Warp was the 36/2/2 lustrous spun silk, which is actually a 4 ply, and has some 15,000 yards per lb.

WEFT:

Two threads are used in the weft and they are:

- A. 36/2/2 spun silk for tabby
- B. 20/2 sky blue Egyptian cotton for the pattern thread.

Sample on next page

REED USED:

The reed used was an 18 dent reed, and there were 3 ends of the 36/2/2 spun silk per dent, or a total of 54 threads per inch.

TREADLING: A tabby or binder thread is used after each shot of pattern, and it is understood and not given in the treadling below. Of course, tabby in this case is on treadles #5 and #6.

1. Treadle #1 -- 3 times
 2. Treadle #2 -- 3 times
 3. Treadle #1 -- 3 times
 4. Treadle #3 -- 3 times
 5. Treadle #4 -- 3 times
 6. Treadle #3 -- 3 times
- REPEAT OVER AND OVER



DRAFTS AND DESIGNS

Published monthly (except July and August) by Robin & Russ Handweavers, 632 Santa Barbara Street, Santa Barbara, California.

SUBSCRIPTIONS: \$4.00 per year.

Back issues or single copies, 50¢ each. Yearly subscriptions start with the September issue. If you subscribe after September, back issues from September on will be mailed to you, unless you specify that you want your subscription to start with the next September issue. VOLUME 2, Number 10, June 1960

MORE ABOUT THE FABRIC:

First of all, we want to give credit where credit is due. This fabric was inspired by 3 small swatches sent to us by Mrs. Elsie H. Gubser of Tulsa, Oklahoma. Mrs. Gubser purchased some of this 36/2/2 spun silk and experimented with it. She was planning on weaving a wedding dress for her grand-daughter, and she kindly shared her experiments with us. She did an 8 harness and then a 10 harness and a 12 harness sample. Of course, we liked the 12 harness sample the best, but we did the 8 harness for this issue because we thought that more of you would have 8 harness looms rather than 12 harness looms. Perhaps someday, we might do the 12 harness pattern, as in it, you can weave a small flower with the outer petals of one color, and the inner part or center of the flower another color. It is a very striking sample that Mrs. Gubser sent us.

We experimented with the 54 threads per inch, and the 36/2/2 silk warp and tabby, and couldn't find the proper silk to use for the pattern threads, so we finally turned to the Egyptian cotton. This worked out quite satisfactorily, but I do know that if we could have found the proper weight of silk that it would have resulted in an even softer material than the sample is. However, we were very pleased with the results of the cotton. Also, I might mention that a wedding dress is normally all white or cream colored, and we used this blue just to set off the pattern a little better, so that you could see it to better advantage in Drafts and Designs.

You could use the 20/2 natural or white Egyptian cotton for the pattern thread if you desired. I do think that the blue and other pastel colors would work exceptionally well in such items as evening gowns, cocktail dresses, and the like.

COST OF THE FABRIC:

One pound of the 36/2/2 spun silk is enough warp for 7 yards of 40" wide material, at 54 per inch. As the 36/2/2 spun silk is \$7.00 per lb. this makes the warp cost come to \$1.00 per yard.

The Egyptian cotton is \$5.00 per lb., and 1 lb. is enough for from 5 to 7 yards of pattern thread, so along with the tabby and pattern thread, I think at the most the weft would come to \$1.25 per yard.

THUS THE ENTIRE FABRIC WOULD COST \$2.25 PER YARD.

The 36/2/2 spun silk is available from Robin & Russ, and if you would care to have a sample of it and the 90 colors in the Egyptian cotton, we will be glad to send them to you.

--Russell E. Groff, Editor

10/3 SPUN SILK WARP: 8400 yards per lb. Exactly the same size as a 20/2 cotton. On cones of about 1 lb. 2 oz. each. \$8.50 per lb., plus postage.

5 $\frac{1}{2}$ /1 SPUN SILK: A single ply silk that can be used for warp or for weft. It has a rich, natural luster, and makes a beautiful weft thread also. 4800 yards per lb. \$6.50 per lb. plus pp.

NATURAL TUSSAH SILK: Imported from West Germany. On cones of about 1 lb. 4 oz. each. With 10,000 yards per lb. Excellent weft either single or doubled. While it lasts \$3.20 per lb.

3/1 DARK NATURAL SLUBBY TUSSAH SILK, with 2500 yards per lb. Used in many of the silk fabrics from Siam. On cones of about 1 lb. 6 oz. each. \$4.50 per lb. Very large nubs in an irregular spinning.

Write for free samples of any of these silks.