

# drafts and designs

*a guide for 5 to 12 harness weaves*

VOLUME 21, Number 1, September, 1978.

## COLONIAL BLUE:

This fabric, because of both the pattern appearance, and the color, resembles very much, our early traditional colonial bed-spread type patterns.

Actually, it is a warp-faced pattern, with the warp creating all of the pattern. It is a single shuttle weave, is quite easy to weave, and most striking in appearance.

## WARP:

We have used two threads in the warp. One, the 20/2 S.S. egyptian cotton in white, is the background thread. The pattern thread is a heavier size, size 10/2 combed peeler cotton in an Azure Blue color.



## THREADING DRAFT:

8	0 0 0 0 0 0																						
7	0 0 0 0 0 0																						
6	0 0 0 0 0 0																						
5	0 0 0 0 0 0																						
4	0 0 0 0 0 0																						
3	0 0 0 0 0 0								0 0 0 0 0 0														
2	X	X	X	X	X	X	X	X	X	X	X	X	X	X	X	X	X	X	X	X	X	X	X
1	X	X	X	X	X	X	X	X	X	X	X	X	X	X	X	X	X	X	X	X	X	X	X

## TIE-UP DRAFT:

End

8		0	0		0	0		
7			0		0	0		
6			0		0	0	0	
5				0		0		0
4			0	0			0	
3				0			0	
2	X							
1	X							

8	0 0 0 0 0 0																					
7	0 0 0 0 0 0																					
6	0 0 0 0 0 0																					
5	0 0 0 0 0 0																					
4	0 0 0 0 0 0																					
3																						
2	X	X	X	X	X	X	X	X	X	X	X	X	X	X	X	X	X	X	X	X	X	X
1	X	X	X	X	X	X	X	X	X	X	X	X	X	X	X	X	X	X	X	X	X	X

1 2 3 4 5 6 7 8 9

DRAFTS AND DESIGNS:

Published monthly (except July and August), by Robin & Russ handweavers, 533 N. Adams St., McMinnville, Oregon 97128.

SUBSCRIPTIONS: \$8.00 per yard, and back issues or single copies are 85¢ each, plus 15¢ postage. Yearly subscriptions start with the September issue. If you subscribe after September, back issues from then on will be mailed to you, unless you specify that you want your subscription to start with the next September issue.

VOLUME 21, Number 1. September, 1978.

WEFT:

Only one thread is used in the weft, and it is the 20/2 egyptian cotton in the white.

REED USED:

A 15 dent reed was used, and it was sleyed 4 ends per dent, or 60 threads per inch.

WIDTH OF FABRIC:

Our warp was set up 40" wide on the loom, and the finished piece, after it was taken off the loom was 38" wide

THREADS USED:

The 20/2 S.S., or egyptian cotton as it is sometimes called has 8400 yards per lb. It comes on 1/2 lb. cones of 4200 yards, and it is \$10.00 per lb., or \$5.00 per 1/2 lb. tube.

The 10/2 C.P. (combed peeler) cotton is an American cotton, and it has 4200 yards per lb. It comes on 1/2 lb. tubes of 2100 yards, and the price is \$4.50 per 1/2 lb. tube.

There are about 90 plus different colors available in the 20/2 S.S., and about 50 colors available in the 10/2 C.P.

COST OF THE FABRIC:

Two threads are used in the warp, the 10/2 and the 20/2. We had a 13 yard warp, 40" wide on the loom. It took 1 lb. 14 oz. of the 20/2 SS, white for the warp, and it took 3 lbs. 5 oz. of the 10/2 Azure Blue for the warp pattern thread. The white was \$18.75 and the Azure was \$29.81, so the total warp cost was \$48.56 or the cost per yard was \$3.74.

In the weft, we used 1 lb. 8 oz. of the 20/2 SS, White at \$10.00 per lb., or the total weft cost was \$15.00. We had about 12 yards of finished fabric, so the weft cost per yard was \$1.25 per yard.

WARP COST PER YARD, 40" wide---- \$3.74  
WEFT COST PER YARD, ----- 1.25  
FABRIC COST PER YARD ----- \$4.99

A NOTE ABOUT THE TIE-UP DRAFT:

Please note that there are 9 treadles used in the tie-up draft and treadling. We used 9 treadles because the treadling sequence is easier to follow. However, please note that treadle # 3 and also treadle # 9 are both tied up the same. As I mentioned above, it is easier to follow the sequence that way, but if you have only 8 treadles, then you could use # 3 treadle instead of # 9 treadle as it is given in our treadling sequence.

TREADLING SEQUENCE:

In weaving this fabric, you use both feet on the treadles. You hold down the main pattern treadle with one foot, while you treadle six (6) shots of weft, alternating treadles 1 and 2. For instance, the first block of the pattern is done as follows. You hold down treadle 3 with one foot and while you are doing this, you treadle # 1, one shot, then treadle # 2 with one shot; then treadle # 1, one shot, treadle # 2 with one shot; and treadle # 1, one shot, and treadle # 2 with one shot. Then, you hold down the # 4 treadle with one foot, and treadle 1,2,1,2,1,2 with the other foot. Now, here is the complete treadle sequence for one complete pattern repeat.

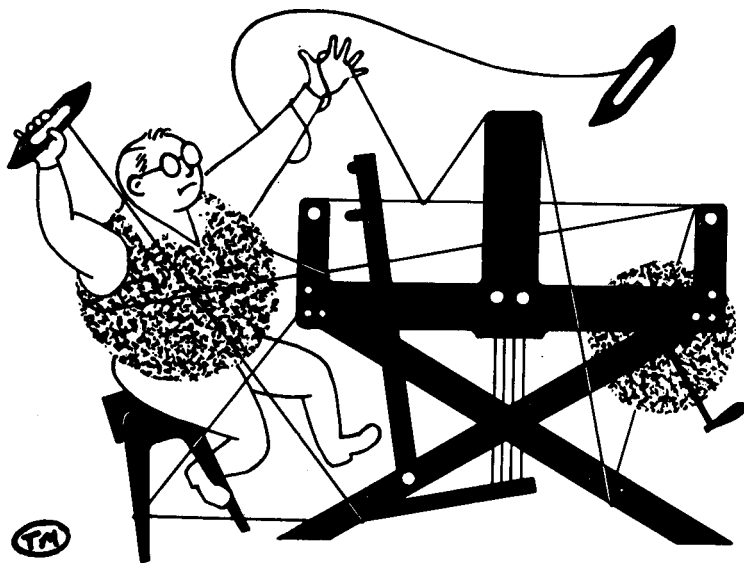
1. Hold down # 3, Treadle 1,2,1,2,1,2.
2. Hold down # 4, Treadle 1,2,1,2,1,2.
3. Hold down # 5, Treadle 1,2,1,2,1,2.
4. Hold down # 6, Treadle 1,2,1,2,1,2.
5. Hold down # 7, Treadle 1,2,1,2,1,2.
6. Hold down # 8, treadle 1,2,1,2,1,2.
7. Hold down # 9, Treadle 1,2,1,2,1,2.
8. Hold down # 8, Treadle 1,2,1,2,1,2.
9. Hold down # 7, Treadle 1,2,1,2,1,2.
10. Hold down # 6, Treadle 1,2,1,2,1,2.
11. Hold down # 5, Treadle 1,2,1,2,1,2.
12. Hold down # 4, Treadle 1,2,1,2,1,2.

Repeat over and over as desired.

MORE ABOUT THE FABRIC:

In this threading or type of pattern, you can have tension problems, with the pattern thread gradually getting looser and looser. And it is important that you keep these threads tight, for a good clear shed and easier weaving. So, if you have 2 warp beams, put the Azure on one beam, and the white on another.

However if you do not have 2 beams, use a heavy, steel, welding rod, and open your shed so all of the blue threads are raised, and slip the rod in this shed just behind the harnesses. Then push this rod straight back over the back beam, and down to the warp beam. Then, take 3 equal weights, and hang one on each end and one in the middle of this welding rod. Use at least 1 to 2 lbs. in each of these three weights. This will then keep the blue thread taut as you weave, which is important in treadling.



# drafts and designs

## *a guide for 5 to 12 harness weaves*

GREEN GODDESS

VOLUME 21, Number 2,

October, 1978

This most interesting 8 harness shadow weave is so full of many different patterns, and as a result has been most intriguing. There are a lot of variations available from this draft, and we have hopes that you'll like this one from the SHADOW WEAVE book that we have published.

WARP USED:

We used 2 colors of the egyptian cotton in our warp, and we designate them as X or O in our threading draft.

X-- 20/2 Egyptian Cotton, Forest Green.  
This is the dark color.

O-- 20/2 Egyptian Cotton, Ocean Green  
This is the light color.

WEFT USED:

The same two colors that are used in the warp, are also used in the weft.

REED USED:

We used a 15 dent reed, 2 ends per dent or 30 threads per inch.

WIDTH AND LENGTH, BEFORE AND AFTER WEAVING.

We did a 13 yard warp, 40" wide on the loom. From this we received 11-1/2 yards of finished fabric, and it came down to 37-1/2" when off the loom, and not under tension.

THREADING DRAFT:

8		O		O		X		X
7		X	X		X	X		O
6		O		O		O		X
5		X		X		X		O
4		O		O		O		X
3		X		X		X		O
2		O		O		O		X
1	X			X		X		O

KEY TO COLORS IN THE WARP:

X -- 20/2 Forest Green --- Dark  
O -- 20/2 Ocean Green --- Light



DRAFTS AND DESIGNS:

Published monthly (except July and August), by Robin & Russ handweavers, 533 N. Adams St., McMinnville, Oregon 97128.

SUBSCRIPTIONS: \$8.00 per year, and back issues or single copies are 85¢ each, plus 15¢ postage. Yearly subscriptions start with the September issue. If you subscribe after September, back issues from then on will be mailed to you, unless you specify that you want your subscription to start with the next September issue.

VOLUME 21, Number 2, October, 1978

COST OF THREADS USED:

The 20/2 S.S. (super sackel) cotton comes in about 95 colors, and comes on 1/2 lb. tubes. It is \$10.00 per lb. or \$5.00 per 1/2 lb. tube. It has 8400 yards per lb.

COST OF THE FABRIC:

In the warp, it took 1 lb. each of the two colors, so the total warp cost for 13 yards, 40" wide was \$20.00. Actually, there was about 1/2 oz. of each color left from the two warp colors. Thus, the warp cost per yard comes to \$1.55.

In the weft, we used 15 oz. of each of the two colors, so the total weft cost for 11-1/2 yards was \$18.75 and the weft cost per yard comes to \$1.63 per yard.

Warp cost per yard, 40" wide --- \$ 1.55  
WEFT COST PER YARD, ----- 1.63  
FABRIC COST PER YARD ----- \$ 3.18

MORE ABOUT THIS FABRIC.

Our sample has not been washed or pressed, and I think this should be done before anything is done with the fabric. If you do wash and press it, I would wash it in hot water, allow it to drip dry, and then give it a good thorough steam pressing.

In the weaving of this piece, there were no problems except in keeping your color sequence and after you have woven several repeats of the pattern, you should have no trouble with this.

It is important that you use a firm, even, double beat. I would suggest that you open the shed, beat, change to the next shed, and beat again, and then continue on with the weaving in this manner.

If you have trouble with your selvage threads breaking, then I would suggest the use of a temple or stretcher. If you note that there are no broken selvage threads, then do not use a temple.

TIE-UP DRAFT:

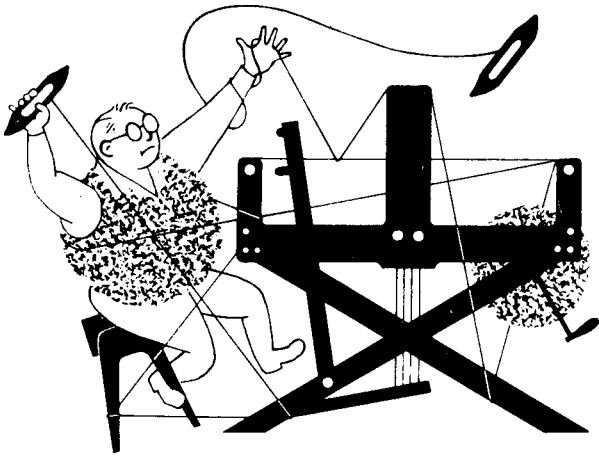
8		0		0		0		0	
7	0		0		0		0		
6		0		0		0		0	
5	0		0		0				0
4		0		0		0			
3	0		0				0		0
2		0		0		0		0	
1	0				0		0		0
		1		2		3		4	
		5		6		7		8	

TREADLING SEQUENCE:

Please note that there are 44 shots in one complete pattern repeat.

1. Treadle # 7, Light, Ocean Green
2. Treadle # 8, Dark, Forest Green
3. Treadle # 5, Light, Ocean Green
4. Treadle # 6, Dark, Forest Green
5. Treadle # 3, Light, Ocean Green
6. Treadle # 4, Dark, Forest Green
7. Treadle # 1, Light, Ocean Green
8. Treadle # 2, Dark, Forest Green
9. Treadle # 1, Light, Ocean Green
10. Treadle # 4, Dark, Forest Green
11. Treadle # 3, Light, Ocean Green
12. Treadle # 6, Dark, Forest Green
13. Treadle # 5, Light, Ocean Green
14. Treadle # 8, Dark, Forest Green
15. Treadle # 7, Light, Ocean Green
16. Treadle # 1, Dark, Forest Green
17. Treadle # 2, Light, Ocean Green
18. Treadle # 3, Dark, Forest Green
19. Treadle # 4, Light, Ocean Green
20. Treadle # 5, Dark, Forest Green
21. Treadle # 6, Light, Ocean Green
22. Treadle # 7, Dark, Forest Green
23. Treadle # 8, Light, Ocean Green
24. Treadle # 7, Dark, Forest Green
25. Treadle # 6, Light, Ocean Green
26. Treadle # 5, Dark, Forest Green
27. Treadle # 4, Light, Ocean Green
28. Treadle # 3, Dark, Forest Green
29. Treadle # 2, Light, Ocean Green
30. Treadle # 1, Dark, Forest Green
31. Treadle # 2, Light, Ocean Green
32. Treadle # 3, Dark, Forest Green
33. Treadle # 4, Light, Ocean Green
34. Treadle # 5, Dark, Forest Green
35. Treadle # 6, Light, Ocean Green
36. Treadle # 7, Dark, Forest Green
37. Treadle # 3, Light, Ocean Green
38. Treadle # 7, Dark, Forest Green
39. Treadle # 6, Light, Ocean Green
40. Treadle # 5, Dark, Forest Green
41. Treadle # 4, Light, Ocean Green
42. Treadle # 3, Dark, Forest Green
43. Treadle # 2, Light, Ocean Green
44. Treadle # 1, Dark, Forest Green

END OF ONE COMPLETE PATTERN REPEAT. Repeat over and over as desired.



# drafts and designs

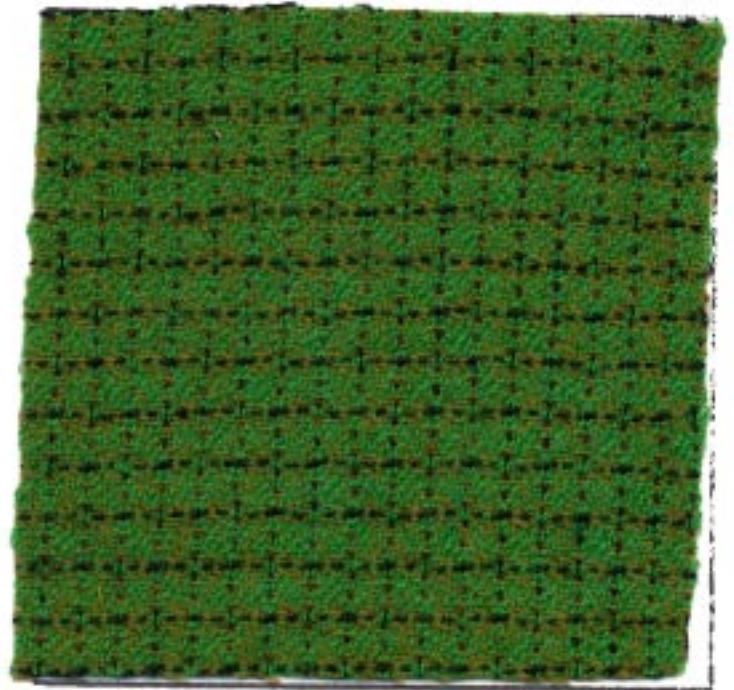


## *a guide for 5 to 12 harness weaves*

VOLUME 21, Number 3. NOVEMBER, 1978

### GREEN GRASS OF SUMMER:

Our sample this month, is a very fine worsted fabric, woven with 2/36's worsteds, on an 11 harness point twill. It was planned for suiting, light weight dress material, or for skirt yardage.



### TIE-UP DRAFT:

11	0			0		0		0	0		
10		0	0			0			0	0	
9		0		0	0		0			0	
8	0		0	0		0	0		0		
7			0		0	0		0		0	
6	0			0	0		0	0		0	
5		0		0		0	0		0		
4			0		0	0		0	0	0	
3	0			0			0	0		0	
2	0	0			0				0	0	
1		0	0			0		0		0	
	1	2	3	4	5	6	7	8	9	10	11

### KEY TO COLORS IN THE WARP:

- X -- Black, 2/36 Worsted
- 0 -- Grass, 2/36 Worsted

### THREADING DRAFT:

11					X						X
10			0	0					0	0	
9			0		0				0		0
8			0			0			0		0
7			0				0			0	0
6			0				0			0	0
5			0				0			0	0
4			0				0			0	0
3			0				0			0	0
2			0				0			0	0
1							X				X

DRAFTS AND DESIGNS:

Published monthly (except July and August,) by Robin & Russ Handweavers, 533 North Adams Street, McMinnville, Oregon 97128. SUBSCRIPTIONS: \$8.00 per year. Back issues or single copies 85¢ each, plus 15¢ postage. Yearly subscriptions start with the September issue. If you subscribe after September, back issues from then on will be mailed to you, unless you specify that you want your subscription to start with the next September issue.

VOLUME 21, NUMBER 3, November, 1978.

TREADLING SEQUENCE:

Please note that there are 20 shots in each treadle sequence or pattern repeat. Here is the treadling.

1. Treadle # 1, Black 2/36 Worsted
2. Treadle # 2, Olive 2/36 Worsted
3. Treadle # 3, Olive 2/36 Worsted
4. Treadle # 4, Olive 2/36 Worsted
5. Treadle # 5, Olive 2/36 Worsted
6. Treadle # 6, Olive 2/36 Worsted
7. Treadle # 7, Olive 2/36 Worsted
8. Treadle # 8, Olive 2/36 Worsted
9. Treadle # 9, Olive 2/36 Worsted
10. Treadle #10, Olive 2/36 Worsted
11. Treadle #11, Black 2/36 Worsted
12. Treadle #10, Olive 2/36 Worsted
13. Treadle # 9, Olive 2/36 Worsted
14. Treadle # 8, Olive 2/36 Worsted
15. Treadle # 7, Olive 2/36 Worsted
16. Treadle # 6, Olive 2/36 Worsted
17. Treadle # 5, Olive 2/36 Worsted
18. Treadle # 4, Olive 2/36 Worsted
19. Treadle # 3, Olive 2/36 Worsted
20. Treadle # 2, Olive 2/36 Worsted

End of one complete pattern repeat. Do repeat over and over as desired. And on your last repeat, to balance the pattern, end with a treadle # 1, with 2/36 Worsted, Black, to balance the pattern.

WARP:

Our warp is a very high quality and very fine 2/36's worsted yarn in two colors. The colors are Grass Green and also Black.

WEFT:

There are two threads used in the warp, and it is the same quality thread in the weft that is in the warp, a Cotany quality 2/36's worsted in two colors.. The colors are Black, and also Olive.

REED USED:

A 20 dent reed was used, and it was sleyed 2 ends per dent, or 40 ends per inch.

MORE ABOUT THIS FABRIC:

I'm somewhat disappointed with this fabric, as the pattern does not show up as I had hoped that it would. However, the hand (softness and feeling) of this fabric is so outstanding that we will go ahead and use the sample.

Also, we have washed and pressed this fabric, to try and bring it a little closer together and to make the pattern show a little better. You want to wash in luke-warm water, rinse thoroughly, allow to drip dry, and then steam press the fabric.

In the weaving of this fabric, we had some problems. The yarn is so fine, it is fragile. We had quite a few broken threads on harnesses # 2 and harness # 10. I suppose this is due to the construction of this weave. The threads would break on harness 2 or 10, where they were next to a black thread on # 1 and # 11. The green and the black thread would cling together, and when you would open the next shed, then a thread on # 2 or # 10 harness would snap. After finally learning how to handle this, we proceeded with the weaving without too much trouble.

We did use a fairly firm, double beat, with the warp thread a little on the slack side.

This pattern is extremely pretty if you have more of a contrast of colors. Do try it. You seem to have a circle with a star in it.

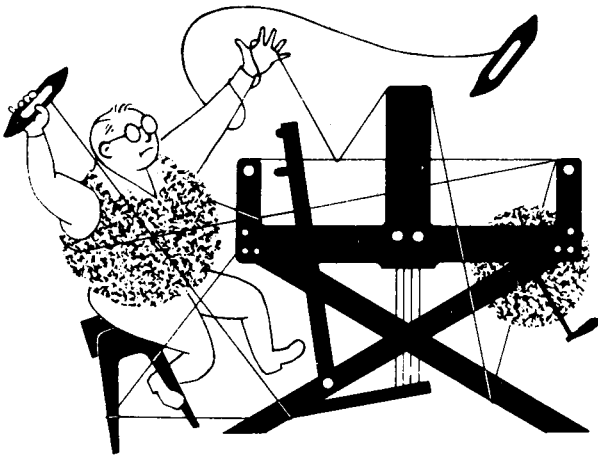
This pattern is from the Cesner and Dale book entitled "A HANDBOOK OF WEAVES." It is pattern # 665.

COST OF THE THREAD AND FABRIC:

We received such a good price on this worsted that we purchased it because of this. We are selling just these 3 colors at \$6.00 per lb., and we have a slightly coarser thread, size 2/32's which sells for \$16.00 per lb. We are discontinuing the 2/32's as there just is not enough call for this fine worsted.

In this fabric, in the 13 yard warp, we used 2 lbs. 1 oz. of warp thread, so the warp cost for 13 yards was \$12.38. Thus, the warp cost per yard was .96¢. In the weft, we used 2 lbs. 6 oz. of thread, in 11-3/4 yards. So, the total weft cost was \$14.25. This makes the cost per yard for the weft \$1.22 per yd

WARP COST PER YARD, 40" wide	¢ .96
WEFT COST PER YARD -----	1.22
<hr/>	
FABRIC COST PER YARD-----	\$ 2.18



# drafts and designs



## *a guide for 5 to 12 harness weaves*

VOLUME 21, Number 4. DECEMBER, 1978

### PERFECT CIRCLE WEAVING RINGS.

This is a most fascinating six (6) harness shadow weave that has given us almost a perfect circle in the weaving. This is woven in black and white, and would be striking in many different color combinations. And, perhaps some of you will recognize the take-off of the name of this pattern.

### WARP:

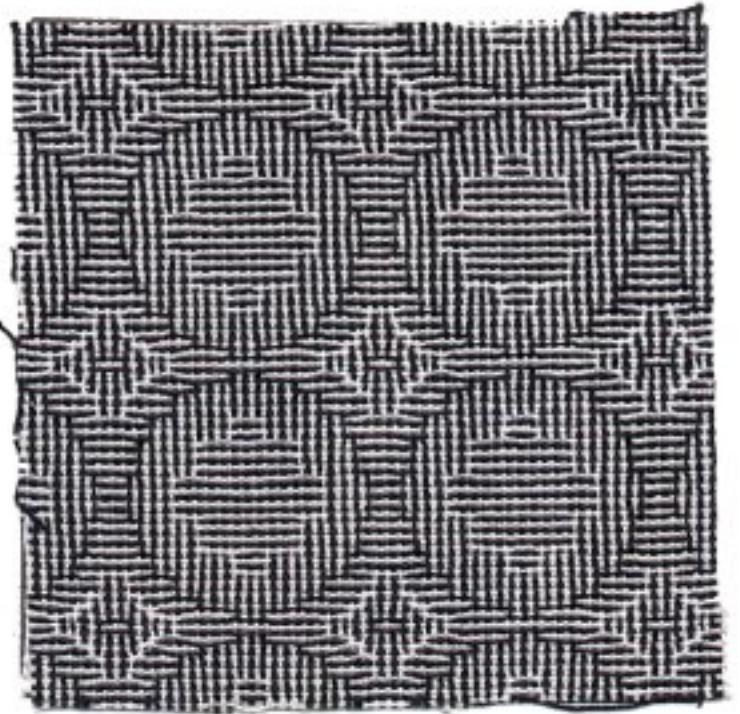
There are 2 threads used in the warp. They are a 20/2 White Super Sackel Cotton, and a 20/2 Black Super Sackel Cotton. The X is the black and the O is the white.

### WEFT:

The same two threads that are used in the Warp, are also used in the weft.

### REED USED:

We used a 15 dent reed, and double-sleyed it, 2 ends per dent, or 30 threads per inch.



### THREADING DRAFT:

6	X	X			0	0			X	X	X			0	0
5	0	0	0			X	X			0	0			X	X
4				0				X	X	X			X	X	X
3				X				0	0	0			0	0	0
2			0			X	X							X	X
1		X			0	0							0	0	X

### KEY TO COLORS IN THE WARP:

X -- 20/2 S.S. Cotton, Black  
O -- 20/2 S.S. Cotton, White

### WIDTH AND LENGTH OF WARP:

Our warp was set-up on the loom, 40" wide, and it wove down to 38" wide when off the loom.

COST OF THE FABRIC:

Our warp was 40" wide, and sett at 30 per inch, and the 13 yard warp tool a total of 1 lb. 14 oz. of 20/2 SS cotton warp, at \$10.00 per lb., so our warp cost was \$18.75, or the cost per yard was \$1.44 per yard.

It took approximately the same amount of thread for the weft, so the weft cost was \$1.44 per yard.

WARP COST PER YARD, 40" WIDE --- \$ 1.44

WEFT COST P.R YARD----- 1.44

FABRIC COST PER YARD----- \$ 2.88

TREADLING SEQUENCE:

Please note that there are 46 shots in each complete pattern repeat. Here is the treadling sequence.

1. Treadle # 1, Black 20/2 SS
2. Treadle # 2, White 20/2 SS
3. Treadle # 1, Black 20/2 SS
4. Treadle # 2, White 20/2 SS
5. Treadle # 1, Black 20/2 SS
6. Treadle # 2, White 20/2 SS
7. Treadle # 3, Black 20/2 SS
8. Treadle # 4, White 20/2 SS
9. Treadle # 3, Black 20/2 SS
10. Treadle # 4, White 20/2 SS
11. Treadle # 3, Black 20/2 SS
12. Treadle # 4, White 20/2 SS
13. Treadle # 5, Black 20/2 SS
14. Treadle # 6, White 20/2 SS
15. Treadle # 5, Black 20/2 SS
16. Treadle # 6, White 20/2 SS
17. Treadle # 2, Black 20/2 SS
18. Treadle # 1, White 20/2 SS
19. Treadle # 2, Black 20/2 SS
20. Treadle # 1, White 20/2 SS
21. Treadle # 4, Black 20/2 SS
22. Treadle # 3, White 20/2 SS
23. Treadle # 6, Black 20/2 SS
24. Treadle # 5, White 20/2 SS
25. Treadle # 1, Black 20/2 SS
26. Treadle # 2, White 20/2 SS
27. Treadle # 1, Black 20/2 SS
28. Treadle # 5, White 20/2 SS
29. Treadle # 6, Black 20/2 SS
30. Treadle # 3, White 20/2 SS
31. Treadle # 4, Black 20/2 SS
32. Treadle # 1, White 20/2 SS
33. Treadle # 2, Black 20/2 SS
34. Treadle # 1, White 20/2 SS
35. Treadle # 2, Black 20/2 SS
36. Treadle # 6, White 20/2 SS
37. Treadle # 5, Black 20/2 SS
38. Treadle # 6, White 20/2 SS
39. Treadle # 5, Black 20/2 SS
40. Treadle # 4, White 20/2 SS
41. Treadle # 3, Black 20/2 SS
42. Treadle # 4, White 20/2 SS
43. Treadle # 3, Black 20/2 SS
44. Treadle # 4, White 20/2 SS
45. Treadle # 3, Black 20/2 SS
46. Treadle # 2, White 20/2 SS

End of one complete pattern repeat. Do repeat over and over as desired.

DRAFTS AND DESIGNS:

Published monthly (except July and August,) by Robin & Russ Handweavers, 533 North Adams Street, McMinnville, Oregon 97128.

SUBSCRIPTIONS: \$8.00 per year. Back issues or single copies 85¢ each, plus 15¢ postage. Yearly subscriptions start with the September issue. If you subscribe after September, back issues from then on will be mailed to you, unless you specify that you want your subscription to start with the next September issue.

VOLUME 21, Number 4. DECEMBER, 1978

TIE-UP DRAFT:

6		0	0	0		
5	0	0	0			
4		0	0	0		
3	0	0			0	
2		0	0		0	
1	0			0	0	
	1	2	3	4	5	6

MORE ABOUT THE PATTERN:

In this pattern, there are 46 shots of pattern. After weaves like this have been done several times, it is very easy to memorize the treadling, and to weave it over and over, even without checking the treadling sequence.

This pattern is one of the shadow weaves from Marion Powell's Shadow Weave Book which we published, entitled "1,000 + PATTERNS IN 4, 6, and 8 HARNESS SHADOW WEAVES. This is 6-14-7. It is a 6 harness weave, is the 14th pattern, and this is the 7th treadling sequence for that pattern.

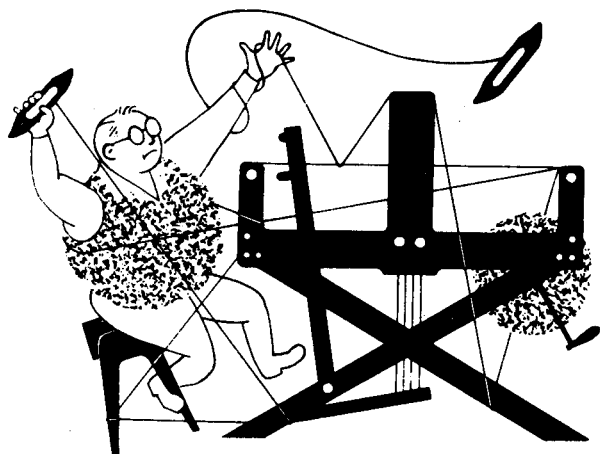
I think it is important that you always use a firm, even, double beat with this fine thread. And it is important that you open the shed, beat, throw the shuttle, change to the next shed, and then beat again.

This pattern would be so spectacular in so many different threads, and in different color combinations. It is most rewarding to weave, this type of pattern, and you can change the treadling on this pattern and get so many different interesting variations, that it is fun to experiment with it.

MORE ABOUT THE THREADS USED:

The 20/2 Super Sackel cotton is a top quality cotton, and is mercerized and also gassed to give a smooth, even thread. It is available on 1/2 lb. tubes, is available in about 90 plus colors, and is priced at \$10.00 per lb., or \$5.00 per 1/2 lb. tube.





# drafts and designs



## *a guide for 5 to 12 harness weaves*

VOLUME 21, Number 5, JANUARY, 1979

### SNOW DOTTED FURROWS:

This sample was inspired by some of the ideas in Harriet Tidball's monograph, *THE DOUBLE WEAVES*. This interesting 6 harness weave does resemble the furrows in the fields below our new home, dotted with the two snows we have had this winter.

### THREADING DRAFT:

6		S			S	
5			S			S
4			X	X	X	X
3		X	X	X	X	X
2	0	0				
1	0					

### KEY TO COLORS IN THE WARP:

- O-- Color # 26, Light Yellow 2/18's
- X-- Color # 22, Khaki Drab 2/18's
- S-- Scottish Heather, 3 ply, Charcoal

### WARP THREADS USED:

As noted above in the key to colors in the warp, we had 2 colors of 2/18's worsted yarn, color # 22, Khaki Drab; and color # 26, Light Yellow. The third thread is a 3 ply charcoal, scottish heather yarn, that we had 3 plied in Scotland.



### WEFT USED:

We used 3 different threads in the weft. They are as follows:

- A -- a blend of Trevira and Angora from England.
- B -- a blended yarn, 2 ply, called Chunky Buttermilk # 3, a blend of tussah silk and viscose.
- C -- a 3 ply natural douppioni silk.

DRAFTS AND DESIGNS:

Published monthly (except July and August,) by Robin & Russ Handweavers, 533 North Adams Street, McMinnville, Oregon 97128.

SUBSCRIPTIONS: \$8.00 per year. Back issues or single copies 85¢ each, plus 15¢ postage. Yearly subscriptions start with the September issue. If you subscribe after September, back issues from then on will be mailed to you, unless you specify that you want your subscription to start with the next September issue.

VOLUME 21, Number 5, January, 1979

REED USED:

An 8 dent reed was used, with a special sleying used. We had 3 ends of 2/18's in one dent, a single end of charcoal heather in the next dent, and this was repeated over and over.

TREADLING SEQUENCE:

There are 16 shots in each complete pattern repeat. Here is the sequence.

1. Treadle # 2 - Trevira & Angora
  2. Treadle # 1 - Trevira & Angora
  3. Treadle # 2 - Trevira & Angora
  4. Treadle # 6 - Chunky Buttermilk # 3.
  5. Treadle # 3 - 3 ply douppioni silk
  6. Treadle # 4 - 3 ply douppioni silk
  7. Treadle # 3 - 3 ply douppioni silk
  8. Treadle # 5 - Chunky Buttermilk # 3.
  9. Treadle # 4 - 3 ply douppioni silk
  10. Treadle # 3 - 3 ply douppioni silk
  11. Treadle # 4 - 3 ply douppioni silk
  12. Treadle # 6 - Chunky Buttermilk # 3.
  13. Treadle # 3 - 3 ply douppioni silk
  14. Treadle # 4 - 3 ply douppioni silk
  15. Treadle # 3 - 3 ply douppioni silk
  16. Treadle # 5 - Chunky Buttermilk # 3.
- END OF ONE COMPLETE PATTERN REPEAT. Do repeat over and over as desired.

TIE-UP DRAFT:

6	0	0			0	
5	0	0		0		
4		0	0	0		
3	0	0	0	0		
2		0	0	0		
1	0	0	0	0		
	1	2	3	4	5	6

MORE ABOUT THIS FABRIC:

When experimenting with these 6 harness weaves this past year, we were intrigued with the surface effects we were obtaining, so we decided to do one, so that you can see what is happening on the surface of the fabric, and how you can make

heavy novelty yarns work on surface designs.

There were a few problems in the weaving of this sample. In the weft, one of our threads we used was a trevira and angora combination yarn from England. We found that it tended to twist back on itself, unless you put a draw or drag in the shuttle to keep the bobbin from unwinding and allowing this yarn to twist on itself.

What we did was to take a piece of tissue paper and wrinkle it up and put it in the boat shuttle. Thus, when the bobbin drags on the tissue paper, it stops it from unwinding, and thus eliminates this problem. We use this technique on many yarns in the shuttle. Particularly, it is very effective on stiff and wiry linen.

COST OF THE THREADS USED:

The 2/18's worsteds come on 1/2 lb. tubes. There are 39 colors available. It has 4800 yards per lb., and is \$12.00 per lb.

The charcoal 3 ply scottish heather is available on about 2 lbs. cones, and it is \$4.80 per lb.

The 2 ply Chunky Buttermilks # 3 is a blend of tussah silk and viscose rayon. It is available in either single ply or in two ply. The two ply is \$7.60 per lb., and the single ply is \$6.80 per lb.

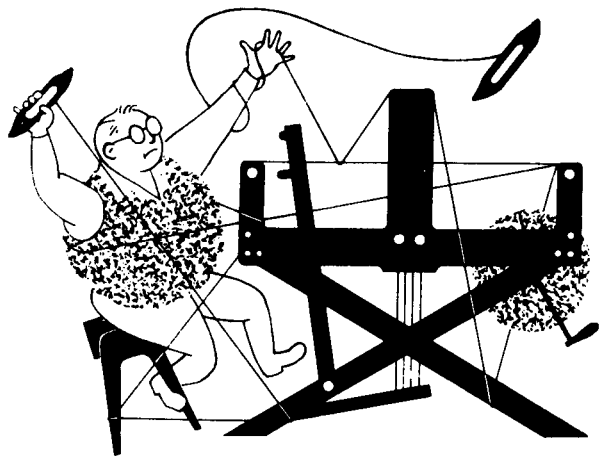
The 3 ply douppioni silk in natural is on about 1 lb. cones, and is \$8.00 a lb.

COST OF THE FABRIC:

We did a 15 yard warp, 40" wide for this sample. We received about 13½ yards of finished fabric. It took 6 lbs. of 3 ply charcoal scottish heather, 1 lb. 3 oz. of 2/18's Khaki Drab, and 6 oz. of 2/18's Light Yellow. The total warp cost was \$47.93 or the cost per yard for warp was \$3.20 per yard.

In the 13½ yards of weft, we used 10 oz. of Trevira & Angora, 8 lbs. 11 oz. of Chunky Buttermilk # 3, and 2 lbs. 12 oz. of the 3 ply douppioni silk. Our weft cost was \$93.04, or the cost per yard was \$6.90 for the weft.

WARP COST PER YARD, 40" wide	\$3.20
WEFT COST PER YARD,-----	6.90
FABRIC COST PER YARD-----	\$10.10



# drafts and designs

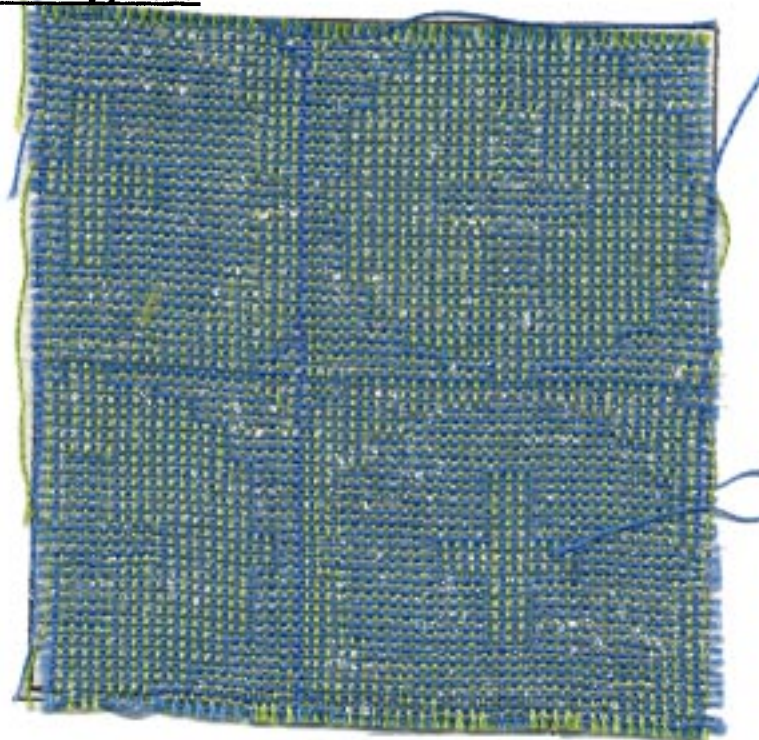


## *a guide for 5 to 12 harness weaves*

VOLUME 21, Number 6, February, 1979

### GLACIER ICE:

The glaciers I have seen tend to have a blue-green cast, with the shiny ice making it sparkle. You can see all this in the blue, green, and clear white metallic boucle used in this 8 harness shadow weave. According to Marion Powell, this is an opposites development on a shadow weave.



### TIE-UP DRAFT:

8		0	0	0	0	0		
7	0		0		0		0	
6		0		0		0	0	
5	0		0		0		0	
4		0		0		0		
3	0		0		0		0	
2		0		0		0		
1	0		0		0		0	
	1	2	3	4	5	6	7	8

### THREADING DRAFT:

R			X X			O O O			X X
7			O O			X X X X			O O
6	O		X X			O O O O		O O O O	X X
5	X		O O			X X X X		X X X X	O O
4	O	X			O O O			O O O	X
3	X	O			X X X			X X X	O
2		O X			O O O			O O O	X
1		X O			X X X			X X X	O

Start

8			O O			X X X X			O O
7			X X			O O O			X X
6			O O			X X X X		X X X X	O
5			X X			O O O O		O O O O	X
4			O			X X X		X X X	
3			X			O O O		O O O	
2			O			X X X		X X X	
1	X					O O O		O O O	

End

DRAFTS AND DESIGNS:

Published monthly (except July and August,) by Robin & Kuss Handweavers, 533 North Adams Street, McMinnville, Oregon 97128. SUBSCRIPTIONS: \$8.00 per year. Back issues or single copies 85¢ each, plus 15¢ postage. Yearly subscriptions start with the September issue. If you subscribe after September, back issues from then on will be mailed to you, unless you specify that you want your subscription to start with the next September issue.

VOLUME 21, Number 6, February, 1979

WARP:

Two colors of the Egyptian cotton, size 20/2 are used in the warp. They are:  
X-- 20/2 S.S., color 77, Field Blue  
O-- 20/2 S.S., color 42, Avocado

WEFT:

Two threads are used in the weft. One is the same Field Blue, color # 77, as was used in the warp. The other weft thread is a clear-white fine LUMINEX BOUCLE, or SHIMMERETTE, which is a lurex metallic boucle called Jack-Frost White.

REED USED:

We used a 15 dent reed, 2 ends per dent or 30 threads per inch.

TREADLING SEQUENCE:

Please note that there are 122 shots in each pattern repeat. Also, note that the underlined thread is the 20/2 S.S., Field Blue, and the thread that is not underlined is the Jack-Frost White metallic luminex. I will just type out the treadling in lines from left to right, as it would be too long to write out each one individually, and give the color after the treadle. here goes:

8,7,8,5,6,3,4,3,4,1,2,1,2,1,2,8,7,8,7,  
8,7,8,7,8,7,8,7,6,5,6,5,6,5,6,7,8,7,8,  
7,8,7,8,7,8,7,8,2,1,2,1,2,1,4,3,4,3,6,  
5,8,7,8,7,8,7,6,5,4,3,4,3,2,1,2,1,2,1,  
7,8,7,8,7,8,7,8,7,8,5,6,5,6,5,6,5,  
8,7,8,7,8,7,8,7,8,7,1,2,1,2,1,2,3,  
4,3,4,5,6,7,8,7.

Yes, there are 122 shots in each complete pattern repeat. Repeat over and over as desired. Also, be sure to note that there are two places, where you will have 2 of the Field Blue threads together. They are the first and last thread of the pattern, and in the 4th row across, the 4th and 5th threads in the treadling sequence above.

These are essential to make the pattern turn out as our sample.

COST OF THE THREADS USED AND THE SAMPLE

The 20/2 S.S. cotton comes in about 95 colors, is on 1/2 lb. cones, and is \$5.00 per cone. The luminex metallic, when you buy it as a regular stock item from the manufacturers in England costs \$35.00 per lb. wholesale, so with shipping and duty it sells for about \$64.00 per lb. However, we occasionally are able to purchase odd lots in England, and this is one of them, used in the sample and this Jack-Frost-White, if sold by the cone of about 1 lb. 8 oz. each is \$24.00 per lb. In smaller amounts, we wind it off onto 500 yard tubes, and have it available at \$1.95 per tube. There is about an oz. per tube I think.

Our warp cost is as follows. We used 1 lb. 2 oz. of Field Blue and 1 lb. 1 1/2 oz. of Avocado in the warp. At 10.00 per pound, our 14 yard warp, 40" wide cost \$22.20, or the cost per yard was \$1.59.

In the weft, we used 1 lb. 1-1/2 oz. of Field Blue, and we used 10 oz. of the Jack-Frost-White Luminex. The S.S. Cotton was 10.95, and the 10 oz. of the Luminex was \$19.50, so the total weft cost was \$30.45 for 12 yards 24" of finished fabric. Thus the weft cost per yard was \$2.40 per yard.

WARP COST PER YARD, 40" WIDE-- \$1.59  
WEFT COST PER YARD----- 2.40

FABRIC COST PER YARD was \$ 3.99

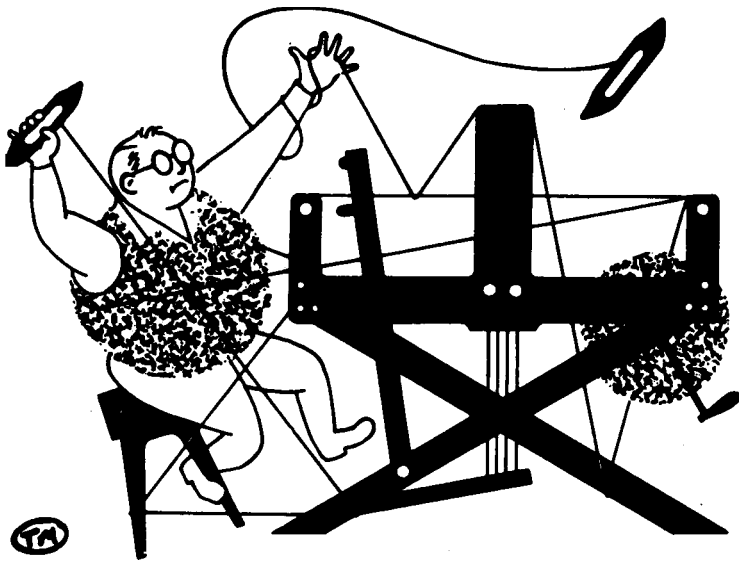
MORE ABOUT THE FABRIC:

While this one looks quite complicated and involved, it is actually quite easy to weave. In our entire 14 yard warp, we did not have one broken warp thread.

Also, on this pattern, it is EXTREMELY IMPORTANT, that you have a contrast in colors in the 2 warp and the 2 weft threads. We wove a 14 yard warp of this first in 2 shades of pink, and they were so close that you could not see the pattern. Thus, we did it completely over, and the results are much more outstanding.

And, the metallic is non-tarnishable and washable, so you have no problems there. Incidentally, as it is a metallic boucle, it is a little scratchy on the surface, and there is no way you can eliminate this

And once again, I like to emphasize that a good, firm, even, double beat is most successful in the weaving of this fabric. As the metallic is a boucle, it has to be beaten in a little tighter than most threads.



# drafts and designs

*a guide for 5 to 12 harness weaves*

VOLUME 21, Number 7, March, 1979

DIAMOND BLUE:

This blend of cotton, rayon and metallic is a most interesting 8 harness pattern with much to look at in the way of modern design.

WARP:

There are two threads used in the warp. They are a 4/2 spun rayon with the color name of Terrific Turquoise, and a 20/3 cotton with the name Ocean Swells.

WEFT:

There are two different threads used in the weft in this fabric. First, there is a 3/2 spun rayon thread called Spring Grass. And secondly, a nylon supported metallic thread called Dawn Blue.

REED USED:

A 10 dent reed was used, and it was double sleyed, 2 ends per dent or 20 threads per inch.



THREADING DRAFT:

8	0		X	0	X	0	X
7	X		0	X	OX		0
6	0		X	0	X	0	X
5	X		0	X	0	X	0
4		0	X	0	X	0	X
3		X	0	X	0	X	0
2			OX	0	X	0	X
1		X	0	X	0	X	0

TIE-UP DRAFT:

8		0	0	0	0		0	
7	0	0	0	0	0			
6		0	0	0	0			
5	0	0	0	0			0	
4		0	0	0	0			
3	0	0		0	0			
2		0	0	0	0			
1	0	0	0	0	0		0	
	1	2	3	4	5	6	7	8

KEY TO COLORS IN THE WARP:

- X -- TERRIFIC TURQUOISE 4/2 SPUN RAYON
- 0 -- OCEAN SWELLS, 20/3 MERC. COTTON

DRAFTS AND DESIGNS:

Published monthly (except July and August,) by Robin & Russ Handweavers, 533 North Adams St., McMinnville, Oregon 97128.

SUBSCRIPTIONS: \$8.00 per year. Back issues or single copies 85¢ each, plus 15¢ postage. Yearly subscriptions start with the September issue. If you subscribe after September, back issues from then on will be mailed to you, unless you specify that you want to start with the next September issue.

VOLUME 21, Number 7, March, 1979

WIDTH AND LENGTH OF WARP, AND AMOUNT OF FINISHED FABRIC.

We did a 14 yard warp, 40" wide on the loom. From this we received 12-1/2 yards of finished fabric, 38-1/2" wide.

TREADLING SEQUENCE:

I'll mention that the treadling is exactly the same as the threading. If you can memorize the treadling, it is very easy to weave. There are 48 shots in one complete pattern repeat. Rather than list the sequence of 1 to 48, I'll give the numerical sequence of the treadling, and underline the threads that are the 3/2 Spun Grass, Spun Rayon. The threads that are not underlined, are the 1/64" Supported Dawn Blue Metallic. Here is the treadling sequence:

1, 2, 3, 4, 5, 6, 7, 8, 2, 1, 4, 3, 6, 5,  
8, 7, 7, 8, 5, 6, 3, 4, 1, 2, 8, 7, 6, 5,  
4, 3, 2, 1, 7, 8, 5, 6, 3, 4, 1, 2, 2, 1,  
4, 3, 6, 5, 8, 7.

End of one complete pattern repeat. Repeat over and over as desired. And of course, you read this sequence from left to right, across the first row, the second row, the third row, and then the fourth row.

MORE ABOUT THE FABRIC:

This is an extremely easy fabric to weave. Memorize the threading or treadling and then proceed.

We found that a firm, even double beat gave us the best results.

After two or three repeats of weaving this pattern, it should be no problem to memorize the sequence.

Another nice thing about the weaving is that in the entire piece of yardage, we did not have one broken warp thread.

And, I myself wanted to continue to do some experimenting with different color and different weights of threads, but we ran out of warp with our three yard sampler before we wove the big piece.

COST OF THE THREADS USED:

The supported 1/64" Dawn Blue metallic comes on 1/2 lb. tubes, and is \$4.00 a tube.

The 3/2 Spring Grass Spun Rayon comes on 1-1/4 lb. tubes, and it is \$3.20 per lb. We have only about 40 lbs. of this.

And, our 20/3 Mercerized Cotton, color Ocean Swells is the only one we have of this size. It is on cones of about one pound

pound to one pound four ounces in weight. It is priced at \$4.00 per lb. while it lasts. And the last of the four threads used was the 4/2 Terrific Turquoise Spun Rayon. It came on about 2 lb. 4 oz. cones, and it too, is \$3.20 per lb.

COST OF THE FABRIC:

In our warp, we used 15 oz. of the 20/3 cotton, and 3 lbs. 14 oz. of the 4/2 spun rayon. Thus, the total cost for 14 yard warp, 40" wide, was \$16.15, or the cost per yard was \$1.16 per yard.

In the weft of 12-1/2 yards of finished fabric, we used 3 lbs. 1 oz. of the 3/2 spun rayon, and we used 5 oz. of the dawn blue metallic. Thus our total weft cost was \$12.30. So the weft cost per yard was 99¢ per yard.

WARP COST PER YARD----- \$ 1.16  
WEFT COST PER YARD----- .99

FABRIC COST PER YARD----- \$ 2.15

TWO, ONE WEEK WORKSHOPS THIS SUMMER WITH

Malin Selander  
One of Sweden's leading weavers

The First two weeks in July are the times she will teach her class on "SWEDISH TRANSPARENCIES." If you are interested in further details, write immediately to ROBIN & RUSS HANDWEAVERS, 533 North Adams St., McMinnville, Oregon 97128.



DRAFTS AND DESIGNS:

Published monthly (except July and August,) by Robin & Russ Handweavers, 533 North Adams St., McMinnville, Oregon 97128.

SUBSCRIPTIONS: \$8.00 per year. Back issues or single copies 85¢ each, plus 15¢ postage. Yearly subscriptions start with the September issue. If you subscribe after September, back issues from then on will be mailed to you, unless you specify that you want to start with the next September issue.

VOLUME 21, Number 8, April, 1979

SOURCE OF IDEA FOR THIS SAMPLE:

The idea for this sample came from the bulletin of the Contemporary Handweavers of Texas. In one issue, they explained draw-downs, and this was the pattern that they used in the draw-down. I saw the sample of the pattern, was interested, and set-up a sample warp on the loom, and this is the result.

WIDTH OF WARP, AND LENGTH OF WARP, AND LENGTH OF FINISHED FABRIC.

We did a 15 yard warp, 40" wide on the loom. Off the loom and relaxed, the fabric is 37-1/2" wide. And from the 15 yards of warp, we received 13-3/4 yards of finished fabric. I might mention that this was measured while being woven and it was 14 yards 13" long on the loom and under tension. Off the loom, and relaxed, this fabric comes down to 13 yards and 27" in length, so you can get an idea of what happens when the tension is released on a fabric just off the loom.

TREADLING SEQUENCE:

There are 56 shots in one complete pattern repeat, and I could write this the long way, or make it easier on myself, and I'll write it the short way.

Treadle as follows.

1,2,3,4,5,6,7,8,1,2,3,4,5,6,7,8,5,6,7,8,5,6,7,8,5,6,7,8,5,6,7,8,1,2,3,4,1,2,3,4,1,2,3,4,1,2,3,4,1,2,3,4, and then start over again at the beginning.

In other words, you treadle 1 to 8, two times, then 5 to 8 a total of 5 times, and 1 to 4 a total of 5 times for 56 shots.

COST OF THE THREADS USED:

The 6/2 spun rayon is available on tubes about 2-1/2 to 2-3/4 lbs. each.

And it has 2500 yards per lb., and the cost for these is \$3.20 per lb. A very, very, attractive price for good warp threads.

The 50% Shetland Wool, and 50% acrylic yarn has 2400 yards per lb., and it is priced at \$6.00 per lb. It too came on cones of about 2-1/2 lb. each.

It took slightly less than 2 lbs. of each of the 2 colors for the 15 yard warp, so it was \$12.80 for the 15 yard warp, or the cost per yard was 36¢ per yard.

In the weft, we used 4 lbs. 10 oz. of the Shetland and Acrylic blend yarn. This cost is \$6.00 per lb., so the total weft cost was \$27.75 or the cost per yard was \$2.02 per yard.

WARP COST PER YARD-----	.36
WEFT COST PER YARD-----	2.02
<u>FABRIC COST PER YARD-----</u>	<u>\$2.38</u>

Note that this is one of the lowest costing fabrics we've had for 8 or 10 months.

MORE ABOUT THIS FABRIC:

First, we feel it is important that you use a firm, even, double beat.

Secondly, we had no problems with the weaving of this fabric. Isn't that nice.

Third, we were pleased with the warp we used. Cottons have gone so high, we kept looking for a reasonably priced warp. I found this 6/2 tightly twisted rayon in just 2 colors, and I went overboard. I purchased 500 lbs. of each of the 2 colors. One is Jack O Lantern Orange, and the other is Celery Gold. The price of \$3.20 per lb. for this is very pleasing.

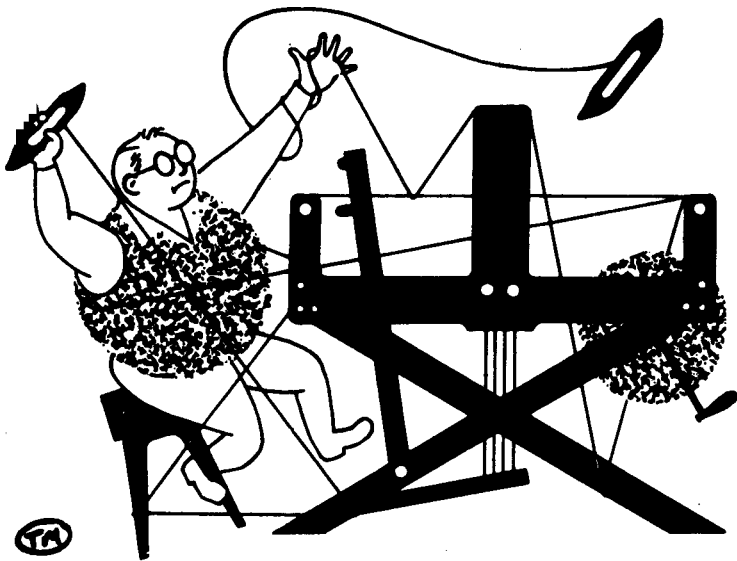
This fabric is very striking, on both sides, and I'd like to do more of the experimenting with this warp if possible.

Vacancies in the first week only of the workshop with Malin Selander.

The first week still has room for approximately 5 persons. The 2nd week is completely full.

July 2nd through July 6th, for this first week's workshop. Looms will be warped, and you bring yourself and your shuttles. For more details write to Robin & Russ Handweavers, 533 North Adams St., McMinnville, Oregon, 97128.





# drafts and designs

*a guide for 5 to 12 harness weaves*

VOLUME 21, Number 9. May, 1979.

WHITE CAMEO:

This most interesting 8 harness weave is a single huck weave, and makes a most delightful sample. As stoles and scarves are so popular right now, we thought you might like to use this weave in a scarf or stole.

WARP:

Our warp is a 2/32's worsted yarn, in natural white, which we have a limited amount of. It is from England.

WEFT:

We used the same thread for the weft as we used for the warp, the 2/32's worsted, in natural white.

REED USED:

We used a 20 dent reed with this yarn and double-sleyed it, 2 ends per dent or 40 ends per inch.

WIDTH AND LENGTH OF WARP:

We had a warp 40" wide, and 14 yards long. It woven in quite a bit, and after we washed and pressed it, it was 36" wide.

And, from the 14 yard warp, we received about 12-1/2 yards of finished fabric.

MORE ABOUT THIS FABRIC:

We had problems in the weaving of this sample, and want to tell you about them. First of all, this yarn is not a top quality yarn, even though it is a nice, fine one.



It is a sort of rough, slightly fuzzy yarn, and at 40 ends per inch, it tended to cling together. We beat it, two or three times, after the shed was changed, and finally, in desperation, we changed the tie-up completely, and the pattern then wove upside down, but it was quite a bit easier to weave. So, we will give you the tie-up that we had the least trouble with.

I think the whole thing is that this should have been woven at slightly less threads per inch, perhaps 36 or maybe even 32 ends per inch. If you'd do this, I do not think you would have the clinging that we had until we changed the tie-up.

**DRAFTS AND DESIGNS:**

Published monthly (except July and August,) by Robin & Russ Handweavers, 533 North Adams St., McMinville, Oregon 97128.

**SUBSCRIPTIONS:** \$8.00 per year. Back issues or single copies 85¢ each, plus 15¢ postage. Yearly subscriptions start with the September issue. If you subscribe after September, back issues from then on will be mailed to you, unless you specify that you want to start with the next September issue.

**VOLUME 21. Number 9. May, 1979.**

TIE-UP DRAFT:

8	0	0			0	0		0	0					
7			0	0				0		0				
6				0		0		0	0					
5	0				0		0				0			
4		0			0		0			0				
3	0		0		0	0		0		0		0		
2		0		0		0		0	0		0	0		
1	0		0		0		0		0				0	
	1	2	3	4	5	6	7	8	X	Y			9	10

THREADING DRAFT:

8																	
7							X										
6					X					X							
5						X											
4		X									X						
3																X	
2			X	X		X	X		X	X		X	X				
1	X	X		X	X		X	X		X	X		X	X			

start →      Selvage

TREADLING SEQUENCE:

There are 54shots in one complete pattern repeat and I'll give them in groups of 3 for greater convenience just below.

Treadle as follows:

- X,1,X,
- Y,2,Y,
- X,3,X,
- Y,4,Y,
- X,5,X,
- Y,4,Y,
- X,3,X,
- Y,2,Y,
- X,1,X,
- Y,6,Y,
- X,3,X,
- Y,2,Y,
- X,7,X,
- Y,8,Y,
- X,7,X,
- Y,2,Y,
- X,3,X,
- Y,6,Y,

This makes 54 shots in one complete pattern repeat. Repeat over and over as desired.

COST OF THE FABRIC:

At 40" wide, and 40 ends per inch, it took 3 lbs. 8½ oz. of warp thread. At \$8.00 per lb., that comes to \$28.25, or the warp cost is \$2.02 per yard. In the weft, we used

2 lbs. of yarn in the entire 12½ yards of finished fabric. So our weft cost was \$16.00, and thus the cost per yard comes to \$1.30 per yard.

WARP COST PER YARD ----- \$ 2.02  
WEFT COST PER YARD \*\*\*\*\* \$ 1.30

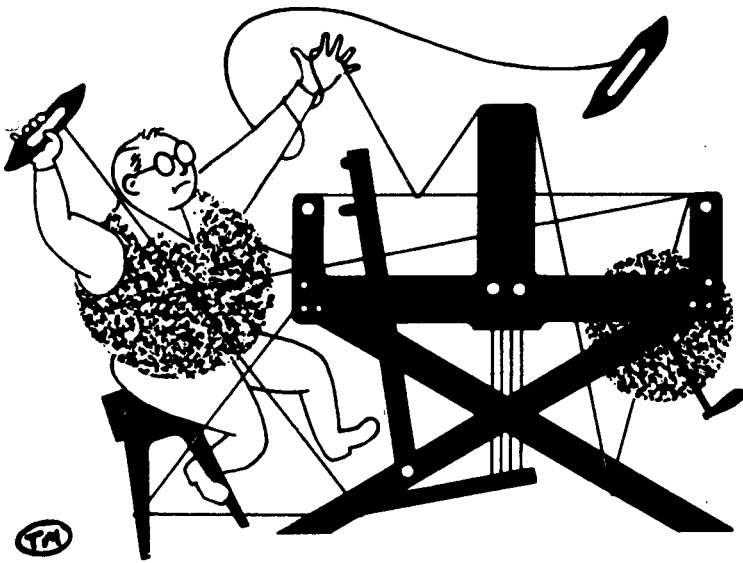
FABRIC COST OF THIS FABRIC. \$3.32 per yard is the total cost for both warp and weft.

COST OF THE THREADS USED:

We have 7 assorted colors in limited amounts in 2/32's or 2/36's worsted. The price is \$8.00 per lb. for all of the colors, while they last. They do come on all varying sized spools from 1/2 lb. to 1½ to 2 lb. cones. Amounts of these 7 colors are definitely limited. And, the regular price on the 2/32's when we had it in stock was \$16.00 per lb.

We kept the warp quite tight while weaving well, and this tends to keep it from beating in tightly. Perhaps if we had it at 36 ends per inch, it would have packed in a little better, and made more of a lace circle instead of an oval. And, as we had the warp quite tight this tends to keep the shed from opening so wide, and can sometimes cause problems.

After we changed the tie-up to the one that I have given you here, we had no more problems with the weaving.



# drafts and designs

*a guide for 5 to 12 harness weaves*

VOLUME 21, Number 10. June, 1979

LUCIDESCENT SHEEN:

Silk has a sheen different than almost anything else, and you see here how much sheen a spun silk can have. And, this type of weave, a basket weave with a plain weave allows more of this sheen to show, as you can see in this sample.

WARP:

Our warp is a 30/3 spun silk in a pale green.

WEFT:

Our weft on most of the fabric was the same color, but when we ran out of this color, we also used some light silver grey. So, you might have a solid color sample or a silver-grey-green sample.

REED USED:

A 15 dent reed was used, and it was double sleyed, 2 ends per dent, or 30 threads per inch.

THREADING DRAFT:

6	X	X	X	X	X	X	X	X
5	X	X	X	X	X	X	X	X
4			X	X	X	X	X	X
3		X	X	X	X	X	X	X
2		X	X	X	X	X	X	X
1		X	X	X	X	X	X	X



TIE-UP DRAFT:

6		0		0		0
5	0		0		0	
4			0	0		0
3			0	0	0	
2	0	0				0
1	0	0			0	
	1	2	3	4	5	6
				A	B	

### DRAFTS AND DESIGNS:

Published monthly (except July and August,) by Robin & Russ Handweavers, 533 North Adams St., McMinnville, Oregon 97128.

SUBSCRIPTIONS: \$8.00 per year. Back issues or single copies 85¢ each, plus 15¢ postage. Yearly subscriptions start with the September issue. If you subscribe after September, back issues from then on will be mailed to you, unless you specify that you want to start with the next September issue.

VOLUME 21, Number 10. June, 1979

### TREADLING SEQUENCE:

In our complete pattern repeat, we have 46 shots in one complete pattern repeat. Of these, the first 32 threads are for the basket weave portion of the pattern, and then the next 14 threads are for the plain weave between each open, lace block.

1. Treadle # 1, smooth spun silk
2. Treadle # 2, smooth spun silk
3. Treadle # 1, smooth spun silk
4. Treadle # 2, smooth spun silk
5. Treadle # 3, smooth spun silk
6. Treadle # 4, smooth spun silk
7. Treadle # 3, smooth spun silk
8. Treadle # 4, smooth spun silk

Repeat these first 8 threads over for 4 times or until you have 32 shots of pattern thread.

Then, continue with this treadling.

33. Treadle # 5, smooth spun silk
34. Treadle # 6, smooth spun silk

Then you repeat treadles # 33 and 34 over and over for 14 shots, all of them on the same 2 plain weave treadles, which are treadles #5 and # 6.

This will then make a total of 46 shots in one complete pattern repeat. Then you repeat over and over as desired.

### COST OF THE THREADS USED:

This spun silk is part of a large lot we purchased from Switzerland. We had quite a bit of some colors, and only a box of 10 spools of other colors. Price per 300 meter tube is \$1.75 for the 30/3.

The same thread was used for the weft, as was used for the warp. As we previously indicated, we have quite a few colors available, but limited quantities of these are available.

We do have many other sizes also, from 30/3 to 130/3.

### COST OF THE FABRIC:

We did a 15 yard warp, 40" wide on the loom, and it took 30 tubes of this 30/3 silk for warp. At \$1.75 per tube, so our total warp cost was \$52.50, and the warp cost per yard was \$3.50 per yard.

It took slightly less thread for the weft, and we used 26 spools in our 13-1/2 yards of finished fabric. So the total weft cost was \$45.50, or the cost per yard was \$3.38 per yard.

WARP COST PER YARD-----	\$3.50
WEFT COST PER YARD-----	3.38
FABRIC COST PER YARD-----	\$6.38

### MORE ABOUT THE FABRIC:

There is not much to tell about this fabric. The weaving was very easy, and there were no problems. We did try to balance the fabric, that is, get as many plain weave shots in between each pattern repeat as there were in the warp, but we just could not beat it tightly enough to do this, so, we just cut down the number of plain weave shots in between each pattern.

We did a sample out of 10/2 cotton for warp and weft, and it also gave us some nice results, and if silk is not available you could use cotton. I would think that this would be very striking in linen or ramie for place-mats also.

### WOULD YOU LIKE TO GO TO NEW ZEALAND AND AUSTRALIA ON A HAND\*WEAVING AND SPINNING TOUR.

We have been asked by the local travel bureau who handled our tour to England last year, if I would consider leading a tour to Australia and New Zealand in August of 1980.

So, at the end of my annual English tour this year, I'm going to New Zealand and Australia to see what yarns are available, and to scout prospective places to visit on a hand-weaving tour next summer.

So, if you think you might be interested in such a weaving tour, please do send us your name and address, and we will send you a brochure next year, in March or April, and give you more details and cost. At present, it is impossible to come up with a cost, and this will depend in part, upon my visit to Australia and to New Zealand in September.