

# drafts and designs

## *a guide for 5 to 12 harness weaves*

VOLUME 22, Number 1, September, 1979.

### BASKET WEAVE AND HUCK LACE

These two weaves are combined together in this most interesting eight harness weave. And it was an exciting fabric to design, and I can see many other possible variations other than the sample this month.

### WARP THREADS USED:

We used two different sizes and colors of worsted wool in the warp. We used an 18/2 worsted, color # 27, Monday Blue, and we used a 12/2 worsted, color # 12, Light Avocado as the other color in the warp.

### WEFT THREADS USED:

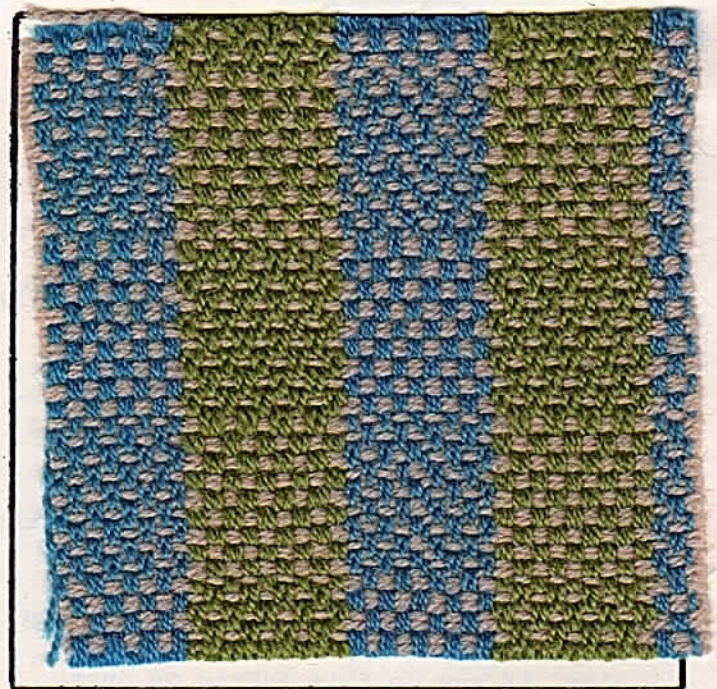
We just used one color of 2/12's worsted in the weft, and it was color # 18, Tempting Tan.

### REED USED:

We used a 15 dent reed, and double-sleyed, 2 ends per dent or 30 threads per inch in the warp, even though we had 2 different weights of warp thread.

### THREADING DRAFT:

8	0 0	0 0	0 0	0 0	0 0		
7	0	0	0	0			
6	0	0	0	0	0		
5	0 0	0 0	0 0	0 0	0 0		
4			X X	X X	X X	X X	
3			X	X	X	X	
2			X	X	X	X	X
1			X X	X X	X X	X X	X X



### TIE-UP DRAFT:

A.

8	0		0 0 0						
7		0 0 0 0							
6	0 0				0 0				
5	0 0				0 0				
4	0 0		0		0				
3	0 0				0 0				
2		0 0 0 0							
1		0 0	0 0						
		1	2	3	4	5	6	7	8



DRAFTS AND DESIGNS:

Published monthly (except July and August,) by Robin & Russ Handweavers, 533 North Adams Street, McMinnville, Oregon 97128.

SUBSCRIPTIONS: \$8.00 per year. Back issues or single copies at 85¢ each, plus 15¢ pp. Yearly subscriptions start with the September issue. If you subscribe after September, back issues from September on will be mailed to you, unless you specify that you want your subscription to start with the next September issue.

VOLUME 22, Number 1. September, 1979

B.

10		o		o		o		o		o		o		o	
9	o		o		o		o		o		o		o		o
8	o		o	o	o							o			
7		o	o	o	o							o			
6	o	o						o	o		o				
5	o	o						o	o	o					
4	o	o			o				o		o				
3	o	o						o	o	o					
2			o	o	o	o								o	
1			o	o	o	o								o	
	1	2	3	4	5	6	7	8	9	10					

MORE ABOUT THE FABRIC:

This was an exciting fabric to design. I started with completely different colors, and with the change of each color, the fabric changed appearance very drastically.

This pattern is an 8 harness weave, but you can change it to a 10 harness weave, by adding selvage threads on the harnesses # 9 and # 10, and changing the tie-up of your 8 harness pattern to the B-tie-up we have given, and this helps weave the fabric without any selvage problems.

There were really no problems in the weaving of this piece, and I felt it was a very easy fabric to do.

Also, if you do this fabric on just the 8 harnesses required, you can use this selvage threading. 1,5,2,6,3,7,4,8. Repeat this twice and it should make the weaving on the 2 selvage edges much easier.

SOURCE OF IDEA FOR THIS SAMPLE:

We were intrigued with a similar pattern that we found in the Southern California Handweavers Guild bulletin several months ago, so we decided to set-up the loom to that pattern with 6 different colors and experiment. The sample that you see is the result of this experiment.

KEY TO THREADS IN THE WARP:

O -- 2/18's Worsted, Monday Blue  
X -- 2/12's Worsted, Light Avocado

COST OF THE THREADS USED:

The 2/18's worsteds in the 39 colors, and the 2/12's worsteds in 22 colors all sell for \$12.00 per lb. Most of it does come to us on 1/2 lb. cones. The 2/18's has 5,000 yards per lb., and the 2/12's has 3300 yards per lb.

COST OF THE FABRIC:

In our 14 yard warp, it takes 1-3/5 lbs. of the 2/18's worsted and it takes 2-1/2 lbs. of the 2/12's worsted for this warp. At \$12.00 per lb., the total cost for the warp was \$49.20.

And, we forgot to keep track of the weft thread, so an estimate of the cost is that we used 4 lbs. of the 2/12's in the weft of 12-1/2 yards of finished fabric. This would bring the weft cost to \$48.00 for the 12.5 yards, or the cost per yard would be \$3.84 for the weft.

And, the warp cost was \$49.20 for 14 yards, so the cost per yard was \$3.52

WARP COST PER YARD, 40" wide	---	\$ 3.52
WEFT COST PER YARD	-----	3.84
+++++		
FABRIC COST PER YARD WAS *****		\$ 7.36

TREADLING SEQUENCE:

Please note that there are 54 shots in one complete pattern repeat. I'm going to write this out in a short method rather than writing out each individual shot of weft.

The weft thread is 2/12's worsted in the color called tempting tan for all 54 pattern shots.

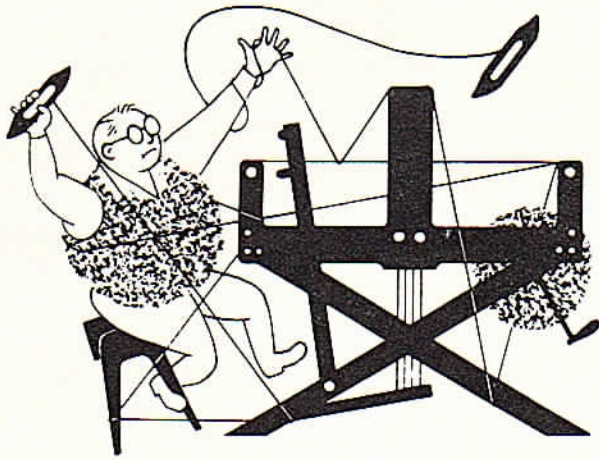
Here is the treadling sequence:

Treadle 1, 2, 1, 4, 3, 4.  
Repeat this a total of 4 times until you have 24 shots. Then,  
Treadle 1, 2, 1, to balance. This is the half way mark in the pattern.

Then:  
Treadle 5, 6, 5, 8, 7, 8.  
Repeat this a total of 4 times until you have 24 shots. Then,  
Treadle 5, 6, 5, to balance, and then this is the end of one complete pattern.

Repeat over and over as desired.





# drafts and designs

## *a guide for 5 to 12 harness weaves*

VOLUME 22, Number 3, November, 1979.

### A WARP FACED WEAVE FOR UPHOLSTERY.

This 8 harness weave is an exciting one, and the results are always pleasing when woven with the proper contrast in colors.

#### WARP:

Two colors of our 20/2 S.S., egyptian cotton quality yarn. For the light color, we used the 20/2 S.S. cotton in Rose Beige. For the dark color, we used the 20/2 S.S. cotton in Seal Brown.

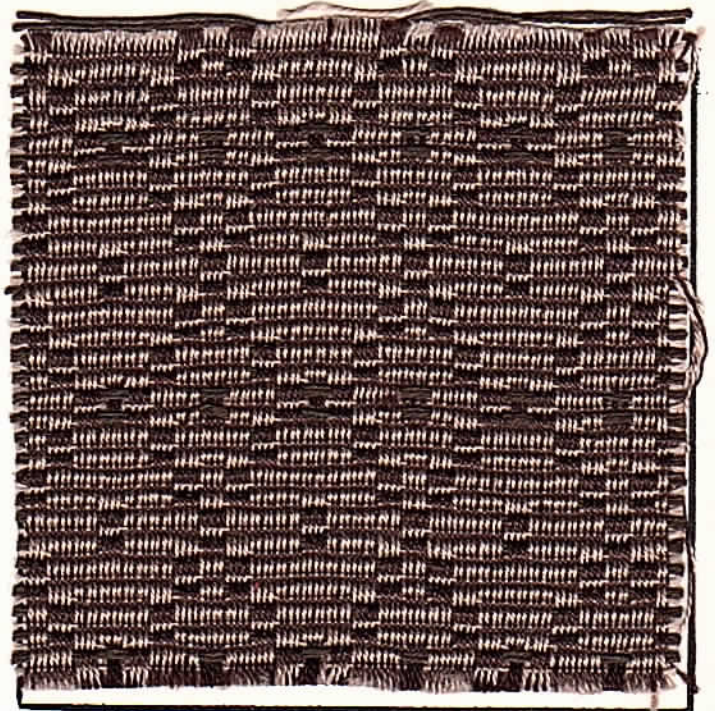
#### WEFT:

There are two threads used in the weft. One is the 16/2 ramie in the dark brown color, for the pattern thread, and it was doubled, 2 ends per bobbin in the weft.

For the tabby, we used the 20/2 S.S. cotton in the color called, Rose Beige.

#### REED USED:

A 15 dent reed was used, and it was sleyed 4 ends per dent, or 60 threads per inch.



#### THREADING DRAFT:

8	L L L L	L L L L
7	D D D D	D D D D
6	L L L L	L L L L
5	D D D D	D D D D
4	L L L L	L L L L
3	D D D D	D D D D
2	L L L L	L L L L
1	D D D D	D D D D



DRAFTS AND DESIGNS:

Published monthly (except July and August.) by Robin & Russ Handweavers, 533 North Adams Street, McMinnville, Oregon 97128.

SUBSCRIPTIONS: \$8.00 per year. Back issues or single copies 85¢ each, plus 15¢ postage. Yearly subscriptions start with the September issue. If you subscribe after September, back issues from then on will be mailed to you, unless you specify that you want your subscriptions to start with the next Sept. issue.

VOLUME 22, Number 3. November, 1979.

TIE-UP DRAFT:

8	0	0	0	0	0	0	0	0	0
7	0	0	0	0	0	0	0	0	0
6	0	0	0	0	0	0	0	0	0
5	0	0	0	0	0	0	0	0	0
4	0	0	0	0	0	0	0	0	0
3	0	0	0	0	0	0	0	0	0
2	0	0	0	0	0	0	0	0	0
1	0	0	0	0	0	0	0	0	0
	1	2	3	4	5	6	7	8	9 10
							A	B	

TREADLING SEQUENCE:

The treadling sequence for this pattern is just 1/2 of the blocks in the threading draft.

1. Treadle # 1 -- dark brown ramie, doubled
2. Treadle # 2 -- 20/2 cotton, rose beige
3. Treadle # 1 -- dark brown ramie, doubled
4. Treadle # 2 -- 20/2 cotton, rose beige
5. Treadle # 3 -- dark brown ramie, doubled
6. Treadle # 4 -- 20/2 cotton, rose beige
7. Treadle # 3 -- dark brown ramie, doubled
8. Treadle # 4 -- 20/2 cotton, rose beige
9. Treadle # 5 -- dark brown ramie, doubled
10. Treadle # 6 -- 20/2 cotton, rose beige
11. Treadle # 5 -- dark brown ramie, doubled
12. Treadle # 6 -- 20/2 cotton, rose beige
13. Treadle # 7 -- dark brown ramie, doubled
14. Treadle # 8 -- 20/2 cotton, rose beige
15. Treadle # 7 -- dark brown ramie, doubled
16. Treadle # 8 -- 20/2 cotton, rose beige
17. Treadle # 1 -- dark brown ramie, doubled
18. Treadle # 2 -- 20/2 cotton, rose beige
19. Treadle # 1 -- dark brown ramie, doubled
20. Treadle # 2 -- 20/2 cotton, rose beige
21. Treadle # 7 -- dark brown ramie, doubled
22. Treadle # 8 -- 20/2 cotton, rose beige
23. Treadle # 7 -- dark brown ramie, doubled
24. Treadle # 8 -- 20/2 cotton, rose beige
25. Treadle # 5 -- dark brown ramie, doubled
26. Treadle # 6 -- 20/2 cotton, rose beige
27. Treadle # 5 -- dark brown ramie, doubled
28. Treadle # 6 -- 20/2 cotton, rose beige

29. Treadle # 3 -- dark brown ramie, doubled
  30. Treadle # 4 -- 20/2 cotton, rose beige
  31. Treadle # 3 -- dark brown ramie, doubled
  32. Treadle # 4 -- 20/2 cotton, rose beige
- End of one pattern repeat. Repeat over and over from the beginning, as desired.

WIDTH AND LENGTH OF WARP, BEFORE AND AFTER WEAVING.

We did a 15 yard warp, 40" wide on the loom. From this we received 12-3/4 yards of finished fabric, and it was 39-1/2" wide when off the loom

COST OF THE THREADS USED:

Our warp was 2 colors of 20/2 S.S., Egyptian cotton. This has 8400 yards per lb., comes on 1/2 lb. cones, and it is \$12.00 per lb., or \$6.00 per 1/2 lb. cone. Comes in 95 colors.

In the weft, we used one thread of the same cotton, and a double thread of the 16/2 ramie. The ramie has 2400 yards per lb., is imported from Switzerland, and we have 24 colors which are sold to us as color fast to both water and sun. It comes to us on 2 1/2 lb. cones, or 4 oz. tubes. Price is \$2.50 per 4 oz. tube, or \$10.00 a lb.

COST OF THE FABRIC:

In our warp of 15 yards, 40" wide, we used 4-1/4 lbs. of warp thread, at \$12.00 per lb., so our cost per yard for warp was \$3.40 per yard, or the total warp cost for 15 yards was \$51.00.

In the weft, we used 4 lbs. 1 oz. of the 16/2 dark brown ramie, which we doubled on the bobbin. And for tabby, we used 15 1/2 oz. of 20/2 rose beige S.S. egyptian cotton in 12-3/4 yards offinished fabric. The total weft cost was \$52.26, and the cost per yard was \$4.10 a yard.

Warp cost per yard, 40" wide	\$ 3.40
Weft cost per yard, 39-1/2"	4.10

=====

FABRIC COST PER YARD ----- \$ 7.50

MORE ABOUT THE FABRIC:

Fairly easy to weave, it is important that you use a firm, even, double beat, as the warp set is so close that it is harder to beat.

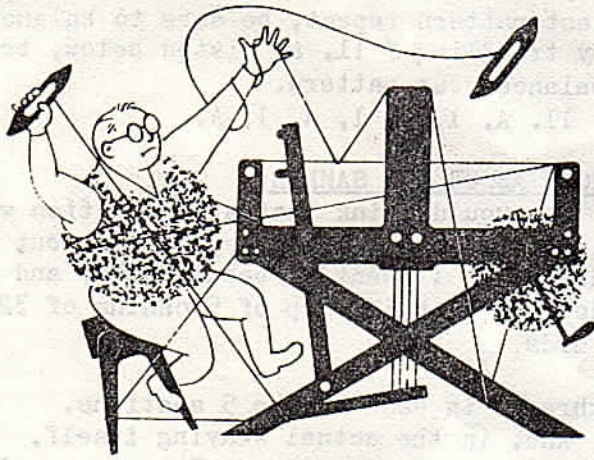
In our sample, we cut the treadling down to 1/2 of the normal block. You can vary your fabric by varying the size of the blocks.

You can also warp with an all dark or an all light color warp, and then a combination of the two, to obtain most interesting results.

This pattern is also most exciting when used in rug weaving, with a contrast of sizes in the two weft threads. We have used the 10/3 cotton for warp and a heavy and fine jute in the weft.



# drafts and designs



TM

## a guide for 5 to 12 harness weaves

VOLUME 22, Number 5, January, 1980.

### LACE AND HUCK GO TOGETHER:

I wanted to call this "the happy hucker", but was vetoed by everyone here at the shop. This striking 8 harness huck variation would be nice for table-cloths, for curtains and drapes, and if we had sett it closer and woven it tighter, would make for a very striking table cloth.

### WARP:

Our warp is a 50/3 sewing thread cotton in a "muddy ecru" color.

### WEFT:

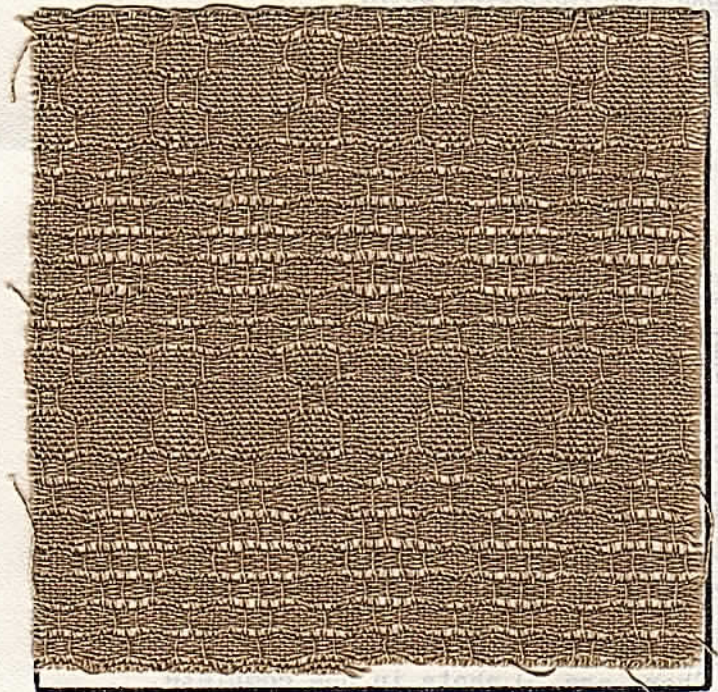
We used the same 50/3 cotton in "muddy ecru" for the weft, as was used in the warp.

### REED USED:

A 20 dent reed was used, and it was double-sleyed, 2 ends per dent, or 40 threads per inch. You could also use a 10 dent reed, and sley it 4 ends per dent for the required 40 ends per inch.

### THREADING DRAFT:

8								X											
7									X			X							
6										X				X					
5											X				X				
4									X							X			
3																			X
2		X	X	X					X	X		X	X		X	X		X	X
1	X	X							X	X		X	X		X	X		X	X
									33										4





### DRAFTS AND DESIGNS:

Published monthly (except July and August,) by Robin & Russ Handweavers, 533 North Adams Street, McMinnville, Oregon 97128.

SUBSCRIPTIONS: \$ 8.00 per year. Back issues or single copies are 85¢ each, plus 15¢ pp. Yearly subscriptions start with the September issue. If you subscribe after September, back issues from September on will be mailed to you, unless you specify that you want your subscription to start with the next September issue.

VOLUME 22, Number 5. January, 1980.

### WIDTH AND LENGTH OF WARP AND WEFT:

Our loom was set-up 40" wide on the loom, and it wove down to about 39" wide in the finished fabric.

We had a 14 yard warp on the loom, and were about 5" over 13 yards of finished fabric, from our 14 yard warp.

### PLAN FOR THREADING LOOM:

1. Thread 1st 3 threads to start.
2. Thread from 4th thread through the 33rd thread over and over for the width you want to have the pattern.
3. Then, thread the last 6 threads to balance the pattern.

### TIE-UP DRAFT:

8		0	0		0		0		
7	0			0		0			0
6					0			0	
5	0	0		0					0
4	0	0	0		0				
3				0		0			
2		0				0	0		0
1	0		0	0				0	

1 2 3 A B 4 5 6

### TREADLING SEQUENCE:

There are 70 shots in one complete pattern repeat. Rather than list them all from 1 to 70, I will list them in rows of seven threads each, by blocks. It will not take as much room this way and by blocks, it will be easier to understand. Treadle as follows:

1. A, 1, A, 1, A, 1, A.
2. B, 2, B, 2, B, 2, B.
3. A, 3, A, 3, A, 3, A.
4. B, 4, B, 4, B, 4, B.
5. A, 5, A, 5, A, 5, A.
6. B, 6, B, 6, B, 6, B.
7. A, 5, A, 5, A, 5, A.
8. B, 4, B, 4, B, 4, B.
9. A, 3, A, 3, A, 3, A.
10. B, 2, B, 2, B, 2, B.

Repeat over and over as desired. On your last pattern repeat, be sure to balance by treadling # 11, as listed below, to balance your pattern.

11. A, 1, A, 1, A, 1, A.

### MORE ABOUT THE SAMPLE:

You would think that a fine cotton warp like this would present problems, but it did not. It went on beautifully, and was done in a chain warp of 5 chains of 320 yards

threads in each of the 5 sections.

And, in the actual weaving itself, there were no problems. There was only one broken warp thread in the entire 14 yard warp, and that might have been frayed when it was being warped.

Sometimes, in winding the bobbin and in weaving, the 50/3 tightly twisted sewing cotton might snarl. If it does, do not pull on it, but carefully unwind it until the tangle falls out, and you should have no other problems.

I was a little disappointed in the color of this new lot of 50/3 "muddy ecru" cotton, but after it was finished, I found that I liked it very much.

This fabric should make excellent sheer drapes, and also, it should make a most beautiful, sheer, table cloth for the likes of card tables, etc. It is very effective because of the shape of the finished weave, giving you horizontal stripes, as well as lace. This sample, I might mention, was washed in luke-warm water, allowed to drip dry, and then steam pressed. I think the result is very pleasing.

### COST OF THE THREAD USED:

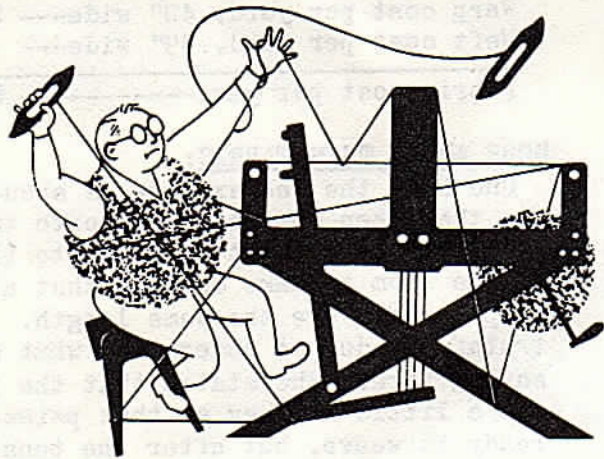
This 50/3 sewing thread is available in Ecru and in White, and we have a new lot of the white on order. Also, we have a large range of colors available in this thread if you are interested. This thread comes on 6,000 yard cones, and it is \$7.00 per cone.

And, the 50/3 that is available in colors, in 64 colors. It comes on 1/2 lb. cones, and is sold by the pound only, and it is \$8.00 per 1/2 lb. cone.

### HANDWEAVERS TOUR OF THE FAR EAST:

In September, your editor will lead a handweaving tour to Japan, to Hong Kong, to Bangkok, Siam, to Singapore, and to Hawaii on the way home. Travel folders on the trip are now ready. If you are interested, send for a free folder on this exciting tour.





# drafts and designs

## *a guide for 5 to 12 harness weaves*

VOLUME 22, Number 7, March, 1980

### THE LAZY SQUAW STITCH:

This 8 harness twill variation in a double weave is very reminiscent of what is called "THE LAZY SQUAW STITCH" that is sometimes used in the making of Indian baskets.

The weave is actually an 8 harness twill weave, in a double weave variation.

### WARP:

We used three different ramie threads in the warp. They are as follows:

- O - Bleached white 16/2 Ramie
- X - Eggshell natural 16/2 Ramie
- G - Gold Beach Gold 16/2 Ramie

### WEFT:

In the weft, we used three different, single ply berber wools. They were as follows:

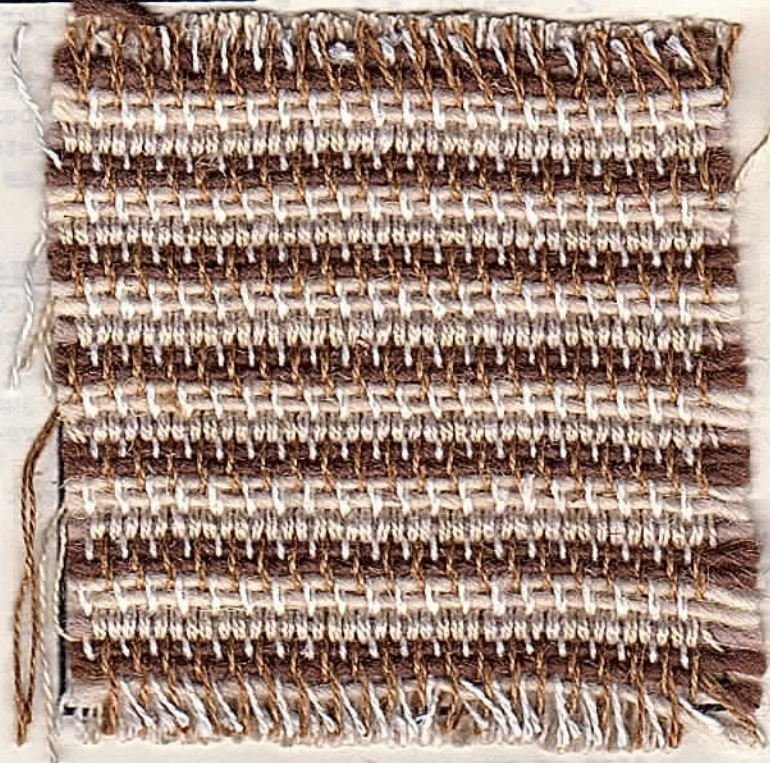
- A - Natural white, single ply Berber
- B - Tannish white, dyed single ply Berber
- C - Camel color, dyed single ply Berber

### REED USED:

This is quite a hard fabric to weave. When you ask why, the answer is that it is a double weave, with twice the number of warp threads than what you usually have. We used a 12 dent reed, and sleyed it 4 ends per dent, for 48 threads per inch.

### KEY TO THREADS IN THE THREADING DRAFT:

- X -- Eggshell Natural Ramie
- G -- Gold Beach Gold Ramie
- O -- Bleached White Ramie



### THREADING DRAFT:

8	X			
7	X			
6	G			
5	G			
4	X			
3	X			
2	O			
1	O			

### TIE-UP DRAFT:

8	O			
7	O			
6			O	O
5			O	O
4	O			
3	O			
2		O	O	
1		O	O	

1 2 3 4 5



### DRAFTS AND DESIGNS:

Published monthly (except July and August,) by Robin & Russ Handweavers, 533 North Adams St., McMinnville, Oregon 97128.

SUBSCRIPTIONS: \$ 8.00 per year. Back issues or single copies 85¢ each, plus 15¢ postage. Yearly subscriptions start with the September issue. If you subscribe after September, back issues from then on will be mailed to you, unless you specify that you want to start with the next September issue.

VOLUME 22, Number 7, March, 1980

### TREADLING SEQUENCE:

There are 5 shots of weft in each pattern repeat. Here is the treadling sequence, with the threads used on each treadle.

1. Treadle # 1 -- Tannish White Berber
2. Treadle # 2 -- Natural Single Berber
3. Treadle # 3 -- Natural Single Berber
4. Treadle # 4 -- Camel Color, Berber
5. Treadle # 5 -- Camel Color, Berber

Note that this is the end of one complete pattern repeat. Repeat over and over as desired.

### COST OF THE THREADS USED AND MORE DETAILS:

The 16/2 ramie in the 3 colors has 2400 yards per lb., comes on either 2½ lb. cones or 4 oz. tubes, and it is \$10.00 per lb., while our current stock lasts. We've just had new wholesale prices, and when we re-order, it will go up to \$14.00 per lb. We do have a pretty good stock left of most of the colors, and are about out of the eggshell natural.

The single ply berber is available in just the natural, the tannish white, and the camel color. It comes on cones of about 1 lb. 4 oz. each, and it is \$6.00 per lb. It has 560 yards per lb.

### COST OF THE FABRIC:

We had a 14 yard warp, and it was 40" wide. It took 11-1/4 lbs. of thread for warp, and at \$10.00 per lb., our warp cost was \$112.50. So, the cost per yard was \$8.04 per yard. And in the weft, it took 6 lbs. each of two of the berber wools, and one lot of 3 lbs. of the third color, or 15 lbs. We had 12 and 1/2 yards of finished fabric from our 14 yard warp. So the weft cost for 12½ yards was \$90.00 or the cost per yard for the weft, comes to \$7.20 per yard.

Warp cost per yard, 40" wide--- \$ 8.04

Weft cost per yard, 39" wide--- 7.20

Fabric cost per yard----- \$15.24

### MORE ABOUT THIS FABRIC:

One hint the weaver gave us about this was that when she was tying onto the cloth beam, attention must be given to the back of the loom to make certain that all of warp threads are the same length. I, truthfully do not understand what she is saying here. She states that the ramie was a little sticky at that point when ready to weave, but after the tension was tightened, there were no more problems in regards the sticky threads. One reason for this stickiness is the sett of 48 ends per inch, which is twice what it normally is.

It should be pointed out that the natural color thread in the warp appears to be too loose for the rest of the threads, but in the weaving, this is taken up to make the ridge, and so it does tighten up in the weaving.

Once the threading was completed, the actual weaving was very fast.

Also, if you start the natural berber and the camel berber from the same side in the weaving, it will give you a nicer selvage than if you start one from each side. Also, it will be faster to weave, if you do it in this manner.

### NOTE ABOUT THE SAMPLE:

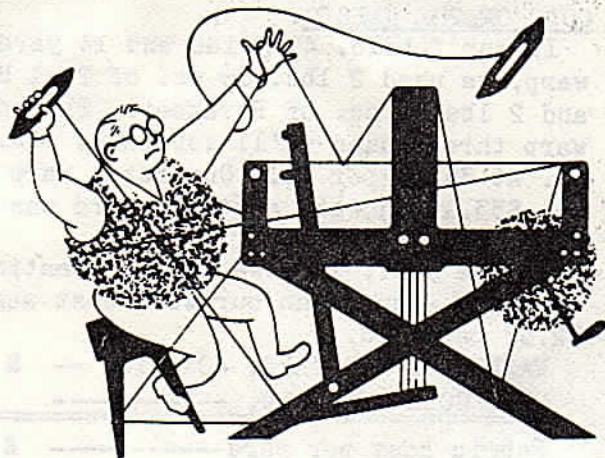
This sample was designed and woven by Karen Gartner.

### HAND-WEAVERS TOUR TO THE ORIENT:

Travel folders are now available for any who might be interested in our weaving tour to Japan, to Singapore, to Bangkok, Thailand (Siam), and to Hawaii, leaving September 1, 1980. For further details, send for one of our travel brochures, giving the day by day plan for our tour.

And, believe it or not, this is one of the best travel buys you will find, as the trip will include all air-fare, all all tips, two meals a day, breakfast and dinner, some train travel fare, and the services of an experienced guide, and some special sight-seeing arrangements. Write to Robin & Russ for the travel folder for this trip.





# drafts and designs

## a guide for 5 to 12 harness weaves

VOLUME 22, Number 8, April, 1980.

### CUCUMBER VINE:

We've gone overboard with shadow weaves this past year or two, and I particularly like this one. Wait until you see the other variation of treading that we did on this same set-up in different colors. We promise that we've give you a greater variety of weaves during the coming year.

### WARP:

Our warp is a 50% Worsted, 50% Nylon blended yarn in two colors. The colors are:

- X -- Teal Blue 2/8's blended yarn
- O -- Parakeet 2/8's blended yarn

### WEFT:

The same two threads that were used in the warp, were also used in the weft.

### REED USED:

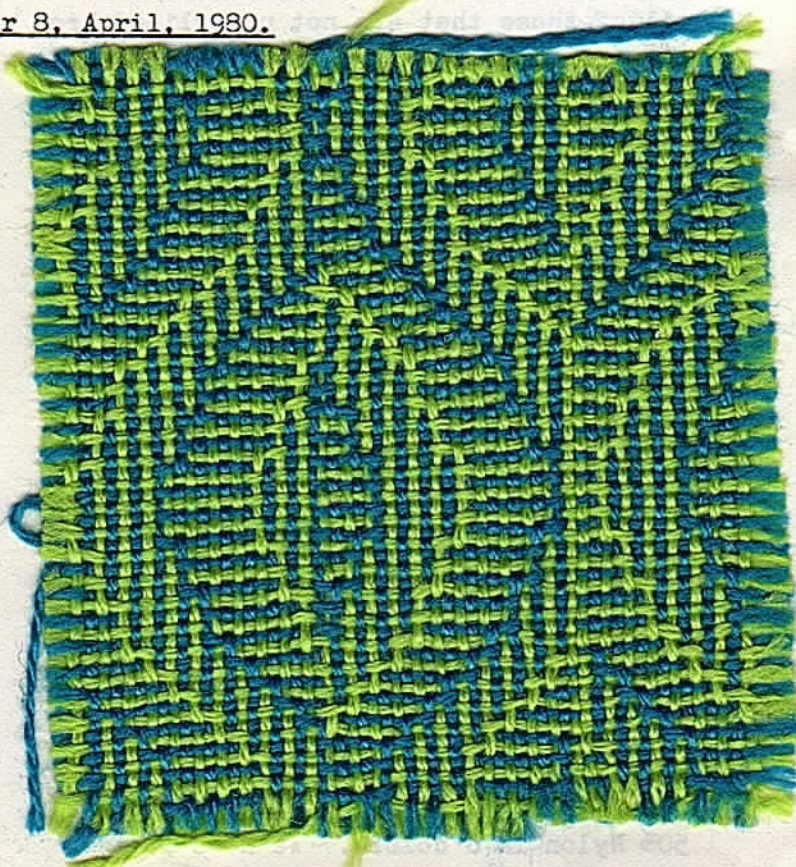
An 8 dent reed was used, and it was double sleyed, 2 ends per dent or 16 ends per inch.

### THREADING DRAFT:

8	O		X	O	O	X	
7	X		O	X	OX	O	
6	O		X	O	X	O	X
5	X		O	X	O	X	O
4		O	X	O	X	O	X
3		X	O	X	O	X	O
2		O	X	O	X	O	X
1		X	O	X	O	X	O

### KEY, THREADS IN THREADING DRAFT

- O -- Parakeet, 2/8's worsted
- X -- Teal Blue 2/8's worsted



### TIE-UP DRAFT:

8	O	O	O	O	O		
7		O	O	O	O		
6	O		O	O	O		
5		O		O	O		
4	O		O		O		
3		O		O	O		
2	O		O		O		
1		O		O	O		

1 2 3 4 5 6 7 8



### DRAFTS AND DESIGNS:

Published monthly (except July and August,) by Robin & Russ Handweavers, 533 North Adams St., McMinnville, Oregon 97128.

SUBSCRIPTIONS: \$ 8.00 per year. Back issues or single copies 85¢ each, plus 15¢ postage. Yearly subscriptions start with the September issue. If you subscribe after September, back issues from then on will be mailed to you, unless you specify that you want to start with the next September issue.

VOLUME 22, Number 8. April, 1980.

### TREADLING SEQUENCE:

There are 64 shots on one complete pattern repeat. I will list them in rows of 8 for convenience, and all of those that are underlined are the Parakeet 2/8's. All of those that are not underlined are the Teal Blue.

Here is the sequence.

1. 1, 2, 3, 4, 5, 6, 7, 8,
2. 2, 1, 4, 3, 4, 3, 6, 5,
3. 6, 5, 8, 7, 8, 7, 8, 5,
4. 6, 5, 6, 3, 4, 3, 4, 1,
5. 2, 8, 7, 6, 5, 4, 3, 2,
6. 1, 7, 8, 7, 8, 5, 6, 5,
7. 6, 3, 4, 3, 4, 3, 4, 3,
8. 6, 5, 6, 5, 8, 7, 8, 7.

This is the end of one complete pattern repeat. Repeat over and over as desired.

### SOURCE OF IDEA FOR THIS WEAVE.

This pattern is one designed by Marian Powell, and is in her Shadow Weave book which we published. It is the 8 harness pattern on page # 223, and we used the treadling variation # 11 for this sample.

### THE THREADS USED:

We have the 2/8's yarn, 50% wool and 50% Nylon in 6 colors. We have 5 of the colors on a sample sheet, and did not put the 6th color, The Teal Blue on the sample sheet as there was only about 20 lbs. of it. This came on cones varying from about 1 to 3 lbs. each. It has about 2,000 yards per lb., and it sells at \$6.80 per lb.

### COST OF THE FABRIC:

In our fabric, 40" wide and 14 yards of warp, we used 2 lbs. 6 1/2 oz. of Teal Blue and 2 lbs. 7 oz. of Parakeet. The total warp thread used we'll say was 4 lbs. 14 oz. at \$6.80 per lb. Our total warp cost was \$33.15 and the cost per yard was \$2.37 per yard.

In the weft, we used almost identically the same amount, so our weft cost was \$2.37 per yard.

WARP COST PER YARD, 40" wide -- \$ 2.37

WEFT COST PER YARD, ----- 2.37

Fabric cost per yard----- \$ 4.74

### WIDTH AND LENGTH OF WARP, BEFORE AND AFTER.

Our warp was 14 yards long, and it was set-up 40" wide on the loom. We used a stretcher on this and had very little trouble with broken threads. The finished web was 39" wide, and we had 13 yards and 6" from our 14 yard warp.

### MORE ABOUT THE FABRIC:

In case any of you question it, the threading draft is correct, and the 16th and the 17th threads are both threaded on harness # 7, using separate heddles for each thread.

The treadling is somewhat slow, because it is so irregular, but it is the changes like this, that make these shadow weaves the exciting patterns that they are.

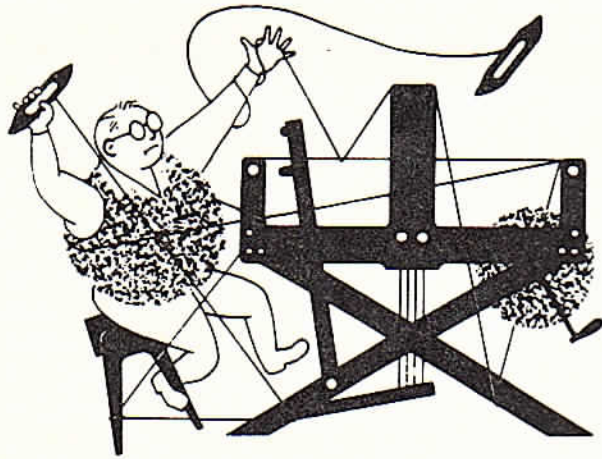
The edge threads tended to fray, so we used a temple and had no problems then.

### HAND-WEAVERS TOUR TO THE ORIENT:

Travel folders are now available for any who might be interested in our weaving tour to Japan, to Singapore, to Bangkok, Thailand (Siam), and to Hawaii, leaving September 1, 1980. For further details, send for one of our travel brochures, giving the day by day plan for our tour.

And, believe it or not, this is one of the best travel buys you will find, as the trip will include all air-fare, all all tips, two meals a day, breakfast and dinner, some train travel fare, and the services of an experienced guide, and some special sight-seeing arrangements. Write to Robin & Russ for the travel folder for this trip.





# drafts and designs

## *a guide for 5 to 12 harness weaves*

VOLUME 22, Number 10, June, 1980

### FALL FIELD BURNING:

In Oregon every fall, after the crops are harvested, they quite often burn the fields to kill the weeds, and this 8 harness warp-ribbed double weave reminds us of the fields we see as we drive to work and home in the evening.

### THREADING DRAFT:

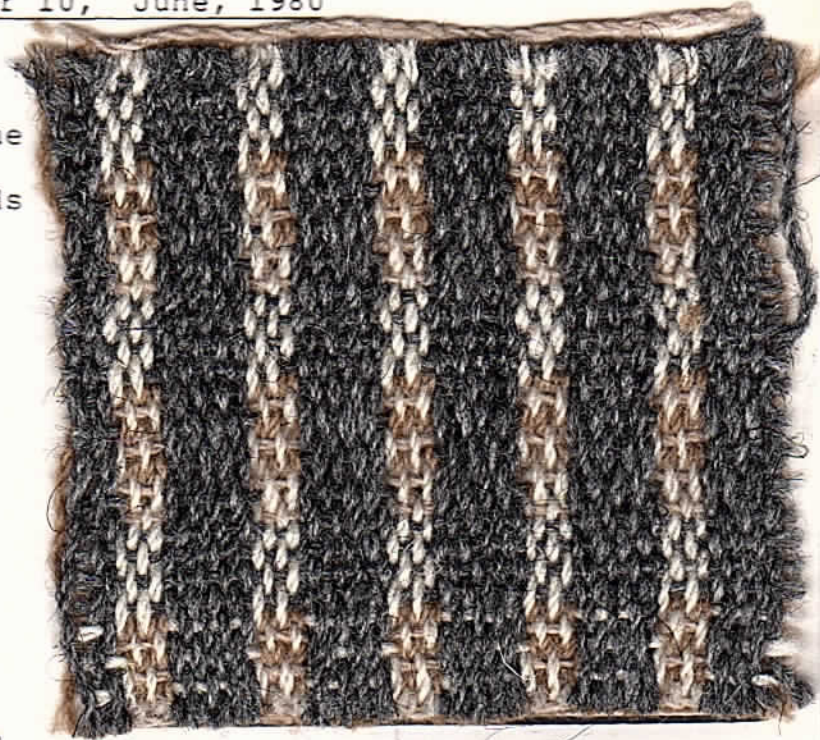
8	p	p					
7	o	o					
6		p	p				
5		o	o				
4			x	x	x	x	
3			p	p	p	p	
2			x	x	x	x	
1			p	p	p	p	

### KEY TO COLORS IN THE THREADING DRAFT:

- p -- London peach, actually a medium beige, 25% mohair, 25% alpaca, 30% wool, 20% nylon yarn.
- o -- Thames Nile, actually a bleached 2 ply, alpaca, wool, mohair, & nylon blend.
- x -- Thames fog, actually a darker grey heather, blend of alpaca, wool, mohair & nylon.

### WARP THREADS USED:

- p -- london peach, blended wool in oil
- o -- thames nile, scoured blended wool
- x -- thames fog, scoured blended wool



### TIE-UP DRAFT:

8	o	o		o	o		o		
7		o			o			o	
6		o	o	o	o		o		
5				o		o	o		
4		o				o			
3	o	o		o	o	o		o	
2				o				o	
1		o	o	o		o	o	o	
	1	2	3	4	5	6	7	8	



DRAFTS AND DESIGNS:

Published monthly (except July & August, by Robin & Russ Handweavers, 533 North Adams St., McMinnville, Ore. 97128.

SUBSCRIPTIONS: \$10.00 per year. Back issues or single copies are \$1.25 each, plus 15¢ postage. Yearly subscriptions start with the Sept. issue. If you subscribe after September, back issues from September on will be mailed to you, unless you specify that you want your subscription to start with the next September issue.

VOLUME 22, Number 10, June, 1980

TREADLING SEQUENCE:

There are 3 units of color sequence and treadling. I will call these 3 units A, B, and C. I will give the treadling and color sequence for each of these three units. Then, after that, I will give the unit sequence that we used in our sample.

- A Unit: 1. Treadle # 1, Lt. Beige
- 2. Treadle # 2, Charcoal
- 3. Treadle # 3, Lt. Beige
- 4. Treadle # 4, Charcoal
- 5. Treadle # 1, Lt. Beige
- 6. Treadle # 2, Charcoal
- 7. Treadle # 3, Lt. Beige
- 8. Treadle # 4, Charcoal

- B Unit: 1. Treadle # 5, Lt. Beige
- 2. Treadle # 6, Charcoal
- 3. Treadle # 7, Lt. Beige
- 4. Treadle # 8, Charcoal
- 5. Treadle # 5, Lt. Beige
- 6. Treadle # 6, Charcoal
- 7. Treadle # 7, Lt. Beige
- 8. Treadle # 8, Charcoal

- C Unit: 1. Treadle # 5, Lt. Beige
- 2. Treadle # 6, Natural
- 3. Treadle # 7, Lt. Beige
- 4. Treadle # 8, Natural
- 5. Treadle # 5, Lt. Beige
- 6. Treadle # 6, Natural
- 7. Treadle # 7, Lt. Beige
- 8. Treadle # 8, Natural

This is the end of the 3 different units. Here is the Unit sequence that we used in the weaving of this sample.

- 1. Unit # A -- one time, 8 shots
- 2. Unit # B -- one time, 8 shots
- 3. Unit # A -- one time, 8 shots
- 4. Unit # B -- one time, 8 shots
- 5. Unit # A -- one time, 8 shots
- 6. Unit # C -- one time, 8 shots

This is one complete pattern repeat. There are 48 shots in one complete pattern

and you repeat over and over. Of course, you can revise the treadling sequence to fit your needs.

MORE ABOUT THE THREADS USED:

This nice quality, 2 ply thread is a blend of 25% Alpaca, 25% mohair, 30% wool and 20% nylon. It is good for either warp or weft. We have two qualities of it. The first quality, has 7 colors and this yarn has been scoured so that it doesn't have much oil in the yarn. It has 1600 yards per lb., and comes on approximately one pound cones, and all of the 7 scoured (Thames) colors are \$9.60 per lb.

Then, we still have this same yarn, still in the oil in 5 colors. With the oil in it, it is called "London" yarn, and has the same yardage and put-up, and is \$8.00 per lb.

WEFT THREADS USED:

In the weft, we used two of the three threads that were in the warp. We used the Thames Nile, and we used also the Thames Fog. The third color used in the weft is a lighter color one, a blending of 25% alpaca, 25% mohair, 30% wool, and 20% nylon in a color called Thames Straw, which is a lighter beige color.

REED USED:

An 8 dent reed was used, and it was double-sleyed, 4

REED USED:

An 8 dent reed was used, and it was sleyed 4 ends per dent, or 32 threads per inch for this double-weave fabric.

MORE ABOUT THIS FABRIC:

This sample was hard to weave. The normal sett for this thread is about 16 e.p.i., and if you do a double weave as this one is, then you need double the number of warp threads, or 32 ends per inch. So, the threads would tend to cling together somewhat when changing your shed to throw the next shuttle.

COST OF THE FABRIC:

We had a 13 yard warp, 40" wide on the loom. From this, we received 11 yards and 13" of finished fabric. In the warp and weft, we used the following listed amounts of thread.

- London fog--used 5 lbs. 8 oz- \$44.00
- London peach--used 4 lbs. 15 oz 39.50
- Thames Straw--used 2 lbs. 1 oz. 19.80
- Thames Nile--used 2 lbs. 2 oz. 20.40

COST OF THREAD IN 11 yds. 13" \$123.70  
FABRIC COST PER YARD----- 11.25