

drafts and designs



a guide for 5 to 12 harness weaves

VOLUME 23, Number 2. October, 1980

A MAPLE SYRUP WAFFLE WEAVE:

Our sample this month is an 8 harness waffle weave, which has been very exciting to weave and see progress on the loom.

KEY TO COLORS IN THE THREADING DRAFT:

- X--20/2 Egyptian Cotton, color Tan.
- O--20/2 Egyptian Cotton, color SEAL.

WARP:

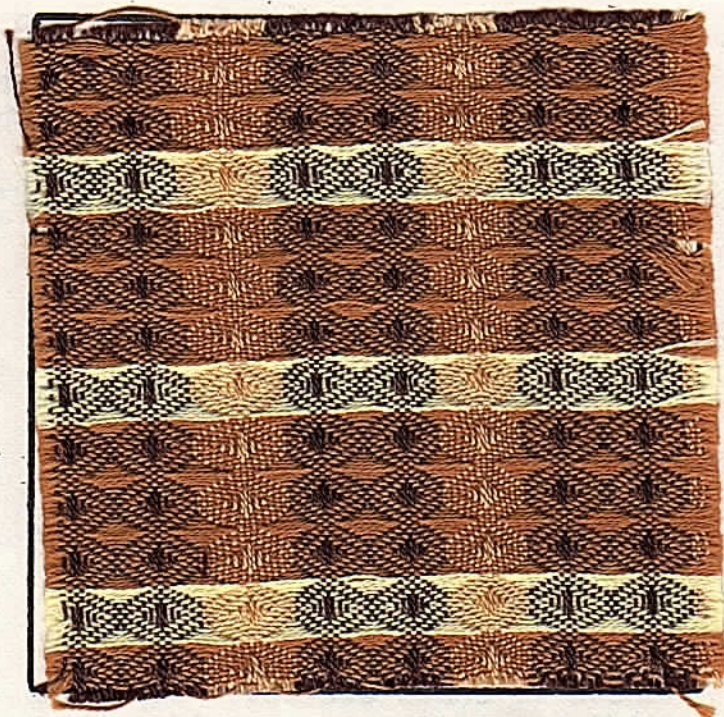
Two colors of 20/2 egyptian cotton have been used in the warp. They are as follows:

- X--20/2 color, Tan.
- O--20/2 color, Seal Brown.

WEFT:

Two different colors of 20/2 egyptian cotton were used in the weft. They are:

1. 20/2 egyptian cotton, POPCORN
2. 20/2 egyptian cotton, golden brown.



THREADING DRAFT:

8			O			X			X
7	O		O	O		O	X		X
6	O		O	O		O	X		X
5	O		O	O		O	X		X
4		O	O		O	O		X	X
3		O	O		O	O		X	X
2		O	O		O	O		X	X
1		O			O			X	

TIE-UP DRAFT:

8			O							O
7		O		O						O
6		O		O						O
5		O		O						O
4		O	O		O					O
3		O	O		O					O
2		O	O		O					O
1		O	O		O					O

1 2 3 4 5 6 7 8 A B
9 10

DRAFTS AND DESIGNS:

Published monthly (except July & August) by Robin & Russ Handweavers, 533 North Adams St., McMinnville, Oregon 97128.

SUBSCRIPTIONS: \$10.00 per year. Canadian is \$11.00 per year, and foreign subscriptions are \$12.00 per year. Back issues or single copies at \$1.25 each, plus 15¢ postage. Yearly subscriptions start with the September issue. If you subscribe after September, back issues from September on will be mailed to you, unless you specify that you want it to start with the next September issue.

VOLUME 23, Number 2. October, 1980.

REED USED:

A 15 dent reed was used, and it was double sleyed, 2 ends per dent of 30 ends per inch.

LENGTH AND WIDTH OF WARP, BEFORE AND AFTER.

Our warp was set-up on the loom, 29" wide, and it was 12 yards long. With the use of a stretcher, it ended up being 28" wide, and the finished length from our 12 yard warp, was 11 yards and 7".

TREADLING SEQUENCE:

As our treading sequence is 56 shots long, rather than make a long column 56 spaces long, we will list it in rows.

Treadle as follows:

8,7,6,5,4,3,2,1,2,3,4,5,6,7,8, all in the Popcorn 20/2 egyptian cotton.

Then treadle:

7,6,5,4,3,2,1,2,3,4,5,6,7,8,

7,6,5,4,3,2,1,2,3,4,5,6,7,8,

7,6,5,4,3,2,1,2,3,4,5,6,7. All these 41 shots are woven with the 20/2 egyptian cotton, golden brown.

End of one complete pattern repeat. Repeat over and over as desired.

COST OF THE FABRIC:

In our warp, we used 1-1/8 lbs. of the 2 colors of egyptian cotton. At \$13.00 per lb., this comes to \$14.63 for the warp cost for 12 yards. Thus, our warp cost comes to \$1.22 per yard.

In the weft, because of the type of weave, we averaged about about 60 shots per inch. So, it took much more weft than warp. We used about 23 oz. of the golden brown and about 13 oz. of the popcorn. So, our total weft

cost for 11 yards 7" of finished fabric was \$29.25 or the cost per yard was \$2.66.

WARP COST PER YARD, 29"wide \$1.22

WEFT COST PER YARD----- 2.66

FABRIC COST PER YARD----- \$3.88

COST OF THE THREADS USED:

The 20/2 S.S., cotton is a regular stock item. It is available in about 95 colors, and it is mercerized and also gassed. Price is \$13.00 per lb., and it comes on 1/2 lb. cones.

MORE ABOUT THE SAMPLE:

First of all, as it is a waffle weave that we feature this month, you want to use a firm, even, double beat. Because of the nature of the construction in this weave, it takes almost 60 shots per inch in the weft.

Also, our weaver for this sample made a mistake in setting up, so we had only a 29" wide warp, instead of a 40" wide warp. Thus, we needed every bit that we could, so we used a stretcher, set-up at 29" wide, and when off the loom, the fabric was 28". I would say that we saved 1 to 2" width on this by the use of the stretcher, plus it helped eliminate the breakage of warp threads.

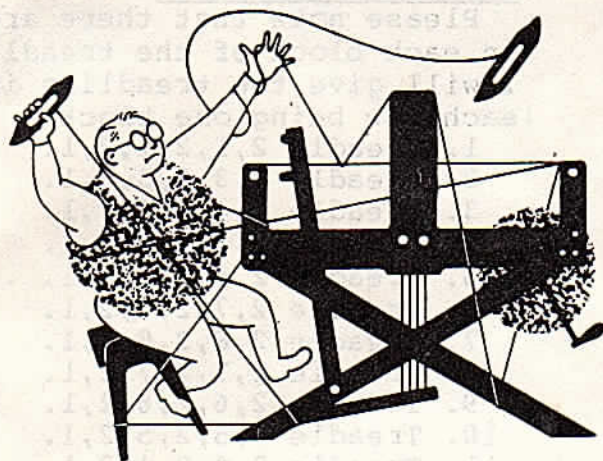
One of our customers, who is an avid weaver, asked us for a sample of a waffle weave, and this is the result. I think it is quite beautiful, and was very pleased with our efforts.

And sometimes, this weave is very effective in much heavier threads. It does result in longer floats, but you can achieve some very nice fabrics with heavier threads.

I have seen many lap robes, and some blankets made with this type of waffle weave, and they are very effective. The main way of decorating these lap robes is to have a heavier thread for the rib thread in both the warp and weft, and a finer thread for the pocket threads.

One time I wove this just the opposite, using a fine thread for the rib, and then the heavier threads for the pocket, and this too, was quite effective.

As you can see from the threading draft, this is just a point twill weave, and the special tie-up is what gives us the waffle weave effect.



drafts and designs

a guide for 5 to 12 harness weaves

VOLUME 23, Number 3. November, 1980.

A DELIGHTFUL SWEDISH LACE WEAVE IN EIGHT (8) HARNESSSES.

We are so pleased with the way this Swedish Lace Weave turned out, we only wish that you could see it in the large piece. It is so much more attractive than our sample piece, and the total pattern can be seen only when you see a piece 4 times the size of our sample.

WARP:

Two threads are used in the warp. They are the 40/2 bleached white mercerized ramie which is the O thread in the threading draft, and the other thread is the 45/3 raw grey Irish linen, which is the X thread in the threading draft.

WEFT:

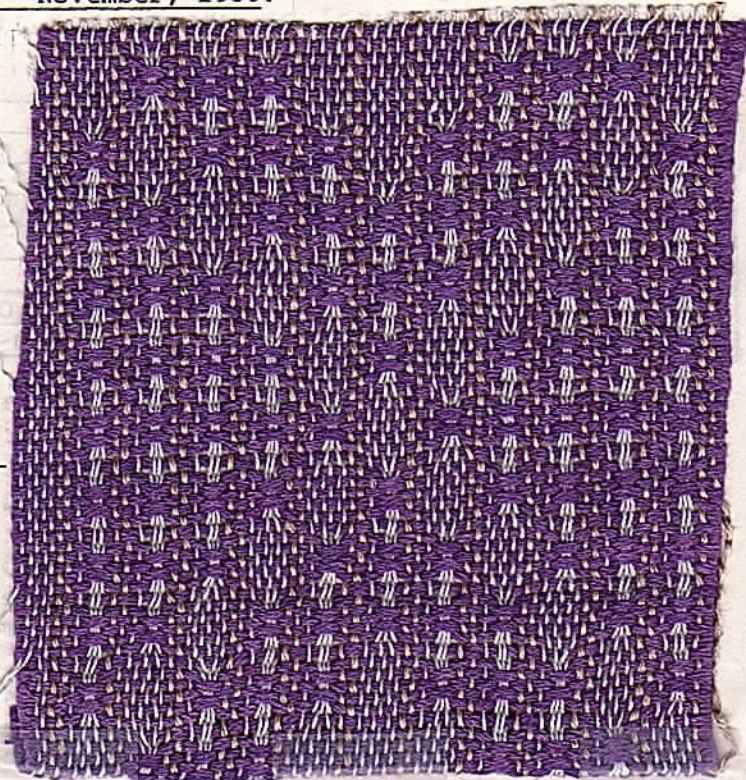
Only one thread is used in the weft, and it is the 6 strand cotton in a color called Violet Pansy.

REED USED:

An 12 dent reed is used, and it is double-sleyed 2 ends per dent, or 24 ends per inch.

TIE-UP DRAFT:

8	0	0	0	0	0	0	0	
7	0	0	0	0	0	0	0	
6	0	0	0	0	0	0	0	
5	0	0	0	0	0	0	0	
4	0	0	0	0	0	0	0	
3	0	0	0	0	0	0	0	
2	0	0	0	0	0	0	0	
1	0	0	0	0	0	0	0	
	1	2	3	4	5	6	7	8



WIDTH AND LENGTH OF WARP BEFORE AND ALSO AFTER WEAVING.

When set-up on the loom, our warp was 40" wide, and was 12 yards long. From this we had a finished width fabric of 37" when off the loom, and 11-1/4 yards of finished fabric from our 12 yard warp.

MORE ABOUT THE SAMPLE:

We had only 2 broken threads in the entire 12 yard length of warp, and this was the 45/3 linen which frayed apart on the right side.

You want to be sure to use a firm, even, double or triple beat. I throw the shuttle, beat, change to the next

DRAFTS AND DESIGNS:

Published monthly (except July & August) by Robin & Russ Handweavers, 533 North Adams St., McMinnville, Oregon 97128.

SUBSCRIPTIONS: \$10.00 per year. Canadian is \$11.00 per year, and foreign subscriptions are \$12.00 per year. Back issues or single copies at \$1.25 each, plus 15' postage. Yearly subscriptions start with the September issue. If you subscribe after September, back issues from September on will be mailed to you, unless you specify you want it to start with the next September issue.

VOLUME 23, Number 3. November, 1980.

shed and beat again before I throw the shuttle again. I think it is important that you use a firmer beat when your warp is linen or ramie, than when your warp is cotton, rayon, wool or synthetic.

I originally wanted to weave this pattern with natural or white, but it

TREADLING SEQUENCE:

Please note that there are 6 shots in each block of the treadling. So, I will give the treadling in rows, each row being one block.

1. Treadle 2,1,2,1,2,1.
2. Treadle 2,3,2,3,2,1.
3. Treadle 2,4,2,4,2,1.
4. Treadle 2,5,2,5,2,1.
5. Treadle 2,6,2,6,2,1.
6. Treadle 2,7,2,7,2,1.
7. Treadle 2,8,2,8,2,1.
- 8, Treadle 2,7,2,7,2,1.
9. Treadle 2,6,2,6,2,1.
10. Treadle 2,5,2,5,2,1.
11. Treadle 2,4,2,4,2,1.
12. Treadle 2,3,2,3,2,1.

End of one complete pattern repeat. Repeat over and over as desired.

Be sure on your last repeat, to end with the 2,1,2,1,2,1 block to balance your fabric, so it begins and ends on the same block.

THREADING DRAFT:

8							0 0													
7						0 0				0 0										
6					0 0							0 0								
5				0 0									0 0							
4			0 0											0 0						
3	0 0																		0 0	
2	X	O	O	O	X	O	O	O	X	O	O	O	X	O	O	O	X	O	O	O
1	X	O		X	O		X	O		X	O		X	O		X	O		X	O

did not show up well enough for me, and for you to see the pattern. So, I tried many different threads in the weft before settling on this 8 strand cotton floss, which worked very well. I think that any of the darker, intense colors will work well in the weft, and the darker colors will work better than do the light or medium value colors. I tried a dark red, a maroon, a dark green, and one or two other colors in the cotton floss, and the pattern stands up well with all of these.

Also, I'm sorry to say so, but the pattern is much more interesting than our sample shows. You have to see what the whole finished cloth looks like to see all aspects of the pattern. Actually, 4 of the squares like our sample are needed to see the complete pattern, as when you have these squares next to one another, then a large diamond also shows up on the table-cloth fabric. So, you have squares, X's inside the squares, and a large diamond which you have no idea is there unless you have a larger sample swatch.

Swedish lace has always been one of my favorite weaves. However, on an 8 harness pattern, you have to lift 7 harnesses

against one for every 6th shot of weft. Otherwise, you use a walking treadling, and the weaving is much faster than one thinks it is.

I was also much pleased with the effect achieved by using the 45/3 raw grey linen in the warp. Note that it turns to a distinct shade of lavender in the weaving.

COST OF THE THREADS USED:

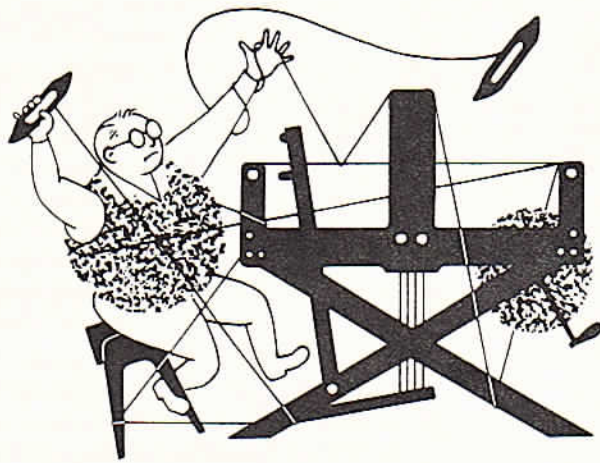
The 40/2 bleached, mercerized ramie is \$13.60 per lb.

The 45/3 raw grey Irish linen is \$8.80 per lb.

In the weft, our 6 strand floss was the only weft, and we have 25 colors at \$8.00 a lb.

COST OF FABRIC:

WARP COST PER YARD, 40"- \$2.34
 WEFT COST PER YARD, ---- 2.30
 =====
 FABRIC COST PER YARD---- \$4.64



TM

drafts and designs

a guide for 5 to 12 harness weaves

VOLUME 23, Number 4. December, 1980

STRAWBERRIES AND CREAM:

This 6 harness weave is beautiful in the 6 strand cotton floss for the warp and weft. It is a combination of a basket weave, and an overshoot weave, done in 6 harnesses.

KEY TO COLORS IN THE WARP:

- X -- 5/2 Black, mercerized cotton
- O -- Pink, 6 strand cotton floss # 3326
- A -- Bright Red, 6 strand floss # 321
- B -- Dark Red, 6 strand floss # 321A

WARP:

Two different threads are used in the warp. The 6 strand cotton floss is used in three colors, and the 5/2 black cotton thread is the 2nd type of thread in the warp. See key above to colors in the warp.

WEFT:

The same colors are used in the weft, but in different combinations.

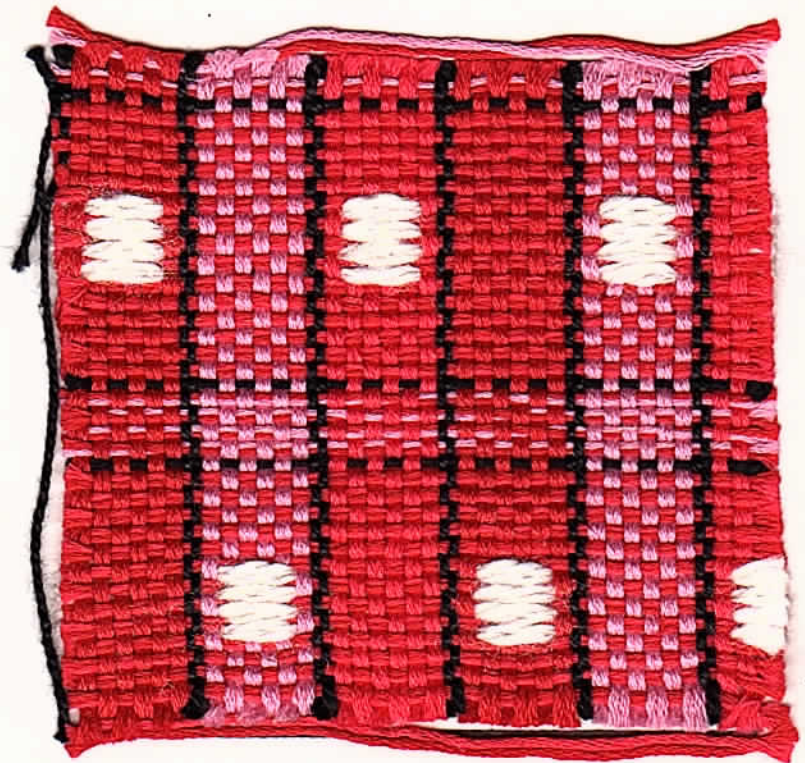
One weft thread is the 5/2 black cotton.

A second weft thread, we wound the bright red # 321 and the dark red # 321A, 6 strand floss, both together on the same bobbin.

The third weft thread, we wound the dark red # 321A and the pink # 3326 cotton floss both together on one bobbin. These were the weft threads used.

THREADING DRAFT:

6	AA	AA		OO	OO		BB	BB										
5		AA	AA		OO	OO		BB	BB									
4			BB	BB		AA	AA		OO	OO								
3			BB	BB		AA	AA		OO	OO								
2		AA	X		BB	X		OO	X		AA	X		BB	X		OO	X
1	AA		X	BB		X	OO		X	AA		X	BB		X	OO		X



So, you have in the weft one shuttle with bright and dark red both wound together on that bobbin, and a second shuttle with the pink and dark red wound together, and the third shuttle had the black 5/2 cotton on it's bobbin. AND, WE MUSN'T FORGET THE WHITE PATTERN THREAD, which we also doubled on the bobbin on the 4th shuttle.

DRAFTS AND DESIGNS:

Published monthly (except July & Aug.)
by Robin & Russ Handweavers, 533 North
Adams St., McMinnville, Oregon 97128.

SUBSCRIPTIONS: \$10.00 per year. Canadian
is \$11.00 per year, and foreign subscrip-
tions are \$12.00 per year. Back issues or
single copies at \$1.25 each, plus 15¢ pp.
Yearly subscriptions start with the Sept.
issue. If you subscribe after September,
back issues from September on will be
mailed to you, unless you specify you want
your subscription to start with the next
September issue.

VOLUME 23, Number 4. December, 1980:

REED USED:

We used a 10 dent reed, and we double
sleyed it, 2 ends per dent, or 20 threads
per inch.

COST OF THE THREADS USED:

The cotton floss, we have about 33 colors
with from 25 to 50 lbs. of each color. It
normally sells for \$19.75 per pound, but we
have these 33 colors on special sale at
\$8.00 per lb. Some colors came on skeins,
9 of them, and the minimum order is one
skein of a color. Skeins are about 1/2 lb.
each. The cones weigh from 1 lb. to 2½ lbs.
each, so we decided to wind these off onto
1/2 lb. tubes of 1,040 yards each. This
cotton has 2080 yards per lb., and the
price is \$8.00 per lb. while it lasts.
COTTON FLOSS, 33 colors, \$8.00 per lb.
while it lasts.

Our 2nd thread in the warp and weft is
the black 5/2 cotton at a special price
of \$6.00 per lb., on cones of about 14 oz.
each.

Our third thread, the white 2 ply rayon
floss type yarn comes on about 1 lb.
cones, and is priced at \$4.00 per lb.

TREADLING:

Here is the treadling sequence for
one complete repeat, starting with the
black 5/2 cotton.

1. # 6, 5/2 black mercerized cotton
2. # 5, pink & dk. red floss together
3. # 6, pink & dk. red floss together
4. # 5, pink & dk. red floss together
5. # 6, pink & dk. red floss together
6. # 5, 5/2 black mercerized cotton
7. # 6, dk. & brt red floss together
8. # 5, dk. & brt red floss together
9. # 6, dk. & brt red floss together
10. # 5, dk. & brt red floss together
11. # 6, dk. & brt red floss together
12. # 5, dk. & brt red floss together
13. # 2, white floss doubled.
14. # 6, dk. & brt red floss together
15. # 2, white floss doubled

16. # 5, dk. & brt red floss together
 17. # 2, white floss doubled
 18. # 6, dk. & brt red floss together
 19. # 2, white floss doubled
 20. # 5, dk. & brt red floss together
 21. # 6, dk. & brt red floss together
 22. # 5, dk. & brt red floss together
 23. # 6, dk. & brt red floss together
 24. # 5, dk. & brt red floss together
 25. # 6, dk. & brt red floss together
 26. # 5, 5/2 black mercerized cotton
 27. # 6, pink & dk red floss together
 28. # 5, pink & dk red floss together
 29. # 6, pink & dk red floss together
 30. # 5, pink & dk red floss together
 31. # 6, 5/2 black mercerized cotton
 32. # 5, dk. & brt red floss together
 33. # 6, dk. & brt red floss together
 34. # 5, dk. & brt red floss together
 35. # 6, dk. & brt red floss together
 36. # 5, dk. & brt red floss together
 37. # 6, dk. & brt red floss together
 38. # 4, white floss doubled
 39. # 5, dk. & brt red floss together
 40. # 4, white floss doubled
 41. # 6, dk. & brt red floss together
 42. # 4, white floss doubled
 43. # 5, dk. & brt red floss together
 44. # 4, white floss doubled
 45. # 6, dk. & brt red floss together
 46. # 5, Dk. & brt red floss together
 47. # 6, dk. & brt red floss together
 48. # 5, dk. & brt red floss together
 49. # 6, dk. & brt red floss together
 50. # 5, dk. & brt red floss together
- End of one complete pattern repeat. Do
repeat over and over as desired.

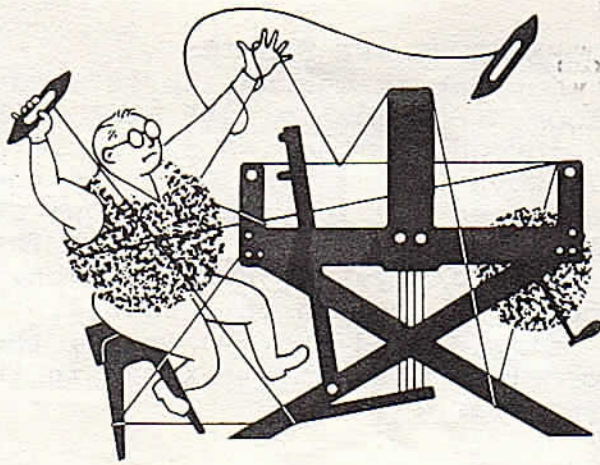
LENGTH AND WIDTH OF WARP AND WEFT:

We did a 12 yard warp, 40" wide, and
this was the loom set-up. When woven
and off the loom, we had 10½ yards of
finished fabric, and it came out to 38"
width.

WARP COST PER YARD, 40" wide -- \$3.16
 WEFT COST PER YARD----- 4.00
 =====
 FABRIC COST PER YARD, ----- \$ 7.16

TIE-UP DRAFT:

6	0	0	0		
5	0	0	0		
4	0	0		0	
3	0	0		0	
2	0		0	0	
1	0		0	0	
	1	2	3	4	5 6
					A B



drafts and designs

TM

a guide for 5 to 12 harness weaves

VOLUME 23, Number 5. January, 1981-

MODERN SWEDISH DESIGN:

Our sample this month was prompted by some of the beautiful fabrics from Sweden in shades of Reds that we see so often on the market. It is an 8 harness imitation damask that we have woven this sample in.

WARP:

Our warp is the 6 strand cotton floss in five different colors, which we have used in the warp. The colors are:

- B - #17, Bright Red
- M - # 23, Melrose
- C - # 18, Cerise
- O - # 16, Flamme Red
- A - # 15, Dark Red

WEFT:

In the weft, we used 4 colors in the weaving of this fabric. The colors used are: all 6 strand cotton floss.

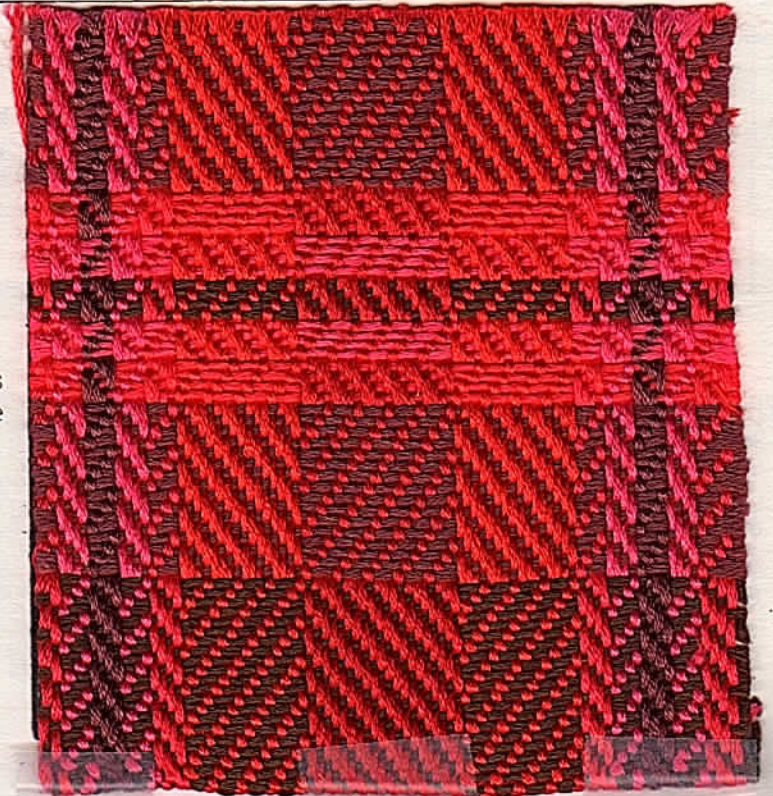
- # 23, Melrose
- # 18, Cerise
- # 17, Bright Red
- # 8, Brown

KEY TO COLORS IN THE WARP:

- B - # 17, Bright Red 6 strand cotton floss
- M - # 23, Melrose, 6 strand cotton floss
- C - # 18, Cerise, 6 strand cotton floss
- O - # 16, Flamme red, 6 strand cotton
- A - # 15, Dark Red, 6 strand cotton floss

THREADING DRAFT:

8		C		C		O	O	O	O		O	O	O	O
7		C		C		O	O	O	O		O	O	O	O
6		C		C		O	O	O	O		O	O	O	O
5		C		C		O	O	O	O		O	O	O	O
4	B		M		B		A	A	A	A	A			
3	B		M		B		A	A	A	A	A			
2	B		M		B		A	A	A	A	A			
1	B		M		B		A	A	A	A	A			



DRAFTS AND DESIGNS:

Published monthly (except July & Aug.)
by Robin & Russ Handweavers, 533 North
Adams St., McMinnville, Oregon 97128.

SUBSCRIPTIONS: \$10.00 per year. Canadian
is \$11.00 per year, and foreign subscrip-
tions are \$12.00 per year. Back issues or
single copies at \$1.25 each, plus 15¢ pp.
Yearly subscriptions start with the Sept.
issue. If you subscribe after September,
back issues from September on will be
mailed to you, unless you specify you want
your subscription to start with the next
September issue.

VOLUME 23, Number 5. January, 1981

REED USED:

A 12 dent reed was used, and it was
double sleyed, 2 per dent, 24 e.p.i.

TIE-UP DRAFT:

8	0	0	0	0	0					0	
7	0	0		0		0				0	
6	0		0	0			0			0	
5		0	0					0	0		
4	0				0	0	0			0	
3		0			0	0		0	0		
2			0		0		0	0		0	
1				0		0	0	0	0		
	1	2	3	4	5	6	7	8	A	B	
								9	10		

TREADLING SEQUENCE:

1. Treadle 1,2,3,4, 16 shots, melrose
 2. Treadle 5,6,7,8, 28 shots, brown
 3. Treadle 1,2,3,4, 16 shots, melrose
 4. Treadle 5,6,7,8, 4 shots, brt. red
 5. Treadle 1,2,3,4, 4 shots, Cerise
 6. Treadle 5,6,7,8, 4 shots, Brown
 7. Treadle 1,2,3,4, 4 shots, Cerise
 8. Treadle 5,6,7,8, 4 shots, brt. red
- End of one complete pattern repeat. Do
repeat over and over

COST OF THE THREADS USED:

All of the 35 colors that we have on
hand of the 6 strand cotton floss are
selling at \$8.00 per lb. About 8 of
them are on skeins, and the rest are
all being wound onto 1/2 lb. tubes.
This 6 strand cotton floss has 2080
yards per lb.

MORE ABOUT THE FABRIC:

Our fabric was set-up 40" wide on the
loom, or actually 40½" wide with the
4 threads selvage we put on both edges.
It wove down to 39" width on the loom,
and from our 14 yard warp, we received
12 yards and 27" of fabric. This is
12 and 3/4 yards. A firm, even, single
beat was used on this fabric.

Simple, and easy to weave, the only
problem, was about 6 knots in the 14
yard warp.

COST OF THE FABRIC:

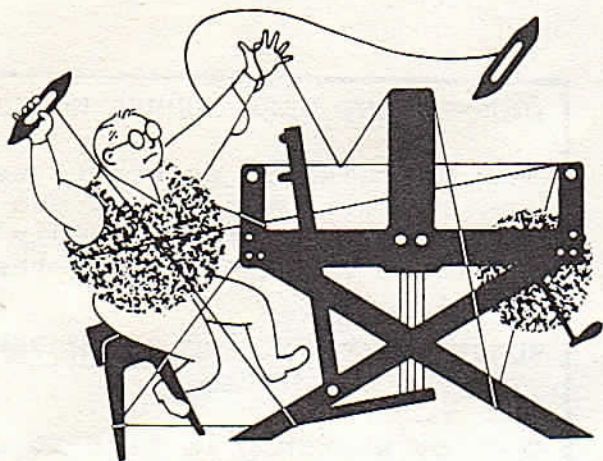
We used 6½ lbs. total of cotton floss
in the warp, and at \$8.00 per lb., our
total warp cost was \$52.00. Thus, our
warp cost was \$52.00, or the cost per
yard for the fabric is \$3.92.

In the weft, because of the nature of
the weave, it takes more weft than warp.

We used 8 lbs. of cotton floss in the
weft, so our weft cost for the total
was \$64.00, so the cost per yard comes
to exactly \$5.00 per yard.

WARP COST PER YARD, 40½" wide \$3.92
WEFT COST PER YARD, 39" wide 5.00
=====

Fabric cost per yard ----- \$8.92



drafts and designs

TM

a guide for 5 to 12 harness weaves

VOLUME 23, Number 6. February, 1981

ROSE-PETAL BROWN:

The sample this month is another 8 harness IMITATION DAMASK, and it is exactly the same draft we used last month, with a complete change of colors. It looks like an entirely different pattern, with this complete color change

WARP:

Our warp is the 6 strand cotton floss in 5 different colors. They are as follows:

- O -- color # 9, Rust
- A -- color # 8, Brown
- B -- color # 22, Old Fashioned Rose
- C -- color # 21, Antique Rose
- P -- color # 20, Pink

WEFT:

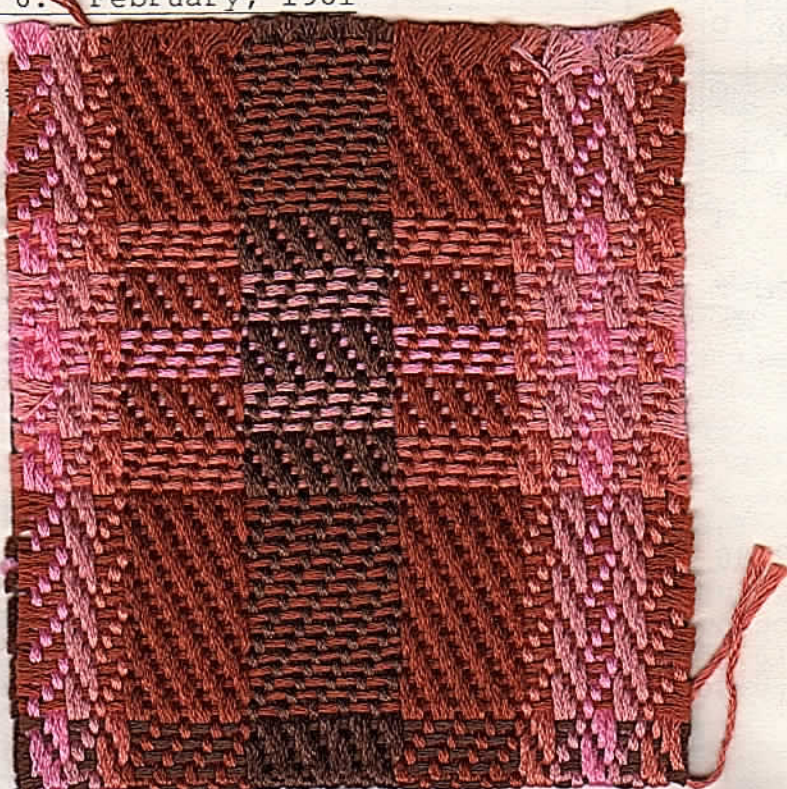
Our weft was the same five colors of the 6 strand cotton floss that we used in the warp.

REED USED:

A 12 dent reed was used, and it was double sleyed, 2 ends per dent, or 24 threads per inch.

THREADING DRAFT:

8	C	C	O	O	O	O		O	O	O	O
7		C	C	O	O	O	O		O	O	O
6		C	C	O	O	O	O		O	O	O
5		C	C	O	O	O	O		O	O	O
4	B	P	B					A	A	A	A
3	B	P	B					A	A	A	A
2	B	P	B					A	A	A	A
1	B	P	B					A	A	A	A



KEY TO COLORS IN THE WARP:

- O -- color # 9, Rust
- A -- color # 8, Brown
- B -- color # 22, Old Fashioned Rose
- C -- color # 21, Antique Rose
- P -- color # 20, Pink

DRAFTS AND DESIGNS:

Published monthly (except July & Aug.) by Robin & Russ Handweavers, 533 North Adams St., McMinnville, Oregon 97128.

SUBSCRIPTIONS: \$10.00 per year. Canadian is \$11.00 per year, and foreign subscriptions are \$12.00 per year. Back issues or single copies at \$1.25 each, plus 18¢ pp. Yearly subscriptions start with the Sept. issue. If you subscribe after Sept., back issues from September on will be mailed to you, unless you specify that you want your subscription to start with the next September issue.

VOLUME 23, Number 6, February, 1981:

TIE-UP DRAFT:

8	0	0	0	0	0					0
7	0	0		0		0			0	
6	0		0	0			0			0
5		0	0					0	0	
4	0				0	0	0			0
3		0			0	0		0	0	
2			0		0		0	0		0
1				0		0	0	0	0	
	1	2	3	4	5	6	7	8	9	10.
										A B

COST OF THE THREADS USED:

We have sold out 4 of the colors of the 35 we had in the 6 strand cotton floss. Most are colors used in this sample that are sold out are the three different roses we used, or 2 roses and we do have the pink.

This 6 strand cotton floss, has about 2080 yards per pound, and came to us on about 2½ lb. cones. However, we have been winding off 1/2 lb. tubes. About 10 of the colors are in skeins, and these are about 1/2 lb. or slightly more or less. We sell by weight only, and the price of this nice cotton is just \$8.00 per lb. while it lasts.

TREADLING SEQUENCE:

1. Treadle 1,2,3,4, 16 shots, Rust
2. Treadle 5,6,7,8, 20 shots, Brown
3. Treadle 1,2,3,4, 16 shots, Rust
4. Treadle 5,6,7,8, 4 shots, Old-fashioned Rose.
5. Treadle 1,2,3,4, 4 shots, Antique Rose.
6. Treadle 5,6,7,8, 4 shots, Pink
7. Treadle 1,2,3,4, 4 shots, Antuque Rose.
8. Treadle 5,6,7,8, 4 shots, Old-fashioned Rose.

End of one complete pattern repeat. Do repeat over and over as desired.

TWO---- ONE WEEK SUMMER WORKSHOPS

Jean Scorgie has agreed to teach two, one week workshops, one in July, July 13th through July 17th, and the other August 17th through August 21st.

SUBJECT: DESIGNING HANDWOVEN CLOTHING.

Cost of workshop is \$125.00 per week. All materials furnished. For more details, write to Robin & Russ Handweavers, 533 North Adams St., McMinnville, Ore. 97128.

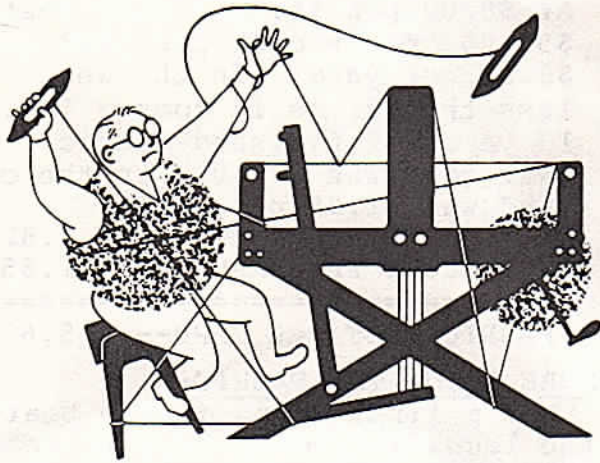
MORE ABOUT THIS FABRIC:

I furnished one of our 8 harness looms with this warp on it, to Oregon Museum of Science and Industry, for a sheep to shawl show. While the loom was on display there, members of our Portland Handweavers Guild came each day and wove on it. They finished about 6 yards of fabric. Then, I took it all set-up and assembled to the Northern California Handweavers Conference, and there I wove about 4 yards of fabric. Then, upon my return, on Memorial day, I sat down, and finished weaving this fabric on Memorial day, so it has quite a story behind it. I had no problems in my weaving at all, except with about one yard to go, I had about 7 or 8 knots appear in the warp. Even though this is a 6 fold or 6 strand cotton, I had no problems in the weaving of it to my great delight. I used a firm, even, double beat myself on it.

COST OF THE FABRIC:

We used 6½ lbs. total of cotton floss in the warp, and at \$8.00 per lb., our total warp cost was about \$52.00. In our 14 yard warp, I was able to weave almost 13 yards of finished fabric, except for about one inch. We used about 8 lbs. of cotton floss in the weft, because it is a 3:1 and a 1:3 twill variation and this packs in more than plain weave. Our weft cost was \$64.00 or the cost per yard was \$5.00 and the total cost per yard is \$8.92.

WARP COST PER YARD, 40½" wide - \$3.92
Weft cost per yard, 39" wide - 5.00
===== fabric cost per yard----- \$8.92



TM

drafts and designs

a guide for 5 to 12 harness weaves

VOLUME 23, Number 7, March, 1981

A CROSS FOR TRINITY LUTHERAN:

The fabric this month was designed for a new alter at Trinity Lutheran Church in McMinnville. The pastor wanted a lace background--surrounding a cross, and so this is the result. As it is very hard to obtain the right colors of linen for the church, we wove it out of the 6 strand cotton floss.

WARP:

Swedish lace is the pattern, and our warp was the 6 strand cotton floss in a color called # 7, AVOCADO DELIGHT.

WEFT:

Our weft is also the 6 strand cotton floss in a color called # 74, JEWEL GREEN.

REED USED:

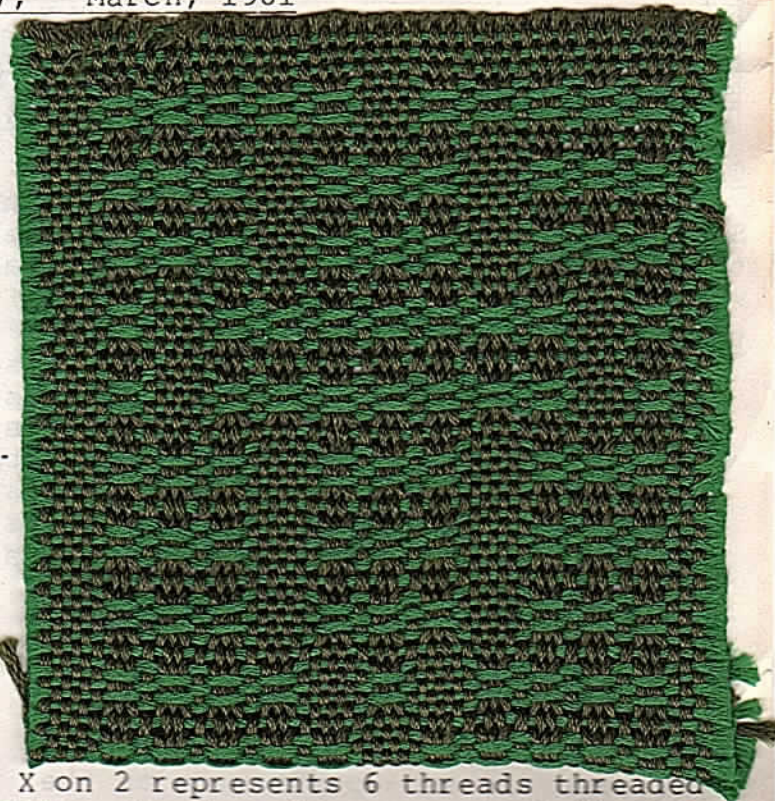
A 12 dent reed was used, and it was double-sleyed 2 ends per dent, or 24 threads per inch.

PROFILE DRAFT

PROFILE DRAFT:

8	X			X	
7		X			X
6			X		X
5		X		X	
4			X	X	
3				X	
2					XX

In the profile draft above, each X represents 6 threads or one block of the swedish lace. For instance,



an X on 2 represents 6 threads threaded 212121. An X on 7 represents 6 threads threaded 272721.

TIE-UP DRAFT:

8	0							0
7	0							0
6	0						0	
5	0				0			
4	0		0					
3	0	0						
2		0						
1	0	0	0	0	0	0	0	0
	1	2	3	4	5	6	7	8

DRAFTS AND DESIGNS:

Published monthly (except July & August) by Robin & Russ Handweavers, 533 No. Adams St., McMinnville, Oregon 97128.

SUBSCRIPTIONS: \$10.00 per year. Canadian is \$11.00 per year, and foreign subscriptions are \$12.00 per year. Back issues or single copies at \$1.25 ea. plus 18¢ postage. Yearly subscriptions start with the September issue. If you subscribe after September, back issues from September on will be mailed to you, unless you specify you want it to start with the next September issue.

VOLUME 23, Number 7, March, 1981

THREADING DRAFT:

8	X X																			X X	
7		X X																		X X	
6			X X																	X X	
5				X X																X X	
4					X X															X X	
3						X X															
2	X	X	X	X	X	X	X	X	X	X	X	X	X	X	X	X	X	X	X	X	X
1	X	X	X	X	X	X	X	X	X	X	X	X	X	X	X	X	X	X	X	X	X

14 oz. of the Avocado Delight color. At \$8.00 per lb. our warp cost was \$55.00 or the cost per yard was \$3.82 per yard. In the weft, it took less thread, as it took 3 lbs. to weave 13 yards of finished fabric. So, our weft cost was \$24.00, or the cost per yard was \$1.85 per yard.
WARP COST PER YARD \$ 3.82
WEFT COST PER YARD 1.85
=====

MORE ABOUT THE FABRIC:

Use a firm, even, double beat, and with the lace, I find it best to beat with the shed open, and change to the next shed before you beat the second time.

TREADLING SEQUENCE:

There are 6 shots in each block of the Swedish Lace Pattern. I will write the treadling in block sequence, rather than write each line..

treadle as follows:

- 2, 1, 2, 1, 2, 1, -- two times 12 thds
- 2, 3, 2, 3, 2, 1, -- one time 6 thds
- 2, 4, 2, 4, 2, 1, -- one time 6 thds
- 2, 5, 2, 5, 2, 1, -- three times 18 thds
- 2, 7, 2, 7, 2, 1, -- two times 12 thds
- 2, 5, 2, 5, 2, 1, -- two times 12 thds
- 2, 3, 2, 3, 2, 1, -- one time 6 thds

End of one complete pattern.. Repeat over and over from the beginning. There are 72 shots in each complete pattern repeat.

WIDTH AND LENGTH OF WARP:

Our warp was set-up 40" wide on the loom, and we did a 14 yard warp.

COST OF THREADS USED:

The 6 strand cotton floss is regularly \$19.75 per lb., but we purchased an odd lot of 4,000 lbs., in lots of 50 lbs. each of about 35 to 50 colors and lots of natural 9 strand cotton floss. We are able to sell this on 1/2 lb. tubes, or on skeins varying from 6 to 10 oz. of a color, at \$8.00 per lb.

COST OF THE FABRIC:

In our 14 yard warp, it took 6 lbs.

I was suprised, but there were quite a few knots in the cotton floss, and we did take them out in most cases, and replaced with a new thread.

Actually, if I could sit down and just weave, with all of the bobbins wound, I could probably weave a yard in about 1 bur one hour and 15 minutes to 1 hour and 30 minutes. It is fun to weave, and gives you a very rewarding glow to see it grow before you.

AN ALTERNATE TREADLING:

We experimented with several different treadlings before we achieved the one we used. There are some other nice treadlings, and this is one that we liked particularly well.

Treadle as follows:

- 2, 1, 2, 1, 2, 1, - two times
- 2, 3, 2, 3, 2, 1, - one time
- 2, 4, 2, 4, 2, 1, - one time
- 2, 5, 2, 5, 2, 1, - two times
- 2, 7, 2, 7, 2, 1, - two times
- 2, 5, 2, 5, 2, 1, - two times
- 2, 4, 2, 4, 2, 1, - one time
- 2, 3, 2, 3, 2, 1, - one time

End of a complete repeat, This makes a cross that can be be viewed from either lengthwise of the warp, or cross-wise of the warp.

Repeat the treadling sequence above over and over.

DRAFTS AND DESIGNS:

Published monthly (except July & August) by Robin & Russ Handweavers, 533 No. Adams St., McMinnville, Oregon 97128.

SUBSCRIPTIONS: \$10.00 per year. Canadian is \$11.00 per year, and foreign subscriptions are \$12.00 per year. Back issues or single copies at \$1.25 ea. plus 18¢ postage. Yearly subscriptions start with the September issue. If you subscribe after September, back issues from September on will be mailed to you, unless you specify you want it to start with the next September issue.

VOLUME 23, Number 9, May, 1981

TREADLING SEQUENCE:

The treadling sequence is quite a long one, so this time, I had better write it out. Each number in the following treadling sequence is the number of the treadle, and you treadle that treadle once for each time it is given in the treadling.

Treadle:

1. #8, Dark Avocado Green Cotton-doubled
2. #7-8-7-8-7, Celadon Green, doubled.
3. #4-5-6, yellow gold, 4 ends on a bobbin
4. #8-7-8-7-8, Celadon Green, doubled.
5. #7, Dk. Avocado Green cotton,doubled.
6. #8-7-8-7-8, Celadon Green, doubled.
7. #6-5-4, yellow gold, 4 ends on a bobbin
8. #7-8-7-8-7, Celadon Green, doubled.
9. #8, Dark Avocado Green--doubled.
10. #7-8-7, chartreuse 16/2, doubled
11. #4-5-6, yellow gold, 4 ends on a bobbin
12. #8-7, chartreuse 16/2, doubled
13. #6-5-4, yellow gold, 4 ends on a bobbin
14. #8-7-8, chartreuse 16/2, doubled
15. #7, Dark Avocado Green Cotton-doubled
16. #8-7-8-7-8, Celadon Green, doubled
17. #4-5-6, yellow gold, 4 ends on a bobbin
18. #7-8-7-8-7, Celadon Green, doubled
19. #8, Dark Avocado Green Cotton-doubled
20. #7-8-7-8-7, Celadon Green, doubled
21. #6-5-4, yellow gold, 4 ends on a bobbin
22. #8-7-8-7-8, Celadon Green, doubled
23. #7, Dark Avocado Green Cotton, doubled
24. #8-7-8, chartreuse 16/2 doubled
25. #4-5-6, yellow gold, 4 ends on a bobbin
26. #7-8, chartreuse 16/2 doubled
27. #6-5-4, yellow gold, 4 ends on a bobbin
28. #7-8-7, chartreuse 16/2 doubled

End of one complete treadling sequence.

Do repeat over and over as desired. Also, please note that there are 86 shots in each complete pattern repeat.

TIE-UP DRAFT:

Please note that we did not use treadles # 1, 2, and 3 in our treadling. Also, note that treadles # 7 and # 8 are also the A and B tabby treadles.

MORE ABOUT THE FABRIC:

First of all, I want to mention that we had these three 16/2 unmercerized soft twist cottons, and I was sort of afraid to use them singly in the warp. So, I thought a basket weave would bring two threads together, give more strength and enable us to use this thread. I wove a sample, found that it worked, and then in the weaving of the whole piece for this sample, we had absolutely no problems with broken threads.

I like the subtilness of these three colors, and found they combined well. The 16/2 comes on about 1 lb. cones, has 6700 yards per lb., and costs \$4.80 per lb.

This fabric reminds me of many of the Scandinavian weavings, and while it looks busy on the small sample, the large piece is very inviting.

A firm, even, double beat was used, and notice that all of the threads in the weft are doubled on the bobbin, except the 16/2 Yellow Gold. It is wound with 4 ends to act as one.

COST OF THE THREADS USED:

The dark avocado green 6 strand floss has 2080 yards per lb., and is \$8.00 per lb. The other three threads are Celadon Green, Yellow Gold, and Chartreuse 16/2 cotton. It sells for \$4.80 per lb.

COST OF THE FABRIC:

In the warp, we used 1 lb. 6 oz. of Celadon Green, 9 oz. of Yellow Gold, & 11 oz. of Chartreuse. Thus, the total cost was 2 lbs. 10 oz. at \$4.80 per lb, or \$12.60. Also, in the warp, we used 1 lb. 4 oz. of cotton floss @ 8.00 a lb., or \$10.00

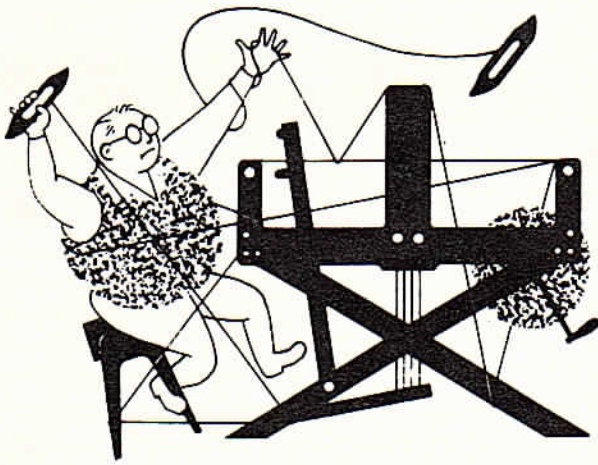
So, our total warp cost for 43" width was \$22.60 or \$1.62 per yard.

In the weft, we used 4 lbs. 10 oz. of the 3 colors of 16/2, and 11 oz. of the cotton floss, so our total weft cost was \$27.20. We had 13 yards of finished fabric, so our cost per yard was \$2.10 per yard.

WARP COST PER YARD, 43" -	\$1.62
WEFT COST PER YARD-----	2.10
=====	
fabric cost per yard ----	\$3.72

P.S. ONE MORE NOTE ABOUT FABRIC.

We put 6 threads of 10/3 cotton on each selvage edge, to make sure the 16/2 cotton did not fray and break. It solved the problem, and we had no breakage of selvage threads after we did this.



drafts and designs



a guide for 5 to 12 harness weaves

VOLUME 23, Number 10, June 1981



GREEN-GOLD:

This 8 harness twill variation is an excellent upholstery fabric. It should be washed and pressed before making up into upholstery.

WARP THREADS USED:

Two colors of 10/2 dry spun linen from Scotland were used in the warp. They were as follows:
 X-- 10/2 Straw Gold Linen
 O-- 10/2 Parakeet Yellow

WEFT THREADS USED:

The same 2 threads that were used in the warp, were also used in the weft. In the weft, they were both wound together on the same bobbin.

REED USED:

An 8 dent reed was used, and it was double-sleyed, 2 ends per dent, or 16 threads per inch.

TREADLING SEQUENCE:

There are 32 shots in one complete pattern repeat. They are as follows:

1. Treadle 1, 2, 3, 4, 4 times until you have 16 shots.
2. Treadle 5, 6, 7, 8, 4 times until you have 16 shots.

REPEAT OVER AND OVER AS DESIRED

THREADING DRAFT:

8	0	0	0	0	0	0	0	0	0	X	X	X	X
7	0	0	0	0	0	0	0	0	0	X	X	X	X
6	0	0	0	0	0	0	0	0	0	X	X	X	X
5	0	0	0	0	0	0	0	0	0	X	X	X	X
4		0	0	0	0	0	0		X	X	X	X	X
3		0	0	0	0	0	0		X	X	X	X	X
2		0	0	0	0	0	0		X	X	X	X	X
1		0	0	0	0	0	0		X	X	X	X	X

DRAFTS AND DESIGNS:

Published monthly (except July & August) by Robin & Russ Handweavers, 533 No. Adams St., McMinnville, Oregon 97128.

SUBSCRIPTIONS: \$10.00 per year. Canadian is \$11.00 per year, and foreign subscriptions are \$12.00 per year. Back issues or single copies at \$1.25 each, plus 20¢ postage. Yearly subscriptions start with the September issue. If you subscribe after September, back issues from September on will be mailed to you, unless you specify you want it to start with the next September issue.

VOLUME 23, Number 10, June, 1981

CORRECT TIE-UP DRAFT:

8	0	0	0	0	0	0	0	0	0
7	0	0	0	0	0	0	0	0	0
6	0	0	0	0	0	0	0	0	0
5	0	0	0	0	0	0	0	0	0
4	0	0	0	0	0	0	0	0	0
3	0	0	0	0	0	0	0	0	0
2	0	0	0	0	0	0	0	0	0
1	0	0	0	0	0	0	0	0	0
	1	2	3	4	5	6	7	8	A B
								9	10

INCORRECT TIE-UP WHICH WAS USED ON THIS SAMPLE:

8	0	0	0	0	0	0	0	0	0
7	0	0	0	0	0	0	0	0	0
6	0	0	0	0	0	0	0	0	0
5	0	0	0	0	0	0	0	0	0
4	0	0	0	0	0	0	0	0	0
3	0	0	0	0	0	0	0	0	0
2	0	0	0	0	0	0	0	0	0
1	0	0	0	0	0	0	0	0	0
	1	2	3	4	5	6	7	8	A B
								9	10

MORE ABOUT THE FABRIC:

First of all, let me explain that our weaver used a slightly incorrect tie-up, and I have given the correct one. If you check your sample, there is a float thread on the back on one block. This would not have happened if the correct tie-up had been used. I have given you the correct tie-up, and you will be pleased with the slight difference.

Also, it is important, that you use a quite firm, even, double beat, beating with the shed open, changing to the next shed and then beating again before you throw the next shuttle. This will give you a firm fabric. And, when you change from one block to another in the tread-

ling, be sure to use a firm beat on the last shot of one block, and first shot of the next block.

COST OF THE THREADS USED:

We are still selling these 10/2 linens at the old price of \$8.80 per lb. When they are sold out, we will not stock them again, as our cost, on these, delivered to us would be \$15.00 per lb., and we would have to put a mark-up on top of that, so we have about decided that we will not try to stock these, as we have to have 100 lbs. of a color dyed, and it would just be too expensive.

It comes on about 1 lb. tubes, and has 1500 yards per lb.

COST OF THE FABRIC:

In our 14 yard warp, 40" wide, we used 6 lbs. of linen in the warp, and at \$8.80 per lb., our warp cost was \$52.80. This makes the cost per yard come to \$3.78 per yard.

In the weft, it takes approximately the same amount, so our weft cost per yard comes to \$4.20, as we were able to get only about 12 yards out of the 14 yard warp.

WARP COST PER YARD, 40" wide	\$3.78
WEFT COST PER YARD	4.20
=====	
FABRIC COST PER YARD	\$7.98

**AUSTRALIA
and
NEW ZEALAND**

**A 25-day
Weaving and Spinning
and Sightseeing Tour**

**Leaving June 23, 1982.
Returning July 16, 1982.**

Approximately 12 to 15 studio, mill, and shop visits to hand-weavers, spinners, and a visit to a sheep farm and dinner at the farm.

**Deluxe. first-class hotels.
A private motor coach for our visits and sight-seeing.**

Trip starts from Los Angeles, California.

For more details and a day-by-day itinerary, write to:

**Robin & Russ Handweavers
533 North Adams St.
McMinnville, OR 97128**