

# drafts and designs

TM

## a guide for 5 to 12 harness weaves

VOLUME 24, Number

### CRYSTAL PALACE:

Never seeing the famous Crystal Palace in person, but hearing much about it in England, this semi-sheer fabric with the bright sheen suggests to me the famous building in England. Looking through the glass walls, you see all shades of color, such as our lavender, pink, beige and gold in our sample.

### TIE-UP DRAFT:

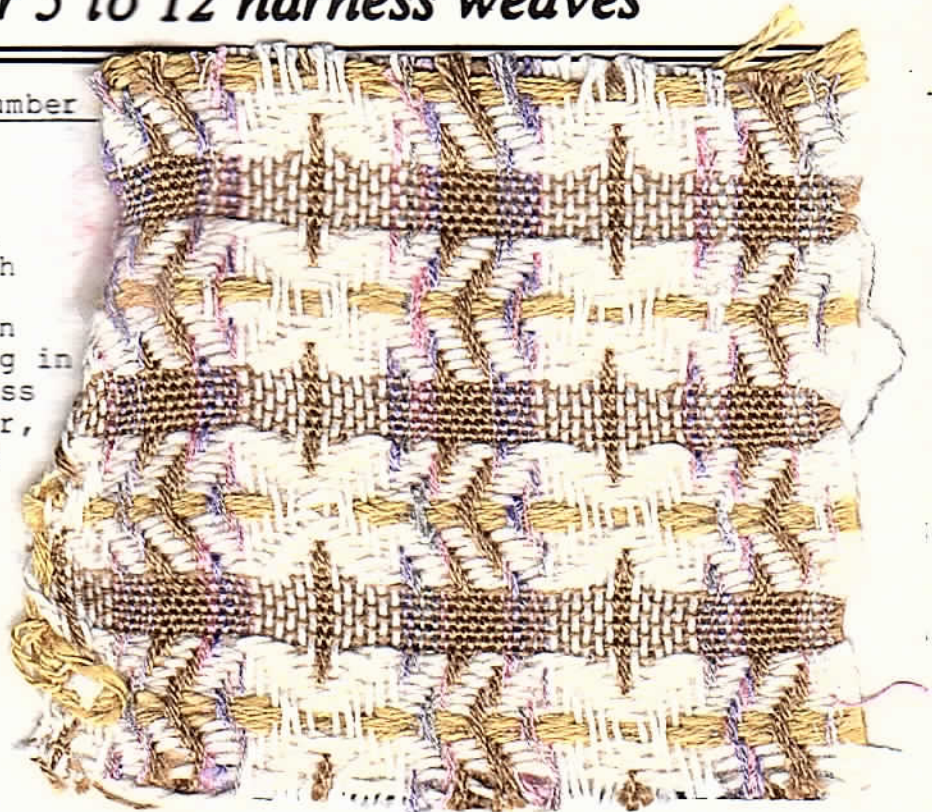
8				0	0	0	0	0		
7				0	0	0	0		0	
6			0	0	0	0				0
5		0	0	0	0					0
4	0	0	0	0						0
3	0	0	0					0	0	
2	0	0					0	0		0
1	0					0	0	0	0	
	1	2	3	4	5	6	7	8	9	10
							A	B		

### KEY TO COLORS IN THE WARP:

- T - 10/2 Spun Rayon, Tan
- X - 10/3 White, unmercerized cotton
- O - 15/2 SPACE-DYED, Variegated spun rayon.

### THREADING DRAFT:

8				O			T			O				T
7				O			T			O			T	T
6				O			T			O			X	X
5				O			T			O			X	X
4				O			T			O			X	X
3				O			T			O			X	X
2				O			T			O			X	X
1	O						T			O			X	X



### WARP THREADS USED:

- Three different threads were used in the warp, and they are, as follows.
- T - 10/2 spun rayon, tan, with 4200 yards per lb.
  - X - 10/2 Bleached White, unmercerized cotton, 2800 yds. per lb.
  - O - 15/2 space-dyed rayon, 2 ply for both warp and weft. It has 6300 yards per lb.



### DRAFTS AND DESIGNS:

Published monthly (except July & August)  
by Robin & Russ Handweavers, 533 No.  
Adams St., McMinnville, Oregon 97128.

SUBSCRIPTIONS: \$10.00 per year. Canadian is \$11.00 per year, and foreign subscriptions are \$12.00 per year.

Back issues or single copies at \$1.25 each, plus 20¢ postage. Yearly subscriptions start with the September issue. If you subscribe after September, back issues from September on will be mailed to you, unless you specify you want it to start with the next September issue.

VOLUME 24, Number 1, September, 1981

### WEFT THREADS USED:

There are three different threads used in the weft. They are as follows:

1. The shiny, glossy, natural white one is a nylon-rayon blend in 2 ply.
2. The gold color in the center of the white ribs is a cotton-rayon blend, which we wound, 3 ends together on one bobbin, to give us more weight.
3. The third thread in the weft is the 10/2 spun rayon color in the Tan.

### REED USED:

We used a 15 dent reed, and we had a special slewing of the reed. I will start on the right side of the pattern, and reading right to left, give you the slewing.

- A. 1st 6 threads of 10/3 white cotton were sleyed one end per dent.
- B. 3 threads of 10/2 tan, all in one dent.
- C. next 6 threads of 10/3 white cotton were sleyed one end per dent.
- D. The last 24 threads of space-dyed, pink rayon, and the 10/2 tan rayon are all sleyed 2 ends per dent.

Please note that we used 25 dents in the reed to sley one complete pattern repeat.

### MORE ABOUT THE THREADS USED:

In the warp is a 15/2 spun rayon flake, space-dyed, and it is a blend of natural, pink, lavender. It comes on about 14 to 18 oz. cones, and is \$6.00 per lb.

The 10/3 white, unmercerized cotton is from an Embroidery Mill, and is a top quality cotton. It has 2800 yards per lb., and is \$5.60 per lb.

The 10/2 Tan, spun rayon just came in a short while ago. We have 100 lbs., and it has 4200 yards per lb., and is \$4.00 per lb.

In the weft, we used three threads, and two of them are different than the warp. One is a 2 ply, heavier spun nylon & rayon

blend on about 1 lb. tubes and it is \$4.00 per lb. The yellow-gold flake yarn is a cotton & rayon blend, comes on about 3/4 to 1 lb. cones, and is \$4.00 per lb. The 15/2 spun rayon flake yarn has 5500 yards per lb.

### COST OF THE FABRIC:

In the warp, we used 3 threads. We used 14 oz. of Tan 10/2 spun rayon; and 1 lb. 11 oz. of 10/3 white cotton, and 15 oz. of 15/2 spun rayon space-dyed yarn. So our total cost for the 14 yard warp, 40" wide cost us \$18.58 or the cost per yard is \$1.33 per yard.

In the weft, we used 1 lb. 4 1/2 oz. of the yellow gold flake at \$4.00 per lb. We used 4 lbs. 4 oz. of the 2 ply natural-white rayon-nylon blend. We used 10 oz. of the 10/2 spun rayon tan.

So, our total weft cost for 13 yards comes to \$24.76 or the cost per yard comes to \$1.95 per yard.

WARP COST PER YARD, 40" wide-- \$1.35

WEFT COST PER YARD, 13 yards-- 1.91

=====

Fabric cost per yard ----- \$3.26

### MORE ABOUT THE FABRIC:

Believe it or not, this one was very easy to weave. One of our new employees wanted to learn how to weave, and this was her first weaving, with your editor's supervision.

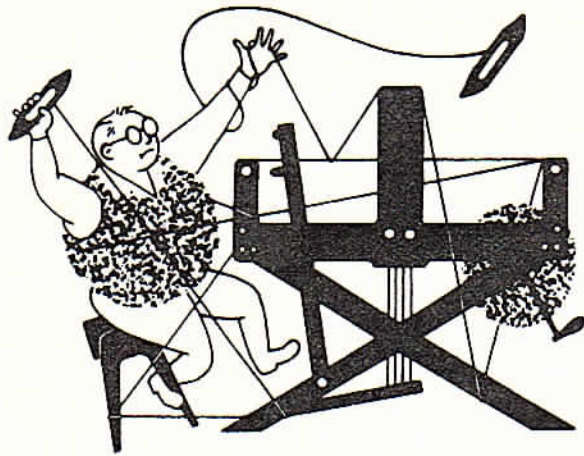
She used a firm, even, double beat, and beat with the shed open at all times. She threw the shuttle, beat with the shed open, changed to the next shed, and then beat again.

We had a 10/3 white unmercerized cotton sl cotton selvage on both edges, and it worked extremely well.

I felt that the special slewing of the reed added greatly to this fabric, and as a result, we are doing more experimenting with this technique.

My suggestion for the use of this fabric was as curtains or as borders in drapes. I designed it primarily with curtains in mind. However, I do think it would make nice skirt yardage also, with the borders spaced differently, and even with the borders running up and down, rather than around the bottom of skirt.





# drafts and designs

TM

## a guide for 5 to 12 harness weaves

VOLUME 24, Number 4, December 1981

### BEIDERWAND, Number TWO:

This is our second experiment with this German weaving technique. The front is correct, but note that we have a float thread on the back. We will tell you how to eliminate this as we give you the treadling. This technique is excellent for bed-spreads, upholstery, and other such fabrics.

### THREADING DRAFT:

8				X	X		X	X			
7				X	X		X	X			
6			X	X					X	X	
5			X	X				X	X		
4	X	X								X	X
3	X	X								X	X
2	X			X				X			
1		X			X				X		

### TIE-UP DRAFT:

8	0		0					0	0		
7			0					0	0		0
6	0		0	0	0						
5			0	0	0						0
4	0				0	0	0				
3					0	0	0				0
2		0									
1										0	
	X	A	1	2	3	4	5	6	B	Y	

### WARP:

Our warp is the 20/2 egyptian cotton in color called "FAST GOLD."



### WEFT:

In the weft, we used three threads. Two of them are the same size, and have names of Grape Heather and Oak Bark Brown heather. These two threads are blended yarns of 32% wool, 38% acrylic, and 30% polyester. The other thread which was the tabby and main background thread was an 8/2 Worsted-Nylon blend. It is 70% wool and 30% nylon, and is extremely strong and durable.

### REED USED:

A 15 dent reed was used with the size 20/2 egyptian cotton warp, and it was double sleyed, 2 ends per dent, 30 epi.



## DRAFTS AND DESIGNS:

Published monthly (except July & Aug. by Robin & Russ Handweavers, 533 North Adams St., McMinnville, Oregon 97128.

SUBSCRIPTIONS: \$10.00 per year. Canadian subscriptions are \$11.00 per year, and foreign are \$12.00 per year. Back issues are \$1.25 each, plus 20¢ postage. All Yearly subscriptions start with the September issue. If you subscribe after September, back issues from September on will be mailed to you.

VOLUME 24, Number 4. December, 1981

## TREADLING SEQUENCE:

Please note that the treadling sequence for the top surface of the fabric is correct. However, to make easier to cut, we decided to put some plain weave area or tabby in between each pattern repeat, to make a little more easy to cut and use for samples. However, we neglected the tie-down threads in this unit weave (every 5th thread is a tie-down thread), so we did not get them woven in. However, the treadling that we will give you will insure that these tie-down threads are woven in, and you will not have any long floats as we have on the back of this fabric in our plain weave or tabby area. So, remember our treadling does correct this.

There are 5 units of treadling in this pattern. First, I will give you the 5 units, the 2 treadle combinations for tabby, and then I will give you the complete pattern sequence.

A Unit: Treadle X -- 8/2 granite  
Treadle A + 1 - grape heather  
Treadle Y -- 8/2 granite  
Treadle B + 1 - grape heather  
Repeat 2 times.

B unit: Treadle X -- 8/2 granite  
Treadle A + 2 - oak bark  
Treadle Y -- 8/2 granite  
Treadle B + 2 - oak bark  
Repeat 2 times.

C Unit: Treadle X -- 8/2 granite  
Treadle A + 3 - oak bark  
Treadle Y -- 8/2 granite  
Treadle B + 3 - oak bark  
Repeat 2 times.

D Unit: Treadle X -- 8/2 granite  
Treadle A + 4 - grape heather  
Treadle Y -- 8/2 granite  
Treadle B + 4 - grape heather  
Repeat 2 times.

E Unit: Treadle X -- 8/2 granite  
Treadle A + 5 - oak bark  
Treadle Y -- 8/2 granite  
Treadle B + 5 - oak bark  
Repeat 2 times.

The two combinations for the plain weave area in between each pattern repeat are X + A for one tabby and Y + B for the 2nd tabby.

The treadle sequence for one complete pattern is A, B, C, D, E, D, C, B, & A. Then you have 10 shots of XA together and YB together. YOU have just 10 tabby and XA is one and YB is the second, etc.

## MORE ABOUT BEIDERWAND:

This weave is a double-faced, rather than a double-layered construction. It is not a double weave. It is a unit weave or block weave, and may easily be written on profile drafts. The pattern is formed by floats of free weft threads held fast by a binding thread. In this case, every fifth thread is a tie-down thread and in our draft, they are on harnesses 1 or 2.

Beiderwand is a block pattern, but is different from summer and winter. Each block of Beiderwand requires 2 harnesses and 2 treadles. And besides this, the front 2 harnesses of your loom have to be reserved for binding threads. So, you need 6 harnesses for 2 blocks, or 8 harnesses for 3 blocks as you see on our sample.

This weave is a completely reversible weave, and you can use either side of the fabric. However, you note our error on the tabby on the back side. That will not happen if you use the correct treadle sequence as we have given it for tabby.

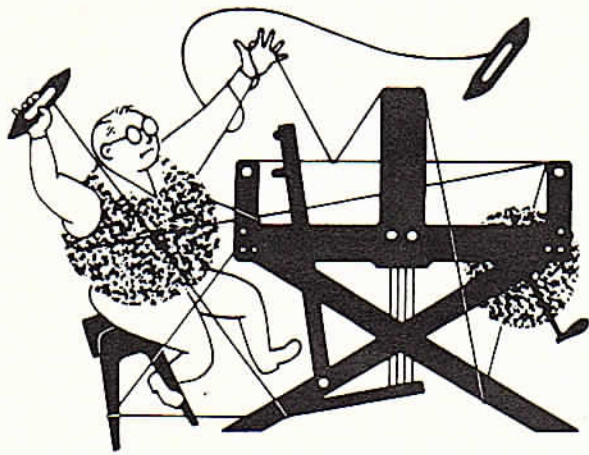
## COST OF THE THREADS USED:

Our fast gold, 20/2 egyptian cotton comes on 1/2 lb. tubes, has 4200 yards per tube, and is \$6.50 per tube. This thread comes in about 95 colors, and it is both mercerized and gassed.

The 8/2 granite is a worsted spun, wool and nylon blend. We have about 12 colors in stock and have been able to stock these for about 2 years.

The two colors in the blend yarn of wool, acrylic and polyester, comes in 4 colors. It has about 1200 to 1250 yards per lb., and is \$8.00 per lb., and came to us on about 3 to 4 lb. cones. We can wind off 1/2 lb. tubes for you.





# drafts and designs

TM

## *a guide for 5 to 12 harness weaves*

VOLUME 24, Number 6, February, 1982.

### DAFFODILS IN SPRING:

This six harness, warp-faced weave was an interesting one to do. It is one of the Swedish favorite techniques, that they use in many of their curtains or drapes.

### WARP THREADS USED:

There were two sizes of linen thread used in the warp. The spring green and summer green were 10/2 linen, dry spun. The other three colors were Swiss 6/2 wet spun linen in gold-gold, rosie beige, and lemon.

### WEFT THREADS USED:

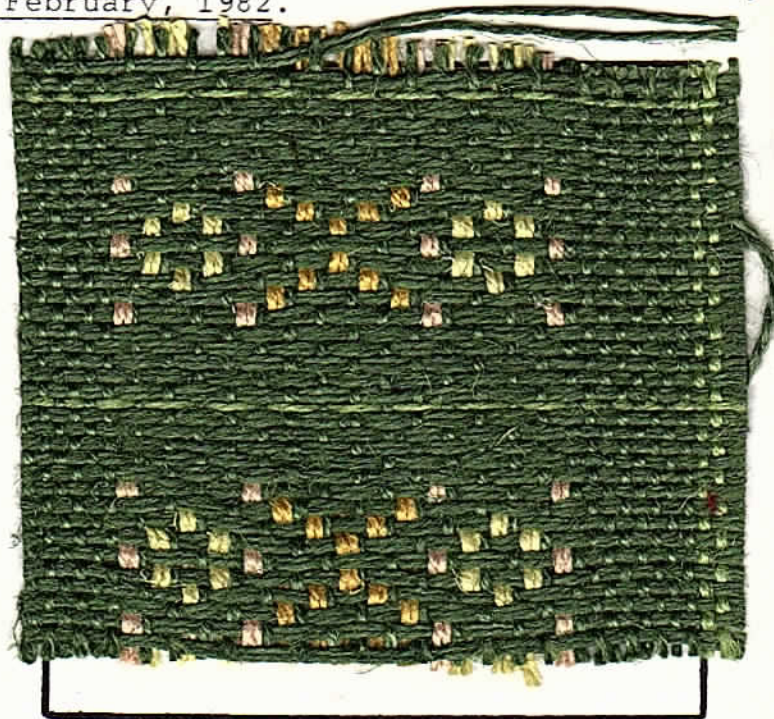
There were just two threads used in the weft, and both were the 10/2 in the spring green for the block outline thread and the 10/2 summer green for the main background thread.

### REED USED:

A 12 dent reed was used, and all of the spring green and summer green were one end per dent, and all of the colors were two ends per dent. I will give it in a different way also, to make sure you understand the slewing of the reed.

1. one per dent with summer green, 8 dents.
2. alternate 2 color, 1 summer green for 29 dents
3. one per dent with summer green, 8 dents.
4. one per dent for 2 dents, with spring green.

Repeat over and over.



### TREADLING SEQUENCE:

In our weft, we just used the spring green singly, and the summer green doubled on the bobbin throughout the weaving. Here is the treadle sequence that we used. Note that there are 20 shots in each complete pattern repeat.

1. Treadle A,B,A,B,A, with summer green, doubled on the bobbin.
2. Treadle 4,3,2,1,4,1,2,3,4, with the summer green, 2 ends on the bobbin.
3. Treadle A,B ,A,B,A, with summer green, 2 endds on one bobbin.
4. Treadle B, with one end of spring green on the bobbin.

REPEAT OVER AND OVER AS DESIRED.



DRAFTS & DESIGNS:

Published monthly (except July & August) by Robin & Russ Handweavers, 533 N. Adams St., McMinnville, Oregon 97128.

SUBSCRIPTIONS: \$10.00 per year. Canadian is \$11.00 per year, and foreign subscriptions are \$12.00 per year. Back issues or single copies at \$1.25 each, plus 20¢ pp. Yearly subscriptions start with the September issue. If you subscribe after September, back issues from September on will be mailed to you.

VOLUME 24, Number 6, February, 1982.

THREADING DRAFT:

6	D	X	X	X	X	X	X	X	X	X	X	X	X	X	X	X	X
5	X	X	X	X	X	X	X	X	X	X	X	X	X	X	X	X	X
4	AA				AA				AA				AA				
3	BB						BB										
2	CC				BB				CC								
1	CC		CC		BB				CC		CC						

TIE-UP DRAFT:

6	O		O		O				
5		O		O		O			
4				O					
3			O						
2		O							
1	O								
	1	2	3	4	A	B			
					5	6			

KEY TO COLORS IN THE WARP:

Please note that there are 5 different colors in the warp as follows:  
A-- 6/2 Rosie Beige Linen  
B-- 6/2 Gold, Gold Linen  
C-- 6/2 Lemon Linen  
D-- 10/2 Spring Green Linen  
X-- 10/2 Summer Green Linen

C.-Lemon, --used 1 lb. 7 oz.  
D.-Spring Green used 4 oz.  
E.-Summer Green used 3 lbs. 5 oz.  
Our total warp cost for 14 yards was \$66.75, and so the cost per yard was \$4.77 per yard.

MORE ABOUT THE THREADS USED:

The 10/2 dry spun linen is from Scotland. It has 1500 yards per lb., and it comes on about 1 lb. tubes. We are selling it while it lasts, at the regular price of \$8.80 per lb. We will not be stocking it after we sell out all of the colors.

In the weft, we used a total of 8 lbs. 6½ oz. of summer green, and 4½ oz. of the spring green. Our total weft cost was \$76.45, and from this we had 13 yards of finished fabric. The weft cost per yard was \$5.88 per yard.

The 6/2 wet spun linen is from Switzerland. It has 900 yards per lb., and it too is on about 1 lb. tubes. It is \$9.60 per lb. The same applies to it. We will sell it at this price while it lasts, but will not restock when sold out as the price of the dyeing has escalated so much, that it costs about \$4.00 to \$6.00 per lb. to dye it, depending upon the color.

Warp cost per yard, 40" wide -- \$4.77  
Weft cost per yard, 38" wide -- 5.88  
===== Fabric cost per yard-----\$10.65

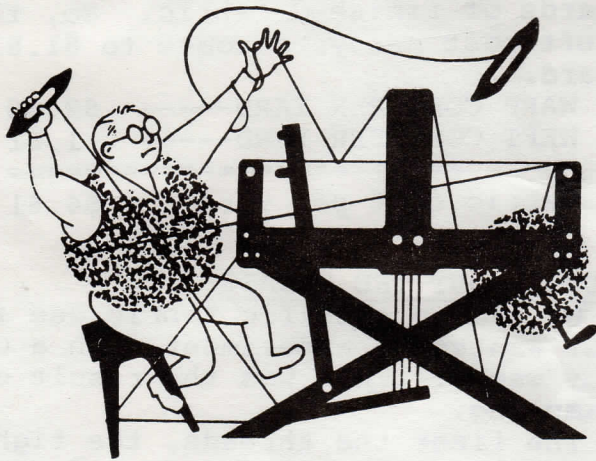
COST OF THE FABRIC:

In the warp, we used the following listed linen in our 14 yard warp, which was 40" wide.  
A--Rose Beige--used 1 lb. 1 oz.  
B--Gold, Gold--used 1 lb. 3 oz.

MORE ABOUT THE FABRIC:

We thought it might be hard to weave and the float threads might give us some tension problems towards the end of the warp. They never did.  
Hardest part was winding the linen in summer green, double on the bobbin. We used a shuttle, one of our own make, which takes a 7" plastic bobbin, and we wound it about 1/2 full the entire length, and then we mounded up the center 5" of the bobbin, until it was slightly convex. Got lots of thread on this way, with no problems.  
Be sure to use a firm, even, tight, double beat. This is especially true for linen.





# drafts and designs



## a guide for 5 to 12 harness weaves

VOLUME 24, Number 7, April, 1982

### SCULPTURED SAND-DUNES:

Our sample this month is a Bedford Cord variation. This is about the same as a Corduroy, which normally, is a cotton pile fabric with vertical ribs.

### TIE-UP DRAFT:

8		0	0	0		0	0	0	
7	0		0	0	0		0	0	
6	0	0		0	0	0		0	
5	0	0	0		0	0	0		
4	0	0	0	0				0	0
3	0	0			0	0	0	0	
2	0		0		0		0		
1		0		0		0		0	
	1	2	3	4	5	6	7	8	

### THREADING DRAFT:

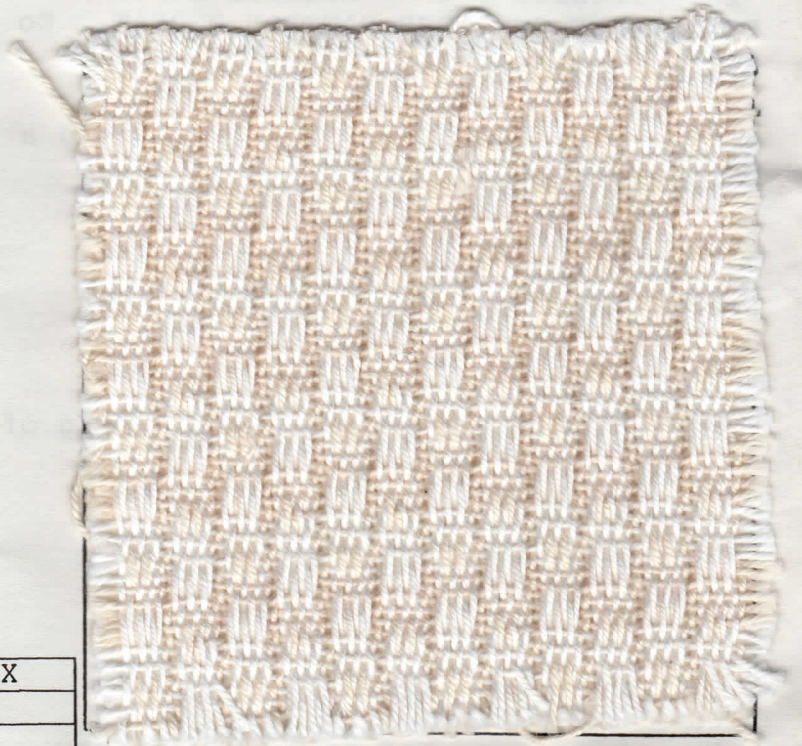
8						X		X		X
7						X		X		X
6			X		X			X		
5		X		X		X				
4							0		0	
3				0		0				
2	0							0		
1	0								0	

### KEY TO COLORS IN THE WARP:

- X -- 10/3 White, unmercerized cotton
- 0 -- 10/3 Natural, unmercerized cotton

### WARP:

Our warp is the natural 10/3, unmercerized cotton, and also the 10/3 bleached white, unmercerized cotton.



### WEFT:

The same 2 colors that were used in the warp are also used in the weft.

### TREADLING SEQUENCE:

Our treadling sequence is a little different than usual, but we did try to make it as close to a walking treadling as possible. Here is the sequence that we used.

1. Treadle # 1 -- white 10/3
2. Treadle # 2 -- white 10/3
3. Treadle # 3 -- white 10/3
4. Treadle # 4 -- white 10/3
5. Treadle # 5 -- white 10/3
6. Treadle # 6 -- white 10/3



### DRAFTS AND DESIGNS:

Published monthly (except July & Aug.) by Robin & Russ Handweavers, 533 North Adams St., McMinnville, Oregon 97128.

SUBSCRIPTIONS: \$10.00 per year. Canadian is \$11.00 per year, and foreign subscriptions are \$12.00 per year. Back issues or single copies at \$1.25 each, plus 15¢ pp. Yearly subscriptions start with the Sept. issue. If you subscribe after September, back issues from September on will be mailed to you, unless you specify you want your subscription to start with the next September issue.

VOLUME 24, Number 7, April, 1982

7. Treadle # 7 -- natural 10/3
  8. Treadle # 8 -- natural 10/3
  9. Treadle # 3 -- natural 10/3
  10. Treadle # 4 -- natural 10/3
  11. Treadle # 5 -- natural 10/3
  12. Treadle # 6 -- natural 10/3
- END OF ONE COMPLETE PATTERN REPEAT. Do repeat over and over as desired.

### REED USED:

A 10 dent reed was used, and we had a special sleying of the reed. It was sleyed as follows:

- 4 threads in the first dent
- 4 threads in the second dent
- 2 threads in the third dent
- 4 threads in the fourth dent
- 4 threads in the fifth dent
- 2 threads in the sixth dent

Repeat over and over in the sleying of the reed.

### COST OF THE THREADS USED:

WE purchased a limited amount of the 10/3 natural (150 lbs.) and 500 lbs. of the 10/3 white.

The 10/3 natural came on about 2-1/2 lb. cones, has 2800 yards per pound, and is \$5.60 per lb.

The white was used in an embroidery mill and is all on about 6 oz. tubes. It has the same 2800 yards per lb., and is \$5.60 per lb.

### COST OF THE FABRIC:

We had a 14 yard warp, 39" wide on the loom. It took almost 7 lbs. of the two threads for the warp, so our total warp cost for 14 yards, 39" wide was \$39.20, or the cost per yard was \$2.80 per yard.

In the weft, we used 1 lb. 15 oz. of each of the natural and white, or 3 lbs. 14 oz. in all. So, our weft cost was \$21.70, and we received 12

yards of finished fabric. So, the weft cost per yard comes to \$1.81 per yard.

WARP COST PER YARD-----	\$2.80
WEFT COST PER YARD-----	1.81
=====	
Fabric cost per yard	\$4.61

### MORE ABOUT THE FABRIC:

We had no specific fabric use in mind but wanted to experiment with a Corduroy weave. This was the result of our sampling.

The finer the threads, the tighter it would pack, and the more interesting it should be. Also, you can use all different types of thread in the weft, to create these interesting cord effects.

A firm, even, double beat was used.

There really were no problems in the weaving of this fabric. The 10/3 cotton is one of the nicest warp and weft threads we have ever used, and I have been weaving for almost 35 years.

We thought this pattern would make a most interesting couch cover, or it should make an outstanding bedspread. This fabric took up quite a bit from one selvage to the other because of the rib, and was about 37" wide when off the loom, from a 39 1/2" wide warp. We had a 39" warp, and added 8 selvage threads on both edges, so it was approximately 39-1/2" wide on the loom.

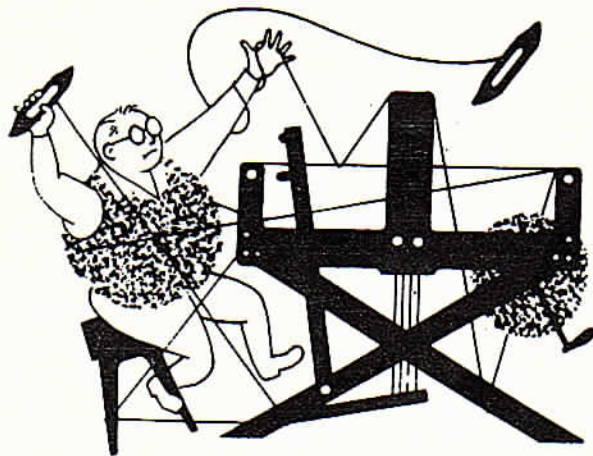
Once again, I can't emphasize how much we have enjoyed this 10/3 natural and white unmercerized cotton for both warp and weft. I'm sorry to see that we only have about 40 lbs. of the natural left, but we do have about 300 lbs. of the white.

This pattern is fun to experiment with, and in our sample warp, we experimented with 2 colors in the warp other than natural and white, and liked some of the effects of the darker colors with the natural or white.

On one of our samples, one rib was flat, and the next one raised, and this alternated in our sample. I think I liked this one the best of all of the samples. We used 6 strand floss in 2 colors in the warp and made several samples, and liked it very much.

Hope you will put a little extra warp on, so you can experiment also.





# drafts and designs

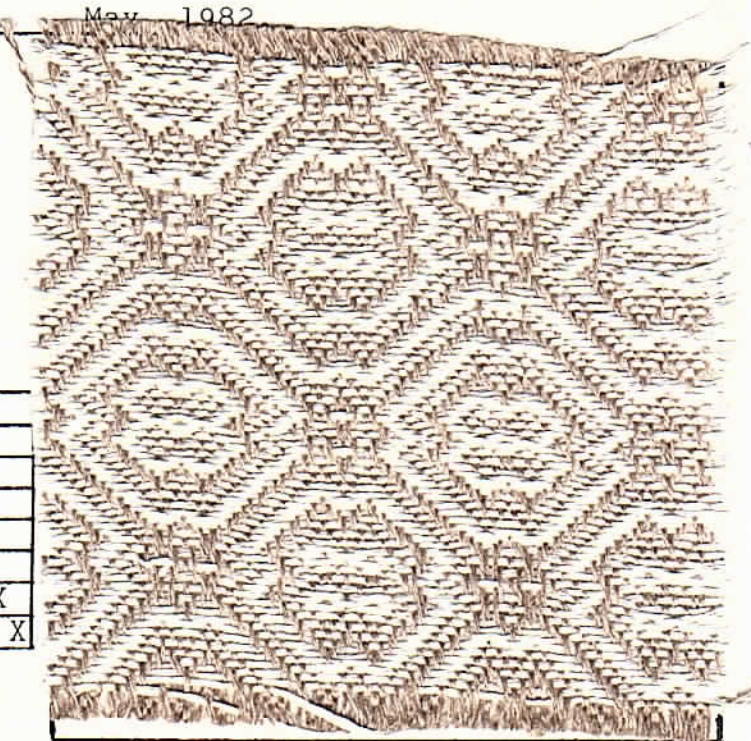


*a guide for 5 to 12 harness weaves*

VOLUME 24, Number 9, May 1982

**MARCEE'S MAGIC:**

This is a fascinating 8 harness weave in a more or less point twill variation, and it does give us a beautiful pattern that can be used for many things. Our sample would make a beautiful tablecloth, or mats, or runners, dresser scarves, etc., as it is all of linen



**THREADING DRAFT:**

8	X			X			X		X
7	X			X			X X		X X
6	X			X			X X X		X
5	X			X			X		X
4	X	X	X	X			X		X
3	X	X X	X X	X			X		X
2	X X	X X	X X	X					X
1	X	X	X	X					X

**TIE-UP DRAFT:**

8			0	0	0	0			0	
7				0	0	0	0	0		
6	0			0	0	0	0	0		
5	0	0			0	0	0			
4	0	0	0			0			0	
3	0	0	0				0	0		
2	0	0	0	0					0	
1	0	0	0	0	0				0	
	1	2	3	4	5	6	7	8	9	10

**WARP:**

Our warp is the 45/3 RAW GREY IRISH LINEN that we have in good supply. It has 4500 yards per lb., is \$8.80 per pound, and comes on cones varying from 14 to 19 oz. each.

**WEFT:**

Our weft is a 6 fold bleached linen, called 40/6 linen. It is the equivalent of a 20/3 in size, has 2,000 yards per lb., and comes on about 1 lb. cones, and it too, is \$8.80 per lb.

**REED USED:**

A 12 dent reed was used, and it was double sleyed, 2 ends per dent, or 24 threads per inch.

**MORE ABOUT THE FABRIC:**

This was a fairly easy fabric to weave except for the fact that the 45/3 ply warp gave a few problems. Every once



DRAFTS AND DESIGNS:

Published monthly (except July & Aug.) by Robin & Russ Handweavers, 533 North Adams St., McMinnville, Oregon 97128.

SUBSCRIPTIONS: \$10.00 per year. Canadian is \$11.00 per year, & foreign subscriptions are \$12.00 per year. Back issues or single copies at \$1.25 each, plus 20¢ pp. Yearly subscriptions start with the Sept. issue. If you subscribe after September, back issues from September on will be mailed to you, unless you specify you want your subscription to start with the next September issue.

VOLUME 24, Number 9, May, 1982.

in a while, one ply of this 3 ply linen warp would break free from the other two, so we used spee-dee fabric cement, and glued this broken end back to the other two ends, and then we would proceed with the weaving. Other than this, there were no major problems. We did have an 8 thread selvage, threaded 1 to 8 on the right hand side, and then the selvage on the left was 8 to 1. We used an 18/3 nylon stitching twine for our selvage threads.

We did use a firm, even, triple beat on this, mainly because our weft thread is 6 ends of 40/1 linen all wound together as one, and these ends are not plied, but primarily just wound together. This linen would be hard to use for warp (the 40/6 ply) but it is easy to use as weft.

It was because of the construction of this weft thread that we used this triple beat. Gave very pleasing results.

Marcee Whaley, one of our employee's wove this, and did a very nice job. It is about her third piece of yardage weaving.

If you were going to weave a table-cloth or place-mats, then I would just use the 45/3 raw grey Irish linen as the selvage.

The treadling is a little long, as there are 50 shots in each complete pattern. If you are systematic about how you write it out and keep track of it, it will be much easier to weave. Do note that I have arranged the treadling in 9 groups to make for easier and faster weaving. This is a one shuttle weave, and is almost a walking treadling, so it is fairly fast to weave.

COST OF THE THREADS USED:

The 45/3 raw grey Irish Linen has 4500 yards per lb., comes on tubes of varying sizes, from 14 oz. to 1 lb. 2 or 3 oz. Cost is \$8.80 per lb.

The weft is a 40/6 fold bleached white linen from England. It seems to be a very nice quality. It comes on about 1 lb. cones, and is \$8.80 per lb. also. It is not a warp thread, but is a fine weft thread.

COST OF THE FABRIC:

in our warp, which was 40" wide, 24 ends per inch, it took approximately 13,500 yards of warp or 3 lbs. At \$8.80 per lb., our warp cost us \$26.40 for the entire 14 yards. Thus, our warp cost per yard comes to \$1.89 per yard.

We are still weaving this, as I write about the fabric. We have about 4 more yards to finish.

Thus, this is an approximation of the weft cost, keeping in mind what we have used of the 40/6 linen so far, and what is left.

We feel that it takes 1 lb. of the 40/6 bleached linen to weave 2½ yards of finished fabric. This should be quite accurate. This makes the weft cost come to approximately \$3.52 per yard.

WARP COST PER YARD, 40" -	\$1.89
WEFT COST PER YARD-----	\$3.52
=====	
FABRIC COST PER YARD	\$5.41

WIDTH OF WARP BEFORE & AFTER WEAVING:

Our warp with the selvage, was 40-2/3rds inches wide. After weaving, we checked the warp width against the wset-up width, and found that this fabric wove down to 38-3/4" wide.

ADVERTISEMENT:

11 COLORS, 50% SILK, 50% WOOL, IN A 4 PLY THREAD. It has 1350 yards per lb., comes on about 1 lb. cones, good for warp or weft and is \$16.00 per lb. Robin & Russ, 533 No. Adams St. McMinnville, Oregon 97128





# drafts and designs



*a guide for 5 to 12 harness weaves*

VOLUME 24, Number 10 June, 1982

## SAN DIEGO SUN-RISE:

This six (6) harness weave is actually an extended twill variation, and it results in an interesting pattern variation. I designed this for an upholstery but feel it might have many other better uses.

## WARP:

In the warp, we used 4 colors of the 6 strand floss that we have in so many colors. The colors in the warp are:

- A -- #83, Yellow, 6 strand cotton
- B -- #82, Maize, 6 strand cotton
- C -- # 45, Melon, 6 strand cotton
- D -- # 75, Tropic Orange, 6 strand cotton.

## WEFT:

In the weft, we had the same 4 colors of 6 strand cotton floss that were used in the warp.

The colors are A, Yellow; B, Maize; C, Melon; and D-Tropic Orange.

## REED USED:

We used a 10 dent reed, and it was double sleyed, 2 ends per dent, or 20 threads per inch.

## THREADING DRAFT:

6	B B	A A	D D	C C	
5	B B	A A	D D	C C	
4	C C	B B	A A	B B	
3	C C	B B	A A	B B	
2	D D	C C	B B	A A	
1	D D	C C	B B	A A	



## WIDTH AND LENGTH OF FABRIC, BEFORE AND AFTER WEAVING:

Our warp was 40" wide, and 14 yards long on the loom, after it was set up.

The finished fabric was about 38½ to 39" wide, and we received 12-¾ yards of finished fabric from our 14 yards of warp.



DRAFTS AND DESIGNS:

Published monthly (except July & Aug.) by Robin & Russ Handweavers, 533 North Adams St., McMinnville, Oregon 97128.

SUBSCRIPTIONS: \$10.00 per year. Canadian is \$11.00 per year, & foreign subscriptions are \$12.00 per year. Back issues or single copies at \$1.25 each, plus 20¢ pp. Yearly subscriptions start with the Sept. issue. If you subscribe after September, back issues from September on will be mailed to you, unless you specify you want your subscription to start with the next September issue.

VOLUME 24, Number 10, June, 1982

TREADLING SEQUENCE FOR MAY SAMPLE, Vol. 24, # 9, May, 1982.

I goofed, and forgot to put the treadling in the bulletin for the may sample, so here it is: Note that there are 50 shots in each complete pattern repeat:

TREADLE:

- 6,7,8,1,2,3,4,5,6,7,8,
- 1,2,3,4,5,4,3,2,3,4,5,
- 4,3,2,1,8,7,6,5,4,3,2,
- 1,8,7,6,7,8,1,8,7,6,7,
- 8,1,2,3,4,5.

End of one complete pattern repeat. Do repeat over and over as desired.

TIE-UP DRAFT:

6								
5								
4	0							
3								
2	0	0						
1	0	0						
	1	2	3	4	5	6	A	B
							7	8

TREADLING SEQUENCE:

Please note that there are 48 shots in one complete treadling sequence.. This is because the color sequence does change for each group of 12 threads. Thus, I will list it below as 12 groups of 4 threads and give the color sequence for each group of 4 threads.

- 1. Treadle 1,2,1,2, with melon
- 2. Treadle 3,4,3,4, with maize
- 3. Treadle 5,6,5,6, with yellow
- 4. Treadle 1,2,1,2, with maize
- 5. Treadle 3,4,3,4, with melon
- 6. Treadle 5,6,5,6, with tropic orange
- 7. Treadle 1,2,1,2, with yellow
- 8. Treadle 3,4,3,4, with maize
- 9. Treadle 5,6,5,6, with melon
- 10. Treadle 1,2,1,2, with tropic orange

- 11. Treadle 3,4,3,4, with yellow
  - 12. Treadle 5,6,5,6, with maize
- Remember, there are 48 shots in one complete pattern repeat. Do repeat over and over as desired.

And, of course, to make this even more interesting a fabric, you could use 4 colors in the warp as we did, and another 4 related colors in the weft, for even more interest.

MORE ABOUT THE FABRIC:

To our great pleasure, we found this fabric to be a very easy one to weave.

You do want to use a firm, even, heavy double beat. Throw one shot of weft thread through, beat, and change to the next treadle, before you beat again. Then, throw the 2nd shot, beat, change, and beat again.

Also, I did want to mention that we also made a sample with homespun yarns, and with wool tweed yarns. We liked all 3 of them, but since we had the best supply of threads in warp and weft in the cottons, we decided to weave it of the cottons

COST OF THE THREADS USED, AND MORE DETAILS ABOUT THE THREAD USED.

The 6 strand cotton floss is a good buy, as most of it is over-runs from a manufacturer, and we can sell it at a greatly reduced cost. Most of this, now, you purchase in 9 yard skeins, for about 30¢ each. Belding Lily charges about \$3.00 per 2 oz. tube, so that makes it \$24.00 per lb., and we are able to sell out ours for about \$8.00 per lb. It has about 2080 yards per lb., and came to us, some colors in skeins, and some colors on 3 to 4 lb. cones. We have been winding off onto about 1/2 lb. tubes, and the skeins are about 5 to 9 oz. each. At present we have about 22 colors on hand on 1/2 lb. tubes, and about 13 colors on skeins.

COST OF THE FABRIC:

In our 14 yard warp, we used 5 lbs. 7 oz. in the warp. This made the total warp cost come to \$41.75, and the cost per yard of the 40" wide warp per yard comes to \$2.95 per yard.

In the weft, we used slightly more thread than was used in the warp, about 20% more weft thread than warp thread, so our weft cost per yard comes to \$3.53 per yard.

WARP COST PER YARD---	\$2.95
WEFT COST PER YARD---	3.53
=====	
FABRIC COST PER YARD	\$6.48