

drafts and designs



a guide for 5 to 12 harness weaves

VOLUME 25, Number 1 September, 1982

LONDON LOOK:

This is a point twill variation on eight harnesses. It gives a nice basket weave effect with the warp a little more pronounced than the weft.

WARP:

Our warp is a blended yarn consisting of 25% mohair, 25% alpaca, 30% wool and 20% nylon; in a color called London Petrol. It is unscoured and has much lanolin in it. It is one of several deep rich colors, all of which come on 1 lb. cones with approximately 1500 to 1600 yards per pound.

WEFT:

In the weft we have the same blended yarn as in the warp but in a color called Vogue Plum. It is also unscoured.

REED USED:

A 10 dent reed was used, and it was double sleyed, 2 ends per dent, or 20 threads per inch.

THREADING DRAFT:

8							X	X
7	X						X	X
6		X					X	
5			X				X	
4			X				X	
3				X			X	
2				X	X	X		
1					X	X		



TIE-UP DRAFT:

	0			0		0	0	
0				0	0	0		
			0		0	0	0	
		0		0	0		0	
0	0		0			0		
	0	0	0				0	
0	0	0		0				
	1	2	3	4	5	6	7	8

DRAFTS AND DESIGNS:

Published monthly (except July & Aug.) by Robin & Russ Handweavers, 533 North Adams St., McMinnville, Oregon 97128.

SUBSCRIPTIONS: \$10.00 per year. Canadian is \$11.00 per year, and foreign subscriptions are \$12.00 per year. Back issues or single copies at \$1.25 each, plus 15¢ pp. Yearly subscriptions start with the Sept. issue. If you subscribe after September, back issues from September on will be mailed to you, unless you specify you want your subscription to start with the next September issue.

VOLUME 25, Number 1, September 1982

TREADLING SEQUENCE:

Here is the sequence we used.

TREADLE:

- 1, 2, 3, 4, 3, 4, 3, 4, 3, 2, 1,
- 8, 7, 6, 5, 6, 5, 6, 5, 6, 7, 8.

END OF ONE COMPLETE PATTERN REPEAT. Repeat over and over as desired.

COST OF THE THREADS USED:

Our blended wool has approximately 1500 to 1600 yards per pound. It comes in eight colors; some unscoured such as the ones we used, and they sell for \$8.00 per pound. The rest of the colors are scoured so they are a little more at \$9.60 per pound.

COST OF THE FABRIC:

We used 7 lb. 9 oz. in our 40" wide warp. At \$8.00 per lb., our warp cost us \$60.50 for the entire 14 yards. This made the cost per yard come out to \$4.32 per yard.

In the weft we used only 4 lb. 13 oz. so our weft cost is \$38.50 and we received 12 yards of finished fabric. This makes the weft cost per yard come to \$3.20.

WARP COST PER YARD----\$4.32
 WEFT COST PER YARD----- 3.20
 =====
 FABRIC COST PER YARD \$7.52

MORE ABOUT THE FABRIC:

This is an easy fabric to weave, but the yarn has quite a few knots in it. These knots can be eliminated when you are warping or they can be handled while weaving. We fix them while weaving by using Speedee Cement, a special fabric cement made for this purpose. Just pull the knot apart, dab the ends with Speedee Cement and twist them together. This cement is permanent and remains flexible. One note of caution, however, You must be sure that your hands are clean when you apply the cement because it will pick up any dirt on your fingers and this might show on light colored yarns. The cement dries almost instantly and you are back to weaving again.

This blended yarn is available in several dark colors which could be used for different color effects in the weave. All the colors blend together and could make a subtle plaid by using one color on harnesses 1 through 4 and a different one on harnesses 5 through 8. In the weft two more colors could be used; one on the first half of the treadling and the other on the last half. The reds, blues, greens, grays, and black would blend nicely.

Still another variation would be to widen the sett a little to make the ovals more prominent. Perhaps a sett of 18 or 16 epi would allow more weft rows per inch and the ovals which occur in some of the blocks would stand out more clearly.

Most of these yarns are unscoured so they will change somewhat (and get lovelier and softer) when the fabric is finished. We recommend washing with Ivory Flakes to remove the oil and full the fabric, rinsing well, letting it dry, and steam-pressing it yourself or having your dry cleaner steampress it for you. It is often amazing how professional a fabric will look when it has been given a good press.

We hope you will enjoy weaving and using this yarn.

DRAFTS AND DESIGNS:

Published monthly (except July & Aug.) by Robin & Russ Handweavers, 533 North Adams St., McMinnville, Oregon 97128.

SUBSCRIPTIONS: \$10.00 per year. Canadian is \$11.00 per year, and foreign subscriptions are \$12.00 per year. Back issues or single copies at \$1.25 each, plus 20¢ ppd. Yearly subscriptions start with the Sept. issue. If you subscribe after September, back issues from September on will be mailed to you, unless you specify you want your subscription to start with the next September issue.

VOLUME 25, Number 2, October, 1982

TREADLING SEQUENCE:

The treadling sequence is designed for a walking motion. Keep your right foot on Treadle # 5 and move your left foot to each of the other treadles.

TREADLE:

1, 5, 1, 5, 2, 5, 3, 5, 4, 5, 3, 5, 2, 5
END OF ONE COMPLETE PATTERN REPEAT.
Repeat as desired.

COST OF THREADS USED:

The alpaca, wool, and nylon blend yarn is a 2-ply yarn with approximately 1500-1600 yards per pound. It comes in 8 colors, some scoured and some not. The Thames Green we used in the sample is scoured and is \$9.60 per pound. The unscoured colors are \$8.00 per pound.

The singles wool tweed used in the weft is one of 30 color combinations. All of the colors have flecks of another color giving them a country tweed look. The yardage on the various colors ranges from 1300-1750 yards per pound. The cost per pound on the wool tweeds is \$6.80 for all colors.

COST OF THE FABRIC:

We used 6 lb. 14 oz. in our 13 yard warp, 40" wide. At \$9.60 per pound the warp cost \$66.00 or \$5.08 per yard. In the weft we used 7 lb. 5 oz. of the tweed.

That comes out to \$49.57 for the 11-1/2 yards we got or \$4.31 per yard.

WARP COST PER YARD-----\$5.08
WEFT COST PER YARD-----4.31
=====

FABRIC COST PER YARD \$9.39

MORE ABOUT THE FABRIC:

As you can see by comparing this month's and last month's sample you have lots of opportunity for designing with this threading. The walking motion in the treadling makes this month's variation smooth and rhythmic to weave.

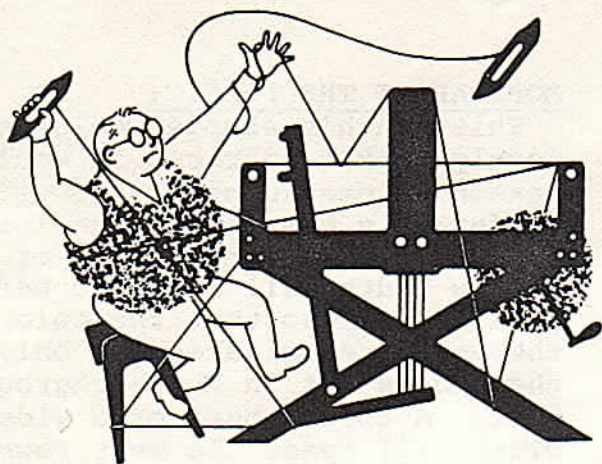
For selveges we added 8 threads of 18/3 nylon stitching twine on either side of the warp. We wound these threads right along with the wool warp and had no tension problems in 13 yards. They make a firm selvege for the shuttle yarn to pull against and keep the fabric from pulling in.

Both sides of this fabric are lovely, one side showing more of the warp color than the other. This effect could be utilized in your final design by using some of each side of the fabric.

Many color combinations are possible with these yarns. The alpaca/wool/nylon blend comes in deep colors while the wool tweeds come in lighter sporty colors with color flecks to blend or slightly contrast. They are very popular just now and we have 30 colors to choose from. The colors blend well with each other also and can be used together for stripes.

When the fabric is washed in Ivory Snow the yarns soften, especially the tweed. The warp floats sink into the fabric somewhat so they are not as vulnerable to catching and pulling. This fabric would make a warm sporty jacket such as an aviator jacket with ribbing at the collar, waist and wrists. Knitted ribbing using the warp yarn would provide a good contrast to this weft predominant fabric.

The fabric we have woven is quite dense and heavy. For a lighter weight fabric use a 2/8 or 2/12 worsted for the warp.



drafts and designs

TM

a guide for 5 to 12 harness weaves

VOLUME 25, Number 3. November 1982

WINTER BLACKBERRY LEAVES

A textured weave in 7-harnesses, this fabric has rows of double X's standing up from the surface. It is a very versatile threading.

WARP:

The warp is 4-ply Superwash wool from England. It is a quality wool which has been treated to give it several desirable features which make it machine-washable, non-shrink, anti-pill, and anti-tickle. It can be used on knitting machines also. It is approximately sportweight in size. The color in the sample is wine.

WEFT:

Dark brown four-ply knitting worsted is used for weft. It has 1100 yards per pound.

REED:

A 15-dent reed is used and it is sleyed one per dent.

THREADING DRAFT:



7			X	X				
6			X	X	X			
5		X				X		
4	X						X	
3	X					X		
2					X	X	X	X
1					X	X	X	

7		0	0	0	0		
6	0						0
5	0						
4	0	0					
3		0		0			
2	0		0		0		
1		0		0		0	
		1	2	3	4	5	6

DRAFTS AND DESIGNS:

Published monthly (except July & Aug.) by Robin & Russ Handweavers, 533 North Adams St., McMinnville, Oregon 97128.

SUBSCRIPTIONS: \$10.00 per year. Canadian is \$11.00 per year and foreign subscriptions are \$12.00 per year. Back issues or single copies are \$1.25 each plus 20¢ postage. Yearly subscriptions start with the Sept. issue. If you subscribe after Sept., back issues from Sept. on will be mailed to you, unless you specify you want your subscription to start with the next Sept. issue.

VOLUME 25, Number 3, November 1982

TREADLING SEQUENCE:

There are 22 rows per repeat.
1. Treadle 2, 1, 2, 1, 2
2. Treadle 6, 5, 4, 3
3. Treadle 2, 3, 4, 5
4. Treadle 6, 5, 4, 3
5. Treadle 2, 3, 4, 5, 6
End of one complete pattern repeat. Repeat as desired. End the last repeat of the fabric with 2, 1, 2, 1, 2 to balance the repeat so that it begins and ends with the same rows.

COST OF THE THREADS USED:

The Superwash wool in the warp is \$20.00 per pound and comes on cones of 13-14 oz. This 4-ply wool has 1800 yards per pound and comes in several colors. It has a smooth finish and is very evenly spun. There are few knots and it makes an easy warp to weave on.

The knitting worsted in the weft is an excellent buy at \$6.80 per pound and it comes in 4 oz. skeins. It has 1100 yards per pound and is available in white, natural, light yellow, tan, and dark brown.

COST OF THE FABRIC:

The warp took 4 lb. 1½ oz. and cost \$81.88 or \$6.83 per yard. One pound of weft weaves 1-9/10 yards so the weft cost per yard is \$3.58.

WARP COST PER YARD-----\$6.83

WEFT COST PER YARD----- 3.58

.....

FABRIC COST PER YARD \$10.41

MORE ABOUT THE FABRIC:

This month's sample would make a lovely jacket fabric. It would also make handsome cushions. Beating differently can change the look of the fabric. A strong beat or a narrow width will make the weft rows pack tightly so that the color of the weft predominates not only in the floats but in the background as well. A softer beat or a wider width will space the weft rows further apart. The warp color will show more clearly in the background and will make more of a contrast with the floats. This aspect is one you might experiment with. On our 14" wide sample, the weft predominated and the pattern repeat wove to 1". The 40" wide warp showed more of the warp and one repeat wove to only 1½".

Several treadling variations are possible and are easy to invent from the treadling we used. One variation would be to use a motif of a single X rather than the double X's:

- 1. Treadle 2, 1, 2, 1, 2
- 2. Treadle 6, 4, 3, 2, 3, 4, 6

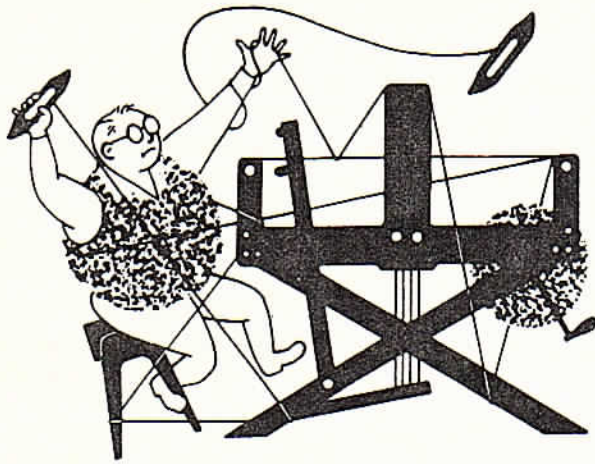
Instead of the X's, an elongated shape somewhat like a boat shuttle can be woven:

- 1. Treadle 2, 1, 2, 1, 2
- 2. Treadle 3,4, 6, 4, 3, 2

These little shuttle shapes can be joined to make a vertical textured stripe against a background of plain weave by treadling 2, 3, 4, 6, 4, 3 over and over.

The Superwash wool of the warp would be good as weft also. Although it is quite a bit more expensive it would give the entire fabric its properties of machine-washability, non-shrink, anti-pill and anti-tickle. People who cannot usually wear wool might like to try this yarn which has been researched for several years to develop these characteristics.

This is an easy fabric to weave and a good one to work up a good rhythm of throwing the shuttle, beating, and treadling. We hope you like it.



drafts and designs



a guide for 5 to 12 harness weaves

Volume 25, Number 4 December, 1982

MEANDER

This is one of the Bateman weaves from the latest folio by Virginia Harvey entitled Multiple Tabby Systems.

WARP

The warp is 20/2 Egyptian cotton in apple green.

WEFT

The tabby weft is 20/2 Egyptian cotton in dark green. The pattern weft is six-strand cotton floss in apple green.

REED USED

A 15-dent reed was threaded 2 warps per dent for a total of 30 ends per inch.

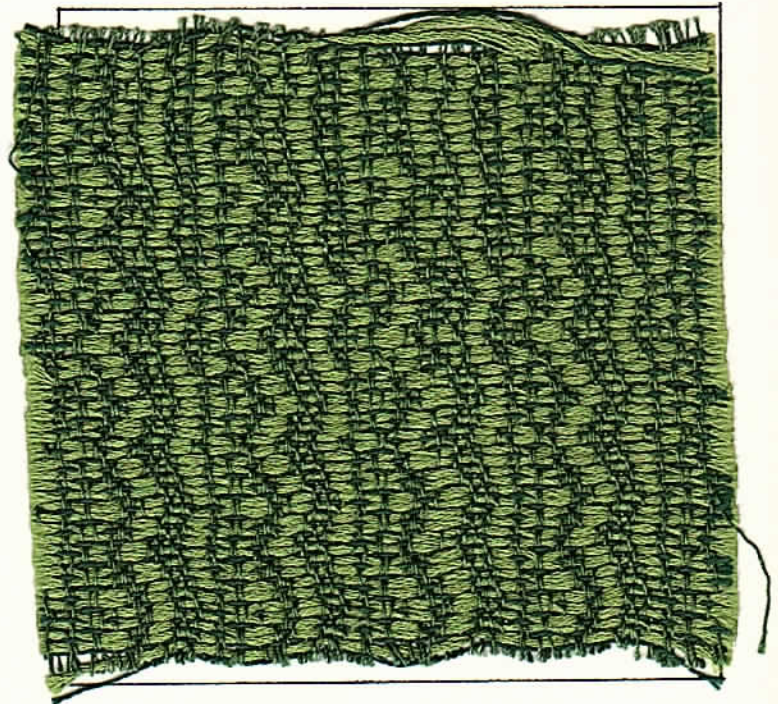
COST OF THREADS USED

The 20/2 Egyptian cotton has 8400 yards per pound. It costs \$14.00 per pound and comes on ½ lb. cones.

The six-strand cotton is \$8.00 per pound while it lasts. We have about 35 colors on ½ lb. cones or skeins. It has 2080 yards per pound.

THREADING DRAFT

8	8					8						8
7			7			7						7
6		6				6						6
5				5						5		5
4			4			4						4
3				3				3				3
2			2			2						2
1				1				1				1



TIE-UP

8		0	0	0		0	0					
7	0			0	0		0	0				
6		0			0	0		0	0			
5	0					0	0		0	0		
4		0	0				0	0		0		
3	0		0	0				0	0			
2		0		0	0				0	0		
1	0		0		0	0					0	
	A	B	1	2	3	4	5	6	7	8		

DRAFTS AND DESIGNS

Published monthly (except July & August) by Robin & Russ Handweavers, 533 North Adams St., McMinnville, Oregon 97128.

SUBSCRIPTIONS \$10.00 per year.

Canadian is \$11.00 per year, and foreign subscriptions are \$12.00 per year. Back issues or single copies at \$1.25 each, plus 20¢ postage. Yearly subscriptions start with the September issue. If you subscribe after September, back issues from September on will be mailed to you, unless you specify you want it to start with the next September issue.

VOLUME 25, Number 4. December, 1982

TREADLING SEQUENCE

Use tabby between each pattern shot.

1. Treadle 8, 2 times
2. Treadle 7, 2 times
3. Treadle 6, 2 times
4. Treadle 7, 2 times
5. Treadle 8, 2 times
6. Treadle 7, 2 times
7. Treadle 6, 2 times
8. Treadle 5, 2 times
9. Treadle 6, 2 times
10. Treadle 7, 2 times
11. Treadle 6, 2 times
12. Treadle 5, 2 times
13. Treadle 4, 2 times
14. Treadle 5, 2 times
15. Treadle 6, 2 times
16. Treadle 5, 2 times
17. Treadle 4, 2 times
18. Treadle 3, 2 times
19. Treadle 4, 2 times
20. Treadle 5, 2 times
21. Treadle 4, 2 times
22. Treadle 3, 2 times
23. Treadle 2, 2 times
24. Treadle 3, 2 times
25. Treadle 4, 2 times
26. Treadle 3, 2 times
27. Treadle 2, 2 times
28. Treadle 1, 2 times
29. Treadle 2, 2 times
30. Treadle 3, 2 times
31. Treadle 2, 2 times
32. Treadle 1, 2 times
33. Treadle 8, 2 times
34. Treadle 1, 2 times
35. Treadle 2, 2 times
36. Treadle 1, 2 times
37. Treadle 8, 2 times
38. Treadle 7, 2 times
39. Treadle 8, 2 times
40. Treadle 1, 2 times

Repeat as desired.

This is a long sequence but it can be handled more easily when you break it into groups of 5 pattern rows. Use tabby between all pattern shots just as you would with an overshot weave. However, you will notice that this threading and tie-up do not allow you to weave a true plain weave. It is called "tabby" merely for convenience in this weave.

COST OF THE FABRIC

The warp was 12 yards long and 40" wide and used 1 lb. 10 oz. of 20/2 cotton. That comes to \$22.75 or \$1.90 per yard.

The tabby weft took 15 oz. of 20/2 cotton or \$13.13 or \$1.31 per yard. The pattern weft of six-strand cotton took 3 lb. 3½ oz. That comes to \$25.75 or \$2.58 per pound.

WARP COST PER YARD	\$1.90
WEFT COST PER YARD	3.89
<hr/>	
FABRIC COST PER YARD	\$5.79

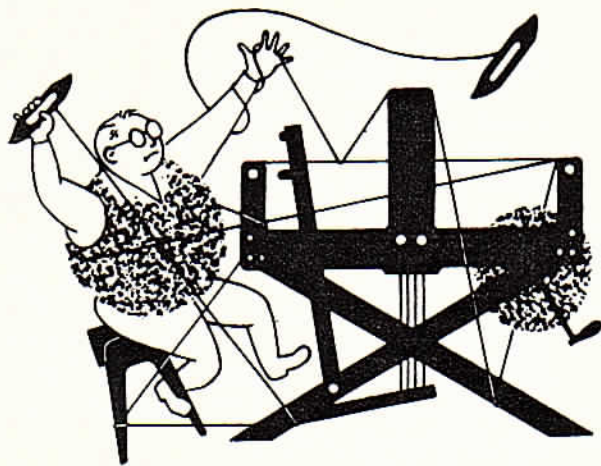
MORE ABOUT THE FABRIC

Dr. William Bateman worked extensively on weave systems after his retirement from college teaching in chemistry and pre-med. His work was unpublished at his death and Virginia Harvey is publishing each section of his manuscript as a separate monograph. This fabric sample is from the first monograph of the series called Multiple Tabby Weaves. We have the monographs in stock for \$16.95.

These weave structures are called multiple tabby weaves because they are made up of different blocks, each based on a separate set of tabbies. In this sample only one set of tabbies is used and consequently only one block of the threading weaves in tabby.

Because of the drapiness of the weave structure, Dr. Bateman felt that these weaves were good for draperies and we agree. The vertical stripe is also appropriate for drapery folds.

Be sure to keep track of your place in the treadling. Each pattern shot is repeated and a tabby shot follows each pattern shot. So, for every 5 rows we've listed you actually weave 20 rows and the whole pattern takes 160 rows! You don't think you can remember them all? Just break it down and keep track each time you stop.



drafts and designs



a guide for 5 to 12 harness weaves

VOLUME 25, Number 7. March, 1983

FRONDS

This 8-harness steep twill woven with a reverse twill treading sequence is the third in a series of William G. Bateman's multiple tabby weaves. It has a lightweight and drapeable hand.

WARP:

The warp is 20/2 mercerized cotton in moss green. This is an excellent quality Egyptian cotton with a long staple.

WEFT:

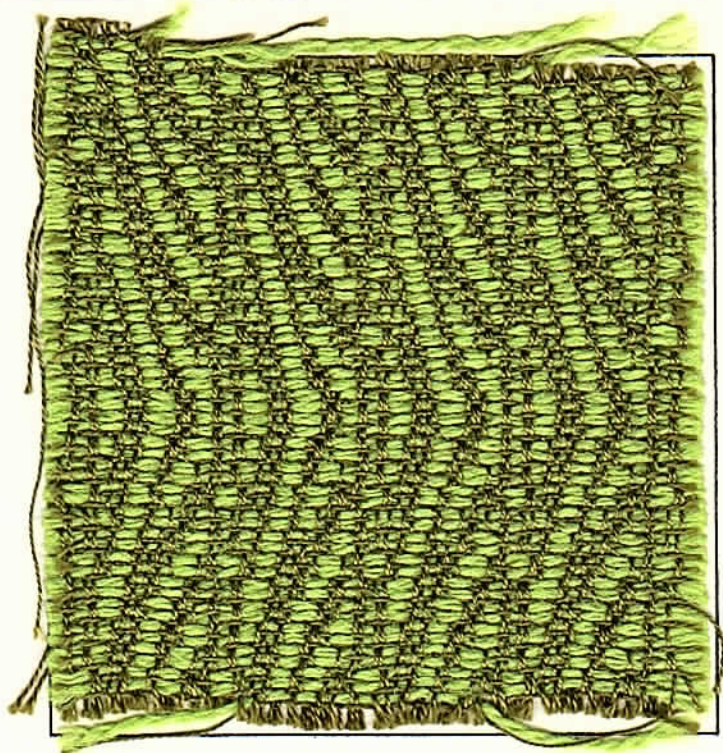
The pattern weft is 8/2 worsted of 60% wool and 40% nylon in bright light green. The tabby weft is the same as the warp.

REED USED:

A 15-dent reed was used and it was double sleyed, 2 ends per dent, or 30 warps per inch.

THREADING DRAFT:

8	8			8				8				
7			7			7				7		
6		6					6				6	
5				5				5				5
4			4				4					4
3				3				3				3
2					2				2			
1						1						1



TIE-UP DRAFT:

8	0	0	0			0				0		
7		0	0	0			0					0
6			0	0	0				0	0		
5	0			0	0	0						0
4		0			0	0	0				0	
3			0			0	0	0				0
2	0				0			0	0	0		
1	0	0				0				0		0
	1	2	3	4	5	6	7	8	A	B		

DRAFTS & DESIGNS:

Published monthly (except July & August) by Robin & Russ Handweavers, 533 N. Adams St., McMinnville, OR 97128.

SUBSCRIPTIONS: \$10.00 per year.

Canadian is \$11.00 per year, and foreign subscriptions are \$12.00 per year. Back issues or single copies are \$1.25 each, plus 20¢ pp. Yearly subscriptions start with the September issue. If you subscribe after September, back issues from September on will be mailed to you.

VOLUME 25, Number 7: March, 1983

TREADLING SEQUENCE:

This is a two-shuttle weave. Use tabby between all pattern shots.

1. Treadle # 8 - 4 x
2. Treadle # 7 - 2 x
3. Treadle # 6 - 2 x
4. Treadle # 5 - 2 x
5. Treadle # 4 - 2 x
6. Treadle # 3 - 2 x
7. Treadle # 2 - 2 x
8. Treadle # 1 - 4 x
9. Treadle # 2 - 2 x
10. Treadle # 3 - 2 x
11. Treadle # 4 - 2 x
12. Treadle # 5 - 2 x
13. Treadle # 6 - 2 x
14. Treadle # 7 - 2 x

End of one complete repeat. Repeat as desired. Notice that the turning points on treadles 8 and 1 are repeated 4 times instead of the usual 2.

COST OF THREADS USED:

The 20/2 mercerized cotton has 8400 yards per pound and comes on 1/2 pound cones. It is \$8.00 per pound. It is a high quality long staple Egyptian cotton and is an excellent warp yarn.

The 8/2 worsted is a nylon and wool blend. It contains 40% nylon for strength which makes it excellent for warp as well as weft. It comes on varying sized cones ranging from 1 lb. 4 oz. to 1 lb. 12 oz. It has 2100-2200 yards per pound and the price is \$6.80 per pound.

COST OF THE FABRIC:

We put on a 12 yard warp, 40" wide in the reed. The warp took 1 lb. 12½ oz. of 20/2 cotton. At \$8.00 per pound the warp cost \$14.25 or \$1.19 per yard.

The pattern weft of 8/2 worsted took 3 lb. 2 oz. At \$6.80 per pound the pattern weft cost \$21.25 or \$2.12 for each of the 10 finished yards we got. The tabby weft took 14 oz. of the 20/2 cotton or \$7.00 or 70¢ per yard.

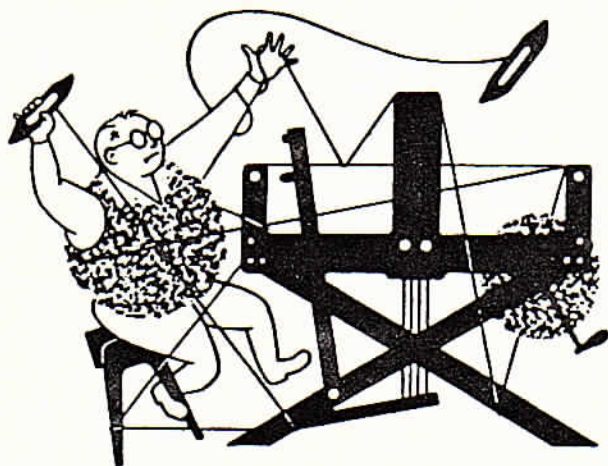
WARP COST PER YARD	\$1.19
WEFT COST PER YARD	2.82
= = = = =	= = = = =
FABRIC COST PER YARD	\$4.01

MORE ABOUT THIS FABRIC:

This month's sample is another tie-up and treadling variation of the same threading we have used previously. We thought these samples would give you a good opportunity to compare the different effect a change in tie-up and treadling as well as different colors and fibers make on the same threading. Multiple harness structures are especially good for these explorations because of the vast number of harness combinations which can be made. An eight-harness loom can produce 254 harness combinations and a sixteen harness loom can produce 65,534 combinations! Given the fact that weave structures repeat a harness combination several times during the weave, can you imagine how many different weave structures would be possible with just a single threading? It boggles the mind!

This threading and treadling can be found in Shuttle Craft Monograph 35 entitled Multiple Tabby Weaves by Dr. William G. Bateman and edited by Virginia Harvey. It is the first of what will be a series of books on Bateman's work. We have this monograph in stock for \$16.95.

The weaving of this sample had no particular problems. We used additional selvege threads as usual and had very little yarn breakage.



drafts and designs

TM

a guide for 5 to 12 harness weaves

VOLUME 25, Number 8. April, 1983

TRELLIS

This weave combines tabby with a loose basket weave for a honeycomb effect. It is highlighted by doubled threads in the warp and a heavy effect thread in the weft.

WARP:

The warp is 20/2 S.S. cotton in ivory. S.S. stands for "Super Sackel". It means that the cotton is the highest quality, equivalent to the cotton from the Sackel Valley in Egypt where the finest cotton in the world is grown.

WEFT:

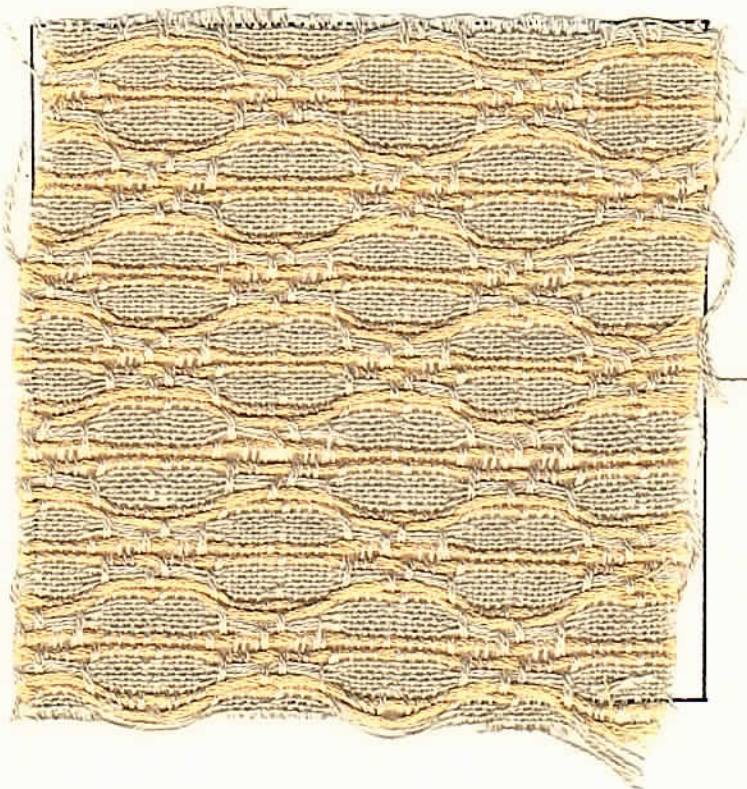
Two wefts are used. The background weft is the same as the warp. The effect yarn is 6-strand embroidery floss in light maize.

REED USED:

A 15-dent reed was used and it was sleyed double or 30 ends per inch.

THREADING DRAFT:

8	88					88					
7		7	7	7			7	7	7		
6			6	6	6			6	6	6	
5					55				55		
4								44		44	
3									3	3	3
2									2	2	2
1										11	11



DRAFTS & DESIGNS

Published monthly (except July & August) by Robin & Russ Handweavers, 533 N Adams St, McMinnville, OR 97128

SUBSCRIPTIONS: \$10.00 per year. Canadian is \$11.00 per year, and foreign subscriptions are \$12.00 per year. Back issues or single copies are \$1.25 each, plus 20¢ pp. Yearly subscriptions start with the September issue. If you subscribe after September, back issues from September on will be mailed to you.

VOLUME 25, Number 8. April, 1983

TIE-UP AND TREADLING FOR 12 TREADLES:

8		0	0	0		0		0		0		0
7				0		0		0		0		0
6				0		0		0		0		0
5	0	0	0		0		0		0		0	
4		0		0		0		0		0		0
3	0		0		0					0		
2		0		0		0						0
1	0		0		0		0		0		0	

1 2 3 4 5 6 7 8 9 10 11 12

Two shuttles are used.
 1. Treadle # 1, floss
 2. Treadles # 2, 3, 2, 3, 2, 3, 20/2
 3. Treadle # 4, floss
 4. Treadle # 5, floss
 5. Treadles # 2, 3, 2, 3, 2, 3, 20/2
 6. Treadle # 6, floss
 7. Treadle # 7, floss
 8. Treadles # 8, 9, 8, 9, 8, 9, 20/2
 9. Treadle # 10, floss
 10. Treadle # 11, floss
 11. Treadles # 8, 9, 8, 9, 8, 9, 20/2
 12. Treadle # 12, floss
 End of one complete repeat. Repeat as desired.

TIE-UP AND TREADLING FOR 10 TREADLES:

8	0	0	0		0	0		0		0
7			0			0		0		0
6			0		0		0		0	
5	0	0		0		0		0		0
4	0		0		0	0	0	0		0
3		0		0				0		
2	0		0		0					0
1		0		0		0		0		0

1 2 3 4 5 6 7 8 9 10

Two shuttles are used. On some rows two treadles are used simultaneously.
 1. Treadles # 2 + 4, floss
 2. Treadles # 1, 2, 1, 2, 1, 2, 20/2
 3. Treadle # 3, floss
 4. Treadle # 4, floss
 5. Treadles # 1, 2, 1, 2, 1, 2, 20/2
 6. Treadle # 5, floss
 7. Treadles # 9 + 6, floss
 8. Treadles # 6, 7, 6, 7, 6, 7, 20/2
 9. Treadle # 8, floss
 10. Treadle # 9, floss
 11. Treadles # 6, 7, 6, 7, 6, 7, 20/2
 12. Treadle # 10, floss
 End of one complete repeat. Repeat as desired.

MORE ABOUT THIS FABRIC:

This pattern is from Handweaving Patterns from Finland by Helvi Pyysalo and Viivi Merisalo published in 1960. Two treadle tie-ups are included because many 8-harness looms have only 10 treadles. When weaving multi-harness patterns it is advantageous to have as many treadles as the width of the loom will allow. The alternative is to use two treadles simultaneously as here or to change the tie-up in the midst of the repeat.

COST OF THREADS USED:

The ivory-colored 20/2 S.S. cotton has 4200 yards per half pound tube. It is \$14.00 per pound because of its special quality.
 The light maize 6-strand embroidery floss comes on ½ pound tubes or in ½ pound skeins. It has 2080 yards per pound and it \$8.00 per pound.

COST OF THE FABRIC:

The 12 yard warp was sett 40" wide and used 1 pound 10 oz. of 20/2 cotton. That comes to \$22.75 or \$1.90 per yard.
 The warp yielded 10 yards 26½ inches and used 1 pound 5 oz. of 20/2 cotton or \$18.38. That comes to \$1.71 per yard. The embroidery floss took 1 pound 11½ oz. That comes to \$13.75 or \$1.28 per yard.

WARP COST PER YARD \$1.90
 WEFT COST PER YARD 2.99
 = = = = =
 FABRIC COST PER YARD \$4.89



TM

drafts and designs

a guide for 5 to 12 harness weaves

VOLUME 25, Number 9. May, 1983.

TROPICANA ORANGE

This deeply textured 5-harness waffleweave has space-dyed cotton floss shimmering in the background.

WARP:

The warp is 6-strand cotton floss in two shades. One shade is a bright orange and the other is a space-dyed yarn shading from white through yellow-orange.

WEFT:

The weft uses the same yarns as the warp.

REED USED:

A 12-dent reed was used. It was sleyed 2 per dent or 24 warps per inch.

THREADING DRAFT:

5				X				
4			X		X			
3		X				X		
2	X						X	
1								O

X - Space-dyed yellow-orange floss
O - Bright orange floss



TIE-UP DRAFT:

5				O		O	
4			O		O		O
3		O		O	O	O	
2	O		O	O	O		O
1		O	O	O	O	O	
	1	2	3	4	5	6	7

DRAFTS & DESIGNS

Published monthly (except July & August) by Robin & Russ Handweavers, 533 N Adams St, McMinnville, OR 97128.

SUBSCRIPTIONS: \$10.00 per year. Canadian is \$11.00 per year, and foreign subscriptions are \$12.00 per year. Back issues or single copies are \$1.25 each, plus 20¢ pp. Yearly subscriptions start with the September issue. If you subscribe after September, back issues from September on will be mailed to you.

VOLUME 25, Number 9. May, 1983

TREADLING SEQUENCE:

Two shuttles are used, one of the bright orange floss and the other of the space-dyed yellow-orange floss.

1. Treadle 1 - bright orange floss.
2. Treadle 2, 3, 4, 5, 4, 3, 2 - space-dyed yellow-orange floss.

End of one complete repeat. Repeat as desired.

MORE ABOUT THE FABRIC:

This 5-harness waffleweave is the version most often used in the Scandinavian countries, according to Mary Black in The Key to Weaving. It has deeper indentations than the 4-harness threading but lacks the looseness and long floats of the 8-harness threading.

Waffleweaves are usually one-shuttle weaves but their structure invites color experimentation. Our variation highlights the ridges with rich color while the indentations hold varying proportions of space-dyed whites into yellow-oranges. The movement created by the space-dyed yarn softens the repetitive squareness of the surface.

The reverse side of the sample is interesting also with orange dots in the center of each hollow and the lighter space-dyed yarn outlining the ridges.

Many color progressions are possible with waffleweaves, from stripes to plaids, but the nicest ones seem to emphasize the 3-dimensionality of the weave structure as this sample does.

Waffleweaves are not difficult to weave but they shrink quite a bit to obtain their texture, so extra width and length should be planned for.

The deep texture of waffleweave makes the fabric absorbent when woven in cotton or linen. Thus, our sample could be used for towels. It would also cheer up a table or tray when made into placemats or runners. It could also be used in clothing, perhaps as a texture contrast in a yoke.

This same weave structure woven in wool would hold warmth because of the air pockets created by the texture. An afghan or a blanket would be lightweight and warm with this weave structure.

MORE ABOUT THE YARNS:

The 6-strand floss in this sample is Super Sackel quality. It is the highest quality in the world, equivalent to cotton from the Sackel Valley in Egypt where the finest cotton is grown.

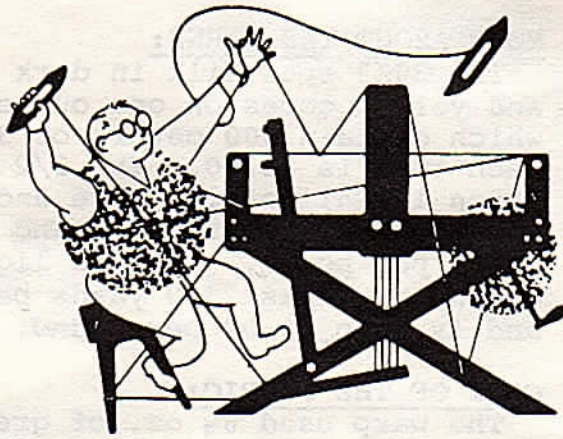
We have a good stock of this floss in skeins and cones. We have several solid colors such as the orange we used here. The solids sell for \$8.00 per pound. We also have a selection of beautiful space-dyed colors in blended combinations like the yarn used in the waffles of this pattern. They are slightly more expensive because of the special dyeing, selling for \$9.60 per pound. Both yarns have 2080 yards per pound.

COST OF THE FABRIC:

Our 12 yard warp used 4 lb. 13½ oz. of space-dyed yellow-orange at \$9.60 per pound or \$46.56. It also used 11 oz. of the orange at \$8.00 per pound or \$5.52.

The weft used 3 lb. 7 oz. of space-dyed or \$33. It also used 10 oz. of orange or \$5 for a total weft cost of \$38 or \$4.33 per yard.

WARP COST PER YARD	\$4.34
WEFT COST PER YARD	4.33
FABRIC COST PER YARD	\$8.67



drafts and designs



a guide for 5 to 12 harness weaves

VOLUME 25, Number 10. June, 1983.

MELON PATCH

In this 6-harness straight twill, the placement of color in the warp makes subtle lengthwise stripes against a textured background.

WARP:

The warp contains four yarns. One is a dark green 30/3 spun silk #578. The second is 2 strands of a 6/2 light green rayon. The third is a yellow 30/3 spun silk #413. And the fourth is a 3/2 spun rayon in a color called California olive.

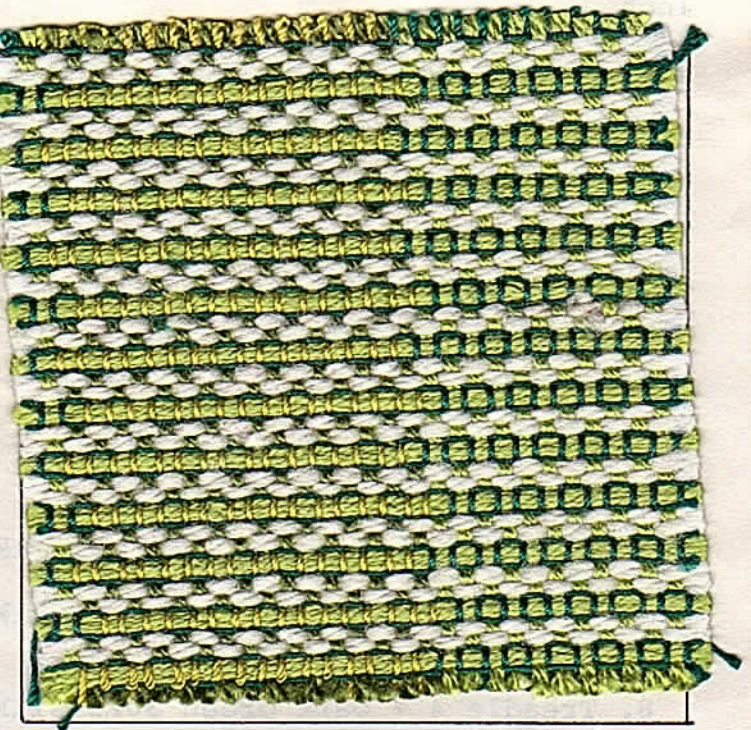
WEFT:

The weft contains the first two yarns of the warp plus a 2-ply white rayon. The yarns are used as single strands except for the light green rayon which is used 4 strands as one.

THREADING DRAFT:

6	Z		X
5		Y	O
4		Z	X
3		Z	X
2		Y	O
1		Z	X

┌───────────┐ ┌───────────┐
2" 2"



TIE-UP DRAFT:

6			O	
5				O
4			O	
3		O		
2	O			
1		O		

1 2 3 4

Z - Yellow 30/3 spun silk #413 X - Dark green 30/3 spun silk #578
Y - California olive 3/2 spun rayon O - 2 strands of light green 6/2 rayon

DRAFTS & DESIGNS

Published monthly (except July & August) by Robin & Russ Handweavers, 533 N Adams St, McMinnville, OR 97128.

SUBSCRIPTIONS: \$10.00 per year. Canadian is \$11.00 per year, and foreign subscriptions are \$12.00 per year. Back issues or single copies are \$1.25 each, plus 20¢ pp. Yearly subscriptions start with the September issue. If you subscribe after September, back issues from September on will be mailed to you.

VOLUME 25, Number 10. June, 1983

REED USED:

An 8-dent reed was used. It was threaded 3 per dent or 24 warps per inch.

THREADING NOTE:

The first six warps are repeated for 2" for a total of 48 warps. Then the second six warps are repeated for 2". Repeat across the width of the warp.

TREADLING SEQUENCE:

Four shuttles are used. All yarns are used singly except the light green rayon which is used 4 strands wound together on the shuttle.

1. Treadle 1 - White rayon
 2. Treadle 4 - White rayon
 3. Treadle 1 - Dark green 30/3 silk
 4. Treadle 2 - Light green rayon
 5. Treadle 1 - Dark green 30/3 silk
 6. Treadle 4 - White rayon
 7. Treadle 1 - White rayon
 8. Treadle 4 - Dark green 30/3 silk
 9. Treadle 3 - Light green rayon
 10. Treadle 4 - Dark green 30/3 silk
- End of one complete repeat. Repeat as desired.

MORE ABOUT THE FABRIC:

We had no broken warps in this yardage. For a selvege we used 6 strands of 18/3 nylon stitching twine on each edge, threading it like the pattern. Each yard took 45 minutes to weave.

MORE ABOUT THE YARNS:

The 30/3 spun silk in dark green and yellow comes on one ounce tubes which contain 300 meters or 325 yards. Each tube is \$2.50. The 3/2 spun rayon in California olive and white has 1260 yards per pound and is \$4.00 per pound. The 6/2 light green rayon has 2520 yards per pound and is also \$4.00 per pound.

COST OF THE FABRIC:

The warp used 8½ oz. of green 30/3 spun silk, 2 lb. 2 oz. of 6/2 light green rayon, 8½ oz. of yellow 30/3 spun silk, and 2 lb. 2 oz. of 3/2 California olive spun rayon. The warp totals \$59.50 or \$5.40 per yard.

The weft used 1 lb. 9½ oz. of the 6/2 spun rayon wound four strands together. At \$4.00 per pound, it cost \$6.38. Also used was 2 lb. 5½ oz. of white 3/2 spun rayon also at \$4.00 per pound for a total of \$9.38. The third weft was the 30/3 silk which used 7½ tubes at \$2.50 per tube or \$18.75. The entire weft totaled \$34.51 or \$4.31 per yard.

WARP COST PER YARD	\$5.40
WEFT COST PER YARD	4.31
FABRIC COST PER YARD	\$9.71

MORE ABOUT THE FABRIC: (continued)

Four shuttle weaves are, of course, much slower to weave than one shuttle weaves, but this fabric progressed easily without much problem. As you start weaving a yardage like this, find a rotation order for the shuttles or else a place to leave and pick up each shuttle. After a few repeats your hand will automatically reach for it. Also, try to coordinate in your mind ways to match the treadling sequence and the weft yarn. You will not only weave faster but will save yourself a lot of mistakes this way.

This fabric is soft and drapeable. It would be lovely as a garment fabric but should be lined because of the floats on the back.