

drafts and designs

a guide for 5 to 12 harness weaves

VOLUME 26, Number 1. September, 1983.

GRAPE ARBOR

This 12-harness point twill is woven with a diamond treading variation which alternately emphasizes the warp and weft in vertical stripes.

WARP:

The warp is 4-ply knitting worsted in white.

WEFT:

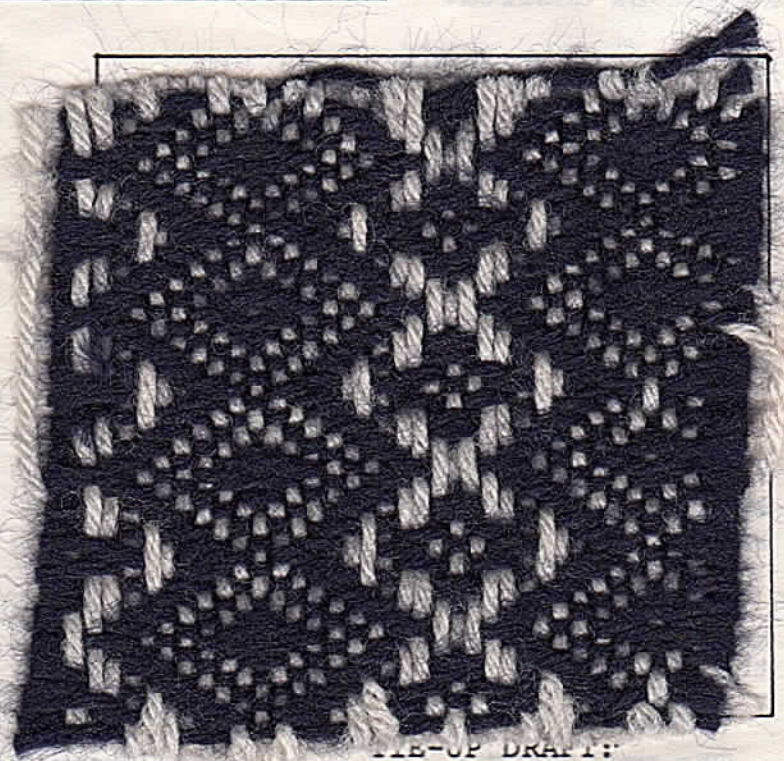
The weft is 2-ply brushed acrylic in a grape color.

REED USED:

A 10-dent reed was used and it was single sleyed, one per dent or 10 warps per inch.

THREADING DRAFT:

| | | | | | | | | | | | |
|----|--|--|--|--|--|--|--|---|----|----|----|
| 12 | | | | | | | | | | | 12 |
| 11 | | | | | | | | | | 11 | 11 |
| 10 | | | | | | | | | 10 | | 10 |
| 9 | | | | | | | | 9 | | | 9 |
| 8 | | | | | | | | 8 | | | 8 |
| 7 | | | | | | | | 7 | | | 7 |
| 6 | | | | | | | | 6 | | | 6 |
| 5 | | | | | | | | 5 | | | 5 |
| 4 | | | | | | | | 4 | | | 4 |
| 3 | | | | | | | | 3 | | | 3 |
| 2 | | | | | | | | 2 | | | 2 |
| 1 | | | | | | | | 1 | | | 1 |



TIE-UP DRAFT:

| | | | | | | |
|----|---|---|---|---|---|---|
| 12 | 0 | | | | 0 | 0 |
| 11 | | | | 0 | 0 | |
| 10 | | | 0 | 0 | | |
| 9 | | 0 | 0 | | | |
| 8 | 0 | 0 | | | | 0 |
| 7 | | 0 | | | 0 | 0 |
| 6 | 0 | | | | 0 | 0 |
| 5 | | | | 0 | 0 | |
| 4 | | | 0 | 0 | 0 | |
| 3 | | 0 | 0 | 0 | 0 | |
| 2 | 0 | 0 | 0 | | | 0 |
| 1 | 0 | 0 | | | 0 | |

1 2 3 4 5 6 7

DRAFTS & DESIGNS

Published monthly (except July & August) by Robin & Russ Handweavers, 533 N adams St, McMinnville, OR 97128.

SUBSCRIPTIONS: \$10.00 per year. Canadian is \$11.00 per year, and foreign subscriptions are \$12.00 per year. Back issues or single copies are \$1.25 each, plus 20¢ pp. Yearly subscriptions start with the September issue. If you subscribe after September, back issues from September on will be mailed to you.

VOLUME 26, Number 1. September, 1983.

TREADLING SEQUENCE:

Treadle 1, 2, 3, 4, 5, 6, 7, 6, 5, 4, 3, 2. End of one complete repeat. Repeat as desired.

MORE ABOUT THE YARNS:

The warp is 4-ply knitting worsted in white. It is a nice quality and has 1100 yards per pound and runs \$6.80 per pound.

The weft is 2-ply brushed acrylic in a grape color. It has between 1200 and 1300 yards per pound and costs \$6.00 per pound.

COST OF THE FABRIC:

We set our 12 yard warp 40" wide at 8 warps per inch but had to resley it to 10 per inch. This narrowed the warp to 32" wide.

The warp took 3 lb. 3 oz. of 4-ply knitting worsted. At \$6.80 per pound, the warp cost \$21.68 or \$1.81 per yard.

The weft took 4 lb. 3 oz. of brushed acrylic. At \$6.00 per pound, the weft cost \$25.13 or \$2.51 per yard.

WARP COST PER YARD \$1.81
WEFT COST PER YARD 2.51

FABRIC COST PER YARD \$4.32

MORE ABOUT THE FABRIC:

Look at the reverse side of this fabric for a more overall diamond

pattern with less stripe contrast. When each side of a fabric is different but attractive, the fabric is nice to use in a reversible situation.

This fabric would make a lovely afghan or blanket with the softness and loft created by the yarns and the twill variation weave structure. The brushed surface of the acrylic weft gives a slight fuzziness to the fabric and further warmth.

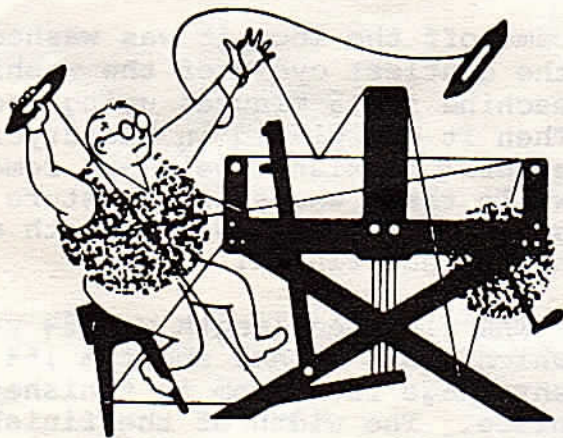
Besides afghans this fabric would make a soft, sweater-like jacket. A loom-formed jacket with rectangular body and sleeves would drape well in this soft fabric and be very attractive.

This threading is one of the basic threadings used in multi-harness weaving. Hundreds of weave structures can be woven by varying the tie-up.

Examining the tie-up shows that each row has a 3-thread weft float, a 3-thread warp float, a little tabby and another 3-thread weft float. Treadle 5 is different than the rest of the treadles. Many interesting weave structures are created by "mistakes" of this sort!

Notice that each treadle raises 5 harnesses and leaves 7 harnesses down. Even if one intended the reverse side to be the right side, weaving it upside down makes sense because of the savings in not having to lift 2 extra harnesses every row.

To weave this as an afghan or blanket we would suggest starting with some plain weave for a hem or as a heading for fringe tied with the white warp. The selveges weave all right without special threading. Because the warp is a knitting yarn it is stretchy. Don't beat too hard or the fabric will be stiff.



TM

drafts and designs

a guide for 5 to 12 harness weaves

VOLUME 26, Number 2. October, 1983

SMOKE PEARL BUTTONS

The soft coloration reminds one of the iridescence of grey pearl buttons. The fine yarns create a fine vertical striping.

WARP:

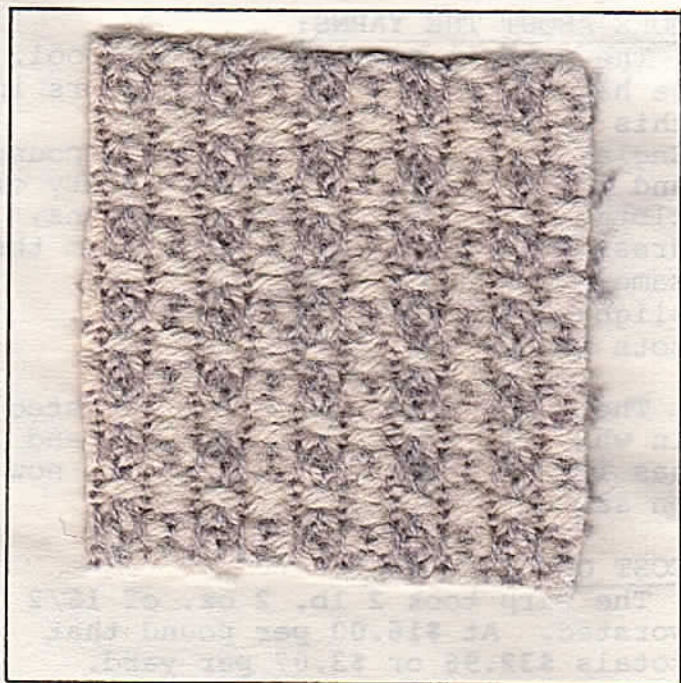
The warp is 18/2 worsted wool in grey.

WEFT:

The weft is 4-ply knitting worsted in white.

REED USED:

A 12-dent reed was used and it was sleyed 2 per dent or 24 warps per inch.



THREADING DRAFT:

| | | | | | |
|---|---|---|---|---|---|
| 8 | | | | | 8 |
| 7 | | | 7 | 7 | |
| 6 | | | 6 | | 6 |
| 5 | | 5 | | | 5 |
| 4 | | 4 | | | 4 |
| 3 | 3 | | | | 3 |
| 2 | 2 | | | | 2 |
| 1 | | | | | 1 |

TIE-UP DRAFT:

| | | | | | |
|---|---|---|---|---|---|
| 8 | | 0 | 0 | 0 | |
| 7 | 0 | | 0 | 0 | |
| 6 | 0 | 0 | | 0 | |
| 5 | 0 | 0 | 0 | | 0 |
| 4 | | | | 0 | |
| 3 | | | 0 | | 0 |
| 2 | | 0 | | | 0 |
| 1 | 0 | | | | 0 |
| | 1 | 2 | 3 | 4 | 5 |

DRAFTS & DESIGNS

Published monthly (except July & August) by Robin & Russ Handweavers, 533 N Adams St, McMinnville, OR 97128.

SUBSCRIPTIONS: \$10.00 per year. Canadian is \$11.00 per year, and foreign subscriptions are \$12.00 per year. Back issues or single copies are \$1.25 each, plus 20¢ pp. Yearly subscriptions start with the September issue. If you subscribe after September, back issues from September on will be mailed to you.

VOLUME 26, Number 2. October, 1983

TREADLING SEQUENCE:

Treadle 1, 2, 3, 4, 5, 4, 3, 2.
End of one complete repeat. Repeat as desired.

MORE ABOUT THE YARNS:

The warp is our 18/2 worsted wool. We have a wide selection of colors in this excellent quality yarn from England. It has 5000 yards per pound and is a good weight for a variety of clothing fabrics including tartans, dresses, suits, and stoles. From the same source in England we have a slightly heavier version, a 12/2. Both yarns are \$16.00 per pound.

The weft is 4-ply knitting worsted in white. It is a nice quality and has 1100 yards per pound. It is now on sale at \$6.80 per pound.

COST OF THE FABRIC:

The warp took 2 lb. 2 oz. of 18/2 worsted. At \$16.00 per pound that totals \$32.96 or \$3.07 per yard.

The weft took 4 lb. 8 oz. of 4-ply knitting worsted. At \$6.80 per pound the weft cost \$30.94 or \$3.64 per yard.

| | |
|--------------------------------|--------|
| WARP COST PER YARD | \$3.07 |
| WEFT COST PER YARD | 3.64 |
| FABRIC COST PER YARD | \$6.71 |

WIDTH AND LENGTH AFTER FINISHING:

The loom was set up with a 10-3/4 yard warp, 40" wide. When the fabric

came off the loom it was washed on the gentlest cycle of the washing machine for 5 minutes using Woolite. Then it was placed in the dryer with several Turkish towels and removed while there was still moisture present. It was pressed on both sides as a final finish.

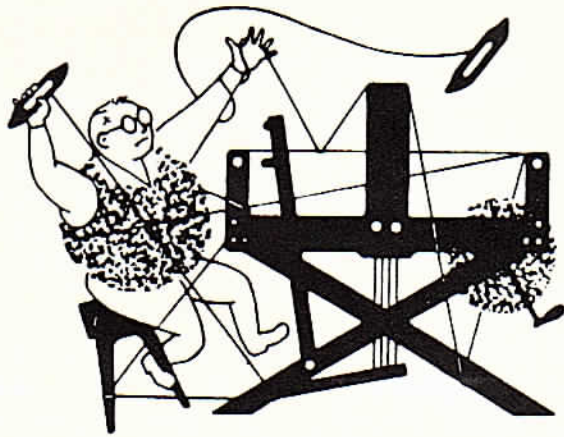
The finished length was 8½ yards, which means it had about a 15% shrinkage from loom to finished piece. The width of the finished fabric was 35 inches which means that it shrank 12% in width.

Wool fabrics usually shrink about 10% in length and width during the weaving process. Weave structures with floats will shrink more as will stretchy or springy yarns. Finishing the fabric by washing will shrink it more and will close in the weave making it more compact and unified.

When planning a fabric it is a good idea to add at least 10% to both width and length. Additional amounts should be added in anticipation of the finishing process to be used and the weave structure should be considered.

MORE ABOUT THE FABRIC:

The tie-up and treadling sequence give this fabric a vertical stripe made up from contrasting warp-face and weft-face structures. Look at the tie-up and compare what happens to harnesses 1-4 and harnesses 5-8. Harnesses 1-4 are basically a weft-face twill while harnesses 5-8 are warp-face twill on the opposite diagonal. Now look at treadles 4 and 5. They are exactly opposite, one raising all the harnesses the other leaves down. These two treadles form the sharp vertical edge between the stripes. They are sometimes called cutting lines because they are so distinct. In fact they are the distinguishing feature of a whole classification of twills--Dornick twills.



TM

drafts and designs

a guide for 5 to 12 harness weaves

VOLUME 26, No. 3. November, 1983.

BUDS AND LEAVES

Here in Oregon some of the camelias bloom again in November. The light green buds make a lovely contrast with the dark shiny leaves just as so many other trees are losing theirs.

WARP:

Two warp yarns are used. The first yarn, which is the more prominent, is two strands of 6/2 spun rayon in lime green. The second yarn, which is much finer, is 30/3 spun silk in dark green, #578.

WEFT:

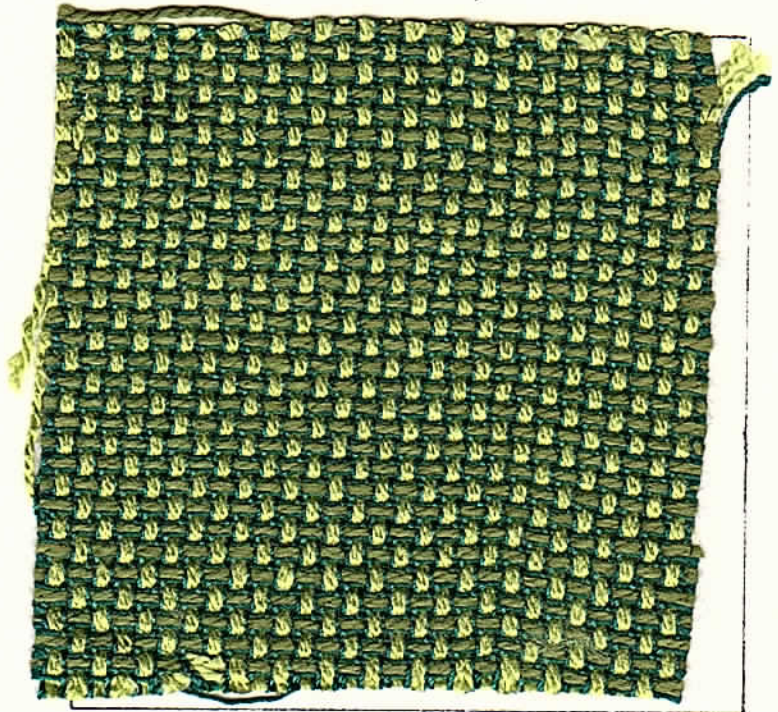
The weft is 3/2 spun rayon in moss green and 30/3 spun silk in dark green #578.

REED USED:

An 8-dent reed was used and it was sleyed 4 per dent; 2 rayon and 2 silk. The two rayon are threaded in the same heddle.

THREADING DRAFT:

| | | | | | |
|---|---|----|---|---|----|
| 6 | X | | | | |
| 5 | | OO | | | |
| 4 | | | X | | |
| 3 | | | | X | |
| 2 | | | | | OO |
| 1 | | | | | X |



X - 30/3 spun silk in dark green
O - 6/2 spun rayon in lime green

TIE-UP DRAFT:

| | | | | | | |
|---|---|---|---|---|---|---|
| 6 | O | | | O | O | |
| 5 | | | | O | O | O |
| 4 | | | O | | O | O |
| 3 | O | O | | O | | |
| 2 | O | O | O | | | |
| 1 | | O | O | | | O |

DRAFTS & DESIGNS

Published monthly (except July & August) by Robin & Russ Handweavers, 533 N Adams St, McMinnville, OR 97128.

SUBSCRIPTIONS: \$10.00 per year. Canadian is \$11.00 per year, and foreign subscriptions are \$12.00 per year. Back issues or single copies are \$1.25 each, plus 20¢ pp. Yearly subscriptions start with the September issue. If you subscribe after September, back issues from September on will be mailed to you.

VOLUME 26, No. 3. November, 1983.

TREADLING SEQUENCE:

Two shuttles are used.

1. Treadle 1 - 30/3 spun silk in dark green.
2. Treadle 2 - 3/2 rayon in moss green.
3. Treadle 3 - 30/3 spun silk in dark green.
4. Treadle 4 - 30/3 spun silk in dark green.
5. Treadle 5 - 3/2 rayon in moss green.
6. Treadle 6 - 30/3 spun silk in dark green.

End of one complete repeat. Repeat as desired.

MORE ABOUT THE YARNS:

The 6/2 rayon in lime green has 2520 yards per pound. It is \$4.00 per pound and has many uses as both a warp and weft yarn. Its two-ply structure gives it strength while its rayon shine gives luster and flexibility to the fabric. The 3/2 rayon in moss green is twice as heavy as the 6/2. It has 1260 yards per pound and is also \$4.00 per pound. It has the same characteristics as the finer yarn.

The 30/3 spun silk in dark green #578 has 300 meters or 325 yards on its 1 ounce tube. It is \$2.50 per tube. Its three-ply structure makes it strong and excellent as a warp yarn. Many textured and noil silks would be good as weft with this yarn for an all-silk fabric.

COST OF THE FABRIC:

The 10 yard 40" wide warp used 2 lb. 8½ oz. of the 6/2 rayon. At \$4.00 per pound it cost \$10.12. The warp also used 20 oz. of silk. At \$2.50 per ounce it cost \$50.00, so the total warp cost was \$60.12 or \$6.00 per yard.

The weft took 2 lb. 5½ oz. of 3/2 rayon. At \$4.00 per pound it cost \$9.32. The weft also took 18 oz. of 30/3 silk. At \$2.50 per ounce it cost \$45.00. The entire weft cost \$54.32 or \$6.21 per yard.

| | |
|------------------------------|--------|
| WARP COST PER YARD | \$6.00 |
| WEFT COST PER YARD | 6.21 |

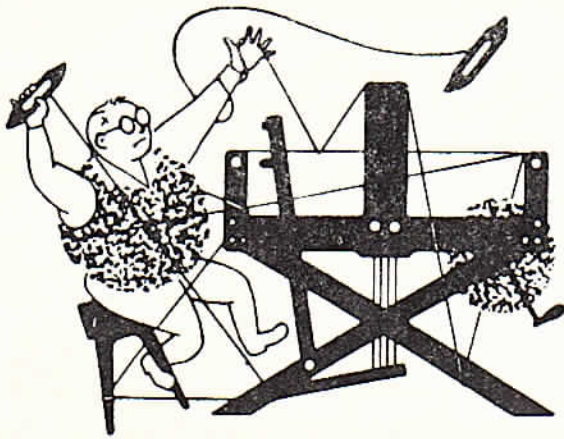
| | |
|--------------------------------|---------|
| FABRIC COST PER YARD | \$12.21 |
|--------------------------------|---------|

MORE ABOUT THE FABRIC:

For selveges we used 6 strands of 18/3 nylon stitching twine at each edge and had no problems with the weaving. The fabric drew in to 37½" during weaving which is about 8% shrinkage. The length of fabric off the loom was 8-¾ yards so the take-up and loom allowance was about ½ yard or 5%.

The fabric wove smoothly and easily with no problems. The slight difference in shade between the two rayon yarns is subtle but important. Being different gives extra interest to the surface and makes it shimmer. It is a much livelier fabric than it would have been with the same yarn used in both directions.

This weave structure gives a basket-weave similar to 4-harness canvas weave. The difference lies in the path of the silk threads which form the background. In this structure the silk threads take different paths on either side of the more dominant rayon yarns. In the 4-harness version the silk yarns would take the same path because they are on the same harness. The extra harnesses allow for the separate paths. This fabric would make lovely suiting fabric.



drafts and designs



a guide for 5 to 12 harness weaves

VOLUME 26, No. 4. December, 1983

RIBWORKS

Warps in alternating colors are woven in a corded doubleweave structure. The weft alternates also for a solid color in each cord.

WARP:

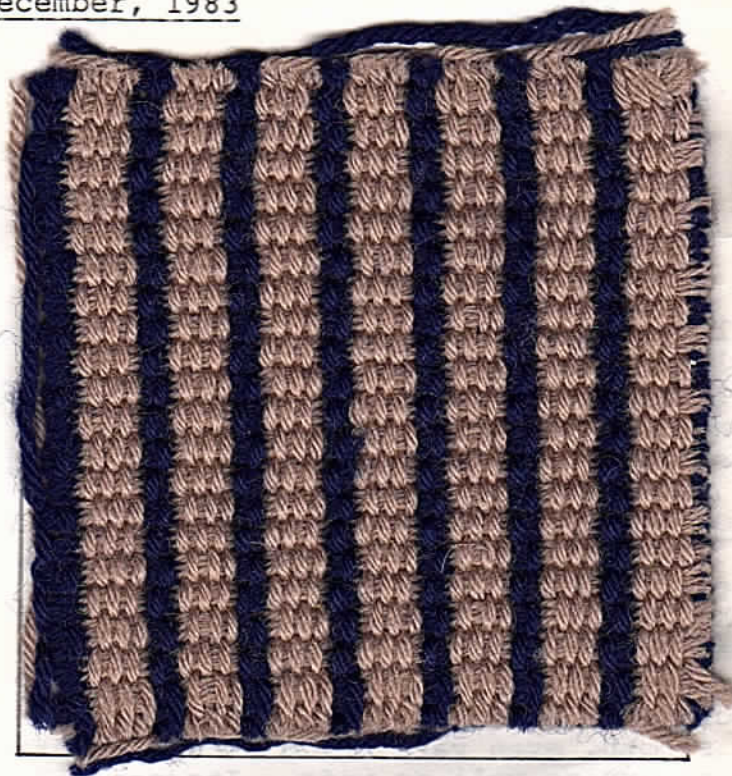
The warp has two shades of 4-ply Superspun Superwash Wool from England, French Navy and Fawn.

WEFT:

The weft is the same two yarns as the warp.

REED USED:

A 10-dent reed was used. It was sleyed 3 per dent or 30 warps per inch.



THREADING DRAFT:

| | | | | | | | |
|---|---|---|---|---|---|---|---|
| 8 | N | | | N | | | N |
| 7 | | F | | | F | | F |
| 6 | | | N | | | N | |
| 5 | | | F | | | F | |
| 4 | | | | N | | | |
| 3 | | | | F | | | |
| 2 | | | | | N | | |
| 1 | | | | | | F | |

N = French Navy
F = Fawn

TIE-UP DRAFT:

| | | | | |
|---|---|---|---|---|
| 8 | | | | 0 |
| 7 | | 0 | 0 | 0 |
| 6 | | 0 | | |
| 5 | 0 | 0 | | 0 |
| 4 | 0 | | 0 | 0 |
| 3 | | | 0 | |
| 2 | 0 | 0 | 0 | |
| 1 | 0 | | | |

1 2 3 4

DRAFTS & DESIGNS

Published monthly (except July & August) by Robin & Russ Handweavers, 533 N Adams St, McMinnville, OR 97128.

SUBSCRIPTIONS: \$10.00 per year. Canadian is \$11.00 per year, and foreign subscriptions are \$12.00 per year. Back issues or single copies are \$1.25 each, plus 20¢ pp. Yearly subscriptions start with the September issue. If you subscribe after September, back issues from September on will be mailed to you.

VOLUME 26, Number 4. December, 1983.

TREADLING SEQUENCE:

Two shuttles are used, one with French Navy and the other with Fawn.

1. Treadle 1 - Fawn
2. Treadle 2 - Navy
3. Treadle 1 - Fawn
4. Treadle 2 - Navy
5. Treadle 1 - Fawn
6. Treadle 2 - Navy
7. Treadle 3 - Fawn
8. Treadle 4 - Navy
9. Treadle 3 - Fawn
10. Treadle 4 - Navy
11. Treadle 3 - Fawn
12. Treadle 4 - Navy

End of one complete repeat. Repeat as desired.

COST OF THE YARNS:

The Superspun Superwash Wool has been produced with many outstanding characteristics. It is machine washable, non-shrink, anti-pill, and anti-tickle. Originally designed for use on knitting machines, it is a smooth, even yarn which is excellent for warp as well as weft. Its properties make it especially nice for garments because it is so easy to care for and so comfortable against the skin.

We have in stock a good range of colors. They are on cones of about 14 oz. each. The yarn runs 1850 yards per pound and costs \$20.00 per pound.

COST OF THE WARP AND WEFT:

The 12-yard, 40" wide warp used 4 lb. 10 oz. of French Navy and 4 lb. 8 oz. of Fawn. At \$20.00 per pound, the warp cost \$182.50 or \$15.21 per yard. The weft used 3 lb. 10½ oz. of French Navy and the same amount of Fawn. At \$20.00 per pound the weft cost \$146.25 or \$14.27 per yard of finished fabric.

| | |
|--------------------------------|---------|
| WARP COST PER YARD | \$15.21 |
| WEFT COST PER YARD | 14.27 |
| FABRIC COST PER YARD | \$29.48 |

MORE ABOUT THE FABRIC:

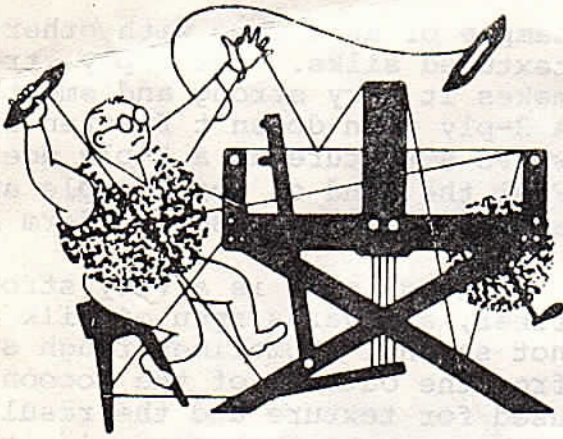
This is an easy and rhythmical pattern to treadle, although the weft packs closely together to make a thick fabric. We used 4 strands of nylon stitching twine at each selvege for ease of weaving.

This fabric could be used for a vest with its channels of alternating colors giving a vertical effect as well as warmth from its thickness. A jacket could also be made from this fabric and if the sleeves are too bulky, the same yarn would make knitted sleeves instead. In any case, a knitted collar, knitted cuffs, and a knitted waist ribbing could complete the jacket.

This fabric would also be attractive as upholstery or cushion covers. Its 4-ply construction makes this yarn durable. The fabric can be made firmer with a change in treadling which will make the warp weave in tabby rather than 3-fold basketweave.

1. Treadle 1 - Fawn
 2. Treadle 2 - Navy
 3. Treadle 3 - Fawn
 4. Treadle 4 - Navy
- End of one complete repeat.

A texture halfway this one and the original one would be to treadle 1 & 2 twice before treadling 3 & 4 twice. It is important to experiment with a warp once it is on the loom and discover just exactly what would be the best way to weave it.



drafts and designs

a guide for 5 to 12 harness weaves

VOLUME 26, No. 6. February, 1984

PARADISE PLAID

Two shades of silk weave in a textured repeat in this fabric. Silk takes dye in a rich elegant way. These colors remind us of the blues on Chinese Emperor robes.

WARP AND WEFT:

The warp and weft are the same in this fabric. The yarn is 30/3 spun silk in two colors: #1026 Blue and #5706 Turquoise.

REED USED:

An 18-dent reed was used. It was sleyed 2 per dent or 36 warps per inch.

NOTE ON THE WARP COLORS:

- B - Blue 30/3 silk
- T - Turquoise 30/3 silk

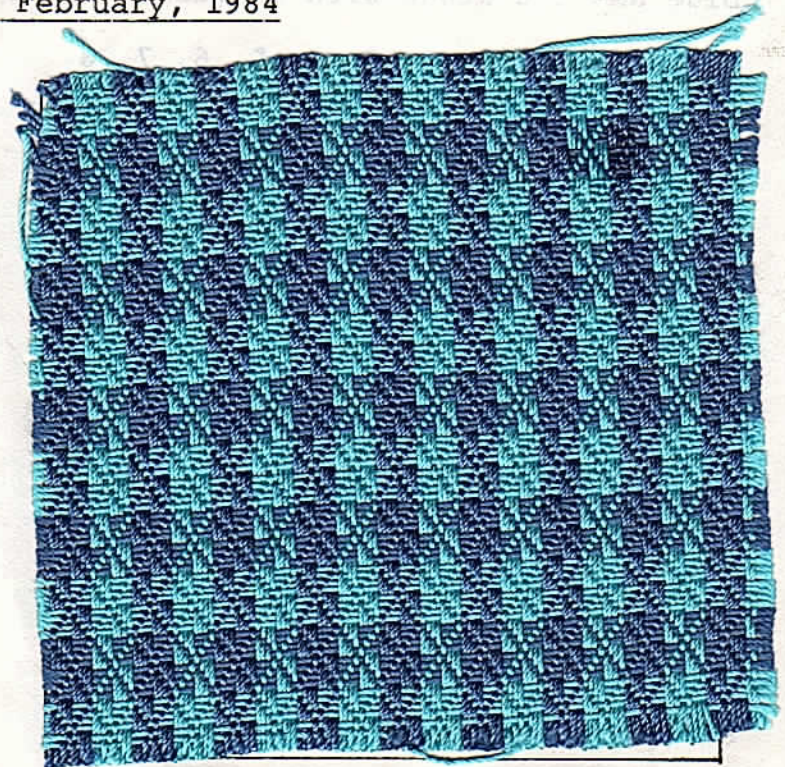
THREADING DRAFT:

| | | | | | | | | | | | |
|---|---|---|---|---|---|---|---|---|---|---|---|
| 8 | T | | | | | | B | | | | |
| 7 | | T | | | | | | B | | | |
| 6 | | | T | | | | | | B | | |
| 5 | | | | T | | | | | | B | |
| 4 | | | | | T | | | | | | B |
| 3 | | | | | | T | | | | | B |
| 2 | | | | | | | T | | | | B |
| 1 | | | | | | | | T | | | B |

TIE-UP DRAFT:

| | | | | | | | | | | | |
|---|---|---|---|---|---|---|---|---|---|--|---|
| 8 | | O | O | O | | | | | | | O |
| 7 | O | | O | O | | | | | O | | |
| 6 | O | O | | O | | O | | | | | |
| 5 | O | O | O | | O | | | | | | |
| 4 | | | | O | | O | O | O | | | |
| 3 | | | O | | O | | O | O | | | |
| 2 | | O | | | O | O | | O | | | |
| 1 | O | | | | O | O | O | | | | |

1 2 3 4 5 6 7 8



DRAFTS & DESIGNS

Published monthly (except July & August) by Robin & Russ Handweavers, 533 N Adams St, McMinnville, OR 97128.

SUBSCRIPTIONS: \$10.00 per year. Canadian is \$11.00 per year, and foreign subscriptions are \$12.00 per year. Back issues or single copies are \$1.25 each, plus 20¢ pp. Yearly subscriptions start with the September issue. If you subscribe after September, back issues from September on will be mailed to you.

VOLUME 26, Number 6. February, 1984.

TREADLING SEQUENCE:

Two shuttles are used, one with blue and the other with turquoise silk.

1. Treadle 1, 2, 3, 4, 5, 6, 7, 8 with blue 30/3 silk.
2. Treadle 1, 2, 3, 4, 5, 6, 7, 8 with turquoise 30/3 silk.

End of one complete repeat. Repeat as desired.

COST OF THE YARNS:

The 30/3 silk comes on tubes of 300 meters (325 yards). Each tube is \$2.50 and they come packaged ten tubes to a box. This yarn comes in hundreds of colors, more than we could possibly carry but we have chosen a wide selection to stock.

COST OF THE FABRIC:

The 10-yard 40½" wide warp used 1 lb. 10 oz. of the blue silk and the same amount of the turquoise. At \$2.50 per tube it cost \$112.15 or \$11.21 per yard.

The weft used 1 lb. 2½ oz. of each color. That totaled \$99.35 or \$11.35 per yard for the 8-¾ yards of finished fabric.

| | |
|--------------------------------|---------|
| WARP COST PER YARD | \$11.21 |
| WEFT COST PER YARD | 11.35 |
| FABRIC COST PER YARD | \$22.56 |

MORE ABOUT THE YARNS:

This is an excellent all-purpose yarn, used by itself as in this

sample or as a warp with other more textured silks. Its 3-ply structure makes it very strong and smooth. A 3-ply yarn doesn't flatten in a weave structure as a 2-ply does. Feel the hand of this sample and you'll appreciate how dense and firm it is.

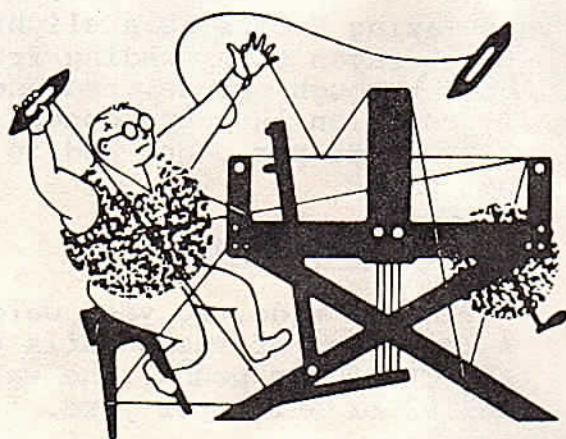
Although silk is a very strong fiber, all yarns spun of silk are not strong. Sometimes rough silk from the outside of the cocoon is used for texture and the resultant yarn may have weak spots in it. Also silk noil yarn is often too weak to use in a warp because of its short fibers and interesting texture. This 30/3 spun silk is very strong and would weave as warp for many of the other silk textures.

MORE ABOUT THE FABRIC:

This was an easy and fast fabric to weave. At each selvege we used 8 warps of nylon stitching twine for strength. It pulled in only about 4% in the weaving. There were no broken warps except where there were knots in the warp.

It took about one hour to weave a yard of this fabric. Several factors made this a quick yardage to weave. First, the yarn is smooth and opens cleanly in the shed. Second, the treadling sequence is very easy to repeat without making a mistake. Third, although this is a 2-shuttle weave, eight rows are woven with one shuttle before the other one is used. This encourages one to weave rhythmically. And lastly, the weft beats in evenly. A special effort does not have to be made to space the rows evenly as with soft or open weaves with wool.

We think this fabric with its small check repeat would be nice for a jacket or a dress. It has enough body to drape well. It would also make good upholstery or cushion fabric with its even surface and lack of floats. Color variations would be easy to design with the many colors we have available.



drafts and designs

TM

a guide for 5 to 12 harness weaves

VOLUME 26, No. 8. April, 1984

AFTERGLOW

Fire reds and metallics peek through a tussah silk warp-face satin weave in this unusual fabric.

WARP:

The warp is 3/9 tussah silk noil in a brownish gray color.

WEFT:

The weft contains two threads. One is a gold metallic braided over a flame red core. The other is a space-dyed rayon yarn called Blazing Embers.

REED:

A 15-dent reed was sleyed one per dent for 15 warps per inch.

THREADING DRAFT:

| | | | | | |
|---|---|---|---|---|---|
| 5 | X | | | X | |
| 4 | | X | | | X |
| 3 | | | X | | X |
| 2 | | | X | | X |
| 1 | | | | X | X |



TIE-UP DRAFT:

| | | | | | |
|---|---|---|---|---|---|
| 5 | | 0 | | | |
| 4 | | | | | 0 |
| 3 | | | 0 | | |
| 2 | 0 | | | | |
| 1 | | | | 0 | |
| | 1 | 2 | 3 | 4 | 5 |

DRAFTS & DESIGNS

Published monthly (except July & August) by Robin & Russ Handweavers, 533 N Adams St, McMinnville, OR 97128.

SUBSCRIPTIONS: \$10.00 per year. Canadian is \$11.00 per year, and foreign subscriptions are \$12.00 per year. Back issues or single copies are \$1.25 each, plus 20¢ pp. Yearly subscriptions start with the September issue. If you subscribe after September, back issues from September on will be mailed to you.

VOLUME 20, No. 8. April, 1984

TREADLING SEQUENCE:

Two shuttles are alternated throughout the weave.

1. Treadle 1 - Braided metallic
2. Treadle 2 - Blazing embers
3. Treadle 3 - Braided metallic
4. Treadle 4 - Blazing embers
5. Treadle 5 - Braided metallic
6. Treadle 1 - Blazing embers
7. Treadle 2 - Braided metallic
8. Treadle 3 - Blazing embers
9. Treadle 4 - Braided metallic
10. Treadle 5 - Blazing embers

End of one complete repeat. Repeat as desired.

MORE ABOUT THE YARNS:

The 3/9 tussah silk noil in the warp is a beautiful sturdy yarn we had plied specially for us. We have this yarn in eight colors, all of them soft shades such as rose pink, silver grey, dark grey, and light tan. They have 1550 yards per pound and are \$16.00 per pound. We also have a 60% silk 40% wool in natural color and a 2-ply tussah the same weight as the 3/9 we used in the sample.

The braided gold metallic comes on 8 oz. spools and is \$14.00 per pound. It is made up of a rayon core which is dyed a solid color. Outside is a thin gold metallic which lets the core peak through. We have two or three other colors in this metallic, all in limited amounts.

Blazing Embers is a slightly textured rayon yarn shading from dark gold through orange, red and fuschia. It comes on 1½ pound cones. It has 1600 yards per pound and is \$6.00 per pound.

COST OF THE YARNS:

The 40" wide, 10 yard warp used 4 lb. 1 oz. of tussah silk noil. At 16.00 per pound, the warp cost \$65.00 or \$6.50 per yard.

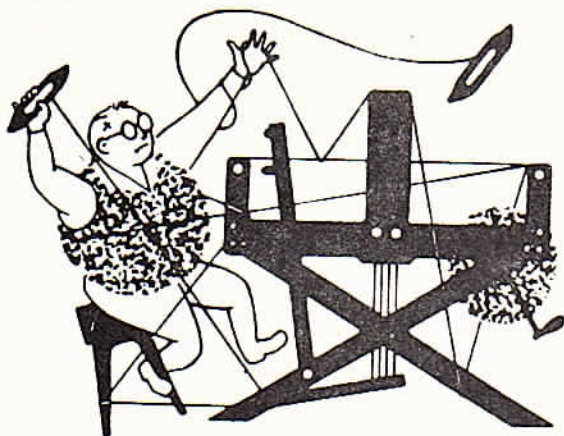
The metallic braid weft used 3 lb. 3 oz. At \$14.00 per pound that is \$44.38 or \$4.93 per yard. The space dyed rayon used 2 lb. 1 oz. At \$6.00 per pound that is \$12.38 or \$1.38 a yard. The weft thus totalled \$6.30 a yard.

| | |
|--------------------------------|---------|
| WARP COST PER YARD | \$6.50 |
| WEFT COST PER YARD | 6.30 |
| • • • • • | |
| FABRIC COST PER YARD | \$12.80 |

MORE ABOUT THE FABRIC:

This unusual fabric is woven in a 5-harness satin weave but the effect looks more like a twill. In fact the twill cords seem to run in double rows. If you crease the fabric along one of these furrows you will see just one of the weft yarns. Creasing the next furrow shows the other weft yarn. Herein lies the secret to the twill look of this weave structure: the wefts are alternated and each weft builds on top of itself in its own twill line.

This fabric with its subtle lights glittering through the sedate surface would make a good fabric for evening wear and dressy wear. Metallics are returning to fashion and this is a good weave structure for introducing them without having them take over the surface. The reverse side of the fabric shows just how much of the metallic effect is hidden from view.



drafts and designs

TM

a guide for 5 to 12 harness weaves

VOLUME 26, No. 9 May, 1984

SWISS DELIGHT

This novelty weave is taken from the pattern in a Swiss apron. Its bold look combines basket weave and tabby squares in a bold plaid.

WARP:

The warp is wool tweed singles in three colors: natural white, dark grey, and heather beige-grey.

WEFT:

The weft is the same yarn and colors as the warp.

REED:

An 8-dent reed was used. It was double-sleyed for 16 ends per inch.

THREADING DRAFT:

| | | | | | | | | | | | | | | | | | | | | |
|---|---|---|---|---|---|---|---|--|---|---|---|---|---|---|--|--|--|--|--|---|
| 8 | N | N | | N | N | | | | | | | | | | | | | | | |
| 7 | | | N | N | | N | N | | | | | | | | | | | | | O |
| 6 | D | | | | D | | | | D | | | | | | | | | | | O |
| 5 | D | | | | D | | | | D | | | | | | | | | | | O |
| 4 | | | | | | | | | | | X | X | | | | | | | | O |
| 3 | | | | | | | | | | X | X | | | | | | | | | O |
| 2 | | | | | | X | X | | | | | | X | X | | | | | | O |
| 1 | | | | | X | X | | | | | | | X | X | | | | | | O |

N - natural white
D - dark grey

X - heather beige-grey
O - 10/3 cotton

selvege



DRAFTS & DESIGNS

Published monthly (except July & August) by Robin & Russ Handweavers, 533 N Adams St, McMinnville, OR 97128.

SUBSCRIPTIONS: \$10.00 per year. Canadian is \$11.00 per year, and foreign subscriptions are \$12.00 per year. Back issues or single copies are \$1.25 each, plus 20¢ pp. Yearly subscriptions start with the September issue. If you subscribe after September, back issues from September on will be mailed to you.

VOLUME 26, Number 9. May, 1984

TIE-UP DRAFT:

| | | | | | | | | |
|---|---|---|---|---|---|---|---|---|
| 8 | | | 0 | 0 | | 0 | | 0 |
| 7 | | | 0 | 0 | 0 | | | 0 |
| 6 | 0 | 0 | | | | 0 | | 0 |
| 5 | 0 | 0 | | | | | 0 | 0 |
| 4 | | 0 | | 0 | 0 | 0 | | |
| 3 | 0 | | 0 | | 0 | 0 | | |
| 2 | 0 | | 0 | | | | | 0 |
| 1 | | 0 | | 0 | | | | 0 |
| | 1 | 2 | 3 | 4 | 5 | 6 | 7 | 8 |

TREADLING SEQUENCE:

This is a three-shuttle weave.

1. Treadle 1, 2, 1, 2 - heather beige-grey
 2. Treadle 3, 4, 3, 4 - heather beige-grey
 3. Treadle 1, 2, 1, 2 - heather beige-grey
 4. Treadle 5, 6 - dark grey
 5. Treadle 7, 8, 7, 8 - natural white
 6. Treadle 5, 6 - dark grey
 7. Treadle 7, 8, 7, 8 - natural white
 8. Treadle 5, 6 - dark grey
- End of one complete repeat. Repeat as desired.

MORE ABOUT THE YARNS:

The three wool tweed yarns used in this sample are from our line of singles wool tweeds. Although some of our tweeds are slightly heavier, these run about 1400 yards per pound. All the tweeds are \$6.80 per pound which is very reasonable. The yarn comes oiled making the yarn strong for the weaving process. The oil washes out in the finishing process leaving the yarn soft and fluffy.

COST OF THE FABRIC:

The 40" wide, 11 yard warp used a total of 6 lb. 5 oz. of wool tweed. At \$6.80 per pound, that is \$43.11 or \$3.91 per yard.

The weft took a total of 4 lb. 8 oz. of wool tweed. At \$6.80 per pound, that is \$30.60 or \$3.40 per yard for the 9 yards we wove.

After processing, the fabric's shrinkage totalled 18% in length and 15% in width.

WARP COST PER YARD \$3.91
 WEFT COST PER YARD 3.40

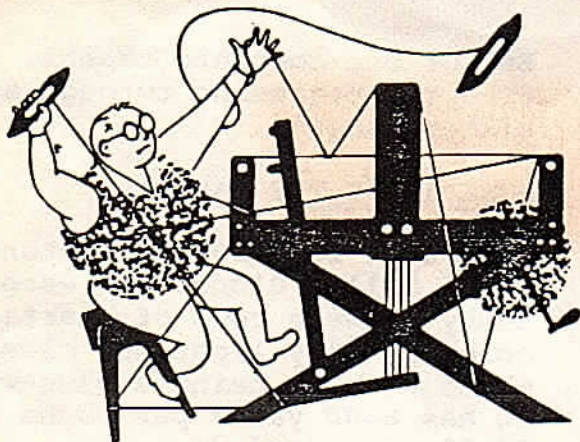
 FABRIC COST PER YARD . . . \$7.31

MORE ABOUT THE FABRIC:

This fabric with its basketweave float areas is easier to weave with a special selvege threading. We used 10/3 cotton in a straight twill using all the harnesses in sequence to help make a better edge.

The fabric wove quite well except that the yarn presented some problems in warping and weaving. The yarn is a singles and singles yarns like to twist around each other. To keep this from being a problem, they are better handled in larger than smaller groups of warps. At least there are fewer twists to undo. In weaving, the flake texture of the tweed tended to make the warps cling. The shed frequently had to be cleared by hand. Keeping the warp under tight tension also helped clear the shed.

We think you will agree that this unusual fabric is worth an extra bit of work. It has a good definition in its design with the dark yarns outlining and accenting the shifts in texture between tabby and basket weave. The colors we chose are especially nice because of their subtle coloration that becomes apparent when viewed close up. Other color combinations would work well too but remember to maintain the same relationship between the colors.



drafts and designs

a guide for 5 to 12 harness weaves

VOLUME 26, No. 10 June, 1984

SWEETHEARTS

These sprightly hearts are woven on an 8-harness rosepath threading. We give you two treadlings for them, depending on the number of treadles you have available.

WARP

The warp is 20/2 Durene cotton in a color called Blonde.

WEFT

There are three wefts. The pattern weft is 6-strand cotton floss in red. The tabby used with the hearts is a 20/2 Egyptian cotton while the tabby between the heart stripes is the same as the warp.

THREADING DRAFT

| | | | | | | | | | | | | | | | |
|---|---|---|---|---|---|---|---|--|---|--|---|---|---|---|---|
| 8 | | | | X | | | | | | | | | | | X |
| 7 | X | | | | | | | | | | | | | | X |
| 6 | | X | | | | | | | | | | | | X | |
| 5 | | | X | | | | | | | | | | X | | |
| 4 | | | | X | | | | | | | | X | | | |
| 3 | | | | | X | | | | | | | | X | | |
| 2 | | | | | | X | | | | | X | | | | |
| 1 | | | | | | | X | | X | | | | | | |



TIE-UP DRAFT

| | | | | | | | | | | | | | | | |
|---|---|---|---|---|---|---|---|---|---|---|---|---|---|---|---|
| 8 | | | | | 0 | 0 | | 0 | | | | | | 0 | 0 |
| 7 | 0 | 0 | 0 | 0 | 0 | 0 | 0 | 0 | | 0 | | | | | 0 |
| 6 | 0 | 0 | 0 | 0 | 0 | 0 | 0 | | 0 | 0 | 0 | | | | |
| 5 | 0 | 0 | 0 | 0 | 0 | 0 | 0 | 0 | | 0 | 0 | 0 | | | 0 |
| 4 | 0 | 0 | 0 | 0 | | 0 | 0 | | 0 | 0 | 0 | 0 | 0 | | 0 |
| 3 | 0 | 0 | 0 | | | | 0 | 0 | | 0 | 0 | 0 | 0 | 0 | 0 |
| 2 | 0 | 0 | | | | | | | 0 | 0 | 0 | 0 | 0 | 0 | 0 |
| 1 | 0 | | | | | | | 0 | 0 | | | | | | 0 |

1 2 3 4 5 6 7 8 9 10 11 12 13 14 15 16

DRAFTS & DESIGNS

Published monthly (except July & August) by Robin & Russ Handweavers, 533 N Adams St, McMinnville, OR 97128.

SUBSCRIPTIONS: \$10.00 per year. Canadian is \$11.00 per year, and foreign subscriptions are \$12.00 per year. Back issues or single copies are \$1.25 each, plus 20¢ pp. Yearly subscriptions start with the September issue. If you subscribe after September, back issues from September on will be mailed to you.

VOLUME 26, Number 10. June, 1984

REED:

A 15-dent reed was used. It was sleyed 2 per dent for a total of 30 warps per inch.

TREADLING SEQUENCE:

We are giving two treadling variations to choose from depending on how many treadles your loom has. Our sample was woven with 16 treadles and has staggered rows of hearts. To weave rows of hearts directly above each other takes only the first nine treadles.

The nine treadle repeat is given first:

1. Treadle 1, red floss, tr. 8, pink
2. Treadle 2, red floss, tr. 9, pink
3. Treadle 3, red floss, tr. 8, pink
4. Treadle 4, red floss, tr. 9, pink
5. Treadle 5, red floss, tr. 8, pink
6. Treadle 6, red floss, tr. 9, pink
7. Treadle 7, red floss, tr. 8, pink
8. Treadle 9, treadle 8, blonde for 11 rows.

End of one repeat. Repeat as desired.

For sixteen treadles, weave as above but add these rows at the end before repeating the entire sequence.

9. Treadle 10, red floss, tr. 8, pink
10. Treadle 11, red floss, tr. 9, pink
11. Treadle 12, red floss, tr. 8, pink
12. Treadle 13, red floss, tr. 9, pink
13. Treadle 14, red floss, tr. 8, pink
14. Treadle 15, red floss, tr. 9, pink
15. Treadle 16, red floss, tr. 8, pink
16. Treadle 9, treadle 8, blonde for 11 rows.

End of one complete repeat. Repeat from the beginning through all sixteen steps.

MORE ABOUT THE YARNS:

We used 20/2 Durene Cotton in a color called Blonde for warp and tabby between rows of hearts. This color is very light and close to white without being a blue-white. It has 8400 yards per pound and is \$4.80 per pound.

The other tabby is 20/2 Egyptian Cotton in pink. It is an excellent quality from our full color line of Egyptian cottons. It also has 8400 yards per pound and sells for \$14.00 a pound.

Red 6-strand cotton floss weaves the hearts. This floss has 2080 yards per pound and is \$8.00 per pound. We have many colors available.

COST OF THE FABRIC:

Our 10-yard, 40" wide fabric took 1 lb. 7½ oz. of 20/2 Durene cotton. At \$4.80 a pound, the warp cost \$7.05 or \$.71 per yard.

In the weft we used 1 lb. 10 oz. of red floss at \$8.00 per pound. That is \$13.00 or \$1.55 per woven yard. We also used 6½ oz. of 20/2 Egyptian cotton in pink for \$9.10 or \$1.08 per yard and 10 oz. of 20/2 Durene for \$3.00 or 36¢ per yard.

WARP COST PER YARD \$.71
WEFT COST PER YARD 2.99

FABRIC COST PER YARD \$3.70

MORE ABOUT THE FABRIC:

We liked the subtlety of the pink tabby beneath the hearts. It softens the red and makes the white stripes stand out well.

This sample is a good example of why it is a good idea to get as many extra treadles as your multi-harness loom will allow. It gives you more treadling variations.