

DRAFTS & DESIGNS

Published monthly (except July & August) by Robin & Russ Handweavers, 533 N Adams St, McMinnville, OR 97128.

SUBSCRIPTIONS: \$10.00 per year. Canadian is \$11.00 per year, and foreign subscriptions are \$12.00 per year. Back issues or single copies are \$1.25 each, plus 20¢ pp. Yearly subscriptions start with the September issue. If you subscribe after September, back issues from September on will be mailed to you.

VOLUME 27, No. 1 September, 1984

TIE-UP DRAFT:

6	0		0	0		
5		0	0			0
4	0	0			0	
3	0			0		0
2			0		0	0
1		0		0	0	
	1	2	3	4	5	6

TREADLING SEQUENCE:

This is a one-shuttle weave using 30/4 bleached white linen for weft.

1. Treadle 1, 2, 3, 4, 5, 6
2. Treadle 1, 2, 3, 4, 5, 6
3. Treadle 5, 4, 5, 4, 3, 4
4. Treadle 3, 2, 3, 2, 1, 2
5. Treadle 1, 6, 1, 6, 5, 6
6. Treadle 5, 4, 3, 2

End of one complete repeat. Repeat as desired.

COST OF THE YARNS:

The 45/3 raw grey linen has 4500 yards per pound. It comes on 12 oz. to 1 lb. 4 oz. cones and is \$8.80 per pound.

The 30/4 bleached white linen has 2250 yards per pound. It comes on 2-2½ lb. cones and is \$9.60 per pound. It is a good quality yarn which we had plied for us in the east.

COST OF THE FABRIC:

The 10 yard 40" wide warp used 2 lb. 3 oz. of the 45/3 raw grey linen.

At \$8.80 per lb. it comes to \$19.25 or \$1.93 per yard.

We obtained 8½ yards of finished fabric. The weft used 4 lb. 8 oz. of 30/4 bleached white linen. That is \$43.20 or \$5.08 per yard.

WARP COST PER YARD \$1.93
WEFT COST PER YARD 5.08

FABRIC COST PER YARD \$7.01

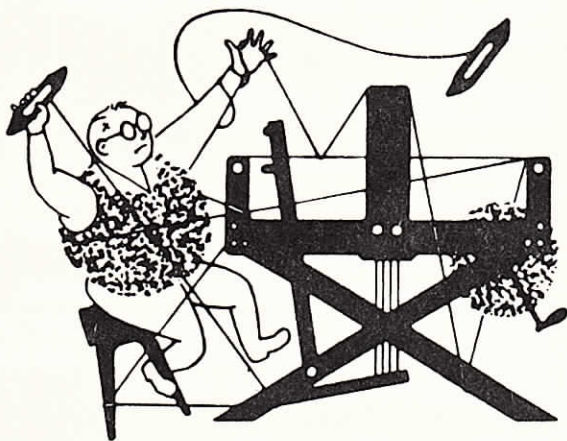
MORE ABOUT THE FABRIC:

We used a 12 thread twill selvege of 10/3 cotton on each edge of the fabric, threaded 1, 2, 3, 4, 5, 6, twice. This made a stronger selvege than the linen. Linen is a very strong fiber but it is not very abrasion-resistant and the action of the reed on the edge warps often frays them until they fall apart.

The treadling seems complicated but after a few repeats it becomes familiar. Watching the pattern develop as each row is woven helps catch mistakes before going too far past them.

This weave would make an elegant tablecloth or set of mats. The subdued twill variation has a feeling of movement because of the asymmetry of the threading yet the cream and white color combination keep it from feeling busy.

Our sample fabric has been finished to bring out the beautiful sheen of the linen. It was washed on the gentle cycle with Ivory Flakes. Then it was hung until just damp enough for ironing. It was ironed on an Ironrite roller ironer until dry. The action of the ironer moving over and over it polishes the fabric to a high sheen. Linen gets more beautiful the more it is washed and ironed. Some people wash linen frequently when it is new to help develop its wonderful hand. Others use methods to speed up the softening process which treat the fabric rather harshly. We believe that linens and other handwovens should be used frequently and their beauty will bloom naturally.



drafts and designs



a guide for 5 to 12 harness weaves

VOLUME 27, No. 2 October, 1984

DIAMOND TIES

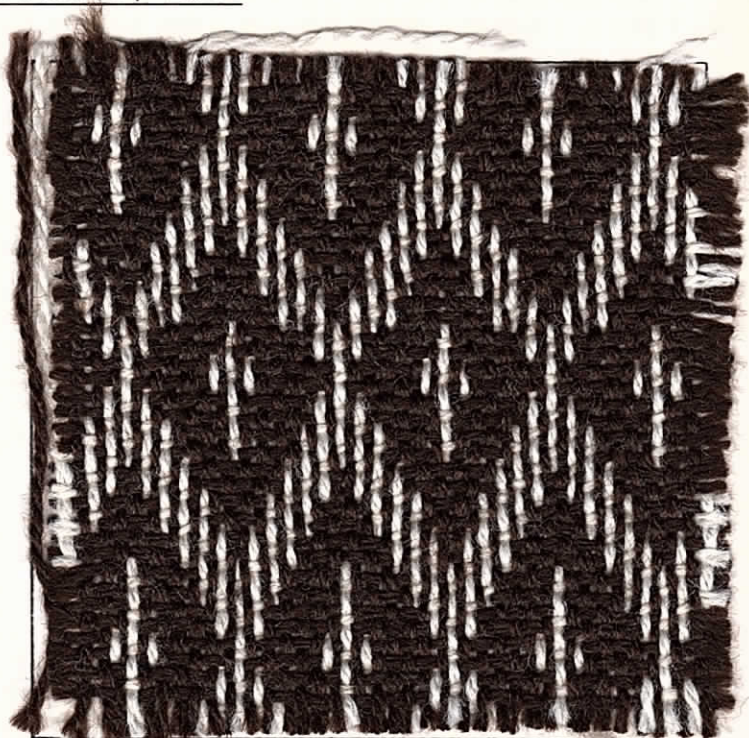
This double two-tie unit weave was one we saw woven by Loretta Mueller of Tarzania, CA. It is an unusual combination of double and single layer fabric.

WARP AND WEFT:

The yarn used is 8/2 worsted of 70% wool and 30% nylon. Two colors are used, natural and bark brown.

REED USED:

A 10-dent reed was used. It was sleyed 2 per dent for 20 warps per inch.



THREADING DRAFT:

8	X					X							
7				X			X						
6			X					X					
5			X						X				
4		X								X			
3	X											X	
2	0		0		0		0		0		0		0
1		0		0		0		0		0		0	

X - natural
0 - bark brown

DRAFTS & DESIGNS

Published monthly (except July & August) by Robin & Russ Handweavers, 533 N Adams St, McMinnville, OR 97128.

SUBSCRIPTIONS: \$10.00 per year. Canadian is \$11.00 per year, and foreign subscriptions are \$12.00 per year. Back issues or single copies are \$1.25 each, plus 20¢ pp. Yearly subscriptions start with the September issue. If you subscribe after September, back issues from September on will be mailed to you.

VOLUME 27, No. 2. October, 1984

TIE-UP DRAFT:

8				0	0				0	0	0
7		0			0	0					0
6				0	0	0	0				
5		0				0	0	0			
4				0			0	0	0		
3		0						0	0	0	
2		0	0	0							
1	0	0		0							
	1	2	3	4	5	6	7	8	9	10	11

TREADLING SEQUENCE:

This is a two-shuttle weave. Use natural on treadles 2 and 4. Use bark brown on all other rows.

Notice that every other row uses two treadles at one time. These rows are hyphenated. The left foot treadles the first four treadles while the right foot uses the pattern treadles five through eleven. The treadling is written four rows at a time.

1. Treadle 1-5, 2, 3-5, 4.
2. Treadle 1-6, 2, 3-6, 4.
3. Treadle 1-7, 2, 3-7, 4.
4. Treadle 1-8, 2, 3-8, 4.
5. Treadle 1-9, 2, 3-9, 4.
6. Treadle 1-10, 2, 3-10, 4.
7. Treadle 1-9, 2, 3-9, 4.
8. Treadle 1-8, 2, 3-8, 4.
9. Treadle 1-7, 2, 3-7, 4.
10. Treadle 1-6, 2, 3-6, 4.
11. Treadle 1-5, 2, 3-5, 4.
12. Treadle 1-11, 2, 3-11, 4.
13. Treadle 1-10, 2, 3-10, 4.
14. Treadle 1-11, 2, 3-11, 4.

End of one complete repeat. Repeat as desired.

COST OF THE YARNS:

The 8/2 worsted is a blend of 70% wool and 30% nylon. It has about 2240 yards per pound and the price is \$6.80 per pound.

The natural comes on about 14 oz. cones while the brown comes on 2 lb. cones. We have about 10 colors available in this yarn.

COST OF THE FABRIC:

The 10-yard long, 40" wide warp used 1 lb. 14 oz. of each of the natural and the bark brown for a total of \$25.50 or \$2.55 per yard.

The weft used 2 lb. 7 oz. of each of the colors for a total of \$33.15 or \$3.75 for each of the 8-5/6 yards of finished fabric.

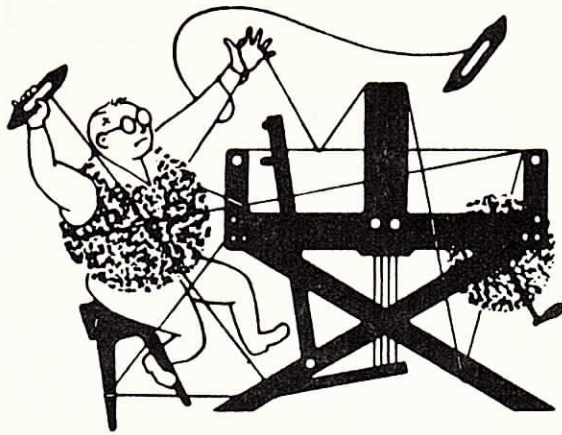
- WARP COST PER YARD \$2.55
- WEFT COST PER YARD 3.75
- FABRIC COST PER YARD \$6.30

MORE ABOUT THE FABRIC:

Because of its double-layer construction this fabric is set densely in the reed. Nevertheless the weft tends to pull in and we found that it was necessary to weave with a stretcher or temple. Other than that we had no problems with either the yarn or the treadling.

You will notice that we tried to write the treadling in a way that would be easy and logical to use. The left foot consistently treadles 1, 2, 3, 4 while the right foot stays on the same pattern treadle for two rows before changing. Two treadles are used simultaneously because this draft would need sixteen treadles if they were used singly.

This fabric would make beautiful a coat or jacket. The light back is also attractive and could be utilized in a reversible design. The absence of floats on either surface would also make this a good furnishing fabric for upholstery, pillows, and cushions.



drafts and designs

TM

a guide for 5 to 12 harness weaves

VOLUME 27, No. 3 November, 1984

CHECKS AND BASKETS

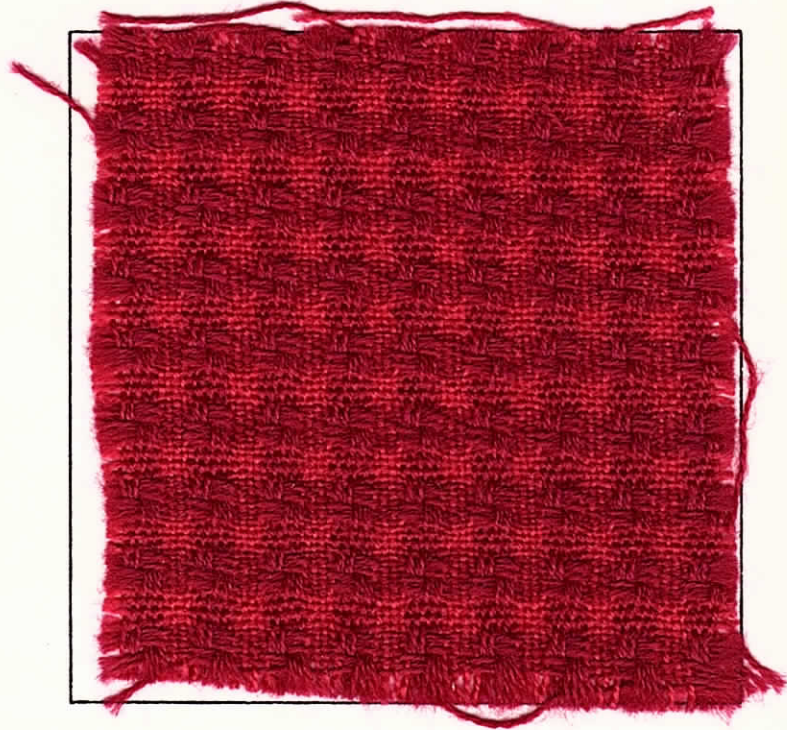
This 6-harness tabby and basket-weave variation was featured in one of Malin Selander's books. She is a Swedish designer who has published several excellent books.

WARP AND WEFT:

The warp and weft are both 2/18's worsted wool in two shades; burgundy red #20, and rose pink #39.

REED USED:

A 15-dent reed was double-sleyed 2 per dent for 30 warps per inch.



THREADING DRAFT:

6	o	o				o	o				
5		o	o				o	o			
4			o	o				o	o		
3				o	o			o	o		
2					x	x			x	x	
1						x	x			x	x

o - burgundy red
x - rose pink

DRAFTS & DESIGNS

Published monthly (except July & August) by Robin & Russ Handweavers, 533 N Adams St, McMinnville, OR 97128.

SUBSCRIPTIONS: \$10.00 per year.

Canadian is \$11.00 per year, and foreign subscriptions are \$12.00 per year. Back issues or single copies are \$1.25 each, plus 20¢ pp. Yearly subscriptions start with the September issue. If you subscribe after September, back issues from September on will be mailed to you.

VOLUME 27, Number 3. November, 1984

TIE-UP DRAFT:

6			0	0		0
5			0	0	0	
4	0	0				0
3	0	0			0	
2		0		0		0
1	0		0		0	
	1	2	3	4	a	b

TREADLING SEQUENCE:

This is a two-shuttle weave.

1. Treadle 1, 2, 1, 2 - burgundy red
2. Treadle 3, 4, 3, 4 - burgundy red
3. Treadle a, b, a, b - rose pink

End of one complete repeat. Repeat as desired.

COST OF THE YARNS:

Both warp and weft in this fabric are from our regular line of 2/18's worsted wool. These are excellent quality wools spun in England. They are moth-proofed and fast color. We carry 39 colors in the 2/18's and 22 colors in a heavier weight 12/2's. The 18/2 has 5,040 yards per pound and the 12/2 has 3,300. Both weights are \$16.00 per pound.

These wools are clothing weight, the 18/2 is especially good for tartans when sett 30-36 per inch and woven in twill. It is available in tartan colors.

COST OF THE FABRIC:

Our 10-yard long, 40" wide warp took 2 lb. 6½ oz. of 2/18's worsted for a total of \$38.50 or \$3.83 per yard.

The fabric off the loom measured 9¼ yards. It used 2 lb. 8 oz. of weft for a total of \$40.00 or \$4.32 per yard.

WARP COST PER YARD \$3.83

WEFT COST PER YARD 4.32

FABRIC COST PER YARD \$7.85

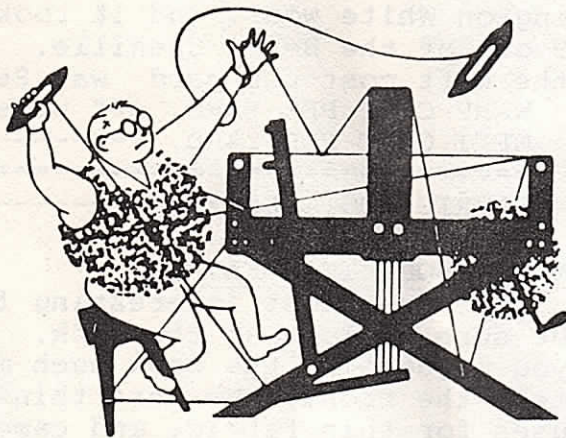
MORE ABOUT THE FABRIC:

This fabric has a wonderful surface texture accented by the two shades of wool. The basket weave squares intersect in the center to give a pinwheel effect.

We had no problem weaving this fabric. We used a straight twill selvege threading on each edge. The worsted wool is strong, smooth and a pleasure to weave.

This fabric should be finished when it comes off the loom. We suggest washing it by hand or gentle cycle with Ivory Snow or mild detergent. Rinse it, squeeze or spin out the excess moisture and then allow it to dry. Steampressing by hand or by a drycleaner is the final step to a beautiful fabric.

There are numerous exciting color combinations possible with these yarns. Blue green #36 and Monday blue #27 is a good combination. Vicuna tan #38 and natural scoured white #8 is a neutral combination. An olive combination is dark avocado #2 and khaki drab #23. Olive Green #25 could be substituted for the dark avocado for a monotone look. Of course, white or black could be used with a color for a more contrasting look.



drafts and designs



a guide for 5 to 12 harness weaves

VOLUME 27, No. 5, January, 1985

RED RASPBERRY PARFAIT:

This interesting fabric is a five harness weave, giving an extremely interesting surface texture.

THREADING DRAFT:

5	X			X
4		X		X
3			X	
2			X	X
1			X	

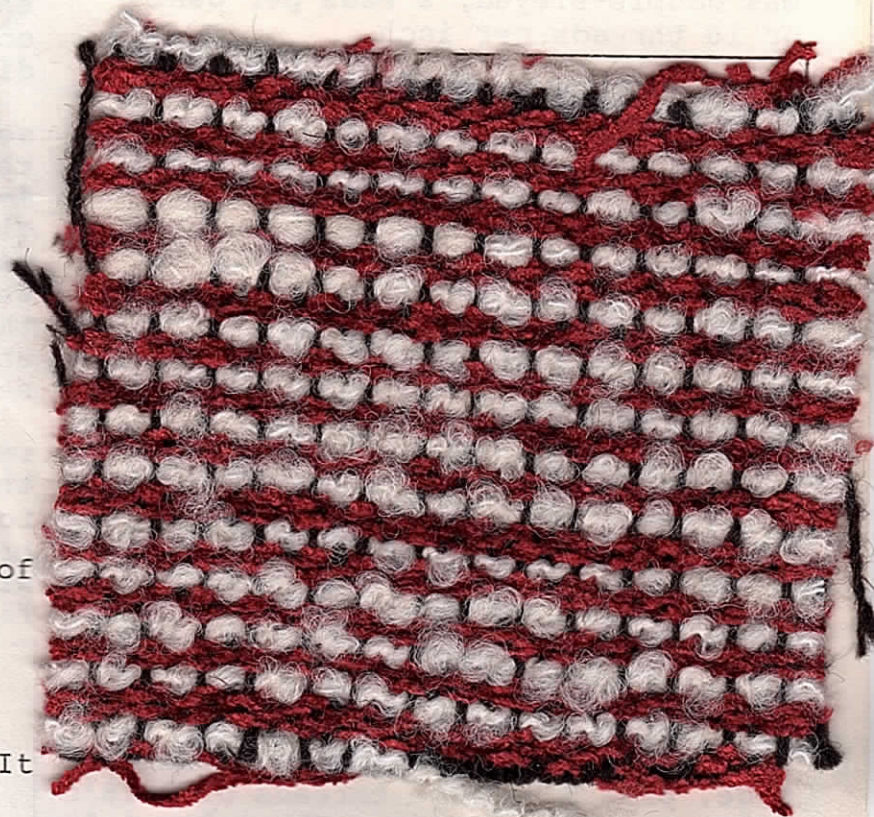
WARP:

Our warp is a 2 ply blended yarn of 60% mohair, 35% wool, and 5% nylon. This blend is for strength with the addition of the nylon. It is called African Brown, and has about 1550 yards per lb., and comes on about 1 lb. cones, and is \$8.00 per lb. It is an import from England.

WEFT:

There are two threads in the weft. One is an 8 cut rayon chenille, called "Berry" which has approximately 1,000 yards per lb. It came on about 2-1/2 lb. cones, and the price is \$6.80 per lb. We can wind off 1/2 lb. tubes.

The second weft thread is a wool yarn I located in England 1-1/2 years ago. It is a novelty yarn, spun for a German sports-wear manufacturer. We



received a very good buy on it, and it sells for \$12.00 per lb. It is one of 10 colors, has 560 yards per lb., It is 60% wool, and 40% acrylic binder. The acrylic binder prevents the wool novelty twist from shrinking. This is the beauty of this yarn, and it is a large loop on the binder. The binders are all dyed to match the loops also. It is on about 1 lb. cones.

DRAFTS AND DESIGNS:

Published monthly (except July & August) by Robin & Russ Handweavers 533 N. Adams St. McMinnville Ore. 97128

SUBSCRIPTIONS: \$10.00 per year. Canadian is \$11.00 per year and foreign subscriptions are \$12.00 per year. Back issues or single copies are \$1.25 each, plus 20¢ postage. Yearly subscriptions start with the September issue. If you subscribe after September back issues from September on will be mailed to you.

VOLUME 27, No. 5, January, 1985

REED USED:

An 8 dent reed was used, and it was double-sleyed, 2 ends per dent or 16 threads per inch.

TREADLING SEQUENCE:

A very easy treadling sequence of 5 threads. Here it is:

1. Treadle # 1, Berry Chenille
2. Treadle # 2, Berry Chenille
3. Treadle # 3, Berry Chenille
4. Treadle # 4, Berry Chenille
5. Treadle # 5, Washington White Novelty wool.

Repeat over and over as desired.

TIE-UP DRAFT:

5		X			
4				X	
3			X		
2	X				
1				X	
	1	2	3	4	5

COST OF THE FABRIC:

Our warp was set-up on the loom 44" wide, plus 5 selvage threads of 3/18's nylon stitching twine. The nylon twine was threaded 3 in the first dent, and two in the 2nd dent..

It took 4 lbs. 2-1/2 oz. of the African Brown Blended wool for the 8 yard warp, 44" wide. The total warp cost was \$34.75, or the cost per yard was \$4.35 per yard.

The weft cost was a total of \$46.73 for 7 yards and 6" of finished fabric. It took 1 lb. and 12 oz. of the Wash-

ington White wool, and it took 3 lbs. 9 oz. of the Berry Chenille. Thus, the weft cost per yard was \$6.68.

WARP COST PER YARD, 44" wide-- \$ 4.35

WEFT COST PER YARD, ----- 6.68

=====

FABRIC COST PER YARD----- \$11.03

MORE ABOUT THIS FABRIC:

This is a most interesting fabric. Be sure to look at the back. Some of you might like the back much more than the front. We were thinking of uses for this fabric, and came up with several. It could be used in a poncho using either the front or the back as the main portion of the fabric, and reversing part, cuffs or colars of the reverse side would be interesting.. It would make an interesting bedspread, or a heavy tailored jacket. I think the back would make an interesting chair-upholstery for the seats of dining room chairs, etc.

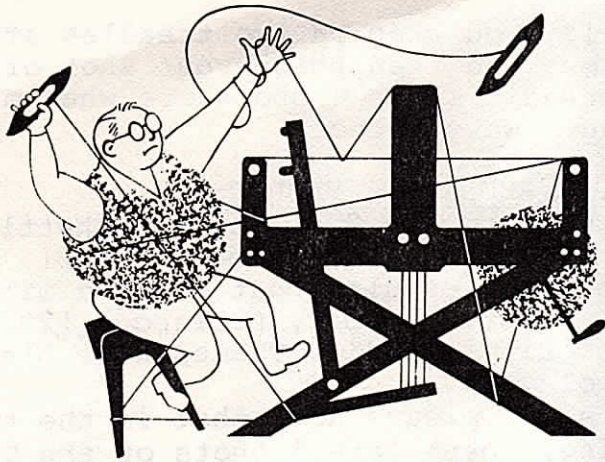
Janice wove this, and she timed herself on the loom set-up. She set up the loom completely, ready to weave in 4-1/2 hours. And, providing someone else winds the bobbins, she timed the weaving, and it took 6-1/2 hours to weave the 7 yards 6" of fabric. I thought this was extremely fast, and she said it was the fastest she ever set-up a loom like this.

The fabric is quite heavy, and I really think the back side would be the more durable for upholstery and for clothing. She never had one broken warp thread, nor any problems with the weft, so it should be a fairly easy fabric to weave.

TWO, One Week SUMMER WORKSHOPS, with Mr. Jack Womersley, head of weaving department of Bradford College, Bradford, England as the instructor.

The first two weeks of July are the dates, Monday through Friday, and we will have 10 to 15 different projects on the loom, and you will weave as many samples as possible during this time, for your own use. There will be lectures each day, and many interesting projects.

For further information, write to: ROBIN AND RUSS HANDWEAVERS, 533 No. Adams St., McMinnville, Ore. 97128.



drafts and designs

a guide for 5 to 12 harness weaves

VOLUME 27, No. 7. March, 1985

WILLOWLY WAVED PIQUE:

This most fascinating fabric is a 7 harness pattern, and I think the right name would be WAVED PIQUE.

WARP:

- X - 2/12's worsted, Natural # 8
- W - 4/13's superwash, Wine # 32
- H - 4/13's superwash, Heather # 162
- R - 4/13's superwash, Wild Rose # 118

We used 2/12's worsted in the fabric as the main background thread, and the 3 colors of the superwash worsted wool are the tie-down threads.

WEFT:

- B - Heavy, pencil thick berber wool, which we used doubled on the bobbin.
- A - Thames Nile, a natural white color and this is a blend of mohair, wool, alpaca and nylon.

REED USED:

An 8 dent reed was used, and it was sleyed 3 ends per dent except for the very first thread which was in one dent by itself. It comes to 24 threads per inch, and you have 2 ends of 2/12's and 1 end of 4/13's superwash wool in each dent.

THREADING DRAFT:

7		H			H					
6				R						
5							R			
4					H			H		
3						W				W
2	X	X	X	X	X	X	X	X	X	X
1	X	X	X	X	X	X	X	X	X	X



TIE-UP DRAFT:

7				0	0						
6		0	0								
5						0	0				
4								0	0		
3	0										
2		0		0		0	0		0		
1			0		0	0		0		0	
		1	2	3	4	5	6	7	8	9	10

DRAFTS & DESIGNS

Published monthly (except July & August) by Robin & Russ Handweavers, 533 N. Adams St., McMinnville, Oregon, 97128.

SUBSCRIPTIONS: \$10.00 per year. And Canadian is \$11.00 per year, and foreign subscriptions are \$12.00 per year. Back issues or single copies are \$1.25 each, plus 22¢ postage. Yearly subscriptions start with the September issue. If you subscribe after September, back issues from September on will be mailed to you.

VOLUME 27, Number 7. March, 1985

KEY TO THREADS USED IN THE WARP:

- X - 2/12's worsted, NATURAL, # 8.
- W - 4/13's SUPERWASH, WINE, # 32.
- H - 4/13's SUPERWASH, HEATHER, # 162
- R - 4/13's SUPERWASH, WILD ROSE, # 118

Please note that the superwash is a worsted spun wool yarn, which is machine washable, and it has been treated, so it will not itch or irritate those who are allergic to wool.

TREADLING SEQUENCE:

There are 22 shots in each complete pattern sequence, and we will write this out in full, because of the fact we had to use two treadles together for 4 of these shots, and 2 of them were the very heavy, doubled, berber wool.

1. Treadle # 2 -- Thames Nile
2. Treadle # 3 -- Thames Nile
3. Treadle # 4 -- Thames Nile
4. Treadle # 5 -- Thames Nile
5. Treadles # 1 & # 2 -- Thames Nile
6. Treadles # 1 & # 3 -- Thames Nile
7. Treadle # 4 -- Thames Nile
8. Treadle # 5 -- Thames Nile
9. Treadle # 2 -- Thames Nile
10. Treadle # 3 -- Thames Nile
11. Treadle # 6 -- DOUBLED BERBER
12. Treadle # 7 -- Thames Nile
13. Treadle # 8 -- Thames Nile
14. Treadle # 9 -- Thames Nile
15. Treadle # 10 -- Thames Nile
16. Treadles # 1 & # 7 -- Thames Nile
17. Treadles # 1 & # 8 -- Thames Nile
18. Treadle # 9 -- Thames Nile
19. Treadle # 10 -- Thames Nile
20. Treadle # 7 -- Thames Nile
21. Treadle # 8 -- Thames Nile
22. Treadle # 6 -- DOUBLED BERBER

End of one complete pattern repeat, and do repeat over and over as desired.

Also note in our numerical sequence given above on # 5 and # 6 and # 16 and

17, you step on two treadles at one time, and then throw your shot of weft thread. These 4 shots are what make your wavy effect.

MORE ABOUT THE FABRIC:

We used the 27" long ski-shuttle for the doubled, heavy, berber wool. We used the regular boat shuttle with the 4" plastic bobbin, Leclerc # 120, for the single end of Thames Nile blended wool yarn.

Also, please note that in the treadling, there were 4 shots of the Thames Nile blended wool yarn, where we had to step on 2 treadles at a time for that shot of weft. It was either do this, or have a loom with 13 treadles, and on this set-up, our loom only had 10 treadles.

On many pique weaves, they often say you should have two warp beams, but I think that the wool was so elastic here, that we were able to do it only on one warp beam, and we had absolutely no problems of slackness of any warp threads. Perhaps if we had used a cotton or rayon or linen thread we might have had problems with a slackening of the tie-down threads, but as this was all wool, it was not a problem.

COST OF THE THREADS USED:

The 2/12's worsted is from our standard stock line, and it has 3360 yards per lb., and it is \$16.00 per lb. We have 22 colors in this size.

The superwash wool, in the 3 colors used (4-13's) comes on about 14 oz. cones, and it is \$20.00 per lb. We have 30 colors of this in stock all the time.

The heavy pencil thick, berber wool comes on about 1 lb. cones, and it is \$6.80 per lb.

The Thames Nile, natural white blend comes on about 1 lb. cones, it is \$9.60 per lb., and has about 1600 yards per pound.

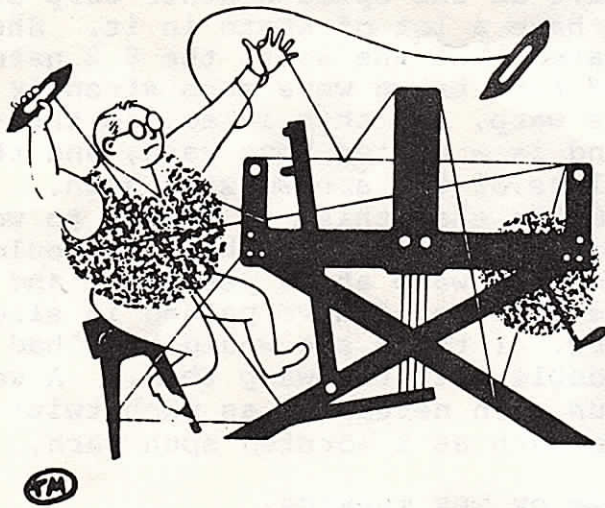
COST OF THE FABRIC:

We did an 8 yard warp, 42" wide. It wove down to 38-3/4" wide. Our total warp cost was \$41.25 and the cost per yard was \$5.16.

Our total weft cost for the 6 yards and 7 inches was \$73.15, and so the weft cost per yard was \$7.58.

The fabric cost per yard was \$12.74.
WARP COST PER YARD, 42" wide \$5.16
WEFT COST PER YARD 38-3/4" 7.58
=====

FABRIC COST PER YARD-----	\$12.74
---------------------------	---------



drafts and designs

a guide for 5 to 12 harness weaves

VOLUME 27, Number 10, June, 1985:

NAVAHO DIAMONDS:

This is a double, 2 tie unit weave, on a 6 harness point twill. It is from the monograph by the same name.

WARP:

Our warp is a 100% Shetland wool, 2/3 Run, with 2400 yards per lb. It is called Spice-Heather.

WEFT:

There are two threads used in the weft. One is the 8/2 worsted in the natural color, and the other is the 2/8 or 8/2 worsted in a color which is called Bark Brown:

REED USED:

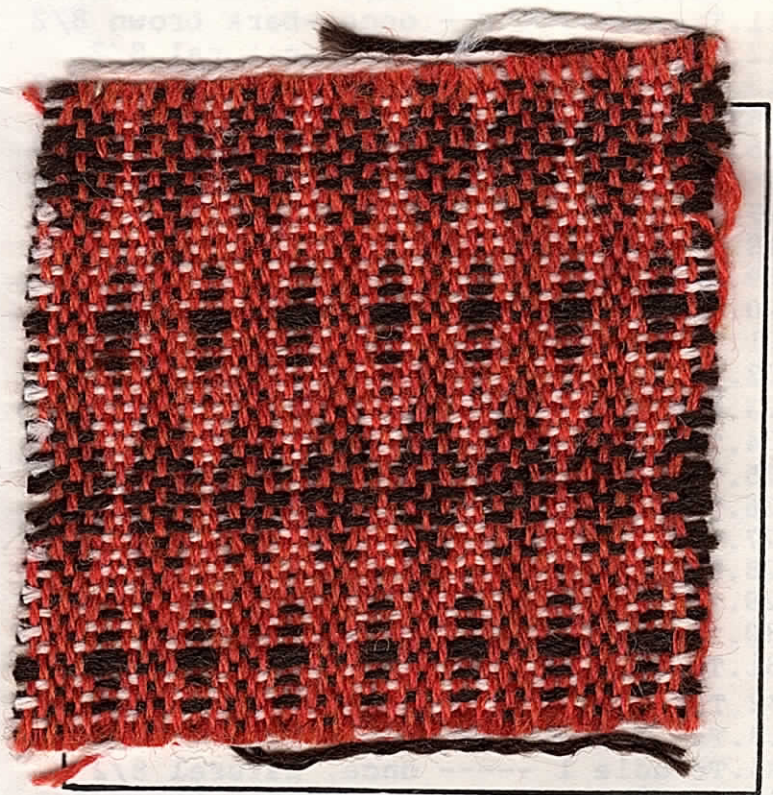
A 10 dent reed was used, and it was double sleyed, 2 ends per dent, or 20 threads per inch.

THREADING DRAFT:

6				0					
5			0		0		0		
4		0				0			
3	0						0		
2	0							0	
1									0

TIE UP DRAFT:

6	0		0	0	0					
5	0			0	0	0				
4	0				0	0	0			
3	0					0	0	0		
2	0	0	0							
1	0	0	0							
	1	2	3	4	5	6	7	8	9	10



TREADLING SEQUENCE:

Please note that there are 40 shots in one complete pattern repeat. Here is the sequence: Please note that half of the time in the treadling, you are using 2 treadles at one time, and the other 1/2 of the treadling, you are just using one thread, and one heddle.

1. Treadle 3 & 5 - once--bark brown 8/2
2. Treadle 1 ----- once--natural 8/2
3. Treadle 4 & 5 - once--bark brown 8/2
4. Treadle 2 ----- once--natural 8/2
5. Treadle 3 & 6 - once--bark brown 8/2

DRAFTS AND DESIGNS:

Published monthly (except July and August) by Robin & Russ Handweavers, 533 No. Adams St., McMinnville Ore. 97128.

SUBSCRIPTIONS: \$10.00 per year, and Canada is \$11.00 per year, and foreign are \$12.00 per year. Back issues or single copies are \$1.25 each, plus 22¢ postage. Yearly subscriptions start with the September issue. If you subscribe after September, back issues from September on will be mailed to you.

VOLUME 27, Number 10, June 1985:

- 6. Treadle 1 ----- once--natural 8/2
- 7. Treadle 4 & 6 - once--bark brown 8/2
- 8. Treadle 2 ----- once--natural 8/2
- 9. Treadle 3 & 7 - once--bark brown 8/2
- 10. Treadle 1 ----- once--natural 8/2
- 11. Treadle 4 & 7 - once--bark brown 8/2
- 12. Treadle 2 ----- once--natural 8/2
- 13. Treadle 3 & 8 - once--bark brown 8/2
- 14. Treadle 1 ----- once--natural 8/2
- 15. Treadle 4 & 8 - once--bark brown 8/2
- 16. Treadle 2 ----- once--natural 8/2
- 17. Treadle 3 & 9 - once--bark brown 8/2
- 18. Treadle 1 ----- once--natural 8/2
- 19. Treadle 4 & 9 - once--bark brown 8/2
- 20. Treadle 2 ----- once--natural 8/2
- 21. Treadle 3 & 10 once--bark brown 8/2
- 22. Treadle 1 ----- once--natural 8/2
- 23. Treadle 4 & 10 once--bark brown 8/2
- 24. Treadle 2 ----- once--natural 8/2
- 25. Treadle 3 & 9 - once--bark brown 8/2
- 26. Treadle 1 ----- once--natural 8/2
- 27. Treadle 4 & 9 - once--bark brown 8/2
- 28. Treadle 2 ----- once--natural 8/2
- 29. Treadle 3 & 8 - once--bark brown 8/2
- 30. Treadle 1 ----- once--natural 8/2
- 31. Treadle 4 & 8 - once--bark brown 8/2
- 32. Treadle 2 ----- once, natural 8/2
- 33. Treadle 3 & 7 - once, bark brown 8/2
- 34. Treadle 1 ----- once, natural 8/2
- 35. Treadle 4 & 7 once--bark brown 8/2
- 36. Treadle 2 ----- once--natural 8/2
- 37. Treadle 3 & 6 once--bark brown 8/2
- 38. Treadle 1 ----- once--natural 8/2
- 39. Treadle 4 & 6 once--bark brown 8/2
- 40. Treadle 2 ----- once--natural 8/2.

This is the end of one complete pattern repeat. Repeat over and over as desired.

MORE ABOUT THE FABRIC:

Our weaver for our sample this month was Dori Trudel of Fullerton, California. She said that this was fairly hard to

weave as the spice heather warp seemed to have a lot of knots in it. She stated that the weft, the 8/2 natural and bark brown were much stronger than the warp, and this is so, as the shetland is a woolen spun yarn, and the 2 colors of 8/2 are worsted spun.

Other than this, it seemed to work fairly well. Possibly, we could have used the warp at 16 per inch, and then the weft would have packed in slightly more. I think she would have had less trouble with the warp then.. A woolen spun yarn never has as much twist or strength as a worsted spun yarn.

COST OF THE THREADS:

Our shetland wool yarn in spice-heather is \$6.00 per lb., and we have about 50 to 100 lbs. left at this price. The 2/8's worsted yarn in the natural and in the bark-brown are both \$6.80 per lb. We have about 10 colors in the 2/8's worsted at \$6.80 per lb. It comes on about 1 lb. 2 oz. cones or thereabouts. The shetland has about 2400 yards per pound, and the 2/8's worsted has 2240 yards per pound.

COST OF THE FABRIC:

It took 3 lbs. 3 oz. of shetland wool for warp, at \$6.00 per lb., or our total warp cost was \$19.13. The cost per yard comes to \$1.91 per yard.

In the weft, we used about 3 lbs. 3 oz. of both the bark brown and the natural in the weft. We had 10 yards of finished fabric from an 11 yard warp. It took 3 lbs. 3 oz. of each, and our cost comes to \$55.90. This makes the weft cost per yard come to \$5.59 per yard.

Warp cost per yard, 40"---	\$1.91
Weft cost per yard -----	5.59
=====	
fabric cost per yard	\$7.50

MORE ABOUT THE FABRIC (continued)

I think it is important that one uses a firm even beat on this. I shall suggest that you beat with the shed open, change to the next shed, and beat lightly again before you throw the shuttle.

This warp thread is I believe a 2/12's weight, and really was designed as a knitting thread rather than a weaving thread, but we have also used it in our weaving many times.