

# drafts and designs



*a guide for 5 to 12 harness weaves*

VOLUME 28, Number 1, September 1985

A CELTIC CROSS IN PLAIN WEAVE,  
SET OFF BY A WARP FLOAT OF HUCK  
LACE.

WARP THREAD USED:

Our warp thread is a 10/2 bleached, dry-spun scottish linen. It has 1500 yards per lb., comes on about 1 lb. tubes, and it is \$9.60 per lb.

WEFT THREAD USED:

Our weft thread was also the 10/2 bleached, dry-spun scottish linen.

REED USED:

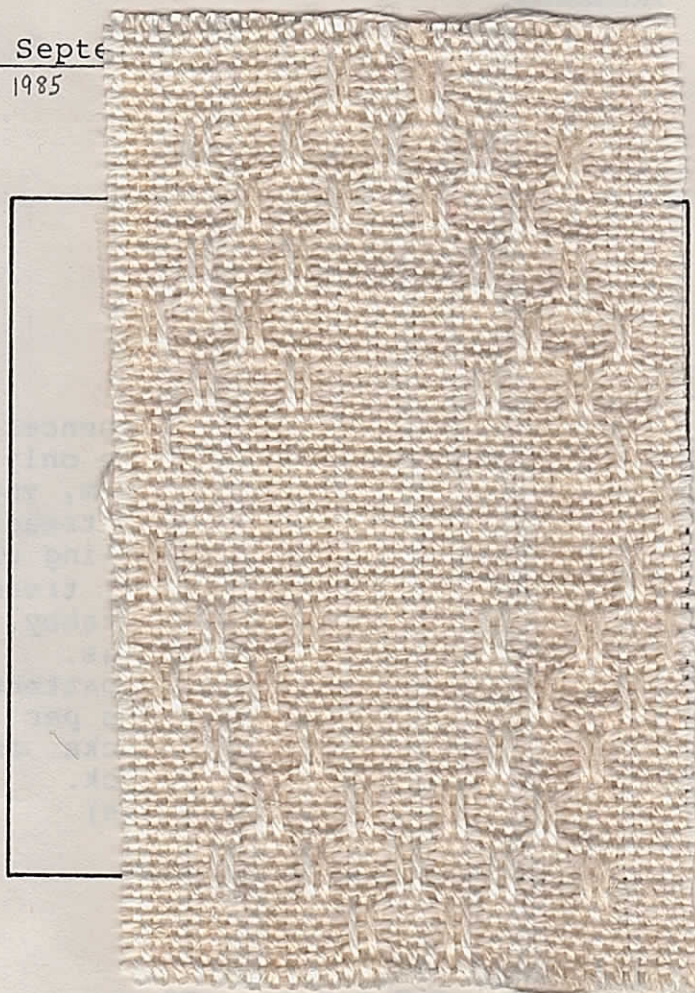
A 10 dent reed was used and it was double sleyed--2 ends per dent, or 20 threads per inch.

COST OF THE THREADS USED:

We have this 10/2 Bleached, Dry Spun Linen in stock. It has 1500 yards per lb., and the price for the bleached white is \$9.60 per lb. We also have it in natural, and on 1 lb. tubes, and the price is \$8.00 per lb.

THREADING DRAFT:

8					X X			X X				
7								X X				
6				X X						X X		
5			X X		X X				X X		X X	
4	X X		X X						X X		X X	
3		X X										
2	X X X	X X X	X X X	X X X	X X X	X X X	X X X	X X X	X X X	X X X	X X X	X X X
1		X X X	X X X	X X X	X X X	X X X	X X X	X X X	X X X	X X X	X X X	X X X
	B	A	B	C	D	C	F	E	F	C	D	C



Start



DRAFTS AND DESIGNS:

Published monthly (except July & August) by Robin & Russ Handweavers, 533 N. Adams St., McMinnville, Ore. 97128.

SUBSCRIPTIONS: \$10.00 per year. Canadian is \$11.00 per year, and foreign subscriptions are \$12.00 per year. Back issues or single copies are \$1.25 each, plus 22¢ postage. Yearly subscriptions start with the September issue. If you subscribe after September, back issues from September on, will be sent to you.

VOLUME 28, No. 1, September 1985

TIE-UP FOR 8 HARNESS LOOMS WITH 11 TREADLES:

8		0		0					0	0		
7	0		0		0							0
6		0						0		0		
5	0								0			0
4					0		0			0		
3					0		0		0			0
2	0		0		0		0		0			0
1		0		0		0		0		0		
	1	2	3	4	5	6	7	8	9	10	11	
									A	B		

TREADLING SEQUENCE:

There are two treadling sequences for this pattern. If you have only 10 treadles on your 8 harness loom, you sometimes have to step on two treadles at one time. Our first treadling which is given here used eleven (11) treadles, with 9 for pattern and 2 for tabby. I will give you both treadlings.

There are 80 shots in each pattern repeat, in blocks of 5 threads per block. I will number the blocks, and give the 5 shots for each block.

- Block 1, A,1,A,1,A (5 shots)
- Block 2, B,2,B,2,B ""
- Block 3, A,3,A,3,A ""
- Block 4, B,4,B,4,B ""
- Block 5, A,5,A,5,A ""
- Block 6, B,6,B,6,B ""
- Block 7, A,7,A,7,A ""
- Block 8, B,8,B,8,B ""
- Block 9, A,9,A,9,A ""
- Block 10, B,8,B,8,B ""
- Block 11, A,7,A,7,A ""
- Block 12, B,6,B,6,B ""
- Block 13, A,5,A,5,A ""
- Block 14, B,4,B,4,B ""
- Block 15, A,3,A,3,A ""
- Block 16, B,2,B,2,B ""

End of pattern repeat for one pattern.

If using in mats, you would have to add a block of A,1,A,1,A to balance the pattern. This treadling, you use if you have 11 treadles on your loom.

TIE-UP DRAFT, IF LOOM HAS ONLY 10 TREADLES:

8		0	0						0	
7				0	0					0
6	0		0						0	
5				0		0		0		
4	0	0							0	
3						0	0		0	
2					0	0	0	0		0
1	0	0	0	0					0	
	1	2	3	4	5	6	7	8	9	10
									A	B

TREADLING SEQUENCE FOR LOOM WITH ONLY 10 TREADLES:

On this treadling, you will sometimes have to step on two treadles at one time to weave the pattern, as per our sample. We will give this in a block sequence also, and where there are 2 numbers separated by a - , then you will step on those two treadles at the same time.

- Block 1 - A,5,A,5,A
- Block 2 - B,4,B,4,B
- Block 3 - A,6,A,6,A
- Block 4 - B,6,B,6,B
- Block 5 - A,6-7,A,6-7,A
- Block 6 - B,2,B,2,B
- Block 7 - A,7,A,7,A
- Block 8 - B,1,B,1,B
- Block 9 - A,8,A,8,A
- Block 10- B,1,B,1,B
- Block 11- A,7,A,7,A
- Block 12- B,2,B,2,B
- Block 13- A,6-7,A,6-7,A
- Block 14- B,3,B,3,B
- Block 15- A,6,A,6,A
- Block 16- B,4,B,4,B

END OF ONE COMPLETE PATTERN REPEAT.

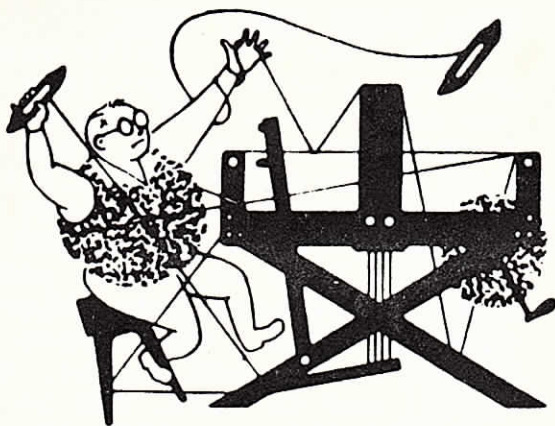
COST OF THE FABRIC:

Believe it or not, we did a 25 yard warp, 40" wide, and on this 25 yard warp, we wove 3 different designs. Each design was the same treadling, but we had a different tie-up for each sample. You will see the other 2 designs in later issues.

In 25 yards of fabric, it took 13-1/3 pounds of 10/2 linen. From our 24 yards of weft, we used 12 lbs. of the 10 2 bleached linen. Thus, we can determine a fabric cost.

Warp cost per yard, 40" wide-- \$5.12  
 Weft cost per yard, 39" wide-- 4.80  
 =====  
 FABRIC COST PER YARD ----- \$9.92





# drafts and designs



## a guide for 5 to 12 harness weaves

VOLUME 28, No. 2, October 1985

### INTERMITTANT:

The interesting sample we have for you this month is a most interesting twill variation. It was suggested by a sample from Mary Kirby's book, *Designing on the Loom*.

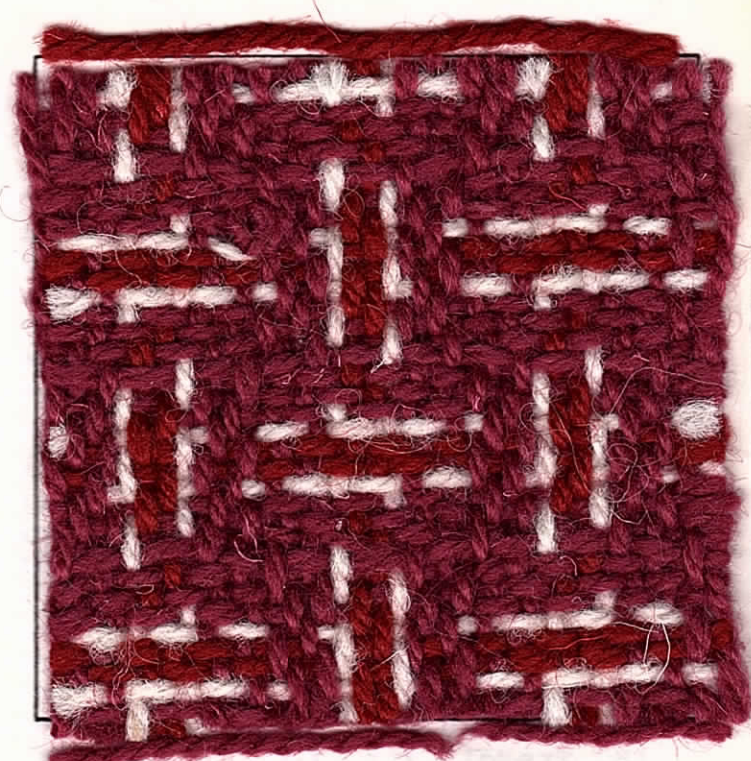
### WARP:

Our warp thread is a 2 ply worsted yarn, I found on my last trip to England. We have it available in white and 5 other colors. We used 3 colors in the warp on this project.

- R - 2 ply rose, English worsted.
- W - 2 ply white, English Worsted
- X - 2 ply red, English worsted

### WEFT:

The same 2 ply English worsted yarns that were also used in the weft, and there were 3 colors used in all. They were rose, white, and red.



### THREADING DRAFT:

8				R		W		R	
7				R		X		R	
6				R		X		R	
5				R		W		R	
4			R		W		R		
3		R		X		R			
2	R		X		R				
1	R		W		R				

### TIE-UP DRAFT:

8	0	0	0				0	0	
7	0	0	0	0			0		
6	0	0	0		0		0		
5	0	0	0	0			0		
4	0				0	0	0	0	
3		0		0	0		0	0	
2		0			0	0	0	0	
1				0	0	0	0	0	
	1	2	3	4	5	6	7	8	9 10
									A B

### KEY TO COLORS IN THE THREADING DRAFT;

- R - 2 ply rose, English worsted.
- W - 2 ply white, English worsted.
- X - 2 ply red, English worsted



### DRAFTS AND DESIGNS:

Published monthly (except July and August) by Robin & Russ Handweavers, 533 North Adams Street, McMinnville Oregon, 97128.

SUBSCRIPTIONS: \$10.00 per year, and Canada is \$11.00 per year, and foreign are \$12.00 per year. Back issues or single copies are \$1.25 each, plus 22¢ postage. Yearly subscriptions start with the September issue. If you subscribe after September, back issues from September on will be mailed to you.

VOLUME 28, Number 2, October, 1985:

### REED USED

We used a 5 dent reed, and sleyed it 2 ends per dent, or 10 threads per inch.

### TREADLING SEQUENCE:

There are 24 shots in each complete pattern repeat. I will give you the complete treadling sequence herewith.

1. Treadle # 1, rose, 2 ply worsted
2. Treadle # 2, rose, 2 ply worsted
3. Treadle # 3, rose, 2 ply worsted
4. Treadle # 4, rose, 2 ply worsted
5. Treadle # 1, white, 2 ply worsted
6. Treadle # 2, red, 2 ply worsted
7. Treadle # 3, red, 2 ply worsted
8. Treadle # 4, white, 2 ply worsted
9. Treadle # 1, rose, 2 ply worsted
10. Treadle # 2, rose, 2 ply worsted
11. Treadle # 3, rose, 2 ply worsted
12. Treadle # 4, rose, 2 ply worsted
13. Treadle # 5, rose, 2 ply worsted
14. Treadle # 6, rose, 2 ply worsted
15. Treadle # 7, rose, 2 ply worsted
16. Treadle # 8, rose, 2 ply worsted
17. Treadle # 5, white, 2 ply worsted
18. Treadle # 6, red, 2 ply worsted
19. Treadle # 7, red, 2 ply worsted
20. Treadle # 8, white, 2 ply worsted
21. Treadle # 5, rose, 2 ply worsted
22. Treadle # 6, rose, 2 ply worsted
23. Treadle # 7, rose, 2 ply worsted
24. Treadle # 8, rose, 2 ply worsted

END OF ONE COMPLETE PATTERN REPEAT. Do repeat over and over as desired.

### MORE ABOUT THE FABRIC:

This fabric was quite easy to weave and there were no problems. We did use an 8 thread selvage of nylon 18/3 stitching twine., and this selvage we threaded 8,7,6,5,4,3,2,1.

This English wool is not a top quality wool, but we purchased it because it was a size we liked, and also because there were some colors in it that we liked. We do have it in Mauve, in Purple, in Red, in Rose, in White, and in Rust, and in Navy.

I keep thinking that this pattern would be excellent for saddle blankets in this heavier thread, and of course, you could make it the color you desire, depending upon the color of the horse it is for.

In fine woolens, or worsteds, it makes beautiful yardages for suits for women, and I'm sure the right colors would make a nice sport coat.

Also, this wool is stronger than normal, as it is 80% wool, and 20% nylon.

### COST OF THE THREADS USED:

This 2 ply worsted spun yarn, is on about 1 lb. cones, we have 6 or 7 different colors, and it is \$8.00 per lb. We have perhaps 30 to 50 lbs. of each of the colors. There seems to be about 650 to 750 yards per lb.

### COST OF THE FABRIC:

We had an 8 yard warp, 40" wide and it took about 4 lbs. 6 oz. of this wool for warp. At \$8.00 per lb., this comes to \$35.00 or the cost per yard comes to \$4.38 per yard.

In the weft, it took a little more than it did in the warp, and of the 3 colors, it took 4 lbs. 9 oz. for us to weave 7-1/4 yards of fabric. So, our weft cost total was \$36.50 to weave the 7-1/4 yards. Thus, the weft cost per yard comes to about \$5.03 per yard.

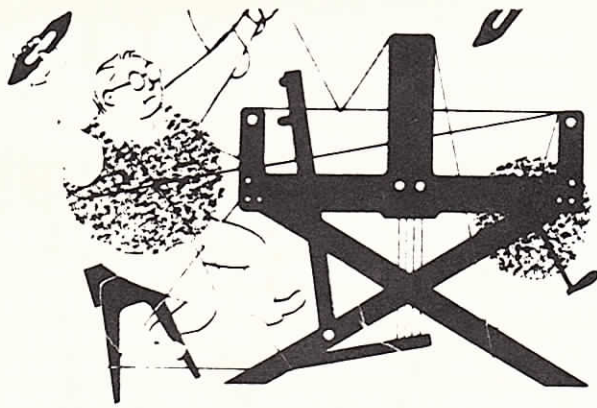
WARP COST PER YARD, 40" wide \$4.38

WEFT COST PER YARD, 38" wide 5.03

=====

FABRIC COST PER YARD ----- \$9.41





# drafts and designs



## *a guide for 5 to 12 harness weaves*

VOLUME 28, No. 3, November 1985

### CRIMSON ARROWHEADS:

A unique, 8 harness pattern that stimulates the fancy of those interested in indian folk-lore.

### WARP:

Our warp is 2 colors of the super-wash wool we stock. The colors are # 25, French Navy, and # 9 Scarlet.

### WEFT:

Our weft is the 2/13-1/4's SUPER-WASH WOOL, which we stock in 30 colors. This weft is color # 25, French Navy.

### REED USED:

An 8 dent reed was used, and it was double sleyed, 2 ends per dent, or 16 threads per inch.

### THREADING DRAFT:

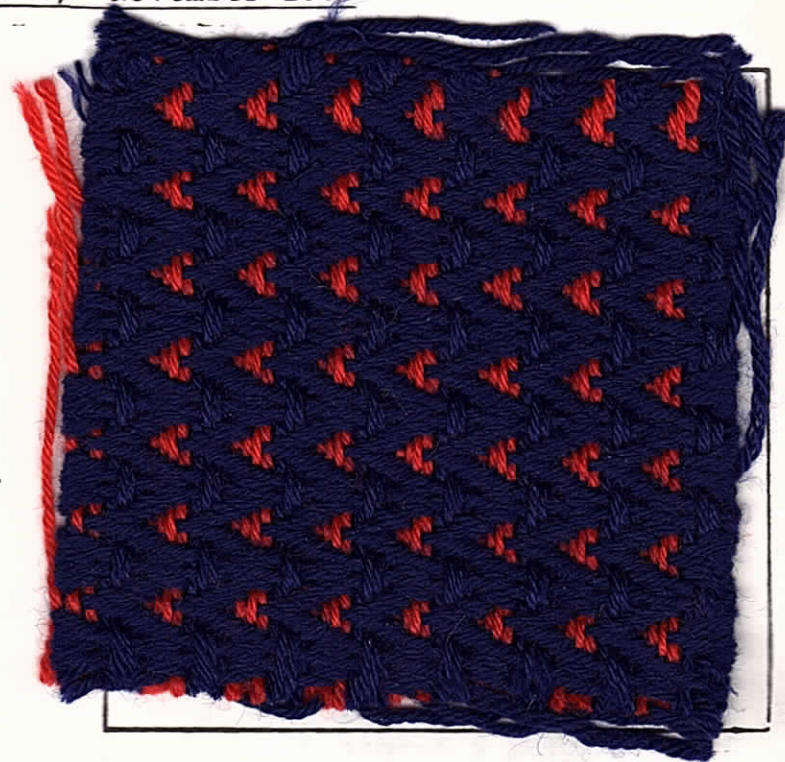
8	X					X			
7		X					X		
6			O					O	
5				O					O
4					O				
3						O			
2					X				X
1						X			

### KEY TO COLORS IN THE WARP:

There are two colors of the 2/13's 1/2 SUPERWASH WOOL, which we import from England. The colors are:

X -- color # 9, Scarlet

O -- color # 25, French Navy



### TIE-UP DRAFT:

8	O				O	O	O		O		
7	O	O				O	O	O			
6	O	O	O				O		O		
5	O	O	O	O					O		
4		O	O	O	O				O		
3			O	O	O	O			O		
2				O	O	O	O		O		
1					O	O	O	O	O		
		1	2	3	4	5	6	7	8	9	10



We found it a little hard to keep an even tension and an even beat on this. We do not know why. Thus, it is a little hard to keep all of the arrowheads the same size.

#### DRAFTS AND DESIGNS:

Published monthly (except July & August) by Robin & Russ Handweavers  
533 N. Adams St. McMinnville Ore.  
97128

SUBSCRIPTIONS: \$10.00 per year. Canadian is \$11.00 per year and foreign subscriptions are \$12.00 per year. Back issues or single copies are \$1.25 each, plus 20¢ postage. Yearly subscriptions start with the September issue. If you subscribe after September back issues from September on will be mailed to you.

VOLUME 28, No. 3, November 1985

#### TREADLING SEQUENCE:

Our weft was just one color of this worsted, french navy, and it was a very easy treadling, with 16 shots in every pattern repeat. I will write out the treadling sequence.

1. Treadle # 2---one shot
2. Treadle # 3---one shot
3. Treadle # 4---one shot
4. Treadle # 3---one shot
5. Treadle # 2---one shot
6. Treadle # 3---one shot
7. Treadle # 4---one shot
8. Treadle # 5---one shot
9. Treadle # 6---one shot
10. Treadle # 7---one shot
11. Treadle # 8---one shot
12. Treadle # 7---one shot
13. Treadle # 6---one shot
14. Treadle # 5---one shot
15. Treadle # 4---one shot
16. Treadle # 3---one shot

END OF ONE COMPLETE PATTERN REPEAT.

Do repeat over and over as desired.

#### MORE ABOUT THE FABRIC:

This is a fairly easy fabric to weave. It is almost, but not quite a walking treadling, and with just one color in the weft, it is quite fast to weave. Janice said that it took slightly less than an hour per yard to weave.

Also, we did use a 3/18's Stitching Nylon for selvages, and we had 8 threads on each selvage edge. Our warp was set up 40" wide in the reed, plus 16 selvage threads, so our warp was a total of 41" wide.

We used a firm, even, double beat, beating first with the shed open after we threw the shuttle across, and then we changed to the next shed and beat again, before we threw the shuttle.

#### MORE ABOUT THE THREADS:

Notice the nice soft hand of this fabric. This superwash wool has won several awards as being an outstanding yarn. It is useful for knitting as well as for weaving. Perhaps many of you remember or have seen the sweater, designed for Princess Diane of England, with all of the white sheep, and one of the black sheep only on the front of the sweater. And we also featured her in a specially designed sweater made of this yarn, on the cover of an issue of Warp and Weft about 6 months ago. It has about 1850 yards per pound, comes on 13 to 14 oz. cones only, and it is a machine-washable wool.

It has several other properties that I should mention also. First of all, it won the wool mark award in England as the most outstanding wool in England, it is an excellent knitting yarn, and works well on knitting machines, it has been waxed, cleared of any slubs, it is a non-shrinking wool, has an anti-pill quality, and also for those persons who are irritated by wool, a special finish, called "an anti-tickle" finish, has been applied, to make it useable by those who have an allergy to wool. It is priced at \$20.00 per lb., which is a very good price for this high quality wool.

#### COST OF THE FABRIC:

Our warp was 42" wide, plus one inch selvage, or 43" in all. When off the loom, we find that this has come down to a 42" width.

It took 3 lbs. 1 oz. for an 8-1/2 yard warp. This our total warp cost was \$61.25. came to \$7.21 per yard.

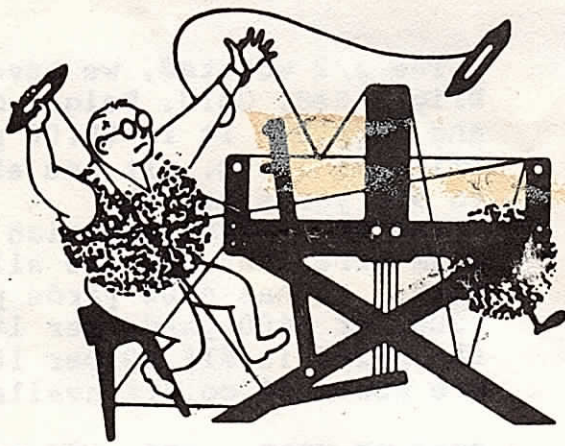
In the weft, it took 5 lbs. and 12 oz. of the french navy, to weave the 7 yards and 18" of fabric. We had about a one yard loom waste on this project.

Our total weft cost was \$115.00, so the cost per yard for the weft only was \$15.33 per yard.

This is an expensive fabric, but a high quality one.

WARP COST PER YARD-----	\$7.21
WEFT COST PER YARD-----	15.33
=====	
FABRIC COST PER YARD	\$22.54





# drafts and designs

TM

## *a guide for 5 to 12 harness weaves*

VOLUME 28, Number 4, December, 1985

### A SHAMROCK MEANS GOOD LUCK:

This 8 harness weave is from a sample featured by the Creative Weavers Guild of San Diego, Calif. in their bulletin, *Treadling Times*, in the March, 1966 issue.

### THREADING DRAFT:

8				X									X
7	X												X
6		X											X
5			X									X	
4				X							X		
3					X					X			
2						X			X				
1					X		X						

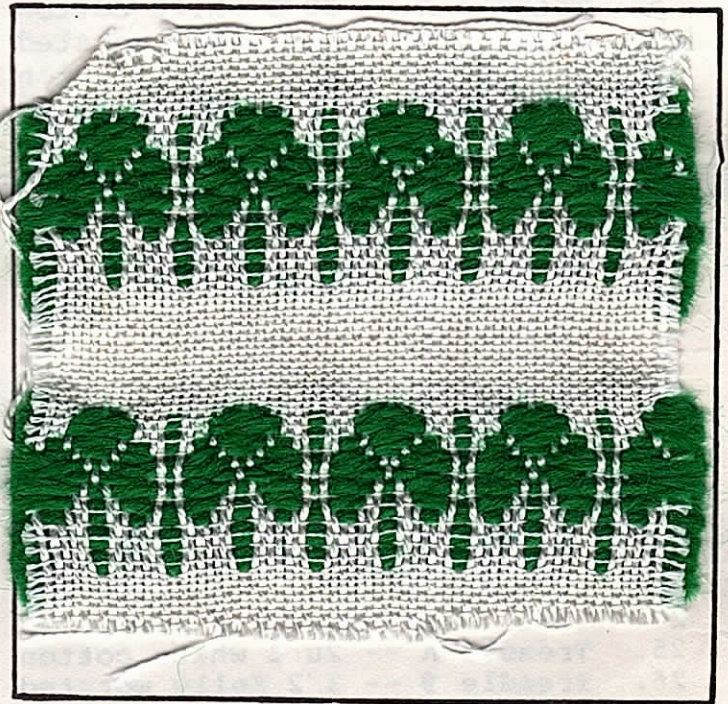
### TIE-UP DRAFT:

8				X				X			X		
7	X	X	X	X	X	X	X	X	X	X	X	X	X
6	X	X		X			X	X	X				X
5	X						X	X		X			
4	X						X	X					X
3	X	X					X	X		X			
2	X	X	X			X							X
1	X	X	X	X	X								X
	1	2	3	4	5	6	7	8	9	10	11	12	
							A	B					

### WARP:

Our warp was a 7/2 mercerized white perle cotton from England.

**WEFT:** There are two threads used in the weft. The tabby thread is a 20/2 bleached white egyptian cotton, and the pattern thread is a 3/2 worsted yarn, color Kelly Green, which we purchased from England, and which was spun in Sweden.



### REED USED:

We used a 10 dent reed, and we double-sleyed it, 2 ends per dent or 20 threads per inch.

### TREADLING:

Our pattern has 28 shots, 14 of pattern, and 14 of tabby. Then, in between each pattern, we had 18 shots of tabby or plain weave on treadles 11 and 12 or A & B, as we have marked on the tie-up draft above. We will write out the 28 shots of pattern, and then just say weave 18 threads of tabby on A & B for the plain weave area in between patterns.



### DRAFTS AND DESIGNS:

Published monthly (except July and August) by Robin & Russ Handweavers, 533 No. Adams St., McMinnville, Ore., 97128.

SUBSCRIPTIONS: \$10.00 per year, and Canada is \$11.00 per year, and foreign are \$12.00 per year. Back issues or single copies are \$1.25 each, plus 22¢ postage. Yearly subscriptions start with the September issue. If you subscribe after September, back issues from September on will be mailed to you.

VOLUME 28, Number 4, December, 1985

1. Treadle A -- 20/2 white cotton
2. Treadle 1 -- 3/2 Kelly worsted
3. Treadle B -- 20/2 white cotton
4. Treadle 1 -- 3/2 Kelly worsted
5. Treadle A -- 20/2 white cotton
6. Treadle 1 -- 3/2 Kelly worsted
7. Treadle B -- 20/2 white cotton
8. Treadle 1 -- 3/2 Kelly worsted
9. Treadle A -- 20/2 white cotton
10. Treadle 2 -- 3/2 Kelly worsted
11. Treadle B -- 20/2 white cotton
12. Treadle 3 -- 3/2 Kelly worsted
13. Treadle A -- 20/2 white cotton
14. Treadle 4 -- 3/2 Kelly worsted
15. Treadle B -- 20/2 white cotton
16. Treadle 5 -- 3/2 Kelly worsted
17. Treadle A -- 20/2 white cotton
18. Treadle 6 -- 3/2 Kelly worsted
19. Treadle B -- 20/2 white cotton
20. Treadle 7 -- 3/2 Kelly Worsted
21. Treadle A -- 20/2 white cotton
22. Treadle 8 -- 3/2 Kelly worsted
23. Treadle B -- 20/2 white cotton
24. Treadle 9 -- 3/2 Kelly worsted
25. Treadle A -- 20/2 white cotton
26. Treadle 9 -- 3/2 Kelly worsted
27. Treadle B -- 20/2 white cotton
28. Treadle 10 -- 3/2 Kelly worsted

End of one pattern repeat. Now, you have 18 shots of tabby, on the treadles 11 and 12, or A and B as we also call them.

This will end one complete pattern repeat. Do repeat over and over as desired..

### MORE ABOUT THE THREADS USED:

Our 7/2 white mercerized perle cotton came on about 1 lb. cones, and we had about 50 lbs. from England. We are down to about 10 or 15 lbs. now. It has about 2900 yards per lb., and the price has been \$8.00 per lb. while it lasts.

The 3/2 worsted, we have in Kelly, Bright Red, Gold, Beige, Grey, Aqua, and Purple. It is \$8.00 per lb. while it lasts. It has about 850 to 900 yards per lb.

The 20/2 white egyptian cotton, I am sure that you are all familiar with. It has 4200 yards per 1.2 lb. tube, or 8400 yards per lb., and the price is \$14.00 per lb. There are about 50 colors available.

### COST OF WARP, WEFT, AND FABRIC:

Our warp was 8 yards long, 40" wide, and it took 2 lbs. 3 1/2 oz. of the 7/2 white perle cotton. At \$8.00 per lb., this comes to \$17.75 so the warp cost per yard came to \$2.22 per yard.

In the weft, we used 12 oz. of the 20/2 white egyptian cotton, so at \$14.00 per pound, our cost comes to \$10.50.

And for the pattern thread, the Kelly worsted, we used 2 lbs. 12 oz. in our total of 6 yards and 34" of finished fabric. At \$8.00 per lb., this comes to \$22.00, so the total weft cost of the 2 threads was \$32.50 was \$4.64 per yard.

WARP COST PER YARD----	\$ 2.22
WEFT COST PER YARD----	4.64
=====	

Fabric cost per yard	\$6.86
----------------------	--------

### MORE ABOUT THE SAMPLE:

One thing we must mention is that when treading A and then 1 and B and then 1, the tabby thread seems to want to come out. So, when you are doing this portion of the pattern, you have to go around about two of your selvage threads with the tabby before you throw the shuttle through. This took care of the possibility of the tabby thread coming out when you throw the next shot. You might have to do this with the pattern thread also. Try it, and see what happens. I do not know why this was happening, but it is related to the fact that we have 7 treadles tied to # 1.

Other than this, Janice said that it was quite easy to weave.







## DRAFTS AND DESIGNS:

Published monthly (except July & August) by Robin & Russ Handweavers, 533 No. Adams Street McMinnville, Ore. 97128.

SUBSCRIPTIONS: \$10.00 per year. Canadian is \$11.00 per year, and foreign subscriptions are \$12.00 per year. Back issues or single copies are \$1.25 each, plus 22¢ postage for each issue.

VOLUME 28, No. 6, FEBRUARY, 1986

It has 1890 yards per lb., and it comes in varying sized cones. We have it in a dark aqua-green, a seafoam green, a sea-foam blue, a cherry red, a rose beige, and also in a sky blue, a turquoise, peach, and grey. Can wind off 1/2 lb. tubes, as the cones come in all sizes from 1/2 a lb. to 4 lbs. of a color on one cone. No extra charge for this service. It is a very, good buy at \$8.00 per lb.

## TREADLING SEQUENCE:

Delightfully easy to weave, this sample wove very rapidly, and I think we had one yard woven every hour and a half at most. There are 36 shots in one complete pattern repeat. I will give you the short method of writing this, and then write out the full 36 thread treadling repeat for you.

Short method is:

1. Treadle 2,5,2,5,2,5,
2. Treadle 1,5,1,5,1,5,
3. Treadle 2,5,2,5,2,5.
4. Treadle 4,5,4,5,4,5.
5. Treadle 3,5,3,5,3,5.
6. Treadle 4,5,4,5,4,5.

And the long method is to write it all out for convenience's.

1. Treadle # 2, one time
2. Treadle # 5, one time
3. Treadle # 2, one time
4. Treadle # 5, one time
5. Treadle # 2, one time
6. Treadle # 5, one time
7. Treadle # 1, one time
8. Treadle # 5, one time
9. Treadle # 1, one time
10. Treadle # 5, one time
11. Treadle # 1, one time
12. Treadle # 5, one time

13. Treadle # 2, one time
14. Treadle # 5, one time
15. Treadle # 2, one time
16. Treadle # 5, one time
17. Treadle # 2, one time
18. Treadle # 5, one time
19. Treadle # 4, one time
20. Treadle # 5, one time
21. Treadle # 4, one time
22. Treadle # 5, one time
23. Treadle # 4, one time
24. Treadle # 5, one time
25. Treadle # 3, one time
26. Treadle # 5, one time
27. Treadle # 3, one time
28. Treadle # 5, one time
29. Treadle # 3, one time
30. Treadle # 5, one time
31. Treadle # 4, one time
32. Treadle # 5, one time
33. Treadle # 4, one time
34. Treadle # 5, one time
35. Treadle # 4, one time
36. Treadle # 5, one time

END OF ONE COMPLETE PATTERN REPEAT.  
Do REPEAT OVER AND OVER AS YOU DESIRE.

## COST OF THE FABRIC:

In our warp, we used 3 lbs. 3 oz. of Medium Blue 4 $\frac{1}{2}$ /2 Perle Cotton.

The weft was the same thing only in a different color. We used a light purple thread for the weft in the same size yarn.

Our warp cost was \$25.50 for the 9 yard warp, 40" wide.

In the weft, we used 3 lbs. 6 oz. of the light purple color. It costs \$8.00 per lb. also, the same as the warp. Our total weft cost was \$27.00, and we had 8 yards of finished fabric from the 9 yard warp. Weft cost \$3.35 per yard.

WARP COST PER YARD - \$2.55

WEFT COST PER YARD - 3.35

\*\*\*\*\*

FABRIC COST PER YARD \$5.90

## MORE ABOUT THIS FABRIC:

This type of weave is usually found in finer weight threads, and thus the heavier threads as in this sample are normally not commonly seen.

You can find this type of weave in many of the early American linens in finer weights like 40/2 linen and finer.







### DRAFTS AND DESIGNS:

Published monthly (except July & August) by Robin & Russ Handweavers, 533 No. Adams St., McMinnville, Ore. 97128.

SUBSCRIPTIONS: \$10.00 per year. Canadian is \$11.00 per year, and foreign subscriptions are \$14.00 per year. Back issues or single copies are \$1.25 each, plus 22¢ pp. Yearly subscriptions all start with the September issue. If you subscribe after Sept., back issues from September on, will be sent to you.

VOLUME 28, Number 8, April, 1986

### TIE-UP DRAFT:

8		0		0		0	0	
7	0	0	0		0			
6				0		0	0	
5	0		0		0			
4		0				0	0	0
3	0			0		0		
2		0	0			0		0
1	0		0	0				
	1	2	3	4	5	6	7	

### MORE ABOUT THE FABRIC:

A very pleasing, and easy to weave fabric, with very few problems in the weaving.

One of the most important things about this fabric, is to have a regular, even, uniform beat. We noticed that if we beat too tight, the weft threads tended to slip together in the sort of closed rose beige lace block. It is important to use this even, uniform beat. Actually, we had 2 beats on this one. We threw the shuttle, beat with the shed open, changed to the next shed, and beat again.. All, uniform, even beats.

On this fabric, we used 8 threads of 18/3 nylon stitching twine as the selvage, and we threaded the selvage, 5,6, 7,8,1,2,3,4 on both edges. We had no problems, and not even one broken thread in the 9 yards of woven fabric.

### MORE ABOUT THE THREADS USED:

This spun rayon we have used in the warp has a nice sheen and gloss, and it is called a Perle rayon. We have it in size perle 5 which is the same as 6-1/2/3 ply, or we have it in size perle 3, which is 6-1/2/5 ply.

It is \$12.00 per lb., and has the same yardage per lb. as does the perle 3 and perle 5 cotton.

The 16/2 ramie, we have available in 30 colors. We had this spun to order, and dyed for us in Switzerland. It has been a stock item for about 30 years. It has 2400 yards per lb., and is available on larger cones varying from 1-1/2 to 4 lbs. each, It is \$4.50 per 600 yard spool of 4 oz. or \$18.00 per pound. We just had to raise the price, as our last lot of this was raised in price exactly \$2.00 per lb.

### COST OF THE FABRIC:

In our warp, it took altogether, 3.6 lbs. of the natural and bleached white 6-1/2/3 ply rayon. At a cost of \$12.00 per lb./ our total warp cost came to \$43.20, and thus, the cost per yard of the warp, comes to \$4.80 per yard.

In the weft, we had slightly over 8 yards of finished fabric, so the weft cost per yard comes to \$42.90 for the entire warp, or the cost per yard comes to \$4.80 per yard.

In the weft, we had slightly over 8 yards of finished fabric, from our 9 yard warp. The weft is the 16/2 Ramie at \$18.00 per lb. We used 2 lbs. 7 oz. in weaving the 8 yards of finished fabric. The total weft cost was \$42.90 for the entire 8 yards, and so the cost per yard comes to \$5.36 per yard.

WARP COST PER YARD	---	\$4.80
WEFT COST PER YARD	---	\$5.36
<u>FABRIC COST PER YARDS</u>		<u>\$10.16</u>

### TREADLING SEQUENCE:

There are two blocks of treadling, just as there are 2 blocks to the threading draft. I will give you the treadling for the 1st and then the 2nd block.

#### 1st Block

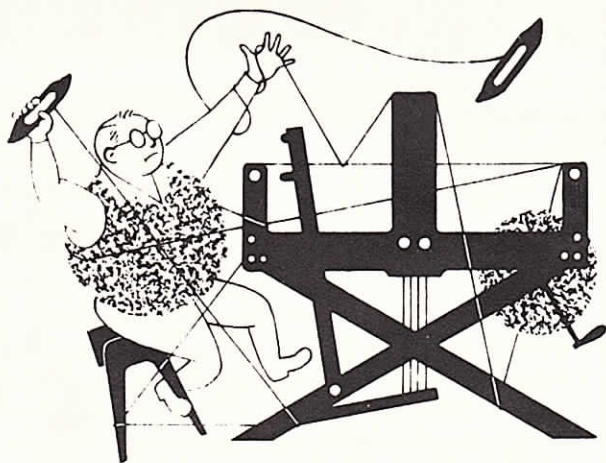
Treadle 4, 2, 1, 2, -- 7 times  
Treadle 4, only, to balance

#### 2nd Block

Treadle 5,6,5,4,3,4, - 4 times  
Treadle 5,6,5, to balance

This means that there are 56 shots in one complete pattern repeat, 29 shots in the 1st block and 27 shots in the 2nd block. Of course, you could vary this any way you might like, and you will still have nice results.





# drafts and designs

## *a guide for 5 to 12 harness weaves*

VOLUME 28, No. 10. June, 1986.

### PUFF AND FLUFF

This pattern is classified in the Tidball Monograph, THE HANDLOOM WEAVES, as an INTERRUPTED LINEAR ZIGZAG. I like it because it is light and fanciful, and would be an exciting pattern for an item like a poncho, a pull over, light weight jacket, or other similiar uses. It is a most interesting 6 harness weave.

### WARP THREADS USED:

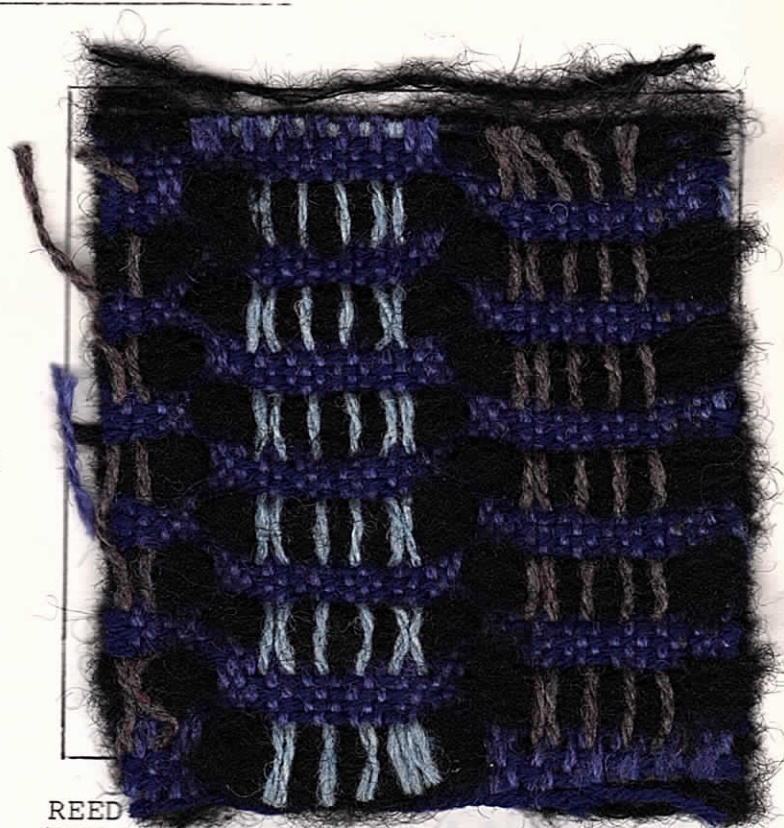
In our warp, we have used three different threads. Our main warp thread is a purple, 2 ply, worsted yarn from England. It does not have a size on it, but it is about the equivelant of a 2/8's or 2/10's worsted.

The light blue is a woolen spun yarn, as is the brown-grey blend yarn. They are both \$6.80 per lb. and we have 4 colors of them on hand. All three of these have about 2200 yards per lb..

### WEFT THREADS USED:

We used 2 other threads from England in the weft. The background thread is the same size 2 ply as the warp, only in a purple color.

The pattern thread used in the weft is the black dji-dji, brushed wool from Phoenix of Ireland. We still have about 25 lbs. of this black on sale at \$16.00 per lb. When this is gone, we will go back to our regular stock of this direct from the suppliers, and it is \$28.00 per lb. It has approximately 1,000 yards per pound. Dark purple was the main weft.



### REED

On this one, we used a 4 dent reed, and we had it sleyed 4 ends per dent, or 16 threads per inch. It gave more room for the warp threads to separate by using the 4 dent, as we did find that the light purple used in the warp was hairy and did tend to cling together. We had to use an extra beat to separate it.



### DRAFTS AND DESIGNS:

Published monthly (except July & August) by Robin & Russ Handweavers, 533 N. Adams St., McMinnville, Ore., 97128.

**SUBSCRIPTIONS:** \$10.00 per year. Canadian is \$11.00 per year, and foreign subscriptions are \$12.00 per year. Back issues or single copies are \$1.25 each, plus 22 ¢ postage.

VOLUME 28, No. 10. June, 1986

### THREADING DRAFT:

6		L	L	L	L	L	L	
5	X	X	X	X	X	X	X	X
4	X	X	X	X	X	X	X	X
3					X	X	X	X
2					X	X	X	X
1					B	B	B	B

### KEY TO COLORS IN THE WARP:

- X--purple, 2 ply worsted
- L--light blue, english 2 ply worsted.
- B--brown, tan, blue, 2 ply worsted

### TREADLING SEQUENCE:

I revised the tie-up on this, so we would have a much easier treadling. There are 16 shots in each pattern repeat, and we will give you the complete 16 shot treadling sequence.

1. Treadle # 1 -- dark purple
2. Treadle # 2 -- dark purple
3. Treadle # 1 -- dark purple
4. Treadle # 2 -- dark purple
5. Treadle # 3 -- black brushed wool
6. Treadle # 3 -- black brushed wool
7. Treadle # 3 -- black brushed wool
8. Treadle # 3 -- black brushed wool
9. Treadle # 6 -- dark purple
10. Treadle # 5 -- dark purple
11. Treadle # 6 -- dark purple
12. Treadle # 5 -- dark purple
13. Treadle # 4 -- black brushed wool
14. Treadle # 4 -- black brushed wool
15. Treadle # 4 -- black brushed wool
16. Treadle # 4 -- black brushed wool

PLEASE BE SURE TO READ MORE DETAILS ABOUT THE TREADLING, in the section, MORE ABOUT THE FABRIC:

End of one complete pattern repeat. Do repeat over and over.

### MORE ABOUT THE FABRIC:

We had a 42" wide warp, plus 6 selvage threads on each edge. This is important, as the selvage threads play an

important part in the weaving of this fabric.

Note in the treadling, that we have 4 shots, all on one treadle, with no tabby, and 4 shots on another treadle, with no tabby.

We throw the shuttle in the shed you have when you step on treadle # 3. With the shed open, go around 2 of the nylon selvage threads on the top of the shed. Bring shuttle in the shed, and throw for the 2nd time. Repeat this for the 3rd and the 4th time, until you have 4 shots on the # 3 treadle.

### TIE-UP DRAFT:

6		O	O	O	O		
5		O		O		O	
4	O			O	O		
3		O	O			O	
2	O		O		O		
1	O		O	O		O	
		1	2	3	4	5	6

There is another way of doing this. Using a longer stick or ski shuttle, wind 4 ends of black brushed wool on the shuttle to act as one thread. And then proceed to weave with this. If you do this, then you only need one shot on treadle # 3 and treadle # 4 as indicated in the treadling sequence.

Also, please note in the weaving that the light purple warp threads do tend to stick together. To help with this, I use a firm, even, double beat. I beat with the shed open, change to the next shed, and beat again, before you throw the shuttle for the 2nd time. This seems to snap the cling threads apart, so you can throw the shuttle, and not go over or under any clinging warp threads.,

Really, it sounds as though this was a complicated weave, but it is not, and it is very simple, and easy to weave.

### COST OF THE THREADS USED:

The purple in the warp is \$8.00 per pound, and you can order as little as 1/2 lb. The light blue and the brown-grey also, are \$6.80 per lb., and you can order 1/2 lb. minimum.

The black brushed wool came on cones of about 1 to 2 lbs., and it is \$16.00 per lb. while this lot lasts. After this current lot is sold, then the black will be the regular \$28.00 per lb. price. The darker purple in the weft is also from England, and it too, is \$8.00 per pound. It comes on about 1 lb. cones.