

drafts and designs



a guide for 5 to 12 harness weaves

VOLUME 29, Number 2, October, 1986.

LAVENDER SHADOWS:

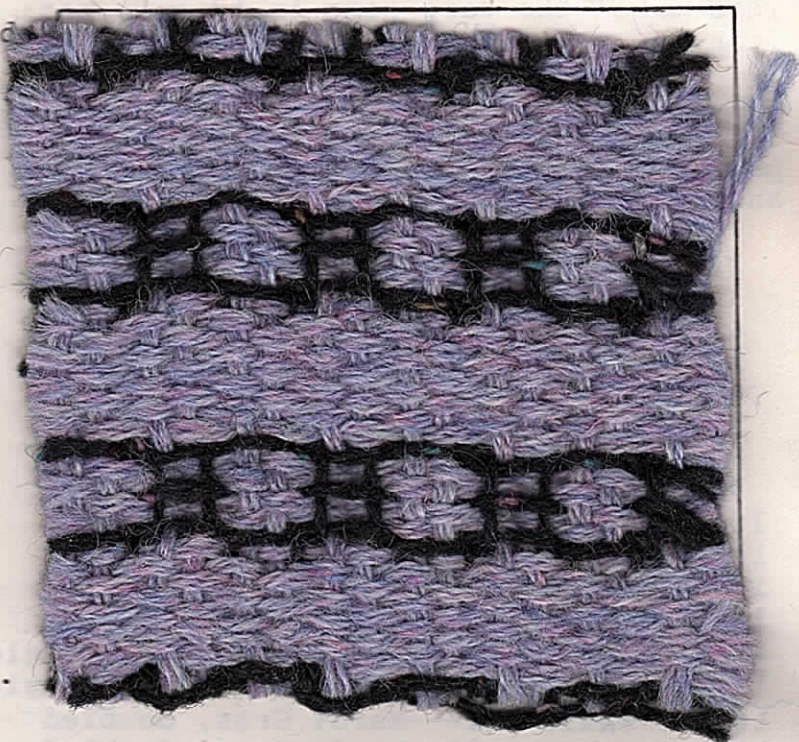
This 8 harness double weave was planned for a lap robe or car cover, and after it is washed, it should come closer together, and be quite satisfactory for this use.

WARP:

We have two threads in the warp. One is a 2 ply wool tweed called NEW COAL, and the other is a 2/8's SHETLAND wool, in a color called Mardi Gras. It is from Knoll manufacturing company in Scotland.

WEFT:

We have the same two threads used in the weft, as is used in the warp. And in the weft, we used the new coal wool tweed singly, and we doubled the 2/8's shetland, 2 ends together on one bobbin.



THREADING DRAFT:

8		O	O					O	O						
7			X						X						
6				X						X					
5					O	O				O	O				
4						O	O				O	O			
3							X					X			
2								X					X		
1									O	O				O	O

TIE-UP DRAFT:

8				O	O									O
7				O	O	O	O	O						
6			O	O	O									
5		O	O	O	O									
4					O	O			O	O				O
3					O	O				O	O			
2			O		O	O	O							
1	O		O	O			O							

KEY TO THREADS IN THE WARP:

- O - 2/8's Shetland Wool, Mardi Gras
- X - Black, 2 ply, wool tweed, called New COAL

1 2 3 4 5 6 7 8 9 10

DRAFTS AND DESIGNS:

Published monthly (except July and August) by Robin & Russ Handweavers, 533 North Adams St., McMinnville, Ore. 97128

SUBSCRIPTIONS: \$10.00 per year. The Canadian Subscriptions are \$12.00 per year, and foreign, \$13.00 per year. Back issues or single copies are \$1.25 each, plus 22¢ per copy postage. All subscriptions start with the September issue. If you subscribe after September, back issues from September on will be sent to you.

VOLUME 29, No. 2, October, 1986:

REED USED:

We used an 8 dent reed with a special sleying of the reed. We had 2 ends per dent with the 2/8's Shetland Mardi Gras, and we had one end per dent with the 2 ply wool tweed called NEW COAL. This makes the warp come to 12 ends per inch.

TREADLING SEQUENCE:

There are 27 shots in each complete pattern repeat. Here is the treadling and thread sequence.

1. Treadle # 3---Mardi Gras, doubled
2. Treadle # 4---New Coal, single
3. Treadle # 5---New Coal, single
4. Treadle # 6---Mardi Gras, doubled
5. Treadle # 7---Mardi Gras, doubled
6. Treadle # 8---New Coal, single
7. Treadle # 6---Mardi Gras, doubled
8. Treadle # 7---Mardi Gras, doubled
9. Treadle # 5---New Coal, single
10. Treadle # 4---New Coal, single
11. Treadle # 3---Mardi Gras, doubled
12. Treadle # 1---Mardi Gras, doubled
13. Treadle # 10---Mardi Gras, doubled
14. Treadle # 1, 10, & 2 New Coal single
15. Treadle # 1, 9, & 10 New Coal single
16. Treadle # 1---Mardi Gras, doubled
17. Treadle # 10---Mardi Gras, doubled
18. Treadle # 1, 2, & 10, New Coal single
19. Treadle # 1, 9, & 10, New Coal single
20. Treadle # 1---Mardi Gras, doubled
21. Treadle # 10---Mardi Gras, doubled
22. Treadle # 1, 2, & 10, New Coal, single
23. Treadle # 1, 9, & 10, New Coal, single
24. Treadle # 1---Mardi Gras, doubled
25. Treadle # 10---Mardi Gras, doubled
26. Treadle # 1, 2, & 10, New Coal, single
27. Treadle # 1, 9, & 10, New Coal, single

END OF ONE COMPLETE PATTERN REPEAT. Do repeat over and over as desired.

COST OF THE THREADS USED & MORE ABOUT THEM.

The 2/8's Shetland Wool from Knoll Manufacturing Co. in Scotland, has 2250 yards per lb., comes on about 2 lb. cones, and is \$6.80 per lb. while it lasts.

The New Coal, Black, 2 ply wool tweed yarn, came on about 2 lb. cones. We have a lighter blue, and a grey in this yarn also. It has 1300 yds. per lb..

COST OF THE FABRIC:

We had an 8 yard warp, 40" wide, and it took 1 lb. 4 oz. of Shetland and 15 oz. of the New Coal, 2 ply tweed. The total warp cost was \$16.00, or the cost per yard was \$2.00 per yard, for 40" width.

In the weft, we used 2 lbs. 11 oz. of Shetland at \$6.80 per lb., and 13 oz. of the New Coal tweed at \$8.00 per lb. Our total weft cost came to \$24.78, and we had 6-1/2 yards of finished fabric. Our weft cost per yard was \$3.82.

```

=====
WARP COST PER YARD, 40" wide $2.00
WEFT COST PER YARD----- 3.82
=====
FABRIC COST PER YARD----- $5.82
=====

```

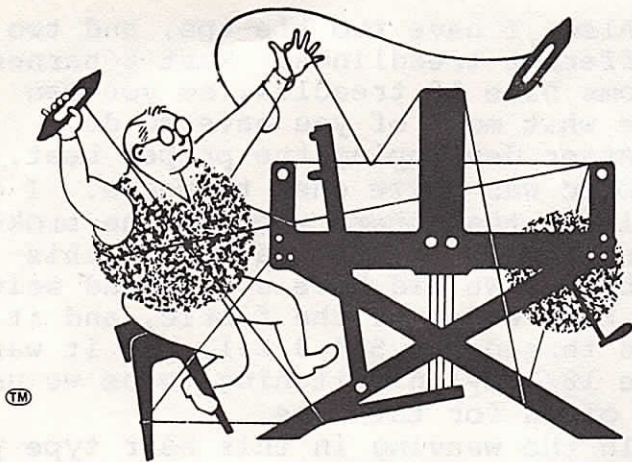
MORE ABOUT THIS FABRIC:

We had 8 threads selvage on this sample, but even with the nylon 18/3 stitching twine as a selvage, it was weaving narrower than it should have. As a result, there were broken threads. As a result, we used a temple or stretcher in the weaving, setting it at 40" width. Our finished fabric was then 39" to 40" wide, instead of 36". This is why we do sometimes use a stretcher. I think that a closer set of the warp would have helped on this fabric. Our 8 dent reed was just a little open and it would have been a much more satisfactory fabric in a 10 dent reed.

I might mention that the Shetland wool was doubled on the bobbin. Two ends were wound together to weave as one thread.

Otherwise, we had absolutely no problems in the weaving.

drafts and designs



a guide for 5 to 12 harness weaves

VOLUME 29, No. 4., DECEMBER, 1986

STARLIGHT, STARBRIGHT, OUR STARS ARE BROWN AND GOLD TONIGHT.

This month, our pattern is a six harness pattern, which is quite effective for use in lap robes, in afghans, and many other similar uses.

WARP:

Our warp is 2 colors of brushed wool and mohair yarn. It is 95% wool, and 5% mohair blend. The two colors are:

X---Firefly Gold # 6133
O---Yule Log Brown # 6682

WEFT:

Our weft is the same two colors in brushed wool, as we used in the warp. It is mainly Firefly Gold, and also Yule Log BROWN:

REED USED:

A 6 dent reed was used, and it was SINGLE SLEYED ONE END PER DENT OR 6 ends per inch.

BEAT:

The most important thing about this fabric is the beat. You practically just lay the weft thread in, with almost no beat whatsoever. If you beat it too hard (as I did the first 3 repeats), then you cannot even see the pattern. It is the even-ness of beat that you must try to develop for this one. As this is quite a hairy yarn, after it is woven, it will gradually mix in with the fibers next to it and twist together and thus hold in place. Also, when finished with the weaving, a very light brushing would help to stabilize the warp and weft.



TIE-UP DRAFT FOR 10 TREADLES:

6	0	0				0	0	0		
5	0	0	0			0	0			
4		0	0	0		0		0		
3			0	0	0	0			0	
2				0	0	0		0	0	
1					0	0	0	0	0	
	1	2	3	4	5	6	7	8	9	10

TIEUP DRAFT FOR 12 TREADLES:

6	0	0				0	0	0	0			
5	0	0	0			0	0	0				
4		0	0	0		0	0			0		
3			0	0	0	0			0	0		
2				0	0	0		0	0	0		
1					0	0		0	0	0	0	
	1	2	3	4	5	6	7	8	9	10	11	12

DRAFTS AND DESIGNS:

Published monthly (except July and August) by Robin & Russ Handweavers, 533 No. Adams St., McMinnville, Ore. 97128.

SUBSCRIPTIONS: \$10.00 per year. The Canadian subscriptions are \$12.00 per year, and foreign are \$13.00 a year. Back issues or single copies are \$1.25 each, plus 22¢ per copy postage. All subscriptions start with the September issue. If you subscribe after September, back issues from September on will be sent to you.

VOLUME 29, No. 4, DECEMBER, 1986

THREADING DRAFT:

6	X		O
5		X	
4			X
3		X	
2			X
1		X	

KEY TO COLOR IN THE WARP:

- X - FIREFLY GOLD # 6133
- O - YULE LOG BROWN # 6682

NOTE ABOUT TREADLING ON THE TIE-UP WITH 12 TREADLES:

On the tie-up with 12 treadles, you can do a walking treadling, which is much faster and easier than on the 10 treadle tie-up. You treadle 1,2,3,4, 5,6, with dark brown, and then you treadle 7,8,9,10,11,12 with the gold.

NOTE ABOUT TREADLING ON THE TIE-UP WITH 10 TREADLES:

Of course, the treadling is different with just 10 treadles, and you have a different treadling sequence. You have to skip back and forth on this treadling though. Here is the treadling sequence with 10 treadles.

Treadle 1,2,3,4,5,6 with gold brushed wool & mohair, and then you treadle 7, 2,8,9,5,10 with the dark brown wool and mohair blend.

MORE ABOUT THE FABRIC:

We were planning a lap robe or an afghan, and this was what we came up with. Once again, let me emphasize that the treadling sequence and the beat are most important. Just push the weft in place, and do not beat it in place.

Also, I have two tie-ups, and two different treadlings. Most 8 harness looms have 10 treadles, so you can see what most of you have to do.

After developing the proper beat, this fabric was quite easy to weave. I do believe that there was not one broken warp thread in the weaving of this fabric. We did have a 6 thread selvage on both sides of the fabric, and it was threaded 6,5,4,3,2,1, and it was the 18/3 nylon stitching twine we use so often for this use.

In the weaving in this hair type yarn, we quite often have little hair balls form on the reed. We noticed that the brown did this a little more than the gold color. These did not give any problems in the weaving, and when we finished, we just cleaned up the reed.

COST OF THE FABRIC:

We have a special on these 2 colors only of \$8.00 per bag of 1 lb. 1 oz. each. We have about 12 other colors at the price of \$12.00 per bag of 1 lb. 1 oz.

We did a 9 yard warp, 40" wide plus selvage. It took 1 lb. 3½ oz. of each color to do this 9 yard warp. Our total warp cost came to \$18.93, or the cost per yard was \$2.11 per yard.

In the weft, we used 1 lb. 6 oz. of each of the two colors in 8-1/2 yards of finished fabric. Our total weft cost was \$20.68, or the cost per yard for the weft was \$2.43 per yard.

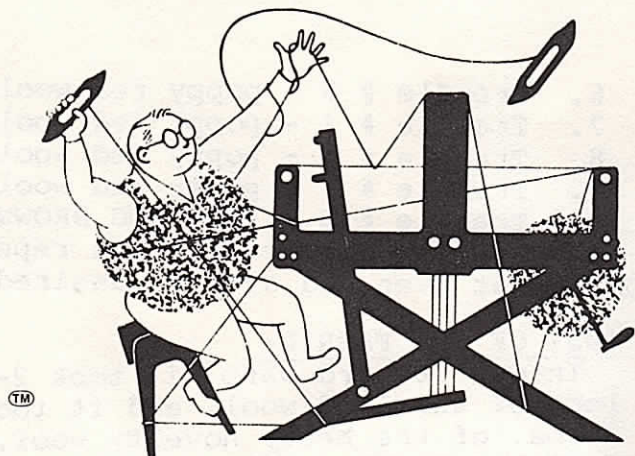
WARP COST PER YARD-----40"--- \$2.11
 WEFT COST PER YARD-----38½"- 2.43
 =====
 FABRIC COST PER YARD----- \$4.54

Just a note about the brushed wool used in this sample.

We have the two colors, used in the warp and weft, on this project, on sale at \$8.00 per package of 1 lb. 1 oz. per pkg. That is 10 balls in all. Most of the remaining colors are \$12.00 per package, each package is 10 balls of 50 grams each. We have in stock, the following listed colors.

- 1. Slate # 5617
- 2. Grey # 704
- 3. Wine # 618
- 4. Honey # 2612
- 5. Red # 1556
- 6. Navy # 4707
- 7. Beige # 3117
- 8. Wild poppy # 2620
- 9. Ceil Blue Grey # 3515

drafts and designs



a guide for 5 to 12 harness weaves

VOLUME 29, No. 5. January, 1987

ROSE-RED BRICKS:

This interesting 6 harness weave is very satisfactory for the use this was intended, a lap robe or a couch throw.

WARP:

There are two threads used in the warp. One is the 2/3 run, pure SHETLAND WOOL, called "SPICE HEATHER." It has 2400 yards per lb.

The 2nd thread is an English wool novelty yarn, which is 60% wool, and has a 40% acrylic binder. It has about 560 yards per lb.

WEFT:

There are two threads used in the weft. One is the 95% brushed wool, and 5% mohair yarn, which we have on special at a close-out price, and it is color # 2620, Wild Poppy.

The 2nd thread was the same brown, English Novelty wool, and the color is called "PEAT BOG BROWN."

REED USED:

We used a 4 dent reed, and had a special slewing of the reed. It was 4 ends of the 2/3 run Shetland wool, and then 1 end of Peat Bog Brown in the 2nd dent. This was repeated over and over.

THREADING DRAFT:

6					0
5				0	
4		X		X	
3	X		X		
2				X	X
1			X		X



Key to colors in the warp:

- X - 2/3 run Shetland, Spice Heather
- O - Peat Bog Brown, Novelty Wool.

LENGTH AND WIDTH OF THE WARP:

Our warp was 40" wide, and 10 yards long. From this, we received 8-3/4 yards of fabric, and it had woven down to 38" wide when off the loom..

TIE-UP DRAFT:

6			0	0	0	0
5	0	0			0	
4		0		0		
3	0		0			
2		0		0		
1	0		0			
	1	2	3	4	5	6

DRAFTS AND DESIGNS:

Published monthly (except July and August) by Robin and Russ Handweavers, 533 No. Adams St., McMinnville, Ore., 97128.

SUBSCRIPTIONS: \$10.00 per year. The Canadian subscriptions are \$12.00 per year, and foreign, \$13.00 per year. Back issues or single copies are \$1.25 each, plus 22¢ per copy postage. All subscriptions start with the September issue. If you subscribe after Sept., back issues from September on will be sent to you.

VOLUME 29, No. 5. January, 1987

COST OF THE THREADS USED:

The spice heather shetland wool yarn has 2400 yards per lb. It is \$6.00 per pound while it lasts.

The Peat Bog Brown, wool boucle, has 560 yards per lb. It came on about one lb. cones, is \$12.00 per lb., and we have it in about 8 different colors.

The red-poppy, brushed wool and mohair yarn has approximately 1 lb. 1 oz. per package, and is on sale at \$12.00 per pkg. The regular price of this yarn at most warehouses is about \$48.50 per bag of 10 balls, or 1 lb. 1 oz. in weight. It has about 1,000 yards per pound.

MORE ABOUT THE FABRIC:

This one was quite easy to weave, and we had no broken threads in the 10 yard warp.

We were surprized that we did not have any trouble weaving with the brushed wool. Normally, we cannot wind a full bobbin, as the hairs come off the end, and wrap around the pirn. We were careful in winding our bobbins, and did not fill them full on each end, and so the weaving went on very well.

We did use an 6 thread selvage on each edge of the 18/3 nylon stitching twine, and as a result, there were no broken edge threads.

TREADLING SEQUENCE:

There are 10 shots in each complete repeat of the pattern, so I will give you the treadling herewith.

1. Treadle # 1 - poppy red wool
2. Treadle # 2 - poppy red wool
3. Treadle # 1 - poppy red wool
4. Treadle # 2 - poppy red wool
5. Treadle # 6 - PEAT BOG BROWN

6. Treadle # 3 - poppy red wool
 7. Treadle # 4 - poppy red wool
 8. Treadle # 3 - poppy red wool
 9. Treadle # 4 - poppy red wool
 10. Treadle # 5 - PEAT BOG BROWN
- End of one complete pattern repeat.
Do repeat over and over as desired.

COST OF THE FABRIC:

In our 10 yard warp, it took 2-1/2 lbs. of shetland wool, and it took 3 lbs. of the heavy novelty wool, PEAT BOG BROWN, with the polyester binder. The shetland wool, color called SPICE HEATHER, is \$6.00 per lb. The Heavy brown, novelty wool is \$12.00 per lb. Our total cost for the 2 items in the warp was \$15.00 for the shetland and \$18.00 for the novelty wool, for a total warp cost of \$33.00.

This makes our cost per yard for the warp come to \$3.30 per yard.

In the weft, we used 25 skeins of the brushed wool and mohair yarn in the wild poppy color. As this was \$12.00 per package of 1 lb. 1 oz.), our total weft cost was \$30.00 as we used 2 1/2 packages of this yarn in the weft.

The other thread in the weft was the Peat Bog Brown novelty wool with polyester binder, and we used 2 lbs. 15 oz. of it, so the weft cost for this one thread was the most expensive, coming to \$35.25. Our total weft cost was \$65.25 for 8-3/4 yards of the finished fabric, so the weft cost per yard comes to \$7.46 per yard.

WARP COST PER YARD, 40" wide \$3.30
 WEFT COST PER YARD, 38" wide 7.46
 =====
 FABRIC COST PER YARD ----- \$10.76

1/2 PRICE
 DRAFTS & DESIGNS
BACK ISSUE SALE

We have available, about 15 years of back issues, and these are on sale until January 31, at the 1/2 price of \$5.00 per year, plus the shipping. A good chance to add to your collection and obtain valuable samples of actual woven fabrics.

DRAFTS AND DESIGNS:

Published monthly (except July and August) by Robin & Russ Handweavers, 533 North Adams St., McMinnville, Ore. 97128

SUBSCRIPTIONS: \$10.00 per year. The Canadian Subscriptions are \$12.00 per year, and foreign, \$13.00 per year. Back issues or single copies are \$1.25 each, plus 22¢ per copy for postage. All subscriptions start with the September issue. If you subscribe after September, back issues from September on will be sent to you.

VOLUME 29, No. 6, February, 1987:

TREADLING SEQUENCE:

There are 20 shots in each complete pattern repeat.

- 1 Treadle # 1 - one time Heliotrope
- 2 Treadle # 2 - one time Heliotrope
- 3 Treadle # 3 - one time Heliotrope
- 4 Treadle # 4 - one time Heliotrope
- 5 Treadle # 1- one time Heliotrope
6. Treadle # 2- one time Heliotrope
7. Treadle # 3- one time Heliotrope
8. Treadle # 4- one time Heliotrope
9. Treadle # 1- one time Heliotrope
10. Treadle # 2- one time Heliotrope
11. Treadle # 3- one time Heliotrope
12. Treadle # 4- one time Heliotrope
13. Treadle # 1- one time Heliotrope
14. Treadle # 2- one time Heliotrope
15. Treadle # 3- one time Heliotrope
16. Treadle # 4- one time Heliotrope
17. Treadle # 5- one time Imperial Purple
18. Treadle # 6- one time Imperial Purple
19. Treadle # 7- one time Imperial Purple
20. Treadle # 8- one time Imperial Purple

END OF ONE PATTERN REPEAT. Repeat over and over as desired.

COST OF THE FABRIC:

It took 4 lbs. exactly of the Ramie for our 10 yard warp, 42" wide. At \$18.00 per lb., our total warp cost was \$72.00 or the cost per yard was \$7.20 per yard.

In the weft, it was much less costly. It took 1-1/4 tubes per yard of the 30/3 SPUN SILK. At \$2.50 per tube of about one ounce, this came to \$3.12 per yard for the weft thread.

WARP COST PER YARD, 42" wide \$7.20

WEFT COST PER YARD 40" wide \$3.12

=====

Fabric cost per yard, 9 yds----\$10.33

MORE ABOUT THE THREADS USED:

Our 16/2 Ramie is spun and dyed to order for us in Switzerland. We do normally have 26 colors in stock, but we are out of two of them, so we have only 24 colors on hand. It is the same size as a 16/2 linen, and it has 2400 yards per lb. We ask the manufacturers to use the best dyes available when dyeing the ramie for us. We do have the 24 colors and are out of Rose Beige, and Foggy, Foggy Dew. It comes to us on about 1½ to 2½ lb. cones, and it is \$18.00 per lb. We wind off the colors on 600 yard tubes (4 oz.) and these sell for \$4.50 each. We have been stocking this Ramie yarn now for almost 35 years. We do keep adding new colors to it though, as now we have to order 1000 Kilo's in order to get it spun and dyed to order for us.

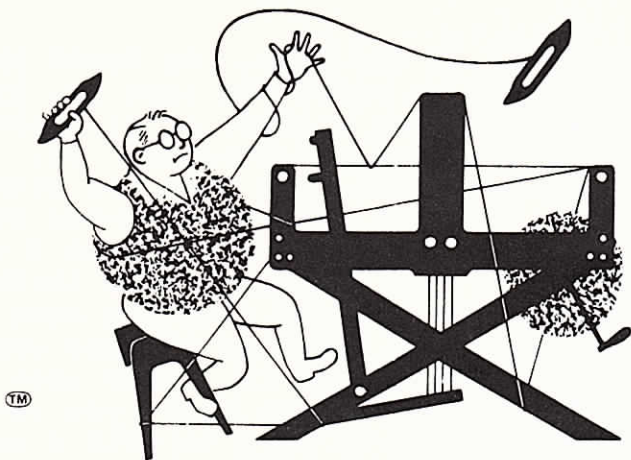
MORE ABOUT THE FABRIC:

I used a different loom that I have never woven on before to weave this fabric. Until I got used to it, I had all kinds of problems. After I got used to it, and particularly after I put a new piece on the shuttle-race, to raise the shed, then the weaving went quite swiftly. Before putting this new piece on the shuttle race and raising the shed, I had broken about 15 to 20 threads by hitting them with the shuttle. After making this change, then I had no problems after that.

I liked the combination of the Ramie and Silk. This particular lot of Ramie had much more sheen than usual, and with the spun silk sheen, the two together make it a very rich looking fabric.

I feel it is important to use a firm, even, double beat on this fabric also. Throw your shuttle through the shed, beat while you have the same shed, change to the next shed and beat firmly again. This seemed to work best after I had repaired the shuttle race. I had broken several selvage threads before I made this change, and after the change was made, I never had another broken selvage thread.

I find most Ramie has a slightly fuzzy appearance, but after it is washed once, this seems to disappear. Ramie is more flexible than linen, and easier to weave with. It bends around the corners easier than linen when used in the weft.



drafts and designs

a guide for 5 to 12 harness weaves

VOLUME 29, No. 7, March, 1987

AN OUTLINED CROSS

We were trying to make an ecclesiastical fabric with a cross in it, and this is what we came up with on seven harnesses.

WARP:

Our warp was the 30/3 spun silk from Switzerland, in a color called # 1085 HELIOTROPE.

WEFT:

We had two threads in the weft, one for a tabby thread, and one for a pattern thread.

The tabby was the same thread as the warp, a 30/3 spun silk in color # 1085 Heliotrope.

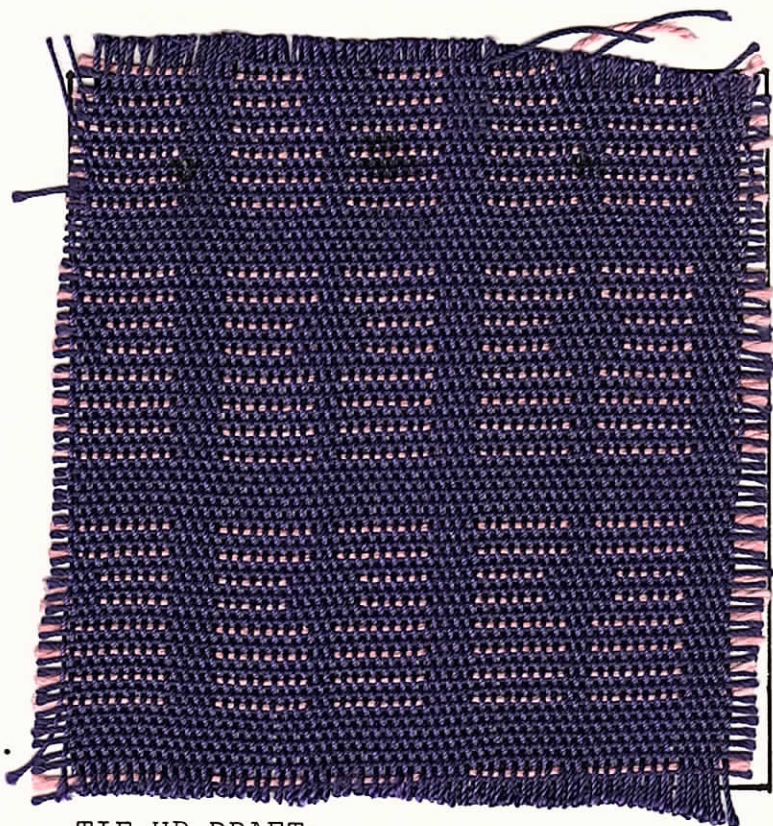
The second thread was a 2/14's W.C., SPUN SILK in a color called BLUSH PINK.

REED USED:

Our reed was a 16 dent reed, and it was double sleyed, 2 ends per dent, or 32 threads per inch.

THREADING DRAFT:

7	X	X			X	X						
6			X	X				X	X	X	X	
5					X	X				X	X	
4				X	X					X	X	
3					X	X						X
2	X	X	X	X	X	X	X	X	X	X	X	X
1	X	X	X	X	X	X	X	X	X	X	X	X



TIE-UP DRAFT:

With the tie-up that we used, we were able to tie-up just 4 treadles in the center of our 12 treadle loom. I will give the tie-up we used for this sample.

TIE-UP DRAFT:

7		0		0
6	0	0		0
5				0
4				0
3				0
2	0	0	0	
1	0	0	0	
	1	2	3	4

DRAFTS AND DESIGNS:

Published monthly (except July and August) by Robin & Russ Handweavers, 533 No. Adams St., McMinnville, Ore., 97128.

SUBSCRIPTIONS: \$10.00 per year. The Canadian subscriptions are \$12.00 per year, and foreign, \$13.00 per year. Back issues or single copies are \$1.25 each, plus 22¢ per copy postage. All subscriptions start with the September issue. If you subscribe after Sept., back issues from September on will be sent to you.

VOLUME 29, No. 7. March, 1987

TREADLING SEQUENCE:

There are 28 shots in each complete pattern repeat, so we will write out the 28 thread sequence.

1. Treadle # 1, 1 time, 2/14's Pink
2. Treadle # 4, 1 time, Heliotrope
3. Treadle # 3, 1 time, Heliotrope
4. Treadle # 1, 1 time, 2/14's Pink
5. Treadle # 4, 1 time, Heliotrope
6. Treadle # 3, 1 time, Heliotrope
7. Treadle # 1, 1 time, 2/14's Pink
8. Treadle # 4, 1 time, Heliotrope
9. Treadle # 3, 1 time, Heliotrope
10. Treadle # 1, 1 time, 2/14's Pink
11. Treadle # 4, 1 time, Heliotrope
12. Treadle # 3, 1 time, Heliotrope
13. Treadle # 2, 1 time, 2/14's Pink
14. Treadle # 4, 1 time, Heliotrope
15. Treadle # 3, 1 time, Heliotrope
16. Treadle # 2, 1 time, 2/14's Pink
17. Treadle # 4, 1 time, Heliotrope
18. Treadle # 3, 1 time, Heliotrope
19. Treadle # 1, 1 time, 2/14's Pink
20. Treadle # 4, 1 time, Heliotrope
21. Treadle # 3, 1 time, Heliotrope
22. Treadle # 1, 1 time, 2/14's Pink
23. Treadle # 4, 1 time, Heliotrope
24. Treadle # 3, 1 time, Heliotrope
25. Treadle # 4, 1 time, Heliotrope
26. Treadle # 3, 1 time, Heliotrope
27. Treadle # 4, 1 time, Heliotrope
28. Treadle # 3, 1 time, Heliotrope

END OF ONE COMPLETE PATTERN REPEAT. Do repeat over & over as desired.

MORE ABOUT THE WEAVING:

First of all, you want to be sure to use a firm, even, double beat, beating with the shed open, changing to the next shed, and beating again firmly. Secondly, there is an occasional knot

in the silk in the warp. We found that if you tried to weave the knot in, it would either come untied, or it would catch in the reed and stretch. So, when you have this, you have two alternatives. You can use the spee-dee cement and cut the knot out and glue the 2 ends together; or you can hang a new thread in in place of the one with the knot in it, and weave until it is long enough to put the old thread in. Then when you take the fabric off the loom, you can weave the 2 ends of warp in with a needle about 4 or 5 threads each way.

Most people call this type of weave a "Swivel"weave. In this case, the swivel part of the pattern is on both the surface and the back. One definition of the swivel weave in a textile dictionary, it says the SWIVEL DOT is a small dot effect made on cloth woven on the swivel principle in weaving. It further states that SWIVEL CLOTH has spots, sprigs, or small figures on a plain background. The figure is made with an extra set of filling threads, normally woven into the fabric by a varying number of small shuttles or swivels. Swivel weaving is normally used for lightweight cottons, rayons, and silks in the novelty dress-goods group.

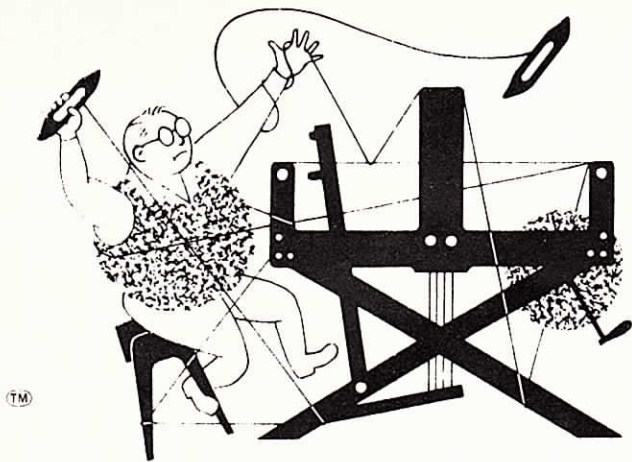
COST OF THE FABRIC:

As this is an all silk fabric, it is quite expensive. We used 46 tubes of the 30/3 spun silk in our 10 yard warp. The warp was 40" wide. These tubes cost \$2.50 each, and so our total warp cost was \$115.00 for the 10 yard warp, or \$11.50 per yard cost.

In the weft, we used 1 lb. 4½ oz. of the 30/3 spun Heliotrope for the tabby and plain weave areas, and we used 9 ounces of the pink, 2/14's spun silk as the pattern thread. The tabby and binder thread was the Helio trope, and this came to \$51.25. The pink 2/14's spun silk is \$32.00 per lb., and our 9 oz. cost us \$18.00. So the tital weft cost was \$69.25 for 8-1/2 yards of finished fabric. Our total weft cost divided by 8.5 comes to \$8.66 per yard.

WARP COST PER YARD-----	\$11.50
WEFT COST PER YARD-----	8.66
=====	
FABRIC COST PER YARD	\$20.16

drafts and designs



a guide for 5 to 12 harness weaves

VOLUME 29, No. 9., May, 1987

DOUBLE DUTY, DOUBLE WEAVE:

This 8 harness double weave, was most easy to weave, after we discovered the right sett for the two different yarns.

THREADING DRAFT:

8	O
7	X
6	O
5	X
4	O
3	X
2	O
1	X

Key to colors in the threading draft:

X--Color # 162, Heather, SUPERWASH WOOL
O--2 PLY, SCOTTISH HOMESPUN HEATHER GREY

WARP:

We used 2 threads in the warp. The solid color is called HEATHER, is a superwash or machine washable wool.

The two ply HEATHER GREY, is a Scottish homespun yarn, which we had 2 plied.

WEFT:

We used the same two colors in the weft, as were used in the warp. They are two completely different threads.

REED USED:

An 8 dent reed was used, and it was sleyed 4 ends per dent, 2 ends each of the Heather Superwash, and 2 ends of the HOMESPUN SCOTTISH HEATHER GREY.



TREADING SEQUENCE:

This is a straight twill treading, treading 1 to 8 and repeating over and over, and alternating threads in the weft

1. Treadle # 1, Superwash, heather
2. Treadle # 2, Scottish homespun
3. Treadle # 3, Superwash, heather
4. Treadle # 4, Scottish homespun
5. Treadle # 5, Superwash, heather
6. Treadle # 6, Scottish homespun
7. Treadle # 7, Superwash, heather
8. Treadle # 8, Scottish homespun

END OF ONE COMPLETE PATTERN REPEAT. Do repeat over and over as desired.

DRAFTS AND DESIGNS:

Published monthly (except July & August) by Robin & Russ Handweavers, 533 No. Adams St., McMinnville, Oregon, 97128.

SUBSCRIPTIONS: \$10.00 per year. Canadian is \$11.00 per year, and foreign subscriptions are \$12.00 per year. Back issues or single issues are \$1.25 each, plus 22¢ postage for each issue.

VOLUME 29, No. 9, May, 1987

TIE-UP DRAFT:

8					0	0	0
7	0				0	0	0
6					0	0	0
5	0	0	0	0	0	0	0
4	0	0	0				
3	0	0	0	0	0	0	0
2	0	0					0
1	0	0	0	0	0	0	0
	1	2	3	4	5	6	7

MORE ABOUT THE THREADS USED:

The Scottish homespun yarn, we have just one color, and it is this heather grey color. It was spun to order for us in Scotland. It came on about 2 to 2-1/2 lb. cones. It seems to have about 900 yards per lb., and the price is \$9.60 per lb.

The superwash wool yarn which is machine washable, comes on 14 to 16 oz. cones, and is an English Import. It is a very, very nice quality of yarn, and it comes in 30 colors, and we have it all in stock. It is \$24.00 per lb., has about 1850 yards per lb.

COST OF THE FABRIC:

In our warp, we used 5 lbs. 13 oz. of Scottish Homespun and 4 lbs. 13 oz. of Superwash Wool. At \$9.60 per lb., and \$24.00 per lb., our total warp cost for 10 yards, 48" wide, came to \$171.30, or the cost per yard was \$17.13.

In the weft, we used 2 lbs. 6 1/2 oz. of Superwash, and 2 lbs. 13 oz. of the Scottish Heather. The total cost of these 2, for 8 yards of finished fabric, which was 46" wide, came to \$10.60 per yard.

WARP COST PER YARD, 48" wide -- \$17.13

WEFT COST PER YARD, ----- 10.60

=====

FABRIC COST PER YARD, 46" wide \$27.73

MORE ABOUT THE FABRIC:

The main thing I want to tell about the fabric is that I thought it was too stiff when I finished weaving it. Then I washed two samples of it, and lo and behold, it turned out beautifully soft and flexible. The homespun yarn from Scotland was spun in oil, and so it had oil in it and it had to be washed. The superwash did not have this oil in it, and I was afraid that one side would make the other side curl up by shrinking indiscriminately, but no such thing happened.

Your sample here has not been washed. I would suggest that you wash it in the hottest tap water you can obtain from your tap. Use lux or something similar. I really was afraid I had sett it too close at 32 per inch, but after washing the samples, I was very, very pleased with the results after washed and dried.

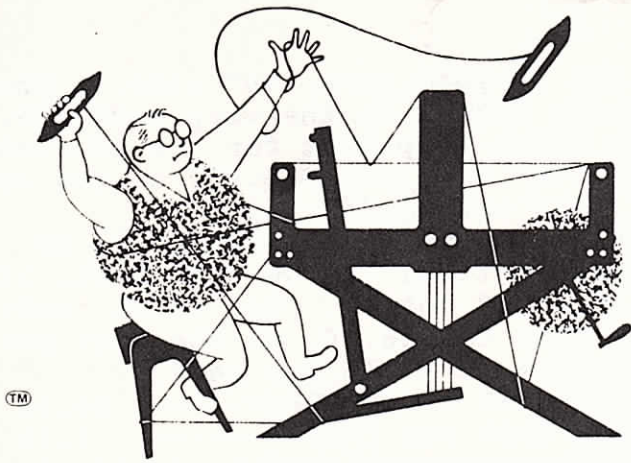
In weaving, the warp tended to cling together somewhat, so I do want to emphasize that you should beat with the shed open, change to the next shed and beat again before you through the shuttle again.

We started off at 40 ends per inch, and I found it too firm, so I changed to the 8 dent reed, 32 ends per inch, and it then wove very easily as compared to 40 epi.

We had a 10 yard warp, and there was a good bit of take-up, as we had 8 yards of finished weaving. Also, our original warp was 40" wide, but after changing to a coarser reed, it was 48" wide, so it did take up more weft thread. Also, we did use 8 threads of 18/3 nylon stitching twine as a selvage.

After finding the correct reed, we were very surprized and pleased at how easy it was to weave this fabric. We did not have one broken warp thread.

drafts and designs



a guide for 5 to 12 harness weaves

VOLUME 29, No. 10

JUNE, 1987

CLOUD NINE, CLOUD NINE.

Yes, this 8 harness, 2 different surfaces weave, does remind one of clouds, and sky and rest and relaxation. You will enjoy the 2 surfaces of this

THREADING DRAFT:

8	X			X
7		X		X
6		X		X
5		O		O
4			X	X
3			X	X
2			X	X
1			O	O

KEY TO THREADS IN THE THREADING DRAFT:

X -- 10/3 natural unmercerized cotton.
O -- Natural, fantasy cotton.

WARP THREADS USED:

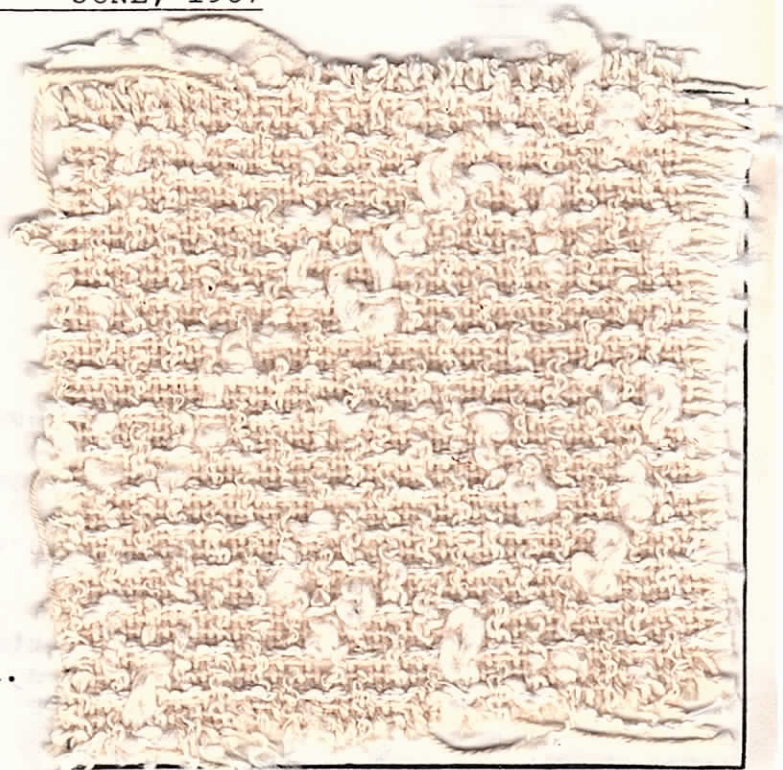
We have used two threads in the warp. One is size 10/3, natural, unmercerized cotton. The other is the cotton we have spun to order for us called "Fantasy Cotton."

WEFT:

The same two threads that are used in the warp are also used in the weft. That is, the 10/3 natural unmercerized cotton and the "fantasy cotton" novelty twist.

REED USED:

A 5 dent reed was used, and it was sleyed, 4 ends per dent. In each dent, there are 3 ends of 10/3 natural unmercerized cotton, and one end of fantasy cotton.



TREADLING SEQUENCE:

Please note that there are 8 shots in each complete pattern repeat. Do repeat over and over as desired.

1. Treadle # 1, 10/3 nat. cotton
2. Treadle # 2, 10/3 nat. cotton
3. Treadle # 3, 10/3 nat. cotton
4. Treadle # 4, fantasy cotton
5. Treadle # 5, 10/3 nat. cotton
6. Treadle # 6, 10/3 nat. cotton
7. Treadle # 7, 10/3 nat. cotton
8. Treadle # 8, fantasy cotton.

End of one complete pattern repeat.
Do repeat over and over as desired.

DRAFTS AND DESIGNS:

Published monthly (except July and August) by Robin & Russ Handweavers, 533 No. Adams St., McMinnville, Ore. 97128.

SUBSCRIPTIONS: \$10.00 per year. The Canadian subscriptions are \$12.00 per year, and foreign are \$13.00 a year. Back issues or single copies are \$1.25 each, plus 22¢ per copy postage. All subscriptions start with the September issue. If you subscribe after September, back issues from September on will be sent to you.

VOLUME 29, No. 10. June, 1987

TIE-UP DRAFT:

8	0	0	0	0	0	0	0
7	0	0	0	0	0	0	0
6	0	0	0	0	0	0	0
5	0	0	0	0	0	0	0
4	0	0	0	0	0	0	0
3	0	0	0	0	0	0	0
2	0	0	0	0	0	0	0
1	0	0	0	0	0	0	0
	1	2	3	4	5	6	7 8

MORE ABOUT THE THREADS:

The natural, fantasy cotton, we have spun to order for us. It has 950 to 1000 yards per lb., and does vary from lot to lot slightly. This yarn was developed for hand-knitting, and we have been utilizing it in hand-weaving for about 5 years now.

The 10/3 natural, unmercerized cotton is one of the nicest cottons we have ever had. We have been using it for about 6 to 8 years now, and it is a thread which was designed for the machine embroidery trade, and which we have been purchasing for hand-weaving.

The 10/3 natural, unmercerized cotton comes on about 2 to 2-1/2 lb. cones, and it sells for \$6.80 per lb. It has 2800 yards per lb.

The fantasy cotton, which is spun to order has approximately 1,000 yards per lb., and it retails at \$9.60 per lb.

COST OF THE FABRIC:

In the warp, we used 2,000 yards of fantasy cotton, or about 2 lbs. of the cotton. And in the weft, we used 2-1/7 lbs. of the 10/3 natural unmercerized cotton. It took 6,000 yards of this

in our 10 yard warp, 40" wide, The fantasy cotton in the warp cost \$19.20.

Our total warp cost for the 10 yard warp, 40" wide was \$33.80, so the cost per yard was \$3.38.

In the weft, we used 1 lb. 11 oz. of fantasy cotton, and we used 1 lb. 12 oz. of the 10/3 cotton. Our total weft cost came to \$28.10, or the cost per yard came to \$3.35 per yard.

WARP COST PER YARD-----	\$3.38
WEFT COST PER YARD-----	3.35
=====	
FABRIC COST PER YARD ----	\$6.73

WIDTH IN REED, AND WIDTH IN REED AFTER WOVEN:

Our warp was set-up in the reed, 40" plus 8 threads of 18/3 nylon stitching twine or 40-4/5" wide.

Because of the nature of this weave, it does weave narrower than expected. It was 37" wide on the loom, after it was woven, and I would venture to say that it will come down another 1/2" to 1" after it is taken off the loom. As every 4th thread is this novelty cotton, it tends to pull the other 3 threads together somewhat, and thus it weaves down narrower than one would expect.

USES FOR THIS FABRIC:

The surface of fantasy cotton, with the background of 10/3 is quite unusual, and it could be used for many decorative fabrics. Also, while we used the natural, if perhaps you had a natural and white, then the surface could be one color and the background the other.

I can see this working beautifully in drapery fabrics, in screens and in room dividers, and other such uses.

ROOM FOR FOUR MORE, in the 2nd WEEK OF OUR SUMMER WORKSHOPS.

We still have room for 4 in our summer workshop with Mr. Jacm Womersley from England. The first week is now full, and we have 11 so far the 2nd week. It will be a fun workshop, so if you'd like to learn more, do sign up. Price is \$125 for the entire week. Includes lectures, and possibly working on 15 different sample set-ups.