

DRAFTS AND DESIGNS

Published monthly (except July and August) by Robin & Russ Handweavers, 632 Santa Barbara Street, Santa Barbara, California.

SUBSCRIPTIONS: \$4.00 per year.
Back issues or single copies, 50¢ ea.
Yearly subscriptions start with the September issue. If you subscribe after September, back issues from September on will be mailed to you, unless you specify that you want your subscription to start with the next September issue.
VOLUME 3, Number 1, September, 1960.

THE DRAFT AND THREADING PLAN

There are actually two parts to the threading draft, A and B. Each of these are 11 threads long. The "A" part is actually the threading for the one pine tree unit, and the "B" is actually the threading for the plain weave in between the pine tree units. Let me tell you how we threaded it, so that we could weave skirt lengths on this particular set-up, as well as weave the samples for Drafts and Designs.

B--31 threads of plain weave on harnesses 1 and 8.

A--Both pattern units repeated a total of three times or 66 threads.
Repeat over and over for full loom width.

MORE ABOUT THE FABRIC:

It was fun to extend the 6 harness pattern of June into an 8 harness pattern for this month's sample. It took a little experimenting on our part, and after one greivous error causing us to set up the loom a second time, we had it down pat.

We wove some skirt lengths on this pattern, weaving three repeats of the border at the bottom of the skirt, 2 repeats of the border in the skirt, about 3 inches above the first border; and then we had just one repeat of the pattern about 5 inches higher.

Actually I felt it would be better to make a much more outstanding skirt

if you had the clusters of pine trees about 4 to 5 inches apart, so we set up the loom again and did just this. In reality, we felt that this was a better plan than just having one inch of plain weave in between each group of pine trees.

There is quite a long float on the back of the fabric, and in making up the skirts, we found that the dress maker could stitch the underside of the fabric, stitching just the pattern threads together, and then cutting off the long float threads between patterns.

This helped make it a more durable fabric, and one that wouldn't give too much trouble to the wearer in pulled threads, as we first feared would be the case.

We hope at some future date, that we can extend this 6 harness pattern to a 10 and then a 12 harness pattern, add more refinements and make an even nicer border pattern. Of course, you do not have to use this just for borders, but this pattern can be used in many other ways, depending upon the imagination of the weaver.

I wish that we could show you this skirt or the series of skirts that we made on this set-up, as they proved to be quite striking.

COST OF THE FABRIC:

We find that for a 40" width warp, one pound of the Egyptian cotton will make a 6 yard warp. Thus the warp comes to approximately 85¢ per yard.

The 7/2 spun douppioni silk weft will weave approximately 4 yards of 40" fabric from one pound of silk, so the weft is approximately \$1.75 per yard.

As for the borders in a skirt, we found that approximately 8 oz. is more than enough for borders, and actually it takes just about 4 oz. We will then give you the actual cost of the material in one skirt, rather than try to break it down any other way.

COST PER SKIRT LENGTH:

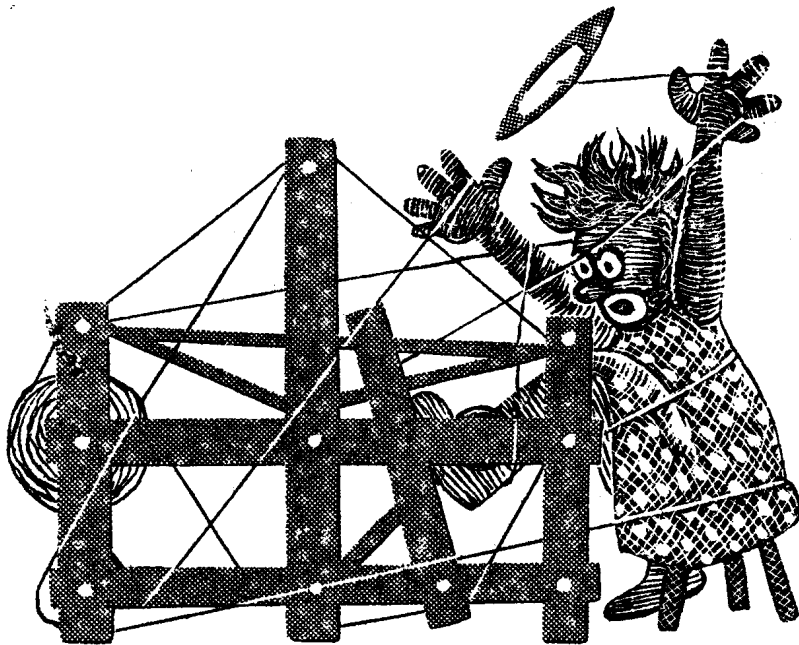
Warp for 1 skirt-----	\$1.70
Weft for 1 skirt-----	\$3.50
Border threads -----	.88
ACTUAL COST PER SKIRT	\$6.08

Of course, if you will weave several skirts, I am sure that the cost will come down accordingly, and if you make a series of them, I think that you can do it for \$5.00 to \$5.50 each.

DRAFTS AND DESIGNS

A guide for 5 to 12
harness weaves

VOLUME 3, No. 2, October, 1960



THREADING DRAFT:

8						X X			X X						
7					X X						X X				
6				X X									X X		
5			X X											X X	
4	X X														X X
3						X X									X X
2	X	X	X	X	X	X	X	X	X	X	X	X	X	X	X
1	X	X	X	X	X	X	X	X	X	X	X	X	X	X	X

PINK DIAMOND

An 8 harness Bronson weave, with a treadling to form a diamond. A fine sheer pattern that would be interesting in sheer draperies, and other similar uses.

WARP USED:

The Warp used was the new cotton put out by Lily's, size 50/3. It is put up on approximately 7 oz. spools, and has 6,000 yards per spool. It is available in white at \$1.50 per spool and in 17 colors; the colors being priced at \$1.80 per spool. It is available from Robin & Russ.

WEFT USED:

The weft used was the same thread as the warp, used entirely for weft.

REED USED:

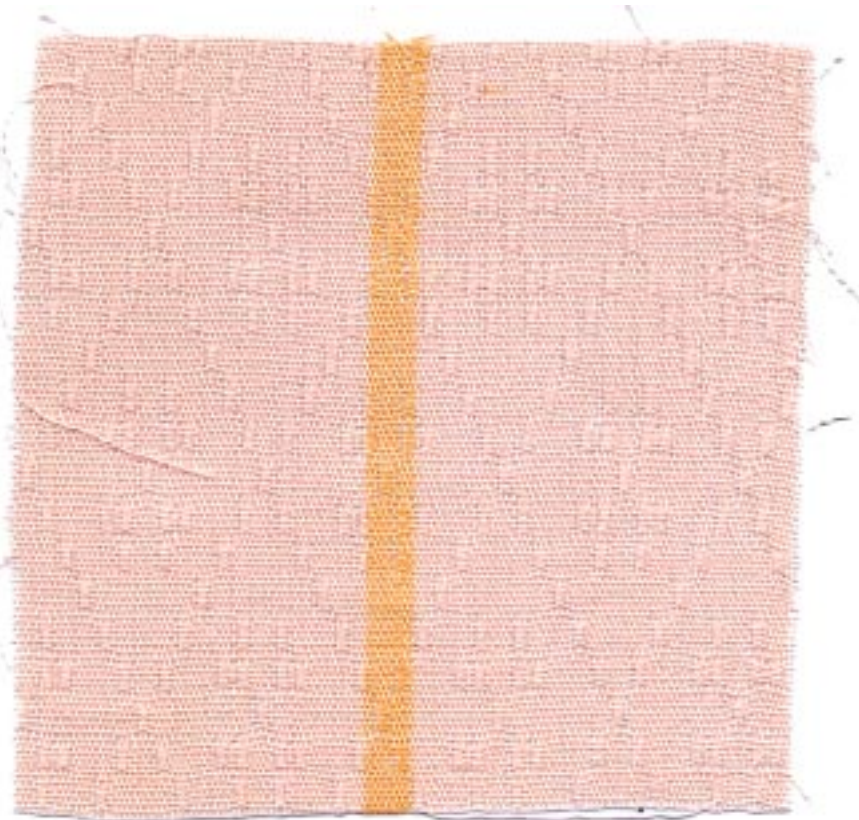
An 18 dent reed was used, and it was sleyed 3 ends per dent, making a total of 54 threads per inch.

MORE ABOUT THE PATTERN:

There are 72 threads in one pattern and while I have not put it down, if you

Sample on next page

desire a border of plain weave on either or both outside edges, this would be threaded on harnesses 1 and 2, repeated over and over for the width of plain border you want. For instance if you want a one inch plain border, all around your table-cloth or place-mat if you use it for this type of weaving, you would thread 54



DRAFTS AND DESIGNS

Published monthly (except July and August) by Robin & Russ Handweavers, 632 Santa Barbara Street, Santa Barbara, California.

SUBSCRIPTIONS: \$4.00 per year. Back issues or single copies, 50¢ each. Yearly subscriptions start with the September issue. If you subscribe after September, back issues from September on will be mailed to you, unless you specify that you want your subscription to start with the next September issue.

VOLUME 3, No. 2, October, 1960

threads on harnesses 1 and 2, and then you would start your 72 thread pattern repeat or unit, and repeat this over and over until you reach the other edge. Then you would add an additional 4 threads threaded on harnesses, 1,3,1,3. Then you would add your 54 threads of 1 and 2's until your set-up is finished and at the desired width.

PLAN FOR 40" WIDTH TABLE CLOTH, sett at 54 per inch.
A--Border, 1,2 repeated----- 70 thds.
B--Pattern 28 times----- 2016 thds.
C--4 threads, 1,3,1,3 to balance the pattern----- 04 thds.
A--Border, 2,1 repeated----- 70 thds.

TOTAL OF WARP ENDS----- 2160

PLAN FOR 16" WIDTH PLACE MATS, sett at 54 per inch.
A--Border, 1,2, repeated--- 70 thds.
B--Pattern, 10 times----- 720 thds.
C--4 threads, 1,3,1,3, to balance the pattern----- 04 thds.
A--Border, 2,1, repeated--- 70 thds.

TOTAL OF WARP ENDS----- 864 ends.

TIE-UP DRAFT:

8		X	X	X	X	X	X		
7		X	X	X	X	X		X	
6		X	X	X	X		X	X	
5		X	X	X		X	X	X	
4		X	X		X	X	X	X	
3		X		X	X	X	X	X	
2		X	X	X	X	X	X	X	
1	X								
	1	2	3	4	5	6	7	8	
	A	B							

TREADLING:

A plain tabby treadling for borders and hems on each end is obtained by treadling treadles 1 and 2 or A and B as they are often called.

There are 6 units or blocks to this 8 harness point Bronson, with 6 threads to each block. I will list below the treadling for each of the 6 blocks or units of Bronson.

- Block 1. Treadle 1,3,1,3,1,2
- Block 2. Treadle 1,4,1,4,1,2
- Block 3. Treadle 1,5,1,5,1,2
- Block 4. Treadle 1,6,1,6,1,2
- Block 5. Treadle 1,7,1,7,1,2
- Block 6. Treadle 1,8,1,8,1,2

Actually in the weaving of this sample, the treadling is exactly the same as the draft, and I will list one complete unit or block sequence below as we wove it.

TREADLING SEQUENCE FOR ONE PATTERN (repeat)

- Block 1, one time
- Block 2, one time
- Block 3, one time
- Block 4, one time
- Block 5, one time
- Block 6, one time
- Block 1, one time
- Block 6, one time
- Block 5, one time
- Block 4, one time
- Block 3, one time
- Block 2, one time

MORE ABOUT THE FABRIC:

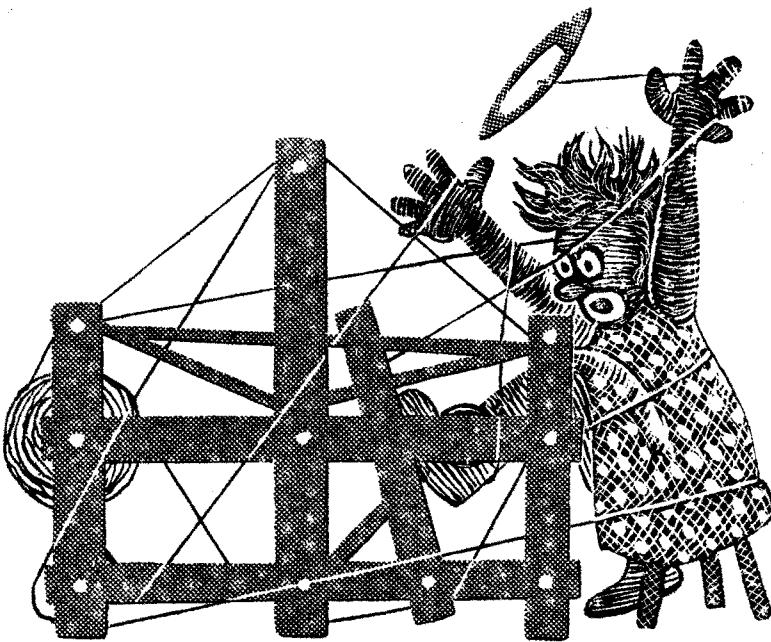
There are many other possibilities with this threading draft. I wish that we could give them all here, but it would take another page or two to do so. I will mention that we tried some 14 different block combinations and achieved very interesting effects, but finally we decided to stick to the diamond pattern, as the sample shows. I suggested using this pattern for table-cloths and for place-mats, but I can see that it would make beautiful drapes, and of course using other threads, textures, and colors, you could make clothing materials, upholstery, etc.

Another thing that I should mention about the pattern is that we feel that if you wash the fabric thoroughly two or three times before using it for your desired usage, the washing makes the lace units group together much more, and as a result makes the pattern more outstanding.

DRAFTS AND DESIGNS

A guide for 5 to 12
harness weaves

VOLUME 3, Number 3, November 1960



THREE BLOCK IMITATION DAMASK

This sample is a 12 harness, three block, imitation damask sample, planned for either a table-cloth or for place-mats.

WARP:

The warp is a 40/2 Natural Ramie, with 6,000 yards per lbs., and it is priced at \$4.50 per lb. It is imported from Switzerland.

WEFT:

The weft is a size 20/1 linen of an intense color value, some of the samples being woven on a bright orange, and others being woven on a bright aqua or a fairly bright pink. It has 6,000 yards per lb.

PROFILE THREADING DRAFT:

C	XX	XXXXXXXXXXXXXXXXXXXX	XXXXXXXXXXXXXXXXXXXX	XX	
B	XX XX	XXXXXXXXXXXXXXXXXXXX	XXXXXXXXXXXXXXXXXXXX	XX XX	
A	XX	XXXXXXXXXXXXXXXXXXXX	X	XXXXXXXXXXXXXXXXXXXX	XX

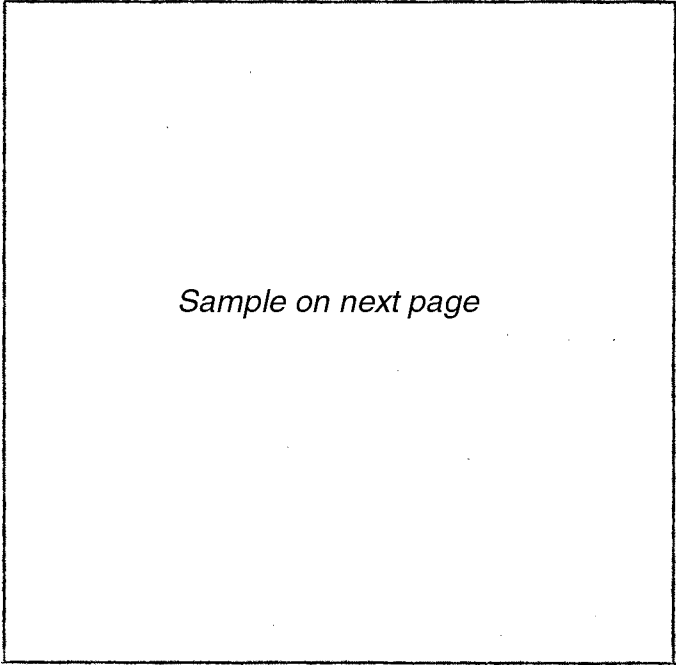
8X
1X
7 times
1X
8X

REED USED:

A 12 dent reed was used, and it was sleyed 4 ends of the 40/2 natural Ramie per dent, making a total of 48 threads per inch.

NOTE ABOUT REED USED:

If I were doing this project over, I think that I would use a 10 dent reed, 4 ends per inch, making 40 warp ends per inch. The 48 per inch worked fine without any hitch, but I think that it

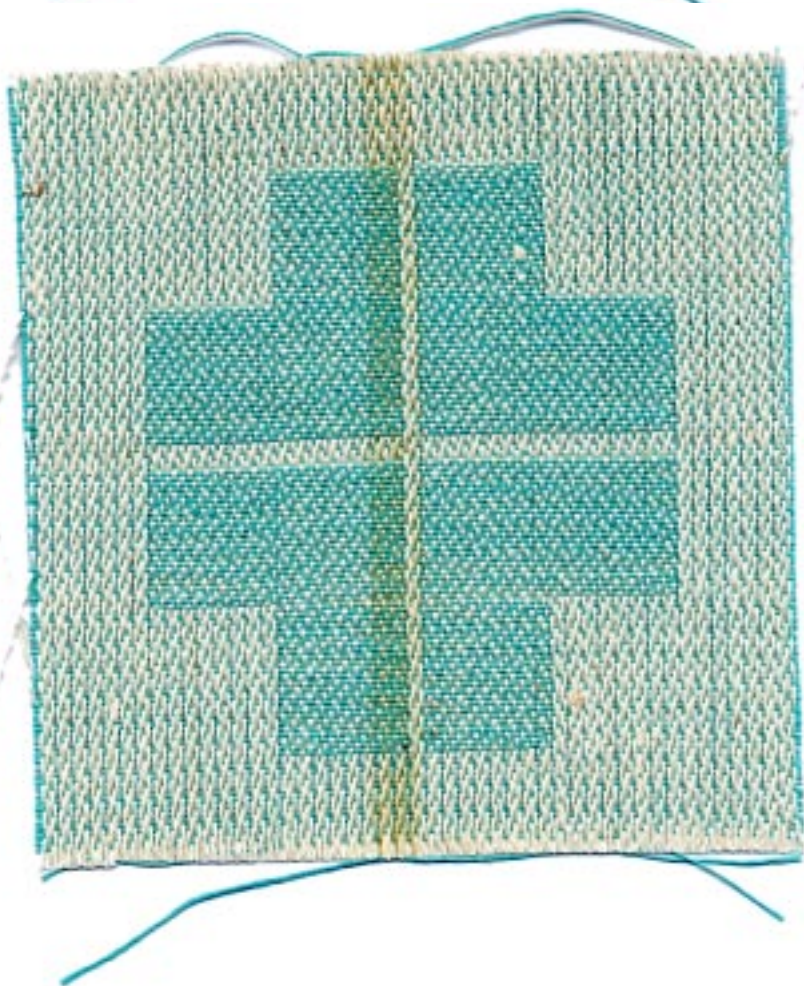
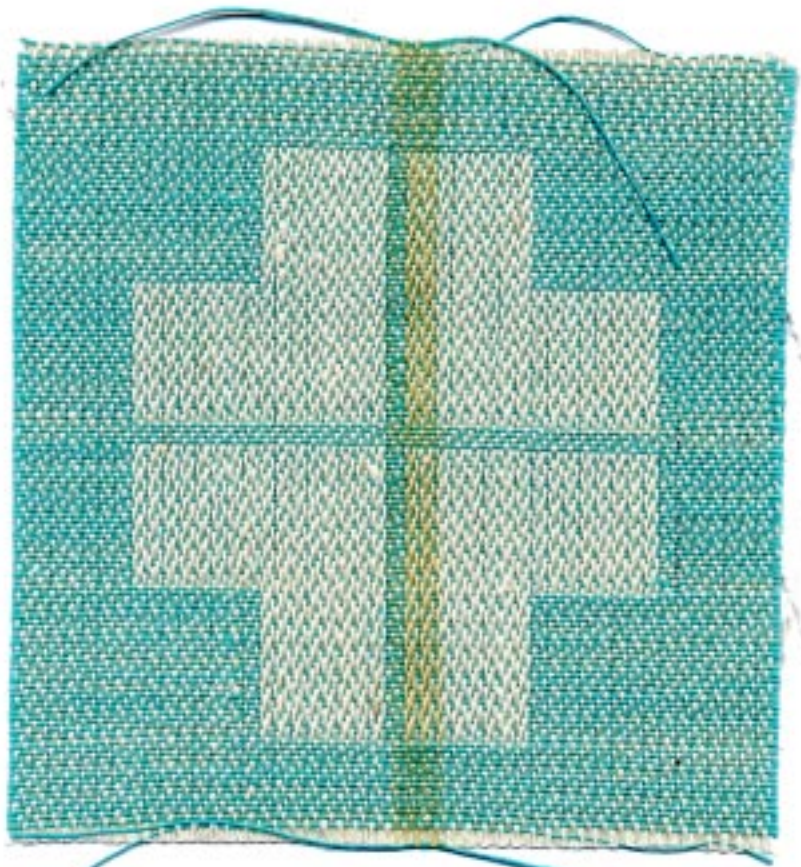


Sample on next page

would work just as well at 40 per inch. I do not think that the bright vivid 20/1 linen for weft would be toned down so much, but I still think it would be nice enough that it did not have the intense color value that it has normally. I'm referring to when the fabric is finished of course.

NOTES ABOUT PROFILE DRAFT:

Each X in the profile draft represents 4 threads. An X on line A represents 4



DRAFTS AND DESIGNS

Published monthly (except July and August) by Robin & Russ Handweavers, 632 Santa Barbara Street, Santa Barbara, California.

SUBSCRIPTIONS: \$4.00 per year.

Back issues or single copies, 50¢ each. Yearly subscriptions start with the September issue. If you subscribe after September, back issues from September on will be mailed to you, unless you specify that you want your subscription to start with the next September issue.

VOLUME 3, Number 3, November 1960

NOTES ABOUT PROFILE DRAFT (continued) threads, threaded in sequence 4,3,2,1. An X on line B represents 4 threads, threaded in sequence 8,7,6,5. An X on line C represents 4 threads, threaded in sequence 12,11,10,9. Also notice under the profile draft that I have an 1 X or an 8 X or a 7 X, which means that that whole unit is threaded once, and then repeated until you have 7 or 8 or 1 time as called for under the draft.

TIE-UP DRAFT:

12			X			X	X	X	X	X		
11	X			X			X	X	X	X		
10			X			X	X	X	X	X		
9		X			X		X	X	X	X		
8			X	X	X	X	X	X	X	X		
7	X			X	X	X	X	X	X	X		
6			X	X	X	X	X	X	X	X		
5		X		X	X	X	X	X	X	X		
4			X			X				X		
3	X			X			X					
2			X			X					X	
1		X			X			X				
	1	2	3	4	5	6	7	8	9	10	11	12

MORE ABOUT THE FABRIC:

We used a ramie warp deliberately to see how nice a fabric it would make, and also to see if it would cause any trouble fuzzing when sett at 48 threads per inch. We had no trouble with the ramie warp, except when there was a knot in the warp, so actually there was no problem, and it was quite easy to weave.

When experimenting and making our first samples for this project, we tried a sett on the ramie of 40 threads per inch. We liked it very much, but we did decide to try it at 48 per inch. When we set-up the loom at 48 per inch, we found that the intensity of the bright

orange linen 20/1 weft thread was cut down, and actually it turned it a peachy pink or I should say a peach instead of orange. We liked this effect better than the more intensity we received when at 40 per inch. However, it also depends upon the color of weft that you use as to the contrast in the blocks and as I mentioned earlier, if I did it over, I would plan this project at 40 per inch rather than 48.

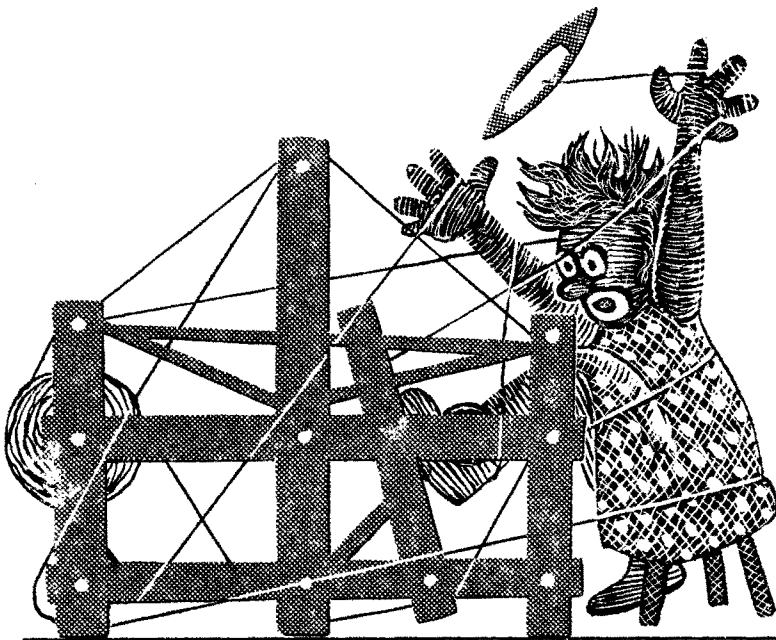
TREADLING PLAN FOR 40" WIDE TABLE-CLOTH

1. Treadle 4,3,2,1 for 2½"
2. Repeat unit A as listed just below a total of 8 times, to make the border on the end of the table-cloth
Unit A.
12,11,10,9—repeat 1 time
8, 7, 6,5—repeat 2 times
12,11,10,9—repeat 1 time
3. Treadle 4,3,2,1—repeat 10 times
4. Repeat unit B as listed just below a total of ten (10) times to make the center unit of your table-cloth.
Unit B.
8, 7, 6, 5—repeat 6 times
12,11,10, 9—repeat 6 times
4, 3, 2, 1—repeat 1 time
12,11,10, 9—repeat 6 times
8, 7, 6, 5—repeat 6 times
4, 3, 2, 1—repeat 10 times
5. Repeat unit A as listed above a total of 8 times to make the border on the opposite end of the table-cloth.
6. Treadle 4,3,2,1 for 2½".

This is the plan for a table-cloth that is approximately 40" wide and approximately 65" long.

COST OF A TABLECLOTH:

A table-cloth 40" wide, x 65" long would cost as follows. For warp it took just shy of 13 oz. of Ramie for a 2½ yard warp, which allows for warp loss on the loom. The 40/2 natural and 40/2 bleached ramie is \$4.50 per lb, and so the entire 2½ yard warp cost us \$3.65. In the weft in one table-cloth of this size, it takes less than 1/2 lb. of the 20/1 linen. This varies in cost depending upon the company which you purchase it from but basing the cost of this table-cloth on the cost of the most expensive 20/1 linen, we found that the weft cost us \$2.35. Thus, the entire table-cloth would cost at the most \$6.00 and if you used a more reasonable weft thread, I think that it could be made for as little as \$5.00.



DRAFTS AND DESIGNS

A guide for 5 to 12
harness weaves

VOLUME 3, No. 4, December, 1960

SWEDISH SNOW-FLAKE

An interesting 8 harness weave that works very well in place-mats, table-cloths, etc.

WARP USED:

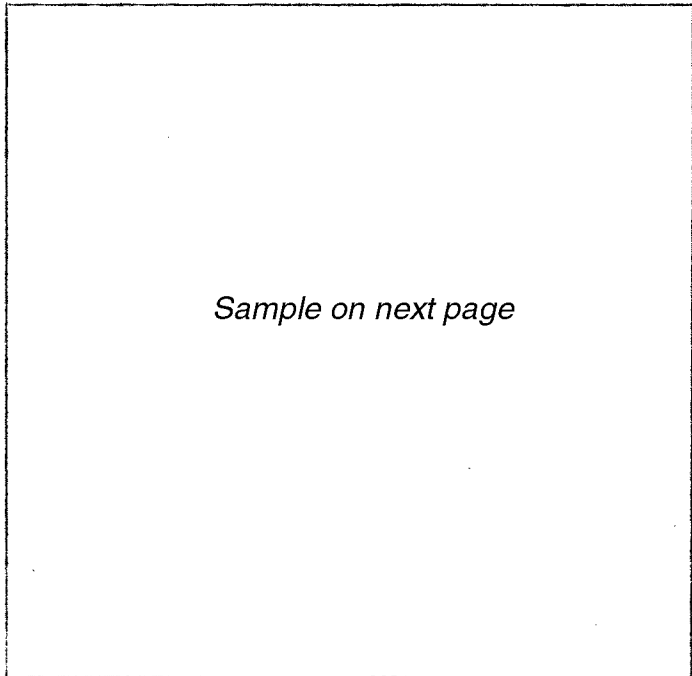
The warp used was a 40/2 Bleached White Ramie, with 6,000 yards per lb., priced at \$4.50 per lb.

WEFT USED:

The weft was a 20/1 Natural Linen, with 6,000 yards per lb. It is priced at \$2.60 per lb. for the natural or \$2.80 per lb. for the bleached white.

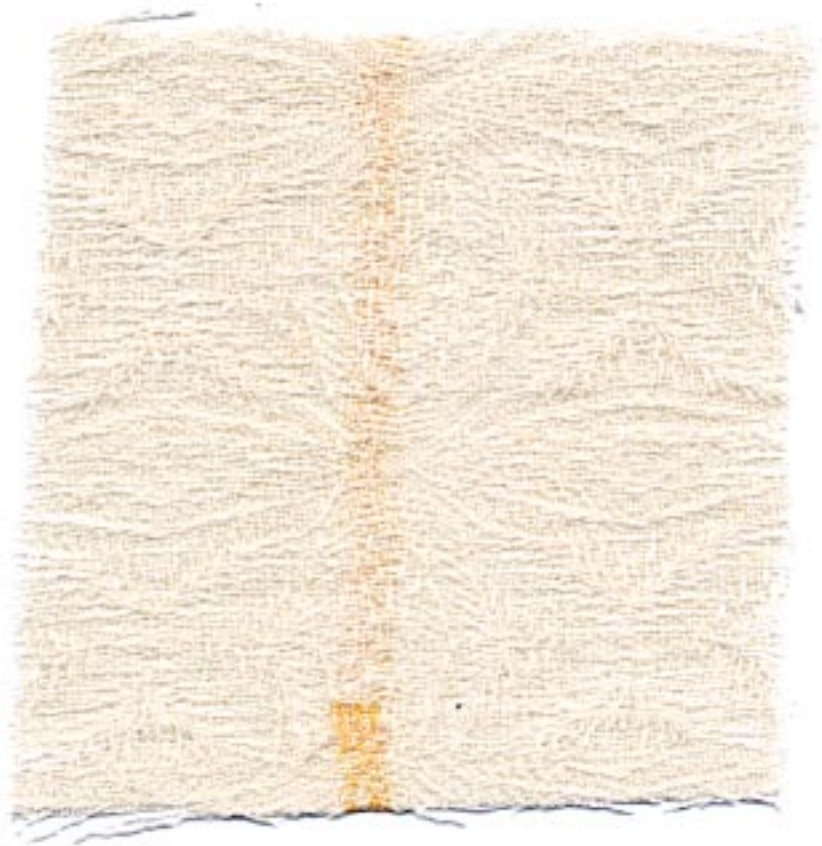
REED USED:

A 15 dent reed was used, and it was triple sleyed, 3 per dent, or 45 threads per inch.



	B										A Border Sel.	
8											8	8
7											7	7
6											6	6
5											5	5
4											4	4
3											3	3
2											2	2
1											1	1

	Sel. Border D								C				
8													
7													
6													
5													
4													
3													
2													
1													



DRAFTS AND DESIGNS

Published monthly (except July and August) by Robin & Russ Handweavers, 632 Santa Barbara Street, Santa Barbara, California.

SUBSCRIPTIONS: \$4.00 per year. Back issues or single copies, 50¢ ea. Yearly subscriptions start with the September issue. If you subscribe after September, back issues from September on will be mailed to you, unless you specify that you want your subscription to start with the next September issue. VOLUME 3, No. 4, December, 1960

TIE-UP DRAFT:

8	X			X	X	X		
7	X			X	X	X		
6			X	X	X		X	
5		X	X	X			X	
4	X	X	X				X	
3	X	X	X		X			
2	X	X		X				X
1	X		X			X	X	
	1	2	3	4	5	6	7	8

TREADLING:

Border—1,2,3,4,5,6,7,8 as long as desired.

1st Figure—1,2,3,4,5,6,7,8,1,2,3,4,7,2,5,8,3,6,1,6,3,8,5,2,7,4,3,2,1,8,7,6,5,4,3,2,1.

2nd Figure—8,2,1,8,7,1,8,7,6,8,7,6,5,7,6,5,4,6,5,4,3,5,4,3,2,4,3,2,1,2,3,4,2,3,4,5,3,4,5,6,4,5,6,7,5,6,7,8,6,7,8,1,7,8,1,2,8.

REPEAT 1st & 2nd Figure as long as is desired.

Repeat 1st Figure to balance pattern
Border—8,7,6,5,4,3,2,1 as long as desired.

COST OF THE FABRIC:

An 11 yard warp was put on, 44" wide, and this took 3 pounds and 12 oz. of warp, 40/2 Ramie at \$4.50 per lb. Thus the warp cost at 44" wide was \$1.53 per yard.

The weft took 2 lbs. 4 oz. of the

20/1 linen for weft, at \$2.60 per lb. so thus the weft came to 59¢ per yard.

A table-cloth, 44" x 72" would cost in all in round figures \$4.25.

PLAN FOR 44" WIDE TABLE-CLOTH

1. Selvage---	3 threads
2. Border 21 times ---	168 threads
3. A to C--17 times	1598 threads
4. C to D--1 time	37 threads
5. Border 21 times	168 threads
6. Selvage	2 threads
	<hr/> 1976 threads

There were 4 threads left over, which we allowed to hang from the warp beam in back, and wound up, as the weaving was done.

PLAN FOR PLACE-MATS (16" Wide)

1. Selvage---	3 threads
2. Border--13 times	104 threads
3. A to C--5 times	470 threads
4. C to D--1 time	37 threads
5. Border--13 times	104 threads
6. Selvage---	2 threads
	<hr/> 720 threads

ABOUT THE FABRIC:

A short piece of this was woven with a 33/1 bleached white Ramie, and this was what we considered the most beautiful of all. When washed and pressed, it was most beautiful, and even though it would take longer to weave, we thought this would be a wonderful table-cloth.

The 20/1 linen works up beautifully also, and it would be your own choice as to whether you use natural or white. My personal preference would be natural on natural, or white on white, but we wanted to have the pattern show up just a little more, so we used the white warp and natural weft.

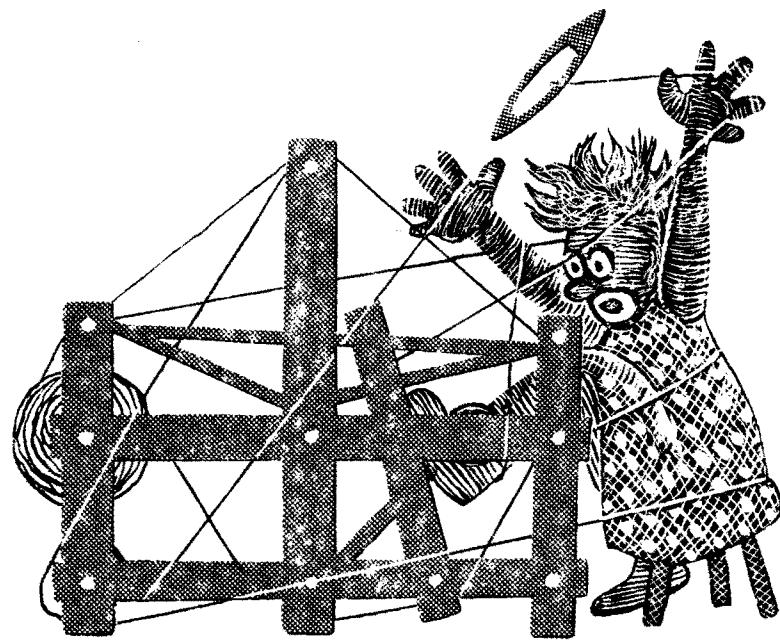
SEASONS GREETINGS

and

The HAPPIEST HOLIDAY SEASON EVER
from

ROBIN AND RUSS HANDWEAVERS

Sandy Selders
Frederick Brown
Janice Susan Groff
Robin (Ursula) Groff
Russell E. Groff



DRAFTS AND DESIGNS

A guide for 5 to 12
harness weaves.

VOLUME 3, Number 5, January, 1961

SQUARES, GREEN AND YELLOW ON A WHITE BACKGROUND. This is a double woven fabric that we thought might be very nice in baby blankets, crib covers, etc.

KEY TO COLORS IN THREADING DRAFT:

W——White Pompadour Baby Yarn
Y——Yellow Pompadour Baby Yarn
G——Green Pompadour Baby Yarn

THREADING DRAFT:

8	W		W									
7		G		Y								
6			W		W							
5			Y		G							
4				Y		Y		Y		Y		
3				W		W		W		W		
2				Y		Y		Y		Y		
1				W		W		W		W		

WARP: Pompadour baby yarn in white, baby yellow, and baby green.

WEFT: Pompadour, the same as was used in the warp.

REED USED: A 10 dent reed was used, and it was double sleyed, 2 ends per dent, making 20 threads per inch.

TIE-UP DRAFT:

8	X	X		X	X		X			X		X
7				X	X		X			X		
6		X	X	X	X		X			X	X	X
5		X				X	X		X			X
4				X		X			X		X	X
3	X	X		X	X	X		X			X	
2		X						X	X	X	X	
1		X	X	X		X	X	X	X			
	1	2	3	4	5	6	7	8	9	10	11	12

Sample on next page



DRAFTS AND DESIGNS

Published monthly (except July and August) by Robin & Russ Handweavers, 632 Santa Barbara Street, Santa Barbara, California.

SUBSCRIPTIONS: \$4.00 per year.
Back issues or single copies, 50¢ ea.
Yearly subscriptions start with the September issue. If you subscribe after September, back issues from September on will be mailed to you, unless you specify that you want your subscription to start with the next September issue.
VOLUME 3, Number 5, January, 1961.

TREADLING WAS AS FOLLOWS:

1. Treadle #1—White P
Treadle #2—Yellow P
Treadle #3—White P
Treadle #4—Yellow P
(Repeat above 4 times—16 threads in all.)
2. Treadle #5—White P
Treadle #6—Green P
Treadle #7—White P
Treadle #8—Yellow P
Treadle #5—White P
Treadle #6—Yellow P
Treadle #7—White P
Treadle #8—Green P
3. Treadle #9—White P
Treadle #10—Yellow P
Treadle #11—White P
Treadle #12—Yellow P
(Repeat above 4 threads 4 times - 16 threads in all.)
4. Treadle #5—White P
Treadle #6—Green P
Treadle #7—White P
Treadle #8—Yellow P
Treadle #5—White P
Treadle #6—Yellow P
Treadle #7—White P
Treadle #8—Green P

END OF ONE PATTERN REPEAT. START OVER FROM TOP AND REPEAT AS DESIRED.

COST OF THE FABRIC:

We set up the loom 40" wide, and find that a 40" square baby blanket costs approximately \$4.00, or a little less. It takes 11½ oz. for warp and weft, for each 40" square. Of course, then a 40" x 60" size would cost \$6.00. This is both Warp and Weft. This also makes a little heavier baby blanket than usual,

and that is one thing that we have often thought about hand-woven baby blankets, that in many cases, they are too light to be really warm. The extra threads in this make it about 1/3 heavier than normally this same material would be used in a normal set-up of 15 per inch.

MORE ABOUT THE THREADING AND FABRIC:

One thing I want to mention is for you to be sure that you balance your pattern when threading the loom. You notice that the first 16 threads are on harnesses 1 to 4. When you start threading your loom, your first 16 threads will be on these 4 harnesses. When you finish threading your loom on the other side, be sure that you end by having the same 16 threads on harness 1 to 4 to make your blanket balanced on both selvedge edges.

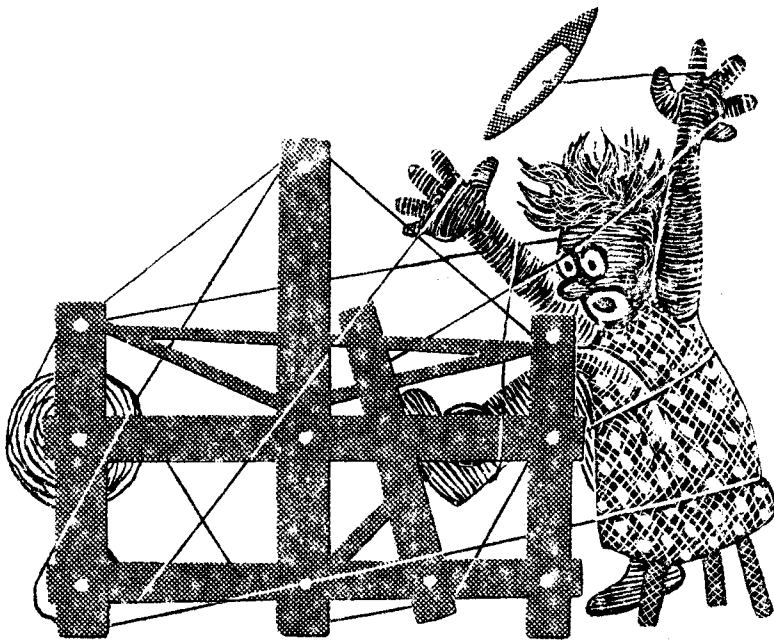
An interesting weave is the double weave, and this is just one of the many, many variations that are possible in it. We hope to feature more of these in the future for your interest and use.

The pompadour yarn used in the fabric is extremely nice, and is not too expensive, as it is \$5.40 per lb., or if less than 1 lb. of a color is purchased, it is 69¢ per 2 oz. skein. It has 2240 yards per lb. or 280 yards per 2 oz. skein. This is a regular stock item, and is available in white, lavender, baby pink, baby blue, baby yellow, baby green.

A NEW CARD WEAVING BOOK:

I'm as pleased as punch about it, and want to tell everyone. Our new card-weaving book is now printed and available. It has 53 complete patterns in it, plus all the necessary directions for each of these patterns. There is also a step by step explanation of card weaving as well as a series of photographs showing each step in this interesting technique. All 53 of the patterns are also illustrated in the book with photographs taken by myself, and the entire lay-out and set-up was one that Robin and I planned. We feel it is an interesting and worth-while spiral bound book on a weaving subject which receives little recognition. The price is \$3.50, postage prepaid.

—Russell E. Groff, Editor



DRAFTS AND DESIGNS

A guide for 5 to 12
harness weaves

VOLUME 3, Number 6, February, 1961

A WARP PATTERNED TABLECLOTH

Here is an interesting 8 harness weave which we have planned for a very interesting tablecloth, with the pattern being formed or created by the warp thread floats.

WARP USED:

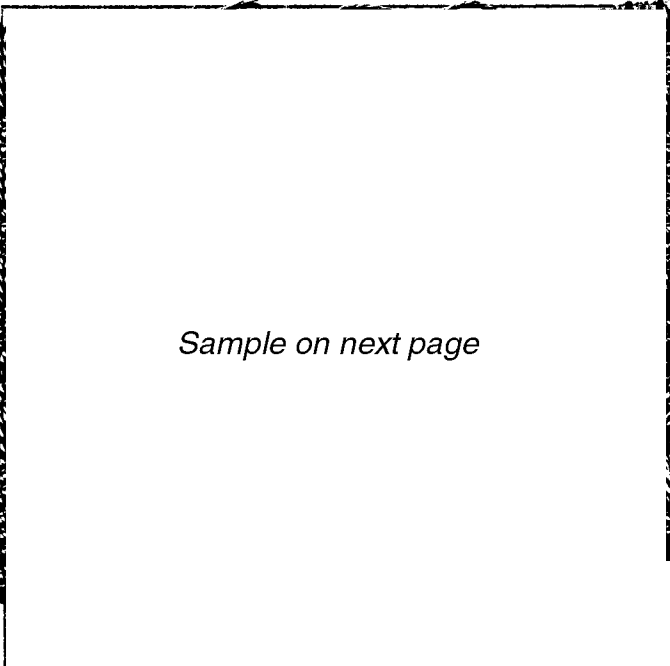
A 10/2 cotton was used in two different colors, listed as follows:
 X---10/2 cotton, Canton Green
 O---10/2 cotton, Green

WEFT USED:

A size 20/2 egyptian cotton in the Canton Green was used as weft.

REED USED:

A 12 dent reed was used and it was sleyed 4 ends per cent, or 48 threads per inch.



Sample on next page

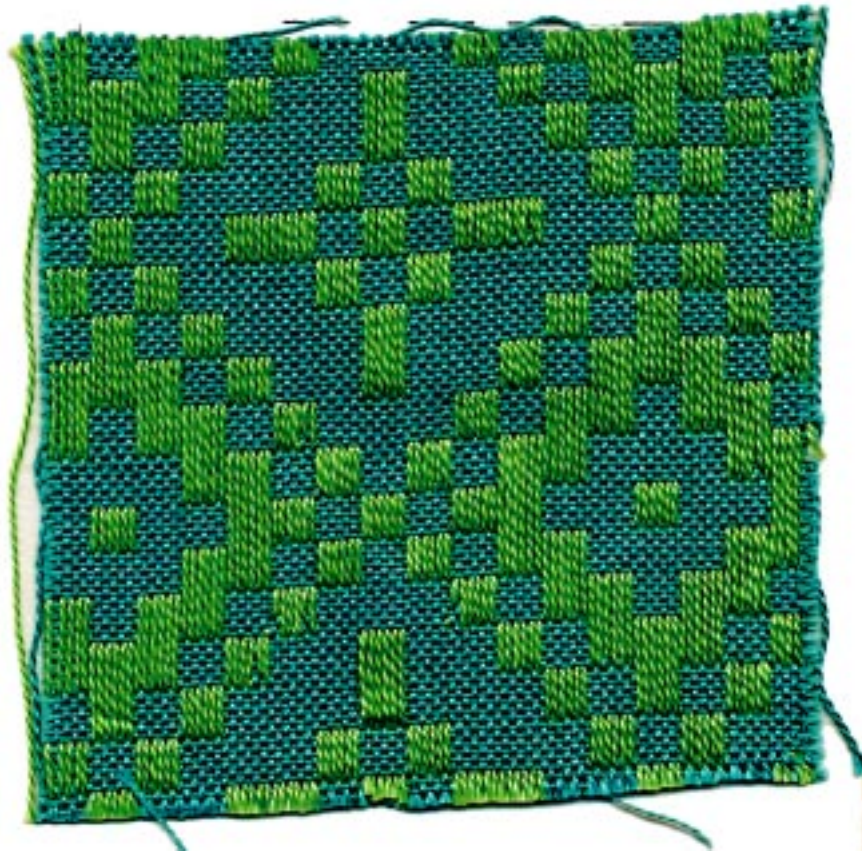
KEY TO COLORS IN THE WARP:

X--Canton Green 10/2 cotton
 O--Green 10/2 cotton

THREADING DRAFT:

	Selv	A.	B.	C.	D.	E.	F.	G.	F.	E.	D.	C.	B.	A.	Selv.
8							O O		O O						
7						O O				O O					
6					O O						O O				
5				O O								O O			
4			O O										O O		
3		O O						O O						O O	
2	X X	X	X	X	X	X	X	X	X	X	X	X	X	X	X X
1	X X	X	X	X	X	X	X	X	X	X	X	X	X	X	X X
	5X	3X	3X	3X	3X	3X	3X	3X	3X	3X	3X	3X	3X	3X	5X

-----one pattern repeat 144 threads-----



DRAFTS AND DESIGNS

Published monthly (except July and August) by Robin & Russ Handweavers, 632 Santa Barbara Street, Santa Barbara, California.

SUBSCRIPTIONS: \$4.00 per year.
Back issues or single copies, 50¢ each.
Yearly subscriptions start with the September issue. If you subscribe after September, back issues from September on will be mailed to you, unless you specify that you want your subscription to start with the next September issue.
VOLUME 3, No. 6, February, 1961.

TIE-UP DRAFT:

8				X	X		X		
7			X	X		X			
6		X	X		X			X	
5		X		X				X	
4			X				X		
3		X			X	X		X	
2	X								
1	X								
	1	2	3	4	5	6	7	8	9
	X	Y							

PLAN FOR 40" WIDE TABLECLOTH:

1. Selvage (on harnesses 1 & 2) 20 thds
2. Pattern (repeat 13 times) 1872 thds
3. A unit to Balance Pattern 12 thds
4. Selvage (on harnesses 1 & 2) 20 thds
<u>TOTAL NUMBER OF WARP ENDS 1920</u>

At 48 threads per inch, 40" wide, this comes to a total of 1920 warp threads.

COST OF FABRIC:

In a project of this type, we believe in using the best material available, and we have used the 10/2 cotton, which is furnished us by the suppliers of our 20/2 egyptian cotton. It is fast color, and long wearing, and is long staple cotton, and even though more expensive, that is why we use this cotton.

WARP COST PER YARD, 40" WIDE	\$2.25
WEFT COST PER YARD	.75
Total Cost per Yard	<u>\$3.00</u>

TABLECLOTH, 40" x 60"—Actual Cost of threads in one would be \$5.00.

SELVEDGE:

Please make sure that you notice that the 20 selvedge threads on each edge of the table cloth are all of one color, Canton Green. In the pattern, you will note that the color alternates, 1 thread of Canton Green and 1 of Green.

TREADLING:

Please note that I have numbered the treadles from left to right, 1 to 9. Actually, the #1 treadle is often called the X treadle and the #2 treadle is often called the Y treadle. Treadles 1 and 2 or X and Y are the background treadles, and treadles 3 through 9 are the pattern treadles. In this weave, you also step on two treadles at once, and it is the X treadle and a pattern treadle and then the Y treadle and a pattern treadle. You alternate between the X and Y treadle to give you a plain weave background, and you use the treadles 3 through 9 for the pattern. Here is the treadling as we used it in this pattern:

Treadle 1-3 & 2-3 alternately for 6 shots
Treadle 1-4 & 2-4 alternately for 6 shots
Treadle 1-5 & 2-5 alternately for 6 shots
Treadle 1-6 & 2-6 alternately for 6 shots
Treadle 1-7 & 2-7 alternately for 6 shots
Treadle 1-8 & 2-8 alternately for 6 shots
Treadle 1-9 & 2-9 alternately for 6 shots
Treadle 1-8 & 2-8 alternately for 6 shots
Treadle 1-7 & 2-7 alternately for 6 shots
Treadle 1-6 & 2-6 alternately for 6 shots
Treadle 1-5 & 2-5 alternately for 6 shots
Treadle 1-4 & 2-4 alternately for 6 shots

Repeat over and over.

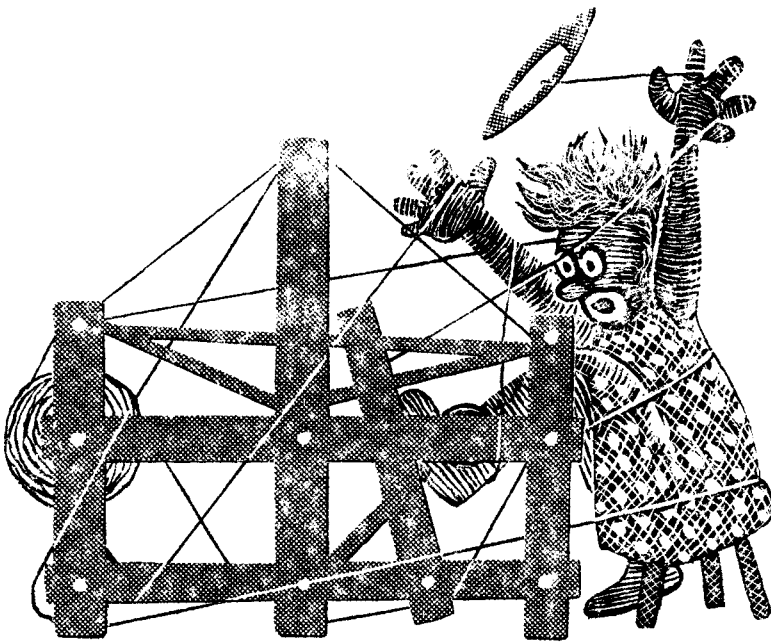
On last repeat of pattern in tablecloth, be sure to treadle 1-3 and 2-3 alternately for 6 shots to balance pattern, this being the last 6 shots of your pattern. For the plain weave for a hem, treadle 1 and 2 alternately for as long a hem as desired. This will give a long float thread on the back, which will be turned under the hem.

MORE ABOUT THE PATTERN AND SAMPLE:

This is an extremely versatile pattern, and with a change in tie-up, you can easily work out many interesting pattern variations. It is our intention at a later date to use this same pattern, with a different tie-up and different choice of materials, and make another interesting sample. We wove about 12 different samples in all before deciding upon this particular variation, but none of the samples were as striking, we felt, as this.

Also, please note that in our tie-up draft, treadle #9 is exactly the same as treadle #3. However, we did this because it is much easier to follow the treadling sequence by having treadle #9, rather than having to treadle up to 8, back to three, and then back to 8 again.

—Russell E. Groff, Editor



DRAFTS AND DESIGNS

A guide for 5 to 12
harness weaves

VOLUME 3, Number 7, March, 1961

AN UNDULATING TWILL

An interesting 8 harness weave for upholstery, drapery, and other such materials. Would be excellent for bed-spreads, etc.

WARP: 20/2 black egyptian cotton

WEFT: 16/2 Ramie, color Orange Rust

REED USED: An 18 dent reed was used and it was sleyed 2 per dent or 36 threads per inch.

TIE-UP DRAFT:

8	0	0	0	0	0				
7		0	0	0		0			
6			0	0	0		0		
5				0	0	0		0	
4	0				0	0	0		
3		0					0	0	0
2	0		0					0	0
1	0	0		0					0
	1	2	3	4	5	6	7	8	

PLAN FOR 40½" WIDE MATERIAL

Selv.--8, then 1 to 8-- 09 threads
 Pattern A to B--11 times 1430 threads
 To Balance Pattern
 B to C---just one time 11 threads
 Selv.--8 to 1--one time 08 threads
WARP ENDS 1458 threads

At 40½" wide, 36 threads per inch, you have a total of 1458 warp ends.

Sample on next page

TREADLING:

Treadle 1 to 8----4 times
 Treadle 7 to 1----1 time
 Treadle 8 to 1----2 times
 Treadle 8 to 2----1 time
 End of one pattern repeat. On the last pattern repeat, you should end with a #1 treadle to balance pattern.

ALTERNATE TREADLING:

Treadle 1 to 8----2 times
 Treadle 7 to 1----1 time
 Treadle 8 to 2----1 time
 End of one pattern repeat. On the last pattern repeat, you should add a #1 treadle to balance pattern.



DRAFTS AND DESIGNS

Published monthly (except July and August) by Robin & Russ Handweavers, 632 Santa Barbara Street, Santa Barbara, California.

COST OF THE FABRIC:

We made an 11 yard warp from 2 lbs. of the black egyptian cotton at 40 $\frac{1}{2}$ " wide. Thus, our warp came to 91¢ per yard.

We used 4 $\frac{1}{2}$ lbs. of the 16/2 Ramie for weft on the 11 ysrds of warp, and so our weft came to \$2.02 per yard.

WARP COST PER YARD .91
WEFT COST PER YARD 2.02
 FABRIC COST PER YARD 2.93

SUBSCRIPTIONS: \$4.00 per year. Back issues or single copies, 50¢ each. Yearly subscriptions start with the September issue. If you subscribe after September, back issues from September on will be mailed to you, unless you specify that you want your subscription to start with the next September issue.
 VOLUME 3, No. 7, March, 1961.

THREADING DRAFT

8		X	X	X		XXX		X	X	
7		X		X	X		XXX		X	X
6		X	X		X		XXX		X	
5		XX		X		XX		XX	X	X
4		XX		X	X		XX			
3		XX				XX		XX	X	X
2		XX		X	X		XX		XX	X
1		XX		X	X		XX		X	X

←-----A

8		X	X		X	X	X		X	X		XXX
7		X	X		X	X	X		X	X		XXX
6			X		X	X	X			X		XXX
5		X	X		XX		X	XX		X	X	XX
4					XX		X	X		XX		XX
3		X	X		XX			XX	X	X		XX
2			X		XX		X	X		XX	X	XX
1		X			X		X		XX		XX	

C ←-----B

MORE ABOUT THIS FABRIC:

This is an unusual pattern, and it is kind of hard to keep track of when weaving. You should always make it a point to start and stop in the same place in this type of pattern to try and keep track of exactly where you are. This makes the weaving much easier.

I think this will make an excellent upholstery material, and a good bed-spread also. I'm sorry that we did not make enough extra that we would have some for our own use.

A NOTE ABOUT THE FEBRUARY SAMPLE

I wanted to be sure and tell you that we did have a little trouble weaving the sample last month, after I wrote up the bulletin.

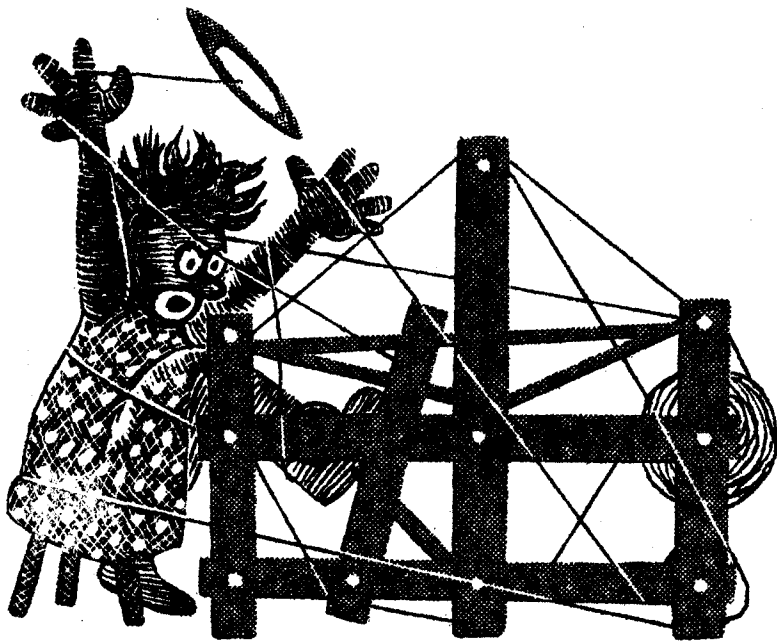
The problem was the float threads on top creating the fabric became quite

loose. The solution to this problem of course is to have one color of your warp threads on one warp beam, and the other color on your second warp beam. If you do this, you can control the tension on each color individually, and then you will not have the trouble that we did when we had all our warp threads on one warp beam.

Actually, the float threads were held down somewhat by the background threads, and as a result did not always weave a clear concise pattern as it should have. We had no trouble the first yard or two, but after that, we had quite a bit.

This warp faced fabric or warp pattern fabric is almost a double weave, and if one set of threads on a double weave is not tied down as much as the other, then you always have a tension problem, as we did on our sample. Hope this catches everyone before anyone tries to weave the Feb. sample on just one warp beam.

—Russell E. Groff, Editor



DRAFTS AND DESIGNS

A guide for 5 to 12
harness weaves

VOLUME 3, Number 8, April, 1961

LUSTERITE:

A luxurious silk fabric in a 7 harness weave. An interesting texture or lacey effect was our goal in making this fabric and we suggest it for use in drapes, room dividers, etc.

WARP:

The warp is a $5\frac{1}{2}/1$ spun silk, with some 4600 yards per lb. It is \$6.00 per lb., and comes on cones of about 1 lb. 4 oz. each.

WEFT:

The weft thread is exactly the same as the warp, the $5\frac{1}{2}/1$ spun silk.

REED USED:

A 15 dent reed is used, and it is double-sleyed, 2 ends per dent, or 30 threads per inch.

COST OF THE FABRIC:

On a 40" width material, we found that it took 2 and $\frac{6}{10}$'s lbs. of warp. This came to \$15.60, for a 10 yard warp, or a total of \$1.56 per yard. In the weft, it takes just as much yarn as the warp, so the weft also is \$1.56 per yard.

WARP COST PER YARD.	\$ 1.56
WEFT COST PER YARD.	\$ 1.56
<u>FABRIC COST PER YARD</u>	<u>\$ 3.12</u>

Sample on next page

TIE-UP DRAFT:

7		X	X	X	X	X		
6							X	
5						X		
4				X			X	
3			X			X		
2	X		X		X		X	
1		X		X		X		
	1	2	3	4	5	6	7	
						A	B	

TREADLING:

On our sample we have a straight and simple treadling of 1,2,3,4,5,6,7, and repeat this over and over.



DRAFTS AND DESIGNS

Published monthly (except July and August) by Robin & Russ Handweavers, 632 Santa Barbara Street, Santa Barbara, California.

SUBSCRIPTIONS: \$4.00 per year. Back issues or single copies, 50¢ each. Yearly subscriptions start with the September issue. If you subscribe after September, back issues from September on will be mailed to you, unless you specify that you want your subscription to start with the next September issue. VOLUME 3, No. 8, April, 1961.

THREADING DRAFT:

	D	C	B	A
7	X		X	
6	X	X	X	
5	X		X	
4	X	X		
3	X		X	
2		X X	X X	X X
1		X X	X X	X X

MORE ABOUT THIS FABRIC:

When you examine this threading draft and look at it closely, you can see that it is composed of portions of 3 weaves. It is composed of first of all a plain weave unit which is A to B, and then it has a point twill unit, which is from B to C, and last; it has a double plain weave, which is from C to D.

And yet, when you look at the overall effect, it is a very pleasing one. I also can see from this, that it could very easily be changed into an 8, 9, 10, 11, or 12 harness weave, and just by extending the point twill portion of the pattern, you would be able to get some very interesting effects. We really should extend this further, and weave another sample at a later date, and if we can, you will be astounded as to the effect of just extending the point twill portion of the weave.

This was a pleasing and fairly easy fabric to weave except for one thing. After about 5 or 6 yards, we had to stop and cut apart some of the threads in the double plain portion of the weave, as the silk tended to fuzz just slightly and only in that portion of the set-up where we had the double plain weave area. So we took a little time, cut off this fuzz which had accumulated, and then we took some weavol, a special warp dressing to eliminate such problems,

dampened a rag with the weavol, and rubbed it over the silk warp behind the heddles, and lo and behold, no more problems.

We sell such items as these and often forget to use them ourselves, but I have often felt that this "WEAVOL" is a very good bargain because it is such a time and work saver. It does not take much preparation, as you just mix as directed one part of weavol to five parts of water, apply on your warp with a damp cloth or windex atomizer, and then when through weaving, dip your fabric in water, and the weavol is entirely dissolved. It

costs \$1.25 per can, and is well worth while. One can is enough for about 30 to 40 yards of fabric if you have that much troublesome material.

Also, notice that one side of the material has a longer float or skip than the other. It is up to the individual, as to which side they prefer to be exposed in their drapes.

The silk that we have used here is a single ply spun silk warp. It has a beautiful sheen or luster, and is very easy and nice to work with. It is \$6.00 per lb. not too expensive for the nice quality silk that it is.

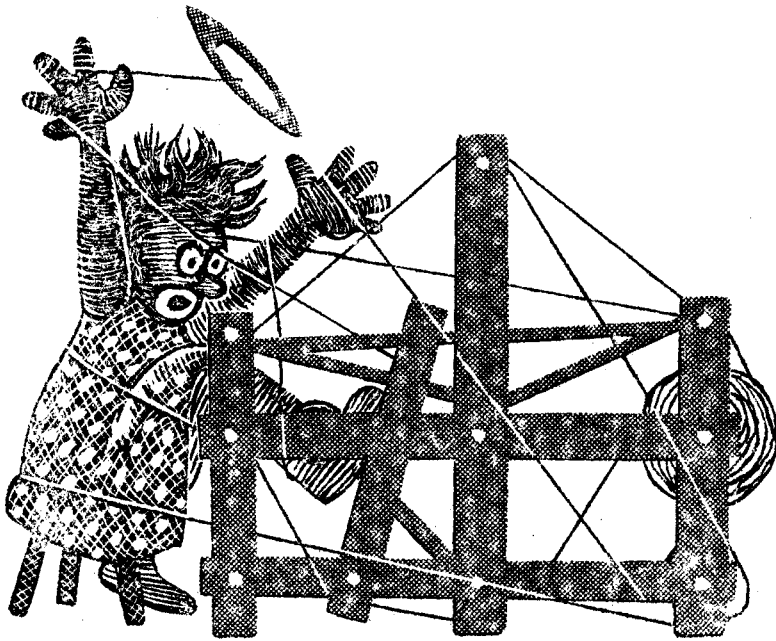
ALTERNATE TREADLINGS:

There are some very interesting effects that can be achieved on this same set-up using the same tie-up and also different tie-ups, and different treadling combinations. Using the same tie-up that we have on this sample, I am going to give you three other very striking treadlings.

Here they are:

1. Treadle 1,2,1,2,1,2,1,2,3,4,5,6,7,6,5,4,3,2 and repeat
2. Treadle 7,6,7,6,7,6,7,6,5,4,3,2,1,2,3,4,5,6 and repeat
3. Treadle 1,2,3,4,5,6,7,6,5,4,3,2 and repeat over & over.

Actually on our sampler we wove about 12 different treadling combinations. Those we gave are the ones we liked best. Others might like other effects better. Try it!



DRAFTS AND DESIGNS

A guide for 5 to 12
harness weaves

VOLUME 3, Number 9, May 1961

LEMON GREY

An all Ramie fabric which would make excellent drapery material, and which was planned just for this purpose.

THREADING DRAFT

	C		B		A
8			A		A
7			A		A
6			A		A
5			A		
4		X			
3		X	X		
2	X		X		
1	X		X		
	Repeat 10 times			Repeat 10 times	

NOTE ABOUT ONE PATTERN REPEAT.

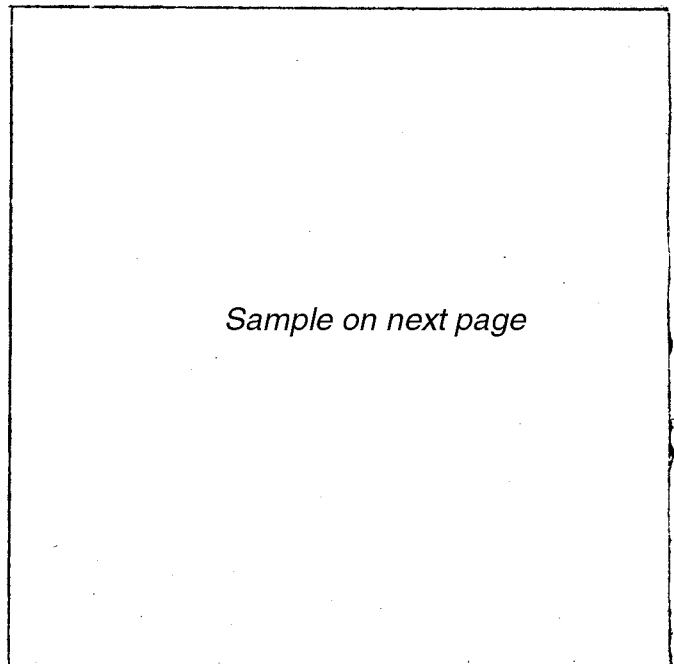
For one complete pattern repeat of the threading draft, you repeat A to B ten times, and then you repeat B to C 10 times, making a total of 140 threads in one complete pattern repeat.

REED USED:

An 18 dent reed was used and it was sleyed 2 ends per dent, or 36 threads per inch.

KEY TO COLORS IN THE WARP

A--40/2 natural colored Ramie
X--40/2 Bleached White Ramie



TIE-UP DRAFT

8		X		X		X		
7	X		X		X			
6		X		X				X
5	X		X				X	
4		X				X		X
3	X				X		X	
2				X		X		X
1			X		X		X	
	1	2	3	4	5	6	7	8



DRAFTS AND DESIGNS

Published monthly (except July and August) by Robin & Russ Handweavers, 632 Santa Barbara Street, Santa Barbara, California.

SUBSCRIPTIONS: \$4.00 per year. Back issues or single copies, 50¢ each. Yearly subscriptions start with the September issue. If you subscribe after September, back issues from September on will be mailed to you, unless you specify that you want your subscription to start with the next September issue. **VOLUME 3, Number 9, May, 1961.**

WARP THREAD USED:

The warp thread used was a 40/2 natural and a 40/2 bleached white Ramie, set at 36 threads per inch. This Ramie has the same yardage per lb. as a 40/2 linen, or 6,000 yards per lb. It is priced at \$4.50 per lb.

WEFT THREADS USED:

There are two threads in the weft. One was the 40/2 natural Ramie, which has 6,000 yards per lb., and is \$4.50 per lb. The other was the 16/1 Ramie in a Lemon Yellow color. This is a sun-fast and wash-fast color. The 16/1 Ramie has 4800 yards per lb., and it is \$5.00 per lb., or \$1.25 per 4 oz. spool.

TREADLING SEQUENCE FOR THIS MATERIAL

There are two parts to the treadling, and the first part of it you use the 16/1 Lemon Ramie and treadle 4,3,2,1,2,3,4.

Then you treadle 5,6,5, using the 40/2 natural Ramie, the same as that which was used for warp.

MORE ABOUT THE FABRIC:

Robin wanted a drapery fabric for Janice's room at home, so with this in mind, and looking for durability, and yet a pleasant color to go with the light yellow walls in Janice's room, this is the fabric that we came up with.

The warp of course was alternately 70 threads of natural Ramie and 70 threads of white Ramie. Then for the weft, we tried quite a few treadlings using the fairly bright colored 16/1 Lemon Ramie along with the natural and white. We liked the way the Lemon colored Ramie, when combined with the natural, gave a

definite greyed appearance to the 40/2 natural Ramie, and so you have the resulting fabric.

This is quite easy to weave, as you have just 2 treadles, using 7 shots of the 16/1 lemon and then 3 shots of the 40/2 natural Ramie.

Also, from th experimenting with the treadling that we did, we found several different treadlings that we particularly liked. Of course the natural or regular treadling would be to treadle 8,7,6,5,6,7,8 ten times and then treadle 1,2,3,4,3,2,1 ten times. We were not too sold on this so we experimented and used several other treadlings, and after a yard of the experimenting, we decided that we liked the treadling we have given you the best.

Also, we have in the past, often felt that using a 40/2 linen at 30 per inch was not close enough, and knowing that the 40/2 Ramie had the same yardage, we started our narrow 8" sample swatch at 36 per inch, and were very pleased with this, so on the full 40" wide fabric, we used 36 per inch.

The sample is not washed, but the nice thing about the sample is that it will shrink very, very slightly in the initial washing, and after that it will not shrink at all. Also, it is rot-resistant, mildew-resistant, will not stretch, and so is an excellent material for drapes.

I should also mention that we wove drapes for Janice's room about 4½ to 5 years ago of a cotton warp, and a silk weft. The cotton is holding up fine, but as a result of exposure to the direct afternoon sun, the silk is just now about disintegrated, and just falls apart, while the cotton holds up fine.

This is the reason for our choice of the Ramie for the drapes in this room, that we will not have to do them over again in 4 or 5 years as we are doing this time.

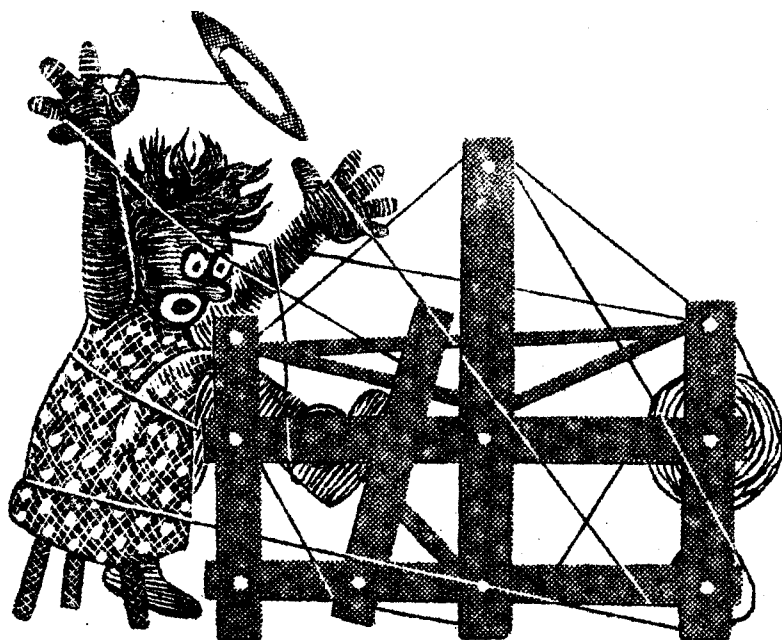
COST OF THE FABRIC: We had a 20 yard warp, 40" wide, and the 40/2 Ramie in both natural and bleached is \$4.50 per lb. It took 4 and 4/5 lbs. of Ramie for the 20 yard warp, so the warp cost came to \$1.08 per yd.

For weft in our 19 yards of finished material, it took 2½ lbs. of the 16/1 Lemon Ramie and 1 lb. of 40/2 natural Ramie. This came to \$22.00 for 19 yards, so our weft comes to \$1.16 per yard.

WARP COST PER YARD:	\$1.08
WEFT COST PER YARD:	\$1.16
FABRIC COST PER YARD	\$2.24

DRAFTS AND DESIGNS

A guide for 5 to 12
harness weaves



VOLUME 3, No. 10, June, 1961

FLOATING DIAMOND

An interesting sample in an 8 harness weave. The pattern is created by the warp threads, and it is a very interesting one shuttle weave, with many variations. Can be used for upholstery, place-mats, drapes if woven in other materials, book covers, and numerous other uses.

WARP:

The warp used is a 20/3 black mercerized cotton. It was deliberately used because the 3 ply has a tighter twist and would make more durable upholstery.

Also, in the warp are the colored threads which are a 10/3 tightly twisted cotton in 6 different colors.

WEFT:

The weft on the sample here is the 16/2 black ramie imported from Switzerland. It is sun fast and wash fast, and combined with the cotton should make excellent upholstery.

REED USED:

A 15 dent reed is used and the 20/3 black is double-sleyed, 2 ends per dent, and also when you come to the colored pattern thread, there are 2 threads of black 20/3 and one thread of colored 10/3 in each dent. There are 10 threads of 20/3 black double sleyed for 5 dents, and then in the next 10 dents there are 3 threads each, 2 of the 20/3 and one of the 10/3, and then back to the 10 threads of 20/3, 2 per dent in the next 5 dents. Repeated over & over.

Sample

Sample on next page

TWO WARP BEAMS USED:

On this particular technique, I feel it is better if you have 2 warp beams, one for the 20/3 black, and one for the 10/3 in the 6 colors. However, if you do not have 2 warp beams, and if you keep the 10/3 cotton in colors separated from the 20/3 and put in a lease stick to separate them, you can eliminate the need for the 2nd warp beam by putting a weight on each end of the lease stick to keep the tension tight on the 10/3 cotton. The reason for this is that as you weave, the 10/3 cotton will float on the back of your fabric a good part of the time, and as a result, you cannot tighten



TREADLING ON TIE-UP DRAFT:

Here is the treadling sequence I used. However, please note that some looms do not have 14 treadles, so I am going to give another tie-up draft called a "skeleton tie-up" and also I will give the skeleton treadling. This is the treadling to use if you have 14 treadles.

TREADLING:

Here is the treadling sequence I used. However, please note that some looms do not have 14 treadles, so I am going to give a skeleton tie-up and treadling for those 8 harness looms having only 10 treadles. This is the treadling for the looms having 14 treadles.

Treadle 1,2,3,4,5,6,3,4,1,2,7,8,7,8,7,8,7,8,9,10,11,12,13,14.

Treadle 1,2,3,4,5,6,3,4,1,2,9,10,11,12,13,14,11,12,9,10,1,2,3,4,5,6,3,4,1,2,7,8,7,8,7,8,7,8,7,8. End of 1st pattern.

On the second pattern treadle as follows, to alternate the pattern as we did.

9,10,11,12,13,14,11,12,9,10,1,2,3,4,5,6,3,4,1,2,9,10,11,12,13,14,11,12,9,10,7,8,7,8,7,8,7,8,7,8, and then go back to the treadling for the first unit.

SKELETON TIE-UP:

8								X		X	
7							X		X		
6					X					X	
5				X					X		
4			X							X	
3		X							X		
2	X									X	
1	X								X		
	1	2	3	4	5	6	7	8	9	10	

SKELETON TREADLING: On this skeleton treadling, you have to step on 2 treadles at a time for the pattern and one treadle at a time for the tabby.

To weave the pattern in the sample, Treadle:

1 & 8--1 time
 2 & 8--1 time
 1 & 7--1 time
 2 & 7--1 time
 1 & 6--1 time
 2 & 6--1 time
 1 & 7--1 time
 2 & 7--1 time
 1 & 8--1 time
 2 & 8--1 time
 1 & 3--1 time
 2 & 3--1 time
 1 & 4--1 time
 2 & 4--1 time
 1 & 5--1 time
 2 & 5--1 time
 1 & 4--1 time
 2 & 4--1 time
 1 & 3--1 time
 2 & 3--1 time
 1 & 8--1 time
 2 & 8--1 time
 1 & 7--1 time
 2 & 7--1 time
 1 & 6--1 time
 2 & 6--1 time
 1 & 7--1 time
 2 & 7--1 time
 1 & 8--1 time
 2 & 8--1 time

1 & 3--1 time
 2 & 3--1 time
 1 & 4--1 time
 2 & 4--1 time
 1 & 5--1 time
 2 & 5--1 time
 1 & 4--1 time
 2 & 4--1 time
 1 & 3--1 time
 2 & 3--1 time
 1 & 8--1 time
 2 & 8--1 time
 1 & 7--1 time
 2 & 7--1 time
 1 & 6--1 time
 2 & 6--1 time
 1 & 7--1 time
 2 & 7--1 time
 1 & 8--1 time
 2 & 8--1 time
 1 & 3--1 time
 2 & 3--1 time
 1 & 4--1 time
 2 & 4--1 time
 1 & 5--1 time
 2 & 5--1 time
 1 & 4--1 time
 2 & 4--1 time
 1 & 3--1 time
 2 & 3--1 time

Then alternate treadles 1 & 2 for 10 threads. Then to top of next column.

Then alternate treadles 1 & 2 for 10 threads. This is the end of one complete pattern. Start over.

MORE ABOUT THIS FABRIC:

You can see from the treadling for both of these tie-ups, that it is much faster and easier weaving if you do have 14 treadles to use. However, since many do not, you can adapt your loom to the pattern and then weave accordingly.

Incidentally, I have worked out on this about 8 other very exciting treadlings, and cannot give them all here as it would take too much room. However, you should experiment on this set-up quite a bit, as there are some very interesting effects that you can do.

Also in the weft, I used a dark brown with much luck, a dark blue, a dark green, a wine color, and several others. These colors if you use them dominate, and you do not see the pattern as an entirely black fabric with colored pattern. I found that you could use perle 3 or perle 5 cotton, 10/3 cotton, and many others in the weft on this fabric. Also, I think that 20/2 linen would be just as satisfactory as the 16/2 ramie if you have any on hand. I think even carpet warp would be satisfactory on this warp.

Russell E. Groff, Editor