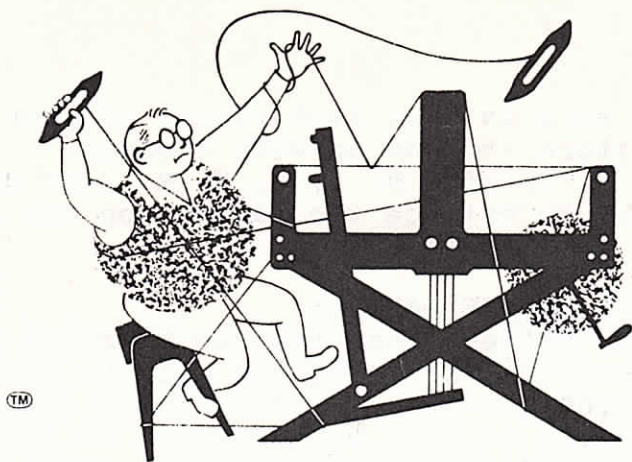


drafts and designs



a guide for 5 to 12 harness weaves

VOLUME 30, No. 2, October, 1987

STAGGERED CROSSES: A Huck lace variation where the pattern is created by both warp and weft floats to create the cross.

WARP THREADS USED:

Our warp thread is a 10/2 bleached, dry-spun scottish linen. It has 1500 yards per lb., comes on about 1 lb. tubes.

WEFT THREADS USED:

Our weft thread was also the bleached 10/2, dry-spun, Scottish linen.

REED USED:

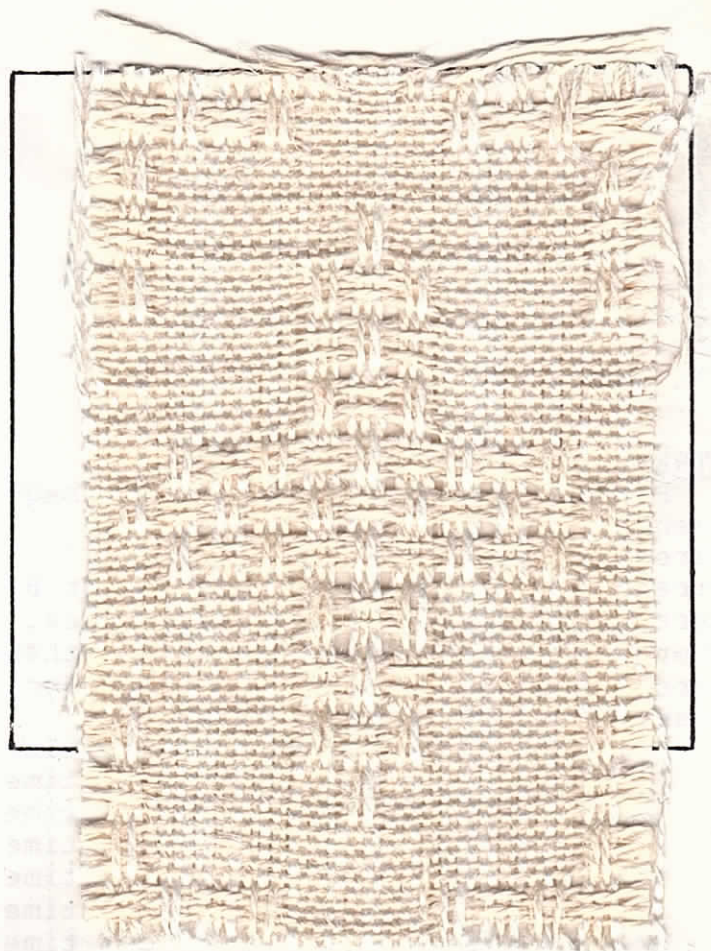
A 10 dent reed was used, and it was double-sleyed, 2 ends per dent, or 20 threads per inch.

COST OF THE THREADS USED:

We have a new stock of this dry spun 10/2, both natural and bleached linen, on order from Scotland. The price will be \$12.00 per lb., and both will come on about one pound tubes.

THREADING DRAFT:

8				X X			X X					
7							X X					
6				X X						X X		
5			X X		X X			X X		X X		X X
4	X X		X X									
3		X X										
2	X X X	X X X	X X X	X X X	X X X	X X X	X X X	X X X	X X X	X X X	X X X	X X X
1		X X X	X X X	X X X	X X X	X X X	X X X	X X X	X X X	X X X	X X X	X X X
	B	A	B	C	D	C	F	E	F	C	D	C



DRAFTS AND DESIGNS:

Published monthly (except July and August) by Robin & Russ Handweavers, 533 No. Adams St., McMinnville, Ore. 97128

SUBSCRIPTIONS: \$10.00 per year. The Canadian subscriptions are \$12.00 per year, and foreign are \$13.00 per year. Back issues or single copies are \$1.25 each, plus 22¢ per copy postage. All subscriptions start with the September issue. If you subscribe after September, back issues from September on will be sent to you.

VOLUME 30, No. 2, October, 1987

TIE-UP DRAFT:

8				0					0	0	0	0
7		0	0	0		0						0
6			0	0	0	0				0	0	
5	0	0					0	0				0
4			0			0	0					0
3	0			0	0				0			0
2					0	0	0	0				0
1	0	0	0	0	0							0
	1	2	3	4	5	6	7	8	9	10	11	

TREADLING SEQUENCE:

Please note that the treadling sequence uses 11 different treadles. Treadles 1 through 9 are pattern treadles, and # 10 or A, and 11 or B, are the plain weave, tabby treadles. Here is the sequence. Note that there are 5 shots in each unit on this huck variation treadling.

1. Treadle B, 2, B, 2, B, one time
2. Treadle A, 9, A, 9, A, one time
3. Treadle B, 3, B, 3, B, one time
4. Treadle A, 8, A, 8, A, one time
5. Treadle B, 4, B, 4, B, one time
6. Treadle A, 7, A, 7, A, one time
7. Treadle B, 5, B, 5, B, one time
8. Treadle A, 6, A, 6, A, one time
9. Treadle B, 1, B, 1, B, one time
10. Treadle A, 6, A, 6, A, one time
11. Treadle B, 5, B, 5, B, one time
12. Treadle A, 7, A, 7, A, one time
13. Treadle B, 4, B, 4, B, one time
14. Treadle A, 8, A, 8, A, one time
15. Treadle B, 3, B, 3, B, one time
16. Treadle A, 9, A, 9, A, one time

Be sure on your last repeat of your pattern, to end up with treadle

Treadle B, 2, B, 2, B, just one time to balance the pattern on the end of your weaving.

COST OF THE FABRIC:

We believe that the new bleached white linen that is coming in will be about \$12.00 per lb. Figuring it on this figure, we find that it took 12 lbs. to weave 24 yards of fabric. And as our warp was 25 yards long, we found it took 13-1/3 lbs. in the warp. This made our warp cost \$6.40 per yard, and our weft cost \$6.00 per yard.

WARP COST, 40" Wide-----	\$ 6.40
WEFT COST, 38" wide-----	6.00
=====	
Fabric cost, per yard----	\$12.40

MORE ABOUT THE FABRIC:

First of all, as both our warp and weft were all linen, you should remember that you do use a firm, even, double beat when weaving with most linens. There is always a slight problem with linen and in the weaving.

First of all, there is much less tension on almost all other threads, and with linens you have to keep the tension slightly tighter when weaving. You cut down on the shed opening, when you have a tighter warp, and on a jack-type loom, you have to be particularly careful not to have your tension 2 tight.

If this is the case you have less opening of the warp, a narrower shed, and thus, perhaps a little more trouble in the weaving

Yes, we did use a firm, even, double beat on this fabric. It is important to be as consistant as possible in the weaving. Practice on your speed on a fabric like this one. As you are using just one shuttle, and as your treadling is a fairly simple one, this is a good time to try to speed-up, to work on better edges, and do other similiar things. I use a metronome, set it at a slow constant speed, and weave to the beat. Then increase the speed, and continue weaving to the beat. Do this for an hour, and you will find that you increase your production drastically.

DRAFTS AND DESIGNS:

Published monthly (except July and August) by Robin & Russ Handweavers, 533 No. Adams St., McMinnville, Ore., 97128.

SUBSCRIPTIONS: \$10.00 per year. The Canadian subscriptions are \$12.00 per year, and foreign are \$13.00 per year. Back issues or single copies are \$1.25 each, plus 22¢ per copy postage. All subscriptions start with the September issue. If you subscribe after September, back issues from September on will be sent to you.

VOLUME 30, No. 3. November, 1987.

TIE-UP DRAFT:

8	0	0	0	0	0	0	0	
7	0	0	0	0	0	0	0	
6	0	0	0	0	0	0	0	
5	0	0	0	0	0	0	0	
4	0	0	0	0	0	0	0	
3	0	0	0	0	0	0	0	
2	0	0	0	0	0	0	0	
1	0	0	0	0	0	0	0	
	1	2	3	4	5	6	7	8

TREADLING SEQUENCE:

There are 38 shots in one complete treadling sequence. You have one shot of each treadle as I give it here. I have divided it for convenience.

Treadle: 8,7,6,5,4,3,2,1,
2,3,4,3,2,1,
2,3,4,3,2,1,
2,3,4,5,6,7,8,
7,6,5,6,7,8,
7,6,5,6,7.

End of one complete pattern. Do repeat over and over as desired.

MORE ABOUT THE THREADS USED: The 2/17's spun silk warp in the natural color has 4,760 yards per lb., and it came to us on about 1-1/2 lb. cones. It has formerly sold for about \$60.00 per lb., but we were able to purchase 150 lbs. at 1/2 price, so we are able to sell it at \$32.00 per lb.

The 6/60 W.C., spun tussah silk is \$36.00 per lb. It was a 2/60's that we purchased in England and we had it 3 plied, and steamed to set the ply, and so it became a 6/60. It is supposed to have 5600 yards per lb. This came on 2 to 3 lb. cones, but if you do not need this much, we can wind off for you either 1/2 lb. or 1 lb. tubes.

We have just recently ordered a new lot of this in England and we have some

on hand, but will have more stock in January I would think.

When the 2/17's W.C. spun silk is sold out there will be no more. I did purchase the entire balance of this when in England 2 years ago. That is why I was able to obtain this at 1/2 price.

COST OF THE FABRIC:

We had a 10 yard warp, 40" wide on the loom, and from this fabric, we did receive about 9-1/4 yds. of finished fabric. It took 2 lbs. 1/2 oz. of the 2/17 spun silk for warp. So, our total warp cost came to \$65.00, or \$6.50 per yard.

In the weft, we found that it took 3.7 oz. of the 6/60 spun tussah silk to weave one yard. In 9-1/4 yards it took 34-1/4 oz. of silk for weft. This comes to 1 lb. 14-1/4 oz. at \$36.00 per lb., Total weft cost was \$68.07 or the cost per yard was \$7.37

WARP COST PER YARD, 40" wide - \$6.50

WEFT COST PER YARD, 38" wide - 7.37

=====

FABRIC COST PER YARD, 38" wide 13.87.

MORE ABOUT THIS FABRIC:

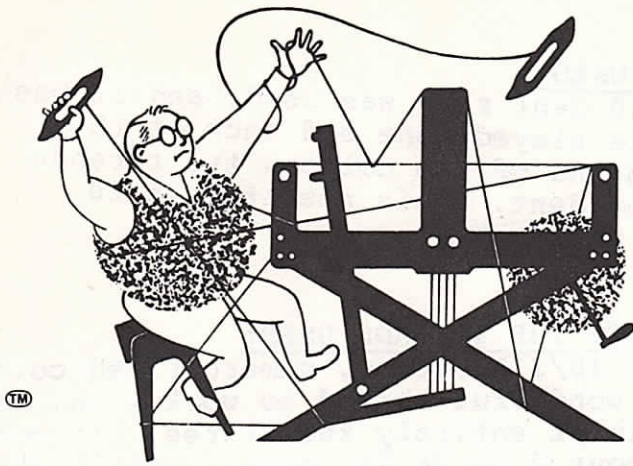
It is important that you use a firm, even, double beat on this fabric, beating after you throw the shuttle and change the shed and beat again.

This is quite a long treadle sequence. You must keep track of where you are at all times. If you stop, be sure that you have your treadle sequence written out so you can stick a straight pin in on the treadle number you end with.

Otherwise, you might have to take out weft threads, to make sure where you are in the treadling. If you tend to think of other things while you are weaving this one, you will have a hard time keeping track of the pattern.

The silk is quite strong. You should have no trouble with broken threads in the weaving. I had 2 broken selvage threads in the pattern. On this fabric, it is harder to unweave than it is to weave.

I would suggest a selvage of say 8 threads of 10/3 cotton on each edge. This should help considerably.



drafts and designs

a guide for 5 to 12 harness weaves

VOLUME 30, No. 5, January, 1988

A SHADOW-WEAVE, REVISED EDITION:

I thought we might come up with some interesting variations if I experimented with a shadow weave, and I was delighted with the results that you see here.

WARP:

We have two different threads in the warp in this project. One is the 10/3 bleached white unmercerized cotton, which was made especially for us. It is a most outstanding warp or weft thread. It is 3 ply, tends to be rounder than most threads.

Also, the other warp thread is the poppy, size perle 3, in a poppy color. This is a 5 ply thread, same size as a perle 3 cotton. A most exciting warp thread, it is called a "PERLE" rayon.

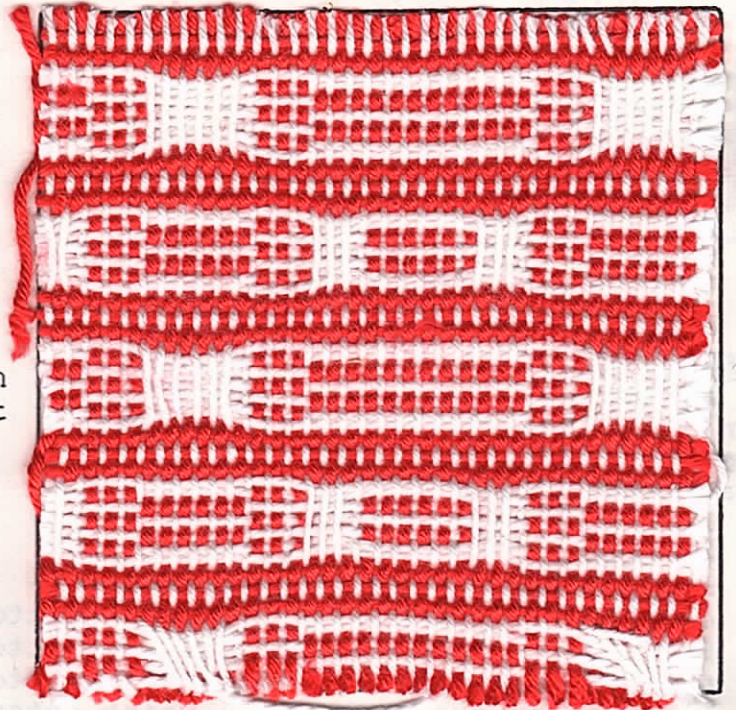
WEFT:

In the weft, we have two threads.. One is the same perle 3 POPPY spun rayon which we had in the warp.

The white weft thread is the perle 3 cotton, white, mercerized which we do try to stock all the time.

THREADING DRAFT:

8		O O O O O O	
7		X X X X X X	
6	O O O		O O O
5	X X X		X X X
4			O O O O O O
3			X X X X X X
2		O O O	O O O
1		X X X	X X X



KEY TO THREADS IN THE WARP:

- O -- perle 3 rayon, POPPY
- X -- 10/3 bleached white unmercerized cotton.

DRAFTS AND DESIGNS:

Published monthly (except July and August) by Robin & Russ Handweavers, 533 No. Adams St., McMinnville, Ore., 97128.

SUBSCRIPTIONS: \$10.00 per year. The Canadian subscriptions are \$12.00 per year, and foreign are \$13.00 per year. Back issues or single copies are \$1.25 each, plus 22¢ per copy postage. All subscriptions start with the September issue. If you subscribe after September, back issues from September on will be sent to you.

VOLUME 30, No. 5. January, 1988

TIE-UP DRAFT:

8		0	0			0
7	0			0	0	0
6		0			0	0
5	0		0	0		0
4			0	0		0
3	0	0			0	0
2	0			0		0
1		0	0		0	0

1 2 3 4 5 6 7

TREADLING SEQUENCE:

Please note that there are 20 shots in each pattern repeat. I will give you this treadling sequence, numerically, from 1 to 20.

1. Treadle # 6 -- poppy rayon
2. Treadle # 7 -- poppy rayon
3. Treadle # 6 -- poppy rayon
4. Treadle # 7 -- perle 3 white cotton
5. Treadle # 1 -- perle 3 white cotton
6. Treadle # 2 -- perle 3 white cotton
7. Treadle # 1 -- perle 3 white cotton
8. Treadle # 2 -- perle 3 white cotton
9. Treadle # 1 -- perle 3 white cotton
10. Treadle # 7 -- perle 3 white cotton
11. Treadle # 6 -- poppy rayon
12. Treadle # 7 -- poppy rayon
13. Treadle # 6 -- poppy rayon
14. Treadle # 7 -- perle 3 white cotton
15. Treadle # 1 -- perle 3 white cotton
16. Treadle # 3 -- perle 3 white cotton
17. Treadle # 1 -- perle 3 white cotton
18. Treadle # 3 -- perle 3 white cotton
19. Treadle # 1 -- perle 3 white cotton
20. Treadle # 7 -- perle 3 white cotton

END OF ONE COMPLETE PATTERN REPEAT. Do repeat over and over as desired.

REED USED:

A 10 dent reed was used, and it was double sleyed, one end each of the rayon and of the cotton, two threads in one dent. This resulted in 20 ends per inch.

COST OF THE THREADS USED:

The 10/3 bleached, unmercerized cotton is a wonderful thread to work with. It is almost entirely knot three. It comes on about 2 to 2½ lb. cones, mostly the larger, it is \$8.00 per lb., and it has 2800 yards per lb.

The perle 3 poppy rayon is a close-out we have. It too is a most beautiful warp, and in my estimation is the closest rayon to a silk that one can find. It has 1260 yards per lb. and it is \$9.60 per lb.

The Perle 3 white cotton used in the weft has 1260 yards per lb., comes on about 1 lb. cones and it is \$16.00 per lb.

MORE ABOUT THE FABRIC:

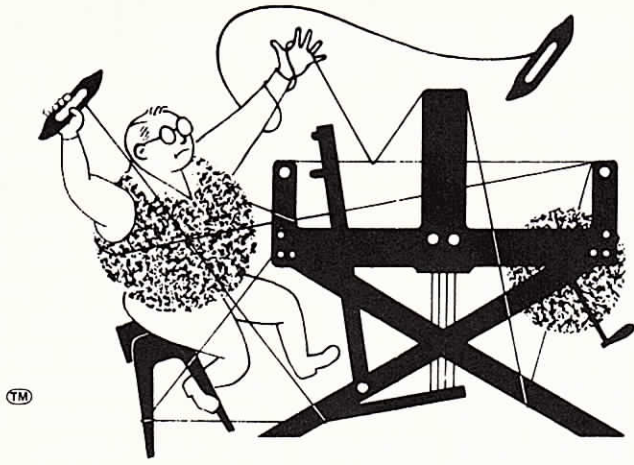
I was delighted to see how much different our sample looked than the regular shadow weave. I have been experimenting more and more with a different tie-up, sometimes 2 or 3 tie-ups on a single shadow-weave set-up.

This pattern is a shadow weave, but with a new tie-up. We have worked out 3 other samples from this same set-up that are quite different, and we will be sharing these with you in the coming months.

Also, please note that while this is an 8 harness weave, we used only 7 treadles in this treadling. And actually, we used only 5 of the 7 treadles in this tie-up, and I was quite delighted with the results.

This was quite easy to weave, and we had no broken threads, and no hassles in the weaving.

drafts and designs



a guide for 5 to 12 harness weaves

VOLUME 30, No. 6, February, 1988:

POPPY AND WHITE, A WEAVER'S DELIGHT

I did this type of a weave about 15 years ago in a fine wool, and wanted to see what it would be like out of much heavier threads. Here it is. A most interesting 8 harness weave that all of you will enjoy.

WARP:

We have two threads in the warp. One is the perle 3 POPPY, spun rayon, and the other is a perle 3 cotton in Bleached white. Both has 1260 yards pkr pound.

WEFT:

The same two threads that were used in the warp, were also used in the weft. Perle 3 white cotton, and also the perle 3 poppy red rayon.

REED USED:

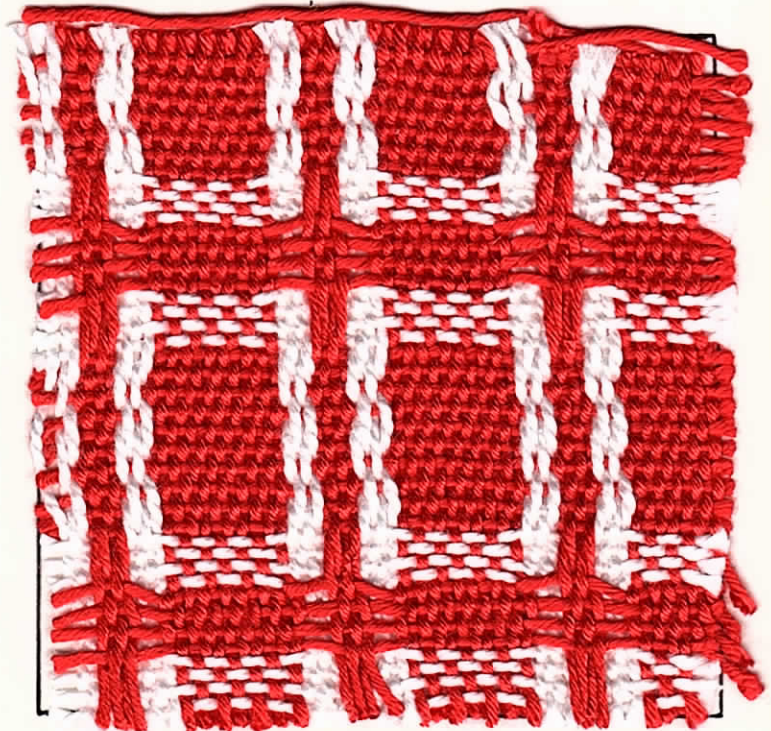
Our reed was a 10 dent reed, and it was double sleyed, 2 ends per dent, or 20 threads per inch.

THREADING DRAFT:

8		X		X		X		X
7		X		X		X		X
6				X		X		X
5				X		X		X
4	O	O				O	O	
3	O	O				O	O	
2			X	X				
1			X	X				

KEY TO COLORS IN THE WARP:

- O - 3/2 White Mercerized Perle Cotton
- X - 3/2 Perle Rayon, Poppy color.



DRAFTS AND DESIGNS:

Published monthly (except July and august) by Robin & Russ Handweavers, 533 No. Adams St., McMinnville, Ore., 97128

SUBSCRIPTIONS: \$10.00 per year. The Canadian subscriptions are \$12.00 per year, and foreignare \$13.00 per year. Back issues or single copies are \$1.25 each, plus 22¢ per copy postage. All subscriptions start with the September issue. If you subscribe after September, back issues from September on will be sent to you.

VOLUME 30, No. 6, February, 1988:

TIE-UP DRAFT:

8		0		0		0		0
7	0		0					0
6		0		0				0
5	0		0		0			0
4		0	0	0		0		
3	0		0	0	0			
2		0		0	0	0		0
1	0		0		0	0	0	
	1	2	3	4	5	6	7	8

TREADLING SEQUENCE:

Please note that there are 22 weft shots in every pattern repeat. Do repeat over and over as desired.

1. Treadle # 5 -- perle 3 white
2. Treadle # 6 -- perle 3 white
3. Treadle # 5 -- perle 3 white
4. Treadle # 6 -- perle 3 white
5. Treadle # 3 -- perle 3 poppy
6. Treadle # 4 -- perle 3 poppy
7. Treadle # 1 -- perle 3 poppy
8. Treadle # 2 -- perle 3 poppy
9. Treadle # 3 -- perle 3 poppy
10. Treadle # 4 -- perle 3 poppy
11. Treadle # 1 -- perle 3 poppy
12. Treadle # 2 -- perle 3 poppy
13. Treadle # 3 -- perle 3 poppy
14. Treadle # 4 -- perle 3 poppy
15. Treadle # 5 -- perle 3 white
16. Treadle # 6 -- perle 3 white
17. Treadle # 5 -- perle 3 white
18. Treadle # 6 -- perle 3 white
19. Treadle # 7 -- perle 3 poppy
20. Treadle # 8 -- perle 3 poppy
21. Treadle # 7 -- perle 3 poppy
22. Treadle # 8 -- perle 3 poppy

This is the end of one complete pattern repeat. Do repeat over and over, and vary it as you wish to make rectangles or squares.

COST OF THE THREADS USED:

The Poppy, perle 3 rayon is an odd lot and it has 1260 yards per lb., comes on about 1 lb. cones, and we have a special price of \$9.60 per lb.

The perle 3 bleached white cotton is a regular stock item, and it too has 1260 yards per lb., and it came on varying sized cones of about 1 lb. to 1 lb. 4 oz. each. The regular price of our perle 3 cottons is \$16.00 per lb. We try to stock the white and natural all the time, and we special order the colors for you.

MORE ABOUT THE FABRIC:

This fabric was quite easy to weave and we had no broken threads in our ten (10) yard warp. On the loom, it was set 42" wide. Under tension and on the loom, it wove to a 40" width, and then when we took it off the loom, it came together more until it was just 39" wide.

Also, on the loom, we measured it under tension, and it was 8 yards and 30" long. Taking it off the loom, and relaxing the tension, it only measured 8 yards and one half. In other words it lost 12" from being under tension to relaxing off the loom.

COST OF THE FABRIC:

In the warp, we had a 10 yard warp, 42" wide.

It took 2 lbs. one ounce of the perle 3 white cotton at \$16.00 per pound, so this cost was \$33.00. Also in the warp, we used 4.9 lbs. of the poppy red perle rayon at \$9.60 per lb. The cost of this one came to \$47.04 in all. So adding the two together, we come up with a total warp cost of \$80.04 and thus the cost per yard comes to \$8.00 per yard.

In the weft, we used 2 lbs. 2-1/2 ounces of white perle 3. This is \$16.00 per lb., so the price is \$34.50. Also in the weft, we used 2 lbs. 6 oz. of the poppy perle 3 rayon at \$9.60 per lb. So, this cost is \$22.20. So adding these 2 together we come up with a total weft cost of \$56.70. Off the loom, we had 8-1/2 yards of fabric. So, we find the weft cost per yard comes to \$6.67 per yard.

WARP COST PER YARD----- \$8.00
WEFT COST PER YARD----- 6.67
=====

FABRIC COST PER YARD-- \$14.67

DRAFTS AND DESIGNS:

Published monthly except July and August, by Robin & Russ Handweavers, 533 No. Adams St., McMinnville, Ore., 97128.

SUBSCRIPTIONS: \$ 10.00 per year. The Canadian Subscriptions are \$12.00 per year, and foreign subscptions are \$13.00 per year. Back issues or single copies are \$1.25 each, plus 25¢ per copy, postage. All subscriptions start with the September issue. If you subscribe after September, back issues from September on will be sent to you.

VOLUME 30, NUMBER 7, March, 1988

TREADLING SEQUENCE:

Please note that there are 22 weft shots in every pattern repeat. Do repeat over and over as desired

1. Treadle # 5 Perle 3 white.
2. Treadle # 5 Perle 3 white
3. Treadle # 5 Perle 3 white
4. Treadle # 6 Perle 3 white
5. Treadle # 3 Perle 3 Poppy Red
6. Treadle # 4 Perle 3 Poppy Red
7. Treadle # 1 Perle 3 Poppy Red
8. Treadle # 2 Perle 3 Poppy Red
9. Treadle # 3 Perle 3 Poppy Red
10. Treadle # 4 Perle 3 Poppy Red
11. Treadle # 1 Perle 3 Poppy Red
12. Treadle # 2 Perle 3 Poppy Red
13. Treadle # 3 Perle 3 Poppy Red
14. Treadle # 4 Perle 3 Poppy Red
15. Treadl3 # 5 Perle 3 White
16. Treadle # 6 Perle 3 White
17. Treadle # 5 Perle 3 white
18. Treadle # 6 Perle 3 white
19. Treadle # 7 Perle 3 Poppy Red
20. Treadle # 8 Perle 3 Poppy Red
21. Treadle # 7 Perle 3 Poppy Red
22. Treadle # 8 Perle 3 Poppy Red

End of one complete pattern repeat. Do repeat over & over as desired.

Also, may I recommend experimenting with the treadling and seeing if you do come up with any other variations that you like. You should be able to find one or two without the extremely long weft float as we have in this sample.

COST OF THE THREADS USED:

The Poppy Red, perle 3 rayon is an odd lot and it has 1260 yards per lb. We purchased about 100 lbs. of it. It came on cones of about 1 lb. to 1 lb. 4 oz. each. Price while it lasts is \$9.60 per lb.

Our 10/3 bleached white, unmercerized cotton came on about 2-1/2 lb. cones. It is \$8.00 per lb. It is a wonderful thread, without any knots in most of it. It has approximately 2800 yards per lb., and it is also available in natural at \$6.80 per lb.

The Perle 3 white, mercerized cotton comes on about 1 lb. cones, and it has 1260 yards per lb. It came really on slightly varying sized cones of from 14 ounces to 1 lb. 6 or 1 lb. 8 oz. each. Excellent warp or weft. Also, it isavailable in quite a few colors, about 112 colors in all. We do not stock the colors but because of the price, we special order them for our customers. On special orders of this type, the customer must take a full cone.

COST OF THE FABRIC:

In our warp, we used 1 lb. 7 oz. of the 10/3 white unmercerized cotton. At \$8.00 per lb. this came to \$11.50.

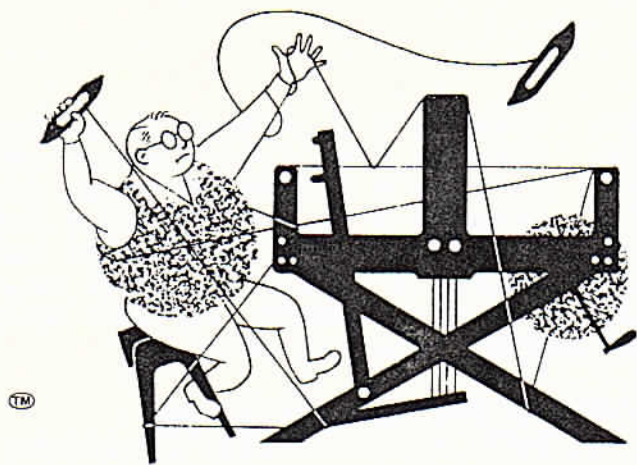
In the perle 3 Poppy Red rayon, we used 3 lbs. 3 oz. in the warp. It is \$9.60 per lb. So the cost of 3 lbs. 3 oz. comes to \$30.60. Thus, our total warp cost came to \$42.10, and so the warp cost per yard was \$4.21.

In the weft, we used approximately 1-3/4 lbs. of perle 3 white cotton at \$16.00 per lb. or \$28.00.

Also, in the weft, we used 3-1/2 lbs. of the perle 3 POPPY RED rayon at \$9.60 per lb., so 3 lbs. 8 oz. of Poppy Red rayon comes to \$33.60. Our total weft cost for 9 yards of fabric comes to \$61.60, so the cost per yard is \$6.85 per yard.

Warp cost per yard, 40" wide	\$4.21
Weft cost per yard, 38½ wide	6.80
=====	
Fabric cost per yard-----	\$11.01

Use a firm, even, double beat on this fabric, and actually the tighter the beat, the better you will like it.



drafts and designs

a guide for 5 to 12 harness weaves

VOLUME 30, Number 8, April, 1988

TAUPE, TAN, AND BROWN AND DON'T FORGET THE GREEN:

i was delighted with the results of my sampling with some of our wool tweeds, and this 8 harness weave gives very interesting effects.

WARP:

We used 4 different tweed threads in the warp. Two of these wool tweeds are from France, and the other two are products of the U.S.A.

- O - 2 ply taupe, wool tweed.
- X - Green, french single ply tweed
- A - Dark Brown USA wool tweed.
- B - Light Beige, French, tweed.

WEFT:

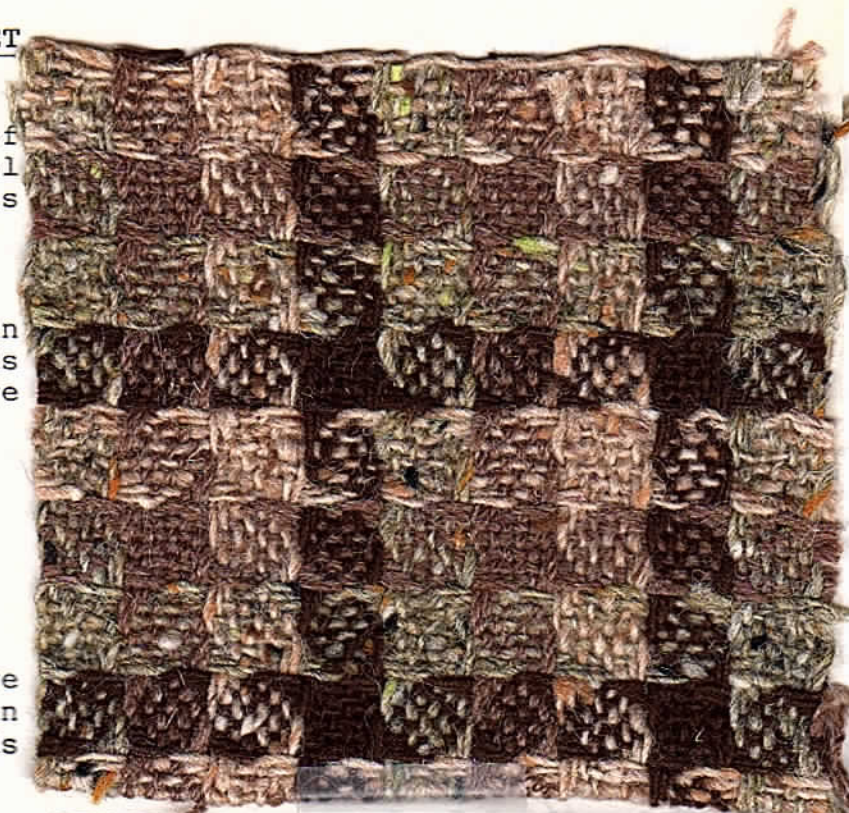
The same 4 tweed yarns that were used in the warp, were also used in the weft. Three are single ply tweeds and one is a 2 ply tweed.

REED USED:

We used an 8 dent reed, and it was double sleyed, 2 ends per dent, or 16 threads per inch.

THREADING DRAFT:

8	B	A	X	O
7	B	A	X	O
6	B	A	X	O
5	B	A	X	O
4	B	A	X	O
3	B	A	X	O
2	B	A	X	O
1	B	A	X	O



KEY TO COLORS IN THE THREADING DRAFT:

- O - 2 ply taupe, USA wool tweed
- X - Green, French single ply tweed
- A - Dark brown, USA wool tweed
- B - Lt. Beige, French wool tweed

TIE-UP DRAFT:

8							
7							
6							
5							
4							
3							
2							
1							

1 2 3 4 5 6 7 8

DRAFTS AND DESIGNS:

Published monthly except July and August, by Robin & Russ Handweavers, 533 No. Adams St., McMinnville, Ore., 97128.

SUBSCRIPTIONS: \$10.00 per year. The Canadian Subscriptions are \$12.00 per year, and foreign subscriptions are \$13.00 per year. Back issues or single copies are \$1.25 each, plus 25¢;

per copy postage. All subscriptions start with the September issue. If you subscribe after September, back issues from September on will be sent to you.

VOLUME 30, Number 8, April, 1988

TREADLING SEQUENCE:

Please note that there are 32 shots in each complete pattern repeat. It is a very simple treadling, as you do treadle 1 to 8 four different times, and each time you use a different weft thread for each group of 8 shots.

1. Treadle 1 - 2 ply light beige
2. Treadle # 2, 2 ply light beige
3. Treadle # 3, 2 ply light beige
4. Treadle # 4, 2 ply light beige
5. Treadle # 5, 2 ply light beige
6. Treadle # 6, 2 ply light beige
7. Treadle # 7, 2 ply light beige
8. Treadle # 8, 2 ply light beige
9. Treadle # 1, french green tweed
10. Treadle # 2, french green tweed
11. Treadle # 3, french green tweed.
12. Treadle # 4, french green tweed.
13. Treadle # 5, french green tweed
14. Treadle # 6, French green tweed
15. Treadle # 7, french green tweed
16. Treadle # 8, french green tweed.
17. Treadle # 1, USA brown tweed
18. Treadle # 2, USA brown tweed
19. Treadle # 3, USA brown tweed.
20. Treadle # 4, USA brown tweed
21. Treadle # 5, USA brown tweed
22. Treadle # 6, USA brown tweed
23. Treadle # 7, USA brown tweed.
24. Treadle # 8, USA brown tweed.
25. Treadle # 1, french beige tweed
26. Treadle # 2, french beige tweed

27. Treadle # 3, french beige tweed
 28. Treadle # 4, french beige tweed
 29. Treadle # 5, french beige tweed
 30. Treadle # 6, french beige tweed
 31. Treadle # 7, french beige tweed
 32. Treadle # 8, french beige tweed
- END OF ONE COMPLETE PATTERN REPEAT.
DO REPEAT OVER AND OVER.

COST OF THE THREADS USED:

We have approximately 30 colors in the wool tweeds, some from Ireland, some from England, Some from Scotland and a few colors from France.

All the single ply tweeds, and this one two ply tweed --they are all \$8.00 per lb. Most come on about 1 lb. cones, and seem to have about 1400 yards per lb.

COST OF THE FABRIC:

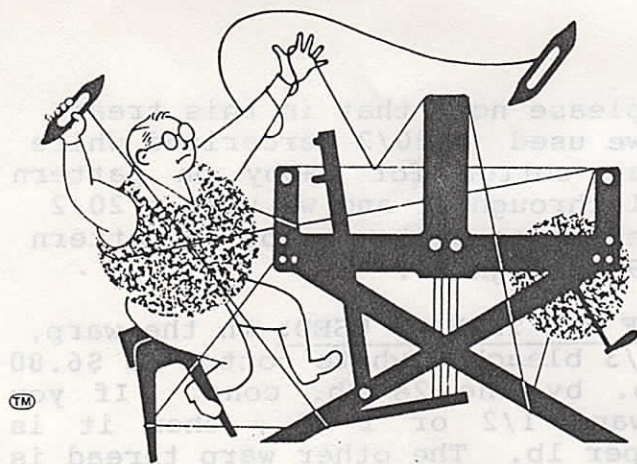
In the warp, we used 2 lbs. 10 oz. of the 2 ply tweed coming to \$21.00. We used 1 lb. 2 oz. of the french green, coming to \$9.00. We used 1 lb. 13 oz. and this came to \$14.50. We also used 1 lb. 7 oz. of the french beige, and it came to \$11.50. Our total warp cost was \$56.00, and we had 9 yds. 10 oz. come off the 10 yard warp. Thus, our total warp cost of \$56.00 and the cost per yard came to \$6.00 per yard.

In the weft, we used 14 oz. of the 2 ply brown, 1 lb. of the french green and 1 lb. 1/2 oz. of the single ply brown, and 1 lb. 1 oz. of the french beige wool tweed. Total weft cost for 9-1/3 yards was \$31.75, or the cost per yard came to \$3.40 per yard.

WARP COST, 40" width, per yd	\$6.00
WEFT COST, AND it was 38½"	3.40
=====	
FABRIC COST PER YARD.	\$ 9.40

MORE ABOUT THE FABRIC:

Note: Using 3 colors of single ply tweed in warp and weft, and we did not have one broken thread. We had 4 threads of 18/3 nylon stitching twine for selvage used on each edge. You want to use a medium light, double beat, beating before you throw the weft thread and again after you throw your weft thread. Do not beat too hard or you will make the fabric a stiff and boardy fabric.



drafts and designs

a guide for 5 to 12 harness weaves

VOLUME 30, Number 9, May, 1988

PEACHES AND CREAM:

Our sample this month was designed for a bed-spread. It is a most interesting fabric, and a striking one for this use.

WARP:

Our sample has 2 different warp threads in it. One of these is the 10/3 bleached white cotton, unmercerized, which is such a nice quality warp. The second thread in the warp is a peach, 5/2 mercerized perle cotton.

WEFT:

In the weft, we used 4 different threads. Two of them are chenille, 8 cut size, with approximately 1,000 yards per lb. And for tabby in our overshot pattern, we used 20/2 egyptian cotton in Peach and in Bleached White. Our chenille was a peach color and also a bleached white.

MORE ABOUT THE FABRIC:

I wanted to be sure to tell you that I felt the warp was sett just a little too open. We should have used a 10 dent reed, 2 ends per dent instead of the 8 dent, 2 ends per dent.

Also, it is important to know that a tabby is used, and that we have two different tabbies. Also, tabby is used throughout this pattern, except between the 4's in the

sample;



THREADING DRAFT:

8	O		X
7	O		X
6	O		X
5	O		X
4	O		X
3	O		X
2	O		X
1	O		X

DRAFTS AND DESIGNS:

Published monthly except July and August, by Robin & Russ Handweavers, 533 No. Adams St., McMinnville, Ore., 97128.

SUBSCRIPTIONS: \$10.00 per year. The Canadian Subscriptions are \$12.00 per year, and foreign subscriptions are \$13.00 per year. Back issues or single copies are \$1.25 each, plus 25¢ postage. All subscriptions start with the September issue. If you subscribe after September, back issues from September on will be sent to you.

VOLUME 30, Number 9, May, 1988:

treadling. Please note that in the treadling we have two places where there are treadle # 4's together, and there is no tabby between these. I will divide the treadling into 2 major parts, and we use a white tabby in one section, and a peach tabby in the other section.

TREADLING SEQUENCE:

Please note that there are 16 pattern shots in each complete pattern repeat, and only 14 tabby shots. I will mark where to use the tabby.

1. Treadle # 4 - white - use tabby
2. Treadle # 3 - white - use tabby
3. Treadle # 2 - white - use tabby
4. Treadle # 1 - white - use tabby
5. Treadle # 1 - white - use tabby
6. Treadle # 2 - white - use tabby
7. Treadle # 3 - white - use tabby
8. Treadle # 4 - white - NO TABBY
9. Treadle # 4 - peach - use tabby
10. Treadle # 3 - peach - use tabby
11. Treadle # 2 - peach - use tabby
12. Treadle # 1 - peach - use tabby
13. Treadle # 1 - peach - use tabby
14. Treadle # 2 - peach - use tabby
15. Treadle # 3 - peach - use tabby
16. Treadle # 4 - peach - NO TABBY

End of one complete pattern repeat. Do repeat over and over as desired. You notice that when you change from white to peach, and then from peach to white in the pattern threads, there is no tabby between these 2 shots which are both on # 4 treadle.

Also, please note that in this treadling, we used a 20/2 mercerized white egyptian cotton for tabby on pattern shots 1 through 7, and we used a 20/2 peach egyptian cotton tabby on pattern shots 9 through 15.

COST OF THE THREADS USED: In the warp, our 10/3 bleached white cotton is \$6.80 per lb. by the 2½ lb. cone. If you just want 1/2 or 1 lb., then it is \$8.00 per lb. The other warp thread is one we have on sale at \$8.00 per lb. also, and it is the perle 5 mercerized cotton, color peach.

In the weft, we used 4 threads. Two of them are peach and bleached white rayon chenille, 8 cut, with approximately 960 to 1,000 yards per pound. Both of these are \$8.00 per lb. The 2 tabby threads, the 20/2 peach and the 20/2 white are egyptian cottons with 8400 yards per lb. They are available on 1/2 lb. cones, and they are \$8.00 per 1/2 lb. cone.

TIE-UP DRAFT:

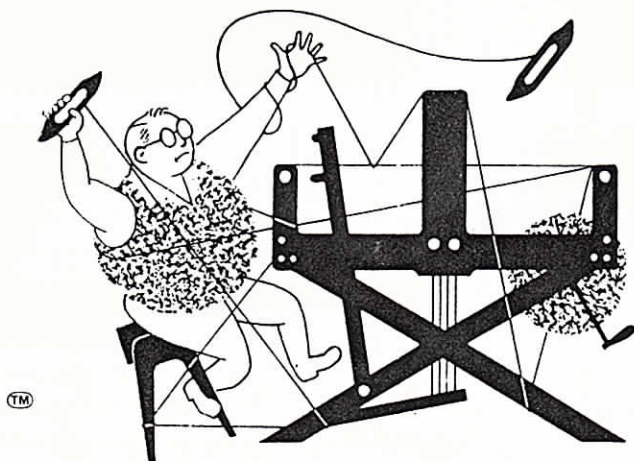
8	0				0	
7	0				0	
6	0	0			0	
5		0	0	0	0	
4		0	0	0	0	
3	0		0		0	
2	0	0			0	
1	0				0	
	1	2	3	4	5	6
				A	B	

COST OF THE FABRIC:

In the weft, we used 1 lb. 4½ oz. of white unmercerized cotton, and 1 lb. 7 oz. of the peach. At \$8.00 per lb., this comes to \$21.75, or the cost per yard for the warp comes to \$2.18.

We had 9 yards of fabric from our 10 yard warp. We used 1 lb. 14 oz. each of peach chenille, and white chenille, at \$8.00 per lb. We used 3 oz. each of the 2, 20/2 cottons in peach and white, at \$1.00 per oz. The total weft cost came to \$36.00, or the cost per yard for the 9 yards of fabric was \$4.00 per yard for the weft thread.

WARP COST, 40" wide, per yard \$2.18
 WEFT COST per yard, 38"wide 4.00
 =====
 FABRIC COST PER YARD -----\$6.18



drafts and designs

a guide for 5 to 12 harness weaves

VOLUME 30, NUMBER 10, June, 1988.

BIRTHSTONE SQUARES:

Our sample this month is a combination of Mercerized 10/2 cottons and 8 cut Rayon Chenille. The colors in our sample reminded us of the colors of some of the different birthstones.

WARP:

We used 5 different threads in the warp. They are as follows:

1. T - 10/2 Turquoise Merc. cotton
2. A - 10/2 Ensign Blue M. cotton
3. P - 10/2 Pearl (dark) blue mercerized cotton.
4. W - 8 cut, Wine rayon chenille
5. 8 cut Purple rayon chenille

WEFT:

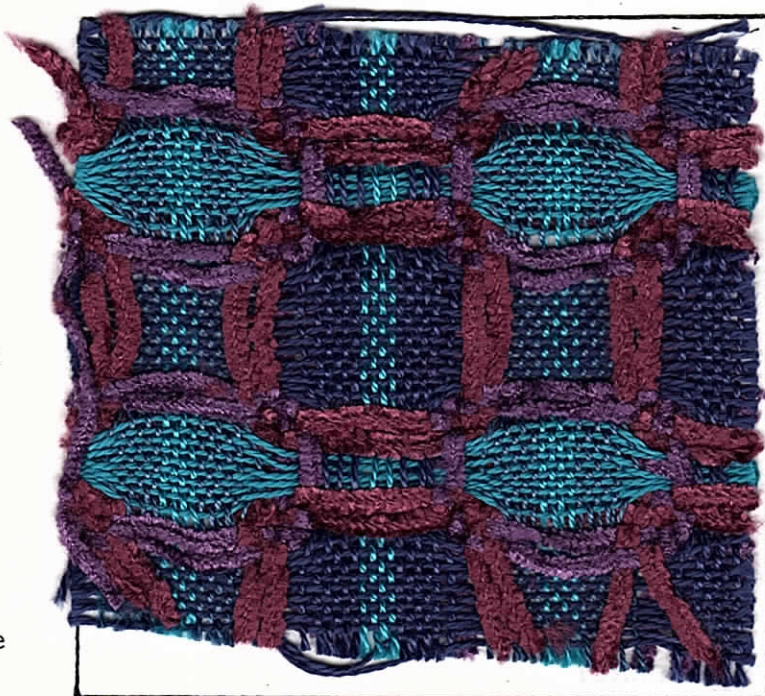
We used 4 of the 5 threads in the warp, in our weft. We did not use the Ensign blue in the weft.

REED USED:

A 10 dent reed was used, and you need to start sleying the reed, with the first dent being one end of purple chenille by itself. Then it is 2 per dent until you come to the last thread of the pattern. Then, the last thread and the first thread of the next pattern are single in the reed, and then it is 2 per dent again until the last thread in one complete pattern. Last & first single, and 2 per dent for the rest of the pattern.

TREADLING SEQUENCE:

Please note that there are 32 shots in one complete pattern repeat.



TREADLING SEQUENCE:

1. Treadle # 8 - Wine Chenille
2. Treadle # 7 - Wine chenille
3. Treadle # 6 - 10/2 Turquoise
4. Treadle # 5 - 10/2 Turquoise
5. Treadle # 6 - 10/2 Turquoise
6. Treadle # 5 - 10/2 Turquoise
7. Treadle # 6 - 10/2 Turquoise
8. Treadle # 5 - 10/2 Turquoise
9. Treadle # 6 - 10/2 Turquoise
10. Treadle # 5 - 10/2 Turquoise
11. Treadle # 6 - 10/2 Turquoise
12. Treadle # 5 - 10/2 Turquoise
13. Treadle # 8 - Wine Chenille
14. Treadle # 7 - Wine Chenille
15. Treadle # 4 - Purple Chenille
16. Treadle # 3 - Purple Chenille.

DRAFTS AND DESIGNS:

Published monthly, except July and August, by Robin & Russ Handweavers, 533 No. Adams St., McMinnville, Ore., 97128.

SUBSCRIPTIONS: \$ 10.00 per year. The Canadian Subscriptions are \$12.00 per year, and foreign subscriptions are \$13.00 per year. Back issues or single copies are \$1.25 each, plus 25¢ postage. All subscriptions start with the September issue. If you subscribe after September, back issues from September on will be sent to you.

volume 30, Number 10, June, 1988.

- 17. Treadle # 2 - 10/2 Pearl Blue
 - 18. Treadle # 1 - 10/2 Pearl Blue
 - 19. Treadle # 2 - 10/2 Pearl Blue
 - 20. Treadle # 1 - 10/2 Pearl Blue
 - 21. Treadle # 2 - 10/2 Pearl Blue
 - 22. Treadle # 1 - 10/2 Pearl Blue
 - 23. Treadle # 2 - 10/2 Pearl Blue
 - 24. Treadle # 1 - 10/2 Pearl Blue
 - 25. Treadle # 2 - 10/2 Pearl Blue
 - 26. Treadle # 1 - 10/2 Pearl Blue
 - 27. Treadle # 2 - 10/2 Pearl Blue
 - 28. Treadle # 1 - 10/2 Pearl Blue
 - 29. Treadle # 2 - 10/2 Pearl Blue
 - 30. Treadle # 1 - 10/2 Pearl Blue
 - 31. Treadle # 4 - Purple chenille
 - 32. Treadle # 3 - 10/2 Pearl Blue
- End of one complete pattern repeat.
Do repeat over and over as desired.

TIE-UP DRAFT:

8	0	0	0	0				
7		0	0	0	0	0		
6			0			0	0	
5				0	0	0		0
4	0				0		0	0
3		0				0	0	0
2	0	0	0					0
1	0	0		0				0
	1	2	3	4	5	6	7	8

THREADING DRAFT:

8	P	P	P	T	T	P	P	P
7	P	P	P	T	T	P	P	P
6	X							X
5	X							X
4						A	A	A
3						A	A	A
2							W	
1								W

KEY TO COLORS IN THE THREADING DRAFT:

- P - 10/2 Cotton, Pearl Blue
- T - 10/2 cotton, Turquoise
- A - 10/2 cotton, Ensign blue.
- W - 8 cut, Wine rayon chenille
- X - 8 cut Purple rayon chenille

MORE ABOUT THE THREADS USED:

We used 5 threads in this project. The 3 smooth threads are 10/2 cotton in Ensign Blue, Turquoise, and are on about 2 lb. cones to 2-1/2 lb. cones. Price is \$6.80 per lb., when purchased by the full cone, and \$8.00 per lb when purchased by 1/2 lb. or 1 lb. tubes.

There are 2 chenilles in this sample. The wine color has 960 yards per lb., and the purple chenille has 1,000 yards per lb. Wine is \$9.60 per lb, and purple is \$8.00 per lb. Both came on about 2-1/2 lb. cones, and may be purchased by the full cone or by the 1/2 lb. tube if necessary.

COST OF THE FABRIC:

In 8 and 1/3 yards, we used the following amounts of the 4 threads.

7-1/2 oz. of Turquoise; 11 1/2 oz. of ensign blue; 14 1/2 oz. of the wine chenille and 14 1/2 oz. of the purple chenille.

The total cost of these comes to \$24.01, and this means that the weft cost per yard came to \$2.89 per yard.

In the warp, we used 8 oz. of the pearl blue; 10 oz. of the ensign blue; 6 1/2 oz. of the 10/2 Turquoise; all these in 10/2 cotton. We also used 1 lb. each of wine chenille, and the purple chenille. Our 5 threads in the warp came to \$26.52 for the 10 yard warp.

The warp was 42" wide, and Our warp cost came to \$2.66 per yard.

WARP COST PER YARD, 42" wide \$2.66
 WEFT COST PER YARD----- 2.89
 =====
 Fabric cost per yard. -- \$5.55