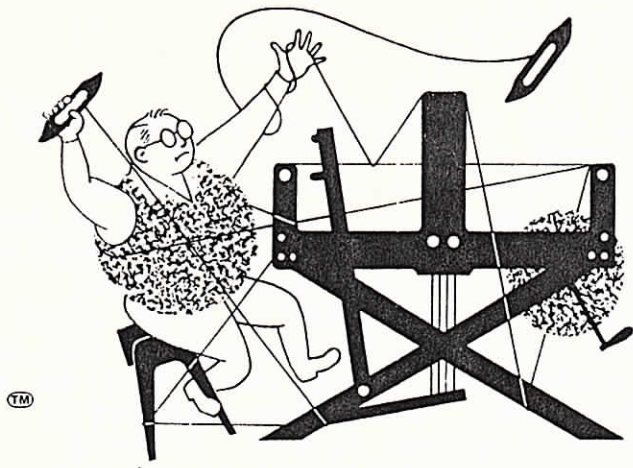


drafts and designs



a guide for 5 to 12 harness weaves

VOLUME 31, Number 2, OCTOBER, 1988

SCALLOPS AND DIAMONDS.

This pattern is a version of an extended POINT TWILL. This is one of the most versatile weaves there is, as you can change the tie-up, and have many different variations of pattern. This is just one of many different possibilities and it does give you an interesting effect. Just change the tie-up from this one and even using the same treading, you have other completely different results.

WARP:

Our warp was a 14/2 spun silk in dark navy blue. It has 3900 yards per lb.

WEFT:

Our weft was a 8 strand mercerized cotton floss in a color called "FESTIVE BLUE." It was the only weft thread used.

REED USED:

We used a 12 dent reed and double sleyed it, so that we had 24 ends per inch.

THREADING DRAFT:

| | | | | | | | |
|---|---|---|---|---|---|---|---|
| 8 | | | | | | | X |
| 7 | X | | | | | | X |
| 6 | | X | | | | | X |
| 5 | | | X | | | X | |
| 4 | | | X | | | X | |
| 3 | | | | X | | X | |
| 2 | | | | X | | X | |
| 1 | | | | | X | | |

SAMPLE:



TIE-UP DRAFT:

| | | | | | | | | |
|---|---|---|---|---|---|---|---|---|
| 8 | 0 | 0 | 0 | | | | | |
| 7 | 0 | 0 | | | | | 0 | |
| 6 | 0 | | | | | 0 | 0 | |
| 5 | | | | | 0 | 0 | 0 | |
| 4 | | | | 0 | 0 | 0 | | |
| 3 | | | 0 | 0 | 0 | | 0 | |
| 2 | | 0 | 0 | 0 | | | 0 | |
| 1 | 0 | 0 | 0 | | | | 0 | |
| | 1 | 2 | 3 | 4 | 5 | 6 | 7 | 8 |

DRAFTS AND DESIGNS:

Published monthly (except July and August) by Robin & Russ Handweavers, 533 No. Adams St., McMinnville, Ore., 97128.

SUBSCRIPTIONS: \$10.00 per year. The Canadian subscriptions are \$12.00 per year, and foreign are \$13.00 per year. Back issues or single copies are \$1.25 each, plus 25¢ per copy postage. All subscriptions start with the September issue. If you subscribe after September, back issues from September on will be sent to you.

volume 31, no. 2, October, 1988.

TREADLING SEQUENCE:

There are 30 shots in one complete treadling sequence. You have one shot of each treadle as I give it here, I have divided it for convenience into 4 parts so that you can keep track of the treadling easier. Here is the treadle sequence.

Treadle: 1,2,3,4,5,6,7,8,
1,2,3,4,5,6,7,8,
7,6,5,4,3,2,1,
8,7,6,5,4,3,2. End

End of one complete pattern repeat. To balance the pattern so it will be the same in the end, as in the beginning, you have to treadle # 1, 1 time to balance the pattern. Do repeat over and over as desired.

Also, there are many, many other interesting treadlings that you can work out on this tie-up. Treadle 1,2,3,4, 5 times and 3,2,1,4, 5 times, and then 5,6,7,8, 5 times, and 7,6,5,8, 5 times. There are many treadlings that you can work out. Try it. Set up a warp for mats, and do a series of 8 different mats on the one set-up.

MORE ABOUT THE THREADS USED:

Our 2/14's spun silk in navy, was an excellent warp. We did not have one broken thread in the entire sample. And it was fairly fast weaving also.

This silk has 3900 yards per lb., and it makes an excellent warp at 20 or 24 e.p.i. It also comes in 3 other colors. They are scarlet red, cool pink with a slight lavender touch, and a darker greyed-beige-brown color. Price is \$32.00 per lb., and this is a good price for this quality of spun silk warp.

Our weft thread was the 6 strand floss in a color called "FESTIVE BLUE."

This cotton floss normally sells for about \$22.00 per lb. However, we do have a stock of 20 colors yet, which we sell at \$8.00 per lb. while it lasts. I have just been offered another lot of 20 colors of this, but the price has gone up now, and we would have to pay more than we are selling it for. So, I have hesitated in ordering it because of this. It would have to sell for \$12.00 per lb. or even \$13.00 per lb. to give us a fair mark-up. It has 2080 yards per lb., is called 6 strand floss, is made of Egyptian cotton, and is one of the nicest threads we have ever had.

cost of the fabric:

We had a 10 yard warp, 40" wide, and it took 2 lbs. 6 oz. for the warp, so our total warp cost was \$76.00 or the cost per yard was \$7.60 per yard.

In the weft, we used 5 lbs. 1½ oz. of the 6 strand floss, Festive blue. This came to \$40.75 for enough weft for 9 yards of fabric. Our total weft cost was \$40.75. Our weft cost for 9 yards of finished fabric was \$4.53 per yard.

| | |
|------------------------------|----------|
| WARP COST PER YARD, 40" wide | - \$7.60 |
| WEFT COST PER YARD----- | 4.53 |
| ===== | |
| FABRIC COST PER YARD----- | \$12.13 |

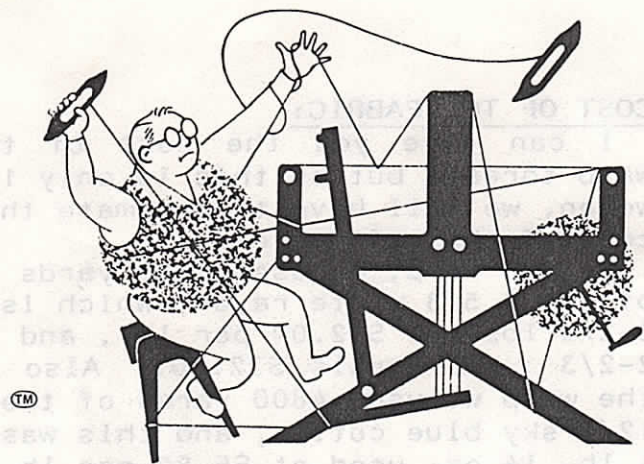
Also, our warp on the loom was 40" wide. When it was taken off the loom, and the tension was released, it was 37½" wide.

And in length, we measured it on the loom, and under tension, and it was 9 yards long, but after relaxing, and after the loom it relaxes somewhat, and when we measured it the 2nd time, it had lost 10" in this relaxation.

MORE ABOUT THE WEAVING:

I'd suggest that you use a firm, even, double beat. Strive to have a rhythm in your weaving, and you will find it goes faster and easier. I think that developing a rhythm is the most important thing to strive for, and the fabric will be nice and even when you do this. And, I personally like the silk and cotton combination in this fabric. I think it is a very pleasing one.

drafts and designs



a guide for 5 to 12 harness weaves

VOLUME 31, Number 5, JANUARY, 1989:

A 12 HARNESS BARLELY CORN WEAVE:

A friend in England sent me a book dated 1894, with a couple of interesting 16 harness patterns. I reduced one of these to 12 harnesses, and this is the result.

WARP THREADS USED:

We have used 2 threads in the warp. One is the 12/4 sky blue cotton, which is mercerized, and the 2nd one is the 6.5/3 ply spun rayon in a bleached white

- X - 12/4 sky blue merc. cotton
- O - 6.5/3 spun rayon, white

WEFT THREADS USED:

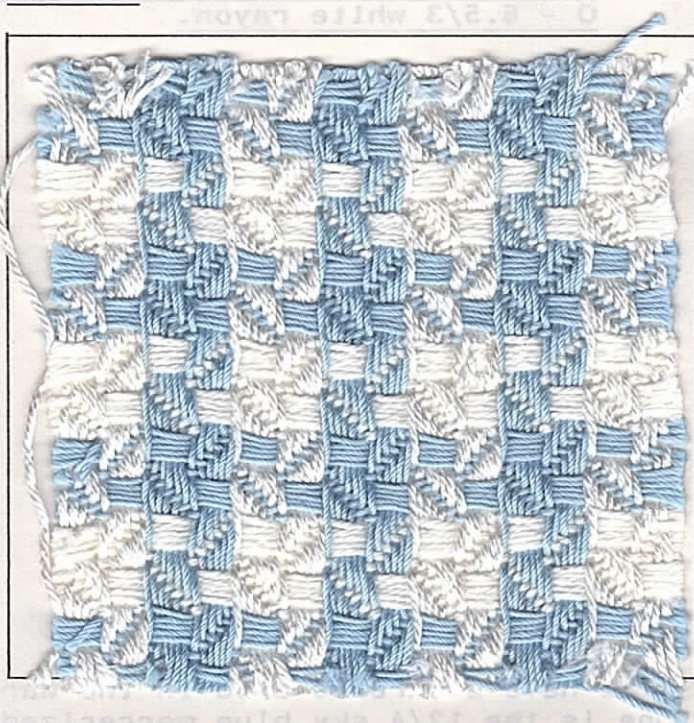
The same two threads that are used in the warp are also used as weft threads. Sky-blue 12/4 cotton, and 6.5/3 ply white rayon.

TIE-UP DRAFT:

| | | | | | | | | | | | |
|----|---|---|---|---|---|---|---|---|---|---|---|
| 12 | X | X | X | X | X | | | | | | X |
| 11 | X | X | X | X | X | | | | | | X |
| 10 | X | X | X | X | X | | | | | X | |
| 9 | X | X | X | X | X | | | | X | | |
| 8 | X | X | X | X | X | | X | | | | |
| 7 | X | | | | | | X | | | | |
| 6 | X | | | | | X | X | X | X | X | |
| 5 | | X | | | | X | X | X | X | X | |
| 4 | | | X | | | X | X | X | X | X | |
| 3 | | | | X | | X | X | X | X | X | |
| 2 | | | | | X | X | X | X | X | X | |
| 1 | | | | | | | X | | | | |

1 2 3 4 5 6 7 8 9 11
10 12

SAMPLE:



REED USED:

A 12 dent reed was used, and it was double-sleyed, 2 ends per dent or 24 threads per inch.

TREADLING SEQUENCE:

There are 24 shots in each complete pattern repeat. Treadle as follows:

- A. Treadle 1 to 12 - 12/4 sky blue
 - B. Treadle 1 to 12, 6.5/3 white
- End of one repeat. Repeat as desired.

DRAFTS AND DESIGNS:

Published monthly (except July and August) by Robin & Russ Handweavers, 533 North Adams St., McMinnville, Oregon, 97128.

SUBSCRIPTIONS:

- \$10.00 per year, U.S.A.
- \$12.00 per year, Canada.
- \$13.00 per year, foreign

Back issues or single copies are \$1.25 each, plus 25¢ per copy, postage. All subscriptions start with the September issue. If you subscribe after September, back issues from September on will be sent to you.

VOLUME 31, NO. 5, January, 1989.

KEY TO COLORS IN THE WARP:

- X - 12/4 sky blue, merc. cotton
- O - 6.5/3 white rayon.

THREADING DRAFT:

| | | |
|----|---|---|
| 12 | O | X |
| 11 | O | X |
| 10 | O | X |
| 9 | O | X |
| 8 | O | X |
| 7 | O | X |
| 6 | O | X |
| 5 | O | X |
| 4 | O | X |
| 3 | O | X |
| 2 | O | X |
| 1 | O | X |

COST OF THREADS USED:

We have 2 threads used in the warp. One is the 12/4 sky blue mercerized cotton. The other is the 6.5/3 ply spun rayon in white. We have this rayon in natural now, and we also have the 12/4 cotton in a cornflower blue. THE COTTON is on sale at \$6.80 per lb. by the 1 1/2 to 2 lb. cones, as is the cornflower blue also. The 6.5/3 ply rayon is \$12.00 per lb. and we have used all we had and are trying to get more. The 12/4 cotton has 2520 yards per lb., and the 6.5/3 rayon has 1800 yards per lb.

COST OF THE FABRIC:

I can give you the cost of the warp thread, but as this is only 1/2 woven, we will have to estimate the cost of the weft thread.

In the warp, we used 4800 yards of the 6.5/3 white rayon, which is 2-2/3 lbs. at \$12.00 per lb., and so 2-2/3 x 12 equals \$32.00. Also in the warp we used 4800 yards of the 12/4 sky blue cotton, and this was 1 lb. 14 oz. used at \$6.80 per lb or this cost \$12.75. Thus, our total warp cost was \$44.75, so the warp cost per yard, 40" wide comes to \$4.48 per yard.

As for the weft, I am going to give an approximation of about 1/3 more than the warp cost, so we will say the weft cost was \$6.72 per yard. This is high, but I would rather be safe than sorry.

WARP COST PER YARD, 40" \$4.48.
 WEFT COST PER YARD, 38" \$6.72

=====

FABRIC COST PER YARD \$11.20

CLASSIFIED ADS:

2 ply cotton flake in turquoise. 50 lbs. on hand, on 2 1/2 to 3 lb. cones. It has 3,000 yards per lb. & the price is 6.00 per lb. bny the full cone or \$6.80 per lb. if you want just 1/2 or 1 lb.

SINGLE PLY, SPACE DYED ACRYLIC: 1.5/1 in count.

It is a fairly smooth thread, flake in style, with WINE, NATURAL, TURQUOISE, AND CITRON. It could be used for warp or weft, it is so strong. It has a slight flake effect, so this also would add to the fabric interest. Price is \$9.60 per lb. We had 50 lbs. of this before and sold it all out, so I was delighted to be able to obtain more. On about 2 lb. cones.

RIC-RAC COTTON FOR KNITTING OR FOR WEAVING:

We have 8 colors on hand, and the price is \$8.00 per lb. Has been very popular. When sold as a knitting thread, it usually sells in the knit shops in skens at about \$25.00 per lb. Our price \$8.00. Write for samples

DRAFTS AND DESIGNS:

Published monthly (except July and August) by Robin & Russ Handweavers, 533 No. Adams St., McMinnville, Ore., 97128.

SUBSCRIPTIONS: \$10.00 per year. The Canadian subscriptions are \$12.00 per year, and foreign are \$13.00 per year. Back issues or single copies are \$1.25 ea., plus 25¢ per copy postage. All subscriptions start with the September issue. If you subscribe after September, back issues from September on will be sent to you.

VOLUME 31, No. 6, February, 1989:

TREADLING SEQUENCE:

There are 8 shots in one complete pattern repeat. It has what I call a walking tie-up or walking treadling sequence. On this pattern, you do treadle from 1 to 8 over and over.

I did some experimenting with both color and treadle sequence, and there are many other very interesting patterns that can be woven on this set-up. I wove 1 to 4 twice with a doubled thread, and then 5 to 8 one time with a single thread for a very interesting effect. I will give you one or two other sequences that do give very interesting patterns. Treadle 1,2,3,4,3,2,1,8,7,6,5,6,7,8. Treadle 1,2,3,4,1,2,3,4,1,2,3,4,5,6,7,8,7,6,5, and repeat over and over. Then, other possibilities are that you can re-tie your treadles, and obtain many, many different effects.

MORE ABOUT THE THREADS USED:

The 4/2/14's w.c. SPUN SILK is an 8 ply spun silk. It was so fine it could not be sold in the single ply state. So, I had a company in England 8 ply this for us. In it's single ply form, it had approximately 8,000 yards per lb. The price is \$36.00 per lb., and it came to us on about 1-3/4 to 2 lb. cones. We can wind off for you 8 oz. or 1 lb. tubes at no extra cost.

The 2/14's SPUN SILK IN RED, is a 2 ply thread. We used it double on the bobbin for weft on this fabric,

and in fact, our weft could have been called 4/14's spun silk.

Also, several have asked about the w.c. after the size number. This company is basing the size of the silk on the worsted count (w.c.) method of measurement, 560 yards per lb. for a 1/1 spun silk, or a worsted yarn.

Some companies base the size of the silk on the cotton count (c.c.) and so then you see c.c. after the size designation. There are at least 4 other methods used besides these 2.

COST OF THE FABRIC:

Our warp was 40" wide, 20 ends per inch, so we had 800 warp ends. 800 x 10 yards of warp, means that we used 3,000 yards in the warp. We used 7 lbs. 6 oz. of thread in the warp, so this x \$36.00 per lb. giving us a total warp cost of \$265.50 for 10 yards. So, our warp actually cost about \$26.55 per yard.

In the weft we used 19 1/2 oz. in 4 yards of fabric. So, we will say 5 oz. per yard in the weft at \$32.00 per lb. Our weft cost per yard came to \$10.00 per yard. This made our silk fabric cost \$36.55 per yard.

| | |
|-------------------------------------|----------------|
| <u>WARP COST PER YARD, 40" wide</u> | <u>\$26.55</u> |
| <u>WEFT COST PER YARD, 36" wide</u> | <u>\$10.00</u> |
| ===== | |
| <u>FABRIC COST PER YARD -----</u> | <u>\$36.55</u> |

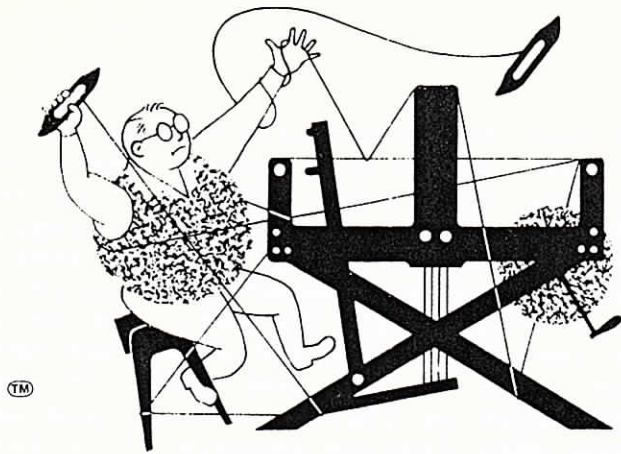
MORE ABOUT THE FABRIC:

You want to be sure to use a firm, even, double beat. Beat after you change the shed, in a quick, even, double beat.

There were a few knots in this silk, and when I came to a knot, I did pull it apart, and then glued it with spee-dee cement. It was dry in one minute and you could continue to weave immediately. This small bottle of spee-dee cement is 2 oz. and it sells for \$1.75 and is well worth the price, to make weaving easy.

There were no broken threads in the first 4 yards, except for knots. When I came to a knot, I pulled it apart, glued it together smooth, and proceeded with the weaving.

It did weave down from a 40" width of warp to 36" width in the finished fabric. More than usual.



drafts and designs

a guide for 5 to 12 harness weaves

VOLUME 31, Number 7, MARCH, 1989.

DELIGHTFUL, AN 8 HARNESS TWILL.

There is so much you can do with an 8 harness twill, by changes in the tie-up and treading that I could probably spend several years on such samples, but we do like to have different techniques, so this is the last of the twills for awhile. This one, we did not even change the tie-up, but just revised our treading, and changed the weft threads.

WARP:

Our warp is the 4/2/14's w.c Spun Silk Thread, which has 980 yards per pound.

WEFT:

Our weft is a 2/14's spun silk, with the beige-grey being used as a single thread, and the navy is one that we doubled, winding 2 ends together on one bobbin.

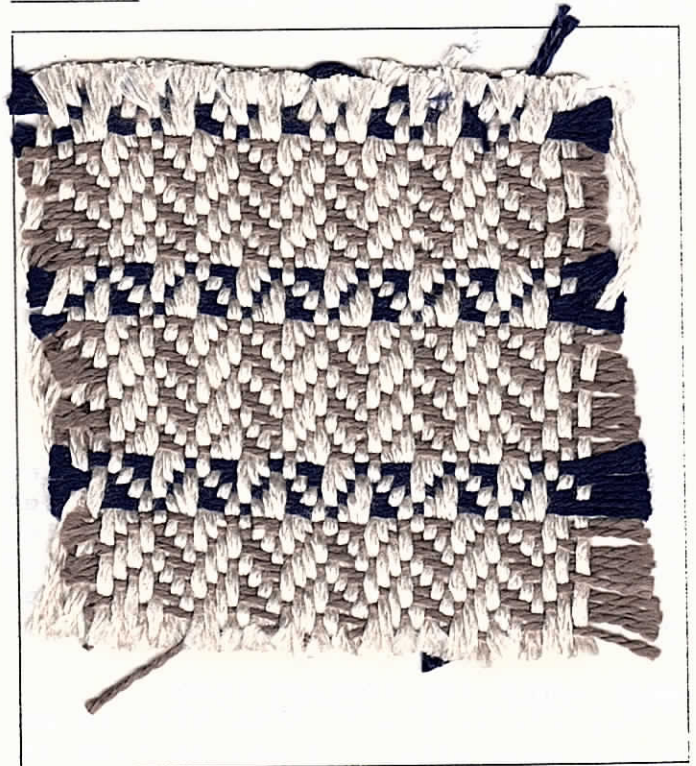
REED USED:

We used a 10 dent reed, and double sleyed it, 2 ends per dent or 20 threads per inch.

THREADING DRAFT:

| | | | | | | | |
|---|--|--|---|--|--|--|---|
| 8 | | | X | | | | X |
| 7 | | | X | | | | X |
| 6 | | | X | | | | X |
| 5 | | | X | | | | X |
| 4 | | | X | | | | X |
| 3 | | | X | | | | X |
| 2 | | | X | | | | X |
| 1 | | | X | | | | X |

SAMPLE:



TIE UP DRAFT:

| | | | | | | | | |
|---|---|---|---|---|---|---|---|---|
| 8 | | | X | | X | X | X | |
| 7 | | | X | | X | X | X | |
| 6 | | | X | | X | X | X | |
| 5 | | | X | | X | X | X | |
| 4 | | | X | | X | X | X | |
| 3 | | | X | | X | X | X | |
| 2 | | | X | | X | X | X | |
| 1 | | | X | | X | X | X | |
| | 1 | 2 | 3 | 4 | 5 | 6 | 7 | 8 |

DRAFTS AND DESIGNS:

Published monthly (except July and August) by Robin & Russ Handweavers, 533 No. Adams St., McMinnville, Ore., 97128.

SUBSCRIPTIONS: \$10.00 per year. The Canadian subscriptions are \$12.00 per year, and foreign are \$13.00 per year. Back issues or single copies are \$1.25 each, plus 25¢ per copy for postage. All subscriptions start with the September issue. If you subscribe after September, back issues from September on will be sent to you.

VOLUME 31, Number 7, MARCH, 1989:

There are 16 shots in one complete pattern repeat. This time, it is not a walking treadling, but it is a very easy treadling to weave, and to remember. Here is the sequence used:

1. Treadle # 1, beige-grey silk
2. Treadle # 2, beige-grey silk
3. Treadle # 3, beige-grey silk
4. Treadle # 4, beige-grey silk
5. Treadle # 1, beige-grey silk
6. Treadle # 2, beige-grey silk
7. Treadle # 3, beige-grey silk
8. Treadle # 4, beige-grey silk
9. Treadle # 1, beige-grey silk
10. Treadle # 2, beige-grey silk
11. Treadle # 3, beige-grey silk
12. Treadle # 4, beige-grey silk
13. Treadle # 5, navy silk, doubled
14. Treadle # 6, navy silk, doubled
15. Treadle # 7, navy silk, doubled
16. Treadle # 8, navy silk, doubled

End of one complete pattern repeat. Do repeat over and over as desired.

MORE ABOUT THE THREADS USED:

The 4/2/14's w.c. SPUN SILK is an 8 ply spun silk. It was so fine it could not be sold in the single state. So, I had a company in England 8 ply this for us. In it's single ply form, it has approximately 8,000 yards per lb. The price is \$36.00 per lb. and it came to us on about 1-3/4 to 2 lb. cones. We can wind off for you 8 oz. or 1 lb. tubes at no extra cost.

The 2/14's SPUN SILK, we have it

in four different colors. We have it in red, beige-grey, navy, and pink. It has 3900 yards per lb. In the weft, we used the beige-grey singly, and we took the navy, wound 2 ends together on one bobbin, and used it as a single weft thread. The navy, we took and wound two ends together, and used it as one weft thread. This silk is \$32.00 per lb., and we have only limited amounts of it left now. On about 1-1/2 to 2 lb. cones, and we can wind off 1/2 lb. or 1 lb. for you at no extra cost.

COST OF THE FABRIC:

Some silks are so expensive you cannot believe the cost. Our warp cost on this fabric, 40" wide on the loom was \$26.55 per yard. I was so delighted with the weft cost though on this one. In 3 1/2 yards of weft, we used 7-1/2 oz. of the beige-grey spun 2/14's silk. And we used just 4 oz. of the 2/14's navy, doubled, on the bobbin. Our total weft cost per 3-1/2 yards was \$23.00 or the weft cost per yard was \$6.57.

| | |
|------------------------------|----------------|
| warp cost per yard, 40" wide | \$26.65 |
| weft cost per yard, 35" wide | \$ 6.57 |
| ===== | |
| FABRIC COST PER YARD | \$33.22 |

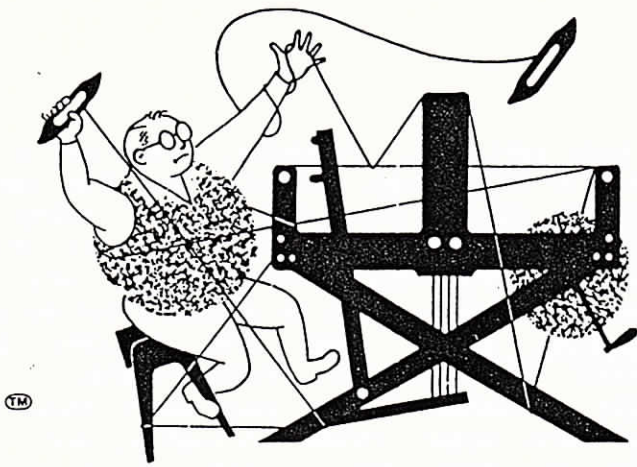
MORE ABOUT THE FABRIC:

I did use a firm, even, double beat on this, beating before you change the shed and then after you change the shed.

There are quite a few knots in this warp because of the 8 plying, but with the help of the spee-dee cement, I was able to cut out the knots, glue the ends together, and proceed with the weaving in about 1 to 2 minutes at the most. There were no actual broken threads in this 10 yard warp.

However, using the 2/14's, a finer weight in the weft, brought the width down quite a bit, and when I took the fabric off the loom, it measured 35" wide, and I started with 40"

I could think of 100 other different treadlings, so I do hope that you put some extra warp on to experiment with.



drafts and designs

a guide for 5 to 12 harness weaves

VOLUME 31, Number 8, APRIL, 1989.

MOVING SHADOWS, AN EXCITING 8 HARNESS TWILL:

Yes, the 8 harness twill has 1000's of variations. Compare this sample to last month's, and you can see what I am referring to. Tie-up changes, and color changes, and texture changes, are just a few of the many ways you can vary an 8 harness twill.

WARP:

We have 3 colors of 3 ply tussah silk noil in our warp. They are:

- A. LIGHT LAVENDER
- B. BURGUNDY WINE
- C. MEDIUM PURPLE

This 3 ply silk noil came on about 1 lb. 2 oz. cones, and it has approximately 1600 yards per lb.

WEFT:

The same 3 colors that are used in the warp are also used as weft threads.

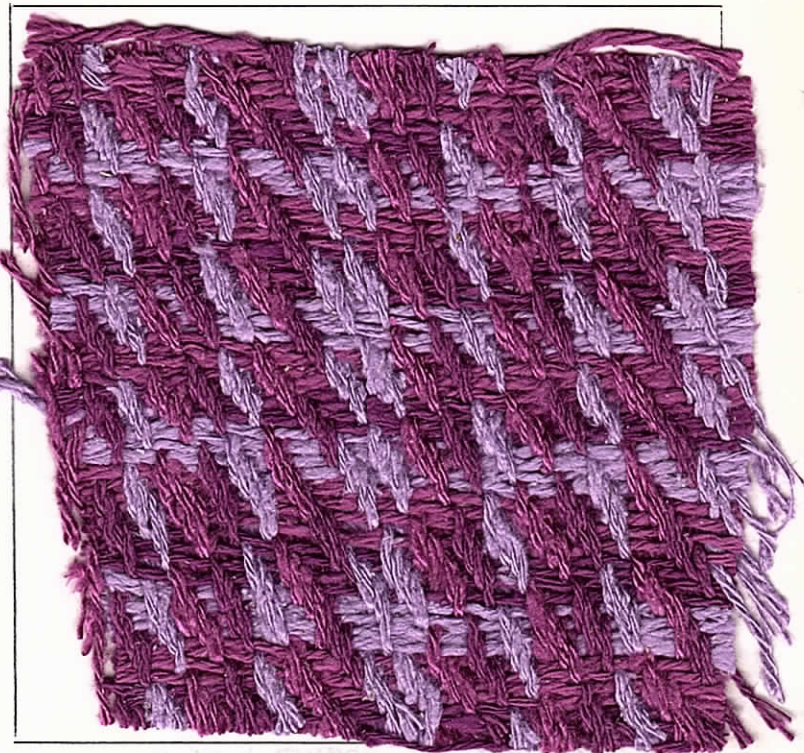
REED USED:

We used a 10 dent reed, and double sleyed it, 2 ends per dent or 20 per inch.

THREADING DRAFT:

| | | | | | | | | | | | |
|---|--|---|---|---|---|---|---|---|---|---|---|
| 8 | | | B | | C | | A | | B | | A |
| 7 | | A | | | C | | A | | B | | A |
| 6 | | A | | B | | | A | | B | | A |
| 5 | | A | | B | | C | | | B | | A |
| 4 | | A | | B | | C | | A | | | C |
| 3 | | | B | | C | | A | | B | | C |
| 2 | | | | C | | A | | B | | C | |
| 1 | | | | A | | B | | C | | A | |

SAMPLE:



TIE-UP DRAFT:

| | | | | | | | | | |
|---|---|---|---|---|---|---|---|---|---|
| 8 | 0 | 0 | 0 | | | | | 0 | 0 |
| 7 | 0 | 0 | | | | | 0 | 0 | 0 |
| 6 | 0 | | | | 0 | 0 | 0 | 0 | 0 |
| 5 | | | | | 0 | 0 | 0 | 0 | 0 |
| 4 | | | | 0 | 0 | 0 | 0 | | 0 |
| 3 | | | 0 | 0 | 0 | 0 | | | 0 |
| 2 | | 0 | 0 | 0 | 0 | | | | 0 |
| 1 | 0 | 0 | 0 | 0 | | | | | 0 |

1 2 3 4 5 6 7 8 A B
9 10

DRAFTS AND DESIGNS:

Published monthly (except July and August) by Robin & Russ Handweavers, 533 No. Adams St., McMinnville, Ore., 97128

SUBSCRIPTIONS: \$10.00 per year. The Canadian subscriptions are \$12.00 per year, and foreign are \$13.00 per year. Back issues or single copies are \$1.25 each, plus 25¢ per copy for postage. All subscriptions start with the September issue. If you subscribe after September, back issues from September on will be sent to you.

VOLUME 31, Number 8, April, 1989:

TREADLING SEQUENCE:

Please note that there are 24 shots in each pattern repeat. Here is the step by step sequence that we used:

1. Treadle # 8, Light Lavender
2. Treadle # 7, Light Lavender
3. Treadle # 6, Light Lavender
4. Treadle # 5, Light Lavender
5. Treadle # 4, Burgundy Wine
6. Treadle # 3, Burgundy Wine
7. Treadle # 2, Burgundy Wine
8. Treadle # 1, Burgundy Wine
9. Treadle # 8, Medium Purple
10. Treadle # 7, Medium Purple
11. Treadle # 6, Medium Purple
12. Treadle # 5, Medium Purple
13. Treadle # 4, Light Lavender
14. Treadle # 3, Light Lavender
15. Treadle # 2, Light Lavender
16. Treadle # 1, Light Lavender
17. Treadle # 8, Burgundy Wine
18. Treadle # 7, Burgundy Wine
19. Treadle # 6, Burgundy Wine
20. Treadle # 5, Burgundy Wine
21. Treadle # 4, Medium Purple
22. Treadle # 3, Medium Purple
23. Treadle # 2, Medium Purple
24. Treadle # 1, Medium Purple

End of one complete pattern repeat. Do repeat over and over as desired.

MORE ABOUT THE FABRIC:

First of all, use a medium, even, double beat. Beat with the shed open, change to the next treadle and beat again.

This is an easy fabric to weave. My thought about this one was that I could have made a better sample if I had used the warp at 24 ends per inch, instead of

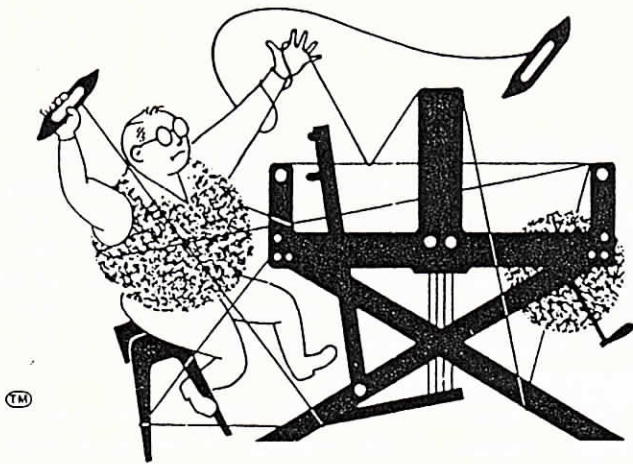
20 ends per inch. Actually, when you do weave a twill, you normally set the warp a little closer than if you are doing a plain weave. I like the feel of this fabric and the color movement is a very interesting one. This is actually called an advancing twill, AND THE COLORS DO CHANGE POSITIONS IN THIS FABRIC. I would recommend that you wash this in luke warm water, rinse thoroughly, and allow to drip dry. Silk is a very rewarding fiber to weave with, and I feel that the results are often much nicer than one anticipates. We did an 11 yard warp, and it was set 40" wide. Also, we did use 8 ends of 18/3 nylon stitching twine as a selvage on both edges. This prevented breakage of warp, and we actually had not one broken thread in the weaving of this fabric.

MORE ABOUT THE THREADS USED:

This three (3) ply tussah silk is one we found in England. We had it 3 plied, and then had it dyed to order for us. We have about 25 different colors on hand, and we have at least 10 colors due in here in September from our visit to England in June. We actually have between 4 and 5 thousand pounds of silk that will come to us in September. There will be about 25 colors that we had dyed to order for us, along with many different naturals in both tussah silk noil, and in spun silk. This silk has been selling at \$18.00 per pound here in our shop for about the past two years. Do not know what the new colors will cost until it clears through customs, and we also know what the shipping charges are. In our new order coming in we will have at least 10 colors in a 2 ply, about the same weight as per this 3 ply.

PLEASE EXCUSE THE DELAY IN THESE LAST 3 ISSUES OF THIS YEAR BEING SENT TO YOU.

I had an operation in late March, and had two complete knee units put in my knees. I was in the hospital about a month, and then travelled the rest of the time until last week (Middle of August) and I have just been able to put the crutches aside, and for the past three days I have been getting along without them. During this time, I spent about 6 to 8 days in the shop since March 28th, and so now I must work hard and get all caught up. I hope to have this done by the end of September at the latest.



drafts and designs

a guide for 5 to 12 harness weaves

VOLUME 31, Number 9, May, 1989:

AN EXPERIMENT IN WARP WEIGHTS:

This 8 harness project was an experiment in using 4 different weights of warp thread in one project.

WARP:

There are 4 different threads used in the warp of this project. They are as follows:

- X -- 12/2 Nat. Merc. Durene Cotton
- O -- 20/2 Nat. Merc. Durene Cotton
- A -- 60/3 Nat. Unmer. Pima Cotton
- B -- 5/2 Blea. White Perle Cotton

WEFT:

In the weft, we used a 12/2 Mercerized Durene Cotton, and the color is a LIGHT BLUE GREEN.

REED USED:

We used a 12 dent reed, and had a special sleying of the reed. I will give the sleying below by sizes of thread, but you must remember that their may have been an overlap of one or two threads of one size with threads of a different size.

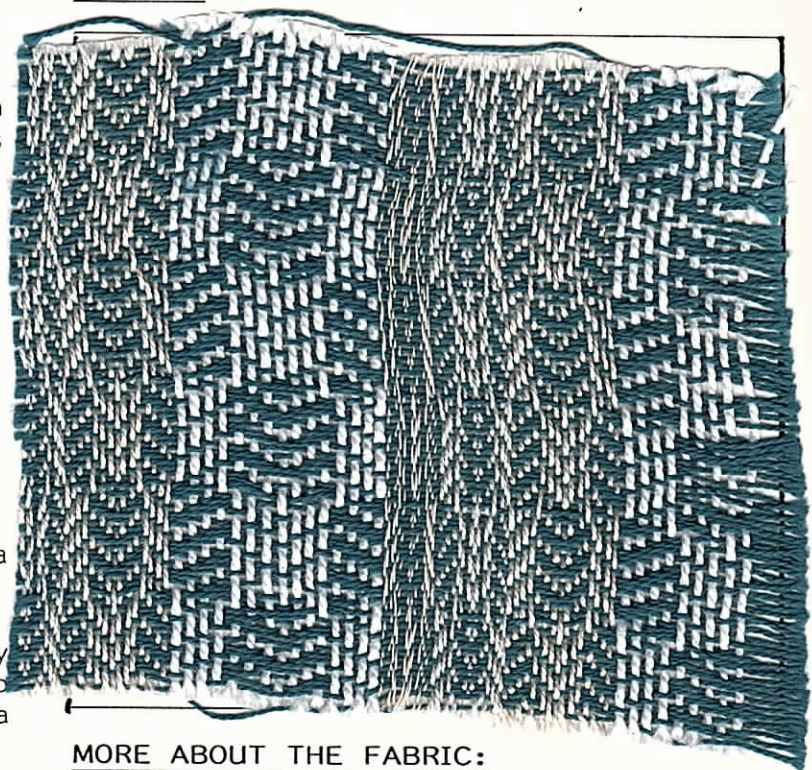
1. 12/2 was 2 ends per dent.
2. 20/2 was 3 ends per dent
3. 60/3 was sleyed 4 ends per dent.
4. 5/2 was sleyed 1 end per dent.

There were overlaps of this sleying where 1 or 2 threads of one size were in turn sleyed with ends of another size.

KEY TO THREADS IN THE WARP:

- X--12/2 Nat. Merc. Durene Cotton
- O--20/2 Nat. Merc. Durene Cotton
- A--60/3 Natural Unmercerized Pima Cotton
- B-- 5/2 WHITE Perle Cotton.

SAMPLE:



MORE ABOUT THE FABRIC:

I was intrigued with such a combination of threads, and so went ahead with the weaving of this. I think that I would make one change of I were doing it again. I would probably use a heavier, perle 3 cotton if I were doing it again, instead of the perle 5 I did use. I think the pattern would show much better if I had done this, and I really think that it would have been better if I had just used 3 different weights instead of 4 as I have done. It was quite a challenge. I thought that the 60/3 natural unmercerized pima cotton would give problems, as it does not

DRAFTS AND DESIGNS:

Published monthly (except July and August) by Robin & Russ Handweavers, 533 N. Adams St., McMinnville, Ore. 97128

SUBSCRIPTIONS: \$10.00 per year. The Canadian subscriptions are \$12.00 per year, and foreign are \$13.00 per year. Back issues or single copies are \$1.25 each, plus 25¢ per copy, for postage. All subscriptions start with the September issue. If you subscribe after September, back issues from September on will be sent to you.

THREADING DRAFT:

| | | | | | | | | | | | |
|---|---|--|---|--|-----|--|-----|--|---|--|-----|
| 8 | B | | B | | A | | O | | O | | X |
| 7 | B | | B | | A A | | O | | O | | X X |
| 6 | B | | B | | A A | | O | | O | | X X |
| 5 | B | | B | | A A | | O | | O | | X X |
| 4 | B | | B | | A A | | O | | O | | X X |
| 3 | B | | B | | A A | | O O | | O | | X X |
| 2 | B | | B | | A A | | O O | | O | | X X |
| 1 | B | | A | | A | | O | | X | | X |

seem strong on the cone, but to my surprise, we had practically no broken warp threads except on one selvage. And, I felt it was our fault that we had the broken threads on one edge, as it was an inexperienced weaver who did weave this for us.

I would suggest a firm even beat. Open the shed, beat, throw your shuttle, and change to the next shed and beat again.

MORE ABOUT THE THREADS USED:

The 12/2 mercerized natural durenne cotton comes on about 2 to 2-1/2 lb. cones. It has 5040 yards per lb., and is an excellent warp or weft thread. It is \$6.80 per lb. by the full cone, or \$8.00 per lb., if we have to wind off 1/2 lb. or 1 lb. tubes.

The Perle 5, white, mercerized cotton comes on about 1 lb. 2 oz. cones, and it is \$16.00 per lb. The 20/2 natural durenne cotton. It too comes on about 2-1/2 lb. cones, and it is \$6.80 per lb., by the full cone or \$8.00 per lb., if we have to wind off 1/2 lb. tubes for you, the price then is \$8.00 per lb.

It has about 2100 yards per lb.

The 20/2 mercerized, natural cotton warp is also durenne cotton. It has 8400 yards per lb., comes on about 2-1/2 lb. cones, and it is \$6.80 per lb., by the full cone, and \$8.00 per lb., if we wind off 1/2 lb. or 1 lb. tubes for you. It is an excellent warp at all times.

TREADLING SEQUENCE:

There are 32 shots in each complete pattern repeat. Do repeat over and over as desired:

Treadle 1,2,3,4, four times.

Treadle 8,7,6,5 four times.

End of one complete pattern repeat. Do repeat over and over.

COST OF THE FABRIC:

In our warp, we used 6 oz. of the 20/2 durenne, this costing \$2.55. We used 8 oz. of the 12/2 durenne, this costing \$3.40, and we used 3 oz. of the 60/3 pima cotton and this cost \$1.50. And in the 5/2 bleached white perle cotton, we used one pound 5 ounces, and this cost was \$21.00. Our total warp cost was \$28.45, and so cost per yard of our 10 yard warp was \$2.85 per yard.

In the weft, we used 1 lb. 11 oz. of the 12/2 light blue green cotton. At \$6.80 per lb., our weft cost came to \$11.48, and we had 9 yards of finished fabric from our 10 yard warp. Thus, the weft cost came to a total cost of \$11.48, or the cost per yard was \$1.29.

Thus, our total cost for 9 yards of this fabric was \$39.93, and this means that the cost per yard was \$4.42 per yard.

TIE-UP DRAFT:

| | | | | | | |
|---|---|---|---|---|---|------------|
| 8 | O | O | O | | O | O |
| 7 | O | O | O | | O | O |
| 6 | O | O | O | O | | O |
| 5 | O | O | O | O | | O |
| 4 | | O | O | O | O | O |
| 3 | | O | O | O | O | O |
| 2 | | O | O | O | O | O |
| 1 | O | | O | O | O | O |
| | 1 | 2 | 3 | 4 | 5 | 6 7 8 9 10 |

DRAFTS AND DESIGNS:

Published monthly (except July and August) by Robin & Russ Handweavers, 533 No. Adams St., McMinnville, Ore., 97128.

SUBSCRIPTIONS: \$10.00 per year. The Canadian subscriptions are \$12.00 per year and foreign subscriptions are \$13.00 yearly. Back issues or single copies are \$1.25 each, plus 25¢ per copy for postage. All subscriptions start with the September issue. If you subscribe after September, back issues from September on will be sent to you.

VOLUME #31, Number 10, JUNE, 1989:

TIE-UP DRAFT:

| | | | | | | |
|---|---|---|---|---|---|---|
| 6 | X | X | X | | | |
| 5 | X | X | X | | | |
| 4 | | X | X | X | | |
| 3 | X | X | X | | | |
| 2 | X | X | | X | | |
| 1 | X | | X | X | | |
| | 1 | 2 | 3 | 4 | 5 | 6 |
| | | | | A | B | |

REED USED:

We used a 10 dent reed, double sleyed, 2 ends per dent or 20 per inch.

PLAN FOR ALTAR CLOTH:

Please note that there are 130 threads in each complete repeat of the pattern. For the altar cloth to be slightly over 36" wide, you must repeat the entire threading draft six times, and then to balance it on both sides, you must also add the first 10 threads to balance the pattern. You have 790 threads in the actual width of the altar cloth. This comes out to 39-1/2" width on the loom, and it weaves down to about 37-1/2" wide, and after washing, it was slightly over 36". I wove 5 yards of this as the altar was 66" wide, and it was 36" high. The plan is to have a gold cross embroidered on the center corner of each 4 squares of twill. They all come together to a center point, and this is where the gold crosses will be embroidered.

MORE ABOUT THE FABRIC:

One thing I should mention is that you want to use a firm, even, double or even a triple beat. Beat, throw the shuttle, beat, change to the next shed and beat again, and then throw the shuttle again.

Also, I felt that using a natural cotton and rayon blend weft, instead of the bleached white, made the pattern stand out much more. Actually it was quite easy to weave this fabric except for one thing. In weaving, the take-up is different as we have stripes of plain weave mixed in between blocks of twill. The plain weave always seems tighter and is, than the twill. And as I had plain weave on both edges, this warp gradually became a little tighter than the twill portion, so when I would throw the shuttle, sometimes the plain weave area on each edge would not separate as well as the twill portion. It did this only on the edges, as it was weaving tighter than the other plain weave areas. To take care of this, be sure to open your shed, beat, then throw the shuttle, beat again, change to the next shed and beat again before you throw the shuttle through.

TREADLING SEQUENCE:

There are 102 complete shots in each complete pattern. I will write it out the short method, and not the long one.

1. Treadle 1,2,3,4, 12 times.
2. Treadle 3,2,1,4, 12 times.
3. Treadle 5,6,5,6,5,6, one time.

Then repeat each complete unit over and over for your desired length. This pattern would also make beautiful placemats, it would be excellent in a tablecloth and in pillow covers, and other decorative fabric uses.

End of one complete pattern repeat. Do repeat over and over as desired.

COST OF THE THREADS USED:

Our 10/2 Barbour linen, bleached white, came on 1/2 kilo tubes. These tubes do vary slightly in size. This linen has 1500 yards per lb. The natural is \$22.40 per lb., and the bleached white is \$25.60 per lb.

The cotton and rayon combination thread comes in natural, in bleached white, and in this pale green. Every once in a while we are able to get small amounts of this in color, but we cannot keep it in stock. The cotton and rayon weft thread is one that we purchase from a knitting firm, rather than a weaving firm.

The 10/2 Barbour linen is supposed to be one of the best qualities available, but I did find knots and slubs in this that I had not expected.