

drafts and designs

a guide for 5 to 12 harness weaves

VOLUME 33, Number 1, September 1990

INDIAN TURQUOISE:

Starting with a shadow weave threading draft, and changing the tie-up slightly, we come up with some very interesting and unusual effects. This sample is one of the results.

WARP:

Our warp is 4 colors of 2/9's Shetland wool from England. The colors are as follows:

- X - Badger 2/9's Shetland Wool
- O - Marine 2/9's Shetland Wool
- A - Starling 2/9's Shetland Wool
- B - Brown 2/9's Shetland Wool

WEFT:

Our weft is all silk noil, 3 ply, in in 2 colors. I must correct this as the royal blue is a 50% silk, 50% wool in 3 ply, and the other is all silk noil, 3 ply, in Dark Turquoise. The silk & wool blend is \$16.00 per lb., and the all silk noil is \$18.00 per lb.

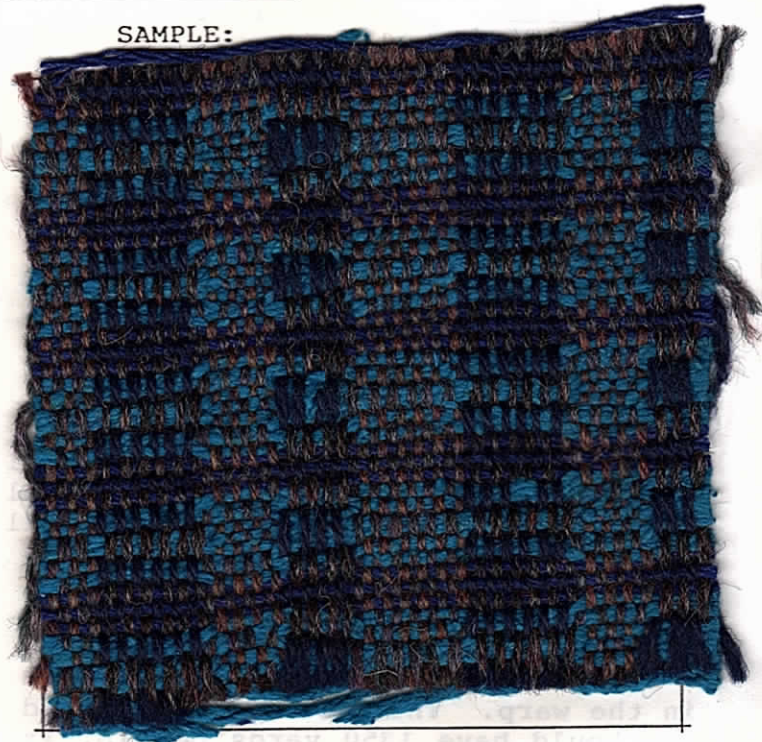
REED USED:

The reed used was an 10 dent, and it was double sleyed, 2 ends per dent or 20 ends per inch.

THREADING DRAFT:

8				X	X	X	X	X	X
7				O	O	O	O	O	O
6			A	A	A	A			
5			B	B	B	B			
4			O	O	O	O			
3			X	X	X	X			
2	A	A	A	A	A	A			
1	B	B	B	B	B	B			

SAMPLE:



TIE-UP DRAFT

8		O	O			O				
7				O	O		O			
6			O	O		O				
5	O			O		O				
4			O	O	O					
3	O	O					O			
2	O			O	O					
1		O	O			O				
		1	2	3	4	5	6			

DRAFTS AND DESIGNS:

Published monthly, (except July and August), by Robin & Russ Handweavers, 533 No. Adams St., McMinnville, Ore., 97128.

SUBSCRIPTIONS:

are \$10.00 per year. The Canadian and foreign subscriptions are \$15.00 each year, as it costs us 52¢ each to mail these to Canada, and 67¢ each per issue for foreign subscriptions.. Back issues or single copies are \$1.25 each plus 25¢ postage. All subscriptions start with the September issue. If you subscribe after Sept., all issues from Sept. on will be sent to you.

VOLUME 33, Number 1, September, 1990.

TREADLING SEQUENCE:

There are 12 shots in each complete pattern repeat. Here is the sequence that we used on this sample.

1. Treadle # 1, Dk. Turq. Silk Noil
 2. Treadle # 2, Dk. Turq. Silk Noil
 3. Treadle # 3, Dk. Turq. Silk Noil
 4. Treadle # 4, Dk. Turq. Silk Noil
 5. Treadle # 3, Dk. Turq. Silk Noil
 6. Treadle # 4, Dk. Turq. Silk Noil
 7. Treadle # 3, Dk. Turq. Silk Noil
 8. Treadle # 2, Dk. Turq. Silk Noil
 9. Treadle # 1, Dk. Turq. Silk Noil
 10. Treadle # 6, Royal Blue Silk-Wool
 11. Treadle # 5, Royal Blue-Silk-Wool
 12. Treadle # 6, Royal Blue Silk Noil
- End of one complete pattern repeat.
Do treadle over and over.

COST OF THE THREAD USED:

We have 4 colors of Shetland Wool in the warp. This is size 2/9's, and it should have 1350 yards per lb. It came to us on about 3 lb. cones, but we can wind off 1/2 lb. tubes. The price of the Shetland is \$12.00 lb.

In the weft, we have two different threads. One is the 3 ply, Dark Turq. Silk Noil, which comes on about 1 lb. cones and is \$18.00 per lb. The other weft thread is a 3 ply, 50% silk and 50% wool yarn in Royal Blue. It comes on about 1 lb. cones, and it is \$18.00 per lb. The 50% silk, 50% wool yarn comes 14 different colors, and it is \$16.00 per lb. It is on hand.

COST OF THE FABRIC:

In our warp, we used 12,000 yards of the Shetland Wool. This came to 8.9 lbs. of warp. At \$12.00 per lb., our total warp cost comes to \$106.66. Breaking it down to cost per yard, it comes to \$7.11 per yard for the warp.

We wove 7 yards and 8" of the fabric. We used 2 lbs. 7 oz. of the 3 ply dark turquoise silk noil, and we used 11 oz. of the 50% silk, 50% wool. One was \$18.00 per lb., and the other was \$16.00 per lb. Our total weft cost was \$54.88 for 7-1/4 yards, so the weft cost per yard came to \$7.57.

Warp cost per yard, 40" wide \$7.11

Weft cost per yard, 39" wide 7.56

+++++

Fabric cost per yard comes to \$14.67

MORE ABOUT THE THREADS USED:

While fuzzy, the shetland wool makes a good warp. It is spun in oil, so when finished, one must wash the fabric in luke-warm water, with woolite or with Ivory snow. Rinse thoroughly, allow to drip dry, and then steam press.

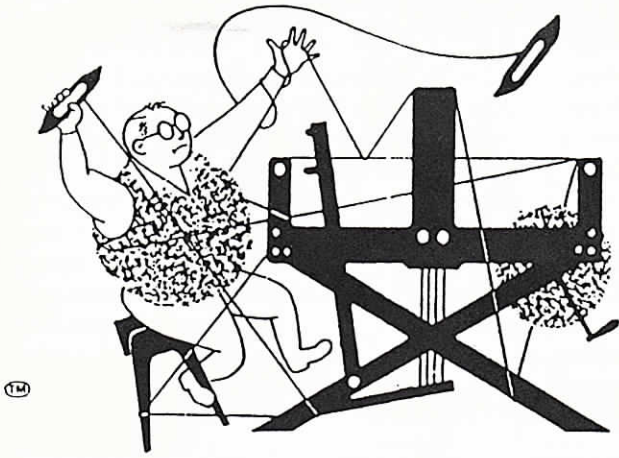
MORE ABOUT THE FINISHED FABRIC:

Note that there is a long float thread on the back of the fabric. We experimented with this, cutting these float thread, and making it a fringed fabric on one side. It is very easy to do this, and makes a quite unusual fabric. We debated about doing this and presenting it to you this way, but we finally decided to show you the correct side.

Notice the unusual shaped effect you have on this fabric. The group of 4 navy blue float warp thread on the surface takes a distinctly different shape, and when the weft threads gather together, you get another shape. This is quite an unusual effect and one you do not often see on a fabric..

The shetland wool does cling a little, but we used a double beat, and beat before and after throwing each weft thread, and this seemed to eliminate this problem. Enough for this month.

drafts and designs



a guide for 5 to 12 harness weaves

VOLUME 33, Number 2, October, 1990

AN EXPLOSION OF THE AURORA BOREALIS:

A most pleasing color combination and weave effect is achieved by using 4 colors in a shadow weave threading draft, and experimenting with the tie-up and treading, until you achieve an effect you like.

WARP:

In this fabric, we used 4 colors of the SHETLAND WOOL HEATHERS in the warp. The colors were:

- X - 2/9's Shetland, BADGER
- O - 2/9's Shetland, MARINE
- A - 2/9's Shetland, STARLING
- B - 2/9's Shetland, BROWN

Most of these Shetland Wool-Spun Yarns, are heather blends, which provides much more depth in the warp when several colors are blended together.

WEFT:

We used 4 different threads in the weft, none of them Shetland. We used one color of 2/18's, and one color of 3/18's botany worsted yarn. These are new colors. Lavender-plum is 2/18's and purple is 3/18's. The heavy rib yarn is a PLUM tapestry wool. And, last, but not least, we used a very dark blue green wool tweed, single ply. The 3/18's have 3360 ypp, the 2/18's have 5040 ypp, and both come on 1/2 lb. cones. The wool tweed has about 1200 ypp, and the tapestry wool comes on 4 oz. skeins, 175 yards per skein. The wool tweed comes on about 1 lb. cones, and it sells for \$8.00 per lb. The 2/18's and 3/18's come on 1/2 lb. cones and sell for \$24.00 per lb.

SAMPLE:



REED USED:

A 10 dent reed was used, and it was double sleyed, 2 ends per dent, or 20 ends per inch (epi).

TIE-UP DRAFT:

8				o	o		o	
7						o	o	o
6				o	o		o	
5				o			o	o
4						o	o	o
3				o	o			o
2				o			o	o
1					o	o		o
	1	2	3	4	5	6		

DRAFTS AND DESIGNS:

Published monthly, (except July and August), by Robin & Russ Handweavers, 533 North Adams St., McMinnville, Oregon, 97128.

SUBSCRIPTIONS:

are \$10.00 per year. The Canadian subscriptions are \$15.00 per year, and the foreign subscriptions are \$15.00 per year. It now costs 52¢ each to send to Canada, and 67¢ each to send them abroad. Back issues or single copies are \$1.25 each, plus 25¢ postage. All subscriptions start with the September issue. If you subscribe after September, all issues from September on will be sent to you.

VOLUME 33, Number 2, October, 1990.

THREADING DRAFT:

8	X X X X X X
7	O O O O O O
6	A A A A
5	B B B B
4	O O O O
3	X X X X
2	A A A A A A
1	B B B B B B

KEY TO COLORS IN THE WARP:

- X - 2/9 Shetland BADGER
- O - 2/9 Shetland MARINE
- A - 2/9 Shetland STARLING
- B - 2/9 Shetland BROWN

TREADLING SEQUENCE:

There are 44 shots in each complete pattern repeat. Here is the sequence:

1. Treadle # 6 - 3/18's Purple A.
2. Treadle # 1 - 3/18's Purple A.
3. Treadle # 6 - 3/18's Purple A.
4. Treadle # 1 - 3/18's Purple A.
5. Treadle # 6 - 3/18's Purple A.
6. Treadle # 5 - Blue Green Tweed
- REPEAT THESE 6 SHOTS, 3 times.
19. Treadle # 6 - Fuschia Tap Tone.
20. Treadle # 4 - Fuschia tap tone.
21. Treadle # 6 - Fuschia tap tone.
22. Treadle # 5 - Blue Green Tweed
23. Treadle # 6 - 2/18's Lavender
24. Treadle # 1 - 2/18's Lavender

25. Treadle # 6 - 2/18's Lavender
 26. Treadle # 1 - 2/18's Lavender
 27. Treadle # 6 - 2/18's Lavender
 28. Treadle # 5 - Blue Green Tweed
 - Repeat # 23 through 28, 2 more times.
 41. Treadle # 6 - Fuschia Tap Tones.
 42. Treadle # 4 - Fuschia Tap Tones.
 43. Treadle # 6 - Fuschia Tap Tones.
 44. Treadle # 5 - Blue Green Tweed
- Enc of one pattern repeat. Do repeat over and oversd

MORE ABOUT THE THREADS USED:

In the weft, the heavy rib thread was our tapestry tone in Fuschia. It comes in 39 colors, \$5.95 per 4 oz. skein, and has 175 yards per skein.

The blue green wool tweed comes on about 1 lb. tubes and it is \$8.00 per The 4 colors of Shetland wool are some of 17 colors we have. It has 1200 yards per lb., and is \$12.00 per lb.

The 2/18's lavender and 3/18's

in purple are regular stock items, have 5040 and 3360 yards per lb. respectively, come on 1/2 lb. cones, and are \$24.00 per lb.

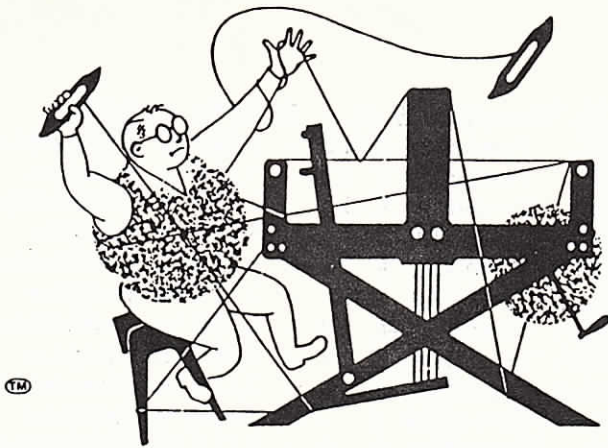
Even for myself, this is quite an unusual mixture of threads and the results are very pleasing.

COST OF THE FABRIC:

On a 15 yard warp, we used 10 lbs. of Shetland. Total warp cost was \$120.00 or cost per yard was \$8.00 per yard.

In the weft we used 9 oz. of tweed, \$4.50, 2-1/2 oz. of lavender and 3-1/2 of purple or 6 oz. cost \$9.00. Used 3 skeins of tapestry tones, cost \$17.85. All together these come to \$31.35 for 6-1/2 yards of fabric. So, the weft cost per yard comes to \$4.83.

WARP COST PER YARD----- \$8.00
 WEFT COST PER YARD-----4.83
 =====
FABRIC COST PER YARD-----\$12.83



drafts and designs

a guide for 5 to 12 harness weaves

VOLUME 33, Number 3, November, 1990.

THE NIGHT HAS 1001 EYES.

Each of the diamonds in this pattern also has 2 eyes. Isn't it fun to see what comes from experimenting. This sample evolved from using a walking treading, to try and make the weaving easier.

WARP:

Our warp is a black 2/17's worsted that we have on special at \$8.00 per lb. It is a botany quality, and our regular stock in 2/18's sells for \$24.00 per lb. A tremendous buy. It comes on about 2-1/2 lb. cones. We also have it in a dark navy.

WEFT:

Our weft is in two sizes. We used the 2/18's color # 6, Grenadier Blue for one weft thread, and the other was a 3/18's worsted in PURPLE. This is a new color not on our sample sheets yet.

REED USED:

A 12 dent reed was used, and it was double sleyed, 2 ends per dent, or 24 ends per inch.

THREADING DRAFT:

SAMPLE:



8	x		x		x		x		x
7	x x		x x		x x		x x		x x
6	x x		x x		x x		x x		x x
5	x x		x x		x x		x x		x x
4	x	x	x	x	x	x	x	x	x
3	x		x x		x x		x x		x x
2	x		x x		x x		x x		x x
1			x		x		x		x

DRAFTS AND DESIGNS:

Published monthly, (except July and August), by Robin & Russ Handweavers, 533 North Adams St., McMinnville, Oregon, 97128.

SUBSCRIPTIONS:

are \$10.00 per year. The Canadian subscriptions are \$15.00 per year, and the foreign subscriptions are \$15.00 per year. It now costs 52¢ each to send to Canada, and 67¢ each to send them abroad. Back issues or single copies are \$1.25 each, plus postage. All subscriptions start with the September issue. If you subscribe after September, all issues from September on will be sent to you.

VOLUME 33, Number 3, November, 1990

TIE-UP DRAFT:

8			0			0			0			0		
7	0	0			0				0					0
6			0	0			0					0		
5		0			0	0			0				0	
4				0			0	0				0		
3		0				0			0	0				
2	0		0	0					0				0	0
1		0				0						0		
	1	2	3	4	5	6	7	8	9	10	12			
												11	13	

TREADLING SEQUENCE:

We used what is sometimes called a walking treadling. This is designed to make easier and faster weaving, by using an even treadle progression. Our treadling sequence for this sample is to treadle 1 to 13, and back to 1, and up to 13, and back to one and repeat over and over. However, in this treadling that I've used here, you alternate the two colors, having 3/18's purple on treadles 1,3,5,7,9,11,13, and then on treadles 2,4,6,8,10,12, you use the 2/18's in 2/18's Grenadier Blue. Here is how I treadled it.

1. Treadle # 1 - 3/18's purple
2. Treadle # 2 - 2/18's Grenadier
3. Treadle # 3 - 3/18's purple
4. Treadle # 4 - 2/18's Grenadier
5. Treadle # 5 - 3/18's purple
6. Treadle # 6 - 2/18's Grenadier
7. Treadle # 7 - 3/18's purple
8. Treadle # 8 - 2/18's Grenadier

9. Treadle # 9 - 3/18's purple
10. Treadle # 10 - 2/18's Grenadier
11. Treadle # 11 - 3/18's purple
12. Treadle # 12 - 2/18's Grenadier
13. Treadle # 13 - 3/18's purple
14. Treadle # 12 - 2/18's Grenadier
15. Treadle # 11 - 3/18's purple
16. Treadle # 10 - 2/18's Grenadier
17. Treadle # 9 - 3/18's purple
18. Treadle # 8 - 2/18's Grenadier
19. Treadle # 7 - 3/18's purple
20. Treadle # 6 - 2/18's Grenadier
21. Treadle # 5 - 3/18's purple
22. Treadle # 4 - 2/18's Grenadier
23. Treadle # 3 - 3/18's purple
24. Treadle # 2 - 2/18's Grenadier

End of one complete pattern repeat.
Do repeat over & over as desired.

COST OF THE THREADS USED:

The warp is 2/17's worsted, black, which we have on special at \$8.00 lb. The regular price is \$24.00 per lb., so you can see what a good price this is. The 3/18's in the weft is purple, a color not even on our latest sample sheets yet. Both it, and the 2/18's in our 36 colors are \$24.00 per lb. on 1/2 lb. cones. The 2/18's has 5040 yards per lb., and the 3/18's has 3360 yards per lb. Both are on 1/2 lb. cones.

Costs:

In 2 yards 4", we used 6 ounces of the 2/18's in Grenadier Blue, and we used 10 oz. of the 3/18 worsted in the same two yards. Both are \$24.00 per lb., so the total weft cost for 2 yards was \$15.00, or the weft cost per yard comes to \$7.50 per yard.

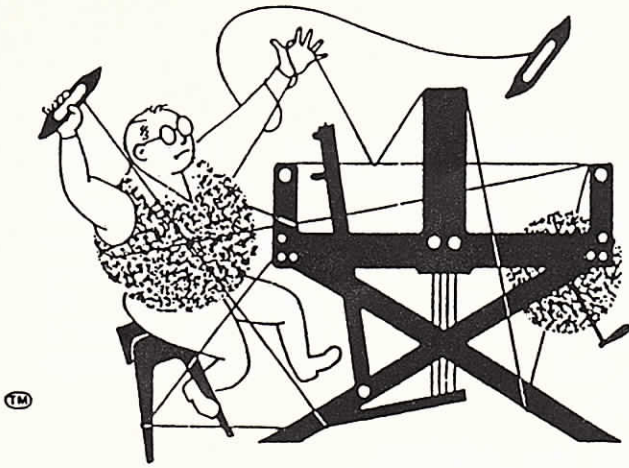
The warp cost was \$8.00 per lb., and we used 3-1/4 lbs. for the warp, so our total warp cost was \$26.00 for our 15 yard warp. The cost per yard comes to \$1.74 per yard.

WARP COST PER YARD, 40" wide \$ 1.74
WEFT COST PER YARD, 38" wide \$ 7.50

=====

FABRIC COST PER YARD COMES TO \$ 9.24

drafts and designs



a guide for 5 to 12 harness weaves

VOLUME 33, Number 4, December, 1990

RISQUE: risque RISQUE:

This pattern is called a birdseye point twill, from an old English text. The tie-up and treadlings are original with myself, and of course, the choice of weft threads was your editor's.

This old English book that I am now referring to is entitled "TECHNICAL TERMS IN THE TEXTILE TRADE," by Midgley, and I have referred to it many times the past few years. I found this book in England at a JUMBLE SALE, at a large Manor House. No one that I tell about it, seems to have ever heard of this book.

WARP:

Our warp is a black 2/17's worsted that we have on special at \$8.00 per lb. It is a botany quality, and our regular stock in 2/18's sells at \$24.00 per lb. A good buy. It came to us on cones of about 2-1/2 lbs. each. We also have it in a dark navy.

WEFT:

In our weft on this project, we used 3 different weight threads. One was a 4/13-1/4's worsted, and is the superwash wool, and the color was #

sample:



18, Turquoise. The 2nd thread used was a 3/18's worsted, with 3360 yards per lb., and the color is purple. The 3rd thread is our 2/18's worsted in color # 36, Grenadier Blue.

THREADING DRAFT:

8		X		X		X		X		X
7		X X		X X		X X		X X		X X
6		X X		X X		X X		X X		X X
5		X X		X X		X X		X X		X X
4		X		X		X		X		X
3		X		X X		X X		X X		X
2		X		X X		X X		X X		X
1				X		X		X		X

DRAFTS AND DESIGNS:

Published monthly, (except July and August), by Robin & Russ Handweavers, 533 North Adams St., McMinnville, Oregon, 97128.

SUBSCRIPTIONS:

are \$10.00 per year. The Canadian subscriptions are \$15.00 per year, and the foreign subscriptions are \$15.00 per year. It now costs 52¢ each to send to Canada, and 67¢ each to send them abroad. Back issues or single copies are \$1.25 each, plus postage. All subscriptions start with the September issue. If you subscribe after September, all issues from September on will be sent to you.

VOLUME 33, Number 4, December 1990:

REED USED:

We used a 12 dent reed, and it was double sleyed, 2 ends per dent, or 24 threads per inch.

TREADLING SEQUENCE:

There are 38 shots in each complete pattern repeat, but do remember that this is in 3 different colors also. I will give you the treadling both by treadle # and color sequence.

Treadle

5,6,7,8,1,2,3,4,3,2,1,8,7,6,5, all in 2/18's Grenadier Blue. Then, you do treadle 1,2,3,4,1,4,3,2,1, in the 4/13-1/4's in Turquoise. Then you continue with 5,6,7,8,7,6,5 in the 3/18's purple. And the last group of the 38 threads is treadled 4,3,2,1,4,3,2,1. in 4-13-1/4's in the same Turquoise. These 38 shots are the end of one complete pattern repeat. Do repeat over and over again as desired.

COST OF THE THREADS USED:

The 2/18's worsted has 5040 yards per lb., comes on approximately 8 oz. cones, and it is \$24.00 per lb. The superwash wool is machine washable. It is size 4/13-1/4's worsted in size with about 1610 yards per lb. It too is \$24.00 per lb.

The 3/18's worsted (sometimes called 18/3 instead of 3/18's, has 3360 yards per lb., comes on about 1/2 lb. cones, and it is \$24.00 per lb. also. All 3 weft threads are \$24.00 per lb. We have about 22 colors in either 2/12's or 3/18's size, and both are the same yardage per lb.

COST OF THE FABRIC:

Our black worsted warp in 2/17's is on sale at \$8.00 per lb. while it lasts. Regular price is \$24.00 per lb. It has 4760 yards per lb. We used 3 lbs. 1 oz. of warp for 15 yards, 40" wide, so our warp cost was \$24.00 for all, or \$1.60 per yard.

In 7-1/2 yards of finished weft, we used 1 lb. 9 oz. of Superwash, Turquoise. We used 8.5 oz. of the 18/2 worsted, Grenadier Blue, and we used 8 oz. of 3/18's in purple. Our total weft cost for 7.5 yards was \$62.25. The cost of the weft, per yard was \$8.30 per yard.

WARP COST PER YARD, 40" wide \$1.60
WEFT COST PER YARD, 7-1/2 yards 8.30
FABRIC COST PER YARD-----\$ 9.90

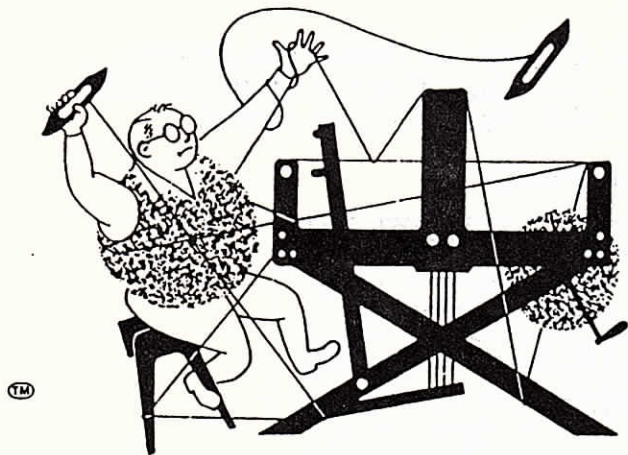
TIE-UP DRAFT:

8		0	0	0				0	0
7	0		0	0			0		0
6	0	0		0		0			0
5	0	0	0		0				0
4				0		0	0	0	0
3			0		0		0	0	
2		0			0	0		0	0
1	0				0	0	0		0

1 2 3 4 5 6 7 8 9 10

MORE ABOUT THE FABRIC:

It was a very easy to weave fabric, and we never had one broken thread and no problems whatsoever. Use a light, even, double beat, beating after you throw the shuttle, and then after changing to the next shed and before throwing the shuttle, you beat again. I was so pleased with the 2/17's worsted. Very soft, and yet strong enough to give no problems. And we have it in a dark navy as well as the black.



drafts and designs

a guide for 5 to 12 harness weaves

VOLUME 33, Number 5, January, 1991

THE FLIGHT OF THE CANADIAN GEESE:

Yes, this fascinating, 8 harness, overshot pattern, does remind one of the flights of the Canadian Geese that go over our home each fall and spring. And, besides that, this is an exciting overshot pattern that we developed from an 8 harness point twill and reverse point twill pattern.

WARP USED:

Two threads of size 20/2 egyptian cotton were used in the warp. These are colors discontinued by the manufacturer, and which we have in good supply. The colors are:

- X - 20/2 Egy. Cotton, Princeton Or.
- O - 20/2 Egy. Cotton, Medor.

WEFT USED:

In the weft, we used 2 threads completely different than the warp. They were as follows:

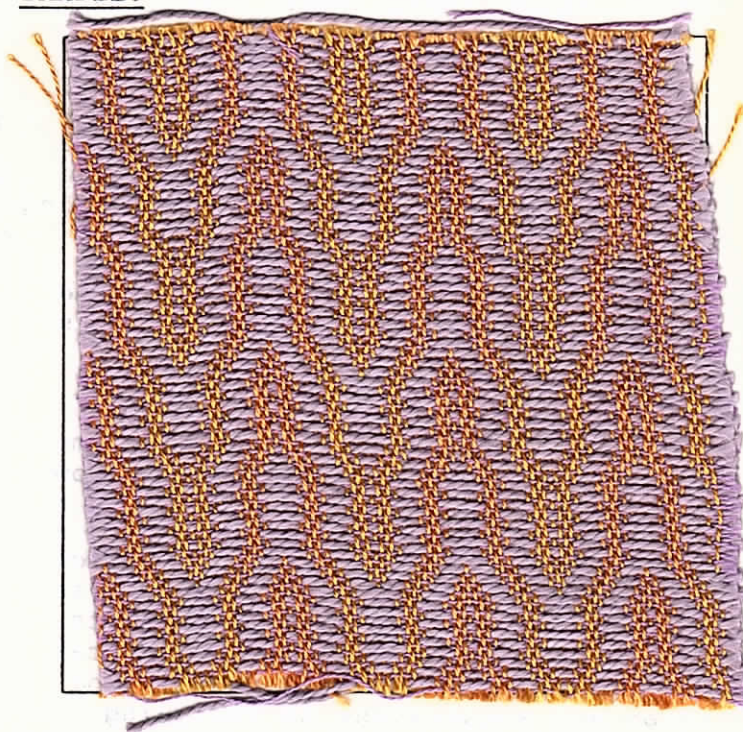
Our tabby thread was a 24/2 light lavender CPM Cotton. The CPM stands for Combed Peeler, Mercerized, and it tells you what quality of cotton it is.

For the pattern thread, we used a perle 5 cotton, in Heather Lavender. This is a color we purchased because we liked the colors available.

REED USED:

A 15 dent reed was used, and it was double sleyed, 2 ends per dent, or 30 ends per inch.

SAMPLE:



TIE-UP DRAFT:

8										
7										
6										
5										
4										
3										
2										
1										
	1	2	3	4	5	6	7	8	9	10

DRAFTS AND DESIGNS:

Published monthly, (except July and August), by Robin & Russ Handweavers, 533 North Adams St., McMinnville, Oregon, 97128.

SUBSCRIPTIONS:

are \$10.00 per year. The Canadian subscriptions are \$15.00 per year, and the foreign subscriptions are \$15.00 per year. It now costs 52¢ each to send to Canada, and 67¢ each to send them abroad. Back issues or single copies are \$1.25 each, plus postage. All subscriptions start with the September issue. If you subscribe after September, all issues from September on will be sent to you.

VOLUME 33, Number 6, February, 1991

THREADING DRAFT:

9	A	O	X
8	A	O	X
7	A	O	X
6	A	O	X
5	A	O	X
4	A	O	X
3	A	O	X
2	A	O	X
1	A	O	X

KEY TO COLORS IN THREADING DRAFT

- A - 2/16 Ramie, Columbian Gold
- X - 2/16 Ramie, Lt. Rose Beige
- O - 2/16 Ramie, Gold Beach Gold

TREADING SEQUENCE USED:

Please note that there are 81 shots in each complete pattern repeat. I will list them in 9 lines, 9 shots on each line.

1. 1,2,3,4,5,6,7,8,9,
2. 3,4,5,6,7,8,9,1,2,
3. 5,6,7,8,9,1,2,3,4,
4. 7,8,9,1,2,3,4,5,6,
5. 9,1,2,3,4,5,6,7,8,
6. 2,3,4,5,6,7,8,9,1,
7. 4,5,6,7,8,9,1,2,3,
8. 6,7,8,9,1,2,3,4,5,
9. 8,9,1,2,3,4,5,6,7.

End of one complete pattern repeat. Do repeat over and over again as is desired.

MORE ABOUT THE FIBERS USED:

In our warp, we did a 15 yard warp, 40" wide, and sett at 24 epi. It took 6 lbs. of ramie, 2 lbs. of each of the 3 colors. The total warp cost for 15 yards, 40" wide was \$90.00, so the cost per yard of the warp was \$9.60 per yard. In the weft, we used 2 lbs. 6 oz. of the 6 strand cotton floss in the 6 yards of finished fabric we did of this pattern. The total weft cost for 6 yards was \$19.00, so the cost per yard came to \$3.17 per yard

WARP COST PER YARD, 40" wide \$9.60
WEFT COST PER YD. 38" wide \$ 3.17
FABRIC COST PER YARD-----\$12.77

CLASSIFIED ADVERTISING:

HEAVY COTTON FLAKE, 2 ply: Dark Navy:
We have 175 lbs. of this due in soon. It has 1360 yards per lb., can be used for warp or weft, and will be \$6.00 per lb. Probably will be on 2-1/2 lb. cones, and we can wind off 1/2 or 1 lb. tubes at no extra cost. ROBIN & RUSS HANDWEAVERS, 533 No. Adams St., McMinnville, Oregon 97128

LIGHT LAVENDER PERLE 5 cotton.

We will have 20 lbs. of this, and will sell it at 1/2 of the regular price, as we will have it at \$8.00 per lb. This has 2100 yards per lb., Do not know put-up yet. Price will be \$8.00 per lb. ROBIN & RUSS HANDWEAVERS, 533 No. Adams St., McMinnville, Oregon 97128.

Beautiful, acrylic-rayon boucle with silver metallic twist. 2 colors are coming in. Natural and Aqua with a silver twist, and pink and natural, with a silver metallic twist. Both of these will have 1450 yards per lb. Price will be a good one for this quality of yarn, at \$8.00 per lb. Robin & Russ Handweavers, 533 No. Adams St., McMinnville, Ore. 97128.

3 RAYON CHAINETTES, in Peach, Mauve, and light blue: These 3, limited amounts are coming in, and it will sell for \$6.00 per lb. ROBIN & RUSS, 533 N. Adams., McMinnville, Ore. 97128.



drafts and designs

a guide for 5 to 12 harness weaves

VOLUME 33, NUMBER 8, April, 1991

SIMPLICITY PLUS:

This 9 harness twill could be done in 5,6,7,or 8 harnesses also. I liked the simplicity of this sample, and yet felt it was a distinctive fabric. It would make an excellent upholstery fabric, and should be very striking in various colors as table mats or a table cloth.

WARP:

As it is so expensive to use linens we have continually used the 16/2 RAMIE as a warp thread in many of our fabrics. We used 3 colors here in the warp. The colors were:

- X - Light Rose Beige 16/2 Ramie
- O - Gold Beach Gold, 16/2 Ramie
- A - Columbian Gold, 16/2 Ramie

WEFT:

In the weft, we used 3 colors. Two of them, the Columbian Gold and the Gold Beach Gold were used in the warp. The 3rd color in the weft is the 16/2 Ramie, Silver Grey.

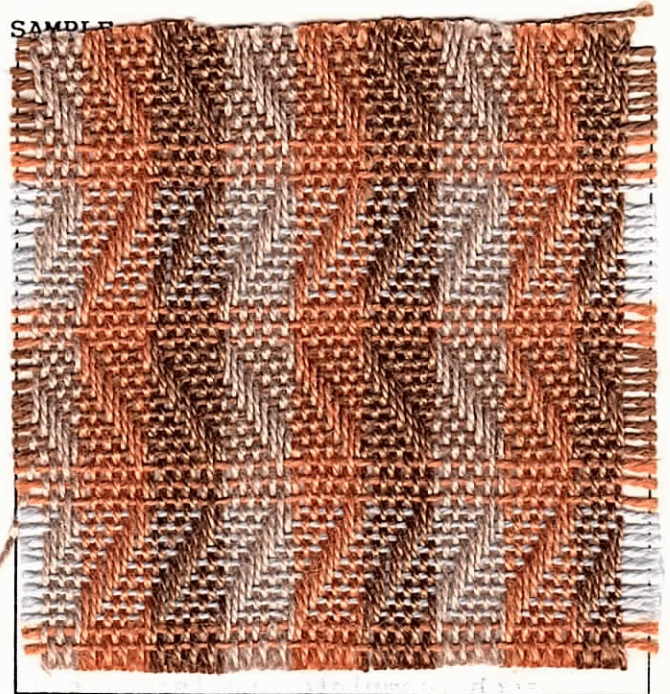
REED USED:

We used a 12 dent reed, and double-sleyed it 2 ends per dent, or 24 threads per inch.

MORE ABOUT THE PATTERN:

This 9 harness twill can be called Florentine Twill, and we found it in an old English book entitled "THE MERCURY DICTIONARY OF TEXTILE TERMS. This name can also be applied to 5, 7 and 9 and 11 harness twills.

SAMPLE



TIE-UP DRAFT:

9			X		X		X					X
8		X		X		X						X
7			X		X						X	X
6		X		X					X		X	
5			X					X		X		X
4		X					X		X		X	
3						X		X		X		X
2					X		X		X		X	
1				X		X		X				X
		1	2	3	4	5	6	7	8	9	10	11

DRAFTS AND DESIGNS:

Published monthly, (except July and August), by Robin & Russ Handweavers, 533 North Adams St., McMinnville, Oregon, 97128.

SUBSCRIPTIONS:

are \$10.00 per year. The Canadian subscriptions are \$15.00 per year, and the foreign subscriptions are \$15.00 per year. It now costs 52¢ each to send to Canada, and 67¢ each to send them abroad. Back issues or single copies are \$1.25 each, plus postage. All subscriptions start with the September issue. If you subscribe after September, all issues from September on will be sent to you.

VOLUME 33, Number 8, April, 1991.

THREADING DRAFT:

9	A	O	X
8	A	O	X
7	A	O	X
6	A	O	X
5	A	O	X
4	A	O	X
3	A	O	X
2	A	O	X
1	A	O	X

KEY TO COLORS IN THREADING DRAFT

- A - 2/16 Ramie, Columbian Gold
- X - 2/16 Ramie, Lt. Rose Beige
- O - 2/16 Ramie, Gold Beach Gold

TREADLING SEQUENCE USED:

Please note that there are 24 shots in each complete pattern repeat. Here is the sequence we used:

1. Treadle 1,2,3,4,5,6,7,8,9, with the Columbian Gold, 16/2 Ramie.
2. Treadle 10, 11, 10, with 16/2 Ramie in the GOLD BEACH GOLD.
3. Treadle 9,8,7,6,5,4,3,2,1, with the 16/2 Ramie, Silver Grey.
4. Treadle 11, 10, 11 with the GOLD BEACH GOLD COLOR 16/2 Ramie.

End of one complete pattern repeat. Do repeat over and over as desired.

MORE ABOUT THE RAMIE THREAD USED:

We find that the 16/2 ramie is much easier to work with than the linen in the same size. It is softer, more pliable, resists rot,

resists mildew, won't shrink, won't stretch, etc. It is called the Queen of the textile fibers. It surpasses linen in all physical and chemical structures except one, and that has to do with the size of a cell.

I find it much easier to weave with than any linen. And we had this dyed for us in Switzerland, with the best dyes available, for the best fastness possible. In fact, the dyeing charges alone were about \$4.00 per lb.

This yarn is softer than linen, and so it is more flexible, and thus is a much easier thread to handle for both warp and weft. We have about 30 colors on hand. It has 2400 yards per lb., and is available on 600 yard tubes. It came on 1 1/2 to 2 lb. cones, and we wind it off onto 600 yard tubes. Price is \$6.00 per 600 yard tube or \$24.00 per lb. If you check the price of the 16/2 linen from Sweden (same size as the Ramie) you find that it is \$36.00 per lb., while the ramie is \$24.00 per lb.

COST OF THE FABRIC:

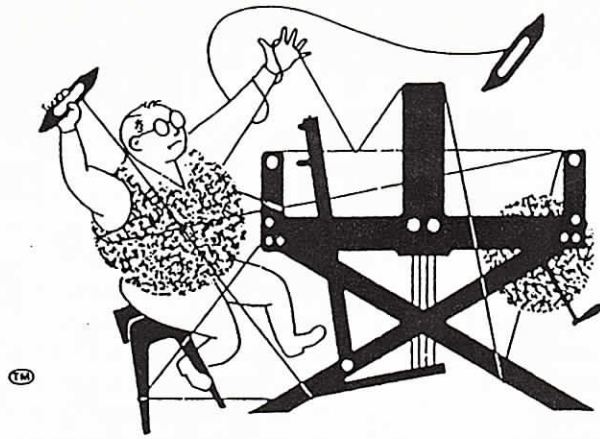
In our warp, we did a 15 yard warp, 40" wide, and it took exactly 6 lbs. at \$24.00 per lb., or the total warp cost was \$144.00. The cost per yard, 40" wide comes to \$9.60 per yard for the warp.

In the weft in 6-2/3 yards of finished fabric, it took 2 lbs. 8 oz. of the 16/2 Ramie in 3 different colors, so the warp cost is settled. We did weave 6-1/2 yards of this fabric, and it took 1 lb. 8 oz. for the weft in 6-1/2 yards or \$40.00 in the 6-1/2 yards of fabric. So, the weft cost per yard came to \$6.15 per yard.

WARP COST PER YARD, 40" wide \$ 9.60
 WEFT COST PER YARD, 38" wide 6.15
 =====
 Fabric cost per yard----- \$15.75

5/2 NATURAL, MERCERIZED PIMA COTTON:

Raised in Arizona, this was sent to be carded and combed in Georgia, sent to 2 other plants before I saw it in a Mercerizing Co. There it is mercerized and combed and wound on cones, and shipped to Japan to be knit into sweaters.



drafts and designs

a guide for 5 to 12 harness weaves

VOLUME 33, Number 10, June, 1991.

RIPPLES OF COLOR:

Once again, this is a Mayo Twill or a Campbell Twill. I wanted to show you what extremely different effects one can achieve, using different weft threads and different treadlings on this set-up. It is a surprisingly firm fabric and would make an outstanding jacket or coat material.

WARP:

In our warp, we have 4 colors of our 2/12's or 3/18's worsted, and there are 8 threads of each color. We have this high quality worsted wool in stock in about 24 colors all the time. The colors are as follows:

- X - 3/18's worsted, Dark Navy
- O - 3/18's worsted, Grenadier Blue
- A - 3/18's worsted, Forest Green
- B - 3/18's worsted, Ranger Green

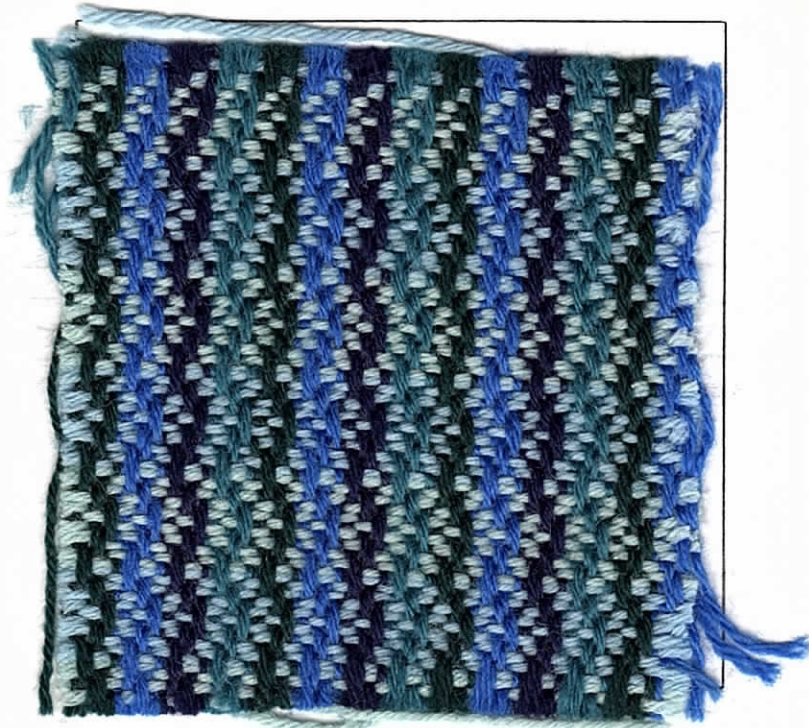
WEFT:

In our weft, we used two colors of our 13-1/4 / 4 ply SUPERWASH WOOL. The two colors are # 7, Nil, and # 171, Aqua. This yarn is machine washable, and we import it from England. It has about 1800 to 1850 yards per lb. It comes on about 1 lb. cones, and we have some 30 colors in stock all the time.

REED USED:

We used a 16 dent reed, 2 ends per dent, or 32 ends per inch, and it was double sleyed, 2 ends per dent. We did this deliberately, trying to make a firmer and more practical fabric.

SAMPLE:



TIE-UP DRAFT:

8			X			X	X	X	
7	X			X			X	X	
6	X			X	X	X			
5		X			X	X	X		
4		X	X	X			X		
3			X	X	X			X	
2		X	X			X			X
1		X	X	X			X		
		1	2	3	4	5	6	7	8

DRAFTS AND DESIGNS:

Published monthly, (except July and August), by Robin & Russ Handweavers, 533 North Adams St., McMinnville, Oregon, 97128.

SUBSCRIPTIONS:

are \$10.00 per year. The Canadian subscriptions are \$15.00 per year, and the foreign subscriptions are \$15.00 per year. It now costs 52¢ each to send to Canada, and 67¢ each to send them abroad. Back issues or single copies are \$1.25 each, plus postage. All subscriptions start with the September issue. If you subscribe after September, all issues from September on will be sent to you.

VOLUME 33, Number 10, JUNE, 1991.

THREADING DRAFT:

B	A	O	X	8
B	A	O	X	7
B	A	O	X	6
B	A	O	X	5
B	A	O	X	4
B	A	O	X	3
B	A	O	X	2
B	A	O	X	1

KEY TO COLORS IN THREADING DRAFT:

- X - 3/18 worsted, Dark Navy
- O - 3/18's worsted, Grenadier Blue
- A - 3/18's worsted, Forest Green
- B - 3/18's worsted, Ranger Green

TREADLING SEQUENCE:

The treadling for this sample is completely different than one would expect for an 8 harness draft. It is one that we worked out ourselves.

Treadle: 6,5,4,3,2,1,2,3,4,5,6 with the # 7, Nil, and I think this should be # 7 Nile, and that they left the (e) off the word on the color card. Then treadle, 6,5,4,3,2,1,2,3,4,5,6 with # 171, Aqua. Repeat this over and over.

Yes, there is one point where the two colors do come together, and make a double thread, and we deliberately left it there.

This weft is the superwash worsted yarn, which we stock in about 30 colors

MORE ABOUT THE PATTERN:

This fabric does not look too firmly woven, but if you will touch it, and try to pull it apart, you will see that it is much more durable than one would expect. The reason for this is that we deliberately set our warp much closer than usual, so that we could obtain this effect. Also, I'm sure many more interesting treadlings could be worked out on this fabric. I want to try it myself.

MORE ABOUT THE THREADS USED:

The weft is 13-1/4 /4 ply, and it has about 1800 yards per lb., comes on 1 lb. cones, and is \$24.00 per lb. We have about 35 to 40 colors in stock.

The 3/18's and 2/12's worsted, we have about 22 to 24 colors on hand. It has 3360 yards per lb., is \$24.00 lb.

It comes on about 1/2 lb. cones or slightly less.

COST OF THE FABRIC:

Our warp was 15 yards, 40" wide, and it took 1-1/2 lbs. of each of 4 colors. Total warp cost was \$144.00 and the cost per yard was \$9.60 per yard. In the weft, in 5-1/2 yards, we used 1 lb. 6 oz. of each of the two superwash yarns. Cost was \$66.00. The cost per yard comes to \$12.00 yd.

warp cost per yard, 40" wide \$9.60
weft cost per yard, 38" wide 12.00
FABRIC COST PER YARD-----\$ 21.60

We have 35 to 40 colors of Superwash in stock all the time.