

drafts and designs

a guide for 5 to 12 harness weaves

VOLUME 34, Number 2, October, 1991:

GOURMET RED'S & A TOUCH OF BLACK:

This 8 harness imitation damask turned out to be quite beautiful in a full table-cloth. A beautiful blend of colors in Ramie.

WARP:

Four (4) colors of 16/2 RAMIE, were used in the warp. The colors as on our sample sheets are:

- X - 16/2 Ramie, Black
- O - 16/2 Ramie, Scarlet Red
- B - 16/2 Ramie, Rio del Rose
- A - 16/2 Ramie, Old Brick Red

WEFT:

The same 4 colors of Ramie, used in the warp was also used in the weft.

REED USED:

A 10 dent reed was used, and it was double-sleyed, 2 ends per dent, or 20 ends per inch.

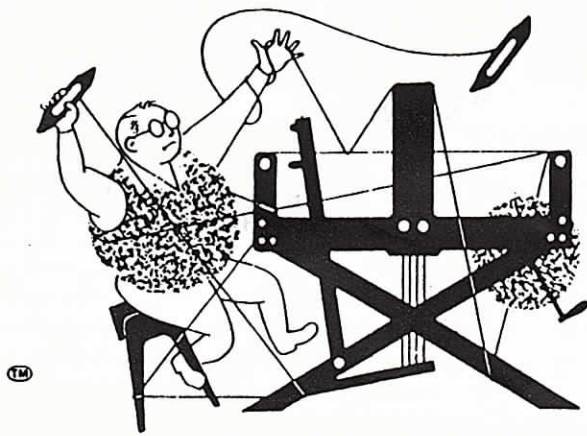
THREADING DRAFT:

8		O			O	O	O	O	
7		O			O	O	O	O	
6	O	O			O	O	O	O	
5	O	O			O	O	O	O	
4		A	A				A	A	
3		A	A				A	A	
2		A	A				A	A	
1		A	A				A	A	

SAMPLE:



		End							
8				O			O	O	O
7				O			O	O	O
6				O			O	O	
5				O			O	O	
4	X	X				B			
3	X	X				B			
2	X	X				B			
1	X	X				B			



drafts and designs

a guide for 5 to 12 harness weaves

VOLUME 34, Number 2, October, 1991:

GOURMET RED'S & A TOUCH OF BLACK:

This 8 harness imitation damask turned out to be quite beautiful in a full table-cloth. A beautiful blend of colors in Ramie.

WARP:

Four (4) colors of 16/2 RAMIE, were used in the warp. The colors as on our sample sheets are:

- X - 16/2 Ramie, Black
- O - 16/2 Ramie, Scarlet Red
- B - 16/2 Ramie, Rio del Rose
- A - 16/2 Ramie, Old Brick Red

WEFT:

The same 4 colors of Ramie, used in the warp was also used in the weft.

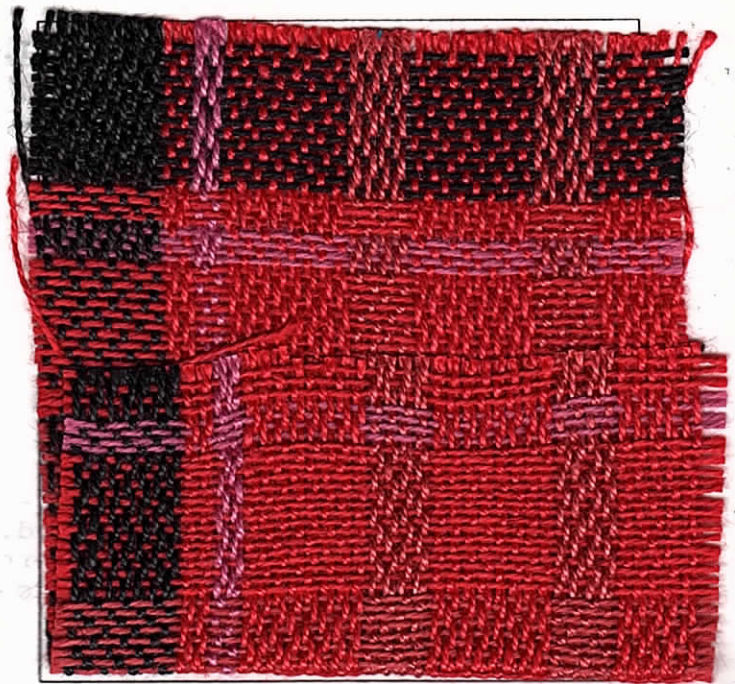
REED USED:

A 10 dent reed was used, and it was double-sleyed, 2 ends per dent, or 20 ends per inch.

THREADING DRAFT:

8		O		O	O	O	O		O	O	O	O	O		O	
7		O		O	O	O	O		O	O	O	O	O		O	
6	O	O		O	O	O	O		O	O	O	O	O		O	
5	O	O		O	O	O	O		O	O	O	O	O		O	
4		A	A					A	A					B	X	X
3		A	A					A	A					B	X	X
2		A	A					A	A					B	X	X
1		A	A					A	A					B	X	X

SAMPLE:



Start

8				O		O	O	O
7				O		O	O	O
6				O		O	O	
5				O		O	O	
4	X	X				B		
3	X	X				B		
2	X	X				B		
1	X	X				B		

End

DRAFTS AND DESIGNS:

Published monthly, (except July and August), by Robin & Russ Handweavers, 533 North Adams St., McMinnville, Oregon, 97128.

SUBSCRIPTIONS:

are \$10.00 per year. The Canadian subscriptions are \$15.00 per year, and the foreign subscriptions are \$15.00 per year. It now costs 52¢ each to send to Canada, and 67¢ each to send them abroad. Back issues or single copies are \$1.25 each, plus postage. All subscriptions start with the September issue. If you subscribe after September, all issues from September on will be sent to you.

VOLUME 34, Number 2, September, 1991.

TIE-UP DRAFT:

8			O	O		O		O		
7				O	O	O				O
6			O	O	O		O			
5			O		O	O				O
4				O			O	O		O
3						O		O	O	O
2			O				O	O	O	
1					O		O	O	O	

1 2 3 4 5 6 7 8

TREADLING SEQUENCE:

Please note that the treadling sequence is exactly as it is threaded. There are 96 shots in each pattern repeat. Here is the sequence, in groups according to color.

1. Treadle 1,2,3,4,1,2,3,4, black
 2. Treadle 5,6,7,8, Scarlet Red
 3. Treadle 1,2,3,4, Rio del Rose
 4. Treadle 5,6,7,8,5,6,7,8,5,6,7,8, 5,6,7,8 in Scarlet
 5. Treadle 1,2,3,4,1,2,3,4 Brick Red
 6. Treadle 5,6,7,8,5,6,7,8,5,6,7,8, 5,6,7,8, in Scarlet Red
 7. Treadle 1,2,3,4,1,2,3,4, Brick Red.
 8. Treadle 5,6,7,8,5,6,7,8,5,6,7,8, 5,6,7,8, Scarlet Red.
 9. Treadle 1,2,3,4, Rio del Rose
 10. Treadle 5,6,7,8, Scarlet Red
 11. Treadle 1,2,3,4,1,2,3,4, Black.
- End of one complete pattern repeat. Do repeat over & over as desired.

COST OF THE THREADS USED:

We have 28 colors of the ramie, 16/2 lea on hand right now. It has 2400 yards per lb., and the price is \$24.00 per lb. Our 600 yard tubes of this are \$6.00 each. These are the best dyes available for the colors we have chosen. All of this yarn was spun to order for us, and dyed to order in Switzerland.

CHARACTERISTICS of RAMIE:

Ramie has many superior qualities. It resists rot, it resists mildew, it will not stretch, it will not shrink, and it is stronger when wet than when dry. It is softer feeling, easier to handle, and easier to warp and weave with than is linen. It is a member of the BAST family of fibers, as is linen, hemp, and jute. It is superior to linen in almost every physical and chemical text. Of the 4 bast fibers, ramie, flax, hemp, and jute, RAMIE ranks first in durability, strength, length of fibre cells, fineness, and holds color better than any of the 4. It is called the Queen of textile fibers. It does not wrinkle as much as does linen. We have been using it for 30 years, and will continue to stock it and sell it.

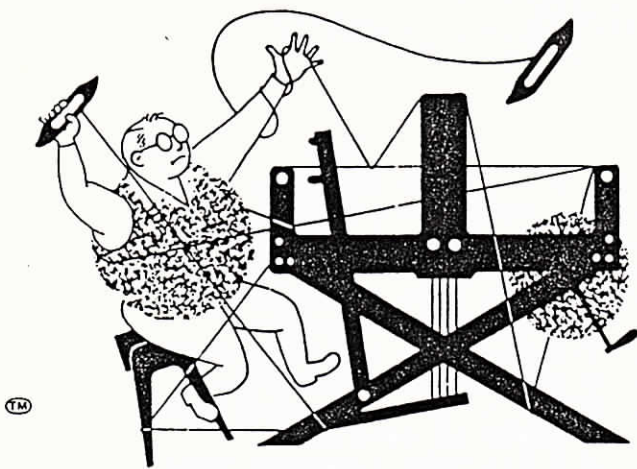
COST OF THE FABRIC:

In our 15 yard warp, we used 6 lbs. 8 oz. of 16/2 ramie for our 42" wide warp. Our total warp cost is \$156.00, so the cost per yard, for 42" wide warp is \$10.40.

In the weft, we used 2 lbs. 2-1/2 oz. of ramie for 6 1/2 yards of fabric. Thus, it took slightly less than 5 1/2 oz. per yard of finished weft. At \$24.00 per lb., the weft cost per yard comes to about \$8.10 per yard.

WARP COST PER YARD:	42" wide	\$10.40
WEFT COST PER YARD,	40" wide	8.10
=====		
FABRIC COST PER YARD,		\$ 18.50

In our larger than usual sample, we try to show you one complete block of the pattern, so you can have an idea of what a table-cloth would be like out of this fiber.



drafts and designs

a guide for 5 to 12 harness weaves

VOLUME 34, NUMBER 4, DECEMBER, 1991

CLOUDS AT SUNSET:

This interesting 8 harness Summer and Winter weave reminds us of clouds in the evening at sunset, with puffs of clouds in odd shapes.

WARP:

Our warp is the 20/2 Super Luster Cotton, which is comparable to an Egyptian Cotton, in Fiesta Color.

WEFT USED:

Two threads are used in the weft. One is a metallic thread, sort of opalescent natural, where glints of other colors show up in the thread. This was the tabby thread used for the whole pattern.

The 2nd thread was an English 2 ply tapestry wool, which comes on 4 oz. skeins, and which sells for about \$28.00 per lb. 175 yards per skein.

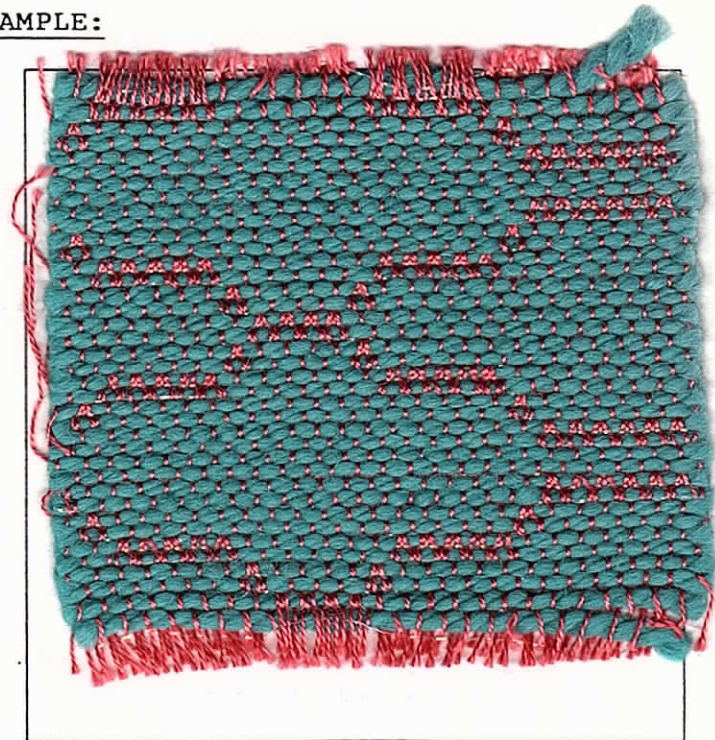
REED USED:

A 15 dent reed was used, and it was double-sleyed, 2 ends per dent, or 30 threads per inch.

THREADING DRAFT:

8					o o						
7				o o		o o					
6			o o				o o				
5		o o						o o			
4	o o								o o		
3										o o	
2	o	o	o	o	o	o	o	o	o	o	o
1	o	o	o	o	o	o	o	o	o	o	o
	1x	5x	1x	6x	1x	6x	1x	5x	1x	4x	

SAMPLE:



TIE-UP DRAFT:

8			o							o
7			o						o	
6			o				o			
5			o		o					
4			o	o						
3			o	o						
2	o	o								
1	o	o								
	X	Y	A	B	1	2	3	4	5	6

DRAFTS AND DESIGNS:

Published monthly, (except July and August), by Robin & Russ Handweavers, 533 North Adams St., McMinnville, Oregon, 97128.

SUBSCRIPTIONS:

are \$10.00 per year. The Canadian subscriptions are \$15.00 per year, and the foreign subscriptions are \$15.00 per year. It now costs 52¢ each to send to Canada, and 67¢ each to send them abroad. Back issues or single copies are \$1.25 each, plus postage. All subscriptions start with the September issue. If you subscribe after September, all issues from September on will be sent to you.

VOLUME 34, No. 4, DECEMBER, 1991:

TREADLING SEQUENCE:

Please note that there are 40 shots in each complete pattern repeat. There are 20 tabby or plain weave shots all in metallic, and there are 20 shots of pattern in this sample, and these 20 pattern shots are all done with the english tapestry wool. Here is the treadling sequence:

1. X & 1 - jade tapestry wool
2. A - tabby in metallic
3. Y & 1 - jade tapestry wool
4. B - tabby in metallic
5. X & 2 - jade tapestry wool
6. A - tabby in metallic
7. Y & 2 - jade tapestry wool
8. B - tabby in metallic
9. X & 3 - jade tapestry wool
10. A - tabby in metallic
11. Y & 3 - jade tapestry wool
12. B - tabby in metallic
13. X & 4 - jade tapestry wool
14. A - tabby in metallic
15. Y & 4 - jade tapestry wool
16. B - tabby in metallic
17. X & 5 - jade tapestry wool
18. A - tabby in metallic
19. Y & 5 - jade tapestry wool
20. B - tabby in metallic
21. X & 6 - jade tapestry wool
22. A - tabby in metallic
23. Y & 6 - jade tapestry wool
24. B - tabby in metallic
25. X & 5 - jade tapestry wool
26. A - tabby in metallic
27. Y & 5 - jade tapestry wool
28. B - tabby in metallic

29. X & 4 - jade tapestry wool
30. A - tabby in metallic
31. Y & 4 - jade tapestry wool
32. B - tabby in metallic
33. X & 3 - jade tapestry wool
34. A - tabby in metallic
35. Y & 3 - jade tapestry wool
36. B - tabby in metallics
37. X & 2 - jade tapestry wool
38. A tabby in metallic
39. Y & 2 - jade tapestry wool
40. B - jade tapestry wool

End of one complete pattern repeat.
Do repeat over and over as desired.

COST OF THE THREADS USED:

Our warp was a 20/2 super luster cotton, which may be called egyptian cotton. At 30 per inch, and is on sale at \$15.00 per lb., or \$7.50 per tube while it lasts. In our weft, we used 2 threads. One is an opalescent 1/69 metallic thread which is \$26.00 per lb., and comes on about 2 lb. cones.

The jade tapestry wool, comes in 4 oz. skeins, has approximately 175 yards per skein, and is \$6.95 per skein. We have about 30 colors in this wonderful tapestry wool. It is a worsted yarn, and is spun so that when it is cut, the yarn does not tend to untwist like some of the wool yarns tend to do.

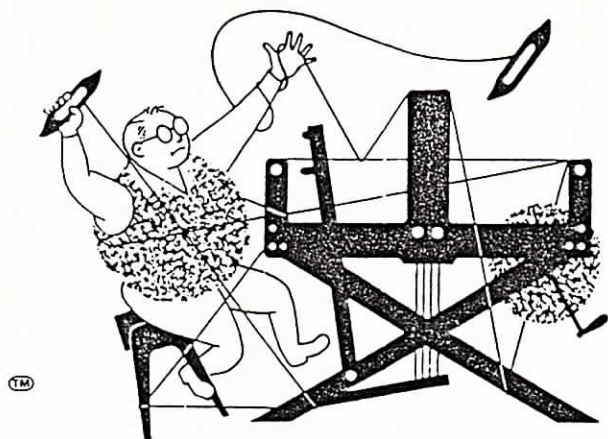
COST OF THE FABRIC:

In our warp, it took 2 lbs. 4 oz. of the 20/2 super luster Fiesta cotton. Our warp was 42" wide. At \$15.00 per lb., the total warp cost comes to \$33.75, or the cost per yard comes to \$2.25 per yard.

In the weft, we used 3 oz. of the Abalone Prism supported metallic, and this cost was \$4.89. The other yarn, the jade tapestry yarn, in eight (8) yards, we used 6 lbs. 4 oz. It cost \$138.56 or the cost per yard was \$17.32.

WARP COST PER YARD. --42" wide \$ 2.25
WEFT COST PER YARD, 40" wide \$22.21

FABRIC COST PER YARD COMES TO \$24.46



drafts and designs

a guide for 5 to 12 harness weaves

VOLUME 34, Number 7, March, 1992

CUDDLE COMFORT:

Our sample this month is a 6 harness weave, and the fabric was planned for baby-blankets. It is made of machine washable wool, so there is no fear of shrinking.

THREADING DRAFT:

8											
7											
6	0	0			x	x					
5	0	0	0			x	x	x			
4	0	0				x	x				
3			0	0				x	x		
2				0	0	0			x	x	x
1				0	0					x	x

KEY TO COLORS IN THE WARP:

x - superwash wool, color primrose
0 - superwash wool, color nile

WARP:

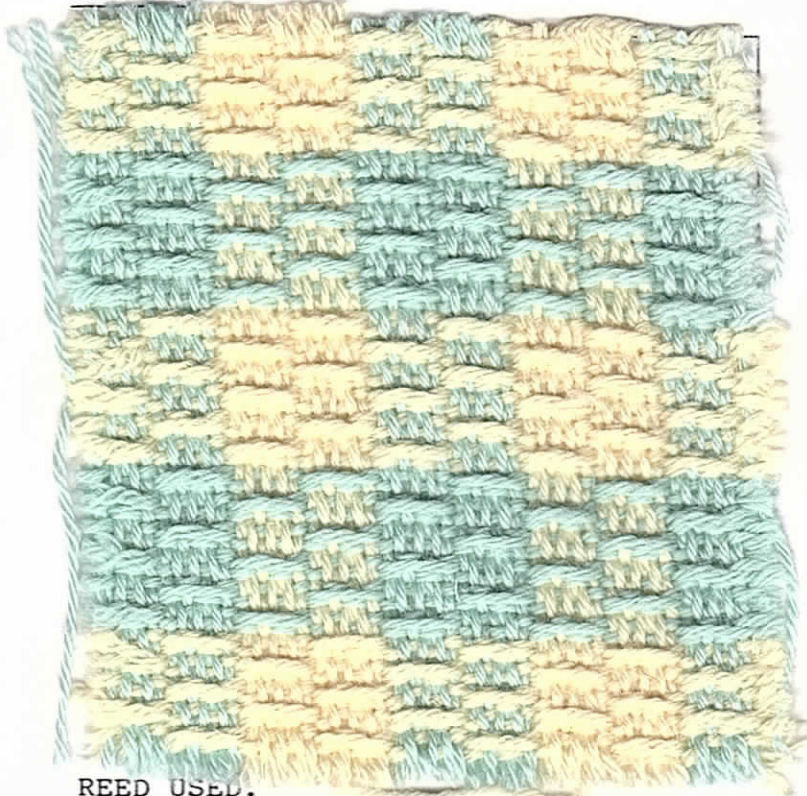
In our warp, we used 2 colors of the superwash wool, and both of these yarns had 2 names, so we will give both.

x - superwash wool, primrose & light yellow
0 - superwash wool, nile or lt. grn.

WEFT:

We used the same two threads in the weft that were used in the warp. Lt. Yellow and Nile.

SAMPLE:



REED USED.

An 8 dent reed was used, and it was double-sleyed, 2 ends per dent or 16 ends per inch.

TIE-UP DRAFT:

6				x		x	x		x	
5						x	x	x	x	
4	x					x	x			x
3			x	x				x	x	
2		x	x	x						x
1		x	x			x				x
		1	2	3	4	5	6	7	8	
										A B

DRAFTS AND DESIGNS:

Published monthly, (except July and August), by Robin & Russ Handweavers, 533 North Adams St., McMinnville, Oregon, 97128.

SUBSCRIPTIONS:

are \$10.00 per year. The Canadian subscriptions are \$15.00 per year, and the foreign subscriptions are \$15.00 per year. It now costs 52¢ each to send to Canada, and 67¢ each to send them abroad. Back issues or single copies are \$1.25 each, plus postage. All subscriptions start with the September issue. If you subscribe after September, all issues from September on will be sent to you.

VOLUME 34, Number 8, April, 1992:

TREADLING SEQUENCE:

The treadling is a very simple one, and I will give it herewith: It does come in two parts, one part for each color.

1. Treadle 1,2,3,4,5,6--three times using lt. yellow or primrose.
2. Treadle 1,2,3,4,5,6--three times using Nile or light green wool.

End of one complete pattern. Repeat over & over as desired.

MORE ABOUT THE SUPERWASH WOOL:

We had stocked the superwash wool for 8 to 10 years, but now they have appointed a distributor in the U.S.A., and I have to order from them. However, this exclusive distributor has raised the price so much, that he is wholesaling it at more than we have been retailing it, so temporarily, we cannot get any more. However, we had the project on the loom, so we did go ahead and finish the project.

This wool is a size 4/13-1/2 worsted and has about 1800 yards per lb. It comes normally on about 1 lb. 1 oz. cones, and we have been retailing it for \$24.00 per lb. I believe the new wholesale price from the exclusive distributor is about \$26.00 per lb., so you can understand the dilemma about obtaining it. However, we have a friend who stocks it in England, and he states he will give us a better price if we order in quantity, and we

do hope to eventually obtain it, but it will be 2 or 3 more months before the details are worked out. Meanwhile, we do have a limited stock. We are out of about 3 of the 30 colors. We do hope that in about 2 to 3 months, we will have arrangements worked out, so that we will have all the colors.

COST OF THE FABRIC:

We did a 15 yard warp, 40" wide, and it took 5-1/3 lbs. of the superwash wool for our warp. At \$24.00 per pound, this comes to \$128.00 total cost, or the cost per yard, for the 40" wide warp came to \$8.54. And in the weft, we used 2 lbs. 14 oz. of each in the weft for 6-1/2 yards, making the total weft cost for 6-1/2 yards come to \$138.00, or the cost per yard for the weft came to \$21.30 per yard. So, you can see that these blankets cost quite a bit as it come to \$29.84 per square yard.

WARP COST PER YARD -----	\$8.53
WEFT COST PER YARD -----	21.30
=====	
FABRIC COST PER YARD-----	\$29.83

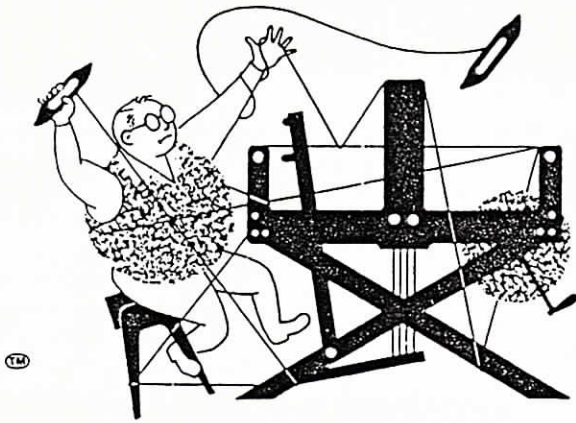
MORE ABOUT WIDTH AND LENGTH:

We set up our fabric, 40" wide on the loom. When taken off the loom and the fabric was relaxed, it was only -36--3/4" wide.

In our warp, and measuring under tension, our length of fabric, it was 6 yards, 18" long. However, after allowing it to relax and then measuring it, we found that it came down to 6 yards, 19" in length.

As this is a machine washable wool, there should be almost no shrinkage in length or width, when being washed. Also, if anyone is allergic to wool, this one is excellent to use, as it is made so that it is anti-tickle, and also, has a wonderfully soft hand. It should not itch or irritate anyone who is allergic to wool.

SUPERWASH WOOL: On about 1 lb. 1 oz. cones. 25 out of 30 stock colors in stock. Price is \$24.00 per lb. Sold by the cone only. 1850 yards per lb. ROBIN & RUSS HANDWEAVERS, 533 No. Adams St., McMinnville, Oregon, 97128.



drafts and designs

a guide for 5 to 12 harness weaves

VOLUME 34, Number 8, April, 1992

KITCHEN COMFORT:

This pattern was planned to be used to make kitchen dish towels. We tried to use threads that would be absorbent, and yet durable, and this is the result.

WARP:

There are two colors of cotton used in the warp, and each of these is a different size.

- X - 14/2 Durene cotton, color Mint
- O - 10/2 Durene Cotton, Turquoise

WEFT:

Two threads were used in the weft. One was a cotton flake, fairly heavy, with 1400 yards per lb. And the color was a Light Aqua.

The other thread used in the weft was a 5/2 mercerized cotton in a color called "Flesh".

REED USED:

A 12 dent reed was used, and it was double-sleyed, 2 ends per dent, or 24 ends per inch.

SAMPLE



8	o	o	o	o	X	o	o	X	
7	o	o	o	o	X	o	o	X	
6	o	o	o	o	X	o	o	X	
5	o	o	o	o	X	o	o	X	
4	o	o	o	o	X	o	o	X	
3	o	o	o	o	X	o	o	X	
2	o	o	o	o	X	o	o	X	
1	o	o	o	o	X	o	o	X	

KEY TO COLORS IN THREADING DRAFT

- O - 10/2 Durene, Lt. Turquoise
- X - 14/2 merc. cotton, Mint.

DRAFTS AND DESIGNS:

Published monthly, (except July and August), by Robin & Russ Handweavers, 533 North Adams St., McMinnville, Oregon, 97128.

SUBSCRIPTIONS:

are \$10.00 per year. The Canadian subscriptions are \$15.00 per year, and the foreign subscriptions are \$15.00 per year. It now costs 52¢ each to send to Canada, and 67¢ each to send them abroad. Back issues or single copies are \$1.25 each, plus postage. All subscriptions start with the September issue. If you subscribe after September, all issues from September on will be sent to you.

VOLUME 34, Number 8, April, 1992.

TREADLING SEQUENCE:

Please note that there are 64 weft shots in each complete pattern repeat. The treadling is actually divided into 4 major parts, and I will list these with the number of repeats of each.

- Treadle 8,7,6,5,4,3,2,1, Flesh Perle 5. one time only
- 8,7,6,5,4,3,2,1, Lt. Aqua, flake, repeat 2 times.
- 8,7,6,5,4,3,2,1, Flesh Perle 5. one time only.
- 8,7,6,5,4,3,2,1, Lt. Aqua, Repeat 4 times.
- End of one complete pattern. repeat (4) four times.

END OF ONE COMPLETE PATTERN REPEAT. Do repeat over and over as desired.

TIE-UP DRAFT:

8		X			X	X	X			
7			X		X	X		X		
6				X	X		X	X		
5					X		X	X		
4		X	X	X		X				
3		X	X		X		X			
2		X		X	X			X		
1			X	X	X			X		
			1	2	3	4	5	6	7	8

COST OF THE THREADS USED:

The two (2) different sized cottons in the warp are both \$8.00 per lb. One is 14/2 cotton, Mint color One is 10/2 cotton, Lt. Turquoise.

In the weft, we used a flake cotton with 1400 yards per lb., in Light Turquoise, and the other was a perle 5 merc. cotton in FLESH color. The Lt. Turquoise cotton flake is \$6.00 per lb., and the perle cotton is \$16.00 per lb.

COST OF THE FABRIC:

In the warp, we used 11 oz. of the 14/2 mint, and this cost \$5.50, and the 10/2 Durene Turquoise, we used a total of 2 lbs. 12 oz., and this came to \$22.00. Our total warp cost was \$27.50 for a 15 yard warp, 40" wide. Cost per yard was \$1.84 per yard.

We wove 6-1/2 yards and it took 10 oz. of perle 5, flesh, cost \$5.00 and it took 1 lb. 6 oz. of the cotton flake, or \$8.25. The total weft cost was \$13.25 or the cost per yard was \$2.05 per yard.

WARP COST PER YARD, 40" wide \$1.84
WEFT COST PER YARD, 38" wide \$2.05

===== Fabric cost per yard comes to \$3.89

TOWEL INFORMATION:

For towels, I would suggest a warp of 26" width, and it weaves down to about 24". For length, I would suggest 36" plus hems, or I would suggest a large hem of 1-1/2 to 2" on each end, so I would weave them 40".

HELPFUL HINT:

Do not weave with the warp too tight. The cotton flake will pack in better if the warp is not too tight, and you will have more surface for absorbency. And that is the purpose of kitchen dish towels, to absorb, and dry the dishes.

HOW I PLANNED THESE TOWELS:

I decided on an 8 harness weave, and I drew a tie-up first that I thought would give more absorbency. Then I threaded a straight twill, and figured out what would be the best weft for absorbency. I tried several colors and selected this one for weft.