

drafts and designs

a guide for 5 to 12 harness weaves

VOLUME 35, Number 3, NOVEMBER, 1992.

A HOLIDAY TABLECLOTH:

This 8 harness pattern is an old Finnish Pattern, which we have revised slightly from the original. It is easy to weave, and would make a very nice Christmas Season tablecloth.

WARP:

Our warp is a size 24/2 mercerized natural, durenne cotton. It came to us on about 3 lb. cones, and we have a special price on this of \$6.00 per lb. It has 10,080 yards per lb. A tremendous buy.

WEFT:

Our weft on this is an 8/2 mercerized cotton, TOMATO RED, which has 3360 yards per lb. It came on large, 2 to 3 lb. cones, and we can wind off 1/2 lb. or 1 lb. tubes of either or both of these. This Tomato Red cotton is \$8.00 per lb.

REED USED:

We used a 15 dent reed, 2 ends per dent or 30 ends per inch.

THREADING PLAN for 40" wide TABLE-CLOTH

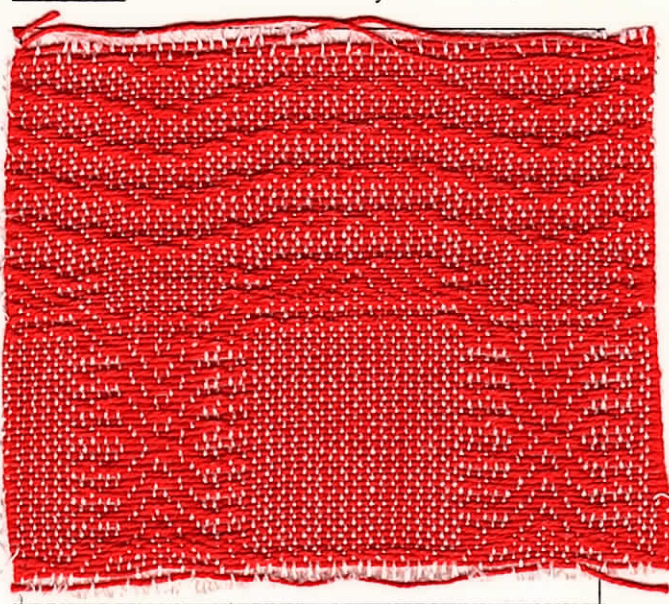
1. Thread A to B 5 times-----40 threads
2. Thread B to C 18 times ----1116
3. Thread C to D --1 time ---- 01
4. Thread D to E - 5 times--- 40
5. Thread E to F - 1 time ---- 03

Total # of threads in 40"-----

1200

Designed by Russell Groff
Woven by Joan Otte

SAMPLE:



TIE-UP DRAFT:

8		X		X		X				X
7	X		X		X					X
6		X		X				X		X
5	X		X				X		X	
4		X				X		X		X
3	X				X		X		X	
2				X		X		X		X
1			X		X		X		X	
	1	2	3	4	5	6	7	8	9	10

DRAFTS AND DESIGNS:

Published monthly, (except July and August), by Robin & Russ Handweavers, 533 North Adams St., McMinnville, Oregon, 97128.

SUBSCRIPTIONS:

are \$10.00 per year. The Canadian subscriptions are \$15.00 per year, and the foreign subscriptions are \$15.00 per year. It now costs 52¢ each to send to Canada, and 67¢ each to send them abroad. Back issues or single copies are \$1.25 each, plus postage. All subscriptions start with the September issue. If you subscribe after September, all issues from September on will be sent to you.

VOLUME 35, Number 3, November, 1992.

THREADING DRAFT:

	C	B	A
8	X	X X	X
7	X X	X X	X
6	X X X X	X X X X	X
5	X X X X	X X X X	X
4	X X X X X X X X X X X X X		X
3	X X X X X X X X X X X X X		X
2	X X X X X X X		X
1	X X X X X X X		X
	-----B to C - 18 times-----		5 times

TREADLING SEQUENCE:

There are 99 shots in each complete pattern repeat. As the repeats seem to be in groups of 4's once in a while 7 shots, I will give the treadling to you in rows of 8 or sometimes 7 shots, to make it easier to follow.

1. Treadle 1,2,3,4,1,2,3,4
2. Treadle 3,4,5,6,3,4,5,6,
3. Treadle 5,6,7,8,5,6,7,8,
4. Treadle 5,6,7,8,5,6,7,
5. Treadle 8,7,6,5,8,7,6,5,
6. Treadle 8,7,6,5,8,7,6,5,
7. Treadle 6,5,4,3,6,5,4,3,
8. Treadle 4,3,2,1,4,3,2,1,
9. Treadle 8,7,6,5,4,3,2,1,
10. Treadle 8,7,6,5,4,3,2,1,
11. Treadle 8,7,6,5,4,3,2,1,
12. Treadle 8,7,6,5,4,3,2,1,
13. Treadle 8,7,6,5.

End of one complete pattern repeat. Do repeat over & over as desired.

	F	E	D	C
8		X		X
7		X		
6		X		
5		X		
4		X		
3	x		X	
2	x		X	
1	x		X	
	1x	5 times		1x

COST OF THE FABRIC:

A table cloth, 39" wide x 96" long costs \$10.03 for both the warp and the weft thread.

The warp cost per yard is 80¢ per yd. The weft cost per yard is \$2.85 per yard, so this is a very reasonable fabric to weave.

WARP COST PER YARD, 40" wide	\$.80
WEFT COST PER YARD-----	\$2.85
FABRIC COST PER YARD, 39-1/2"	\$3.65

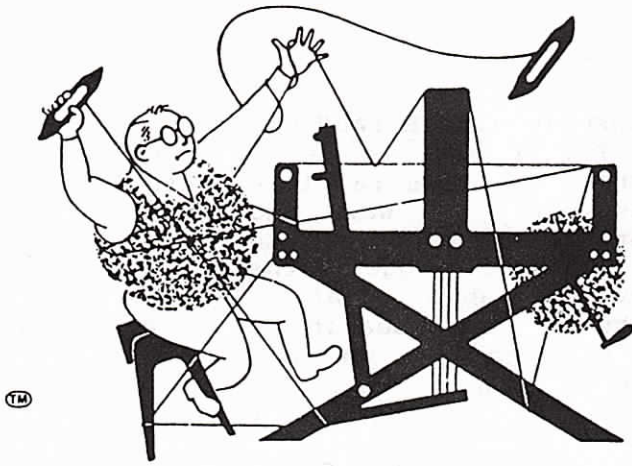
COST OF THE THREADS USED:

The 24/2 Natural, Mercerized Durene cotton came on 2-1/2 lb. cones. It has 10,080 yards per lb., and we have a special price on it of \$6.00 per lb. We can wind off 1/2 lb. or 1 lb. tubes. The 8/2 Mercerized Red Perle cotton is on about 2-1/2 lb. cones. It is \$8.00 per lb. while it lasts. It too, can be wound off onto 1/2 lb. or 1 lb. tubes.

MORE ABOUT A TABLE-CLOTH:

If you set up the loom as per the directions here, it will weave about 39" wide. I would suggest making it either 40" x 60" in size or 40" x 80" in size. Of course, it could be longer, depending upon the size of the table you want to use it on.

drafts and designs



a guide for 5 to 12 harness weaves

VOLUME 35, Number 5, January, 1993:

A NORWEGIAN TRADITION:

This table cloth is one that I wove over 30 years ago, and I have always remembered it with pleasure. We will give you here the complete plan for the set-up and weaving of a table-cloth 40" wide by approximately 70" long.

WARP:

Our warp is a 5/2 natural mercerized Pima cotton. It has 2100 yards per lb., and the price is \$9.60 per lb.

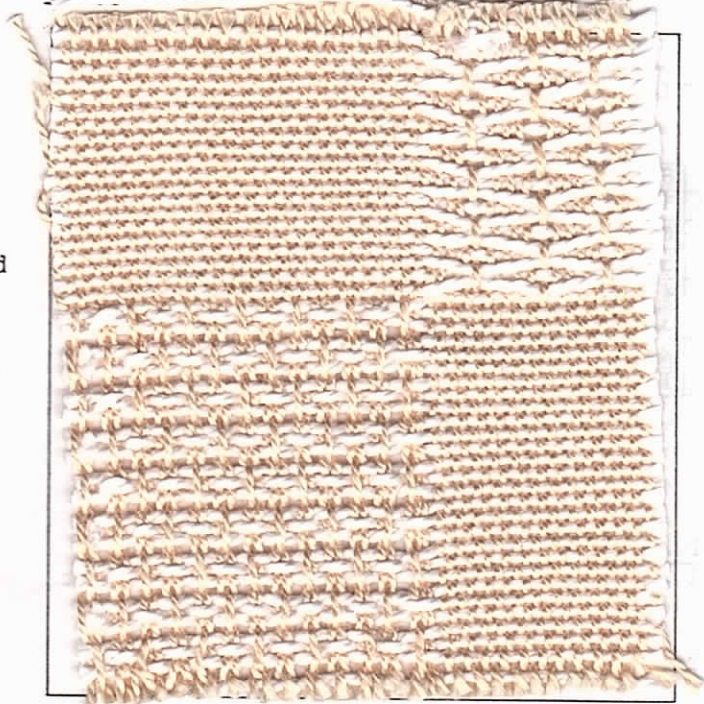
WEFT:

Our weft is the 3/2 mercerized, bleached white perle 3 cotton, which has 1260 yards per lb., and sells for \$16.00 per lb.

REED USED:

A 10 dent reed was used, and it was double-sleyed, 2 ends per dent, or 20 ends per inch.

SAMPLE:



THREADING DRAFT:

	C	B	A
8		X	
7	X		
6	X X X X X X	X X X X X X	
5	X X X	X X X X X X	X X X
4		X X X X	X X X X
3		X X X X X X	X X X X
2		X X X X X X	X X X X X X
1		X X X X	X X X X

DRAFTS AND DESIGNS

Published monthly, (except July and August), by Robin & Russ Handweavers, 533 North Adams St., McMinnville, Or., 97128

SUBSCRIPTIONS:

are \$10.00 per year. The Canadian subscriptions are \$15.00 per year, and the foreign subscriptions are \$15.00 per year. It now costs us 67¢ each to send issues abroad. Back issues or single copies are \$1.25 each, plus 29¢ postage. All subscriptions start with the September issue. If you subscribe after September, all issues from September on will be sent to you.

volume 35, Number 5, January, 1993:

TIE-UP DRAFT:

8	X		X		X		X
7			X		X	X	X
6	X		X				X
5			X		X		X
4	X	X			X		X
3	X		X				X
2			X		X	X	X
1				X	X		X

1 2 3 4 5 6 7

PLAN FOR A TABLE-CLOTH:

- Right Selvage, 17 threads that are threaded 1,2,3,4,5,6,7,8, 1,2,3,4,5,6,7,8,1,-----17
- Thread A to C, eleven times--726
- Thread A to B - one time-----39
- Thread the last 18, 3,4,5,6,7,8, 1,2,3,4,5,6,7,8,1,2,3,4-----18

Total number of threads comes to 800

WEAVING PLAN

- Treadle 6,7,6,7 for 4 inches.
 - Treadle 2,1,2,3,4,3 -- 5 times
 - Treadle 5,6,5,3, five times.
 - Repeat 2 and 3 for desired length
 - Treadle 2,1,2,3,4,3, 5 times to balance the pattern.
- Treadle 6,7,6,7, for 4 inches hem.

MORE ABOUT THE FABRIC:

This sample is very easy to weave. The pattern is fairly easy to follow, and both the warp and weft threads are superior quality threads.

I would suggest that you use an even double beat, throwing the shuttle and beating with the shed open, changing to the next shed and beat again.

This pattern is traditional in both Norway and in Finland, and I have seen it in books from both countries. We wove about 6 yards extra, so that we can use this for table covers at conferences, where the tables are so badly damaged because of the 1001 staples used to fasten covers on them.

COST OF THE FABRIC:

We did a 15 yard warp, 40" wide, and it took 5-3/4 lbs. of the 5/2 Pima for the warp. At \$9.60 per lb., our total warp cost was \$55.20, and the cost per yard was \$3.68.

We wove 13-3/4 yards of fabric from our 15 yard warp. We used a perle 3 white cotton, which sells for \$16.00 per lb., and we used 6 lbs. 7 oz. of yarn in the weft, so our total weft cost came to \$103.00, or the cost per yard comes to \$7.50 for the weft.

WARP COST PER YARD, 40" wide 3.68

WEFT COST PER YARD, 39" wide 7.50

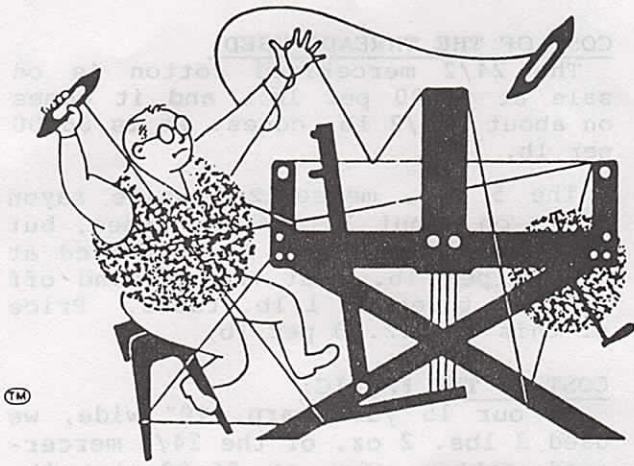
FABRIC COST PER 39" x 108" table cloth comes to \$33.54 per cloth.

CLASSIFIED ADVERTISEMENT:

SIX STRAND COTTON FLOSS IN COLORS:

We now have the 6 strand cotton floss on varying sized cones and tubes. We have light yellow, bright yellow, maize, orange, pale pink, light aqua, royal blue, black, pink, and natural. Also, wine, medium grey, and navy. AN EXCELLENT PRICE AT \$9.60 per lb. The regular price if you buy from a stock color card seems to be about \$24.00 per lb., so you can see this \$9.60 price is a good one. We used to sell this at \$8.00 per lb., several years ago, but this new lot cost us \$2.00 per lb. more than previously. 2080 yards per lb. Excellent for either warp or weft. ROBIN & RUSS HANDWEAVERS, INC., 533 No. Adams St., McMinnville, Oregon 97128.

drafts and designs



a guide for 5 to 12 harness weaves

VOLUME 35, Number 6, February 1993:

FINLAND'S HERITAGE:

This is one of the patterns given in the book, Hand-weaving patterns from Finland. I wove this fabric into table-cloths many years ago, and have revived the pattern again. It is an 8 harness, one shuttle weave, and very, very, easy to weave.

WARP:

Our warp is a size 24/2, Mercerized Cotton, Natural, with 10,080 yards per pound.

WEFT:

The weft is a perle 3 actually a 5 ply, mercerized perle rayon. It has about 1280 yards per lb.

REED USED:

We used a 15 dent reed and it was double-sleyed, 2 ends per dent, or 30 threads per inch.

SAMPLE:



THREADING DRAFT:

	D	C		B	A
8	8	8 8		8 8	8
7	7	7 7		7 7	7
6	6	6 6 6 6		6 3 6 6	6
5	5	5 5 5 5		5 3 5 5	5
4	4	4 4 4 4 4 4 4 4 4 4 4 4		4 4 4 4	4
3	3	3 3 3 3 3 3 3 3 3 3 3 3		3 3 3 3	3
2	2	2 2 2 2 2 2 2 2 2 2 2 2		2 2 2 2	2
1	1	1 1 1 1 1 1 1 1 1 1 1 1		1 1 1 1	1

DRAFTS AND DESIGNS:

Published monthly, (except July and August), by Robin & Russ Handweavers, 533 No. Adams St., McMinnville, Ore., 97128

SUBSCRIPTIONS:

are \$10.00 per year. Canadian and foreign are \$15.00 per year. Back issues in the USA, \$1.25 each + 29c pp. All subscriptions start with the September issue. If you subscribe after September, all issues from September on will be sent to you.

VOLUME 35, Number 6, February, 1993:

PLAN FOR A TABLE-CLOTH, 40" wide:

1. Thread one thread each, 7,8,--	02
2. Thread A to B 6 times -----	48
3. Thread B to C, 20 x 55 =	1100
4. Thread C to D 6 times-----	48
5. Thread one thread ea, 1,2 --	02
=====	
Total number of warp ends is	1200

TIE-UP DRAFT:

8		X	X	X					X	
7	X	X	X					X		
6		X	X				X	X		
5	X	X			X	X				
4		X			X	X	X	X		
3	X			X	X	X	X			
2			X	X	X	X	X	X		
1			X	X	X	X	X			
	1	2	3	4	5	6	7	8	9	10

This is the threading plan for a 40" wide table-cloth. As for the length of the cloth, you plan on weaving a hem on each end, and you weave 1 to 8 6 times on each end of the fabric. And then, you follow this main treadling for the body of the table-cloth.

AFTER TREADLING 1 to 8, 6 times, you then treadle this treadling for the main body.

1. Treadle 1,2,3,4, 2 times
2. Treadle 3,4,5,6, two times
3. Treadle 5,6,7,8, three times
4. Treadle 5,6,7, one time to balance
5. Treadle 8,7,6,5, four times
6. Treadle 6,5,4,3, two times
7. Treadle 4,3,2,1, two times
8. Treadle 8,7,6,5,4,3,2,1, 4 times
9. Treadle 8,7,6,5d, one time to balance. Repeat this over and over.

To balance pattern, treadle parts 1,2,3,4,5,6,7. Do not repeat part # 8, but treadle 1 to 8 six times to balance your pattern.

COST OF THE THREADS USED:

The 24/2 mercerized cotton is on sale at \$6.00 per lb., and it comes on about 2-1/2 lb. cones. It is \$6.00 per lb.

The 5 ply, mercerized white rayon comes on about 3 to 4 lb. cones, but we can wind it off. It is priced at \$12.00 per lb., but we can wind off 1/2 lb. tubes or 1 lb. tubes. Price of this is \$12.00 per lb.

COST OF THE FABRIC:

In our 15 yard warp, 40" wide, we used 2 lbs. 2 oz. of the 24/2 mercerized cotton warp at \$6.00 per lb. So, our total warp cost for 15 yards, 40" wide, comes to \$.38¢ per yard. In the weft, in 6-1/2 yards of finished fabric on the loom, we used 4 lbs. 3 oz. of the rayon. At \$12.00 per lb., the total cost of the weft for 6-1/2 yards was \$50.25, so the cost per yard comes to \$7.71.

WARP COST PER YARD, 40" wide	.38
WEFT COST PER YARD, 39"	7.71
=====	

FABRIC COST PER YARD COMES TO: \$9.09

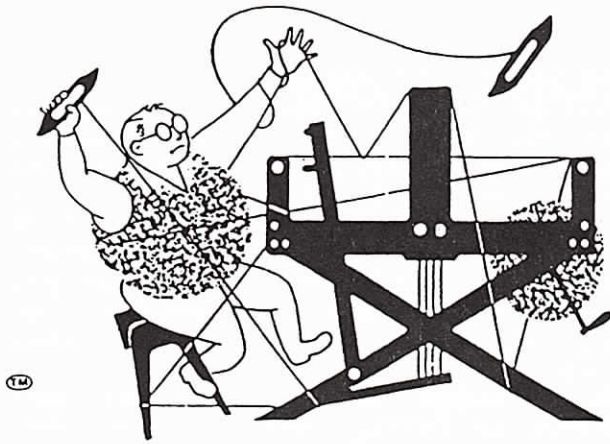
If you plan on weaving a table-cloth 3 yards long, the cost will be \$27.27.

CLASSIFIED ADVERTISING:

6-2/3 MERCERIZED, DYED PIMA COTTON, in 15 colors. This beautiful cotton has 840 yards per lb., has a twist almost like a cable twist, and it is available in our stock in 15 colors, and we can special order for you in an additional 15 colors, in 5 lb. lots, the other colors in this line. Beautiful, beautiful colors, and a rich luster cotton. \$16.00 per lb. on about 1 lb. cones. ROBIN & RUSS HANDWEAVERS, INC., 533 No. Adams St., McMinnville, Oregon 97128.

3.5/2 ply dyed, colored cotton flake.

cotton has about 3,000 yards per lb., comes on usually about 2 to 3 lb. cones. Our price is \$6.00 per lb. by the cone, and we can wind off 1/2 lb. or 1 lb. tubes for you at the same price. About 15 colors in stock, and we also have one twice as heavy, with 1400 to 1500 yards per lb. Both of these are unmercerized cottons, and can be used for warp or weft.



drafts and designs

a guide for 5 to 12 harness weaves

VOLUME 35, Number 7, March, 1993:

WIG-WAG or ZIG-ZAG

This 8 harness sample reminds one of a Zig-Zag trail, going back and forth. It is from an experimental warp project I found in a German text entitled GEWEBE TECHNIK. Even though it has fairly long floats, it seems to be quite firm and durable.

WARP:

Our warp is the 16/2 Ramie in 3 colors. Black, White, and Red. Ramie is a member of the Bast family of fibers, and also the Nettle family of fibers. The 16/2 Ramie has 2400 yards per lb., comes on about 2-1/2 lb. cones or 4 oz. tubes of 600 yards each. Our ramie is from Switzerland.

WEFT:

Our weft is a 50% silk, 50% wool yarn in a 3 ply, which we try to keep in stock. It has approximately 1600 yards per lb.

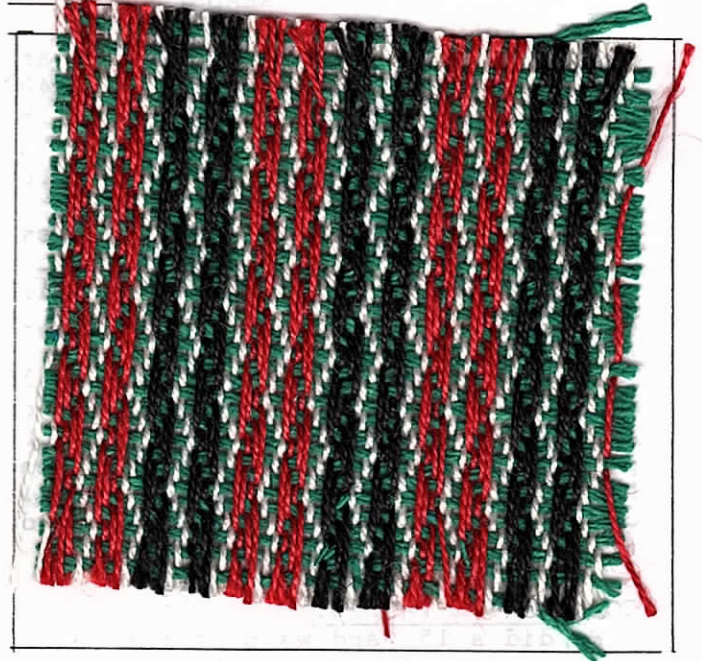
REED USED:

We used a 16 dent reed, 2 ends per dent, much closer than usual for this ramie warp. The normal sett is either 20 or 24 ends per inch. This fabric was 32 ends per inch.

TREADLING SEQUENCE:

There are 6 shots in each complete pattern repeat. The treadling sequence is 2,3,4,5,4,3, repeated over and over.

SAMPLE:



TIE-UP DRAFT:

8	X		X	X	X	X	X				
7	X	X		X	X			X			
6	X	X	X		X				X		
5	X	X	X	X						X	
4					X	X	X	X	X		
3				X		X	X	X		X	
2			X			X	X		X	X	
1		X				X	X	X	X		
		1	2	3	4	5	6	7	8	9	10

DRAFTS AND DESIGNS:

Published monthly (except July and August, by Robin & Russ Handweavers, Inc., 533 North Adams St., McMinnville, Oregon 97128.

SUBSCRIPTIONS:

are \$10.00 per year. The Canadian subscriptions are \$15.00 per year. It now costs 67¢ each to send issues to Canada and abroad. Back issues or single copies are \$1.25 each, plus 29¢ postage. All subscriptions start with the September issue. If you subscribe after September, all issues from September on will be sent to you.

VOLUME 35, Number 7, March, 1993:

MORE ABOUT THE THREADS

Our warp is the 16/2 Ramie, in 3 colors. We have stocked this yarn now for about 30 years. It has 2400 yards per lb., and is \$24.00 per lb. It is spun to order and dyed for us in Switzerland. We pay about \$4.00 per lb. to have it dyed with the best dyes available for color fastness. It is easier to handle than linen, more flexible, will not stretch, will not shrink, and it resists rot and it resists mildew.

Our weft thread was one of the 15 colors of 50% silk, 50% wool, in 3 or 4 ply that we stock. It is \$16.00 per lb. if I remember correctly and has about 1600 yards per lb. It comes on about 1 lb. cones, and we do try and stock it all the time.

COST OF THE FABRIC:

We did a 15 yard warp of the Ramie, 32 per inch, 40" wide. It took 8 lbs. of warp at \$24.00 per lb., or \$192.00 was the total warp cost. This means that the cost per yard of our 15 yard warp was \$12.80 per yard.

In this fabric, we wove 6-3/4 yards of fabric, and we used 2 lbs. 7 oz. of the 50/50 silk & wool blend. At \$16.00 per lb., our total weft cost for the 6-3/4 yards was \$39.00. This means the cost per yard for the weft was \$5.78 per yard.

WARP COST PER YARD, 40" wide \$12.80
WEFT COST PER YARD, 39" wide 5.78

FABRIC COST PER YARD----- \$18.58

MORE ABOUT THIS FABRIC:

One of the most important things is that you want a firm, even, double beat on this fabric. Because of the long floats of the warp, it is important that you have a tight, firm beat to keep that float to a minimum.

Also, the finer the weft thread you use on this fabric, the shorter the warp float will be, so do keep that in mind.

Even though the float of the warp threads is fairly long, I think that this would make an excellent upholstery fabric, and I'm sure there are many other uses for it.

Our warp was 40" wide on the loom, and it wove down to 39" only, less than the normal. You should remember that the finer the weft thread, the more narrow it weaves, and the heavier the weft thread, the wider it weaves.

This fabric seems awfully expensive, but if you were using linen instead of ramie, it would probably cost you at least an additional 25% because of the high cost of linen.

A word from the editor:

Behind, behind, behind. Yes, I am behind once again, and trying to get even or up to date, but it will be at least one more month before I do. I don't know. It seems as though attending these conferences takes up so much time, both in getting ready, and in putting away and re-ordering stock after our return.

We do have projects on the loom to help us get caught up to date, so you will be seeing another issue soon.

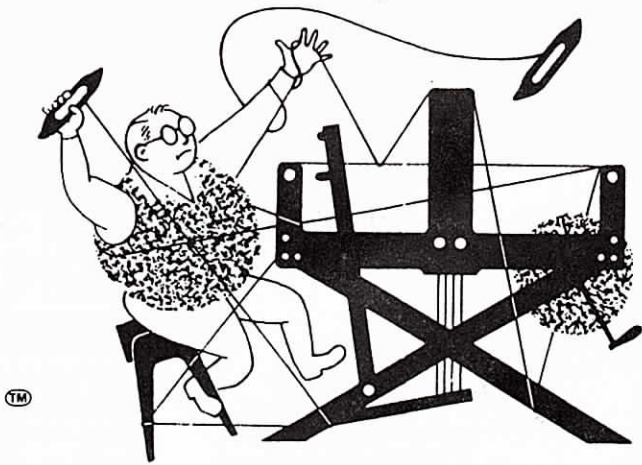
THREADING DRAFT:

8	O	O	O	O
7	O	O	O	O
6	O	O	O	O
5	O	O	O	O
4	A	A	X	X
3	A	A	X	X
2	A	A	X	X
1	A	A	X	X

KEY TO COLORS IN THE WARP:

- O - 16/2 Ramie, Bleached White
- X - 16/2 Ramie Red
- ◊ - 16/2 Ramie, Black

drafts and designs



a guide for 5 to 12 harness weaves

VOLUME 35, Number 9, May, 1993

BERRY SWIRL:

We started out using this pattern for baby-blankets, and now, by changing the tie-up, we have come up with a new pattern, which is quite attractive.

We like the back side of this fabric better for pattern effects, so we will put that side up in our sample.

This is a fairly expensive fabric to weave. One side has long floats in the warp and the other has long floats in the weft.

WARP:

We used the superwash wool for warp in this fabric. And in the weft, we used a tapestry tone worsted, which we have been importing from England for 15 years.

The colors of the superwash wool used in the warp are as follows:

- X - Fuschia Color
- O - Coral Color
- A - Pink

All three weft threads are the tapestry tone yarn.

WEFT:

In the weft we used 3 threads. One was the purple superwash worsted, one was the heavier tapestry tones worsted yarn in a Rose color, and the 3rd thread was the superwash worsted in a color called Coral.

SAMPLE:



TIE-UP DRAFT:

8		X	X	X				
7		X	X		X			
6		X		X		X		
5		X	X	X		X		
4		X	X	X	X		X	
3			X	X	X	X		
2				X	X	X	X	
1		X	X	X	X	X	X	
		1	2	3	4	5	6	7 8

DRAFTS AND DESIGNS:

Published monthly, (except July and August,) by Robin & Russ Handweavers, 533 No. Adams St., McMinnville, Ore., 97128.

SUBSCRIPTIONS

are \$10.00 per year. Canadian and foreign are \$15.00 per year. Back issues in the U.S.A. are \$1.25 each plus 29¢ postage or \$1.54 each. All subscriptions start with the September issue. If you subscribe after September, all issues from September on will be sent to you.

VOLUME 35, Number 9, May, 1993:

THREADING DRAFT:

8	A		A		O		O		
7	A	A		A	A		O	O	
6	A	A		A	A		O	O	
5	A	A		A	A		O	O	
4	A		A		A		O		O
3	A		A		A		O		O
2			X	X			X	X	
1			X		X		X		X

KEY TO COLORS IN THE WARP:

- X - Superwash wool, fuschia
- O - Superwash wool, coral
- A - Superwash wool, Pink

TREADLING SEQUENCE:

Please note that there are 28 shots in each complete pattern repeat. I will write out the treadling sequence by color.

1. Treadle 2,1,2, purple superwash
 2. Treadle 3,4,5,6,7,8,7,6,5,4,3, with tapestry tones in Rose.
 3. Treadle 2,1,2, purple superwash
 4. Treadle 3,4,5,6,7,8,7,6,5,4,3, with coral superwash
- End of one complete pattern repeat.
Do repeat over and over as desired.

REED USED:

We used an 8 dent reed for the superwash worsted, and it was sleyed 2 ends per dent or 16 ends per inch.

COST OF THE THREADS USED:

The superwash wool is \$24.00 per lb., and it has approximately 1800 yards per lb., and comes on 1 lb. 1 oz. cones. It is machine washable, and will not shrink.

In the weft, we used a tapestry tones yarn, which comes on 4 oz. skeins, and has 175 yards per skein.

We have about 35 colors in this. However, the company in England that we have purchased this from for almost 30 years has gone out of business, so when our current stock is exhausted, that will be the end of this yarn.

COST OF THE FABRIC:

Our warp was exclusively superwash wool yarn sized 13-1/2 x 4 ply worsted. This means the superwash yarn has approximately 1800 yards per lb. It was set-up, 42-1/2" wide on the loom at 16 per inch, so the total warp cost for 5.4 lbs. of superwash wool is \$129.60, so the cost per yard comes to \$8.64.

In our 6-1/2 yards of this fabric, we used 12, 4 oz. skeins of tapestry tones, or 3 lbs. of it. We used 1 lb. 3 oz. of the coral superwash, and then 11 oz. of the purple superwash. The total weft cost for 6-1/2 yards of fabric comes to \$116.40. This means the weft cost per yard comes to \$17.91 per yard.

WARP COST PER YARD, 42 1/2" \$ 8.64.

WEFT COST PER YARD, 41" wode 17.91

=====
fabric cost per yard comes to
\$26.55 per yard.