

# drafts and designs

*a guide for 5 to 12 harness weaves*

VOLUME 37, Number 1, September, 1994:

SINGLE THREAD BLOCKS, and DOUBLE SAMPLE:  
THREAD BLOCKS OF SWEDISH LACE

One of my favorite lace patterns, Swedish Lace can be woven on a number of harnesses, and it is fun to experiment with the

WARP:

Our warp was the 32 mercerized Pima Cotton, equivalent in size of a 5 and it has the same yardage as does the 12/2, or 5 lb.

WEFT:

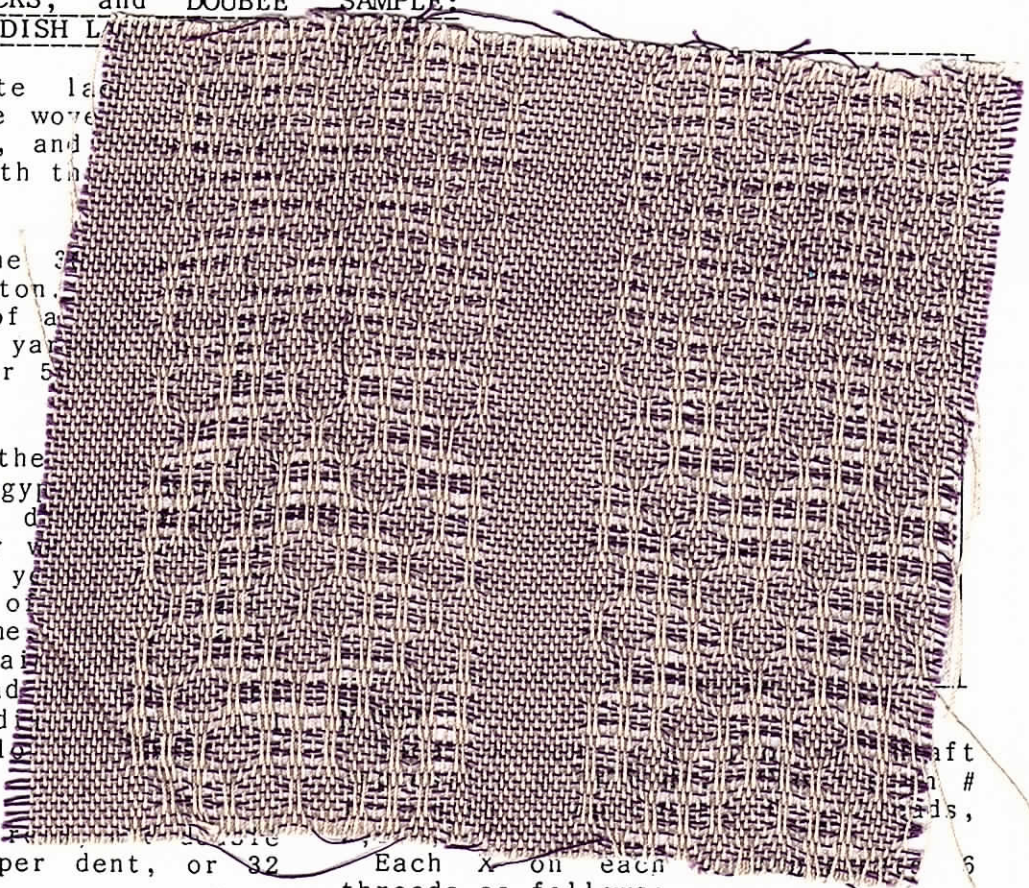
Our weft is the mercerized sak (egyptian) which has just been discontinued by our supplier, after we have used for approximately 40 years on 7,000 yard cones of it and we do have some more. We will be able to obtain more as far as we can find. 30 colors have been discontinued and are sold out. Our colors

REED USED:

We used a 16 dent reed, which we sleyed it, 2 ends per dent, or 32 ends per inch.

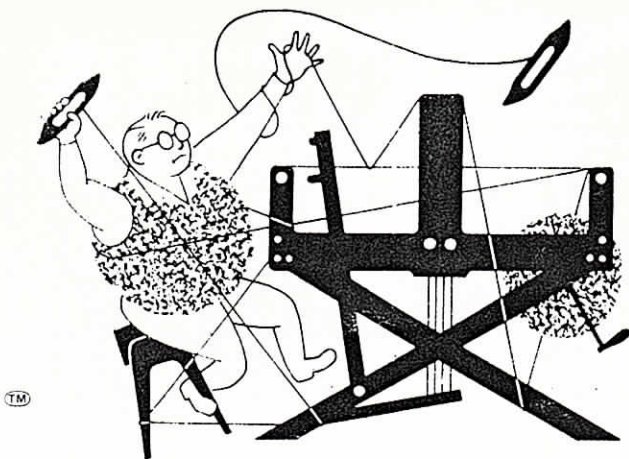
PROFILE THREADING DRAFT:

|   | C   | B   | A   |
|---|-----|-----|-----|
| 7 | X   | X   | X   |
| 6 | X   | X   | X X |
| 5 | X   | X   | X X |
| 4 | X X | X   | X   |
| 3 | X X | X   | X   |
| 2 | X   | X   | X   |
| 1 |     | XXX | XXX |



Each X on each draft represents 6 threads as follows:  
 On # 2, 2,3,2,3,2,1;  
 On # 3, 2,4,2,4,2,1,  
 On # 4, 2,5,2,5,2,1,  
 On # 5, 2,6,2,6,2,1,  
 On # 6, 2,7,2,7,2,1,  
 On # 7, 2,8,2,8,2,1,

Note that in the draft there are 28 X's. Each X represents 6 threads, so you have 28 x 6 or 168 threads in each pattern repeat.



# drafts and designs

*a guide for 5 to 12 harness weaves*

VOLUME 37, Number 1, September, 1994:

SINGLE THREAD BLOCKS, and DOUBLE  
THREAD BLOCKS OF SWEDISH LACE:

One of my favorite lace weaves, Swedish Lace can be woven with any number of harnesses, and I found it fun to experiment with this weave.

WARP:

Our warp was the 36/6 natural, mercerized Pima Cotton. It is the equivalent in size of a 12/2 cotton, and it has the same yardage per lb., as does the 12/2, or 5040 yards per lb.

WEFT:

Our warp is the size 50/3 mercerized sak (egyptian cotton) which has just been discontinued by our supplier, after we had used it for approximately 40 years. It came on 7,000 yard cones of 1/2 lb. each, and we do have some, and probably will be able to obtain natural, but as far as we can find out all of the 30 colors have been discontinued, and are sold out. Our color was PANSY.

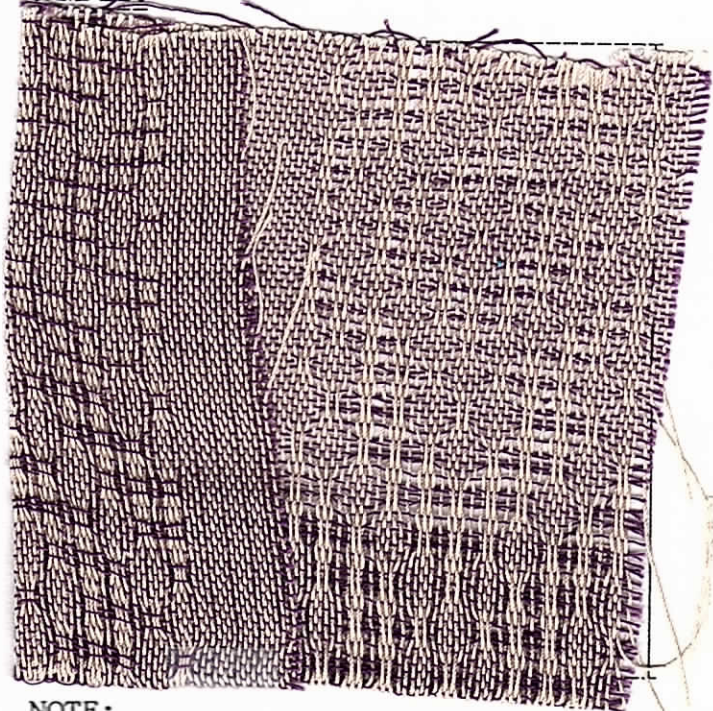
REED USED:

We used a 16 dent reed, and double sleyed it, 2 ends per dent, or 32 ends per inch.

PROFILE THREADING DRAFT:

|   | C   | B   | A   |
|---|-----|-----|-----|
| 7 | X   | X   | X   |
| 6 | X   | X   | X X |
| 5 | X   | X   | X X |
| 4 | X X | X   | X   |
| 3 | X X | X   | X   |
| 2 | X   | X   | X   |
| 1 |     | XXX | XXX |

SAMPLE:



NOTE:

Each X on the profile draft represents 6 threads. The X's on # 1, each represent 6 threads, 2,1,2,1,2,1.

Each X on each # represents 6 threads as follows:

- On # 2, 2,3,2,3,2,1;
- On # 3, 2,4,2,4,2,1,
- On # 4, 2,5,2,5,2,1,
- On # 5, 2,6,2,6,2,1,
- On # 6, 2,7,2,7,2,1,
- On # 7, 2,8,2,8,2,1,

Note that in the draft there are 28 X's. Each X represents 6 threads, so you have 28 x 6 or 168 threads in each pattern repeat.

Drafts and Designs is published monthly, (except July and August), by  
 Robin & Russ Handweavers, Inc.  
 533 No. Adams Street  
 McMinnville, Oregon 97128

SUBSCRIPTIONS-are \$12.00 per year in the U.S.A. Canadian and foreign are \$15.00 per year.

Back issues in the USA are \$1.25 ea., plus 29¢ postage, or \$1.54 each. All subscriptions start with the September issue. Call 1-800-WEAVE 91 to subscribe.

=====

VOLUME 37, Number 1, September, 1994

NOTE about threading draft:

Even though the threading draft shows 7 rows, it is an 8 harness weave, as each X in the draft represents 6 threads, as shown before.

TREADLING SEQUENCE:

For the single block: Treadle as follows:

1. Treadle 2,3,2,1,
2. Treadle 2,4,2,1,
3. Treadle 2,5,2,1,
4. Treadle 2,6,2,1,
5. Treadle 2,7,2,1,
6. Treadle 2,8,2,1,
7. Treadle 2,7,2,1,
8. Treadle 2,6,2,1,
9. Treadle 2,5,2,1,
10. Treadle 2,4,2,1,
11. Treadle 2,3,2,1,

End of single thread blocks.

Then treadle as follows:

1. 2,8,2,8,2,1,
2. 2,7,2,7,2,1,
3. 2,6,2,6,2,1,
4. 2,5,2,5,2,1,
5. 2,4,2,4,2,1,
6. 2,3,2,3,2,1,
7. 2,4,2,4,2,1,
8. 2,5,2,5,2,1,
9. 2,6,2,6,2,1,
10. 2,7,2,7,2,1,
11. 2,8,2,8,2,1,

End of double thread blocks.

Note that you could separate the single thread block and the double thread block by treadling 2,1,2,1,2,1, in plain weave between each block. We should have done this on the sample, but I'm sorry to say that we did not.

A PLAN FOR A TABLE-CLOTH:

1. Thread A to C, 7 times-- 1176 thds.
  2. Thread A to B, 1 time 108 thds.
  3. 2 extra threads, do 2,1, 2 thds.
- 
- Total Number of Warp Ends--- 1280 thds,

TIE-UP DRAFT:

|   |   |   |   |   |   |   |   |   |   |
|---|---|---|---|---|---|---|---|---|---|
| 8 | X |   | X |   |   |   | X |   |   |
| 7 | X |   | X |   |   |   | X |   |   |
| 6 | X |   |   |   | X |   |   |   |   |
| 5 | X |   |   |   | X |   |   |   |   |
| 4 | X |   | X |   |   |   | X |   |   |
| 3 | X |   | X |   |   |   | X |   |   |
| 2 |   | X |   |   |   |   |   |   |   |
| 1 | X |   | X | X | X | X | X |   |   |
|   |   | 1 | 2 | 3 | 4 | 5 | 6 | 7 | 8 |

MORE ABOUT THE THREADS USED:

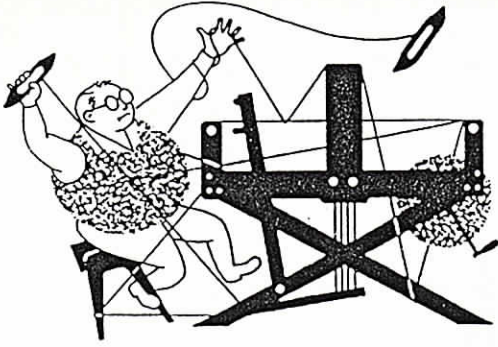
The 36/6 natural, mercerized, Pima cotton has 5040 yards per lb. It comes on about a 2 lb. 2 oz. tube ready for dyeing. We can wind off 1/2 lb. or 1 lb. spools for you. It gives a slightly different effect when woven, because it is a 6 ply. A 2 ply lies flat, but a 6 ply is a rounder thread. It does not lie flat. Anything more than 2 ply, seems to do this. It is exactly the same size as a 12/2 cotton. The 50/3 mercerized sak thread (egyptian cotton) came to us on 1/2 lb. spools of 7,000 yards each. We have just learned that the manufacturer is discontinuing this line altogether, and it is a shock, as we have been selling this thread for 40 years. It has 14,000 yards per lb., is called a size 50/3. This is a high quality thread, but many sewing manufacturers seem to make their sewing threads of a size 50/3.

COST OF THE FABRIC:

We had a 15 yard warp, 40" wide, at 32 ends per inch. It costs \$9.60 per lb., so we used in our warp, 3 lbs. 13 oz., and the total warp cost was \$36.60. This makes the warp cost per yard come to \$2.44 per yard.

We wove 6 yards of this fabric, and it took just 6 oz.. This sells for \$24.00 per lb., so 6 oz. cost \$9.00, and the weft cost per yard then comes to \$1.50.

Warp cost per yard, 40" wide \$2.44  
 Weft cost per yard, 39" wide \$1.50  
 -----  
fabric cost per yard-----\$3.94.



# drafts and designs

## *a guide for 5 to 12 harness weaves*

VOLUME 37, Number 2, October, 1994:

---

### FASHIONABLE WOMAN'S COAT MATERIAL:

This 8 harness fabric was designed as a woman's coat material. It is an interesting fabric, and the weft thread with the smooth warp makes a very striking fabric.

### WARP:

Our two warp threads are a 3 ply wool yarn, called Bristol Wool, and it is an English Wool that a knitting firm had been unable to sell, so we purchased the entire line of it. The English Company had this yarn spun for them in Peru. We still have about 30 colors left on hand. One of these in the warp was LIGHT LAVENDER and the other color was the DARK PURPLE.

### WEFT:

Our weft yarns were 3 different yarns. Two of them, the loop wool with metallic twist, and the natural mohair-alpaca blend were both wound together to act as one thread.

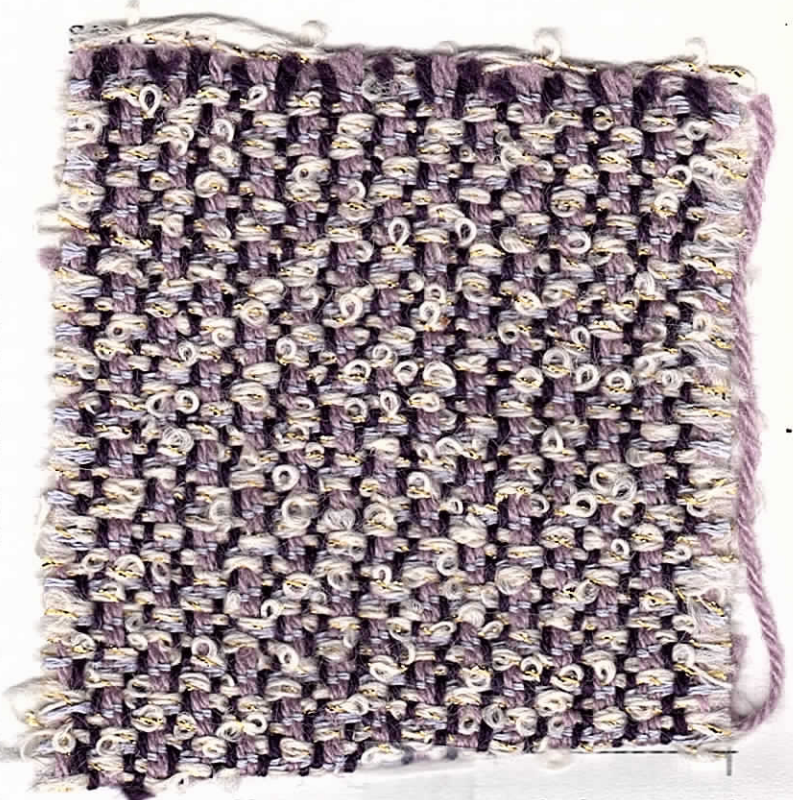
The 3rd weft thread was a 2/2/30 SPUN SILK IN A BLUE LAVENDER color and it was also doubled on the bobbin, to act as one thread.

### REED USED:

An 8 dent reed was used, and it was double-sleyed, 2 ends per dent, or 16 ends per inch.

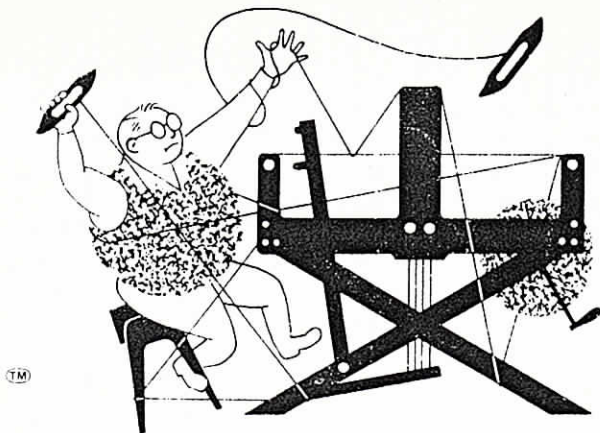
### TREADLING SEQUENCE:

There are just 8 shots in each pattern repeat, and this is as follows:



1. Treadle # 1 - natural loop wool with a gold twist, and alpaca & mohair, 1 end of each on bobbin.
2. Treadle # 2 - Spun silk size 2/2/30, doubled on the bobbin.
3. Treadle # 3 - Spun silk size 2/2/30, doubled on the bobbin.
4. Treadle # 4 - natural loop wool with a gold twist, and alpaca & mohair, 1 end of each on bobbin.
5. Treadle # 5 - natural loop wool with a gold twist, and alpaca & mohair, doubled, 1 end of each on the bobbin.
6. Treadle # 6 - Spun silk size 2/2/30, doubled on one bobbin.





# drafts and designs

*a guide for 5 to 12 harness weaves*

VOLUME 37, Number 3, November, 1994:

## BLANKET BOUND:

We thought this 8 harness weave would be nice in a light weight blanket or throw. It is almost a type of cellular weave, so should act as a good blanket or throw, and keep you warm, and yet be light-weight. It is a variation of an extended point twill.

## WARP:

Our warp is the 2/16's worsteds, which we have on a special sale at \$8.00 per lb. We had about 40 to 50 colors in this, but it is now down to about 20 colors. We repeated the threading draft 3 times, and each repeat of pattern was threaded with each of the 3 colors. The 3 colors we used are Cranberry Wine, Crocus Lavender, and Rosewood Pink. Remember, 53 threads of each of these 3 colors in the warp, one after the other.

## WEFT:

Our weft was the same three colors as were used in the warp, Cranberry Wine; Crocus Lavender; and Rosewood Pink. All in 2/16's worsted.

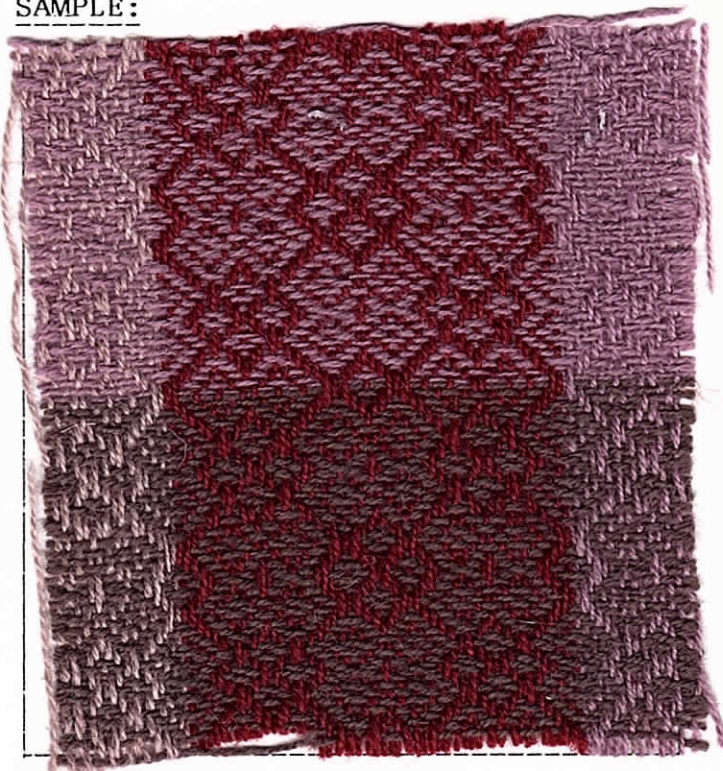
## REED USED:

A 12 dent reed was used, and it was double-sleyed, 2 ends per dent, or 24 threads per inch.

## TREADLING SEQUENCE:

Our treadling sequence was exactly the same as the threading sequence,

## SAMPLE:



but I will also give it to you here in a treadle by treadle sequence:

### TREADLE AS FOLLOWS:

8,7,6,5,4,3,2,1,2,3,4,5,4,3,2,1,2,3,4  
5,6,7,8,7,6,5,4,5,6,7,8,7,6,5,4,3,2,1,  
2,3,4,5,4,3,2,1,2,3,4,5,6,7,8. End  
of one complete pattern repeat.  
Repeat over and over with each of the  
three colors. Or, if you desire, you  
can use just one color, or even try 2  
or 3 heavier wool threads in the  
weft. This is open to many  
possibilities.

*Drafts and Designs* is published monthly,  
 (except July and August), by  
 Robin & Russ Handweavers, Inc.  
 533 North Adams Street  
 McMinnville, OR 97128

**SUBSCRIPTIONS-** are \$10.00 per year U.S.  
 Canadian and Foreign are \$15.00 per year.

Back Issues in the U.S. are \$1.25 each, plus  
 29¢ postage, or \$1.54 each. All subscriptions start  
 with the September issue. If you subscribe after  
 September, all issues from September on will be  
 sent to you. Call 1-800-WEAVE-91 to subscribe.

=====

**VOLUME 37, Number 3, November, 1994:**

**THREADING DRAFT:**

|   |   |   |   |   |   |   |   |   |   |   |  |
|---|---|---|---|---|---|---|---|---|---|---|--|
| 8 | X |   |   |   | X | X |   |   |   | X |  |
| 7 | X |   |   |   | X | X | X | X |   | X |  |
| 6 | X |   |   |   | X | X | X | X |   | X |  |
| 5 | X |   | X |   | X | X | X |   | X | X |  |
| 4 | X | X | X | X | X |   | X | X | X | X |  |
| 3 | X | X | X | X | X |   | X | X | X | X |  |
| 2 | X | X | X | X | X |   | X | X | X | X |  |
| 1 | X |   | X |   | X |   | X |   | X |   |  |

**NOTE:**

This type of threading draft is sometimes called an extended  
 point twill.

**TIE-UP DRAFT:**

|   |   |   |   |   |   |   |   |   |
|---|---|---|---|---|---|---|---|---|
| 8 | X |   |   | X |   |   | X | X |
| 7 |   |   | X |   |   | X | X | X |
| 6 |   | X |   | X | X | X |   |   |
| 5 | X |   |   | X | X | X |   |   |
| 4 |   |   | X | X | X |   |   | X |
| 3 |   | X | X | X |   |   | X |   |
| 2 | X | X | X |   |   | X |   |   |
| 1 | X | X |   | X |   |   | X |   |
|   | 1 | 2 | 3 | 4 | 5 | 6 | 7 | 8 |

**MORE ABOUT THE THREADS USED:**

A mill in Philadelphia went out of  
 business, and one of our suppliers  
 purchased their whole inventory, and  
 offered it to us at a good price, so  
 we purchased all of it, some 2,000  
 lbs. This is an excellent buy, as  
 the manufacturer of this yarn told me  
 that it cost more than \$8.00 per lb.  
 to manufacture and dye this thread.

This yarn has 4,880 yards per lb.,  
 and we have about 20 colors in stock.  
 A tremendous buy, this yarn was used  
 for both warp and weft.

Also, from the same mill, we  
 purchased some 2/34's worsted, and we  
 have 6 colors in stock of this. I  
 suggest 30 or 32 epi as a wonderful  
 sett for it, and of course it can be  
 set at 24 as we did, for a more open  
 woven fabric.

**COST OF THE FABRIC:**

For this fabric, we did a 15 yard  
 warp, 40" wide on the loom. We used  
 13 oz. each of the three different  
 colors for our 15 yard warp, so the

total warp cost came to \$19.50, and  
 that means the cost per yard, 40"  
 wide, was \$1.30 per yard. In the  
 weft, we used approximately 1 lb.  
 each of the three colors as weft in  
 our 14 and 1/3 yards of fabric. This  
 the weft cost per yard came to \$1.60.

WARP COST PER YARD, 40" wide \$1.30

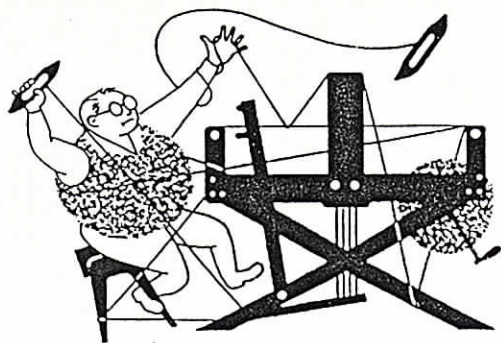
WEFT COST PER YARD, 38" wide \$1.60

=====

**fabric cost per yard,----- \$2.90.**

**A NOTE FROM THE EDITOR:**

As we are losing about \$6,000.00  
 per year on our two publications, we  
 will try mailing out 3 issues at a  
 time, twice, and two issues a time,  
 twice each year. We are trying it  
 now to see how much we can save by  
 doing this.



# drafts and designs

## *a guide for 5 to 12 harness weaves*

VOLUME 37, Number 4, December, 1994:

---

### ROSEGARDEN IN WINTER:

Another 8 harness Twill threading, and we have woven an elaborate herringbone pattern. It is a busy, dark fabric, and yet the pattern is an intriguing one.

### WARP:

We have used two colors of 3/14's worsted, in Bristol Wool for the warp. Our two colors used were:

- O - #13, Dark Purple
- X - # 29, Light Lavender

### WEFT:

We used a 3rd color in the weft of the 3/14's Bristol Wool worsted yarn. It is color # 19, Antique Rose

### REED USED:

We used an 8 dent reed, and double sleyed it, 2 ends per dent, or 16 epi.

### TREADLING SEQUENCE:

We had a special tie-up for this pattern, taking 12 treadles, and here is the sequence of treadling.

Treadle 1,2,3,4,5,6,7,8,9,10,11,12,  
11,10,9,8,7,6,5,4,3,2,

End of one complete pattern repeat.

Do repeat over and over as desired

Also, you could weave a straight diagonal, by treadling  
.1, 2, 3, 4, 5, 6, 7, 8, 9, 10, 11,  
12, and repeating this over and over.

There are many other treadlings that can be done with this tie-up.

### SAMPLE:



NOTE: I have been corrected. I always thought the Bristol Wool was a woolen spun yarn, but I am incorrect, and it is a worsted spun yarn with some 2600 yards per lb., instead of the 1400 a woolen spun yarn would have. It has such a soft hand I did not think it was worsted. It is so soft, I thought it was woolen spun.

### MORE ABOUT THE FABRIC:

I am going to be sorry to see this sold out. It is such a nice, soft yarn. We still have about 25 of the original 30 colors we started out with. It comes on about 14 oz. cones.

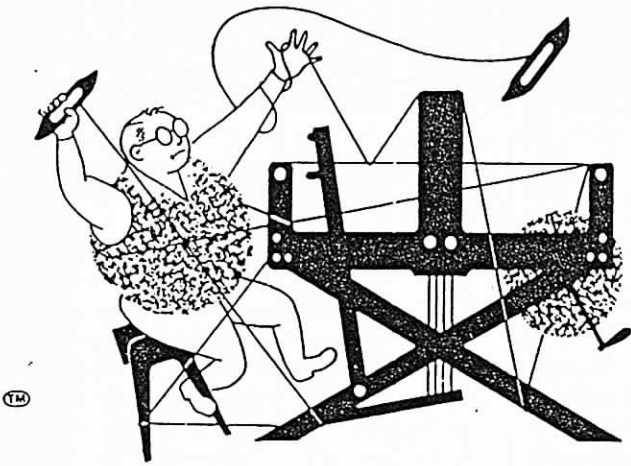








# drafts and designs



*a guide for 5 to 12 harness weaves*

VOLUME 37, No. 9, May, 1995:

## BLUE AND GREEN, A Color Lover's Delight

This sample is called a "TURNED OVERSHOT," but I do not understand why it is called this. I had to experiment a lot to come up with a fabric that I liked, and this is the result.

### WARP:

We used a cotton flake for the warp in the 1500 yards per pound size, and were very pleased with the large, overall surface pattern, this flake gives us in the weaving.

- X - Cotton flake, Medium True Blue
- O - Rea Blue Spruce (Dk. Green)

This heavier cotton flake is ideal for handweavers, with 1400 to 1500 yards per lb. We have about 20 colors of this on hand. Price on this is \$8.00 per lb. We have about 50 lbs. of each of the colors.

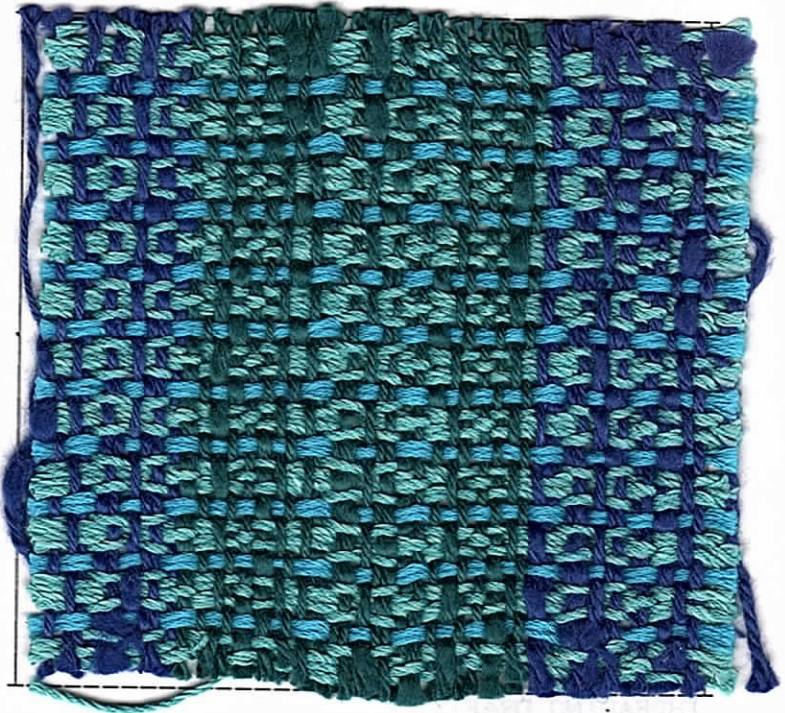
### WEFT:

In the weft, we used one color of the cotton and rayon blend yarn, which also has a 5% acrylic content, and we used one color of Carribean Blue 6 strand cotton floss, doubled in the weft, 2 ends wound on one bobbin, to act as one thread. The 6 strand floss is \$9.60 per lb., and the cotton & rayon is \$8.00 per lb.

### REED USED:

We used a 6 dent reed, and it was double sleyed, 2 ends per dent or 12 ends per inch.

### SAMPLE:



### TIE-UP DRAFT:

|   |   |   |   |   |   |   |   |   |
|---|---|---|---|---|---|---|---|---|
| 6 |   |   |   | X | X | X |   | X |
| 5 |   |   | X | X | X |   | X |   |
| 4 |   | X | X | X |   |   |   | X |
| 3 | X | X | X |   |   |   | X |   |
| 2 | X | X |   |   |   | X |   | X |
| 1 | X |   |   |   | X | X | X |   |
|   | 1 | 2 | 3 | 4 | 5 | 6 | 7 | 8 |

*Drafts and Designs* is published monthly,  
(except July and August), by

Robin & Russ Handweavers, Inc.  
533 North Adams Street  
McMinnville, OR 97128

**SUBSCRIPTIONS-** are \$10.00 per year U.S.  
Canadian and Foreign are \$15.00 per year.

Back Issues in the U.S. are \$1.25 each, plus 29¢ postage, or \$1.54 each. All subscriptions start with the September issue. If you subscribe after September, all issues from September on will be sent to you. Call 1-800-WEAVE-91 to subscribe.

VOLUME 37, No. 9, May, 1995:

There are 12 shots in each complete pattern repeat. Repeat over and over as desired.

Treadle 5,4,3,4,5, with Jade  
Treadle 2, doubled weft, Carribe Blue  
Treadle 5,4,3,4,5, with Jade  
Treadle 2, with doubled Carribe Blue

End of one complete pattern repeat.

MORE ABOUT THE THREADS USED:

We have about 20 colors in this heavier cotton flake. I was very pleased with the overall surface of this fabric, as the flakes come up in various spots, almost making a pattern in the fabric. The 6 ply cotton in the weft is a 6 strand floss which has 2080 yards per lb. It is \$9.60 per lb. while it lasts. It came on about 1 lb. 3 oz. cones. The second color was a cotton & rayon combination in a smooth thread with about 1500 yards per lb. It is 45% Rayon, 5% Polyester, and 50% Cotton. We have been purchasing and stocking various colors in this for about 10 years. It is \$8.00 per lb.

THREADING DRAFT:

|   |   |   |   |   |   |   |   |   |   |   |   |   |
|---|---|---|---|---|---|---|---|---|---|---|---|---|
| 6 |   |   | X | X |   |   | X | X |   |   | X | X |
| 5 |   | X | X | X | X |   | X | X | X | X |   | X |
| 4 | X | X |   | X | X | X |   | X | X | X | X | X |
| 3 |   |   | X |   | X |   | X |   | X |   | X | X |
| 2 | X | X |   |   | X | X |   |   | X | X |   |   |
| 1 | X |   | X |   | X |   | X |   | X |   |   |   |

COST OF THE FABRIC:

We did a 15 yard warp, 40" wide on the loom. This took 7,200 yards of the cotton flake. This comes to 4 and 8/10's lbs. of the cotton flake.

The total warp cost is \$38.40, and the cost per yard comes to \$2.56 per yard.

In 6 and 1/2 yards of finished fabric, we used 2 lbs. 8 oz. of Jade cotton and rayon at \$8.00 per lb. This comes to \$20.00. We also used 13 oz. of 6 fold, cotton floss at \$9.60 per lb., so we used \$7.80 in the Carribean Blue 6 strand floss. So, our total weft cost for 6-1/2 yards was \$27.80, and that means the cost per yard for the weft was \$4.28 per yard.

WARP COST PER YARD, 40" wide \$2.56  
WEFT COST PER YARD, 39" wide \$4.28

=====  
Fabric cost per yard was --- \$6.84

MORE ABOUT THE FABRIC:

Please note that we doubled the 6 strand Carribe Blue cotton floss on the bobbin, and used it as one thread. The rest of the thread was used singly. We used a firm, even, medium, double beat with the weft. There were no broken threads or no problems in the weaving of this sample. It was a pleasure to weave.

OUT OF PRINT BOOKS:

We have one copy of HOME WEAVING, BY Oscar Beriau, a 1952 edition, and the price is \$20.00. It is a hard-bound book, 1926 edition, in good condition. The outer paper cover of the hardbound book is poor, but the book itself, and the regular cover is in good condition.

We have one copy of HANDBOK I VEVING, by Caroline Halvorsen, a hard bound copy, a 1948 edition for \$20.00 and it has many 4 and 8 harness patterns in this older Norwegian book

Also, we have 3 copies of CREATIVE DESIGN IN WALL HANGINGS, by Lili Blumenau, all hard-bound, all at \$15.00 each. All in good condition.