

# drafts and designs

*a guide for 5 to 12 harness weaves*

VOLUME 38, Number 1, September, 1995

PINK AND PEACH POPCORN:

Our sample this month is a Rib Weave variety in 6 harnesses. It is related to the "Cord" family of weaves. It gives a very interesting weave effect on the top side of the fabric, similar to a honeycomb or a waffle weave.

WARP:

In the warp, we used 3 colors of the perle 5 cotton. We used 3 colors as indicated herewith:

- X - Perle 5, Peach cotton
- O - Perle 5, Natural cotton
- A - Perle 5, Pink cotton

WEFT:

One thread was used in the weft, and it was the 6-2/3 BLEACHED WHITE PIMA COTTON. It has 840 yards per lb., and the price is \$16.00 per lb.

REED USED:

A 10 dent reed was used, and it was double-sleyed, 2 ends per dent or 20 ends per inch.

TIE-UP DRAFT:

6		X		X
5	X		X	
4				X
3			X	
2		X		
1	X			
	1	2	3	4

SAMPLE:



THREADING DRAFT:

6		O		O
5		O		O
4		X	X	X
3		X	X	X
2	A	A	A	
1	A	A	A	

KEY TO COLORS IN THREADING DRAFT:

- X - Perle 5 cotton, Peach
- O - Perle 5 cotton, Natural
- A - Perle 5 cotton, Pink

*Drafts and Designs* is published monthly,  
(except July and August), by

Robin & Russ Handweavers, Inc.  
533 North Adams Street  
McMinnville, OR 97128

**SUBSCRIPTIONS-** are \$10.00 per year U.S.  
Canadian and Foreign are \$15.00 per year.

Back Issues in the U.S. are \$1.25 each, plus  
29¢ postage, or \$1.54 each. All subscriptions start  
with the September issue. If you subscribe after  
September, all issues from September on will be  
sent to you. Call 1-800-WEAVE-91 to subscribe.

VOLUME 38, Number 1, September, 1995

TREADLING:

There are only four shots in each  
pattern repeat.

Treadle 1,2,1,2,3,4,3,4 using the  
6-2/3 bleached white mercerized Pima  
cotton.

COST OF THE THREADS USED:

Our warp is the Perle 5 cotton,  
mercerized, at a special-special  
price of \$12.00 per lb. while it  
lasts. It has 2100 yards per pound,  
and comes on about 1/2 lb. tubes.  
It also came on about 2-1/2 lb.  
cones, and quite a bit of it is still  
on these cones, although, we are  
gradually winding it off onto 1/2 lb.  
tubes. There are just about 5 colors  
at this special price of \$12.00 per  
lb., and the regular price seems to  
start at \$17.00 per lb. and go clear  
up to \$24.00 per lb. The colors at  
this special price are pink, peach,  
red, natural, and a light blue and a  
medium blue. An extremely good buy.

The weft thread is a 6-2/3 Pima  
cotton in bleached white at \$16.00  
per lb. It has a high sheen, and is  
an outstanding thread. We are trying  
to obtain a line of 5/2 perle cottons  
in about 23 colors, which we hope to  
sell at about \$14.00 to \$16.00 per  
lb. for good, fast colors. We will  
know in a month if we can obtain this.  
The 6-2/3 Pima in bleached white  
comes on about 1 lb. cones.

COST OF THE FABRIC:

We did a 15 yard warp, 40" wide,  
and at \$12.00 per lb., our total warp  
cost was \$69.00, so the cost per yard  
comes to \$4.60 per yard.

This was for the 3 different colors  
in the warp.

In the weft, we used 5 lbs. of weft  
to weave 6-3/4 yards of finished  
fabric on the loom, under tension.  
When off the loom, this came down to  
6-1/4 yards of finished fabric. So,  
we will figure the weft cost based on  
the 6-1/4 yards of finished fabric.  
Our weft cost per yard with the 6/2/3  
bleached white Pima cotton was \$9.60  
per yard.

WARP COST PER YARD, 40" wide \$ 4.60  
WEFT COST PER YARD, 39" wide 9.60  
-----  
FABRIC COST PER YARD, is: \$14.20

USED AND OUT OF PRINT BOOKS:

We have a good collection of out of  
print, slightly used books. If you  
are interested in seeing what we have  
available, please send us a self-  
addressed stamped envelopes, marked  
O.P. Books on the back flap, we will  
be glad to send you a list of what is  
currently available and the price for  
same.

ROBIN & RUSS HANDWEAVERS, INC., 533  
No. Adams St., McMinnville, Or. 97128.

18/2 MERCERIZED, Suisse Natural Cotton.

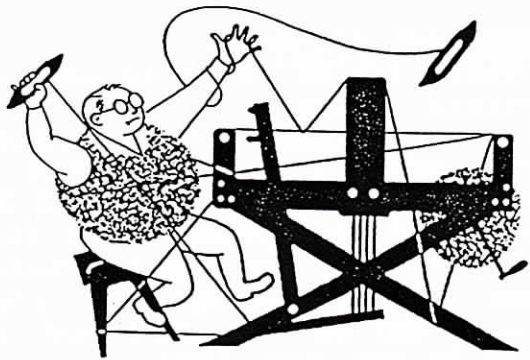
On about 1 lb. dye tubes, this nice  
mercerized Suisse cotton is a very  
nice quality, and we think we have  
200 lbs. of this to be enroute to us  
in a few days. An extremely nice  
cotton, and we hope 200 lbs. of it is  
enroute to us. It will be priced, we  
think, at \$9.60 per lb., for the  
natural only

Robin & Russ Handweavers,  
533 No. Adams St., McMinnville, Ore.,  
97128.

STARTING MULTIPLE HARNESS WEAVING.

How about a 25 swatch, sample note-  
book with 25 samples. Complete woven  
directions are given with the cost of  
the warp and weft, treadling and all  
details.

We have these all in one notebook  
at \$15.00 per copy. Shipping extra.  
ROBIN & RUSS HANDWEAVERS, 533 No.  
Adams St., McMinnville, Ore. 97128.



# drafts and designs

*a guide for 5 to 12 harness weaves*

VOLUME 38, No. 1., September, 1995

**LAVENDER AND LACE:**

Our pattern this month, is from an old book from Finland, published about 1930. I think that I have woven something very similiar before, but this is a beautiful sample: It is an 8 harness sample, fun to weave.

**WARP:**

Our warp is a, size 6/2 mercerized cotton. We used two colors in the warp: They are:

- X - Has 2 names, Carnation Pink or it is also called Carnation Rose
- O - 6/2 Merc. Lilac Lavender cotton.

**WEFT:**

In the weft, we used the same two colors as in the warp, 6/2 mercerized Med. lRose and Lt. Lilac Lavender.

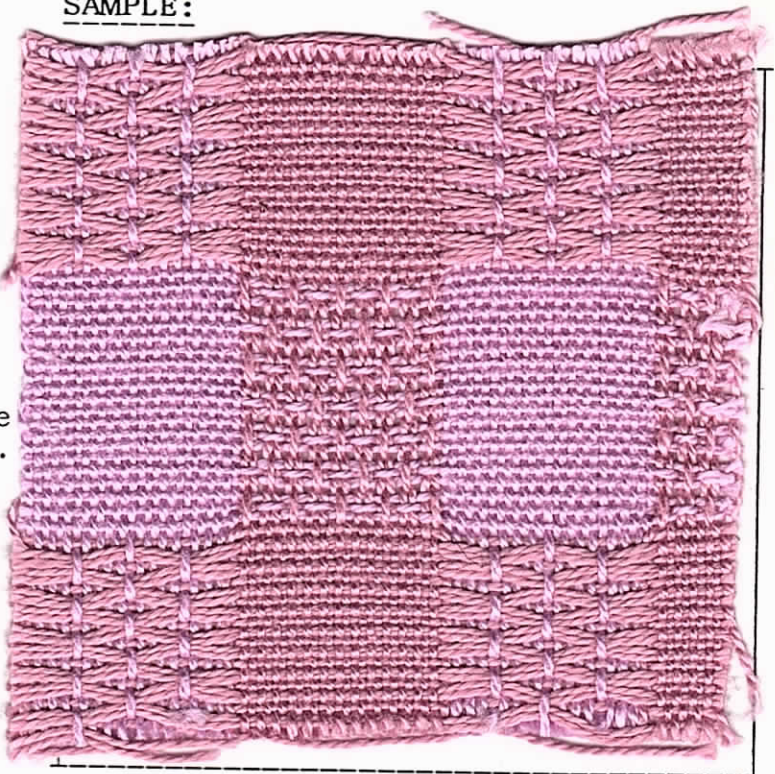
**REED USED:**

We used a 12 dent reed, and it was double sleyed, 2 ends per dent, or 24 ends per inch.

**TIE-UP DRAFT:**

8				O		O		O	
7			O	O	O			O	
6						O		O	
5			O		O			O	
4				O				O	O
3			O			O		O	
2				O	O			O	
1			O		O	O			
	1	2	3	4	5	6			

**SAMPLE:**



**MORE ABOUT THE THREADS USED & the FINISHED FABRIC:**

.Our warp was 40" wide, and 15 yards long. We wove 6-1/2 yards of this fabric for our samples. In our warp, we used 5 and 3/4 lbs. of the 6/2 cotton in the warp at a cost of \$12.00 per lb. So, our 15 yard warp cost \$69.00 and the cost per yard comes to \$4.60 per yard.

In our weft, we used the same threads and we used 1 lb. of Lavender Lilac and 1 lb. 5 oz. of the Medium Rose in our 6-1/2 yards of finished

*Drafts and Designs* is published monthly,  
(except July and August), by  
Robin & Russ Handweavers, Inc.  
533 North Adams Street  
McMinnville, OR 97128

SUBSCRIPTIONS- are \$10.00 per year U.S.  
Canadian and Foreign are \$15.00 per year.

Back Issues in the U.S. are \$1.25 each, plus  
29¢ postage, or \$1.54 each. All subscriptions start  
with the September issue. If you subscribe after  
September, all issues from September on will be  
sent to you. Call 1-800-WEAVE-91 to subscribe.

THREADING DRAFT:

8		X							
7		X		X					
6	X	X	X	X	X	X	X	X	X
5	X	X	X	X	X	X	X	X	X
4									
3									
2									
1									

COLORS USED IN THREADING DRAFT:

- X - 6/2 Merc.Cotton, Carnation Rose
- O - 6/2 Merc.Cotton, Lilac Lavender

fabric, and this came to a cost of  
\$27.75 for the 6-1/2 yards, or the  
actual weft cost per yard comes to  
\$4.27.

WARP COST PER YARD, 40" wide \$4.60  
WEFT COST PER YARD, 39" wide 4.27

FABRIC COST PER YARD----- \$8.87

This was an easy fabric to weave,  
and I do not think we had one broken  
thread in the entire 6-1/2 yards of  
fabric. And this 6/2 cotton is a  
pleasure to work with. You could  
have used 5/2 mercerized cotton in  
place of the 6/2. When our current  
stock of this 6/2 cotton is used up,  
that is the end, as our supplier has  
discontinued this size and we  
purchased his entire stock. Now,  
luckily, we have been able to replace  
this with a line of 26 colors of  
mercerized perle cotton on 1 lb.  
cones at \$16.00 per lb. This is hard  
to find, so we were very fortunate to  
be able to do this. We have all of  
these new colors in stock now, and it  
has 2100 yards per lb., and is a  
perle 5 or size 5/2 as it is often  
called.

This is a very pleasing pattern to  
weave, and one you will enjoy.

TREADLING SEQUENCE:

There are 52 shots in each complete  
pattern repeat.  
Block A. Treadle 5,6,5,4,3,4, three  
times and then treadle 5,6,5, to bal.  
Block B. Treadle 4,2,2,1,2,2, five  
times and then treadle # 4 to balance.  
Note all 2's are double shots on the  
same treadle, so on # 2, always go  
around the outside warp end, and come  
back in the same shed.  
End of one complete pattern. Do  
repeat over and over as desired, or  
vary to suit your needs.

ADVERTISEMENTS:

SPACE-DYED SILK AND RAYON SLUBBY YARN

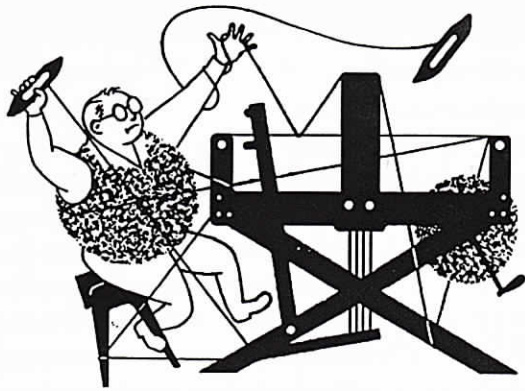
This blend of 6 colors is dominated  
by 4 of them, and the blend of silk  
and rayon has made this a most  
beautiful combination. The dyers  
call it Brazilia. It is irregular,  
thick and thin, with 2100 yards per  
lb. Price is \$12.00 per lb. We have  
just 50 lbs. of this color left.  
Robin & Russ Handweavers, 533 No.  
Adams St., McMinnville, Ore. 97128.  
The colors are Red Violet, Rust,  
Hunter and Avocado Green.

1400 YPP BOYSENBERRY COLOR, COTTON

FLAKE. It can be used for warp or  
weft, and was one color we were  
lacking in our 30 colors we have.  
Price is \$8.00 per lb., and it came  
on about 2-1/2 lb. cones. We can  
wind off a 1/2 lb. tube or 1 lb. tube  
if anyone would like.

SPACE DYED COTTON FLAKE, with a gold

twist. The color blending is light  
and dark grey, tan, beige and  
natural, with a black binder and a  
gold twist. It is 70% cotton, 21%  
black binder, and 9% metallic twist  
around this color blending. Very  
striking. Called Zebra by the dye  
house, it is also \$12.00 per lb. We  
have about 50 lbs. of this one also..



# drafts and designs

## *a guide for 5 to 12 harness weaves*

Volume 38, Number 4, December, 1995

### **TRACKS IN THE SNOW:**

The cool colors of this silk fabric can become a warm addition to your livingroom decor. Pillow covers, that is! Our tightly sett silk noil warp gives this fabric the body that will help the pillows keep their shape.

My favorite feature of silk noils is that they don't show wrinkles! Too often many are afraid to make anything other than clothes with silk. Silk is more durable than you may think. Though I wouldn't recommend silks for table linens, towels, or draperies exposed to sun; Silk can be used in some upholstery applications, blankets, and more.

### **WARP:**

The warp combines two colors of SILK NOIL: Black (X), and a soft Blue(O) with 3500 yds/lb. at \$18.00/lb.

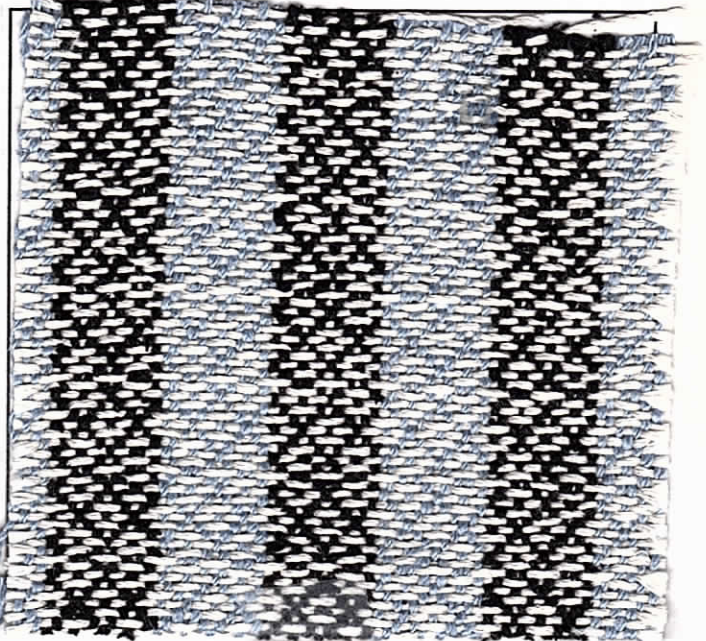
### **WEFT:**

Our weft is 3/2/27 white Spun Silk (2520 yds./lb.), at \$48.00/lb. This is a lovely, shiny silk cabled with a tight twist. Note that our fabric is somewhat weft-faced. With pillows in mind, I wanted the soft, slick silk to dominate the hand of the fabric. The reverse side of this fabric is also quite attractive. If you plan to reproduce this fabric and choose to display the reverse side, I recommend using a pearl cotton or rayon weft rather than this luxurious silk.

### **REED USED:**

I used a 10 dent reed, and it was sleyed 2 ends per dent, resulting as 20 ends per inch (E.P.I), 40" wide.

### **SAMPLE:**



### **TREADLING SEQUENCE:**

There are 10 shots for each complete pattern repeat.

1. Treadle 6,5,4,3,2,1,2,3,4,5 with the white Spun Silk.

End of one complete pattern repeat.

*Do repeat over and over.*

### **TIE-UP DRAFT:**

6			X		X	
5		X				X
4	X			X		
3		X				X
2			X		X	
1	X			X		
	1	2	3	4	5	6

*Drafts and Designs* is published monthly, (except July and August), by  
Robin & Russ Handweavers, Inc.  
533 North Adams Street  
McMinnville, OR 97128

**SUBSCRIPTIONS-** are \$10.00 per year U.S. Canadian and Foreign are \$15.00 per year.

Back Issues in the U.S. are \$1.25 each, plus 55¢ postage, or \$1.80 each. All subscriptions start with the September issue. Call 1-800-WEAVE-91 to subscribe. *NOTE: Due to low current circulation, we are now mailing 3 issues at a time.*

**VOLUME 38, Number 4, December, 1995**

**THREADING DRAFT:**

6	o					o					x					x					
5		o					o					x					x				
4			o					o					x					x			
3				o					o					x					x		
2					o					o					x					x	
1						o					o					x					x

**O = BLUE SILK NOIL**

**X = BLACK SILK NOIL**

**COST OF THE THREADS USED:**

**WARP:**

We did a 15 yard warp, 40" wide in the reed sett at 20 E.P.I. using 3½ lbs. (1½ lbs., 5250 yards each of the 2 Silk Noils) priced at \$18.00 per pound.

**TOTAL WARP COST : \$63.00 or \$4.20/ yd.**

**WEFT:**

In the weft, we wove 6½ yards using 1 lb 12½ oz., 4490 yards of the 3/2/27 white Spun Silk (\$48.00/lb.)

**TOTAL WEFT COST: \$85.44, or \$13.14/ yd.**

**TOTAL FABRIC COST PER YARD: \$17.34.**

**MORE ABOUT THIS FABRIC:**

For washing silk fabrics, I always recommend hand washing with Ivory Snow. Many weavers like to machine-wash and dry silk noil fabrics prior to sewing. This gives the fabric a soft, napped finish.

**Advertisements: New Yarns Specials!**

**10/2 Soft-Spun UNMERCERIZED COTTON:**

Many weavers have been following a recent trend making traditional table linens, towels, bed spreads, and clothing using unmercerized cottons. We always try to give you high-quality, yet more reasonable alternatives to the popular brand name yarns while keeping in touch with current trends of color and style. Since unmercerized cottons are traditionally not as strong as mercerized cottons, we have avoided stocking them in finer weights until now. We just found a wonderful selection of colors in this strong waxed 10/2 that provides an outstanding weaving warp at setts from 16 to 24 ends per inch. **(20 COLORS IN STOCK) 4200 Yards/lb. — \$8.00 per pound**

**ANGEL WHITE BRUSHED KID MOHAIR BLEND:**

This lovely soft yarn is on such beautifully wound skeins that it is tempting to wear them around your neck as they are! This blend combines 35% Brushed Kid Mohair supported by 45% Acrylic and 20% Nylon Binders. Make soft-to-touch scarves, blankets, hats, mittens, and more! Sold on 1600 yard, 12 oz. SKEINS, \$10.00 each

**2-PLY SHINY PEARL 5 SPUN RAYON:** Also known as "Man-made Silk", Rayons are strong like cotton, yet have the draping characteristics of silk. We are often asked why we carry rayon since we specialize in *Natural Yarns*? Rayon is actually made from wood pulp. This spun viscose rayon yarn is supported by a fine nylon binder. Great for knitting and weaving at warp setts of 12 to 16 ends per inch. We also have a myriad of fancy curly rayon boucle yarns. 2200 Yards/lb. — \$12.00 per pound. *This would be an ideal inexpensive substitute for the silk weft featured in this month's sample.*



# drafts and designs

## *a guide for 5 to 12 harness weaves*

Volume 38, Number 5, January, 1996

### ***MOSTLY MAUVE:***

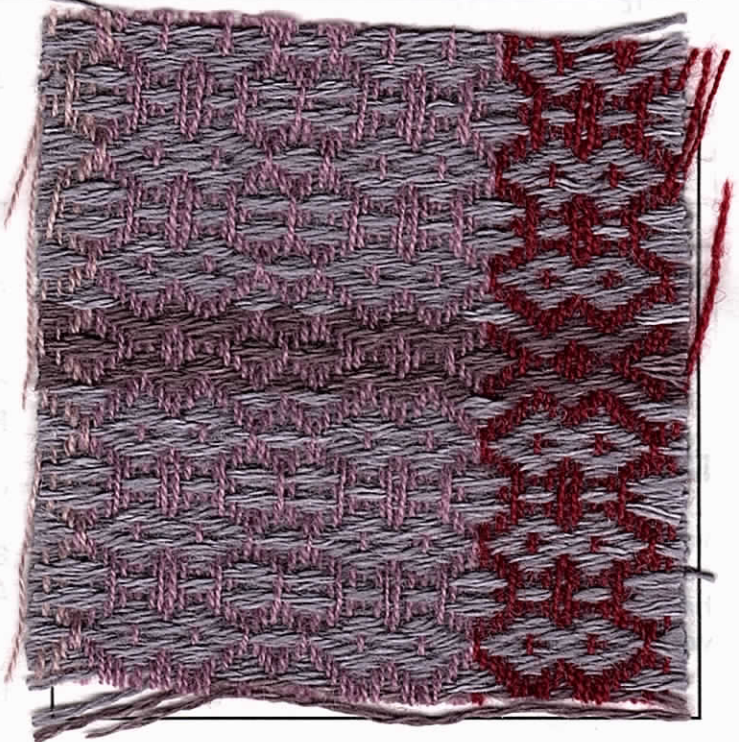
Wouldn't this fabric make an "mauvelous" blanket! It is now 12°F here and I have draped this sample fabric around me to test its insulating qualities. We used a nice tight warp sett for this wool and it's paying off! I'm not certain that I'm willing to give up this warm blanket to be cut into little 3" samples for you. It is cold today!

Our inspiration for this design came from an old 1907 Swedish pattern book. I'll bet many blankets were created from these Swedish patterns.

Note when finishing the fringes of this blanket fabric to be certain to tie or sew the fringe edge. Otherwise the long warp floats may snag and pull loose. Simple fringe twisting will not secure the warp threads enough.

### **WEFT:**

Our weft is 6/2 Spun Rayon (2520 yds/lb.), in two colors, 7344 yards of Blue Grey (2 lbs 15 oz. used) and 1812 yards of Lavender (11½ oz. used). The price is \$12.00/lb. These 6/2 Spun Rayons are from a discontinued color line. We bought all remaining inventory of this line from a knitting yarn manufacturer. All of our numerous projects we have woven with these have been turned-out exceptional.



### **WARP:**

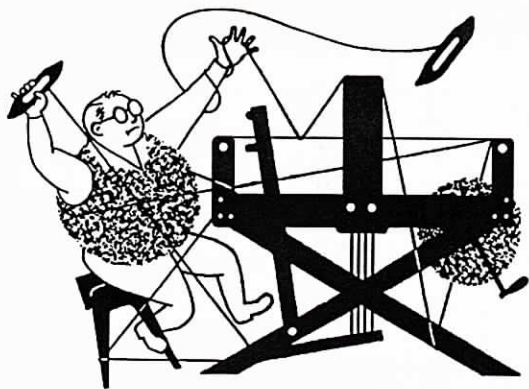
Our warp combines three colors of 2/16 worsted wool at \$8.00/lb. — Cranberry Wine, Rosewood and Crocus Lavender, all 4480 yards/lb. 1 lb. 3 oz., 5320 yards of each was used. We wound a 15 yd. warp. Do one repeat of each color (2" per color). Repeat across loom. 53 warp ends per color, and a few left over for selvage.

### **REED USED:**

I used a 12 dent reed, and sleyed it 2 ends per dent, so this was threaded 24 ends per inch, 40" wide having 960 total warp ends including selvage.







# drafts and designs

## *a guide for 5 to 12 harness weaves*

Volume 38, Number 7, March, 1996

### **BABY'S RAINBOW:**

Is it going to be a boy or a girl? Here is a fabric that will work for both. This fabric would be perfect for a durable little hooded jacket.

This pattern was inspired by pattern #4 in the *Textiles Far & Wide Series*. Notice how our tie-up and treadling individually controls the darker Copen Blue warp yarns. We are able to skip over and under weft shots without interrupting the plain weave blocks to either side. This gives a zig-zag, zipper-like effect.

### **WARP:**

We used a lively combination of three colors of 6/2 Cotton Pearl Warp: Butter Yellow, Powder Pink and Medium Copen Blue. They have 2520 yds/lb. at \$12.00. This is a tremendous buy for a high-quality mercerized cotton warp. Only about 10 shades remain of this discontinued line special.

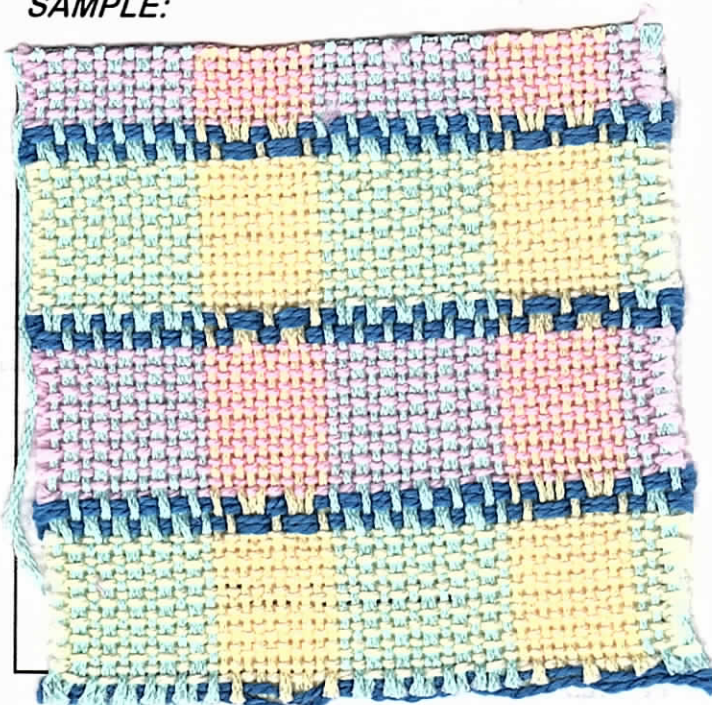
### **REED USED:**

Use a 10 dent reed, sleyed 2 ends per dent — 20 ends per inch (E.P.I.), 800 ends total.

### **WEFT:**

Our weft is two shades of our Brazilian Bolo Fino Cotton: Mint Green and Soft Yellow (1850 yds./lb.) at \$16.00/lb. We selected this cotton for this fabric because of its durable tight twist. A good twist is helpful for keeping weft floats from snagging.

### **SAMPLE:**



### **COST OF THE THREADS USED:**

#### **WARP:**

We wound a 15 yard warp, 40" wide in the reed sett at 20 E.P.I. using 6/2 Cotton (2520 yds/lb.) at \$12.00 per pound:

1 lb., 2520 Yards Copen Blue for \$12.00,  
2 lbs., 5040 yds. Butter Yellow for \$24.00,  
and 2 lbs., 5040 yds. Powder Pink for \$24.00.  
TOTAL WARP COST : \$60.00 or \$4.00/ yd.

#### **WEFT:**

In the weft, we wove 5½ yards, using Bolo Fino Cotton(1850 yd./lb.), at \$16.00/lb:

1 lb.4 oz. of Mint Green at \$20.00 and 12 oz. of Soft Yellow at \$12.00.  
TOTAL WEFT COST: \$32.00 or \$5.82/ yd.

TOTAL FABRIC COST PER YARD: \$9.82





# drafts and designs

## *a guide for 5 to 12 harness weaves*

Volume 38, Number 8, April, 1996

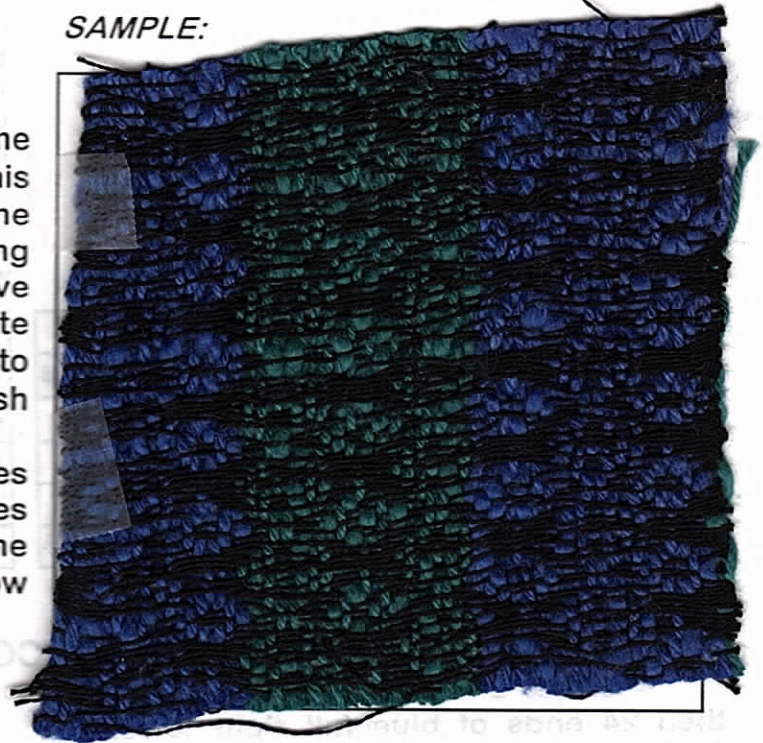
### ***“SAPPHIRES & EMERALDS”***

#### ***in Six Harnesses:***

The threading for this pattern came from Poly Yuri's Blue Book. She intended this to be woven both warp and weft with fine threads. Here we have adapted it using heavier cotton flakes for warp and have eliminated the need for a tabby weft. Note how the weft threads squeezes the warps into donut shapes. The resulting fabric is plush with a flowing drape.

Note that our tie-up and thread makes this weft-faced. Our fine weft thread makes this appear to be a balanced weave on one side. When you turn it over, you can see how the warp dominates.

#### **SAMPLE:**



#### **WARP:**

Our warp has 2 colors of Cotton flake at \$8.00/ lb. and 1400-1500 yds./lb. The colors are True Blue(B) and Spruce Green(G).

#### **WEFT:**

The weft is 20/2 black cotton at \$12.80/lb.and 8400 yds./lb..

#### **REED USED:**

I used a 10 dent reed, and it is double-sleyed, 2 ends per dent, so this is 20 ends per inch (E.P.I).

#### **TREADLING SEQUENCE:**

There are 14 shots for each complete pattern repeat.

Treadle 1,2,3,4,5,6,7,8,7,6,5,4,3,2  
with the 20/2 black cotton.

End of one complete pattern repeat.

*Drafts and Designs* is published monthly, (except July and August), by Robin & Russ Handweavers, Inc. 533 North Adams Street McMinnville, OR 97128

**SUBSCRIPTIONS-** are \$10.00 per year U.S. Canadian and Foreign are \$15.00 per year.

Back Issues in the U.S. are \$1.25 each, plus 55¢ postage, or \$1.80 each. All subscriptions start with the September issue. Call 1-800-WEAVE-91 to subscribe. *NOTE: Due to low current circulation, we are now mailing 3 issues at a time.*

VOLUME 38, Number 8, April, 1996

### THREADING DRAFT:

6							B			B									
5			B			B	B			B					B				B
4	B			B			B	B				B				B			
3						B					B								
2		B	B										B	B					
1	B				B							B							B

### Attention Liturgical Weavers!

We are currently working with Joyce Harter, author of the book: *Weaving that Sings*, along with 5 nationally known professional liturgical weavers to produce a practical and informative documentation of weaving for church and synagogue. The book will be entitled: *Weaving For Worship: The Art and Practice of weaving for church and synagogue by Joyce Harter and Lucy Brusic.*

Combining painstaking research, professional photography, and the cooperation of numerous liturgical weavers, are being combined to create this technical and spiritually inspiring manual. Chapters are dedicated to the symbolism found in the weavings of numerous denominations as well as the techniques used in quality liturgical weaving. Also included are chapters revealing designs for church interiors, altar & wall hangings, stoles & vestments, and tips for becoming a professional liturgical weaver. After years and years of hoping for a reference like this, we are pleased to be part of making it reality!

We are currently seeking additional pieces and liturgical weavers to be featured in *Weaving for Worship*. Please contact us at 1-800-932-8391 if you would like to take part in the creation of this book.

6			G				G											G			G
5	G			G					G			G			G	G			G		
4		G	G				G			G					G	G					
3	G					G									G						G
2									G	G											
1							G					G									

### KEY TO THE THREADING DRAFT:

Thread 24 ends of green as shown, then 24 ends of blue (all right to left). Repeat for width as needed. We did 10 sections of each color, for a total of 480 ends.(24" in the reed).

### COST OF THE THREADS USED:

#### WARP:

We did a 6 1/2 yard warp, 24" wide in the reed sett at 20 E.P.I. using cotton flake(1500 yds./lb. at \$8.00/lb. The cost is the same for either color. The warp came to \$2.56/yd.

### TIE-UP DRAFT:

6						X			X
5				X					
4		X							
3					X			X	
2			X						
1	X								
	1	2	3	4	5	6	7	8	

#### WEFT:

In the weft, we wove 5 yd. 29"(measured off the loom) and used 12oz. of 20/2 black cotton at \$12.80/lb. This came to \$9.60 for the full length or \$1.67/yd.

**TOTAL FABRIC COST PER YARD: \$4.23.**



# drafts and designs

## *a guide for 5 to 12 harness weaves*

Volume 38, Number 9, May 1996

### *Dinner in Denmark:*

This month's sample features an unusual Scandinavian lace weave used as a fancy checkerboard. The resulting table cloth fabric looks ornate and delicate. Yet, it has mostly short floats giving it both strength and practicality.

### *Dig-in!*

#### **WARP:**

Our warp consists of three threads. We used a 36/6 white Bleached Cotton at \$9.60/lb. (5040 yds/lb.) and two 20/2 Mercerized Cottons at \$12.00/lb. (8400 yds./lb.). The Mercerized Cottons are Zoro Black and Sari Teal.

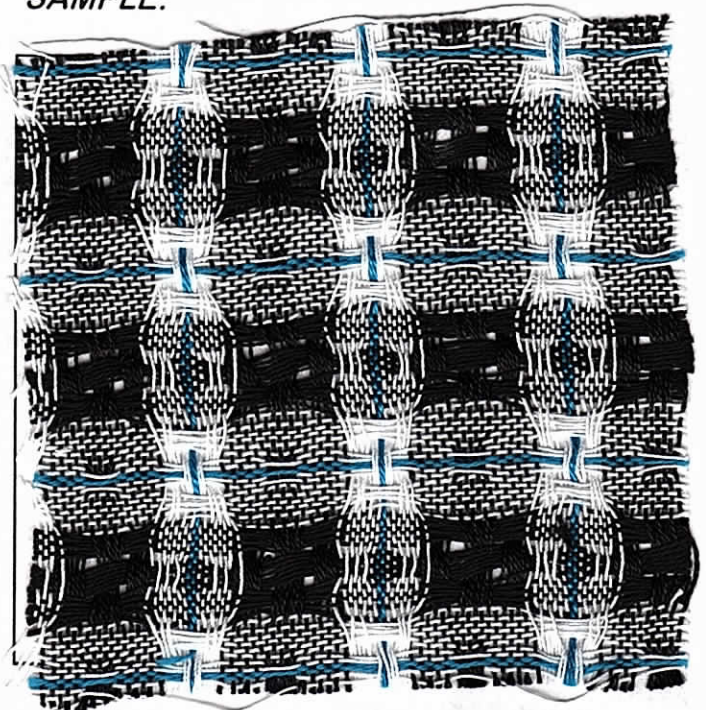
#### **WEFT:**

In our weft we used the same three threads; 36/6 White Bleached Cotton, Zoro Black 20/2 mercerized cotton, and Sari Teal 20/2 mercerized cotton.

#### **REED USED:**

I used a 16 dent reed, and it was double-sleyed, 2 ends per dent, so this was 32 ends per inch (E.P.I). It was 40 $\frac{3}{4}$ " wide at the Reed.

#### **SAMPLE:**



#### **TREADLING SEQUENCE:**

There are 36 shots for each complete pattern repeat.

1. Treadle with the black 1,2,1,2,1,2, 3,4,3,4,3,4, 1,2,1,2,1,2.
2. Treadle with the white 5,6,5,6,5,6,7,8.
3. Treadle with the teal 7,8.
4. Treadle with the white 7,8,5,6,5,6,5,6. End of one complete repeat.

*Do repeat over and over as desired.*

*Drafts and Designs* is published monthly,  
(except July and August), by  
Robin & Russ Handweavers, Inc.  
533 North Adams Street  
McMinnville, OR 97128

**SUBSCRIPTIONS-** are \$10.00 per year U.S.  
Canadian and Foreign are \$15.00 per year.

Back Issues in the U.S. are \$1.25 each, plus  
55¢ postage, or \$1.80 each. All subscriptions start  
with the September issue. Call 1-800-WEAVE-91 to  
subscribe. *NOTE: Due to low current circulation, we  
are now mailing 3 issues at a time.*

VOLUME 38, Number 9, May, 1996

## THREADING DRAFT:

COLOR KEY:

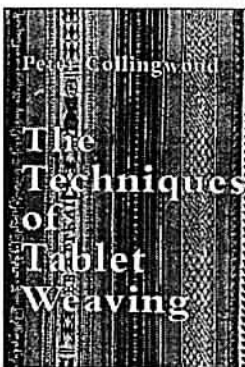
W= 36/6 BLEACHED WHITE    B= 20/2 ZORO BLACK COTTON    T= 20/2 SARA TEAL COTTON

8				W		T		W													
7					W		T		W												
6	W		W		W					W		W		W							
5		W		W		W					W		W		W						
4												B		B		B					
3													B		B		B				
2										B		B		B				B		B	
1											B		B		B				B		B

## TIE-UP DRAFT:

8	X			X	X	X	X		
7		X				X	X		
6	X			X				X	X
5		X			X	X		X	X
4				X	X			X	
3				X	X		X		X
2	X	X				X		X	
1	X	X					X		X
	1	2	3	4	5	6	7	8	

Look what we have just reprinted!



### THE TECHNIQUES OF TABLET WEAVING

by Peter Collingwood - 35.00-P

This 320 page manual presents the most complete instructional and historical documentation of Tablet weaving ever contained in one book. The techniques are categorized into 17 weave structures with chapters devoted to each. Close-up photos, pattern drafts, and step-by-step diagrams illustrate each technique. In addition to providing historical background, text includes concise instruction and helpful hints for reproducing each technique and their variations. Both weavers and collectors alike will benefit from this extensive research.

At last! It's back in print! First printed in 1982, this invaluable reference for cardweavers quickly sold-out. Those lucky few who secured copies of the first edition have been photo-copying and lending their books to cardweaving friends ever since. This revised edition features digitally-enhanced, clearer photos than the first edition.

## COST OF THE THREADS USED:

### WARP:

We did a 15 yard warp, 40¼" wide in the reed sett at 32 E.P.I. using 1 lb.10 ounces of Zoro Black for a cost of \$19.50; 2 ounces of Sari Teal for a cost of \$1.50; and 1 pound 14 ounces of Bleached White for a cost of \$18.00.

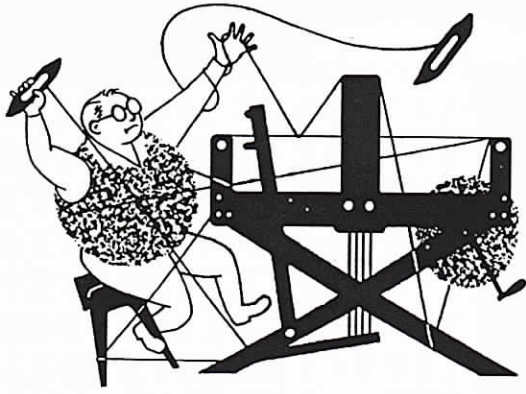
TOTAL WARP COST \$39.00 or \$2.60 /yard.

### WEFT:

In the weft, we wove 6½ yards, using: 9 oz. of Zoro Black for a cost of \$6.75; 1 oz. of Sari Teal for a cost of \$0.75; and 12½ ounces of White bleached cotton for a cost of \$7.50.

TOTAL WEFT COST: \$15.00 for 6½ yds. or \$2.31 per yard.

TOTAL FABRIC COST PER YARD:\$2.31.



# drafts and designs

## *a guide for 5 to 12 harness weaves*

Volume 38, Number 10, June 1996

### ***“DIAMONDS IN THE ROUGH”***

The diamonds' paths through the fabric are “rough” as opposed to having a smooth hand. Since the weft is a grape color, we could say “You can take the straight and narrow path (white and teal) through the vinyard or wander among the grapes”(grape color).

We are situated in the middle of the wine grape growing region of Oregon so perhaps we should call it “Stomping through the Grapes”.

Note that this and May's fabric were both woven on the same warp. It is always fun to be able to make 2 beautiful fabrics on one warp and threading!

### **WARP:**

Our warp consists of three threads. We used a 36/6 White Bleached Cotton (W) at \$9.60/lb. (5040 yds/lb.) and two 20/2 Mercerized Cottons at \$12.00/ lb. (8400 yds./ lb.). The Mercerized Cottons are Zoro Black (B) and Sari Teal(t).

### **WEFT:**

In our weft we used a 5/2 Pima Cotton in Grape at \$16.00/ lb., (2100 yds./lb.)

### **REED USED:**

I used a 16 dent reed, and it was double-sleyed, 2 ends per dent, so this was 32 ends per inch (E.P.I). It was 40 $\frac{3}{4}$ ” wide at the Reed.

### **SAMPLE:**



### **TREADLING SEQUENCE:**

There are 10 shots for each complete pattern repeat.

Treadle with the 5/2 Grape Pima Cotton: 3,4,5,6,7,8,7,6,5,4.

End of one complete repeat.

*Do repeat over and over as desired.*

*Drafts and Designs* is published monthly, (except July and August), by  
 Robin & Russ Handweavers, Inc.  
 533 North Adams Street  
 McMinnville, OR 97128

**SUBSCRIPTIONS-** are \$10.00 per year U.S. Canadian and Foreign are \$15.00 per year.

Back Issues in the U.S. are \$1.25 each, plus 55¢ postage, or \$1.80 each. All subscriptions start with the September issue. Call 1-800-WEAVE-91 to subscribe. *NOTE: Due to low current circulation, we are now mailing 3 issues at a time.*

VOLUME 38, Number 9, June, 1996

**THREADING DRAFT:**

**COLOR KEY:**

W= 36/6 BLEACHED WHITE    B= 20/2 ZORO BLACK COTTON    T= 20/2 SARA TEAL COTTON

8				W	T	W																																
7				W	T	W																																
6	W		W		W						W		W		W																							
5		W		W		W						W		W		W																						
4																		B		B		B																
3																		B		B		B																
2												B		B		B								B		B		B										
1												B		B		B									B		B		B									

**TIE-UP DRAFT:**

8	X		X	X	X	X		
7		X			X	X		
6	X		X				X	X
5		X		X	X		X	X
4			X	X			X	
3			X	X		X		X
2	X	X			X		X	
1	X	X				X		X
	1	2	3	4	5	6	7	8

**Attention Handspinners!**

*Just in from England:*

BABY CAMEL HAIR COMBED TOP  
 \$48/LB. *Very Fine!*

OMEI A.1. BOMBYX SILK COMBED TOP  
 \$40.00/LB. *The best quality silk fiber available!*

MULBERRY BOMBYX SILK BRICK SPECIAL!  
 \$32.00 PER POUND

EXTRA BLEACHED TUSSAH SILK COMBED TOP:  
 \$36/LB. *A shiny rich off-white coloring — beautiful!*

NATURAL TAN TUSSAH SILK COMBED TOP:  
 \$32/LB.

PURE DEHAIRD & CARDED WHITE CASHMERE:  
 \$72/LB.

CARDED WHITE ANGORA RABBIT HAIR: \$32/LB.

FINE WHITE ALPACA COMBED TOP: \$16/LB.

FINE BLACK DEHAIRD & CARDED YAK HAIR  
*It's as fine as Qivuit!* \$32.00/lb.

**COST OF THE THREADS USED:**

**WARP:**  
 We did a 15 yard warp, 40¼" wide in the reed sett at 32 E.P.I. using 1 lb.10 ounces of Zoro Black for a cost of \$19.50; 2 ounces of Sari Teal for a cost of \$1.50; and 1 pound 14 ounces of Bleached White for a cost of \$18.00.

TOTAL WARP COST \$39.00 or \$2.60 /yard.

**WEFT:**  
 In the weft, we wove 6½ yards, using 3 lbs. 4 oz. of 5/2 Pima Cotton in Grape at \$16.00/ lb. for a cost of \$52.00, or \$8.00 a yard.

TOTAL WEFT COST: \$52.00 for 6½ yds. or \$8.00 per yard.

TOTAL FABRIC COST PER YARD: \$10.60.