



---

## DRAFTS AND DESIGNS

Published monthly (except July and August)  
by Robin & Russ Handweavers, 533 North Adams  
St., McMinnville, Oregon.

SUBSCRIPTIONS: \$4.00 per year.  
Back issues or single copies, 50¢ each.  
Yearly subscriptions start with the September issue. If you subscribe after September, back issues from then on will be mailed to you, unless you specify that you want your subscription to start with the next September issue.

VOLUME 6, No. 1.

September, 1963

---

### KEY TO COLORS USED IN THE WARP

O -- Perle 5 or 5/2 Bleached White  
X -- Fine weave 50/3 WHITE Cotton  
B -- Fine Weave 50/3 BLACK Cotton

### TREADLING USED IN SAMPLE:

Treadle # 1--in Black 50/3 cotton  
Treadle # 2--in Black 50/3 cotton  
Treadle # 1--in Black 50/3 cotton  
Treadle # 2--in Black 50/3 cotton  
Treadle # 1--in Black 50/3 cotton  
Treadle # 2--in Black 50/3 cotton  
Treadle # 3--in White 50/3 cotton  
Treadle # 4--in White 50/3 cotton  
Treadle # 3--in White 50/3 cotton  
Treadle # 4--in White 50/3 cotton  
Treadle # 3--in White 50/3 cotton  
Treadle # 4--in White 50/3 cotton

REPEAT THE ABOVE 12 THREADS 3 TIMES so you  
have 36 threads and then continue as listed  
below.

Treadle # 1--in Black 50/3 cotton  
Treadle # 2--in Black 50/3 cotton  
Treadle # 1--in Black 50/3 cotton  
Treadle # 2--in Black 50/3 cotton  
Treadle # 1--in Black 50/3 cotton  
Treadle # 2--in Black 50/3 cotton  
Treadle # 5--in White 5/2 cotton  
Treadle # 6--in White 5/2 cotton  
Treadle # 7--in White 5/2 cotton  
Treadle # 8--in White 5/2 cotton  
Treadle # 5--in White 5/2 cotton  
Treadle # 6--in White 5/2 cotton  
Treadle # 7--in White 5/2 cotton  
Treadle # 8--in White 5/2 cotton  
Treadle # 5--in White 5/2 cotton  
Treadle # 6--in White 5/2 cotton

END OF ONE REPEAT. Repeat over and over.

### MORE ABOUT THIS FABRIC:

This was a very easy to weave fabric and proof of this is found in the fact that there was only one broken thread in the fine 50/3 cotton in 7 yards of warp. The 5/2 was spliced several times in the warp, but this was because the knots in the 5/2 would not go through the 20 dent reed. However, these knots were undone, and a thread woven in so that you could not tell where they had been. There was a 7 yard warp set-up on the loom, and from this we received slightly over 6 yards of finished fabric. Actually, there was about 4 inches over the 6 yards.

I might also suggest that you begin and end your fabric with the 5/2 white on both selvage edges. While it only weaves in on the edges when you are using the 5/2 white in the weft, this will tend to keep your fabric a little wider than it normally would weave if you had the fine weave thread only on the selvages.

I like this fabric as it is unusually light weight, but I can see this same weave adapted to other threads, and making very effective coat material in different textures and different colors of thread. Why don't you try it and see. Even an experimental piece in different colors will give you some of the possibilities of this pattern.

### COST OF THE FABRIC:

The fine weave thread comes in 36 colors that are quite unusual colors. It is \$1.50 per 6,000 yards spool for the white and \$1.80 per each 6,000 yards spool of the colored. The 5/2 white cotton or perle 5 is \$2.35 per 1 lb. cone. It also comes in about 60 colors and the colors are \$2.95 per 1 lb. cone.

In the 7 yard warp, it took 5 oz. of the fine weave in black, and 4 oz. of the fine weave in white for the warp, plus 14 oz. of the 5/2 white. Thus, the warp cost for 7 yards was \$4.25 or breaking it down to the cost per yard, it comes to 60¢ per yd.

In the weft, we used slightly less of each of the three, but not much so we will call the weft cost the same as the warp, i.e., \$4.25. As we had 6 yards of finished fabric, this means the weft per yard came to 70¢ per yard.

WARP COST PER YARD - 40" wide	\$ .60
WEFT COST PER YARD - - - - -	.70
Fabric Cost per Yard 38" wide	\$1.30



# drafts and designs

*a guide for 5 to 12 harness weaves*

Volume # 6, No. 2, October, 1963

**STAGGERING STARS:** This is an interesting 8 harness weave that would make beautiful drapes, excellent bedspreads, and nice tablecloths.

SAMPLE

**WARP:** The warp is the 40/4 bleached white linen. This is exactly the same size as 20/2 linen, having 3,000 yards per lb. However, it is stronger than a 20/2 linen.

**WEFT:** The weft is the 20/2 Natural Ramie. This also has 3,000 yards per lb, and comes on 1 lb. cones.

**REED USED:** A 15 dent reed was used and it was double sleyed, 2 ends per dent, or 30 threads per inch.

**TIE-UP DRAFT:**

8	0	0				0	0	
7	0				0	0		0
6				0	0		0	0
5			0	0		0	0	
4		0	0		0	0		
3	0	0		0	0			
2	0		0	0				0
1		0	0				0	0
	1	2	3	4	5	6	7	8



**THREADING DRAFT:**

8	X		X		X X			X X		X		X			X
7	X		X		X X			X X		X		X			X X
6		X		X		X X		X X		X		X			X X
5		X		X		X X		X X		X		X			X X
4			X		X		X	X		X		X		X X	X X
3			X		X		X	X		X		X		X X	X X
2				X		X		X X		X		X		X X	X X
1					X		X		X		X		X X		X X

## DRAFTS AND DESIGNS

Published monthly (except July and August)  
by Robin & Russ Handweavers, 533 North Adams  
St., McMinnville, Oregon.

SUBSCRIPTIONS: \$4.00 per year.  
Back issues or single copies, 50¢ each.  
Yearly subscriptions start with the September  
issue. If you subscribe after September,  
back issues from then on will be mailed to  
you, unless you specify that you want your  
subscription to start with the next September  
issue.

VOLUME 6, No. 2                      October, 1963

### TREADLING PLAN:

The treadling is given in four lines to  
easier break down the long treadling se-  
quence; and thus make it easier to read, to  
follow, and particularly to keep your place  
while weaving.

### TREADLE AS FOLLOWS:

A--1,2,1,2,3,4,3,4,5,6,7,8,7,6,5,4,3,4,3,2,1,2,1.  
B--8,7,6,5,4,3,2,1,8,7,6,5,4,3,2,1.  
C--8,7,8,7,6,5,6,5,4,3,2,1,2,3,4,5,6,5,6,7,8,7,8.  
D--1,2,3,4,5,6,7,8,1,2,3,4,5,6,7,8.

END OF ONE PATTERN REPEAT. Repeat over and  
over as desired.

### MORE ABOUT THIS FABRIC:

This particular pattern was set up on the  
loom 40" wide. Thus, with 30 threads per  
inch, we had 1200 warp ends.

There were no problems in weaving with  
this linen, except perhaps for one minor one.  
Once in a while, this fine, 4 ply thread will  
break one of the plies. This happened very  
seldom, but if it does, you can either replace  
the thread by hanging one on the back of the  
loom or by using an add a warp clip spool.  
Sometimes, you can weave an inch or two and  
then pull this broken thread forward along with  
the other three, through the reed and then pin  
it to the finished web and proceed.

The pattern in this sample does not show  
up too clearly in the daytime. However, be-  
fore you pass judgment, look at it under  
artificial light and notice how outstanding  
it is then. This is why I think that you  
could perhaps use for weft, a pale beige,  
light yellow, or a light grey or a similar  
color to make the pattern more outstanding.

One thing I should mention about the  
treadling is that it will make a much  
nicer fabric, if you will give a double  
beat to make the fabric a little firmer.  
I would suggest that you beat once; then  
change to the next shed and beat again.  
This will keep the fabric firmer and as  
a result, will give you a more durable  
fabric.

### COST OF THE FABRIC:

This fabric will cost quite a bit  
less than normally it would. The reason  
for this is that the 40/4 BLEACHED WHITE  
LINEN is on sale at \$2.40 per lb. This  
would normally cost from \$4.40 to \$4.80  
per lb. We have perhaps 200 to 250 lbs.  
of this particular thread still available.  
We did have a 20/2 linen in a lemon color  
at the same price, but we had only 100  
lbs. of it, and this has all been sold.

In a 7 yard warp, 40" wide, it took  
2 lbs. 12 oz. of the 40/4 bleached linen  
for warp. Thus the warp cost \$6.60 for  
the 7 yards, or 94¢ per yard.

In the weft, we used 1 lb. 15 oz. of  
the 20/2 natural ramie. The ramie comes  
on 1 lb. cones, and is \$3.20 per lb.  
Thus the weft for 6 yards of finished  
fabric cost \$6.20 in all, or \$1.04 per  
yard.

WARP COST PER YARD....	\$ .94
WEFT COST PER YARD....	1.04
FABRIC COST PER YARD..	\$ 1.98

This is an extremely reasonable price  
for 40" wide fabric of linen and ramie,  
and should be very satisfactory in  
drapes because of the low cost, and the  
wearing abilities of linen and ramie.

### FINISHING THE FABRIC:

The 40/4 linen has quite a tight twist,  
so I would suggest a thorough finishing  
of the fabric before you use it for any-  
thing.

My suggestion is to thoroughly soak  
the fabric in water, and wash with either  
lux or ivory flakes. Allow to drip dry  
until just damp. Then, when still damp,  
or if it has been allowed to dry, be  
sure to dampen, and then press dry with  
a steam iron. The finishing in this way  
draws the fabric together a little more,  
and thus allows the pattern to be more  
distinctive.





# drafts and designs

*a guide for 5 to 12 harness weaves*

---

Volume 6, Number 3, November, 1963

## EMBOSSSED STARS

An 8 harness weave which would make beautiful place-mats, table linens, drapes and bedspreads.

## WARP:

The warp is the 40/4 linen in a bleached white. It is the exact same size as a 20/2 linen, having 3,000 yards per lb. On cones of about 1-3/4 pounds each.

## WEFT:

The weft is the 20/2 natural ramie, which has 3,000 yards per lb., and comes on 1 lb. cones.

## REED USED:

A 15 dent reed was used and it was double sleyed, 2 ends per dent, or 30 threads per inch.

## THREADING DRAFT:

8					X
7	X				X
6	X	X			X
5		X	X		X
4			X	X	X
3			X	X	X
2			X	X	
1				X	

## TREADLING SEQUENCE:

The treadling sequence for this sample is exactly the same as the threading draft. Treadles # 1 through 8 are the

pattern treadles and treadles # 9 and #10 are the plain weave or tabby treadles. Here is the sequence of treadles used:

Treadle: 8,7,6,5,6,5,4,3,4,3,2,1,  
2,3,4,3,4,5,6,4,5,6,7

Repeat over and over.

## SAMPLE



**DRAFTS AND DESIGNS**

Published monthly (except July and August)  
by Robin & Russ Handweavers, 533 North Adams  
St., McMinnville, Oregon.

**SUBSCRIPTIONS:** \$4.00 per year.  
Back issues or single copies, 50¢ each.  
Yearly subscriptions start with the September issue. If you subscribe after September, back issues from then on will be mailed to you, unless you specify that you want your subscription to start with the next September issue.

VOLUME 6, No. 3 November, 1963

**TIE-UP DRAFT:**

8	X	X				X	X		X	
7	X				X	X		X		X
6				X	X		X	X	X	
5			X	X		X	X			X
4		X	X		X	X			X	
3	X	X		X	X					X
2	X		X	X				X	X	
1		X	X				X	X		X
	1	2	3	4	5	6	7	8	9	10
							A	B		

**PLAN FOR PLACE-MATS WITH A TWILL BORDER**

Rt. Side--thread 8 to 1--3x.....24 thds.  
Pattern--17 times.....37 1/4 thds.  
To Balance--add 1 thread on 8..... 1 thd.  
Left Side--thread 1 to 8--3x.....24 thds.  
Total Warp ends.....423 thds.

This is for a place mat which is 3 threads wider than 14" on the loom. To treadle for this mat, you want to treadle as follows:

- Treadle 8 to 1 - 6 times (includes hem)
- Treadle pattern sequence as given earlier until desired length is reached.
- Treadle #8 - 1 time to balance
- Treadle 1 to 8 - 6 times (includes hem)

Try a pastel pink 20/2 linen for warp or a rose colored linen. Use a natural or white ramie or linen 20/2 for weft.

**COST OF THE FABRIC:**

First of all, we wanted to mention that the 40/4 linen warp is not a regular stock

item. It is the same size as a 20/2 linen or ramie, so either of these could be used as warp if desired. The 40/4 linen is on sale at a very low price of \$2.40 per lb. while it lasts. It comes on cones of about 1-3/4 lbs. each.

The weft was the 20/2 natural ramie. This is a regular stock item, having 3000 yards per lb. It is \$3.20 per lb.

In a 7 yard warp, 40" wide, it took 2 lbs. and 12 ounces of the 40/4 bleached linen for warp. Thus the warp cost for 7 yards came to \$6.60 or in cost per yard it was 95¢ per yard.

In the weft, we used 2 lbs. 1 oz. of the 20/2 natural ramie. This was used to weave slightly over 6 yards of fabric, so we will count it as 6 yards. The cost of the weft was \$6.60. Breaking it down to cost per yard, the weft came to \$1.10 per yard.

WARP COST PER YARD, 40" WIDE.... .95  
WEFT COST PER YARD.....1.10  
FABRIC COST PER YARD.....\$2.05

**MORE ABOUT THIS FABRIC:**

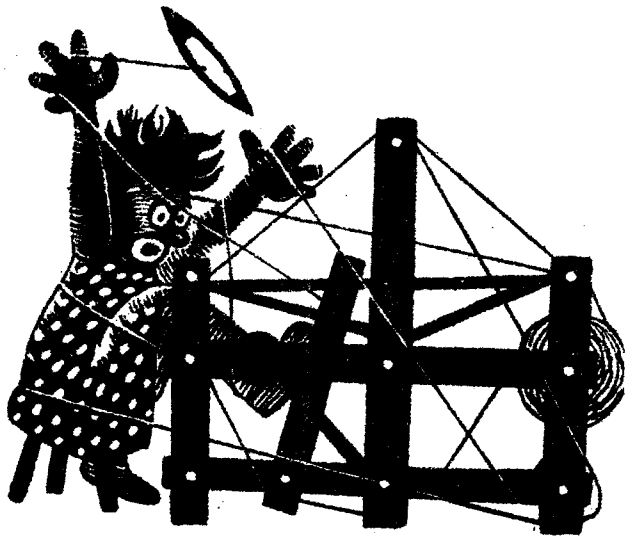
This piece is very easy to weave, and I thought would make excellent bedspreads; drapes or table linens.

Our sample has been washed and pressed, and thus is a little softer and closer together than if it had been taken off the loom and cut for samples. I actually think that a 2nd and 3rd washing will make it softer and richer looking. We washed it in our automatic washing machine in the shortest cycle. Then after allowing it to drip dry, we dampened it again and pressed dry with a steam iron.

I thought that this would be even more striking if you had a pale, pastel colored warp like a light yellow or light beige in a 20/2 linen, and the natural ramie for weft. We have used the white warp because it is available and actually, we should have used a pastel color.

This piece is typical of all linens, in that it is easier to weave if you keep the tension tight when weaving. We almost always find it necessary with linens to have a much tighter tension than when weaving with cotton.

Also, if you weave place-mats of this pattern, the narrower width results in the embossed effect of the pattern being more pronounced.



# drafts and designs

a guide for 5 to 12 harness weaves

VOLUME #6, Issue #4. DECEMBER, 1963

STARFIRE:

An interesting 10 harness Summer and Winter Pattern that would be effective for drapes, upholstery, place-mats and table cloths.

PLAN FOR A 40" WIDE TABLECLOTH

1. Right Border, 8 x 4 = 32 thds.
2. Pattern A to C-12 x = 1104 thds.
3. Pattern A to B--1 x = 30 thds.
4. Left Border, 8 x 4 = 32 thds.

THREADING DRAFT:

TOTAL NUMBER OF WARP ENDS 1198 ends.

	C										B										A   BORDER	
10	X	X									X	X									X	X
9			X							X										X		
8			X	X					X	X								X	X			
7					X				X									X		X		
6					X				X									X		X		
5					X				X									X		X		
4					X	X												X	X			
3					X													X				
2	X		X	X	X	X	X	X	X	X	X		X	X	X	X	X	X	X	X	X	
1	X	X	X	X	X	X	X	X	X	X	X		X	X	X	X	X	X	X	X	X	
	4X										4X											

WARP:

The warp is the 20/2 Egyptian Cotton in a Red color.

WEFT:

Two threads were used in the weft. One was for tabby and the other was for the pattern thread.

The tabby was a 20/2 egyptian cotton in a different red called "Jockey Red."

The pattern thread was the 20/2 Bleached White RAMIE.

Sample on next page

REED USED: A 15 dent reed was used and it was double sleyed, 2 ends per dent or 30 threads per inch.





DRAFTS AND DESIGNS

Published monthly (except July and August) by Robin & Russ Handweavers, 533 North Adams St., McMinnville, Oregon.

SUBSCRIPTIONS: \$4.00 per year. Back issues or single copies, 50¢ each. Yearly subscriptions start with the September issue. If you subscribe after September, back issues from then on will be mailed to you, unless you specify that you want your subscription to start with the next September issue.

VOLUME 6, No. 4 December, 1963

TIE-UP DRAFT:

10											10
9							9				9
8					8						8
7			7		7						7
6				6	6						6
5					5						5
4		4	4	4		4	4				4
3	3					3	3				3
2									2	2	
1								1		1	
	1	2	3	4	5	6	7	8	9	10	11

TREADLING:

In the treadling for this sample, you sometimes have to treadle two treadles at one time. Also, in the plain weave portion of this pattern, I will just mention that you do as much of this as you wish between the stars in white.

1. Treadle # 10 in Jockey Red
2. Treadle # 8 in White Ramie
3. Treadle # 11 in Jockey Red
4. Treadle # 9 in White Ramie

The above 4 treadles are for plain weave. Treadle as much as desired for the border and for the plain weave in between stars.

STAR TREADLING:

1. Treadle # 10 in Jockey Red 20/2.
2. Treadles # 1 & 8 in 20/2 White Ramie
3. Treadle # 11 in Jockey Red 20/2.
4. Treadles # 1 & 9 in 20/2 White Ramie
5. Treadle # 10 in Jockey Red 20/2.
6. Treadles # 2 & 8 in 20/2 White Ramie
7. Treadle # 11 in Jockey Red 20/2
8. Treadles # 2 & 9 in 20/2 White Ramie
9. Treadle # 10 in Jockey Red 20/2
10. Treadles # 2 & 8 in 20/2 White Ramie

11. Treadle #11 in Jockey Red 20/2
  12. Treadles #2 & 9 in 20/2 White Ramie
  13. Treadle #10 in Jockey Red 20/2
  14. Treadles #3 & 8 in 20/2 White Ramie
  15. Treadle #11 in Jockey Red 20/2
  16. Treadles #3 & 9 in 20/2 White Ramie
  17. Treadle #10 in Jockey Red 20/2
  18. Treadles #4 & 8 in 20/2 White Ramie
  19. Treadle #11 in Jockey Red 20/2
  20. Treadles #4 & 9 in 20/2 White Ramie
  21. Treadle #10 in Jockey Red 20/2
  22. Treadles #5 & 8 in 20/2 White Ramie
  23. Treadle #11 in Jockey Red 20/2
  24. Treadles #5 & 9 in 20/2 White Ramie
  25. Treadle #10 in Jockey Red 20/2
  26. Treadles #6 & 8 in 20/2 White Ramie
  27. Treadle #11 in Jockey Red 20/2
  28. Treadles #6 & 9 in 20/2 White Ramie
  29. Treadle #10 in Jockey Red 20/2
  30. Treadles #7 & 8 in 20/2 White Ramie
  31. Treadle #11 in Jockey Red 20/2
  32. Treadles #7 & 9 in 20/2 White Ramie
  33. Treadle #10 in Jockey Red 20/2
  34. Treadles #6 & 8 in 20/2 White Ramie
  35. Treadle #11 in Jockey Red 20/2
  36. Treadles #6 & 9 in 20/2 White Ramie
  37. Treadle #10 in Jockey Red 20/2
  38. Treadles #5 & 8 in 20/2 White Ramie
  39. Treadle #11 in Jockey Red 20/2
  40. Treadles #5 & 9 in 20/2 White Ramie
  41. Treadle #10 in Jockey Red 20/2
  42. Treadles #4 & 8 in 20/2 White Ramie
  43. Treadle #11 in Jockey Red 20/2
  44. Treadles #4 & 9 in 20/2 White Ramie
  45. Treadle #10 in Jockey Red 20/2
  46. Treadle # 3 & 8 in 20/2 White Ramie
  47. Treadle #11 in Jockey Red 20/2
  48. Treadles #3 & 9 in 20/2 White Ramie
  49. Treadle #10 in Jockey Red 20/2
  50. Treadles #2 & 8 in 20/2 White Ramie
  51. Treadle #11 in Jockey Red 20/2
  52. Treadles #2 & 9 in 20/2 White Ramie
  53. Treadle #10 in Jockey Red 20/2
  54. Treadles #2 & 8 in 20/2 White Ramie
  55. Treadle #11 in Jockey Red 20/2
  56. Treadles #2 & 9 in 20/2 White Ramie
  57. Treadle #10 in Jockey Red 20/2
  58. Treadles #1 & 8 in 20/2 White Ramie
  59. Treadle #11 in Jockey Red 20/2
  60. Treadles #1 & 9 in 20/2 White Ramie
- End of star.

COST OF THE FABRIC:

WARP COST PER YARD - 40" wide....	\$ .83
WEFT COST PER YARD.....	1.55
<u>FABRIC COST PER YARD</u>	<u>\$2.38</u>



# drafts and designs

*a guide for 5 to 12 harness weaves*

Volume 6, Number 5, January, 1964

SPOTS BEFORE YOUR EYES

An unusual and interesting 8 harness weave of all wool, that could be used for upholstery. It would also make very attractive place-mats or table linens in different materials. In a finer, light weight material, you could use it in dress material.

WARP

The warp thread was a 15/2 worsted yarn, color #124, Dark Brown.

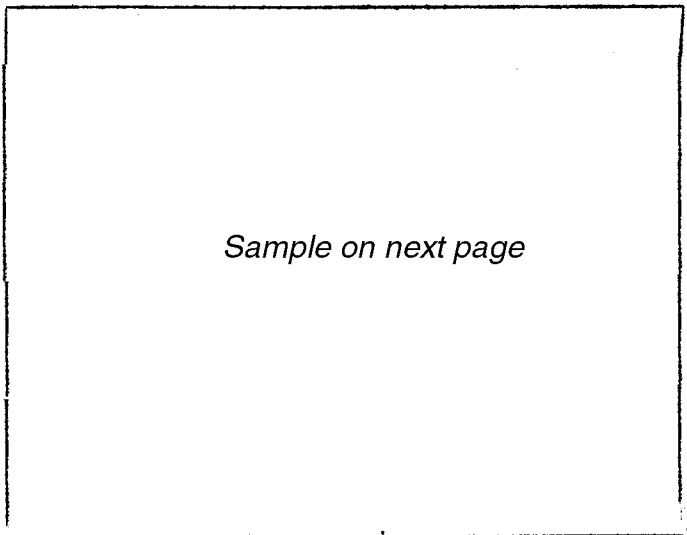
WEFT

Three colors were used in the weft. They were color #124, Dark Brown; color #114, Cardinal; and color #95, Red.

THREADING DRAFT:

	A selv.															
8	8	8	8	8	8	8	8	8	8	8	8	8	8	8	8	8
7	7	7	7	7	7	7	7	7	7	7	7	7	7	7	7	7
6	6	6	6	6	6	6	6	6	6	6	6	6	6	6	6	6
5	5	5	5	5	5	5	5	5	5	5	5	5	5	5	5	5
4	4	4	4	4	4	4	4	4	4	4	4	4	4	4	4	4
3	3	3	3	3	3	3	3	3	3	3	3	3	3	3	3	3
2	2	2	2	2	2	2	2	2	2	2	2	2	2	2	2	2
1	1	1	1	1	1	1	1	1	1	1	1	1	1	1	1	1

SAMPLE:



*Sample on next page*

selv. B

8	8														
7	7														
6	6														
5	5														
4	4	4	4	4	4	4	4	4	4	4	4	4	4	4	4
3	3	3	3	3	3	3	3	3	3	3	3	3	3	3	3
2	2	2	2	2	2	2	2	2	2	2	2	2	2	2	2
1	1	1	1	1	1	1	1	1	1	1	1	1	1	1	1

REED USED:

A 15 dent reed was used, and it was double sleyed, 2 ends per dent or 30 threads per inch.



## DRAFTS AND DESIGNS

Published monthly (except July and August) by Robin & Russ Handweavers, 533 North Adams St., McMinnville, Oregon.

SUBSCRIPTIONS: \$4.00 per year.  
Back issues or single copies, 50¢ each.  
Yearly subscriptions start with the September issue. If you subscribe after September, back issues from then on will be mailed to you, unless you specify that you want your subscription to start with the next September issue.

VOLUME 6, NO. 5

JANUARY, 1964

### TREADLING FOR THIS PATTERN:

There are 3 red blocks in this pattern, and you must alternate the two colors of red used, Cardinal and Red. However, I will give the treadling and just list it all as red, and you can adjust the colors you use according to the alternate blocks, or you can make them all one color if you wish.

Treadle #1, Red  
Treadle #2, Brown  
Treadle #3, Brown  
Treadle #9, Brown  
Treadle #10, Brown  
Treadle #4, Red  
Treadle #5, Brown  
Treadle #6, Brown  
Treadle #9, Brown  
Treadle #10, Brown  
Repeat 4 Times

Treadle #7, Brown  
Treadle #8, Brown  
Treadle #9, Brown  
Treadle #10, Brown  
Repeat 8 times

Treadle #1, Brown  
Treadle #2, Red  
Treadle #3, Brown  
Treadle #9, Brown  
Treadle #10, Brown  
Treadle #4, Brown  
Treadle #5, Red  
Treadle #6, Brown  
Treadle #9, Brown  
Treadle #10, Brown  
Repeat 4 times

Treadle #7, Brown  
Treadle #8, Brown  
Treadle #9, Brown  
Treadle #10, Brown  
Repeat 8 times

Treadle #1, Brown  
Treadle #2, Brown  
Treadle #3, Red  
Treadle #9, Brown  
Treadle #10, Brown  
Treadle #4, Brown  
Treadle #5, Brown  
Treadle #6, Red  
Treadle #9, Brown  
Treadle #10, Brown  
Repeat 4 times

Treadle #7, Brown  
Treadle #8, Brown  
Treadle #9, Brown  
Treadle #10, Brown  
Repeat 8 times

Start from beginning and repeat over and over.

### MORE ABOUT THIS FABRIC:

Several different selvages were tried out and none of them proved to be satisfactory. We do not promise that the selvage given here will be satisfactory either, but it is about the best we could work out. That which will give us a very good edge when weaving the colored blocks, will not give a good selvage edge in the areas between the spots.

We also feel that there are many other uses for this pattern other than the sample woven herewith. I think it could be used with finer threads like 20/2 cotton for dress material, or with linens for place-mats and table cloths. Why don't you try it and see what you can do with the threading draft and with different threads.

### TIE-UP DRAFT:

8	X		X	X		X				X
7	X		X	X		X			X	
6	X	X		X	X					X
5	X	X		X	X				X	
4		X	X		X	X				X
3		X	X		X	X			X	
2				X	X	X		X	X	
1	X	X	X				X		X	
	1	2	3	4	5	6	7	8	9	10

### COST AND AVAILABILITY OF YARNS USED

The 2/15's worsted yarns used in this sample were furnished to us by LILY MILLS COMPANY, SHELBY, NORTH CAROLINA.

The 2/15's worsted has 4200 yards per pound. It comes on 2 oz. tubes, and is priced at \$6.40 per lb. It comes in 38 different colors. This can be also purchased from ROBIN & RUSS HANDWEAVERS, as we are distributors of all of Lily's Hand Weaving Products at their regular prices. You may purchase as little as 2 ounces of any of these colors if desired.

### COST OF THIS FABRIC

For 7 yard warp, 40" wide, it took 1 lb. 14 oz. of Dk. Brown Worsted at \$6.40 per lb. Warp Cost \$1.72 per yard.

Weft took 2 oz. Cardinal, 2 oz. red, 1 lb. 14 oz. dark brown. Weft cost for 6½ yards was \$2.09 per yard.

FABRIC COST PER YARD, 38" Wide - \$3.81.





# drafts and designs

*a guide for 5 to 12 harness weaves*

VOLUME #6, ISSUE #6, FEBRUARY, 1964

A TWO BLOCK DAMASK WEAVE:

This is a true, 2 block, 10 harness damask weave. The two threads with the extreme contrast in color and texture make it quite interesting.

TIE-UP DRAFT:

10				0					0	
9	0					0				
8			0					0		
7					0					0
6		0					0			
5	0		0	0	0				0	
4	0	0	0	0		0				
3	0	0		0	0			0		
2		0	0	0	0					0
1	0	0	0		0		0			
	1	2	3	4	5	6	7	8	9	10

*Sample on next page*

WARP USED:

The warp used is the 40/2 bleached white Ramie (same as 40/2 linen) and this has 6,000 yards per lb., and comes on 1 lb. cones.

THREADING DRAFT:

	D	C		B	A
10		10		10	
9		9		9	
8		8		8	
7		7		7	
6		6		6	
5				5	5
4				4	4
3				3	3
2				2	2
1				1	1
	←5 X→		← Five Times →		

WEFT USED:

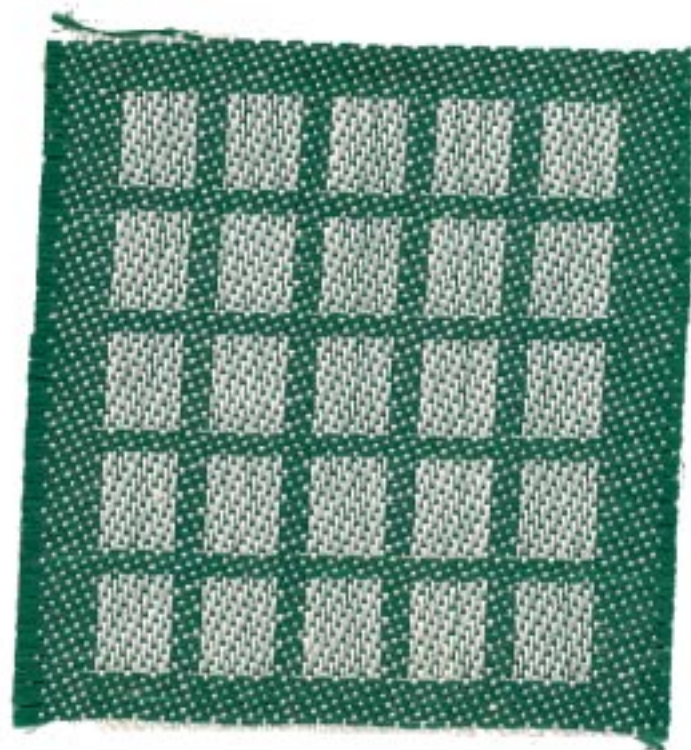
The weft thread was a fast dyed rayon thread called No. 600 Rayon. The color we used was called Myrtle Green. This thread has 7400 yards per lb.

REED USED:

The reed used was a 12 dent reed, and it was triple sleyed, 3 ends per dent, or 36 threads per inch.

TREADLING SEQUENCE:

- A. For border and hem, you treadle #6, #7, #8, #9 and #10 as long as desired.
- B. Treadle 1,2,3,4,5---four times and then treadle 6,7,8,9,10--one time. Repeat this until you have 5 white squares or blocks of damask. (cont.)





# drafts and designs

a guide for 5 to 12 harness weaves

VOLUME #6, ISSUE #7, MARCH, 1964

## GOLD DIAMONDS

An interesting 8 harness huck weave woven in an overshot manner. Would make excellent drapery, tablecloths, table linens.

### WARP

The warp is 20/2 bleached ramie (same as 20/2 linen) in bleached white. It is available on 1 lb. cones, 3,000 yards per cone.

### WEFT

Two threads were used in the weft. The pattern thread was a fairly heavy gold thread supported with rayon and comes on about 1/2 lb. spools.

The other weft thread was a tabby thread and was the 40/2 bleached ramie used as tabby.

### REED USED

A 15 dent reed was used, and it was double sleyed, 2 ends per dent, or 30 threads per inch.

### THREADING DRAFT:

8											X	
7				X				X				
6			X							X		
5		X									X	
4	X										X	
3												X
2		X	X		X	X		X	X		X	X
1	X		X	X		X	X		X	X		X

### SAMPLE

*Sample on next page*





DRAFTS AND DESIGNS

Published monthly (except July and August) by Robin & Russ Handweavers, 533 North Adams St., McMinnville, Oregon.

SUBSCRIPTIONS: \$4.00 per year. Back issues or single copies, 50¢ each. Yearly subscriptions start with the September issue. If you subscribe after September, back issues from then on will be mailed to you, unless you specify that you want your subscription to start with the next September issue.

VOLUME 6, NO. 7

March, 1964

TIE-UP DRAFT:

8	X	X	X	X	X			X
7	X	X	X	X		X	X	
6	X	X	X		X			X
5	X	X		X		X	X	
4	X		X		X			X
3				X		X	X	
2		X		X		X		X
1	X		X		X		X	
	1	2	3	4	5	6	A	B

TREADLING SEQUENCE:

First of all, be sure to use a fine tabby of 40/2 ramie or 40/2 linen between each pattern shot. Here is the sequence just for the pattern treadles.

- Treadle #1 -- 4 times with gold
- Treadle #2 -- 3 times with gold
- Treadle #3 -- 3 times with gold
- Treadle #4 -- 3 times with gold
- Treadle #5 -- 3 times with gold
- Treadle #6 -- 4 times with gold
- Treadle #5 -- 3 times with gold
- Treadle #4 -- 3 times with gold
- Treadle #3 -- 3 times with gold
- Treadle #2 -- 3 times with gold

End of one pattern repeat. Repeat over and over as desired. On your last pattern repeat, be sure to end by treadling #1 - 4 times with your gold metallic to balance the pattern.

MORE ABOUT THIS PATTERN:

I thought that this was a very interesting huck variation, and that it would make excellent tablecloths, drapery, place-mats, etc. I have used gold for the pattern thread here, but you could use many other

things. For instance you could use a 16/2 ramie or a 20/2 linen in color for the pattern, and the fine 40/2 ramie or linen for the tabby. To make a little softer fabric, you could use a 16/1 ramie or a 20/1 linen for tabby. However, I sometimes find that the 16/1 or 20/1 is not always perfectly smooth, and as a result, sometimes a slightly slubby effect results in your fabric if you use the 16/1 or 20/1 for tabby.

This is actually very close to an over-shot weave on a huck threading. This is just one of the many ways that you can vary huck weaves on 8 harnesses.

We set up a 40 1/2" wide warp, 8 yards long, and from this we received 7 yards exactly of finished material.

THREADING FOR TABLECLOTH 40-2/3" WIDE

- 1. Rt. Selv, 1,8,7,6,5,4,3,2.....8 thds.
  - 2. Pattern 40 x 30 threads....1200 thds.
  - 3. To balance-1,2,3,2,1.....5 thds.
  - 4. Lt. Selv, 2,3,4,5,6,7,8,1.....8 thds.
- TOTAL NUMBER OF WARP ENDS.....1221 thds.

THREADING FOR MATS, 14-2/3" WIDE

- 1. Rt. Selv, 1,8,7,6,5,4,3,2.....8 thds.
  - 2. Pattern 14 x 30 threads....420 thds.
  - 3. To balance-1,2,3,2,1.....5 thds.
  - 4. Lt. Selv, 2,3,4,5,6,7,8,1.....8 thds.
- TOTAL NUMBER OF WARP ENDS.....441 thds.

COST OF THREADS USED:

- 1. The 20/2 Bleached Ramie is \$3.20 per pound, on 1 pound cones.
- 2. The 40/2 Bleached Ramie is \$4.50 per pound, on 1 lb. cones.
- 3. The heavier gold supported with rayon is \$2.00 per spool, and there is about 6 oz. of metallic on each spool.

COST OF THE FABRIC:

WARP: It took 3 lbs. 2 oz. of 20/2 Bleached Ramie for 8 yards of 40-2/3" wide warp. This comes to \$10.00 for 8 yards or \$1.25 per yard.

WEFT: It took 3 spools of gold metallic for 7 yards of finished fabric, costing \$6.00. It took 12 oz. of 40/2 Bleached Ramie, this coming to \$3.37. The total weft cost for 7 yards was \$9.37, or \$1.34 per yard.

WARP COST PER YARD- 40-2/3" wide...\$1.25

WEFT COST PER YARD..... 1.34

FABRIC COST PER YARD.....\$2.59



# drafts and designs

*a guide for 5 to 12 harness weaves*

VOLUME 6, Number 8, April, 1964

## PARQUETRY

An exciting 6 harness pattern that reminds us of a piece of parquetry or wood inlay. This would be excellent for upholstery material, and for many decorative uses.

## WARP

The warp is a 10/2 Brown Cotton, with 4200 yards per lb.

## WEFT

There are three threads used in the weft. Two of them are carpet warp in gold and yellow. This is 8/4 in size with 1600 yards per lb. The gold and the yellow carpet warp are both wound together on one bobbin.

The other weft thread is a 12 cut rayon chenille in an aqua blue color. This thread is not always available, but is very striking in a use like this.



## THREADING DRAFT:

	SELV.	B		A	SELV.
6	X		X	X	X
5	X		X	X	X
4	X		X X X		X
3	X		X X X		X
2	X	X X X			X
1	X	X X X		X	

## REED USED

A 12 dent reed was used, and it was double sleyed, 2 ends per dent or 24 threads per inch.

## DRAFTS AND DESIGNS

Published monthly (except July and August) by Robin & Russ Handweavers, 533 North Adams St., McMinville, Oregon.

SUBSCRIPTIONS: \$4.00 per year.  
Back issues or single copies, 50¢ each.  
Yearly subscriptions start with the September issue. If you subscribe after September, back issues from then on will be mailed to you, unless you specify that you want your subscription to start with the next September issue.

VOLUME 6, Number 8, April, 1964

### TREADLING SEQUENCE

Treadle #3 -- gold & yellow  
Treadle #4 -- gold & yellow  
Treadle #3 -- gold & yellow  
Treadle #1 -- aqua blue chenille  
Treadle #2 -- aqua blue chenille  
Treadle #3 -- aqua blue chenille  
Treadle #2 -- aqua blue chenille  
Treadle #1 -- aqua blue chenille

End of one repeat. Repeat over and over as desired.

### MORE ABOUT THIS FABRIC

We have a 6 harness threading here, and really have not taken advantage of the extra two harnesses as we could have done.

On a weave of this type, you could have two blocks or units staggered with one color, and surrounded entirely with another color. With the addition of each two harnesses, you could have or add another block or unit which resembles a honeycomb. This could be staggered to make 3 combs in a row on 8 harnesses.

However, the sample as we wove it, is quite interesting, and we hope that you enjoy it.

We wove on our original sample about 6 quite interesting samples, and we hope to share with you in later issues, some of the different effects that were achieved.

One thing that is most important in this fabric, particularly if it is to be used for upholstery, is that it should be beat very tightly, and you should even use a double beat or a triple beat.

Still another fact of interest is the use of the chenille in this sample. In this type of weave the pattern is achieved by some of the weft threads bunching up at regular intervals to create a scalloped effect. If you use something like we did in the chenille, it tends to slip together and pack tighter than many stiffer threads would, and thus, is much more satisfactory for this type of effect. Most of the soft perle cottons would be excellent for this use, but a stiffer thread like a plied linen or very tightly twisted cotton would not be too satisfactory.

### TIE-UP DRAFT

6		0		0		0	
5	0		0		0		
4	0		0	0		0	
3		0	0	0	0		
2	0	0	0				0
1	0	0		0	0		
	1	2	3	4	5	6	
				A	B		

Tie-up above for jack-type looms. 5 and 6 and A and B are the tabby treadles, and some persons call them 5 and 6, and others call them A & B.

### COST OF THREADS IN WARP AND WEFT

The 10/2 cotton in brown that we used for warp is \$3.50 per lb. on one pound cones. It also comes in about 70 other colors, and it has 4200 yards per lb.

The carpet warp used in the weft is size 8/4, comes on 1/2 lb. spools of 800 yards each, and they cost \$1.06 per spool. These are sold to us as fast colors, so you should have no problems with it.

The rayon chenille, 12 cut, is not always available in colors. We can always get it in a natural white, and it sells for \$4.40 per lb. in the natural white.

However, we found a small lot of colors in the 12 cut rayon chenille, so the aqua blue used in this sample is \$3.50 per lb., or \$1.75 per 1/2 pound spool. We also have it in stock at present in a rose, and in a creamy yellow.



# drafts and designs

*a guide for 5 to 12 harness weaves*

VOLUME #6, Issue #9, May, 1964

## SWIRLING QUEUES

An interesting 8 harness weave in all wool, which is excellent for suiting, coat material and the like. Notice that there is a sort of swirl effect in the pattern which would be much more pronounced if you would use the same two colors for both warp and weft.

## THREADING DRAFT

8	0			X
7		0		X
6			0	X
5				X
4			0	X
3				X
2			0	X
1				X

## WARP COLOR KEY

X - Lavender, 2/18's Worsted, Fabri  
0 - Dark Navy, 2/18's Worsted, Fabri

## WARP:

The warp is Bernat's 2/18's worsted yarn, called Fabri in two colors as is given above.

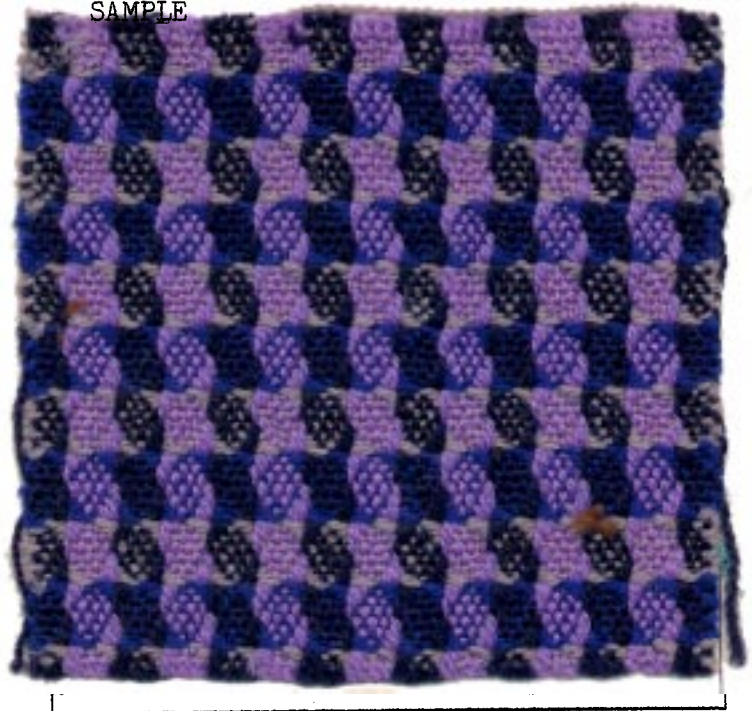
## WEFT

The weft is also Bernat's 2/18's worsted, Fabri, in two additional colors. The colors used in the weft were the Grey fabri and also the Royal Blue fabri.

## REED USED

A 15 dent reed was used, and it was double sleyed, 2 ends per dent, or 30 threads per inch.

## SAMPLE



## MORE ABOUT THIS FABRIC:

This sample is an easy one to weave, and the threading and treadling sequence gives you some indication of this.

I do think that the pattern would stand out much more if we had just used two colors in the fabric instead of four as we did. In other words, you should use the same two colors in both the warp and the weft. When you do this, the swirling queues show up much more.

On this sample, we had a selvage of 12 threads of a nylon about the same weight as



DRAFTS AND DESIGNS

Published monthly (except July and August) by Robin & Russ Handweavers, 533 North Adams St., McMinnville, Oregon.

SUBSCRIPTIONS: \$4.00 per year. Back issues or single copies, 50¢ each. Yearly subscriptions start with the September issue. If you subscribe after September, back issues from then on will be mailed to you, unless you specify that you want your subscription to start with the next September issue.

VOLUME #6, Issue #9, May, 1964

the wool. We had twelve threads on each selvage edge, and on an 8 harness loom this would be threaded on the right 5,6,7,8,1,2,3,4,5,6,7,8. On the left, it would be threaded 1,2,3,4,5,6,7,8,1,2,3,4.

I might also mention that you can also (if you have 10 harnesses) thread a selvage on harnesses 9 and 10 of 12 threads, and tie up harness 9 to treadles 1,3,5,7, and tie up harness 10 to treadles 2,4,6,8, and this would also make easier weaving.

Also the selvage was not wound on the beam with the wool warp, but was on spools and wrapped around the warp beam one time and then hung from the back. Thus you can keep a different tension on your selvage edge. If wound on the beam with your wool, because of the elasticity of the wool, the selvage threads would gradually become loose and cause problems.

There were only 5 broken threads in this 8 yard warp, and this was due entirely to the 5 knots that appeared in the warp.

This sample was suggested by a piece from a travelling exhibition of the Foothill Weavers of Pasadena, California. However, a similar pattern also appeared recently in Handweaver & Craftsman.

TREADLING SEQUENCE:

The treadling is a simple progression of 1 to 8 using the grey fabri, color #2792, and then a second progression of treadles 1 to 8 using the Royal Blue fabri, color #2750.

- Treadle: 1,2,3,4,5,6,7,8 - Grey
- Treadle: 1,2,3,4,5,6,7,8 - Royal Blue

TIE-UP DRAFT:

8					0	0	0	0
7				0		0	0	0
6			0		0		0	0
5		0		0		0		0
4	0		0		0		0	
3	0	0		0		0		
2	0	0	0		0			
1	0	0	0	0				
	1	2	3	4	5	6	7	8

COST OF THREADS USED:

The fabri comes in 45 different colors on 2 oz. skeins. It is \$6.80 per lb. in 1 lb. of a color, or it is \$1.00 per 2 oz. skein if less than 1 lb. of a color is purchased. It has 4800 yards per lb., or 600 yards per 2 ounce skein.

COST OF FABRIC:

An 8 yard warp was made and it was 40" wide, 30 threads per inch. In the warp, it took 1 lb. of the Dark Navy Fabri and 1 lb. 1 ounce of the Lavender Fabri. Thus the warp cost for 8 yards was \$14.03 for this amount. Breaking it down to cost per yard, it comes to \$1.75 per yard.

In the weft, we used 12 ounces of Grey Fabri, and 12 ounces of Royal Blue Fabri. We received 6 yards and 21" of fabric from the 8 yard warp. The total weft cost was \$10.20, and the weft cost per yard was \$1.57.

WARP COST PER YARD.....	\$1.75
WEFT COST PER YARD.....	1.57
FABRIC COST PER YARD.....	\$3.32

EDITOR'S NOTE:

The April and May issues are mailed together this month. Because of two conferences within one month and because of a ten day workshop, things have gotten far behind. We will try and see that this does not happen again. At least, we hope that it does not happen again, soon. Hope you will excuse the delay.

Russell E. Groff



# drafts and designs

a guide for 5 to 12 harness weaves

Volume 6, Number 10, June, 1964

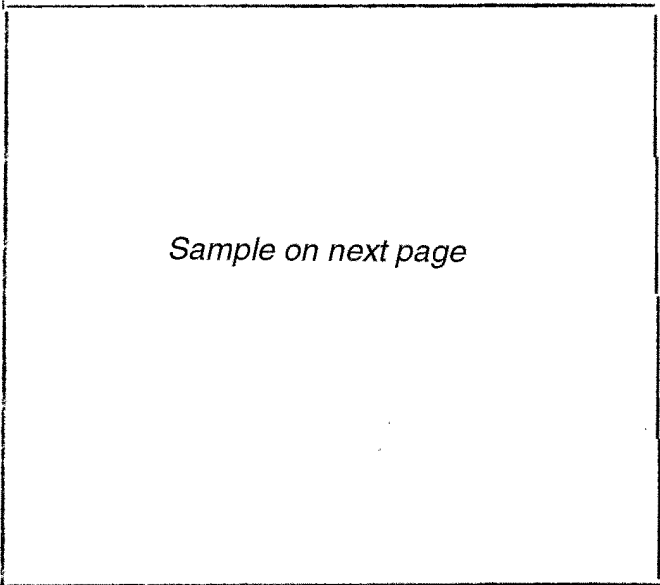
NORWEGIAN HONEYCOMB:

An unusual honeycomb weave that is an 8 harness point twill with the honeycomb being achieved by the combination of unusual tie-up and treadingling sequence.

TIE-UP DRAFT:

8						0		
7						0		0
6				0		0		
5			0			0		0
4			0		0		0	0
3		0		0		0	0	0
2	0		0		0	0	0	0
1		0		0	0	0	0	0
	1	2	3	4	5	6	7	8

SAMPLE:



THREADING DRAFT:

8				0				X											X
7	0				0	0				0	X								X
6		0				0	0				0	X							X
5			0				0					0	X						X
4				0				0					0	X					X
3					0	0			0	0				X					X
2						0	0							X	X				
1							0												X

WARP THREADS USED:

A size 20/2 linen was used in the warp in two colors. One of these was the 20/2, natural or oyster colored linen. The other color was a bright skipper blue.

KEY TO COLORS IN THREADING DRAFT:

- X - 20/2 linen in skipper blue
- 0 - 20/2 linen in oyster

REED USED:

A twelve dent reed was used and the warp threads were triple sleyed, or 3 ends per dent, or 36 threads per inch.



## DRAFTS AND DESIGNS

Published monthly (except July and August) by Robin & Russ Handweavers, 533 North Adams St., McMinnville, Oregon.

**SUBSCRIPTIONS:** \$4.00 per year.  
Back issues or single copies, 50¢ each.  
Yearly subscriptions start with the September issue. If you subscribe after September, back issues from then on will be mailed to you, unless you specify that you want your subscription to start with the next September issue.

Volume 6, Number 10, June, 1964

### WEFT USED:

In the weft, we used a different size linen than in the warp. We used a 10/1 linen as the weft thread, so that the resulting fabric would weave a little tighter or pack in a little tighter, and also, when washed several times, it would have a much softer feeling.

### TREADLING SEQUENCE:

The treadling sequence is exactly the same as the threading. In color sequence, the colors are reversed. Where we used natural in the warp, you weave with skipper blue, and where we had skipper blue in the warp, you weave with natural. Here is the treadling sequence.

- A. Treadle 8,7,6,5,4,3,2,1,2,3,4,5,6,7,8 in 10/1 oyster or natural linen.
  - B. Treadle 7,6,5,4,3,2,1,2,3,4,5,6,7,8,7,6,5,4,3,2,1,2,3,4,5,6,7 in skipper blue.
- End of one repeat. Repeat over and over.

### COST OF THREADS IN THIS FABRIC:

1. The 20/2 oyster or natural linen comes on 1 lb. cones, and is \$4.00 per lb.
2. The 20/2 Skipper Blue linen comes on 1 lb. cones and is \$6.10 per lb.
3. The 10/1 natural linen comes on 1 lb. cones and is \$3.70 per lb.
4. The 10/1 skipper blue linen comes on 1 lb. cones and is \$5.30 per lb.

This linen may also be purchased on 2 oz. spools if desired. It is about 75¢ per pound more expensive than on the 1 lb. cones. All of these threads are available from Robin & Russ Handweavers.

### COST OF THE FABRIC:

We had an 8 yard warp, 40" wide. It took 2 lbs. 14 oz. of the oyster linen and 1 lb. 6 oz. of the skipper blue linen for warp. Thus the warp cost of this was \$19.88 for the 8 yards or \$2.48 per yard. In the weft, we used 9 ounces of the oyster linen and 1 lb. 6 oz. of the skipper blue linen. This was the 10/1 linen and the total cost of the weft was \$9.37. We received about  $6\frac{1}{2}$  yards of finished material from the 8 yard warp, so the cost per yard of weft in  $6\frac{1}{2}$  yards of finished material comes to \$1.44.

WARP COST PER YARD.....	\$2.48
WEFT COST PER YARD.....	1.44
<u>FABRIC COST PER YARD.....</u>	<u>\$3.92</u>

### MORE ABOUT THIS FABRIC:

This fabric is somewhat like some of our old Colonial American hand woven pieces in that it has a long float in the warp and weft. This did not seem to bother some of the early Colonial weavers, and when made of linen, did not seem to bother the pieces themselves as some have been preserved for several hundred years in perfect condition.

The only problem that came up in the weaving of this fabric was this problem of long float threads. As they float and do not weave in, they become looser and looser and tend to spoil the way the shed should open up. However, we were able to weave this 8 yard warp without too much trouble, but I imagine that if you had a longer warp, you would have to cut it off about every 8 yard length and tighten up the tension on the float threads by re-tieing your warp. If you wanted to weave a longer length than this, you would have to have a double warp beam to compensate for these float threads.

Also, one other thing that we noticed was that there seemed to be quite a difference in size of the two different colored warp threads. The skipper blue linen appeared heavier than the oyster linen, and it is my belief that this was caused by the dyeing of the linen this skipper blue color. In soaking in the dye, I feel that the linen absorbs the color and becomes thicker and also perhaps it might lose a little of the tighter twist, and thus become a thicker thread.