



drafts and designs

a guide for 5 to 12 harness weaves

Volume 8, Number 1, September, 1965

DOUBLE FOUR SQUARE

This is an interesting 6 harness basket weave with a surface pattern for use in upholstery or drapery. It could be adapted for many other uses with the proper choice of color, texture and materials.

WARP - There are two threads used in the warp. They are 10/2 mercerized bottle green cotton, and a perle 5 cotton, mercerized, in black.

WEFT - There are four threads used in the weft. The same two threads as used in the warp are two of them, and for the white surface design, we used a rayon boucle with cotton as one thread, and the 2nd thread was a spiral twist rayon boucle and gold. These latter two threads were wound together on one bobbin and used as a single weft thread to create the pattern.

REED USED - A 15 dent reed was used with a special sleying of the reed.

THREADING DRAFT

6	X	X	X		X	X	X													
5	X	X	X		X	X	X													
4	X	X	X		X	X	X													
3	X	X	X		X	X	X													
2				0	0			XX	XX	XX	XX	XX	XX	XX	XX	XX	XX	XX	XX	XX
1								XX	XX	XX	XX	XX	XX	XX	XX	XX	XX	XX	XX	XX

Sample on next page

SPECIAL SLEYING OF REED - There are 46 threads of bottle green and then two threads of black repeated over and over throughout the pattern. The bottle green are sleyed 2 ends per dent, and then the black perle 5 is single sleyed one end per dent.



DRAFTS AND DESIGNS

Published monthly (except July and August) by Robin & Russ Handweavers, 533 North Adams St., McMinnville, Oregon.

SUBSCRIPTIONS: \$4.00 per year. Back issues or single copies, 50¢ each. Yearly subscriptions start with the September issue. If you subscribe after September, back issues from then on will be mailed to you, unless you specify that you want your subscription to start with the next September issue.

Volume 8, Number 1, September, 1965

KEY TO THREADS IN THREADING DRAFT:

- O - Perle 5, mercerized black cotton
- X - 10/2, mercerized bottle green cotton

TIE-UP DRAFT

6	0		0			0	
5	0			0	0		0
4		0			0	0	
3		0			0		0
2	0		0	0		0	
1		0	0	0	0		0
	1	2	3	4	5	6	7

TREADLING SEQUENCE:

- 1. Treadle #1 - 10/2 green doubled
 - 2. Treadle #2 - 10/2 green doubled
- Then repeat 1 & 2 above a total of 7 times or until you have 14 threads.

- 3. Treadle #1 - 10/2 green doubled
 - 4. Treadle #4 - 2 boucles together
 - 5. Treadle #2 - 10/2 green doubled
 - 6. Treadle #3 - 2 boucles together
 - 7. Treadle #1 - 10/2 green doubled
 - 8. Treadle #2 - 5/2 black doubled
 - 9. Treadle #1 - 10/2 green doubled
 - 10. Treadle #3 - 2 boucles together
 - 11. Treadle #2 - 10/2 green doubled
 - 12. Treadle #4 - 2 boucles together
 - 13. Treadle #1 - 10/2 green doubled
 - 14. Treadle #2 - 10/2 green doubled
- End of One Pattern Repeat. Repeat Over and Over as Desired.

MORE ABOUT THE FABRIC:

Remember, as this is a basket weave, all of the weft threads are doubled or that is, 2 ends are wound together. This means that the two different boucles are wound together as one thread, and that the 10/2 bottle green and the 5/2 perle cotton in black are both doubled or two ends wound together on one bobbin.

This fabric is actually quite easy to weave, and should present no unusual problems in the weaving. I think that your main problem will be the doubling of the two threads, and making sure that you have no loops when you do wind two ends together. When you are winding the two ends together, if you can put them under a slight tension, you will find that you obtain better results than if you wind directly from two cones.

Also, another thing that I noticed is that no matter how hard I beat, when I was doing the portion with the white surface pattern, I could never beat it as tightly as when I was weaving the bottle green area of plain weave.

However, I do suggest on this fabric you use a firm, double beat for both the pattern area and the plain weave area.

COST OF THE FABRIC

We had a warp, 43-1/2" wide, and 7 yards long. It took 2 lbs. 2 oz. of the bottle green cotton for warp. It also took 2 oz. of the black perle 5 mercerized cotton. The bottle green cotton is \$3.50 per lb. and the 5/2 black cotton is \$3.40 per lb. Thus the total cost for 7 yards of warp, 43-1/2" wide was \$7.92. The warp cost per yard was \$1.13 per yard.

In the weft we used 1 lb. 10 oz. of the bottle green. We used 2 oz. of the 5/2 black mercerized cotton. We used 13 oz. of the rayon & cotton boucle and 14 oz. of the spiral twist rayon boucle with gold. All this came to \$11.60 for the cost of the weft threads and we had SIX YARDS OF FINISHED FABRIC. Thus the weft cost per yard was \$1.93 per yard.

WARP COST PER YARD, 43-1/2" Wide \$1.13
WEFT COST PER YARD..... 1.93
FABRIC COST PER YARD, 40" WIDE \$3.06

COST AND FACTS OF THREAD USED. The 10/2 bottle green has 4200 yards per lb., comes on 1 lb. cones, and is \$3.50 per lb. The perle 5 black may be purchased on 2 oz. spools, with 260 yards per spool, and is 49¢ per spool.

The natural spiral twist rayon boucle with gold twist comes on 1/2 lb. cones, and is \$3.20 per lb. It has about 1500 yards per lb.

The natural, rayon and cotton boucle has 1400 yards per lb., and is \$3.20 per lb. It comes on 1 lb. cones.



drafts and designs

a guide for 5 to 12 harness weaves

VOLUME 8, NUMBER 2, OCTOBER, 1965

SHADOWS AND DIAMONDS

This interesting 8 harness shadow weave is woven of silk and ramie, an unusual combination of material.

WARP

Two threads were used in the warp. One was the 6/2 spun douppioni silk in olive green, with 5,000 yards per lb.

The other thread was the 20/2 mercerized ramie, size 20/2, color turquoise blue with 3,000 yards per lb.

WEFT

The same two threads used in the warp were also used as the weft threads in this fabric.

REED USED

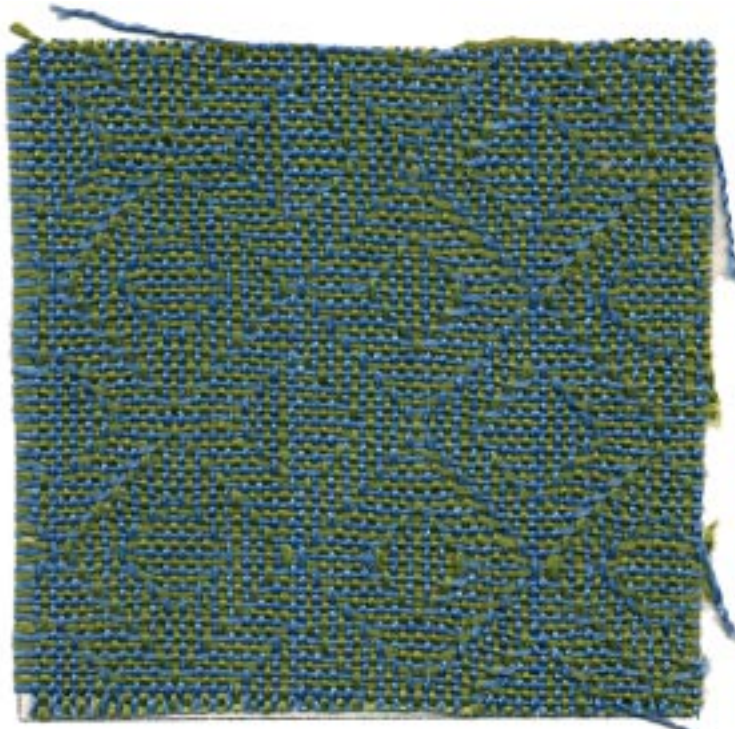
A 12 dent reed was used and it was double sleyed, 2 ends per dent or 24 threads per inch.

THREADING DRAFT

8	X	0	0	X	0	X	0	X	0
7	X	0	0	X	0	X	X	X	0
6	X	0	0	X	0	X	X	X	0
5	X	0	X	0	0	X	X	0	0
4	0	X	X	0	X	0	0	0	X
3	0	X	X	0	X	0	0	0	X
2	0	X	X	0	X	0	0	0	X
1	0	X	X	0	X	0	0	X	0

THREADING DRAFT COLOR KEY:

X - 20/2 Mercerized Ramie, Turquoise Blue
0 - 6/2 Douppioni Silk, Olive Green



MORE ABOUT THIS FABRIC:

When this fabric was finished, it was quite stiff because of the ramie. Robin

DRAFTS AND DESIGNS

Published monthly (except July and August)
by Robin & Russ Handweavers, 533 North Adams
St., McMinnville, Oregon.

SUBSCRIPTIONS: \$4.00 per year.
Back issues or single copies, 50¢ each.
Yearly subscriptions start with the September
issue. If you subscribe after September,
back issues from then on will be mailed to
you, unless you specify that you want your
subscription to start with the next September
issue.

VOLUME 8, NUMBER 2, OCTOBER, 1965

washed it in the washing machine with just
warm water, a very, very short cycle, and
then the extractor was used to extract the
water. Then she pressed it on both sides
with a dry iron (it was still moist from the
washing), and then it was a beautiful soft,
and yet crisp fabric and would make very nice
suiting material. It could also be used for
drapery as it has the right properties of
being soft and yet crisp for drapes.

I wish that you could see the whole piece
instead of just this sample, as it is quite
unusual in the whole piece.

This is an unusual combination of materials,
and yet I thought that it had some pleasing
results.

The weaving is simple, and yet slow because
of the fact that you have to alternate every
other shot in color. It is somewhat similar
to weaving an overshot with a tabby.

TIE-UP DRAFT

8				0	0	0	0	
7			0	0	0	0		
6		0	0	0	0			
5	0	0	0	0				
4	0	0	0	0				
3	0	0	0					0
2	0	0					0	0
1	0					0	0	0
	1	2	3	4	5	6	7	8

COST OF THREADS IN THE FABRIC

The 20/2 Mercerized Ramie comes on either
4 oz. spools or 1 lb. cones. It is \$5.00 per
lb., or \$1.25 per 4 oz. spool with 3,000 yards
per lb.

The 6/2 spun douppioni silk has 5,000 yards
per lb. It is a 4 ply thread, so is excellent
for warp or for weft. It is \$7.00 per lb. or
\$2.00 per 4 oz. spool.

In the mercerized ramie, there are 10
different colors available, and in the 6/2
silk, we have about 8 different colors in
stock.

A FREE SAMPLE SHEET OF THE MERCERIZED
RAMIE AND THE 6/2 SILK WILL BE SENT TO YOU
UPON REQUEST.

COST OF THE FABRIC

In the warp, 40" width, 7 yards long,
it took 1 lb. 2-1/2 oz. of the 20/2 Turq-
quoise Blue Ramie; and it took 12-1/2 oz.
of the 6/2 douppioni silk for warp. Thus
the total warp cost was \$11.25 or the cost
per yard was \$1.61.

In the weft, we used 1 lb. of the tur-
quoise blue ramie, and 11 oz. of the olive
green silk. The total cost of the weft
was \$9.84, and we had 5 yards and 30 inches
of finished fabric.

WARP COST PER YARD.....	\$1.61
WEFT COST PER YARD.....	1.69
FABRIC COST PER YARD....	<u>\$3.30</u>

TREADLING SEQUENCE

1. Treadle #5, Turq. Blue Ramie
2. Treadle #1, 6/2 Olive Green
3. Treadle #6, Turq. Blue Ramie
4. Treadle #2, 6/2 Olive Green
5. Treadle #7, Turq. Blue Ramie
6. Treadle #3, 6/2 Olive Green
7. Treadle #8, Turq. Blue Ramie
8. Treadle #4, 6/2 Olive Green
9. Treadle #1, Turq. Blue Ramie
10. Treadle #5, 6/2 Olive Green
11. Treadle #2, Turq. Blue Ramie
12. Treadle #6, 6/2 Olive Green
13. Treadle #3, Turq. Blue Ramie
14. Treadle #7, 6/2 Olive Green
15. Treadle #4, Turq. Blue Ramie
16. Treadle #8, 6/2 Olive Green
17. Treadle #5, Turq. Blue Ramie
18. Treadle #8, 6/2 Olive Green
19. Treadle #4, Turq. Blue Ramie
20. Treadle #7, 6/2 Olive Green
21. Treadle #3, Turq. Blue Ramie
22. Treadle #6, 6/2 Olive Green
23. Treadle #2, Turq. Blue Ramie
24. Treadle #5, 6/2 Olive Green
25. Treadle #1, Turq. Blue Ramie
26. Treadle #4, 6/2 Olive Green
27. Treadle #8, Turq. Blue Ramie
28. Treadle #3, 6/2 Olive Green
29. Treadle #7, Turq. Blue Ramie
30. Treadle #2, 6/2 Olive Green
31. Treadle #6, Turq. Blue Ramie
32. Treadle #1, 6/2 Olive Green

END OF ONE REPEAT. REPEAT OVER AND OVER AS
DESIRED.



drafts and designs

a guide for 5 to 12 harness weaves

Volume 8, Number 3, November, 1965

TAYSKUVIKAS: This is an 8 harness Summer and Winter weave, with 3 tie-down threads instead of the usual 2 tie-downs. This FINNISH word, translated, means ALL-OVER PATTERN.

WARP: 20/2 Cotton Lavender - Blue.

WEFT: There are two threads in the weft which are as follows:

1. The black thread is 3 ends of a 12/1 Black silk all wound together on one bobbin to act as one thread.
2. The blue is a 12 cut rayon chenille.

REED USED: A 15 dent reed was used and it was double sleyed, 2 ends per dent, or 30 threads per inch.

THREADING DRAFT: We are going to give you three repeats of the threading draft because the tie down threads in each repeat change, so you can actually call the three repeats one threading draft, but it will give you three repeats of the pattern. Remember, read from right to left on each of the three units of the draft.

COST OF THE THREADS USED: The warp thread of 20/2 Egyptian Cotton in Lavender is \$5.50 per lb., and comes on 1/2 lb. spools with 8400 yards per lb.

The black silk which we tripled comes on about 1 lb. cones, and is priced at \$4.00



per lb. If you wish it tripled, we charge 50¢ per lb. extra for doing this.

The 12 cut rayon chenille in blue is \$3.50 per lb., on 1/2 lb. tubes. Different colors in this are available from time to time, but there is no consistent standard line of colors available. Write for samples if you desire to see what is available in the 8 cut and 12 cut chenille. About 15 colors are available at present.

DRAFTS AND DESIGNS

Published monthly (except July and August) by Robin & Russ Handweavers, 533 North Adams St., McMinnville, Oregon.

SUBSCRIPTIONS: \$4.00 per year. Back issues or single copies, 50¢ each. Yearly subscriptions start with the September issue. If you subscribe after September, back issues from then on will be mailed to you, unless you specify that you want your subscription to start with the next September issue.

Volume 8, Number 3, November, 1965

THREADING DRAFT:

8	X X	X X	X X	X X
7	X X	X X	X X	X X
6	X X	X X	X X	X X
5	X X	X X	X X	X X
4	X X	X X	X X	X X
3	X	X	X	X
2	X	X	X	X
1	X	X	X	X

Second Repeat

First Repeat

TIE-UP DRAFT

8	0	0	0	0	0	0	0	0	0	0
7	0	0	0	0	0	0	0	0	0	0
6	0	0	0	0	0	0	0	0	0	0
5	0	0	0	0	0	0	0	0	0	0
4	0	0	0	0	0	0	0	0	0	0
3	0	0	0	0	0	0	0	0	0	0
2	0	0	0	0	0	0	0	0	0	0
1	0	0	0	0	0	0	0	0	0	0

A B 1 2 3 4 5 6 7 8 9 10 11

8	X X	X X
7	X X	X X
6	X X	X X
5	X X	X X
4	X X	X X
3	X	X
2	X	X
1	X	X

↑ End Third Repeat

Once again, the pattern is the same in each of the three repeats, but the tie-downs change. You could use a profile draft and thread from a profile, if you remember and use the correct tie-down sequence. Here is the profile draft.

PROFILE DRAFT

8	8
7	7
6	6
5	5
4	4

Each number in the profile draft above represents 4 threads; two of them pattern and two of them tie-downs, with the tie-downs changing from harnesses 3 to 2 and to 1 in sequence, over and over.

TREADLING SEQUENCE: The treadling sequence is long and exacting, but essential in order to get your pattern correct.

TREADLING FOR SMALL FIGURE:

1. Treadle 1 & 10 together - blue c.
2. Treadle 1 & 11 together - black s.
3. Treadle 2 & 10 together - blue c.
4. Treadle 2 & 11 together - black s.

This makes the pointed end of the small figure.

5. Treadle 3 & 8 together - blue c.
6. Treadle 3 & 9 together - black s.
7. Treadle 1 & 8 together - blue c.
8. Treadle 1 & 9 together - black s.
9. Treadle 2 & 8 together - blue c.
10. Treadle 2 & 9 together - black s.

Repeat #5 through #10, 4 times or a total of 24 threads to make the main body of the small figure.

11. Treadle 3 & 10 together - blue c.
12. Treadle 3 & 11 together - black s.
13. Treadle 1 & 10 together - blue c.
14. Treadle 1 & 11 together - black s.

These last 4 threads make the other point-

ed end of the small figure.

START OF THE LARGE FIGURE

15. Treadle 2 & 4 together - blue c.
16. Treadle 2 & 5 together - black s.
17. Treadle 3 & 4 together - blue c.
18. Treadle 3 & 5 together - black s.

This is the start or point of the large figure. (4 threads)

19. Treadle 1 & 6 together - blue c.
20. Treadle 1 & 7 together - black s.
21. Treadle 2 & 6 together - blue c.
22. Treadle 2 & 7 together - black s.
23. Treadle 3 & 6 together - blue c.
24. Treadle 3 & 7 together - black s.

Repeat #19 through 24 - a total of 7 times or 42 threads. Then:

25. Treadle 1 & 6 together - blue c.
26. Treadle 1 & 7 together - black s.

This ends the center of the large figure.

Then the last 4 threads of the point of the large figure are:

27. Treadle 2 & 4 together - blue c.
28. Treadle 2 & 5 together - black s.
29. Treadle 3 & 4 together - blue c.
30. Treadle 3 & 5 together - black s.

THIS IS THE END OF ONE PATTERN REPEAT.

There are a total of 84 threads in one pattern repeat.



drafts and designs

a guide for 5 to 12 harness weaves

Volume 8, Number 4, December 1965

SIX (6) HARNESS PIQUE:

This sample is an interesting sample of a 6 harness pique, one of the unusual techniques that you seldom see woven on a handloom.

WARP USED:

Two threads were in the warp, as you see from the draft above. Those marked X were a 2/16's worsted yarn in Crimson Red which has 4200 yards per lb. The 0's were the 20/2 Black Egyptian cotton.

WEFT USED:

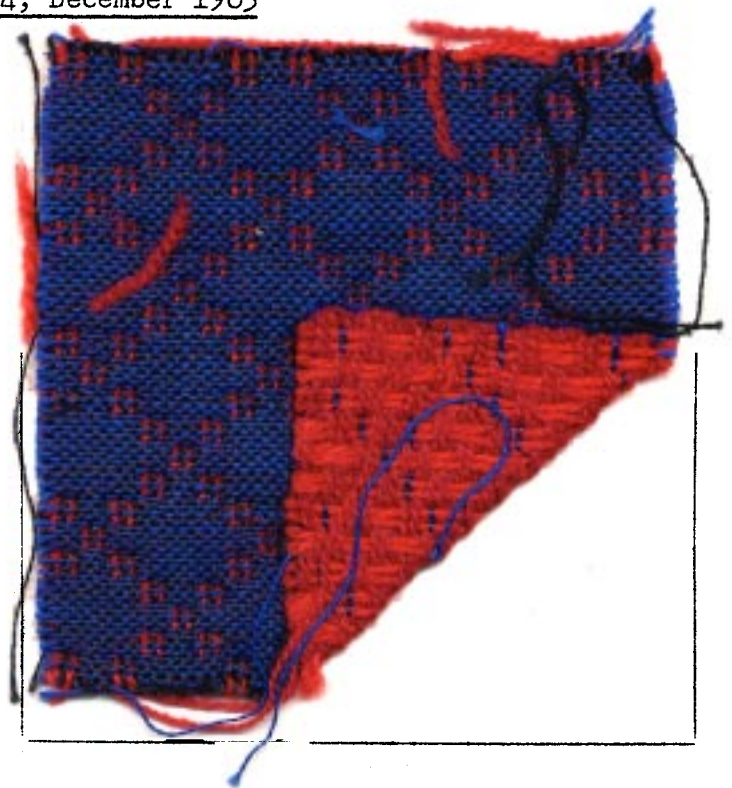
There were also two threads in the weft. One was a royal blue egyptian cotton, size 20/2, and the other was the 2/16's worsted yarn in Crimson Red. When we ran out of the Crimson Red in the 2/16's worsted, we finished the sample using a 2/18's Fabri in the color called Crimson.

THREADING DRAFT:

6					X	X											
5			X	X			X	X									
4	X	X							X	X							
3											X	X					
2	0	0	0	0	0	0	0	0	0	0	0	0	0	0	0	0	0
1	0	0	0	0	0	0	0	0	0	0	0	0	0	0	0	0	0

KEY TO THREADS IN THREADING DRAFT:

- X - 2/16's WORSTED, in Crimson Red
- 0 - 20/2 Black Egyptian Cotton



REED USED:

A 12 dent reed was used, and it was triple sleyed, with 2 ends of 20/2 black egyptian cotton, and one end of the 2/16's Crimson Red Worsted in each dent. Thus, the set was 36 threads per inch.

DRAFTS AND DESIGNS

Published monthly (except July and August)
by Robin & Russ Handweavers, 533 North Adams
St., McMinnville, Oregon.

SUBSCRIPTIONS: \$4.00 per year.
Back issues or single copies, 50¢ each.
Yearly subscriptions start with the September
issue. If you subscribe after September,
back issues from then on will be mailed to
you, unless you specify that you want your
subscription to start with the next September
issue.

Volume 8, Number 4, December, 1965

TIE-UP DRAFT:

6				0			0	
5			0					0
4		0					0	
3	0							0
2					0	0	0	0
1	0	0	0	0		0	0	0
	1	2	3	4	5	6	7	8

TREADLING SEQUENCE:

1. Treadle #1 - 20/2 Blue Egy. Cotton
2. Treadle #5 - 20/2 Blue Egy. Cotton
3. Treadle #6 - 2/16's Crimson Worsted
4. Treadle #7 - 2/16's Crimson Worsted
- REPEAT THESE 4 A SECOND TIME (8 thds.)
5. Treadle #2 - 20/2 Blue Egy. Cotton
6. Treadle #5 - 20/2 Blue Egy. Cotton
7. Treadle #6 - 2/16's Crimson Worsted
8. Treadle #8 - 2/16's Crimson Worsted
- REPEAT THESE 4 A SECOND TIME (8 thds.)
9. Treadle #3 - 20/2 Blue Egy. Cotton
10. Treadle #5 - 20/2 Blue Egy. Cotton
11. Treadle #6 - 2/16's Crimson Worsted
12. Treadle #7 - 2/16's Crimson Worsted
- REPEAT THESE 4 A SECOND TIME (8 thds.)
13. Treadle #4 - 20/2 Blue Egy. Cotton
14. Treadle #5 - 20/2 Blue Egy. Cotton
15. Treadle #6 - 2/16's Crimson Worsted
16. Treadle #8 - 2/16's Crimson Worsted
- REPEAT THESE 4 A SECOND TIME (8 thds.)
17. Treadle #3 - 20/2 Blue Egy. Cotton
18. Treadle #5 - 20/2 Blue Egy. Cotton
19. Treadle #6 - 2/16's Crimson Worsted
20. Treadle #7 - 2/16's Crimson Worsted
- REPEAT THESE 4 A SECOND TIME (8 thds.)
21. Treadle #2 - 20/2 Blue Egy. Cotton
22. Treadle #5 - 20/2 Blue Egy. Cotton
23. Treadle #6 - 2/16's Crimson Worsted
24. Treadle #8 - 2/16's Crimson Worsted
- REPEAT THESE 4 A SECOND TIME (8 thds.)

This is the end of one repeat. There
are actually 48 threads in one repeat.

MORE ABOUT THIS FABRIC:

You want to use a firm, double beat
in the weaving of such a fabric. It
will help define the red diamond pique
if you do this.

Also, we used a worsted yarn in the
crimson color as the thread to form the
pique and a cotton as the main back-
ground. It was our thought that if we
did this, there would be a little more
shrinkage in the worsted and this should
make the raised effect a little more dis-
tinct if the fabric is washed.

It is actually the crimson wool warp
thread that does the tying together or
the quilting of the two fabrics. The
crimson weft threads nearly interlace
with the red warp threads to make a
better back to the fabric, and to make
more of a pile effect.

Most double weave fabrics are rather
slow to weave, and this one is no ex-
ception. This is particularly true, be-
cause we used a fine 20/2 egyptian cot-
ton. If we had used a heavier thread,
of course, it would have been a little
faster.

I should also mention that we used a
double warp beam in this fabric. We do
not have a double warp beam on our mul-
tiple harness loom, so we just backed
up another loom next to the multiple
harness one and used the two warp beams
back to back. The black cotton was
warped on the multiple harness loom, and
the Crimson Red worsted was warped on
another loom warp beam. These were tak-
en together and put onto one loom, even
though the warp came from the beams of
two looms.

One more thing that I should empha-
size about this fabric is the fact that
the tighter your red tie-down threads
are on this fabric, the puffier the dia-
monds will be.

COST OF THE FABRIC

We used 14 oz. of the black 20/2
Egyptian in a 7 yard warp. This costs
\$5.50 per lb. We used 14 oz. of the
2/16's Crimson worsted, and this costs
\$8.00 per lb., and comes on 2 oz. spools.
Thus, the warp cost for 7 yards of warp
was \$11.82.

In the weft, we used 13 oz. of the
20/2 blue egyptian cotton, and 1 lb. 6 oz.
of wool. Thus the total weft cost was
\$15.48.

DRAFTS AND DESIGNS

Published monthly (except July and August) by Robin & Russ Handweavers, 533 N. Adams St., McMinnville, Oregon.

SUBSCRIPTIONS: \$4.00 per year.

Back issues or single copies, 50¢ each. Yearly subscriptions start with the Sept. issue. If you subscribe after Sept., back issues from then on will be mailed to you, unless you specify that you want your subscription to start with the next Sept. issue.

VOLUME 8, Number 5, January 1966

TIE-UP DRAFT:

8		0		0		0		0
7	0		0		0		0	
6		0		0		0	0	
5	0		0		0			0
4		0		0	0			0
3	0		0			0		0
2		0	0		0		0	
1	0			0		0		0
	1	2	3	4	5	6	7	8

TREADLING SEQUENCE:

1. Treadle #7 - Golden Brown Ramie
2. Treadle #8 - Honey Dew Maize Ramie
3. Treadle #7 - Golden Brown Ramie
4. Treadle #8 - Honey Dew Maize Ramie
5. Treadle #5 - Golden Brown Ramie
6. Treadle #6 - Honey Dew Maize Ramie
7. Treadle #5 - Golden Brown Ramie
8. Treadle #6 - Honey Dew Maize Ramie
9. Treadle #3 - Golden Brown Ramie
10. Treadle #4 - Honey Dew Maize Ramie
11. Treadle #3 - Golden Brown Ramie
12. Treadle #4 - Honey Dew Maize Ramie
13. Treadle #1 - Golden Brown Ramie
14. Treadle #2 - Honey Dew Maize Ramie
15. Treadle #1 - Golden Brown Ramie
16. Treadle #4 - Honey Dew Maize Ramie
17. Treadle #3 - Golden Brown Ramie
18. Treadle #4 - Honey Dew Maize Ramie
19. Treadle #3 - Golden Brown Ramie
20. Treadle #6 - Honey Dew Maize Ramie
21. Treadle #5 - Golden Brown Ramie
22. Treadle #6 - Honey Dew Maize Ramie
23. Treadle #5 - Golden Brown Ramie
24. Treadle #8 - Honey Dew Maize Ramie
25. Treadle #7 - Golden Brown Ramie
26. Treadle #8 - Honey Dew Maize Ramie
27. Treadle #7 - Golden Brown Ramie
28. Treadle #2 - Golden Brown Ramie
29. Treadle #1 - Honey Dew Maize Ramie
30. Treadle #4 - Golden Brown Ramie
31. Treadle #3 - Honey Dew Maize Ramie
32. Treadle #6 - Golden Brown Ramie

33. Treadle #5 - Honey Dew Maize Ramie
 34. Treadle #8 - Golden Brown Ramie
 35. Treadle #7 - Honey Dew Maize Ramie
 36. Treadle #8 - Golden Brown Ramie
 37. Treadle #5 - Honey Dew Maize Ramie
 38. Treadle #6 - Golden Brown Ramie
 39. Treadle #3 - Honey Dew Maize Ramie
 40. Treadle #4 - Golden Brown Ramie
 41. Treadle #1 - Honey Dew Maize Ramie
 42. Treadle #2 - Golden Brown Ramie
- END OF ONE PATTERN REPEAT. REPEAT OVER AND OVER AS DESIRED.

MORE ABOUT THIS FABRIC:

This fabric was washed in an automatic washing machine using the full cycle of washing and extracting. It was put in the dryer for about 10 minutes, and then steam pressed.

We felt that this was necessary, as it seemed quite open when it came off the loom. Because of the fact it was so open, I would like to suggest that you use a firm, double beat. Beat after you throw the shuttle, change to the next treadle and then beat again.

I don't think that this sample will show to good advantage in the sample attached, but in a full piece of yardage, it is very attractive and would make excellent yardage for drapes.

Also, you could set this at 30 threads per inch, use a firm double beat, and you might like this a little better. However, if you do this, the weft will not pack in as tightly, and the pattern will be enlarged slightly.

COST OF THE THREADS USED:

This mercerized ramie comes on 1 lb. cones and 4 oz. spools in size 20/2 only, and has 3,000 yards per lb. It is \$5.00 per lb., or \$1.25 per 4 oz. spool. There are 10 different colors available at present, and a free sample sheet will be sent upon your request.

COST OF THE FABRIC:

We had a warp, 40" wide, and 7½ yards in length. It took 1 lb. 3 oz. of the 20/2 Golden Brown Ramie and 1 lb. 1½ oz. of the Honey-Dew Maize for the 7½ yard warp. Thus the warp cost was \$1.52 per yard for the 7½ yards.

We received about 6½ yards of finished fabric from this 7½ yard warp. It took 13½ oz. of each of the two colors for weft in the 6½ yards. Thus the weft cost was \$1.30 per yard.

WARP COST PER YARD..... \$ 1.52
WEFT COST PER YARD..... 1.30

FABRIC COST PER YARD, 40" WIDE \$ 2.82



drafts and designs

a guide for 5 to 12 harness weaves

VOLUME 8, NUMBER 6, FEBRUARY 1966

SPRING-GREEN -An interesting extended point twill in an 8 harness weave, which would be excellent for upholstery, drapery and for table-linens.

WARP - The warp is a 20/2 Mercerized Ramie in a color called "MEADOW GREEN".

WEFT - The weft is a size 20/2 linen, un-mercerized, in a Light Green Color.

REED USED - 15 dent reed was used, and it was double-sleyed, 2 ends per dent, or 30 threads per inch.

FIRST TIE-UP -- EASIEST WEAVING RESULTS WHEN YOU USE THIS TIE-UP.

8			0	0	0			
7				0	0			0
6	0				0	0		
5		0				0	0	
4	0		0				0	
3		0		0				0
2	0		0		0			
1		0		0		0		
	8	7	6	5	4	3	2	1

SECOND TIE-UP

8	0	0		0		0		0
7	0	0	0		0		0	
6		0	0	0		0		0
5	0		0	0	0		0	
4		0		0	0	0		0
3	0		0		0	0	0	
2		0		0		0	0	0
1	0		0		0		0	0
	8	7	6	5	4	3	2	1



TREADLING SEQUENCE:

- Treadle #1 - 20/2 Light Green Linen
- Treadle #2 - 20/2 Light Green Linen
- Treadle #3 - 20/2 Light Green Linen
- Treadle #4 - 20/2 Light Green Linen
- Treadle #5 - 20/2 Light Green Linen
- Treadle #6 - 20/2 Light Green Linen
- Treadle #7 - 20/2 Light Green Linen
- Treadle #8 - 20/2 Light Green Linen
- Treadle #7 - 20/2 Light Green Linen
- Treadle #6 - 20/2 Light Green Linen
- Treadle #5 - 20/2 Light Green Linen
- Treadle #6 - 20/2 Light Green Linen
- Treadle #7 - 20/2 Light Green Linen
- Treadle #8 - 20/2 Light Green Linen
- Treadle #7 - 20/2 Light Green Linen
- Treadle #6 - 20/2 Light Green Linen
- Treadle #5 - 20/2 Light Green Linen

DRAFTS AND DESIGNS

Published monthly (except July and August) by Robin & Russ Handweavers, 533 N. Adams St., McMinnville, Oregon.

SUBSCRIPTIONS: \$4.00 per year. Back issues or single copies, 50¢ each. Yearly subscriptions start with the September issue. If you subscribe after September, back issues from then on will be mailed to you, unless you specify that you want your subscription to start with the next September issue.

VOLUME 8, NUMBER 6, FEBRUARY, 1966

THREADING DRAFT

8			X									X	
7	X			X		X							X
6		X		X			X						X
5			X			X						X	
4					X			X				X	
3						X		X	X			X	
2						X	X			X	X		
1				X							X		

Treadle #4 - 20/2 Light Green Linen
 Treadle #3 - 20/2 Light Green Linen
 Treadle #2 - 20/2 Light Green Linen
 Treadle #1 - 20/2 Light Green Linen
 Treadle #2 - 20/2 Light Green Linen
 Treadle #3 - 20/2 Light Green Linen
 Treadle #4 - 20/2 Light Green Linen
 Treadle #3 - 20/2 Light Green Linen
 Treadle #2 - 20/2 Light Green Linen
 END OF ONE REPEAT - REPEAT OVER AND OVER AS DESIRED. On your last repeat, end with Treadle #1- 20/2 Light Green Linen to balance pattern, so that it ends as it begins.

MORE ABOUT THIS FABRIC: First of all, it is important that you use a firm, double beat, and even if you wish, a triple beat, so that the linen will pack in tightly on the ramie warp.

Surprisingly, we had a little more trouble than anticipated with the 20/2 Meadow Green Mercerized Ramie. It had a few more knots than normal, so at one time, there were 7 spools hanging from the back of the loom. There was a slight tendency for the warp to cling together. However, this can be solved by using the tie-up, where just 3 harnesses are raised on each treadle, instead of 5 harnesses being raised as we did. I will give both tie-ups, and will list them separately. Either way will work.

I might mention that Ramie always has a little more fuzz than does linen. This is one of the natural characteristics of this yarn.

However, with one washing of your ramie fabric, this fuzziness seems to disappear entirely.

Also, notice the nice sheen that this fabric has. This is because the Ramie has been mercerized, and is very similar to a Knox Mercerized Linen. The pattern that is on top is the ramie, and on the underside of the fabric, you see the light green linen as the dominant pattern thread.

Another thing that I wanted to mention is that this pattern would make excellent table linens or place-mats. You could also do something that would make it even

more attractive. If you have a 10 harness loom, I would suggest a border of about 20 threads of plain weave threaded on harnesses 9 and 10, and then the pattern threaded the width of the fabric, and then the plain weave on the other selvage edge. Thus, you could have a plain weave border all around the edge of the mat, and then have the center of the mat in pattern.

COST OF THE THREADS USED:

1. The 20/2 Meadow Green Mercerized Ramie is \$5.00 per lb. It has 3,000 yards per lb., and is available on 1 lb. cones or 4 oz. spools.
2. The 20/2 Light Green Linen has 3,000 yards per lb. also, and comes on a 1 lb. cone. This linen is priced at \$6.10 per lb.

COST OF THE FABRIC: We had a 7 yard warp, 40" wide, 30 ends per inch, and this took 2 lbs. 12 oz. of the 20/2 mercerized Meadow Green Ramie. Thus, the warp cost was \$13.75 for the 40" width material. This makes the warp cost come to \$1.97 per yard.

In the weft, we used 1 lb. 4 oz. of the 20/2 light green linen, for 6 yards of finished fabric. Thus the weft cost for 6 yards was \$7.63, or the total cost of weft per yard was \$1.27.

WARP COST PER YARD.....	\$ 1.97
WEFT COST PER YARD.....	1.27
FABRIC COST PER YARD.....	<u>\$ 3.24</u>



drafts and designs

a guide for 5 to 12 harness weaves

VOLUME 8, Number 7, MARCH 1966

TUSSAH TAN

An all silk sample woven on an 8 harness basket weave, and which could be used for many different uses.

WARP THREADS

There are two threads used in the warp, designated by X and O.

X - 8 Ply Tan Spun Silk

O - 3 Ply Tussah Silk

WEFT THREADS

Two threads were used in the weft also. One was a 3 ply natural spun silk with a gloss, and the other was the 8 ply tan spun silk.

TIE-UP DRAFT

8		0		0		0		0
7	0		0		0		0	
6	0	0		0				0
5	0	0	0					0
4		0	0			0		0
3	0			0	0		0	
2				0	0	0		0
1			0		0	0	0	
	1	2	3	4	5	6	7	8
							A	B

THREADING DRAFT

8	0	0	0	0	0	0	0	0	0	0	0	0	0	0	0	X
7		0	0	0	0	0	0	0	0	0	0	0	0	0	0	X
6								X		X						X
5								X	X	X						X
4								X		X						X
3										X		X				X
2										X	X	X				X
1										X		X				X
	One pattern repeat is 38 threads															Selv.



DRAFTS AND DESIGNS

Published monthly (except July and August) by Robin & Russ Handweavers, 533 N. Adams St., McMinnville, Oregon.

SUBSCRIPTIONS: \$4.00 per year. Back issues or single copies, 50¢ each. Yearly subscriptions start with the September issue. If you subscribe after September, back issues from then on will be mailed to you, unless you specify that you want your subscription to start with the next September issue.

VOLUME 8, NUMBER 7, MARCH 1966

TREADLING SEQUENCE:

- A. Using the 3 ply natural spun silk, treadle as follows:
1,3,1,2,4,2,1,3,1,8,6,8,7,5,7,8,6,8,
1,3,1,2,4,2,1,3,1.
- B. Using the 8 ply tan spun silk, treadle 8,7,8,7,8.
- C. Using the 3 ply natural spun silk, treadle as follows:
2,4,2,1,3,1,2,4,2,7,5,7,8,6,8,7,5,7,
2,4,2,1,3,1,2,4,2.
- D. Using the 8 ply tan spun silk, treadle 7,6,7,6,7.

END OF ONE PATTERN REPEAT. REPEAT OVER AND OVER AS DESIRED:

REED USED:

A 12 dent reed was used, but we had a special slewing of the reed with the Tan Spun silk, while the tussah silk was 2 per dent. This list below gives the slewing

3 3 2 3 3	2 2 2 2 2 2 2 2 2 2
Tan	3 ply tussah

In other words, the 14 threads of tan spun silk were sleyed: 3 per dent, 3 per dent, 2 per dent, 3 per dent, 3 per dent. The 24 threads of the three ply tussah were sleyed 2 per dent for 12 dents, and there were no skipped dents in the reed.

MORE ABOUT THIS FABRIC:

This was a difficult fabric to weave, because of the slubby 3 ply tussah silk. The slubs on the silk tend to wear off and tend to cling together. Thus, I had to beat very hard, using a firm, double beat to clear the shed so that I could throw the shuttle through the shed. I think that IF I WERE TO WEAVE THIS AGAIN, I WOULD EITHER USE A 10 DENT REED, OR I WOULD USE A SMOOTH THREAD IN THE WARP.

I do think that if I had put this two per dent in a 10 dent reed, that I would have had much less trouble in the weaving.

Also, this weave does not look at all like the sample I originally started to do, but when I started weaving it, I disliked the regular treadling intensely, so I experimented until I came up with this treadling, which is much more effective.

The original treadling was to be exactly as it was threaded, but this had nothing pleasing about it.

Also, on this sample, every once in a while, I had to stop and clean out the reed of the fuzz which stuck in the reed.

Another important thing that helped tremendously in the weaving was the fact that I used a warp dressing called WEAVOL, to help stop some of the fuzzing and the clinging together of the warp threads. If I had not had the weavol, I doubt if I would have been able to weave this.

COST OF THE THREADS USED:

The 3 ply tussah silk has about 4500 yards per lb., and is \$4.80 per lb. It is available on approximately 4 oz. spools.

The 8 ply spun silk in the tan color has about 3300 yards per lb. & is \$4.00 per lb. It is also available in a beige color as well as the tan, and comes on 4 oz. spools.

The natural 3 ply spun silk, which was the main weft thread is sometimes called a 3 cord silk. It has 1400 yards per lb., and is \$4.80 per lb. It also is available on 4 oz. spools.

COST OF THE FABRIC:

Our warp was 46" wide on the loom. We had a 12 yard warp, and it took 2 lbs. 2 oz. of the 3 ply tussah silk, and 1 lb. 11 oz. of the 8 ply tan spun silk. Thus the total warp cost for 12 yards was \$17.20 or it came to \$1.44 per yard.

Weft cost was much greater. In the weft, we used 2 lbs. 1 oz. of the 3 cord natural silk in 3 yards, and we used two ounces of the 8 ply tan spun silk in 3 yards. Thus the weft cost per yard came to \$3.47.

WARP COST PER YARD.....	\$ 1.44
WEFT COST PER YARD.....	<u>3.47</u>
FABRIC COST PER YARD, 45"	
	WIDE \$ 4.91

LINEN SPECIAL
 1½ lea linen in a half bleached white, on approximately 2 lb. tubes. 450 yards per lb. \$1.60 per pound, plus postage, while it lasts.



drafts and designs

a guide for 5 to 12 harness weaves

VOLUME 8, NUMBER 8, APRIL, 1966

DOUBLE HUCK LACE

This is an 8 harness huck weave which gives you huck lace diamonds, with a plain weave background.

PROFILE DRAFT OF THREADING DRAFT

8							X		
7						X	X		
6	X				X			X	
5		X			X				X
4			X	X					X
3				X					X
2									
1									

In a double huck profile draft like this one, each X represents 5 threads, and you have to understand it thoroughly. Let me explain it further.

- X on #3 equals..... 2,3,2,3,2 (5 thds)
- X on #4 equals..... 1,4,1,4,1 (5 thds)
- X on #5 equals..... 2,5,2,5,2 (5 thds)
- X on #6 equals..... 1,6,1,6,1 (5 thds)
- X on #7 equals..... 2,7,2,7,2 (5 thds)
- X on #8 equals..... 1,8,1,8,1 (5 thds)

TIE-UP DRAFT

8		0		0			0		0		0
7			0		0	0		0		0	
6	0			0			0				0
5		0			0	0			0		0
4	0		0					0			0
3		0		0			0		0		0
2	0		0		0			0		0	
1		0		0		0		0		0	
	1	2	3	4	5	6	7	8	9	A	B



WARP

The warp is 40/2 Mercerized Ramie in an Eggshell Natural color.

WEFT

The weft is 40/2 natural grey linen which is unmercerized.

REED USED

A 12 dent reed was used, and it was triple sleyed, 3 ends per dent, or 36 threads per inch.



drafts and designs

a guide for 5 to 12 harness weaves

VOLUME 8, NUMBER 9, MAY, 1966

PATCHWORK BLUE

An interesting 6 harness weave which should make good upholstery, and have a multitude of other uses.

THREADING DRAFT

6							X
5	X						X
4		X			X		
3			X				
2		X		X			X
1	X		X			X	

TIE-UP DRAFT

6	0	0					0	
5						0	0	
4			0	0		0	0	
3			0		0	0	0	
2	0			0	0			0
1		0				0		0
	1	2	3	4	5	6	7	8
							A	B

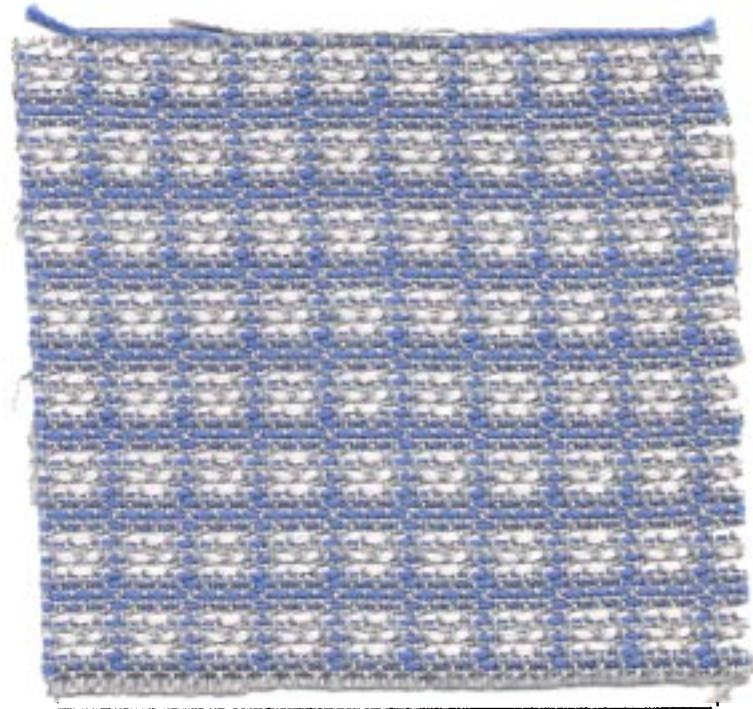
A & B or 7 & 8 are tabby treadles.

WARP

The warp was 20/2 Grey, Mercerized Cotton.

WEFT

There were three threads used in the weft. One was a white 6 strand floss which was used for the pattern. Another was a 10/3 mercerized light blue cotton, and the third was a 10/2 grey, mercerized cotton.



REED USED

A 15 dent reed was used, and it was double sleyed, 2 ends per dent or 30 threads per inch.

TREADLING SEQUENCE

Treadle #7 - 10/2 grey mercerized cotton
 Treadle #1 - 10/3 blue merc. cotton
 Treadle #8 - 10/2 grey merc. cotton
 Treadle #2 - 10/3 blue merc. cotton
 Treadle #3 - 6 strand white floss
 Treadle #7 - 10/2 grey merc. cotton
 Treadle #1 - 10/3 blue merc. cotton
 Treadle #4 - 6 strand white floss
 Treadle #5 - 10/2 grey merc. cotton
 Treadle #8 - 10/2 grey merc. cotton

DRAFTS AND DESIGNS

Published monthly (except July and August)
by Robin & Russ Handweavers, 533 North Adams
St., McMinnville, Oregon - 97128

SUBSCRIPTIONS: \$4.00 per year. Back issues
or single copies, 50¢ each. Yearly subscrip-
tions start with the September issue. If you
subscribe after September, back issues from
then on will be mailed to you, unless you
specify that you want your subscription to
start with the next September issue.

VOLUME 8, NUMBER 9, MAY, 1966

"Treadling" - continued

Treadle #2 - 10/3 blue merc. cotton
Treadle #3 - 6 strand white floss
Treadle #7 - 10/2 grey merc. cotton
Treadle #1 - 10/3 blue merc. cotton
Treadle #8 - 10/2 grey merc. cotton
Treadle #6 - 10/3 blue merc. cotton

END OF ONE PATTERN REPEAT. Repeat over and
over as desired.

MORE ABOUT THE FABRIC

Use a firm, even, double beat in the weav-
ing of this fabric. The firmer the beat is,
the nicer the fabric seems to be.

Also, the tie-up that is given here will
produce the wrong side up on this fabric.
It will actually be the under side of this
fabric (look at back of the sample swatch)
that appears on the top of the fabric. We
deliberately did it this way though, as it
entails less lifting of harnesses, and thus
makes for easier weaving.

Also, doesn't that look like a crazy,
mixed up treadling. And yet, after you do
one or two repeats of the pattern, and begin
to memorize the treadling, then it seems
much easier than you anticipate.

Also, if you want a much firmer fabric
for upholstery, use a 3 ply sport yarn for
weft instead of the light blue 10/3 and the
white 6 strand floss. In place of the 10/2
grey cotton, use a 2/18's fabri.

We did one sample with this wool yarn
using a light brown 3 ply sport yarn in
place of the 10/3 light blue in the weft.

We used a light blue 3 ply sport yarn in
place of the white 6 strand floss, and in-
stead of the 10/2 grey in the weft, we used
a 3 ply sport yarn in maroon. It makes an
exceptionally firm fabric for upholstery.

I really was a little disappointed
that the cottons we have used here for
weft were not as firm as was the wool
samples, but even so, it does show the
technique and idea.

COST OF THREADS USED

In the warp, we used a 20/2 cotton in
light grey. It comes on 1 lb. cones and
is \$3.50 per lb.

In the weft, we used a white, 6 strand
floss. It is \$3.85 per lb. on 1 lb.
cones. Also, the 10/3 light blue cotton
comes on 1 lb. cones and is \$3.50 per lb.
The 10/2 light grey used in the weft was
also on 1 lb. cones at \$3.50 per lb.
All of the warp and weft threads were
mercerized threads.

COST OF THE FABRIC

We had an 8 yard warp, 40" wide, and
it took 1 lb. 3 oz. of the 20/2 light
grey, mercerized cotton. At \$3.50 per
lb., our warp cost was \$4.16 for 8 yards
of warp, or a cost of 52¢ per yard.

In the weft, for 7 yards of finished
fabric, we used 1 lb. of the 10/2 grey
cotton; 1 lb. 5 oz. of the 10/3 light
blue cotton, and 12½ oz. of the white,
6 strand floss. Thus our total weft
cost for the 3 threads was \$10.90. Break-
ing it down to weft cost per yard, we
find the weft comes to \$1.56 per yard.

WARP COST PER YARD, 40" WIDE....	\$.52
WEFT COST PER YARD.....	1.56
FABRIC COST PER YARD, 38" WIDTH	\$ 2.08

LINEN SPECIAL: Heavy, 1½ lea linen on
2 lb. tubes. Special at \$1.60 per lb.
450 yards per lb. Postage is extra.

LINEN SPECIAL: Fine 40/2 linen, with
6,000 yards per lb. Available in
skeins of about 12 to 16 oz. per skein
in bleached white at the LOW, LOW, PRICE
of \$2.40 per lb. Postage is extra.

LINEN SPECIAL: Heavy, 2 lea linen in
dark natural grey, imported from Scot-
land. On approximately 2 lb. tubes.
\$1.60 per lb. while it lasts.

ALL FROM ROBIN & RUSS HANDWEAVERS, 533
North Adams Street, McMinnville, Oregon
97128



drafts and designs

a guide for 5 to 12 harness weaves

Volume 8, Number 10, June, 1966

SWEDISH HONEYCOMB

This effective honeycomb pattern is one that is commonly used by the Scandinavian countries. This is a 10 harness variation that we have used this month.

WARP

The warp is 50/3 cotton, FINE-WEAVE, in a color called Cocktail Green.

WEFT

Two threads are used in the weft. One is the FINE-WEAVE cotton in a color called Temple Gold. This is used for the dividing ribs in the honeycomb. The other thread used for the cells of the honeycomb is a 20/2 mercerized cotton, color Reseda Green.

REED USED

A 15 dent reed was used, and it was triple sleyed, 3 ends per dent, or 45 threads per inch.

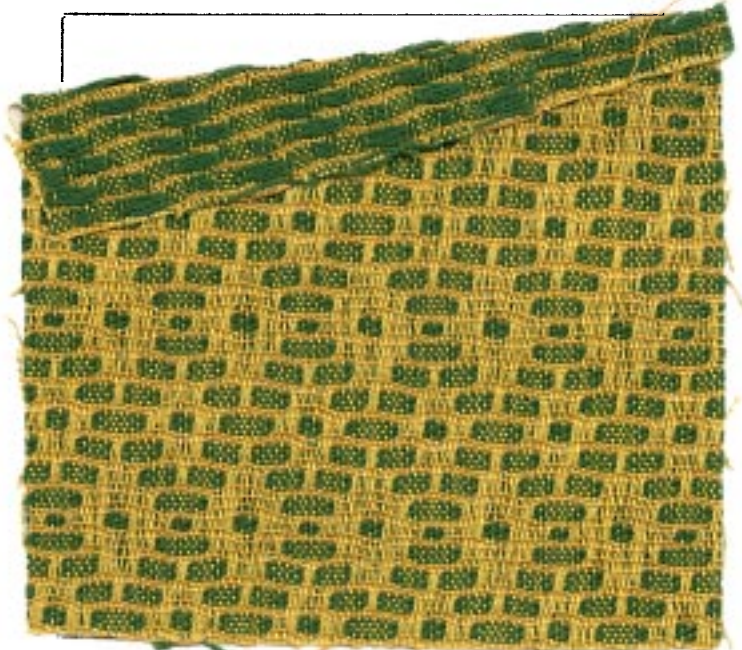
TIE-UP DRAFT

10	0								0	0	
9		0								0	0
8						0	0			0	
7								0		0	0
6					0	0				0	
5						0	0				0
4			0	0						0	
3				0	0						0
2	0		0							0	
1		0		0							0

1 2 3 4 5 6 7 8 9 10 11 12
A B

TREADLING SEQUENCE

Treadle A - fineweave, temple gold cotton
Treadle B - fineweave, temple gold
Treadle 1 - 20/2 Reseda green cotton



Treadle 2 - 20/2 Reseda green cotton
Treadle 1 - 20/2 Reseda green cotton
Treadle 2 - 20/2 Reseda green cotton
Treadle A - fineweave, temple gold
Treadle B - fineweave, temple gold
Treadle 3 - 20/2 Reseda green cotton
Treadle 4 - 20/2 Reseda green cotton
Treadle 3 - 20/2 Reseda green cotton
Treadle 4 - 20/2 Reseda green cotton
Treadle A - fineweave, temple gold
Treadle B - fineweave, temple gold
Treadle 5 - 20/2 Reseda green cotton
Treadle 6 - 20/2 Reseda green cotton
Treadle 5 - 20/2 Reseda green cotton
Treadle 6 - 20/2 Reseda green cotton
Treadle A - fineweave, temple gold
Treadle B - fineweave, temple gold
Treadle 7 - 20/2 Reseda green cotton

DRAFTS AND DESIGNS

Published monthly (except July and August) by Robin & Russ Handweavers, 533 N. Adams St., McMinnville, Oregon.

SUBSCRIPTIONS: \$4.00 per year. Back issues or single copies, 50¢ each. Yearly subscriptions start with the September issue. If you subscribe after September, back issues from then on will be mailed to you, unless you specify that you want your subscription to start with the next September issue.

VOLUME 8, Number 10 - June, 1966

THREADING DRAFT

10					X	X
9					X	X
8	X	X			X	X
7	X	X			X	X
6		X	X		X	X
5		X	X		X	X
4			X	X	X	X
3			X	X	X	X
2				X	X	
1			X	X		

Treadle 8 - 20/2 Reseda green cotton
 Treadle 7 - 20/2 Reseda green cotton
 Treadle 8 - 20/2 Reseda green cotton
 Treadle A - fineweave, temple gold
 Treadle B - fineweave, temple gold
 Treadle 9 - 20/2 Reseda green cotton
 Treadle 10 - 20/2 Reseda green cotton
 Treadle 9 - 20/2 Reseda green cotton
 Treadle 10 - 20/2 Reseda green cotton
 Treadle A - fineweave, temple gold
 Treadle B - fineweave, temple gold
 Treadle 7 - 20/2 Reseda green cotton
 Treadle 8 - 20/2 Reseda green cotton
 Treadle 7 - 20/2 Reseda green cotton
 Treadle 8 - 20/2 Reseda green cotton
 Treadle A - fineweave, temple gold
 Treadle B - fineweave, temple gold
 Treadle 5 - 20/2 Reseda green cotton
 Treadle 6 - 20/2 Reseda green cotton
 Treadle 5 - 20/2 Reseda green cotton
 Treadle 6 - 20/2 Reseda green cotton
 Treadle A - fineweave, temple gold
 Treadle B - fineweave, temple gold
 Treadle 3 - 20/2 Reseda green cotton
 Treadle 4 - 20/2 Reseda green cotton
 Treadle 3 - 20/2 Reseda green cotton
 Treadle 4 - 20/2 Reseda green cotton

END OF ONE PATTERN REPEAT. Repeat over and over as desired.

MORE ABOUT THE FABRIC

This is an easy to weave fabric. One suggestion that I'd like to make is that you beat it tighter than we did on our sample.

I would suggest that you beat, change to the next shed, and beat again, and use a firm beat.

The fine weave cotton is an excellent warp. In 8 yards, 40" wide, we did not have even one broken thread. It is very strong, and seems to be quite elastic. This property of elasticity, I'm sure, is because this is a 3 ply thread. Most of the 3 ply threads because of the twist, seem to have more elasticity than other threads.

We have given here in our sample the tie-up, so that the wrong side of the fab-

ric weaves up on the top of the loom. If you were to tie-up your treadles just the opposite of what we have, you will be lifting 8 harnesses instead of just two, and this of course is just much more work for the weaver.

COST OF THE THREADS USED

The fine-weave cotton comes on 6,000 yard cones (approximately 1/2 lb.), and it sells for \$1.95 per cone for the colors. There are 36 colors available in this fine weave, and it is an excellent quality thread.

The 20/2 mercerized Reseda green cotton has 8400 yards per lb., comes on 1 lb. cones, and is \$3.50 per lb.

COST OF THE FABRIC

In our 8 yard warp, 40" wide and with 45 threads per inch, we used 2-1/3 spools of the fine-weave cotton at \$1.95 per spool. Our warp cost was \$4.55 or in cost per yards, it came to 57¢ per yard.

In the weft, we used 1 lb. of the 20/2 Reseda green cotton, and slightly less than one spool of the fine-weave cotton. Thus our weft cost comes to \$5.45 for some approximate seven yards of finished fabric. Thus, our weft cost comes to 78¢ per yard.

WARP COST PER YARD..... \$.57
 WEFT COST PER YARD..... .78
 FABRIC COST PER YARD..... \$1.35