



# drafts and designs

*a guide for 5 to 12 harness weaves*

VOLUME 9, NUMBER 1 - SEPTEMBER, 1966

ROUGH AND FAIRWAYS

This textured, 8 harness weave would make excellent dress material, and if used in other yarns, would be good for upholstery, sport coats, overcoats, etc.

WARP

Our warp thread is a 10/2 cotton in a medium blue.

WEFT

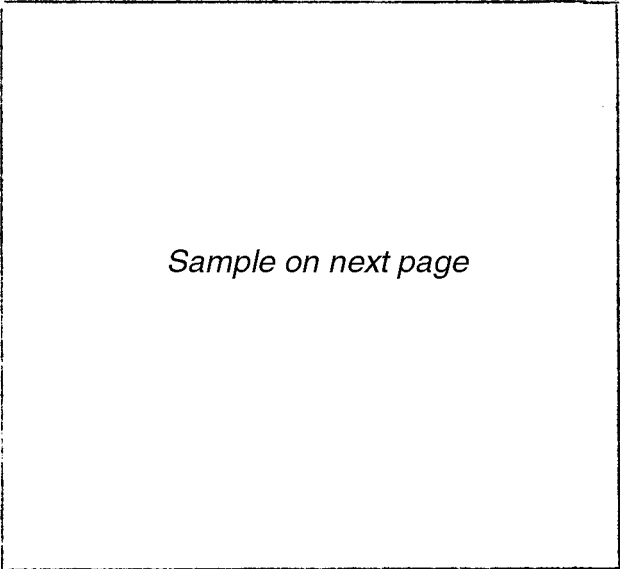
The weft thread is a 7/2 douppioni silk in an Avacado color.

REED USED

A 15 dent reed was used, and it was double sleyed, 2 ends per dent, or 30 threads per inch.

THREADING DRAFT

8					X				X				X
7				X	X			X	X			X	X
6			X		X	X			X	X		X	X
5				X			X			X			X
4	X			X		X			X				X
3	X		X	X		X	X		X				X
2		X	X		X	X		X	X				
1		X			X			X					



MORE ABOUT THIS SAMPLE

This is quite an easy piece to weave and my only suggestion is that you use a medium double beat, changing the shed and beating again before you throw the shuttle.

After doing this, I thought over and over that it would be a nicer piece for dress

yardage, if we had used a 20/2 Egyptian cotton at 32 or 36 threads per inch for the warp, and the same silk for the weft. The diamonds would have been a little smaller, but I think it would be much more effective in dress material with the finer weight warp threads.



DRAFTS AND DESIGNS

Published monthly (except July and August) by Robin & Russ Handweavers, 533 North Adams St., McMinnville, Oregon - 97128

SUBSCRIPTIONS: \$4.00 per year. Back issues or single copies, 50¢ each. Yearly subscriptions start with the September issue. If you subscribe after September, back issues from then on will be mailed to you, unless you specify that you want your subscription to start with the next September issue.

VOLUME 9, NUMBER 1 - SEPTEMBER, 1966

Also, I can see many different possibilities with this pattern for such material as upholstery and as drapery. I think that a 10/2 cotton for warp as we used it here, and a 10/3 cotton for weft, would make a good firm upholstery material that could be used for couches, davenport, pillows, etc.

Also, this is another way of bringing out both ~~the~~ colors of your warp and your weft if you use such a set-up as this. You notice that the warp color dominates in one rib, and the weft thread dominates in the other rib. This could be particularly effective in drapery if you want to use two colors to blend with the rest of the items in your room. Our first sample on this was using a grey 10/2 cotton warp, and a red 10/2 cotton for weft. The little diamonds do stand out much better if you use a smooth thread.

COST OF THE THREADS USED

The warp thread is a medium blue 10/2 cotton, with 4200 yards per lb. It comes on 1 lb. cones, and is \$3.50 per lb.

The weft thread is the 7/2 douppioni silk. We just had 4 different shades of greens come back from the dyers, and this avacado color is one that is just in. To me, the blue and green are very effective together. The 7/2 douppioni silk has 5800 yards per lb., and is \$7.00 per lb., or \$2.00 per 4 oz. spool, in lots of less than 1 lb. of a color. It comes on approximately 1 lb. cones.

TIE-UP DRAFT

8		0	0	0
7	0		0	0
6	0	0		0
5	0	0	0	
4				0
3			0	
2		0		
1	0			
	1	2	3	4

COST OF THE FABRIC

We had a 7-1/2 yard warp, 40" wide on the loom. This took 2 lbs. 6 oz. of the 10/2 medium blue cotton, so our warp cost was \$8.32 for the 7-1/2 yard warp or it cost \$1.11 per yard.

In the weft, in 6 1/2 yards of finished fabric, we used 1 lb. 4 oz. of the 7/2 spun douppioni silk in Avacado green. Thus the total weft cost was \$8.75 or the cost per yard came to \$1.35 per yard.

WARP COST PER YARD.....\$ 1.11  
WEFT COST PER YARD..... 1.35  
FABRIC COST PER YARD, 38" wide...\$ 2.46

This is quite a reasonable cost for nice yardage material like our sample, and much less than many of the samples we have featured.

TREADLING SEQUENCE

1. Treadle #1 - - 1 time
2. Treadle #2 - - 1 time
3. Treadle #3 - - 1 time
4. Treadle #4 - - 1 time
5. Treadle #3 - - 1 time
6. Treadle #2 - - 1 time

End of one pattern repeat. Repeat over and over as desired.

LINEN SPECIAL: Heavy, 1 1/2 lea linen on 2 lb. tubes. Special at \$1.60 per lb. 450 yards per lb. Postage is extra.

LINEN SPECIAL: Fine 40/2 linen, with 6,000 yards per lb. Available in skeins of about 12 to 16 oz. per skein in bleached white at the LOW, LOW, PRICE of \$2.40 per lb. Postage is extra.

LINEN SPECIAL: Heavy, 2 lea linen in dark natural grey, imported from Scotland. On approximately 2 lb. tubes. \$1.60 per lb. while it lasts.

ALL FROM ROBIN & RUSS HANDWEAVERS,  
533 North Adams Street,  
McMinnville, Oregon - 97128



DRAFTS AND DESIGNS

Published monthly (except July and August) by Robin & Russ Handweavers, 533 N. Adams St., McMinnville, Oregon.

SUBSCRIPTIONS: \$4.00 per year. Back issues or single copies, 50¢ each. Yearly subscriptions start with the September issue. If you subscribe after September, back issues from then on will be mailed to you, unless you specify that you want your subscription to start with the next September issue.

VOLUME 9, No. 2 - OCTOBER, 1966

TREADLING SEQUENCE:

- X - in a dark green roving
- A - in 20/2 Canton Green
- Y - in a dark green roving
- B - in 20/2 Canton Green

NOTE: Repeat these 4 treadles over and over for your border treadling, if you use the 1,7,2,7 block on each side of the pattern repeat for a plain weave border.

In the rest of this treadling, we have used 2 treadles for the pattern shot, and just one treadle for the tabby shot.

TREADLE:

1. X & 1 - Green silk roving
  2. A - 20/2 Canton Green Cotton
  3. Y & 1 - Green silk roving
  4. B - 20/2 Canton Green Cotton
- Repeat these 4 treadles 2 times, and this makes the small square in the pattern.
5. X & 4 - Green silk roving
  6. A - 20/2 Green Canton cotton
  7. Y & 4 - Green silk roving
  8. B - 20/2 Canton Green cotton
  9. X & 3 - Green silk roving
  10. A - 20/2 Canton Green cotton
  11. Y & 3 - Green silk roving
  12. B - 20/2 Canton Green cotton
  13. X & 2 - Green silk roving
  14. A - 20/2 Canton Green cotton
  15. Y & 2 - Green silk roving
  16. B - 20/2 Canton Green cotton
  17. X & 2 - Green silk roving
  18. A - 20/2 Canton Green cotton
  19. Y & 2 - Green silk roving
  20. B - 20/2 Canton Green cotton
  21. X & 3 - Green silk roving
  22. A - 20/2 Canton Green cotton
  23. Y & 3 - Green silk roving
  24. B - 20/2 Canton Green cotton
  25. X & 4 - Green silk roving
  26. A - 20/2 Canton Green cotton
  27. Y & 4 - Green silk roving
  28. B - 20/2 Canton Green cotton

One complete pattern repeat is a total of 28 threads. Repeat over and over as desired.

MORE ABOUT THIS FABRIC:

Please notice the front and back of this fabric and the fact that you have a light background with dark pattern on one side, and a dark background with a light pattern on the other side. This is a typical summer and winter weave, and it is believed that in early colonial times the light side was used one part of the year, and the dark side was used the other part of the year.

Actually, this treadling given can be revised if you have enough treadles, so that you would have to use just one treadle instead of 2 as we have given in the treadling sequence. Thus, you would need 12 treadles to have this tie-up. You would have these treadles tied up as are listed just below.

- Harnesses 6 & 1 are tied to one treadle
- Harnesses 6 & 2 are tied to one treadle
- Harnesses 5 & 1 are tied to one treadle
- Harnesses 5 & 2 are tied to one treadle
- Harnesses 4 & 1 are tied to one treadle
- Harnesses 4 & 2 are tied to one treadle
- Harnesses 3 & 1 are tied to one treadle
- Harnesses 3 & 2 are tied to one treadle
- Harness 1 is the X treadle
- Harness 2 is the Y treadle
- Harnesses 7,6,5,4,3 are tied to one treadle for the A tabby.
- Harnesses 2 & 1 are tied to one treadle for the B tabby.

COST OF THE THREADS USED:

The 20/2 Egyptian cotton comes in 95 to 100 colors, and it is priced at \$5.50 per lb. It comes on 1/2 lb. spools.

The dark green silk roving is a 2.4/1 silk roving with about 2,000 yards per lb. It is \$4.80 per lb.

COST OF THE FABRIC:

Our sample was set up 7 yards long, 39 1/2" wide on the loom, and it took one lb. of the Avocado Egyptian Cotton for the warp. Thus a 7 yard warp cost \$5.50 or 79¢ per yard.

In the weft, we used 10 1/2 oz. of the 20/2 Canton Green Egyptian Cotton in 6 yards of fabric, and we used 2 lbs. 3 oz. of the green silk roving. Thus, the cotton for weft was \$3.61 and the silk for weft was \$10.50. The total weft cost for 6 yards was \$14.11, or the cost per yard is \$2.35.

WARP COST PER YARD.....	\$ .79
WEFT COST PER YARD.....	2.35
FABRIC COST PER YARD.....	<u>\$3.14</u>





# drafts and designs

*a guide for 5 to 12 harness weaves*

VOLUME 9, No. 3 - NOVEMBER, 1966

MID-VICTORIAN

The sample is a luxurious 10 harness pattern that is reminiscent of the Mid-Victorian era, but which is also beautiful with some of the contemporary fashions of today.

TIE-UP DRAFT:

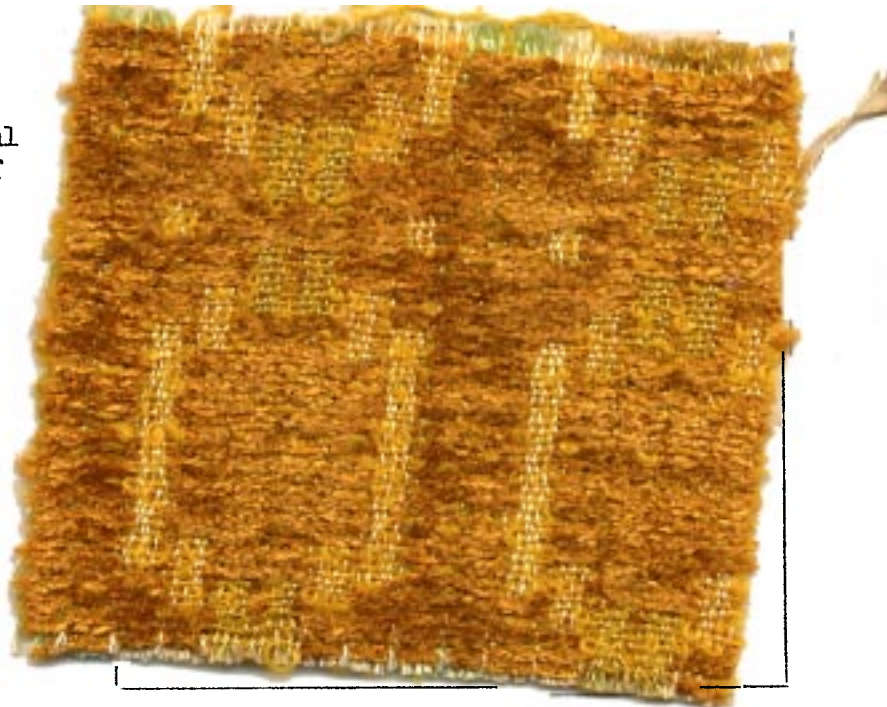
10								0
9							0	
8	0	0						0
7	0	0					0	
6		0	0					0
5		0	0				0	
4			0	0				0
3			0	0			0	
2						0		0
1					0		0	
	1	2	3	4	X	Y	A	B

KEY TO COLORS IN THE WARP:

- P....20/2 Egyptian Cotton, Popcorn color
- T....20/2 Egyptian Cotton, Tan color
- G....20/2 Egyptian Cotton, Gold color
- N....20/2 Egyptian Cotton, Nile Green color

THREADING DRAFT:

10									N	N	N	N	N	N
9									N	N	N	N	N	N
8		P	P	P					P	P	P			
7		P	P	P					P	P	P			
6				T	T	T			T	T	T			
5				T	T	T			T	T	T			
4					G	G	G	G	G	G	G			
3					G	G	G	G	G	G	G			
2	P		T		G		G		T		P		N	N
1	P		T		G		G		T		P		N	N



REED USED:

A 15 dent reed was used, and it was double sleyed, 2 ends per dent, or 30 threads per inch.

## DRAFTS AND DESIGNS

Published monthly (except July and August) by Robin & Russ Handweavers, 533 N. Adams St., McMinnville, Oregon.

SUBSCRIPTIONS: \$4.00 per year. Back issues or single copies, 50¢ each. Yearly subscriptions start with the September issue. If you subscribe after September, back issues from then on will be mailed to you, unless you specify that you want your subscription to start with the next September issue.

VOLUME 9, NUMBER 3                      NOVEMBER, 1966

### WARP USED:

Four colors of 20/2 Egyptian cotton, colors as indicated in the threading draft were used in the warp thread.

### WEFT THREADS:

A 12 cut rayon chenille, in an Antique Gold color was used as the pattern thread. The tabby thread was a bright yellow gold loop mohair thread.

### TREADLING SEQUENCE:

1. Treadle A, Yellow Gold Mohair
  2. Treadle 4 and X, 12 cut Chenille
  3. Treadle B, Yellow Gold Mohair
  4. Treadle 4 & Y, 12 cut Chenille
- REPEAT THESE 4, two times, or 8 shots in all.
5. Treadle A, Yellow Gold Mohair
  6. Treadle 3 and X, 12 cut Chenille
  7. Treadle B, Yellow Gold Mohair
  8. Treadle 3 and Y, 12 cut Chenille
- REPEAT THESE 4 THREADS, 2 times or 8 shots in all.
9. Treadle A, Yellow Gold Mohair
  10. Treadle 2 and X, 12 cut Chenille
  11. Treadle B, Yellow Gold Mohair
  12. Treadle 2 & Y, 12 Cut Chenille
- REPEAT THESE 4, two times or 8 shots
13. Treadle A, Yellow Gold Mohair
  14. Treadle 1 and X, 12 cut Chenille
  15. Treadle B, Yellow Gold Mohair
  16. Treadle 1 and Y, 12 cut Chenille
- REPEAT NUMBERS 13 through 16 a total of 8 times, or 32 shots in all
17. Treadle A, Yellow Gold Mohair
  18. Treadle 2 and X, 12 cut Chenille
  19. Treadle B, Yellow Gold Mohair
  20. Treadle 2 and Y, 12 cut Chenille
- REPEAT THESE 4 threads 2 times or 8 shots
21. Treadle A, Yellow Gold Mohair
  22. Treadle 3 and X, 12 cut Chenille
  23. Treadle B, Yellow Gold Mohair
  24. Treadle 3 and Y, 12 cut Chenille
- REPEAT THESE 4, 2 times or 8 shots.
25. Treadle A, Yellow Gold Mohair
  26. Treadle 4 and X, 12 cut Chenille
  27. Treadle B, Yellow Gold Mohair
  28. Treadle 4 and Y, 12 cut Chenille

- REPEAT THESE 4 two times or 8 shots
29. Treadle A, Yellow Gold Mohair
  30. Treadle 1 and X, 12 cut Chenille
  31. Treadle B, Yellow Gold Mohair
  32. Treadle 1 and Y, 12 cut Chenille
- REPEAT THESE 4, 2 times or 8 shots

START AT THE BEGINNING AND REPEAT OVER AND OVER.

### MORE ABOUT THE FABRIC

This piece is so beautiful in the large 40" width, that this was one of the few that I hated to cut into swatches. It has many, many possibilities as chair upholstery, as drapes, for use on pillows, and I can see 1,001 other uses.

Also, be sure to look at both sides of the sample swatch. On one side, you see no green and on the other side you see a green stripe of Nile green. I couldn't decide which I liked the best, but feel this is one of our prettiest samples in a long, long time.

### COST OF THE THREADS USED

The Egyptian cotton warp thread in size 20/2 comes in about 100 colors. It is \$5.50 per lb., and has 8,400 yards per lb.

The 12 cut rayon chenille is available from time to time in different colors. We have probably 15 colors at present, and it is \$3.50 per lb., and comes on 1/2 spools.

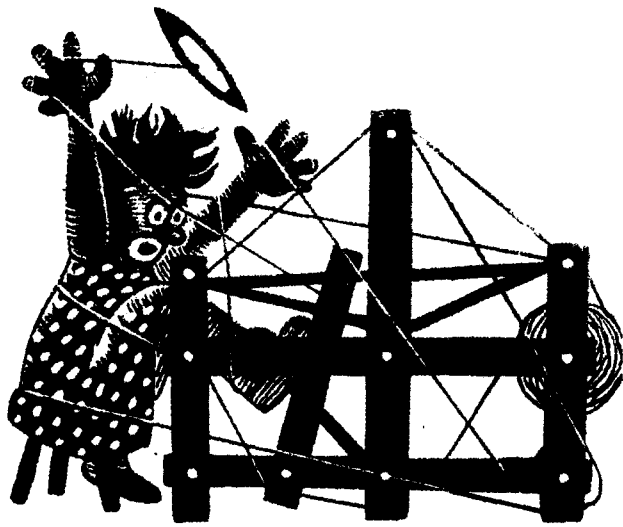
The loop mohair in the bright yellow gold is on sale at \$3.50 per lb., and it comes on approximately 2 lb. cones. We will be glad to wind off a 1 lb. tube of it for you if you wish.

### COST OF THE FABRIC:

We had a 41" wide warp, 1232 threads in all and a 7-1/2 yard warp. As there are 64 threads in one repeat, we warped 19 sections with 64 threads each, and then added an additional 16 green threads in the 20th section to make a left side border the same as the right side. It took 5 oz. of each of the 4 colors, or 1 lb. 4 oz. of the warp in all. Thus the warp cost for 7 1/2 yards was \$6.88 or the cost per yard for 41" width material was 92¢ per yard.

We received 6 yards of finished fabric. In the weft, it took 2 lbs. 15 oz. of the antique gold chenille, and 2 lbs. of the bright yellow gold loop mohair. Thus, the total weft cost was \$17.50, or it cost \$2.91 per yard.

Warp cost per yard, - 41" wide..\$ .90  
Weft cost per yard, 40" wide.... 2.91  
FABRIC COST PER YARD WAS.....\$3.81



# drafts and designs

*a guide for 5 to 12 harness weaves*

Volume 9, Number 4, December 1966

**MINT AND SILVER:**

An interesting 8 harness weave in all cotton that could be used for dress material. Made in other yarns, it would be excellent for tablecloths, mats, drapes, etc.

**TIE-UP DRAFT**

8			X		X		X		
7				X		X		X	
6	X		X		X		X		X
5		X		X		X		X	
4	X		X				X	X	
3		X		X		X	X		
2	X		X		X	X			
1		X		X	X				
	1	2	3	4	5	6	7	8	

**WARP USED:**

The warp thread was a 20/2 Egyptian cotton in a color called "Mint".

**THREADING DRAFT:**

	D				C				B				A	
8														
7									X	X				
6	X	X						X	X				X	X
5		X	X					X		X			X	X
4			X		X		X			X		X		X
3				X		X	X	X			X	X	X	X
2				X	X		X	X			X	X	X	X
1				X		X				X		X		
	To balance				Pattern Repeat				Selv.					

**WEFT USED:**

The weft thread used was a 20/2 Egyptian cotton, which has been mercerized and gassed, and is pale pink in color.

**REED USED:**

You can use a 20 dent reed, and double sley it, 2 ends per dent, or you can use a 10 dent reed, and sley it 4 ends to the dent, to make it 40 threads per inch.





## DRAFTS AND DESIGNS

Published monthly (except July and August)  
by Robin & Russ Handweavers, 533 North Adams  
St., McMinnville, Oregon.

**SUBSCRIPTIONS:** \$4.00 per year.  
Back issues or single copies, 50¢ each.  
Yearly subscriptions start with the September  
issue. If you subscribe after September,  
back issues from then on will be mailed to  
you, unless you specify that you want your  
subscription to start with the next September  
issue.

VOLUME 9, NUMBER 4, DECEMBER, 1966

### NOTE ABOUT THREADING DRAFT:

1. A to B is the right selvage.
2. B to C is the main pattern repeat, and  
you repeat over and over for the desired  
width.
3. C to D is to help balance the last re-  
peat of your pattern, and also includes  
the four threads for the left selvage.

### TREADLING SEQUENCE:

Instead of listing each treadle separate-  
ly, I will divide the treadling into two  
parts. I'm dividing it this way, as I feel  
it would be much easier to remember the  
treadling if you divide it into two parts.

The first thirteen weft threads are as  
follows: Treadle 5,6,7,8,7,6,5,6,7,8,7,6,5.  
The second group of seven threads is as  
follows: Treadle 4,3,2,1,2,3,4. This is the  
end of one pattern repeat. Repeat over and  
over as desired.

### COST OF THE THREADS USED:

The 20/2 Egyptian cotton comes in about  
100 colors. It is mercerized and gassed to  
make it smoother and stronger, and to give  
it more sheen. The price is \$5.50 per pound,  
and it comes on 1/2 lb. spools, with 4200  
yards per 1/2 lb. spool. This thread was  
used in both the warp and the weft.

### COST OF THE FABRIC:

We had a warp, 40" wide, with 40 threads  
per inch or 1600 warp ends. This took 1 lb.  
14 oz. of the 20/2 Egyptian cotton in the  
mint green color. Thus the total warp cost  
was \$10.32, and the cost per yard for the  
40" width material was \$1.48 per yard.

In the weft, we used exactly one lb. of  
the light pink Egyptian cotton for weft, and  
we had 6 yards of fabric from our 7 yard  
warp. Thus the total weft cost was \$5.50, or  
the cost per yard was 92¢ per yard.

WARP COST PER YARD.....\$1.48  
WEFT COST PER YARD......92  
FABRIC COST PER YARD.....\$2.40

### MORE ABOUT THE FABRIC:

The close setting of 40 threads per inch  
is done for two reasons. The first rea-  
son is to try and square the pattern a  
little more, and the 2nd reason was to  
make the fabric a little more durable  
for dress yardage or for similar uses.

On this fabric, you will find it a  
help if you use a firm, double beat, and  
beat not too hard, but firm. A hard  
double beat will quite often break the  
weft threads on the selvage edges when  
you use the same size threads for both  
warp and weft, but the firm beat will  
not do this.

Our sample was washed in the short  
cycle of the washing machine and then  
it was allowed to drip dry, and then we  
steam pressed it.

Actually, this is a very easy piece  
to weave, and as it is a single shuttle  
weave is faster than many fabrics might be

It wove down to about 38" wide in the  
fabric from the 40" width in the reed.  
When washed, there was a shrinkage of  
about 3 or 4% on the original washing.  
After your first washing, and this takes  
place before you make it up, you should  
have very little if any shrinkage on this  
type material.

As this is more or less an extended  
point twill variation with a little dif-  
ferent tie-up than usual to give you the  
lace variations in the weave, you will  
find that there are other treadling se-  
quences that you could work out on this  
set-up, that would probably be pleasing  
to you also. Why not put on an extra 1  
yard of warp, and try some of these dif-  
ferent variations, and see what you can  
come up with.

Also, notice in our sample that the  
two colors, that in the warp and weft,  
give an interesting effect, and the mint  
green of the warp tends to turn the pink  
weft thread into a silvery grey. I'm sure  
that you could make many, many different  
interesting combinations of this material  
using some of the 100 different colors  
available.



DRAFTS AND DESIGNS

Published monthly (except July and August) by Robin & Russ Handweavers, 533 N. Adams St., McMinnville, Oregon.

SUBSCRIPTIONS: \$4.00 per year. Back issues or single copies, 50¢ each. Yearly subscriptions start with the September issue. If you subscribe after September, back issues from then on will be mailed to you, unless you specify that you want your subscription to start with the next September issue.

VOLUME 9, NUMBER 5, JANUARY, 1967

REED USED:

A 15 dent reed was used, and it was double sleyed, 2 ends per dent, or 30 threads per inch.

TREADLING SEQUENCE:

There are two major units of the treadling sequence, and we will call them the "A" Block and the "B" Block. There are 4 threads in each unit of the A block and there are 9 units or 36 shots in the A Block.

In the B Block, there are 7 units of 4 threads each or 28 threads in the B Block.

A BLOCK TREADLING

1. Treadle B, 4, B, 4.
2. Treadle B, 5, B, 5.
3. Treadle B, 4, B, 4.
4. Treadle B, 3, B, 3.
5. Treadle B, 2, B, 2.
6. Treadle B, 3, B, 3.
7. Treadle B, 4, B, 4.
8. Treadle B, 5, B, 5.
9. Treadle B, 4, B, 4.

B BLOCK TREADLING:

1. Treadle B, 3, B, 3.
2. Treadle B, 2, B, 2.
3. Treadle B, 1, B, 1.
4. Treadle B, 2, B, 2.
5. Treadle B, 1, B, 1.
6. Treadle B, 2, B, 2.
7. Treadle B, 3, B, 3.

This is the end of one complete pattern repeat. Repeat over and over as desired.

COST OF THREADS USED:

The 40/2 mercerized "Eggshell Natural" ramie comes on 1 lb. cones and is \$4.80 per lb.

The 20/2 mercerized "Honeydew Maize" ramie comes on 1 lb. cones and is \$5.00 per lb. You can also purchase 4 oz. spools of this color at \$1.25 per 4 oz. spool.

\* \* \* \* \*

MORE ABOUT THIS FABRIC:

First of all, the pattern is such a large repeat, that I'm afraid not all of you will see a complete repeat in our sample swatch this month. It will depend upon how it is cut, and we will try and give you the best complete repeat we can.

Secondly, I keep thinking that this would be a much more satisfactory pattern, if we used a 50/2 mercerized linen for warp at about 40 threads per inch, and then used a 40/2 or 30/2 mercerized linen for weft.

It would make the pattern more compact, and more distinct I believe.

Secondly, we did have some trouble with the #1 harness tending to be picked up and floating. You can resolve this problem by adding a weight on each end of your #1 harness on the top or the bottom. This floating tendency is true of many lace weaves and particularly of an 8 harness weave where 1 harness balances 7 to give you a plain weave. I also feel that on this particular 6 harness weave, you could eliminate some of this if you tied up the treadles exactly opposite of the tie-up we give you here in this bulletin. This would result in only 2 harnesses being raised on 4 of your pattern treadles, instead of 4 harnesses being raised as we have this tie-up.

On a weave of this type, I suggest that you use a firm, tight, double beat.

Another suggestion would be to set your warp at 36 per inch, use a 20/1 weft linen as your weft, and beat tightly, and this will make your pattern smaller, more compact, and will make a good pattern that could be used for hand-towels, etc.

COST OF THE FABRIC:

On a 7½ yard warp, 40" wide, it took 1 lb. 6 oz. of 40/2 ramie for warp. This comes to \$6.60, so the warp cost per yard is 88¢.

In the weft, we had 6 yards, 2" of finished fabric and it took 2 lbs. for the weft of the 20/2 merc. ramie. Thus the weft cost for 6 yards \$1.67 per yard.

WARP COST PER YARD.....	\$ .88
WEFT COST PER YARD.....	1.67
FABRIC COST PER YARD.....	\$ 2.55

LINEN SPECIAL: 40/2 bleached linen in skeins. Regular price is \$6.60 per lb. ON SPECIAL AT \$2.40 per lb. plus postage. About 100 lbs. left. Skeins vary in weight, and can be from 1¼ oz. to 1 lb-4oz



# drafts and designs

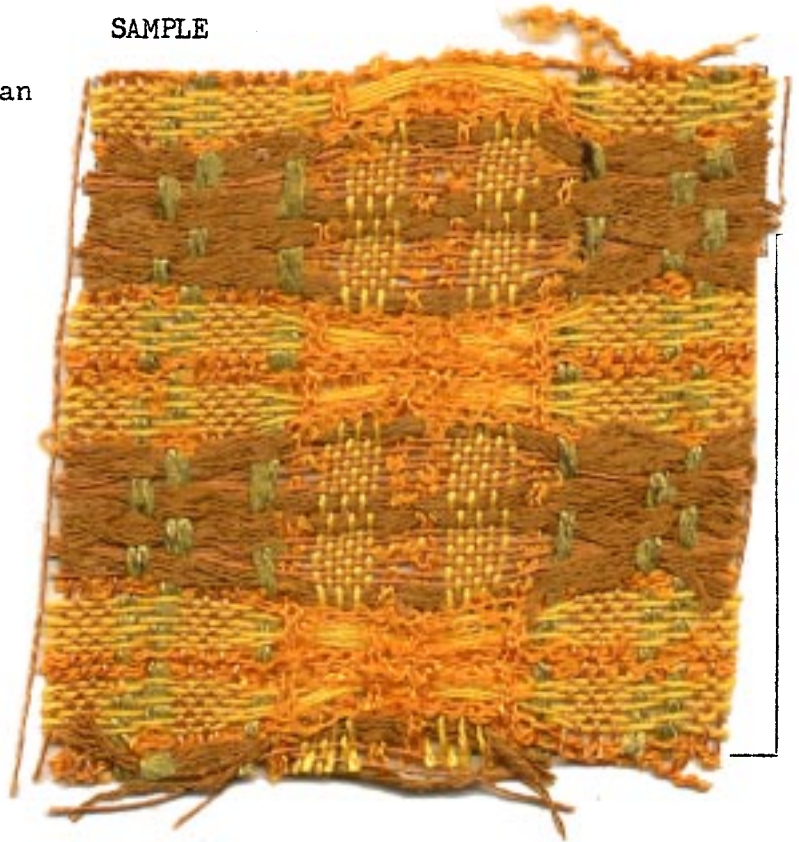
*a guide for 5 to 12 harness weaves*

Volume 9, Number 6, February, 1967

GOLDEN SUNSET

This is an interesting 8 harness weave which is very popular with the Scandinavian weavers for making a type of cell weave. This variation is planned for drapery.

SAMPLE



TIE-UP DRAFT

8	0		0		0	0	0			0	
7		0		0						0	
6	0		0								0
5		0		0		0	0	0	0		
4	0	0	0		0		0			0	
3					0		0	0			
2					0		0			0	
1			0	0		0		0	0		
	1	2	3	4	5	6	7	8	9	10	
								A	B		

WARP THREADS USED

- X - Orange Gold Rayon Boucle
- O - 16/2 Yellow Gold Swiss Ramie
- A - Chartreuse Linen and Rayon with a brown fleck

THREADING DRAFT

8	A	A					A	A					
7		B	B	B			B	B	B				
6			B	B	B		B	B	B				
5				A	A			A	A				
4						X	X			X	X		
3						O	O	O		O	O	O	
2						O	O	O		O	O	O	
1								X	X			X	X



## DRAFTS AND DESIGNS

Published monthly (except July and August) by Robin & Russ Handweavers, 533 N. Adams St., McMinnville, Oregon.

SUBSCRIPTIONS: \$4.00 per year. Back issues or single copies, 50¢ each. Yearly subscriptions start with the September issue. If you subscribe after September, back issues from then on will be mailed to you, unless you specify that you want your subscription to start with the next September issue.

VOLUME 9, Number 6, February, 1967

## WARP THREADS: (Continued)

B - 20/2 Mercerized Ramie, Golden Brown

Four different threads were used in the warp, and they are indicated in the threading draft, by the key to the colors given just above.

## WEFT THREADS USED:

There were also 4 threads used in the weft. Of these four, three of them are used in the warp, and one different thread was used with these three.

X - Orange Gold Rayon Boucle, which was doubled or 2 ends wound together on one bobbin.

O - 16/2 Ramie, Yellow Gold

A - 6 ends of 5½/2 Burma Gold Silk all wound together as one thread.

B - 20/2 Mercerized Golden Brown Ramie

## REED USED:

A 10 dent reed was used, and there was a special sleying of the reed.

## SPECIAL SLEYING OF THE REED:

The Orange Gold rayon boucle was single sleyed in the reed. The Chartreuse linen and rayon with brown fleck was also used singly in the reed. The other two threads, the 16/2 Yellow Gold Swiss Ramie and the 20/2 Mercerized Golden Brown Ramie were both double sleyed, 2 ends per dent.

## TREADLING SEQUENCE:

#1 - Orange Gold Rayon Boucle, doubled

#2 - 16/2 Swiss, Yellow Gold Ramie

#3 - 16/2 Swiss, Yellow Gold Ramie

#2 - 16/2 Swiss, Yellow Gold Ramie

#3 - 16/2 Swiss, Yellow Gold Ramie

#2 - 16/2 Swiss, Yellow Gold Ramie

#3 - 16/2 Swiss, Yellow Gold Ramie

#4 - Orange Gold Rayon Boucle, doubled or 2 ends on one bobbin.

#1 - Orange Gold Rayon Boucle, doubled

#2 - 16/2 Swiss, Yellow Gold Ramie

#3 - 16/2 Swiss, Yellow Gold Ramie

#2 - 16/2 Swiss, Yellow Gold Ramie

#3 - 16/2 Swiss, Yellow Gold Ramie

#2 - 16/2 Swiss, Yellow Gold Ramie

#3 - 16/2 Swiss, Yellow Gold Ramie

#4 - Orange Gold Rayon Boucle, doubled

#5 - 6 ends of 5½/2 Burma Gold Silk

#6 - 20/2, Merc. Ramie, Golden Brown

#7 - 20/2, Merc. Ramie, Golden Brown

#6 - 20/2, Merc. Ramie, Golden Brown

#7 - 20/2, Merc. Ramie, Golden Brown

#6 - 20/2, Merc. Ramie, Golden Brown

#7 - 20/2, Merc. Ramie, Golden Brown

#8 - 6 ends of 5½/2 Burma Gold Silk, wound 6 ends on one bobbin.

#5 - 6 ends of 5½/2 Burma Gold Silk

#6 - 20/2, Merc. Ramie, Golden Brown

#7 - 20/2, Merc. Ramie, Golden Brown

#6 - 20/2, Merc. Ramie, Golden Brown

#7 - 20/2, Merc. Ramie, Golden Brown

#6 - 20/2, Merc. Ramie, Golden Brown

#7 - 20/2, Merc. Ramie, Golden Brown

#8 - 6 ends of 5½/2 Burma Gold Silk wound 6 ends on one bobbin.

END OF ONE PATTERN REPEAT. Repeat over and over as desired.

## COST OF THE FABRIC:

Our fabric was set up this month to a 45" width warp, and we had a 10 yard warp. The total warp cost for this was \$14.46 so the warp cost per yard was \$1.45 for a 45" width material.

The weft threads used in a total of 9 yards of finished fabric came to \$22.86 for 9 yards, or the cost per yard comes to \$2.54 per yard.

WARP COST, 45" width, \$1.45 per yard

WEFT COST, 9 yards finished material came to \$22.86 or \$2.54 per yard.

## COST OF THREADS USED IN WARP AND WEFT:

1. Orange Gold Rayon Boucle, 1600 yards per lb., \$3.50 per lb.

2. The 16/2 Ramie, yellow gold, 2400 yards per lb. - \$5.00 per lb. or \$1.25 per 4 oz. spool.

3. Chartreuse rayon & linen with brown fleck. 1200 yards per lb. \$3.20 per pound on 1/2 lb. spools.

4. The 20/2 Mercerized Ramie, Golden Brown, has 3,000 yards per lb. Price \$5.00 lb., or \$1.25 per 4 oz. spool.

5. The 5½/2 slubby silk has 4,300 yards per lb. Price is \$4.80 per lb. It is available in 6 other colors.



# drafts and designs

*a guide for 5 to 12 harness weaves*

Volume 9, Number 7, March, 1967

A GENTLE UNDULATION:

This is an interesting seven harness weave, which gives an intriguing effect in an undulating weft thread.

WARP:

The warp is a 2 ply Tussah Silk in Natural called Taiwan Tussah.

WEFT:

There are 3 different threads used in the weft.

1. The main background thread is a 50% CASHMERE, 50% SILK COMBINATION in a natural color.
2. The gold colored background thread is a 5½/2 GOLD COLORED SILK, which we have wound triple on the bobbin.
3. The heavy white thread for use in the undulating effect is a rayon and cotton rug yarn, which comes in skeins.

REED USED:

We used a 10 dent reed, and double sleyed it, 2 ends per dent, or 20 per inch.

THREADING DRAFT:

7	X	X	X	X															
6					X	X	X	X											
5									X	X	X	X							
4													X	X	X	X			
3																X	X	X	X
2	X		X		X		X		X		X		X		X		X		X
1		X		X		X		X		X		X		X		X		X	

SAMPLE



DRAFTS AND DESIGNS

Published monthly (except July and August) by Robin & Russ Handweavers, 533 N. Adams St., McMinnville, Oregon.

SUBSCRIPTIONS: \$4.00 per year. Back issues or single copies, 50¢ each. Yearly subscriptions start with the September issue. If you subscribe after September, back issues from then on will be mailed to you, unless you specify that you want your subscription to start with the next September issue.

VOLUME 9, NUMBER 7. MARCH, 1967

TREADLING SEQUENCE:

Because of the sequence of colors in our sample, our treadling looks long and involved, but it really is much simpler than it looks.

TREADLE AS FOLLOWS:

1. Treadle 1,8,1,8,9,8,1,8,1 cashmere
2. Treadle #10, heavy white
3. Treadle 2,8,2,8,9,8,2,8,2 cashmere
4. Treadle #10, heavy white
5. Treadle #3,8,3,8,9,8,3,8,3 gold silk
6. Treadle #10, heavy white
7. Treadle #4,8,4,8,9,8,4,8,4 cashmere
8. Treadle #10, heavy white
9. Treadle #1,8,1,8,9,8,1,8,1 cashmere
10. Treadle #10, heavy white
11. Treadle #2,8,2,8,9,8,2,8,2 gold silk
12. Treadle #10, heavy white
13. Treadle #3,8,3,8,9,8,3,8,3 cashmere
14. Treadle #10, heavy white
15. Treadle #4,8,4,8,9,8,4,8,4 cashmere
16. Treadle #10, heavy white
17. Treadle #1,8,1,8,9,8,1,8,1 gold silk
18. Treadle #10, heavy white
19. Treadle #2,8,2,8,9,8,2,8,2 cashmere
20. Treadle #10, heavy white
21. Treadle #3,8,3,8,9,8,3,8,3 cashmere
22. Treadle #10, heavy white
23. Treadle #4,8,4,8,9,8,4,8,4 gold silk
24. Treadle #10, heavy white

END OF ONE PATTERN REPEAT WHICH SHOWS THE COMPLETE ROTATION OF COLORS IN THE SAMPLE.

There are a total of 120 shots in one complete repeat, to show the entire color sequence.

MORE ABOUT THE THREADS USED:

In the warp, we used the 2 ply Taiwan Tussah Silk, which has 2900 yards per lb., and is \$4.80 per lb.

In the weft, we had three different threads. The CASHMERE AND SILK YARN has approximately 2400 yards per lb., and it is \$4.80 per lb.

The heavy white, cotton and rayon rug yarn has approximately 70 yards per 2 oz. skein and is 35¢ per skein.

The gold silk is a 5<sup>1</sup>/<sub>2</sub> douppioni silk with 4300 yards per lb. We tripled it, and wove it with 3 ends on one bobbin. It is \$4.80 per lb.

COST OF THE FABRIC:

SOMETIMES, I hate to give you the cost of such a fabric as it is I feel high. But, we must also consider that this is an all silk or silk and cashmere fabric, except for the heavy white cotton and rayon rug yarn we used for the rib.

It took 8,000 yards of warp for a 10 yard warp, 40 inches wide. This comes to slightly less than 3 pounds, so the warp cost was \$13.20 or \$1.32 per yard, 40" wide.

In the weft, we found it takes 3 oz. of gold silk per yard, 3-3/4 oz. of the cashmere & silk per yard, and approximately 1 skein of the heavy cotton & rayon rug yarn per yard. So the total weft cost per yard is \$2.32 per yard.

WARP COST PER YARD, 40" WIDTH... \$1.32  
 WEFT COST PER YARD..... 2.32  
 FABRIC COST PER YARD..... \$3.64

TIE-UP DRAFT:

7		0		0		0	0			
6	0	0			0			0		
5	0					0		0		
4			0		0		0	0		
3			0	0		0		0		
2	0	0	0	0	0	0	0		0	
1	0	0	0	0	0	0			0	0
	1	2	3	4	5	6	7	8	9	10
								A	B	

MORE ABOUT THIS FABRIC:

It was fun to weave this fabric, and I had no great problems in the weaving. While weaving it, I kept thinking of the various uses, and came up with upholstery, drapery, unusual coat material, a sort of pull over poncho with the undulating white strips running up and down, or weaving crosswise, decorative fabric use such as pillows, and a few others I'll not mention.

The idea for this sample comes from the Mary Kirby book, which is out of print, but also, my sample has been altered and the treadling and tie-up changed somewhat so that it bears no resemblance to her sample.

If you look at the threading draft, you really can see that this is actually a five block summer and winter threading draft, with 2 repeats of each block.



# drafts and designs

*a guide for 5 to 12 harness weaves*

Volume 9, Number 8, April, 1967

SAGE AND OLIVE:

An interesting 8 harness weave for unusual coating material woven of two tweed yarns.

WARP:

Two threads are used in the warp. They are both 1-1/4 run wool tweeds made of New Zealand wool. One color was a sage green (X), and the other color was the dark olive tweed yarn with flecks of green and yellow. (O). Both of these yarns have approximately 2,000 yards per lb.

WEFT:

The same two threads are used in the weft that were used in the warp.

REED USED:

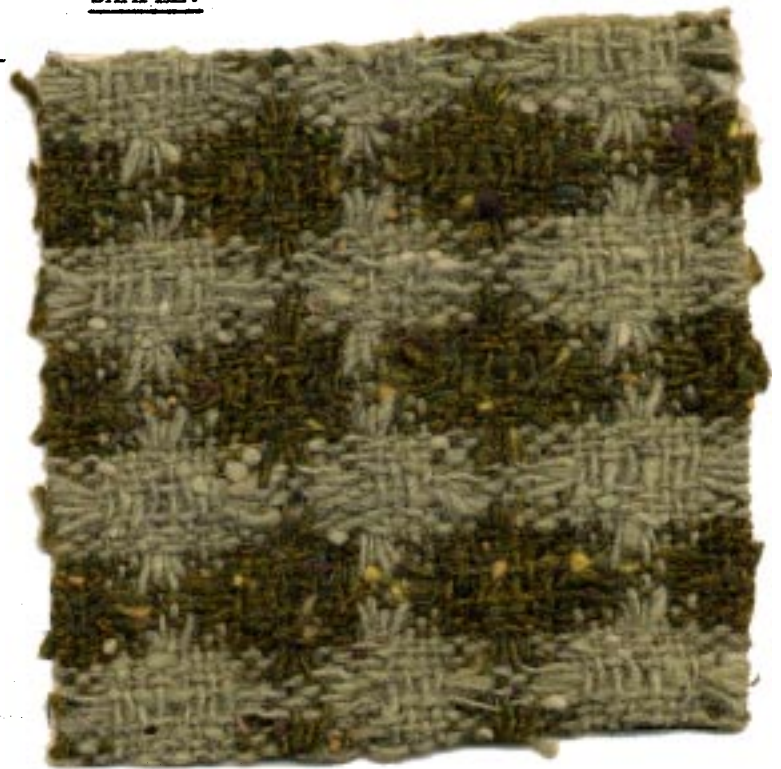
A 10 dent reed was used, and it was double sleyed, 2 ends per dent, or 20 threads per inch.

THREADING DRAFT:

8			0		0															
7				0		0														
6	0		0				0		0											
5		0		0				0		0										
4											X		X							
3												X		X						
2						X		X						X		X				
1							X		X						X		X			

KEY TO THREADS IN THE WARP:

- X - Dark Olive Wool tweed with flecks
- 0 - Sage Green Wool tweed with flecks





DRAFTS AND DESIGNS

Published monthly (except July and August) by Robin & Russ Handweavers, 533 N. Adams St., McMinnville, Oregon.

SUBSCRIPTIONS: \$4.00 per year. Back issues or single copies, 50¢ each. Yearly subscriptions start with the September issue. If you subscribe after September, back issues from then on will be mailed to you, unless you specify that you want your subscription to start with the next September issue.

VOLUME 9, Number 8, April, 1967

THREADS USED AND COST OF YARDAGE:

We had an 8 yard warp, 40" wide on the loom. It took 1 lb. 8½ oz. of the olive green, and 1 lb. 11 ½ oz. of the sage green for the 8 yard warp. Thus the total warp cost was \$1.28 per yard.

From this 8 yard warp, we received 6 and 2/3rds yards of fabric, measured about a week after taking it off the loom. On the loom before cutting it off, I imagine that it measured about 7 yards, so that you can see when the tension was released, there was more take up. In the weft it took 1 lb. 2½ oz. of the dark olive green tweed, and it took 1 lb. 1½ oz. of the sage wool tweed. Thus the weft cost was \$1.09 per yard.

WARP COST PER YARD, 40" WIDE....\$1.28

WEFT COST PER YARD, 40" WIDE.... 1.09

FABRIC COST PER YARD.....\$2.37

MORE ABOUT THIS FABRIC:

From weaving this fabric, there were two or three things that I should mention that might help you. First, we had it at 20 threads per inch, and we felt that perhaps if it had been 18 per inch or 2 per dent in a 9 dent reed, that it would have packed in a little tighter or firmer, and thus for coat material, would be more satisfactory. This fabric was woven with a fairly hard, firm, double beat to help make it as firm as possible.

Also, we found that the sage green wool tweed was not quite as strong as was the olive wool tweed, and we had an occasional thread of this pull apart.

Still another thing is that we find this is easier to weave on this particular pattern if you do use a stretcher or temple. It helps keep the fabric wider, and also helps eliminate some of the frayed broken warp threads you might have.

Also, we do all our weaving on the sectional warping method. We have no trouble with this thread when we do it this way. However, when loose and slack, you will find that this

tweed has a tendency to twist with itself or the thread next to it. So, it can provide some trouble for the inexperienced weaver who uses it in a chain warp, if he does not keep it fairly tight or taut all the time.

TIE-UP DRAFT:

8			0	0		0	0	
7		0			0	0	0	
6	0	0	0			0		
5	0		0	0			0	
4	0	0		0	0			
3	0	0	0			0		
2		0			0	0	0	
1	0				0	0	0	
	1	2	3	4	5	6	7	8

TREADLING SEQUENCE:

1. Treadle # 1 - Sage Green Tweed
2. Treadle # 2 - Sage Green Tweed
3. Treadle # 1 - Sage Green Tweed
4. Treadle # 2 - Sage Green Tweed
5. Treadle # 3 - Sage Green Tweed
6. Treadle # 4 - Sage Green Tweed
7. Treadle # 3 - Sage Green Tweed
8. Treadle # 4 - Sage Green Tweed
9. Treadle # 1 - Sage Green Tweed
10. Treadle # 2 - Sage Green Tweed
11. Treadle # 1 - Sage Green Tweed
12. Treadle # 2 - Sage Green Tweed
13. Treadle # 8 - Dark Olive Wool Tweed
14. Treadle # 7 - Dark Olive Wool Tweed
15. Treadle # 8 - Dark Olive Wool Tweed
16. Treadle # 7 - Dark Olive Wool Tweed
17. Treadle # 6 - Dark Olive Wool Tweed
18. Treadle # 5 - Dark Olive Wool Tweed
19. Treadle # 6 - Dark Olive Wool Tweed
20. Treadle # 5 - Dark Olive Wool Tweed
21. Treadle # 8 - Dark Olive Wool Tweed
22. Treadle # 7 - Dark Olive Wool Tweed
23. Treadle # 8 - Dark Olive Wool Tweed
24. Treadle # 7 - Dark Olive Wool Tweed

END OF ONE COMPLETE PATTERN REPEAT.

There are 24 threads in one repeat.

COST OF THREADS USED:

These wool tweeds are over-runs or surplus yarns from a large manufacturing company, and we are thus able to sell them at \$3.20 per lb. The same colors are not always available, but for the past year, we have always had from 15 to 18 different colors of this yarn on hand at all times. The price on this weight yarn has always been the same. At present, we have about 8 to 10 different shades of greens on hand, so you can see what colors are popular in fashion.



# drafts and designs

*a guide for 5 to 12 harness weaves*

Volume 9, Number 9, May, 1967

## GOLDEN SUNSHINE

This is another drapery sample in an undulating weft effect, that is planned as a co-ordinate with the sample we had in our February issue.

## THREADING DRAFT:

8	A			A					
7		B	B	B		B	B	B	
6		B	B	B		B	B	B	
5				A				A	
4						X			X
3							O	O	O
2							O	O	O
1								X	

## TIE-UP DRAFT

8	0		0		0	0	0		0	
7		0		0					0	
6	0		0							0
5		0		0		0	0	0	0	
4	0	0	0		0		0			C
3					0		0	0		
2					0		0		0	
1			0	0		0		0	0	
	1	2	3	4	5	6	7	8	9	10
								A	B	

## WARP THREADS USED

- X - Orange Gold Rayon Boucle
- O - 16/2 Yellow Gold Swiss Ramie
- A - Chartreuse Linen and Rayon with a brown fleck
- B - 20/2 Mercerized Ramie, Golden Brown

*Sample on next page*

Four different threads were used in the warp, and they are indicated in the threading draft, by the key to the colors given.

## WEFT THREADS USED

In the weft we used three different threads, as listed herewith.

1. Yellow, heavy cotton boucle with 1,000 yards per lb.
2. White rug yarn, 75% rayon, 25% cotton.
3. Perle 3 cotton, color Canary Yellow.

## SLEYING OF THE REED:

All of the A's and X's in the threading draft were sleyed 1 end per dent. All of the O's and B's were sleyed two ends per dent.



DRAFTS AND DESIGNS

Published monthly (except July and August)  
by Robin & Russ Handweavers, 533 North Adams  
St., McMinnville, Oregon.

SUBSCRIPTIONS: \$4.00 per year.  
Back issues or single copies, 50¢ each.  
Yearly subscriptions start with the September  
issue. If you subscribe after September,  
back issues from then on will be mailed to  
you, unless you specify that you want your  
subscription to start with the next September  
issue.

VOLUME 9, Number 9, May, 1967

REED USED

A 10 dent reed was used with a special  
sleying of the reed.

T H R E A D S P E R I N C H

Because of the special sleying of the  
reed, we have a total of 16 threads per inch.

T R E A D L I N G S E Q U E N C E

1. Treadle 4,3,2,1 with perle 3, Canary
2. Treadle 9, Yellow cotton boucle
3. Treadle 1,2,3,4 with perle 3, Canary
4. Treadle 10, Yellow cotton boucle
5. Treadle 4,3,2,1 with perle 3, Canary
6. Treadle 9, White cotton rug yarn
7. Treadle 8,7,6,5 with perle 3, Canary
8. Treadle 9, Yellow cotton boucle
9. Treadle 5,6,7,8 with perle 3, Canary
10. Treadle 10, Yellow cotton boucle
11. Treadle 8,7,6,5 with perle 3, Canary
12. Treadle 9, White cotton rug yarn
13. Treadle 4,3,2,1 with perle 3, Canary
14. Treadle 9, Yellow Cotton boucle
15. Treadle 1,2,3,4 with perle 3, Canary
16. Treadle 10, yellow cotton boucle
17. Treadle 4,3,2,1 with perle 3, Canary
18. Treadle 9,10,9, with white rug yarn
19. Treadle 8,7,6,5 with perle 3, Canary
20. Treadle 9, Yellow cotton boucle
21. Treadle 5,6,7,8 with perle 3, Canary
22. Treadle 10, Yellow cotton boucle
23. Treadle 8,7,6,5 with perle 3, Canary
24. Treadle 9, white cotton rug yarn
25. Treadle 4,3,2,1 with perle 3, Canary
26. Treadle 9, Yellow cotton boucle
27. Treadle 1,2,3,4 with perle 3, Canary
28. Treadle 10, Yellow cotton boucle
29. Treadle 4,3,2,1 with perle 3, Canary
30. Treadle #9, white cotton rug yarn
31. Treadle 8,7,6,5 with perle 3, Canary

32. Treadle 9, Yellow cotton boucle
  33. Treadle 5,6,7,8 with perle 3, Canary
  34. Treadle 10, Yellow cotton boucle
  35. Treadle 8,7,6,5 with perle 3, Canary
  36. Treadle 9,10,9, white cotton rug yarn
- END OF ONE COMPLETE PATTERN REPEAT. DO  
THIS OVER AND OVER AS DESIRED. Please  
remember that there are a total of 94  
shots of weft in one complete pattern re-  
peat.

COST OF THREADS USED & YARDAGE PER LB.

The Orange gold rayon boucle has approx.  
1600 yards per lb., comes on 1/2 lb. spools,  
and is \$3.50 per lb.

The 20/2 Golden Brown Ramie is mercer-  
ized, has 3,000 yards per lb., and is avail-  
able on 1 lb. cones or 4 oz. spools. Price  
is \$5.00 per lb., or \$1.25 per 4 oz. spool.

The chartreuse 2 ply rayon with some  
linen has occasional brown flecks. It is  
\$3.20 per lb., is available on 1/2 lb.  
spools, and has approximately 1200 yards  
per lb.

The 16/2 Yellow Gold ramie has 2400  
yards per lb., and is priced at \$5.00 per  
lb. Available on approximately 1 lb. tubes  
or 4 oz. spools.

The perle 3 cotton in Canary Yellow has  
1250 yards per lb., and is \$3.40 per lb.,  
on 1 lb. cones.

The yellow cotton boucle has about  
1000 yards per lb., and is available on  
1 lb. cones at \$3.70 per lb.

The white rayon and cotton rug yarn  
comes in 70 yard skeins, and is 35¢ per  
skein.

COST OF THE FABRIC:

In the warp, it took 9 oz. of 20/2  
golden brown ramie, 10 oz. of yellow  
gold ramie, 9 oz. of the green rayon and  
linen, and 6 oz. of the orange gold rayon  
boucle. We had a 7 yard warp. Thus, the  
total warp cost for 7 yards 40" wide, was  
\$9.07.

In the weft, it took 2 lbs. 14 oz. of  
the perle 3 Canary Yellow cotton, and 9  
oz. of the yellow cotton boucle and 7½  
skeins of white rug yarn. We used this  
in 6 yards of weft. The total weft cost  
was \$14.51 or \$2.42 per yard.

WARP COST PER YARD.....	\$1.30
WEFT COST PER YARD.....	2.42
FABRIC COST PER YARD.....	<u>\$3.72</u>

\* \* \* \* \*





# drafts and designs

*a guide for 5 to 12 harness weaves*

Volume 9, Number 10, June 1967

## THE WILD ONE

A six harness weave is featured this month in an all wool fabric that we suggest for coat material.

## THREADING DRAFT

6	0 0	X X
5	0 0	X X
4	0 0	X X
3	0 0	X X
2	0 0	X X
1	0 0	X X

## KEY TO THREADS IN THE WARP

O - Sage Green Wool Tweed  
X - Gold colored Wool Tweed

## WARP

There are two threads in the warp. Both are a 1-1/4 run wool tweed with 2,000 yards per lb. One is a gold colored thread and the other is a sage green colored tweed.

## WEFT

There are two of the 1-1/4 run wool tweed threads in the weft. One is a light aqua-blue colored tweed, and the other is a light pink wool tweed. Both have 2,000 yards per lb.

## REED USED

A 10 dent reed was used, and it was double sleyed, 2 ends per dent, or 20 threads per inch

## SAMPLE



## TREADLING SEQUENCE

1. Treadle #1, pink wool tweed
  2. Treadle #2, pink wool tweed
  3. Treadle #1, pink wool tweed
  4. Treadle #2, pink wool tweed
  5. Treadle #3, pink wool tweed
  6. Treadle #4, pink wool tweed
  7. Treadle #3, pink wool tweed
  8. Treadle #4, pink wool tweed
  9. Treadle #5, pink wool tweed
  10. Treadle #6, pink wool tweed
  11. Treadle #5, pink wool tweed
  12. Treadle #6, pink wool tweed
- (Continued on other side)

DRAFTS AND DESIGNS

Published monthly (except July and August) by Robin & Russ Handweavers, 533 North Adams St., McMinnville, Oregon.

SUBSCRIPTIONS: \$4.00 per year. Back issues or single copies, 50¢ each. Yearly subscriptions start with the September issue. If you subscribe after September, back issues from then on will be mailed to you, unless you specify that you want your subscription to start with the next September issue.

VOLUME 9, Number 10, June 1967

- 13. Treadle #1, aqua wool tweed
  - 14. Treadle #2, aqua wool tweed
  - 15. Treadle #1, aqua wool tweed
  - 16. Treadle #2, aqua wool tweed
  - 17. Treadle #3, aqua wool tweed
  - 18. Treadle #4, aqua wool tweed
  - 19. Treadle #3, aqua wool tweed
  - 20. Treadle #4, aqua wool tweed
  - 21. Treadle #5, aqua wool tweed
  - 22. Treadle #6, aqua wool tweed
  - 23. Treadle #5, aqua wool tweed
  - 24. Treadle #6, aqua wool tweed
- END OF ONE COMPLETE PATTERN REPEAT.  
Repeat over and over as desired.

TIE-UP DRAFT

6			0		0	0
5				0	0	0
4	0		0	0		
3		0	0	0		
2	0	0			0	
1	0	0				0
	1	2	3	4	5	6

MORE ABOUT THIS FABRIC

First of all, we washed and pressed this material, and feel how soft it actually is. This tweed is made out of wool imported from New Zealand, and is a good quality wool tweed.

Many persons hesitate to use this as a warp thread, but more and more we find it easy to use, and very little trouble results in the weaving.

We have had the occasional knots pull loose and these we take care of by the use of spee-dee cement on all of the colored threads. We notice that the spee-dee cement shows up when used on the natural or white, but does not seem to show up when used in

colored threads to glue the broken warp ends together.

This thread (all four colors) is a wool tweed called a 1-1/4 run wool tweed. This is a figure used by many manufacturers to designate the size and yards per lb. to such yarns. A one run yarn has 1600 yards per lb., so thus a 1-1/4 run would have 2,000 yards per lb.

We do notice slight variations in the yardages per lb., in this type of thread, but these four seem to be quite close in size.

This yarn is in the oil, and when it is washed, it finishes out slightly lighter in color than it appears in oil. This oil tends to darken the color in appearance, and I do not know whether it is the natural oil of the fleece or whether oil has been added. I tend to think that in this yarn it is the natural oil or lanolin that is found in the wool.

I wish that we had the equipment to do it, but this particular piece of yardage would nap beautifully, and give you a high raised effect. Some of the yarn and fabric finishers have equipment to do this, and it is amazing what a difference it makes in the finished fabric.

If any of you are interested, I'd suggest that you nap it yourself. You can do this with a fairly fine brush, and continued brushing will raise a nap on this fabric quite easily.

This fabric is very easy to weave, with a firm medium, even, double beat being used. Beat lightly, change to the next shed and beat again, and this tends to eliminate any clinging of the warp threads, and thus makes it much easier to weave.

COST OF THE FABRIC

We had a warp almost 41" wide, and 7 1/2 yards in length. It took 1 lb. 9 oz. of the sage green and 1 lb. 8 oz. of the gold wool tweed. Thus the total warp cost came to \$9.80, or the cost per yard is \$1.31 per yard.

We had 6 yards and 9 inches of finished fabric from this warp. It took 1 lb 2 oz. of the aqua blue wool tweed in the weft, and it took 1 lb. 4 oz. of the light pink wool tweed. Thus the weft cost for 6-1/4 yards was \$7.60 or the cost per yard came to \$1.22.

WARP COST PER YARD.....	\$ 1.31
WEFT COST PER YARD.....	1.22
FABRIC COST PER YARD.....	\$ 2.53