

G A R D E N S T U D I O Q U A R T E R L Y

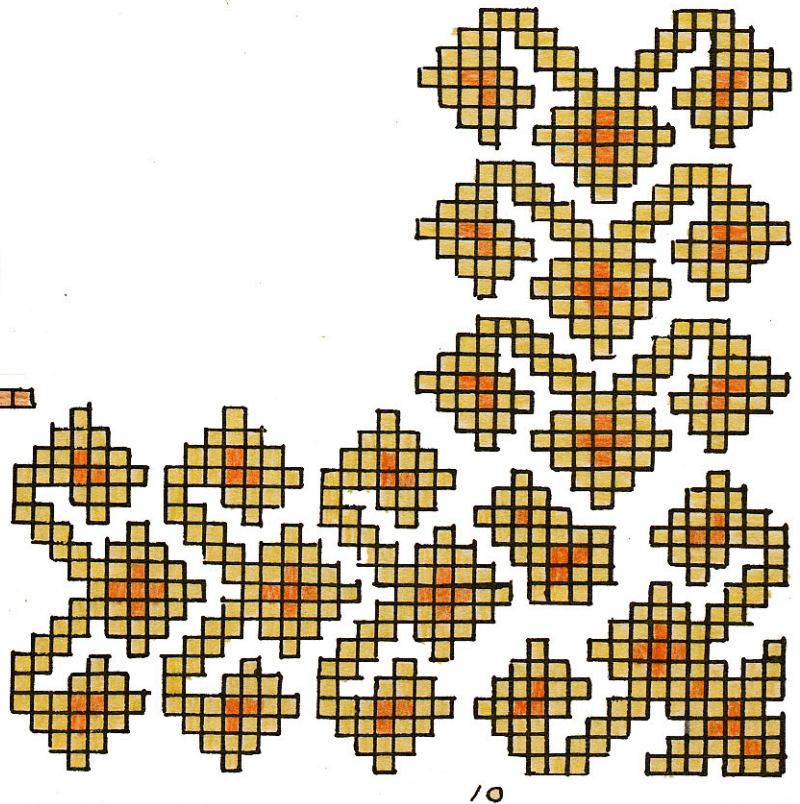
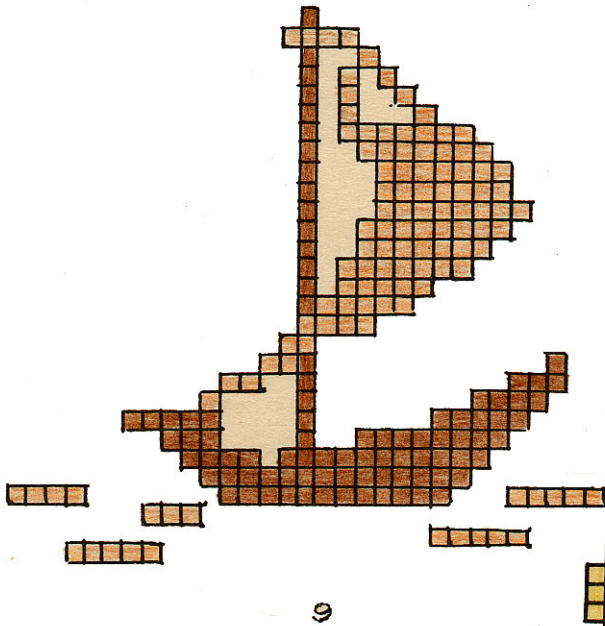
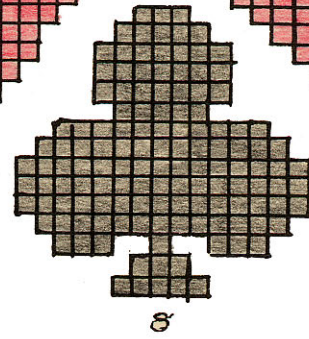
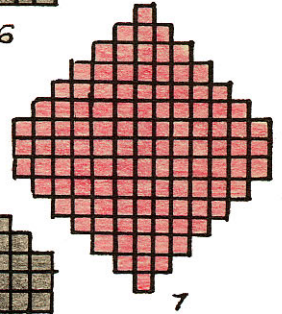
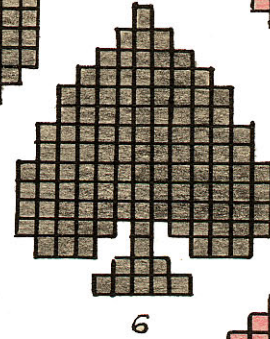
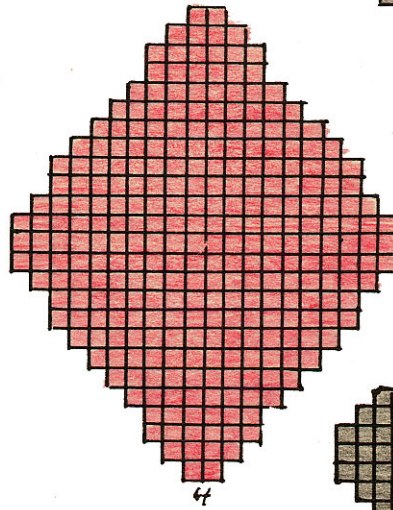
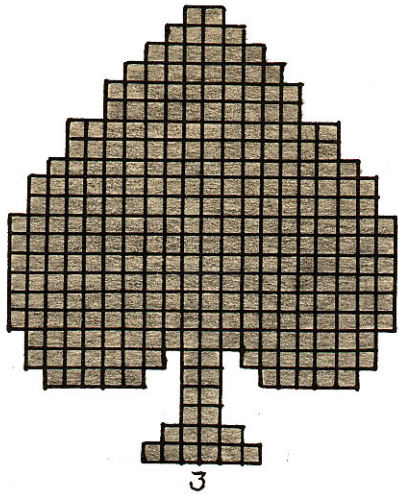
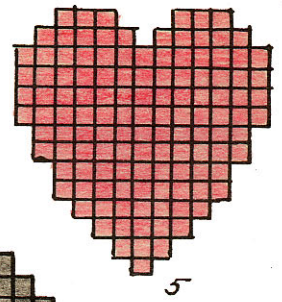
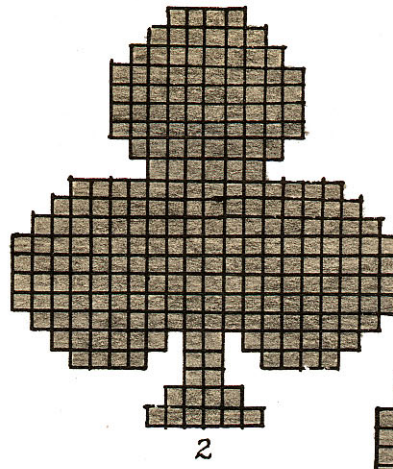
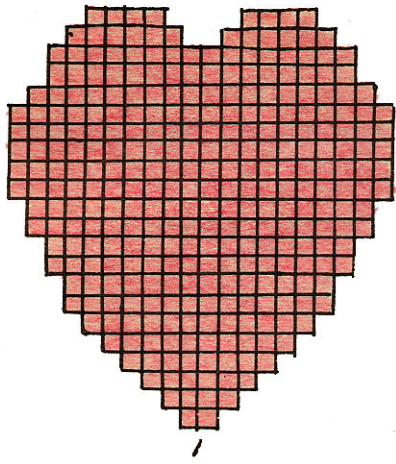
a n d

W E A V I N G S E R V I C E

Volume 1 Number 1

January 1933.

Myra L. Davis & Kate Van Cleve



Bridge Cloth and Napkins.

Warp - Bernat's linen 40/2 or cotton 20/2 sleyed 24 threads to the inch. For a 36 inch cloth thread the loom for 38 inches to allow for shrinkage, and allow 4 yards of warp for one cloth and four napkins. This will need about 2/3 lb. of linen or 1/2 lb. of cotton.

Weft - About 3/4 lb. Bernat's white linen size 14, 4 oz. white linen floss, and 2 oz. each of red and black either linen floss or Perle cotton.

The design in each corner is in Swedish Embroidery weave using either the floss or the cotton. The latter is more satisfactory because it has more lustre.

After the warp is beamed, set in 6 lines of the white linen floss on each side of the warp, setting the 1st in the same heddle and dent with the 60th thread in from the right edge. Skip 1 thread, - put in the 2d, skip 1 and put in the 3d. Skip 25 threads and set the other 3 lines in the same way. Do the same on the left side. The lines for one cloth should be cut $2\frac{1}{2}$ -3 yards long. They are tied with the warp into the apron on the cloth beam, and the other ends are wound around weights which will keep them at the same tension as the rest of the warp, and allowed to hang over the whip beam at the back of the loom. Lead dress weights answer the purpose very well. If several cloths are to be woven, the lines, cut proportionately longer, may be wound twice around the warp beam, then the remainder wound on spools strung on a cord and suspended just below the warp beam by fastening the ends of the cord to the corner posts of the loom.

Weave $3\frac{1}{2}$ inches, then weave in lines of linen floss to match the side lines. Weave $\frac{1}{2}$ inch, then begin the figures - one in each corner, and set in 12 threads from the inside line of floss. When the center of the cloth is finished, weave the other two figures which must be reversed.

Allow 3 inches for shrinkage in the center of the cloth.

Two napkins may be woven at once on this width warp. Set the lines in the same way, setting the 1st line 45 threads in from the right edge, and with 20 threads between the groups of 3 lines. Measure 8 inches for the center of the napkin, then set the other lines. Set the lines for the second napkin, counting in from the left edge. Three might be woven at once, but it is better to weave only two.

The cloth is hemmed on the ends, and the napkins on four sides with a $\frac{1}{4}$ inch hem.

Natural linen weft with the white lines and colored figures makes a very attractive set.

NOTE - It is always best to stitch or run all hand woven material before cutting. The directions for running are given in the October Quarterly.

Curtains

Swedish Embroidery Pattern.

Warp loom 36 inches wide, 20 or 24 threads to an inch.

Warp 20/2 cotton for warp.

Weft 20/2 cotton like warp or number 20 weaving special linen

Color for Pattern, - Bernat's Perleen with the cotton weft; and linen floss with the linen.

Hem two inches, space one-half inch, border about four inches.

Weave heading $\frac{3}{4}$ inch cotton.

Weave $5\frac{1}{4}$ inches of cotton or linen weft material beaten lightly.

Open shed for pattern as given in the October Quarterly, by pulling up the harnesses for 3 threads up and 1 down (or if you want to weave your pattern right side up use harnesses to leave 3 threads down and 1 up). Place thread for the beginning of pattern, setting it in $4\frac{1}{2}$ inches from the right for hem and margin space. Use one block of three threads for each square of pattern, proceed as with Swedish embroidery weaving and after the border at the bottom is finished, continue up the right side for the full length of the curtain. Add $\frac{3}{4}$ inch cotton for heading then a heavy thread to separate the curtains.

When the heading for the second curtain is woven continue border on the right side reversed for the same distance as used in the first curtain, then reverse corner and bottom border. Weave $5\frac{1}{4}$ inches for hem. Heading $\frac{3}{4}$ inches.

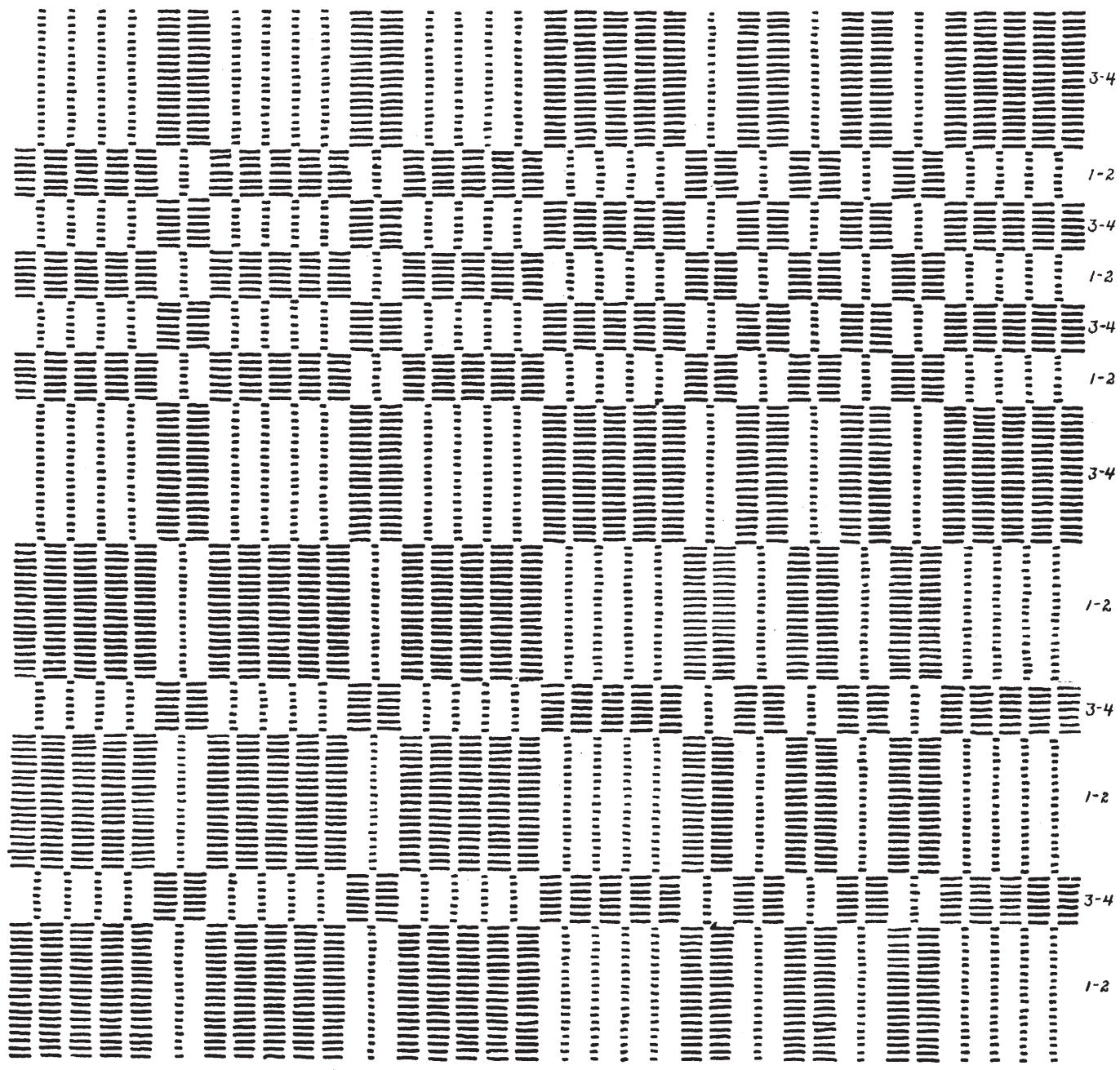
In planning the length of your curtains allow 3 inches per yard for shrinkage when the curtains come off the loom.

Beat material lightly throughout curtain.

DANISH DRAFT

B

A



Towels

Danish Pattern.

Finger towels:- Warp 20/2 cotton.
Weft 20 weaving special linen in natural or colors.
Binder fine white linen.
15 Dent reed use 2 threads to a dent.
12 Dent reed use 3 threads to a dent.

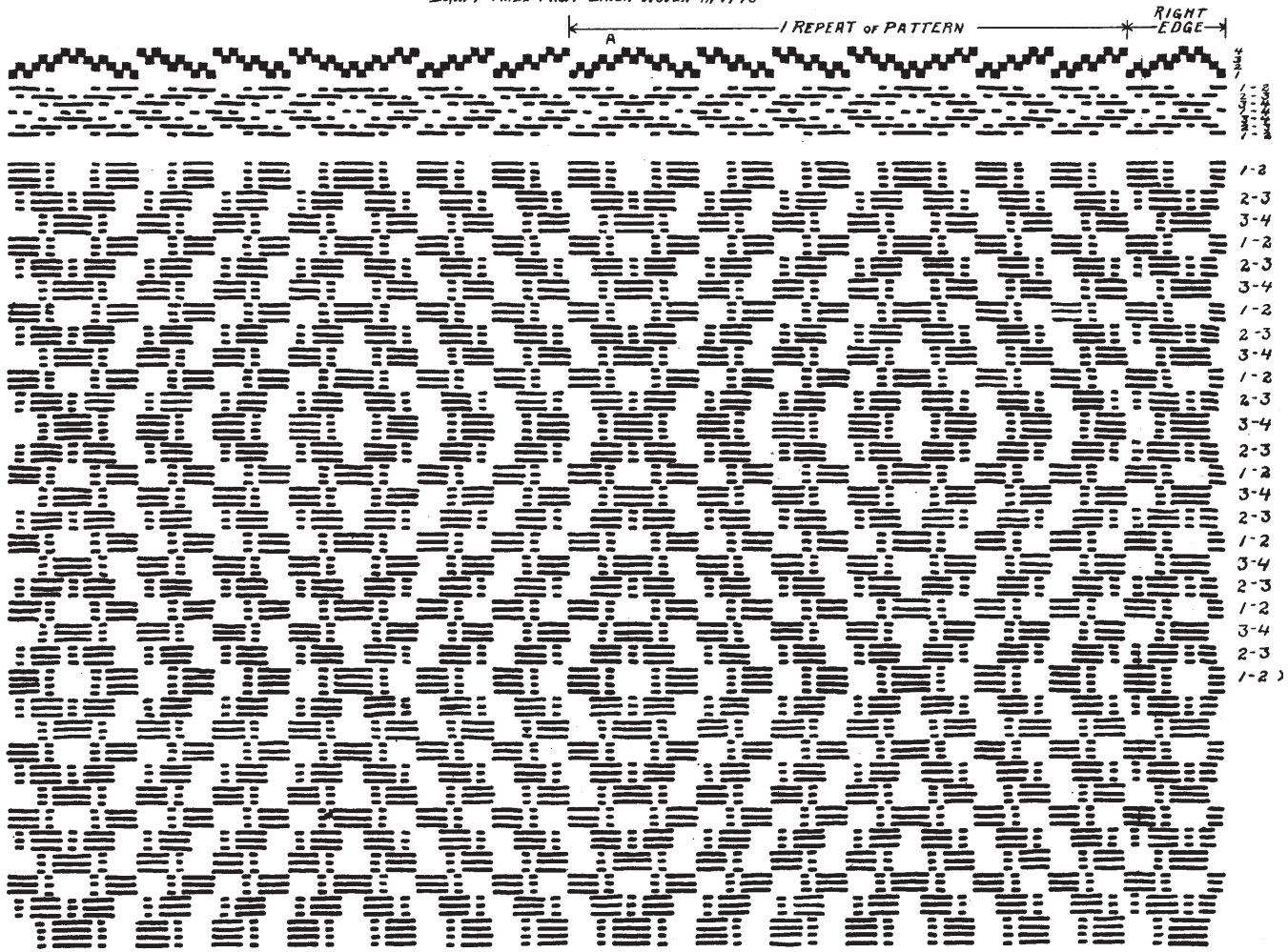
Make a warp of 371 threads. If you use a 12 dent reed threaded 3 threads to a dent, your towel will be a little over 9 inches wide finished; and is also a good width for narrow runners for old fashioned step bureaus. This Danish pattern, which was drafted from the original weaving, is very attractive made using two colors or two tones of one color to match a color scheme in the room where it is to be used. Weave 17 inches for finger towels including heading and hems. A 6 yard warp will weave 8 or 9 finger towels if they are not cut off until all are finished. In using 2 colors alternate them by blocks throughout the pattern, as 1st block of 3-4 orange yellow, next block of 1-2 yellow, then 3-4 in orange yellow and continue.

In threading the Danish pattern use 4-3-2-1 for selvage. Then begin at right of draft, thread two full repeats of the pattern, then the third time thread from A to B, (73 threads) and add the second selvage 1-2-3-4. Use a double thread through the 1st and last heddles and dents.

Boat Design.

The boat this month is good on guest towels of plain weaving for the summer home, with a colored hem to go with the predominating color in the boat,- for example, use a deep cream or ivory linen for the towel, a deeper wood brown for hem, sail of boat and lines in water, and dark brown for two or three lines at upper edge of hem (where you sew it), and boat and mast. Hem $\frac{3}{4}$ inch finished.

DRAFT MADE FROM LINEN WOVEN IN 1775



Luncheon Set.

Warp - Bernat's 40/2 linen or 20/2 cotton. 453 threads sleyed 24 to the inch. This will give 5 full repeats of the draft with a 6th repeat ending on A. Then thread 1 thread on the first harness to complete the left edge.

Weft - Linen Special - blue No. 205 for the pattern, and white size 20 for the binder.

For a runner 18x36 and 6 doilies 12x18, approximately $\frac{1}{2}$ lb. of linen or $\frac{1}{3}$ lb. cotton will be needed for a 6 yard warp, and 6 oz. of each of the weft linens.

Weave 2 inches plain with the white for the hem which will be $\frac{3}{4}$ inch wide when finished. Then, with the blue and without a binder, weave the little border given at the top of the draft; put in 4 rows of plain weaving with the white and then begin the pattern. The treadling is given at the side of the draft, and, after weaving the desired length, the runner and doilies end with the combination marked X.

A very attractive set may be woven with white linen for the pattern and natural linen for the binder. The original of this draft was a tablecloth woven in 1775 of a beautiful ivory toned hand spun linen for both pattern and binder.

Allow 3 inches to the yard for shrinkage.