

G A R D E N   S T U D I O   Q U A R T E R L Y

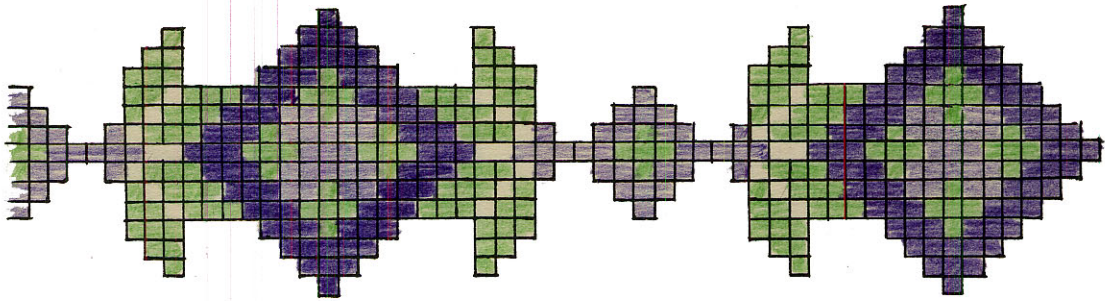
a n d

W E A V I N G   S E R V I C E

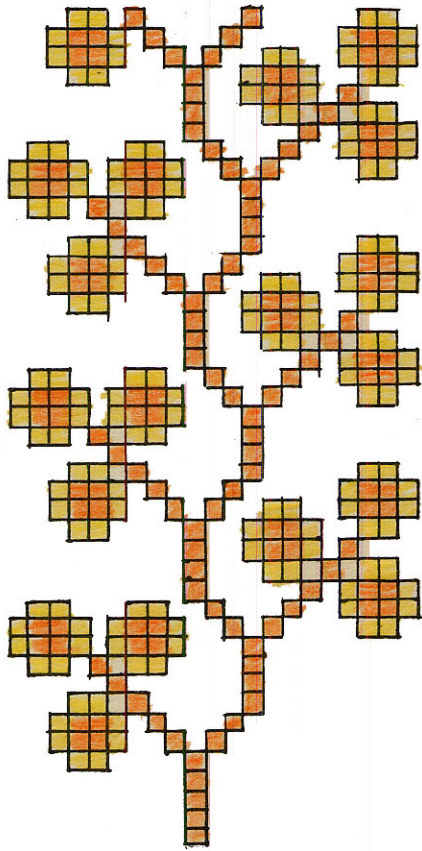
Volume II      Number IV

October    1934.

Myra L. Davis & Kate Van Cleve



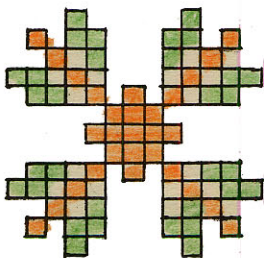
1



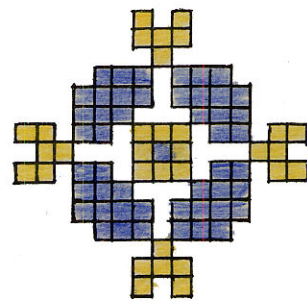
2



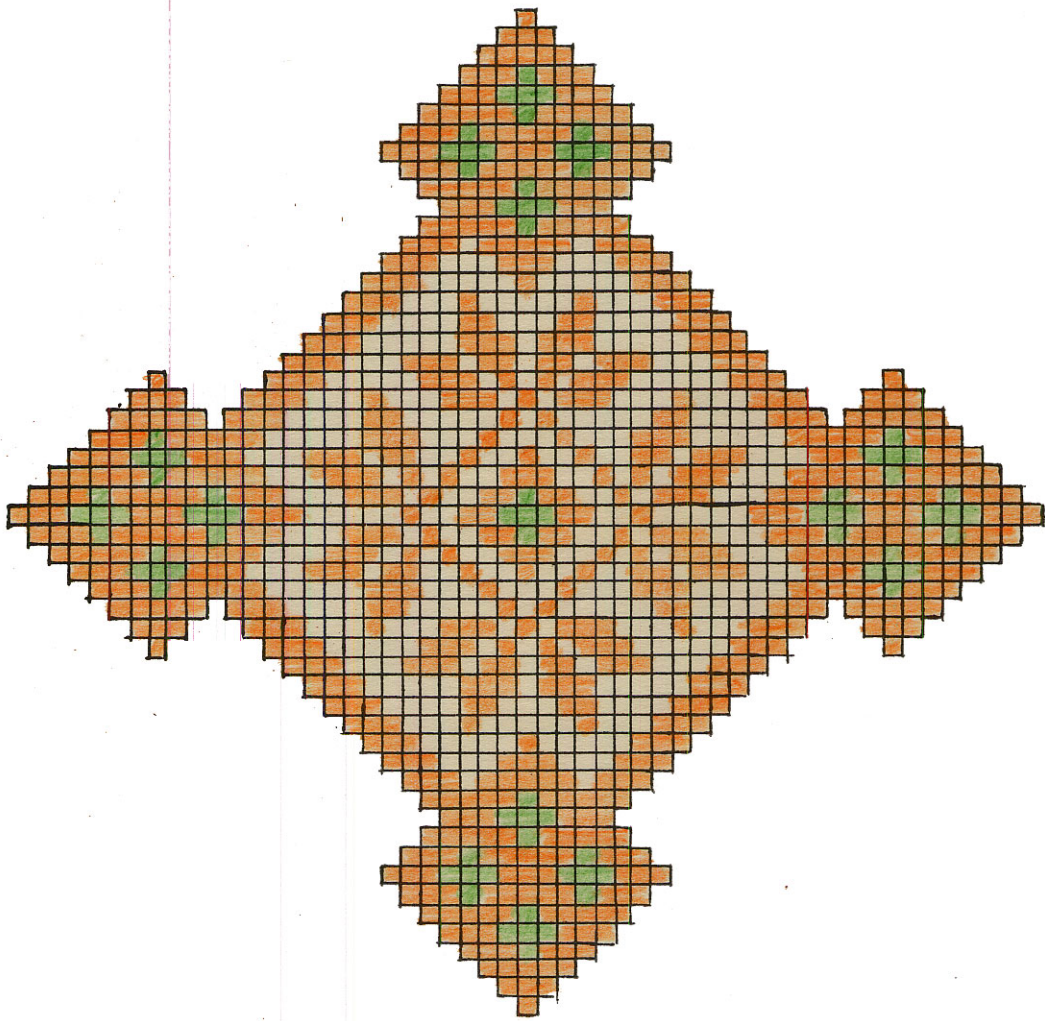
3



4



5



Design number 1 is interesting in Swedish embroidery for the ends of a bureau scarf.

Warp - 18 inches wide, 30 ends to an inch. 40/3 white linen -  
572 threads.

Weft - Linen special white, number 20.

Violet and green linen weaver for the patterns.

Threading - Twill Weave 1-2-3-4 1-2-3-4.

Weave (1/2 inch heading of warp.  
5 inches linen special in plain weaving.

Open shed (bringing up three threads leaving 1 down if you are working from the wrong side or if you want your work right-side up in front of you - 1 thread up and 3 threads down) run a black or dark thread through to assist in making the counting easier - continue as given in the October 1932 Quarterly for Swedish embroidery weave.

The center of the bureau scarf will be plain weaving.

This same design may also be used in the center of each side of a bridge cover starting with one figure in the center of the front after allowing for the hem of plain weaving, the pattern is about 10" in width used with 3 threads up and 1 down. The design in the sides should be started at one end of the pattern and the same distance from the edge as planned for the hem on the 1st side.

Design #2 may be used in Swedish embroidery. Weave as a border down the side of a curtain and it is about two inches in width when used with 2 threads up and 1 thread down and 30 threads to an inch or two and three fourths inches when used with 3 threads up and 1 down.

Design #3, a parrot, may be used for children's bibs, tray covers, bureau scarfs, etc., in French embroidery weave.

Design #4 and #5 for guest towels, cocktail napkins, pin cushion covers and other small articles.

Design #6 may be used for corners of a table cover in Swedish embroidery weave, use natural colored linen, 962 threads for warp, this will make it about 32 inch wide.

15 dent reed threaded 2 threads to a dent.

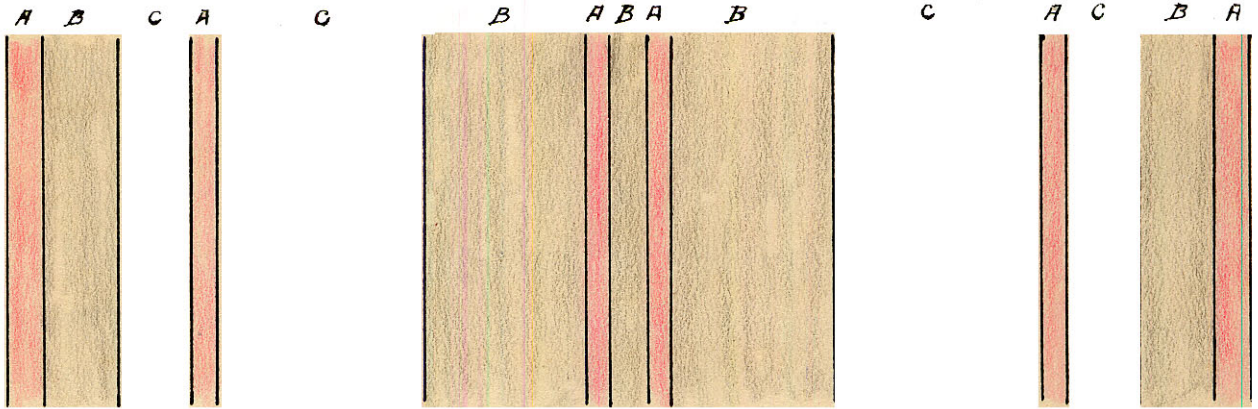
Weave 6 inches plain, then space the pattern 288 threads in from the right edge and 288 threads in from the left edge.

---

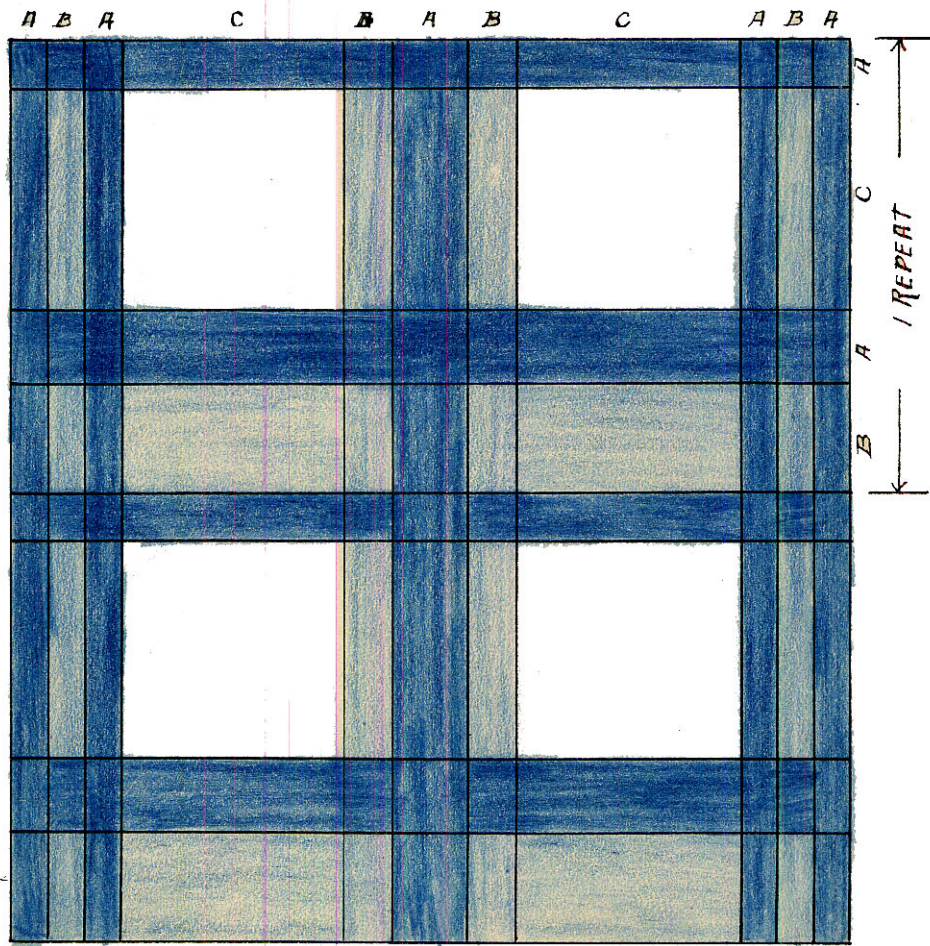
Note: - We are able at this time to offer you warp beam filled with 20 yards white and tan Fabri and white spun silk for the 600 structo loom at \$4.00.

Warp beam for the 420 structo loom warped with gold or Egyptian cotton at \$3.00.

STRIPE FOR WOOL SCARF



PLAID FOR WOOL SCARF



## WOOL SCARF

Threading - The same as for twill 1-2-3-4, 1-2-3-4.

15 dent reed, 1 thread to a dent.

Material - Lady Helen wool makes a very soft scarf, the Spanish stocking yarn and angora wool make most attractive scarfs or a few warp threads of the soft angora combined with either of the other is good.

In the stripe the colors are used in making the warp and the color you wish to predominate is used for the weft.

A was a Chinese lacquer red angora

B black Lady Helen wool

C Gray Spanish stocking yarn

The weft was the black in Lady Helen wool.

### Number II

A Jade green

B Dark gray

C Light gray

The weft light gray

Warp - The warp is made as follows for the first Scarf.

A - 3 threads red

B - 6 " black

C - 6 " gray

A - 2 " red

C - 17 " gray

B - 13 " black

A - 2 " red

B - 3 " black (center reverse for 2nd half of warp)

## PLAID

If a coarse wool is used a 12 dent reed should be used, 1 thread thru each dent. Shetland or one of the wools with a rayon strand both make interesting effects when woven in either stripes or plaids.

In this plaid the spacing of half the warp threads are given in the drawing. Starting at the right the warp would be made as follows:-

A	-	3	threads	dark	blue
B	-	3	"	medium	blue
A	-	3	"	dark	blue
C	-	18	"	light	blue
B	-	4	"	medium	blue
A	-	6	"	dark	blue
B	-	4	"	medium	blue
C	-	18	"	light	blue
A	-	3	"	dark	blue
B	-	3	"	medium	blue, this is the center of warp, reverse for the 2nd half.

The color repeat for the weft threads is given in the spacing of the drawing.

B will begin at the bottom of scarf.

Fringe should be knotted in groups of 3 or 4 threads depending upon the weight of yarn used.





## ZIPPER PURSE

The draft used is taken from one of the illustrations in the John Speck book in the Pennsylvania Museum. John Speck was a weaver in 1723, and his book is the earliest dated collection of hand weaving designs in America.

Warp - 233 ends of 20/2 cotton set 30 ends to the inch.

Pattern, No. 5 Perle cotton, Homespun yarn or silk,  
2 tubes.

Weft - Binder, No. 10 Perle cotton, 1 tube.

For a purse with a 7 inch zipper, thread the right selvage, one repeat of the draft and from A to B, then add the left selvage.

Weave one-half inch of fine heading, then approximately 11 inches of pattern, and the fine heading.

When making up the purse, stitch the zipper on the wrong side of the lining, this is more easily done if the lining is in two parts. Stitch on the inside pocket which should be made double to give it more body, and then sew up the seams. The outside is made separately and blind stitched to the lining at the edge of the zipper, or, if one prefers, one-half inch may project beyond the zipper on each side to conceal it. This extra inch should be allowed for in the weaving.

Make a 4 strand braid 12 inches long of the pattern yarn, using strands enough to make a braid one-fourth inch wide. Put it through the tab on the zipper and tie in a square knot three-quarters of an inch from the ends which should be unbraided to form tassels. Directions for making braids of more than three strands are given in the Quarterly for April 1933.

This pattern is very attractive for upholstery material, using 36 threads to the inch. No. 5 Perle cotton or Homespun yarn with No. 20 Perle cotton for the binder makes an excellent fabric. For a cushion or table square, weave three repeats of 3-4, 2-3, 1-2, 1-4, then go on with the treadling given.

Suggestions for color combinations:-

Pattern.	Binder
Golden brown and dark	
Dark brown	" light green
Medium blue	" green
Dark green	" light green on tan warp
Blue green	" gold