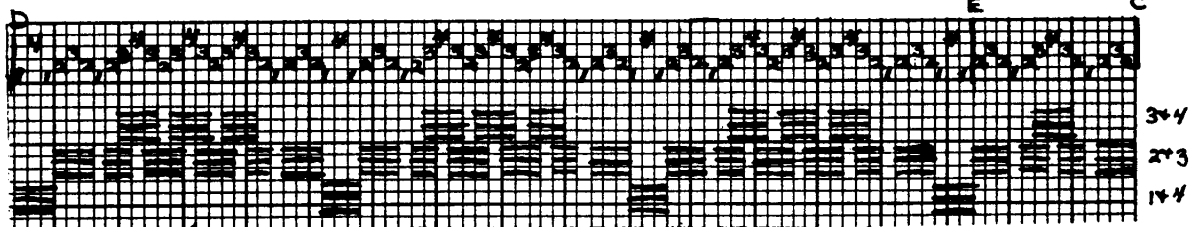
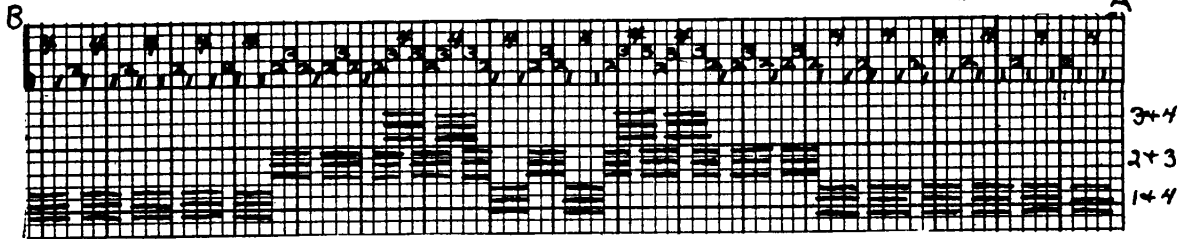


Handweaving News

Key draft for Luncheon Set arranged by
Mrs. Lillian Cowley.



Pattern Threading "Crackle" Weave with Border AB added to #219.



Some More "Crackle" Weave Patterns.

The patterns designed in this month's News are some we evolved from the inspiration of the ancient Schleelein book at the Pennsylvania Museum. One half of one repeat is given at Figure No.1 below of #219 of that book. These patterns were without doubt planned for many more harnesses, but it is possible to use three blocks out of a possible four to weave these on a four harness loom by using the "crackle" weave or "Jamtlandvav" technique of threading drafts. No border is given with the original design, but several different arrangements are given here to show how borders can be added to any desired pattern.

The check draft is drawn out for the pattern threading given above so one can get the woven effect. The tieup is as for a regular four harness loom, 1&2, 2&3, 3&4, and 4&1, with plain weave 1&3, and 2&4. The numbers written at the right on the check draft indicate the harnesses as the pattern is drawn down, and as they would be for weaving on a loom where the harnesses sink when the treadle is pushed down.

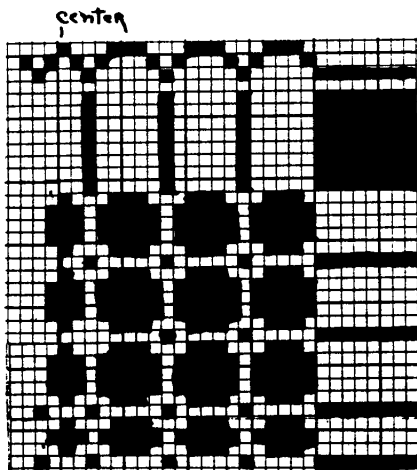


Figure No.1

For a loom like the Structo where the harnesses rise when the levers are brought down, transpose the treadling to read levers 1&2 for 3&4; 1&4 for 2&3; and 2&3 for 1&4. No.20 mercerized cotton or 40/2 linen can be used for a warp of 540 threads, set at 30 threads to the inch. Weft can be natural raw silk with linen tabby or a heavy white rayon with tabby in linen color.

Thread the pattern draft into the loom as follows,-
Thread first two heddles on right edge double - 2 threads
Border A to B - 85 "
C to D 4 times 88 - 352 "
E to C once - 13 "
End Border B to A " - 85 "
Last three heddles on left double - 3 "
Total 540 "

9 spools of Structo ready wound warp may be used if desired for this.

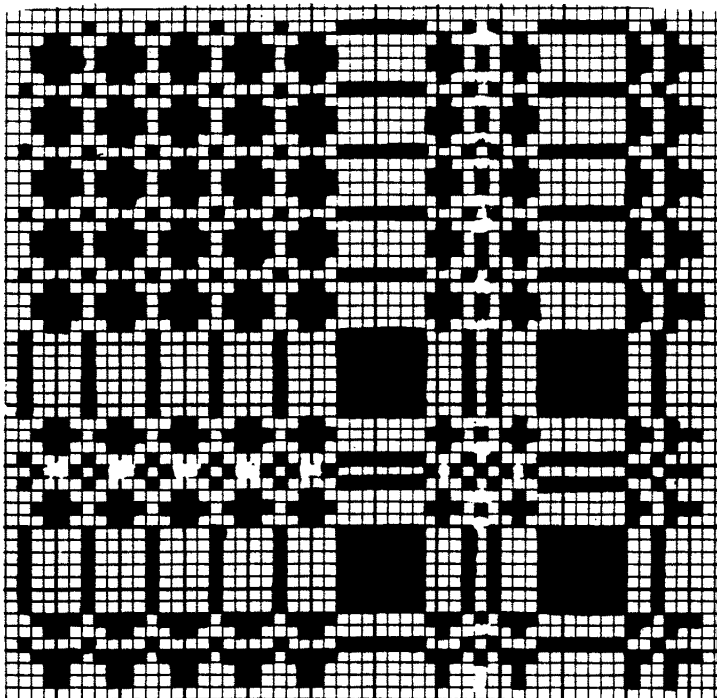
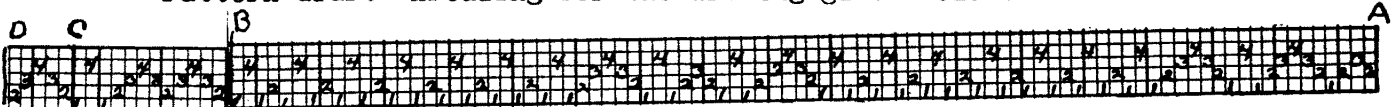
Count for heddles,- Harness 1- 126, harness 2-177, harness 3- 144, and harness 4- 93. Total 540.

Treading directions for Pattern on Page 1. As no drawing is given of this draft the directions for the weaving are given. Raw silk was used for the weft and is about the same weight as a shetland yarn. Three single strands of No.20 mercerized cotton, pale blue, pale green, and pale orange were used together for the plain weave after each pattern weft. For end border A, weave 23-12 X, always repeat this block to weave a square if using other weft yarns. Finer weft would have to be woven more times to make the block square, and also the rest of the directions in proportion. To continue, - 12-4x, 14-4x, 23-2x, 12-2x, center of border, repeat back to beginning in same order. Then for the center, B 12-4x, 14-2x, 12-4x. For C, 23-2x, 12-4x, 14-8x, 12-4x, repeat all of C three times. Then repeat B and then C for the center as many times as desired, end with B and then repeat A for the border of the other end. This can be used for a runner, for a pillow, or for a table square if desired.

At Figure No.2 below is given another arrangement of a border and similar type of pattern planned and woven by Mrs. Helen Hill. Both the corner and the center give a different effect from that of the pattern above, a diamond figure comes up as when weaving a summer and winter pattern. This is planned for a warp of 420 threads for a luncheon set, and can be of No.20 mercerized cotton or of 40/2 linen with weft of white linen weaver for the pattern and pink 40/2 for the plain weave tabby. Or a natural fine knitting cotton with pink No.20 mercerized cotton for tabby may be used. Warp is set at 30 threads to the inch and threaded into the loom as follows, -

Thread first two heddles double	- 2 threads	
Then from A to B once	- 90 "	
" " B to C 29 x 8	- 232 "	Tieup is the same as for
" " C to D	- 5 "	regular four harness loom
" " B To A	- 90 "	1&2, 2&3, 3&4, and 4&1, with
Thread last heddle double 1		1&3 and 2&4 for plain weave.
		Transpose for the Structo
		loom as usual.
	<u>Total 420 threads</u>	

Pattern draft Threading for the drawing given below.



Weaving directions, -

For A, the edge border.

- 12-4x,
- 14-2x,
- 23-2x,
- 12-2x,
- 14-2x,

Then for B, the corner square.

- 23-20x
- 12-2x,
- 14-2x,
- 12-2x,
- 23-2x,

14-2x, center of this border, repeat back to beginning of B, in same order.

For the Center C.

- 12-2x,
- 14-2x,
- 12-2x,
- 23-2x,

repeat for as much as desired, alternate a plain weave shot after every shot of the pattern weft.

Figure No.2

The design shown at Figure No.3 is another arrangement of the same sort with a different border. This is planned for a small table cover or a wide runner. The idea for this came from a 15 harness damask pattern in "Hemmetts Vavbok" by Elisabeth Waern-Bugge. The same kinds of material can be used for this as described for the first two designs. Linen tabby with white rayon weft is an excellent combination. Make a warp of 720 threads of No.20 mercerized cotton or 40/2 linen natural.

To thread the pattern threading, - Thread a right selvage 1,2,3,4, - 4 threads

Count for heddles.	
Harness #1	-246
" #2	-188
" #3	-114
" #4	-172
Total	720

Then from A to B 3x 18	-	-54	"
B to C once	-	89	"
C to D 3x 18	-	54	"
D to E 11x 28	-	308	"
E to F once	-	11	"
D to C 3x	-	54	"
C to B once	-	89	"
B to A 3x	-	54	"
Left selvage thread 4,3,2,-	-	3	"

Figure 3. Threading Draft.

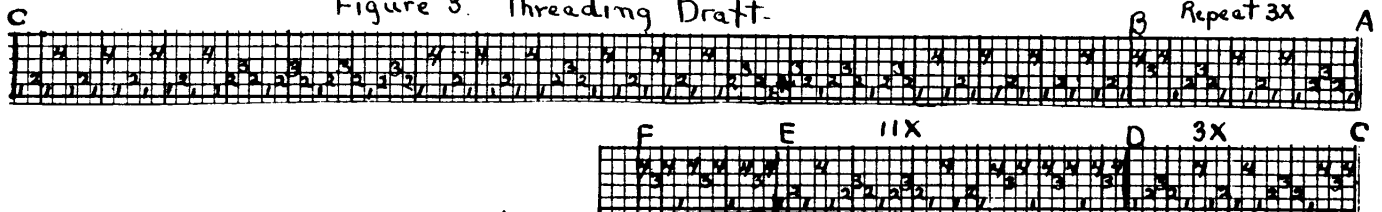
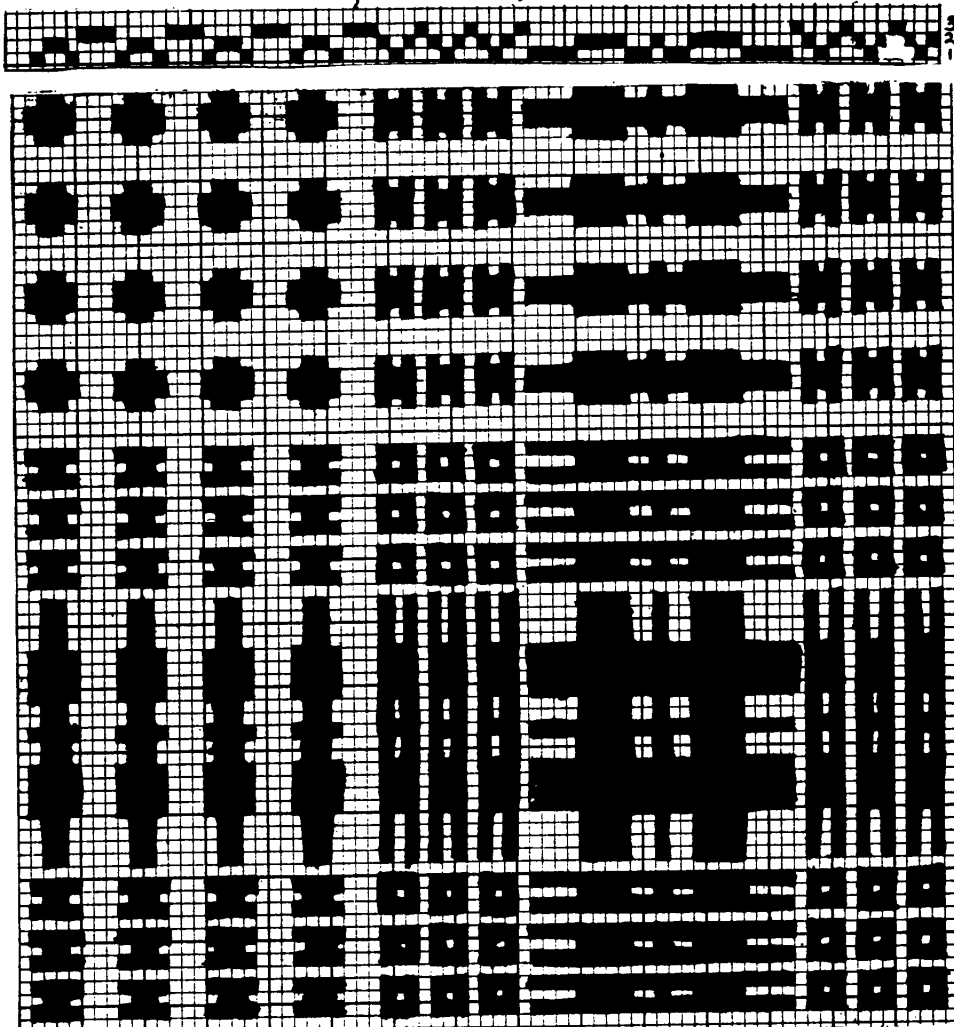


Figure 3. Key Draft.



Tieup - The regular four harness loom tie-up is used, but only two of the pattern blocks are woven, namely block 2 and block 1. Note how these are alternated to get the effect of the pattern. The spaces between should be woven in plain weave to keep the effect of the separate pattern design. But of course there is no reason why the third block could not be woven but the effect would be different. Note also how the key draft at the top of the pattern design is written. It is easier in general to follow the effect of the drawing than to use a set of treading directions for these patterns due to the fact that different yarns require different number of shots, and also people beat differently too.

Figures at side of drawing indicate 1st and 2nd pattern blocks. To weave use 2 & 3 for block 2, and 1&2 for block 1. For this with Structo loom levers use, 1&4 for block 2, and 3&4 for block 1.