

HANDWEAVING NEWS

Figure No.1

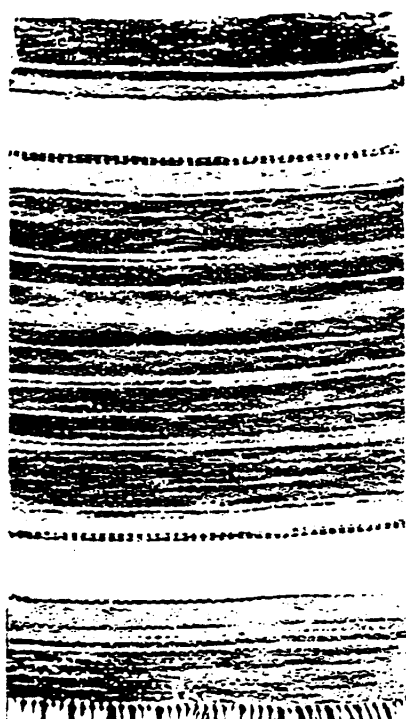


Figure No.3

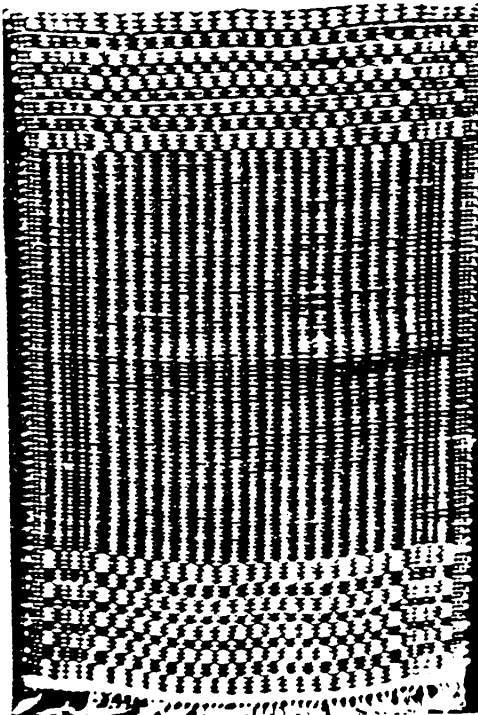
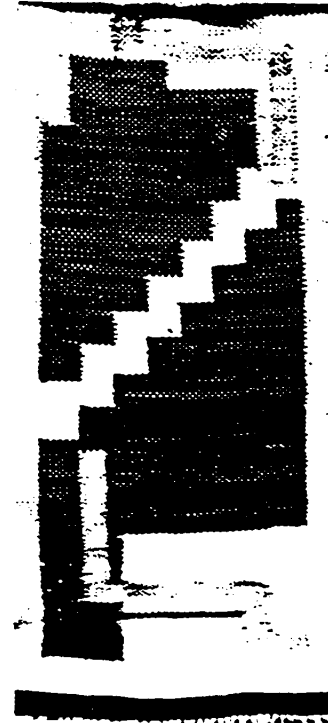


Figure No.2



A Variety of Rugs.

The rugs described this month have all been woven in my Wayne University weaving classes this spring, and as I have received several requests for some rugs, they are being presented here. and I hope they will prove of interest.

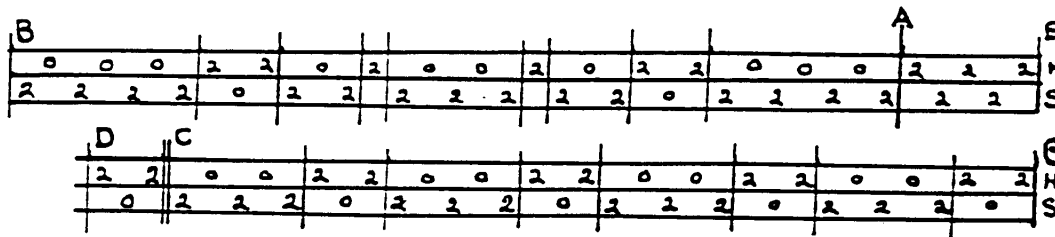
Rug No.1 is a simple rag rug, but thick, heavy and very durable. It was woven on a 19/4 cotton threaded double in the heddles. Sley this 2 threads in a dent of a 12 dent reed, skip 2 dents, and sley double in the next dent, and so on for the width of the warp. Left of this rug was unbleached cotton, 10 yards at 8¢ a yard, dyed in three shades of blue, light, medium, and dark. One half yard was dyed a bright scarlet red. This red was cut into short lengths from 4 to 6 inches and laid in with the blue weft at intervals in the center of the rug. A very narrow border of this was woven on the ends, by alternating a shot of red and a shot of light blue four times. Beat hard to entirely cover the warp. Size of this rug is 20"x36". It may be woven on any plain weave set up or on a two harness loom if desired, and it is rather different from the usual 2 harness rag rug.

Rug No.2 This is also a rag rug. It was woven on the same warp and set up as rug No.1. The weft was all new plain color precale; beige, medium blue, and dark brown. The weft strips were cut about 3/4th inches wide. The interlocked weft tapestry technique was used for the weaving throughout. Draw out the design on paper the same size as the rug, pin this beneath the warp threads, or measure from the design for the length of the weft colors. Size of this rug 22"x 46". This rug was woven by Marjorie McKay, and rug No.1 by Clara Stone. Both of these rugs were accepted and shown at the Annual Art Exhibit of Wayne University student work at the Detroit Art Institute June 2 - 16th of this year.

The technique use for this rug was described in detail in Handweaving News for March of 1940. This is still available if anyone wishes to have it. Cost is 45¢ each. Many other designs are of course possible in this technique, and I hope this will be of interest to News subscribers.

Rug No.3 at the top of Page 1 was woven on the new two harness "Hearthside" loom which has just been put on the market by Sears & Roebuck Co. This loom is a two harness heddle loom and sells for \$10.98. It weaves about 26" wide and is sold warped and threaded with five yards of carpet warp. It is an excellent value for the money, and a strong, durable, portable loom. Make a warp of 268 threads. This fills 207 holes and slits of the heddle.

Two Harness Threading Draft for Rug No.3
on Page 1.



Explanation of the Threading Draft above. In the threading draft above there are two lines. One line H which represents the holes of the heddle, and one line S which represents the slits of the heddle. The 0's on the draft mean to omit or skip a hole or a slit of the heddle according to the line on which the 0 may be in the draft. The 2's mean two warp threads threaded into either a hole or a slit, according to the line on which they occur in the draft. Thread as follows, -

E to A on the draft is the border,	uses 10 threads	or	5 holes & slits
A to B " " "	" 42 "	"	33 " "
B to C " " " is the center,	" 160 "	"	126 " "
repeat from B to C, 4 times.	" 4 "	"	3 " "
D to C once,	" 42 "	"	33 " "
then starting at B, thread to A	" 10 "	"	5 " "
A to E, for end border.			
	<u>Total warp 268</u>		<u>207</u> " "

Materials needed. 2 tubes natural carpet warp. Weft 2 skeins of Maysville Rug Filler white and 2 skeins of Rose were used for the rug shown. Any other color combination desired may be used. Grey and Rust color, Tan and Brown, Light and Dark Blue etc. are other suggestions. But it is necessary to use two contrasting colors for this type of rug or the pattern will not show up much. The warp is almost entirely covered, and the weft beats up to make a thick heavy rug which will stay on the floor well.

Weaving the Rug. Weave a heading of carpet warp $\frac{1}{2}$ inch wide. No true plain weave is possible. Wind two shuttles, one with white rug filler and one with rose. Put through a shot of white rug filler, change heddle to change shed, and throw in a shot of rose rug filler. Fasten in the ends of the white and rose weft. Repeat this alternation until there are 4 shots of each color, changing the shed each time the weft is passed through the shed. This is the first pattern block. For the second pattern block, put in a shot of white weft in the same shed as the last shot of rose weft, without changing the heddle. To finish the second pattern block, put in a shot of rose, then white, rose, white, rose; changing the shed as usual each time the weft is put through. To begin the third block put a shot of white weft in the same shed as the last shot of rose of the second block, then alternate as before rose, white, rose, white, rose, changing the shed each time. We are now ready to begin the 4th block, and from here on it will be understood that the first shot of white for the next pattern block is always put through in the same shed as the last shot of rose on the preceding block. Also when weaving watch the alternation of the two colors at the edges of the warp, and try to keep as even edges as possible. Also take care not to pull in the weft threads. Let them lie loosely in the shed as they are put in, before beating them close.

