

HANDWEAVING NEWS

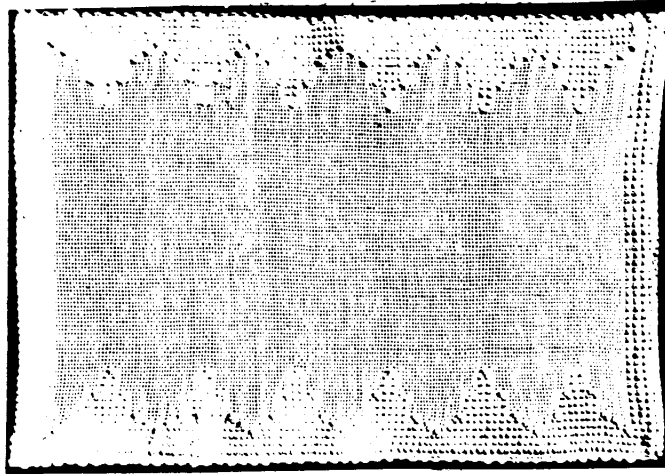


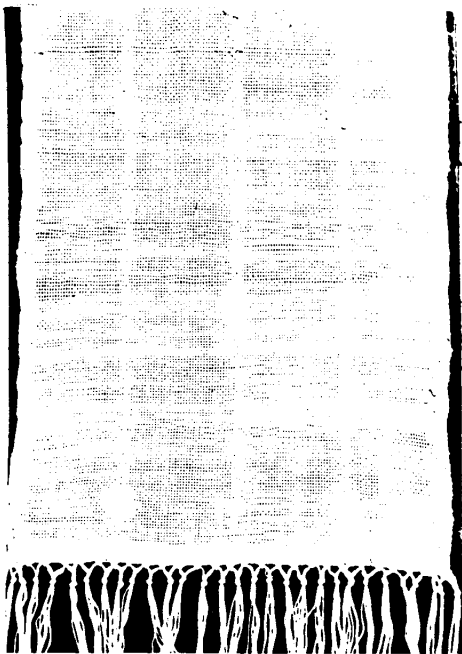
Figure No.1

"Laid-In" Weaving for the Hearthside

Loom.

The pieces described this month were woven on the Hearthside Loom. And all were woven on Maysville Carpet Warp for the warp, with the same for the plain weave between each row of the laid-in pattern thread, which was of Maysville Home-craft Soft Spun Cotton. Many very surprising effects can be gained with these simple inexpensive materials. The curtains on Page 2 were entered in a recent

Figure No.2



competition put on by the Modern Museum of Art, "The Arts in Therapy" and was accepted to become a part of their Exhibits which are touring the country, and to become the property of the Museum. While these curtains are decidedly modern in their effect, they will fit nicely into any type of room.

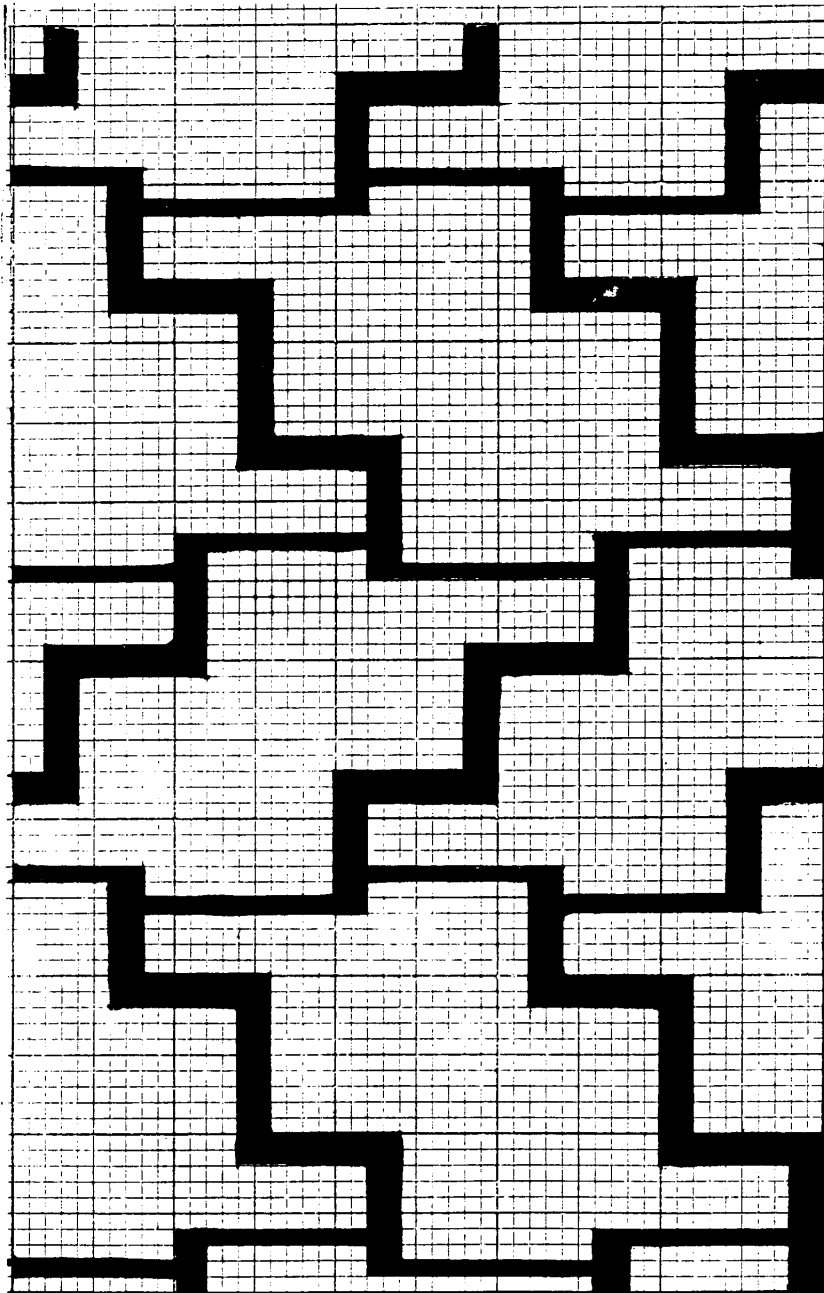
Detail of different types and forms of working "laid-in" technique were given in News for Nov-1941. This is available for 45¢ each. Or an exhibit and lesson on laid-in weaving may be had for \$3.50.

Figure No.1 above is a place mat. Make a warp of carpet warp 120 threads wide. Put two threads in each of the edge slits. This will measure about 12" when woven. Weave about an inch for a hem of plain weave with carpet warp single for weft. Then put in four rows of pale blue Home-craft cotton, with a row of the carpet warp between. Now start a new pattern weft on the right and put it in only 10 threads from this edge. Turn the weft on the left into the same shed, and put a row of carpet warp in the same shed. Then change shed and put in another row of carpet warp. Change shed put in pattern etc. Always put a row of plain weave in shed with the pattern weft, then another row of plain, and so on. The design above should be easy to follow.

Figure No.2. This is a runner made of white carpet warp with beige Home-craft cotton for the lengthwise lines, and small spots of laid-in. Make a warp of 160 threads of carpet warp, and six lengths of the Home-craft cotton. The carpet warp is threaded through a hole and a slit, the Home-craft cotton through a slit, the carpet warp through the hole, then another length of the Home-craft cotton through the next slit. The warp was spaced in the heddle so the heavy cotton stripes were about 4" apart. On the edges of this runner two warp threads were threaded thro 3 slits with a single thread through the eye to give a heavier edge. The small figures were put in with the laid-in technique.

Figure No.3. This curtain was set the full width of the heddle of the Hearthsides

Figure No.3



loom. Make a 12 yard warp of 322 threads of white carpet warp. About 5 spools will be needed. Plain weave weft is light grey carpet warp used single, 2 spools of this are needed. Laid-in pattern was of cream color Home-craft Soft Spun cotton, and three balls are necessary. Thread two threads of warp in a slit and one in a hole for the width of the heddle.

It is very easy to follow the design at the left. 2 squares of the cross section paper are equal to one inch of the warp.

Weave a plain weave heading 4" wide for the hem, then start the design. Measure carefully and place the design where it belongs, starting three separate strands for the laid-in design.

If desired the design can be drawn out in actual size and pinned under the weaving to the heading. But it is not hard to follow the design as given if the measuring is done carefully. One full repeat and about one-half of another is given.

These are very handsome curtains and some of you may be able to see them if the Museum of Modern Art Exhibit comes to your city. Be on the lookout for it. And if you need some good curtains, I am sure you will like these. They are simple, easy and quick to do, and smart enough for any room anywhere.

I shall be glad to hear from any of the Hearthsides loom weavers who use these articles. Let me know how you like them.