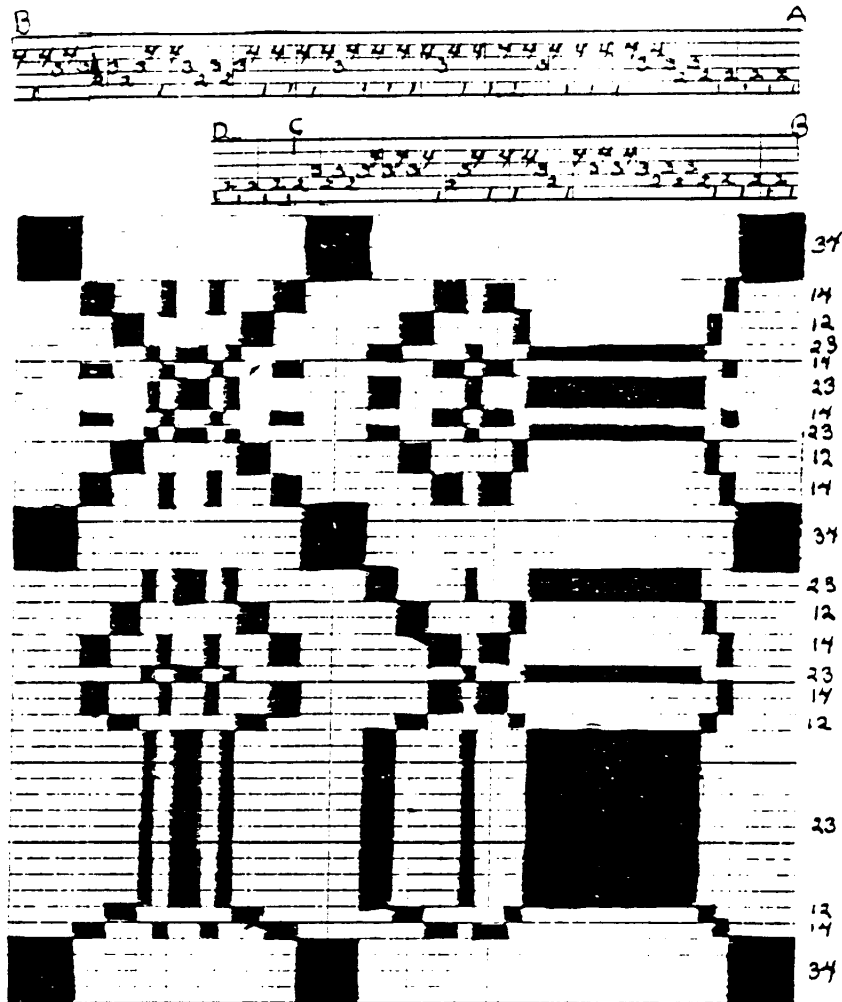


HANDWEAVING NEWS



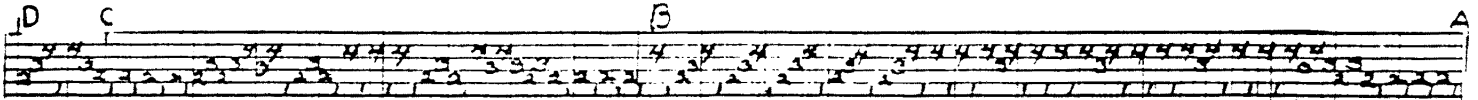
Over-shot Pattern Threadings for Tree Designs from the Speck Book.

A number of requests have come in since the June News went out, asking if it is not possible to use those patterns on the 4 harness loom. It is possible with some adaptations, so here they are. I hope 4 harness weavers will find them useful. There are many interesting ways these threading drafts may be used. They are especially good for many borders for such things as towels, luncheon sets etc. They are all arranged for a warp of 420 threads, and may be woven on No. 20/2 cotton warp set at 30 threads to the inch. In all of the threadings the large square block of 14 units has been broken up by putting one thread on harness 3, with the pattern block on 1&4. This is woven all on 1&4 and gives the effect of a solid block. When weaving, repeat each pattern block enough times to square it. The number of times to use the weft depends on its size and how close one beats down the weft, so note that the numbers at the sides of the key drafts refer to the order of the treading and to the levers of the Structo loom. For a treadle loom, the tie-up would be just reversed. I am sorry the photo of the original design from the Speck book was not better, but I think the patterns given here will be clear.

To arrange the threading draft No. 1 above, thread the border A to B, 66 threads, then B to C repeated 7 times 40 threads, C to D 8 threads. Finish with the left border B to A 66 threads to complete the warp of 420 threads.

There are three different tree designs on Page 3 of the June News. Each of these designs make a different corner and tree, but the center repeat is the same. In writing the threading drafts, there is a slight difference in the center repeats, but the woven effect is about the same if the order on the key draft is followed.

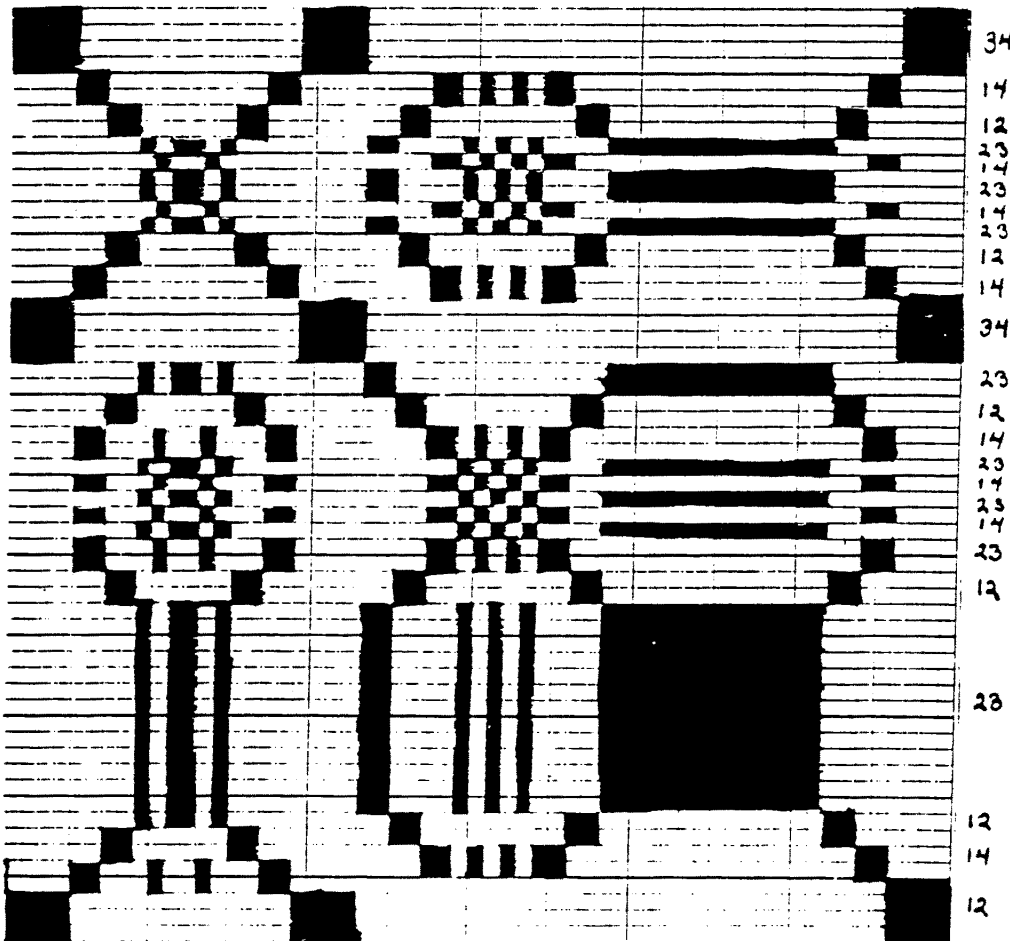
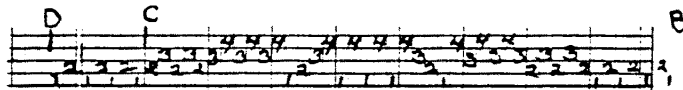
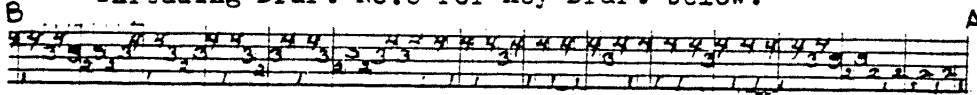
Threading Draft No.2 for Pattern Key Draft Page 3 of June 1943 News.



To arrange this threading for a warp of 420 threads, thread as follows,-
 From A to B for the right hand border, B to D 50 threads repeated 5 times,
 C to B 42 threads, then the left hand border B to A 64 threads.

The order of treadling is as follows,- The numbers refer to the levers of the
 Structo loom, and the number of times to use the weft is not given as it depends
 on the size of weft used, but weave to square each pattern block, and follow the
 key draft design. --- 34,14,12, 23 repeated for the large square. Then 12,14,23,
 repeat this order 5 times for the tops of the trees. The center repeat is 34,14,
 12,23,14,23,14,23,12,14,34, for the large figure. Then 14,12,23,12,14 for the
 small figure. The center may be repeated as far as desired, then the large figure
 and then the trees in reverse for the opposite end of the place mat, runner or
 what ever is being woven. On the other key drafts of the tree design the small
 center is not included, as in this key draft. It may be added to the other drafts
 id desired.

Threading Draft No.3 for Key Draft below.



Thread 1,2,3,4,
 12,3,4, at the
 beginning. Then
 Border A to B
 76 threads.
 B to C 42 threads
 6 times.
 C to D once.
 B to A for left
 border. Then to
 end 4,3. 2,1, 4,
 3,2,1. First and
 last thread is
 threaded double
 to use up the extra
 two warps.