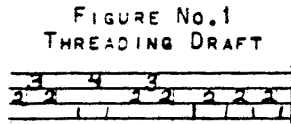
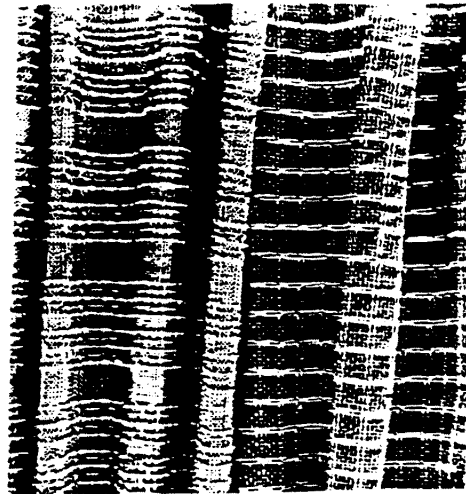
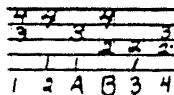


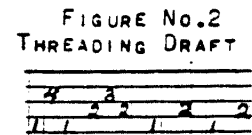
HANDWEAVING NEWS



REGULAR TIE-UP



DRAPERY OR CURTAIN MATERIAL



TIE-UP SAME AS FOR No.1

THIS MONTH WE ARE GIVING SOME DRAPERY MATERIALS WHICH WERE WOVEN IN MY CLASS AT WAYNE UNIVERSITY THIS PAST SPRING. THE THREADING IS SIMPLE AS GIVEN AT FIGURE No.1 THE INTEREST IN THESE FABRICS COMES FROM THE USE OF DIFFERENT MATERIALS, AND FROM THE WAY THE PATTERN IS SLEYED IN THE REED.

DRAPERY MATERIAL No.1 THREADING No.1

WARP;- No.5 MERCERIZED COTTON

SLEY;- 15 DENT REED AS FOLLOWS,- ONE IN A DENT FOR THE FIRST 7 THREADS. SKIP A DENT, 3 IN ONE DENT, SKIP A DENT, 3 IN NEXT DENT, SKIP A DENT, 3 IN A DENT, SKIP A DENT. REPEAT ACROSS FOR THE WIDTH OF THE WARP. END WITH A REPEAT OF THE FIRST 7 THREADS FOR THE LEFT EDGE.

WEFT THREADS;- MERCERIZED COTTON No.5 LIKE THE WARP. PAMPAM COTTON A HEAVY NUB YARN, AND FINE RAYON BRAID.

TREADLING ORDER;- USE TIE-UP AS GIVEN ABOVE 17 SHOTS OF PLAIN WEAVE, A& B, No.5

TREADLE 2- 1&4-ONCE WITH PAMPAM YARN

2 SHOTS PLAIN WEAVE WITH No.5

TREADLE 3- 1&2-ONCE RAYON BRAID

2 SHOTS PLAIN WEAVE WITH No.5

TREADLE 2- 1&4-ONCE PAMPAM YARN

2 SHOTS PLAIN WEAVE WITH No.5

TREADLE 3- 1&2-ONCE RAYON BRAID

2 SHOTS OF PLAIN WEAVE WITH No.5

TREADLE 2- 1&4-ONCE WITH PAMPAM YARN

7 SHOTS PLAIN WEAVE WITH No.5. THEN

WEAVE IN REVERSE ORDER BACK TO BEGIN

NING FOR COMPLETE REPEAT. COLOR MAY

BE USED IN THE WARP IF DESIRED. BUT IT IS

BEST TO KEEP ALL OF THE WEFT WHITE. THIS IS

A VERY ATTRACTIVE HEAVY CURTAIN.

DRAPERY MATERIAL No.2. USE THREADING No.2

WARP; TAN CARPET WARP

SLEY; SLEY ONE, SKIP ONE FOR FIRST 4 THREADS

SLEY 2,3,2, ALL IN ONE DENT, SKIP ONE

DENT. SLEY 1,4,1, IN ONE DENT. USE A 12

DENT REED. REPEAT FOR WIDTH OF LOOM,

ENDING WITH 2,1,2,1, ON LEFT SIDE.

WEFT; THREE DIFFERENT COMBINATIONS OF WEFT

ARE USED TO WEAVE THIS. SO 3 SHUTTLES

ARE WOUND AS FOLLOWS,-SHUTTLE 1 HAS 4

THREADS WOUND AS ONE, JUTE YARN, BEIGE

CARPET WARP, No.20 APPLE GREEN MERCER

IZED COTTON, AND MING GOLD COTTON No.8

No.2 SHUTTLE IS SAME AS No.1, EXCEPT

USE No.20 CORAL COTTON INSTEAD OF THE

APPLE GREEN.

No.3 SHUTTLE ENTERPRISE COTTON CREAM

COLOR, CORAL No.20 MERCERIZED, No.8 MER

CERIZED COTTON WHITE.

TREADLING ORDER;

WITH SHUTTLE No.1 WEAVE 6 SHOTS PLAIN WEAVE.

THEN SHUTTLE No.3,-TREADLE 2 ONCE,

TREADLE 4 ONCE.

REPEAT THIS 4 TIMES.

WITH SHUTTLE No.2 WEAVE 6 SHOTS PLAIN

WEAVE.

WITH SHUTTLE No.3,- TREADLE 2 ONCE,

TREADLE 4 ONCE. THIS IS ONE COMPLETE

REPEAT.

DO NOT BEAT THIS TOO HARD. IT SHOULD

BE RATHER A LOOSE WEAVE. THIS MAKES

A VERY ATTRACTIVE CURTAIN. THERE ARE MANY

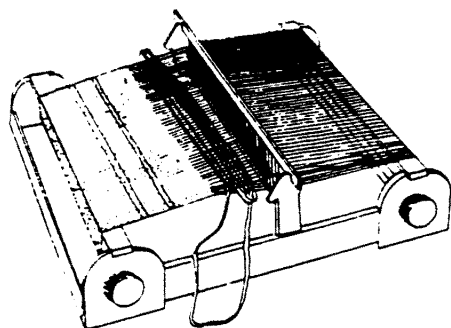
OTHER WAYS TO WEAVE THIS. AND OF COURSE IT

IS POSSIBLE TO USE OTHER WEFT COMBINATIONS

THAN THE ONES SUGGESTED. THIS THREADING IS

AN EXCELLENT ONE FOR EXPERIMENTING.

SUGGESTIONS FOR BABY BLANKET OR CARRIAGE
ROBE FOR THE HEARTH-SIDE PORTABLE
LOOM.



THERE ARE A GOOD MANY WEAVERS SUBSCRIBING TO THE NEWS WHO HAVE THE HEARTH-SIDE PORTABLE LOOM. JUST RECENTLY WE RECEIVED A REQUEST FOR INFORMATION ON THE METHOD OF HOW TO MAKE A BABY BLANKET ON THIS LOOM. SOME OF MY STUDENTS HAVE MADE VERY SUCCESSFUL ONES, SO I AM GOING TO TELL YOU HOW IT CAN BE DONE.

THIS WOULD MAKE A VERY GOOD ARTICLE FOR A SPECIALTY, FOR ANYONE LOOKING FOR SOME ARTICLE TO SELL. FOR IF WELL DONE, THEY ARE A LOVELY GIFT FOR THE NEW BABY, AND ONE THAT THE MOTHER WILL ALWAYS APPRECIATE.

MATERIALS. WOOL IS OF COURSE THE USUAL YARN TO USE. FOR A SUMMER BLANKET, COTTON CAN BE USED, THOUGH IT IS NEVER QUITE AS SOFT AND NICE AS WOOL. THE NEW FALL AND WINTER CATALOG OF SEARS ROEBUCK & CO. HAS SOME EXCELLENT WOOLS DESIGNED ESPECIALLY FOR BABY THINGS.

HEARTH-SIDE "BABY SOFT" WOOL YARN IS A THREE PLY 100% VIRGIN WOOL THAT IS SOFT, LIGHT, AND FLEECY. CONSULT CATALOG FOR COST.

HEARTH-SIDE BABY "POMPADOUR" IS A 2 PLY YARN, 76% WOOL, 24% RAYON. THE RAYON THREAD GIVES THIS YARN A LOVELY LUSTER. BOTH OF THESE YARNS ARE MOTHPROOFED. THEY ARE PUT UP IN 1 OUNCE BALLS OF WHITE, AND BABY BLUE AND BABY PINK.

HEARTH-SIDE SPORTS YARN IS A VERY USEFUL 4 PLY YARN. THIS COMES IN TWO OUNCE BALLS. AND HEARTH-SIDE FLOSS TWIST WOOL YARN IS A 2 PLY YARN. BOTH OF THESE YARNS COME IN A LARGE ASSORTMENT OF COLORS AS WELL AS THE BABY COLORS. EITHER OF THESE WOULD BE GOOD FOR SCARVES TOO. FOR A NECK SCARF, 10 TO 12 INCHES WIDE, FIVE OUNCES WILL MAKE TWO SCARVES.
FOR A BABY BLANKET, YOU WILL NEED ABOUT 8 OZ FOR ONE BLANKET, SEVEN OUNCES OF WHITE AND ONE OUNCE OF COLOR.

WARP 214 THREADS OF BABY SOFT YARN $1\frac{1}{2}$ YDS LONG FOR ONE BLANKET TO FINISH ABOUT 36" LONG. TAKE GREAT CARE NOT TO STRETCH WARP AS YOU ARE PUTTING IT ON THE WARPING FRAME. PUT IT ON VERY LOOSELY.

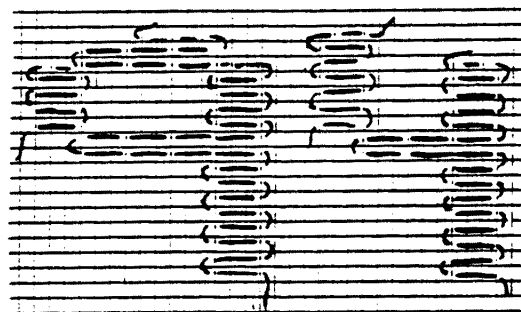
WARPING ORDER. 16 PINK, 3 WHITE, 4 PINK, 158 WHITE, 4 PINK, 3 WHITE, 16 PINK.

THREAD THE HEDDLE IN SAME ORDER. WIND WARP ON WARP BEAM. PUT IN PLENTY OF LEACH STICKS WHEN DOING THIS. KEEP WARP AT EVEN TENSION. TIE WARP TO CLOTH BEAM AND YOU ARE READY TO BEGIN.

WEFT MUST BE BEATEN VERY LIGHTLY. JUST BRING THE HEDDLE UP TO THE PREVIOUS ROW EACH TIME. WEAVE ABOUT 14 SHOTS OF PINK, OR ENOUGH TO ABOUT EQUAL THE EDGE WIDTH OF COLOR. THEN 8 SHOTS OF WHITE, AND 4 SHOTS OF PINK AGAIN. WEAVE REST OF BLANKET ALL IN WHITE UNTIL THE OTHER END IS REACHED. THEN REPEAT THE BORDER IN REVERSE.

BROCADING. IT IS EASY TO BROCADE IN INITIALS OR NUMBERS. A CUTE TRICK IS TO BROCADE THE YEAR 1947, AS DESIGNED BELOW. THIS CAN BE PUT IN THE CENTER OF THE BLANKET OR IN ONE CORNER. THE DESIGN FINISHED WILL BE ABOUT 2" HIGH AND $4\frac{1}{2}$ " LONG. IT MAKES A NEATER APPEARANCE ON THE BACK TO MAKE EACH NUMBER WITH A SEPARATE WEFT THREAD. TWO SHOTS OF PATTERN WEFT WITH A SHOT OF PLAIN WEAVE BETWEEN, EQUAL 1 SQUARE ON THE CROSS SECTION PAPER DESIGN. THE 9 IS ENLARGED TO SHOW THE DETAIL OF HOW THE WEFT GOES. OVER TWO THREADS ON TOP OF THE WARP AND UNDER ONE WARP FOR EACH SQUARE TOO. IF THE FIGURES APPEAR TOO SQUATTY, PUT THREE WEFT THREADS IN INSTEAD OF JUST TWO.

DETAIL OF THE 4 AND THE 9 OF 1947 BELOW. USE A DOUBLE WEFT THREAD FOR THE FIGURES.



PLAN OF THE BLANKET WITH COLORED BORDERS AND FIGURES PLACED IN ONE CORNER.

