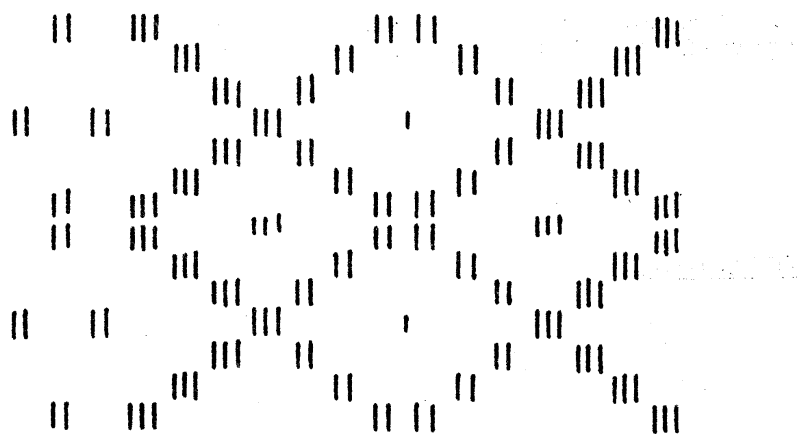


"LOOMCRAFT"

PATTERN PAMPHLET N° 1



WINDSOR BRAID

LOOMCRAFT CANTERBURY ENGLAND

SELECTED YARNS
TO SUIT ALL
LOOMCRAFT PATTERNS
AVAILABLE FOR
IMMEDIATE DESPATCH
FROM:-

CATHEDRAL WEAVING CENTRE,
8, PALACE STREET,
CANTERBURY.

THE WINDSOR BRAID.

This pattern is very suitable for Altar Frontals and Priests Vestments.

Sett at 28 e.p.i.

12/2's Mercerised Cotton or Similar Grist of Silk for the warp and binder.

The weft can be a thicker silk or Rayon Crepe Twist.

One complete pattern plus two selvages will give approximate width of 3½".

LIFT SEQUENCES.

<u>Shafts.</u>	<u>Pedals.</u>	<u>Times.</u>	<u>Shafts.</u>	<u>Pedals.</u>	<u>Times.</u>
3 - 2	2	8	1 - 4	6	4
2 - 1	1	8	3 - 4	5	8
1 - 4	6	8	1 - 4	6	8
4 - 3	5	8	2 - 1	1	8
1 - 4	6	4	3 - 2	2	8
1 - 2	1	4			
2 - 3	2	4	3 - 4	5	4)
3 - 4	5	2	3 - 2	2	4) 4
2 - 3	2	4			times.
1 - 2	1	4	3 - 4	5	4

Contd....

THREADING.

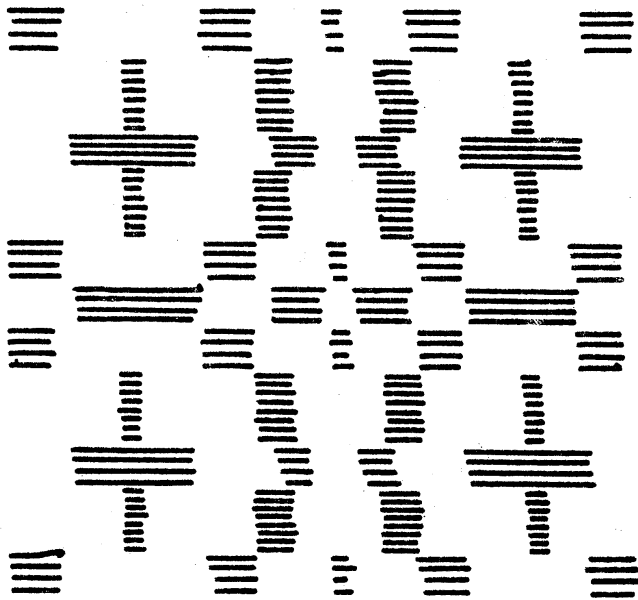
4		4 4 4 4 4 4 4 4 4 4	4	4 4 4 4 4 4 4 4 4 4	4
3	3 3 3 3	3 3 3 3	3 3 3 3 3 3	3 3 3 3	3 3 3 3
2	2 2 2 2 2 2 2 2		2 2 2 2 2 2 2 2		2 2 2 2 2 2 2 2
1	1 1 1 1 1 1 1 1	1 1 1 1	1 1 1 1	1 1 1 1 1 1 1 1	1
3 times. (12)		<u>Pattern.</u>	91 ends.		3 times. (12)

Standard tie-up.
Binder throughout.

LOOMCRAFT

PATTERN PAMPHLET

Nº 2



GOLDEN CROSS.

LOOMCRAFT CANTERBURY ENGLAND.

SELECTED YARNS
TO SUIT ALL
LOOMCRAFT PATTERNS
AVAILABLE FOR
IMMEDIATE DESPATCH
FROM:-

CATHEDRAL WEAVING CENTRE,
8, PALACE STREET,
CANTERBURY.

THE GOLDEN CROSS. Pattern fabric very suitable for Ecclesiastical work.

Sett at 28 e.p.i. (a 14 dent reed double sleyed)

12/2's Mercerised unbleached cotton for warp & binder thread.

6/2's Mercerised cotton or Rayon Crepe Twist in colour for pattern.

Single threading through healds throughout.

Each full repeat needs 64 ends, start and end with Border section which takes 23 ends. Allow 8 ends for selvedge at either side.

A binder pick MUST follow each pattern row. The binder lifts are 1 & 3, 2 & 4 alternately.

Make the cloth firm by beating well.

Lift Sequence.

<u>Pedals.</u>	<u>Shafts.</u>	<u>Times.</u>	
1	1 - 2	4)
5	3 - 4	8)
2	2 - 3	8)
1	1 - 2	4)
2	2 - 3	8)
5	3 - 4	8)

Repeat for length required.

```

          4 4 44 4 4
        3 3 33333 33333 3 3
      2 2 2 2 2 2 2 2 2 2 2 2 2 2
    1 1 1 1 1 1 1 1 1 1 1
  
```

Cross. 41 ends.

```

    4 4 4 4 4 4 4 4 4 4
      3 3 3 3 3 3 3 3 3 3
        2 2 2 2 2 2 2 2 2 2
          1 1 1 1 1 1 1 1 1 1
  
```

Border. 23 ends.

Selvedge.
8 ends.

Shafts.

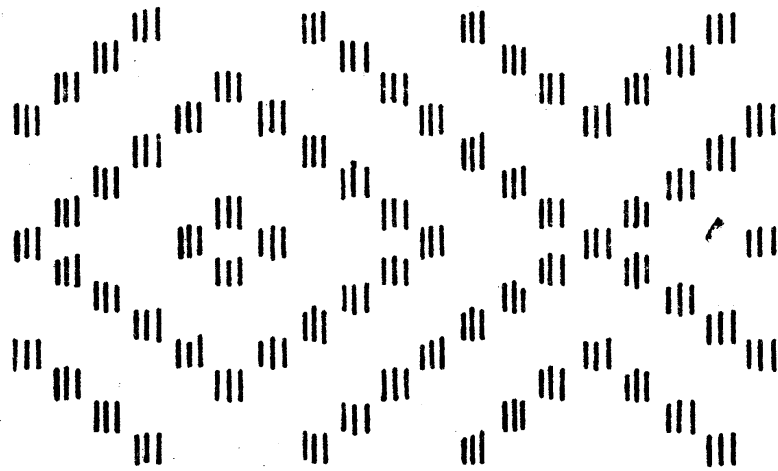
5. Finish by threading Border once more to balance draft and then second selvedge in reverse. (i.e. 1, 2, 3, 4, 1, 2, 3, 4.)

With a firm beat materials required are:-

- $\frac{1}{2}$ lb. 12/2's Mercerised Cotton.
- $\frac{3}{4}$ lb. Rayon Crepe Twist.

LOOMCRAFT

PATTERN PAMPHLET N° 3.



ST ANDREWS BRAID.

LOOMCRAFT CANTERBURY ENGLAND.

SELECTED YARNS
TO SUIT ALL
LOOMCRAFT PATTERNS
AVAILABLE FOR
IMMEDIATE DESPATCH
FROM:-

CATHEDRAL WEAVING CENTRE,
8, PALACE STREET,
CANTERBURY.

ST ANDREWS BRAID.

This pattern is very suitable for Ecclesiastical work and also can be used for Book Markers.

Sett at 28 e.p.i.

12/2's Mercerised Cotton or a similar Grist of Silk is used for the warp and binder thread.

The weft thread is according to your needs, either 6/2's Mercerised Cotton, Rayon Yarn, Gimp or Medium Slubs. All are very suitable.

One pattern draft, plus two selvages will give an approximate width of 2 1/4".

LIFT SEQUENCES.

<u>Shafts.</u>	<u>Pedals.</u>	<u>Times.</u>	<u>Shafts.</u>	<u>Pedals.</u>	<u>Times.</u>
1 - 2	1	4	1 - 4	6	4
2 - 3	2	4	3 - 4	5	4
3 - 4	5	4	2 - 3	2	4
1 - 4	6	4	1 - 2	1	4
1 - 2	1	4	1 - 4	6	4
2 - 3	2	4	3 - 4	5	4
3 - 4	5	4	2 - 3	2	4
1 - 4	6	4			
1 - 2	1	4			
2 - 3	2	4			
1 - 2	1	4			

Repeat from beginning for length required.

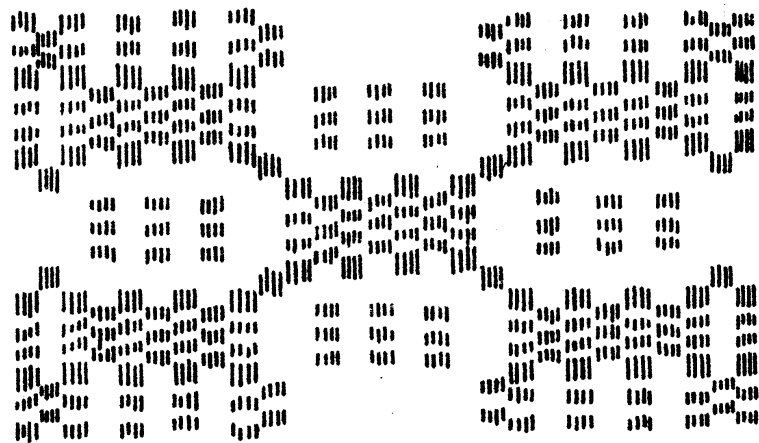
THREADING.

4 4	4 4 4	4 4 4	4 4 4	4 4 4	4 4	4
3 3	3 3	3 3 3	3 3	3 3 3	3 3	3
2 2	2 2 2	2 2 2	2 2 2 2	2 2 2	2 2	2
1 1	1 1 1	1 1 1	1 1 1	1 1 1	1 1	1
<u>Selvage</u>	<u>Pattern</u>	47 ends.		<u>Selvage</u>	<u>Shafts.</u>	
8 ends.				8 ends.		

Standard tie-up.
Binder thread throughout.

"LOOMCRAFT"

PATTERN PAMPHLET N^o 4



SELECTED YARNS
TO SUIT ALL
LOOMCRAFT PATTERNS
AVAILABLE FOR
IMMEDIATE DESPATCH
FROM:-

CATHEDRAL WEAVING CENTRE,
8, PALACE STREET,
CANTERBURY.

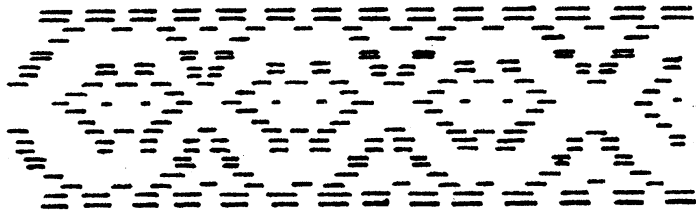
BLOCKS AND SQUARES' CUSHION COVER

LOOMCRAFT CANTERBURY ENGLAND.

"LOOMCRAFT"

PATTERN PAMPHLET

N° 6



'PETALS' - LINEN GUEST TOWELS.

SELECTED YARNS
TO SUIT ALL
LOOMCRAFT PATTERNS
AVAILABLE FOR
IMMEDIATE DESPATCH
FROM:-

CATHEDRAL WEAVING CENTRE,
8, PALACE STREET,
CANTERBURY.

LOOMCRAFT CANTERBURY ENGLAND

PETALS.

This pattern is most suitable for towels.

Single sley through 14 dent reed.
Single threading through healds.

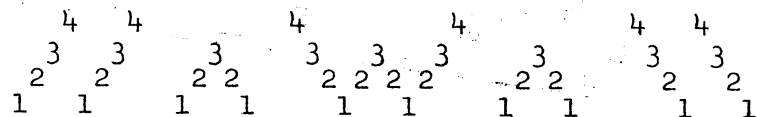
Warp 309 ends. 2½ yards to produce two towels.

Double sley first and last 4 ends, rest single.
Tabby throughout pattern with 12/2's mercerised cotton.

Use 12/2's Unbleached mercerised cotton for warp and
8/3's mercerised linen for weft.

Standard tie-up. Binder throughout.

THREADING.



<u>Selvedge.</u> 5 ends.	16 x 18 times.	<u>Selvedge.</u> 8 ends.	<u>Shafts.</u>
8 ends.	(once) 288 ends.		

First Selvedge...	8
16 x 18 times....	288
Link.....	5
Last Selvedge....	8

309 Ends.

LIFT SEQUENCES. 1st. Towel.

<u>Shafts.</u>	<u>Pedals.</u>	<u>Times.</u>	<u>Shafts.</u>	<u>Pedals.</u>	<u>Times.</u>
3 - 4	5	1	4 - 1	6	1
2 - 3	2	1	1 - 2	1	1
1 - 2	1	1	2 - 3	2	1
4 - 1	6	1	1 - 2	1	1
1 - 2	1	1	4 - 1	6	1
2 - 3	2	1			
1 - 2	1	1			
4 - 1	6	1			
1 - 2	1	1			
2 - 3	2	1			
3 - 4	5	1			

Repeat throughout.

Begin & end each towel
with 3¼" plain weave in
Yellow linen for hem.
27" of pattern between
hems.

Contd...

LIFT SEQUENCES. 2nd. Towel.

<u>Shafts.</u>	<u>Pedals.</u>	<u>Times.</u>	<u>Shafts.</u>	<u>Pedals.</u>	<u>Times.</u>
3 - 4	5	2)	4 - 1	6	1)
2 - 3	2	2)	1 - 2	1	1)
1 - 2	1	1)Yellow	2 - 3	2	1)Yellow.
4 - 1	6	1)	1 - 2	1	1)
			4 - 1	6	1)
3 - 4	5	2 Brown.			
4 - 1	6	1)			
1 - 2	1	1)Yellow			
2 - 3	2	2)			
3 - 4	5	2)			

Repeat throughout.

Contd....