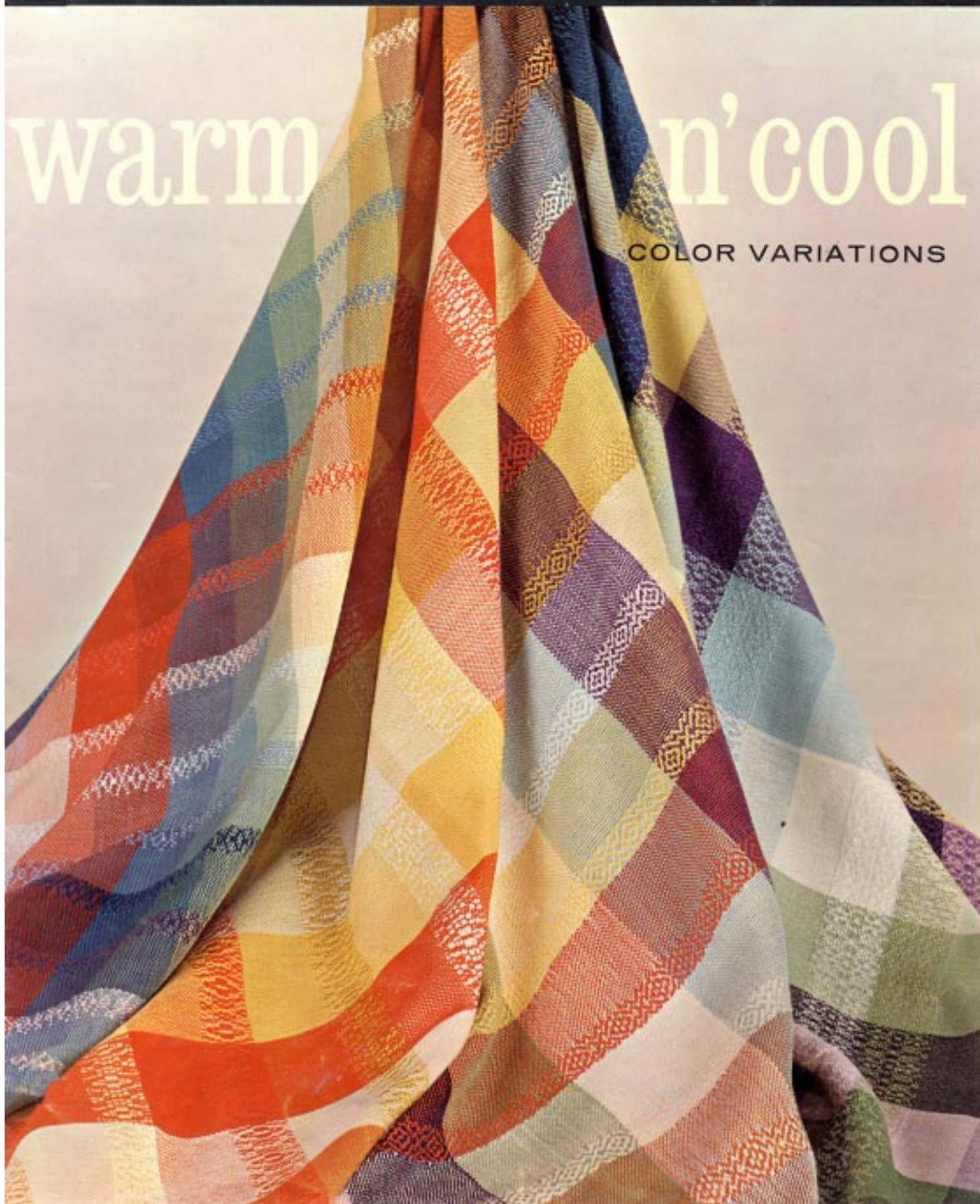


# PRACTICAL WEAVING SUGGESTIONS

VOL. 1-63

## warm n' cool

COLOR VARIATIONS



# Color Projects

by Margaret (Betty) Meinzer

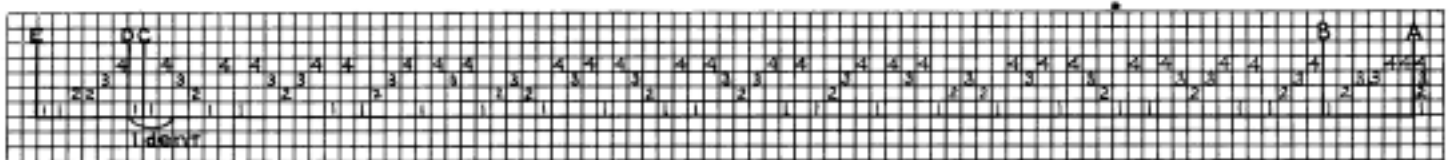
For several years I wove in the Art Building at the California State Fair, and also worked in a weaving studio. People over the years have had a great deal of trouble with color and need help as to its use. I noticed that the use of color stimulated interest in weaving. The changes that took place when one color crossed another, was ever a source of surprise and interest. The idea of doing color projects with the accent on use and beauty, seemed a good way to interest and help people. What better place to do this but at the State Fair!

First, a warp using only cool colors was planned. Second warp using only warm colors was followed by a warp using a combination of cool and warm colors. A change in the density of the color takes place when a pattern is treadled, therefore thought it best to do both plain and pattern weaving. An original draft was used for the first four projects. Needing a variety of color as well as excellent quality yarns, only

Lily yarns were used. The three warps were all put on the loom, one being tied to the other. The results were most gratifying. As soon as one warp was woven, it was cut off the loom and placed on display for the public to see. It was amazing the number of people that repeatedly returned to see what had been woven.

In addition to color gamps, many practical uses came to mind. Yardage for cafe type curtains or drapery material to be used in a child's room, den, family room or kitchen; a bedspread, patio tablecloth, aprons, skirts, etc., could all be made on the same warps.

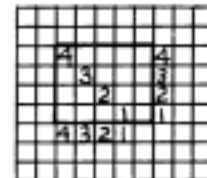
I have not given yarn yardage needed as this would depend on what each person wanted to weave in addition to their color gamp. Each of the first three color gamps produce 121 color combinations, and the fourth one, 324 combinations. Crossing each warp with additional colors, would give more color combinations.



## Threading Plan:

Thread from right to left.  
 A to B, 1x for Right Selvage  
 B to D, 10x  
 B to C, 1x  
 D to E, 1x for Left Selvage  
 A total of 880 ends to be warped.

Tie-up



# COLOR GAMP No. 1

*(Illustrated on front cover at right)*

## Cool Colors, Warp and Weft

**Warp:** Lily Art. 114, Mercerized Pearl Cotton, Size 10, in colors listed below.

**Weft:** Pattern, Lily Art. 114, Mercerized Pearl Cotton, Size 3, same 11 colors as the warp. Tabby, same as warp.

**Reed:** 12 dent sleyed two per dent except when color change is made — then three threads are sleyed in one dent. Thread from right to left.

Warp the following 11 colors in the order given. Warp 85 ends for the first stripe, and 84 ends for the last stripe, as selvage threads are included in these. Warp 79 ends for all of the other stripes.

- (1) 441 Black
- (2) 1455 Peacock
- (3) 1462 Chartreuse
- (4) 407 Violet
- (5) 475 Aqua
- (6) 984 White
- (7) 536 Pistache
- (8) 637 Purple Navy
- (9) 408 Lavender
- (10) 429 Emerald
- (11) 562 Bottle Green

**Weaving:** Use color sequence given for the warp, weaving one repeat of pattern and then weave tabby to square block plus two tabby shots. Use tabby between pattern shots.

Pattern—Treadle, 3, 4  
1, 4  
1, 2  
2, 3-2x  
1, 2-2x  
2, 3  
3, 4  
1, 4-2x (Center)  
3, 4  
2, 3  
1, 2-2x  
2, 3-2x  
1, 2  
1, 4  
3, 4

## COLOR GAMP No. 2

*(Illustrated on front cover second from right)*

### Warm Color Weft on Cool Color Warp

**Warp:** Same as in Color Gamp No. 1.

**Weft:** Pattern area and tabby area, Lily Art. 114, Mercerized Pearl Cotton, Size 3, using the 11 warm colors listed for the warp of the third Color Gamp.

**Weaving:** Pattern—Treadle, 1, 2  
2, 3  
3, 4  
1, 4  
1, 2  
2, 3  
3, 4  
1, 4  
3, 4  
2, 3  
1, 2  
1, 4  
3, 4  
2, 3  
1, 2

Weave one repeat of pattern, then weave tabby area to complete the squaring of each color block, plus two tabby shots.

## COLOR GAMP No. 3

*(Illustrated on front cover second from left)*

### Warm Colors, Warp and Weft

**Warp:** Lily Art. 114, Mercerized Pearl Cotton, Size 10.

**Weft:** Pattern, Lily Art. 114, Mercerized Pearl Cotton, Size 3, same 11 colors as warp. Tabby, same as warp.

Warp the following 11 colors in the order given. Warp 85 ends for the first stripe and 84 ends for the last stripe as the selvage threads are included in these. Warp 79 ends for each of the other stripes. Tie warp to Color Gamp No. 1 warp

- |                        |                       |
|------------------------|-----------------------|
| (1) 654 Mahogany       | (7) 404 Yellow        |
| (2) 402 Orange         | (8) 440 Scarlet       |
| (3) 406 Light Yellow   | (9) 85 Peach          |
| (4) 773 Pimento        | (10) 1261 Dark Orange |
| (5) 1459 Canary Yellow | (11) 1260 Rust        |
| (6) 862 Natural        |                       |

**Weaving:** Use color sequence given for the warp. Weave one repeat of the pattern, then weave tabby to square block, plus two tabby shots. Use tabby between pattern shots.

Pattern—Treadle, 3, 4-2x  
1, 4-2x  
1, 2-2x  
2, 3-4x  
1, 2-2x  
1, 4-2x  
3, 4-2x

## COLOR GAMP No. 4

*(Illustrated on front cover at left)*

### Combination of Cool and Warm Colors

**Warp:** Lily Art. 114, Mercerized Pearl Cotton, Size 10, colors listed below.

**Weft:** Pattern, Lily Art. 114, Mercerized Pearl Cotton, Size 3, same 18 colors as warp. Tabby, same as warp.

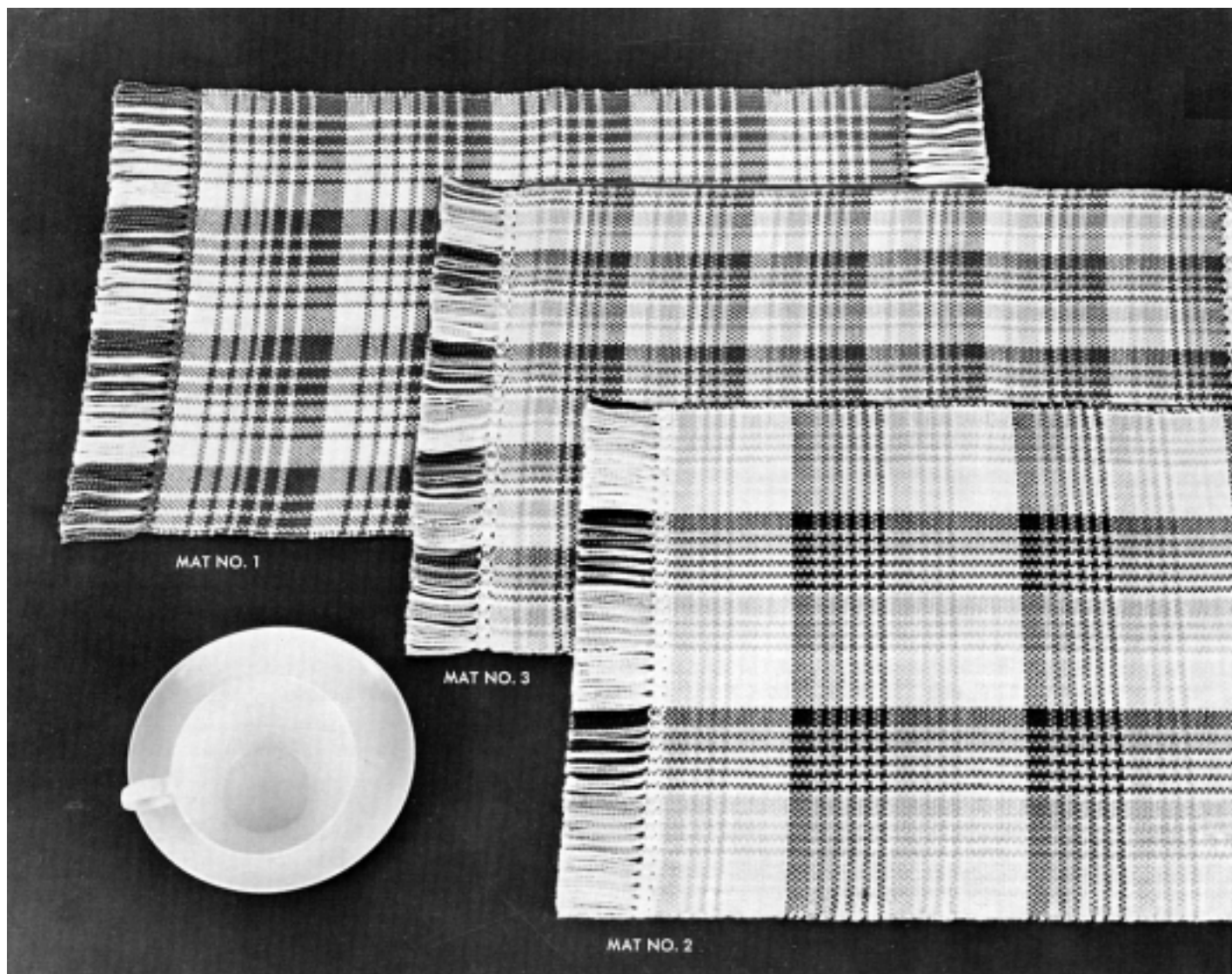
Warp the following 18 colors in the order given. Warp 54 ends for each edge stripe, as selvage threads are included in these. Warp 48 ends for each of the other stripes.

- |                      |                       |                        |
|----------------------|-----------------------|------------------------|
| (1) 1211 Brown       | (7) 444 Deep Red      | (13) 407 Violet        |
| (2) 79 Old Gold      | (8) 440 Scarlet       | (14) 408 Lavender      |
| (3) 406 Light Yellow | (9) 908 Salmon Rose   | (15) 1019 Pink         |
| (4) 536 Pistache     | (10) 952 Light Blue   | (16) 1458 Crab Apple   |
| (5) 501 Jade         | (11) 993 Medium Blue  | (17) 1457 Burnt Orange |
| (6) 476 Turquoise    | (12) 920 Skipper Blue | (18) 1260 Rust         |

Note: Before this warp is tied to Color Gamp No. 3 warp, the extra thread in the reed dent where there are three ends, must be discarded.

**Weaving:** Use color sequence given for the warp. Weave one repeat of the pattern, then weave tabby to square block, plus two tabby shots. Use tabby between pattern shots.

Pattern—Treadle, 3, 4  
1, 4  
1, 2  
2, 3-2x  
1, 2  
1, 4  
3, 4



## PLACE MATS

Working with so many beautiful colors gave me other ideas, one being to design interesting plaids using a limited number of colors. Patio mats seemed the answer for something useful. The first plaid I designed used only two colors, second plaid three colors, and the third one, four colors.

Allowance was made for fringe on each mat. This varied from  $1\frac{1}{2}$  to 2 inches long, for each end. Mats were finished by hemstitching each end on the loom. (Excellent directions for hemstitching on the loom are given in Vol. 2-59 of Practical Weaving Suggestions.)

Threading for all the mats is straight twill — 1, 2, 3, 4 and repeated. Use a 12 dent reed, one thread per dent.

Single tie-up was used. All mats were woven tabby.

## **MAT No. 1 Two Color Plaid**

**Warp and Weft:** Lily Art. 114, Mercerized Pearl Cotton, Size 3, colors 920 Skipper Blue and 984 White.

**Warping Sequence and number of threads to be warped:**

- |                     |                     |
|---------------------|---------------------|
| (1) 10 Skipper Blue | (7) 2 Skipper Blue  |
| (2) 2 White         | (8) 4 White         |
| (3) 4 Skipper Blue  | (9) 2 Skipper Blue  |
| (4) 2 White         | (10) 4 White        |
| (5) 4 Skipper Blue  | (11) 2 Skipper Blue |
| (6) 2 White         | (12) 10 White       |

For the warp, repeat three times plus the first seven groups of threads. Warp one more thread for each outside edge, making a total of 172 threads warped. Double sley the two outside threads on each edge, thru the same dent and heddle.

To weave, I wove four shots of Skipper Blue at each end of mat to use for the hemstitching. The sequences used in warping was followed in wefting the mats, and was repeated the desired number of times to give length of mat wanted.

## **MAT No. 2 Three Color Plaid**

**Warp and Weft:** Lily Art. 114, Mercerized Pearl Cotton, Size 3, colors 562 Bottle Green, 1457 Burnt Orange and 406 Light Yellow.

**Warping Sequence and number of threads to be warped:**

- |                    |                     |
|--------------------|---------------------|
| (1) 6 Light Yellow | (7) 2 Light Yellow  |
| (2) 2 Burnt Orange | (8) 2 Bottle Green  |
| (3) 2 Light Yellow | (9) 2 Burnt Orange  |
| (4) 6 Burnt Orange | (10) 2 Bottle Green |
| (5) 2 Light Yellow | (11) 2 Burnt Orange |
| (6) 2 Bottle Green | (12) 6 Bottle Green |

For the warp, repeat four times plus the first nine groups of threads. Warp one more thread for each outside edge, making a total of 172 threads warped. Double sley the two outside threads on each edge, thru the same dent and heddle.

To weave, I wove five shots of Light Yellow at each end of mat to use for the hemstitching. The sequence used in warping was followed in wefting the mats. This was repeated the desired number of times to weave length of mat wanted.

## **MAT No. 3** Four Color Plaid

**Warp and Weft:** Lily Art. 114, Mercerized Pearl Cotton, Size 3, colors 441 Black, 501 Jade, 908 Salmon Rose, and 984 White.

**Warping Sequence and number of threads to be warped:**

|                   |                    |                    |
|-------------------|--------------------|--------------------|
| (1) 6 White*      | (9) 2 Salmon Rose  | (17) 2 Salmon Rose |
| (2) 2 Salmon Rose | (10) 2 Jade        | (18) 2 Black       |
| (3) 2 White       | (11) 2 Salmon Rose | (19) 2 Salmon Rose |
| (4) 6 Salmon Rose | (12) 6 Jade        | (20) 2 Black       |
| (5) 2 White       | (13) 2 White       | (21) 2 Jade        |
| (6) 2 Jade        | (14) 2 Black       | (22) 2 Black       |
| (7) 2 White       | (15) 2 White       | (23) 2 Jade        |
| (8) 2 Jade        | (16) 2 Black       | (24) 6 Black       |

\*Note: Warp eight white threads instead of six, the first time **only**.

Repeat twice plus first 14 groups of threads, for the warp. Warp one more thread for each outside edge, making a total of 172 threads warped. Double sley the two outside threads on each edge, thru the same dent and heddle.

To weave, I wove four shots of white at each end of mat to be used for the hem-stitching. The sequence used in warping was followed in wefting the mats. This was repeated the desired number of times to weave the length of mat wanted.

**Comments:** By using a finer warp yarn, the size of the plaids could be varied. Clothing yardage and other articles could be woven. Linen or wool yarns could be used. Other color combinations could be substituted. By wefting with a neutral color, a pleasing stripe could be woven.

Much can be learned about color by observing what happens when one color crosses another.

A jack loom was used on all the color projects.

---

*Order Your Hand Weaving  
Supplies From The  
Hand Weavers Headquarters*

**LILY MILLS COMPANY, Shelby, N. C.**