

practical weaving suggestions

VOL. 1-65



EXPERIMENTING WITH COLOR

Colonel John S. Fishback

The new Lily Novelty Yarn, Art. 3343, is unusual in construction as it is made of two quite different materials; jute which is a natural fiber and rayon which is man made. This combination has given us a novelty yarn of interesting irregular texture, and a blending in each color as the jute and rayon fibers do not take the dye in the same way.

While experimenting with this yarn on the loom one project suggested another. There seemed to be so many possible uses, and the blending of these soft colors became so interesting, that the idea of doing one or two rather standard items for this "Practical Weaving Suggestions" was discarded.

Instead it was decided to offer what we hope will be a timesaving and practical weaving suggestion for weavers interested in working out upholstery material, draperies, wall hangings, place mats, or any other projects with this versatile novelty yarn. This piece might be called a color blanket, sampler or wall hanging (shown in color on cover). It was woven to show each of the fine colors in Art. 3343 when crossed by itself and all the others in both plain weave and pattern. Then to show these colors when combined with natural 10/2 cotton, a stripe of this yarn was put on each side of the colored warp, and a heading was woven with the 10/2 at top and bottom.

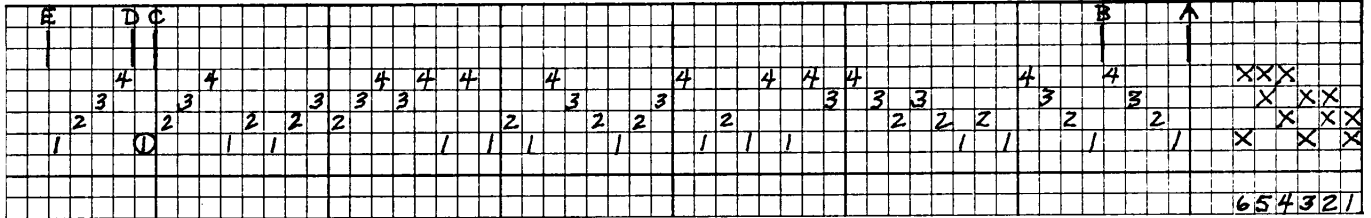
The entire warp was threaded to a modification of Maltese Cross with an intentional flat between colors. The sleying was 2 ends to the dent in a No. 12 reed and although the novelty yarn had a tendency to stick together, as homespun wool often does, a light double beat would clear the shed. When the pattern sections were woven the natural 10/2 cotton was used for tabby.

As you examine the picture of this color blanket, with perhaps an Art. 3343 sample card at hand, consider these notes. The first block in the lower right corner is made with the 10/2 cotton, both warp and weft. To the left of this block across the bottom the 10/2 cotton yarn blends with all of the colored warp stripes. Starting again at the lower right corner and following the natural border to the top you will see how each color in Art. 3343 blends as weft on the 10/2 natural warp. Beginning again at the lower right corner a diagonal line to the upper left corner will pass through the samples in which warp and weft are the same color. To the right and left from these one color blocks you can see what that weft color does to all the other warp stripes. Up and down from the solid color block will be found the result of crossing this one warp color with all the other weft colors.

It is interesting to note there are two samples of each blended color, and often they are quite different. For instance black warp crossed with red weft does not always give the same tone as red warp crossed with black weft. This is true because we handweavers do not weave a perfect 50-50 material as the power loom does. They have a controlled beat that strikes the web at the same angle each time, and a warp that advances the width of the pick after each beat. Much of the charm of handweaving would be lost if we did such perfect weaving so we recognize the variations in warp and weft crimp, and sometimes use them intentionally. If we have a slightly loose warp and normal sett the warp color will predominate because of an almost unnoticed increased crimp. On the other hand if we are weaving with a tighter warp and a little more open sleying the weft will predominate as it has crimped more than the warp.

As an example of how this fact may be used to advantage let us assume that upholstery material is being planned in two colors. Make a short narrow sample warp, half in one color and half in the other. Then weave with both colors trying different warp tensions, and perhaps slewing.

We hope this color blanket and the discussion of Art. 3343 Novelty Yarn will be of help to those of you who plan to try one or more of the projects for which this yarn is so suitable.



Since the plan for this issue was started several fine placemats, combining the new Novelty Yarn Lily Art. 3343, with Lily Linen Warp and Weft Yarns, have been received from Mrs. Geraldine Wood. For your information, the drafts, weaving instructions and photographs of her mats are included in this bulletin.

PLACE MATS

Geraldine Wood

PLACE MAT NO. 1

MATERIALS:

Warp: Lily Art. 107, Linen warp yarn,
size 10/2, White

Weft: Lily Art. 3343, Rayon-Jute
Novelty yarn, Natural

Weave: Tabby and Twill

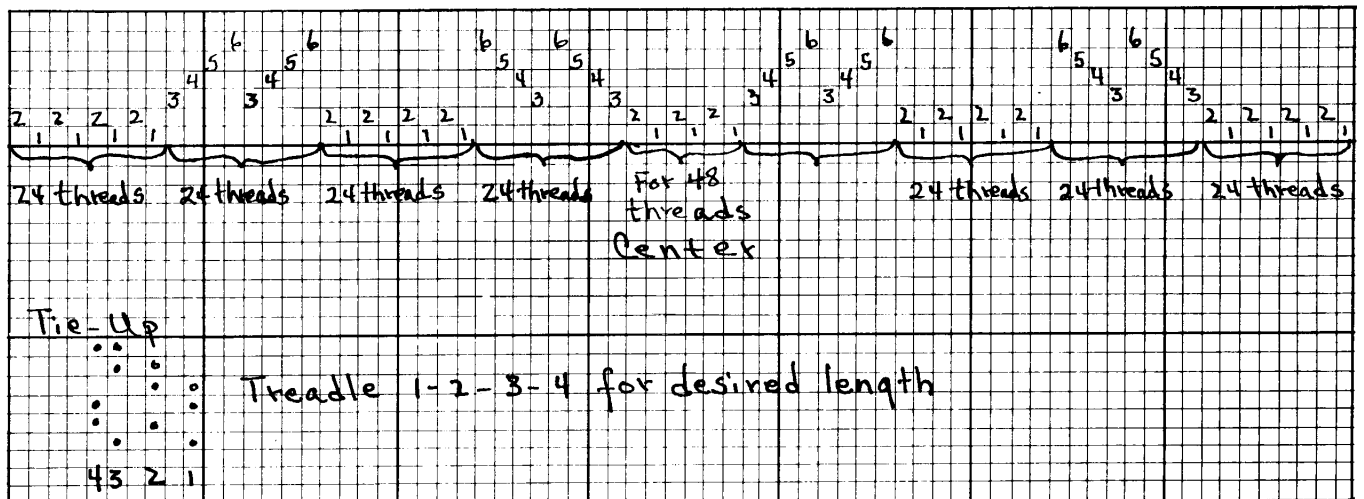
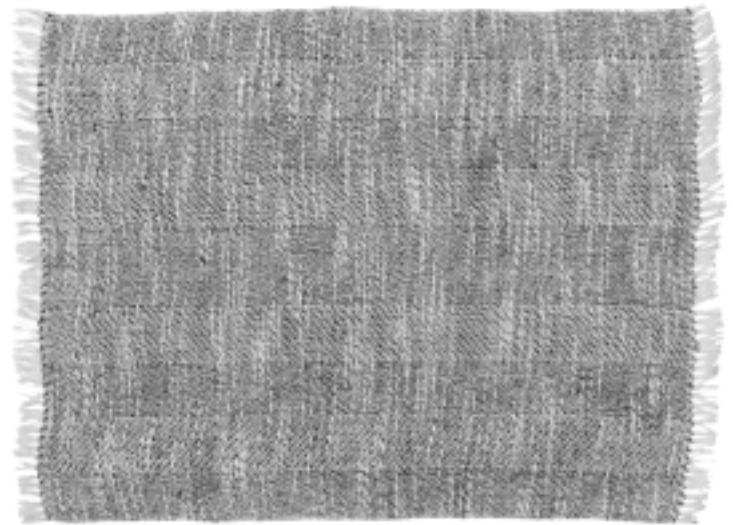
Dents In Reed: 15

Ends Per Dent: 1

Total Warp Ends: 240

Width In Reed: 16 inches

The ends are finished by hemstitching
on the loom — 4 threads to a group,
using the warp thread.



PLACE MAT NO. 2

MATERIALS:

Warp: Lily Art. 3343,
Rayon-Jute Novelty yarn,
Lt. Green and Dk. Green

Weft: Same

Weave: Tabby

Dents In Reed: 16

Ends Per Dent: 1

Total Warp Ends: 256

Width In Reed: 16 inches

Any color combination may be used. This combination was planned for patio use with turquoise pottery. Leno to be employed as weaver wishes. Use any threading that will give a good tabby. A 4 harness twill was used for these mats.



PLACE MAT NO. 3

MATERIALS:

Warp: Lily Art. 3343,
Rayon-Jute Novelty yarn,
White

Weft: Same

Tabby: Same or
Gold Guimpe

Weave: All-over single
Huck

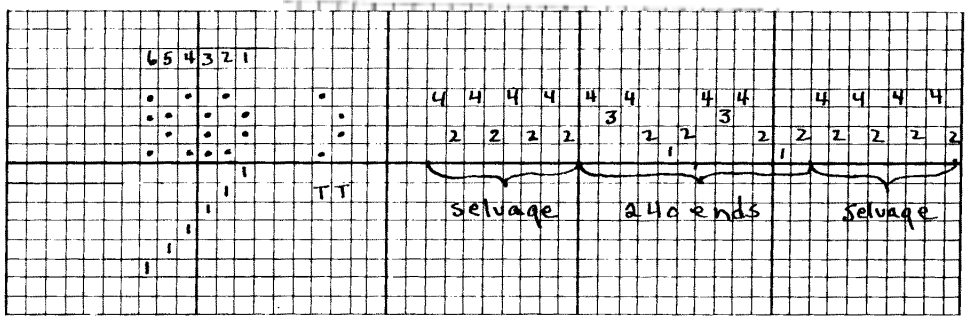
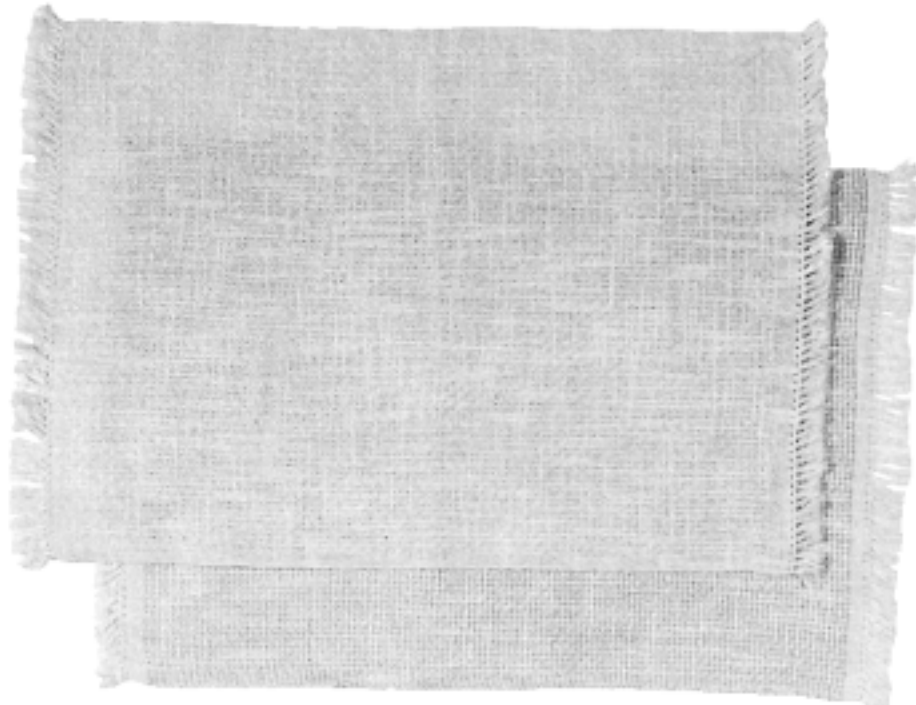
Dents In Reed: 16

Ends Per Dent: 1

Total Warp Ends: 256

Width In Reed: 16 inches

Tabby 8 shots. Weave 1-2-3-4-5-6 for desired length. Hemstitch ends on loom. These mats were made oversize to accommodate complete dinner service.



PLACE MATS NO. 4

MATERIALS:

Warp: Lily Art. 107, Linen Warp yarn,
size 10/2, Cork 645

Weft: Lily Art. 3343, Rayon-Jute Novelty
yarn, Mat A Spun Gold, Mat B Lt. Blue,
Mat C Coral

Tabby: Lily Art. 207, Linen Weft yarn,
size 20/1, Cork 645

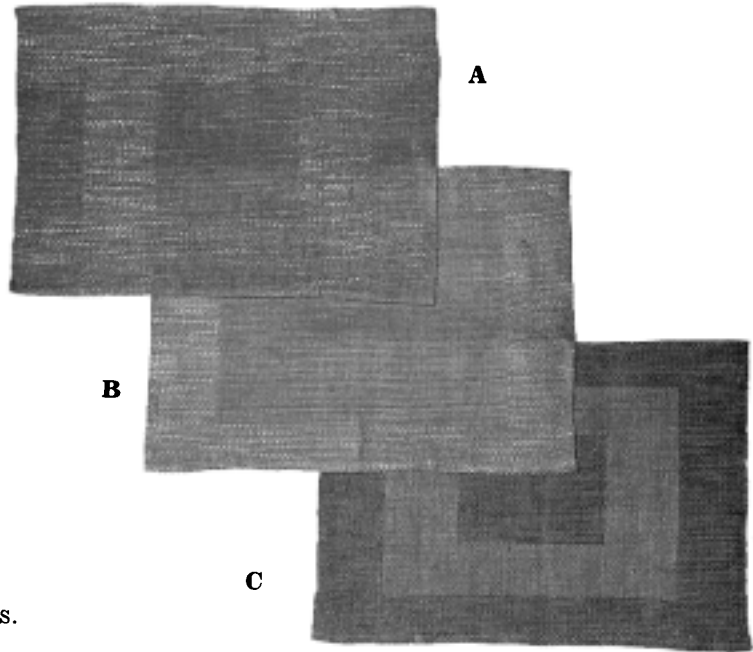
Weave: Summer and Winter

Dents In Reed: 16

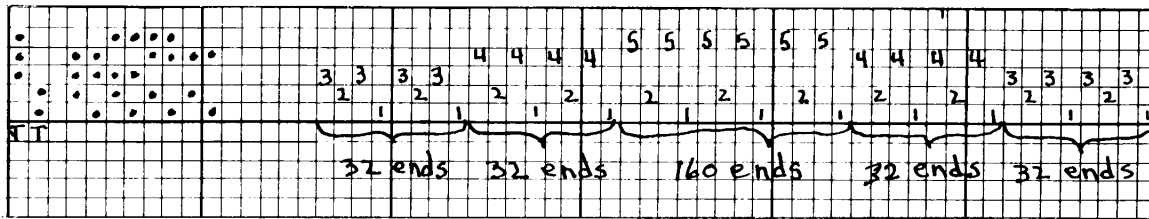
Ends Per Dent: 1

Total Warp Ends: 288

Width In Reed: 18 inches



These mats are of a smaller size —
planned for a maple dinette (round).
Mats A and B can be done on a 4 harness,
but Mat C is a 3 block and requires 5 harness.
Finish with narrow hems.



LILY ART. 3343 — Rayon-Jute Novelty Yarn
42% Rayon - 58% Jute

This yarn was not originally developed for washable articles; however, so many weavers want to use it for placemats and other washable items it is now being processed in fast colors.

Color card upon request.

The Handweaver's Headquarters

LILY MILLS COMPANY • Shelby, North Carolina

