

# practical weaving suggestions

VOL. 3-65



# CORDUROY - A PILE WEAVE

Frances A. Morgan

The pile of corduroy, a weft pile fabric, is formed with the pattern weft yarns. The weft floats that go across the fabric in a straight line are cut to form the pile. Each float must be separated by a tabby area. The overshot weft or floats are usually on the top side of the fabric, though in some threadings and treadlings they may be on both sides. The floats may be cut any desired length, depending on the length of the overshot and the design of the material. Try cutting some in different lengths for interesting design and effects. A power-loomed corduroy textile leaves the loom as a flat fabric. The floats are cut in the center of each overshot after it is taken off the loom. However, cutting floats while your weaving is on the loom is much easier and you are less apt to cut into the background yarns. Weave a few inches and then cut floats with your loom at normal weaving tension. Experiment and try both ways.

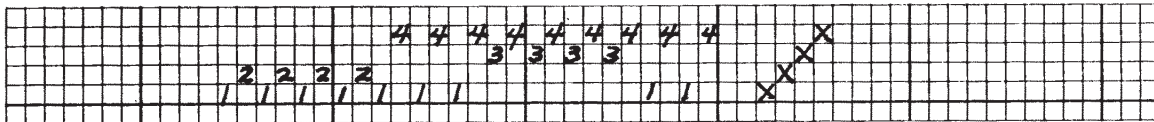
- CORDUROY:**
1. In some treadlings after the floats are cut the ground or tabby areas are usually visible.
  2. If warp is closely sett leave some of the floats uncut for a different pattern design. The closer the sett the shorter the floats or warp skips — the longer the float the longer the pile.
  3. The width and depth (pile) of the floats are controlled by the draft and the treadling. Many overshot threadings may be used for this weave. It is essential that there are tabby areas between the float areas. Otherwise the cut floats will have a tendency to pull out.

- PILE:**
1. The pile may be on one side or both sides of the fabric.
  2. It may be the same length on both sides or not.
  3. It may be short or long or both on the same side.
  4. Pile may be different colors. Try using two or more colors in the same shed.
  5. Cut the pile on the loom at your normal weaving tension.
  6. Long floats can be left uncut and the textile may be used for draperies or a room divider. Bubble weft making floats two or three times longer. Bubble your weft when making a rug or a bath mat. This makes the pile longer.

Corduroy weave may be used for decorative skirts, skirt borders, bedspreads, couch covers, draperies, room dividers, upholstery, pillows, bath mats, rugs and bags.

## Threading

## Tie-up



There are 26 threads in the above threading. With a single tie-up these treadlings are possible. The floats will be on the top of your weaving.

### Counter Balance Loom

14, 134, 124, 123, and 234  
12 and 34 floats are on both sides.  
Tabby is 13 and 24.

### Jack Loom

1, 2, 3, 4, and 23  
12 and 34 floats are on both sides.  
Tabby is 13 and 24.

### There are ten treadling combinations.

14-234, 14-123, 14-124, 123-124, 14-134	23-1, 23-4, 23-3, 23-2, 4-3, 2-4,
134-123, 124-234, 124-134, 234-134, 123-234.	3-1, 3-2, 1-2, 4-1.

### The following treadlings are for swivel weave used in some of the samples.

1, 2, 3, 4, and 23	234, 134, 124, and 14
--------------------	-----------------------

With a corduroy threading your treadling for swivel will be the opposite to corduroy so your floats will be on the bottom of your fabric.

The floats or overshots in this draft go over as many as 19 warp threads and as few as 6 depending upon the treadling used. The weft must also form a tabby with the warp between floats. As many as 17 warp threads are involved in the tabby between the floats and as few as 7 depending upon the treadling used.

- Example:** 124) weft goes over 19 warp threads  
 134) weft goes over 6 warp threads  
 14 weft goes over 6 warp threads  
 123) 17 warp threads between each float.  
 234) 7 warp threads between each float.  
 124 7 warp threads between each float.

## SAMPLE 1

*(Shown on cover, bottom row, right.)*

**MATERIALS:**

**WARP:** Lily Art. 114, Mercerized Pearl Cotton, size 3/2, Black 441.

**WEFT:** Lily Art. 120, Sports Yarn, Black 2 for tabby and  
 Lily Art. 130, Knitting Worsted, Scarlet 98 and White 1 for pattern.

Warp set 18 threads to the inch. Use a 9 dent reed — double sley.

**Treadling for a Counter Balance Loom**

Tabby 6 shots — end 24  
 \*4 white wool  
 13 black  
 4 white wool  
 24 black  
 34 Use red double  
 13 black  
 4 white wool  
 24 black  
 4 white wool  
 Tabby 6 shots — end 24  
 1 white wool  
 13 black  
 1 white wool  
 24 black  
 12 Use red double  
 13 black  
 1 white wool  
 24 black  
 1 white wool  
 Tabby 6 shots — end 24  
 \*Repeat

**Jack Loom**

Tabby 6 shots — end 13  
 \*123 white wool  
 24 black  
 123 white  
 13 black  
 12 Use red double  
 24 black  
 123 white wool  
 13 black  
 123 white wool  
 Tabby 6 shots — end 13  
 234 white wool  
 24 black  
 234 white wool  
 13 black  
 34 Use red double  
 24 black  
 234 white wool  
 13 black  
 234 white wool  
 Tabby 6 shots — end 13  
 \*Repeat

## SAMPLE 2

*(Shown on cover, top row, left.)*

**MATERIALS:**

**WARP:** Lily Art. 114, Mercerized Pearl Cotton, size 3/2, Black 441.

**WEFT:** Lily Art. 120, Sports Yarn, Black 2 for tabby and  
 Lily Art. 130, Knitting Worsted, Scarlet 98 and White 1 for pattern.

Warp set 18 threads to the inch. Use a 9 dent reed — double sley.

**Treadling for a Counter Balance Loom**

\*14 white wool  
 Two tabby shots between each  
 pattern shot — repeat 4 times  
 3 red wool  
 Two tabby shots between each  
 pattern shot — repeat 3 times  
 14 white wool  
 Two tabby shots — repeat 4 times  
 2 red wool  
 Two tabby shots — repeat 3 times  
 \*Repeat

**Jack Loom**

\*23 white wool  
 Two tabby shots between each  
 pattern shot — repeat 4 times  
 124 red wool  
 Two tabby shots between each  
 pattern shot — repeat 3 times  
 23 white wool  
 Two tabby shots — repeat 4 times  
 134 red wool  
 Two tabby shots — repeat 3 times  
 \*Repeat

## SAMPLE 3

*(Shown on cover, third row, left.)*

### MATERIALS:

**WARP:** Lily Art. 114, Mercerized Pearl Cotton, size 3/2, Black 441.

**WEFT:** Lily Art. 120, Sports Yarn, Black 2 for tabby and  
Lily Art. 130, Knitting Worsted, Yellow 10 for pattern.

Warp set 18 threads to the inch. Use a 9 dent reed — double sley.

#### Treadling for a Counter Balance Loom

\*123 yellow wool  
13 black  
Repeat 6 times using alternate tabby  
between pattern shots.  
234 yellow wool  
13 black  
Repeat 6 times using alternate tabby  
shots between pattern shots.  
\*Repeat

#### Jack Loom

\*4 yellow wool  
24 black  
Repeat 6 times using alternate tabby  
between pattern shots.  
1 yellow wool  
24 black  
Repeat 6 times using alternate tabby  
between pattern shots.  
\*Repeat

## SAMPLE 4

*(Shown on cover, second row, right.)*

### MATERIALS:

**WARP:** Lily Art. 114, Mercerized Pearl Cotton, size 3/2, Black 441.

**WEFT:** Lily Art. 130, Knitting Worsted, Emerald 62 for tabby and  
Emerald 2, used double, and Yellow 10 used single for pattern.

Warp set 18 threads to the inch. Use a 9 dent reed — double sley.

#### Treadling for a Counter Balance Loom

\*12 emerald double  
13 emerald single  
12 emerald double  
24 emerald single  
3 yellow  
13 emerald single  
3 yellow  
24 emerald single  
\*Repeat

#### Jack Loom

\*34 emerald double  
24 emerald single  
34 emerald double  
13 emerald single  
124 yellow  
24 emerald single  
124 yellow  
13 emerald  
\*Repeat

## SAMPLE 5

*(Shown on cover, bottom row, left.)*

### MATERIALS:

**WARP:** Lily Art. 114, Mercerized Pearl Cotton, size 5/2, Old Gold 79.

**WEFT:** Lily Art. 114, Floss, Old Gold 79 for tabby and the following yarns on the  
same shuttle for pattern weft:

Lily Art. 114, Mercerized Pearl Cotton, size 3/2, Old Gold 79

Lily Art. 114, Mercerized Pearl Cotton, size 10/2, Yellow 404

Lily Art. 130, Knitting Worsted, White 1 and Yellow 10

Warp set 18 threads to the inch. Use a 9 dent reed — double sley.

**Treading for a Counter Balance Loom**

**Jack Loom**

(\*124 pattern

(

(13

(

(24

Repeat 7 times

10 tabby shots

(134 pattern

(

(13

(

(24

Repeat 7 times

10 tabby shots

\*Repeat

(\*3 pattern

(

(24

(

(13

10 tabby shots

(2 pattern

(

(24

(

(13

10 tabby shots

\*Repeat

## SAMPLE 6

*(Shown on cover, third row, right.)*

**MATERIALS:**

**WARP:** Lily Art. 114, Mercerized Pearl Cotton, size 5/2, Old Gold 79

**WEFT:** Lily Art. 114, Floss, Old Gold 79 for tabby and

Lily Art. 130, Knitting Worsted, White 1 for pattern weft.

Warp set 18 threads to the inch. Use a 9 dent reed — double sley.

**Treading for a Counter Balance Loom**

**Jack Loom**

(\*234 pattern

(

(13

(

(24

Repeat 5 times

(4 pattern

(

(13

(

(24

Repeat 3 times

(123 pattern

(

(13

(

(24

Repeat 5 times

(1 pattern

(

(13

(

(24

Repeat 3 times

\*Repeat

(\*1 pattern

(

(24

(

(13

(123 pattern

(

(24

(

(13

(4 pattern

(

(24

(

(13

(234 pattern

(

(24

(

(13

\*Repeat

## SAMPLE 7

*(Shown on cover, second row, left.)*

### MATERIALS:

**WARP:** Lily Art. 114, Mercerized Pearl Cotton, size 5/2, Old Gold 79.

**WEFT:** Lily Art. 114, Floss, Old Gold 79 for tabby and  
Lily Art. 130, Knitting Worsted, White 1 and Yellow 10 for pattern weft.

Warp set 18 threads to the inch. Use a 9 dent reed — double sley.

#### Treadling for a Counter Balance Loom

(\*134 pattern yellow  
(  
(234 pattern white                      Repeat 4 times  
(  
(134 pattern yellow  
(  
(tabby 3 times

#### Jack Loom

(\*2 pattern yellow  
(  
(1 pattern white  
(  
(2 pattern yellow  
(  
(tabby 3 times

10 tabby shots between each pattern unit.

\*Repeat

\*Repeat

## SAMPLE 8

*(Shown on cover, top row, right.)*

### MATERIALS:

**WARP:** Lily Art. 114, Mercerized Pearl Cotton, size 5/2, Old Gold 79

**WEFT:** Lily Art. 114, Mercerized Pearl Cotton, size 3/2, Old Gold 79 for tabby and  
Lily Art. 130, Knitting Worsted, White 1 and Emerald 62 for pattern weft.

Warp set 18 threads to the inch. Use a 9 dent reed — double sley.

#### Treadling for a Counter Balance Loom

(\*123 emerald  
(  
(Tabby 2 times                      Repeat 4 times

#### Jack Loom

(\*4 emerald wool  
(  
(Tabby 2 times

Tabby 3 times between each pattern unit

(3 white wool  
(  
(Tabby 2 times                      Repeat 6 times

(124 white wool  
(  
(Tabby 2 times

Tabby 3 times between each pattern unit

\*Repeat

\*Repeat

---

---

*The Handweaver's Headquarters*

**LILY MILLS COMPANY • Shelby, North Carolina**