

PRACTICAL WEAVING SUGGESTIONS

VOL. 4-58



PLACE MATS

SUSAN R. SHERBURNE

BLUEBERRY HILL

PLAINFIELD, INDIANA

One of the joys of weaving is that of experimentation. Often the loom is threaded to a simple four-harness pattern, weft chosen, and place mats woven. The weaver then goes on to another project, not realizing what she has missed by being content with the completion of this particular bit of weaving. She will look at the mats and decide they are beautiful (if they have turned out the way she visioned them) and, thinking of the wool she has on hand, she will decide that now is the time to get that stole on the loom. The place mats are finished, and without thinking further about them, she puts them aside, and goes merrily on her way weaving the stole.

Recently in our home, new dishes called for new place mats. While most of the mats woven in the past were of linen, this time I wanted something that really would "stay-put", be less expensive and also be reversible. The loom was threaded to this simple draft shown in this article, with Lily's Art. 714 Ecrú K-4. Weft used was Art. 114, 5/2 White, doubled on the shuttle. The mats were finished on the loom by hemstitching, which can be done much better with a cotton warp than with a linen one. The result was lovely.

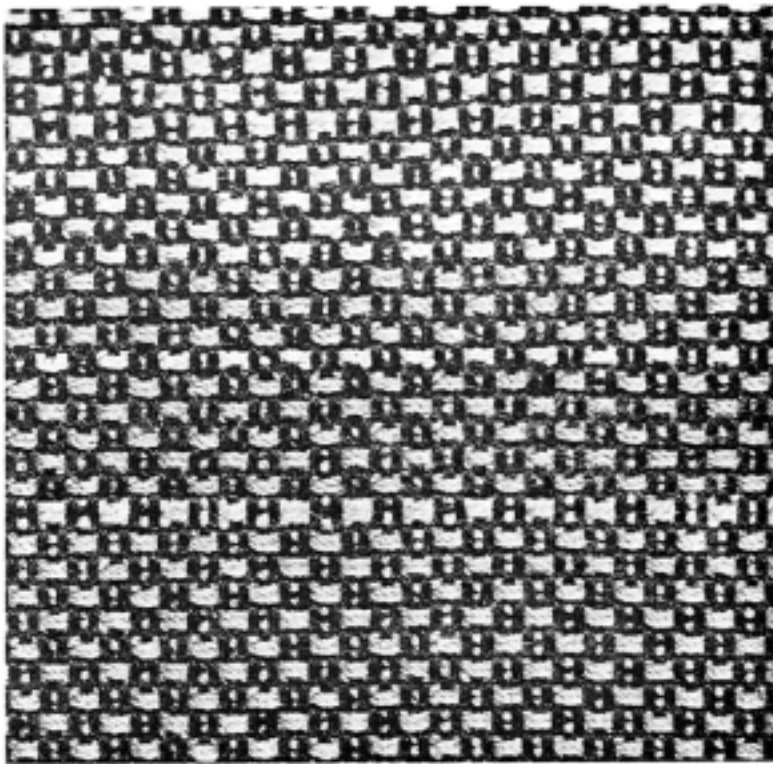
Now, I stopped to wonder what another mat would look like, if I used the same draft, treadled it in the same way, but chose a different weight yarn for the warp and another weight for the weft. So the project started. The real thrill from the experiment came with my discovery of the wide range of possibilities with beautiful Lily cottons, using this simple threading. Eight warps in all were put on the loom — six were treadled in the same manner; one was done in tabby; another treadled in a different way. The "look" of each mat was different; such an amazing thing to have happened!

They were designed for flexible adaptability. Moreover, those woven in solid colors were especially desirable for modern living and decor. Other Lily warps and wefts could have been used, and different results would have come from the loom. All of them, I am confident, would have delighted the weaver.

The project was interesting; it was fun! I wanted to go on and try many more combinations of yarns for warps and wefts, but the thought of the stole was still in my mind — so another day, I shall come back again to this little draft and more place mats, which I feel sure, woven with Lily yarns, will prove to be all that I anticipate.

Instructions for Hemstitching on a Loom

These instructions are for plain tabby weaving. Start from left to right with the first weft yarn. Cut yarn the length of four times the width of the mat, and put through the eye of a tapestry needle. Put needle under first four warp threads **BELOW** first shot on loom. Hold thread firmly, then go around the four threads again, only this time put needle up **ABOVE** first shot on loom. Pull thread tight and continue across loom with hemstitching. Then continue weaving mat with shuttle. When the mat is woven, the last weft thread will be at the right side of the loom. Again cut thread to four times width of mat, and put through eye of tapestry needle. Go under first four warp threads **ABOVE** last shot on loom. Hold thread firmly. Then go around threads again, only this time, place needle **BELOW** the last weft thread. Pull tight and continue across loom with hemstitching.



STRIPED MAT – BLACK WEFT

Materials:

Warp: Lily Art. 714, size 10/3, Red K-95;
Lily Art. 114, size 5/2, Pimiento 773,
size 10/2, Lt. Olive 1451 and size 10/2,
Gold 79;
Lily Art. 314, size 10/2, Dark Jade
1450

Weft: Lily Art. 114, Floss Black 441

Warping Plan:

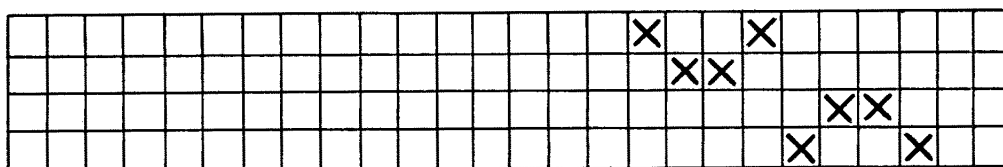
Warp:	(29 threads	Art. 714	10/3	Red K-95
	(4	" "	114	5/2 Pimento 773
	(16	" "	314	10/2 Dark Jade 1450
	(12	" "	114	10/2 Light Olive 1451
	(8	" "	314	10/2 Dark Jade 1450
	(4	" "	114	10/2 Gold 79
"A"	(8	" "	114	5/2 Pimento 773
	(16	" "	114	10/2 Light Olive 1451
	(8	" "	314	10/2 Dark Jade 1450
	(4	" "	114	10/2 Gold 79
	(12	" "	314	10/2 Dark Jade 1450
	(4	" "	114	5/2 Pimento 773
	(40	" "	714	10/3 Red K-95
	(4	" "	114	5/2 Pimento 773
	(20	" "	314	10/2 Dark Jade 1450
	(4	" "	114	10/2 Gold 79
	(12	" "	314	10/2 Dark Jade 1450
Center of mat	(16	" "	114	10/2 Light Olive 1451
	(4	" "	114	10/2 Gold 79
	(12	" "	114	5/2 Pimento 773
	(4	" "	114	10/2 Gold 79
	(16	" "	114	10/2 Light Olive 1451
	(12	" "	314	10/2 Dark Jade 1450
	(4	" "	114	10/2 Gold 79
	(20	" "	314	10/2 Dark Jade 1450

To Complete Warp Reverse Section "A".

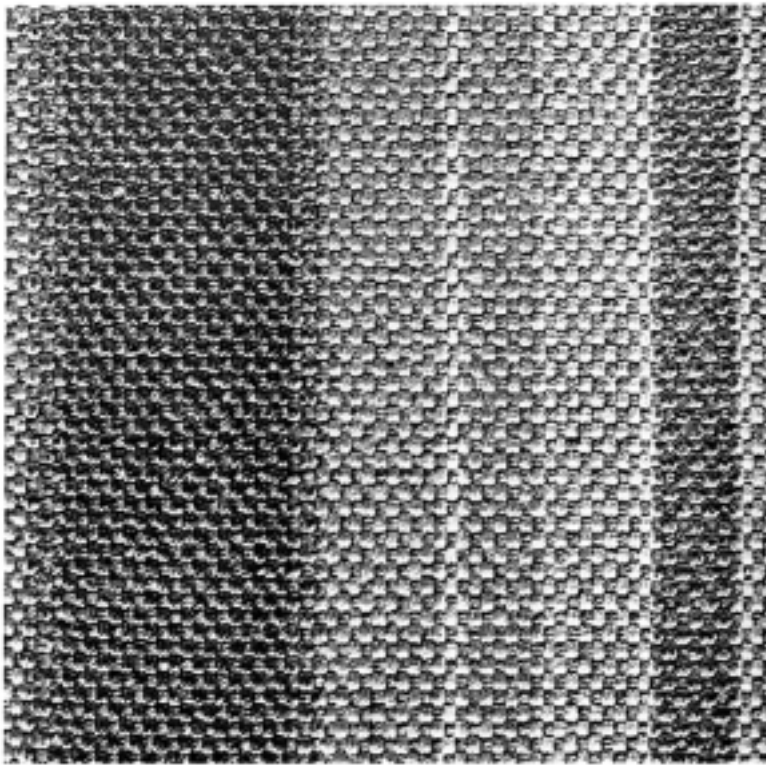
Warp was Sett 32 threads per inch.

Treadle: 12, 24, 12; 34, 13, 34 and repeat.

Hemstitch on loom.



A 4 HARNES, 8 THREAD GROUP, REPEATED THROUGHOUT



BROWN STRIPED MAT

Materials:

Warp: Lily Art. 114, size 10/2 Chili Brown 656, size 5/2 Mahogany 654, size 10/2 Med. Jade 1449 and size 10/2 Gold 79; Lily Art. 314, size 10/2 Dark J a d e 1450

Weft: Lily Art. 114, Floss Chili Brown 656, doubled on shuttle.

