

PRACTICAL WEAVING SUGGESTIONS

VOL. 2 - 61



A WEAVE FOR CASEMENT CLOTH

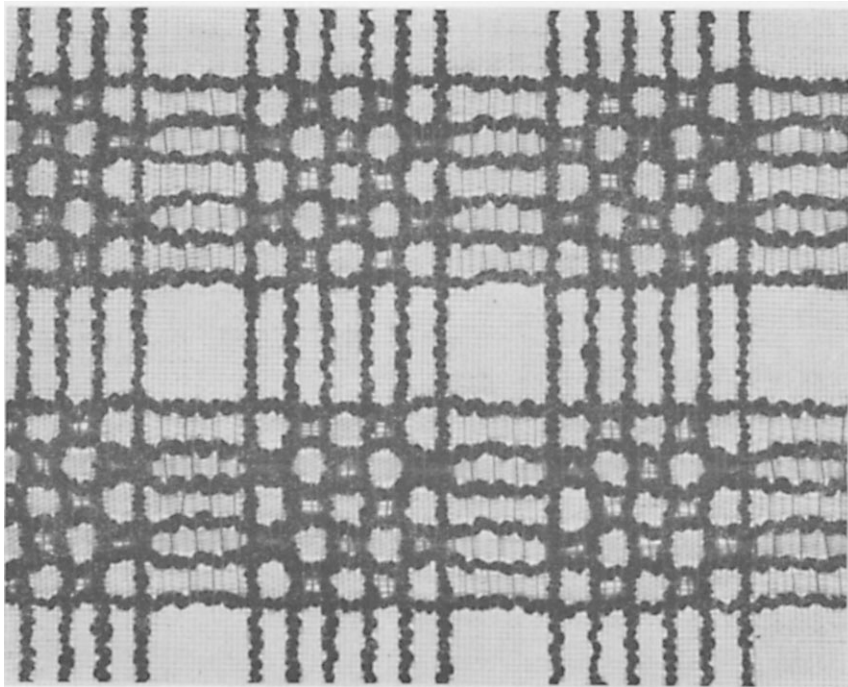
Ella S. Bolster

While weaving a sampler to explore the possibilities of Huck some time ago I developed this variation which has the appearance of honeycomb but has the heavy deflected threads in both warp and weft instead of only in the weft. The resulting casement cloth shown on the cover is a veteran of many exhibitions and recipient of several awards. It was also chosen for the Design Quarterly issue, American Weaving.

It was woven of Lily Art. 314, Unmercerized Cotton, size 20/2, using Lily Art. 105, Novelty Yarn size 2, for the deflected threads.

The Lily Novelty proved to be an excellent choice as it has the beauty of texture without the weak spots found in many textured yarns and so presented no problems as a warp yarn.

Upon being asked to write an issue of Practical Weaving Suggestions I have made a few additional samples using this idea. Other weavers may find it fun to try one or another of these drafts as a stepping stone to developing further ideas of their own. Since these recent samples are simple and regular repeats we shall list them first.

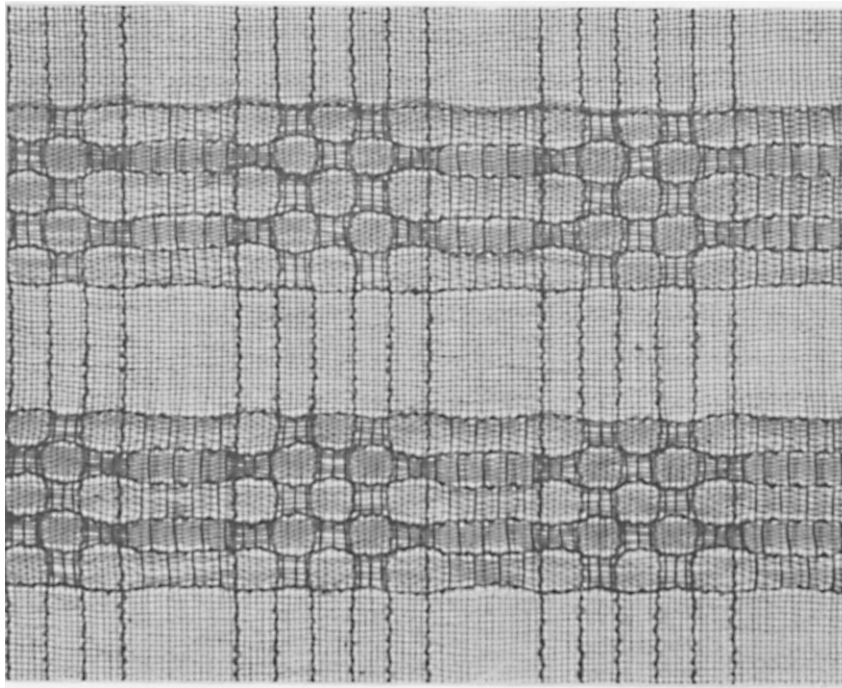


SAMPLE 1-A

Materials:

Warp: Lily Art. 314, Unmercerized Cotton, size 20/2, natural or white, and
Lily Art. 105, Novelty Yarn, size 1, in color.

Weft: Same as warp.



SAMPLE 1-B

Materials:

- Warp:** Lily Art. 314, Unmercerized Cotton, size 20/2, natural or white, and
Lily Art. 105, Novelty Yarn, size II, in color.
- Weft:** Same as warp.
- Sett:** 24 to the inch in a No. 12 reed.

Fabric I-A would make a gay kitchen curtain if the novelty threads were used in a bright shade or perhaps two bright colors such as Jade (N-501) and Skipper Blue (N-920).

Gold (N-79) or Light Green (N-767) or any color which matches the decor. It will drape a little better than I-A.

Fabric I-B which uses the finer novelty yarn would make a daintier casement cloth for any room and would be pretty in Old

The draft which follows is for both fabrics, with the novelty thread shown by a circled numeral. Repeat the 48-thread draft as often as necessary and add a tabby selvage at either side.

Draft I:

48	31
4 3 4 3 4 3 4 3	4 4 4 4 4 4 4 4
2 2 2 2 2 2 2 2	2 2 2 2 2 2 2 2
	⊙ ⊙ ⊙ ⊙ ⊙

Tie-up I:

	4	4	3	3	A
	2	2	2	2	
	1	1	1	1	
	1	2	3	A	
cap					
B					

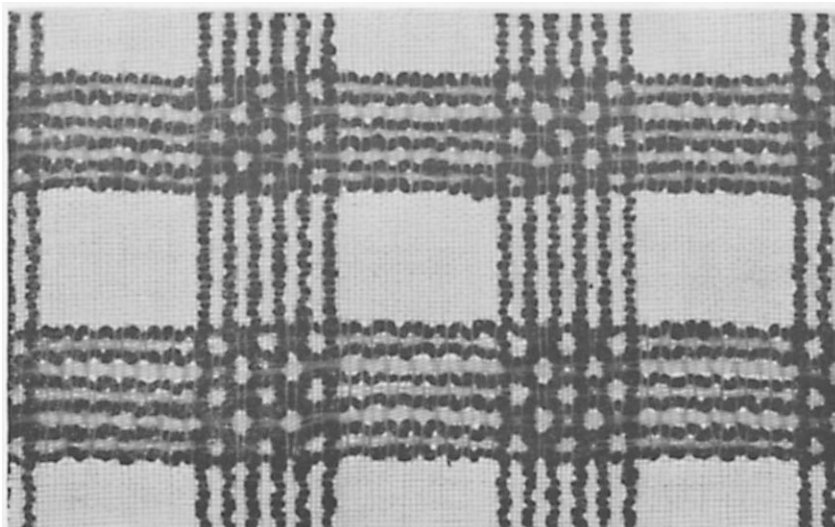
Treading for I:

Pattern: 1 (color), 2, 1, 2, 1, 2, 1, 2, 1, 2, 1 (color)
3, 1, 3, 1, 3, 1, 3, 1, 3, 1, 3.

Repeat both lines. Then repeat first line only.

Weave tabby between patterns until square.

A, 1, A, 1, A, 1, etc. (Always begin and end on A.)



SAMPLE II

Materials:

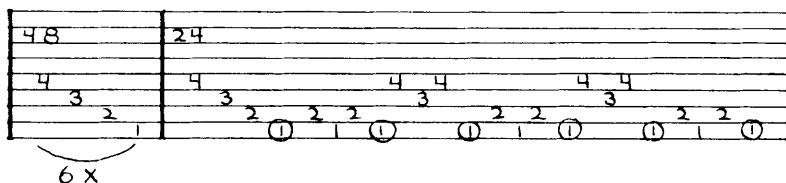
- Warp:** Lily Art. 314, Unmercerized Cotton, size 20/2, natural or white, and
Lily Art, 105, Novelty Yarn, size I, in color.
- Weft:** Same as warp.
- Sett:** 24 to the inch in a No. 12 reed.

This fabric could be a curtain or could even, if one wished, be used for table mats as the floats are short, and the size I heavy novelty threads used close together give it a firmer quality than the other samples. However, the curve of the colored threads in this weave is more apparent when viewed

with light shining through it as at a window.

Sectional beamers will notice that all of these drafts are planned on a unit of two inches. Every two-inch section of I and II requires 48 threads, 42 of which are 20/2 and 6 are novelty.

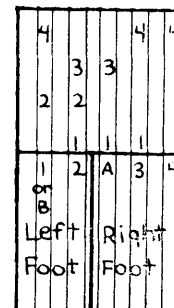
Draft II: (Circles around 1's indicate novelty thread)



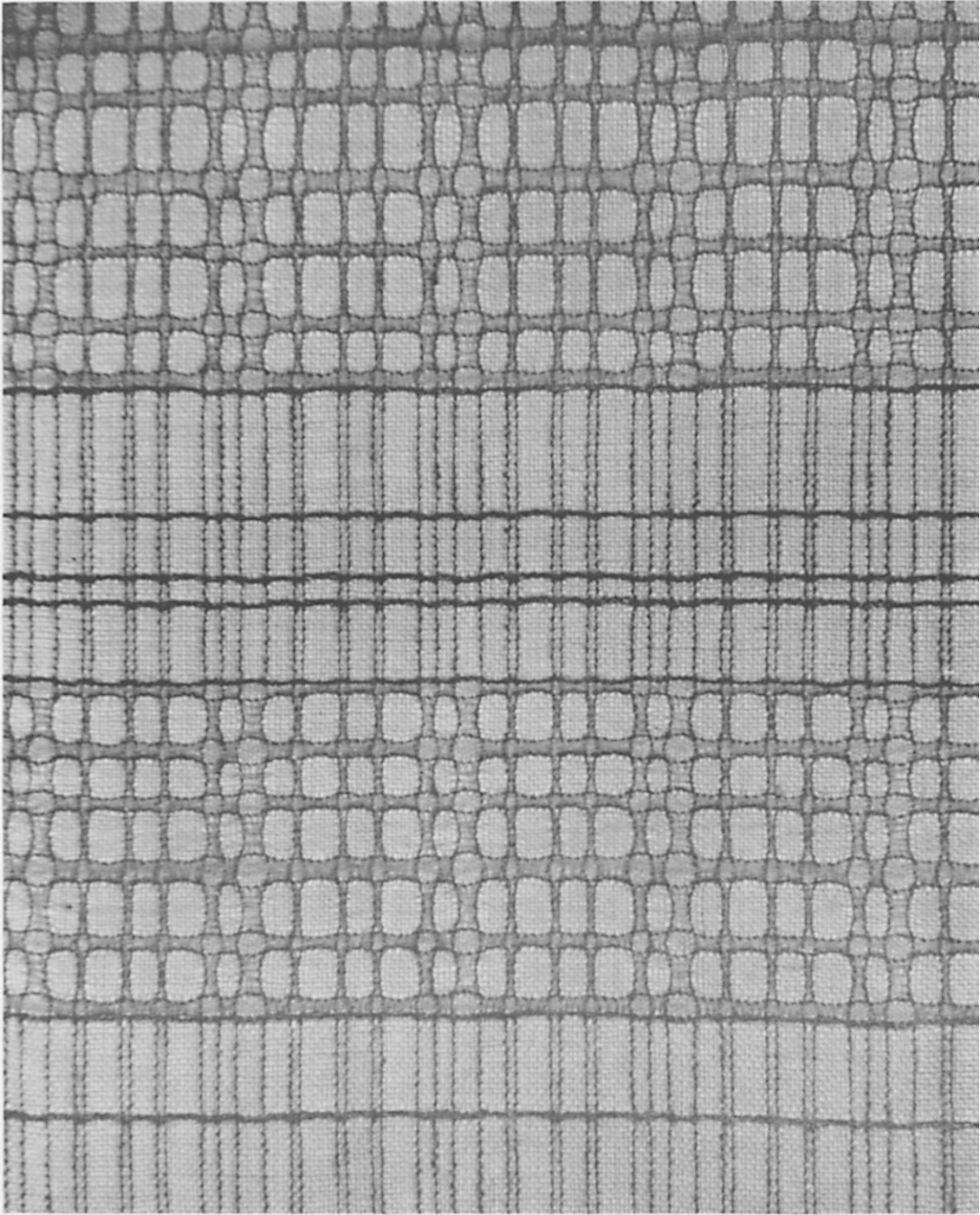
Treading:

Pattern: 1 (color), 3, 1, 3, 1, 3, 1 (color)
2, 4, 2, 4, 2, 4, 2

Repeat both lines. Then repeat first line only.
Weave tabby between patterns until square.
A, 1, A, 1, A, etc. (Always begin and end on A.)



Tie-up II:
(All tie-ups are for Rising Shed Loom.)



CASEMENT CLOTH III with random patterns

CASEMENT CLOTH III with random patterns

Materials:

Warp: Lily Art. 314, Unmercerized Cotton, size 20/2, natural, and

Lily Art. 105, Novelty Yarn, size II, Yellow (N-404).

Weft: Same as warps.

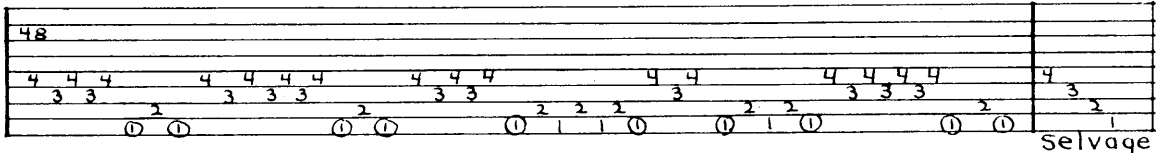
Sett: 24 threads to the inch in a No. 12 reed 40 inches wide (or more)

Each two-inch section (1 repeat of the random pattern) requires:

10 threads of Lily Novelty Art. 105, size II.
38 threads of Lily Art. 314, 20/2.

Add four threads of 20/2 at each end section for selvages.

Draft: (Circles indicate yellow novelty)

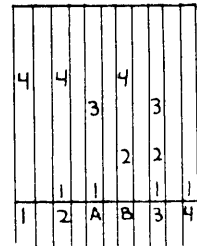


Treadling:

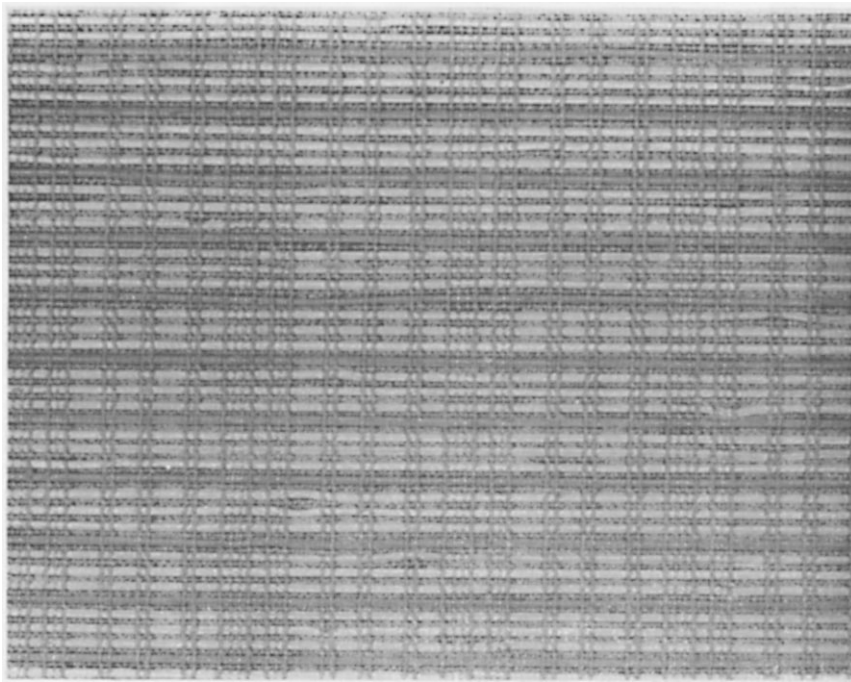
Tabby areas: A and B alternately, beginning and ending with A.
Yellow lines in tabby area: 4, 1, both in yellow novelty.
(Put in 1, 2 or 3 of them at random as in photograph.)

Pattern areas: 1 in yellow and 4 in yellow at beginning for heavy line.
B, 2, B, 2, B, 2, B in yellow.
3 in yellow, 1, 3, 1, 3, 1, 3 in yellow.

Repeat both lines several times, making some stripes wider and some narrower at random as in photograph. End each stripe with B, 2, B, 2, then 4, and 1, both in yellow, as at beginning of stripe.



Tie-up:
(Rising shed loom)



IV BLINDS to match Casement Cloth III

Materials:

Warp: Lily Art. 314, Unmercerized Cotton, size 20/2, natural, and

Lily Art. 105, Novelty Yarn, size II, Yellow (N-404).

Weft: Lily Art. 105, Novelty Yarn, size II, Yellow (N-404) and Matchstick Bamboo painted white. Matchstick Bamboo painted yellow.

When weaving the Casement Cloth III put a few more yards of warp on the loom and weave blinds to match on the same warp.

Inserting matchstick bamboo puts a strain on the warp threads on Harness 1,

but the novelty thread is remarkably strong for so fine a textured thread, and I had no broken threads at all. If one were doing a very long yardage of blinds a second warp beam might be advisable.

Draft and Tie-up are those of III.

Treadling:

A, B, in yellow novelty
1, a stick of bamboo painted white
Repeat both twice more, for a total of
3 white sticks.
4th time insert a stick of bamboo painted yellow.
Continue in this manner for entire length of blind.

ART. 314 LILY Unmercerized Cotton Yarn for Warp or Weft

FAST COLORS



White	458 Dk. Rose Pink	1019 Pink
Natural	501 Jade	1211 Brown
Natural Egyptian	522 Navy	1260 Rust
402 Orange	539 Steel	1262 Lt. Pink
404 Yellow	562 Bottle Green	1402 Linen Color
406 Lt. Yellow	574 Old Rose	1431 Taupe
407 Violet	655 Maroon	1432 Buff
409 Orchid	656 Chili Brown	1450 Dk. Jade
429 Emerald	767 Lt. Green	1457 Bright Orange
438 Red	920 Skipper Blue	1458 Coral
440 Scarlet	992 Blue	1460 Topaz
441 Black	993 Med. Blue	1462 Chartreuse

ART. 105 LILY Novelty Yarn

FAST COLORS

Size I and II Offered in the Following Colors:

White	N-459 Green	N- 920 Skip Blue
Natural	N-501 Jade	N- 952 Lt. Blue
N- 79 Old Gold	N-539 Steel	N- 984 White
N-404 Yellow	N-656 Chili Brown	N- 993 Med. Blue
N-406 Lt. Yellow	N-767 Lt. Green	N-1211 Brown
N-440 Scarlet	N-862 Natural	N-1447 Raspberry
N-441 Black	N-908 Sal. Rose	N-1462 Chartreuse



Order All Your HAND WEAVING
Supplies From The HAND WEAVERS HEADQUARTERS

LILY MILLS COMPANY
Shelby, N. C.