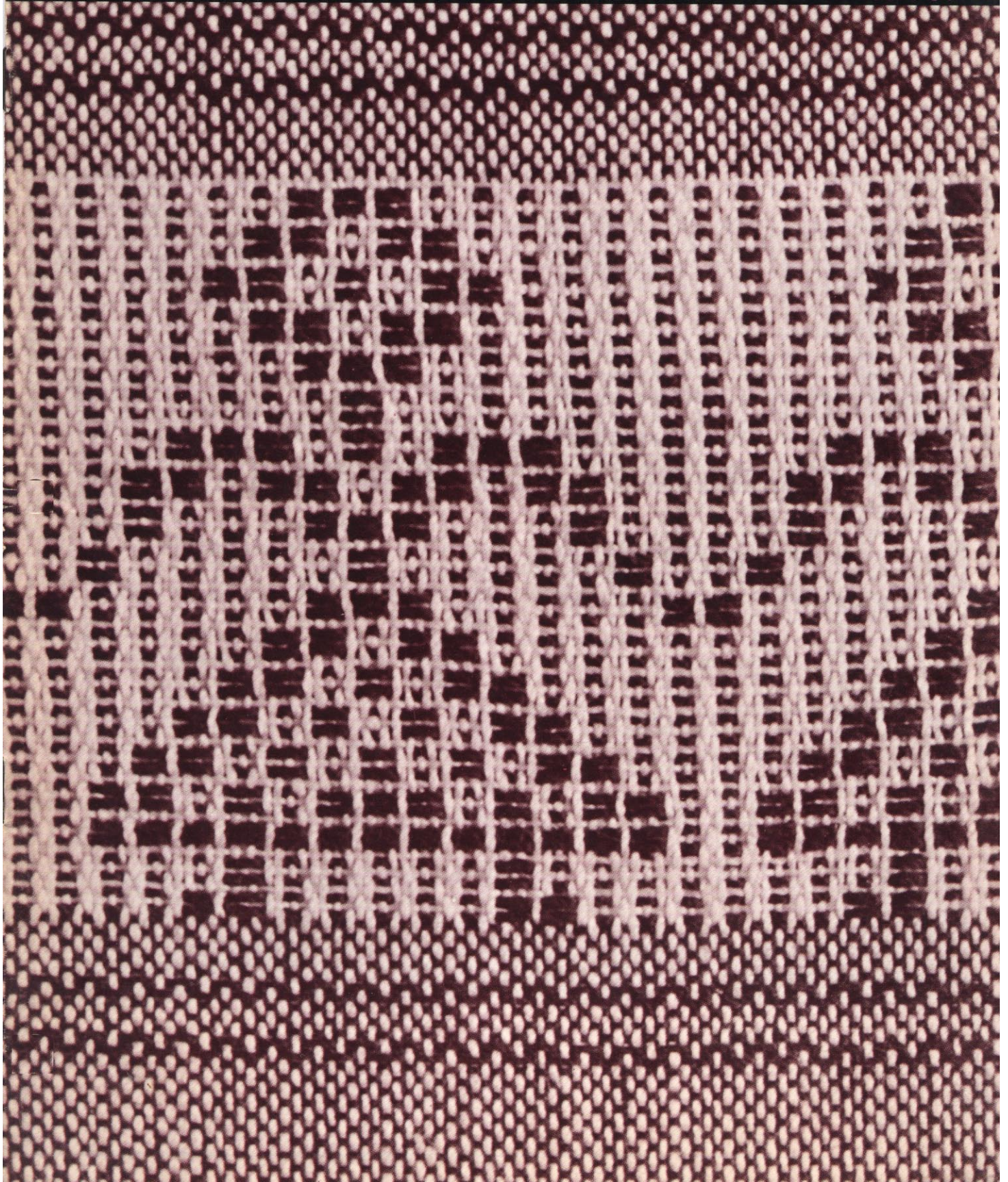


PRACTICAL WEAVING SUGGESTIONS

VOL. 1-64



THE PAPER DOLL WALL-HANGING

by Norma R. Johnson

More than 20 years ago, I began playing with the idea of weaving separate little figures on a plain background. Since I didn't like pick-up weaving and was not satisfied with the unrealistic figures possible on 4-harnesses, my first few attempts were on a modified point threading in Summer and Winter technique on an 8-harness loom. I developed many interesting designs but not all were in good proportion. Still I'd discovered that I could make pine trees that looked like pine trees and the little girls were recognizable. Then I had an inspiration to try the little girl figures for a bordered skirt for my 2-year-old daughter. It was a huge success! But I wasn't entirely satisfied until I had developed this 10-harness arrangement producing much more realistic picture designs. Suddenly I was in business custom weaving bordered Mother and Daughter skirts, and my customers began calling it the Paper Doll pattern — hence its name. Made entirely of **Lily's Unmercerized Cotton Warp, Art. 314**; warp size 20/2 and weft size 10/2, they were washable and durable and very practical. My daughter, now 23, has kept all of her skirts, 11 of them as well as many plaid dresses, for they simply cannot be worn out and she will not part with them.

During the Christmas season, on this same threading, I make stars, crosses, pine trees, fireplaces, wreaths, candles and a church with a star on top of the steeple, to be used for mats, wall-hangings or book-

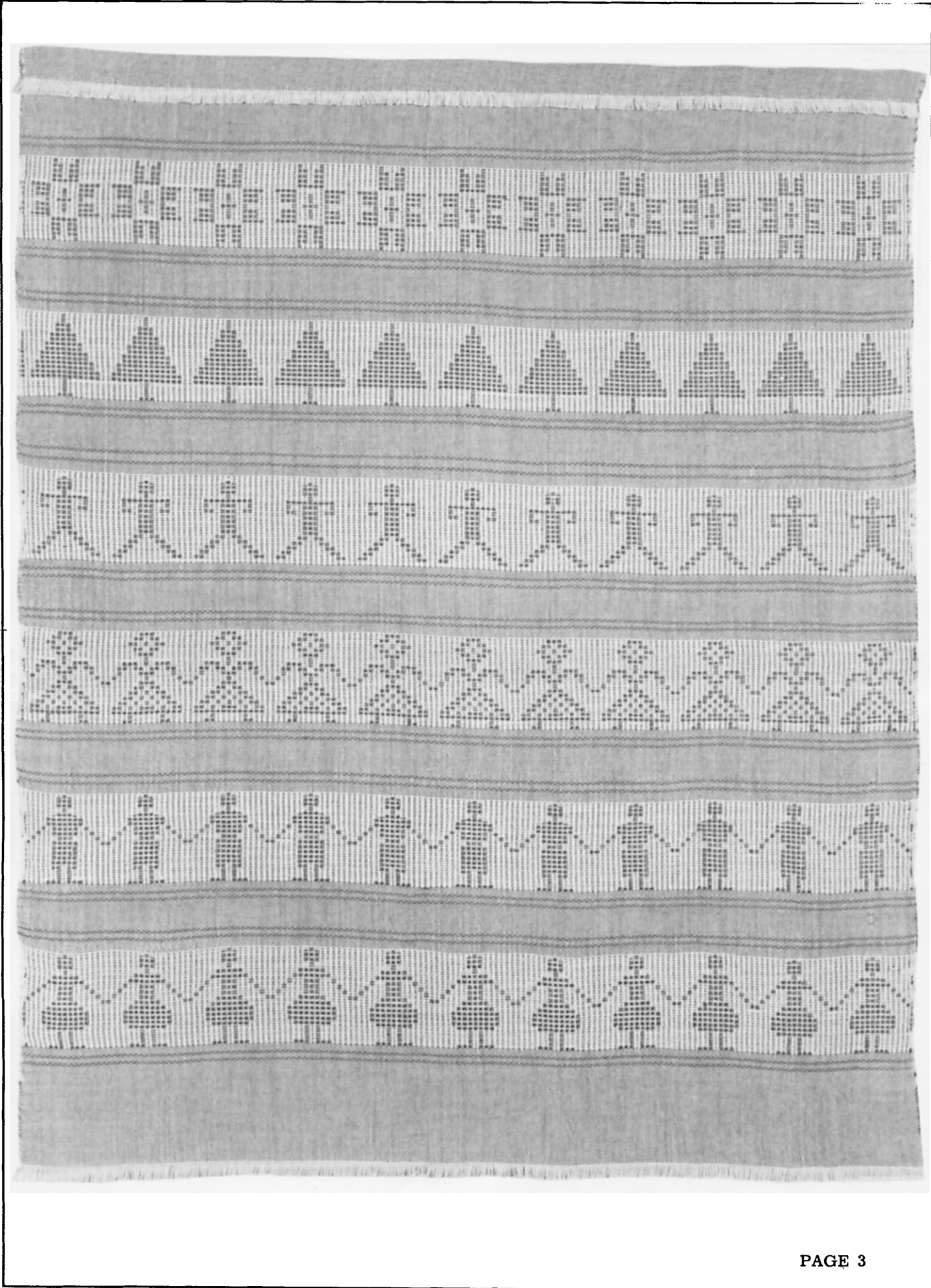
marks — even greeting cards. I've also made refreshment napkins or mats with hearts, clubs, diamonds and spades which look so realistic that no explanation is necessary. The creative weaver will be able to add many more designs on this basic threading.

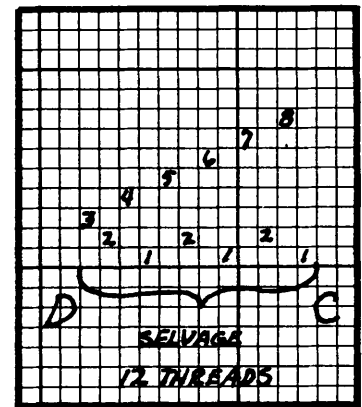
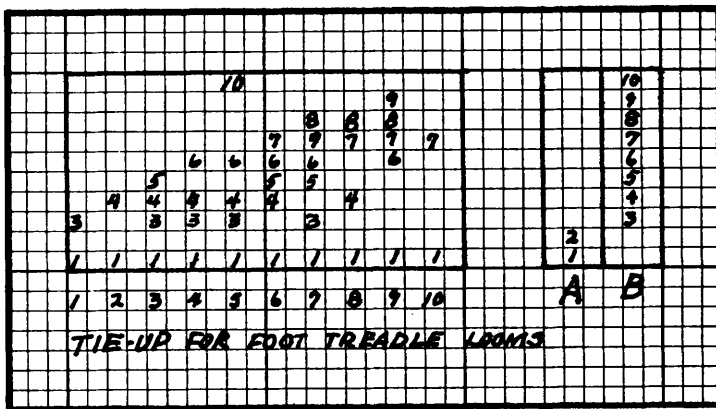
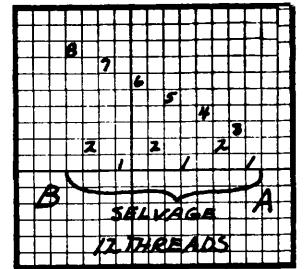
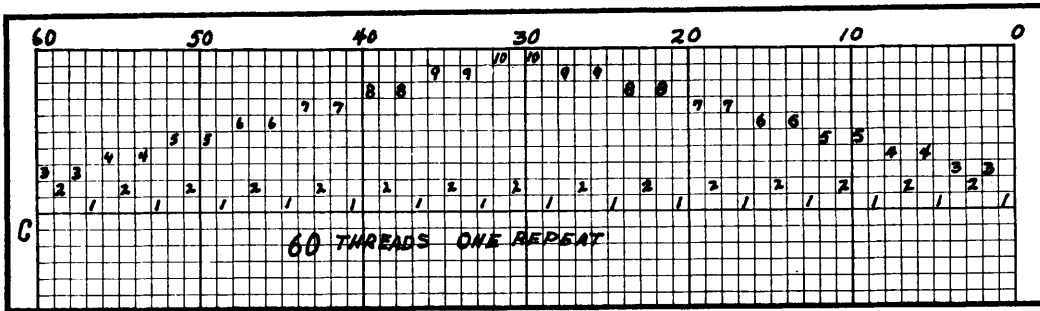
The illustrated wall-hanging shows the more popular designs. Mary Atwater's book, *The Shuttlecraft Book of American Hand Weaving*, explains the Summer and Winter technique very well.

All of these designs were planned for 10-harness finger lever looms, but by depressing two treadles at a time, it is possible to weave the little boys and girls and the pine trees on one tie-up on a 12 treadle loom. The other patterns would require many changes in the tie-up, but it is not impossible.

If you wish the figures to be even more sharply defined, use the same thread for warp but set 40 to the inch instead of 30. If the designs then tend to be out of proportion, use finer thread for weft or tabby or both.

The wall-hanging serves well not only as a wall-hanging, but as a sampler from which, using squared paper or experimenting on the loom, you can develop many more designs of your own. The scope is unlimited and the results are very rewarding.





Tie-up for foot treadle looms for weaving little girls and boys and pine trees.

In order to make the figure pictures sharp, I recommend treading in the "bold" manner, omitting treading harness 2 except in the tabby. In fact, with foot treadle looms, only the simplest figures can be woven in the conventional manner.

An important matter that many weavers overlook is the sequence of weft and tabby shots. In this threading, I strongly suggest that, while you read your draft from right to left, be sure that the threading develops from left to right as you face the front of the loom. Then begin your weft treading from right to left, followed by tabby A also from right to left; your second weft shot

of each unit (which employs the same harness as the first) goes from left to right, followed by tabby B, also from left to right. This completes one unit in the development of the pattern. This sequence of weft and tabby allows the weft shots to come close together, making a much better looking design. If, however, it is your custom to begin threading from the right side of the loom as you face the front of it — and weavers differ about this — go ahead and thread it that way, but after your first weft shot, use tabby B and after your second weft shot, use tabby A. The effect will be the same if you are consistent in it.

THREADING PLAN:

WARP: Lily Art. 314, Unmercerized Cotton Warp Yarn, size 20/2 in rust 1260 and white

WEFT: Lily Art. 314, Unmercerized Cotton Warp Yarn, size 10/2 in rust 1260

Using the white warp, thread from A to B once, from B to C 11 times or as desired, from C to D once. Total of warp ends, 684. Sley 2 to a dent in a 15 dent reed, making the width on the loom 22.8 inches. Notice that unit 1,3,2,3, appears at both beginning and end of draft, making a double unit between woven figures.

For three of these designs, I will give the treadling for the finger lever looms and the foot treadle looms. It is not prac-

tical to give foot treadle weaving for the others, for it would require many changes in the tie-up and would be quite confusing.

As mentioned before, each unit is 4 shots, of which 1 and 3 are the same in rust 10/2; the 2nd shot on A, the 4th on B in white 20/2. Only the first shot of weft treadling is given; it is assumed that the weaver from this description will be able to weave the other 3 shots in each unit.

WEAVING DIRECTIONS:

After preliminary try-outs, weave tabby for 3 inches in rust 20/2. If you are using a finger lever loom, treadle harness 1, harness 2, 4 shots tabby, treadle 1, treadle 2, and 6 shots tabby, all of rust 20/2. (If you have a foot treadle loom, treadle 2 shots tabby in rust 10/2, 4 shots tabby

in rust 20/2, 2 shots tabby in rust 10/2, 6 shots tabby in rust 20/2.)

The stripe between the little girls and boys, pine trees, etc. is the same in each case. That will be described first, then the figures.

TREADLING FOR STRIPE BETWEEN FIGURES:

Tabby in rust 20/2 6 shots

Treadle 1, treadle 2 (Treadle looms use 2 shots tabby rust 10/2)

Tabby rust 20/2 4 shots

Treadle 1, treadle 2 (Treadle looms use 2 shots tabby in rust 10/2)

Tabby rust 20/2 for $\frac{3}{4}$ inches.

Reverse to beginning of stripe. Omit or add one tabby shot if necessary to bring shuttle back to proper side to begin pattern weaving.

Note: In order to make designs clearly defined, beat sharply and firmly. Always start each pattern unit from the same side, and the results will be more satisfactory.

Note: Treadling directions for each different kind of design will not necessarily appear in the same order that they are woven in the wall-hanging.

Note: For the right combination of strength and softness, be sure to use the Lily yarn specified. Substitution may make the designs too squatty or too tall.

LITTLE GIRLS

Finger lever looms
Raise harnesses

Foot treadle looms
Treadle

13456 10	1 unit	feet	3 & 5
1345678 10	3 units	legs	5 & 7
13456	1 unit	skirt	3 & 4
1345	3 units	skirt	3
13456	1 unit	skirt	3 & 4
1 4567	1 unit	hands and skirt	6
13 5678	1 unit	arms and skirt	7
134 678	1 unit	arms and waist	4 & 8
1345 78	1 unit	arms and waist	3 & 8
13456	1 unit	shoulders	3 & 4
134567	1 unit	shoulders	1 & 6
13456789	1 unit	neck	3 & 9
1345678	2½ units	head	2 & 7
13456789	½ unit	head	3 & 9

LITTLE BOYS

13456 10	1 unit	feet	3 & 5
1345678 10	2 units	legs	5 & 7
134567 10	2 units	pants	5 & 6
134567	4 units	pants	1 & 6
1 4567	1 unit	hands and pants	6
13 5678	1 unit	waist and arms	7
134 67	1 unit	shirt and arms	4 & 10
1345 7	1 unit	shirt and arms	3 & 10
13456	2 units	shoulders	3 & 4
134567	½ unit	top of shoulder	1 & 6
1345678	½ unit	top of shoulder	2 & 7
13456789	1 unit	neck	3 & 9
1345678	2½ units	head	2 & 7
13456789	½ unit	top of head	3 & 9

PINE TREES

1345678	1 unit	base of tree	2 & 7
13456789	3 units	trunk of tree	3 & 9
13	2 units	tree limbs	1
134	2 units	tree limbs	1 & 2
1345	2 units	tree limbs	3
13456	2 units	tree limbs	3 & 4
134567	2 units	tree limbs	1 & 6
1345678	2 units	tree limbs	2 & 7
13456789	2 units	top of tree	3 & 9



GUATEMALAN GIRL

Finger lever looms
Raise harnesses

1345 8910	1 unit	feet
13456 8910	1 unit	legs
13	1 unit	bottom of skirt
13 6 8	1 unit	skirt
134 7 9	1 unit	skirt
1345 8 10	1 unit	skirt
13456 9	1 unit	skirt
134567 10	1 unit	skirt
1 45678	1 unit	skirt and hands
13 56789	1 unit	waist and wrists
134 678	1 unit	blouse and arms
134 7 10	1 unit	bust and arms
1345 9	1 unit	shoulders and neck
13456789	1 unit	neck
1345678	1 unit	head
134567 10	1 unit	head
13456 9	1 unit	center of head
134567 10	1 unit	head
1345678	1 unit	top of head

THE JUMPING BOY

1345678910	1 unit	(may be omitted)
13 678910	1 unit	feet
134 78910	1 unit	legs
1345 8910	1 unit	legs
13456 910	1 unit	legs
134567 10	1 unit	legs
1345678	4 units	waist
1345 8	1 unit	hands and waist
1345 78	1 unit	arms
1345	1 unit	arms and shoulders
13456789	1 unit	neck
1345678	2½ units	head
13456789	½ unit	top of head
1345678910	1 unit	(may be omitted)

8-POINTED STAR WITH CROSS

134567 910	1 unit
134567 10	3 units
134567	1 unit
13 8910	1 unit
134 89	2 units
13456 8	1 unit (center)
134 89	2 units
13 8910	1 unit
134567	1 unit
134567 10	3 units
134567 910	1 unit

(First and last units are merely space makers, to make this border as wide as the others.)

After weaving all the border stripes and the stripes between, reverse for heading as at beginning, but make the tabby space 2 inches longer, so that it may be hemmed to put in a rod for hanging on the wall.

