

# practical weaving suggestions

VOL. 1-68



# DRESSES, SHIFTS AND PULL-OVERS

Inspired by a visit to Greece by  
Osma Gallinger Tod

Nowhere in Europe is there such devotion to weaving as both an art and a means of income as in Greece. The weavers there inherit a love of weaving from centuries of practice by their ancestors. The attractive items shown here were brought back from a recent trip to the Old World to study their weaving methods. We found this art very much a part of the daily lives of the Greek people, and because so many of them are constantly weaving so many lovely things, their methods are worth a bit of study. They have developed remarkable skills in operation and produce their handwovens with a minimum of time, effort and expense.

In the first place they are skillful with their choice of colors. Possibly it is a sense of economy that makes the home weaver use anything and everything, and they come up with the most refreshing color schemes. Their fine cotton and wool yarns are similar in size and texture to Lily's yarns, so after catching a glimpse of their freedom of expression in color, we can originate dress creations of our own. We surely have a bountiful supply of yarns to choose from. Nowhere in our travels through six countries did we see a yarn palette comparable to that which our thread companies offer us here in America. It has always been a marvel to me how they can furnish such a quantity of close shades in such a variety of dyes. In Europe weavers often have to stop to dye their own to get the desired shade, and while dyeing is indeed an art and quite fascinating, many of us cannot possibly install the necessary equipment to practice it.

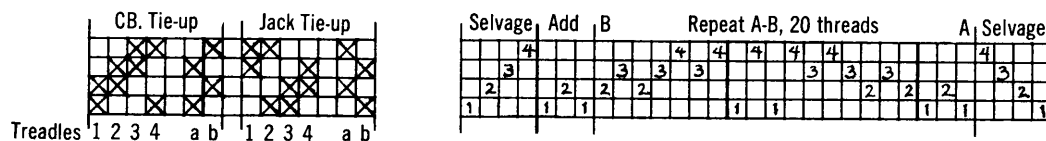
Secondly, while the design of the Greek shifts and dresses is so very simple, their charm lies in the little color suggestions and accents that the weavers work into their textures, like the red and the brown pull-overs. With a table of odds and ends of yarn we can do the same, laying these in or using small pattern shots against our chosen background.

Third, they are sensitive to the weights of yarns; their pattern threads are just right to stand out against the finer backgrounds. They also use a basic yarn like 10/2 or Perle 10 for various effects. They take one strand of it for fine pattern, double it for heavier pattern rows like Perle 5, and use three or four strands for very coarse textures like 3/2. The rope girdles they use with their shifts and their bag handles, as the chartreuse shift and bag, are made in the same way, with clumps of many fine strands of the cotton they used for the dress or have in stock at the time. We can do the same; some of us cannot afford to keep a great number of various weights on hand, so we can buy a bulk amount of one yarn and use it for many purposes. However the pattern accents that are so charming in shifts and pull-overs require very little yarn. Small left-over portions of Perle 3, Perle 5 and soft floss are handy to use and gratifying in effect. The Greeks use pattern floss, exactly the same as our floss, to enhance their touches of design. It was used for the Diamond pattern in the orange shift.

We will give directions for the garments featured in this bulletin and hope that from these our readers will experience a weaver's delight in originating some refreshing accents to add to their own wardrobes. The same black or white 20/2 warp and the same Diamond draft can be used for all of these items, except the shift with Greek Key border which is laid-in. These basic warps can become the foundation for any desired all-over fabric color.

## Draft for Diamond Pattern

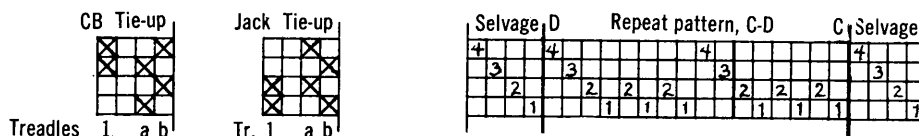
Used for Burnt Orange Shift, Bright Red Pull-over and Wool Pull-over.



**Note:** The treadling given in these directions is for a Counterbalanced Loom. If using tie-up for either Jack or C B looms, weave as follows: For Hs. 1-2 in directions, substitute Tr. 1; for 2-3, Tr. 2; for 3-4, Tr. 3; and for 4-1, Tr. 4. Tabby is Trs. a and b.

## Draft for Chartreuse Shift and Bag

with Laid-in Border Design in Greek Key Motif.



## SHIFT IN BURNT ORANGE WITH BLACK AND WHITE BORDER

Shown on Cover at Right

This burnt orange shift with border in black and white floss is charming on two counts, unusual coloring and asymmetrical design. Moreover the background color has a changeable silky look because the warp is 20/2 black and the tabby weft is silky orange, Perle 10. Black warps are used quite a bit among the Greek weavers; they give a certain depth to the color tone. The same weft color has two quite different effects when used over white and black warps, so one can obtain variety of color shading by choice of warp.

The shift is woven on a wide loom, 42 inches to 54 inches wide, wide enough to make the length of the shift, for the two woven panels are turned so that the border becomes vertical. Shifts with wide borders placed at the center front are also used a great deal; in this case a narrower border is woven for the back. The Diamond pattern is the most popular, for it can be varied in many ways. However, any of the short overshot patterns would be suitable, — Ancient Rose, King's Flower, Remembrance, Poinsettia, etc. (See Handweaver's Pattern Book by Davison and Bertha Hayes Pattern Book by Osma Tod.)

**WARP:** Lily Art. 314, Unmercerized Cotton, size 20/2 Black.

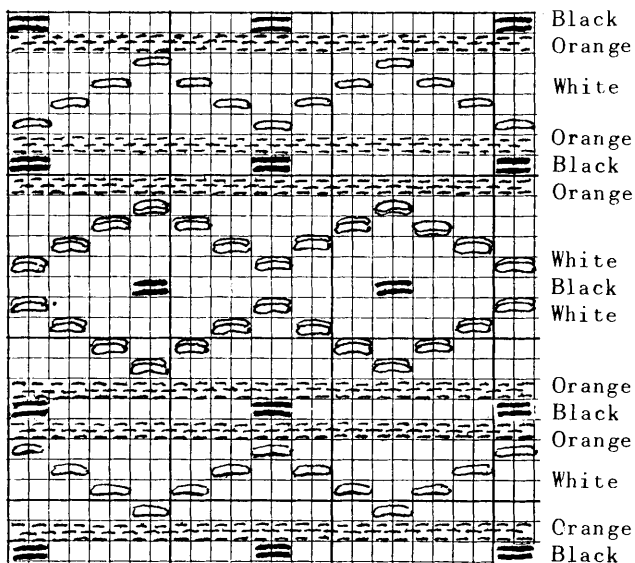
**WEFT PATTERN:** Lily Art. 114, Six Strand Floss White, No. 248, and Black, No. 244.

**WEFT TABBY:** Lily Art. 114, Mercerized Perle 10, Dark Orange 1261.

**SETTING:** 36 per inch, 2 per dent in 18-dent reed, or 3 per dent in 12-dent.

### DRAFT:

Thread Selvage, then repeat A-B as desired. After last repeat add Hs. 1, 2, 1, at left, then left selvage.



### WEAVING PLAN:

Weave two lengths, long enough to cover width of front and back pieces for wearer, since this material will be turned sideways. Weave border as follows: use Floss double for outstanding effect. Follow each pattern row with Tabby in the Burnt Orange. Weave border about 6 inches from side seam.

### BORDER: Add tabby after each pattern row.

Black Floss, Hs. 1-2, 2 times.  
 Orange Tabby, 5 rows.  
 White Floss, Hs. 4-1, once; 3-4, once; 2-3, once; 1-2, once.  
 \*Orange Tabby, 5 rows.  
 Black, Hs. 1-2, 2 times.  
 Orange Tabby, 5 rows.

### DIAMOND AT CENTER OF BORDER:

White Floss, Hs. 4-1, 2 times; 3-4, 2 times; 2-3, 2 times; 1-2, 2 times.  
 Black: Hs. 4-1, 2 times.  
 White: Hs. 1-2, 2 times; 2-3, 2 times; 3-4, 2 times; 4-1, 2 times.  
 For double Diamond, as shown on shift, repeat from \* to here, then reverse to the beginning of border.

### BELT:

Weave a 1-inch belt;  
 1½ inch Tabby, Orange 10/2  
**Narrow Border:** Black; Hs. 1-2, 2 times  
 5 rows Orange  
 Tabby  
 White: Hs. 4-1, once.  
 Hs. 3-4, once.  
 Hs. 2-3, once.  
 Hs. 1-2, once.  
 Black: Hs. 4-1, 2 times,  
 Center.  
 White: Hs. 1-2, once.  
 Hs. 2-3, once.  
 Hs. 3-4, once.  
 Hs. 4-1, once.  
 5 rows Orange  
 Tabby.  
 Black: Hs. 1-2, 2 times.

## CHARTREUSE SHIFT AND BAG

Shown on Cover at Center

Here is another shift made over a black warp in a bright yellow or chartreuse. The weft is Lily Perle 10, used singly in the shift, double in the bag. The shift is made of two lengths of cloth attached at the shoulders and sides. In this case the Greek Key border is woven separately and applied across the shoulders and around the base of the shift and 8 inches up along the side seams on each side.

The black and gold or chartreuse trimming band is woven in Laid-in and the threading given enables one to make a  $\frac{1}{4}$  inch space for each Laid-in cross of design. There are about 5 crosses of the design per inch. One can also weave a trimming band in overshot, using the Diamond pattern given for the burnt orange shift with border.

**WARP:** Lily Art. 314, Unmercerized Cotton, size 20/2 Black.

**WEFT PATTERN:** Lily Art. 114, Mercerized Perle 10 used double or 5 used single, Black.

**WEFT TABBY:** Lily Art. 114, Mercerized Perle 10, Canary Yellow No. 1459 or Chartreuse 1462.

**SETTING:** 36 per inch, 2 per dent in 18-dent reed, or 3 per dent in 12-dent. One can also set this warp at 30 or 32 per inch.

### WEAVING PLAN: Laid-in Border

Weave  $\frac{1}{2}$  inch Perle 10 Chartreuse to turn under for hem of band.

#### Edge Border:

4 rows ( $\frac{1}{8}$ " )	Black Perle 10, Tabby.
1 row	Chartreuse Perle 10, Tabby.
4 rows	Black Perle 10, Tabby.
1 row	Chartreuse Perle 10, Tabby.
4 rows	Black Perle 10, Tabby.

#### For Laid-in:

Tr. 1 Hs. 3-4 on CB Loom; (1-2 on Jack Loom) Use diagram for pick-up count.

Lay in one row Black Perle double or 5/2 single on Tr. 1.

Follow with one row Chartreuse Tabby, Tr.a.

Lay in second row Black Perle on Tr. 1.

Follow with one row Chartreuse Tabby, Tr.b.

Repeat these 4 rows again, making 4 rows Laid-in plus Tabby for one row of checks.

Complete design thus.

Then reverse the edge border, 4 rows Black, 1 row Chartreuse, etc.

Apply this border to both shift and bag. Such a border can be woven on a small belt loom.

### CHARTREUSE BAG:

The bag measures 12" x 14" when finished. The Greek Key border goes all around outline. A heavy black rope is made for the handle out of the black Perle 10 used in a bunch of strands. One can also use black rug-weave yarn. Add knots of this rope at corners.

For the rope belt, use a bunch of strands of the Perle 10 in either the black or chartreuse. Roll and twist into a rope.

## BLACK AND WHITE SHADED PULL-OVER

Shown on Cover at Left

**WARP:** Lily Art. 314, Unmercerized Cotton, size 20/2, Black or White.

**WEFT:** Lily Art. 314, Unmercerized Cotton two threads of Black and White, size 10/2, combined as one. (For finer texture, use two strands size 20/2.)

**SETTING:** 24 per inch. 2 per dent in 12-dent reed.

**THREADING:** Any draft to produce plain weave.

**WEAVING:** Weave as plain weave only.

One of the easiest ways in which a weaver can get a textural look to a fabric is to wind two colors together on the bobbin and weave them as one. The result is a mottled tone, a blend of both shades. The Greeks use this effect a great deal especially when progressing from one colored band to another, in which case they use a blend of both colors between them. However, in doing this one must be sure to make each thread of the combined yarn half the weight of the final size desired. Also wind the threads closely together to prevent different lengths.

This black and white pull-over is simple yet stunning with its convenient pockets and pretty fringes in black and white. It is easy to weave since one weaves the entire blouse with tabby, yet one gets a two-color effect. Any two contrasting colors can be used. Simply weave enough material 24 inches wide to make a front and back panel plus two pockets 6" x 6", or about 2 yds. If sleeves are desired, 3 yds. The 24-inch width becomes the length of the pull-over, since it is turned sideways so that the textured weft lines run vertically. Fringes are left at base of blouse, ends of sleeves and around neckline which is turned down in a slight curve about 1 inch deep. Set pockets  $\frac{1}{2}$  inch from base and side seams.

**BRIGHT RED PULL-OVER WITH HIT AND MISS BORDERS  
ON A DIAMOND THREADING**

This gay colored pull-over in bright red would delight anyone's heart and brighten up wearing apparel. It is made very simply of two pieces joined at the shoulders and sides. The borders and touches of color accent that appear vertical were woven weft-wise on a 4 — harness loom, then turned to be upright. The pockets go the other way.

One weaves the material right along according to the suggestions given here for border touches, then cuts it for blouse and pockets. The design colors are all of these: white, light green, aqua, navy, yellow, black and even pink. All of these were woven with Perle 10, doubled, but either Floss or Perle 5 would be excellent. Here is a chance to use up one's odds and ends. Use your own colors; follow each single row of pattern with 4 to 6 rows of background tabby, in this case, red.

**WARP:** Lily Art. 314 Unmercerized Cotton, size 20/2, Red 438 or Scarlet 440.

**WEFT TABBY:** Lily Art. 114 Mercerized Pearl, size 20/2, Red 439.

**WEFT PATTERN:** Any desired colors of Lily Art. 114, 10/2 double; or Perle 5 or Floss.

**THREADS PER INCH:** 36.

**WIDTH OF WARP:** 22" to 24". This becomes length of pull-over.

**POCKETS:** 6 inch square, attached ½ inch from side seam and base.

**THREADING:** Diamond, same as for Orange Shift; or any short overshot draft.

**WEAVING PLAN:**

1 inch plain red tabby (At start add ½ inch more for side seam).		1 row Green pattern	Hs. 1-2
1 row yellow floss or 5/2 or 10/2 double namely your pattern thread.		4 rows Tabby	
4 rows Red Tabby		1 row Aqua pattern	Hs. 2-3
1 row Red pattern, a lighter Red, Hs. 1-2		6 rows Tabby	
4 rows Tabby		1 row Black pattern	Hs. 1-2
1 row light Red pattern or Pink, Hs. 2-3		4 rows Tabby	
6 rows Tabby		1 row Black pattern	Hs. 2-3
1 row navy pattern, Hs. 1-2		4 rows Tabby	
12 rows Tabby		1 row Black pattern	Hs. 2-3
1 row Green pattern, Hs. 4-1		4 rows Tabby	
12 rows Tabby		1 row Black pattern	Hs. 3-4
1 row Pale Blue pattern, Hs. 4-1		4 rows Tabby	
12 rows Tabby		1 row Light Red pattern	Hs. 2-3
1 row White pattern, Hs. 3-4		8 rows Tabby	
6 rows Tabby		1 row Black pattern 1-2	Hs. 1-2
1 row Yellow pattern, Hs. 4-1		4 rows Tabby	
6 rows Tabby		3 rows 10/2 Yellow Tabby for accent	
1 row Navy pattern, Hs. 4-1		2 rows Red Tabby	
4 rows Tabby		4 pattern rows Aqua followed by single Red Tabbies. Hs. 1-2; 2-3; 3-4; 4-1	
1 row Red pattern, or Pink, Hs. 4-1		1 inch Red Tabby	
6 rows Tabby		White Floss pattern border, each row followed by Red Tabby:	

Hs. 1-2, 2 times  
Hs. 2-3, 2 times  
Hs. 3-4, 12 times  
Hs. 2-3, 2 times  
Hs. 1-2, 2 times

End with 1 inch red tabby; then repeat entire pattern from start. Keep repeating until you have length required for two panels and two pockets.



## WOOL PULL-OVER IN BROWN, BLUE AND BLACK

The texture of the pull-over is soft and lovely to the touch, and not too expensive to reproduce for the warp is white cotton. The clever thing about its weaving is the fact that Weaving Wool is used singly for the tabby weft, and double for the pattern. This also economizes in the use of yarn.

**WARP:** Lily Art. 314, Mercerized Cotton, size 20/2, White or Natural.

**WEFT:** Lily Art. 110, Weaving Wool, Tabby: Medium Brown 120 and Baby Blue 23, Pattern: Baby Blue 23, Medium Brown 120 and Black, used double.

**REED:** 12 dent, 2 per dent, 24 threads per inch, width in reed 24".

**THREADING:** Diamond, same as for Orange Shift with Side Border.

### WEAVING PLAN:

Weave two strips 24" x 26" for back and front .....	52"
Weave two sleeves, 12" x 16" (16" x 24", cut in half) .....	16"
Weave two pockets, 5" x 6" (6" x 24" cut as needed) .....	6"

Total to weave: 74"

**Pattern:** Start at seam. Weave brown, 5" tabby.

**Border 1.** Follow each row with brown tabby. For pattern threads always use the brown, blue and black wool double.

Hs. 1-2, 2 times, black, double.

2 rows brown tabby, single.

2 rows blue tabby, single.

2 rows brown tabby.

4 rows blue tabby.

\*Hs. 1-2, once, black

2 rows blue tabby.

Hs. 4-1, once, black.

2 rows blue tabby.

Repeat from \* 3 times.

4 rows blue tabby.

2 rows brown tabby

2 rows blue tabby.

2 rows brown tabby.

Hs. 1-2, 2 times, black.



**Border 2.** Narrow border: blue and black double with brown tabby.

1 1/4 in. brown tabby.

Hs. 2-3, blue.

2 rows brown tabby.

Hs. 2-3, blue.

4 rows brown tabby.

Hs. 2-3, black

2 rows brown tabby.

Hs. 2-3, blue.

2 rows brown tabby.

Hs. 2-3, black.

4 rows brown tabby.

Hs. 2-3, blue, 2 rows brown tabby.

2 rows brown tabby.

Hs. 2-3, blue.

1 1/2 in. brown tabby.

**Border 3.** Wide Border: Center front and back. Blue and black.

Hs. 4-1; 1-2; 2-3; 3-4, blue double, each row followed by brown tabby.

2 rows brown tabby.

\*Hs. 3-4, blue followed by 2 rows brown tabby.

Hs. 3-4, black followed by 2 rows brown tabby.

Repeat from \* 3 times.

Add Hs. 3-4, blue, then 2 rows brown tabby.

2 rows blue tabby.

2 rows brown tabby.

1/2 in. blue tabby.

Hs. 1-2, black, then 2 rows blue tabby.

Repeat this black with 2 blue, 3 times.

1/2 in. blue tabby.

2 rows brown tabby.

2 rows blue tabby.

2 rows brown tabby.

Hs. 3-4, blue.

2 rows brown tabby.

\*Hs. 3-4, black, then 2 rows brown tabby.

Hs. 3-4, blue, then 2 rows brown tabby.

Repeat from \* 3 times.

Hs. 3-4; 2-3; 1-2; 4-1, once; each row followed by brown tabby.

Border 3 is center of design. Reverse from here to 1 1/2" brown tabby, then border 2; then 1 1/4" brown tabby; Border 1; and end with 6" brown tabby.

*The Handweavers Headquarters*

**LILY MILLS COMPANY • Shelby, N. C.**