

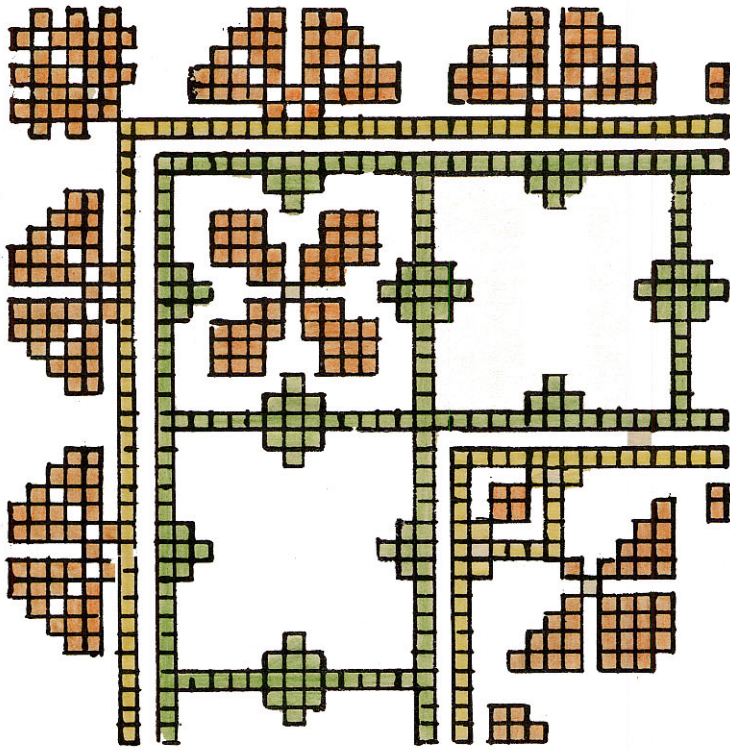
T H E   W E A V E R ' S   Q U A R T E R L Y

Kate Van Cleve

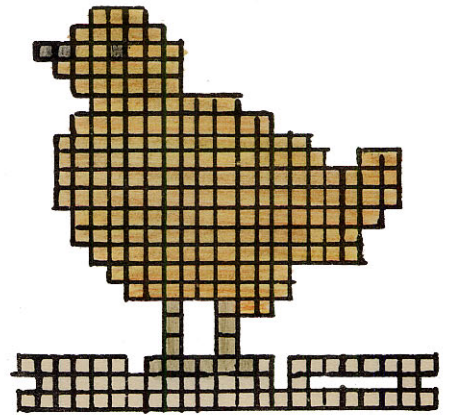
Volume 3    Number 3

July 1937

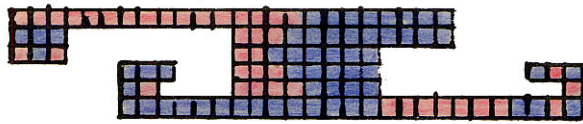
Copyright  
1937  
Kate Van Cleve



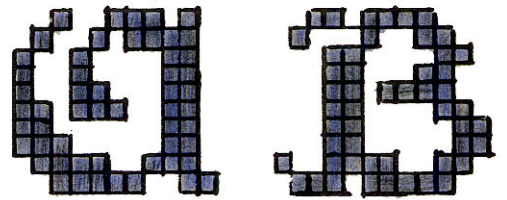
1



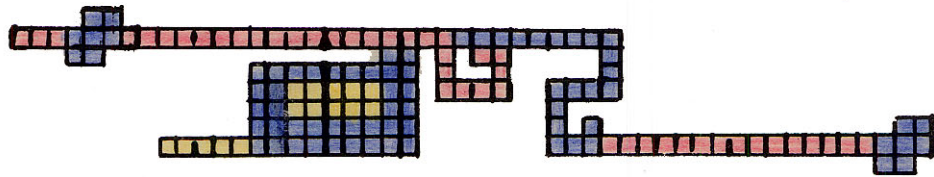
2



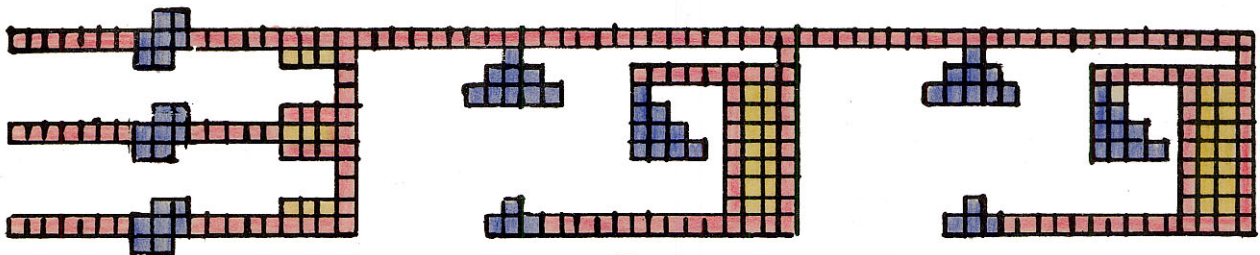
3



6



4



5

## EMBROIDERY WEAVES

For those who have subscribed recently, you will find the Swedish Embroidery Weave directions in the October 1932 issue. The directions for the French Embroidery Weave is in the April 1933 quarterly and the directions for the Laid-In Weave with illustrations in the January 1935 quarterly.

The remaining copies of the early issues of "The Weavers' Quarterly" have now been put together by the year and are priced as follows:

The few copies of October 1932	\$1.00 each
The Complete issue of 1933	2.50
The Complete issue of 1934	2.50
The Complete issue of 1935	2.50
The Complete issue of 1936	2.50

No. I. This design works out effectively for a table cover in French Embroidery Weave. Plan your spacing very accurately as the beauty of this design is lost if the squares do not come out perfectly square.

No. II. As several have requested the chicken given in the July 1935 quarterly repeated facing the opposite direction, I am including it this July. The pair may be used in soft yellow angora in white baby blankets using the laid-in weave. White angora may be used in the same way in pink or blue blankets. For tray cloths or bibs use the Swedish Embroidery Weave.

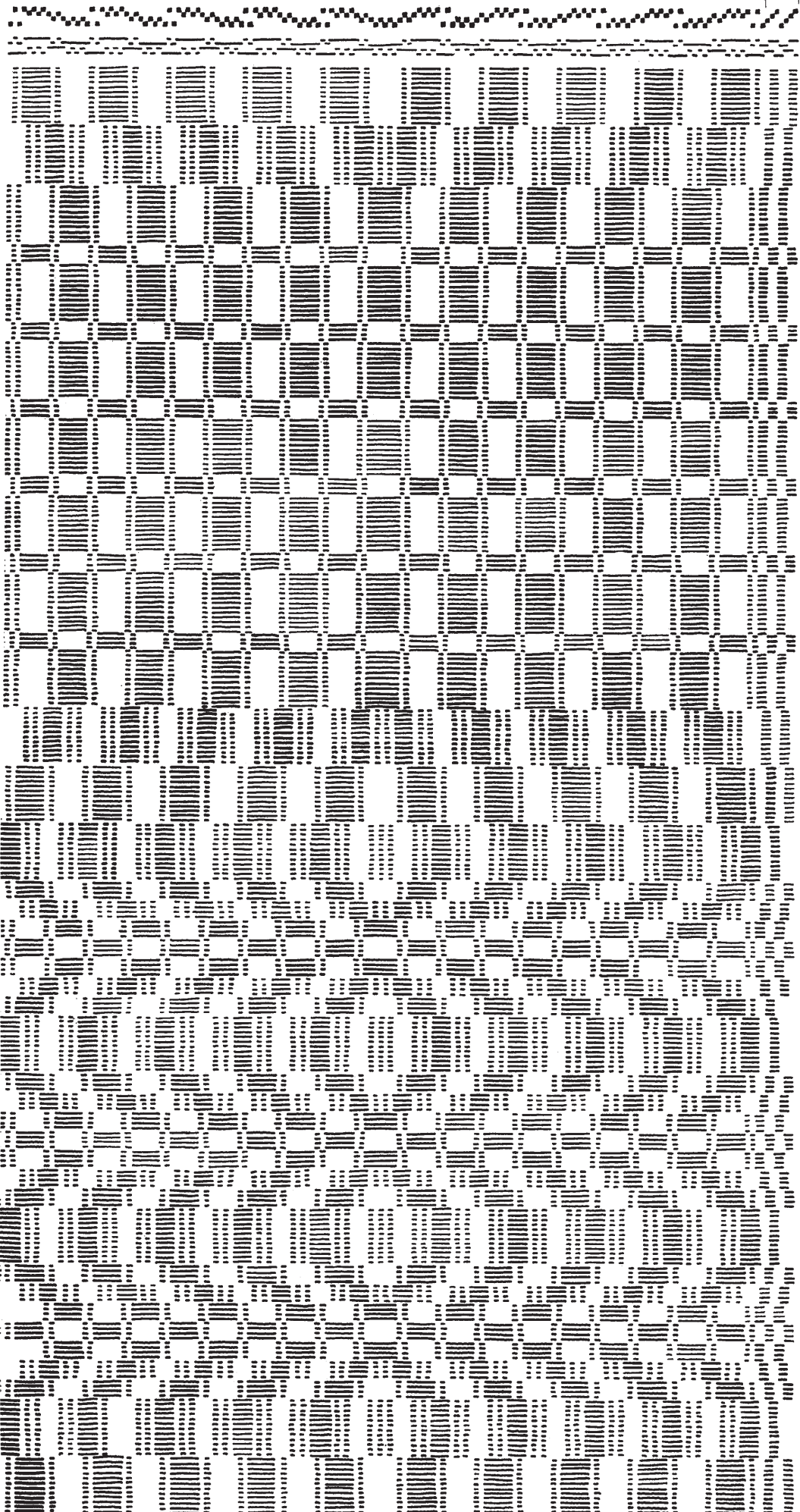
Nos. III, IV, V. These Indian designs may be used in either Swedish or French Embroidery Weave. For a design on a zipper purse, No. 3 placed in the lower right corner  $\frac{3}{4}$  of an inch in from the right and one inch up from the bottom, use the French Embroidery Weave. Use No. 4 repeated for a border in the ends of a bureau scarf for a boy's room in Swedish Embroidery Weave. Use No. 5 for the edge of sash curtains for the same room repeated leaving about  $\frac{1}{2}$ " space between the figures.

No. VI. This is the beginning of an alphabet for marking towels and other linens using the French Embroidery Weave. Both sides are alike in this weave so it is very practical for this purpose.

8'

BORDER

EDGE



TREADLE LOOM	TABLE LOOM
2/4 2/34	1/324 1/243

12(3-4) 12(1-2) DARK BLUE

12(2-3) 12(1-4) ROSE

12(1-2) 12(3-4) ROSE

4(3-4) 4(1-2) DARK BLUE

12(1-2) 12(3-4) ROSE

4(3-4) 4(1-2) DARK BLUE

12(1-2) 12(3-4) ROSE

4(3-4) 4(1-2) DARK BLUE

12(1-2) 12(3-4) ROSE

4(3-4) 4(1-2) DARK BLUE

12(1-2) 12(3-4) ROSE

4(3-4) 4(1-2) DARK BLUE

12(1-2) 12(3-4) ROSE

4(3-4) 4(1-2) DARK BLUE

12(1-2) 12(3-4) ROSE

12(2-3) 12(1-4) ROSE

12(3-4) 12(1-2) DARK BLUE

12(1-4) 12(2-3) DARK BLUE

4(3-4) 4(1-2) "

4(2-3) 4(1-4) "

4(1-2) 4(3-4) "

4(3-4) 4(1-2) "

4(1-2) 4(3-4) "

4(2-3) 4(1-4) "

4(3-4) 4(1-2) "

12(-4) 12(2-3) "

4(3-4) 4(1-2) "

4(2-3) 4(1-4) "

4(1-2) 4(3-4) "

4(3-4) 4(1-2) "

4(1-2) 4(3-4) "

4(2-3) 4(1-4) "

4(3-4) 4(1-2) "

12(1-4) 12(2-3) "

4(3-4) 4(1-2) "

4(2-3) 4(1-4) "

4(1-2) 4(3-4) "

4(3-4) 4(1-2) "

4(1-2) 4(3-4) "

4(2-3) 4(1-4) "

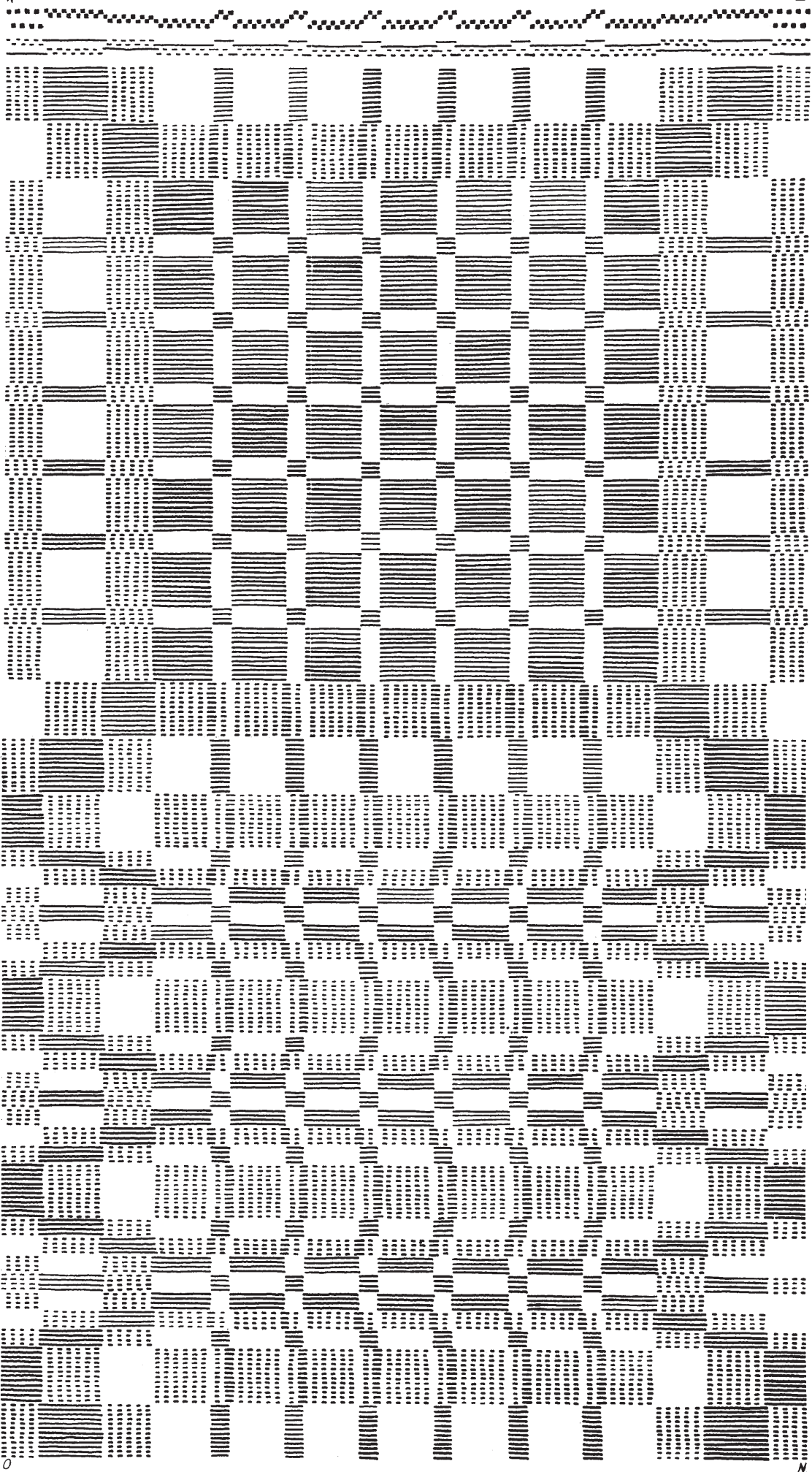
4(3-4) 4(1-2) "

12(1-4) 12(2-3) "

12(3-4) 12(1-2) "

N







13-4  
12-3

12(3-4) 12(1-2)

12(2-3) 12(1-4)

12(1-2) 12(3-4)

4(3-4) 4(1-2)

12(1-2) 12(3-4)

4(3-4) 4(1-2)

12(1-2) 12(3-4)

4(3-4) 4(1-2)

12(1-2) 12(3-4)

4(3-4) 4(1-2)

12(1-2) 12(3-4)

4(3-4) 4(1-2)

12(1-2) 12(3-4)

4(3-4) 4(1-2)

12(1-2) 12(3-4)

12(2-3) 12(1-4)

12(3-4) 12(1-2)

12(1-4) 12(2-3)

4(3-4) 4(1-2)

4(2-3) 4(1-4)

4(1-2) 4(3-4)

4(3-4) 4(1-2)

4(1-2) 4(3-4)

4(2-3) 4(1-4)

4(3-4) 4(1-2)

12(1-4) 12(2-3)

4(3-4) 4(1-2)

4(2-3) 4(1-4)

4(1-2) 4(3-4)

4(3-4) 4(1-2)

4(1-2) 4(3-4)

4(3-4) 4(1-2)

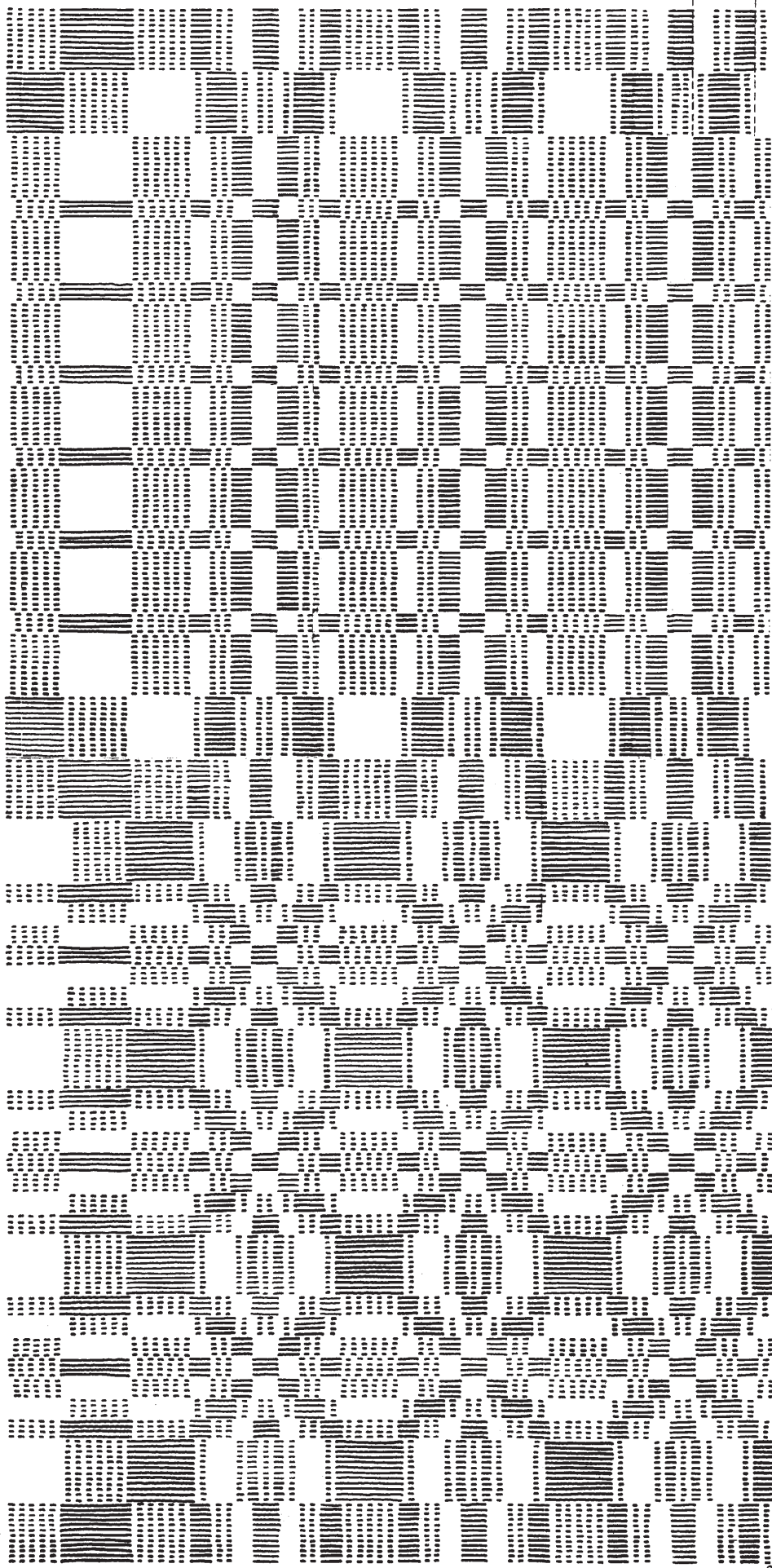
4(1-2) 4(3-4)

4(2-3) 4(1-4)

4(3-4) 4(1-2)

2(1-4) 12(2-3)

12(3-4) 12(1-2)



## MORNING STAR COVERLET PATTERN USED FOR DRAPERIES

This draft was taken from a lovely old coverlet, of the above name, woven in the south near Richmond, Virginia before the Civil War. It is a soft tone of rose with the dark indigo blue as suggested in the draft. In weaving drapery for a doorway, a border on each edge is best.

Materials:- Warp Natural 14/2 in mercerized cotton  
2 lbs. or Egyptian cotton 1½ lbs.

Weft 4 lbs. Homespun  
Rose--Bernat's Homespun #564 or Fabri  
in the same number  
Dark Blue - S. Mazer & Co.  
Homespun #128 or Weaving Special #128

Warping:- 1081 threads 8 yards long.

Threading:- Edge 4-3-2-1 4-3-2 (Double the first two threads 4 and 3) Use a 15 dent reed sleyed 2 threads in each dent.  
Border 157 threads A through B  
Two repeats of pattern 576 threads B through D.  
The square table to finish pattern B through K, is 173 threads.  
Border 157 threads B' to A.  
Edge 2-3-4, 1-2-3-4 (Double the last two threads 3 and 4).

Weaving:- Weave three inches of plain weaving in dark blue for hem. Begin pattern with 3-4 at what will be the lower right corner and follow the diagonal, squaring each overshoot on the diagonal; through the border threading only. Then start with the treading as given on the draft, reading from the top down.

## Morning Star Pattern Used For A Coverlet

Two tones of one color may be used in place of contrasting colors.

Materials:- 14/2 mercerized warp 2 lbs.  
4 lbs. Homespun Fabri or Weaving Special depending upon the weight and type of coverlet desired.



Warp 1096 threads, 8 yards long, 15 dent reed  
sleyed 2 threads to each dent.

Note:- If using No. 10 mercerized cotton and  
homespun use a 12 dent reed with 2 threads to  
a dent.

Threading: Edge 4-3-2-1 4-3-2 (Double the first two  
threads 4 and 3) 10 threads.

Border--	2 repeats of A through X	128	threads
	Center of Border X to Y	29	"
	8 repeats of X to A	128	"
Center--	2 repeats of pattern	576	"
	Table of pattern	173	"
	To center of other unit	58	"

Weaving:- Begin with 3-4 at right corner of border,  
follow the diagonal as in drapery through the border pattern,  
squaring each overshoot as it becomes the overshoot on the diagonal.  
Start center pattern with the treading as given on draft. The  
treading is repeated at the left of draft for the convenience of  
any wanting to use the pattern without the border.

## BORDERS

For our second border one unit of pattern marked M in threading on draft of this coverlet was taken and repeated over and over leaving a space of 6 threads between each repeat. In this case 8 repeats were used for the border besides the center group. You will always need to use an odd number of warp threads for the center space in order to have the border balance. This makes a border about ten inches wide which is wide enough for most beds.

A border should be planned so as to come on the side of the bed. The proper width should be decided on after studying the best proportions for each individual bed. A general rule for a border is from 10 to 15 inches for coverlets.

## Materials

Instead of the discussion of materials in the July quarterly, I am enclosing a copy of the Record Sheets just issued. This with a mounted sample of each new pattern should make a most valuable book for every weaver. You would always have all the data needed if a repeat order comes in several years after the first article was made or if you want to replace a lost or worn-out article made for yourself or home.

Weavers Record Sheets

20¢ per dozen  
\$1.50 per hundred

Weavers Record Sheet

No.

For

Name of Weaver

70	60	50	40	30	20	10	
150	140	130	120	110	100	90	80
230	220	210	200	190	180	170	160
310	300	290	280	270	260	250	240
390	380	370	360	350	340	330	320

I Loom

Table  
Treadle

Reed  
Tie Up

II Materials--Warp  
Weft

Yards  
Where Purchased  
Where Purchased

Ends per inch  
Price  
Price

III Draft---From

Original

IV Labor

Warping  
Weaving  
Finishing

Hours  
Hours  
Hours

V Shrinkage Record----Width on Loom

Width off Loom  
Width after Washing

Length on Loom  
Length off Loom  
Length after Washing

VI Cost----Warp

Weft  
Labor  
Overhead

Commission if sold at outside shop

VII Total Selling Price