

WARP & WEFT

VOLUME IV

NUMBER 6

APRIL, 1951

THE WEAVING BOND TRANSCENDS DISTANCE BETWEEN NEW NAMES & FAR PLACES

NOTICE-----IMPORTANT-----NOTICE

NEW TRAVELING EXHIBIT

HERE IS YOUR CHANCE TO SAVE SOME MONEY. DUE TO THE GREAT ADVANCE IN COSTS OF PAPER, INK, ENVELOPES, ETC. WE ARE FORCED RELUCTANTLY TO RAISE THE PRICE OF WARP & WEFT. WE ARE KEEPING THE PRICE RISE AS SMALL AS POSSIBLE. THE NEW PRICE WILL BE \$2. PER YEAR. BECAUSE WE DO THIS WITH SINCERE REGRET, WE ARE GIVING OUR PRESENT READERS THE OPPORTUNITY TO RENEW THEIR SUBSCRIPTIONS FOR AN ADDITIONAL YEAR, REGARDLESS OF THE PRESENT EXPIRATION DATE. ALL NEW SUBSCRIPTIONS AND RENEWALS RECEIVED AFTER JUNE 1 WILL BE ACCEPTED AT THE NEW PRICE.

WARP & WEFT, EVEN WITH THIS PRICE RISE, IS THE LEAST EXPENSIVE WEAVING MAGAZINE ON THE MARKET. AS FAR AS WE KNOW, IT IS THE ONLY ONE WHICH INCLUDES AN ORIGINAL SAMPLE WITH DIRECTIONS IN EVERY ISSUE. READERS EVERYWHERE TELL US THAT IT IS THE MOST EASILY UNDERSTOOD, MOST COMPLETE AND SATISFACTORY WEAVERS' PUBLICATION. IT IS THE MAGAZINE WHICH GIVES THE MOST HELP AND ENCOURAGEMENT IN CREATIVE WEAVING. WE HAVE MANY INTERESTING PROJECTS PLANNED FOR THE NEAR FUTURE, SO TAKE ADVANTAGE OF THIS MONEY SAVING OFFER. THERE'S A CONVENIENT BLANK ON P.8. CUT IT OUT!

THE CHICAGO WEAVERS GUILD ANNOUNCES THROUGH ITS PROJECT CHAIRMAN, MRS. WILLIAM JENNINGS THAT IT NOW HAS READY A TRAVELING EXHIBIT. IT INCLUDES ARTICLES WOVEN BY MEMBERS, SOME OF WHICH WERE SHOWN LAST YEAR AT THE ART INSTITUTE OF CHICAGO. AN EXPLANATION OF MATERIALS AND TECHNIQUES USED WILL ACCOMPANY THE ARTICLES, WHICH WILL BE PACKED IN A CASE ABOUT THE SIZE OF A STEAMER TRUNK. THE PLAN IS THAT THE CHICAGO GUILD WILL PAY THE OUT-GOING FREIGHT CHARGES AND THE PARTICIPATING GUILD, THE RETURN FEES, WITH EXCHANGE EXHIBITS HANDLED SIMILARLY. CONTACT WITH OTHER WEAVERS IS A GREAT STIMULUS. IF YOUR GROUP WOULD LIKE TO PARTICIPATE IN THIS PLAN, CONTACT MRS. WILLIAM JENNINGS, 3118 WENONAH AVE., BERWYN, ILLINOIS.

* * * * *

THE TWIN CITY WEAVERS GUILD (MINNEAPOLIS & ST. PAUL, MINN.) ANNOUNCES THAT IT HAS BEEN INVITED TO PARTICIPATE IN THE NORTHWEST BUILDERS SHOW AT THE CITY AUDITORIUM, APR. 14-22. THERE WILL BE ABOUT A DOZEN LOOMS SET UP, DEMONSTRATION WEAVING, & AN EXHIBIT. THIS IS AN ACTIVE GUILD; DON'T MISS THIS SHOW.

WARP & WEFT IS PUBLISHED MONTHLY BY THE NORWOOD LOOM COMPANY, 1386 NORTH MILWAUKEE AVENUE, CHICAGO 22 ILLINOIS. SINGLE COPIES & BACK ISSUES 20 CENTS EACH. YEARLY SUBSCRIPTIONS, \$2.00

MORE ABOUT OUR SAMPLE

WE ARE SUGGESTING THAT YOU USE THIS MONTHS' SAMPLE FOR TWO PROJECTS--AN ENSEMBLE. THE POPULARITY OF STOLES CONTINUES, AND WITH SUMMER COMING A STOLE SHOULD BE A PLEASANT ADDITION TO THE WARDROBE, FOR PROTECTION FROM THE SUN DURING THE DAY AS WELL AS CHILL EVENING BREEZES. FOR THE OTHER HALF OF OUR ENSEMBLE WE SUGGEST A TOTE BAG. WE THINK YOU'D LIKE IT VERY LARGE TO CARRY THINGS WHILE SHOPPING, OR KNITTING, BOOK, AND LOTION AT THE BEACH. BEST OF ALL, WHY NOT LINE IT WITH WATERPROOF MATERIAL, SO YOU CAN PUT WET BATHING SUITS AND TOWELS (OR EVEN DIAPERS) IN IT. YOU'LL GET LOTS OF USE FROM SUCH A COMBINATION.

FOR THE STOLE, A LENGTH OF TWO YARDS WILL MAKE IT LONG ENOUGH TO GO AROUND THE NECK AND EXTEND BELOW THE WAIST. IF YOU PLAN TO USE IT FOR DRESS WEAR, YOU MAY WANT TO MAKE IT LONGER. THE WIDTH IS OPTIONAL; THE BAG REQUIRES A 28" WARP AND THAT WOULD DO WELL FOR THE STOLE, TOO. AN ATTRACTIVE END FINISH IS TO TIE FRINGE OF 5 OR 6 INCHES OF OPEN WARP. ANOTHER GOOD PLAN IS TO CUT PIECES OF THE WEFT, PULL THEM THROUGH THE HEMMED ENDS OF THE STOLE, AND TIE THEM IN FRINGE. THE LATTER WILL PROBABLY BE MORE ATTRACTIVE UNLESS THE WARP IS ESPECIALLY INTERESTING.

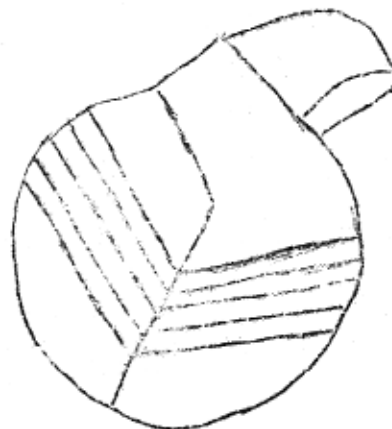
YOU MIGHT WEAVE THE WHOLE STOLE IN THE PATTERN, OR YOU MIGHT PREFER TO PATTERN JUST THE ENDS, AND MAKE ENOUGH EXTRA LENGTH TO TURN UP INTO LARGE POCKETS, WITH OR WITHOUT FRINGE. REMEMBER, STOLES HAVE NO AGE LIMIT, THEY'RE FUN TO WEAR AND CHARMING TO SEE--AND QUICK AND EASY TO MAKE! PLAN TO START YOURS NOW SO YOU CAN GET TO WEARING IT SOON.

THE TOTE BAG

A SKETCH FOR THE CUTTING OF THIS BAG IS ON PAGE 4, WHILE THE SKETCH BELOW SHOWS THE FINISHED BAG. EACH SQUARE IN THE PATTERN REPRESENTS 2" SO YOU CAN ENLARGE IT YOURSELF TO GET THE CORRECT SIZE. THE ENTIRE BAG TAKES A PIECE 52" LONG AND 20" WIDE, AND THE STRIPES MUST BE SYMMETRICAL (BOTH SIDES THE SAME FROM THE CENTER) AND BOTH STRIPES MUST BE THE SAME.

TO MAKE THE BAG:

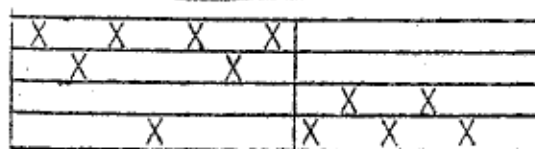
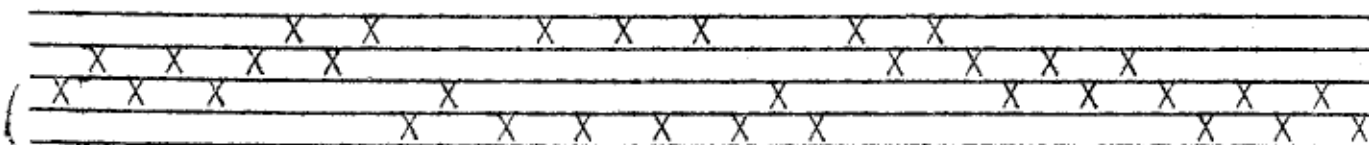
- 1-CUT THE PATTERN FROM YOUR WOVEN MATERIAL, HAVING THE DESIGN STRIPES IN THE CORRECT LOCATION. CUT THE SAME PIECES FROM MUSLIN OR CRINOLINE INTERLINING, AND FROM THE LINING MATERIAL, EITHER WATERPROOF OR PLAIN.
- 2-SEAM SECTION 1A TO SECTION 2A MATCHING THE STRIPES.
- 3- MATCH AND SEAM SECTION 1B TO SECTION 2B
- 4-BIND OR OVERCAST SEAMS.
- 5-SEAM HANDLES, 1A TO 1B AND 2A TO 2B.
- 6- SEAM EDGES OF BAG, LEAVING HANDLE LOOPS OPEN ABOVE STRIPES.
- 7- MAKE LINING & INTERLINING THE SAME WAY, ADDING POCKETS TO LINING IF DESIRED.
- 8- PLACE LINING & INTERLINING IN BAG WHICH HAS BEEN TURNED RIGHT SIDE OUT. TURN IN EDGES OF HANDLES, BASTE TOGETHER, AND CAREFULLY SLIP STITCH. PULL THE LONG LOOP THROUGH THE SHORTER ONE TO CLOSE BAG AND FORM A HANDLE TO CARRY OVER ARM.



CLEMATIS ENSEMBLE

IT'S A VERY LONG TIME SINCE WE HAVE HAD AN OVERSHOT DESIGN FOR YOU, SO WE WERE DELIGHTED RECENTLY WHEN MRS. MOLLY GREW OF BIRMINGHAM, ENGLAND, SENT THIS TO BE SHARED WITH OUR READERS. WE THINK IT ESPECIALLY ATTRACTIVE AND SOMEWHAT UNUSUAL, AND HAVE NOT FOUND IT IN ANY OF OUR MANY PATTERN BOOKS.

THREADING DRAFT:



BALANCE

TIE-UP

0	0	X	X	X	0	4 3 2 1
0	X	X	0	0	X	
X	X	0	0	X	0	
X	0	0	X	0	X	
1	2	3	4	A	B	

WARP:

TAN CARPET WARP, SET 15 PER INCH

WEFT:

PATTERN WEFT IS KNITTING WORSTED TABBY IS CONTRASTING TONE OF VERY FINE COTTON. IF DESIRED, SEWING THREAD MIGHT BE USED.

BEAT:

THE SAMPLE WAS MADE USING A FORCEFUL, SINGLE BEAT, HOLDING THE BEATER FORWARD WHILE THE SHED WAS BEING CHANGED. THIS KEEPS THE WORK SMOOTH AND AIDS IN PREVENTING PULLED IN EDGES.

MRS. GREW'S ORIGINAL SAMPLE WAS MADE ON A COTTON WARP APPROXIMATELY SIZE 10/3. HER WEFT WAS SINGLE PLY COTTON, DIFFERENT FROM ANYTHING IN GENERAL USE HERE. IT WAS NEARLY THE SAME SIZE AS THE WARP THE TABBY WAS THE ONLY MERCERIZED THREAD, AND THE FINEST. WARP & TABBY WERE NATURAL COLOR; PATTERN THREAD, MEDIUM BLUE.

ENTIRE PATTERN--46 THREADS
BALANCE--7 THREADS

TREADLING:	LIKE SAMPLE	LONGER PATTERN
TREADLE	1 - 4 TIMES	6 TIMES
"	1 - 1 "	6 - 1 "
"	2 - 1 "	6 - 2 "
"	3 - 1 "	6 - 3 "
"	4 - 4 "	6 - 4 "
"	1 - 1 "	6 - 5 "
"	2 - 1 "	6 - 6 "
"	1 - 4 "	6 - 6 "

"	3 - 1 "	2 - 1 "
"	4 - 1 "	2 - 2 "
"	3 - 1 "	2 - 2 "

WOVEN WITH TABBY

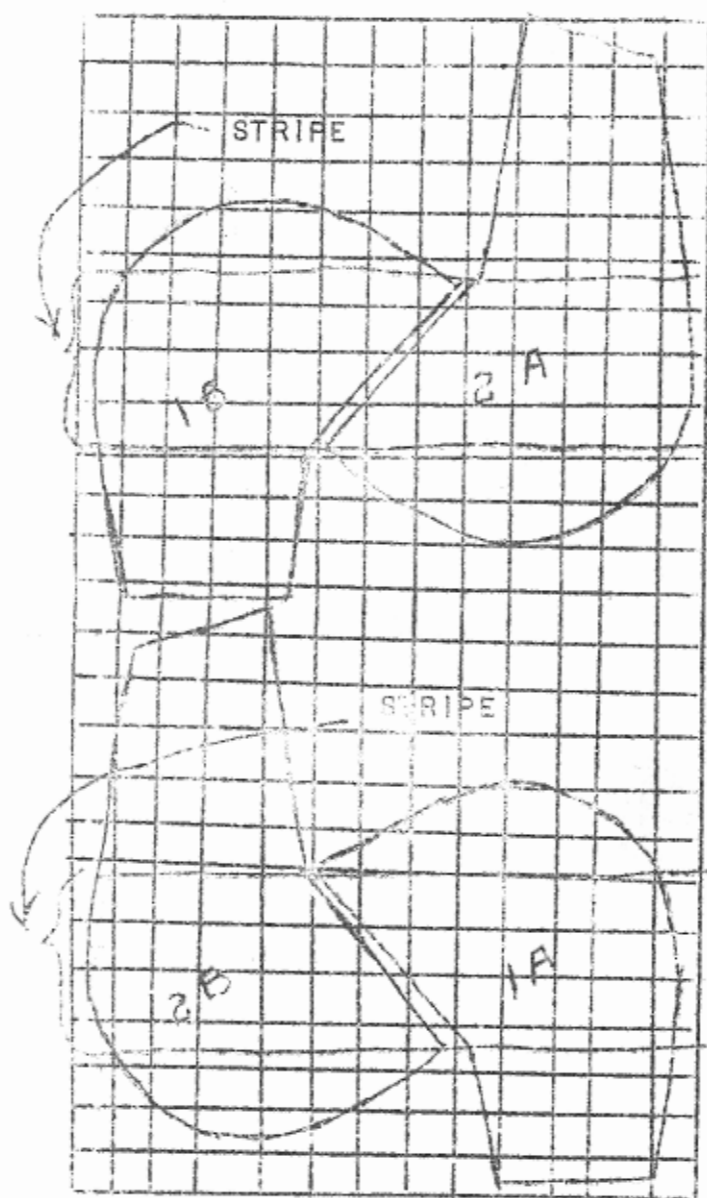
NOTE: THE TREADLING BELOW THE LINE IS NOT INCLUDED IN THE SAMPLE. HOWEVER, IT IS THE JOINING BETWEEN PATTERNS GIVEN IN THE ORIGINAL.



SISTER GOODWEAVER CAUTIONS
"THE WAY TO BE SURE THERE IS
NOTHING WRONG--IS TO CHECK
EACH STEP AS YOU GO ALONG"

PATTERN FOR TOTE BAG

EACH SQUARE IN THE PATTERN BELOW REPRESENTS 2". WE SUGGEST THAT YOU CUT PLAIN PAPER TO SIZE AND DRAW OUT YOUR ENTIRE PATTERN ON IT BEFORE STARTING TO WEAVE. IN THIS WAY YOU WILL BE CERTAIN TO HAVE THE STRIPES IN YOUR WEAVING COME EXACTLY WHERE YOU NEED THEM TO CUT YOUR BAG CORRECTLY. IN USING THE CLEMATIS PATTERN FOR THIS BAG, YOU MIGHT WEAVE THE BAG HANDLES PLAIN, WITH THE PART MARKED FOR STRIPES IN PATTERN WEAVING, WORN WITH A PLAIN STOLE WITH PATTERNED ENDS. OR YOU MIGHT PREFER THE ENTIRE BAG AND STOLE WOVEN IN DESIGN, WITH THE STRIPE AND STOLE ENDS IN A CONTRASTING COLOR.



ARE YOUR PRODUCTS FOR SALE?

WE OFTEN RECEIVE INQUIRIES FROM OUR READERS REQUESTING HELP IN PLANNING ARTICLES FOR SALE; USUALLY SUCH QUESTIONS AS HOW TO REACH THE CUSTOMER, PLANNING PROJECTS WHICH SELL, PRICE QUOTATIONS, ETC. OUR PROJECTS THIS MONTH ARE THE TYPE WHICH MIGHT APPEAL TO THOSE OF YOU LOOKING FOR NEW, SALEABLE ITEMS. SUMMER IS THE SEASON WHEN MANY OF YOU MAKE YOUR SALES, BUT THERE ARE MANY PROBLEMS. IF ANY OF YOU WOULD CARE TO COMMENT, WE WILL BE GLAD TO DEVOTE FURTHER SPACE TO THIS PROBLEM IN FUTURE ISSUES.

MEANWHILE, HERE IS AN EXERPT FROM AN ARTICLE IN THE "ACCENT ON LIVING" DEPARTMENT OF THE ATLANTIC MONTHLY MAGAZINE FOR DECEMBER, 1950. IT GIVES A BIRD'S EYE VIEW FROM THE CUSTOMER'S SIDE OF THE COUNTER.

"ORGANIZATIONS....COULD ENLARGE THEIR SERVICES HANDSOMELY BY GETTING AFTER SOME OF THE HOMECRAFTS IN RURAL PARTS OF THE COUNTRY AND CANADA, ESPECIALLY THE MARITIME PROVINCES. JARRING COLORS AND BANAL DESIGN TOO OFTEN NULLIFY THE MOST EXQUISITE HANDWORK, AS ANY COUNTRY "EXPOSITION HALL" WILL DEMONSTRATE. AN UGLY HOOKED RUG IS UGLY, IF THAT'S THE WAY IT WORKS OUT, HOWEVER NAIVE OR PAINSTAKING THE CREATOR; AND THERE COMES A POINT AT WHICH LOCAL PRIDE AND SUSPICION OF OUTSIDE ADVICE ARE MORE OF A LUXURY THAN THE CRAFT CAN AFFORD. AT SEVERAL FAIRS OF THE NORTHEAST AND CANADA LAST SUMMER IT WAS SADDENING--AND IRRITATING TO SEE HOW FINE WEAVING AND NEEDLEWORK COULD ACHIEVE SO MANY REPULSIVE OFFERINGS--EFFECTS THAT NOT EVEN "SUMMER PEOPLE" WOULD BUY."

OUR READERS WOULD LIKE TO HEAR YOUR VIEWS ON THIS PROBLEM. HOW HAVE YOU HANDLED IT?

ITALY AT WORK

ONE OF THE OUTSTANDING EXHIBITS OF THE YEAR IS CURRENTLY ON VIEW AT THE ART INSTITUTE OF CHICAGO. THIS SHOW IS A DEMONSTRATION OF THE WORK OF ITALIAN ARTISANS SINCE WORLD WAR II, AND THE BID OF ITALY FOR REACCEPTANCE IN WORLD ART AND INDUSTRY. THERE ARE SEVERAL TYPES OF EXHIBITS, BUT OF COURSE TO THE WEAVER THE TEXTILES WERE THE MOST BEGUILING. STRESS WAS LAID ON SIMPLICITY OF DESIGN, WITH INTEREST IN COLOR AND TEXTURE. PLAIN WEAVES WERE PREDOMINANT BUT NOT UNINTERESTING.

THE SHEER SCARVES MADE IN NARROW WIDTHS ON A FINE WOOL WARP WITH STRAW THREAD WEFT WERE FASCINATING. THE BANDS WERE FASTENED TOGETHER WITH INTRICATE EMBROIDERY, AND THE CORNERS WERE ROUNDED AND FINISHED WITH LONG FRINGES OF THE STRAW YARN.

FEDI CHETI OF MILAN SHOWED SOME LIGHT AIRY CURTAINS, BEAUTIFUL IN THEIR SIMPLICITY. THEY WERE NATURAL COLOR HEMP, SHOWING ABOUT 3" PLAIN UNWOVEN WARP BETWEEN 1½" BANDS OF PLAIN WEAVE. THESE WERE DELIGHTFULLY SHEER. PLAIN WEAVE AND OPEN SPACE WERE EMPLOYED AGAIN IN A CURTAIN OF PASTEL HEMP ON WHITE WARP. PLAIN STRIPES, SEPARATED WITH UNWOVEN SPACES, WERE MARKED WITH OCCASIONAL BANDS OF DANISH LACE FOR AN EXQUISITE EFFECT. THE TRUE "HAND DONE LOOK" WAS APPARENT IN THESE, AS ALL THE BANDS WERE NOT IDENTICAL IN SIZE.

MOST OF THESE FABRICS WERE DESIGNED ON HAND LOOMS FOR MASS PRODUCTION ON POWER LOOMS, AND THE DESIGNERS WISELY RELIED ON COLOR AND SIMPLE TEXTURE EFFECTS FOR INTEREST.

IN SHOWING THIS OUTSTANDING EXHIBIT, THE ART INSTITUTE OF CHICAGO HAS AGAIN SHOWN ITSELF WORTHY OF ITS FINE REPUTATION.

NEW NAMES & FAR PLACES (CONT.)

MANY MIDWEST WEAVERS REMEMBER OLD FRIEND FRANCES THOMPSON WITH AFFECTION. SHE WAS A CHARTER MEMBER OF THE CHICAGO WEAVERS GUILD. SEVERAL YEARS AGO SHE MOVED TO ROCHESTER, VERMONT, WITH HER HUSBAND. DON'T MISS HER PICTURE AT HER LOOM IN THE WOMAN'S HOME COMPANION FOR APRIL. SHE AND HER LOOM WERE PART OF THE "HOME FRONT VICTORY" IN HER NEW HOME. THREE CHEERS!

* * * * *

THE WEAVING CLASS OF HULL HOUSE ART SCHOOL, 800 S. HALSTED ST., CHICAGO, HAD AN EVENING MEETING WITH REFRESHMENTS FOR THE ALUMNI OF THE GROUP ON APRIL 2. MITZI JOYCE WAS CHAIRMAN OF THE EVENING; INSTRUCTOR FOR THE GROUP IS ESTHER WENDEL.

* * * * *

FROM THE BIRMINGHAM, ENGLAND, WEAVERS GUILD WE HAVE THIS REPORT: "WE HAD AN EXHIBITION AT ONE OF THE CITY STORES ABOUT A MONTH AGO. IT WAS A GREAT SUCCESS, AND FROM THAT WE HAVE 45 NEW MEMBERS." A SPUR FOR SOME OF OUR LESS ACTIVE GUILDS!

* * * * *

SYDNEY HARRIS, COLUMNIST OF THE CHICAGO DAILY NEWS, CAME UP WITH THIS INTERESTING SQUIB THE OTHER DAY. "SIR JOHN THROCKMORTON, IN 1811, BET 1000 GUINEAS THAT HE COULD SIT DOWN TO SUPPER IN A COAT THAT HAD BEEN GROWING THAT SAME MORNING ON THE BACK OF HIS SHEEP. AT 6 A.M. THE SHEEP WAS SHORN. THE WOOL WAS SPUN, DYED, WOVEN, & CUT, AND THE ENTIRE COAT PLACED ON HIS BACK BY SEVEN P.M." A BIG JOB FOR THIRTEEN CLOCK HOURS, BUT I WONDER HOW MANY MAN AND WOMAN HOURS WERE INVOLVED. AND COULD ANY OF US DUPLICATE SUCH A FEAT, DO YOU THINK?

RAYONS FOR WEAVING

IN THE NOT TOO DISTANT PAST WE HAVE HAD ARTICLES DISCUSSING THE USE OF COTTONS AND WOOLS FOR WEAVING. IN FEBRUARY, WHEN OUR SAMPLE WAS A PURSE MADE ON A RAYON WARP, WE GAVE A FEW HINTS ON THE HANDLING OF RAYON, BUT THIS MONTH WE WOULD LIKE TO GO INTO THIS MATTER OF WEAVING WITH RAYON IN A LITTLE MORE DETAIL.

MANY PEOPLE HAVE A PRECONCEIVED IDEA ABOUT RAYON FIBERS, BASING THEIR FEELINGS OF DISLIKE ON SOME MACHINE WOVEN FABRICS THEY MAY HAVE SEEN. IN HAND WEAVING, HOWEVER, THERE ARE MANY PLACES WHERE A RAYON THREAD WILL GIVE AN EFFECT NOT POSSIBLE WITH ANY OTHER FIBER.

AS A GENERAL RULE WE DO NOT SUGGEST USING RAYON FOR BOTH WARP & WEFT IN A SINGLE FABRIC, ALTHOUGH THERE ARE EXCEPTIONS TO THIS GENERALIZATION. USUALLY HOWEVER THE APPEARANCE AND WEARING QUALITIES ARE BETTER WHEN RAYON IS COMBINED WITH OTHER FIBERS---COTTON, WOOL, OR LINEN. IT DOES NOT SEEM QUITE FAIR, SOMEHOW, TO COMBINE RAYON WITH SILK. IT IS IN ITSELF TOO BEAUTIFUL, TOO PERFECT, TO BE MIXED WITH A SUBSTITUTE, WHICH OF COURSE WAS THE ORIGINAL INCENTIVE FOR THE INVENTION OF RAYON.

IF YOU ARE INTERESTED IN THE TECHNICAL STEPS OF THE MANUFACTURE OF RAYON, WE SUGGEST LIBRARY RESEARCH. HOWEVER, IN ORDER FOR YOU TO UNDERSTAND THE HANDLING OF THE MATERIAL ITSELF, IT IS NECESSARY TO KNOW THAT RAYON IS A CHEMICAL COMBINATION WHICH, IN A PRELIMINARY STATE, IS LIQUID. IT IS EXTRUDED OR FORCED THROUGH SPINNERETTES OR DIES IN WHICH ARE TINY HOLES. AS THE LIQUID COMES THROUGH THE HOLES IT FALLS INTO A CHEMICAL WHICH HARDENS IT IN THREAD FORM. THE SIZE OF THE THREAD IS LARGELY DETERMINED BY

THE NUMBER OF HOLES IN THE DIE, AND THESE HOLES CORRESPOND TO THE NUMBER OF FILAMENTS IN THE YARN. SEVERAL OF THESE MAY LATER BE TWISTED TOGETHER, AND THEY ARE USUALLY GLOSSY. SPUN RAYON IS MADE BY CUTTING THE FILAMENTS INTO SMALL PIECES AND SPINNING THEM IN MUCH THE SAME WAY OTHER FIBERS ARE SPUN, AND SUCH YARNS ARE USUALLY DULL.

MOST SMOOTH RAYON IS EXTREMELY SPRINGY, WITH LITTLE ELASTICITY, AND HIGH TENSION IS NECESSARY TO CONTROL IT ON THE LOOM. IT TENDS TO SLIP FROM HEDDLE OR REED DURING DRESSING, BUT ONCE THESE STEPS ARE ACCOMPLISHED, IT IS EASY TO USE. THERE ARE FEW BROKEN THREADS, & WORK USUALLY PROGRESSES QUICKLY ON A CORRECTLY DONE RAYON WARP. COVERING ALL KNOTS WITH A BIT OF SCOTCH TAPE IS A SIMPLE PRECAUTION AGAINST SLIPPING. BECAUSE OF ITS INELASTICITY SMOOTH RAYON SHRINKS LESS THAN ALMOST ANY OTHER FIBER; TWO INCHES IN EACH WARP YARD IS AMPLE ALLOWANCE. THE RAYON BOUCLES, OF COURSE, HAVE MORE ELASTICITY AND THEREFORE MORE SHRINKAGE BOTH IN WARP AND WEFT. RAYON ABSORBS DYE BEAUTIFULLY AND IS AVAILABLE IN AN EXCELLENT RANGE OF COLORS.

MANY RAYONS ARE WASHABLE & ARE VERY PRACTICAL FOR USE IN TABLE WEAR OR CLOTHING WHICH MIGHT BE FREQUENTLY LAUNDERED. COLOR SAFETY LIES IN TESTING THE WASHABILITY OF A SAMPLE, HOWEVER.

RAYON MIXES WELL WITH OTHER FIBERS IN BOTH WARP AND WEFT IN MANY COMBINATIONS. OF COURSE, IT'S THE SAME OLD STORY--TO BE SURE YOUR PLANNED DESIGN AND COMBINATION OF FIBERS WILL BE PRACTICAL AND ATTRACTIVE, MAKE A SAMPLE FIRST. SOMETIMES THE MOST EXPERIENCED OF US ARE SURPRISED AT THE RESULTS OF AN EXPERIMENT, YOU, TOO, MAY BE.

BOOKS FOR WEAVERS

WARP & WEFT BRINGS TWO BOOKS TO YOUR ATTENTION THIS MONTH. THE FIRST IS TEXTILE FIBERS BY L. E. PARSONS AND JOHN K. STEARNS. IT IS PUBLISHED BY INTERNATIONAL TEXTBOOK COMPANY, SCRANTON, 9, PENNSYLVANIA, AND IS A BOOK FOR THOSE SEEKERS AFTER KNOWLEDGE RATHER THAN THOSE WHO WEAVE JUST FOR THE FUN OF IT. AS THE PUBLISHERS NAME INDICATES, THIS IS A TEXTBOOK FOR THE STUDY OF FIBER USED IN MAKING TEXTILES. IT IS WELL ASSEMBLED, CLEARLY WRITTEN, AND BOTH ENJOYABLE AND EDUCATIONAL. IT IS DIVIDED INTO FOUR MAJOR DIVISIONS--COTTON, WOOL, MAN-MADE FIBERS, AND YARNS. THE COTTON AND WOOL SECTIONS EXAMINE THE FIBERS THOROUGHLY, DISCUSSING GRADING, MARKETING, ETC. THE SECTION TITLED MAN-MADE FIBERS IS PROBABLY MORE INTERESTING BECAUSE IT IS LESS FAMILIAR. MOST SPACE IS DEVOTED TO ESTRON AND RAYON. THE SECTION ON MECHANICAL METHODS OF SPINNING, SPECIAL YARNS, ETC. IS FASCINATING. THIS BOOK COSTS \$4. AND IS AVAILABLE AT THE NORWOOD LOOM COMPANY, 1386 MILWAUKEE AVENUE, CHICAGO, 22.

ALSO FOR YOUR ATTENTION IS A NEW MIMEOGRAPHED LIST OF SOURCES OF SUPPLIES FOR WEAVERS BY HEATHER G. THORPE, BUFFALO MUSEUM OF SCIENCE, BUFFALO, N.Y. IN THIS LIST MISS THORPE NAMES THE COMPANY, GIVES ITS ADDRESS, AND IDENTIFIES THE GOODS IT DISTRIBUTES. THERE ARE ONE HUNDRED TWENTY NINE LISTINGS, SOME OF THEM NOT WIDELY KNOWN, SO IT IS A HELPFUL LIST. THE PRICE IS FIFTY CENTS, AND IT MAY BE PURCHASED DIRECTLY FROM ITS AUTHOR, MISS HEATHER THORPE, BUFFALO MUSEUM OF SCIENCE, BUFFALO, N.Y.

QUESTIONS AND ANSWERS

QUESTION: I HAVE SEEN MANY ADVERTISEMENTS FOR DETERGENT TYPE CLEANERS WHICH CLAIM THAT THEY WILL WASH CLOTHES CLEANER AND THAT THE CLOTHES NEED NOT BE RINSED. WE LIVE IN A HARD WATER AREA, AND I FIND MY HAND WOVEN LINENS BECOMING GREYED LOOKING, BOTH THE WHITE AND COLORED ONES. DO YOU THINK A DETERGENT WOULD HELP IMPROVE THEIR APPEARANCE? IS IT SAFE TO WASH THEM WITHOUT RINSING?

ANSWER: OF COURSE WE ARE NOT IN A POSITION TO DO ANY RESEARCH OURSELVES. HOWEVER, AMERICAN FABRICS MAGAZINE RECENTLY REPORTED ON THIS PROBLEM. IT SAYS, "WITHOUT GOING INTO THE CHEMISTRY OF THE CONTENT OF A DETERGENT, AS IT IS COMMONLY KNOWN, IT IS QUITE SAFE TO SAY THAT YOU CAN USE A DETERGENT WITH CONFIDENCE IN LAUNDERING YOUR FINE FABRICS. GENERALLY SPEAKING, THE WORD DETERGENT USED WITH REFERENCE TO LAUNDRY SOAPS, MEANS THAT THE SOAP HAD A SUBSTANCE ADDED WHICH WILL AID IN THE LAUNDERING PROCESS. IT CAUSES THE SOIL TO LEAVE THE FABRIC QUICKLY . . . ALSO IT LEAVES NO SCUM ON THE FABRIC SUCH AS OCCURS WITH PURE SOAP. THE COLORS BECOME CLEARER, THE WHITES WHITER. IF THE TAP WATER IS HARD, THIS CONDITION IS COUNTERACTED BY THE DETERGENT. CLOTHES CAN BE WASHED WITHOUT RINSING, WITH PERFECTLY SATISFACTORY RESULTS. HOWEVER, MOST WOMEN PREFER TO RINSE CLOTHES ANYWAY AFTER WASHING, CHIEFLY AS A MATTER OF CUSTOM. THE NEW SOAPS THAT ARE ON THE MARKET TODAY ARE GREATLY APPRECIATED SINCE THEY SAVE TIME IN ALL THE OPERATIONS OF ACTUAL LAUNDERING." IN THE OPINION OF THESE EXPERTS, IT WOULD SEEM THAT A DETERGENT WOULD HELP.

THE WEAVERS' MARKET PLACE

FOR PROMPT SERVICE, BUY YOUR SUPPLIES IN THE MIDWEST.

DAVIS LINENS-TRIED & TRUE
LUREX METALLICS-LASTING SPARKLE
WE-GO WINDERS-FIT BOBBINS & SPOOLS

THE WORKBASKET

MRS. F.J. BLUM BOX 114C RR 1
WEST CHICAGO ILLINOIS
PHONE W. CHICAGO 8048 R 1
DRIVE: 1/2 MI. N OF US 64 ON KLINE RD.

REMEMBER THE PRICE RISE ANNOUNCED ON PAGE ONE. RENEW YOUR WARP & WEFT SUBSCRIPTION NOW. CLIP THE COUPON BELOW & SAVE MONEY. SEND TO:

NORWOOD LOOM COMPANY
1386 MILWAUKEE AVE.
CHICAGO 22 ILLINOIS

PLEASE RENEW MY SUBSCRIPTION TO WARP & WEFT FOR ONE YEAR AT THE LOW PRICE OF \$1.50. (NOT VALID AFTER JUNE 1ST, 1951)

NAME _____

ADDRESS _____

CITY _____ ZONE _____ STATE _____

PLEASE ALSO ENTER MY GIFT SUBSCRIPTION FOR:

NAME _____

ADDRESS _____

CITY _____ ZONE _____ STATE _____

REMARKS _____

AS OUR READERS ALREADY KNOW, SOME SUPPLIES HAVE BEEN SLOW IN COMING IN. HOWEVER, WE HAVE RECENTLY RECEIVED SOME GOOD SHIPMENTS OF ACCESSORIES WHICH YOU MAY BE NEEDING. THESE ARE:

BOAT SHUTTLES, BOTH LARGE AND SMALL SIZES. THESE ARE MAPLE, SMOOTH AND WELL FINISHED. THE LARGER SIZE CARRIES WOODEN SPOOLS AND IS USED FOR MEDIUM OR HEAVY WEIGHT WOOLS, COTTONS, LINENS, BOUCLES, ETC. THE SMALLER SIZE WORKS WELL EVEN WHERE THE LOOM DOESN'T GIVE A WIDE SHED, AND CARRIES A PAPER QUILL. THESE ARE SATISFACTORY FOR USE WITH ALL FINE MATERIALS--LINEN, COTTON, WOOL, ETC.
LARGE, \$2.50 SMALL, \$2.00
WOOD SPOOLS & PAPER QUILLS TO FIT THE ABOVE SHUTTLES
SPOOLS, \$1.50 DOZ. QUILLS, \$.50dz.

REED HOOKS WITH WOODEN HANDLES FOR THREADING OR SLEYING, \$.35

RUG SHUTTLES, LARGE SIZE TO HOLD RAGS OR HEAVY YARNS, \$1.00

THREADING BENCHES: THESE LITTLE BENCHES MAKE THREADING A PLEASURE AND ELIMINATE BACKACHE. SIT IN COMFORT WHILE YOU THREAD YOUR LOOM. THESE ALSO MAKE FINE TELEVISION BENCHES FOR CHILDREN OR SMALL LOW COFFEE TABLES. THEY HAVE AN ATTRACTIVE OIL FINISH ON HARD CHERRY WOOD IN A LIGHT RED TONE. \$7.00

NAME TAPES: THESE ARE MADE TO ORDER, WITH YOUR NAME AND OTHER DESIRED INFORMATION. WHITE OR BLACK TAPE, WHITE OR COLORED LETTERS. WRITE FOR INFORMATION AND PRICES--SIX WEEK DELIVERY.

NORWOOD LOOM COMPANY
1386 MILWAUKEE AVE.
CHICAGO 22 ILLINOIS