

# WARP & WEFT

VOLUME IV

NUMBER 12

OCTOBER, 1951

## THE WEAVING BOND TRANSCENDS DISTANCE BETWEEN NEW NAMES & FAR PLACES

MRS. IRENE BULGER OF CHICAGO SENDS US THIS MOST INTERESTING REPORT: "WHEN I REACHED TAMAZUNCHALA, MEXICO, THERE WAS A TERRIFIC FOG AND WE HAD TO LAY OVER A DAY BEFORE CONTINUING OUR TRIP. IN THE EVENING WE WENT WALKING, AND AT THE EDGE OF TOWN WE HEARD CHILDREN SINGING CHRISTMAS CAROLS. WE CLIMBED A HILL AND FOUND A MISSIONARY SCHOOL RUN BY JOHN T. DALE AND HIS WIFE. THE FIRST ROOM WE WENT INTO HAD TWO CRUDE LOOMS WITH THE INEVITABLE RUGS ON THEM. THIS WAS MRS. DALE'S PROJECT, AND HOW SHE HAD DONE AS MUCH AS SHE HAD AMAZED ME SHE KNEW NOTHING ABOUT WEAVING, BUT HAD PICKED UP WHAT SHE DID KNOW FROM A BOOK WRITTEN IN SPANISH. OF COURSE, SOME OF THE OLDER GIRLS MAY HAVE HAD A LITTLE KNOWLEDGE TO HELP HER SOME. HER BIG PROBLEM WAS THE SMALL CHILDREN. THEY ALL WANTED TO USE THE BIG LOOM, AND THEY COULDN'T EVEN REACH THE TREADLES. THEY TAKE THESE AZTEC INDIAN GIRLS WHO CAN SPEAK ONLY THE INDIAN DIALECT INTO THE SCHOOL AND TEACH THEM TO KEEP CLEAN, READ AND WRITE SPANISH, ETC. YOU'D HAVE LOVED TO HEAR THEM SING THEIR SONGS AT THE TOPS OF THEIR LUNGS! WE STAYED AS LONG AS WE COULD, FOR WHEN MRS. DALE HEARD WE WERE KINDRED SPIRITS IN WEAVING, SHE COULDN'T DO ENOUGH FOR US. I COULD GO ON AND ON!"

WE MADE A COMBINED COLOR AND WEAVING TOUR OF NORTHERN MICHIGAN THE OTHER DAY, AND IT WAS EXTREMELY PROFITABLE, ALL THE WAY AROUND. THE LEAVES WERE MORE BEAUTIFUL THAN WORDS CAN TELL, AND THE LAKES, BOTH THE SMALLER ONES AND GREAT LAKE MICHIGAN, WERE, BY ACTUAL COMPARISON, AS BLUE AS THOSE COLOR POST CARDS CLAIM.

OUR FIRST STOP WAS AT THE HOME OF MRS. JOHN NIRKENEN OF KALEVA. WE HAD NEVER HEARD OF MRS. NIRKENEN, BUT WE HAD LEARNED THAT KALEVA WAS A COMMUNITY MADE UP ALMOST ENTIRELY OF FINNS. WE FELT CERTAIN THAT IN SUCH A GROUP WE MUST SURELY FIND A WEAVER-- AND WE DID! MRS. NIRKENEN HAS BEEN IN AMERICA FOR OVER FIFTY YEARS, THOUGH HER APPEARANCE MAKES THAT SEEM IMPOSSIBLE. SHE WAS TAUGHT WEAVING BY HER MOTHER BEFORE SHE LEFT FINLAND, AND ONE OF HER FIRST PROJECTS IN THIS NEW HOME WAS TO FIND A LOOM. THE ONE SHE GOT HAD BEEN BUILT ALONG THE TRADITIONAL FINNISH DESIGN FOR AN EARLIER IMMIGRANT, SO THE LOOM HAS BEEN IN USE FOR A LONG, LONG TIME. CRUDE AS IT IS, THE SCARS RESULTING FROM THOSE MANY HOURS OF LABOR GIVE IT A LOOK OF DIGNITY AND BEAUTY, JUST AS WAS TRUE OF MRS. NIRKENEN HERSELF. THE LOOM HAS TWO HARNESSSES AND IS PUT TOGETHER WITH PEGS; BENCH AND LOOM IN ONE UNIT. THE DESIGN IS UNUSUAL, (P.5)

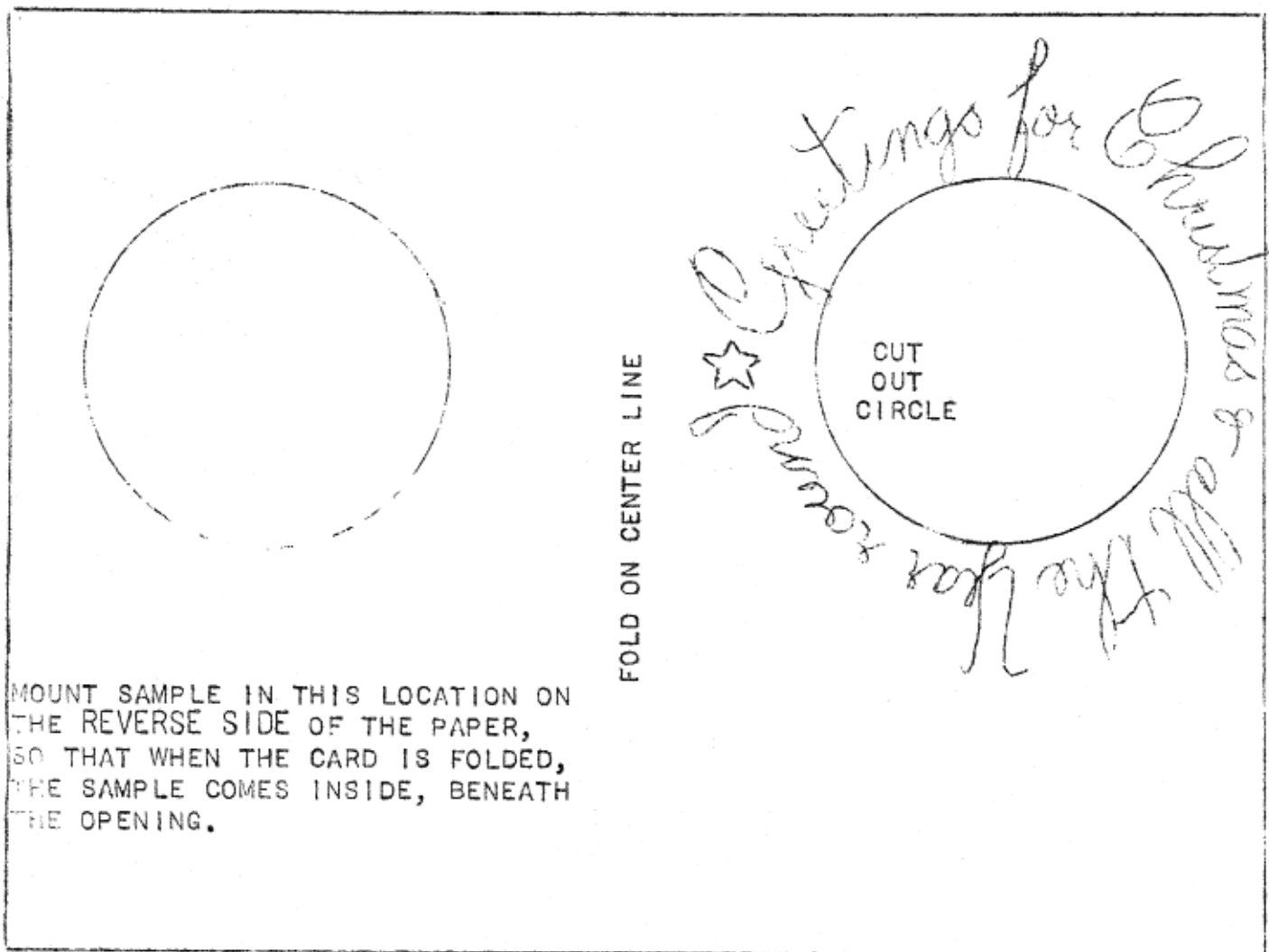
WARP & WEFT IS PUBLISHED MONTHLY. ADDRESS BOX 34, BALDWIN, MICHIGAN  
SINGLE COPIES AND BACK ISSUES, 20 CENTS EACH PLUS POSTAGE  
YEARLY SUBSCRIPTIONS, \$2.00

## COMPLETING YOUR CARDS

PLAN YOUR FABRIC SO THAT YOU HAVE ONE COMPLETE CIRCLE FOR EACH CARD. IT MIGHT BE ADVISABLE TO HAVE A FEW EXTRA CIRCLES, IN CASE SOME ARE SPOILED IN FINISHING.

YOU WILL NOTICE THAT AS THE PATTERN IS GIVEN THERE ARE A FEW THREADS ALL THE WAY AROUND OUTSIDE THE LARGER CIRCLE. THESE ARE TO ALLOW FOR POSSIBLE FRAYING AND FOR FASTENING IN PLACE. CUT THE CIRCLES APART, ALLOWING THIS EXCESS MATERIAL AROUND EACH MOTIF.

IF DESIRED, YOU MIGHT BUY LIGHTWEIGHT CONSTRUCTION PAPER FOR THESE CARDS, BUT WE FEEL THAT A HEAVY WEIGHT NOTEPAPER WOULD DO JUST AS WELL, AND YOU HAVE THE ADVANTAGE OF TAILOR-MADE ENVELOPES. HERE IS YOUR CARD, ALTHOUGH THE SIZE MIGHT VARY ACCORDING TO THE PAPER AVAILABLE TO YOU:

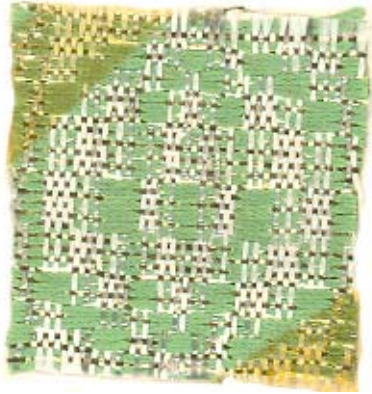


MOUNT SAMPLE IN THIS LOCATION ON THE REVERSE SIDE OF THE PAPER, SO THAT WHEN THE CARD IS FOLDED, THE SAMPLE COMES INSIDE, BENEATH THE OPENING.

THE EASIER METHOD IS TO LIGHTLY TRACE THE LETTERING, THEN GO OVER IT WITH A PEN. BLACK INK WOULD LOOK WELL, BUT IF YOU USE GOLD TABBY GOLD INK WOULD BE MOST ATTRACTIVE. IF YOU ARE ABLE, IT WOULD BE MORE PERSONAL TO HAVE THE GREETING AS WELL AS THE SIGNATURE IN YOUR OWN WRITING.

# CHRISTMAS CIRCLE

MANY READERS HAVE ASKED FOR SUGGESTIONS FOR MAKING HANDWOVEN CHRISTMAS CARDS, SOME HAVE WORKED OUT ONE FOR YOU THIS MONTH. WE HAVE TRIED TO KEEP IT SIMPLE YET INTERESTING AND GAY SO THAT YOU WILL BE PROUD TO SEND IT TO YOUR FRIENDS, WEAVERS OR NOT.



## THREADING DRAFT

X		X	X	X		X	X		X	X		X	X	X		X
	X		X	X	X	X		X	X	X		X	X	X	X	X
X		X			X	X	X	X	X		X	X	X	X	X	X
X	X				X	X	X		X	X		X	X	X		X

## TIE-UP:

0	0	X	X	X	0	40	RISING SHED
0	X	X	0	0	X	3	
X	X	0	0	X	0	2	COUNTERBALANCED
X	0	0	X	0	X	1	
1	2	3	4	A	B		

## TREADLING:

4--2X  
 1--2X  
 2--2X  
 3--3X  
 4--4X  
 1--5X  
 REVERSE

WITH TABBY

## BEAT:

THE ENTIRE DESIGN OF THE CARD IS BASED ON THE CIRCLE, AND IT TOOK A GREAT DEAL OF EXPERIMENTATION TO WORK IT OUT FOR SIZE AND SHAPE. TOO HARD OR TOO LIGHT A BEAT WILL CHANGE THE PROPORTIONS AND SHAPE.

ANY CHANGE IN THE YARNS USED WILL ALSO CHANGE THE PROPORTIONS OF THE CIRCLE, IN WHICH CASE THE ROTATION OF THE TREADLING WILL REMAIN THE SAME, BUT THE NUMBER OF ROWS ON EACH TREADLE MAY HAVE TO BE CHANGED.

## WARP:

30 PER INCH  
 DULL, SINGLE PLY RAYON "ANGELSKIN"  
 GLOSSY RAYON SIZE 450  
 THESE ARE THE SAME THREADS USED IN THE SAMPLE OF AUGUST, 1950

WE USED AN EQUAL NUMBER OF THESE THREADS THROUGHOUT THE WARP. THEY WERE THREADED THROUGH THE WARP AT RANDOM, WITH NO ATTEMPT TO TAKE THEM IN ANY SET ORDER.

## WEFT:

PATTERN THREAD, 3/3 RAYON, USED DOUBLE IN THE SHUTTLE

TABBY, 1/32" PLASTIC METALLIC

SLEY: 30 PER INCH  
 TRIPLE IN A 10 DENT REED OR  
 DOUBLE IN A 15 DENT REED

## SISTER GOODWEAVER SAYS:

THE WAY TO BE SURE  
 THERE IS NOTHING WRONG

IS TO CHECK EACH STEP  
 AS YOU GO ALONG.

## MORE CHRISTMAS CARD IDEAS

SEVERAL OTHER IDEAS FOR HAND WOVEN CHRISTMAS CARDS CAME TO MIND BUT FOR VARIOUS REASONS, THE ONE WE CHOSE SEEMED THE MOST PRACTICAL FOR OUR ACTUAL SAMPLE. IN DISCUSSING THE OTHERS, WE DECIDED TO TRY TO TELL YOU ABOUT THEM, ANYWAY. THERE ARE SEVERAL WAYS IN WHICH WEAVING CAN BE USED FOR A CHRISTMAS CARD:

1-THE FABRIC CAN BE WOVEN AND USED FOR THE BACKGROUND, WITH THE GREETING WOVEN IN OR WRITTEN ON THE FABRIC, OR WRITTEN ON PAPER AND FASTENED TO THE FABRIC.

2- THE ACTUAL CARD MAY BE OF PAPER OR OTHER MATERIAL, ON WHICH THE MESSAGE AND WEAVING ARE MOUNTED.

3- SAME AS 2, EXCEPT THAT THE CARD IS CUT OUT AND THE WEAVING IS MOUNTED BEHIND THE CUT-OUT. IN THIS WAY, CHRISTMAS TREES, ANGELS, WREATHS, OR ANY OTHER MOTIF MAY BE CHOSEN.

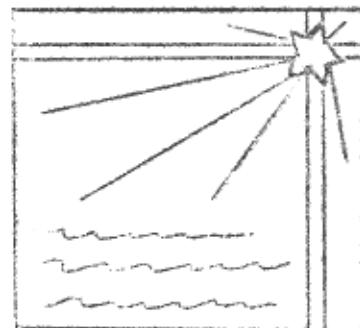
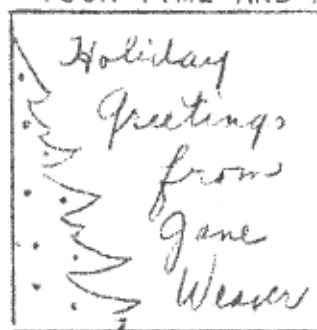
4- THE TRULY SYMBOLICAL CARD, SIMILAR TO THE ONE SHOWN IN WARP & WEFT IN NOVEMBER, 1950, IN WHICH WE COMBINED THE STRAW OF THE MANGER WITH THE BRIGHT COLORS OF THE ROBES, TO THE NOTES OF A CHRISTMAS CAROL. ACTUALLY, THESE ARE OFTEN THE MOST ORIGINAL AND INTERESTING OF ALL. REMEMBER, THOUGH, TO KEEP THE SYMBOLISM SIMPLE ENOUGH FOR ALL TO UNDERSTAND.

WE RECENTLY SAW A VERSION OF SUGGESTION 2 WHICH WAS UNUSUAL AND ATTRACTIVE. THE "CARD" ITSELF WAS A PIECE OF CLEAR HEAVY PLASTIC (SILVER PAPER COULD BE USED.) THE LOWER LEFT HAND CORNER WAS A PART ENVELOPE MADE OF WOVEN MATERIAL CUT IN THE SHAPE OF THE BRANCHES OF A CHRISTMAS TREE, AND THE PLASTIC SLIPPED INTO THE ENVELOPE. CLEAR? SEE THE ILLUSTRATION ABOVE, RIGHT.

AN INTERESTING AND SIMPLE VERSION OF SUGGESTION 3 WAS WOVEN BY OUR ASSISTANT EDITOR. SHE WOVE, ON A MEDIUM HEAVY NATURAL WARP IN TABBY, ABOUT 2" OF HEAVY WHITE CHENILLE, THEN CAME A HORIZON OF 1 ROW OF GREEN FRINGE ABOUT  $\frac{1}{2}$ " LONG, AND A SKY OF ABOUT 1" BLUE WOOL. THREE LINES OF VERY HEAVY GREY YARN PUT IN THE CHENILLE WITH A NEEDLE REPRESENTED THE TRAVELING WISE MEN, AND SEVERAL STRANDS OF SILVER PLASTIC, STUCK TO THE BLUE GROUND WITH A PAPER SILVER STAR, REPRESENTED THEIR GOAL. UNDERNEATH SHE LETTERED, IN BLUE, "THE WISE MEN FOLLOWED THE LIGHT OF THE STAR." SIMPLE; EFFECTIVE.

A VERSION OF SUGGESTION 1 IS ANOTHER INTERESTING IDEA. THE ENTIRE CARD IS WOVEN OF MIDNIGHT BLUE WOOL AND CHENILLE ON A PLAIN WARP IN TABBY. IN THE CARD IS WOVEN ONE VERTICAL STRIPE OF SILVER, ABOUT  $\frac{1}{4}$ " WIDE, NEAR THE EDGE ON THE RIGHT HAND SIDE, AND ONE HORIZONTAL STRIPE THE SAME WIDTH NEAR THE TOP OF THE CARD. WHERE THE STRIPES CROSS IS MOUNTED A PAPER SILVER STAR, WITH RAYS OF SILVER PLASTIC EMANATING FROM IT. LETTERING AT THE BOTTOM WAS "AND LO, THE STAR OF THE EAST CAME AND STOOD WHERE THE CHILD WAS."

YOU WILL, OF COURSE, HAVE OTHER IDEAS. YOUR ONLY LIMITATIONS ARE YOUR TIME AND PATIENCE.



## NIRKENEN (CONT. FROM PAGE 1)

WITH A CURVED PIECE, CUT FROM A SINGLE BLOCK OF WOOD, WHICH GOES DIRECTLY FROM THE WARP BEAM TO THE TOP FRAMEWORK. THE LENGTH FROM FRONT TO BACK IS LESS THAN IN THE MODERN LOOMS, AND MRS. NIRKENEN COMPLAINS THAT SHE HAS DIFFICULTY IN GETTING A GOOD SHED. HER REED IS ACTUALLY MADE OF STRIPS OF REED, NOT METAL, AND THOUGH BENT AND BATTERED, NONE OF THE SPACERS WERE MISSING.

OUR CONVERSATION WITH MRS. NIRKENEN WAS NECESSARILY LIMITED, BECAUSE IT HAD TO BE ACCOMPLISHED THROUGH AN INTERPRETER. SHE DID MAKE CLEAR, HOWEVER, THAT HER GREATEST DESIRE IS TO GET A "BIGGER" LOOM, MEANING ONE WITH FOUR HARNESSSES, SO THAT SHE COULD DO PATTERN WORK. SHE SHOWED US A LINEN TABLECLOTH WOVEN IN FINLAND BY HER SISTER-IN-LAW. THE FLAX WAS RAISED ON THE HOME FARM, PREPARED AND SPUN THERE, THEN WOVEN INTO THE CLOTH. IT WAS CAREFULLY PIECED DOWN THE CENTER, WITH ALL THE PATTERNS MATCHING, AND THE ENTIRE PROJECT SHOWED EXCELLENT WORKMANSHIP. THE DESIGN WAS "SNAIL'S TRAIL" WITH A HARMONIZING BORDER. MRS. NIRKENEN SAID THAT THE DESIGN, AS FAR AS SHE KNEW, WAS OF FINNISH ORIGIN. HOW CAREFULLY OUR PREDECESSORS PRESERVED THEIR DRAFTS, THAT THEY COULD PASS THROUGH MANY GENERATIONS IN TWO COUNTRIES, AND REMAIN RECOGNIZABLY THE SAME.

WE CALLED ON SEVERAL OTHER WEAVERS ALONG THE WAY, BUT WERE NOT FORTUNATE ENOUGH TO FIND THEM AT HOME, UNTIL WE REACHED MANTON, WHERE WE MET MRS. DOROTHY CARPENTIER. SHE HAS TWO LOOMS, BOTH MODERN, AND DOES CUSTOM WEAVING. SHE SAYS SHE CANNOT KEEP UP WITH HER ORDERS FOR RUGS. ONE OF HER MOST INTERESTING PROJECTS RECENTLY WAS THE MAKING OF TWENTY FOUR

YARDS OF DRAPERY FABRIC FOR THE AMVET HOME IN CADILLAC. THE MATERIAL, WHICH WE SAW, WAS DELIGHTFUL IN ITS SIMPLICITY. IT FITS THE INFORMAL TYPE OF BUILDING CHOSEN BY THE AMVETS. IT WAS ONE OF THE MOST BEAUTIFUL AND PRACTICAL FABRICS WE'VE SEEN FOR A LONG TIME; MODERN WITHOUT BEING GLARINGLY SO. MRS. CARPENTIER CHOSE A SHADOW WEAVE DIAMOND FROM MRS. ATWATER'S RECIPE BOOK, AND EXECUTED IT IN A COMBINATION OF FINE BOUCLE IN DARK BROWN AND A VERY COARSE SOFT FLUFFY BOUCLE IN NATURAL. THE FINISHED FABRIC WAS HEAVY ENOUGH TO HANG WELL, AND WHEN PULLED CLOSED MADE AN EXCELLENT PROTECTIVE DRAPE, ALTHOUGH THEY ARE UNLINED. THEY WILL SURELY WEAR WELL AND CAN BE LAUNDERED.

MRS. CARPENTIER'S WORK IS SO BEAUTIFUL THAT IT IS DIFFICULT TO REALIZE THAT SHE HAS BEEN WEAVING FOR ONLY TWO YEARS. HER STUDIO IS IN HER HOME, SO PAY HER A VISIT WHEN YOU VACATION IN NORTHERN MICHIGAN.

\* \* \* \* \*

SILAS SAYS:

TO PREVENT RAVELLING, TRACE THE DESIRED CUTTING LINE WITH WAX CRAYON BEFORE CUTTING. FOR GREATER PERMANENCE, PRESS THE WAXED LINE WITH A WARM IRON.

LOOM WEAVING WAS PRESCRIBED IN A RECENT NEWSPAPER ARTICLE BY DR. THEODORE VAN DELLEN FOR PATIENTS SUFFERING FROM ARTHRITIS IN THE FEET, ANKLES, KNEES, ELBOWS, SHOULDERS, OR BACK.

A RECENT TV PROGRAM SUGGESTS THAT BORDERED PLACE MATS BE MADE LARGE ENOUGH FOR THE BORDER TO HANG OVER THE TABLE EDGE--MORE DECORATIVE AND SHOWY; DOUBLY SO WHEN THE MATS ARE HAND WOVEN.



## AN EDITORIAL

WE ARE HONESTLY TITLING THIS AN EDITORIAL, SO IF YOU DO NOT WISH TO READ OUR PERSONAL OPINIONS, YOU MAY PASS THIS COLUMN BY. WE FEEL VERY STRONGLY ABOUT THIS MATTER OF CHRISTMAS CARDS, HOWEVER, AND FELT THAT WE JUST COULD NOT IGNORE THEM.

CHRISTMAS IS A RELIGIOUS FESTIVAL. TRUE, MAN HAS MADE MORE AND MORE A COMMERCIAL THING OF IT, BUT IN THE LAST ANALYSIS, IT IS A RELIGIOUS FESTIVAL AND SO SHOULD BE OBSERVED DIFFERENTLY FROM OUR OTHER HOLIDAYS. PLEASE DON'T MISUNDERSTAND ME. RELIGION IS MORE IMPORTANT TO SOME PEOPLE THAN IT IS TO OTHERS. BUT, BECAUSE OF ITS RELIGIOUS CONNOTATIONS, ALL OF US SHOULD MAKE OUR CHRISTMAS CUSTOMS ACTIVITIES OF DIGNITY. THIS INCLUDES THE SENDING OF GREETING CARDS.

NOT ALL GREETING CARDS FOR THE HOLIDAY SEASON NEED BE RELIGIOUS IN THEME, BUT ALL CARDS ON WHICH YOU SIGN YOUR NAME SHOULD BE IN GOOD TASTE. CHUBBY SNOW MEN OR REINDEERS WITH NOSES THAT GLOW IN THE DARK OR FLUORESCENT SANTA CLAUSES ARE NOT IN GOOD TASTE BY ANY STANDARDS. SIMPLICITY IS ALWAYS IN GOOD TASTE, SO IF YOU ARE DOUBTFUL, FIND A CARD WHICH SAYS SIMPLY AND WITH DIGNITY THE CHRISTMAS AND NEW YEAR GREETINGS YOU WANT TO SEND YOUR FRIENDS. AFTER ALL, ISN'T THAT WHAT YOU WANT? AND DON'T THINK THAT BECAUSE YOU DO NOT WISH TO SPEND A GREAT DEAL OF MONEY ON YOUR CARDS YOU MUST SACRIFICE GOOD TASTE. IT IS AVAILABLE IN LESS EXPENSIVE SMALL CARDS, ALTHOUGH SOMETIMES IT TAKES A BIT OF LOOKING. IN THE LONG RUN, YOU'LL BE BETTER SATISFIED FOR HAVING SPENT THAT BIT OF EXTRA EFFORT. AND IF YOU REALLY FEEL THAT YOU WANT A BIT MORE THAN JUST A LETTERED GREETING, IT IS POSSI-

BLE TO FIND SMALL, INEXPENSIVE CARDS WHICH ARE COLORFUL AND CHARMING WITHOUT BEING GARISH AND CHEAP

MANY PEOPLE FEEL THAT THEY MUST SAVE A FEW PENNIES BY SENDING THEIR CARDS UNSEALED FOR HALF POSTAGE. WOULDN'T IT BE BETTER TO SEND CARDS A BIT SMALLER, LESS GAUDY, AND SEND THEM WITH DIGNITY, SEALED AND WITH FULL POSTAGE? THE WHOLE IDEA OF GREETING CARDS IS TO SEND GOOD WISHES TO OUR FRIENDS. IS IT NOT MORE KIND, THEN, TO SIGN THEM BY HAND? SURELY IF YOU DO NOT CARE THAT MUCH ABOUT THE RECIPIENT, HE IS NOT IMPORTANT ENOUGH TO RECEIVE A CARD AT ALL.

PERHAPS THIS IS NOT THE EASY WAY. IF IT SEEMS HARD, STOP AND DECIDE FOR YOURSELF WHETHER OR NOT YOU REALLY CARE THIS MUCH FOR YOUR FRIENDS. IF THEY ARE NOT THIS IMPORTANT TO YOU, WHY NOT SKIP THE WHOLE THING? BETTER THAT THAN TO INSULT YOUR FRIENDS WITH GARISHLY PRINTED CARTOONS, WITH YOUR NAME PRINTED BY MACHINE, SENT IN UNSEALED ENVELOPES FOR HALF POSTAGE.

\* \* \* \* \*

PAUL

HE FOUND LIFE A PATTERN  
WOVEN BY THE LAW  
AND MEN COLORLESS THREADS IN THE  
FABRIC;  
SAVE ONE  
WHOSE FACE SHONE  
WHILE JAGGED STONES CARVED THE  
LAST DARKNESS.  
AND ANOTHER,  
WHOSE LIGHT AND VOICE  
ILLUMINED A DESERT ROAD.

THEREAFTER,  
FRAIL BUT UNAFRAID,  
HE JOURNEYED INTO THE DAWN--  
TEARING THE PATTERN TO SHREDS  
TO FREE SOULS  
FROM THE TYRANNY OF THE DARK.  
EARL B. MARLATT

## SUGGESTION

INSTEAD OF A QUESTION AND ANSWER COLUMN THIS MONTH WE WISH TO BRING YOU A SUGGESTION WE RECEIVED SOME TIME AGO FROM MRS. A. J. HONETT OF PINECREST, CALIFORNIA. HERE IT IS:

"WHEN I PLAN TO WEAVE TWO OR MORE CONSECUTIVE SHORT WARPS OF DIFFERENT COLORS BUT THE SAME DENT AND WIDTH, I WARP IT ALL ON ONE WARPING. MY LOOM HAS A PLAIN BEAM.

PREPARE THE GUIDE STRING ON THE WARPING REEL WITH EACH DESIRED LENGTH CUT AND TIED ON TO ANOTHER COLOR. THEN PROCEED IN THE USUAL MANNER WITH THE REGULAR WARP BY CUTTING AND TIEING ON AS YOU WARP.

THIS PROLONGS THE WARPING PROCESS BUT GAINS A GREAT DEAL OF TIME BY ONE DRESSING OF THE LOOM AND LESS WASTE OF THREAD, WITH TENSION CONSTANT.

I RECENTLY COMPLETED TWENTY YARDS OF WARP OF GREY AND BLUE PLACE MATS AND YELLOW AND PINK NAPKINS. I PUT IT ON WITH THIS METHOD AND IT WORKED VERY WELL.

THIS IS MY OWN IDEA AND SEVERAL MODESTO WEAVERS WERE SO ENTHUSIASTIC THAT THEY SUGGESTED I SEND IT IN TO WARP & WEFT."

THANK YOU VERY MUCH MRS. HONETT. WON'T MORE OF OUR READERS PARTICIPATE IN THIS MANNER? OTHERS ARE INTERESTED IN WHAT YOU ARE DOING, AND SOMETIMES WHAT SEEMS LIKE A SIMPLE IDEA TO YOU IS NEW TO SOMEONE ELSE.

ONE READER HAS WRITTEN FOR SUGGESTIONS FOR SIMPLE ARTICLES, NOT REQUIRING TOO MUCH FINISHING, WHICH MIGHT SELL INEXPENSIVELY. IF YOU HAVE ANY SUGGESTIONS ALONG THIS LINE, WE'D LIKE TO HAVE THEM AS THIS SEEMS A DIFFICULT PROBLEM TO MANY SHOP KEEPERS.

## BOOK REVIEW

THIS MONTH WE WANT TO BRING TO YOUR ATTENTION AGAIN A BOOK OF WHICH YOU MAY HAVE HEARD. HOWEVER, IT RECENTLY HAS BEEN REVISED AND WE THINK IT WOULD BE OF SPECIAL VALUE TO THOSE WORKING ALONE. THE TITLE IS SEVEN PROJECTS IN ROSEPATH, BY BERTA FREY.

THE BOOK IS CLEARLY WRITTEN AND ILLUSTRATED, AND ONE OF THE THINGS WE LIKE MOST ABOUT IT IS THE MEANS USED TO SUGGEST EXPERIMENTATION BY THE INDIVIDUAL WEAVER. IT OPENS WITH AN ILLUSTRATION OF FOUR VARIATIONS OF ROSEPATH THREADING, WITH TWELVE PROBLEMS FOR THE WEAVER TO EXECUTE ON THESE. THE DIRECTIONS PROCEED WITH SECTIONS DEVOTED TO COLOR VARIATIONS, DESIGN FOR COLOR AND TEXTURE COMBINATIONS, AND DESIGNING FOR AN O HARNESS ROSEPATH.

MISS FREY THEN GOES INTO A SECTION WHICH WILL BE MOST VALUABLE TO BEGINNERS. MANY HAVE ASKED FOR INSTRUCTIONS, PRINTED, FOR MAKING VARIOUS KINDS OF LAID IN DESIGNS, LACES, ETC. THIS BOOK IS THE ANSWER, FOR IT GIVES EXCELLENT DIRECTIONS FOR DOING LENO, SPANISH LACE, BROOKS BOUQUET, BRONSON, PERUVIAN GAUZE, GREEK LACE, MODIFIED BROOKS AND DANISH LACE COMBINED. BOUND WEAVING IS ANOTHER TECHNIQUE ALL TO SELDOM FOUND DESCRIBED IN BOOKS, AND MISS FREY TELLS CLEARLY HOW TO GO ABOUT DOING IT. O HARNESS DOUBLE WIDTH AND INTERWOVEN ROSEPATH ARE ALSO INCLUDED AS WELL AS SOME SPECIAL TECHNIQUES NOT DIRECTLY CONNECTED TO ROSEPATH.

TITLE: SEVEN PROJECTS IN ROSEPATH

AUTHOR: BERTA FREY

PRICE: \$1.50

AVAILABLE AT: BERTA FREY, 210 E. 22ND ST., NEW YORK, 10, N.Y.

# THE WEAVER'S MARKETPLACE

WORSTED YARN  
2/18'S EXTRA SOFT SPUN WORSTED  
5000 YARDS PER POUND  
HALF POUND CONES  
40 FAVORITE COLORS

EXTRA FINE QUALITY \$7.50 LB.  
COLOR SAMPLES FREE ON REQUEST

ROBIN & RUSS HANDWEAVERS  
25 W. ANAPAMU ST.  
SANTA BARBARA, CALIFORNIA

## CHRISTMAS IS COMING

WEAVE YOUR GIFTS WITH  
CHERISHED LINEN  
SAYLINMILLS AND LOOMLORE  
FOR EVERLASTING BEAUTY

SELECT ANY SIZE--CHOOSE ANY COLOR

THE WORKBASKET  
BOX 114C, R.R. 1-PHONE W. CHI. 8048RI  
WEST CHICAGO, ILLINOIS

## THE CHICAGO WEAVERS GUILD

ANNOUNCES

A FEW OPEN DATES FOR SHOWING  
OF ITS

### TRAVELING EXHIBIT

FOR INFORMATION WRITE

CHICAGO WEAVERS GUILD  
ELEANOR FOLEY, PROJ. CHR.  
5035 LANSING AVENUE  
CHICAGO, ILLINOIS

## LEARN TO WEAVE BY MAIL

HUNDREDS OF STUDENTS HAVE PROFITED FROM OUR SIMPLE SYSTEM OF MIMEOGRAPHED LESSON SHEETS FOR BEGINNING WEAVERS, USED PREVIOUSLY ONLY IN CONJUNCTION WITH STUDIO LESSONS. NOW FOR THE FIRST TIME, WE ARE MAKING THESE LESSONS AVAILABLE IN A FORM PRACTICAL FOR USE BY THE INDIVIDUAL WORKING ALONE, FAR FROM PERSONAL INSTRUCTION BY EXPERTS.

UNLIKE MOST OTHER MAIL ORDER LESSONS, THESE INCLUDE ACTUAL THREAD SAMPLES AND DETAILED INFORMATION ON HANDLING VARIOUS TYPES OF MATERIALS. IN ADDITION, THE SERIES COVERS THEORY OF WEAVING, PLANNING PLAIN AND PATTERNED WARPS, BOOKS AND PERIODICALS, FINISHES, AND A PERSONAL LETTER WITH EACH LESSON TO CRITICIZE WORK SUBMITTED AND ANSWER ANY INDIVIDUAL QUESTIONS, CLARIFYING ANY POINTS PUZZLING THE STUDENT.

INCLUDED:

10 LESSONS  
1 SUPPLEMENT COVERING SOURCES  
OF SUPPLIES  
10 PERSONAL LETTERS  
CRITICISM OF 2 WOVEN SAMPLES  
TOTAL PRICE, \$25. (IN ADVANCE)

GLADYS ROGERS BROPHIL  
BOX 34  
BALDWIN MICHIGAN