

warp and weft

Vol. X, No. 4

April, 1957

warp and weft

Published monthly (except July and August)
by Robin & Russ Handweavers, 632 Santa
Barbara St., Santa Barbara, Calif.

Subscription: \$2.75 per year.

Back Issues: 30c each, plus 2c postage.

Editor: Russell E. Groff, 632 Santa Barbara St.,
Santa Barbara, California.

Assistant Editors: Robin Groff and Frederick
Brown.

Volume 10, No. 4

April, 1957

A Word from the Editor

We, in California, are extremely fortunate in the wonderful climate that we have here. It feels like spring one day and summer the next, and of course, this turns our minds to summer vacation time. What shall we do this summer is the question? Should we go back to the Banff School of Fine Arts this summer, something that we know we would enjoy, or should we go to another weaving school, and learn their approach to hand weaving. We also want to take a bicycle trip and take Janice, our 4½ year old daughter on such a trip with us. Our goal for such a bicycle trip would be to visit Idaho and Utah, and get acquainted with that part of the country. Still not sure what we will do, but perhaps by next month we will know.

During the past month, we purchased a machine for our shop, which we are sure will be educational, and we hope profitable. It is a twisting machine, with 12 spindles, and it will twist 12 spools of thread at one time. We have found that there are many, many fine threads available that many of us will not even consider trying for hand weaving. And of course, there are many threads that we would often like twisted together, to give us different textures, and accents, and

Page 2

so our desire, for the past 2 or 3 years for a twisting machine.

We tried everywhere possible to get a single spindle machine, and it seems that no one makes them, so we ended up with a used, 12 spindle machine.

It isn't hooked up yet, and we haven't tried to use it yet, but each day we try to do a little towards getting it ready to use. We built a motor mount over the weekend, and hung it from the ceiling, and our next problem, will be to experiment and get the right size motor, the right length belt to drive the twister, and then belts for the various spindles on the twister. We hope that we can twist some novelty threads, and do other such work from time to time. Will let you know just how it works out in future issues.

RUSSELL E. GROFF, *Editor*

This Month's Cover

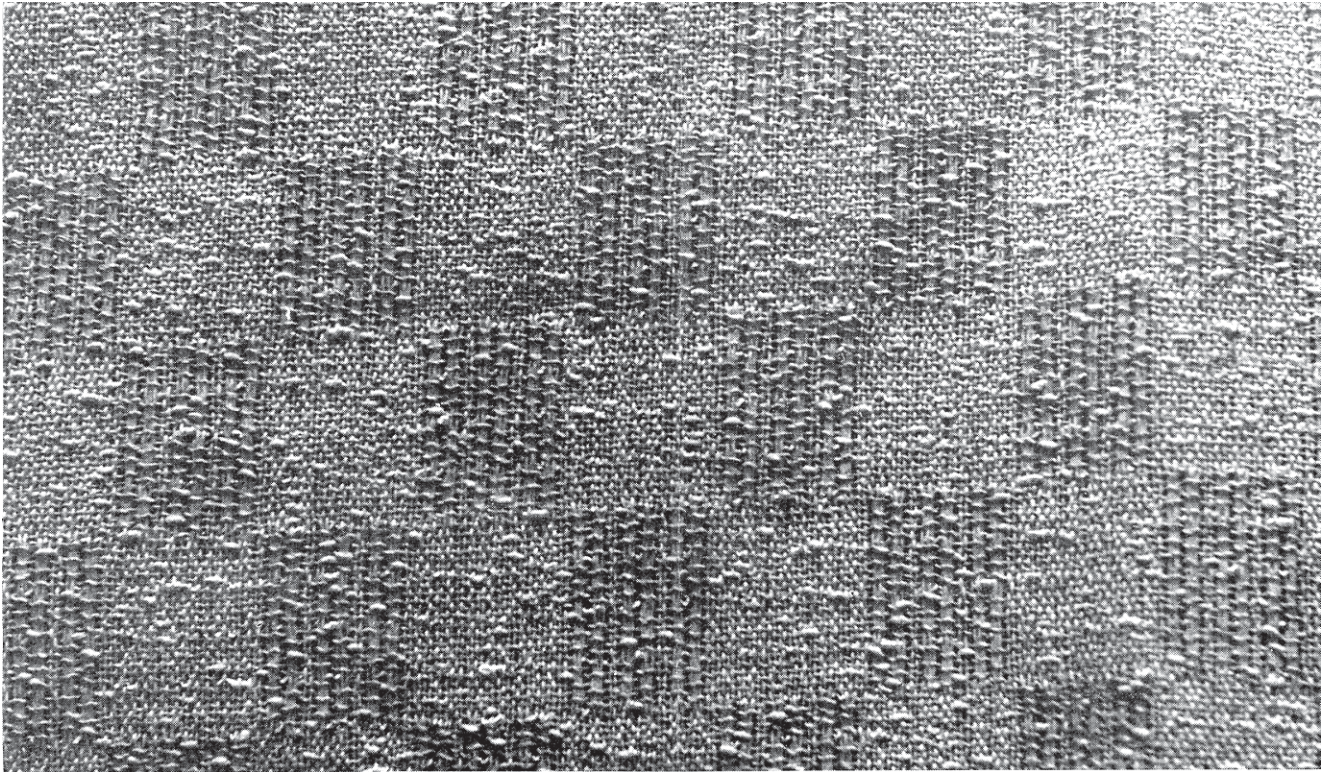
The cover this month is a detailed photograph of an 8 harness tablecloth woven by your editor at the Banff School of Fine Arts last summer.

The warp was an 18/2 linen, natural, and the weft was the same linen and also a heavy 5 cord linen, of the type used by shoe manufacturers for sewing soles on shoes, etc.

The pattern is particularly intriguing because of the 4 different textured blocks.

We did weave this same table cloth in a finer linen, in place of the cord linen, and it was very effective, but the heavy cord linen made the 4 blocks stand out so much more, that I felt it was particularly attractive.

This pattern is from a Finnish Text, titled, "KOTIEN JA KOULUJEN KANGASPUIHIN." I think it is a particularly good text for the multiple harness weaver, as most of the patterns are 8, 10 and 12 harness ones.



The February Sample

We have been greatly interested in the many responses to the sample that we had in February, in *Warp and Weft*. These were the drapes that we made for our home, using the Ramie warp, and the linen and acetate combination in the weft.

We are printing a picture of this particular pattern or fabric for a specific reason. You will also see in *Warp and Weft*, on page six, another fabric with the same type of pattern, that is M's and O's. We want you to notice how firm and substantial this particular fabric is, and then compare it with the other photograph, which is also an M's and O's pattern. Notice in our drapes, that the M part of the pattern is broken up by two threads in two places. These two threads appear as a plain weave, and tend to hold the ribs of the M & O from slipping, as they normally tend to do in most M & O patterns. These threads are added after the end of each of the blocks in the M's and O's pattern and are on harnesses 1 and 4. We hope

that perhaps you might be interested in this effect, and might try it out on a fabric of some kind.

It is our opinion that this effect makes possible the use of M's and O's in many other fabrics, other than the traditional linens it is normally used in.

On fine close settings, I think that it might have it's use in many clothing fabrics, and of course in drapes, as we used it.

Perhaps some of you have already had some experiences with this weave in many other fabrics and might share with us your experiences that we might pass them on to others.

I might also mention that we had used this 1,4 threading at the end of the M's and O's block before, but that it was Harriet Douglas Tidball who brought this to our attention again, and then we began to realize the new fields of endeavor that it opened to the weaver.

Moon Glow

A sheer drapery which is so constructed that even the moonlight will penetrate enough to lighten up the interior of your home. Woven in a variation of an M's and O's pattern.

TIE-UP DRAFT:

		X	X		X		4.
	X	X		X			3.
X	X				X		2.
X			X	X			1.
	1	2	3	4	A	B	

THREADING DRAFT

4.			X	X		X	X		X	X
3.	X	X			X	X			X	X
2.			X	X		X	X	X	X	
1.	X	X			X	X		X	X	

WARP USED:

1. A 20/2 Egyptian cotton, color tan was the warp thread in these sheer drapes.

WEFT USED:

The weft thread was the RAMIE thread in size 20/2, bleached white.

REED USED:

A 15 dent reed was used, and ~~it was~~ double sleyed, or 30 threads per inch were used in the fabric.

TREADLING:

1. Treadle No. 1 — 1 time
2. Treadle No. 3 — 1 time
3. Treadle No. 1 — 1 time
4. Treadle No. 3 — 1 time
5. Treadle No. 1 — 1 time
6. Treadle No. 3 — 1 time
7. Treadle No. 1 — 1 time
8. Treadle No. 3 — 1 time
9. Treadle No. 1 — 1 time
10. Treadle No. 3 — 1 time
11. Treadle No. A — 1 time
12. Treadle No. B — 1 time
13. Treadle No. A — 1 time
14. Treadle No. B — 1 time
15. Treadle No. A — 1 time
16. Treadle No. B — 1 time

There are 16 threads in each unit of the pattern, and we have numbered the treadling in sequence above.



Cost of the Project

WARP:

20/2 Egyptian cotton on 1/2 lb. spools. 8400 yards per lb. \$5.00 per lb. (fast colors).

WEFT:

Ramie, size 20/2, 3000 yards per lb. \$3.20 per lb., in bleached white. Also available in size 9/1 natural, 2700 yards per lb. Price is \$2.40 per lb.

It took just 1 lb. and 13 oz. of the 20/2 Egyptian cotton, color Tan, for the Warp. Our warp was 44" wide, and 10 yards in length. Thus, with the Egyptian cotton cost-

ing \$5.00 per lb., the Warp came to 91c per yard.

For weft thread, we used about $\frac{1}{2}$ an ounce less than 3 lbs. for the $9\frac{1}{4}$ yards of fabric that we were able to get from our 10 yards warp. This costs \$3.20 per lb., and thus the weft cost \$9.60, or \$1.07 per yard.

WARP: 44" wide, 1 yd. length	.91
WEFT: cost per yard length	1.07
Total cost	\$1.98

More About the Fabric

This particular fabric came about by an accident. In the adult education class I teach, we had set up a loom with an M & O's pattern, which had a border, an inner pattern and a little different edge. This was set up for place-mats, and of course was beaten fairly tightly, and firmly. However one evening, I didn't keep an eye on what was being done on this particular loom, and the student was beating this fabric very lightly. I might mention that she was doing this by accident and not intention.

Looking at the fabric, I noticed how nice and even the center portion appeared and I thought at the time that it would make a nice drape.

The next morning, I sat down at the loom, put on a sample warp, and picked up out the portion of the pattern I liked, and started to experiment. Thus, the sample for this month's issue. We hope that you like it.

I realize now that it would have been much more satisfactory if I had used say a 40/2 linen for warp rather than the cotton. This would have made the fabric a little firmer, stiffer, and crisper, and I believe, not quite as liable to have the weft thread slip or slide as it is prone to do in patterns of this type. We did try to compensate for this slipping by using the Ramie for the weft

Sample Materials Available

The materials used in this month's sample are available from Robin & Russ, Handweavers, 632 Santa Barbara Street, Santa Barbara, California. A free sample sheet listing these yarns is available if anyone cares to write and ask for one.

thread, to give the fabric a little more stiffness.

We did try several different threads as the weft thread before settling on the Ramie. We were pleased that this did work out well, as the Ramie is an inexpensive thread compared to some linens, and yet, still has the same properties as linen, and thus gave us the approximate same results.

I do think that this will make an extremely nice sheer fabric, and a durable one also, as the Egyptian cotton is a fast color, and the Ramie tends to resist rot, won't shrink or stretch, tends to be mildew proof, etc.

Book Review

Another of the latest Swedish Series of Weaving Texts has just been published. A companion book to *Handdukar Och Duktyg*, and *Vi Vaver till Hammet*, this latest one is called *Yllevaver*. Translated, this means wool weaving, and the whole book is devoted to just this.

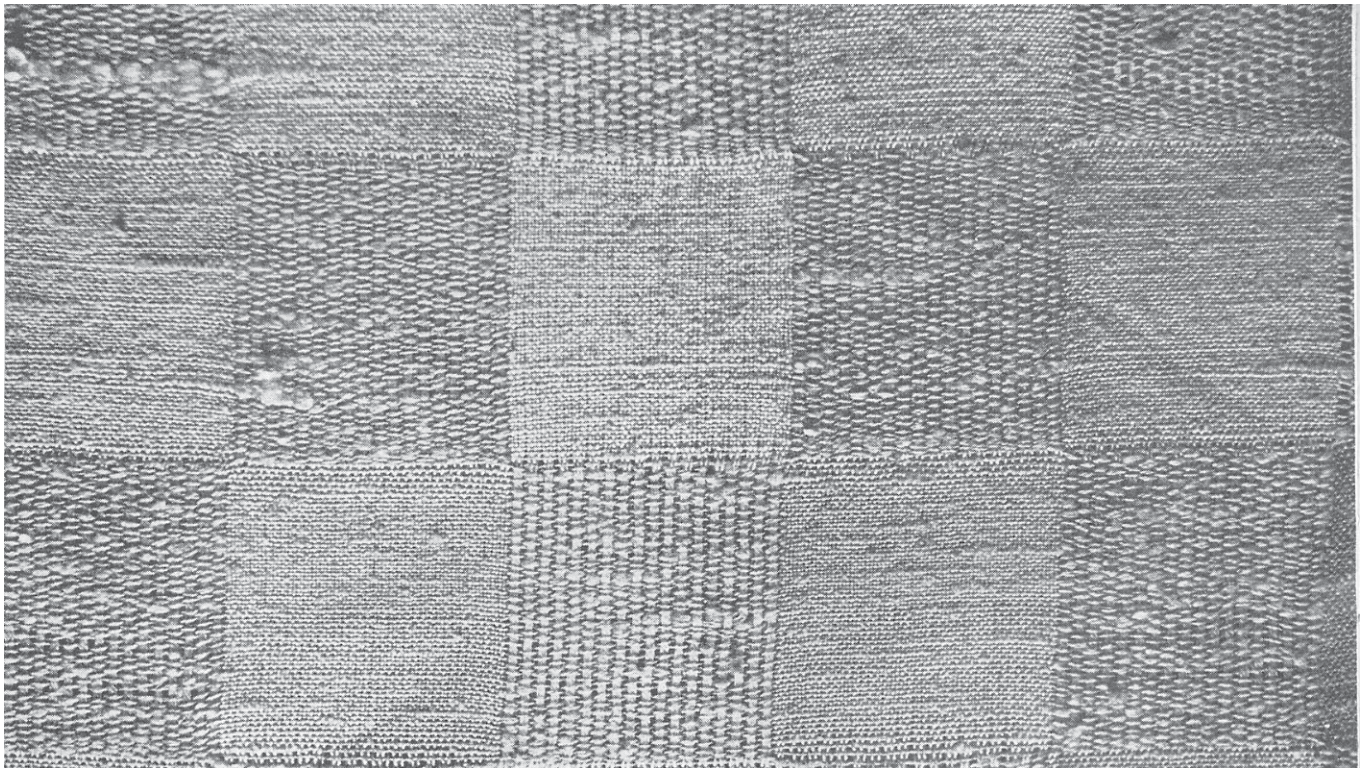
There are sections of the book devoted to scarves, to plaids, to blankets, to wool yardages, and to the characteristic, Scandinavian Art Weaving.

Once again the pictures are outstanding, and especially those that are in color. As I have often said in the past, some good color pictures often make the cost of the book worth while.

There is also a very interesting series of pictures on making a fringe, with step by step photographs given.

A portion of the book at the back, one chapter, is also devoted to loom set-up.

Most of the weavings in the book are



Another M's and O's Pattern, this is a photograph of a man's scarf. It is woven of an Egyptian Cotton Warp, and a slubby silk thread was used in the weft. You can see from the ribs, how there might be a tendency for the weft threads crossing over the ribs, to slip and leave a little gap or opening. With the modified threading of the M's and O's, you can create a much more satisfactory pattern, that will not slip or slide as this weft thread has a tendency to do so.

done in a 4, 3, 2, 1, twill threading, and the effects are achieved by the use of different colors of wool, and different kinds and qualities of wool.

If you've enjoyed the other three of this series, one on rugs, one on linens and tablecloths, and one on drapery and upholstery, you should also enjoy this one of wool weaving.

Title: YLLEVAVAR.

Authors: Hilda Tillquist and Lars Walstedt.

Cost: \$3.30 plus 22c postpaid and ins.

Available: Robin & Russ.

A Swedish-English Weaving Glossary will be given FREE with the purchase of any Swedish Text.

Page 6

Weavers from Here and There

It is our intention, each month, to give a short article about various well-known weavers from all over the country. If you know of anyone exceptional living in your area, please let us know about them, that we might possibly present them in this column.

This month, we're not able to present the profile of the weaver we had planned. We do hope that we will have the information for next month.

Have you ever noticed that weavers are either shy or just so busy with their weaving that they haven't time to have their pictures taken. We have asked some persons 3 and 4 times for a picture and story, and the promise is usually yes, we will be glad to have you do this, and then the picture and story are quite slow in coming.

CLASSIFIED ADVERTISING

A new classified advertising section will be tried out in *Warp and Weft* for a few months, to see if there is any interest or response. Why not advertise your old loom, duplicate equipment, and other such items in this section. Price per 5-line ad is \$4.00. Payment to accompany your advertising copy.

SILK WARP, 10 PLY, black and tan. High sheen, rich and lustrous, with approximately 8000 yards per lb., on cones. \$8.00 per lb. Robin and Russ, 632 Santa Barbara St., Santa Barbara, Calif.

SILK TWEEDS, 18 colors now in stock. 11,000 yards per lb. on cones. Use singly, doubled, or tripled. \$8.00 lb. Free sample sheet upon request. Robin and Russ, 632 Santa Barbara St., Santa Barbara, Calif.

CERAMIC SHUTTLE PLANTERS, in 5 colors. White rose, beige, chartreuse, and aqua. Small 75c, large \$1.50. Large ones same size as standard LeClerc Shuttle. Robin & Russ, 632 Santa Barbara St., Santa Barbara, Calif.

LIGHT WEIGHT FLY SHUTTLE—no weighted ends. Of Persimmon Wood, with regular fly-shuttle bobbins. Price \$6.00 ea. Robin & Russ, 632 Santa Barbara St., Santa Barbara, Calif.

LONG, NARROW, FLY SHUTTLE, weighted, and called the Janet Hughes Special. It has been specially made to order, and is \$8.50 each. Robin & Russ, 632 Santa Barbara St., Santa Barbara, Calif.

THE SCOTTISH CLANS AND THEIR TARTANS, an imported book with 96 of the tartans pictured in color. A small, pocket sized edition, with a history of each of the tartans. \$1.50, plus 18c parcel post, and insurance. Robin & Russ, 632 Santa Barbara St., Santa Barbara, Calif.

WARP AND WEFT BINDERS, are available once again. These are two covers with Chicago Screws for enclosing the copies, and with the name, *Warp and Weft*, in gold leaf, on the cover. Will hold approximately 3 years' issues. Price, \$2.75 parcel post prepaid.

A HANDWEAVER'S WORKBOOK, by Heather G. Thorpe is available. This newly printed book is quite interesting for beginning groups, and for the intermediate weaver. \$4.50, plus 22 cents parcel post and insurance. Robin & Russ, 632 Santa Barbara St., Santa Barbara, California.

RAMIE: Two sizes now are available.
 1. Size 20/2, bleached white, on 1 pound tubes, \$3.20 per lb., 3,000 yards per lb.
 2. Size 9/1, natural, 1 lb. tubes. \$2.40 per lb. 2,700 yards per lb.
 ROBIN & RUSS, 632 Santa Barbara St., Santa Barbara, Calif.

WARP AND WEFT—about 30 back issues for 1949, 1950, 1951, 1952, and 1953. All are mimeographed, with samples. Regularly 25c each, reduced to close at 2 for 25c. Postage prepaid if 8 or more are ordered. *Warp and Weft*, 632 Santa Barbara St., Santa Barbara, Calif.

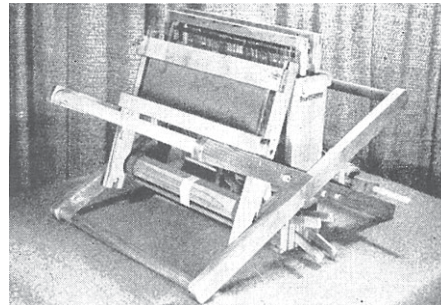
AMERICAN FABRICS, one of the best available magazines on Fabrics. Has as many as 50 to 200 swatches per issue. 4 issues per year. Articles on art, crafts, modern textile trends. Just \$12.50 per year. Robin & Russ, 632 Santa Barbara St., Santa Barbara, California.

WARPING PADDLES, of Rock Maple. 18 holes, paddle shaped to be held in your hand. \$2.50 each, plus 15 cents postage. Robin & Russ, 632 Santa Barbara St., Santa Barbara, California.

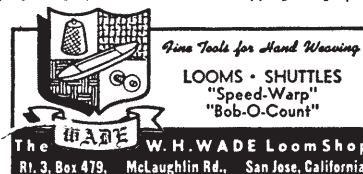
LOOM ANCHORS, a special felt pad, with a pressure adhesive on both sides. Will hold your loom in one place—no skidding or creeping—without use of screws, bolts or fastenings. \$2.00 per set of 4, parcel post, prepaid. Robin & Russ, 632 Santa Barbara St., Santa Barbara, Calif.

WOOL CARDS, for carding that yarn you've been keeping so long. Of steel wire, size 9 1/4 x 4 1/4. Sold only in pairs. Price per pair, \$4.50 plus postage. Robin & Russ, 632 Santa Barbara St., Santa Barbara, California.

THE "CRUSADER"
 14" and 20" Table Model Looms
 Four Harness—1" Sectional-Jack Type
 The Sample loom that has no peer



Constructed of Maple, compact, designed for strength, light weight and portability. Jack type, 6 in. weaving space, harness lock and release automatically. Wire staple sections on 1 in. warp beam. Firm, heavy removable beater or change reeds. Choice of 10- or 15-dent, 400 steel heddles on 14 in., 600 on the 20 in. Shed will take a standard throw shuttle.
 CRUSADER—14", \$42.50 shipping weight, 30 lbs.
 CRUSADER—20", \$67.50 shipping weight, 40 lbs.

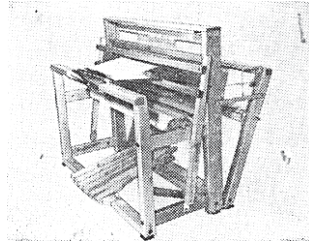


The Weaver's Marketplace

THE "NILUS"

Jack-Type Loom

1. Folding Model
2. Of Red Birch
3. Rising Shed
4. Five different widths
5. Includes reed, shuttles, hook, canvas aprons, and three lease sticks



For further information write to:
NILUS LECLERC, Inc., W. W. L'Isletville
Quebec, Canada

ALL THESE ITEMS

LOOMS SHUTTLES BOBBINS
 QUILLS
 WEAVING YARNS AND ACCESSORIES

are available at

THE HANDWEAVER'S WORK BASKET
 Box 691, R.R.I, West Chicago, Illinois

SILK TWEED YARNS

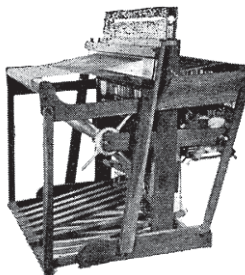
16 COLORS IN STOCK AT PRESENT
11,000 YARDS PER LB., ON CONES
\$8.00 PER LB.

Send a self-addressed stamped envelope
 for FREE SAMPLES to

ROBIN & RUSS HANDWEAVERS
 632 Santa Barbara St., Santa Barbara, Calif.

THE NORWOOD LOOM

1. Custom built, of Cherry.
2. 22", 30", 40", 50".
3. Rising Shed—Sectional beam.
4. Multiple harnesses and special looms to order.
5. Adapted to handicapped by special prescription.
6. Folding models only.



THE NORWOOD LOOM CO.
 P. O. Box 272 — Baldwin, Michigan

warp and weft

632 Santa Barbara Street
 Santa Barbara, California
 Return Postage Guaranteed

BULK RATE
 U. S. POSTAGE
1 1/2c Paid
 Santa Barbara, Calif.
 Permit No. 440