



warp and weft

Vol. XI, No. 7

September, 1958

warp and weft

Published monthly (except July and August) by Robin & Russ Handweavers, 632 Santa Barbara St., Santa Barbara, Calif.

Subscription: \$2.75 per year.

Back Issues: 30c each, plus 2c postage.

Editor: Russell E. Groff, 632 Santa Barbara St., Santa Barbara, California.

Assistant Editors: Robin Groff and Frederick Brown.

Volume XI No. 7

September, 1958

A Word from the Editor

Back to weaving again after a summer full of many interesting and varied activities.

Vacation time saw Janice, Robin and I off to Glacier, Banff and Yoho National Parks on a camping trip. We had rain almost every day, but it was most enjoyable to all of us. We had a visit to the Banff School of Fine Arts where a friend of ours was conducting a one week workshop in Square-Dancing. One of the most inspiring parts of the trip was a hike (a two day backpack trip), wherein Janice, Robin and I packed our sleeping bags, food and clothing on our backs, and then hiked into Lake O'Hara, one of the most beautiful lakes in Banff National Park. We camped and slept that evening in the middle of Alpine Meadow, and we were surrounded on all sides by snow-capped peaks. At about midnight that evening, we woke and saw a most marvelous display of Northern Lights and this lasted for almost two hours. Then, to our delight, when we woke in the morning, we found that a moose and her calf were sharing the meadow with us about 50 feet away from our sleeping bags. And Janice was in seventh heaven when a large jack rabbit bounded right up to us, stopped, and sat and watched us for about 5 minutes.

Page 2

Then back to Santa Barbara to try and catch up on shop activities, more wall and yard work at home, square dancing and bowling once a week, and as this is being written, your editor is getting ready to leave for two weeks of weaving study at Z Handicrafts, just about 100 miles from Montreal, Canada.

Mr. Brown has been extremely busy weaving samples for *Warp and Weft*, and for our new multiple harness weaving bulletin. The first issue of this has gone to press, and if anyone is interested in this, we will have, we hope, some inspiring samples for this bulletin, as well as *Warp and Weft*. The new multiple harness bulletin, as many of you already know, will be \$4.00 per year, and we already have well over 100 subscribers to it.

You should see the two beautiful sport shirts that our dress-maker just finished yesterday. One was a silk and cotton combination, and the other was all silk. She is now making an all silk dress which will be one of the most beautiful that we have ever woven, and we hope eventually to be able to show to you a picture of either the shirts or the dress.

We will have an extremely nice bedspread project for our next issue of *Warp and Weft*, and hope that you will enjoy it as much as we have in the weaving of it. We are making an extra one that we might have it at home for our own personal use.

RUSSELL E. GROFF, *Editor*

P. S.

Just back from Canada, and a wonderful two weeks of Weaving Instruction. Lots of new ideas, and we hope that you will enjoy them in the forthcoming issues of *Warp and Weft*. Also, when you do receive this issue, it will probably be about a week to 10 days later than usual. Hope to get back on schedule for the next issue.

Weavers and Weaving Shops

It is our intention, each month, to give a short article about various well-known weavers, or about different weaving supply centers and shops throughout the country. If you know of an exceptional weaver in your area, or of a good supply center where there is weaving going on, we will be more than glad to hear about them, that we might contact them and see if it will be possible for us to present an article about the individual weaver or shop in each issue.



FRANCES AFANASIEV
of Bozeman, Montana

A hobby that grew into a profession is the story that Frances Afanasiev tells about her weaving.

Now assistant professor of home economics at Montana State College where she teaches only weaving, Frances was formerly a biology instructor at Knox College in Illinois. She has an MS degree in Botany and is a member of two scientific honoraries!

When her daughter was born, Frances turned to a hobby which she could pursue at home and as a result, she has been weaving for the last twenty years.

Plying her own yarns when unusual effects are needed, the personable weaver is well known for her unique fabrics. She has helped

to revive weaving interest in Monana, and has organized a local weaving study group in Bozeman.

TV, radio programs, lectures, demonstrations and workshops crowd her busy schedule. In addition to all these, she does custom weaving and also has many philanthropic projects. One of these was a special textile designed for the Montana State College Memorial Chapel and another is her work with the blind.

She has exhibited at a number of western shows including the Los Angeles County Fair, Northwest Craftsmen's Exhibit, Montana Institute of Arts, and many other state fairs.

The next time that you are in or near Bozeman, Montana, you are more than welcome to stop at the Home Economics Department of Montana State College and see her weavings and see her classes at work.

This Month's Cover

We are indebted to Mr. George M. Hargrave of Lanikai, Hawaii, for the information that we are able to give you about this month's cover, and also complete details about the wall hanging that we used as a cover in the June issue.

The "Finnweave" that is on this month's cover was woven by Mrs. Mariechen Jackson, a member of the Hui Mea Hana Weavers Guild of Hawaii. The warp was carpet warp and the weft was Hau fibre, rug yarn, and metallic thread. Hau is one of the native Island trees. The design of this piece is "Manukane" or, in English, "Bird Man." It was taken from a rubbing made by Mrs. Jackson of a petroglyph, made by ancient Hawaiians at Anaehoomalu, Kailuakona, Hawaii.

These petroglyphs in themselves are a very interesting study. They are found in old burial caves or other caves, out on open flat lava, or even on lava which is covered by water at high tide. The one Mrs. Jackson used was out on the flat lava, inland and above high water.

SILK AND COTTON

A suiting material combining the properties of both of these yarns, silk and cotton. Easy to weave, practical, and durable.

THREADING DRAFT:

4.	X		X		X
3.		X		X	
2.			X		X
1.		X		X	

This is a standard twill threading draft, one of the most common found in weaving.

WARP:

1. 10/2 cotton, 4200 yards per pound on ¼ lb. spools.

WEFT:

1. Two different colors of silk tweed were used in the weft, color 253 and color B.

REED USED:

A 12 dent reed was used, and it was double-sleyed, two ends per dent, or a total of 24 threads per inch.

TREADLING:

A straight twill treadling, of 1, 2, 3, 4, was used and repeated over and over. We did make several other samples on various treadlings such as Chevron, Jean's Twill, and Kersey, and they would all be satisfactory for this same suiting material.

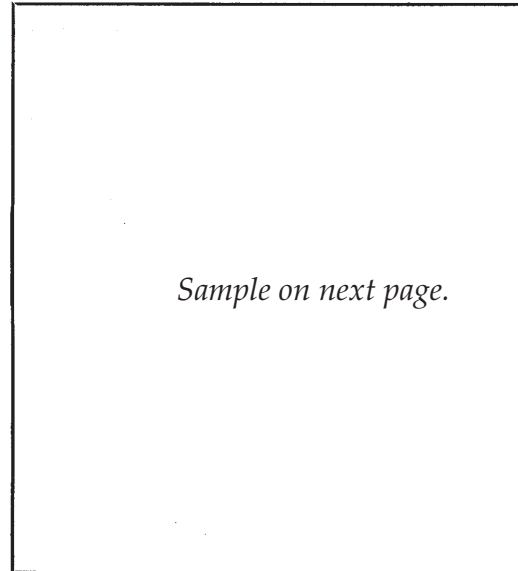
More About this Fabric

This was an extremely easy fabric to weave and an enjoyable one. It was inspired by one of our subscribers from Santa Cruz, California. She was wearing a suit of this at the Northern California Weaving Conference earlier this year. It was particularly impressive to me because of the appearance of the outfit. It was beautifully tailored, had a very

TIE-UP DRAFT:

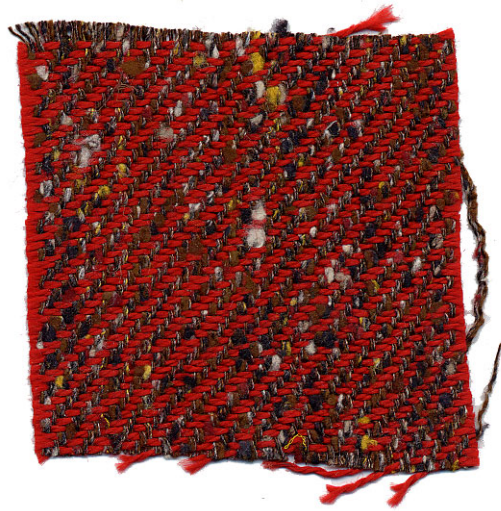
		X	X		X		4.
	X	X		X			3.
X	X					X	2.
X			X	X			1.
	1	2	3	4	A	B	

SAMPLE:



appealing touch, and did not seem to wrinkle in the least. This latter is one of the reasons why we particularly like a cotton and silk combination. From our past experiences, we find that it isn't as warm as all silk is, and that it sheds wrinkles very easily, or I should rather say that it doesn't seem to wrinkle at all.

We set this up on the loom 32" wide, and from 3 lbs. of the 10/2 cotton warp, we received a 15 yard warp. From this we received approximately 13 yards in all of woven fabric. Actually it came to about 13¼ yards of fabric. Then, we decided to wash it and steam press it and see how well we liked it, and this to us, made it appear even nicer. It did shrink about one yard of the 13¼ yards, or in all we had 12¼ yards of finished fabric from our 15 yard warp. I might mention that we washed this in luke-



warm water, and then after allowing it to dry on the line, we then steam pressed it with our steam iron.

In the weft, we deliberately used two different colors, rather than two threads of the same color. We did this, as we seem to get more life from the color combination when two different colors of the silk tweed are used rather than when one is doubled.

It took approximately 19 oz. of each of the two colors for the weft, and this was what resulted in our actual 12¼ yards of finished fabric.

The fabric cost was as follows:

The 15 yard warp took 3 pounds of yarn 10/2 red and this cost \$5.00 per lb. Thus the warp cost came to \$1.00 per yard.

For weft, we used 2 lbs. and 6 oz. of the silk tweed. This retails at \$8.00 per lb., and thus the total weft cost was \$19.00.

According to our dress-maker, this 12¼ yards of fabric should be enough material for two suits, and thus breaking the cost down per suit, it comes to \$17.00 per suit.

The weft, per yard of actual finished fabric after washing, came to \$1.58 per yard.

WARP PER YARD	\$1.00 per yard
WEFT PER YARD	\$1.58 per yard
COST PER YARD	\$2.58

Last Month's Cover

Last month's cover was a wall hanging or room divider. It was woven by Mrs. Mae Ogawa Kimura of Honolulu, also a member of the weaving guild there. The warp was light green carpet warp, with orange, yellow, and chartreuse ratina outlining each strip. The weft was dark brown jute, woven in a twill pattern and giving the Spanish Lace effect between the strips. The native fibre is from the Royal Palm sheath. Only a narrow strip is suitable out of each leaf. This must be cut to width while fresh and kept moist until a sufficient amount is obtained. Mrs. Kimura then dyed the fibre to give it the uniform light brown color.

SILK TWEED SPECIAL:

For the months of September and October only, we are offering a 10% discount on any purchase of silk tweeds. This will apply only for these two months.

Book Review

The book, *INTERIOR DECORATING — THE HAND LOOM WAY*, by Harriet Tidball is a new approach to weaving. It was written for the weaver who wants to design and weave textiles for his own home.

The first part of the book discusses current styles of fabrics for interior decorating, and relates it to the mode of living that has developed since World War II. It points out the great interest that has grown in bright colors, and smooth patterned surfaces that have become popular during this post war period. Most of the content is in the last pages of the book, and it is here that complete instructions (including the various yarns used) are given. The various fabrics suggested are for curtains, upholstery, pillows, drapes, blankets, bed-spreads, afghans, and table linens and household linens.

Most of the patterns given are for 8 or more harnesses. This is not a book for a beginner, but there are very detailed instructions, and thus the weaver without great experience should be able to follow these directions with comparative ease.

There are sections on designing, color, pattern and texture, and helpful rules, hints and helps are included in each of these suggestions.

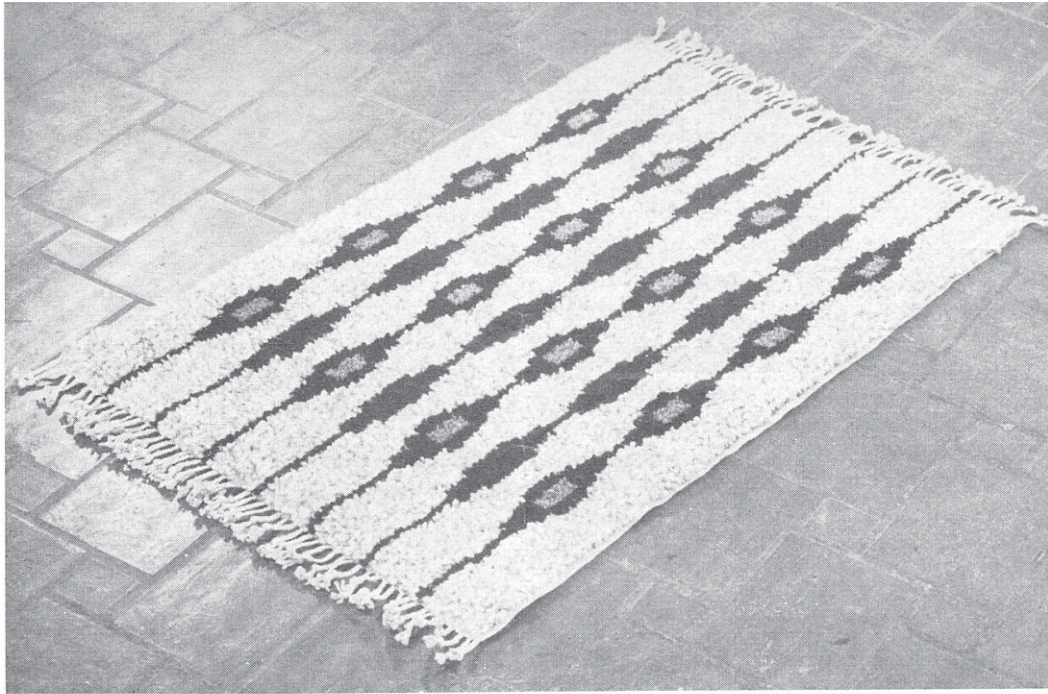
There is a section on the loom that was used, and the threads that were used in the project.

There are many suggestions made, which are excellent time-savers.

Title: INTERIOR DECORATING—THE HAND LOOM WAY.

Author: HARRIET TIDBALL

Price: \$3.50 per copy



Judged best in show at the Pittsburgh Hand Weavers Guild were these two rugs woven by Mrs. Mabel Harper Templin of New Kensington, Pennsylvania. Mrs. Templin stated that, "Weaving Flossa rugs has always been so intriguing and challenging, and that they are ideal weaving for me. Interruptions do not matter. One can stop work at any knot and never lose the pattern."



CLASSIFIED ADVERTISING

A new classified advertising section will be tried out in *Warp and Weft* for a few months, to see if there is any interest or response. Why not advertise your old loom, duplicate equipment, and other such items in this section. Price per 5-line ad is \$4.00. Payment to accompany your advertising copy.

HANDWOVEN NYLON BUCKET BAGS in white and white with pastels. Nylon is washable after bucket insert is removed. Fast colors. \$2.75 each plus postage. Robin & Russ, 632 Santa Barbara Street, Santa Barbara, California.

CARD WEAVING CARDS. In sets of 100 cards. Uniformly punched and packaged with holes in each of the 4 corners. Sold by the set of 100. \$2.00 per set. **ROBIN & RUSS HANDWEAVERS**, 632 Santa Barbara St., Santa Barbara, California.

INKLE LOOMS. Extremely well made inkle looms are available from Robin & Russ Handweavers. Each loom is knocked down and can be shipped via parcel post. \$10.00 each, plus shipping charges. Robin & Russ, 632 Santa Barbara St., Santa Barbara, California.

A LINEN and Acetate Rayon Thread. 65% linen, 35% acetate, in about 6 colors, with 2,400 yards per pound. Free samples upon request. Robin & Russ, 632 Santa Barbara St., Santa Barbara, California.

TEMPLES or STRETCHERS for holding woven fabric to desired width when being woven. Three sizes available, and they are adjustable to desired widths.

- A. 15" to 24" — \$3.25 ea.
- B. 25" to 44" — \$4.00 ea.
- C. 30" to 54" — \$5.50 ea.

Robin & Russ Handweavers, 632 Santa Barbara St., Santa Barbara, California.

NEW, RUG WEAVING FOR EVERYONE, a new well-written edition, with very complete details on almost every phase of rug weaving. Easy to understand, well written. \$6.50, plus 22c parcel post and insurance. Robin & Russ, 632 Santa Barbara St., Santa Barbara, Calif.

LINEN RUG WARP: size 9/3, with 900 yards per lb. \$2.40 per lb. On 1/2 lb. spools. Robin & Russ, 632 Santa Barbara St., Santa Barbara, Calif.

SPEED-DEE, an excellent rubber cement, for cementing broken threads together. This works very well, and the joint is actually stronger than the thread itself. Takes about 1 minute to use. In small, convenient bottles. 50c per bottle, plus shipping.

NEW, KEY TO WEAVING, by Mary E. Black is available once again. Revised, and with more content than ever before. \$12.00 per copy, parcel post prepaid. Robin & Russ, 632 Santa Barbara St., Santa Barbara, California.

CARDBOARD SPOOLS, for sectional warping or for saving surplus yarns from other finished projects. Strong pressed ends, size 2 1/2 x 3 1/4 x 5/16. \$1.00 per doz. **ROBIN & RUSS**, 632 Santa Barbara St., Santa Barbara, Calif.

BLEACHED, HEAVY SLUB LINEN. On spools of approximately 1/2 lb. each. 400 yards per spool. Beautiful in heavy mats, in drapes and upholstery. \$2.40 per lb. Robin & Russ, 632 Santa Barbara St., Santa Barbara, Calif.

NOW

A Multiple Harness Bulletin

Featuring patterns from 5 to 12 harnesses
Ten (10) issues per year

No bulletins in July and August—vacation time

\$4.00 per year

\$.50 per single issue

A minimum 4-by-4-inch sample swatch each issue

First issue, Sept. 1958

Subscriptions are now being taken

ROBIN & RUSS HANDWEAVERS

632 Santa Barbara St., Santa Barbara, Calif.

COLORED RAMIE, IMPORTED

15 wash fast and sun fast colors
size 16/2, 2400 yards per lb.

\$1.50 per 4 oz spool

\$5.75 per lb.

Available as of October 1st

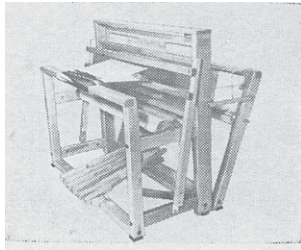
ROBIN & RUSS HANDWEAVERS

632 Santa Barbara St., Santa Barbara, Calif.

The Weaver's Marketplace

THE "NILUS" Jack-Type Loom

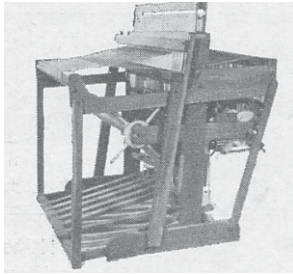
1. Folding Model
2. Of Red Birch
3. Rising Shed
4. Five different widths
5. Includes reed, shuttles, hook, canvas aprons, and three lease sticks



For further information write to:
NILUS LECLERC, Inc., W.W. L'Isletville
Quebec, Canada

THE NORWOOD LOOM

1. Custom built, of Cherry.
2. 22", 30", 40", 50"
3. Rising Shed—Sectional beam.
4. Multiple harnesses and special looms to order.
5. Adapted to handicapped by special prescription.
6. Folding models only.



THE NORWOOD LOOM CO.
P. O. Box 272 — Baldwin, Michigan

2/17's Weaving Worsted

Available in 34 nice colors. Excellent Warp and Weft for skirts and stoles. Available in 2 or 4 oz. skeins. For samples, send 50c to:

THOMAS HODGSON & SONS INC.
Concord New Hampshire

CLOSE-OUT

DAVIS CORDAGE CO. LINENS

20% discount

A detailed inventory of sizes and colors free upon receipt of a stamped address envelope.

THE HANDWEAVERS' WORK BASKET
Box 691, R. R. 1, West Chicago, Illinois

warp and weft

632 Santa Barbara Street
Santa Barbara, California
Return Postage Guaranteed

BULK RATE
U. S. POSTAGE
1 1/2c Paid
Santa Barbara, Calif.
Permit No. 440