

warp and weft

Vol. XII, No. 5

May, 1959

warp and weft

Published monthly (except July and August)
by Robin & Russ Handweavers, 632 Santa
Barbara St., Santa Barbara, Calif.

Subscription: \$3.00 per year.

Back Issues: 30c each, plus 3c postage.

Editor: Russell E. Groff, 632 Santa Barbara St.,
Santa Barbara, California.

Assistant Editors: Robin Groff and Frederick
Brown.

Volume XII, No. 5

May, 1959

A Word from the Editor

Just a few lines this month to let you know the latest.

First of all, the Southern California Handweavers Guild have their annual exhibition and fashion show this coming week-end, and we hope to attend this meeting and give you a report on it.

Then, in two weeks, we will have a trip to Carmel to the 7th Annual Conference of the Northern California Handweavers. This will be an extremely stimulating and exciting show as it always is, and I certainly do wish that all of you *Warp and Weft* subscribers could visit this show and see how well organized and how well done it usually is. We hope to have some photographs and a report on each of these two shows at our next writing of *Warp and Weft*.

Then, more excitement here with the arrival of over 1,000 lbs. of yarns, mostly silks. We purchased two large lots of silks from two textile companies, and think that we have received an unusually good bargain. Still haven't had a chance to unpack all of it, but we do hope to have this done within the next few days, that we might display it properly, etc.

Also, as vacation time is around the corner, and as weaving seems to slow down during vacation time, we are starting something new, an annual summer-time book sale. You will see the details of this sale on page 6, and we hope that you might take

Page 2

advantage of it, and that we might serve those of you who have planned on purchasing that book, but have never gotten around to it.

It is also sample sheet time, and we have just started making up another 2,000 sample sheets. What a job this is, and it seems to get bigger and harder every time we do it. Well, back to those sample sheets.

RUSSELL E. GROFF, *Editor*

Conference and Exhibition News

The Michigan league of handweavers will have a Mary M. Atwater Memorial Conference July 24th through July 26th, at Waldenwoods, Hartland, Michigan. There will be lectures, exhibits, consultations, and demonstrations. For information and registration, write to: Mrs. Charles Neal, 18421 Meridian, Grosse Ile, Michigan.

The University of Nebraska Art Galleries and the Lincoln Weaver's Guild announce that they will have their third biennial exhibition, *Contemporary Hand Weaving*, in Lincoln, Nebraska, in October. The exhibition will be open to weavers anywhere in the United States. After being on display in Lincoln from October 11 through to November 8, a selection of the items will be made, and these items will be sent out on a tour of 8 museums and art centers for a year. There will be cash awards in each of the 4 main classifications. For further information, write to the University of Nebraska Art Galleries.

Tie-Up Drafts in Warp and Weft

It has come to our attention that some weavers have been confused by our tie-up, as we give it in *Warp and Weft*. We will therefore try in the future to give a specific tie-up and tell if that was used for either a jack or counter-balanced loom, to try and avoid any future confusion. We have started this with this issue, as you will see on the sample page.

WEAVERS, WEAVING GUILDS AND WEAVING SHOPS

It is our intention, each month, to give a short article about the various weaving guilds, prominent weavers or weaving shops throughout the country.

If you know of an exceptional weaver, or of an interesting weaving shop, or of a local weaving guild, we will be very pleased to hear about them, that we might contact them and see if it is possible to present a article about the guild, weaving shop or weaver that you might know about.

A New Weavers Guild is Formed

A new weavers guild, the *Nor'craft Weavers' Guild*, has been organized in Michigan within the past year. Let us be more specific and say that this guild is in the West Central portion of the lower Peninsula of Michigan.

The first meeting was held in May, 1958, and from this a permanent organization has resulted. As this is the area "where the Northland Begins," and where many northern crafts are plied, the name was chosen as a contraction of *Northland Craft*.

The officers are: Mrs. Hazel Burton of Pentwater as President, Mrs. Wm. Morton of Baldwin as vice-president, Mrs. Mary Lloyd Parsley of Ludington as Secretary-Treasurer, and Mrs. Melvinna L. McGarr of Baldwin as program chairman and librarian.

Meetings are held on the third Thursday evening of each month in the *Norwood Weaving Shop in Baldwin*. At present, there are approximately 20 members.

The group has received much help and inspiration from several weavers in other parts of the state. Among those who have appeared are Gladys Rogers Brophil of Traverse City, former editor and publisher of *Warp and Weft*; Mrs. Catherine Ux, Art and weaving instructor of Central Michigan State College in Mt. Pleasant; Mrs. M. M. Nichols, a weaver of Traverse City and Mrs. Aycliffe Ochs who operates the Hartland Area Craft Shop.

The guild hopes to grow in membership and to broaden its knowledge and appreciation of the art of good hand weaving. Other weavers and visitors are invited to attend the meetings in Baldwin.

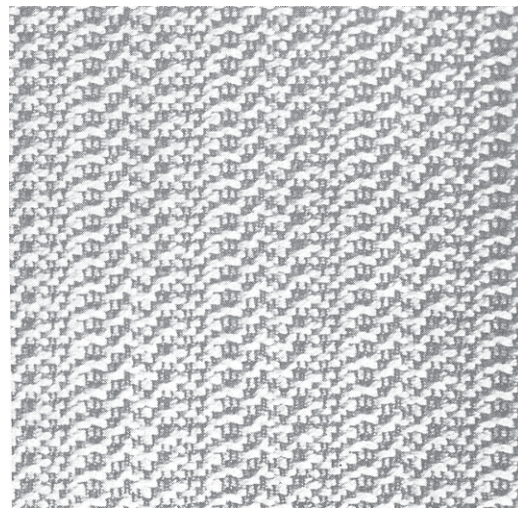
This Month's Cover

The cover this month features some drapes that were woven by Mrs. Wade S. Galvin of Cuyahoga Falls, Ohio.

The warp was an industrial nylon thread, and for weft, Mrs. Galvin used a 10/2 mercerized natural cotton, which she doubled in the weft. The industrial nylon was a 2 ply nylon with an extremely tight twist and it was a tan with a greenish cast to it. It resembles much some of the nylon that tire manufacturers use in the production of automobile and bicycle tires. It appeared to be about the same size as a 10/2 or 12/2 cotton. The pattern used was from the March, 1956, master weaver, and the treadling was 1-2, 2-3, 3-4, 4-1, 2-4, 1-3 and repeat.

The photograph above shows a close-up of the detail of the drapes themselves, while the cover photograph shows what they look like when hung.

For these photographs and the details of her sample, Mrs. Galvin is the winner of a 2-year renewal to *Warp and Weft*.



DRAPERY ON THIS MONTH'S COVER

This is a close-up of the drapes that were woven by Mrs. Wade S. Galvin, and which are on the cover of this month's issue.

CREAM AND SUGAR

A drapery made of silk and cotton, which could be used for dress yardage if desired.

THREADING DRAFT:

4		X	X		X	X	X
3			X				
2		O	O		O	O	X
1		O		O			

KEY TO WARP THREADS

1. X—4 ply luster spun silk, with just one thread per dent, in the reed.
2. O—20/2 Mint Green Egyptian Cotton, with all 3 threads in one group all put in one dent of the reed.

WARP USED:

1. 4 ply luster spun silk, 3000 yards per lb., in natural.
2. 20/2 egyptian cotton, 8400 yards per lb., color Mint Green.

WEFT USED:

1. Spun Douppioni Silk, color light grey, size 4½/1 with 3750 yards per pound. Slightly slubby silk.
2. 20/2 Egyptian cotton, 8400 yards per lb., color Mint Green.

REED USED:

A 15 dent reed was used, and the 4 ply silk was single sleyed, while the 20/2 Egyptian cotton, mint green, was triple-sleyed.

TREADLING:

1. Treadle 1, 2, 1, 2, 1, 2, 1 using the 4½/1 grey silk.
2. Treadle 3, 4, 3 using the 20/2 Mint Green Egyptian Cotton.
3. Treadle 1, 2, 1 using the 4½/1 grey silk.
4. Treadle 3, 4, 3 using the 20/2 Egyptian Cotton.

REPEAT OVER AND OVER.

TIE-UP DRAFT

4		X			X	
3				X		
2			X	X		
1		X				

1 2 3 4

TIE-UP DRAFT NOTE:

The tie-up draft here is given as we used it on a jack-type loom, or a rising shed loom.

SAMPLE:



More About this Fabric

The threading draft which we used in this sample is actually a huck variation. Because of the contrast in the size of the two warp threads, the silk was sleyed singly, one per dent in a 15 dent reed.

The 20/2 Egyptian cotton, color Mint Green was triple sleyed, with all three threads on harnesses 2-1-2 being put in one dent of the reed.

The silk is a slightly slubby silk with a high sheen. It is a fine silk that we had which was a very slow seller because it was so fine. Thus, because of this, we had some 150 lbs. of it, plied into a 4 ply silk warp.

(Continued on next page, column 1)

We had another 50 lbs. of it plied into a 6 ply silk, with only 2000 yards per lb., and they both can be used for warp.

Because of the slub in the silk, there was a tendency for the silk warp threads to cling together. To counteract this, the fabric was woven with the shed open. Actually, the shed was opened, the weft passed through, and then, holding the beater or reed back against the finished fabric, the treadle was changed, and the weft was beat once again. This tended to eliminate most of the clinging of the warp silk. However, once in a while the slub was so great that we had to cut off a portion of it, but this happened only once or twice in the some 20 yards of this drape that we wove.

The 4 ply silk seems to make an excellent warp, as we have used it for several other samples that we made of all silk materials.

We also felt that if you wanted a lighter weight material you could use the 7/2 spun douppioni silk in the very light grey it is available in, or the 7/2 silk in natural white. Either of these would work well. However, we did find that the grey worked better than the natural white, as it helped set off the mint green color Egyptian cotton that was used in the warp and weft.

We washed and pressed the material before cutting it up for samples and this helped improve the appearance very much. Actually we just dipped it in luke-warm water, allowed to drip dry, and then pressed it with a steam iron.

We tried many different colors and sizes of thread with the Mint Green Egyptian cotton in the weft, and it always seemed that the pastel colors were the only pleasing ones that we used. Of all the weft threads that we did try with the mint, we found that a pale pink, a gold, and the grey all seemed to work very nicely with the mint color. However, from a distance, the pink and gold seemed to blend in with the mint, and so we went back to the 4½/1 grey silk.

Cost of Materials Used in Sample

1. 4 ply luster silk warp. This has 3,000 yards per lb., is on cones of about 1 lb. each, and is \$6.00 per lb.
2. The 20/2 Egyptian cotton is \$5.00 per lb., comes on ½ lb. cones, and has 8,400 yards per lb.
3. The 4½/1 grey slubby silk is in skeins, and has 3750 yards per lb. It is \$4.50 per lb.

Cost of the Fabric

In the warp, we used in 16 yards of material cut up for samples, 2¾ lbs. of the 4 ply silk, and ¾ lb. of the Egyptian cotton. The silk cost 16.50, and the Egyptian cotton \$3.75, making a total cost of \$20.25 for the 16 yard warp or \$1.27 per yard.

In the weft, we used 2 lbs. 3 oz. of the 4½/1 grey silk, or a cost of \$9.84. We used 10 oz. of the Egyptian cotton or a cost of \$3.10, thus the entire weft came to \$12.94 or \$.81 per yard for the 16 yards.

WARP COST PER YARD.....	\$1.27
WEFT COST PER YARD.....	.81
	<hr/>
FABRIC COST PER YARD	\$2.08

Also, we want to mention that this was for a 40" width material, that this cost is based upon.

Planning of this Fabric

We originally planned, when we started working on this fabric, to make a material for a woman's skirt, or a tailored skirt and coat combination.

Robin and Mr. Brown seemed to think that it would be too heavy for the skirt or suit that I had planned, and they insisted that it would make much nicer drapery material.

However, I guess that I'm stubborn, as I haven't yet given up the idea that it would make a very nice tailored skirt, or tailored suit for a woman. I even feel myself, that it could be used in a man's sport coat, especially if it were siliconed and treated to resist dirt. What do you think about this use of this material for a man's coat, for a woman's suit, or perhaps even a woman's overcoat?

FIRST ANNUAL BOOK SALE

MAIL ORDERS ONLY

Sale Ends August 30, 1959

POSTAGE PREPAID ON ALL ORDERS. The discounts offered apply only to the books that are listed below. Sale starts as of May 15, 1959. Discount schedule as follows. Checks or payment should accompany all orders.

1. 10% DISCOUNT — on all orders up to value of \$12.00
2. 15% DISCOUNT — on all orders up to value of \$29.99
3. 20% DISCOUNT — on all orders of \$30.00 and over

LISTING OF BOOKS FOR THIS ANNUAL BOOK SALE

- ~~1. THE JOY OF HANDWEAVING, by Osma Couch Gallinger.....\$6.50~~
2. A HANDWEAVERS SOURCE BOOK, by Marguerite Davison..... 8.00
3. FOOT-POWER LOOM WEAVING, by Edward F. Worst..... 7.50
4. THE RECIPE BOOK, by Mary M. Atwater..... 8.00
5. THE NEW KEY TO WEAVING, by Mary E. Black.....12.00
- ~~6. A HANDWEAVERS PATTERN BOOK, by Marguerite P. Davison..... 7.50~~
7. RUG WEAVING FOR EVERYONE, by Gallinger and Del Deo..... 6.50
8. PENNSYLVANIA-GERMAN HOME WEAVING,
by Marguerite Davison..... 1.00
9. HOW TO WEAVE LINENS, by Edward F. Worst..... 5.50
- ~~10. ADVENTURES IN WEAVING, by Gertrude G. Greer.....12.00~~
11. MANUAL OF SWEDISH HAND WEAVING, by Ulla Cyrus (English).... 5.95
12. DESIGNING ON THE LOOM, by Mary Kirby..... 5.00
13. A HANDWEAVERS WORKBOOK, by Heather G. Thorpe..... 4.50
14. THE SHUTTLE-CRAFT BOOK OF AMERICAN HAND-WEAVING,
by Mary Atwater..... 7.50
15. BYWAYS IN HANDWEAVING, by Mary Atwater..... 8.50
16. DESIGNING AND DRAFTING FOR HANDWEAVERS,
by Berta Fry..... 6.95
- ~~17. WEAVING PATTERNS, by Malin Selander (English text)..... 6.95~~
18. WEAVE YOUR OWN TWEEDS, by Roger Millen..... 4.00
19. WEAVING LESSONS FOR HAND LOOMS, by Peasley and Snow..... 2.50
20. HANDMADE RUGS, by Kathryn A. Marinoff..... 1.75
21. DESIGNERS DRAWLOOM, by Alice Hindson..... 5.95
22. WEAVING YOU CAN DO, by E. Allen..... 2.75
23. HANDWEAVING FOR PLEASURE & PROFIT—
Guide to 2 Harnesses..... 4.95
24. DRESSING THE LOOM, by Ida Dean..... 3.50
25. VI VAVER TILL HEMMETT—Swedish text on drapes, upholstery..... 3.75
26. TRASMATTOR OCH ANDRA MATTOR—
Swedish text on Rag and other rugs..... 3.50
27. HANDDUKAR OCH DUKTYG—Swedish text on linen weaving..... 3.30
28. YLLEVAVER—Swedish text of wool weavings, plaids, scarves, etc..... 3.30
29. SMAVAVAR—Swedish text on small woven projects..... 3.85
30. BAND—Swedish text on narrow band weavings..... 3.85
31. THE SETTS OF THE SCOTTISH TARTANS, by Donald C. Stewart.....12.50

Deduct the proper discount from your order and please send payment with order.
All Sales Final - No Refunds or Exchanges - California Purchasers Include 4% Sales Tax

ROBIN & RUSS HANDWEAVERS

632 Santa Barbara Street

Santa Barbara, California

CLASSIFIED ADVERTISING

A new classified advertising section will be tried out in *Warp and Weft* for a few months, to see if there is any interest or response. Why not advertise your old loom, duplicate equipment, and other such items in this section. Price per 5-line ad is \$4.00. Payment to accompany your advertising copy.

THREE WEEKS OF SPECIALIZED INSTRUCTION under the personal direction of Harriet Tidball is available at Hartland Area Crafts, Hartland, Michigan, during the month of AUGUST.

Aug. 3-7—**FUNDAMENTALS**

Aug. 10-14—**EXPLORATORY WEAVING**

Aug. 17-21—**THE HANDLOOM WEAVES**

Write for details. P.O. Box 53, Hartland, Michigan, Attn.: Mrs. E. C. Ochs.

ADAPTORS FOR BOBBIN WINDERS available for the Swedish Mattson Bobbin winder. These adaptors fit perfectly, and allow you to use larger size bobbins, and to wind spools, etc. Price is \$1.00 each, plus 5c postage. Robin & Russ, 632 Santa Barbara St., Santa Barbara, Calif.

SEVEN PROJECTS IN ROSEPATH is once again available. It is very popular and is the same low price of \$1.50 plus 6c postage. Orders now being taken for delivery in approx 3 weeks. **ROBIN AND RUSS**, 632 Santa Barbara St., Santa Barbara, Calif.

SKEIN-WINDERS in all metal are now available. These are adjustable to fit any size skein with just the twist of a wing-nut. A built on metal clamp to fasten to a table or counter makes it easy to use, remove and put away. Price is \$12.50 plus postage. Robin & Russ, 632 Santa Barbara St., Santa Barbara, Calif.

UMBRELLA-SWIFTS of Swedish origin are also available. With a new built on metal clamp instead of the former wooden screw. Especially good for very limited space. Price is \$6.50 plus postage. Robin & Russ, 632 Santa Barbara St., Santa Barbara, Calif.

STEEL WOOL WIRE WOOL CARDS for combing and carding by hand. Sold in pairs. \$4.50 per pair. Postage extra. Robin & Russ, 632 Santa Barbara St., Santa Barbara, Calif.

CARDBOARD SPOOLS for sectional warping and for storage of excess yarns are available. Size 2½" x 3¼" x 5/16". PRICE is \$1.00 per dozen. Robin & Russ, 632 Santa Barbara St., Santa Barbara, Calif.

DYES FOR HANDWEAVERS AND RUG HOOKERS are stocked in 90 colors in the perfection dyes. A color card showing the 90 colors available is 35c, and the dyes are 15c per package. One package will dye 1 lb. of yarn. Many, many weavers recommend these dyes highly, and they are very easy to use. Robin & Russ, 632 Santa Barbara St., Santa Barbara, Calif.

NATURAL LOOP MOHAIR: A nice quality small loop mohair. 2300 yards per lb., 88% mohair, 12% nylon. A small stock left in **NATURAL** and **BLACK** at close-out price of \$3.20 per lb. Robin & Russ, 632 Santa Barbara St., Santa Barbara, Calif.

LOOM LIGHT. A good sturdy loom light is available with a double swivel socket, and a strong, durable clamp to fasten the light to your loom for help in threading, etc. Price is \$4.00 plus postage. **ROBIN & RUSS**, 632 Santa Barbara St., Santa Barbara, Calif.

REED CLEANERS. A specially prepared pumice and rubber pad for cleaning reeds, and any rusty metal parts. Clean your heddles and reeds with this and then spray with the clear plastic "BROMA" to prevent your reeds from rusting again. Reed Cleaner Pads are \$1.00 ea., Broma is \$1.95 per large can. Robin & Russ, 632 Santa Barbara St., Santa Barbara, Calif.

STRUCTO LOOMS in all sizes and makes are available from Robin & Russ. Use an 8" structo loom for your samples. For further information as to costs, etc., write **ROBIN & RUSS**, 632 Santa Barbara St., Santa Barbara, Calif.

INKLE BELT LOOMS for weaving small narrow strips in intricate patterns of 1" to 4" width and any length desired. Very sturdy. \$10.00 ea., plus postage. Robin & Russ, 632 Santa Barbara St., Santa Barbara, Calif.

PLASTIC SPOOLS FOR SECTIONAL WARPING are available. Size of spool is 2" x 3¼". Price is 15c each. Robin & Russ, 632 Santa Barbara St., Santa Barbara, Calif.

HANDWOVEN BELTS

Woven of Beautiful, non-tarnishable solid metal clips on an elastic, stretchable backing. Available in gold, silver, and copper, and in small, medium, and large sizes. Special lengths made to order at 25c each extra. Two widths.

NARROW WIDTH: Any size or color \$3.50

WIDE WIDTH: Any size or color \$5.00

Wholesale inquiries invited

ROBIN AND RUSS

632 Santa Barbara St., Santa Barbara, Calif.

The Weaver's Marketplace

THE "NILUS"

Jack-Type Loom

1. Folding Model
2. Of Red Birch
3. Rising Shed
4. Five different widths
5. Includes reed, shuttles, hook, canvas aprons, and three lease sticks



For further information write to:
NILUS LECLERC, Inc., W.W. L'Isletville
Quebec, Canada

A Complete Line
 YARNS LOOMS
 AND WEAVING SUPPLIES

GOLDEN RULE PRODUCTS

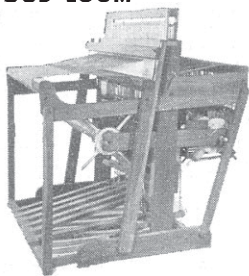
Write for a catalogue and list of agents

HUGHES FAWCETT, INC.

P. O. Box 276 Dunellen, New Jersey

THE NORWOOD LOOM

1. Custom built, of Cherry.
2. 22", 30", 40", 50".
3. Rising Shed—Sectional beam.
4. Multiple harnesses and special looms to order.
5. Adapted to handicapped by special prescription.
6. Folding models only.



THE NORWOOD LOOM CO.
P. O. Box 272 — Baldwin, Michigan

LOOMS

Leclerc Norwood

YARNS

Silk - Cotton - Linen - Wool
 Rayon - Metallic

HAND WEAVERS' WORK BASKET

Box 691, R.R. 1 West Chicago, Illinois

Phone: West Chicago 485-W

warp and weft

632 Santa Barbara Street
 Santa Barbara, California
 Return Postage Guaranteed

BULK RATE
 U. S. POSTAGE
PAID
 Santa Barbara, Calif.
 Permit No. 440