

# warp and weft

Vol. XIII, No. 10

December, 1960



# warp and weft

Published monthly (except July and August) by Robin & Russ Handweavers, 632 Santa Barbara St., Santa Barbara, Calif.

Subscription: \$3.00 per year.

Back Issues: 30c each, plus 3c postage.

Editor: Russell E. Groff, 632 Santa Barbara St., Santa Barbara, California.

Assistant Editors: Robin Groff and Frederick Brown.

---

Volume XIII, No. 10      December, 1960

---

## A Word from the Editor

Thanksgiving is just a week away when this is being written, and with it comes our thanks to all of you who subscribe to *Warp and Weft*, and to those who have purchased materials from us this past year, that we have greatly appreciated trying to serve you, and we hope to continue to do so for a long time to come.

This year, the three of us will spend Thanksgiving at Yosemite, something that we are eagerly looking forward to. We were there about 3 or 4 years ago on Thanksgiving after a fresh snow the day before of about 6 inches, and it was one of the most beautiful sights that we have ever seen.

Not much to report in the way of weaving activities except to mention that we have finished our interesting baby-blanket sample, which we will feature in January. They turned out very nicely, and we wove some 25 yards of this, because the sample will probably be a little larger than usual, and also, we hope to have at least one blanket that we can use for display purposes here in the shop.

This is actually the December issue that we are writing now, so we take the greatest pleasure in wishing all of you a Merry,

Page 2

Merry, Christmas and a very happy holiday season.

This month's sample, we hope you will find quite interesting, and it was a challenge to weave it. I also should mention that I forgot to give the treadling in the November issue of the Whig Rose Miniature. I had it written and included in the copy, but it was mistakenly deleted when we found we had a little too much copy for the last issue.

This month, we wanted to try and spread a little Christmas Cheer so that is the reason for the choice of the cover, and also the inside photograph of one of the card-weaving projects, we have been working on. Incidentally, the last photographs for the card-weaving book have just been taken and will be ready at the photographers today, and we hope that the month of December will see us taking this copy in its complete form to the printer to see if he can make a book out of it. It has been a great deal of fun to work on this card-weaving project, and a great deal of work, but at the same time it has been a rewarding project. We will have some 55 to 60 different patterns on card-weaving featured, as well as photographs of all of these, plus step by step photographs of the procedure used in setting up the cards for weaving. Perhaps next month, we will be able to tell you that this is a finished book. Here's hoping.

RUSSELL E. GROFF, *Editor*

## This Month's Cover

The cover photograph this month is a Christmas Place-mat woven by Mae Flick of the Bobbin Winders Weavers Guild of Baldwin Park and Covina area in Southern California.

It is all a plain cotton with a heavier, contrasting color thread used for the inlay of the Christmas Tree and the Candle Motiff. It is all in a plain weave. I felt that it was

(Continued on Page 3, Col. 2)

### **WEAVERS, WEAVING GUILDS AND WEAVING SHOPS**

**It is our intention, each month, to give a short article about the various weaving guilds, prominent weavers or weaving shops throughout the country.**

**If you know of an exceptional weaver, or of an interesting weaving shop, or of a local weaving guild, we will be very pleased to hear about them, that we might contact them and see if it is possible to present an article about the guild, weaving shop or weaver that you might know about.**

The **Dearborn Handweaving Studio** of Dearborn, Michigan is an interesting place to visit, and if you ever are in Michigan, I think that you would enjoy becoming acquainted with Bessie C. Lowry, the owner.

Mrs. Lowry's interest in weaving started as a child in Vassar, Michigan. She became serious about it when she studied at Greenfield Village. Eventually, she taught a class at Greenfield Village, and then when the adult craft classes were discontinued, she opened her own Studio.

Most of her students are school teachers, nurses, housewives and office workers. While they learn at her studio, they also turn out a variety of finished handwoven articles for themselves. There is quite a variety of age levels in her students and she has mentioned that the projects her students work on vary quite a bit according to this age level.

Mrs. Lowry also does quite a bit of custom weaving, but she states that her greatest pleasure is in helping plan projects with her students and customers.

Mrs. Lowry's enthusiasm has infected her dozen and a half grand children, and several of them weave at home.

Her home studio has handwoven wool carpeting, her curtains are also handwoven. In the photograph above, the coat she is wearing, the bag and the dress are all handwoven articles that she has made. I wish that we could have shown you all 4 photographs that she sent us, but space limitations will not allow us to do this.



**This is a photograph of Bessie C. Lowry and her granddaughter in her DEARBORN HANDWEAVING STUDIO.**

The Dearborn Handweaving Studio is the only local source of weaving equipment, supplies and instructions. As she is only a mile from Greefield Village, she also assists them in dressing their looms for the school art classes. If you have a chance, do visit the Dearborn Handweaving Studio at 22211 Morley, in Dearborn, Michigan.

---

#### **THIS MONTH'S COVER — Continued**

very effective for this coming Christmas Season, and perhaps it might inspire you to do something like this for future holiday seasons, such as Thanksgiving, Easter, and of course, future Christmas seasons. I think that most of you can see how simple it was to weave this piece, and yet, it is so strikingly effective.

## SILRAM

A place-mat project featuring the combination of Ramie and silver supported metallic both in the warp, and Ramie alone in the weft.

### TIE-UP DRAFT:

4			X	X		X	
3		X	X		X		
2	X	X				X	
1	X			X	X		
	1	2	3	4	5	6	

### THREADING DRAFT:

4							X	X	X	X	X	X	
3							X		O	O	O	O	
2			X	X	X	X	X						
1			O	O	O	O	O	X					
			B Unit					A Unit					

### WARP USED:

A. One warp thread was the 16/2 Ramie thread imported from Switzerland in Apple Green color. It has 2400 yards per lb., and comes on approx. 1 lb. cones or 4 oz. spools. There are 2400 yards per lb., or 600 yards per 4 oz. spool. Colors are both sun-fast and wash-fast.

B. The other warp thread was the fine supported 1/64 silver metallic which normally comes on about 1/2 lb. spools. It has about 10,000 to 11,000 yards per lb., so there are at least 5,000 plus yards per spool. One spool, used as we have used it here, would be enough for probably 6 or 7 sets of place-mats.

### WEFT USED:

Two Ramie threads were used in the weft. One was the apple green thread, same as the warp, and the other is the 16/2 Ramie in the Sky Blue color.

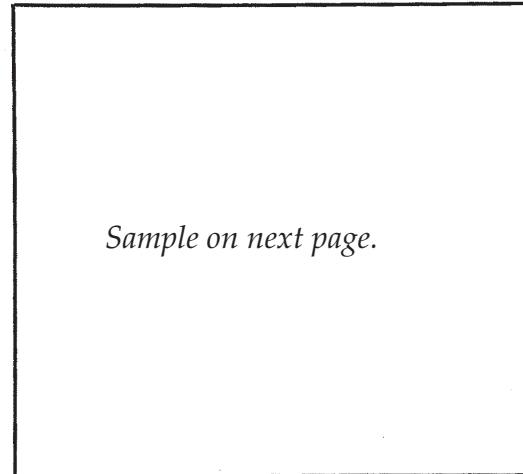
### REED USED:

A 12 dent reed was used, and it was sleyed 2 per dent, making a total of 24 threads per inch.

### KEY TO MATERIALS IN THE WARP:

- O—Supported Silver Metallic.
- X—16/2 Apple Green Ramie.

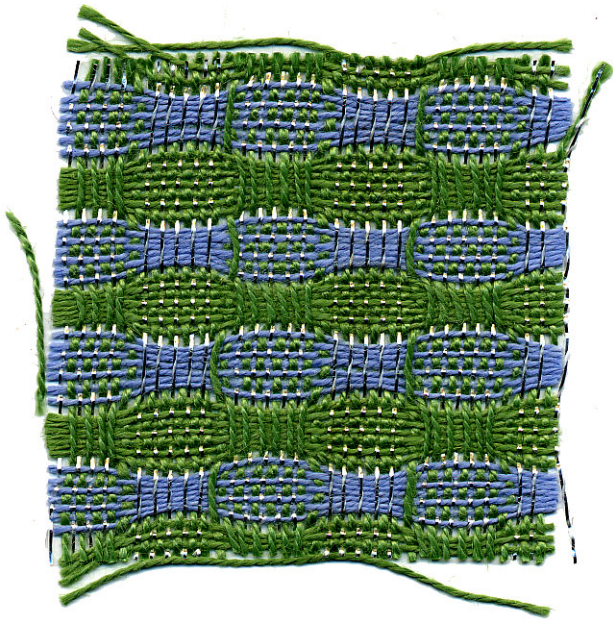
### SAMPLE:



### TREADLING:

- A Block—Treadle in this sequence:  
6, 4, 6, 4, 6, 4, 6.
  - B Block—Treadle in this sequence:  
5, 4, 5, 4, 5, 4, 5.
- Repeat this over and over as desired.

Also, in the treadling, you can accentuate one block of perhaps 7 threads in the A Block as we did, and then the other color just the first three threads of the B Block if desired. Many persons would like this better if the sizes of the two blocks did vary, both in the warp and in the weft. However, we made them both the same deliberately





in our sample. If you desired to do so, you can use two different textured threads in the treadling, one in the A block and another in the B Block. Many interesting effects are achieved by using two different weights of thread in the weft, and also in the warp. This particular weave is a fascinating one to experiment with, and we hope that you will try just this with some of your various threads.

#### **MORE ABOUT THE THREADING DRAFT:**

Most of you will recognize the threading draft for what it is. Actually, it is just a huck variation with a few extra threads added to change it slightly from a true huck variation. Actually, the first 11 threads are one of the two huck units, the 12th and 13th threads are used in this case to join the huck units together, and then the last 11 threads are the other portion of the huck threading draft. Some persons would call this a 5 spot huck or a 5 thread huck, but because we have added the extra two threads, we will just call it a huck variation.

Once again, I would like to emphasize that all of the huck weaves are extremely versatile weaves, and one that you can obtain many interesting texture effects with.

For those of you who do not know of it, I'm going to recommend the book, 4 HARNESSE HUCK, by Evelyn Neher, and suggest that you make a study of it. An excellent group study project, would be some experimenting and work with the various threading drafts as given in her book.

#### **PLACE-MATS IN THIS SET-UP**

For those interested in making place-mat settings of this weave, we are going to give our suggestions for these. First of all, as to size, we would like to suggest that you make your mats about 13x19 inches, 14x20 inches,

or 15x21 inches plus an allowance for hems. The above are the finished sizes. For about a 14 inch finished mat, we would suggest that the whole threading draft be repeated a total of 14 times, plus a repeat of the A unit, making it 14½ inches wide.

Remember, if you start threading with the A unit, be sure to add an A unit to balance on the other end of your set-up. The same applies to the B unit. If you start threading with the B unit, then be sure to add just the B unit at the end to balance the weave. If you use the Ramie or a 20/2 linen, you would have 14½ repeats of the pattern or a total of 348 warp ends. We are going to suggest something else to make this easier weaving. We think you will find the mats much easier to weave, if you have the first 24 threads on each edge of your mat in all ramie or linen, and then you start to alternate the metallic and ramie or linen as we did in our draft. We found that in weaving our samples, we had no trouble with the metallic, when we did this, but when we carried the metallic clear to the edge, the metallic tended to break somewhat then.

With a good solid selvage edge of linen or ramie for one inch, you tend to eliminate this problem. Also, as with most huck weaves, it is hard to obtain a good edge on both blocks in your treadling, and this is another reason why we have suggested that you have plain linen or ramie on the edge for one inch. Also, we feel that it tends to help make the metallic stand out a little more if you do just this.

You could even thread the first 24 threads on each edge in a twill, 4, 3, 2, 1 repeat and this should help you obtain a little nicer edge or selvage in the weaving, and this too, would tend to help set-off both the metallic and the pattern in the center of the mat.

## TREADLING FOR MINIATURE WHIG ROSE

I'm sorry to say so, but last month, we, by mistake, omitted the treadling for the sample that we had given. Here is the treadling for the sample as we wove it in last month's Warp and Weft.

Treadle No. 2—two times  
Treadle No. 1—one time  
Treadle No. 4—one time  
Treadle No. 3—one time  
Treadle No. 2—one time  
Treadle No. 1—four times  
Treadle No. 2—one time  
Treadle No. 3—three times  
Treadle No. 4—two times  
Treadle No. 3—two times  
Treadle No. 4—two times  
Treadle No. 3—three times  
Treadle No. 2—one time  
Treadle No. 1—four times  
Treadle No. 2—one time  
Treadle No. 3—one time  
Treadle No. 4—one time  
Treadle No. 1—one time

Repeat over and over as desired. Tabby is understood here. The tabby is the dark green Sea Moss Weaving Afghan, and the pattern thread was the white Fabri.

An alternate treadling that I would also like to suggest would be to treadle as drawn in. Here is the alternate treadling.

Treadle No. 1—one time  
Treadle No. 2—one time  
Treadle No. 3—one time  
Treadle No. 4—one time  
Treadle No. 1—one time  
Treadle No. 2—four times  
Treadle No. 1—one time  
Treadle No. 4—three times  
Treadle No. 3—two times  
Treadle No. 4—two times  
Treadle No. 3—two times  
Treadle No. 4—three times

Treadle No. 1—one time  
Treadle No. 2—four times  
Treadle No. 1—one time  
Treadle No. 4—one time  
Treadle No. 3—one time  
Treadle No. 2—one time

Repeat over and over as desired.

## Book Review

This month, we are reviewing a little paper-backed book priten in England, which has a wealth of information in it. It is

“THE COMPLETE GUIDE TO HAND SPINNING,” by K. Grassett.

I think this is one of the most informative pamphlets on this subject that has been written. It gives many complete instructions for teasing, carding, and spinning. It explains how to spin with a hand spindle, as well as a regular spinning wheel.

Directions for handling many of the various types of yarns and for the spinning of these are given. There are directions given for the spinning of cotton, Angora Wool, Flax or Linen, Silk and one or two other yarns.

The individual parts of the spinning wheel are explained, and there are five full pages of drawings contained in this pamphlet with 5 or 6 illustrations on each page.

Other pertinent and useful information is also included such as Bleaching Flax, Bleaching Silk, a history of the hand spindle and the spinning wheel and numerous other small items of information.

There has been a very great amount of interest shown lately in spinning, and particularly with the hand spindle, so I feel that this pamphlet is particularly pertinent to the times. Also, the price of this is \$1.50.

TITLE: COMPLETE GUIDE TO HAND-SPINNING.

AUTHOR: K. Grassett

PUBLISHER: London School of Weaving

PRICE: \$1.50, postage prepaid

AVAILABLE: Robin & Russ Handweavers.

## CLASSIFIED ADVERTISING

A classified advertising section will be tried out in *Warp and Weft* for a few months, to see if there is any interest or response. Why not advertise your old loom, duplicate equipment, and other such items in this section. Price per 5-line ad is \$4.00. Payment to accompany your advertising copy.

**FOR SALE—60"**, 4 harness, fly-shuttle Binder Loom. Sectional beam, in good condition. Used only a few times. For information, contact: Gladys Kyle, 1221 Alameda Avenue, Glendale, Calif.

**THE SHUTTLE CRAFT GUILD**, Publications for Handweavers, by Harriet Tidball, Route 1, Box 204B, Lansing, Michigan. Annual subscription to regular edition \$7.50, to portfolio edition with samples, \$17.50. Also Correspondence Courses.

**DRAFTING PAPER:** 1/10" Squares, marked on both front and back so both sides can be used. \$1.35 per package of 100 sheets or \$.75 per package of 50 sheets. Postage on both 10c extra. Size of paper is 8 1/2 x 11. Robin & Russ, 632 Santa Barbara St., Santa Barbara, Calif.

**A GIFT SUBSCRIPTION** to *Warp and Weft*, our 4 harness bulletin, or to *Drafts and Designs*, our multiple harness bulletin featuring patterns of 5 to 12 harnesses, makes a pleasing Christmas present for your weaving acquaintance. *Warp and Weft* \$3.00 per year. *Drafts and Designs*, \$4.00 per year. We will send acknowledgement to your friends for these subscriptions. Robin & Russ, 632 Santa Barbara St., Santa Barbara, Calif.

**TWO LINE WOVEN LABELS** are once again available from Robin & Russ. When discontinued by Cash's last year, we searched everywhere for a two line label. At last, thanks to the help of another weaving shop, we found a source of these two line labels. Handwoven by on the top line and your name on the bottom line is the most common style. Minimum order is 12 dozen and the price is \$4.90. This is less than what Cash's labels used to cost. Delivery is 4 to 6 weeks, postage prepaid. Robin & Russ, 632 Santa Barbara St., Santa Barbara, Calif.

**A 20/2 COTTON SPECIAL.** We have been fortunate to obtain another nice lot of size 20/2 duren cotton in natural, and also a green-tan color a little lighter than a khaki color. **ON SPECIAL WHILE IT LASTS**, this Duren is \$1.80 per lb. The natural is on cones of 2 to 3 lbs., and the green-tan is on cones of 1/2 lb. to 1 lb. in size. About 100 lbs. of the 20/2 and 50 lbs. of the green-tan. Postage extra. Robin and Russ, 632 Santa Barbara St., Santa Barbara, Calif.

**DARK NATURAL LINEN WITH A FAINT GOLD metallic twist.** Size 6/1, with 1,600 yards per lb. \$3.20 per lb. on 4 oz. spools. Robin & Russ, 632 Santa Barbara St., Santa Barbara, Calif.

**33/1 BLEACHED WHITE RAMIE** for weft in towels, damasks, table linens, drapes, etc. 9,600 yards per lb., on approximately 1 lb. tubes. \$3.50 per lb.

**BLACK SILK WARP:** A beautiful black silk warp with a very high luster. On approximately 4 oz. spools, and it has 10,000 yards per lb \$8.50 per lb. Robin & Russ, 632 Santa Barbara St., Santa Barbara, Calif.

**5 STRAND WHITE SILK FLOSS:** A very nice silk, excellent for accents in many things. Can be use for warp as well as weft. On cones of about 1 lb., 4 oz. each. It has about 2,250 yards per lb. \$6.00 per lb. Robin & Russ, 632 Santa Barbara St., Santa Barbara, Calif.

**SINGLE PLY LUSTER SPUN SILK WARP:** This is beautiful 5 1/2/1 luster spun silk for warp or weft. It has 4,800 yards per lb., is very strong, even though single ply, and is \$6.00 per lb. On cones of about 1 lb., 4 oz. each.

**DARK NATURAL LINEN WITH AN EVEN RAYON twist.** It is a striking and unusual combination thread. Can be used for warp as well as weft. 1,400 yards per lb. and it is available on 4 oz. spools. \$3.20 per lb. Robin & Russ, 632 Santa Barbara St., Santa Barbara, Calif.

**42% LINEN, 58% RAYON**, in a boucle twist. Another of the new and striking combinations of linen with another thread. Excellent for upholstery, drapes, place-mats, etc. 1,200 yards per lb. \$4.00 per lb. or \$1.00 per 4 oz. spool. Robin & Russ, 632 Santa Barbara St., Santa Barbara, Calif.

**A METALLIC SPECIAL:** A limited amount of 1/32" flat metallic in gold, silver and copper is available at the very low price of \$1.50 per approx. 1/2 lb. spool. This is lurex on original lurex metal spools, no spool deposit. Postage is extra. Also 1/4" and 3/8" wide gold on metal spools at the same price of \$1.50. These usually sell at \$3.00 per spool, plus spool deposit. Robin & Russ, 632 Santa Barbara St., Santa Barbara, Calif.

**MINIATURE SHUTTLE PINS:** A beautiful hand-made lapel pin, about 1 1/2" long, made of Ebony or Italian Pear. Price is \$2.00 each, postage prepaid. Robin & Russ, 632 Santa Barbara St., Santa Barbara, Calif.

**ALPACA AND SILK combination.** It is 20% Alpaca and 80% silk in a fine 14/1 Light Grey Heather combination. 11,000 plus yards per lb. Beautiful in dresses and suits. On cones of about 1 lb. each. \$4.00 per lb. Robin & Russ, 632 Santa Barbara St., Santa Barbara, Calif.



# The Weaver's Marketplace

## TWO LINE WOVEN NAME LABELS

now available

12 dozen minimum order (144)

\$4.90 postage paid

**ROBIN & RUSS HANDWEAVERS**  
632 Santa Barbara St., Santa Barbara, Calif.

## 10/2 LINEN

17 Rich Colors plus Crem & White

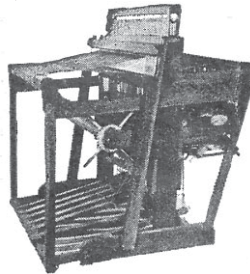
4 oz. spools

1500 yards per pound

**HUGHES FAWCETT, INC.**  
P. O. Box 276 Dunellen, New Jersey

## THE NORWOOD LOOM

1. Custom built of Cherry.
2. 22", 30", 40", 50".
3. Rising Shed—Sectional beam.
4. Multiple harnesses and special looms to order.
5. Adapted to handicapped by special prescription.
6. Folding models only.



**THE NORWOOD LOOM CO.**  
P. O. Box 272 — Baldwin, Michigan

## NEW !!!

**Functional Overshot** by Grace D. Blum  
A basic source for modern designs.  
Contains concise directions for weaving almost any overshot threading, in 24 different methods and 32 woven swatches.

\$16.50 per copy

Mailed prepaid when  
check accompanies order.

**HAND WEAVERS' WORK BASKET**  
Box 691, R.R. 1 West Chicago, Illinois

**warp and weft**

632 Santa Barbara Street  
Santa Barbara, California  
Return Postage Guaranteed

BULK RATE  
U. S. POSTAGE  
**PAID**  
Santa Barbara, Calif.  
Permit No. 440