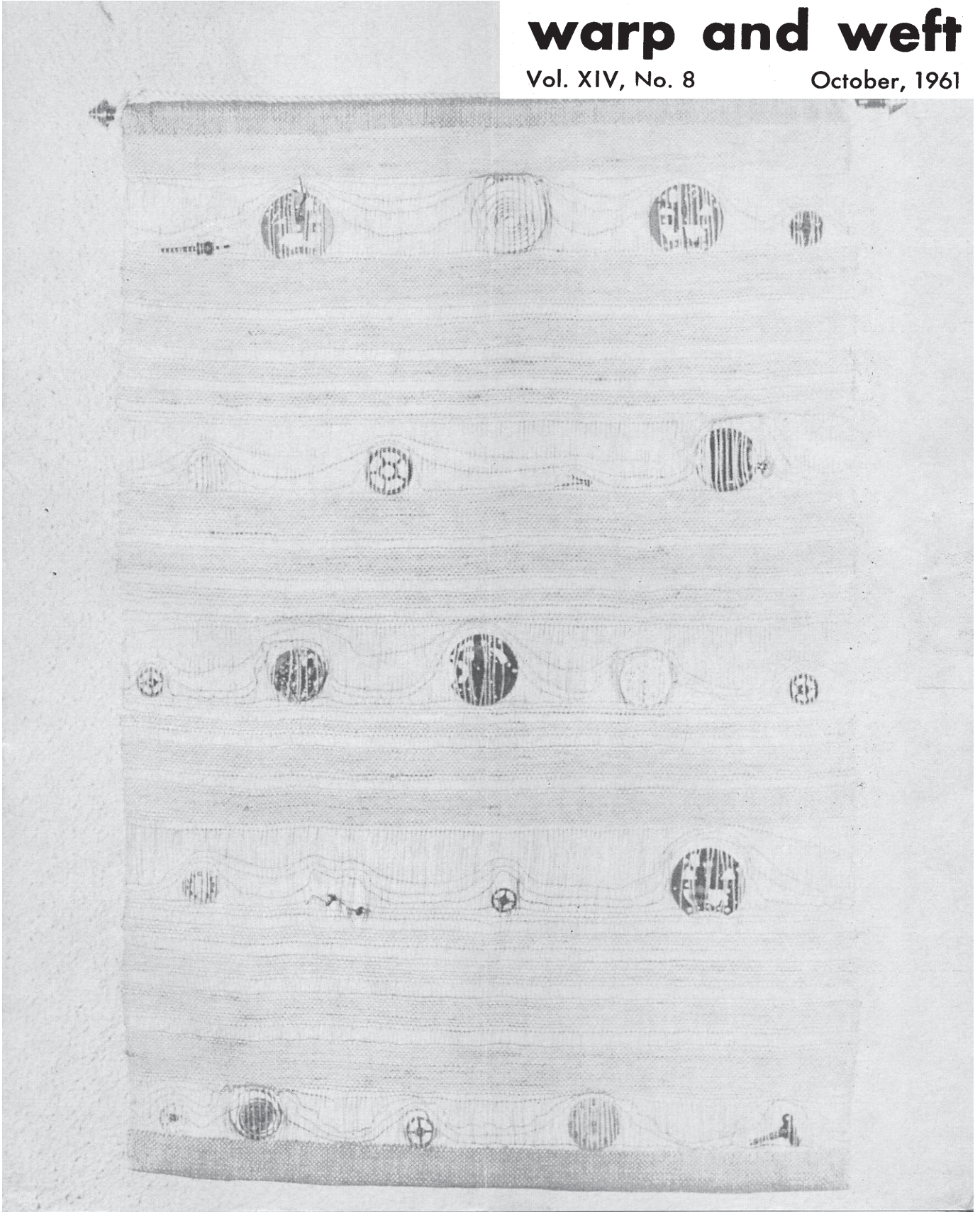


warp and weft

Vol. XIV, No. 8

October, 1961



warp and weft

Published monthly (except July and August)
by Robin & Russ Handweavers, 632 Santa
Barbara St., Santa Barbara, Calif.

Subscription: \$3.00 per year.

Back Issues: 30c each, plus 3c postage.

Editor: Russell E. Groff, 632 Santa Barbara St.,
Santa Barbara, California.

Assistant Editors: Robin Groff and Frederick
Brown.

Vol. XIV, No. 8

October, 1961

A Word from the Editor

First of all, a reminder again that as of January 1, 1962, Warp and Weft will be increased in price to \$4.00 per year's subscription. Anyone wishing to renew now for 1 or 2 years may take advantage of the current \$3.00 per year price.

Secondly, with the beginning of school, our adult education class has begun again. We normally have an enrollment of 15 to 20 persons but this time we had 27 and had to turn away about 5 others. It is really amazing how much interest is shown in the many handicraft classes offered by the School System here in Santa Barbara for the Adult Education Program.

Also, as every day passes by, we are working with the other members of the Santa Barbara Weavers Guild on the plans for the 3rd Bi-Annual Southern California Handweavers Conference which will be held in Santa Barbara next March 17th and 18th on Saturday and Sunday. We look forward to about 600 persons attending this conference, and are trying to plan accordingly. We think it will be the best conference yet that

Page 2

has been held in Southern California, and the local guild would like to invite all who can attend to come and enjoy not only the exhibition, but also the beautiful city of Santa Barbara.

A registration slip will be printed in Warp and Weft in the January and February issue, and all those who would like to attend can send their reservations in, using this registration slip. Also the guilds in California will receive individual mailings of registration slips and other information.

We had another 2 week vacation after our week's bicycle trip, and Janice, Robin and I had a wonderful time in Northern California and Washington and Oregon. We went gold panning for a day (and found some color), and climbed up a glass mountain of black obsidian, and emptied the cooler of all food and filled it with all colors of volcanic rock and brought it home along with a couple of other boxes of same. We visited friends in Washington, Oregon and California and had a leisurely 2 weeks trip which did all of us a world of good.

Well enough of this, and now back to the sample for this month, and our weaving for the sample for the November issue.

RUSSELL E. GROFF, *Editor*

This Month's Cover

This month's cover is a photograph of an interesting wall hanging, called "SPARE TIME." If you will look at it closely, you will notice that it is all of the parts of a watch woven into a wall hanging.

This wall hanging was woven by Mrs. Elsie P. Church of Lomita, Calif., and is very striking when you see it. If I remember correctly, the warp is of fine linen, and also the weft. Mr. Church's hobby is collecting antique watches and clocks, so this wall hanging certainly add to his collection.

The Plan For a Place-mat with a Border All Around The Outside Of The Mat

This is a plan for a very nice linen mat, using 20/2 natural linen for warp, set at 24 threads per inch.

Your place-mat will be approximately 13x19" plus hem when finished and will be set-up on the loom 14" wide.

Here is the threading plan.

- 2,1,2,1,2,1—2 times—12 threads
- 2,3,2,3,2,1—8 times—48 threads
- 2,4,2,4,2,1—36 times—216 threads
- 2,3,2,3,2,1—8 times—48 threads
- 2,1,2,1,2,1—2 times—12 threads

TOTAL NUMBER OF WARP ENDS—336

TIE-UP DRAFT: for Jack-type Looms

4	○			○
3	○			
2		○		
1	○		○	○
	1	2	3	4

The treadling for this Swedish Lace Mat with the border all around is as follows:

1. Treadle 2,1,2,1,2,1—5 times
2. Treadle 2,3,2,3,2,1—8 times
3. Treadle 2,4,2,4,2,1 for 15 inches
4. Treadle 2,3,2,3,2,1—8 times
5. Treadle 2,1,2,1,2,1—5 times

You will note that the plain weave threadles are treadles No. 1 and 2. We have you start your mat by treadling this 15 times, so that you will have enough plain weave to turn back a hem and have the plain weave match the width of the plain weave strip on the 2 selvage edges of the mat. This plan will give you a 1/2" plain weave area all around the outside edges of the mat. Then you will have a 2" lace border next to this plain weave area, and then the center of the mat will be all plain weave. In the treadling if you have a very firm or a very loose

beat, you might have to change the treadling in units 2 and 4 above so that you treadle it 6 or 7 or 8 or 9 or 10 times—actually so that it is 2" wide when finished. It would normally have to be more than 8 times as most persons beat linens tighter than other projects.

You can vary your mats considerably if you so desire. If you just want squares of lace you will treadle for a plain weave and the No. 3 treadling unit, 2,4,2,4,2,1 until you have squares of lace. Or if you want just 2 lengthy lace borders along your selvage edges, you will treadle 2,4,2,4,2,1 continuously.

From 2 lbs. of size 20/2 linen, you can weave approximately 13 mats. This is enough for 9 yards warp, and weft for this 9 yards. We have a beautiful quality Belgian linen in natural with a fairly high gloss which is \$4.40 per lb. Thus to break it down to the cost per mat, and also allowing for wastage of warp on the loom, your linen mats cost you approximately 63c each.

This cost figure per mat is based on the Belgian linen I mentioned. Of course you could weave these in colors if desired, or with other threads than linen if desired, and your cost will vary accordingly.

When finished with your weaving, rinse out in very hot water, trying to be careful not to wrinkle the linen. Then allow to drip until almost dry, and then with a steam iron at a hot heat, press until dry. This will give more sheen and luster to your mats also, and will tend to make them crisper or stiffer so that they will lay flat much better.

CARRIAGE OR CRIB COVER LACE

A very open or lacey crib cover which can also be used as a wrap-around baby blanket, or for other numerous uses.

THREADING DRAFT:

4	X		A	A		X
3	X	OO	OO		OO	OO X
2	X		X	X	X	X
1	X	X			X	X

WARP THREADS USED:

- X—Pink Wool Pompadour
- O—Fabri, 2/18's Worsted, Dark Green
- A—Aqua blue rayon boucle

WEFT THREADS USED:

Only one thread was used in the weft and it was a white wool pompadour.

REED USED:

A 10 dent reed was used, and it was sleyed as listed below.

SLEYING THE REED:

This is one of the most important parts of weaving this sample. A 10 dent reed was used, and we had 4 threads of pink pompadour in the first dent, 4 threads of dark green fabri and 2 of pink pompadour in the 2nd dent, 2 threads of rayon boucle and 2 of pompadour in the 4th dent, and 3 threads of pompadour in the 5th dent. Then you skip 5 dents and start over.

- 4 threads in 1st dent
- 6 threads in 2nd dent
- 4 threads in 3rd dent
- 6 threads in 4th dent
- 3 threads in 5th dent

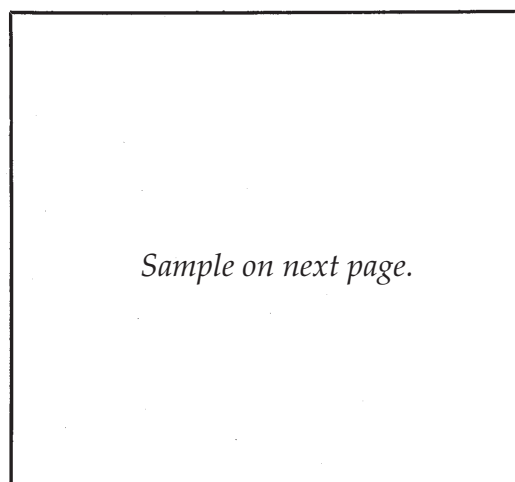
SKIP 5 DENTS THEN START OVER

TIE-UP DRAFT:

4	O	O	X	X	X	O
3	O	X	X	O	O	X
2	X	X	O	O	X	O
1	X	O	O	X	O	X
	1	2	3	4	5	6
					A	B

X's above—tie-up for Counter-balanced
O's above—tie-up for Jack-type.

SAMPLE:



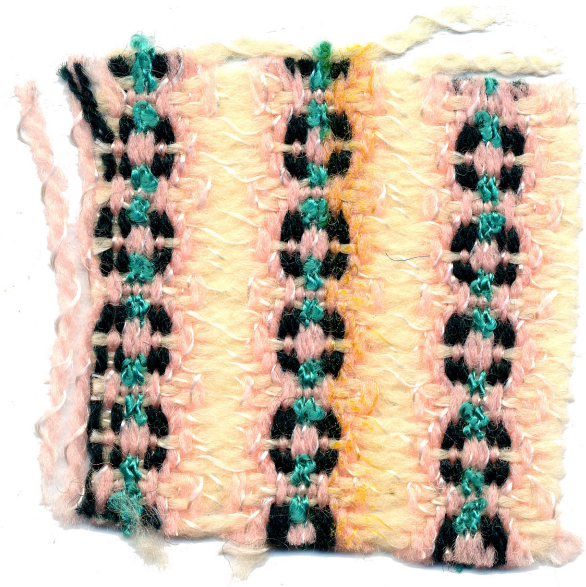
Sample on next page.

TREADLING SEQUENCE:

The treadling sequence is as follows: Treadle 1,2,3,4,1,4,3,2, and then repeat over and over. On the last repeat be sure to balance by ending with a No. 1 treadle.

The sample this month was inspired by a fabric woven by Georgia Skelton of the Mount Lassen Weavers Guild in Northeastern California. This has been varied quite a bit from her sample, but it has essentially the same appearance as did her sample.

Also, I am going to make a suggestion to make this sample easier to weave. Instead of using the pompadour in the warp as we did, I am going to suggest that you use a 2/18's fabri in the baby pink doubled, or two threads through each heddle of this fabri instead of this heavier pompadour. Because



of the nature of Pompadour baby yarn, it is quite often fuzzier than a smooth yarn like fabri, and thus fabri does not tend to cling together as much when the shed it opened as does the pompadour. However, with a little care, you could weave the pompadour yarn. Also, I think the fabri would be just a little bit less expensive than the pompadour.

Another thing about the pattern that I should mention is that we have two threads of dark green fabri together on harness number three. You could make this fabric a little softer and easier to set-up, if you would put both of these threads in one heddle, instead of using two as we did.

We did quite a bit of sampling on the project for this month. We made a sample using a 15 dent reed at first with all the warp thread through 4 dents, and then a skip of 11 dents. This wasn't too satisfactory and so we changed to a 12 dent reed. We set up the 40" width loom using a 12 dent reed, and still were not satisfied, so we changed to the 10 dent reed, and sleyed it as we have mentioned earlier. I think that it would work just as well in an 8 dent reed although the 10 dent gave us a more satisfactory pattern.

Another thing that helped in the weaving was something that we did on the outer edge. We tied a heavy linen cord about $\frac{1}{2}$ " to $\frac{3}{4}$ " outside the edge warp threads and put our shuttle around this with each throw of the shuttle. Thus there was no pull in on the selvage or edge threads of the wool, so we were able to get a full 40" width crib cover. Then, we plan on binding the edge all the way around when we cut this off the loom, and we will use a blanket binding which can usually be purchased for less than a baby binding for blankets. The blanket

binding is usually twice as wide as most, so if you cut it in half, it works up very well as binding on a regular baby blanket.

We also made a sample using a different weft, a heavy 4 ply knitting worsted, and many persons would like this just as well as the pompadour that we used. I personally think that if you could find a nylon or orlon boucle yarn heavy enough that this also would be very nice in the weft thread.

This type of pattern that we have used here has many possibilities. I think that you would find that it would make very striking drapery using other novelty yarns in the warp, along with the wool. If we have a chance to, in a later issue, we will try to use this same treading draft, using entirely different materials for both warp and weft, and make a drapery fabric out of this material.

Also, material of this type of weave would be very attractive if you wanted to allow the color of the undersurface appear through. Suppose you had a lampshade with a pale pink background and covered it with this type of material. Then you would have the undercover color appear through the fabric, giving it an entirely different effect.

Or if you wanted to make a very fancy evening skirt with this type of material, you could have a very pretty lining for the skirt and this would be the surface material of the skirt.

Also, if I remember correctly, Mrs. Skelton mentioned that she thought this weave would be very attractive in a ribbon fabric for a dress or a suit.

Perhaps some of you might try out some of these ideas and share them with us that we might in turn share them with the other subscribers to Warp and Weft.

Cost of the Threads Used In The Sample

We will give the cost of the various threads use in this sample, but will be unable to break-down the fabric cost per yard, as we forgot to keep track of how much pompadour we used in the weft on our 15 yarn warp.

POMPADOUR yarn comes in 6 colors and has 2,240 yards per lb. It is \$5.40 per lb., or 69c per 2 oz. skein if less than 1 lb. of a color is purchased.

FABRI, Bernat's 2/18's worsted yarn is \$6.80 per lb., or \$1.00 per 2 oz. skein if less than 1 lb. of a color is purchased.

RAYON BOUCLE: In the aqua green and other colors is \$3.50 per lb. It comes on ½ lb. spools, and there are about 35 different colors available. The colors are sold to us as sun-fast colors, and the pastel colors are washfast, but not the dark reds and blues and other dark colors.

This Month's Book Review

This month we have a new book just out titled "THE WEAVER'S BOOK" by Harriet Tidball. This book has a sub-title on the cover also which I feel describes the contents very well. This sub-title is Fundamentals of Handweaving, and the book is devoted to just this.

This would make an excellent workbook for a beginning class in handweaving, and the information is clearly and concisely given, and easy to read and to understand.

There are many books for beginners, but this one goes beyond the beginning stage and covers the materials and ideas which every good handweaver who is interested in the craft should know. There are also many helpful ideas given in the book. Among

these ideas are the suggested setting of different sizes of cotton, linen, and wool, the suggested sizes for various finished woven projects, illustrations of the various stages of sectional warping, information about the many yarns available, a chart for guide to sleying the reed with the correct number of threads per inch and many other ideas and subjects too numerous to mention.

There are chapters on proper designing, explaining the drafts, dressing the loom, and information about the actual steps of weaving, fabric analysis and drafting of patterns, and related information. The last portion of the book is devoted to an explanation of the different classes of weaves as plain, twill, twill derivatives, unit weaves, grouped thread weaves, double and rhythmic weaves. There are sections on answering the questions that bother the beginning handweaver; such as how to use three or 4 shuttles; what to do to make treadling easier, and the proper beating.

All in all, I think I would recommend this book highly for the beginner and early intermediate weaver.

TITLE: THE WEAVER'S BOOK

AUTHOR: Harriet Tidball

PUBLISHER: The MacMillan Co.

PRICE: \$5.50 plus 19c pp.

AVAILABLE: From the Macmillan

Company, New York, New York or from Robin & Russ if desired.

OLD HAMPSHIRE YARNS

for

Hand Weaving - Hand Knitting
Rug Hooking

Special prices on 20 lbs. and over quoted on request. Send 10c for a sample folder. Special attention is given to institutions and schools for arts, crafts and therapy programs.

THOMAS HODGSON & SONS, INC.

Department Y

Concord, New Hampshire

CLASSIFIED ADVERTISING

A classified advertising section will be tried out in Warp and Weft for a few months, to see if there is any interest or response. Why not advertise your old loom, duplicate equipment, and other such items in this section. Price per 5-line ad is \$4.00. Payment to accompany your advertising copy.

TWO HARNESS, 14" Width TABLE LOOM, made of hardwood, and well constructed. 280 heddles, 10 dent reed. Can be shipped via parcel post. Price is \$31.50. Excellent for mats, plaids, stripes, and all two harness weaves. Robin & Russ, 632 Santa Barbara St., Santa Barbara, Calif.

ELECTRIC BOBBIN WINDER. A new, excellent electric bobbin winder with a tapered shaft. Leclerc bobbins fit on it perfectly. Suction cups to hold it to the table. Sturdy Dayton Motor. \$22.50, postage prepaid, anywhere in the U.S. A GOOD BARGAIN. Robin & Russ, 632 Santa Barbara St., Santa Barbara, Calif.

MINIATURE SHUTTLE PINS. Beautifully made of Ebony or Italian Pear Wood. About 2" long, with a good clasp so that they can be worn as a lapel or dress pin. Actual bobbin in each shuttle with thread on bobbin. \$2.00 each. Robin & Russ, 632 Santa Barbara St., Santa Barbara, Calif.

10/3 SPUN SILK WARP: with 8,400 yards per lb. Same size as 20/2 cotton. Three ply, and very strong, and an excellent warp. On cones of about 1 lb., 2 oz. each. \$8.50 per lb. Robin & Russ, 632 Santa Barbara St., Santa Barbara, Calif.

5 1/2/1 SPUN SILK WARP: With a very nice sheen or luster. 4,600 yards per lb. Can be used for warp or weft. \$6.00 per lb. Robin & Russ, 632 Santa Barbara St., Santa Barbara, Calif.

THREAD NIPPERS: A special made, very small pair of scissors made for the textile industry. Made to hang on one finger, and yet allow that finger to be used in knot tying, loom setups, etc. \$3.50 per pair. Robin & Russ, 632 Santa Barbara St., Santa Barbara, Calif.

HEDDLE TRANSFER RODS: Two thin, pliable, spring steel rods with clasps on each end. Will fit inside heddles while on the harnesses for easy changing from one harness to another or for easy storage, \$1.00 per pair. Postage prepaid. Robin & Russ, 632 Santa Barbara St., Santa Barbara, Calif.

1/4" WIDE WOOD STRIPS: These are available in 2 lengths, 14 1/2" and 20 1/2" lengths. 100 strips per bundle. \$1.00 per bundle for shorter length, and \$1.35 per bundle for longer length. Available in Madrone (reddish brown) and in Black Walnut. Robin & Russ, 632 Santa Barbara St., Santa Barbara, California.

DARK NATURAL LINEN WITH A FAINT GOLD metallic twist. Size 6/1, with 1,600 yards per lb. \$3.20 per lb. on 4 oz. spools. Robin & Russ, 632 Santa Barbara St., Santa Barbara, Calif.

THE HANDWEAVERS WORKBASKET now stocks a complete and full range of Bernat colors in both the Fabri and Afghan yarns. Sample color cards, thirty cents, upon receipt of request. Grace D. Blum, THE HANDWEAVERS WORKBASKET, Box 691, R. R. 1, West Chicago, Illinois.

LONG NYLON STRIPS: Once again available are the long nylon selvages for bags and rugs and place-mats (one of our customers has torn these strips into 4 narrower widths and used them in drapes). We have them on hand now in white, light blue, light pink, light green, lavender, pale yellow, and small amounts of 1 or 2 other colors. \$1.60 per lb. while it lasts. ROBIN & RUSS, 632 Santa Barbara St., Santa Barbara, California.

16/5 NATURAL LINEN: A beautiful quality linen, with 960 yards per lb. It is 5 ply and is excellent for warp in heavy patio mats, rugs, etc. It is on about 3/4 to 1 lb. tubes and is \$3.20 per lb. Robin & Russ, 632 Santa Barbara St., Santa Barbara, Calif.

NOVELTY BOUCLE, a combination of Jute and rayon. On about 2 lb. cones. A very unusual thread. Free sample upon request. \$3.20 per lb. This is something we had about 4 years ago and this is the first since then we have been able to obtain it. Robin & Russ, 632 Santa Barbara St., Santa Barbara, California.

14/6 CORD LINEN: This too is beautiful quality linen, with a good sheen, and it is on special at \$3.20 per lb. It has 700 yards per lb., and is excellent warp for mats, rugs, etc. ROBIN & RUSS, 632 Santa Barbara St., Santa Barbara, Calif.

RAMIE DISH TOWELS FROM SWITZERLAND. A new stock of these has just come in, and they are excellent buys at \$1.25 each. Available in white and red or white and blue. Will not shrink, stretch, rot, resists mildew, twice as strong when wet as when dry, very absorbent. Robin & Russ, 632 Santa Barbara St., Santa Barbara, Calif.

COTTON FLAKE WITH GOLD TWIST: Available in natural only, this is a very nice yarn, excellent in drapes and upholstery. It has approximately 1,400 yards per lb., is available on 1 lb. cones only and is \$3.75 per lb. Robin & Russ, 632 Santa Barbara St., Santa Barbara, Calif.

TWO LINE WOVEN LABELS are once again available from Robin & Russ. When discontinued by Cash's last year, we searched everywhere for a two line label. At last, thanks to the help of another weaving shop, we found a source of these two line labels. Handwoven by on the top line and your name on the bottom line is the most common style. Minimum order is 12 dozen and the price is \$4.90. This is less than what Cash's labels used to cost. Delivery is 4 to 6 weeks, postage prepaid. Robin & Russ, 632 Santa Barbara St., Santa Barbara, Calif.

The Weaver's Marketplace

NEW!!!

Functional Overshot by Grace D. Blum

A basic source for modern designs. Contains concise directions for weaving almost any overshot threading, in 24 different methods and 32 woven swatches.

\$16.50 per copy

Mailed prepaid when check accompanies order.

HAND WEAVERS' WORK BASKET
Box 691, R.R. 1 West Chicago, Illinois

HANDWEAVING YARNS and SUPPLIES

A wide variety of distinctive yarns, developed especially for handweaving is available for prompt shipment in quantities to suit your needs.

WRITE TODAY FOR FREE CATALOGUE
AND FREE PRICE LIST.

The Handweaver's Headquarters

LILY MILLS COMPANY
Dept. HWWW Shelby, N. C.

A Complete Line YARNS - LOOMS AND WEAVING SUPPLIES

GOLDEN RULE PRODUCTS

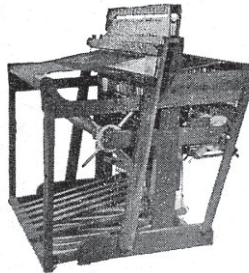
Write for a catalogue and list of agents

HUGHES FAWCETT, INC.

P. O. Box 276 Dunellen, New Jersey

THE NORWOOD LOOM

1. Custom built, of Cherry.
2. 22", 30", 40", 50".
3. Rising Shed—Sectional beam.
4. Multiple harnesses and special looms to order.
5. Adapted to handicapped by special prescription.
6. Folding models only.



THE NORWOOD LOOM CO.
P. O. Box 272 — Baldwin, Michigan

warp and weft

632 Santa Barbara Street
Santa Barbara, California
Return Postage Guaranteed

BULK RATE
U. S. POSTAGE
PAID
Permit No. 440
Santa Barbara, Calif.